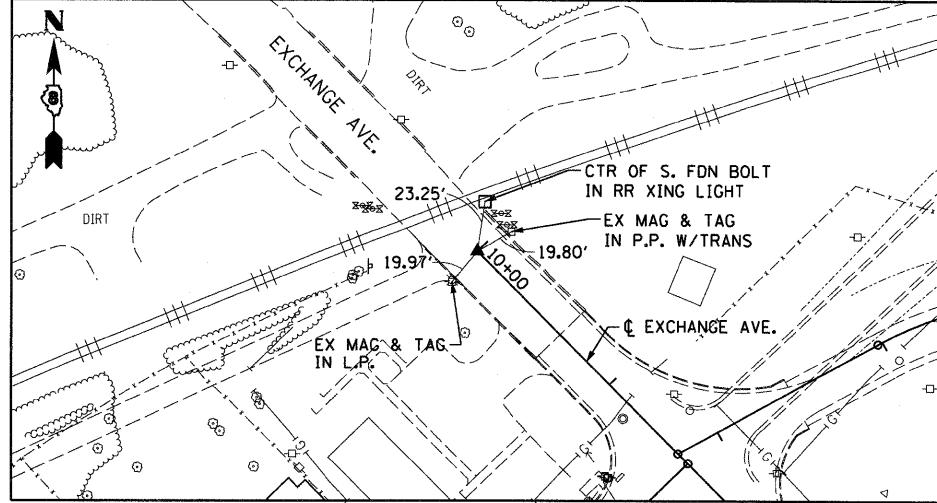
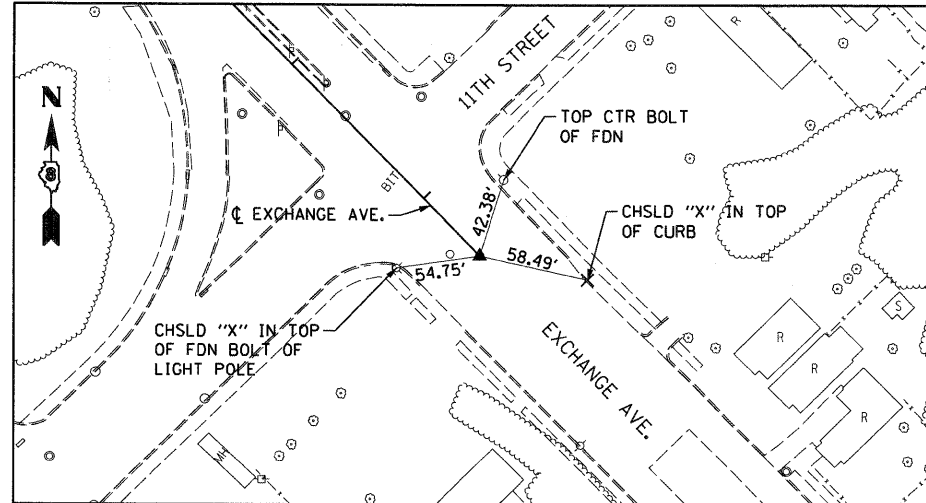


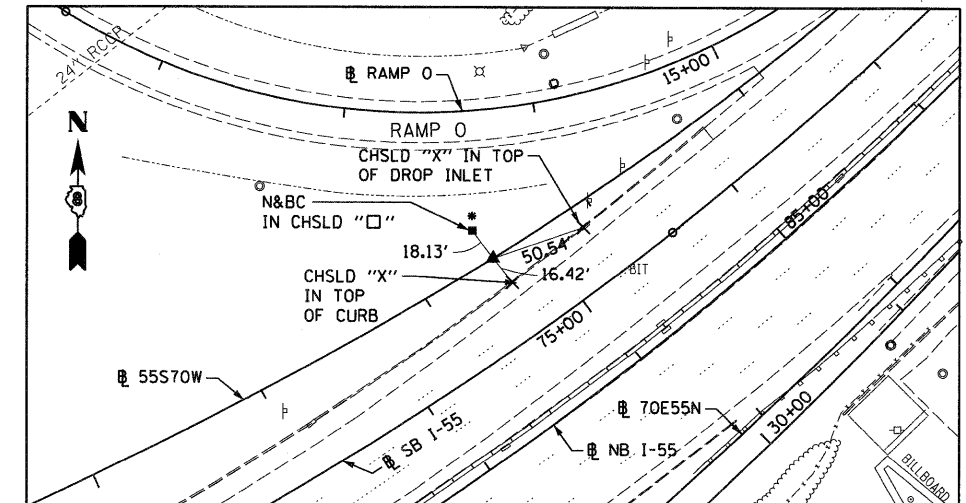
EXCHANGE AVENUE
 POT STA 10+00.00
 SET MEG NAIL IN CONC. CRACK W/CHSLD "X"
 (CONTROL POINT MAY NEED TO BE RE-ESTABLISHED DUE TO CONSTRUCTION ACTIVITY.)



EXCHANGE AVENUE
 POT STA 27+42.42
 SET MEG NAIL IN CHSLD "□" W/CHSLD "X"

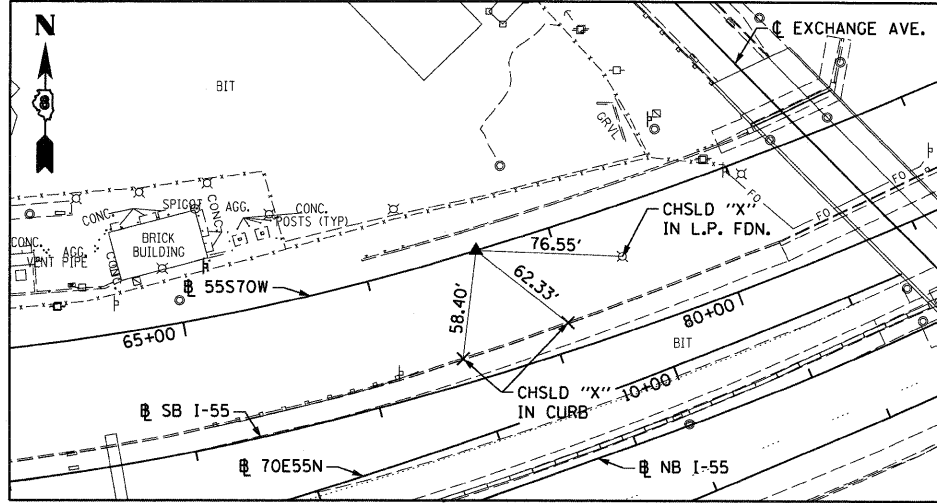


55S70W
 PCC STA 57+58.25
 SET 5/8" REBAR W/RED CAP FLUSH W/GR



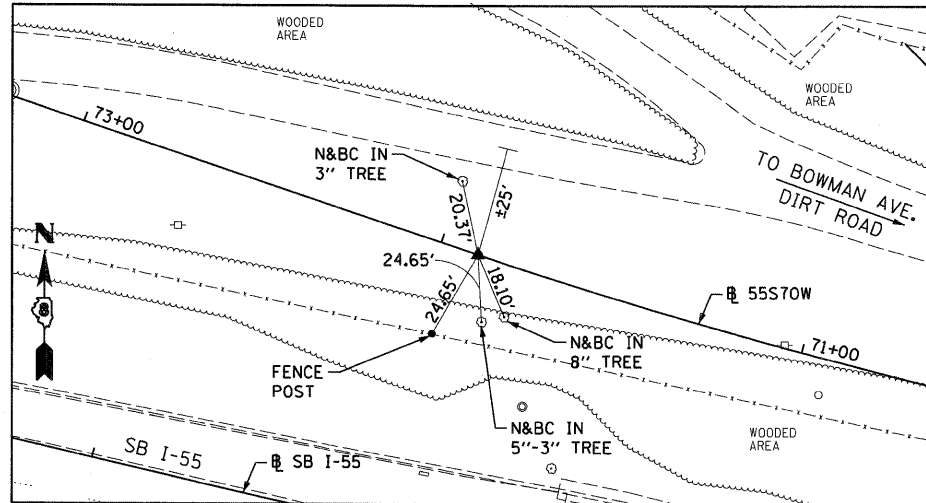
POINT NOT AVAILABLE

55S70W
 PCC STA 63+40.22
 SET 5/8" REBAR W/RED LINENG CAP FLUSH W/GR
 (CONTROL POINT MAY NEED TO BE RE-ESTABLISHED DUE TO CONSTRUCTION ACTIVITY.)

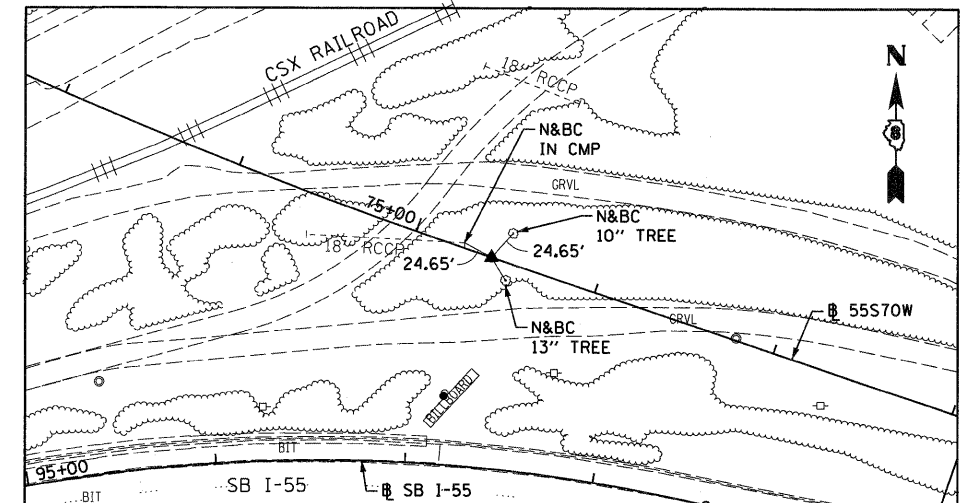


CONTROL POINT MAY NEED TO BE RE-ESTABLISHED DUE TO CONSTRUCTION ACTIVITY.

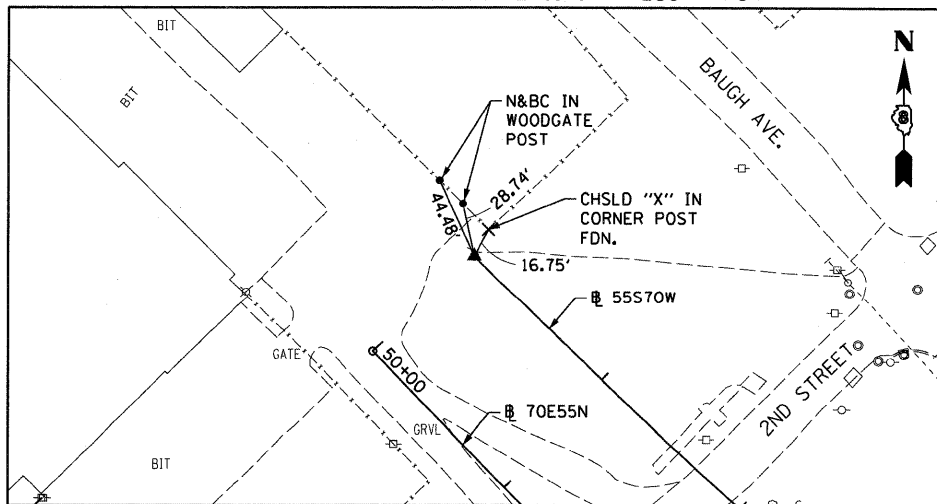
55S70W
 PT STA 71+89.66
 SET 5/8" REBAR W/RED CAP FLUSH W/GR



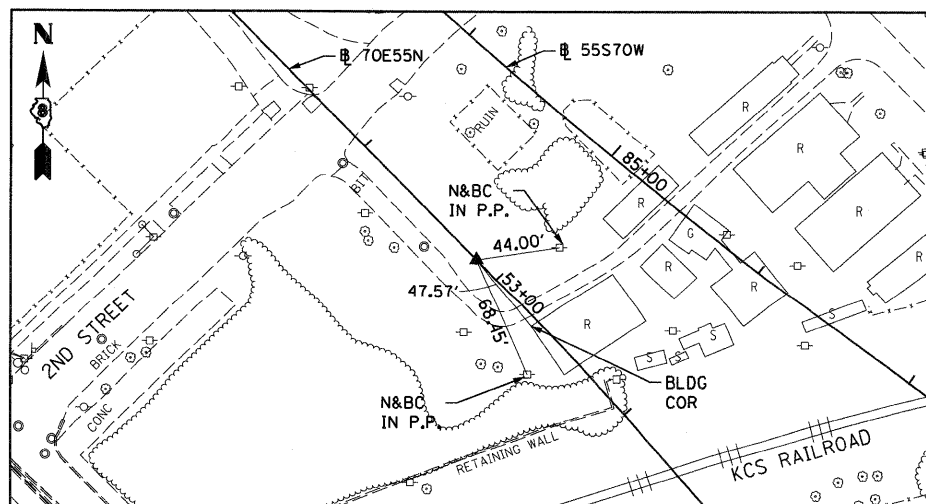
55S70W
 PC STA 74+57.77
 SET 5/8" REBAR W/RED LIN TRAV. PT CAP



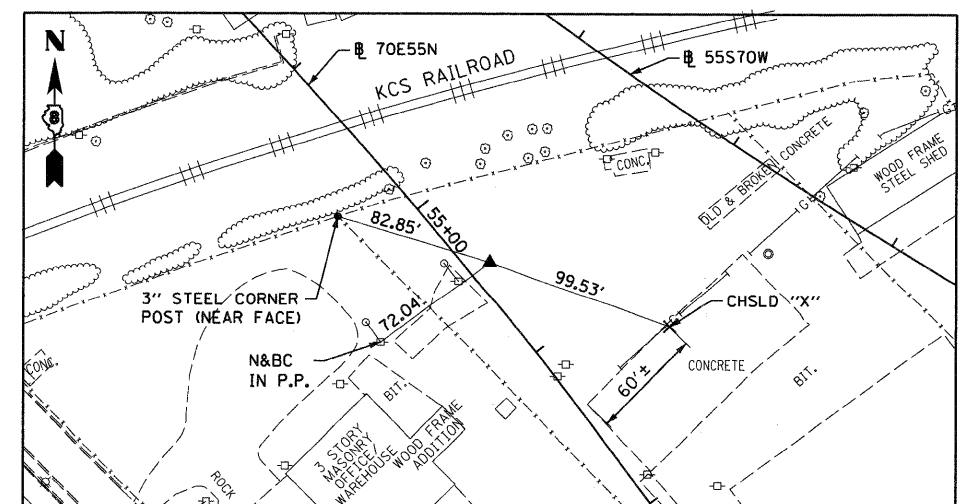
55S70W
 PT STA 87+95.40
 SET 5/8" REBAR W/RED LIN ENG. CAP FLUSH W/GR



70E55N
 PC STA 52+85.08
 5/8" I. PIN W/YELLOW CAP



70E55N
 PI STA 55+46.88
 5/8" I. PIN W/YELLOW CAP



FILE NAME = DBTRI-76C52-sh1-ATB-DB.dgn

USER NAME = searsb
 PLOT SCALE = 100.0000' / in.
 PLOT DATE = 1/24/2012

DESIGNED OP
 DRAWN PHP
 CHECKED DBM
 DATE 1-20-12

REVISED -
 REVISED -
 REVISED -
 REVISED -

STATE OF ILLINOIS
 DEPARTMENT OF TRANSPORTATION

ALIGNMENT, TIES AND BENCHMARKS

SCALE: NONE SHEET NO. 8 OF 9 SHEETS STA. TO STA.

F.A.I. RTE.	SECTION	COUNTY	TOTAL SHEETS	SHEET NO.
64/998/70	82-1-R(A), 82-1-R(B)	ST. CLAIR	629	68
CONTRACT NO. 76C52			ILLINOIS FED. AID PROJECT	