

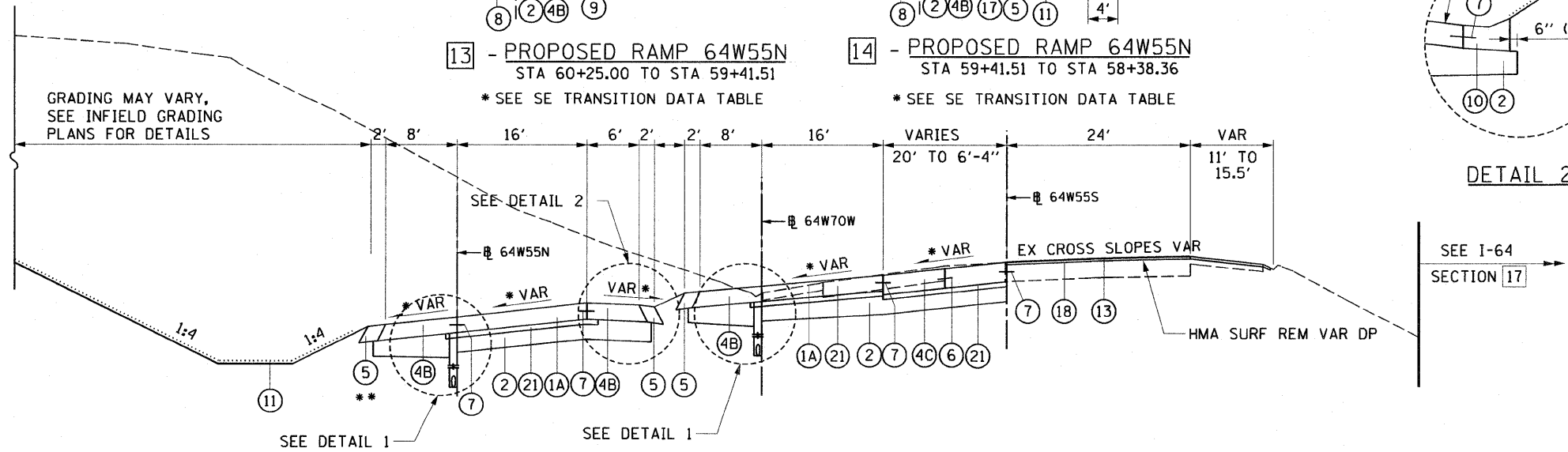
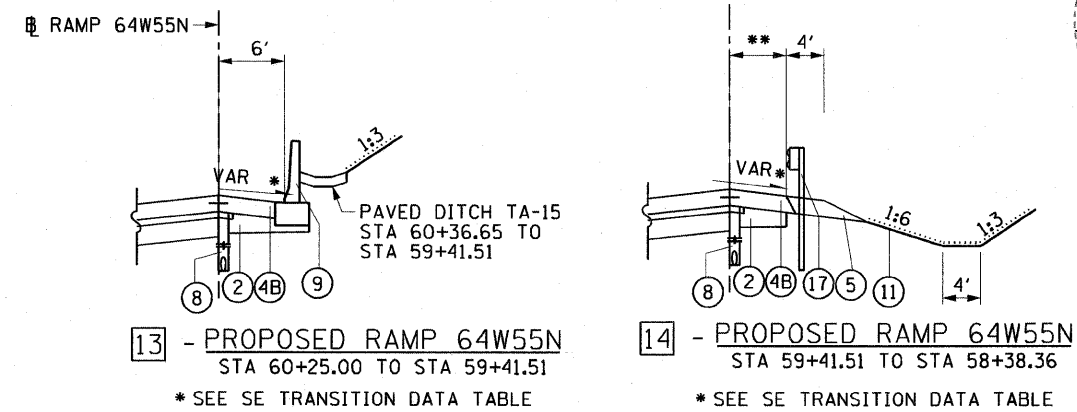
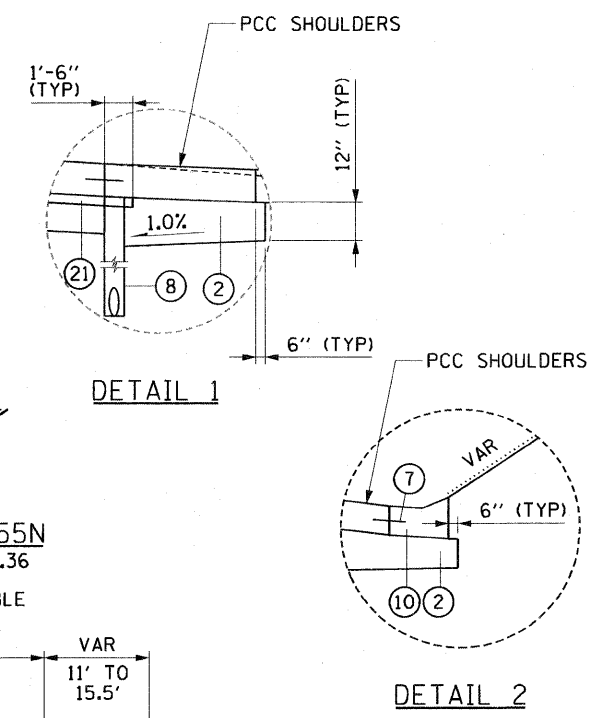
- I-64 TYPICAL SECTION NOTES:**
- FOR HMA SURFACE REMOVAL, VARIABLE DEPTH, THE CONTRACTOR SHALL REMOVE EXISTING HMA OVERLAY TO THE TOP OF EXISTING PCC PAVEMENT. SEE HMA SURFACE REMOVAL TABLES FOR REFERENCE.
 - FOR HMA OVERLAY THICKNESS, SEE HMA OVERLAY TABLES FOR REFERENCE.
 - SEE REMOVAL PLANS FOR EXISTING PAVEMENT CORE INFORMATION.
 - WHEN THE SUPERELEVATION RATE OF THE PAVEMENT IS BETWEEN 0% AND 4% THE SHOULDER SHALL BE SLOPED AT 4%. WHEN THE SUPERELEVATION RATE OF THE PAVEMENT EXCEEDS 4% THE SHOULDER SHALL BE SLOPED SO THAT THE ALGEBRAIC DIFFERENCE BETWEEN PAVEMENT AND SHOULDER SLOPES WILL NOT BE GREATER THAN 8%.

PROPOSED RAMP 64W55N
STA 60+25.00 TO STA 57+43.29
FOR SECTIONS OF RAMP 64W55N
FROM STA 60+25.00 AND UP,
SEE I-55 TYPICAL SECTIONS 8 TO 11

** CONC CURB AND GUTTER TYPE B-6.24 (MODIFIED) FROM
STA 54+25.00 TO 56+75.00 RT (RAMP 64W55N)

* SEE SE TRANSITION DATA TABLE FOR SUPERELEVATION TRANSITIONS
** CONCRETE BARRIER DOUBLE FACE, 42 INCH HEIGHT FROM STA 61+94.88 TO STA 61+46.65

- I-64 PROPOSED LEGEND:**
- PORTLAND CEMENT CONCRETE PAVEMENT
 - 1A - 10 1/2" (JOINTED) (RAMPS)
 - 1B - 12 1/2" (JOINTED)
 - 1C - 14" (JOINTED)
 - AGGREGATE BASE COURSE, TYPE A - 12"
 - CONCRETE GUTTER, TYPE A
 - PORTLAND CEMENT CONCRETE SHOULDERS
 - 4A - 10"
 - 4B - 10 1/2"
 - 4C - 12 1/2"
 - 4D - 14"
 - AGGREGATE SHLDS, TYPE B - SEE PLANS FOR THICKNESS
 - *6 TIE BARS, 30" LONG AT 30" C-C (IF LONGITUDINAL SAWED JOINT) / *6 TIE BARS, 24" LONG AT 24" C-C (IF LONGITUDINAL CONSTRUCTION JOINT) (INCLUDED IN PRICE FOR BID FOR VARIOUS PCC ITEMS)
 - *6 TIE BARS, 24" LONG AT 24" C-C (INCLUDED IN PRICE FOR BID FOR VARIOUS PCC ITEMS)
 - PIPE UNDERDRAINS - 6"
 - CONCRETE BARRIER SINGLE FACE, 42 INCH HEIGHT (SPECIAL)
 - COMB CONCRETE CURB AND GUTTER, TYPE B-6.24 (MODIFIED)
 - SEEDING AND MULCHING (BY OTHERS)
 - NOT USED
 - HMA OVERLAY - SEE NOTE 2
 - COMB CONCRETE CURB AND GUTTER, TYPE B-6.24
 - STONE RIPRAP, CLASS A4
 - CONCRETE BARRIER DOUBLE FACE, 42 INCH HEIGHT
 - STEEL PLATE BEAM GUARDRAIL TYPE A, 6 FOOT POSTS BITUMINOUS MATERIALS (PRIME COAT)
 - CONTINUOUSLY REINFORCED PCC PAVEMENT - 12 1/2"
 - CONTINUOUSLY REINFORCED PCC PAVEMENT - 14"
 - STABILIZED SUBBASE - HOT-MIX ASPHALT, 4"



PROPOSED RAMP 64W55N
STA 57+43.29 TO STA 53+71.71

16 - PROPOSED RAMP 64W70W
STA 61+46.65 TO STA 58+75.98

PROPOSED RAMP 64W55S
STA 116+67.39 TO STA 113+92.13

* SEE SE TRANSITION DATA TABLE FOR SUPERELEVATION TRANSITIONS
** CONC CURB AND GUTTER TYPE B-6.24 (MODIFIED) FROM
STA 57+00.00 TO STA 59+41.51 LT (RAMP 64W55N)
AND STA 54+25.00 TO 56+75.00 RT (RAMP 64W55N)

HOT-MIX ASPHALT MIXTURE REQUIREMENTS

MIXTURE TYPE	AC TYPE	AIR VOIDS
POLYMERIZED HOT-MIX ASPHALT SURFACE COURSE, SMA, N80	SBS 76-22	4% @ 80 Gyr
POLYMERIZED HOT-MIX ASPHALT BINDER COURSE, SMA, N80	SBS 76-22	4% @ 80 Gyr

THE UNIT WEIGHT USED TO CALCULATE ALL HMA SURFACE MIXTURE QUANTITIES IS 112 LBS/SOYD/IN