

STATE OF ILLINOIS
DEPARTMENT OF TRANSPORTATION
DIVISION OF HIGHWAYS
PROPOSED

HIGHWAY PLANS

F.A.I. RTE. 57 / (I-57) & F.A.I. RTE. 74 / (I-74)
SECTION D5 WEED SPRAYING 2012-1
DISTRICT WIDE WEED SPRAYING / WEED CONTROL
CHAMPAIGN & VERMILION COUNTIES

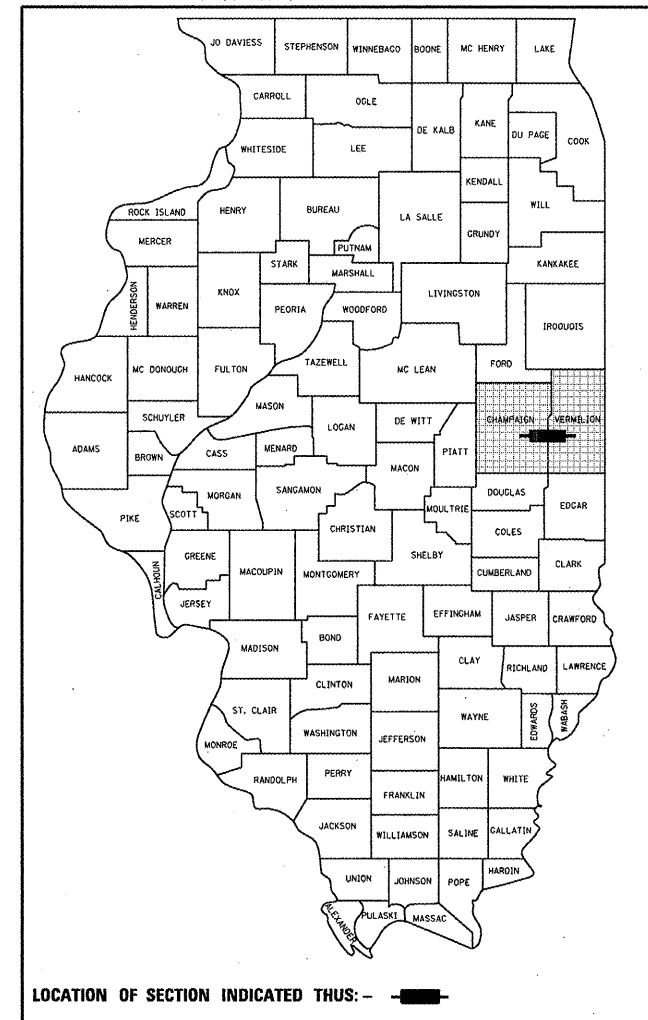
C-95-007-12

SEE PAGES 2-3 FOR DETAILED LOCATION MAPS

F.A.I. RTE.	SECTION	COUNTY	TOTAL SHEETS	SHEET NO.
57,74	D5 WEED SPRAYING 2012-1	ILLINOIS	7	1
CONTRACT NO. 70970				

• CHAMPAIGN, VERMILION

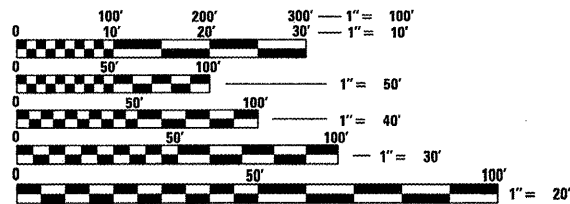
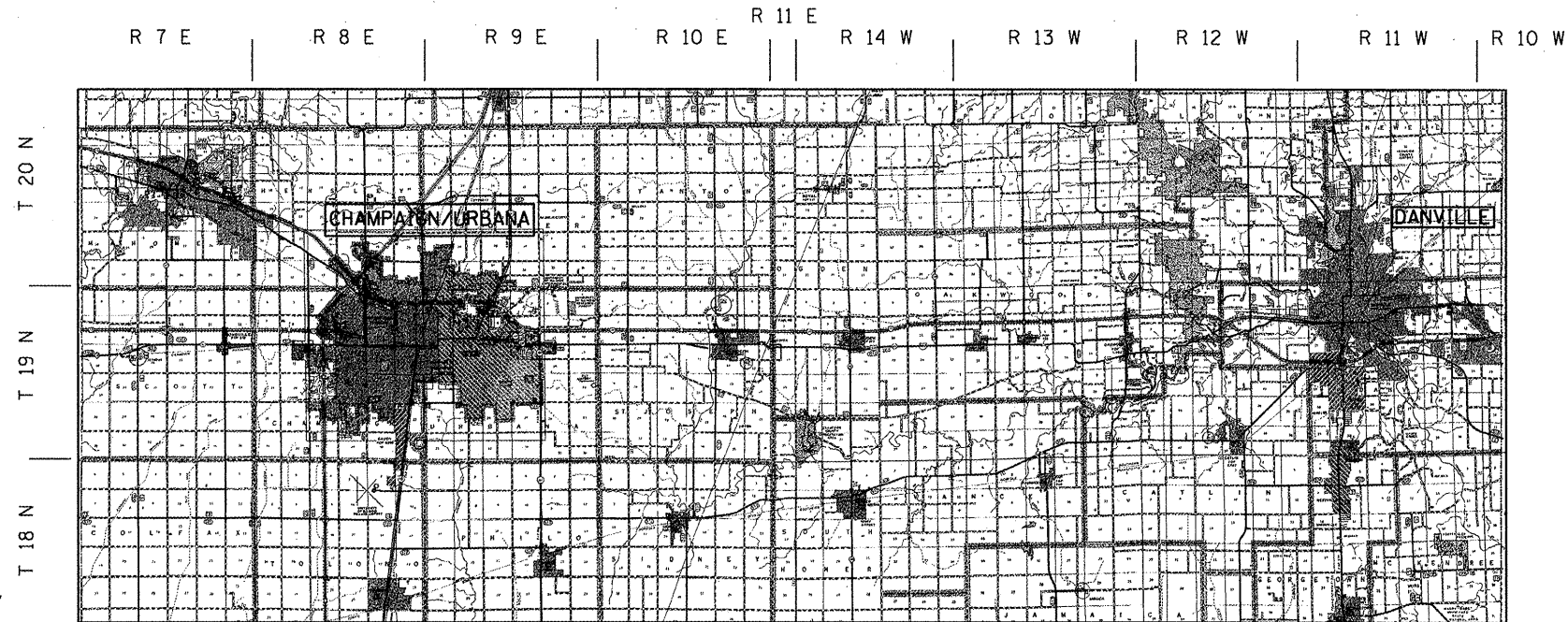
D-95-007-12



FOR INDEX OF SHEETS, SEE SHEET NO. 4
FOR SUMMARY OF QUANTITIES, SEE SHEET NO. 5

CURRENT TRAFFIC DATA

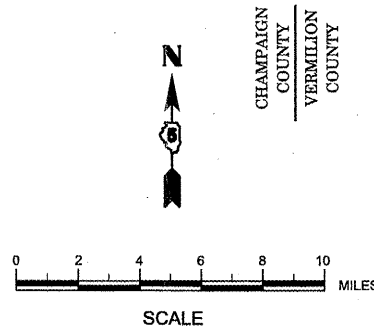
- A: F.A.I. RTE. 74 / (I-74)
FROM IL 47 TO I-57
AVERAGE ADT = 20,700
- B: F.A.I. RTE. 74 / (I-74)
FROM I-57 TO US 45 (CUNNINGHAM)
AVERAGE ADT = 48,700
- C: F.A.I. RTE. 74 / (I-74)
FROM US 45 TO VERMILION COUNTY LINE
AVERAGE ADT = 28,600
- D: F.A.I. RTE. 74 / (I-74)
FROM VERMILION COUNTY LINE
TO US 150 (MLK DR.)
AVERAGE ADT = 24,000
- E: F.A.I. RTE. 74 / (I-74)
FROM US 150 (MLK DR.) TO IL 1
AVERAGE ADT = 20,500
- F: F.A.I. RTE. 74 / (I-74)
FROM IL 1 TO INDIANA STATE LINE
AVERAGE ADT = 21,000
- G: F.A.I. RTE. 57 / (I-57)
FROM MONTICELLO RD. TO CURTIS RD.
AVERAGE ADT = 21,800



FULL SIZE PLANS HAVE BEEN PREPARED USING STANDARD ENGINEERING SCALES. REDUCED SIZED PLANS WILL NOT CONFORM TO STANDARD SCALES. IN MAKING MEASUREMENTS ON REDUCED PLANS, THE ABOVE SCALES MAY BE USED.

J.U.L.I.E.
JOINT UTILITY LOCATION INFORMATION FOR EXCAVATION
1-800-892-0123
OR 811

PROJECT ENGINEER : JASON STULTS
SQUAD LEADER: GREG EAGLIN
DESIGNER: BYRON SMITH
PHONE NUMBER: (217)-465-4181
CONTRACT NO. 70970



GROSS ACRES = 418.00 ACRES
NET ACRES = 418.00 ACRES

STATE OF ILLINOIS
DEPARTMENT OF TRANSPORTATION
DIVISION OF HIGHWAYS

SUBMITTED 0202 20 12

Joseph E. Crowe (KAG)
DEPUTY DIRECTOR OF HIGHWAYS, REGION ENGINEER
March 23, 20 12

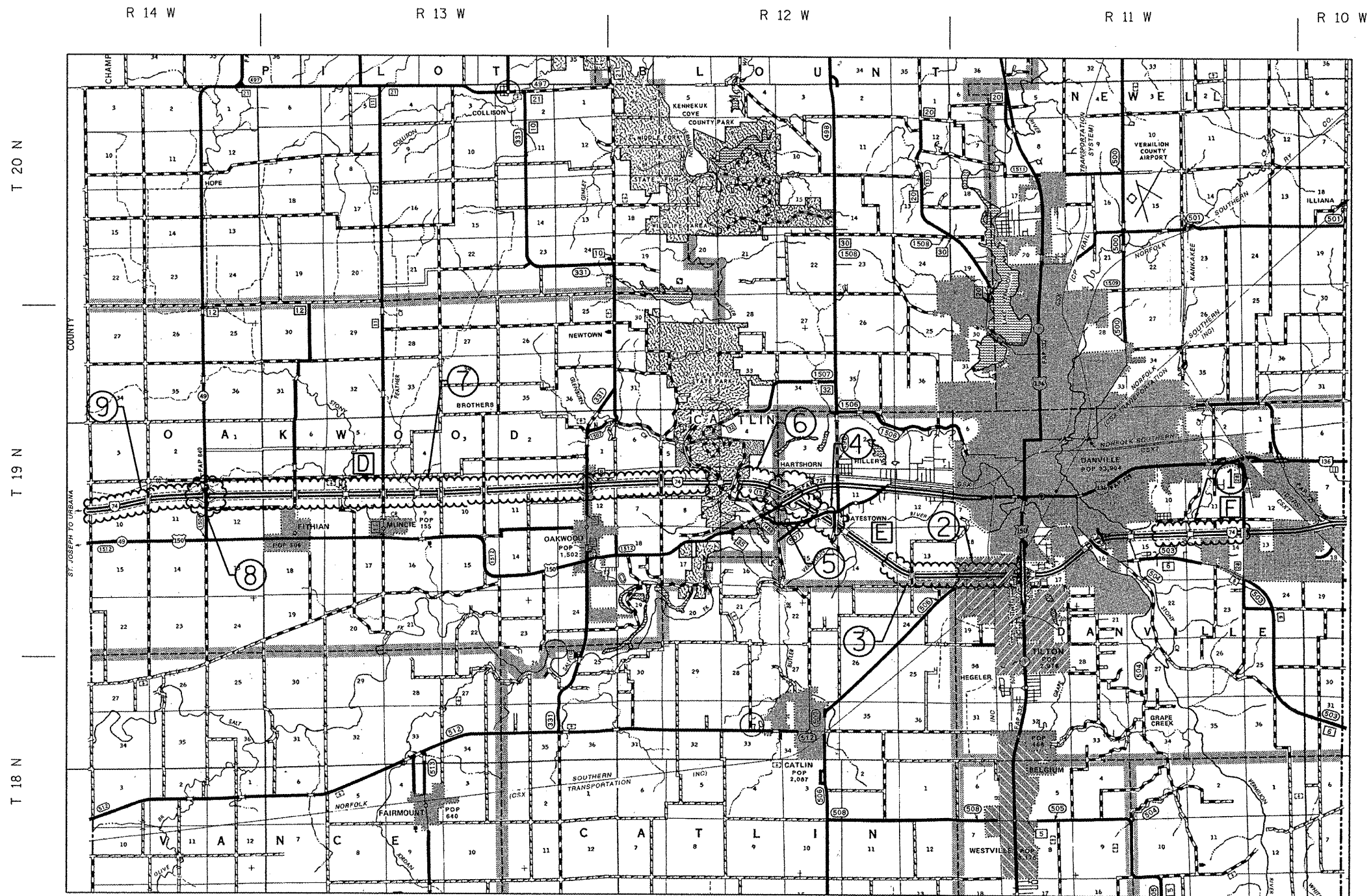
John D. Baranzelli, P.E.
acting ENGINEER OF DESIGN AND ENVIRONMENT
March 23, 20 12

William F. Freyer
acting DIRECTOR OF HIGHWAYS, CHIEF ENGINEER

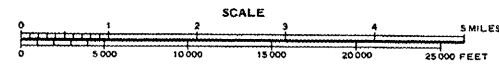
PRINTED BY THE AUTHORITY
OF THE STATE OF ILLINOIS

DETAILED LOCATION MAP

VERMILION COUNTY



- LOCATION
- MAP LOCATION NUMBER
- TRAFFIC DATA



ESTIMATED ACRES IN VERMILION COUNTY = 221.00 ACRES
ACTUAL ACRES IN VERMILION COUNTY = 186.00 ACRES

TOWNSHIPS:
OAKWOOD, CATLIN, DANVILLE

• CHAMPAIGN, VERMILION

FILE NAME :	USER NAME : ceerlockjd	DESIGNED - BS	REVISED -
ai:\pwork\puidot\ceerlockjd\0226516\0570970-sht-loc map.dgn		DRAWN - BBP	REVISED -
	PLOT SCALE = 40,0000' / in.	CHECKED -	REVISED -
	PLOT DATE = 2/2/2012	DATE - 01/24/12	REVISED -

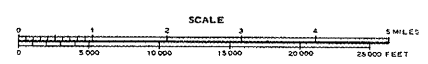
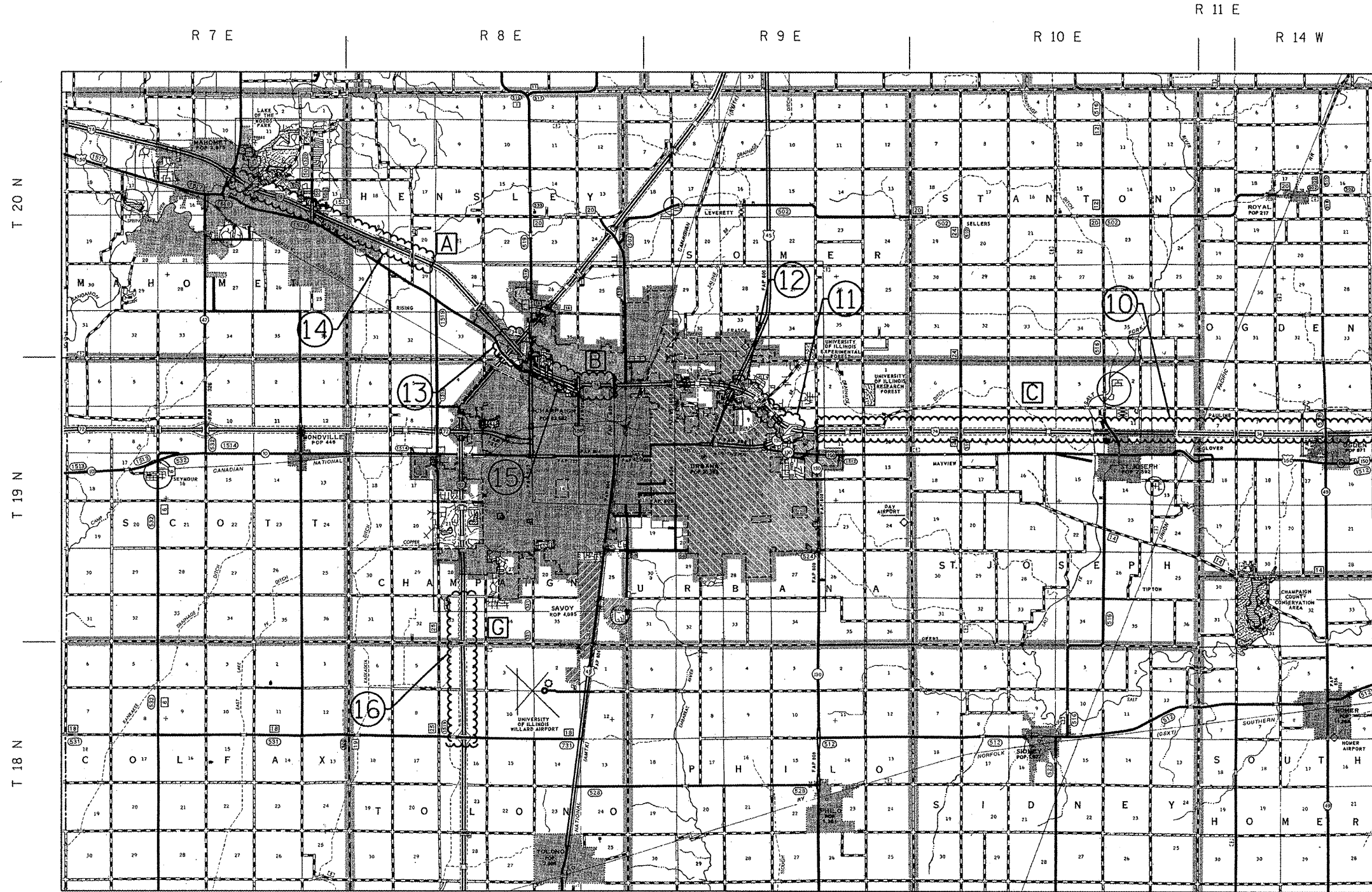
STATE OF ILLINOIS
DEPARTMENT OF TRANSPORTATION

DETAILED LOCATION MAP
VERMILION COUNTY

SCALE: NONE SHEET 1 OF 1 SHEETS STA. TO STA.

F.A.I. RTE.	SECTION	COUNTY	TOTAL SHEETS	SHEET NO.
57.74	D5 WEED SPRAYING 2012-1	•	7	2
CONTRACT NO. 70970				
ILLINOIS FED. AID PROJECT				

DETAILED LOCATION MAP CHAMPAIGN COUNTY



- LOCATION
- # MAP LOCATION NUMBER
- TRAFFIC DATA

ESTIMATED ACRES IN CHAMPAIGN COUNTY = 411.00 ACRES
ACTUAL ACRES IN CHAMPAIGN COUNTY = 232.00 ACRES

TOWNSHIPS:
 MAHOMET, HENSLEY, CHAMPAIGN, TOLONO,
 URBANA, ST. JOSEPH, OGDEN, CHAMPAIGN CITY

• CHAMPAIGN, VERMILION

FILE NAME =	USER NAME = ceerlockjd	DESIGNED - BS	REVISED -
ce:\pw\work\p\idat\ceerlockjd\0276516\0578970-sht-loc map.dgn		DRAWN - BBP	REVISED -
		CHECKED -	REVISED -
		DATE - 01/24/12	REVISED -

**STATE OF ILLINOIS
DEPARTMENT OF TRANSPORTATION**

**DETAILED LOCATION MAP
CHAMPAIGN COUNTY**

SCALE: NONE SHEET 1 OF 1 SHEETS STA. TO STA.

F.A.I. RTE.	SECTION	COUNTY	TOTAL SHEETS	SHEET NO.
57.74	05 WEED SPRAYING 2012-1	•	7	3
CONTRACT NO. 70970				
ILLINOIS FED. AID PROJECT				

INDEX OF SHEETS

SHEET NO.	DESCRIPTION
1	COVER SHEET
2-3	DETAILED LOCATION MAPS
4	INDEX OF SHEETS
4	LIST OF STANDARDS
4	GENERAL NOTES
5	SUMMARY OF QUANTITIES
6-7	SCHEDULE OF QUANTITIES

GENERAL NOTES

G.N.-100
ENGLISH UNITS OF MEASUREMENT SHALL GOVERN OVER AND SUPERSEDE ANY METRIC UNITS SHOWN IN THIS CONTRACT. WHERE INCLUDED, METRIC UNITS ARE FOR INFORMATION ONLY.

G.N.-100A
ELECTRONIC FILES AND/OR ELECTRONIC SURVEY INFORMATION INCLUDING CADD FILES WILL NOT BE AVAILABLE TO THE CONTRACTOR.

G.N.-107.12A
RAILROAD PROTECTIVE LIABILITY INSURANCE AND RAILROAD FLAGGING ARE NOT INCLUDED IN THIS CONTRACT. ALL WEED SPRAYING OPERATIONS SHALL STOP 150 FEET EACH SIDE OF THE CENTERLINE OF RAILROAD TRACKS. THE CENTERLINE ON THE RAILROAD TRACKS SHALL BE DETERMINED IN THE FIELD BY THE RESIDENT ENGINEER.

COMMITMENTS:
THERE ARE NO COMMITMENTS FOR THIS CONTRACT.

LIST OF STANDARDS

STANDARD NO.	NAME OF STANDARD
000001-06	STANDARD SYMBOLS, ABBREVIATIONS AND PATTERNS
001006	DECIMAL OF AN INCH AND OF A FOOT
701101-02	OFF-ROAD OPERATIONS, MULTILANE, 15' (4.5M) TO 24" (600MM) FROM PAVEMENT EDGE
701106-02	OFF-ROAD OPERATIONS, MULTILANE, MORE THAN 15' (4.5M) AWAY
701426-04	LANE CLOSURE, MULTILANE, INTERMITTENT OR MOVING OPERATION, FOR SPEEDS \geq 45 MPH
701901-02	TRAFFIC CONTROL DEVICES

• CHAMPAIGN, VERMILION

FILE NAME =	USER NAME = cearlockjd	DESIGNED - GAE	REVISED -	STATE OF ILLINOIS DEPARTMENT OF TRANSPORTATION	INDEX OF SHEETS, LIST OF STANDARDS & GENERAL NOTES	F.A.I. RTE.	SECTION	COUNTY	TOTAL SHEETS	SHEET NO.
c:\pwwork\pwwork\cearlockjd\0296516\0296516-1.dwg	70970-shr-gennote.dgn	DRAWN - BBP	REVISED -			57.74	05 WEED SPRAYING 2012-1	*	7	4
PLOT SCALE = 40.0000' / 1" =	CHECKED -	REVISED -	REVISED -							
PLOT DATE = 2/2/2012	DATE - 01/31/12	REVISED -	REVISED -		SCALE: NONE	SHEET 1	OF 1	SHEETS	STA.	TO STA.
						ILLINOIS FED. AID PROJECT				
						CONTRACT NO. 70970				

SUMMARY OF QUANTITIES

	LOCATION OF WORK:	LOCATION: 10 LOCATION: 14 LOCATION: 16	LOCATION: 11 LOCATION: 12 LOCATION: 13 LOCATION: 15	LOCATION: 3 LOCATION: 7 LOCATION: 8 LOCATION: 9	LOCATION: 1 LOCATION: 2 LOCATION: 4 LOCATION: 5 LOCATION: 6		
	COUNTY:	CHAMPAIGN RURAL	CHAMPAIGN URBAN	VERMILION RURAL	VERMILION URBAN		
	FUNDING BREAKOUT:	100% STATE	100% STATE	100% STATE	100% STATE		
	CONSTRUCTION TYPE CODE:	0031	0031	0031	0031		
<u>CODE NO.</u>	<u>ITEM</u>	<u>UNIT</u>	<u>TOTAL</u> <u>QUANTITY</u>	<u>QUANTITY</u>	<u>QUANTITY</u>	<u>QUANTITY</u>	<u>QUANTITY</u>
67100100	MOBILIZATION	L SUM	1.0	0.25	0.25	0.25	0.25
K0029636	ESCORT XP HERBICIDE	POUND	26.0	8.6	5.8	7.7	3.9
X0325947	MILESTONE VM	GALLON	23.0	7.7	5.2	6.7	3.4

* CHAMPAIGN, VERMILION

FILE NAME =	USER NAME = ceerlockjd	DESIGNED - GAE	REVISED -	STATE OF ILLINOIS	SUMMARY OF QUANTITIES	F.A.I. RTE.	SECTION	COUNTY	TOTAL SHEETS	SHEET NO.
c:\pwork\pvidot\ceerlockjd\0296516\0570970-shr-S00.dgn		DRAWN - BBP	REVISED -	DEPARTMENT OF TRANSPORTATION		57,74	05 WEED SPRAYING 2012-	*	7	5
	PLOT SCALE = 40.0000 ' / in.	CHECKED -	REVISED -		SCALE: NONE				CONTRACT NO. 70970	
	PLOT DATE = 2/2/2012	DATE - 01/20/12	REVISED -		SHEET 1 OF 1 SHEETS	STA.	TO STA.		ILLINOIS FED. AID PROJECT	

SCHEDULE OF QUANTITIES VERMILION COUNTY

MAP LOCATION	ROUTE	LOCATION	STARTING LOCATION	ENDING LOCATION	ESTIMATED AREA	AMOUNT MILESTONE VM	AMOUNT ESCORT XP	
1	I-74	EB EOP TO FENCE	LYNCH RD IN DANVILLE	2.2 MILES WEST OF LYNCH RD	15.0 ACRES	0.82 GALLON	0.94 POUNDS	URBAN
1	I-74	WB EOP TO FENCE	LYNCH RD IN DANVILLE	2.2 MILES WEST OF LYNCH RD	15.0 ACRES	0.82 GALLON	0.94 POUNDS	URBAN
2	I-74	TILTON INTERCHANGE	RR ON E END	NORTH L ST ON W END	3.0 ACRES	0.16 GALLON	0.19 POUNDS	URBAN
3	I-74	EB EOP TO FENCE	NORTH L ST IN TILTON	1.3 MILES WEST OF L ST IN TILTON	9.0 ACRES	0.49 GALLON	0.56 POUNDS	RURAL
3	I-74	WB EOP TO FENCE	NORTH L ST IN TILTON	1.3 MILES WEST OF L ST IN TILTON	9.0 ACRES	0.49 GALLON	0.56 POUNDS	RURAL
4	I-74	EB EOP TO FENCE	MELVIN R. HOLDEN	MLK INTERCHANGE	3.0 ACRES	0.16 GALLON	0.19 POUNDS	URBAN
			MAUCK LN BRIDGE					
4	I-74	WB EOP TO FENCE	MELVIN R. HOLDEN	MLK INTERCHANGE	3.0 ACRES	0.16 GALLON	0.19 POUNDS	URBAN
			MAUCK LN BRIDGE					
5	I-74	EXTERIOR RAMPS	MLK INTERCHANGE	WB OFF RAMP	2.0 ACRES	0.11 GALLON	0.13 POUNDS	URBAN
5	I-74	EXTERIOR RAMPS	MLK INTERCHANGE	WB ON RAMP	2.0 ACRES	0.11 GALLON	0.13 POUNDS	URBAN
5	I-74	EXTERIOR RAMPS	MLK INTERCHANGE	EB OFF RAMP	2.0 ACRES	0.11 GALLON	0.13 POUNDS	URBAN
5	I-74	EXTERIOR RAMPS	MLK INTERCHANGE	EB ON RAMP	2.0 ACRES	0.11 GALLON	0.13 POUNDS	URBAN
5	I-74	NE INFIELD	MLK INTERCHANGE		2.0 ACRES	0.11 GALLON	0.13 POUNDS	URBAN
5	I-74	SE INFIELD	MLK INTERCHANGE		2.0 ACRES	0.11 GALLON	0.13 POUNDS	URBAN
5	I-74	NW INFIELD	MLK INTERCHANGE		2.0 ACRES	0.11 GALLON	0.13 POUNDS	URBAN
6	I-74	WB EOP TO FENCE	MLK INTERCHANGE	0.7 MILES WEST OF MLK INT.	5.0 ACRES	0.27 GALLON	0.31 POUNDS	URBAN
6	I-74	EB EOP TO FENCE	MLK INTERCHANGE	0.7 MILES WEST OF MLK INT.	5.0 ACRES	0.27 GALLON	0.31 POUNDS	URBAN
7	I-74	WB EOP TO FENCE	MM 208	FITHIAN INTERCHANGE	63.0 ACRES	3.45 GALLON	3.94 POUNDS	RURAL
7	I-74	EB EOP TO FENCE	MM 208	FITHIAN INTERCHANGE	63.0 ACRES	3.45 GALLON	3.94 POUNDS	RURAL
8	I-74	EXTERIOR RAMPS	FITHIAN INTERCHANGE	WB OFF RAMP	2.0 ACRES	0.11 GALLON	0.13 POUNDS	RURAL
8	I-74	EXTERIOR RAMPS	FITHIAN INTERCHANGE	WB ON RAMP	2.0 ACRES	0.11 GALLON	0.13 POUNDS	RURAL
8	I-74	EXTERIOR RAMPS	FITHIAN INTERCHANGE	EB OFF RAMP	2.0 ACRES	0.11 GALLON	0.13 POUNDS	RURAL
8	I-74	EXTERIOR RAMPS	FITHIAN INTERCHANGE	EB ON RAMP	2.0 ACRES	0.11 GALLON	0.13 POUNDS	RURAL
9	I-74	WB EOP TO FENCE	FITHIAN INTERCHANGE	CHAMPAIGN CO LINE	3.0 ACRES	0.16 GALLON	0.19 POUNDS	RURAL
9	I-74	EB EOP TO FENCE	FITHIAN INTERCHANGE	CHAMPAIGN CO LINE	3.0 ACRES	0.16 GALLON	0.19 POUNDS	RURAL

ESTIMATED QUANTITIES =	221.0 ACRES	12.07 GALLON	13.88 POUNDS
ACTUAL QUANTITIES =	186.0 ACRES	10.10 GALLON	11.60 POUNDS

APPLICATION RATES:

AMINOPYRALID: 7 OUNCES (LIQUID) / ACRE
METSULFURON METHYL: 1 OUNCE (DRY) / ACRE

NOTES:

QUANTITIES LISTED IN THE ABOVE SCHEDULE EXCEEDS CONTRACT QUANTITIES. AREAS ARE ESTIMATED AND IT IS KNOWN THAT NOT ALL AREAS WILL BE ACCESSABLE AT THE TIME OF APPLICATION DUE TO WET CONDITIONS OR ADJACENT FIELD CROPS. ADDITIONAL AREAS HAVE BEEN INCLUDED TO ENSURE USE OF TOTAL CONTRACT QUANTITIES.

AT LOCATION 6, THE CONTRACTOR SHALL OMIT WEED SPRAYING OPERATIONS IN PROXIMITY OF THE MIDDLE FORK RIVER.

• CHAMPAIGN, VERMILION

FILE NAME =	USER NAME = ceerlockjd	DESIGNED - GAE	REVISED -	STATE OF ILLINOIS DEPARTMENT OF TRANSPORTATION	SCHEDULE OF QUANTITIES VERMILION COUNTY		F.A.I. RTE.	SECTION	COUNTY	TOTAL SHEETS	SHEET NO.			
c:\pwwork\puidot\ceerlockjd\0296516\DS70970-sht-schedule.dgn		DRAWN - BBP	REVISED -		SCALE: NONE	SHEET 1	OF 1	SHEETS	STA.	TO STA.	57.74	DS WEED SPRAYING 2012-1	7	6
PLOT SCALE = 40.0000' / in.		CHECKED -	REVISED -		CONTRACT NO. 70970									
PLOT DATE = 2/2/2012		DATE - 01/31/12	REVISED -		ILLINOIS FED. AID PROJECT									

SCHEDULE OF QUANTITIES CHAMPAIGN COUNTY

MAP LOCATION	ROUTE	LOCATION	STARTING LOCATION	ENDING LOCATION	ESTIMATED AREA	AMOUNT MILESTONE VM	AMOUNT ESCORT XP	
10	I-74	WB EOP TO FENCE	CHAMPAIGN CO LINE	HIGH CROSS RD URBANA	95.0 ACRES	5.20 GALLON	5.94 POUNDS	RURAL
10	I-74	EB EOP TO FENCE	CHAMPAIGN CO LINE	HIGH CROSS RD URBANA	95.0 ACRES	5.20 GALLON	5.94 POUNDS	RURAL
11	I-74	SE INFIELD	UNIVERSITY AVE		1.0 ACRES	0.50 GALLON	0.06 POUNDS	URBAN
12	I-74	WB EOP TO FENCE	UNIVERSITY AVE	CUNNINGHAM AVE EX 183	14.0 ACRES	0.77 GALLON	0.88 POUNDS	URBAN
12	I-74	EB EOP TO FENCE	UNIVERSITY AVE	CUNNINGHAM AVE EX 183	14.0 ACRES	0.77 GALLON	0.88 POUNDS	URBAN
13	I-74	EXTERIOR RAMPS	I-74 / I-57 INTERCHANGE	WB 74 TO NB 57 RAMP	4.0 ACRES	0.22 GALLON	0.25 POUNDS	URBAN
13	I-74	EXTERIOR RAMPS	I-74 / I-57 INTERCHANGE	SB 57 TO WB 74	4.0 ACRES	0.22 GALLON	0.25 POUNDS	URBAN
13	I-74	EXTERIOR RAMPS	I-74 / I-57 INTERCHANGE	EB 74 TO SB 57	4.0 ACRES	0.22 GALLON	0.25 POUNDS	URBAN
13	I-74	EXTERIOR RAMPS	I-74 / I-57 INTERCHANGE	NB 57 TO EB 74	4.0 ACRES	0.22 GALLON	0.25 POUNDS	URBAN
14	I-74	WB EOP TO FENCE	2.0 MILES W OF I-57	IL 47	46.0 ACRES	2.52 GALLON	2.88 POUNDS	RURAL
14	I-74	EB EOP TO FENCE	2.0 MILES W OF I-57	IL 47	46.0 ACRES	2.52 GALLON	2.88 POUNDS	RURAL
15	I-57	NB EOP TO FENCE	I-57 / I-74 INTERCHANGE	MARKET ST EX 240	21.0 ACRES	1.15 GALLON	1.31 POUNDS	URBAN
15	I-57	SB EOP TO FENCE	I-57 / I-74 INTERCHANGE	MARKET ST EX 240	21.0 ACRES	1.15 GALLON	1.31 POUNDS	URBAN
16	I-57	SB EOP TO FENCE	CURTIS RD EX 232	MONTICELLO RD EX 229	21.0 ACRES	1.15 GALLON	1.31 POUNDS	RURAL
16	I-57	NB EOP TO FENCE	CURTIS RD EX 232	MONTICELLO RD EX 229	21.0 ACRES	1.15 GALLON	1.31 POUNDS	RURAL

ESTIMATED QUANTITIES =	411.0 ACRES	22.96 GALLON	25.70 POUNDS
ACTUAL QUANTITIES =	232.0 ACRES	12.90 GALLON	14.40 POUNDS

APPLICATION RATES:
 AMINOPYRALID: 7 OUNCES (LIQUID) / ACRE
 METSULFURON METHYL: 1 OUNCE (DRY) / ACRE

NOTES:
 QUANTITIES LISTED IN THE ABOVE SCHEDULE EXCEEDS CONTRACT QUANTITIES. AREAS ARE ESTIMATED AND IT IS KNOWN THAT NOT ALL AREAS WILL BE ACCESSABLE AT THE TIME OF APPLICATION DUE TO WET CONDITIONS OR ADJACENT FIELD CROPS. ADDITIONAL AREAS HAVE BEEN INCLUDED TO ENSURE USE OF TOTAL CONTRACT QUANTITIES.

AT LOCATION 14, THE CONTRACTOR SHALL OMIT WEED SPRAYING OPERATIONS IN PROXIMITY OF THE SANGAMON RIVER.

• CHAMPAIGN, VERMILION

FILE NAME :	USER NAME : ceerlockjd	DESIGNED - GAE	REVISED -	STATE OF ILLINOIS DEPARTMENT OF TRANSPORTATION	SCHEDULE OF QUANTITIES CHAMPAIGN COUNTY			F.A.I. RTE.	SECTION	COUNTY	TOTAL SHEETS	SHEET NO.			
es:\pwork\pwork\ceerlockjd\0296516\0570970-sht-schedule.dgn		DRAWN - BBP	REVISED -		SCALE: NONE	SHEET 1	OF 1	SHEETS	STA.	TO STA.	57.74	05 WEED SPRAYING 2012-1	*	7	7
		CHECKED -	REVISED -		CONTRACT NO. 70970										
		DATE - 01/31/12	REVISED -		ILLINOIS FED. AID PROJECT										