

STATE OF ILLINOIS
DEPARTMENT OF TRANSPORTATION
DIVISION OF HIGHWAYS

**PROPOSED
HIGHWAY PLANS**

FAP 687 IL. RT. 95
SECTION (123B)I
CONTRACT MAINTENANCE
FULTON COUNTY
C-94-001-12

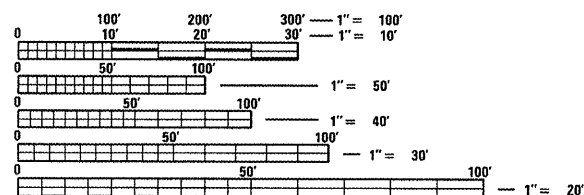
F.A.P. RTE.	SECTION	COUNTY	TOTAL SHEETS	SHEET NO.
687	(123B)I	FULTON	14	1
FED. ROAD DIST. NO. 4		ILLINOIS	CONTRACT NO. 68A58	

INDEX OF SHEETS:

- 1. COVER SHEET
- 2. COMMITMENTS & GENERAL NOTES
- 3. SUMMARY OF QUANTITIES
- 4-5. SCHEDULE OF QUANTITIES
- 6. GENERAL LAYOUT
- 7. TRAFFIC CONTROL
- 8-14. REPAIR DETAILS

STANDARDS:

- 701001-02 701901-02
- 701011-02 704001-07
- 701201-04 780001-03
- 701321-12

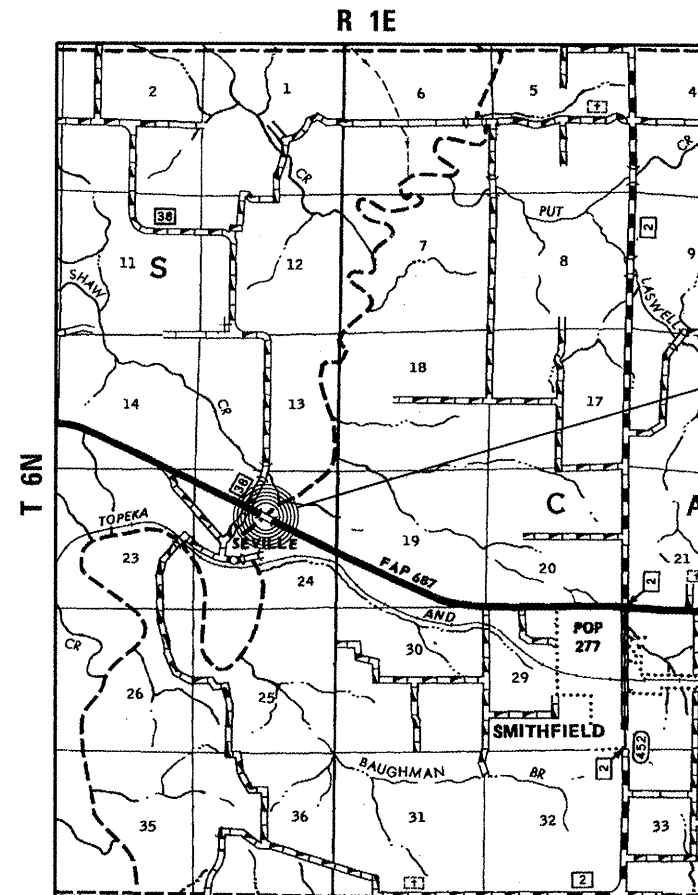


FULL SIZE PLANS HAVE BEEN PREPARED USING STANDARD ENGINEERING SCALES. REDUCED SIZED PLANS WILL NOT CONFORM TO STANDARD SCALES. IN MAKING MEASUREMENTS ON REDUCED PLANS, THE ABOVE SCALES MAY BE USED.

J.U.L.I.E.
JOINT UTILITY LOCATION INFORMATION FOR EXCAVATION
1-800-892-0123
OR 811

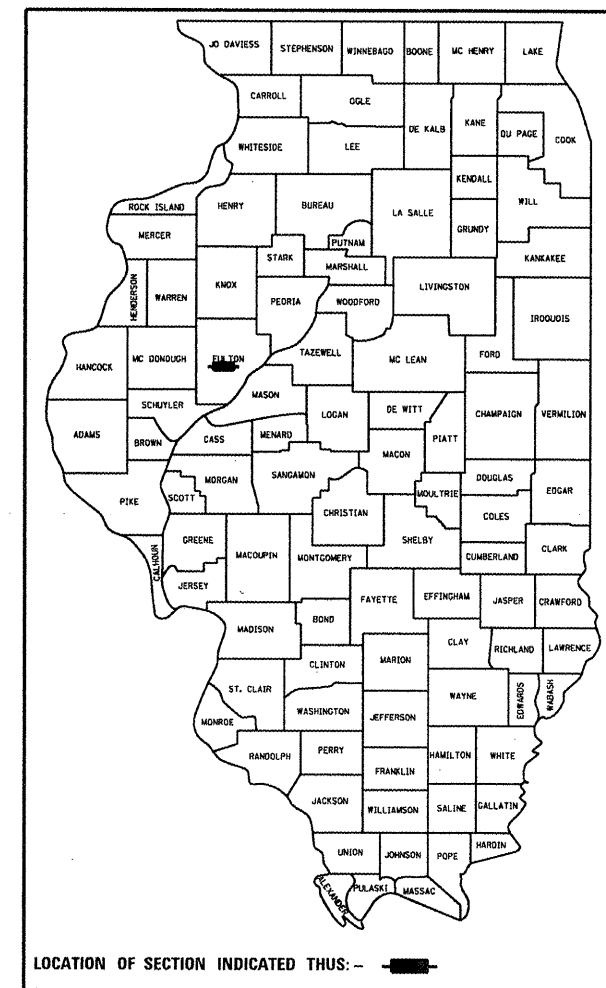
PROJECT ENGINEER: MARK ECKHOFF

CONTRACT NO. 68A58
CATALOG NO. 034706-00D



PROJECT CONSISTS CONCRETE DECK PATCHING, AND SUBSTRUCTURE REPAIR TO STRUCTURE CARRYING IL. 95 OVER SPOON RIVER (SN.029-0025), TWO MILES WEST OF SMITHFIELD

D-94-002-12



LOCATION OF SECTION INDICATED THUS: - [black rectangle] -

STATE OF ILLINOIS
DEPARTMENT OF TRANSPORTATION
DIVISION OF HIGHWAYS

SUBMITTED Feb 8 20 12
Jasper E. Cowles
DEPUTY DIRECTOR OF HIGHWAYS, REGION ENGINEER

March 23 20 12
John D. Baranzelli, PE, Ia
actg ENGINEER OF DESIGN AND ENVIRONMENT

March 23 20 12
William R. Freyer, Ia
actg DIRECTOR OF HIGHWAYS, CHIEF ENGINEER

PRINTED BY THE AUTHORITY
OF THE STATE OF ILLINOIS

COMMITMENTS

No commitments have been made for this project.

GENERAL NOTES

Plan dimensions and details relative to existing plans are subject to routine variations. The Contractor shall field verify existing dimensions and details affecting new construction and make necessary approved adjustments prior to construction or ordering of materials. Such variations shall not be cause for additional compensation for a change in scope of the work, however, the Contractor will be paid for the quantity actually furnished based upon the unit price bid for the work.

ENVIRONMENTAL REVIEWS

Prior to the use of any proposed borrow areas, use areas (temporary access roads, detours, run-arounds, etc.) and/or waste areas, the Contractor shall file the required environmental resource request surveys according to Section 107.22 of the Standard Specifications. These surveys are required in order for the Department to conduct cultural and biological resource surveys for the proposed site.

Prior to any waste materials being removed from the construction site the required environmental resource surveys will need to be obtained and filed by the Contractor. Excess waste products removed from the construction site shall be disposed of as required in Section 202.03 of the Standard Specifications.

Any protruding metal bars shall be removed prior to the disposal of broken concrete at approved disposal sites.

The required environmental resource documentation shall include the following:

- * BDE Form 2289 (Environmental Survey Request)
- * A location map showing the size limits and location of the use area
- * Signed property owner agreement form-D4 PI0100
- * Color photographs depicting the use area
- * Borrow Area Entry Agreement form-D4 PI0101

Please note that a minimum of two weeks shall be allowed for the District to obtain the required environmental clearances.

Reinforcement bars shall conform to the requirements of ASTM A 706 Grade 60 (IL Modified). See Special Provisions.

Reinforcement bars dsignated (E) shall be epoxy coated.

UTILITIES – LOCATIONS /INFORMATION ON PLANS

The locations and aproximate depths of existing water mains, gas mains, sewers, electric power lines, telephone lines and other utilities as shown on the plans are based on careful field investigation and the best information available, but they are not guaranteed. It shall be the Contractor's responsibility to ascertain exact location from the utility companies and by field inspection.

JOB SPECIFIC NOTES

Cleaning and metallizing of the existing structural concrete surfaces shall be as specified in the Special Provisions for "Thermal Spraying (Metallizing) Bridge Concrete Surface". All metallized surfaces shall be sealed with an IDOT approved sealer applied at a DFT of one to two mils thickness.

The metallizing Contractor's prequalifications and Applicator's certification are not required to be met for this project. A technical representative from the metallizing equipment manufacturer shall be onsite and readily available for technical guidance and consultation for the first three days of metallizing work on the project. If performance passes all QC/QA tests and is proved satisfactory to the Engineer, the representative will no longer be required onsite, but shall remain available for future consultation on this project.

TRAFFIC CONTROL PLAN

1. "LANE CLOSURE, 2L, 2W, BRIDGE REPAIR WITH BARRIER" traffic control standard and additional plan sheet(s) shall be used during construction of this project.
2. On-site adjustments of traffic lane taper lengths or signage locations may be used to compensate for distance from construction work area to side road entrances.

S:\GENY_DRAFTY\STOPLANS\SOI\0101_68458\SN.029-0025.dgn

FILE NAME = #FILEL#	USER NAME = #USER#	DESIGNED - _____	REVISED - _____	STATE OF ILLINOIS DEPARTMENT OF TRANSPORTATION	COMMITMENTS & GENERAL NOTES SN.029-0025 IL.95 OVER SPOON RIVER	F.A.P. RTE. 687	SECTION (123B)1	COUNTY FULTON	TOTAL SHEETS 14	SHEET NO. 2		
	PLOT SCALE = #SCALE#	CHECKED - _____	REVISED - _____			SCALE: _____	SHEET NO. 2 OF _____ SHEETS	STA. _____	TO STA. _____	CONTRACT MAINT. BRIDGE REPAIRS CONTRACT# 68A58		
	PLOT DATE = #DATE#	DATE - _____	REVISED - _____			ILLINOIS FED. AID PROJECT						

SUMMARY OF QUANTITIES

**100% STATE FUNDS
CONSTRUCTION CODE 0014
FULTON COUNTY**

CODE NO.	ITEM	UNIT	RURAL	TOTAL
67100100	MOBILIZATION	LSUM	1	1
70100405	TRAFFIC CONTROL AND PROTECTION, STANDARD 701321	EACH	1	1
70100450	TRAFFIC CONTROL AND PROTECTION, STANDARD 701201	LSUM	1	1
70106500	TEMPORARY BRIDGE TRAFFIC SIGNALS	EACH	1	1
70106700	TEMPORARY RUMBLE STRIP	EACH	12	12
70106800	CHANGEABLE MESSAGE SIGN	CALMO	2	2
* 70300520	PAVEMENT MARKING TAPE, TYPE III, 4"	FOOT	3628	3628
70301000	WORKZONE PAVEMENT MARKING REMOVAL	SQFT	1210	1210
70400100	TEMPORARY CONCRETE BARRIER	FOOT	687.5	687.5
70400200	RELOCATE TEMPORARY CONCRETE BARRIER	FOOT	687.5	687.5
* 78005110	EPOXY MARKING - LINE, 4" └ PAVEMENT	FOOT	1402	1402
78300100	PAVEMENT MARKING REMOVAL	SQFT	494	494
X0326105	THERMAL SPRAYING (METALIZING) BRIDGE CONCRETE SURFACE	SQFT	270	270
Z0012754	STRUCTURAL REPAIR OF CONCRETE (DEPTH EQUAL TO OR LESS THAN 5 INCHES)	SQFT	12	12
Z0016200	DECK SLAB REPAIR (PARTIAL)	SOYD	25	25
Z0030250	IMPACT ATTENUATORS, TEMPORARY (NON-REDIRECTIVE), TEST LEVEL 3	EACH	2	2
Z0030350	IMPACT ATTENUATORS, RELOCATE (NON-REDIRECTIVE), TEST LEVEL 3	EACH	2	2

S:\GEN\DRFTT\STDP\INS\SQUAD\41_68A58\SN.029-0025.dgn

FILE NAME =	USER NAME = *USER*	DESIGNED - _____	REVISED - _____	STATE OF ILLINOIS DEPARTMENT OF TRANSPORTATION	SUMMARY OF QUANTITIES SN.029-0025 IL.95 OVER SPOON RIVER	F.A.P. RTE.	SECTION	COUNTY	TOTAL SHEETS	SHEET NO.	
#FILE#		DRAWN - _____	REVISED - _____			687	(123B)	FULTON	14	3	
		CHECKED - _____	REVISED - _____			CONTRACT MAINT. BRIDGE REPAIRS		CONTRACT: 68A58			
		DATE - _____	REVISED - _____			SCALE: _____ SHEET NO. _____ OF _____ SHEETS STA. _____ TO STA. _____		ILLINOIS FED. AID PROJECT			

SCHEDULE OF QUANTITIES

MOBILIZATION

LOCATION	LSUM
JOBSITE	1
TOTAL	1

CHANGEABLE MESSAGE SIGN

LOCATION	CALMO
East & West Jobsite Approaches	2
TOTAL	2

EPOXY MRKG.-LINE, 4"

LOCATION	FOOT
Jobsite - SN.029-0025	1482
TOTAL	1482

IMPACT ATTENUATORS, TEMP. NRD, TL 3

LOCATION	EACH
Jobsite - SN.029-0025	2
TOTAL	2

T.C.& P STANDARD 701321

LOCATION	EACH
JOBSITE	1
TOTAL	1

PVMT. MRKG. TAPE, TYPE III, 4"

LOCATION	FOOT
Jobsite Traffic Staging Lanes	3628
TOTAL	3628

PVMT. MRKG. REMOVAL

LOCATION	FOOT
Jobsite - SN.029-0025	1482
TOTAL	1482

IMPACT ATTENUATORS, RELOCATE NRD, TL 3

LOCATION	EACH
Jobsite - SN.029-0025	2
TOTAL	2

T.C.& P STANDARD 701201

LOCATION	LSUM
JOBSITE	1
TOTAL	1

WORKZONE PVMT. MRKG. REMOVAL

LOCATION	SQFT
Jobsite Traffic Staging Lanes	1210
TOTAL	1210

STRUCTURAL REPAIR OF CONCRETE (<= 5")

LOCATION	SQFT
Pier 1 Cap (South End)	12
TOTAL	12

TEMP. BR. TRAFFIC SIGNALS

LOCATION	EACH
Traffic Staging Approaches	1
TOTAL	1

TEMP. CONC. BARRIER

LOCATION	FOOT
Jobsite - SN.029-0025	687.5
TOTAL	687.5

THERMAL SPRAYING (METALIZING) BR. CONC. SFC.

LOCATION	SQFT
Bent Piling Surfaces	270
TOTAL	270

TEMP. RUMBLE STRIP

LOCATION	EACH
Jobsite Approaches	12
TOTAL	12

RELOCATE TEMP. CONC. BARRIER

LOCATION	FOOT
Jobsite - SN.029-0025	687.5
TOTAL	687.5

DECK SLAB REPAIR (PARTIAL)

LOCATION	SQYD
Jobsite	25
TOTAL	25

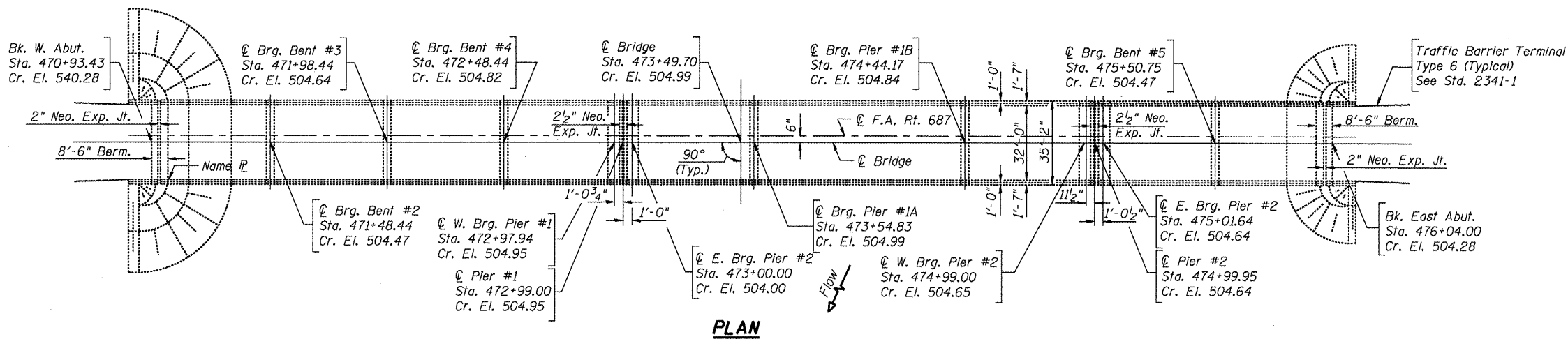
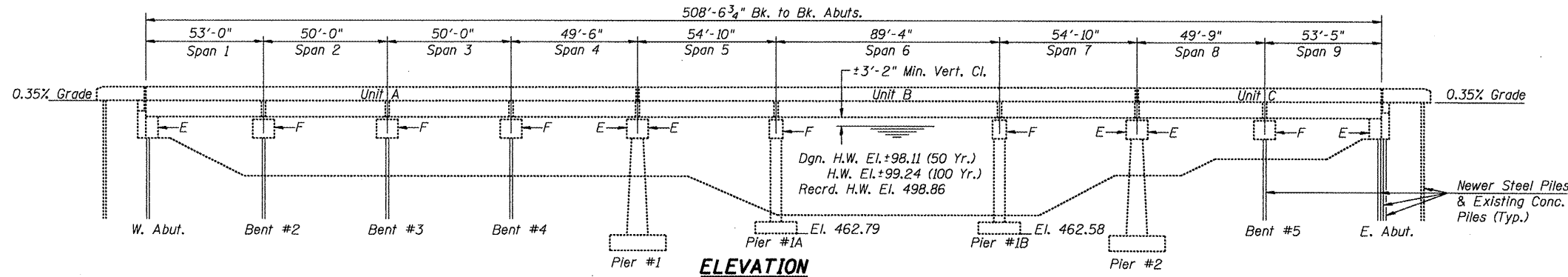
S:\GEN. DRFTY. STDRPLNS. S0400141_68A58.SN.029-0025.dwg

FILE NAME =	USER NAME = *USER*	DESIGNED -	REVISED -	STATE OF ILLINOIS DEPARTMENT OF TRANSPORTATION	SCHEDULE OF QUANTITIES SN.029-0025 IL.95 OVER SPOON RIVER	F.A.P. RTE. 687	SECTION (123B)	COUNTY FULTON	TOTAL SHEETS 14	SHEET NO. 4
#FILE#	PLOT SCALE = *SCALE*	CHECKED -	REVISED -	SCALE: _____ SHEET NO. ____ OF ____ SHEETS STA. _____ TO STA. _____		CONTRACT MAINT. BRIDGE REPAIRS		CONTRACT: 68A58		
	PLOT DATE = *DATE*	DATE -	REVISED -	<small>ILLINOIS FED. AID PROJECT</small>						

B.M.-Chiseled notch on top of headwall
30.4' Rt. of Sta. 467+25 El. 503.96

GENERAL NOTES

Plan dimensions and details relative to existing structure have been taken from existing plans and are subject to nominal construction variations. It shall be the Contractor's responsibility to verify such dimensions and details in the field and make necessary approved adjustments prior to construction or ordering of materials. Such variations shall not be cause for additional compensation for a change in the scope of the work, however, the Contractor will be paid for the quantity actually furnished at the unit price bid for the work.
Protective Coat shall not be applied to surfaces to which Waterproofing Membrane System is applied.



DESIGN SPECIFICATIONS

2002 AASHTO Standard Specifications - 17th ed.

LOADING HS20-44

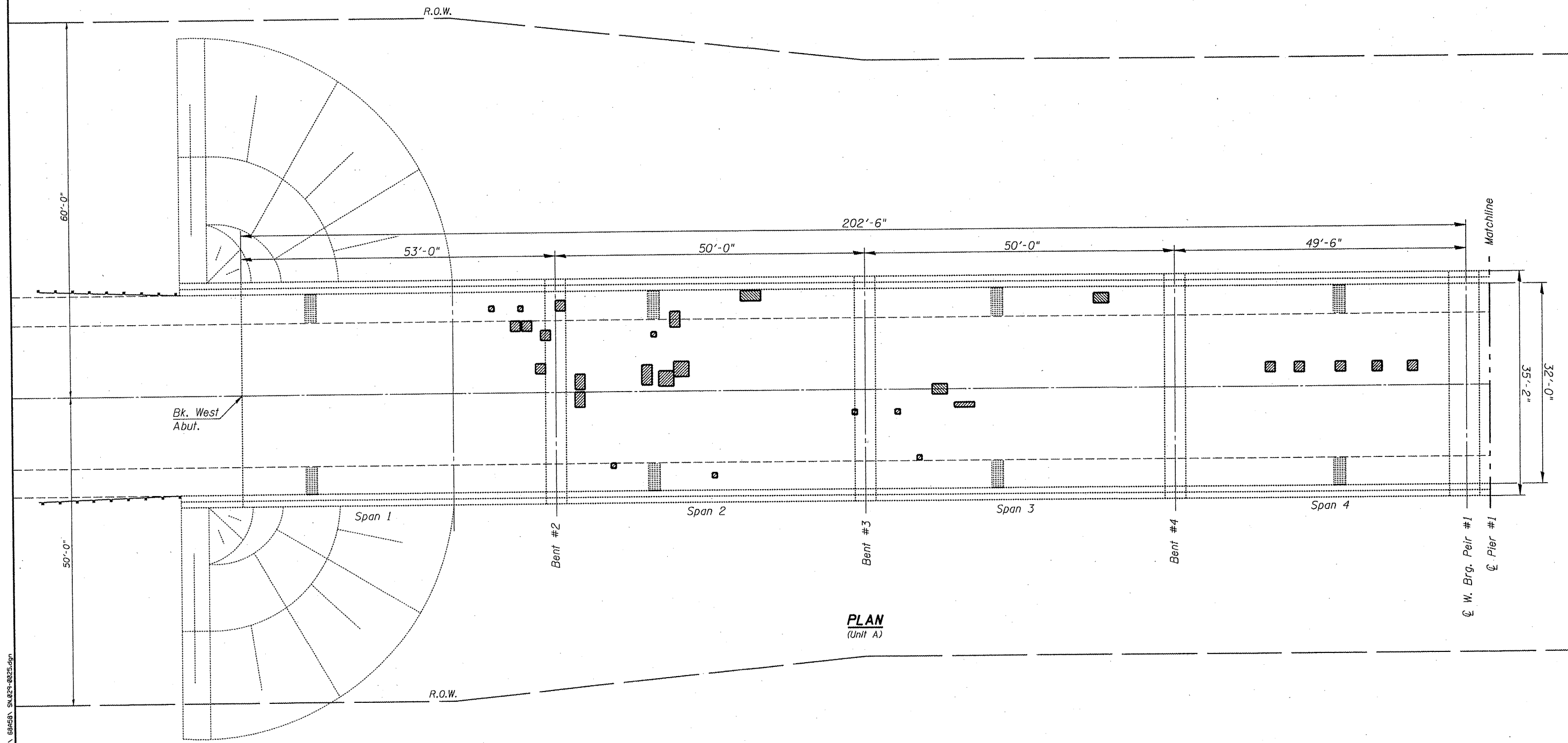
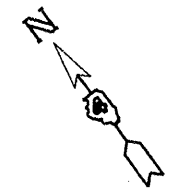
Allow 25#/sq. ft. for future wearing surface.

TOTAL BILL OF MATERIAL

Item	Unit	Total
Structural Repair of Concrete (equal to or less than 5 Inches)	SQFT	12
Thermal Spraying (Metalizing) Bridge Concrete Surface	SQFT	270
Deck Slab Repair (Partial)	SQYD	25

S:\GENY_DRAFT\STODOLINSKI_SOURDIA\BRIDGE_S\029-0025.dgn

FILE NAME = #FILE#	USER NAME = #USER#	DESIGNED - CEJ	REVISED -	STATE OF ILLINOIS DEPARTMENT OF TRANSPORTATION	GENERAL PLAN & ELEVATION		F.A.P. RTE. 687	SECTION (125B)	COUNTY FULTON	TOTAL SHEETS 14	SHEET NO. 8	
	PLOT SCALE = #SCALE#	CHECKED -	REVISED -		SN.029-0025 IL.95 OVER SPOON RIVER		CONTRACT MAINT. BRIDGE REPAIRS		CONTRACT: 68A58			
	PLOT DATE = #DATE#	DATE - 11/15/2011	REVISED -		SCALE: _____ SHEET NO. ____ OF ____ SHEETS STA. _____ TO STA. _____		ILLINOIS FED. AID PROJECT					
					ILLINOIS FED. AID PROJECT							



PLAN
(Unit A)

Deck survey chart shown on sheet 5 of 14

NOTE
Deck Slab Repair locations and quantities are estimated from an actual "deck sounding" practice. Total contract quantity is based on this result plus 15%. Field verification of patch locations is recommended to be done by the Engineer before saw cutting begins.

FILE NAME =
#FILE#

USER NAME = *USER*	DESIGNED -	REVISED -
PLOT SCALE = *SCALE*	DRAWN -	REVISED -
PLOT DATE = *DATE*	CHECKED -	REVISED -
	DATE -	REVISED -

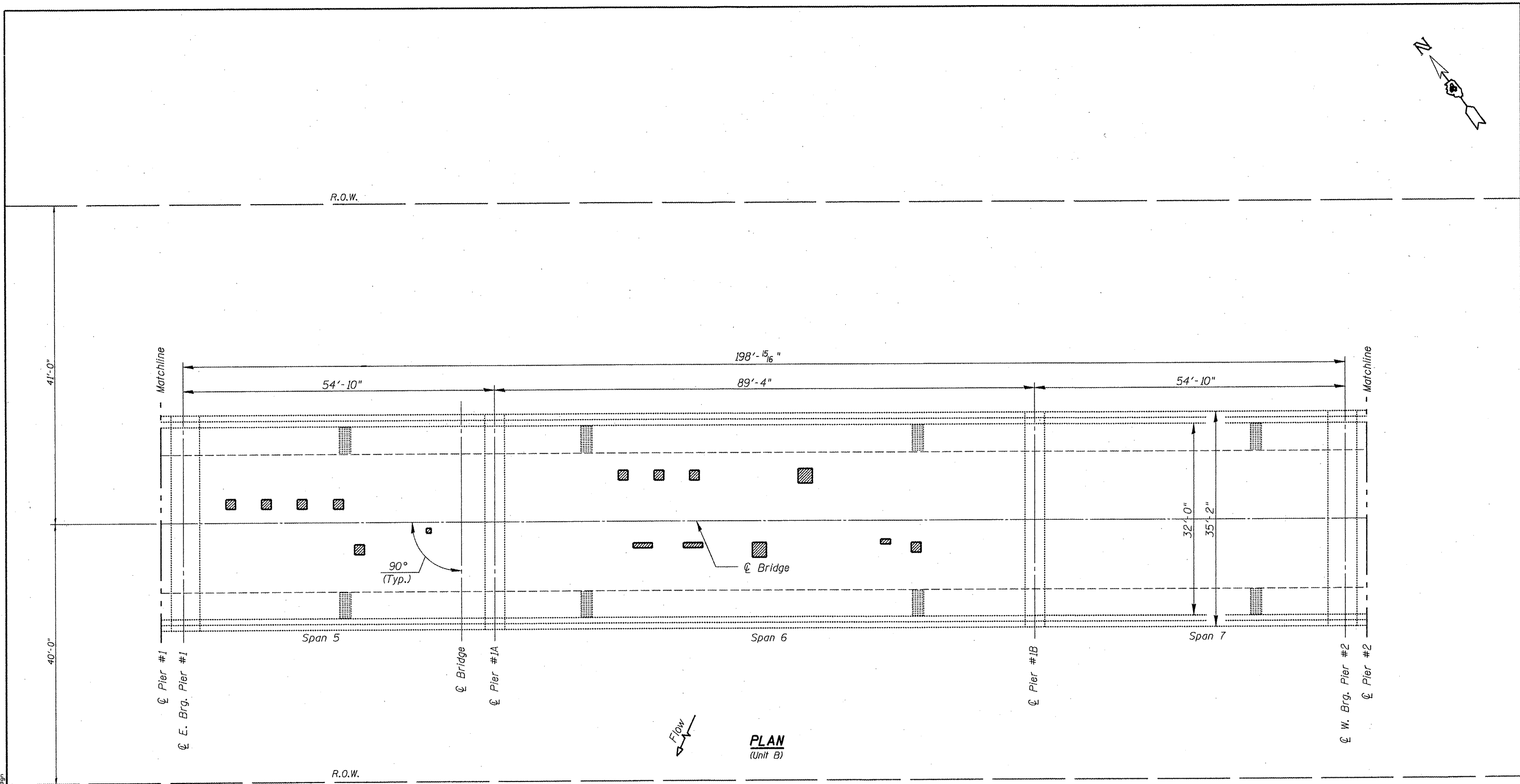
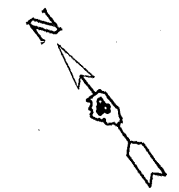
STATE OF ILLINOIS
DEPARTMENT OF TRANSPORTATION

DECK PATCHING PLAN
SN.029-0025 IL.95 OVER SPOON RIVER

SCALE: _____ SHEET NO. _____ OF _____ SHEETS STA. _____ TO STA. _____

F.A.P. RTE.	SECTION	COUNTY	TOTAL SHEETS	SHEET NO.
687	(123B)	FULTON	14	9
CONTRACT MAINT. BRIDGE REPAIRS			CONTRACT: 68A58	
ILLINOIS FED. AID PROJECT				

S:\GEN. DRAFTY. STD\PLNS. SQUAD\1. 68A58. SN.029-0025.dgn

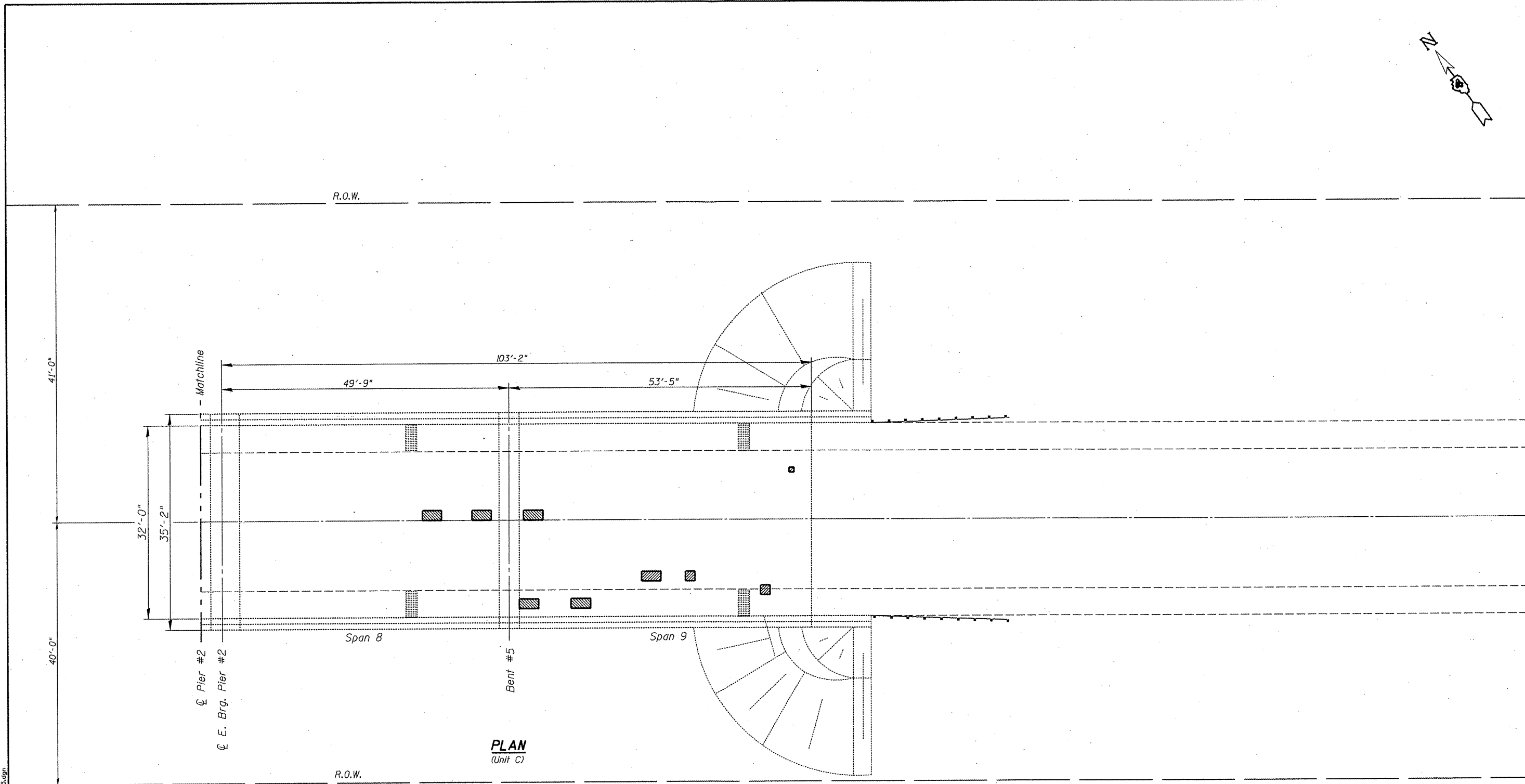
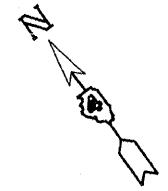


S:\GEN. DRAFT. STD\PLANS\ SQUAD\1. 68A58. SN.029-0025.dgn

NOTE
Deck Slab Repair locations and quantities are estimated from an actual "deck sounding" practice. Total contract quantity is based on this result plus 15%. Field verification of patch locations is recommended to be done by the Engineer before saw cutting begins.

Deck survey chart shown on sheet 5 of 14

FILE NAME =	USER NAME = *USER*	DESIGNED -	REVISED -	STATE OF ILLINOIS DEPARTMENT OF TRANSPORTATION	DECK PATCHING PLAN		F.A.P. RTE.	SECTION	COUNTY	TOTAL SHEETS	SHEET NO.
FILEL		DRAWN -	REVISED -		SN.029-0025 IL.95 OVER SPOON RIVER		687	(123B)I	FULTON	14	10
	PLOT SCALE = *SCALE*	CHECKED -	REVISED -		SCALE: _____	SHEET NO. _____ OF _____ SHEETS	STA. _____ TO STA. _____	CONTRACT MAINT. BRIDGE REPAIRS		CONTRACT# 68A58	
	PLOT DATE = *DATE*	DATE -	REVISED -		ILLINOIS FED. AID PROJECT						



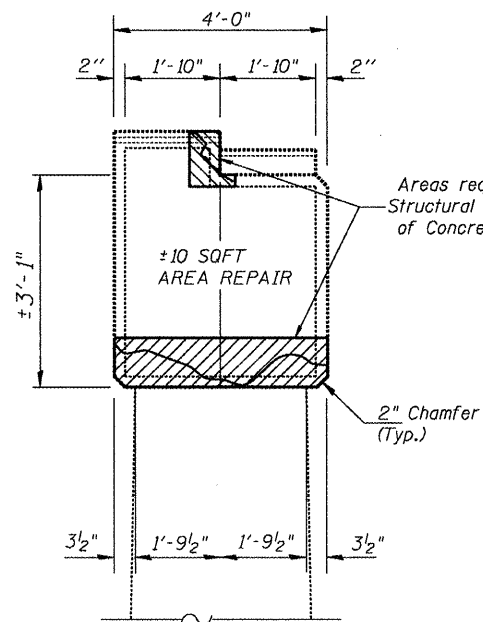
PLAN
(Unit C)

Deck survey chart shown on sheet 5 of 14

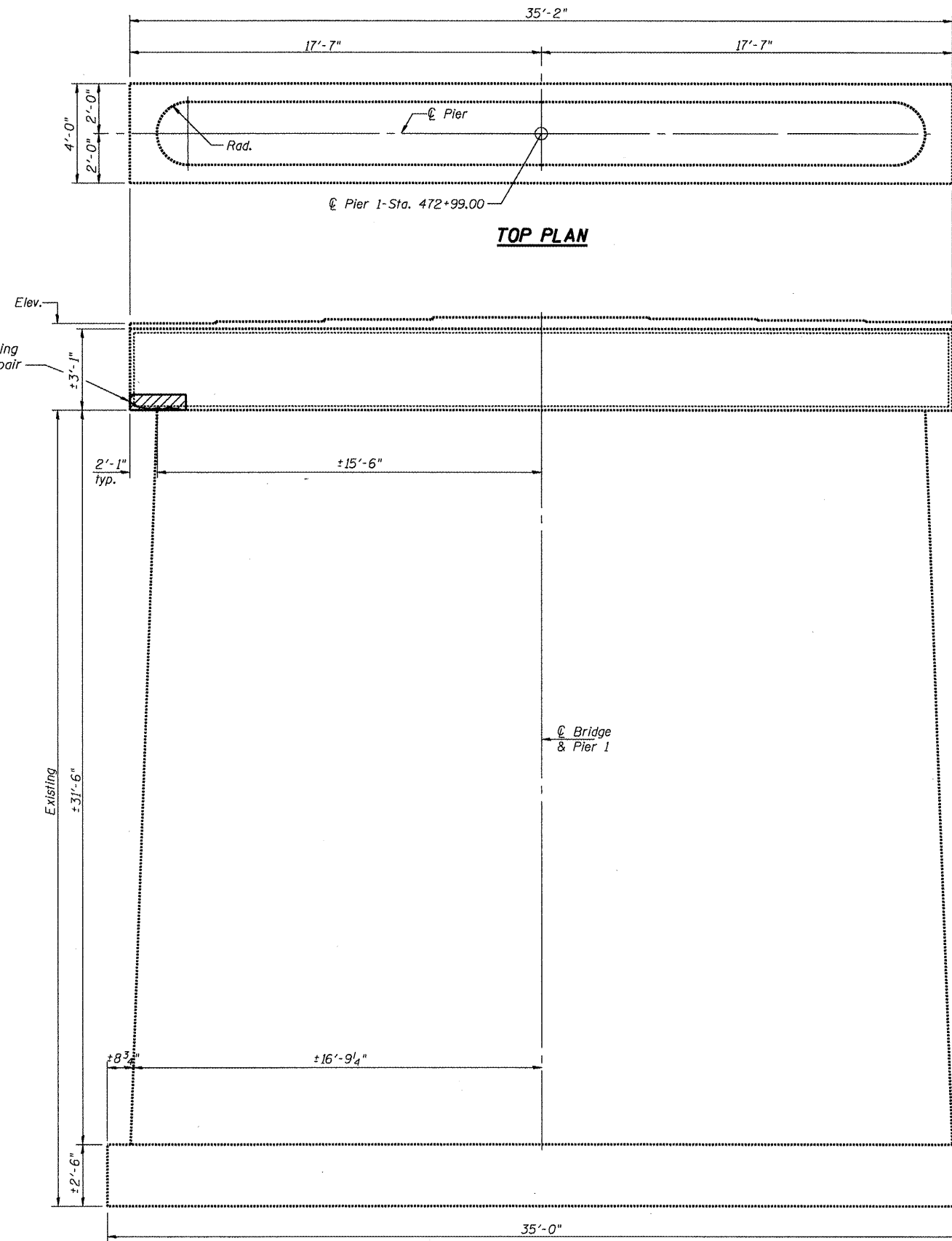
NOTE
Deck Slab Repair locations and quantities are estimated from an actual "deck sounding" practice. Total contract quantity is based on this result plus 15%. Field verification of patch locations is recommended to be done by the Engineer before saw cutting begins.

FILE NAME = #FILE#	USER NAME = #USER#	DESIGNED -	REVISED -	STATE OF ILLINOIS DEPARTMENT OF TRANSPORTATION	DECK PATCHING PLANS		F.A.P. RTE.	SECTION	COUNTY	TOTAL SHEETS	SHEET NO.
	PLOT SCALE = #SCALE#	CHECKED -	REVISED -		SN.029-0025 IL.95 OVER SPOON RIVER		687	(123B1)	FULTON	14	11
PLOT DATE = #DATE#	DATE -	REVISED -	REVISED -		SCALE: _____	SHEET NO. _____ OF _____ SHEETS	STA. _____ TO STA. _____	CONTRACT MAINT. BRIDGE REPAIRS		CONTRACT: 68A58	
							ILLINOIS FED. AID PROJECT				

S:\GEN. DRAFTY. STD&PLANS\ SQUAD14\ 68A58\ SN.029-0025.dgn



SECTION A-A



TOP PLAN

ELEVATION

(Looking East - Pier 1)

Structural Repair of Concrete

BILL OF MATERIAL

Item	Unit	Amount
Structural Repair of Concrete (<=5")	SQFT	12

(quantity reflects 15% above field survey)

SA GEN DRAFT ST08PLANS S04014 SBASBY SHL02P-0025.dgn

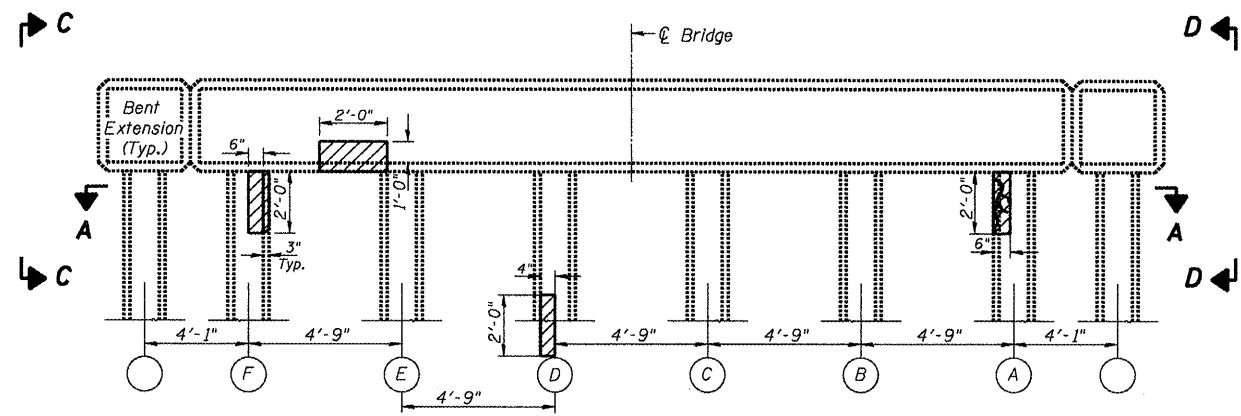
FILE NAME =	USER NAME = #USER#	DESIGNED - CEJ	REVISED -
#FILE#		DRAWN - CEJ	REVISED -
	PLOT SCALE = #SCALE#	CHECKED -	REVISED -
	PLOT DATE = #DATE#	DATE - 12/12/2012	REVISED -

**STATE OF ILLINOIS
DEPARTMENT OF TRANSPORTATION**

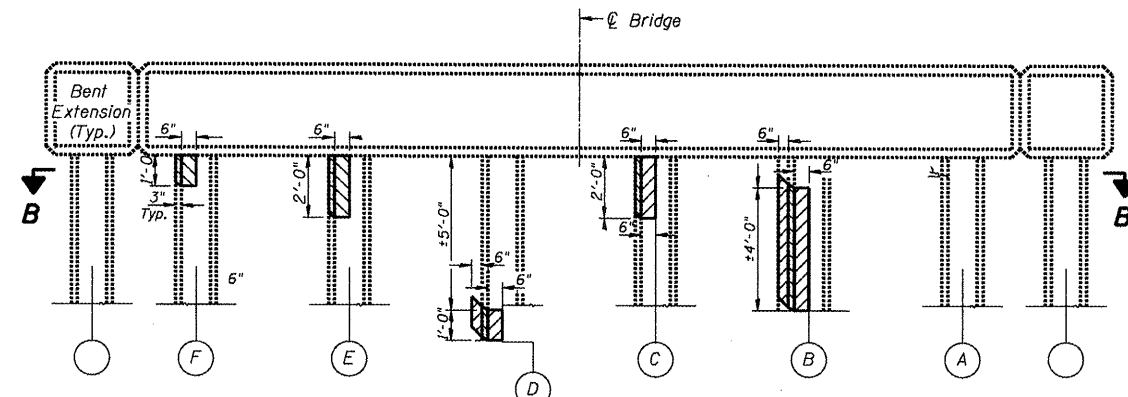
**CONCRETE REPAIR (PIERS 1&2)
SN.029-0025 IL.95 OVER SPOON RIVER**

SCALE: _____ SHEET NO. _____ OF _____ SHEETS STA. _____ TO STA. _____

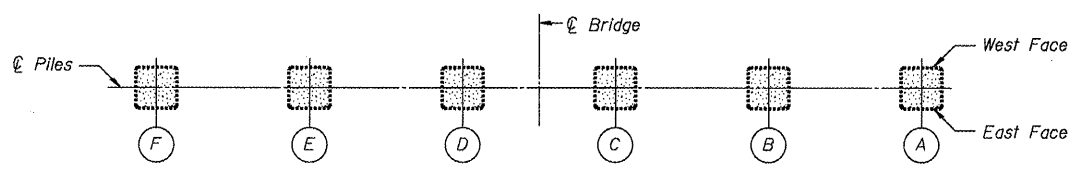
F.A.P. RTE. 687	SECTION (123B)1	COUNTY FULTON	TOTAL SHEETS 14	SHEET NO. 12
CONTRACT MAINT. BRIDGE REPAIRS			CONTRACT# 68A58	
ILLINOIS FED. AID PROJECT				



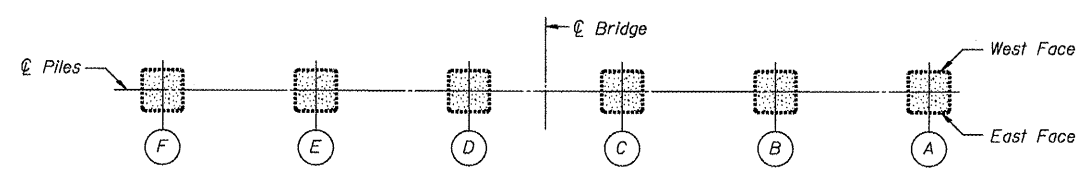
BENT #2 (East Face)
(See Detail A)



BENT #3 (East Face)
(See Detail A)

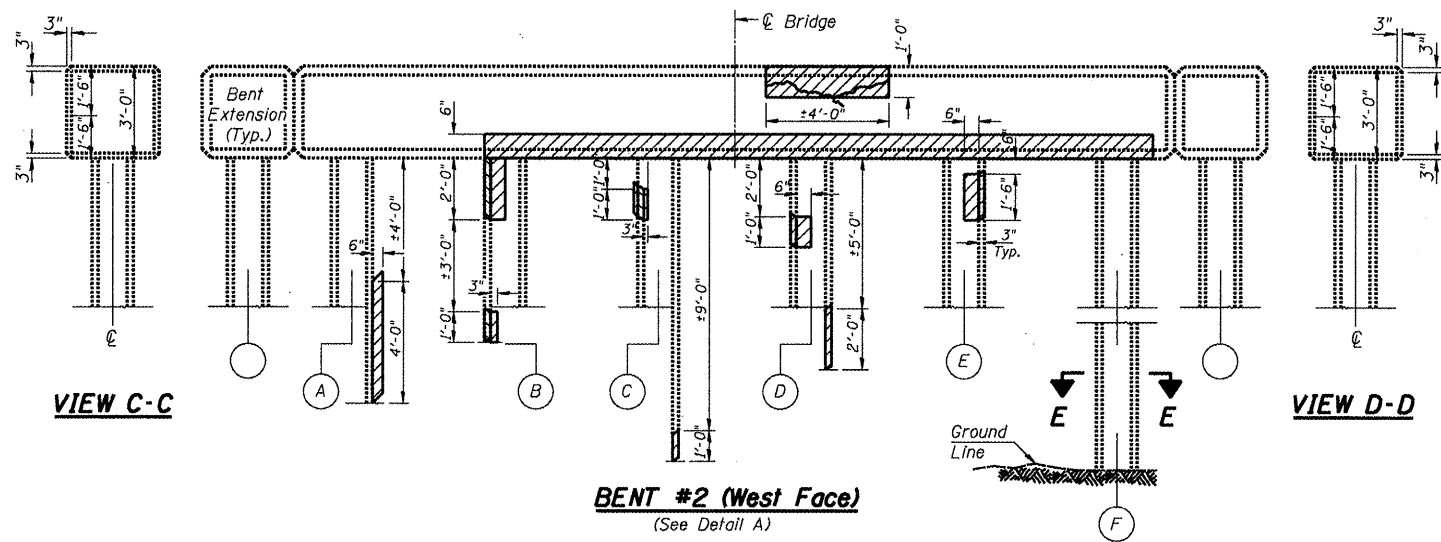


SECTION A-A

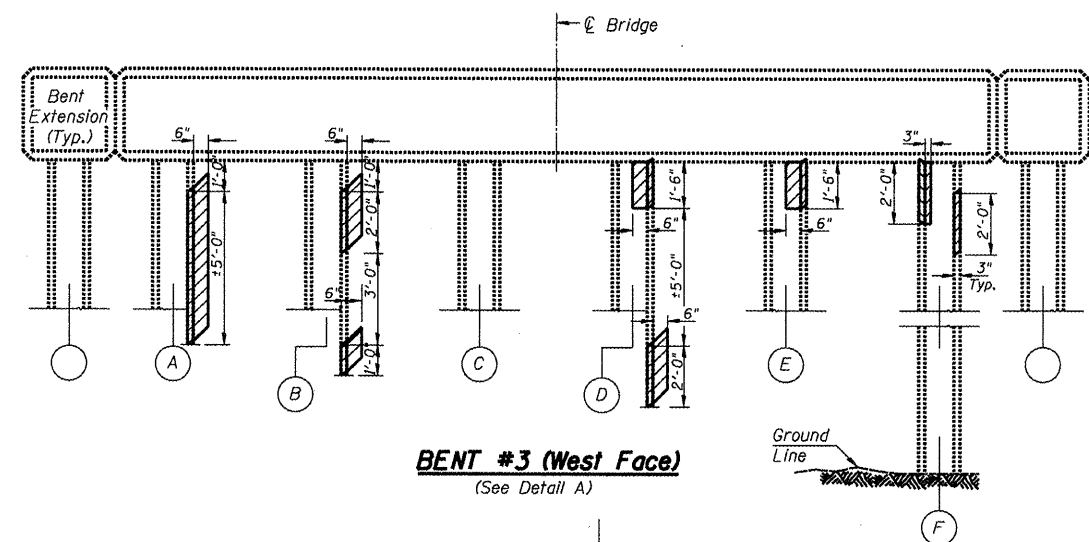


SECTION B-B

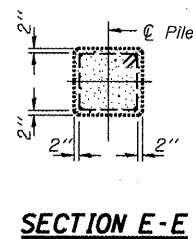
Metalizing Bridge Concrete Surface



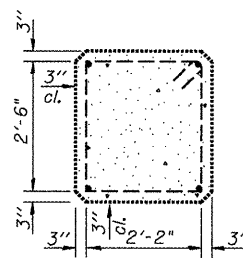
BENT #2 (West Face)
(See Detail A)



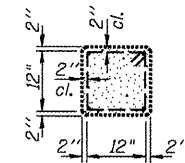
BENT #3 (West Face)
(See Detail A)



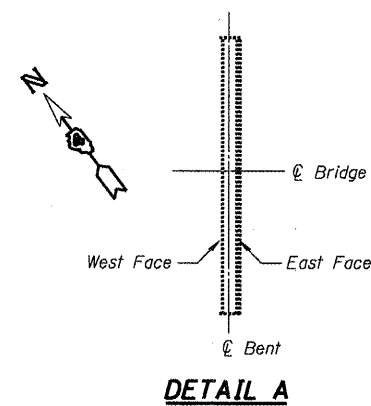
SECTION E-E



TYP. SECTION THRU. BENT



TYP. SECTION THRU. PILE



DETAIL A

BILL OF MATERIAL

Item	Unit	Total
Thermal Spraying (Metalizing) Bridge Concrete Surface	SQFT	183
Blast Cleaning Bridge Concrete Surface	SQFT	183

(quantities reflects 15% above field survey)

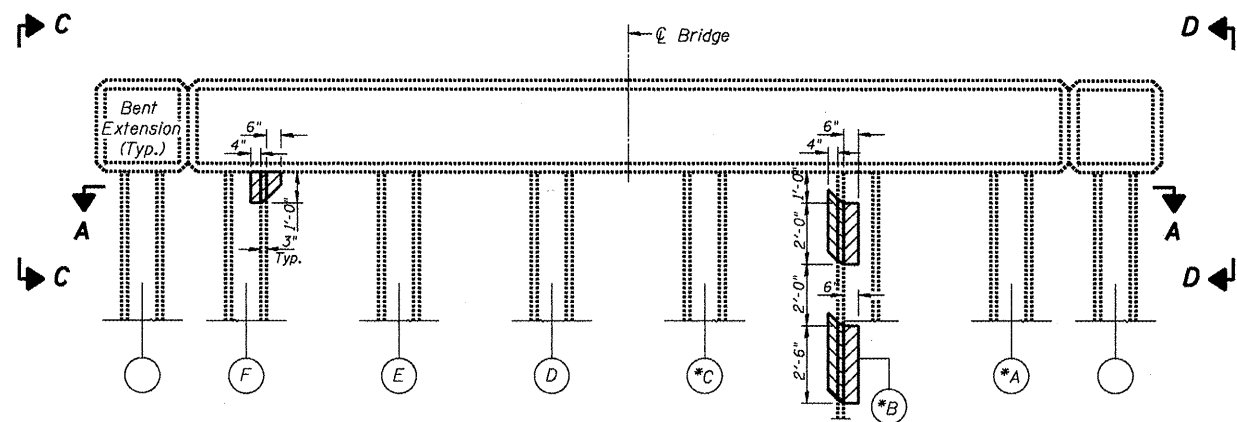
* Cost included with Thermal Spraying (Metalizing) See Special Provisions.

NOTES
Dimensions shown on plans for Thermal Spraying (Metalizing) Concrete Repair are for estimating purposes. Final limits and quantities for this repair are to be field verified by the Engineer.

FILE NAME =	USER NAME = #USER#	DESIGNED - CEJ	REVISED -	STATE OF ILLINOIS DEPARTMENT OF TRANSPORTATION	SUBSTRUCTURE REPAIRS (BENTS 2 & 3) SN.029-0025 IL.95 OVER SPOON RIVER	F.A.P. RTE.	SECTION	COUNTY	TOTAL SHEETS	SHEET NO.	
#FILE#		DRAWN - CEJ	REVISED -			687	(123B)	FULTON	14	13	
PLOT SCALE = #SCALE#		CHECKED -	REVISED -			CONTRACT MAINT. BRIDGE REPAIRS		CONTRACT# 68A58			
PLOT DATE = #DATE#		DATE - 11/22/2012	REVISED -			ILLINOIS FED. AID PROJECT					

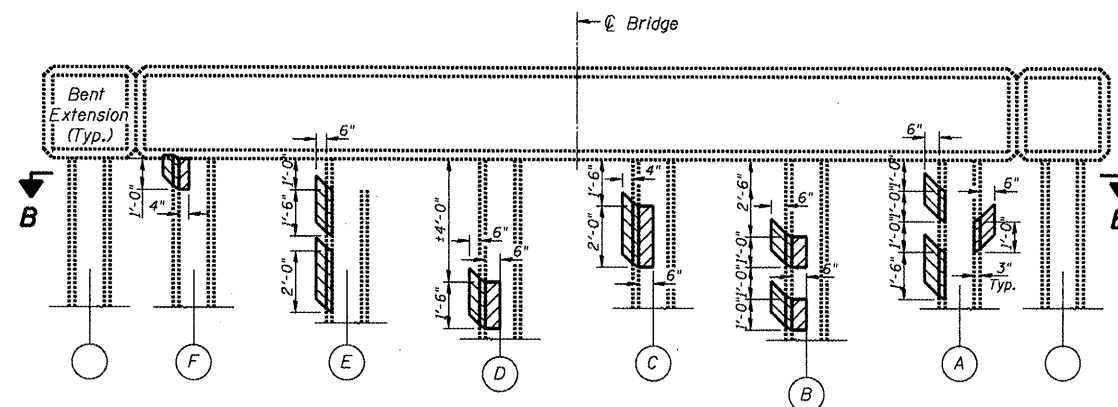
SCALE: _____ SHEET NO. _____ OF _____ SHEETS STA. _____ TO STA. _____

S:\GEN. DRWG. STDRPLNS. SPOONR1A. 68A58. SN.029-0025.dwg

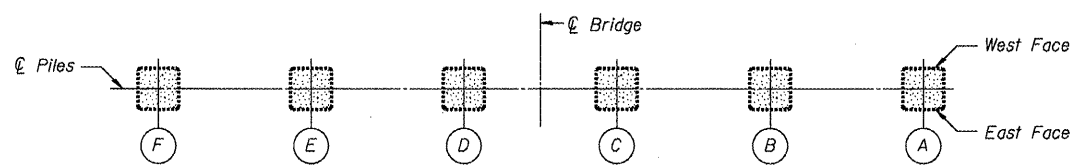


BENT #4 (East Face)
(See Detail A)

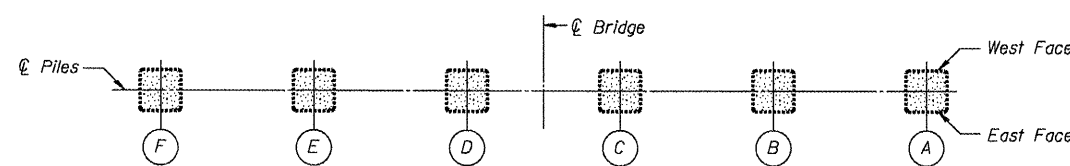
***NOTE**
Previous metalizing done to portions of bent piling as protective measure due to existing reinforcement corrosion.



BENT #5 (East Face)
(See Detail A)

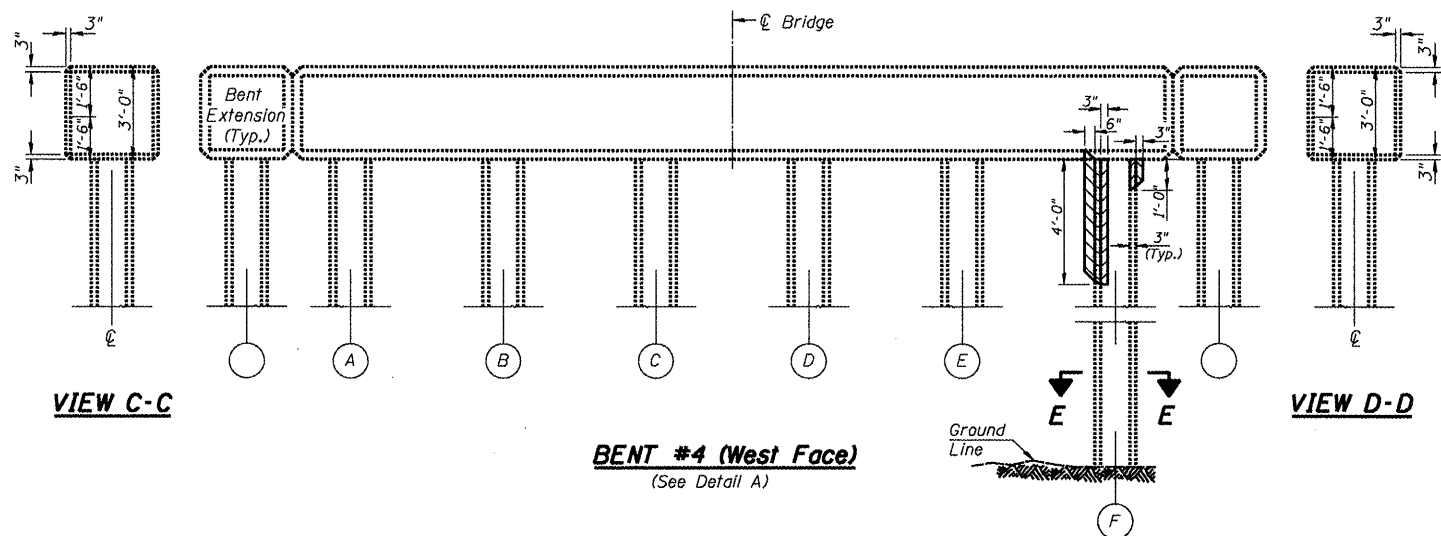


SECTION A-A

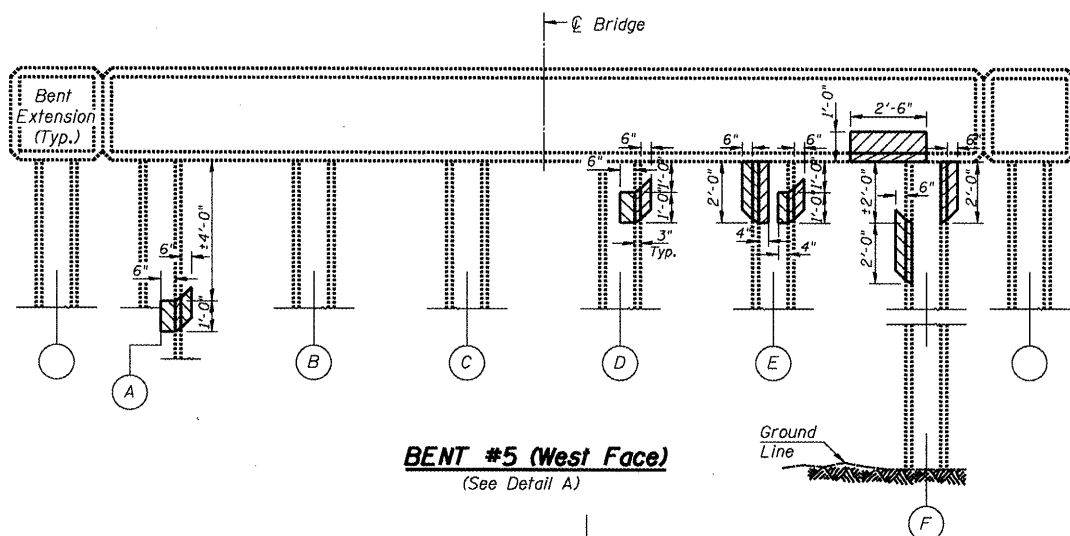


SECTION B-B

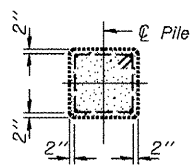
Metalizing Bridge Concrete Surface



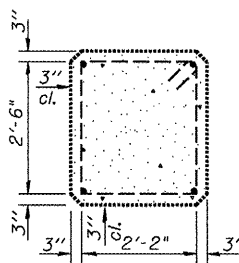
BENT #4 (West Face)
(See Detail A)



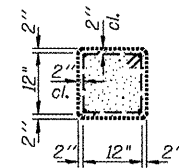
BENT #5 (West Face)
(See Detail A)



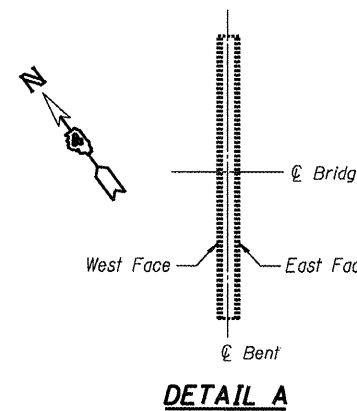
SECTION E-E



TYP. SECTION THRU. BENT



TYP. SECTION THRU. PILE



DETAIL A

BILL OF MATERIAL

Item	Unit	Total
Thermal Spraying (Metalizing) Bridge Concrete Surface	SOFT	87
Blast Cleaning Bridge Concrete Surface	SOFT	87

(quantity reflects 15% above field survey)

* Cost included with Thermal spraying (Metalizing) see special provisions.

NOTES
Dimensions shown on plans for Thermal Spraying (Metalizing) Concrete Repair are for estimating purposes. Final limits and quantities for this repair are to be field verified by the Engineer.

FILE NAME =	USER NAME = #USER#	DESIGNED - CEJ	REVISED -
#FILE#		DRAWN - CEJ	REVISED -
	PLOT SCALE = #SCALE#	CHECKED -	REVISED -
	PLOT DATE = #DATE#	DATE - 11/22/2012	REVISED -

STATE OF ILLINOIS
DEPARTMENT OF TRANSPORTATION

SUBSTRUCTURE REPAIRS (BENTS 4 & 5)			
SN.029-0025 IL.95 OVER SPOON RIVER			
SCALE:	SHEET NO. OF SHEETS	STA. TO STA.	

F.A.P. RTE. 687	SECTION (123B1)	COUNTY FULTON	TOTAL SHEETS 14	SHEET NO. 14
CONTRACT MAINT. BRIDGE REPAIRS			CONTRACT: 68A58	
ILLINOIS FED. AID PROJECT				

SA: GEN. DRAFT; STABLER, NEV. SQUADIA, BRABER, SN:025-0025.dgn