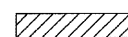


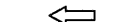
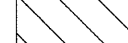
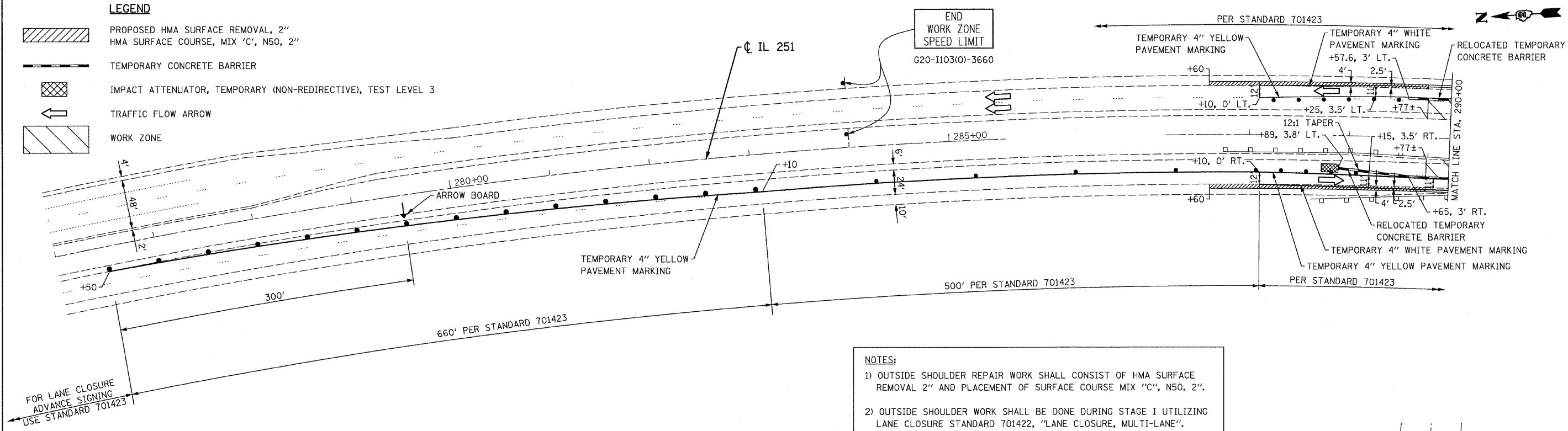


LEGEND

-  PROPOSED HMA SURFACE REMOVAL, 2"
HMA SURFACE COURSE, MIX 'C', N50, 2"
-  TEMPORARY CONCRETE BARRIER
-  IMPACT ATTENUATOR, TEMPORARY (NON-REDIRECTIVE), TEST LEVEL 3
-  TRAFFIC FLOW ARROW
-  WORK ZONE

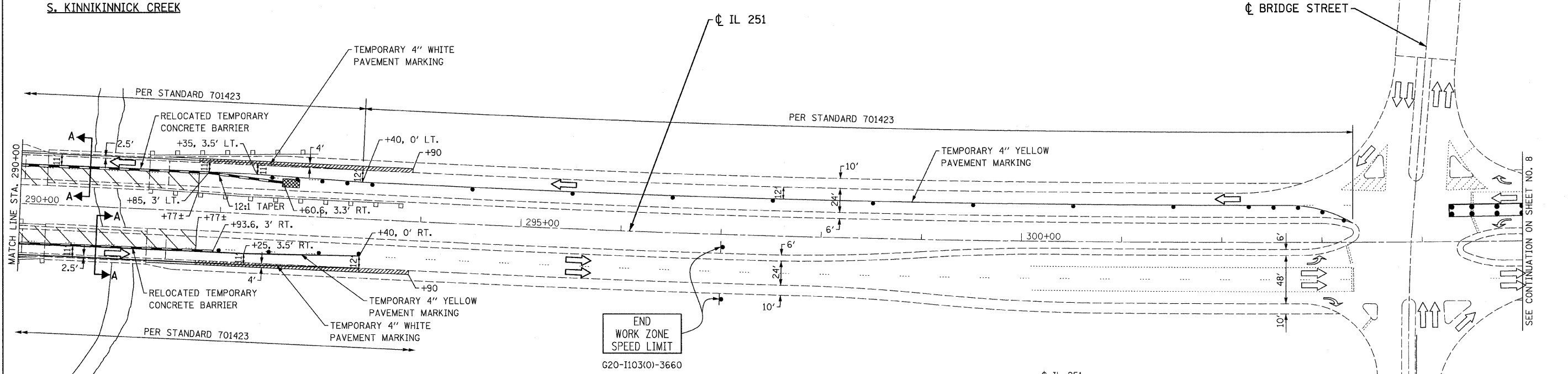
DATE	
BY	
NO.	
FINISHED	
DATE	
BY	
NO.	
REVISIONS	
NO.	
DATE	
BY	
NO.	



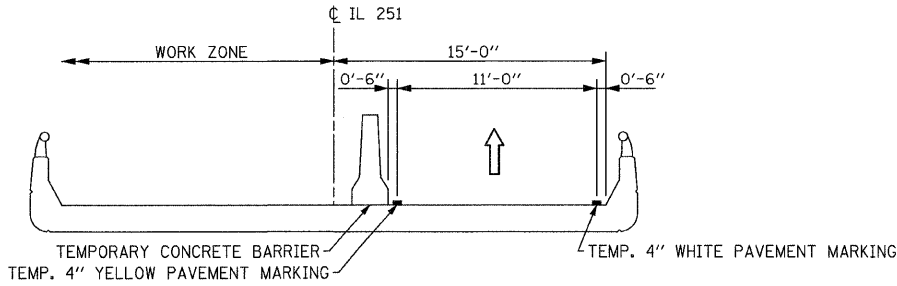
NOTES:


- 1) OUTSIDE SHOULDER REPAIR WORK SHALL CONSIST OF HMA SURFACE REMOVAL 2" AND PLACEMENT OF SURFACE COURSE MIX "C", N50, 2".
- 2) OUTSIDE SHOULDER WORK SHALL BE DONE DURING STAGE I UTILIZING LANE CLOSURE STANDARD 701422, "LANE CLOSURE, MULTI-LANE".

S. KINNIKINNICK CREEK



DATE	
BY	
NO.	
ORIGINAL	
DATE	
BY	
NO.	
REVISIONS	
NO.	
DATE	
BY	
NO.	



FILE NAME = D264H23-shr-Stage2-01.dgn	 CHRISTIAN-ROCHE & ASSOCIATES, INC. ENGINEERS-PLANNERS-SURVEYORS 211 WEST WACKER DRIVE CHICAGO, ILLINOIS 60606 PHONE: (312)372-2023 FAX: (312)372-5274	DESIGNED - E.M.	REVISED -	STATE OF ILLINOIS DEPARTMENT OF TRANSPORTATION	TRAFFIC CONTROL AND PROTECTION PLAN IL 251 AT SOUTH KINNIKINNICK BRIDGE STAGE II			F.A.P. R.T.E. 738	SECTION (5B-2)M	COUNTY WINNEBAGO	TOTAL SHEETS 22	SHEET NO. 7	
PLOT DATE = 1/24/2012		DRAWN - B.K.	REVISED -		SCALE:	SHEET NO.	OF SHEETS	STA.	TO STA.	ILLINOIS	CONTRACT NO. 64H23		
PLOT SCALE = 50.000000' / IN.		CHECKED - M.P.	REVISED -										
		DATE - DECEMBER 2011	REVISED -										

MOT 03