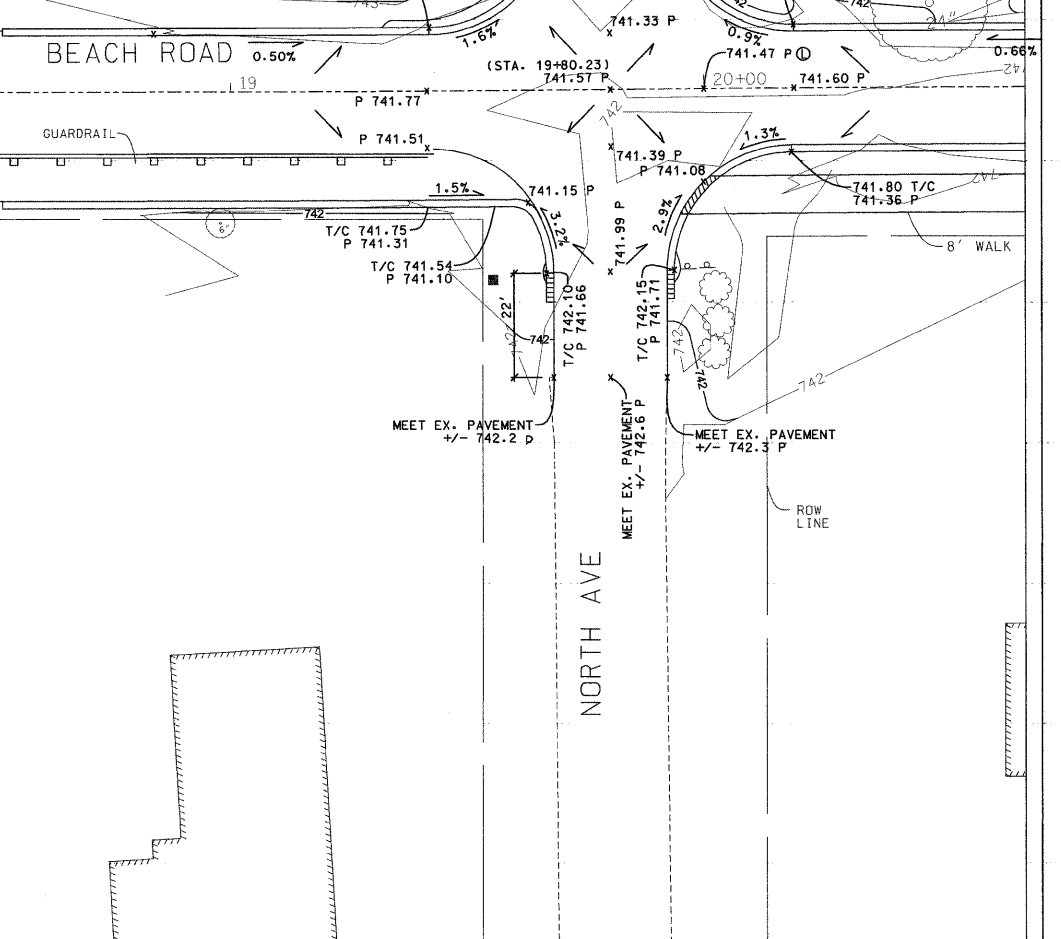
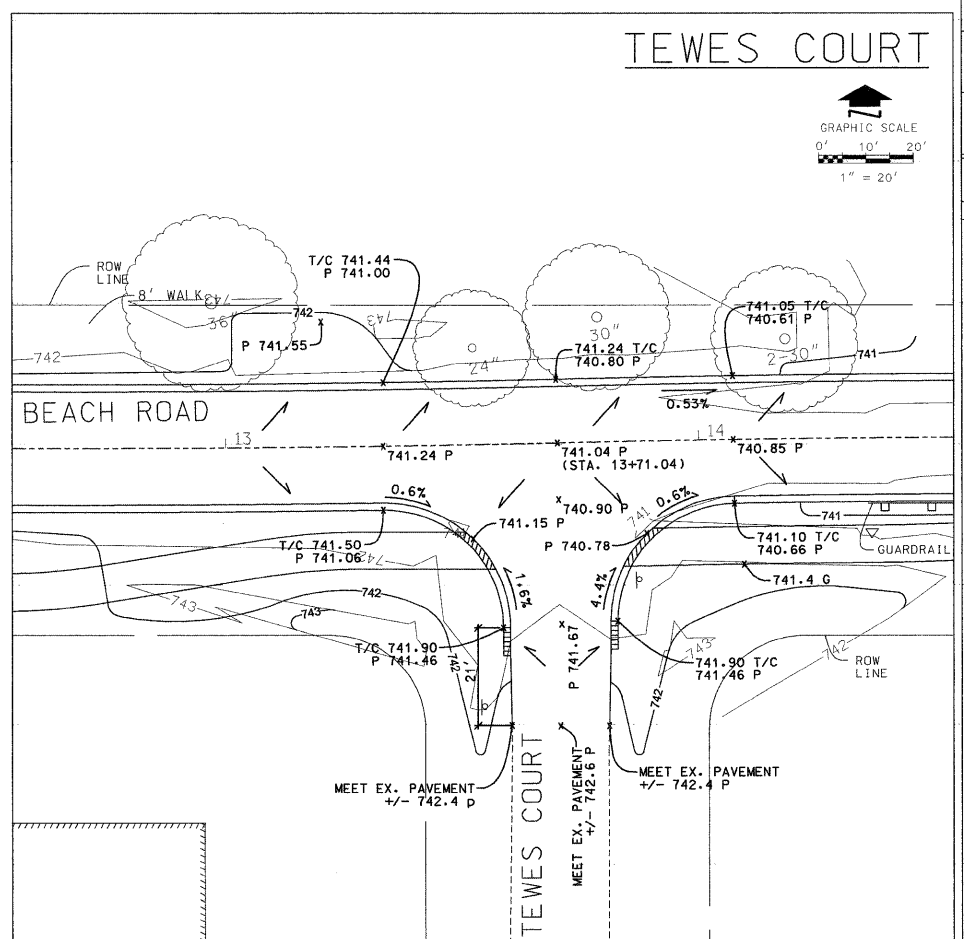
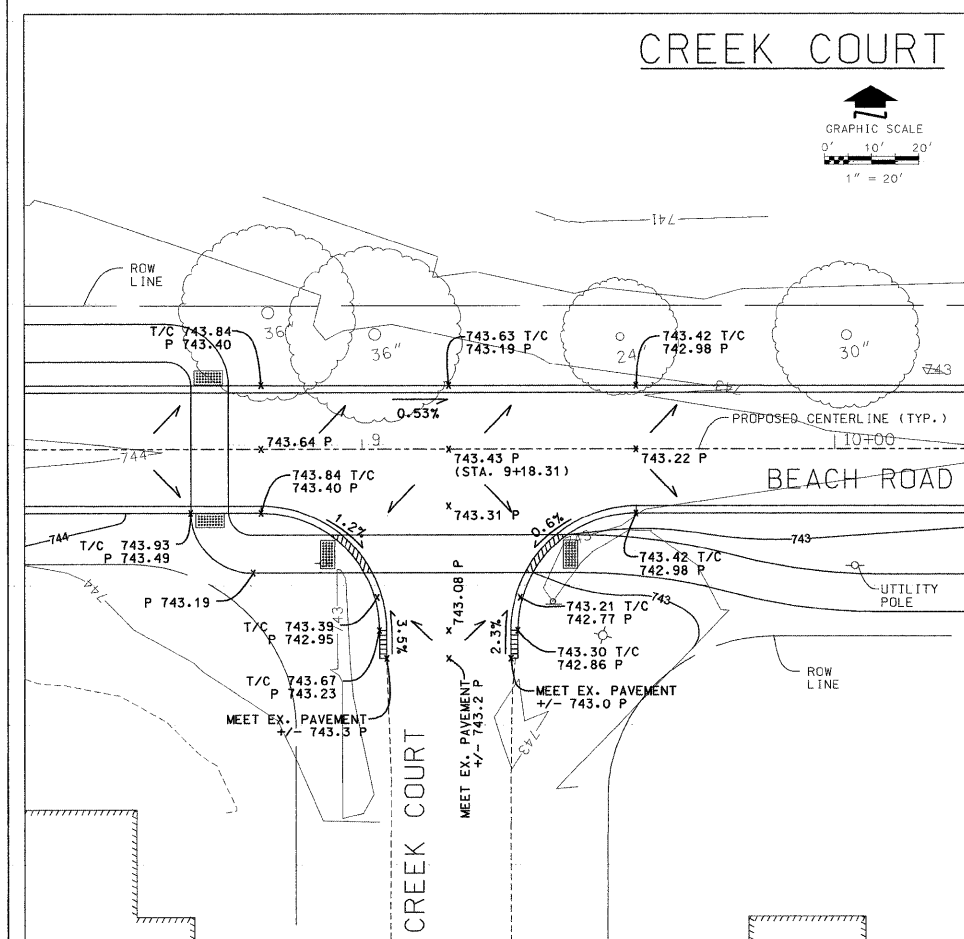
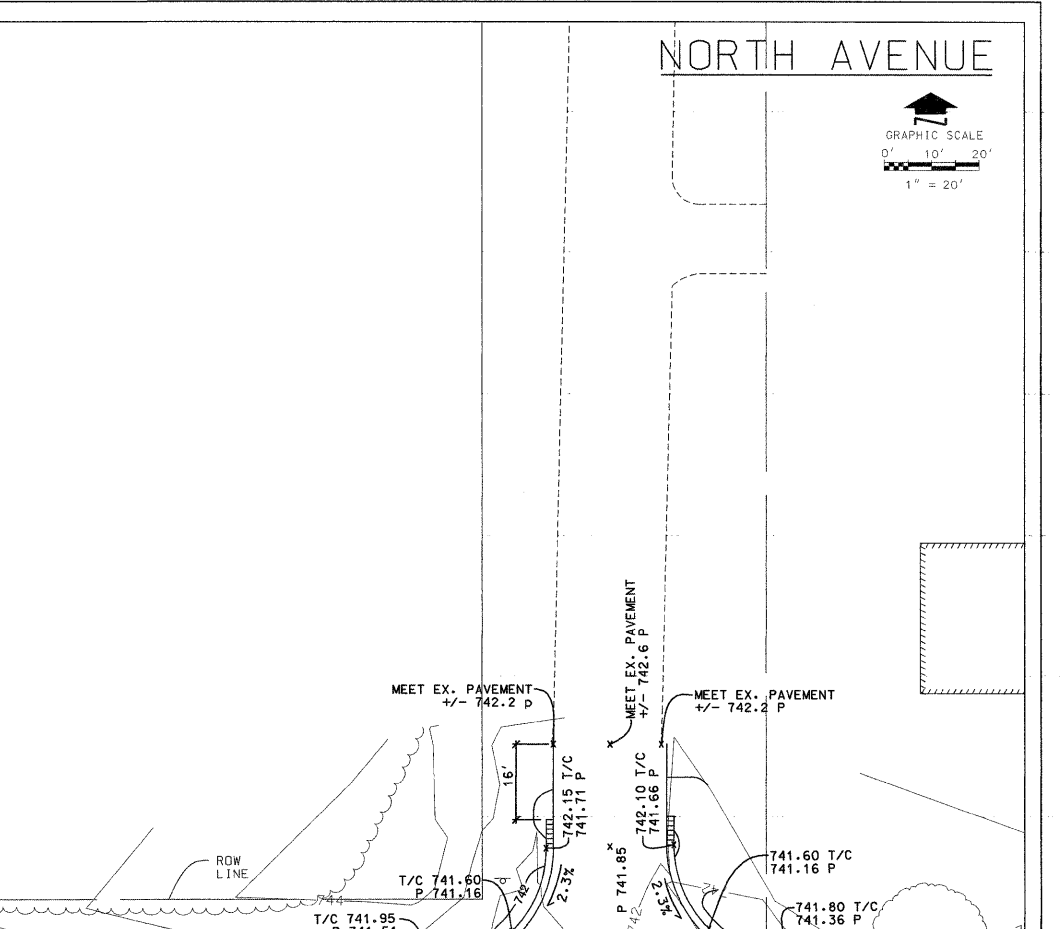
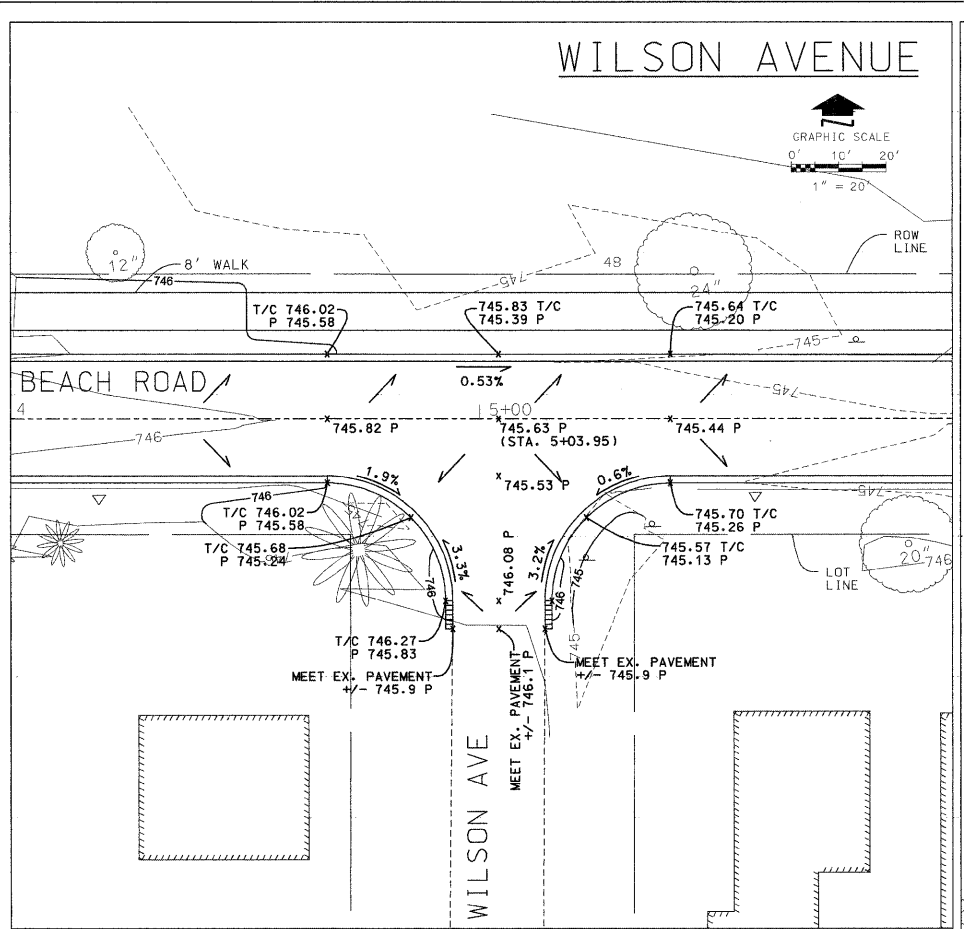
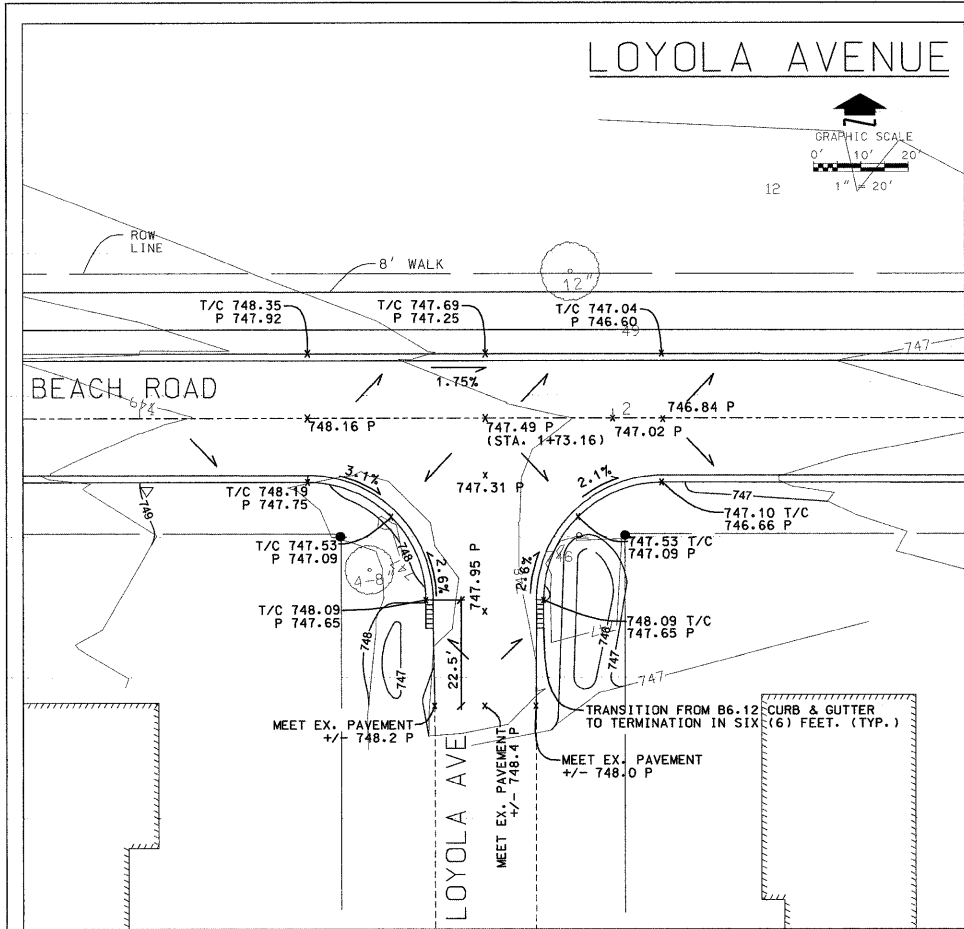


DATE	
BY	
PLAN	
SURVEYED	
ALIGNMENT CHECKED	
RT. OF WAY CHECKED	
PAV. FILE NAME	
NO.	

DATE	
BY	
PROFILE	
SURVEYED	
GRADES CHECKED	
PLAN. NOTED	
STRUCTURE NOTATIONS OK'D	
NO.	



DESIGNED	-	CMP
DRAWN	-	NAT
CHECKED	-	BWM
DATE	-	12/7/11

REVISED	-	2/6/12
REVISED	-	2/22/12
REVISED	-	
REVISED	-	

RHMG REZEK, HENRY, MEISENHEIMER, and GENDE, INC.
CONSULTING ENGINEERS
975 CAMPUS DRIVE
MUNDELEIN, ILLINOIS 60060
847-362-9999

638 TOLLWAY RD. SUITE F
ELGIN, ILLINOIS 60123
847-742-9999

VILLAGE OF BEACH PARK
BEACH ROAD
BEACH PARK, ILLINOIS

INTERSECTION DETAILS			
SCALE: 1" = 20'	SHEET NO. 23 OF 47	SHEETS STA.	TO STA.

F.A. RTE.	SECTION	COUNTY	TOTAL SHEETS	SHEET NO.
1210	11-00012-00-PV	LAKE	47	23
CONTRACT NO. 63683				
FED. ROAD DIST. NO. ILLINOIS FED. AID PROJECT				

RHMG JOB NO 21108030