

DATE	
BY	
SUPERVISED	CHECKED
PLANNED	NOTED
NOTE BOOK NO.	DATE FILED

DATE	
BY	
SUPERVISED	CHECKED
PLANNED	NOTED
NOTE BOOK NO.	DATE FILED

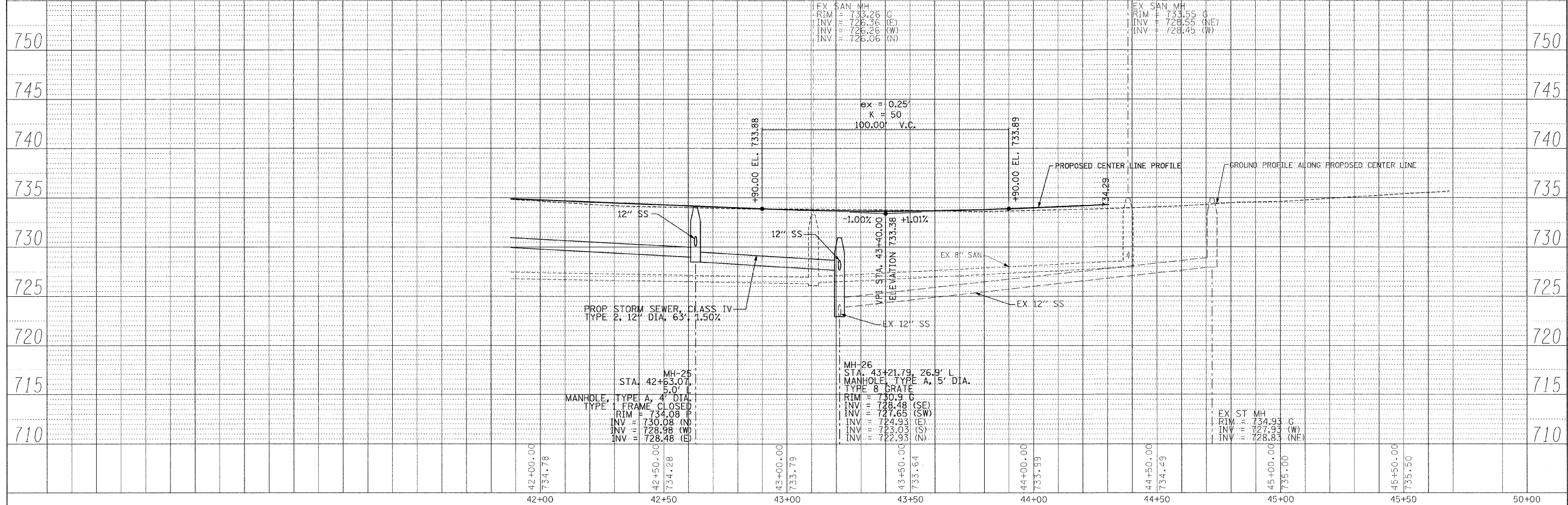
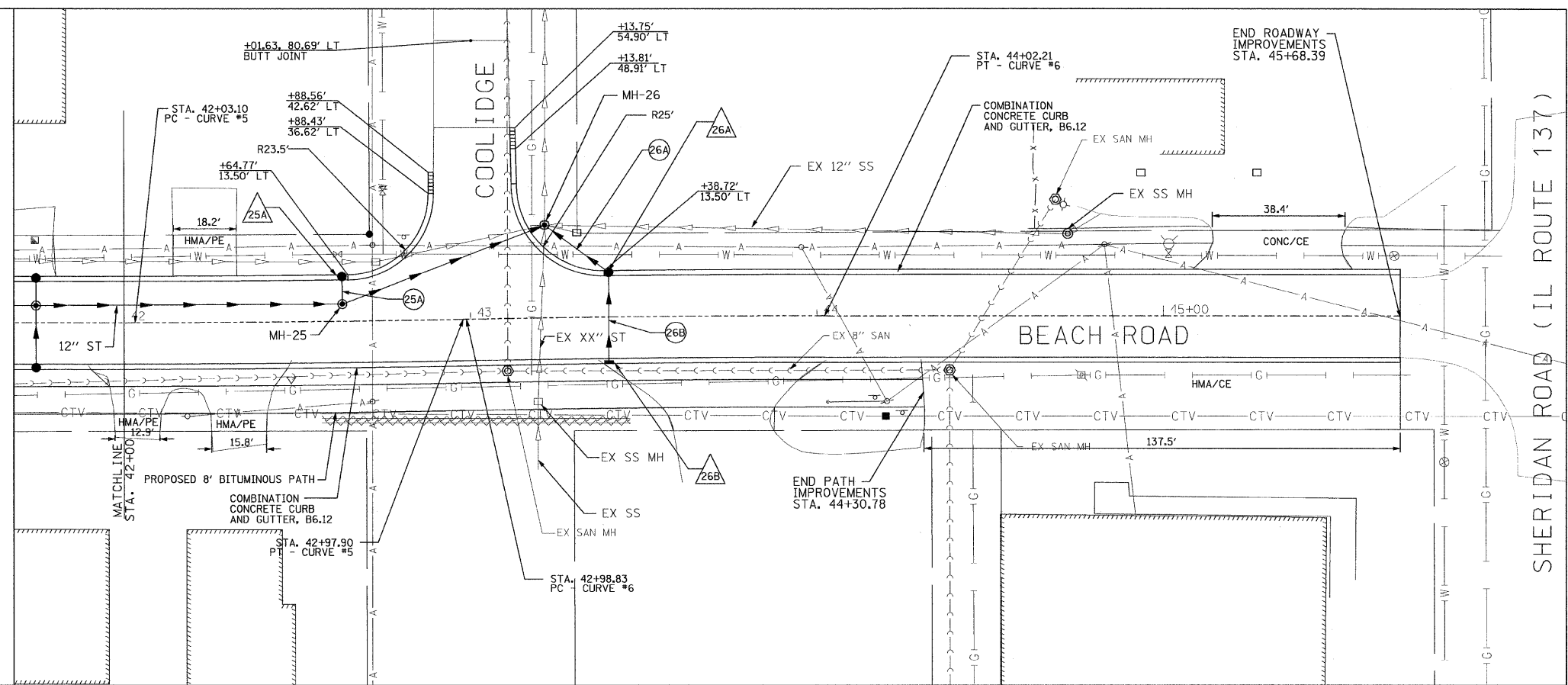
- 25A** STA. 42+63.07, 13.0' L  
CB, TYPE A, 2' DIA.  
TYPE 3 FRAME & GRATE  
RIM: 734.38 T/C  
INV: 730.14
- 26A** STA. 43+39.89, 13.0' L  
CB, TYPE A, 4' DIA.  
TYPE 3 FRAME & GRATE  
RIM: 732.97 T/C  
INV: 729.16 (S)  
INV: 727.74 (NW)
- 26B** STA. 43+39.89, 13.0' R  
INLET, TYPE A,  
TYPE 3 FRAME & GRATE  
RIM: 732.97 T/C  
INV: 729.28
- 25A** PROP STORM SEWER, CLASS IV  
TYPE 2, 12" DIA, 8', 0.45%
- 26A** PROP STORM SEWER, CLASS IV  
TYPE 2, 12" DIA, 20', 0.45%
- 26B** PROP STORM SEWER, CLASS IV  
TYPE 2, 12" DIA, 26', 0.45%

**CURVE #5**  
 RAD = 5150'  
 $\Delta = 1^{\circ}03'16.91''$   
 CH = 94.80'  
 L = 94.80'

**CURVE #6**  
 RAD = 5150'  
 $\Delta = 1^{\circ}09'0.55''$   
 CH = 103.38'  
 L = 103.38'

**LEGEND**

DETECTABLE WARNING



RHM JOB NO 21108030	DESIGNED - CMP	REVISED - 2/6/12	<b>RHM REZEK, HENRY, MEISENHEIMER, and GENDE, INC.</b> CONSULTING ENGINEERS 976 CAMPUS DRIVE MUNDELEIN, ILLINOIS 60090 847-352-9589	<b>VILLAGE OF BEACH PARK</b> <b>BEACH ROAD</b> <b>BEACH PARK, ILLINOIS</b>	<b>PLAN AND PROFILE</b> V: 1"=5' SCALE: H: 1"=20'		F.A. RTE.	SECTION	COUNTY	TOTAL SHEETS	SHEET NO.
	DRAWN - NAT	REVISED - 2/22/12			1210	11-00012-00-PV	LAKE	47	22		
	CHECKED - BWM	REVISED -			SHEETS STA. 42+00 TO STA. 45+68.39		CONTRACT NO. 63683				
	DATE - 12/7/11	REVISED -			FED. ROAD DIST. NO. ILLINOIS FED. AID PROJECT						