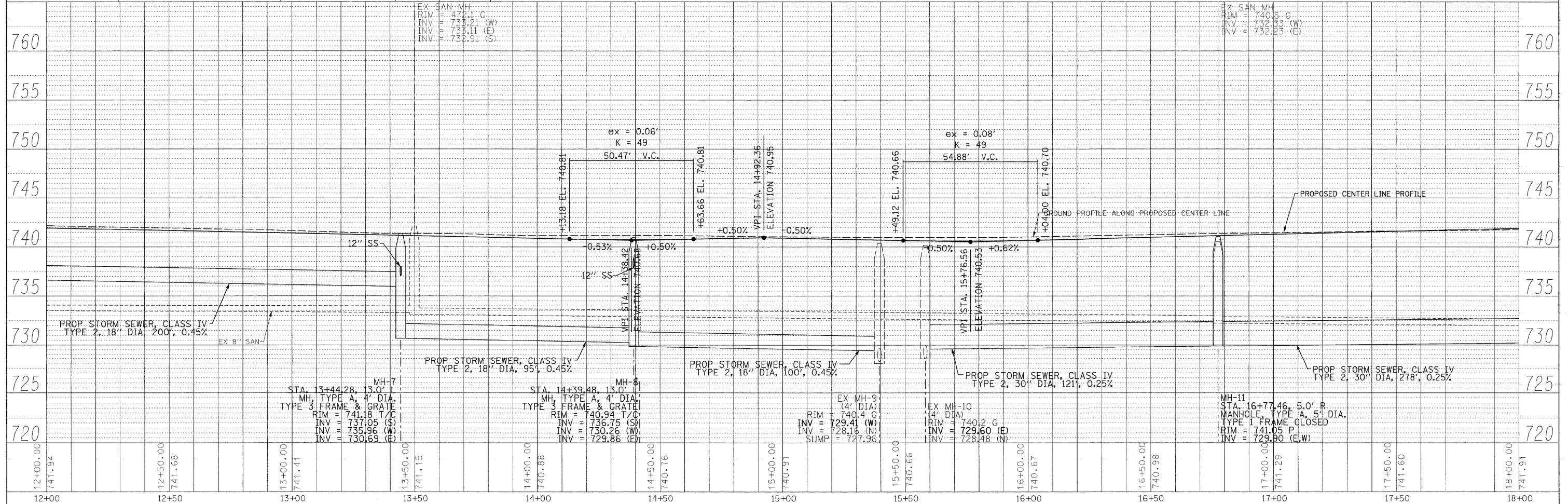
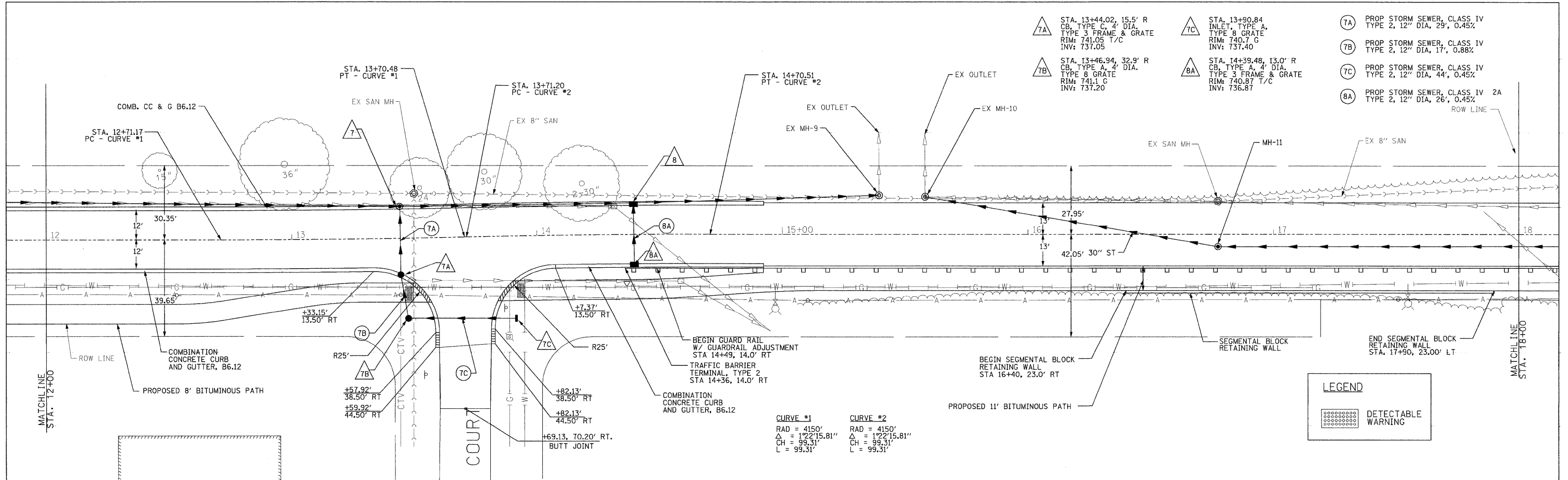


DATE	
BY	
APPROVED	
PLAN	
REVISIONS	
NO.	
DATE	
BY	
APPROVED	
PROFILE	
REVISIONS	
NO.	
DATE	
BY	
APPROVED	

DATE	
BY	
APPROVED	
PROFILE	
REVISIONS	
NO.	
DATE	
BY	
APPROVED	



RHM JOB NO 21108030 DESIGNED - CMP DRAWN - NAT CHECKED - BWM DATE - 12/7/11	REVISED - 2/6/12 REVISED - 2/22/12 REVISED - REVISED -	RHMG REZEK, HENRY, MEISENHEIMER, and GENDE, INC. CONSULTING ENGINEERS 976 CAMPUS DRIVE MUNDELEIN, ILLINOIS 60060 847-362-8889	535 TOLLWAY RD, SUITE F ELGIN, ILLINOIS 60123 847-742-5989	VILLAGE OF BEACH PARK BEACH ROAD BEACH PARK, ILLINOIS		PLAN AND PROFILE V: 1"=5' SCALE: H: 1"=20' SHEET NO. 17 OF 47 SHEETS STA. 12+00 TO STA. 18+00		F.A. R.T.E. 1210	SECTION 11-0002-00-PV	COUNTY LAKE	TOTAL SHEETS 47	SHEET NO. 17
				CONTRACT NO. 63683		FED. ROAD DIST. NO. ILLINOIS FED. AID PROJECT						