

F.A. RTE.	SECTION	COUNTY	TOTAL SHEETS	SHEET NO.
1210	11-00012-00-PV	LAKE	47	1
		ILLINOIS	CONTRACT NO. 63683	

STATE OF ILLINOIS
DEPARTMENT OF TRANSPORTATION
DIVISION OF HIGHWAYS

PLANS FOR PROPOSED FEDERAL AID HIGHWAY

F.A.U. ROUTE 1210 (BEACH ROAD)
FROM SHERIDAN ROAD (IL ROUTE 137) TO
EAST OF LEWIS AVE
ROADWAY RECONSTRUCTION
SECTION NO. 11-00012-00-PV
PROJECT NO. M-9003 (855)
LAKE COUNTY
JOB NO. C-91-020-12

INDEX OF SHEETS

1. COVER SHEET
2. LIST OF STANDARDS AND GENERAL NOTES
3. SUMMARY OF QUANTITIES
4. SCHEDULE OF QUANTITIES - EARTH WORK
5. ALIGNMENT, TIES, AND BENCHMARKS
6. TYPICAL SECTIONS
- 7-10. DEMOLITION PLAN
- 11-14. DETOUR AND MAINTENANCE OF TRAFFIC PLAN
- 15-22. PLAN AND PROFILE
- 23-24. INTERSECTION DRAWINGS
- 25-28. STORMWATER POLLUTION PREVENTION PLAN
- 29-32. PAVEMENT MARKING PLAN
- 33-34. CONSTRUCTION DETAILS
- 35-47. ROADWAY CROSS-SECTIONS

TRAFFIC DATA

FUNCTIONAL CLASSIFICATION: URBAN ARTERIAL
ADT: 3,900
POSTED SPEED LIMIT: 30 MPH
DESIGN SPEED LIMIT: 30 MPH



STATE OF ILLINOIS
DEPARTMENT OF TRANSPORTATION
DIVISION OF HIGHWAYS

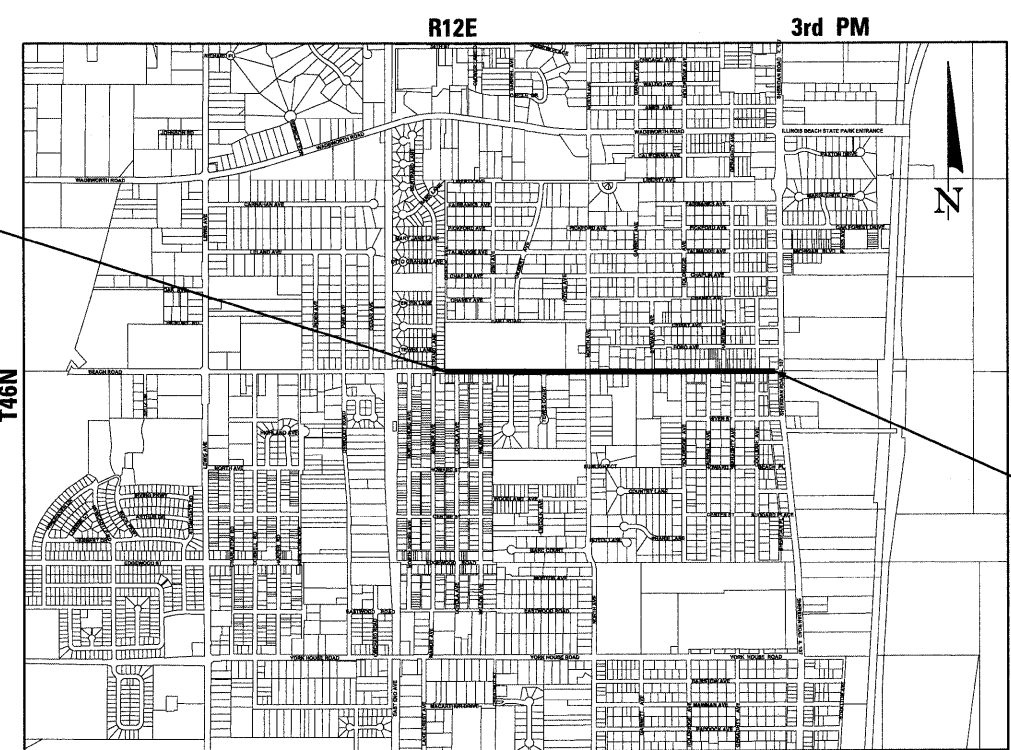
APPROVED 2-22 20 12
John Hahn Mayor Pro-Tem
VILLAGE OF BEACH PARK

PASSED FEBRUARY 23 2012
Charles M. Parrott
DISTRICT ENGINEER OF LOCAL ROADS & STREETS

RELEASING FOR BID
BASED ON LIMITED
REVIEW FEBRUARY 23, 2012
Diane M. O'Keefe
DEPUTY DIRECTOR OF HIGHWAYS, REGION 1 ENGINEER

**PRINTED BY THE AUTHORITY
OF THE STATE OF ILLINOIS**

BEGIN IMPROVEMENTS
STA. 0+00

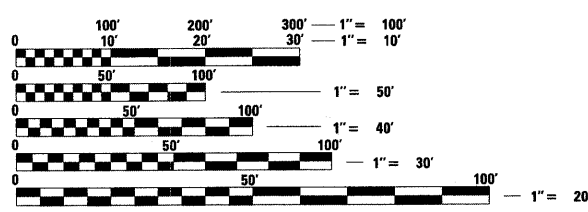


END IMPROVEMENTS
STA. 45+68.39



Charles M. Parrott
DATE: 2/22/12

CHARLES M. PARROTT, P.E.
LICENSED PROFESSIONAL ENGINEER IN ILLINOIS
LICENSE NO. 062-055398
EXPIRES NOVEMBER 30, 2013
RHM
0000



FULL SIZE PLANS HAVE BEEN PREPARED USING STANDARD
ENGINEERING SCALES. REDUCED SIZED PLANS WILL NOT
CONFORM TO STANDARD SCALES. IN MAKING MEASUREMENTS
ON REDUCED PLANS, THE ABOVE SCALES MAY BE USED.

J.U.L.I.E.
JOINT UTILITY LOCATION INFORMATION FOR EXCAVATION
1-800-892-0123
OR 811

LOCATION MAP
N.T.S.
BENTON TOWNSHIP
LENGTH OF IMPROVEMENTS
GROSS & NET LENGTH = 4,568.39 FEET = 0.865 MILE

CONTRACT NO. 63683

PROGRAM AND OFFICE ENGINEER: CHARLES F. RIDDLE, P.E., 847-705-4406 SCHALMUR, IL