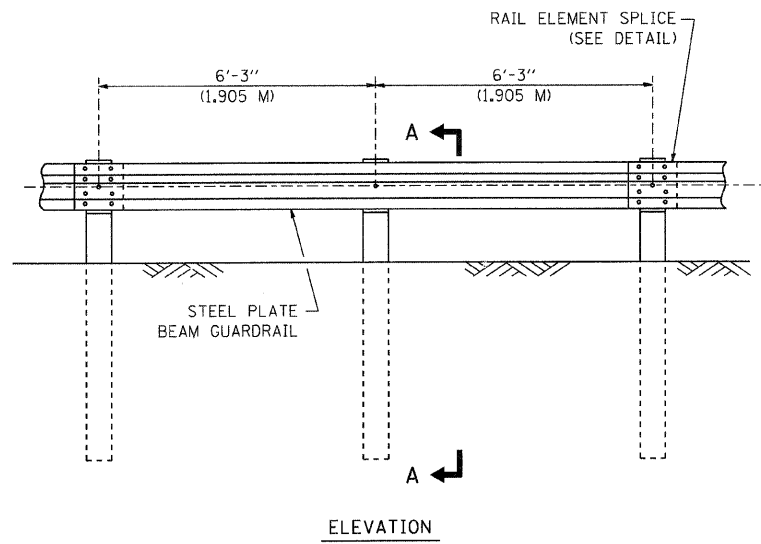
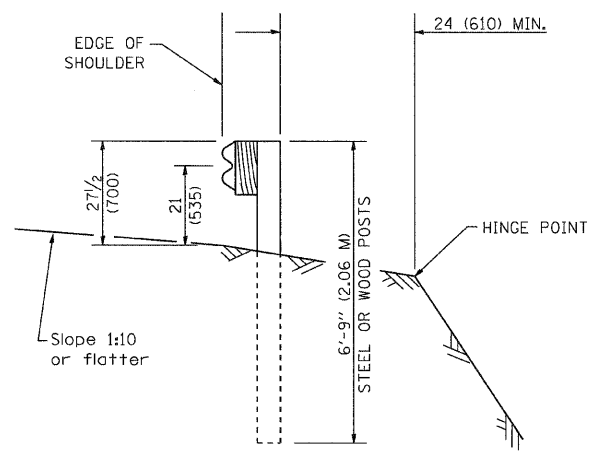


F.A.P. RTE.	SECTION	COUNTY	TOTAL SHEETS	SHEET NO.
336	112R-N	McHENRY	266	189
STA.		TO STA.		
FED. ROAD DIST. NO.		ILLINOIS FED. AID PROJECT		
CONTRACT NO. 62537				

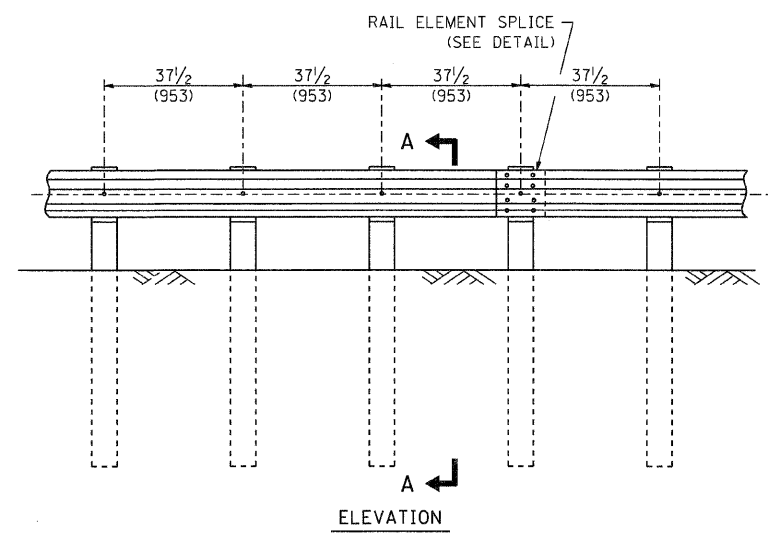


**TYPE A**

6'-3" (1.905 M) TYPICAL POST SPACING

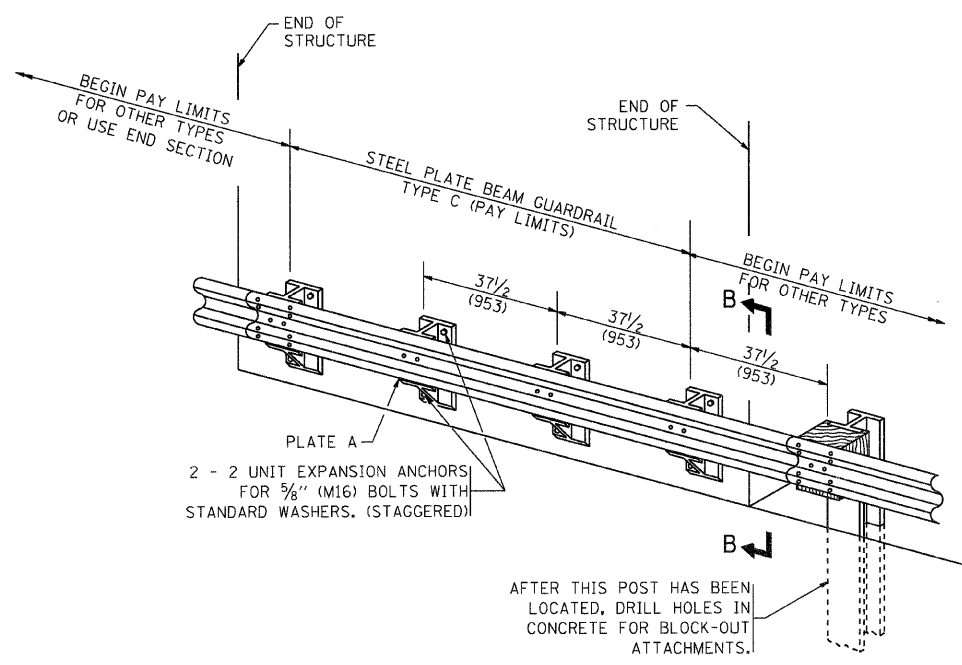


**SECTION A-A**



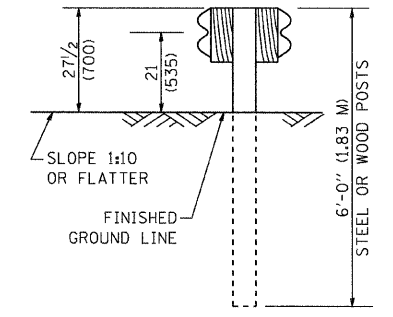
**TYPE A**

37 1/2 (953) CLOSED POST SPACING

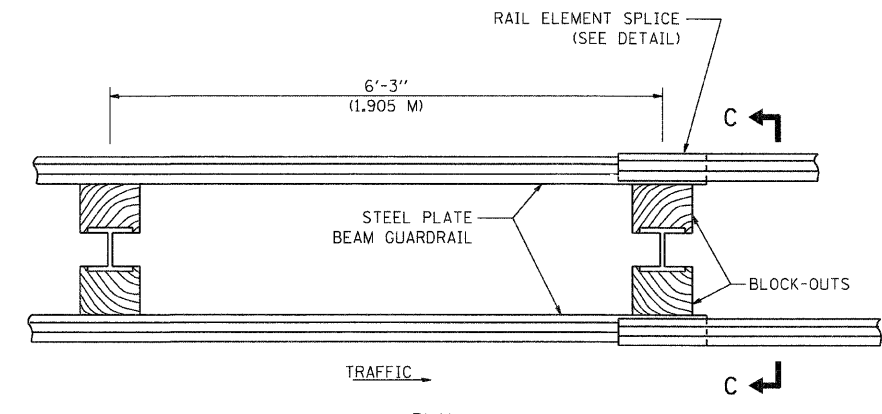


**TYPE C**

37 1/2 (953) BLOCK-OUT SPACING

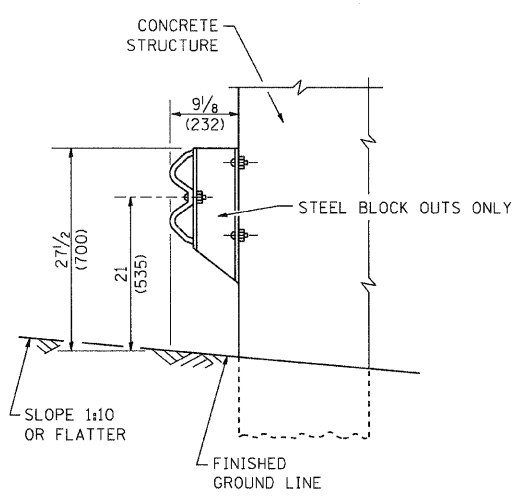


**SECTION C-C**



**TYPE D**

DOUBLE STEEL PLATE BEAM GUARDRAIL  
6'-3" (1.905 M) TYPICAL POST SPACING



**SECTION B-B**

**GENERAL NOTES**

ALL SLOPE RATIOS ARE EXPRESSED AS UNITS OF VERTICAL DISPLACEMENT TO UNITS OF HORIZONTAL DISPLACEMENT (V:H).

ALL DIMENSIONS ARE IN INCHES (MILLIMETERS) UNLESS OTHERWISE SHOWN.

THE EXISTING STEEL POSTS MAY BE DRILLED TO MATCH THE BOLT PATTERN SHOWN HEREIN FOR THE WOOD BLOCK-OUT, OR A NEW STEEL POST SHALL BE PROVIDED.

THIS DETAIL IS APPLICABLE TO THE GUARDRAIL SYSTEM USED PRIOR TO JANUARY 1, 2007. FOR DETAILS ON THE MIDWEST GUARDRAIL SYSTEM, SEE STANDARD 630001.

REVISIONS	
NAME	DATE

ILLINOIS DEPARTMENT OF TRANSPORTATION

**REMOVE AND REERECT  
STEEL PLATE BEAM GUARDRAIL  
(SHEET 1 OF 4)**

SCALE: NONE  
DATE: 2/27/2007

DRAWN BY  
CHECKED BY

PLOT DATE = 2/27/2007  
FILE NAME = K:\distrad\bm21.dgn  
USER NAME = 504666 / IN