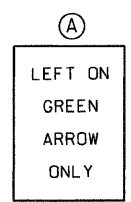
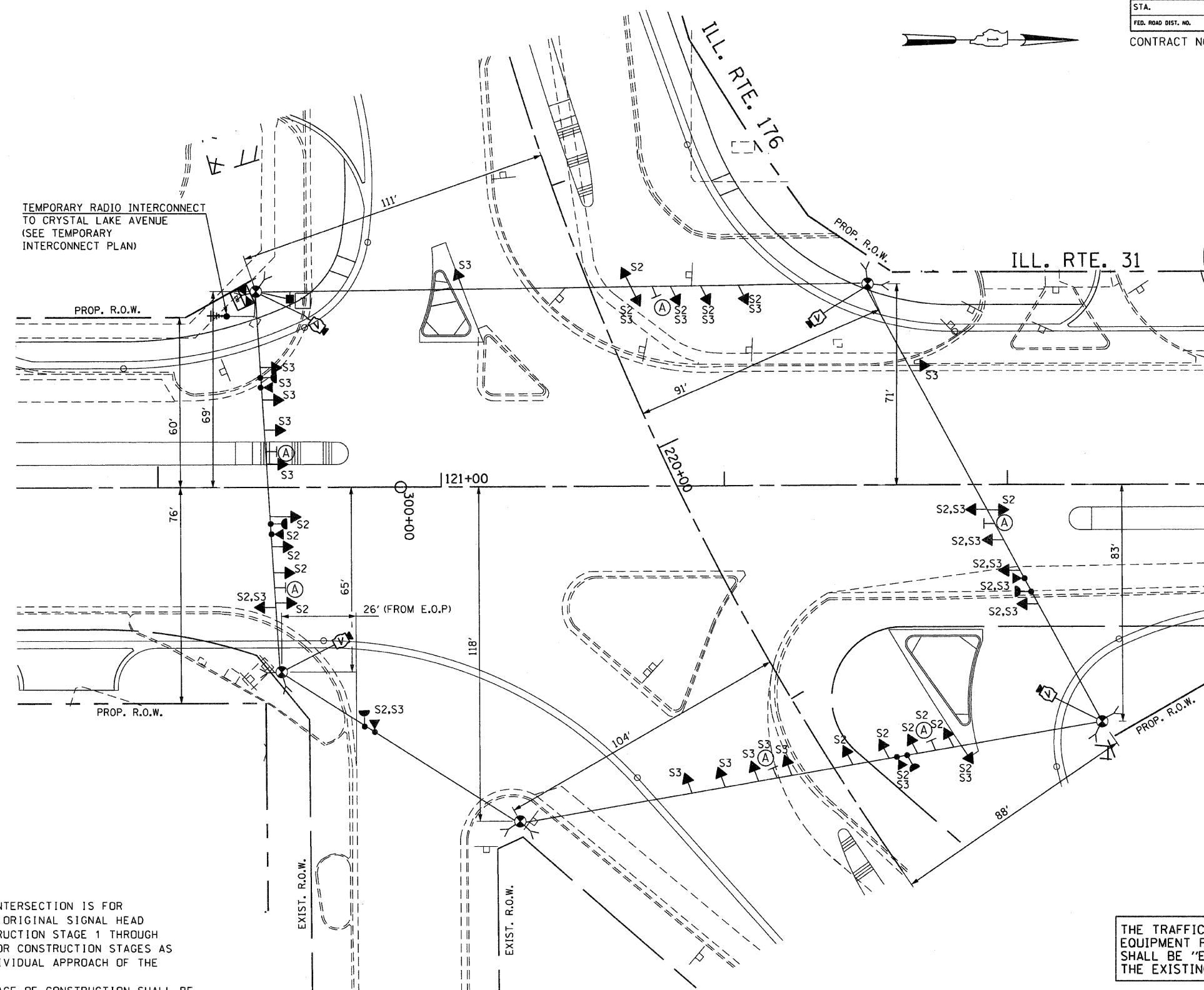


F.A.P. RTE.	SECTION	COUNTY	TOTAL SHEETS	SHEET NO.
336	112R-N	McHENRY	266	167
STA.		TO STA.		
FED. ROAD DIST. NO.		ILLINOIS	FED. AID PROJECT	

CONTRACT NO. - 62537



R10-5 (24" X 30")  
ONLY FOR STAGE 2 & STAGE 3

**CONSTRUCTION NOTES**

- 1: THE ORIGINAL SIGNAL HEAD PLACEMENT FOR ALL APPROACHES OF THE INTERSECTION IS FOR PRE-CONSTRUCTION STAGE (P). ADDITIONAL CONSTRUCTION STAGES, WHERE ORIGINAL SIGNAL HEAD PLACEMENT IS UTILIZED, ARE SHOWN WITH S1 THROUGH S3 FOR CONSTRUCTION STAGE 1 THROUGH CONSTRUCTION STAGE 3. THE SECONDARY SIGNAL HEAD PLACEMENT IS FOR CONSTRUCTION STAGES AS MARKED, NEXT TO THE SIGNAL HEAD, FOR APPLICABLE STAGES FOR INDIVIDUAL APPROACH OF THE INTERSECTION.
- 2: ANY TEMPORARY TRAFFIC SIGNAL SECTIONS NOT IN USE DURING ANY STAGE OF CONSTRUCTION SHALL BE BAGGED AND DEACTIVATED.
- 3: ALL VIDEO DETECTION ZONES ARE TO BE REDEFINED DURING EACH STAGE OF CONSTRUCTION AND ARE INCIDENTAL TO THE COST OF THE TEMPORARY TRAFFIC SIGNAL INSTALLATION.

THE TRAFFIC SIGNAL CONTROL EQUIPMENT FOR THIS PROJECT SHALL BE "ECONOLITE" TO MATCH THE EXISTING ADJACENT SYSTEM.

**TEMPORARY TRAFFIC SIGNAL INSTALLATION  
STAGES: STAGE 2 AND STAGE 3**

REVISIONS	
NAME	DATE
EA	11/21/2011

**GO** GANDHI AND ASSOCIATES, INC.  
ENGINEERS AND PLANNERS  
6035 N. NORTHWEST HIGHWAY  
SUITE 306  
CHICAGO, ILLINOIS 60631 TEL. (773) 774-5910

ILLINOIS DEPARTMENT OF TRANSPORTATION  
**TEMPORARY TRAFFIC SIGNAL  
INSTALLATION AND REMOVAL PLAN  
ILLINOIS ROUTE 31 AT ILLINOIS  
ROUTE 176 (SHEET 3 OF 5)**

SCALE: 1"=20'  
DATE: 02/10/2012  
DRAWN BY: KGP  
DESIGNED BY: PKG  
CHECKED BY: PKG