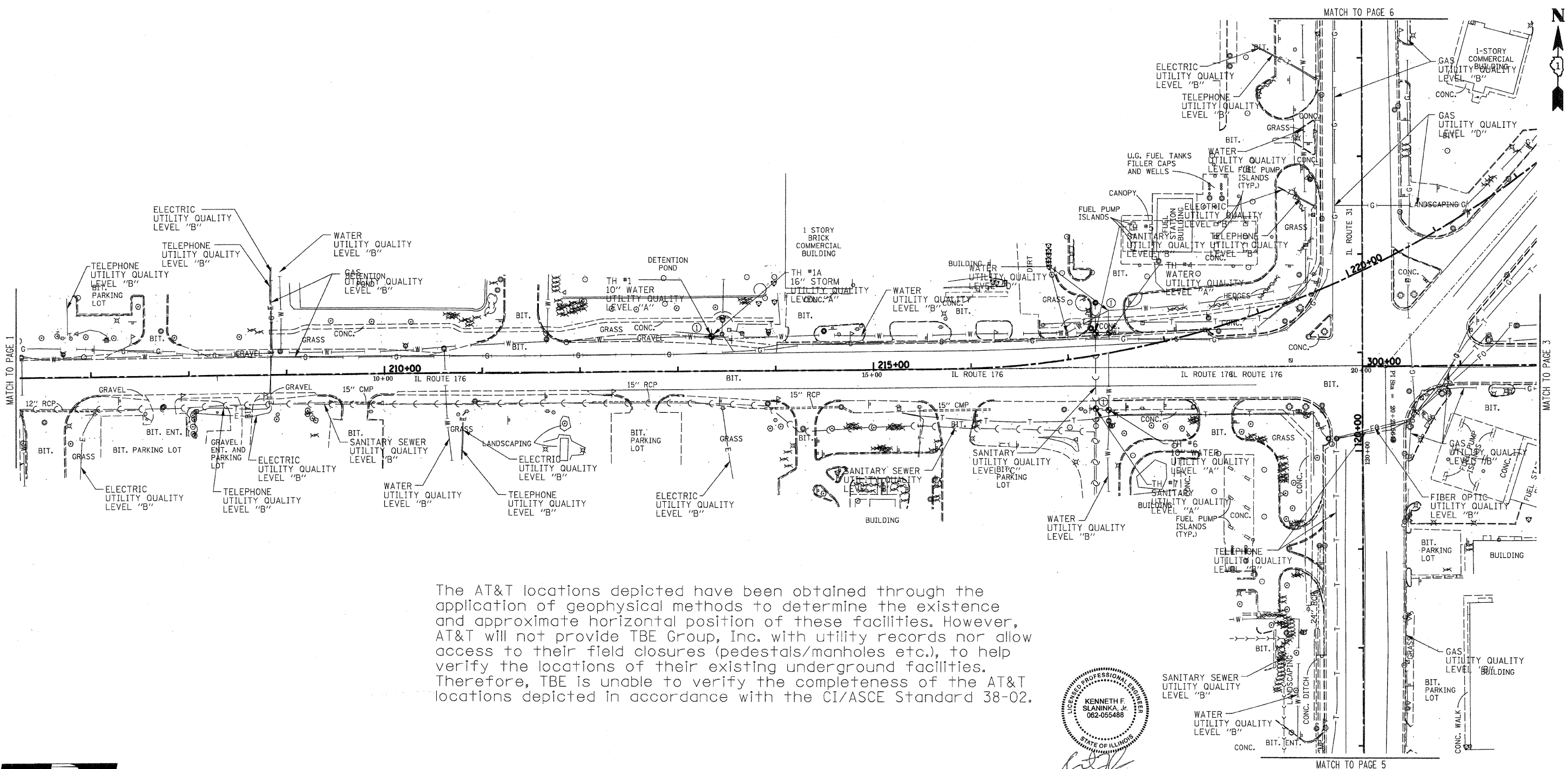


F.A. RTE.	SECTION	COUNTY	TOTAL SHEETS	SHEET NO.
	112-R-N	McHenry	266	100
STA.		TO STA.		
FED. ROAD DIST. NO.		ILLINOIS FED. AID PROJECT		



The AT&T locations depicted have been obtained through the application of geophysical methods to determine the existence and approximate horizontal position of these facilities. However, AT&T will not provide TBE Group, Inc. with utility records nor allow access to their field closures (pedestals/manholes etc.), to help verify the locations of their existing underground facilities. Therefore, TBE is unable to verify the completeness of the AT&T locations depicted in accordance with the CI/ASCE Standard 38-02.

KENNETH F. SLANINKA, Jr.
 LICENSED PROFESSIONAL ENGINEER
 062-055488
 STATE OF ILLINOIS
 11/27/12
 license expires 11-30-13

TBE GROUP, INC.
 CIVIL ENGINEERING * TRANSPORTATION * ENVIRONMENTAL
 * PLANNING * UTILITY ENGINEERING/LOCATING
 IL09500234, 269, 283, IL09510471
 TBE SUE PAGE NO: 2 of 9
 Checked by: _____

Utility Quality Level "A" : Visually Verified Test Hole
 Utility Quality Level "B" : Designating / Non Visually Verified Test Hole
 Utility Quality Level "C" : Records Research with Survey
 Utility Quality Level "D" : Records Research

— — — — —	SANITARY SEWER
— — — — —	UNKNOWN
—CTV—CTV—	CABLE TV
—T—T—	TELEPHONE
—W—W—	WATER
—G—G—	GAS
—FO—FO—	FIBER OPTIC
—E—E—	ELECTRIC
⊕	TEST HOLE

Utilities shown in color on these plans as depicted in the legend have been investigated by TBE Group, Inc in accordance with SUE Industry Standards. All other information shown has been provided to TBE Group, Inc by others. TBE's SUE field investigation was performed during the period 12-26-06 through 3-28-08. Changes to utilities after these dates may have been made and therefore may result in variances from this plan. Consideration should be given to updating this plan if deemed advisable prior to final design and construction.

205 W. WACKER DRIVE
 SUITE 1020
 CHICAGO, IL 60606
 (312) 704-1970

REVISIONS	DATE
① ADDED TH# 1-7 REVISED WATER LOCATION	1/27/12

ILLINOIS DEPARTMENT OF TRANSPORTATION
 SUE Investigation of Underground Utilities
 IL RT. 31 at IL RT. 176 and Terra Cotta Road
 Crystal Lake, IL
 McHenry County
 Section No. 112-R-N
 Contract No. 62537
 DRAWN BY : KLC
 SCALE : 1" = 50'