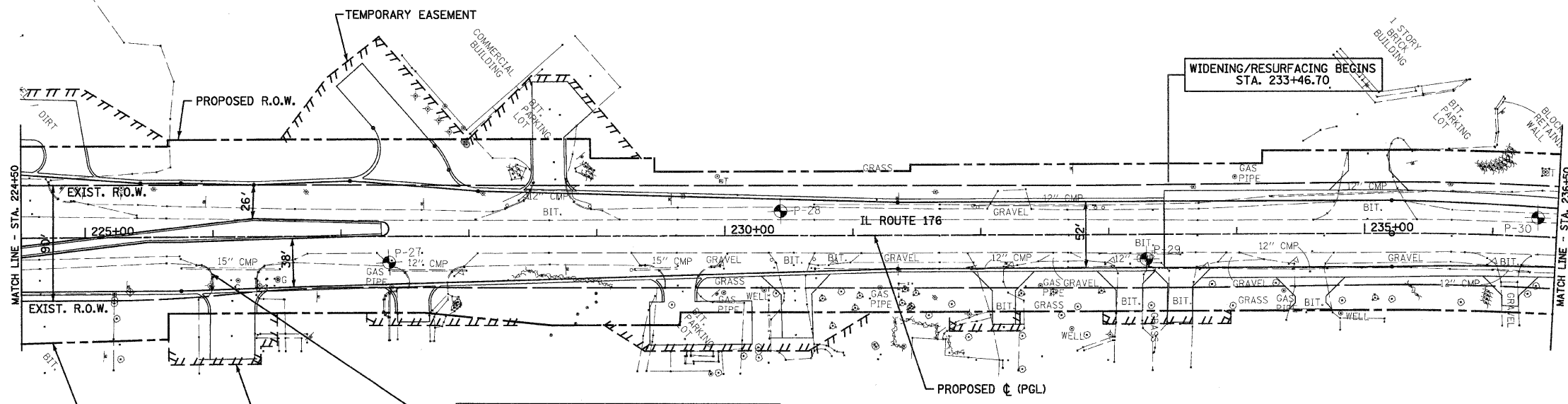


F.A.P. RTE.	SECTION	COUNTY	TOTAL SHEETS	SHEET NO.
336	112R-N	McHENRY	266	42
STA. 224+50 TO STA. 236+50				
FED. ROAD DIST. NO. ILLINOIS FED. AID PROJECT				
CONTRACT NO. 62537				

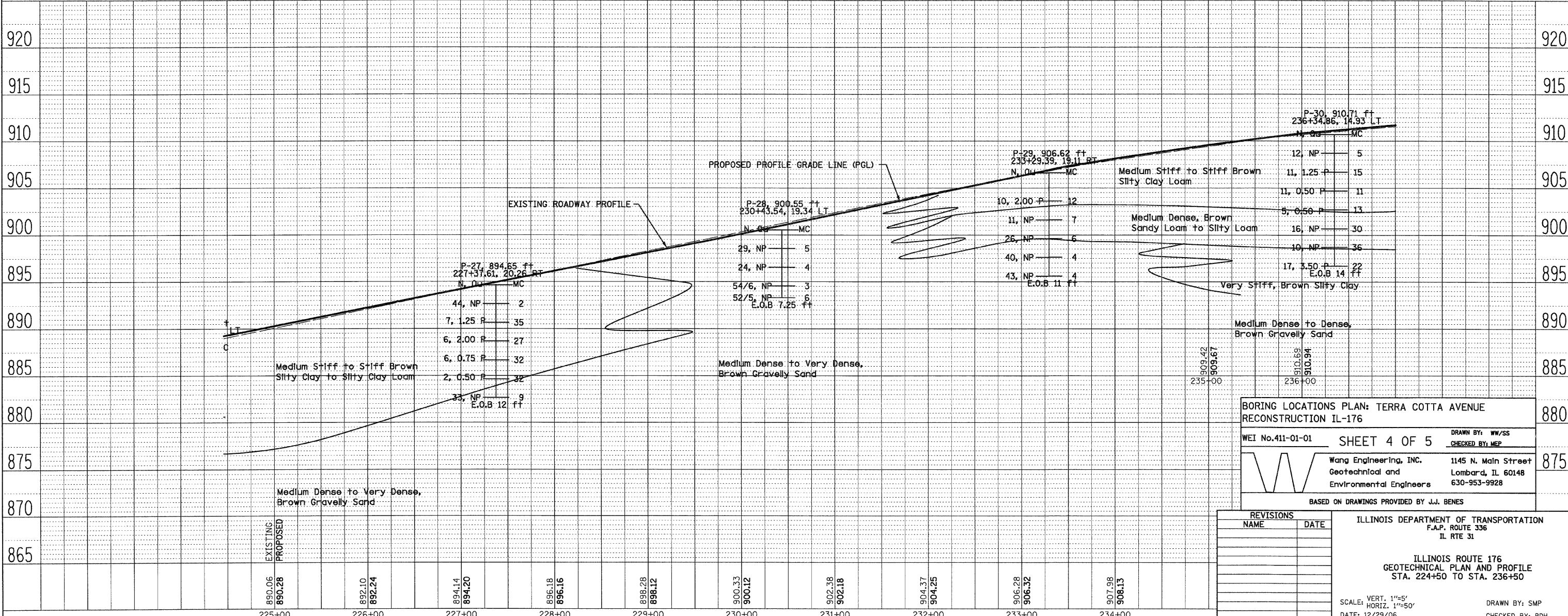
PLAN	SURVEYED	DATE
NOTE BOOK	ALIGNED	
NO.	BY	

PROFILE	SURVEYED	DATE
NOTE BOOK	GRADES CHECKED	
NO.	BY	



BM*5:
CUT "X" IN TOP OF CONCRETE CURB AT THE SOUTH DRIVEWAY RETURN TO TOM CROSSTOWN SERVICE.
CUT CROSS AT STA. 225+99 RT.
ELEV.=895.23

NOT TO BE USED FOR DESIGN/CONSTRUCTION PURPOSE



BORING LOCATIONS PLAN: TERRA COTTA AVENUE RECONSTRUCTION IL-176

WEI No. 411-01-01 SHEET 4 OF 5

Wang Engineering, INC. 1145 N. Main Street
Geotechnical and Environmental Engineers Lombard, IL 60148
630-953-9928

DRAWN BY: WW/SS
CHECKED BY: MEP

BASED ON DRAWINGS PROVIDED BY J.J. BENES

REVISIONS	
NAME	DATE

ILLINOIS DEPARTMENT OF TRANSPORTATION
F.A.P. ROUTE 336
IL RTE 31

ILLINOIS ROUTE 176
GEOTECHNICAL PLAN AND PROFILE
STA. 224+50 TO STA. 236+50

SCALE: VERT. 1"=5'
HORIZ. 1"=50'

DATE: 12/29/06

DRAWN BY: SMP
CHECKED BY: BDH