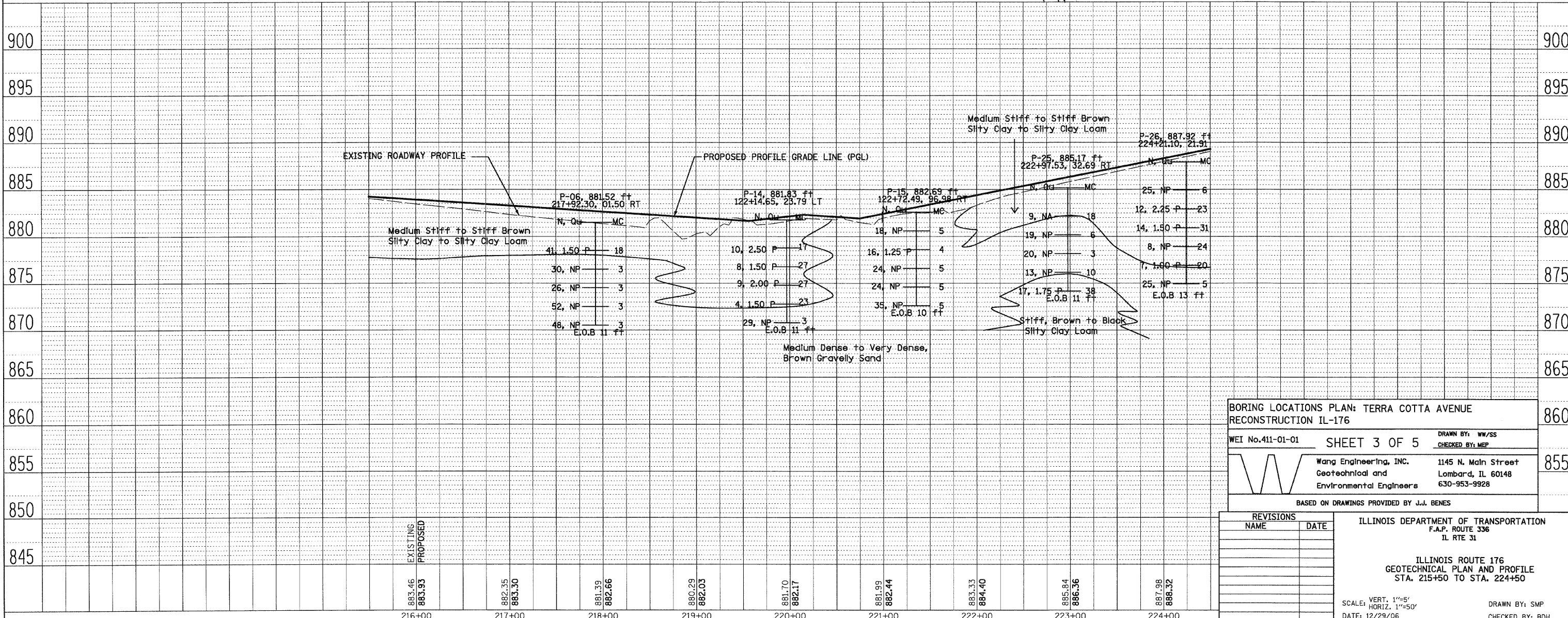
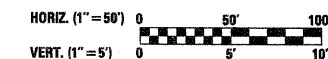
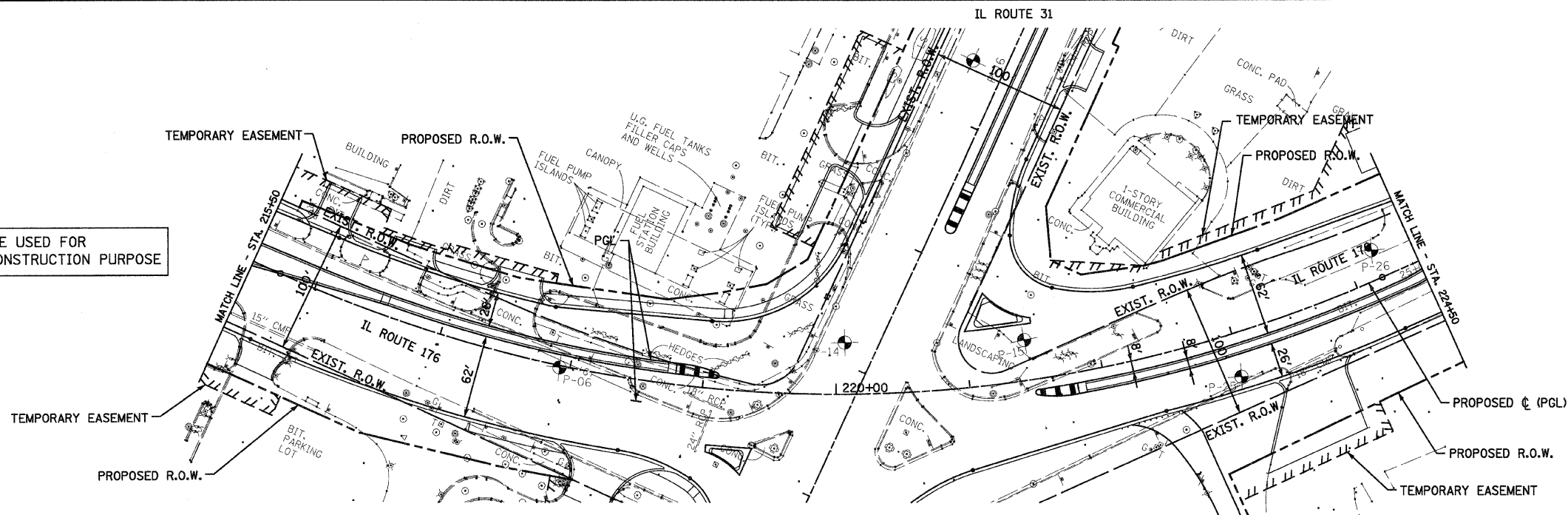


F.A.P. RTE.	SECTION	COUNTY	TOTAL SHEETS	SHEET NO.
336	112R-N	McHENRY	266	41
STA. 215+50 TO STA. 224+50				
FED. ROAD DIST. NO. ILLINOIS FED. AID PROJECT				
CONTRACT NO. 62537				

PLAN	SURVEYED	DATE
NOTE BOOK NO.	BY	
ALIGNED CHECKED		
RT. OF WAY CHECKED		
PAID FILE NAME		

PROFILE	SURVEYED	DATE
NOTE BOOK NO.	BY	
PROF. CHECKED		
QUAL. NOTED		
STRUCTURE NOTATIONS DIFF.		

NOT TO BE USED FOR DESIGN/CONSTRUCTION PURPOSE



**BORING LOCATIONS PLAN: TERRA COTTA AVENUE RECONSTRUCTION IL-176**

WEI No.411-01-01 SHEET 3 OF 5

Wang Engineering, Inc.  
Geotechnical and Environmental Engineers  
1145 N. Main Street  
Lombard, IL 60148  
630-953-9928

BASED ON DRAWINGS PROVIDED BY J.J. BENES

REVISIONS	NAME	DATE

ILLINOIS DEPARTMENT OF TRANSPORTATION  
F.A.P. ROUTE 336  
IL RTE 31

ILLINOIS ROUTE 176  
GEOTECHNICAL PLAN AND PROFILE  
STA. 215+50 TO STA. 224+50

SCALE: VERT. 1"=5'  
HORIZ. 1"=50'

DATE: 12/29/06

DRAWN BY: SMP  
CHECKED BY: BDH