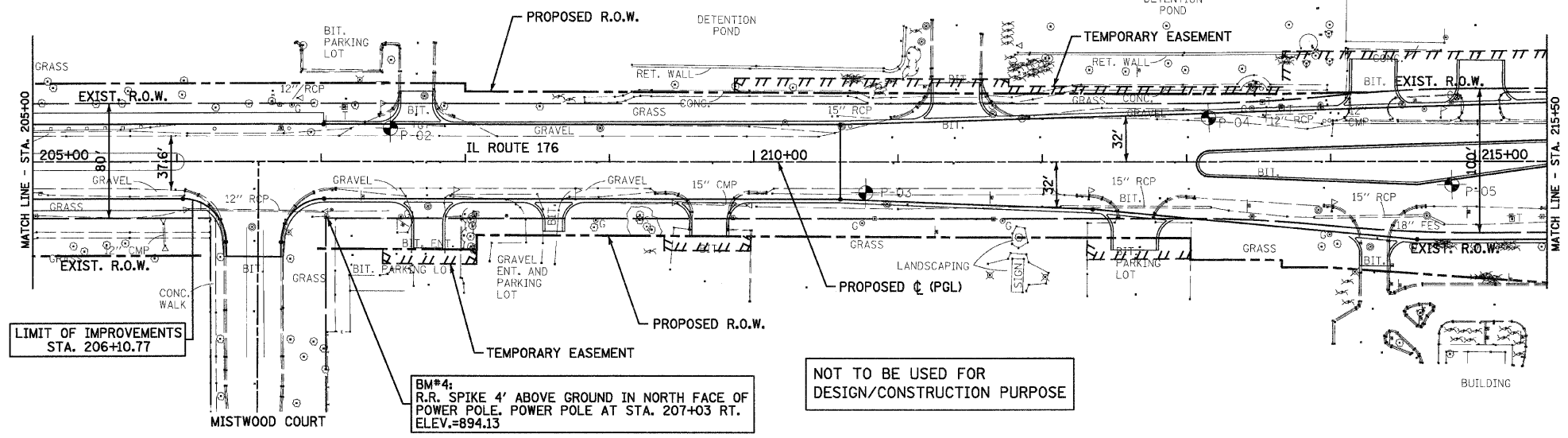


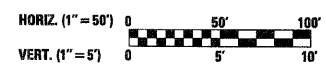
F.A.P. RTE.	SECTION	COUNTY	TOTAL SHEETS	SHEET NO.
336	112R-N	McHENRY	266	40
STA. 205+00 TO STA. 215+50				
FED. ROAD DIST. NO. ILLINOIS FED. AID PROJECT				
CONTRACT NO. 62537				



LIMIT OF IMPROVEMENTS STA. 206+10.77

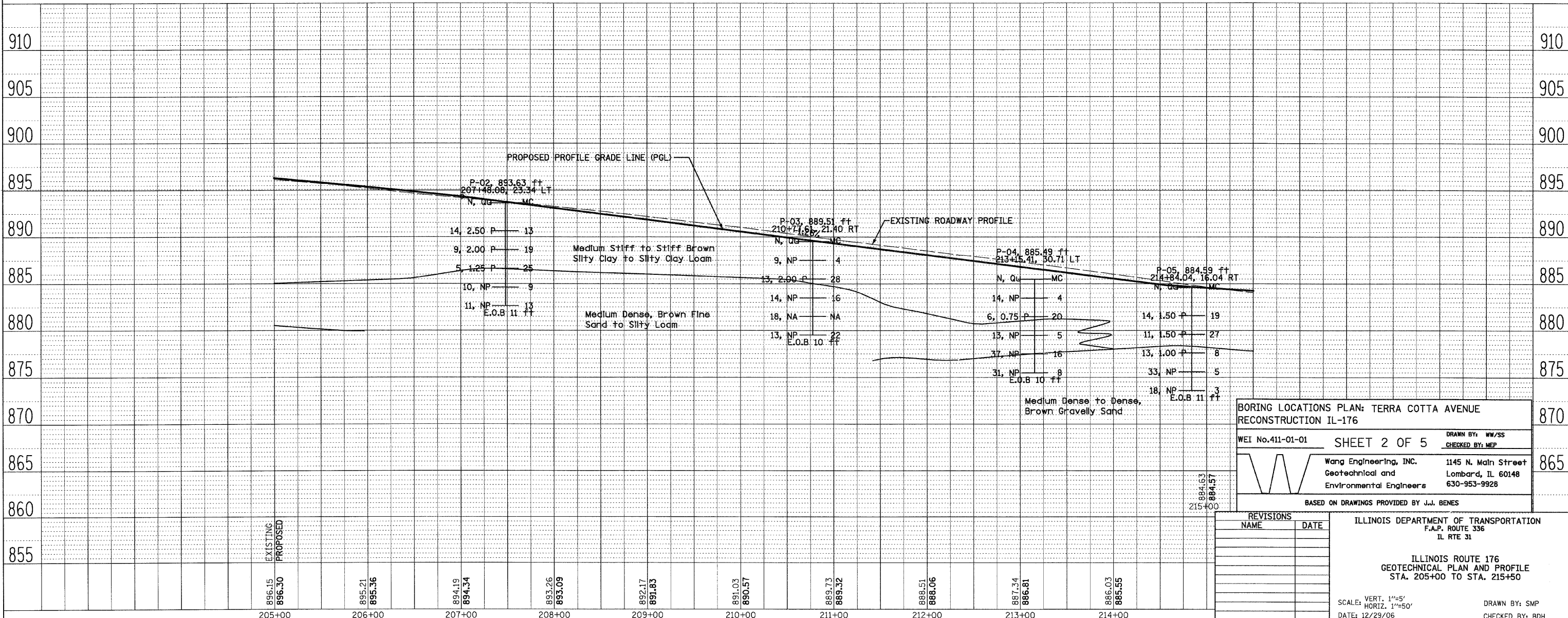
BM#4: R.R. SPIKE 4' ABOVE GROUND IN NORTH FACE OF POWER POLE. POWER POLE AT STA. 207+03 RT. ELEV.=894.13

NOT TO BE USED FOR DESIGN/CONSTRUCTION PURPOSE



PLAN	SURVISED	DATE
NOTE BOOK	BY	
NO.		

PROFILE	SURVISED	DATE
NOTE BOOK	BY	
NO.		



PROPOSED PROFILE GRADE LINE (PGL)

EXISTING ROADWAY PROFILE

Soil conditions:
 - Medlum Stiff to Stiff Brown Silty Clay to Silty Clay Loam
 - Medlum Dense, Brown Fine Sand to Silty Loam
 - Medlum Dense to Dense, Brown Gravelly Sand

Boring locations and data:
 - P-02: 893.63 ft, 207+48.08, 23.34 LT
 - P-03: 889.51 ft, 210+71.61, 21.40 RT
 - P-04: 885.49 ft, 213+15.41, 30.71 LT
 - P-05: 884.59 ft, 214+84.04, 16.04 RT

BORING LOCATIONS PLAN: TERRA COTTA AVENUE RECONSTRUCTION IL-176

WEI No.411-01-01 SHEET 2 OF 5

Wang Engineering, Inc. 1145 N. Main Street
 Geotechnical and Lombard, IL 60148
 Environmental Engineers 630-953-9928

BASED ON DRAWINGS PROVIDED BY J.J. BENES

REVISIONS	NAME	DATE

ILLINOIS DEPARTMENT OF TRANSPORTATION
 F.A.P. ROUTE 336
 IL RTE 31

ILLINOIS ROUTE 176
 GEOTECHNICAL PLAN AND PROFILE
 STA. 205+00 TO STA. 215+50

SCALE: VERT. 1"=5'
 HORIZ. 1"=50'

DATE: 12/29/06

DRAWN BY: SMP
 CHECKED BY: BDH

896.15	895.21	894.19	893.26	892.17	891.03	889.73	888.51	887.34	886.03
896.30	895.36	894.34	893.09	891.83	890.57	889.32	888.06	886.81	885.55
205+00	206+00	207+00	208+00	209+00	210+00	211+00	212+00	213+00	214+00