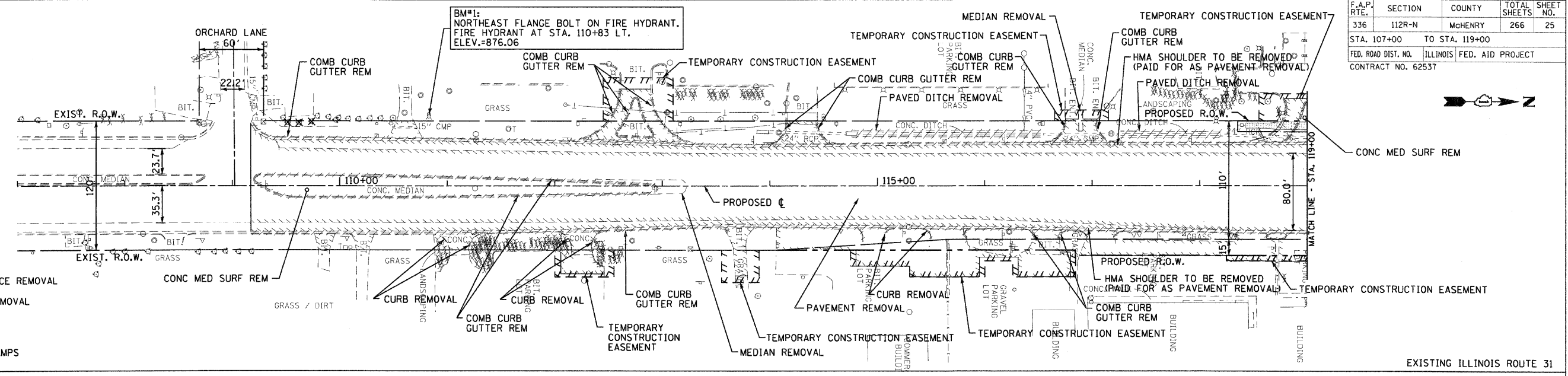
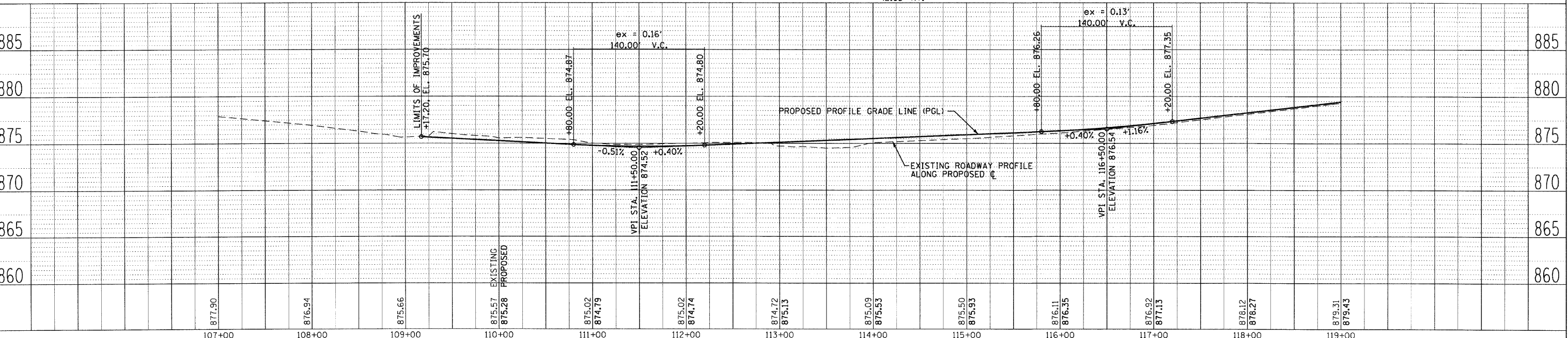
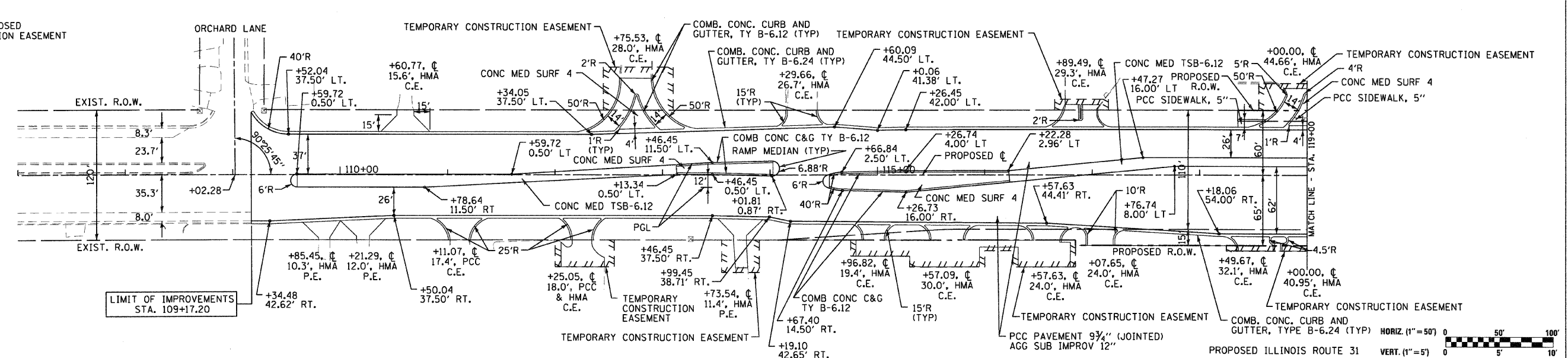


F.A.P. RTE.	SECTION	COUNTY	TOTAL SHEETS	SHEET NO.
336	112R-N	MCHENRY	266	25
STA. 107+00		TO STA. 119+00		
FED. ROAD DIST. NO.		ILLINOIS FED. AID PROJECT		
		CONTRACT NO. 62537		



- LEGEND**
- PAVEMENT REMOVAL OR DRIVEWAY PAVEMENT REMOVAL OR BIT. SURFACE REMOVAL
 - COMBINATION CURB AND GUTTER REMOVAL OR CURB REMOVAL (AS NOTED)
 - SIDEWALK REMOVAL
 - * DETECTABLE WARNINGS ON CURB RAMPS

NOTE:
 1) REFER TO PLAT OF HIGHWAYS FOR PROPOSED RIGHT-OF-WAY AND TEMPORARY CONSTRUCTION EASEMENT STATION AND OFFSET LOCATION



PLAN AND PROFILE IL. RTE. 31 STA. 107+00 TO STA. 119+00

DATE	BY	REVISION

DATE	BY	REVISION