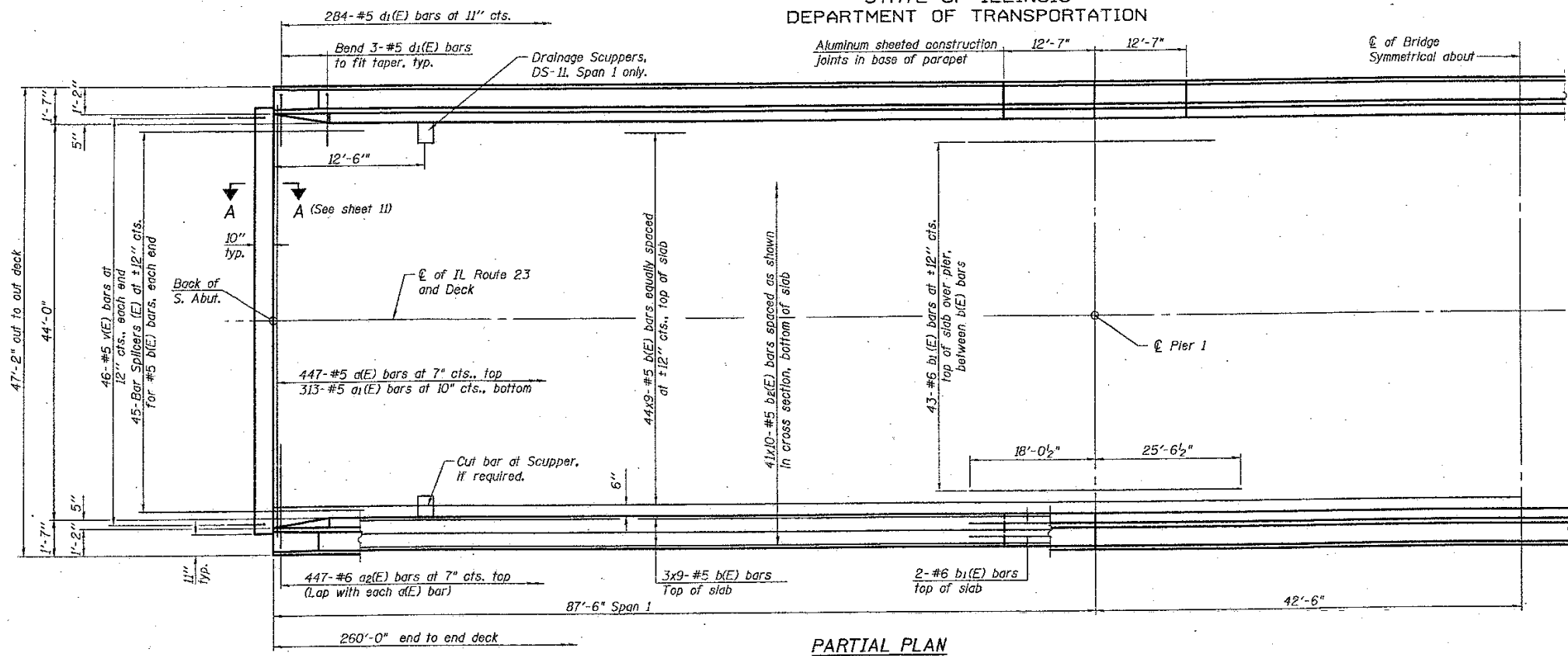


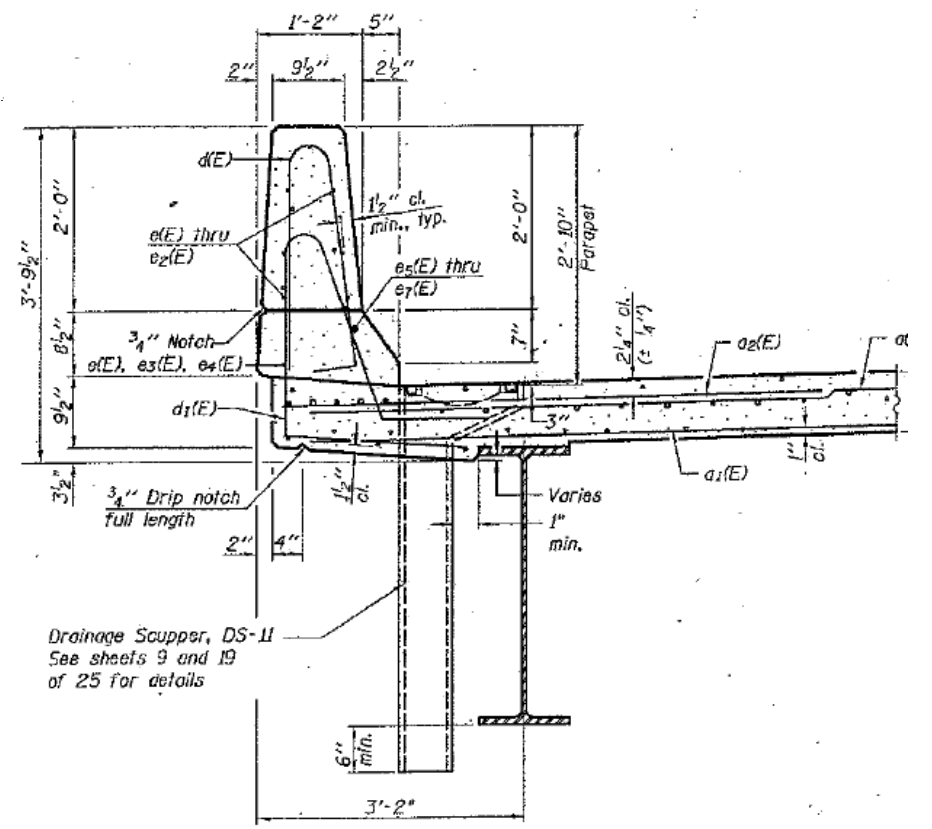
ROUTE VARIOUS	SECTION 2011-227-1	COUNTY MCHENRY	TOTAL SHEETS 53	SHEET NUMBER 48
------------------	-----------------------	-------------------	-----------------------	-----------------------

CONTRACT NO. 60R91

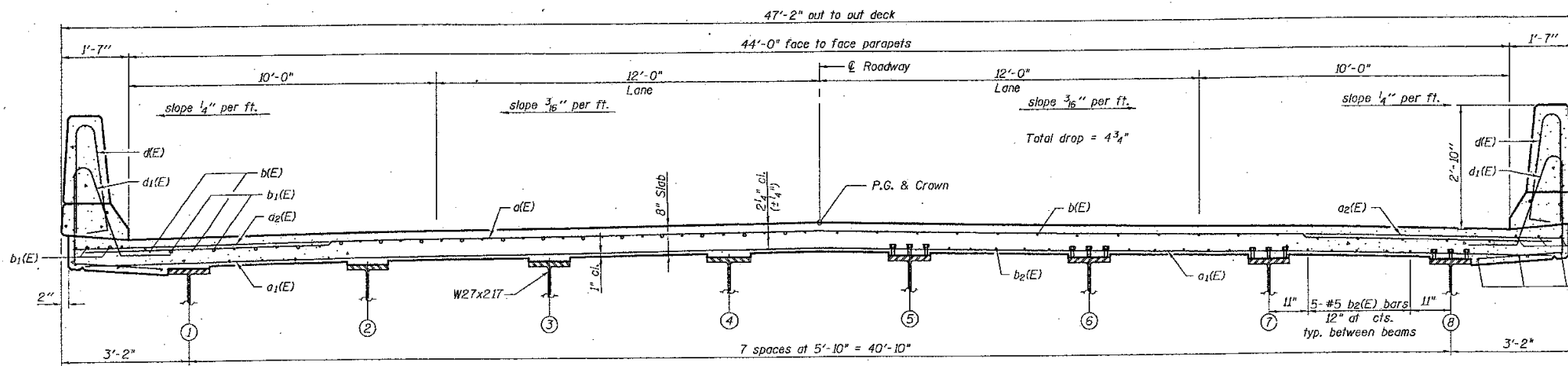
STATE OF ILLINOIS  
DEPARTMENT OF TRANSPORTATION



PARTIAL PLAN



SECTION THRU PARAPET



CROSS SECTION  
(Looking North)

**FOR INFORMATION ONLY**

ILLINOIS DEPARTMENT OF  
TRANSPORTATION  
  
EXISTING PLAN & CROSS SECTION  
LOCATION 20 (SN 056-0001)  
IL 23 OVER KISHWAUKEE RIVER  
SHEET 1 OF 1