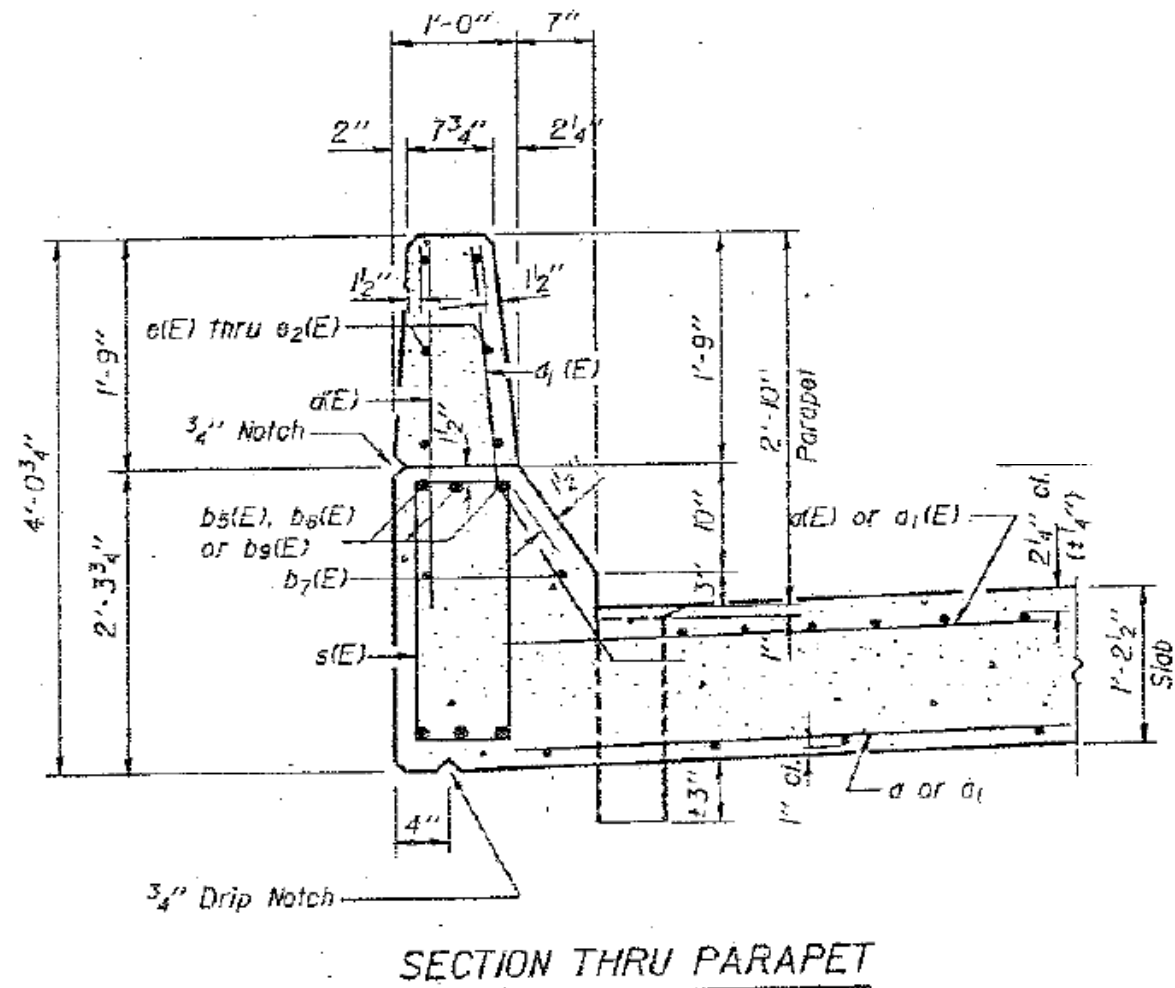
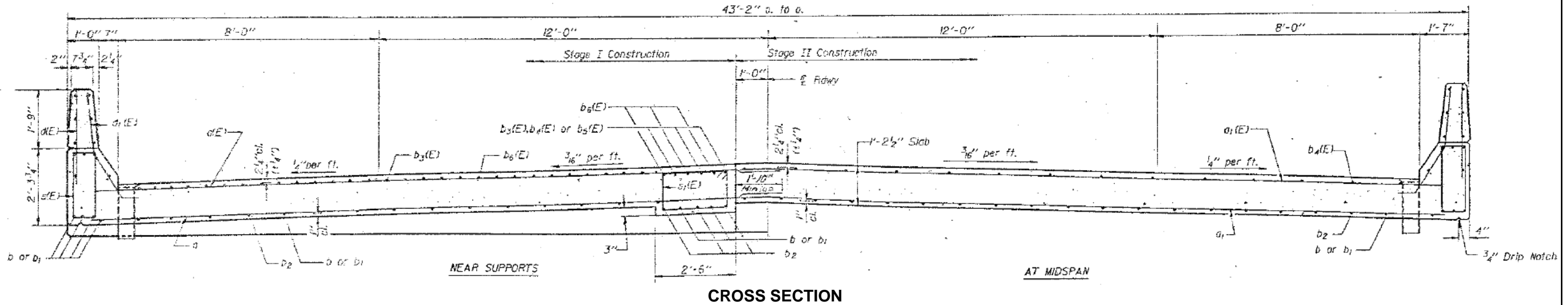


ROUTE	SECTION	COUNTY	TOTAL SHEETS	SHEET NUMBER
VARIOUS	2011-227-1	MCHENRY	53	24

CONTRACT NO. 60R91



FOR INFORMATION ONLY

ILLINOIS DEPARTMENT OF
TRANSPORTATION

EXISTING PLAN & CROSS SECTION
LOCATION 3 (SN 056-0051)
US 14 OVER KISHWAUKEE RIVER
SHEET 2 OF 2