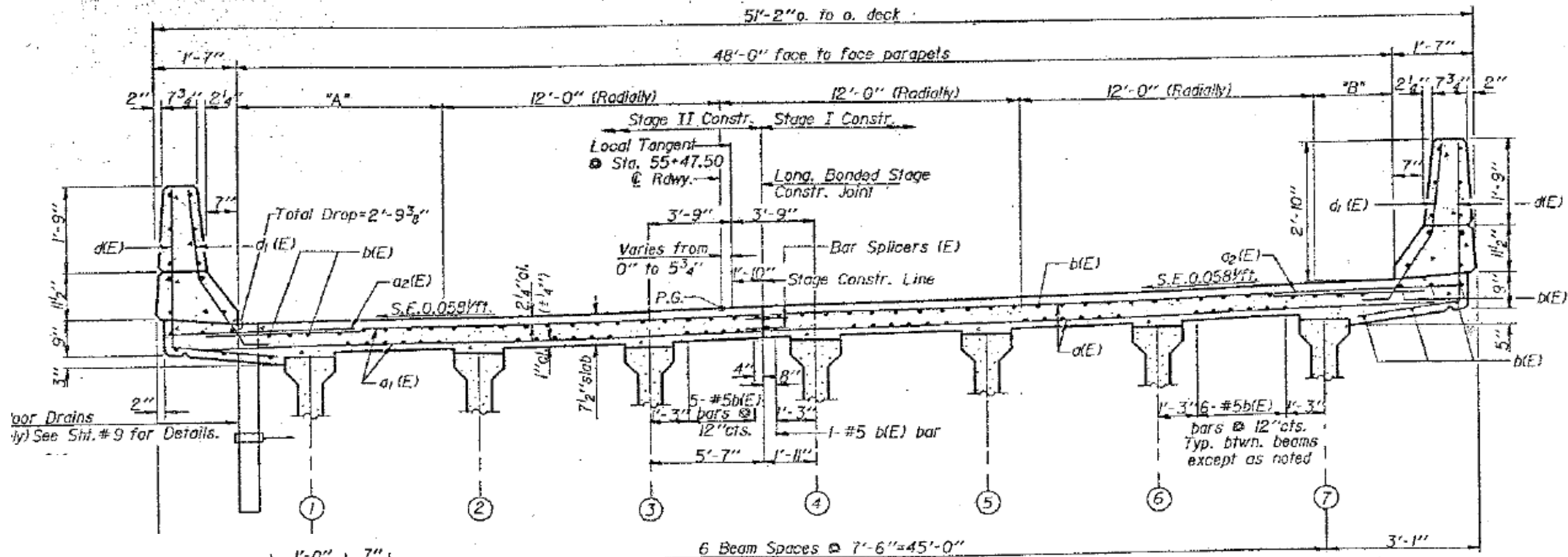
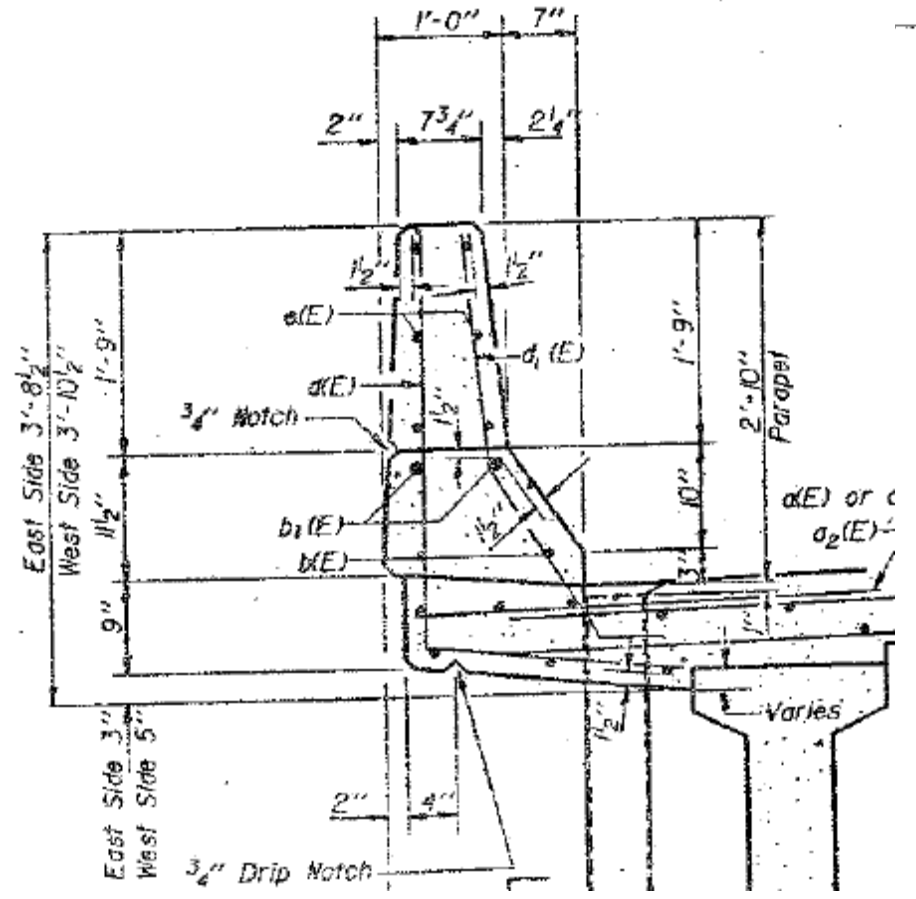


<b>ROUTE</b>	<b>SECTION</b>	<b>COUNTY</b>	<b>TOTAL SHEETS</b>	<b>SHEET NUMBER</b>
VARIOUS	2011-227-1	MCHENRY	53	22

CONTRACT NO. 60R91



**CROSS SECTION**  
(Looking South)



**SECTION THRU PARAPET**

**FOR INFORMATION ONLY**

ILLINOIS DEPARTMENT OF  
TRANSPORTATION

EXISTING PLAN & CROSS SECTION  
LOCATION 2 (SN 056-0052)  
US 14 OVER RUSH CREEK  
SHEET 2 OF 2