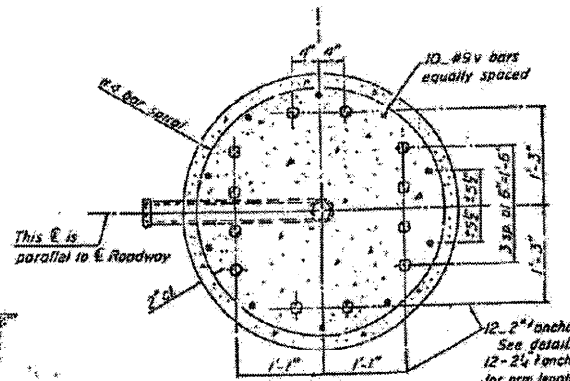
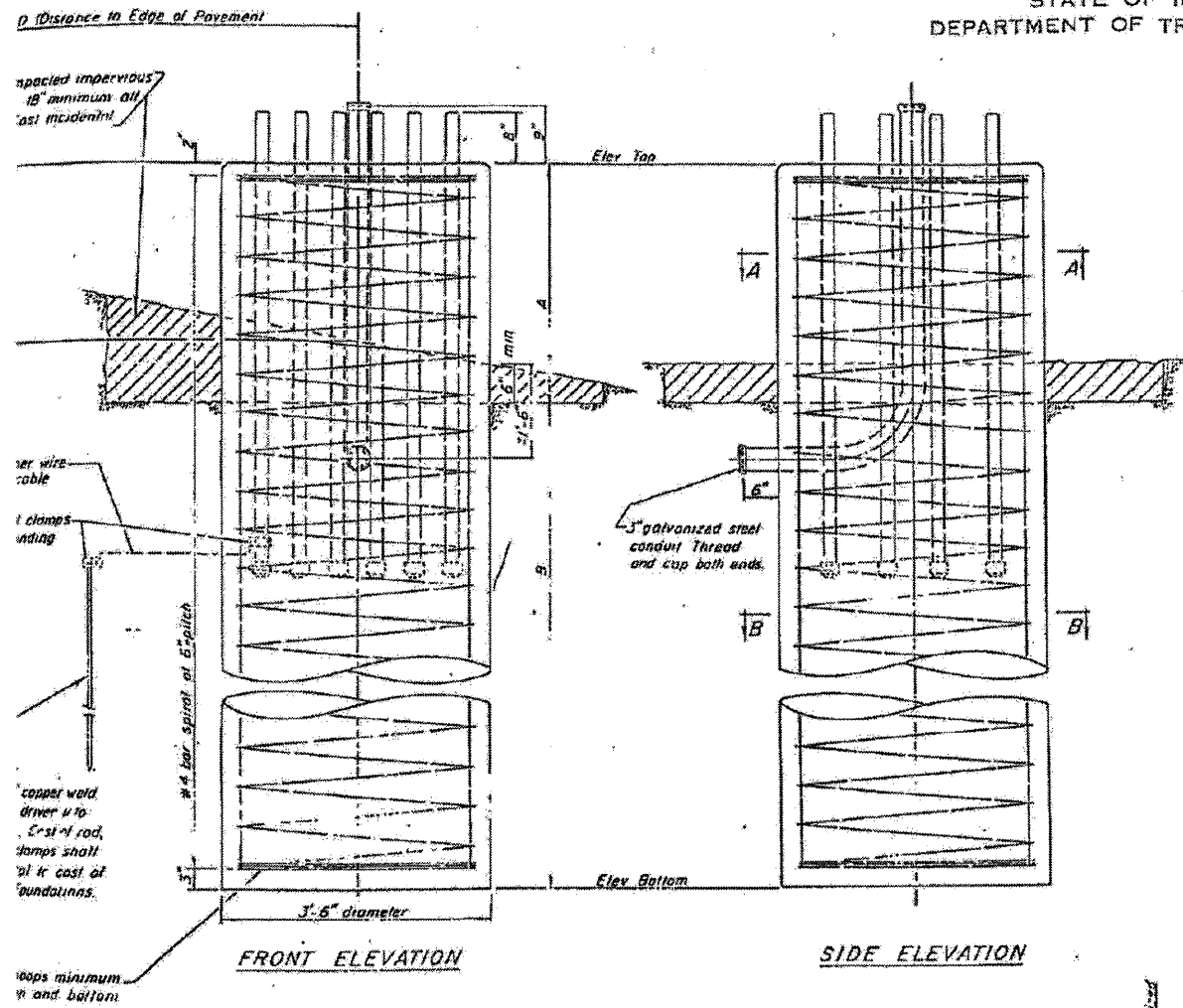


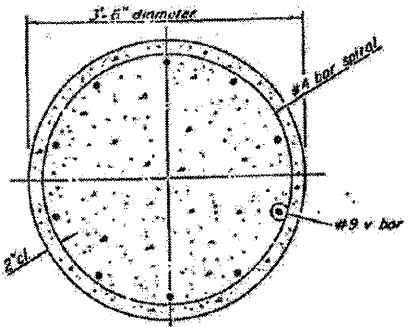
STATE OF ILLINOIS
DEPARTMENT OF TRANSPORTATION

PROJECT NO.	SECTION	SHEET NO.	TOTAL SHEETS
11-1-1	5	138	138

* 531(142)23-1(29) (1989-107) DR



SEC. A-A
NOTE: The anchor bolts and reinforcing cage must be in place before pouring concrete, and shall be adjusted for proper placement of anchor bolts as shown.



SEC. B-B

DEPTH TABLE

L	B (Min.)
35'	17'
40'	20'
45'	25'
50'	33'
55'	35'

L = Arm Length

Struct. No.	Station	D	Elev. Top	Elev. Btm	A	Class X Concrete
EA-1	251+00 NB	20'-0"	723.5	708.5	14'	B-91
EA-3	197+00 SB	20'-0"	729.0	714.0	15'	B-91
EA-4	167+00 SB	20'-0"	728.0	703.0	25'	B-91

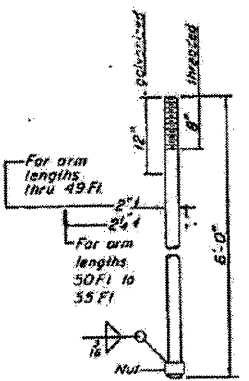
OVERHEAD SIGN STRUCTURES - CANTILEVER
DRILLED SHAFT CONCRETE FOUNDATION

FOR INFORMATION ONLY

BAR LIST - EACH FOUNDATION

No.	Size	Qty	Shape
10	#9	1	A+B-5"

4-bar spiral - see Front Elevation



ANCHOR BOLT DETAILS
(ASTM A-57E - $F_y = 55,000$ psi)
Galvanize upper 12" in accordance with AASHTO M232
Provide 3 nuts and 1 washer for each anchor bolt.

DESIGNED	DJS
DRAWN	LKB
CHECKED	RWL
DATE	12-13-11

*F.A.I. 290 (INTERSTATE 290)
*F.A.U. 342 (IL ROUTE 53)

PROJECT: ROAD BY BAYVIEW & WOODMAN, INC.
 STATE OF ILLINOIS - PROFESSIONAL DESIGN FIRM
 LICENSE NO. 184-000211 - EXPIRES 4/30/2013
 655332 PM22/2008.corr.pbxwood.com/projects/CrystalLake/LDOT/06053-40-Design/WD-27-IL-53_Signing/CAID-SURVEY/UPRANKING/WORKS/06053-WD-27-HPD-SHT-5.dgn



USER NAME	+ 23lukb	DESIGNED	- DJS	REVISED	-
PLOT SCALE	= 1,0000' / 1"	DRAWN	- LKB	REVISED	-
PLOT DATE	= 3/22/2012	CHECKED	- RWL	REVISED	-
		DATE	- 12-13-11	REVISED	-

STATE OF ILLINOIS
DEPARTMENT OF TRANSPORTATION

EXISTING CANTILEVER PLANS
FOR INFORMATION ONLY

SCALE: SHEET NO. 5 OF 5 SHEETS STA. TO STA.

F.A.I. RTE.	SECTION	COUNTY	TOTAL SHEETS	SHEET NO.
	2011-024-SG	DuPAGE/COOK	132	132N
CONTRACT NO. 60P24			ILLINOIS FED. AID PROJECT	