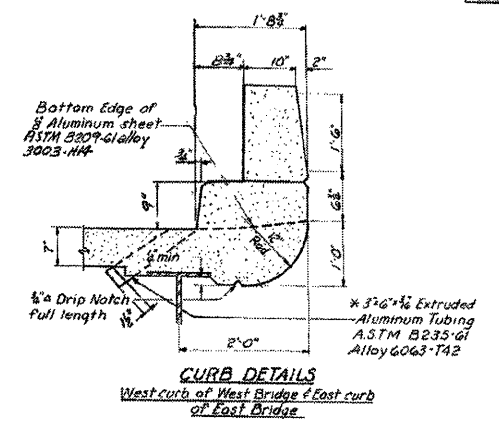
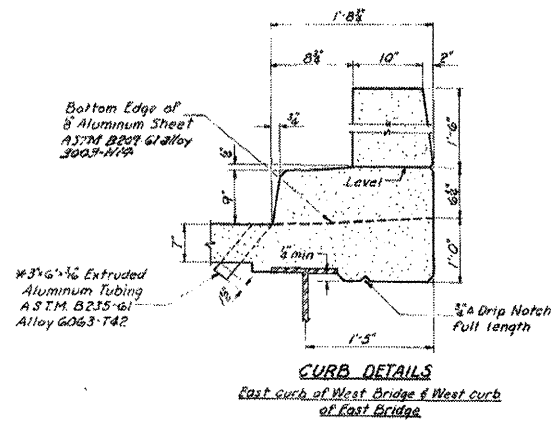


STATE OF ILLINOIS
DEPARTMENT OF PUBLIC WORKS & BUILDINGS
DIVISION OF HIGHWAYS

| | | | | | |
|--------|---------|------|---|----|-----------|
| NO. 50 | PK 118 | COOK | 7 | 22 | 19 SHEETS |
| 1.4.11 | 23.1.11 | COOK | 7 | 22 | 19 SHEETS |

FOR INFORMATION ONLY



* Cost of Aluminum sheets and tubing shall be incidental to class 'X' concrete.

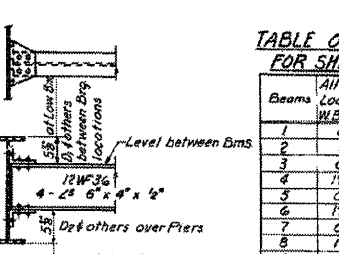
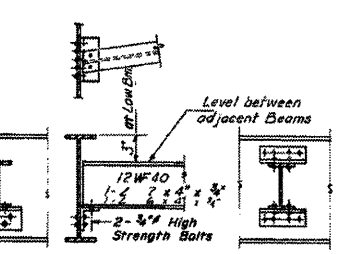
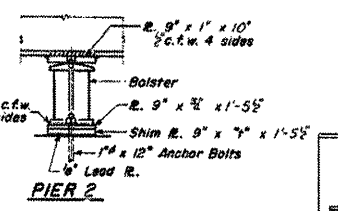
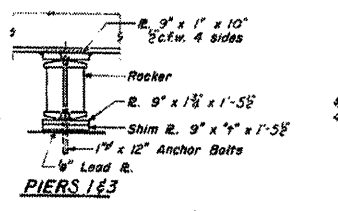
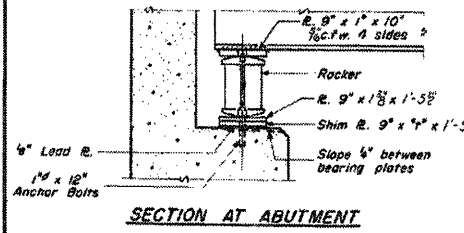
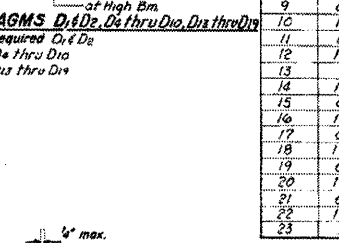
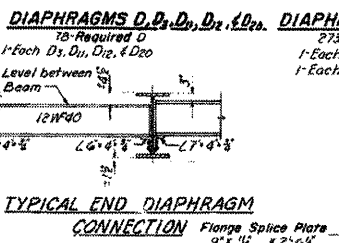
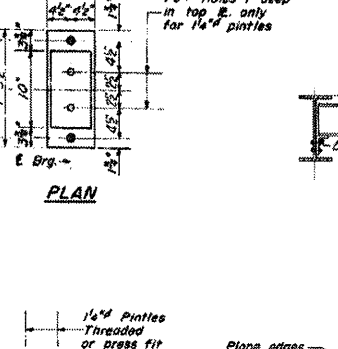
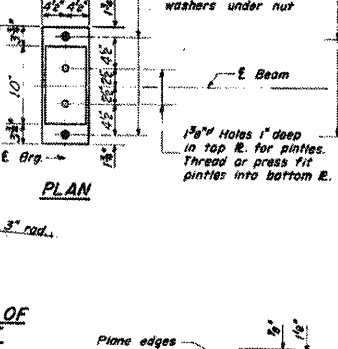
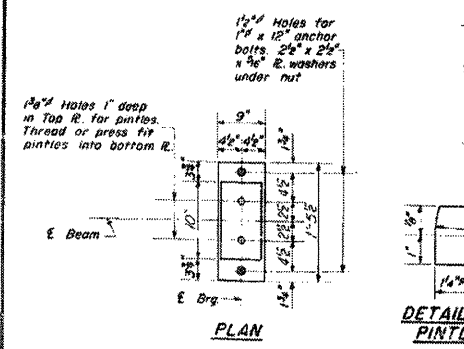
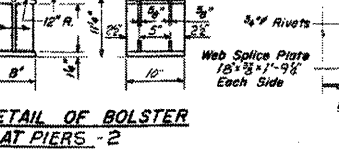
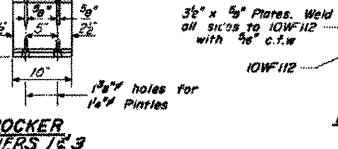
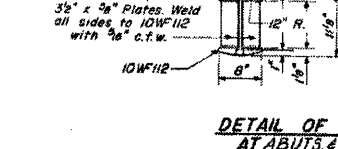


TABLE OF DIMENSIONS FOR SHIM PLATES

| Beam Location | All Brg. Locations W Bridge | All Brg. Locations E Bridge |
|---------------|-----------------------------|-----------------------------|
| 1 | 0' | 0' |
| 2 | 1' | 1 1/2' |
| 3 | 0' | 0' |
| 4 | 1 1/2' | 1 1/2' |
| 5 | 0' | 0' |
| 6 | 1 1/2' | 1 1/2' |
| 7 | 0' | 0' |
| 8 | 1 1/2' | 1 1/2' |
| 9 | 0' | 0' |
| 10 | 1 1/2' | 1 1/2' |
| 11 | 0' | 0' |
| 12 | 1 1/2' | 1 1/2' |
| 13 | 0' | 0' |
| 14 | 1 1/2' | 1 1/2' |
| 15 | 0' | 0' |
| 16 | 1 1/2' | 1 1/2' |
| 17 | 0' | 0' |
| 18 | 1 1/2' | 1 1/2' |
| 19 | 0' | 0' |
| 20 | 1 1/2' | 1 1/2' |
| 21 | 0' | 0' |
| 22 | 1 1/2' | 1 1/2' |
| 23 | 0' | 0' |



| | |
|---------------------------|---------------------------|
| DESIGNED: J. F. O'Connell | EXAMINED: S. J. Dickerson |
| CHECKED: J. F. O'Connell | APPROVED: S. J. Dickerson |
| DRAWN: S. J. Dickerson | |
| CHECKED: J. F. O'Connell | |



EAST & WEST BRIDGE
S.B. RT 53 SEC 531-1-H(B-F)5
COOK COUNTY
STA. 119+77+27

I-2 7-2-62

COPYRIGHT © 2005 BY BAXTER & WOODMAN, INC. ALL RIGHTS RESERVED. PROJECT NO. 05-00121. EXPIRES 4/30/2013. PROJECT: I-55 SIGNING, CADD, SURVEY, URMWMS, DMS, 00053-WO-27-INFO-SHTS.dgn
 6/22/12 2:08 PM 22/208 corp.baxwood.com project files / c:\ystral lake\ldot\00053-WO-27-INFO-SHTS.dgn



| | | |
|-------------------------------|-----------------|-----------|
| USER NAME = 23lukb | DESIGNED - DJS | REVISED - |
| PLOT SCALE = 1:8000 1/4" = 1' | DRAWN - UKB | REVISED - |
| PLOT DATE = 3/22/2012 | CHECKED - RWL | REVISED - |
| | DATE - 12-13-11 | REVISED - |

STATE OF ILLINOIS
DEPARTMENT OF TRANSPORTATION

EXISTING BRIDGE PLANS
FOR INFORMATION ONLY

SCALE: SHEET NO. 9 OF 9 SHEETS STA. TO STA.

| | | | |
|---|-------------|-------------|--------------------|
| F.A.1 RTE. | SECTION | COUNTY | TOTAL SHEETS NO. |
| | 2011-024-SG | DuPAGE/COOK | 132 1321 |
| FED. ROAD DIST. NO. 1 ILLINOIS FED. AID PROJECT | | | CONTRACT NO. 60P24 |

*F.A.I. 290 (INTERSTATE 290)
*F.A.U. 342 (IL ROUTE 53)