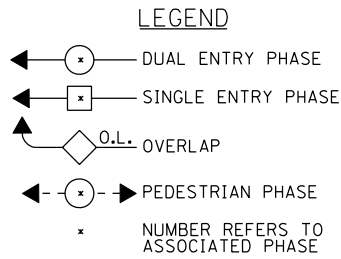
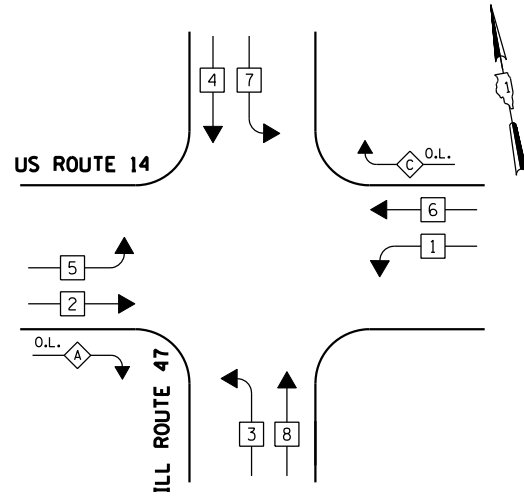


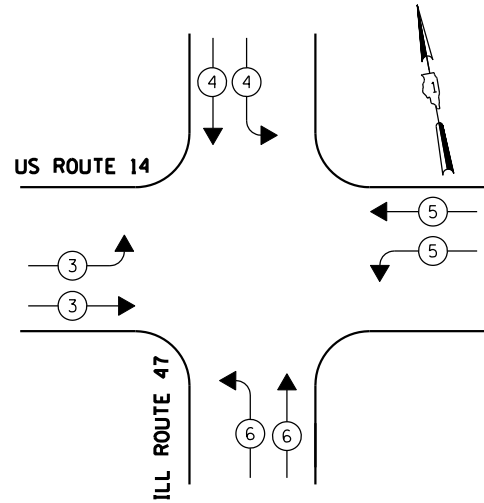
CONTROLLER SEQUENCE



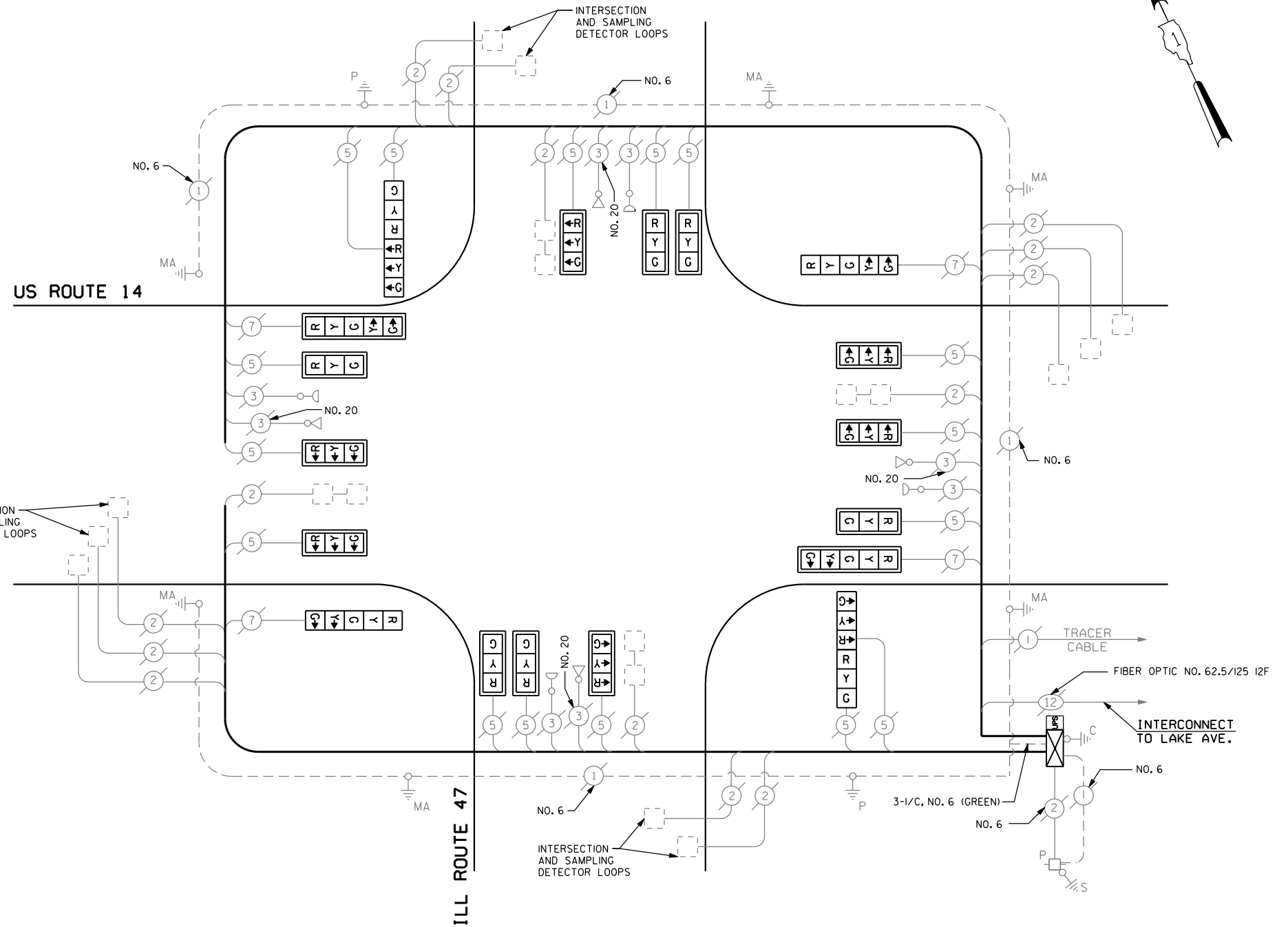
EXISTING PHASE DESIGNATION DIAGRAM

OVERLAP LETTER	PERMISSIVE PHASE	PROTECTED PHASE
A	= 2 + 3	
C	= 6 + 7	

EMERGENCY VEHICLE PREEMPTION SEQUENCE



EMERGENCY VEHICLE PREEMPTORS				
EMERGENCY VEHICLE PREEMPTOR	3	4	5	6
MOVEMENT	→	↓	←	↑



MODIFIED CABLE PLAN

(NOT TO SCALE)

SCHEDULE OF QUANTITIES

QUANTITY	UNIT	ITEM
40	SO FT	SIGN PANEL - TYPE 1
40	SO FT	REMOVE SIGN PANEL - TYPE 1
1	EACH	MAINTENANCE OF EXISTING TRAFFIC SIGNAL INSTALLATION
12	EACH	SIGNAL HEAD, LED, 1-FACE, 3-SECTION, MAST ARM MOUNTED
2	EACH	SIGNAL HEAD, LED, 1-FACE, 5-SECTION, BRACKET MOUNTED
2	EACH	SIGNAL HEAD, LED, 1-FACE, 5-SECTION, MAST ARM MOUNTED
2	EACH	SIGNAL HEAD, LED, 2-FACE, 3-SECTION, BRACKET MOUNTED
1	EACH	MODIFY EXISTING CONTROLLER CABINET
1	EACH	REMOVE EXISTING TRAFFIC SIGNAL EQUIPMENT
1	EACH	UNINTERRUPTIBLE POWER SUPPLY, SPECIAL
14	EACH	RETROREFLECTIVE TRAFFIC SIGNAL BACKPLATE

ALL BACKPLATES SHALL BE RETROREFLECTIVE TRAFFIC SIGNAL BACKPLATES.

I.D.O.T. TRAFFIC SIGNAL INSTALLATION ELECTRICAL SERVICE REQUIREMENTS					TOTAL WATTAGE
TYPE	NO LAMPS	WATTAGE INCAND.	LED	%OPERATION	
SIGNAL (RED)	20		17	0.50	170
(YELLOW)	20		25	0.25	125
(GREEN)	20		15	0.25	75
ARROW	8		12	0.10	9.6
PED. SIGNAL			25	1.00	
CONTROLLER	1		100	1.00	100
ILLUM. SIGN			25	0.05	
FLASHER				0.50	
ENERGY COSTS TO:					TOTAL = 479.6
ILLINOIS DEPARTMENT OF TRANSPORTATION 201 WEST CENTER COURT SCHAUMBURG, ILLINOIS 60196-1096					
ENERGY SUPPLY CONTACT: LISA COOK PHONE: (815) 477-5204 COMPANY: COMMONWEALTH EDISON					
FILE NAME =	USER NAME = \$USER\$	DESIGNED - PKG	REVISED -		
\$FILEL\$		DRAWN - EA, MG	REVISED -		
	PLOT SCALE = \$SCALE\$	CHECKED - PKG	REVISED -		
	PLOT DATE = \$DATE\$	DATE - 06/01/2011	REVISED -		

STATE OF ILLINOIS
DEPARTMENT OF TRANSPORTATION

MODIFIED CABLE PLAN, EXISTING PHASE DESIGNATION DIAGRAM,
EMERGENCY VEHICLE PREEMPTION SEQUENCE, AND SCHEDULE OF QUANTITIES
US ROUTE 14 AT ILL ROUTE 47

F.A.P. RTE.	SECTION	COUNTY	TOTAL SHEETS	SHEET NO.
305	2011-020-TS	MCHENRY	20	17
CONTRACT NO. 60P15				
FED. ROAD DIST. NO. 1 [ILLINOIS] FED. AID PROJECT				

SCALE: SHEET NO. OF SHEETS STA. TO STA.