

F.A.P. RTE.	SECTION	COUNTY	TOTAL SHEETS	SHEET NO.
305	2011-020-TS	McHENRY	20	01
FED. ROAD DIST. NO.	ILLINOIS	CONTRACT NO. 60P15		

P-91-423-11
D-91-470-11

*20 4/1=21



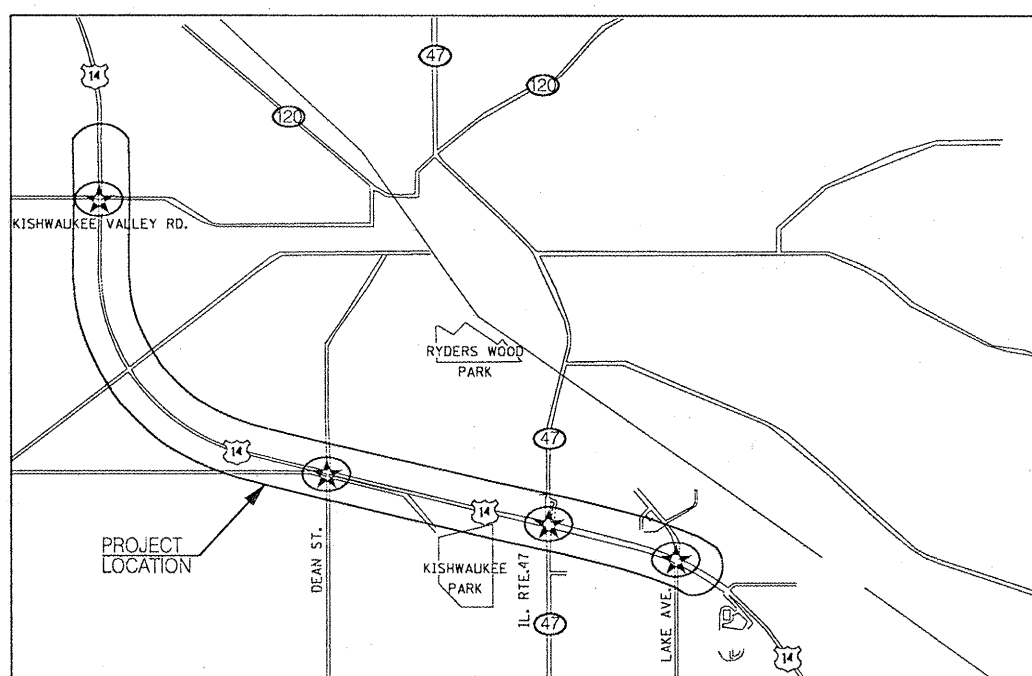
STATE OF ILLINOIS

DEPARTMENT OF TRANSPORTATION

DIVISION OF HIGHWAYS

PLANS FOR PROPOSED FEDERAL AID HIGHWAY

DISTRICT 1
HIGHWAY SAFETY IMPROVEMENT PROJECT
Traffic Signal Modernization Plans For
F.A.P. ROUTE 305 - US ROUTE 14
from Kishwaukee Valley Road to Lake Avenue
Section: 2011-020-TS
McHenry County
C-91-470-11
City of Woodstock
PROJECT: HSIP-0305(046)

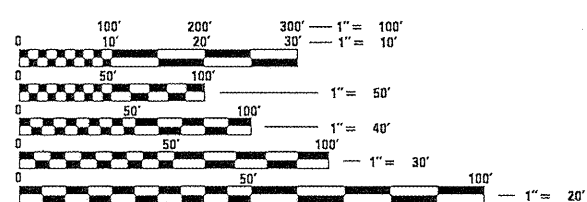


PROJECT LOCATION
GROSS LENGTH = 19,305 FEET = 3.656 MILES
NET LENGTH = 3,298 FEET = 0.625 MILES

INDEX OF SHEETS

SHEET NO	DESCRIPTION
1	COVER SHEET
2	STANDARDS LIST
3	SUMMARY OF QUANTITIES
4 - 9	STANDARD TRAFFIC SIGNAL DESIGN DETAILS (6-SHEETS)
10 - 11	TRAFFIC SIGNAL MODIFICATION PLAN US ROUTE 14 AT KISHWAUKEE VALLEY ROAD
12	MODIFIED CABLE PLAN, EXISTING PHASE DESIGNATION DIAGRAM, PROPOSED EMERGENCY VEHICLE PREEMPTION SEQUENCE, AND SCHEDULE OF QUANTITIES US ROUTE 14 AT KISHWAUKEE VALLEY ROAD
13	TRAFFIC SIGNAL MODIFICATION PLAN US ROUTE 14 AT DEAN STREET
14	MODIFIED CABLE PLAN, EXISTING PHASE DESIGNATION DIAGRAM, EMERGENCY VEHICLE PREEMPTION SEQUENCE, AND SCHEDULE OF QUANTITIES US ROUTE 14 AT DEAN STREET
15 - 16	TRAFFIC SIGNAL MODIFICATION PLAN US ROUTE 14 AT ILL ROUTE 47
17	MODIFIED CABLE PLAN, EXISTING PHASE DESIGNATION DIAGRAM, EMERGENCY VEHICLE PREEMPTION SEQUENCE, AND SCHEDULE OF QUANTITIES US ROUTE 14 AT ILL ROUTE 47
18	TRAFFIC SIGNAL MODIFICATION PLAN US ROUTE 14 AT LAKE AVENUE
19	MODIFIED CABLE PLAN, EXISTING PHASE DESIGNATION DIAGRAM, EMERGENCY VEHICLE PREEMPTION SEQUENCE, AND SCHEDULE OF QUANTITIES US ROUTE 14 AT LAKE AVENUE
20	ARTERIAL ROAD INFORMATION SIGN

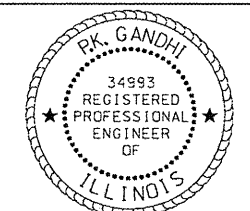
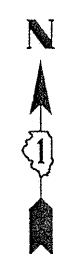
FOR LIST OF HIGHWAY STANDARDS, SEE SHEET NO. 2



FULL SIZE PLANS HAVE BEEN PREPARED USING STANDARD ENGINEERING SCALES. REDUCED SIZED PLANS WILL NOT CONFORM TO STANDARD SCALES. IN MAKING MEASUREMENTS ON REDUCED PLANS, THE ABOVE SCALES MAY BE USED.

J.U.L.I.E.
JOINT UTILITY LOCATION INFORMATION FOR EXCAVATION
1-800-892-0123
OR 811

DISTRICT 1 NO. (847) 705-4000
PROJECT ENGINEER: I. PLASCENCIA
UNIT CHIEF: D. DREW
TOWNSHIP(S): SENECA, DORR
CONTRACT NO. 60P15



P.K. Gandhi 1/26/2012
P.K. GANDHI, P.E.
NO. 062-034993
EXPIRES: 11/30/2013

STATE OF ILLINOIS
DEPARTMENT OF TRANSPORTATION
DIVISION OF HIGHWAYS

SUBMITTED Feb 3 20 12
Deann M. O'Keefe
DEPUTY DIRECTOR OF HIGHWAYS/REGION ENGINEER

March 23 20 12
John D. Baranzelli PE
actg ENGINEER OF DESIGN AND ENVIRONMENT

March 23 20 12
William R. Frey Sr
actg DIRECTOR OF HIGHWAYS/CHIEF ENGINEER

PRINTED BY THE AUTHORITY
OF THE STATE OF ILLINOIS

Rev.

BUREAU OF TRAFFIC - DARYLE DREW - (847) 705-4420