

STATE OF ILLINOIS  
DEPARTMENT OF TRANSPORTATION

F.A. RTE.	SECTION	COUNTY	TOTAL SHEETS	SHEET NO.
VARIOUS	D3 LIGHTING REPAIR 2024-3	KANKAKEE	5	1
		ILLINOIS	CONTRACT NO. 66P20	

**INDEX**

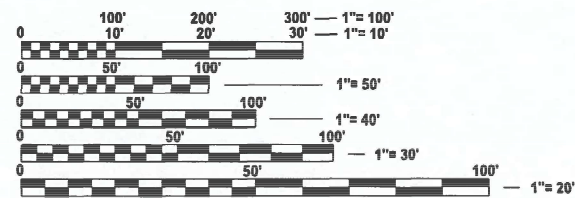
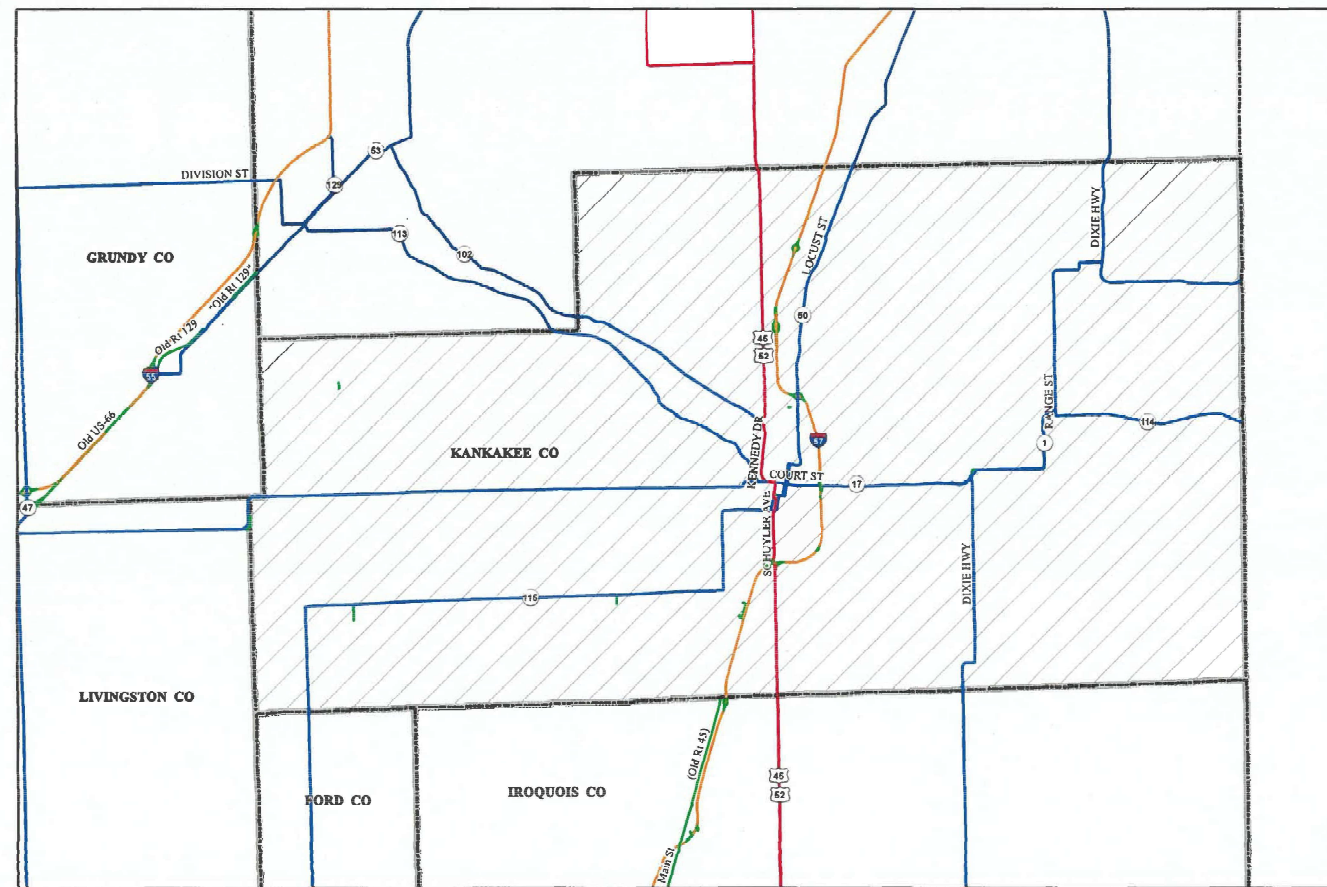
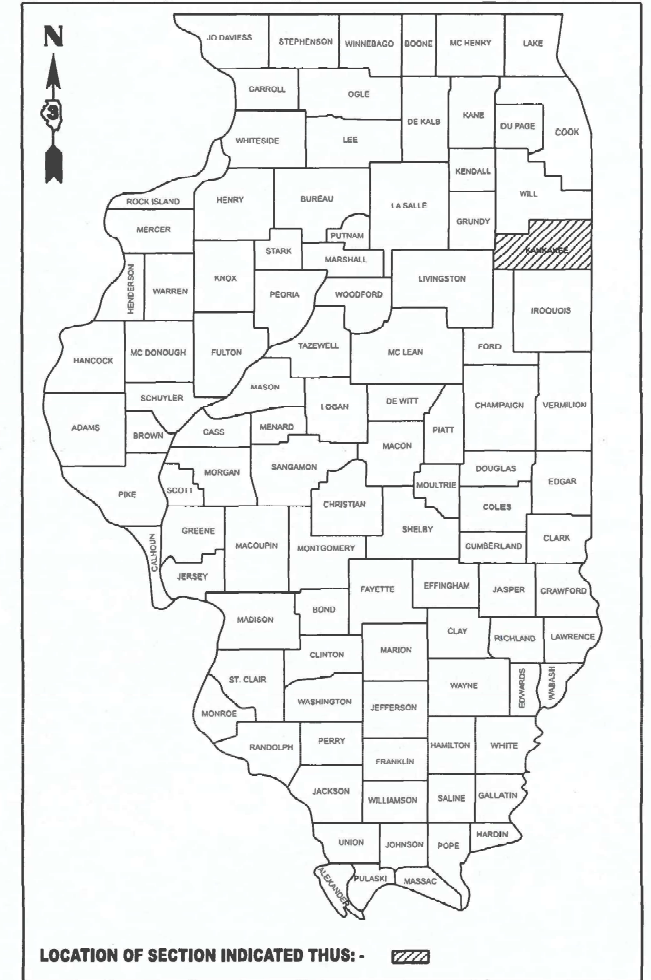
- 1 COVER SHEET
- 2 GENERAL NOTES AND HIGHWAY STANDARDS
- 3-5 SUMMARY OF QUANTITIES

**PROPOSED  
HIGHWAY PLANS**

**VARIOUS ROUTES  
SECTION D3 LIGHTING REPAIR 2024-3  
PROJECT  
AREA FOUR ON CALL LIGHTING REPAIR  
KANKAKEE COUNTY**

C-93-071-24

D-93-035-24



FULL SIZE PLANS HAVE BEEN PREPARED USING STANDARD ENGINEERING SCALES. REDUCED SIZED PLANS WILL NOT CONFORM TO STANDARD SCALES. IN MAKING MEASUREMENTS ON REDUCED PLANS, THE ABOVE SCALES MAY BE USED.

J.U.L.I.E.  
JOINT UTILITY LOCATION INFORMATION FOR EXCAVATION  
1-800-892-0123  
OR 811

DISTRICT 3 NO. (815)-434-6131  
PROJECT ENGINEER: JOE KANNEL, P.E.  
UNIT CHIEF: MOHAMED YOUSIF

CONTRACT NO. 66P20

STATE OF ILLINOIS  
DEPARTMENT OF TRANSPORTATION

SUBMITTED Dec 7 20 23  
*M. Ahmad*  
REGIONAL ENGINEER

February 2, 2024  
*S. E. A. ERS*  
ENGINEER OF DESIGN AND ENVIRONMENT

February 2, 2024  
*Steph M. Smith*  
DIRECTOR OF HIGHWAYS PROJECT IMPLEMENTATION

**PRINTED BY THE AUTHORITY  
OF THE STATE OF ILLINOIS**

**GENERAL NOTES**

THE LOCATIONS OF THE REPAIR AREAS SHALL BE DETERMINED BY THE ENGINEER.

REMOVAL OF DAMAGED MATERIALS SHALL INCLUDE DISMANTLING, LOADING, HAULING, AND DISPOSAL.

THE WORK SITE SHALL BE LEFT IN A SAFE AND ORDERLY CONDITION.

NO MATERIAL SHOULD BE LEFT ON OR NEAR THE ROADWAY.

ALL EXCAVATED MATERIAL, WHICH INCLUDES DIGGING OR GRADING OF ANY SOIL OR FILL MATERIAL, WITH THE EXCEPTION OF AGGREGATE FILLS, INCORPORATED WITHIN, THE IDOT RIGHT OF WAY DUE TO ENVIRONMENTAL DOCUMENTATION REQUIREMENTS.

ALL AREAS DISTURBED BY THE CONTRACTOR SHALL BE RESTORED WITH SEED OR SOD TO THE SATISFACTION OF THE ENGINEER. SEEDING OR SODDING SHALL NOT BE PERMITTED AT ANY TIME WHEN THE GROUND IS FROZEN, WET, OR IN AN UNTILLABLE CONDITION.

ANY WORK ORDER MAY BE CANCELLED AT THE ENGINEERS DISCRETION.

NO OVERNIGHT LANE CLOSURES WILL BE ALLOWED.

ANY REFERENCE TO A STANDARD IN THESE PLANS SHALL BE INTERPRETED TO MEAN THE EDITION AS INDICATED BY THE SUBNUMBER SHOWN IN THE LIST OF STANDARDS OR THE COPY INCLUDED IN THE PLANS.

THE CONTRACTOR IS ADVISED THAT THERE MAY BE PRESENCE OF DEPARTMENT OWNED UNDERGROUND ELECTRICAL CABLE WITHIN THE LIMITS OF THE PROPOSED IMPROVEMENT, THE CONTRACTOR SHALL REQUEST THE ILLINOIS DEPARTMENT OF TRANSPORTATION IN OTTAWA (815-434-8505) TO LOCATE THE UNDERGROUND FACILITIES, PROVIDING A MINIMUM OF 72 HOURS NOTICE. THE DEPARTMENT IS NOT A MEMBER OF THE JOINT UTILITY LOCATING INFORMATION FOR EXCAVATORS (JULIE) SYSTEM.

ALL DAMAGE TO DEPARTMENT OWNED UNDERGROUND FACILITIES, CAUSED BY THE CONTRACTOR SHALL BE REPAIRED TO THE SATISFACTION OF THE ENGINEER AND AT NO EXPENSE TO THE DEPARTMENT. THIS SHALL INCLUDE ALL TEMPORARY REPAIRS REQUIRED TO KEEP THE FACILITY OPERATIONAL WHILE MATERIAL IS BEING OBTAINED TO MAKE PERMANENT REPAIRS. SPLICING OF ELECTRIC CABLE WILL NOT BE ALLOWED. ELECTRIC CABLE SHALL BE REPLACED FROM POLE TO POLE OR CONTROLLER.

THE CONTRACTOR SHALL BE RESPONSIBLE FOR PROTECTING UTILITY PROPERTY FROM CONSTRUCTION OPERATIONS AS OUTLINED IN ARTICLE 107.39 OF THE STANDARD SPECIFICATIONS. THE J.U.L.I.E. NUMBER IS 1-800-892-0123. A MINIMUM OF 48 HOURS ADVANCE NOTICE IS REQUIRED.

**LIST OF ILLINOIS DOT HIGHWAY STANDARDS**

000001-08	STANDARD SYMBOLS, ABBREVIATIONS AND PATTERNS
001006	DECIMAL OF AN INCH AND OF A FOOT
701001-02	OFF-ROAD OPERATIONS 2L, 2W, MORE THAN 15' AWAY
701006-05	OFF-ROAD OPERATIONS 2L, 2W, 15' TO 24" FROM PAVEMENT EDGE
701101-05	OFF-ROAD OPERATIONS, MULTILANE, 15' TO 24" FROM PAVEMENT EDGE
701106-02	OFF-ROAD OPERATIONS, MULTILANE, MORE THAN 15' AWAY
701201-05	LANE CLOSURE, 2L, 2W, DAY ONLY, FOR SPEEDS ≥ 45 MPH
701206-05	LANE CLOSURE, 2L, 2W, NIGHT ONLY, FOR SPEEDS ≥ 45 MPH
701301-04	LANE CLOSURE, 2L, 2W, SHORT TIME OPERATIONS
701306-04	LANE CLOSURE, 2L, 2W, SLOW MOVING OPERATIONS DAY ONLY, FOR SPEEDS ≥ 45 MPH
701311-03	LANE CLOSURE, 2L, 2W, MOVING OPERATIONS - DAY ONLY
701400- 12	APPROACH TO LANE CLOSURE, FREEWAY/EXPRESSWAY
701401-13	LANE CLOSURE, FREEWAY/EXPRESSWAY
701406-13	LANE CLOSURE, FREEWAY/EXPRESSWAY, DAY OPERATIONS ONLY
701411-09	LANE CLOSURE, MULTILANE, AT ENTRANCE OR EXIT RAMP FOR SPEEDS ≥ 45 MPH
701421-08	LANE CLOSURE, MULTILANE, DAY OPERATIONS ONLY, FOR SPEEDS ≥ 45 MPH TO 55 MPH
701422-10	LANE CLOSURE, MULTILANE, FOR SPEEDS ≥ 45 MPH TO 55 MPH
701426-09	LANE CLOSURE, MULTILANE INTERMITTENT OR MOVING OPERATION, FOR SPEEDS ≥ 45 MPH
701427-05	LANE CLOSURE, MULTILANE INTERMITTENT OR MOVING OPERATION, FOR SPEEDS ≤ 40 MPH
701428-01	TRAFFIC CONTROL, SETUP AND REMOVAL, FREEWAY/EXPRESSWAY
701431-13	LANE CLOSURE, MULTILANE, UNDIVIDED WITH CROSSOVER, FOR SPEEDS ≥ 45 MPH TO 55 MPH
701446-11	TWO LANE CLOSURE, FREEWAY/EXPRESSWAY
701451-05	RAMP CLOSURE FREEWAY/EXPRESSWAY
701456-05	PARTIAL EXIT RAMP CLOSURE FREEWAY/EXPRESSWAY
701501-06	URBAN LANE CLOSURE, 2L, 2W, UNDIVIDED
701502-09	URBAN LANE CLOSURE 2L, 2W, WITH BIDIRECTIONAL LEFT TURN LANE
701601-09	URBAN LANE CLOSURE, MULTILANE, 1W OR 2W WITH NONTRAVERSABLE MEDIAN
701602-10	URBAN LANE CLOSURE, MULTILANE, 2W WITH BIDIRECTIONAL LEFT TURN LANE
701606-10	URBAN LANE CLOSURE, MULTILANE, 2W WITH MOUNTABLE MEDIAN
701701-10	URBAN LANE CLOSURE, MULTILANE INTERSECTION
701801-06	SIDEWALK, CORNER OR CROSSWALK CLOSURE
701901- 09	TRAFFIC CONTROL DEVICES
821101-02	LUMINAIRE WIRING IN POLE
838001-01	BREAKAWAY DEVICES
862001-01	UNINTERRUPTABLE POWER SUPPLY (UPS)
873001-02	TRAFFIC SIGNAL GROUNDING & BONDING
880001-01	SPAN WIRE MOUNTED SIGNALS AND FLASHING BEACON INSTALLATION
880006-01	TRAFFIC SIGNAL MOUNTING DETAILS

**COMMITMENTS**

NONE

STATE OF ILLINOIS  
DEPARTMENT OF TRANSPORTATION  
DISTRICT THREE  
AS BUILT INFORMATION

\_\_\_\_\_  
SUPERVISING CONSTRUCTION FIELD ENGINEER

\_\_\_\_\_  
RESIDENT ENGINEER / TECHNICIAN

START & END DATES  
OF CONSTRUCTION: \_\_\_\_\_

INSPECTORS: \_\_\_\_\_  
\_\_\_\_\_  
\_\_\_\_\_

MODEL - Detail  
 FILE NAME - p:\projects\dot\Documents\DOT Office\Bids\309D\309D\309D.dwg  
 PROJECT\309D\309D.dwg

USER NAME = Jon.Woodyer	DESIGNED -	REVISED -
	DRAWN -	REVISED -
PLOT SCALE = 100.000' / in.	CHECKED -	REVISED -
PLOT DATE = 11/30/2023	DATE -	REVISED -

**STATE OF ILLINOIS  
DEPARTMENT OF TRANSPORTATION**

**GENERAL NOTES AND HIGHWAY STANDARDS  
IDOT DISTRICT 3 ELECTRICAL MAINTENANCE CONTRACT**

SCALE: SHEET 1 OF 1 SHEETS STA. TO STA.

F.A. RTE.	SECTION	COUNTY	TOTAL SHEETS	SHEET NO.
VARIOUS	D3 LIGHTING REPAIR 2024-3	KANKAKEE	5	2
CONTRACT NO. 66P20				
ILLINOIS			FED. AID PROJECT	

MODEL: D:\in\h...  
 FILE NAME: P:\work\p\w\...  
 PROJECT: P:\work\p\w\...

CODE NO.	ITEM	UNIT	TOTAL QUANTITY	CONSTRUCTION CODE	
				STATE FUNDS	
				100%	
				ROADWAY	
				0021	KANKAKEE
82110007	LUMINAIRE, LED, ROADWAY, OUTPUT DESIGNATION G	EACH	1		1
82110008	LUMINAIRE, LED, ROADWAY, OUTPUT DESIGNATION H	EACH	1		1
82110015	LUMINAIRE, LED, HIGHMAST, OUTPUT DESIGNATION H	EACH	1		1
83800205	BREAKAWAY DEVICE, TRANSFORMER BASE, 15 INCH BOLT CIRCLE	EACH	1		1
83800650	BREAKAWAY DEVICE, COUPLING WITH STAINLESS STEEL SCREEN	EACH	4		4
85000200	MAINTENANCE OF EXISTING TRAFFIC SIGNAL INSTALLATION	EACH	2		2
85000500	MAINTENANCE OF EXISTING FLASHING BEACON INSTALLATION	EACH	8		8
87502480	TRAFFIC SIGNAL POST, GALVANIZED STEEL 14 FT.	EACH	1		1
87502500	TRAFFIC SIGNAL POST, GALVANIZED STEEL 16 FT.	EACH	1		1
88040070	SIGNAL HEAD, POLYCARBONATE, LED, 1-FACE, 3-SECTION, BRACKET MOUNTED	EACH	1		1
88040090	SIGNAL HEAD, POLYCARBONATE, LED, 1-FACE, 3-SECTION, MAST ARM MOUNTED	EACH	1		1
88040150	SIGNAL HEAD, POLYCARBONATE, LED, 1-FACE, 5-SECTION, BRACKET MOUNTED	EACH	1		1
88040160	SIGNAL HEAD, POLYCARBONATE, LED, 1-FACE, 5-SECTION, MAST ARM MOUNTED	EACH	1		1
88200510	TRAFFIC SIGNAL BACKPLATE, RETROREFLECTIVE	EACH	1		1

USER NAME = Jon.Woodyer	DESIGNED -	REVISED -
	DRAWN -	REVISED -
PLOT SCALE = 100.000' / in.	CHECKED -	REVISED -
PLOT DATE = 11/30/2023	DATE -	REVISED -

**STATE OF ILLINOIS  
DEPARTMENT OF TRANSPORTATION**

**SUMMARY OF QUANTITIES  
IDOT DISTRICT 3 ELECTRICAL MAINTENANCE CONTRACT**

SCALE: SHEET 1 OF 3 SHEETS STA. TO STA.

F.A. RTE.	SECTION	COUNTY	TOTAL SHEETS	SHEET NO.
VARIOUS	D3 LIGHTING REPAIR 2024-3	KANKAKEE	5	3
CONTRACT NO. 66P20				
ILLINOIS FED. AID PROJECT				

CODE NO.	ITEM	UNIT	TOTAL QUANTITY	CONSTRUCTION CODE	
				STATE FUNDS	
				100%	
				ROADWAY	
				0021	KANKAKEE
89502610	SIGNAL VISOR, TUNNEL TYPE, 12 INCH	EACH	1		1
X8005020	GFCI 20 AMP DUPLEX RECEPTACLE	EACH	1		1
X8000001	MAINTAIN EXISTING HIGHWAY LIGHTING	EACH	16		16
X8350003	MAINTENANCE OF EXISTING HIGH MAST LIGHT TOWERS	EACH	4		4
XP000001	JOURNEYMAN ELECTRICIAN	HOUR	225		225
XP000002	APPRENTICE ELECTRICIAN	HOUR	50		50
XP000003	JOURNEYMAN ELECTRICIAN (WEEKLY OVERTIME RATE)	HOUR	20		20
XP000004	JOURNEYMAN ELECTRICIAN (SATURDAY OVERTIME RATE)	HOUR	20		20
XP000005	JOURNEYMAN ELECTRICIAN (SUNDAY AND HOLIDAY OVERTIME RATE)	HOUR	10		10
XP000006	APPRENTICE ELECTRICIAN (WEEKLY OVERTIME RATE)	HOUR	20		20
XP000007	APPRENTICE ELECTRICIAN (SATURDAY OVERTIME RATE)	HOUR	20		20
XP000008	APPRENTICE ELECTRICIAN (SUNDAY AND HOLIDAY OVERTIME RATE)	HOUR	10		10
XP000009	PICK-UP TRUCK	HOUR	640		640
XP000010	BUCKET TRUCK (LENGTH LESS THAN 35 FEET)	HOUR	16		16

MODEL: D:\in\h...  
 FILE NAME: ...  
 ...

USER NAME = Jon.Woodyer	DESIGNED -	REVISED -
	DRAWN -	REVISED -
PLOT SCALE = 100,000' / in.	CHECKED -	REVISED -
PLOT DATE = 11/30/2023	DATE -	REVISED -

**STATE OF ILLINOIS**  
**DEPARTMENT OF TRANSPORTATION**

**SUMMARY OF QUANTITIES**  
**IDOT DISTRICT 3 ELECTRICAL MAINTENANCE CONTRACT**

F.A. RTE.	SECTION	COUNTY	TOTAL SHEETS	SHEET NO.
VARIOUS	D3 LIGHTING REPAIR 2024-3	KANKAKEE	5	4
CONTRACT NO. 66P20				
ILLINOIS FED. AID PROJECT				

SCALE: SHEET 2 OF 3 SHEETS STA. TO STA.

MODEL: D:\in\h  
 FILE NAME: p:\projects\2024\DOT Office\District 3\CRD Project\082624\CADD\082624-082624.dgn

CODE NO.	ITEM	UNIT	TOTAL QUANTITY	CONSTRUCTION CODE	
				STATE FUNDS	
				100%	
				ROADWAY	0021
				KANKAKEE	
XP000011	BUCKET TRUCK (LENGTH 35 TO 65 FEET)	HOUR	32		32
XP000015	DIGGER DERRICK	HOUR	1		1
XP000103	KTQ 5A FUSE	EACH	12		12
XP000106	BUCHANAN FUSEHOLDER KIT	EACH	5		5
XP000188	HANDHOLE, COVER ONLY (NEENAH R-6660-JP)	EACH	1		1
XP000200	LOAD SWITCH, NEMA	EACH	3		3
Z0025615	FURNISH AND INSTALL METAL SCREEN	EACH	8		8
Z0033068	TRAFFIC SIGNAL BATTERY BACKUP SYSTEM	EACH	1		1

USER NAME = Jon.Woodyer	DESIGNED -	REVISED -
	DRAWN -	REVISED -
PLOT SCALE = 100,000' / in.	CHECKED -	REVISED -
PLOT DATE = 11/30/2023	DATE -	REVISED -

**STATE OF ILLINOIS  
 DEPARTMENT OF TRANSPORTATION**

**SUMMARY OF QUANTITIES  
 IDOT DISTRICT 3 ELECTRICAL MAINTENANCE CONTRACT**

SCALE: SHEET 3 OF 3 SHEETS STA. TO STA.

F.A. RTE.	SECTION	COUNTY	TOTAL SHEETS	SHEET NO.
VARIOUS	D3 LIGHTING REPAIR 2024-3	KANKAKEE	5	5
CONTRACT NO. 66P20				
ILLINOIS FED. AID PROJECT				