

F.A.S. RTE.	SECTION	COUNTY	TOTAL SHEETS	SHEET NO.
826	21-00226-00-RS	EDWARDS	18	1
		ILLINOIS	CONTRACT NO. 95957	

INDEX OF SHEETS

04-26-2024 LETTING ITEM 220

- 1 COVER SHEET
 - 2 TYPICAL SECTIONS, SUMMARY OF QUANTITIES, AND GENERAL NOTES
 - 3-11 MISCELLANEOUS DETAILS AND SCHEDULES
 - 12-18 DETAILS OF INTERSECTIONS AND SIDE ROADS
- HIGHWAY STANDARDS: SEE SHEET 2

UTILITIES

RURAL WABASH WATER DISTRICT
P.O. BOX 55; LANCASTER, IL 62855
PHONE: (618)-665-3311

NORRIS ELECTRIC COOP
8543 NORTH STATE HWY 150 130 SOUTH; NEWTON, IL 62448

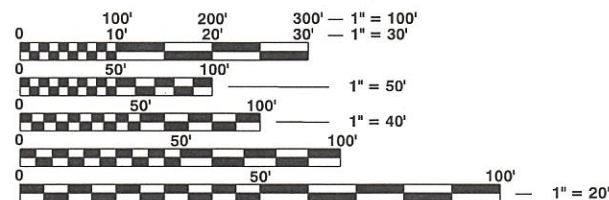
FONTIER COMMUNICATION
200 WEST CHERRY STREET; CARM, IL 62821
PHONE: (618)382-2887

NEW WAVE COMMUNICATIONS
1 MONTGOMERY PLAZA, 4TH FLOOR; SIKESTON, MO 63801
PHONE: (618)-283-9630

PROJECT ENGINEER: BEN BLAND
PROJECT MANAGER: BEN BLAND



Know what's below.
Call before you dig.



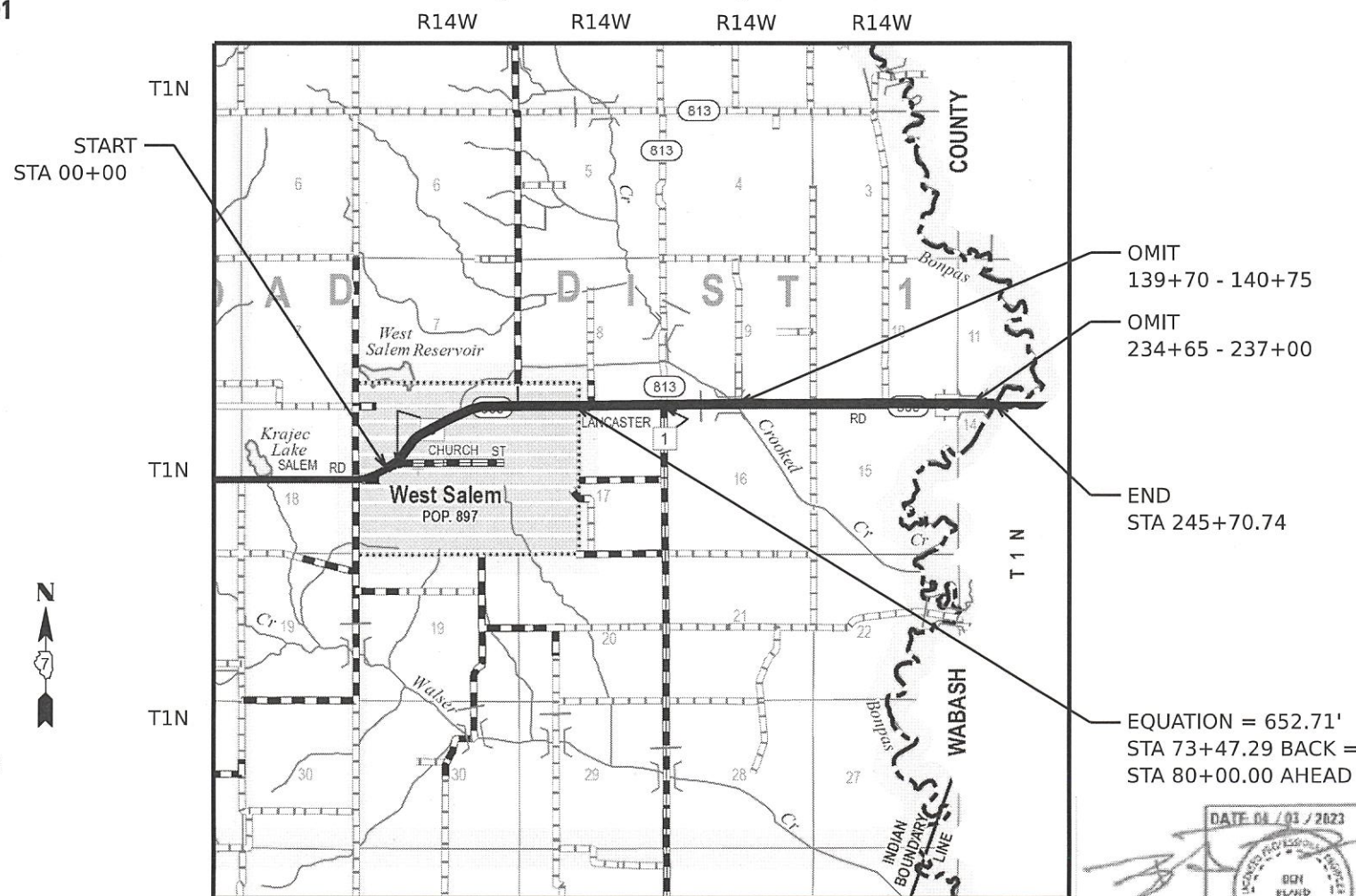
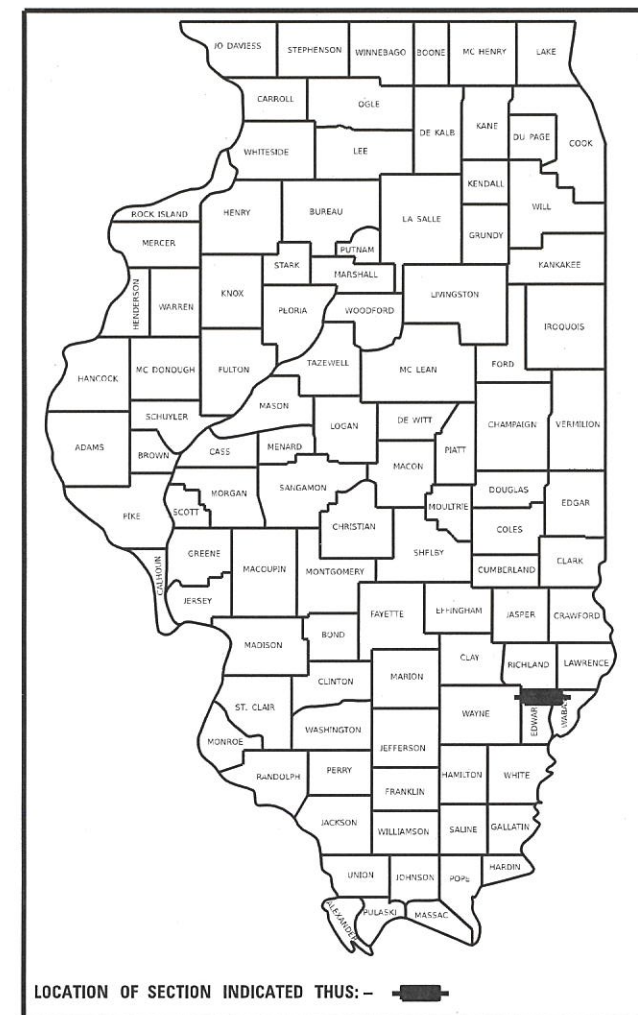
FULL SIZE PLANS HAVE BEEN PREPARED USING STANDARD ENGINEERING SCALES. REDUCED SIZED PLANS WILL NOT CONFORM TO STANDARD SCALES. IN MAKING MEASUREMENTS ON REDUCED PLANS, THE ABOVE SCALES MAY BE USED.

CONTRACT NO.: 95957
DESIGN CLASS - MAJOR COLLECTOR
CURRENT A.D.T. = 700 DESIGN
SPEED = 50 MPH

STATE OF ILLINOIS DEPARTMENT OF TRANSPORTATION DIVISION OF HIGHWAYS

PLANS FOR PROPOSED SURFACE TRANSPORTATION RURAL PROJECT

EDWARDS COUNTY
F.A.S. ROUTE 800
SECTION 21-00071-00-RS
C-97-084-23
CONTRACT NO. 95957
PROJECT # A9JI(752)



- OMIT 139+70 - 140+75
- OMIT 234+65 - 237+00
- END STA 245+70.74
- EQUATION = 652.71'
STA 73+47.29 BACK =
STA 80+00.00 AHEAD

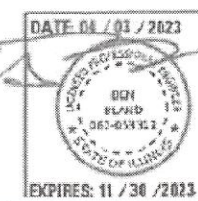
STATE OF ILLINOIS
DEPARTMENT OF TRANSPORTATION

SUBMITTED: 03-09-24
COUNTY ENGINEER: [Signature]

03/20 24
DISTRICT SEVEN ENGINEER OF LOCAL ROADS & STREETS: [Signature]

03/20 24
REGION FOUR ENGINEER: [Signature]

**PRINTED BY THE AUTHORITY
OF THE STATE OF ILLINOIS**



HAMPTON, LENZINI AND RENWICK, INC.
323 WEST THIRD STREET, P.O. BOX 160
MT. CARMEL, ILLINOIS 62869
ILLINOIS PROFESSIONAL DESIGN FIRM
LS / PE / SE CORP. 184.000950

NET LENGTH = 23,578.03 FT = 4.47 MI
GROSS LENGTH = 23,918.03 FT = 4.53 MI

**SCHEDULE OF AGGREGATE
SHOULDERS, TYPE B**

START STA	END STA	LOCATION	OMISSION (FT)	LENGTH (FT)	WIDTH (FT)	VOLUME (CU YD)	QUANTITY (TON)
MAINLINE							
0+0.00	6+29.11	LT	46.0	583.1	3.0	7.5	13.5
6+82.37	28+55.87	LT	169.0	2004.5	3.0	25.6	46.1
29+32.26	41+76.50	LT	32.9	1211.3	3.0	15.5	27.9
42+46.46	56+32.84	LT	81.2	1305.2	3.0	16.7	30.1
56+98.07	73+47.29	LT	209.5	1439.7	3.0	18.4	33.2
80+00.00	89+49.73	LT	39.9	909.8	3.0	11.6	20.9
90+22.98	115+75.02	LT	213.6	2338.4	3.0	29.8	53.7
116+45.52	139+70.00	LT	126.0	2198.5	3.0	28.0	50.4
140+75.00	142+73.22	LT	0.0	198.2	3.0	2.6	4.7
143+36.89	169+68.35	LT	35.2	2596.3	3.0	33.1	59.6
170+44.28	195+69.96	LT	170.0	2355.7	3.0	30.0	54.0
196+59.32	234+65.00	LT	121.0	3684.7	3.0	47.0	84.6
237+00.00	245+70.74	LT	0.0	870.7	3.0	11.1	20.0
0+0.00	2+56.54	RT	84.7	171.8	3.0	2.2	4.0
3+99.90	6+27.42	RT	0.0	227.5	3.0	2.9	5.3
7+16.88	16+27.85	RT	212.0	699.0	3.0	8.9	16.1
16+94.03	27+94.11	RT	199.1	901.0	3.0	11.5	20.7
29+04.98	41+47.22	RT	60.9	1181.3	3.0	15.1	27.2
42+39.59	56+38.79	RT	97.1	1302.1	3.0	16.6	29.9
57+01.48	73+47.29	RT	287.0	1358.8	3.0	17.3	31.2
80+00.00	115+60.40	RT	354.1	3206.3	3.0	40.9	73.7
116+55.58	139+70.00	RT	56.4	2258.0	3.0	28.8	51.9
140+75.00	169+81.90	RT	51.0	2855.9	3.0	36.4	65.6
170+34.16	234+65.00	RT	364.1	6066.7	3.0	77.3	139.2
237+00.00	245+70.74	RT	0.0	870.7	3.0	11.1	20.0
MAINLINE TOTAL:							983.5

AGGREGATE SHOULDERS TOTAL: 1020.0

**SCHEDULE OF AGGREGATE
FOR TEMPORARY ACCESS**

START STA	END STA	LOCATION	OMISSION (FT)	LENGTH (FT)	WIDTH (FT)	VOLUME (CU YD)	QUANTITY (TON)
INTERSECTIONS							
6+29.11	6+82.37	LT	0.0	44.1	3.0	0.6	1.1
28+55.87	29+32.26	LT	0.0	80.3	3.0	1.1	2.0
41+76.50	42+46.46	LT	0.0	72.9	3.0	1.0	1.8
56+32.84	56+98.07	LT	0.0	51.1	3.0	0.7	1.3
89+49.73	90+22.98	LT	0.0	75.8	3.0	1.0	1.8
115+75.02	116+45.52	LT	0.0	81.8	3.0	1.1	2.0
142+73.22	143+36.89	LT	0.0	87.1	3.0	1.2	2.2
169+68.35	170+44.28	LT	0.0	71.0	3.0	1.0	1.8
195+69.96	196+59.32	LT	0.0	90.6	3.0	1.2	2.2
2+56.54	3+99.90	RT	0.0	244.0	3.0	3.2	5.8
6+27.42	7+16.88	RT	0.0	93.0	3.0	1.2	2.2
16+27.85	16+94.03	RT	0.0	99.0	3.0	1.3	2.4
27+94.11	29+04.98	RT	0.0	95.0	3.0	1.3	2.4
41+47.22	42+39.59	RT	0.0	82.0	3.0	1.1	2.0
56+38.79	57+01.48	RT	0.0	48.0	3.0	0.7	1.3
115+60.40	116+55.58	RT	0.0	92.0	3.0	1.2	2.2
169+81.90	170+34.16	RT	0.0	38.0	3.0	0.5	0.9
INTERSECTION TOTAL:							36.0

AGGREGATE FOR TEMPORARY ACCESS					
STATION	LOCATION	LENGTH (IN)	WIDTH (FT)	DEPTH (INCH)	TEMPORARY AGGREGATE (TONS)
86+36	AR	288	7.33	6	6.84
116+17	LT	288	3.83	6	3.57
118+26	AR	288	8.67	6	8.09
143+30	AR	288	6.67	6	6.22
156+62	AR	288	10.33	6	9.64
170+09	LT	288	6	6	5.60
188+35	AR	288	4.83	6	4.51
TOTAL					45.0

**SCHEDULE OF
TEMPORARY RAMPS**

TEMPORARY RAMP				
STATION	LOCATION	LENGTH (FT)	WIDTH (FT)	TEMPORARY RAMP (SQ YD)
VARIABLE	AR	5	22	12.2
VARIABLE	AR	5	22	12.2
VARIABLE	AR	5	22	12.2
VARIABLE	AR	5	22	12.2
VARIABLE	AR	5	22	12.2
VARIABLE	AR	5	22	12.2
VARIABLE	AR	5	22	12.2
VARIABLE	AR	5	22	12.2
VARIABLE	AR	5	22	12.2
VARIABLE	AR	5	22	12.2
TOTAL				122.0

MODEL: 410021\MAMES
FILE NAME: SHELBY

HAMPTON, LENZINI AND RENWICK, INC.
300 SHEPARD DRIVE
ELGIN, ILLINOIS 60123
ILLINOIS PROFESSIONAL DESIGN FIRM
LS / PE / SE CORP. 194-000559

USER NAME = \$USERS	DESIGNED -	REVISED -
	DRAWN - LTH	REVISED -
PLOT SCALE = \$SCALE\$	CHECKED -	REVISED -
PLOT DATE = \$DATES	DATE -	REVISED -

**STATE OF ILLINOIS
DEPARTMENT OF TRANSPORTATION**

MISCELLANEOUS SCHEDULES AND DETAILS

SCALE: SHEET 1 OF 16 SHEETS STA. TO STA.

F.A. RTE.	SECTION	COUNTY	TOTAL SHEETS	SHEET NO.
	21-00071-00-R5	EDWARDS	18	3
PROJECT #: A9JII(752)		CONTRACT NO. 95957		
C-97-084-23		ILLINOIS FED. AID PROJECT		

**SCHEDULE OF HOT-MIX
ASPHALT SURFACE REMOVAL -
BUTT JOINTS**

BUTT JOINTS						
STATION BEGIN	STATION END	ROUTE	LOCATION	LENGTH	WIDTH	SURFACE REMOVAL
				(FT)	(FT)	(SQ YD)
MAINLINE						
0+0.00	0+50.00	1	AR	50	VARIES	148.0
139+20.00	139+70.00	2	AR	50	22	123.0
140+75.00	141+25.00	2	AR	50	22	123.0
234+15.00	234+65.00	2	AR	50	22	123.0
237+00.00	237+50.00	2	AR	50	22	123.0
245+20.74	245+70.74	2	AR	50	VARIES	117.0
INTERSECTIONS						
2+56.54	3+99.90	1	RT	VARIES	VARIES	227.00
6+27.42	7+16.88	1	RT	VARIES	VARIES	147.00
6+29.11	6+82.37	1	LT	VARIES	VARIES	63.00
16+27.85	16+89.91	1	RT	VARIES	VARIES	132.00
27+94.11	29+04.98	1	RT	VARIES	VARIES	211.00
28+55.87	29+32.26	1	LT	VARIES	VARIES	144.00
41+47.22	42+39.59	1	RT	VARIES	VARIES	141.00
41+76.50	42+46.46	1	LT	VARIES	VARIES	154.00
56+32.84	56+98.07	1	LT	VARIES	VARIES	62.00
56+38.79	57+01.48	1	RT	VARIES	VARIES	65.00
89+49.73	90+22.98	2	LT	VARIES	VARIES	124.00
115+75.02	116+45.52	2	LT	VARIES	VARIES	95.00
115+39.26	116+55.58	2	RT	VARIES	VARIES	180.00
142+73.22	143+36.89	2	LT	VARIES	VARIES	107.00
169+68.35	170+44.28	2	LT	VARIES	VARIES	80.00
169+81.90	170+34.16	2	RT	VARIES	VARIES	28.00
195+69.96	196+59.32	2	LT	VARIES	VARIES	140.00
TOTAL:						2857.0

**SCHEDULE OF BITUMINOUS
MATERIALS - TACK COAT**

START STA	END STA	LOCATION	LENGTH (FT)	WIDTH (FT)	AREA (SF)	APPLICATION RATE (LB/SQ FT)	QUANTITY (POUND)
MAINLINE							
0+0.00	73+47.29		7347.29	22.0	161640.4	0.050	8082.0
80+00.00	139+70.00		5970.00	22.0	131340.0	0.050	6567.0
140+75.00	234+65.00		9390.00	22.0	206580.0	0.050	10329.0
237+00.00	245+70.74		870.74	22.0	19156.3	0.050	957.8
0+0.00	73+47.29		7347.29	22.0	161640.4	0.025	4041.0
80+00.00	139+70.00		5970.00	22.0	131340.0	0.025	3283.5
140+75.00	234+65.00		9390.00	22.0	206580.0	0.025	5164.5
237+00.00	245+70.74		870.74	22.0	19156.3	0.025	478.9
INTERSECTIONS							
2+56.54	3+99.90	RT	VARIES	VARIES	2043.00	0.050	102.2
6+27.42	7+16.88	RT	VARIES	VARIES	1323.00	0.050	66.2
6+29.11	6+82.37	LT	VARIES	VARIES	567.00	0.050	28.4
16+27.85	16+89.91	RT	VARIES	VARIES	1188.00	0.050	59.4
27+94.11	29+04.98	RT	VARIES	VARIES	1899.00	0.050	95.0
28+55.87	29+32.26	LT	VARIES	VARIES	1296.00	0.050	64.8
41+47.22	42+39.59	RT	VARIES	VARIES	1269.00	0.050	63.5
41+76.50	42+46.46	LT	VARIES	VARIES	1386.00	0.050	69.3
56+32.84	56+98.07	LT	VARIES	VARIES	558.00	0.050	27.9
56+38.79	57+01.48	RT	VARIES	VARIES	585.00	0.050	29.3
89+49.73	90+22.98	LT	VARIES	VARIES	1116.00	0.050	55.8
115+75.02	116+45.52	LT	VARIES	VARIES	855.00	0.050	42.8
115+39.26	116+55.58	RT	VARIES	VARIES	1620.00	0.050	81.0
142+73.22	143+36.89	LT	VARIES	VARIES	963.00	0.050	48.2
169+68.35	170+44.28	LT	VARIES	VARIES	720.00	0.050	36.0
169+81.90	170+34.16	RT	VARIES	VARIES	252.00	0.050	12.6
195+69.96	196+59.32	LT	VARIES	VARIES	1260.00	0.050	63.0
TOTAL							39849.0

MODEL & MODEL NAMES
FILE NAMES: SEE LIST

HAMPTON, LENZINI AND RENWICK, INC.
380 SHEPARD DRIVE
ELGIN, ILLINOIS 60123
ILLINOIS PROFESSIONAL DESIGN FIRM
LS / PE / SE CORP. 194-000559

USER NAME = \$USERS
DESIGNED -
DRAWN - LTH
PLOT SCALE = \$SCALE\$
PLOT DATE = \$DATES

REVISOR -
REVISOR -
CHECKED -
DATE -

REVISOR -
REVISOR -
REVISOR -
REVISOR -

**STATE OF ILLINOIS
DEPARTMENT OF TRANSPORTATION**

MISCELLANEOUS SCHEDULES AND DETAILS

SCALE: SHEET 2 OF 16 SHEETS STA. TO STA.

F.A. RTE.	SECTION	COUNTY	TOTAL SHEETS	SHEET NO.
	21-00071-00-R5	EDWARDS	18	4
PROJECT #: A9JII(752)		CONTRACT NO. 95957		
C-97-084-23		ILLINOIS FED. AID PROJECT		

**SCHEDULE OF AGGREGATE
SURFACE COURSE, TYPE B**

STATION	LOCATION	AREA AGG (SF)	VOLUME (CU YD)	QUANTITY (TON)
0+65.00	RT	1359	12.58	25.80
1+45.00	LT	419.5	3.88	7.97
4+33.00	LT	215.4	1.99	4.09
6+64.00	LT	155.4	1.44	2.95
7+85.00	LT	440.8	4.08	8.37
10+20.00	RT	585	5.42	11.11
11+22.00	LT	385.9	3.57	7.33
12+13.00	RT	624.3	5.78	11.86
14+92.00	LT	637.9	5.91	12.11
17+45.00	LT	323.4	2.99	6.14
18+11.00	RT	174.6	1.62	3.32
22+32.00	RT	603.7	5.59	11.46
22+84.00	RT	524.7	4.86	9.96
23+02.00	LT	560	5.19	10.63
24+00.00	RT	3616.7	33.49	68.66
33+57.00	LT	221.1	2.05	4.20
34+49.00	RT	409.7	3.79	7.78
44+16.00	LT	106	0.98	2.02
44+83.00	LT	155.2	1.44	2.95
52+31.00	RT	225.9	2.09	4.29
55+16.00	RT	326.1	3.02	6.19
55+47.00	LT	388	3.59	7.37
58+98.00	LT	224.8	2.08	4.27
59+29.00	RT	371.7	3.44	7.06
60+85.00	LT	227.7	2.11	4.33
61+74.00	RT	306.7	2.84	5.83
62+48.00	RT	547.8	5.07	10.40
62+58.00	LT	314.7	2.91	5.98
64+18.00	LT	193.8	1.79	3.68
66+78.00	RT	412.4	3.82	7.83
66+86.00	LT	440.3	4.08	8.36
68+22.00	LT	333.7	3.09	6.34
68+46.00	RT	322	2.98	6.12
70+07.00	RT	363	3.36	6.90
71+61.00	RT	395.7	3.66	7.52

72+41.00	LT	335.6	3.11	6.38
73+10.00	RT	342.2	3.17	6.50
73+24.00	LT	391.8	3.63	7.44
93+30.00	LT	873.2	8.09	16.58
84+10.00	RT	305.1	2.83	5.80
92+76.00	LT	1780.6	16.49	33.80
93+63.00	RT	840.2	7.78	15.95
94+46.00	RT	364.6	3.38	6.93
96+82.00	RT	703.8	6.52	13.36
96+83.00	LT	265.7	2.46	5.05
99+43.00	RT	863.9	8.00	16.40
103+53.00	LT	400.5	3.71	7.61
106+41.00	RT	643.9	5.96	12.23
106+42.00	LT	343.1	3.18	6.52
107+64.00	RT	679.4	6.29	12.90
120+31.00	RT	454	4.20	8.62
123+10.00	LT	277.3	2.57	5.27
130+95.00	LT	395.8	3.66	7.52
132+69.00	LT	449.9	4.17	8.54
137+18.00	RT	383.9	3.55	7.29
138+89.00	LT	823.4	7.62	15.63
149+66.00	RT	535.5	4.96	10.17
156+21.00	RT	525.08	4.86	9.97
156+25.00	LT	387	3.58	7.35
163+88.00	LT	416.5	3.86	7.91
177+72.00	LT	2355.1	21.81	44.71
179+74.00	LT	669.2	6.20	12.71
183+15.00	RT	518.9	4.80	9.85
186+91.00	LT	392.1	3.63	7.45
188+81.00	RT	653	6.05	12.40
196+24.00	RT	497.7	4.61	9.45
197+05.00	RT	332.60	3.08	6.32
198+73.00	RT	687.10	6.36	13.05
202+61.00	RT	605.60	5.61	11.50
205+91.00	LT	367.80	3.41	6.99
209+28.00	LT	324.10	3.00	6.16
212+69.00	RT	713.50	6.61	13.55
214+90.00	LT	461.60	4.27	8.77
221+78.00	RT	631.50	5.85	11.99
222+32.00	LT	344.50	3.19	6.54
234+17.00	LT	497.10	4.60	9.44
TOTAL				774.0

**SCHEDULE OF
GUARDRAILS**

START STATION	END STATION	STATION	LOCATION	GUARDRAIL POST VERTICAL ADJUSTMENT (EACH)	VERTICAL ADJUSTMENT OF GUARDRAIL (FOOT)	TRAFFIC BARRIER TERMINAL, TYPE 1 (SPECIAL) TANGENT (EACH)
18+80.28	21+30.19		LT	42	254	
		18+80.28	LT			1
		21+30.19	LT			1
18+90.52	21+30.16		RT	40	239	
		18+90.52	RT			1
		21+30.16	RT			1
TOTAL:				82	493	4

MODEL: R400ELNAMES
FILE NAME: SHELBY

HAMPTON, LENZINI AND RENWICK, INC.
300 SHEPARD DRIVE
ELGIN, ILLINOIS 60123
ILLINOIS PROFESSIONAL DESIGN FIRM
LSJ / PE / SE CORP. 194-000559

USER NAME = \$USERS
DESIGNED -
DRAWN - LTH
PLOT SCALE = \$SCALES\$
PLOT DATE = \$DATES

REVISOR -
REVISOR -
CHECKED -
DATE -

REVISOR -
REVISOR -
REVISOR -
REVISOR -

**STATE OF ILLINOIS
DEPARTMENT OF TRANSPORTATION**

MISCELLANEOUS SCHEDULES AND DETAILS

SCALE: SHEET 3 OF 16 SHEETS STA. TO STA.

F.A. RTE.	SECTION	COUNTY	TOTAL SHEETS	SHEET NO.
	21-00071-00-R5	EDWARDS	18	5
PROJECT #: A9JII(752)		CONTRACT NO. 95957		
C-97-084-23	ILLINOIS	FED. AID PROJECT		

**SCHEDULE OF
INCIDENTAL HOT-MIX
ASPHALT RESURFACING**

STATION	LOCATION	AREA HMA SURFACE (SF)	VOLUME (SY-IN)	INCIDENTAL HMA (TON)
0+65.00	RT	171.9	57.30	3.21
1+45.00	LT	73.3	24.44	1.37
4+33.00	LT	123.6	41.20	2.31
6+64.00	LT	38.3	12.77	0.72
7+85.00	LT	65.6	21.87	1.23
8+08.00	RT	1038	346.00	19.38
10+20.00	RT	208.6	69.54	3.90
10+76.00	RT	695.6	231.87	12.99
11+22.00	LT	281.8	93.94	5.27
12+13.00	RT	68.1	22.70	1.28
12+47.00	RT	55.1	18.37	1.03
14+69.00	RT	1594	531.34	29.76
14+92.00	LT	142	47.34	2.66
17+45.00	LT	51.4	17.14	0.96
18+11.00	RT	60.6	20.20	1.14
22+32.00	RT	86	28.67	1.61
22+84.00	RT	75.8	25.27	1.42
23+02.00	LT	82.8	27.60	1.55
24+00.00	RT	242.1	80.70	4.52
33+57.00	LT	140.5	46.84	2.63
34+49.00	RT	180.2	60.07	3.37
37+87.00	RT	585	195.00	10.92
39+29.00	LT	521.6	173.87	9.74
42+93.00	RT	489.1	163.04	9.14
44+16.00	LT	156.3	52.10	2.92

44+83.00	LT	195.8	65.27	3.66
52+31.00	RT	115.6	38.54	2.16
55+16.00	RT	96.9	32.30	1.81
55+47.00	LT	76.4	25.47	1.43
58+98.00	LT	51.4	17.14	0.96
59+29.00	RT	84.5	28.17	1.58
60+49.00	RT	180.8	60.27	3.38
60+85.00	LT	42.1	14.04	0.79
61+74.00	RT	38.1	12.70	0.72
62+48.00	RT	121	40.34	2.26
62+58.00	LT	81	27.00	1.52
64+18.00	LT	28.4	9.47	0.54
66+78.00	RT	58.8	19.60	1.10
66+86.00	LT	108.7	36.24	2.03
68+22.00	LT	69.8	23.27	1.31
68+46.00	RT	57	19.00	1.07
70+07.00	RT	40.3	13.44	0.76
71+61.00	RT	187.2	62.40	3.50
72+41.00	LT	33.5	11.17	0.63
73+10.00	RT	124.8	41.60	2.33
73+24.00	LT	34.3	11.44	0.65
81+95.00	RT	723.7	241.24	13.51
93+30.00	LT	83.5	27.84	1.56
84+10.00	RT	62.2	20.74	1.17
87+91.00	RT	53.2	17.74	1.00
92+76.00	LT	738.9	246.30	13.80
93+63.00	RT	105.1	35.04	1.97
94+46.00	RT	35.7	11.90	0.67
96+82.00	RT	101.7	33.90	1.90
96+83.00	LT	34.4	11.47	0.65
99+43.00	RT	112.1	37.37	2.10
103+53.00	LT	240.2	80.07	4.49

106+41.00	RT	196	65.34	3.66
106+42.00	LT	46.8	15.60	0.88
107+64.00	RT	103	34.34	1.93
120+31.00	RT	155.7	51.90	2.91
123+10.00	LT	58.8	19.60	1.10
130+95.00	LT	461.7	153.90	8.62
132+69.00	LT	71.5	23.84	1.34
137+18.00	RT	54.1	18.04	1.02
138+89.00	LT	59.3	19.77	1.11
149+66.00	RT	51.5	17.17	0.97
156+21.00	RT	69.1	23.04	1.30
156+25.00	LT	39.9	13.30	0.75
163+88.00	LT	39	13.00	0.73
177+73.00	LT	218.6	72.87	4.09
178+14.00	RT	124.4	41.47	2.33
179+74.00	LT	88.6	29.54	1.66
183+15.00	RT	81.9	27.30	1.53
186+91.00	LT	48.3	16.10	0.91
187+35.00	RT	154.6	51.54	2.89
188+81.00	RT	334.3	111.44	6.25
196+24.00	RT	84.9	28.30	1.59
197+05.00	RT	35.4	11.80	0.67
198+73.00	RT	368.3	122.77	6.88
202+61.00	RT	46.5	15.50	0.87
205+91.00	LT	49.2	16.40	0.92
209+28.00	LT	29.3	9.77	0.55
212+69.00	RT	53.7	17.90	1.01
214+90.00	LT	67.1	22.37	1.26
221+78.00	RT	46.7	15.57	0.88
222+32.00	LT	30.6	10.20	0.58
234+17.00	LT	83.7	27.90	1.57
TOTAL				275.0

MODEL: 41001\HAMMES
FILE NAME: S1E1E1

**SCHEDULE OF MAIN LINE
HOT-MIX ASPHALT
BINDER COURSE, IL-9.5FG, N70**

START STA	END STA	OMISSION (FT)	LENGTH (FT)	LOCATION	WIDTH (FT)	THICKNESS (IN)	AREA (SY)	QUANTITY (TON)
0+0.00	73+47.29	0.00	7347.29	RT	11.00	1.500	8981.00	831.0
0+0.00	73+47.29	0.00	7347.29	LT	11.00	1.500	8981.00	831.0
80+00.00	245+70.74	340.00	16230.74	RT	11.00	1.500	19838.00	1834.0
80+00.00	245+70.74	340.00	16230.74	LT	11.00	1.500	19838.00	1834.0
TOTAL								5330.0

**SCHEDULE OF SIDE ROADS
HOT-MIX ASPHALT
SURFACE COURSE, IL-9.5
MIX "C", N70**

START STA	END STA	LOCATION	AREA (SF)	VOLUME (CF)	QUANTITY (TON)
2+56.54	3+99.90	RT	2043.00	510.75	38.14
6+27.42	7+16.88	RT	1323.00	330.75	24.70
6+29.11	6+82.37	LT	567.00	141.75	10.58
16+27.85	16+89.91	RT	1188.00	297.00	22.18
27+94.11	29+04.98	RT	1899.00	474.75	35.45
28+55.87	29+32.26	LT	1296.00	324.00	24.19
41+47.22	42+39.59	RT	1269.00	317.25	23.69
41+76.50	42+46.46	LT	1386.00	346.50	25.87
56+32.84	56+98.07	LT	558.00	139.50	10.42
56+38.79	57+01.48	RT	585.00	146.25	10.92
89+49.73	90+22.98	LT	1116.00	279.00	20.83
115+75.02	116+45.52	LT	855.00	213.75	15.96
115+39.26	116+55.58	RT	1620.00	405.00	30.24
142+73.22	143+36.89	LT	963.00	240.75	17.98
169+68.35	170+44.28	LT	720.00	180.00	13.44
169+81.90	170+34.16	RT	252.00	63.00	4.70
195+69.96	196+59.32	LT	1260.00	315.00	23.52
TOTAL					353.0

**SCHEDULE OF MAIN LINE
HOT-MIX ASPHALT
SURFACE COURSE, IL-9.5
MIX "C", N70**

START STA	END STA	OMISSION (FT)	LENGTH (FT)	LOCATION	WIDTH (FT)	THICKNESS (IN)	AREA (SY)	QUANTITY (TON)
0+0.00	73+47.29	0.00	7347.29	RT	11.00	1.500	8981.00	755.0
0+0.00	73+47.29	0.00	7347.29	LT	11.00	1.500	8981.00	755.0
80+00.00	245+70.74	340.00	16230.74	RT	11.00	1.500	19838.00	1667.0
80+00.00	245+70.74	340.00	16230.74	LT	11.00	1.500	19838.00	1667.0
TOTAL								4844.0

MODEL: MODELNAME\$
FILE NAME: \$FILE\$

SCHEDULE OF PAINT PAVEMENT MARKINGS

PAVEMENT MARKING SCHEDULE					
LOCATION			PAINT PAVEMENT MARKING - LINE 4"		
			SOLID		SKIP DASH
STA START	STA END	LOCATION	WHITE FOOT	YELLOW FOOT	YELLOW FOOT
EDGE LINES - WHITE					
0+0.00	6+29.11	LT	630.0		
6+29.11	6+82.37	LT - INTERSECTION	45.0		
6+82.37	28+55.87	LT	2174.0		
28+55.87	29+32.26	LT - INTERSECTION	81.0		
29+32.26	41+76.50	LT	1245.0		
41+76.50	42+46.46	LT - INTERSECTION	75.0		
42+46.46	56+32.84	LT	1387.0		
56+32.84	56+98.07	LT - INTERSECTION	47.0		
56+98.07	73+47.29	LT	1650.0		
80+00.00	89+49.73	LT	950.0		
89+49.73	90+22.98	LT - INTERSECTION	77.0		
90+22.98	115+75.02	LT	2553.0		
115+75.02	116+45.52	LT - INTERSECTION	85.0		
116+45.52	139+70.00	LT	2325.0		
140+75.00	142+73.22	LT	199.0		
142+73.22	143+36.89	LT - INTERSECTION	88.0		
143+36.89	169+68.35	LT	2632.0		
169+68.35	170+44.28	LT - INTERSECTION	72.0		
170+44.28	195+69.96	LT	2526.0		
195+69.96	196+59.32	LT - INTERSECTION	91.0		
196+59.32	234+65.00	LT	3806.0		
237+00.00	245+70.74	LT	871.0		
0+0.00	0+34.51	RT	35.0		
0+34.51	1+21.61	RT - INTERSECTION	87.0		
1+21.61	2+56.54	RT	135.0		
2+56.54	3+99.90	RT - INTERSECTION	172.0	73.0	
3+99.90	6+27.42	RT	228.0		
6+27.42	7+16.88	RT - INTERSECTION	93.0		
7+16.88	16+27.85	RT	911.0		
16+27.85	16+94.03	RT - INTERSECTION	103.0		
16+94.03	27+94.11	RT	1101.0		
27+94.11	29+04.98	RT - INTERSECTION	95.0		
29+04.98	37+67.60	RT	863.0		
37+67.60	38+10.95	RT - INTERSECTION	60.0		
38+10.95	41+47.22	RT	337.0		
41+47.22	42+39.59	RT - INTERSECTION	82.0		
42+39.59	56+38.79	RT	1400.0		
56+38.79	57+01.48	RT - INTERSECTION	48.0		
57+01.48	73+47.29	RT	1646.0		
80+00.00	115+60.40	RT	3561.0		
115+60.40	116+55.58	RT - INTERSECTION	92.0		
116+55.58	139+70.00	RT	2315.0		
140+75.00	234+65.00	RT	9390.0		
237+00.00	245+70.74	RT	871.0		

LOCATION			PAINT PAVEMENT MARKING - LINE 4"		
			SOLID		SKIP DASH
STA START	STA END	LOCATION	WHITE FOOT	YELLOW FOOT	YELLOW FOOT
NO PASSING ZONE - DOUBLE YELLOW					
0+85.19	13+23.11			2476.0	
23+12.03	28+54.12			1085.0	
40+50.97	72+66.37			6431.0	
95+35.22	96+51.38			233.0	
193+19.18	196+51.04			664.0	
SKIP DASH - YELLOW					
0+0.00	0+85.19				22.0
33+62.93	37+60.21				100.0
83+14.75	87+06.97				99.0
104+38.70	139+70.00				883.0
140+75.00	185+38.44				1116.0
204+57.26	234+65.00				752.0
237+00.00	245+70.74				218.0
SKIP DASH/NO PASSING - YELLOW					
13+23.11	23+12.03	NO PASSING EB		989.0	248.0
28+54.12	33+62.93	NO PASSING WB		509.0	128.0
37+60.21	40+50.97	NO PASSING EB		291.0	73.0
72+66.37	73+47.29	NO PASSING WB		81.0	21.0
80+00.00	83+14.75	NO PASSING WB		315.0	79.0
87+06.97	95+35.22	NO PASSING EB		829.0	208.0
96+51.38	104+38.70	NO PASSING WB		788.0	197.0
185+38.44	193+19.18	NO PASSING EB		781.0	196.0
196+51.04	204+57.26	NO PASSING WB		807.0	202.0

TOTAL	43,059.0	16,352.0	4,542.0
TOTAL	63,953.0 FT		

MODEL: 4/00/ELMAMES
FILE NAME: SHELBY

HAMPTON, LENZINI AND RENWICK, INC.
380 SHEPARD DRIVE
ELGIN, ILLINOIS 60123
ILLINOIS PROFESSIONAL DESIGN FIRM
LS / PE / SE CORP. 184-000555

USER NAME = \$USERS
DESIGNED -
DRAWN - LTH
PLOT SCALE = \$SCALES
PLOT DATE = \$DATES

REVISOR -
REVISOR -
CHECKED -
DATE -

REVISOR -
REVISOR -
REVISOR -
REVISOR -

**STATE OF ILLINOIS
DEPARTMENT OF TRANSPORTATION**

MISCELLANEOUS SCHEDULES AND DETAILS

SCALE: SHEET 6 OF 16 SHEETS STA. TO STA.

F.A. RTE.	SECTION	COUNTY	TOTAL SHEETS	SHEET NO.
	21-00071-00-R5	EDWARDS	18	8
PROJECT #: A9JII(752)			CONTRACT NO. 95957	
C-97-084-23 ILLINOIS FED. AID PROJECT				

SCHEDULE OF PIPE CULVERTS AND FLARED END SECTIONS

STATION	LOCATION	UPSTREAM STATION	UPSTREAM LOCATION	UPSTREAM FLOWLINE ELEVATION	DOWNSTREAM STATION	DOWNSTREAM LOCATION	DOWNSTREAM FLOWLINE ELEVATION
86+36	AR	86+38.97	44.34' RT	436.522	86+34.16	53.96' LT	433.841
116+17	LT	115+98.35	25.3' LT	418.956	116+38.09	25.16' LT	418.716
118+26	AR	118+04.86	26.05' RT	416.685	118+49.67	28.10' LT	416.357
143+30	AR	143+31.91	33.97' LT	405.672	143+27.9	33.06' RT	404.3087
156+62	AR	156+62.44	24.88' LT	407.024	156+63.01	27.58' RT	406.437
170+09	LT	170+26.70	35.39' LT	408.064	169+91.33	37.27' LT	407.567
188+35	AR	188+35.9	25.93' LT	440.586	188+34.75	23.83' RT	440.344

STATION	LOCATION	PIPE CULVERT REMOVAL (FEET)	TRENCH BACKFILL (CU YD)	PIPE CULVERTS CLASS A TYPE 2 18" (FEET)	PIPE CULVERTS CLASS A TYPE 2 24" (FEET)	PIPE CULVERTS CLASS A TYPE 3 42" (FEET)	PIPE CULVERTS CLASS A TYPE 2 42" EQUIV (FEET)	PIPE CULVERTS CLASS A TYPE 4 48" (FEET)	PIPE CULVERTS CLASS A TYPE 2 54" EQUIV (FEET)	PIPE CULVERTS CLASS A TYPE 2 84" (FEET)
86+36	AR	99	50.2					99		
116+17	LT	40	21.1		40					
118+26	AR	71	22.9						71	
143+30	AR	68	16.6			68				
156+62	AR	53	21.6							53
170+09	LT	36	7.8				36			
188+35	AR	52	34.9	52						
TOTAL		419	176	52	40	68	36	99	71	53

STATION	LOCATION	PRECAST REINFORCED CONCRETE FLARED END SECTION 18" (EACH)	PRECAST REINFORCED CONCRETE FLARED END SECTION 24" (EACH)	PRECAST REINFORCED CONCRETE FLARED END SECTION 42" (EACH)	PRECAST REINFORCED CONCRETE FLARED END SECTION 48" (EACH)	PRECAST REINFORCED CONCRETE FLARED END SECTION 84" (EACH)	PRECAST REINFORCED CONCRETE FLARED END SECTION 42" EQUIVALENT (EACH)	PRECAST REINFORCED CONCRETE FLARED END SECTION 54" EQUIVALENT (EACH)
86+36	AR				2			
116+17	LT		2					
118+26	AR							2
143+30	AR			2				
156+62	AR					2		
170+09	LT						2	
188+35	AR	2						
TOTAL		2	2	2	2	2	2	2

MODEL: A90DELNAME\$
FILE NAME: S1E1\$

HAMPTON, LENZINI AND RENWICK, INC.
380 SHEPARD DRIVE
ELGIN, ILLINOIS 60123
ILLINOIS PROFESSIONAL DESIGN FIRM
LS / PE / SE CORP. 194.000059

USER NAME = \$USERS
DESIGNED -
DRAWN - LTH
CHECKED -
DATE -
PLOT SCALE = \$SCALE\$
PLOT DATE = \$DATE\$

REVISD -
REVISD -
REVISD -
REVISD -

REVISD -
REVISD -
REVISD -
REVISD -

**STATE OF ILLINOIS
DEPARTMENT OF TRANSPORTATION**

MISCELLANEOUS SCHEDULES AND DETAILS

SCALE: SHEET 7 OF 16 SHEETS STA. TO STA.

F.A. RTE.	SECTION	COUNTY	TOTAL SHEETS	SHEET NO.
	21-00071-00-R5	EDWARDS	18	9
PROJECT #: A9J1(752)		CONTRACT NO. 95957		
C-97-084-23		ILLINOIS FED. AID PROJECT		

**SCHEDULE OF
HOT-MIX ASPHALT
TOTALS**

INCIDENTAL HOT MIX ASPHALT RESURFACING	
ITEM	TONS
FIELD/PRIVATE ENTRANCES	275.00
TOTAL	275.00

HMA BINDER COURSE, IL-9.5FG, N70	
ITEM	TONS
MAINLINE	5330.00
TOTAL	5330.00

HMA SURFACE COURSE, IL-9.5, MIX "C", N70	
ITEM	TONS
MAINLINE	4844.00
SIDEROAD AREAS	353.00
TOTAL	5197.00

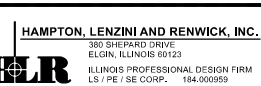
**SCHEDULE OF
SHORT TERM PAVEMENT
MARKINGS AND SHORT TERM
PAVEMENT MARKING REMOVAL**

STA START	STA END	OMISSION	LENGTH (FT)	MARKING LENGTH (FT)	REMOVAL (SQ FT)
0+0.00	73+47.29	0.00	7347.29	1470.0	980.0
80+00.00	245+70.74	340.00	16230.74	3247.0	2165.0
TOTALS				4717.0	3145.0

**SCHEDULE OF
PATCHING**

STATION	LOCATION	CLASS D PATCHES	CLASS D PATCHES	CLASS D PATCHES
		TYPE II 6 INCH (SQ YD)	TYPE III 6 INCH (SQ YD)	TYPE IV 6 INCH (SQ YD)
86+36	AR		19.6	
116+17	LT	10.2		
118+26	AR		23.1	
143+30	AR		17.8	
156+62	AR			27.6
170+09	LT		16	
188+35	AR		12.9	
TOTAL		11	90	28

MODEL: 4100/ELMAMES
FILE NAME: SELE1



USER NAME = \$USERS
PLOT SCALE = \$SCALE\$
PLOT DATE = \$DATES

DESIGNED -
DRAWN - LTH
CHECKED -
DATE -

REVISED -
REVISED -
REVISED -
REVISED -

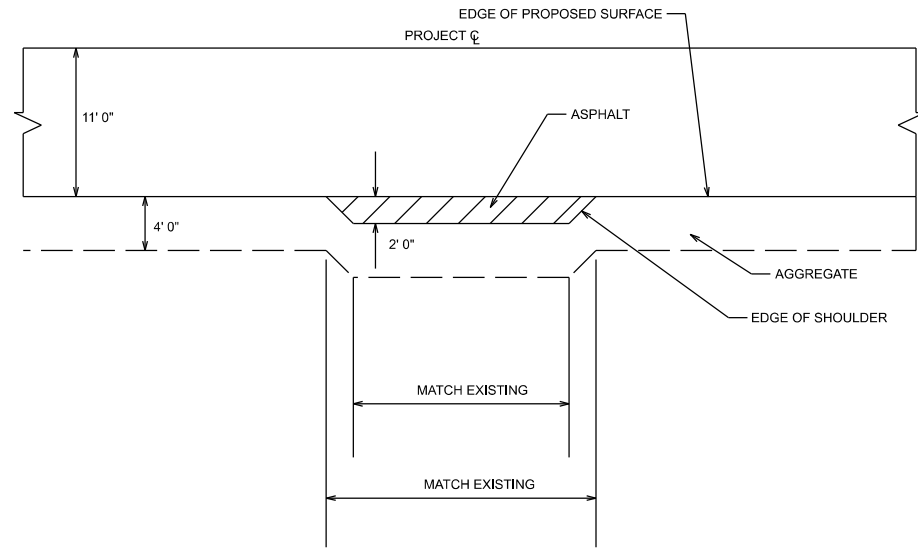
**STATE OF ILLINOIS
DEPARTMENT OF TRANSPORTATION**

MISCELLANEOUS SCHEDULES AND DETAILS

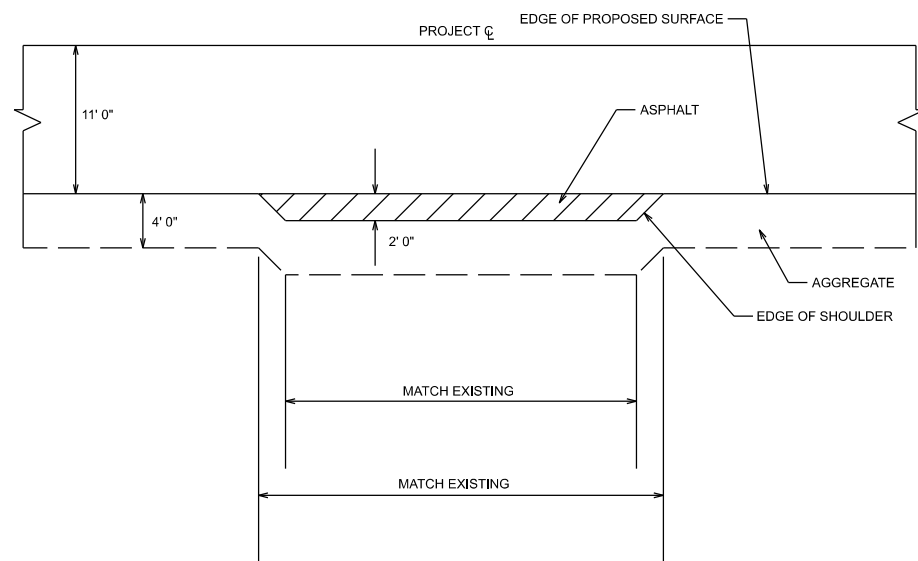
SCALE: SHEET 8 OF 16 SHEETS STA. TO STA.

F.A. RTE.	SECTION	COUNTY	TOTAL SHEETS	SHEET NO.
	21-00071-00-R5	EDWARDS	18	10
PROJECT #: A9JII(752)		CONTRACT NO. 95957		
C-97-084-23	ILLINOIS	FED. AID PROJECT		

DETAIL OF PRIVATE ENTRANCE

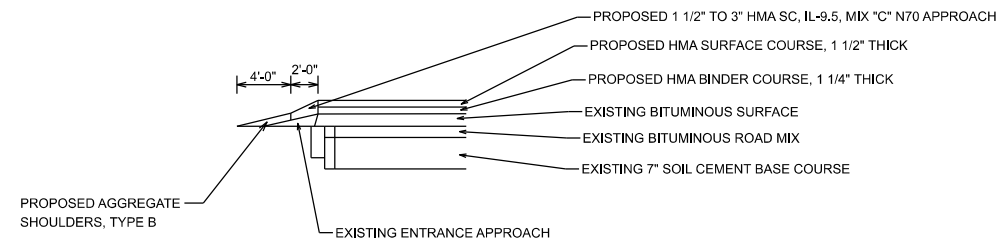


DETAIL OF FIELD ENTRANCE



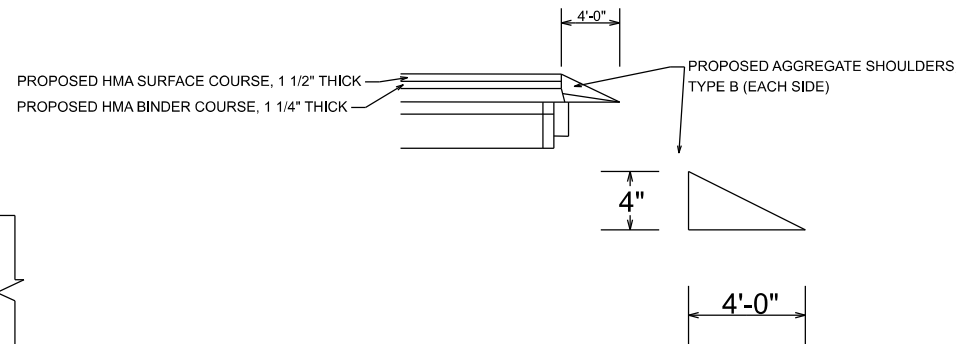
NOTE: GRAVEL FIELD ENTRANCES AND/OR PRIVATE ENTRANCES ARE TO BE INCLUDED IN AGGREGATE SURFACE COURSE, TYPE B QUANTITIES

PRIVATE & FIELD ENTRANCE APPROACH DETAIL

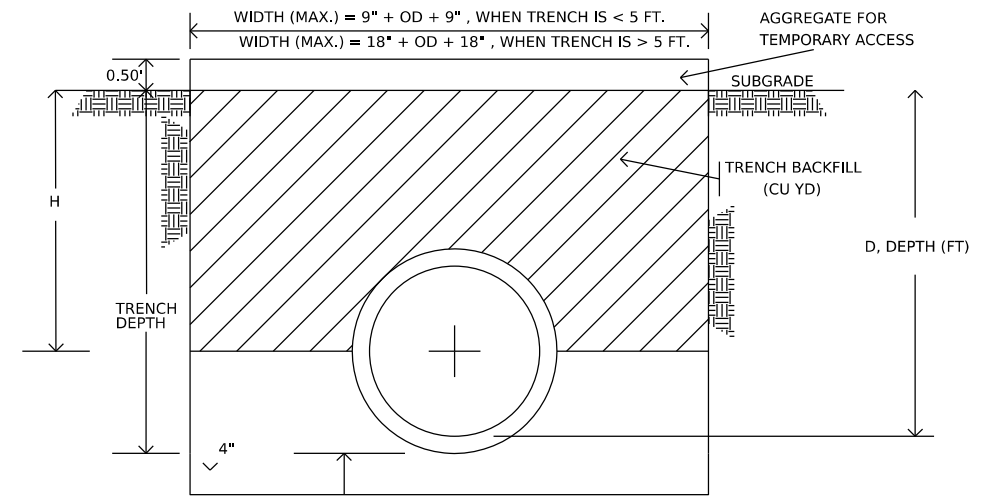


NOTE: THE 2' AREA FROM THE EDGE OF SURFACE, AS SHOWN ABOVE, SHALL BE HOT-MIX ASPHALT SURFACE COURSE, IL-9.5, MIX "C", N70 FOR THE PRIVATE ENTRANCES AND THE FIELD ENTRANCES. THIS QUANTITY IS INCLUDED IN QUANTITY FOR HOT-MIX ASPHALT SURFACE COURSE, IL-9.5, MIX "C", N70.

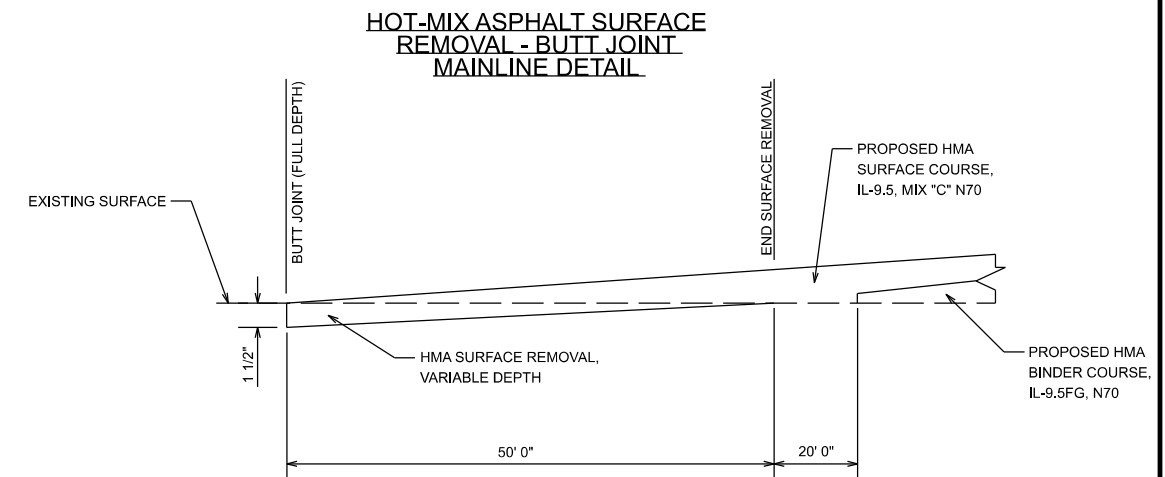
AGGREGATE SHOULDER DETAIL



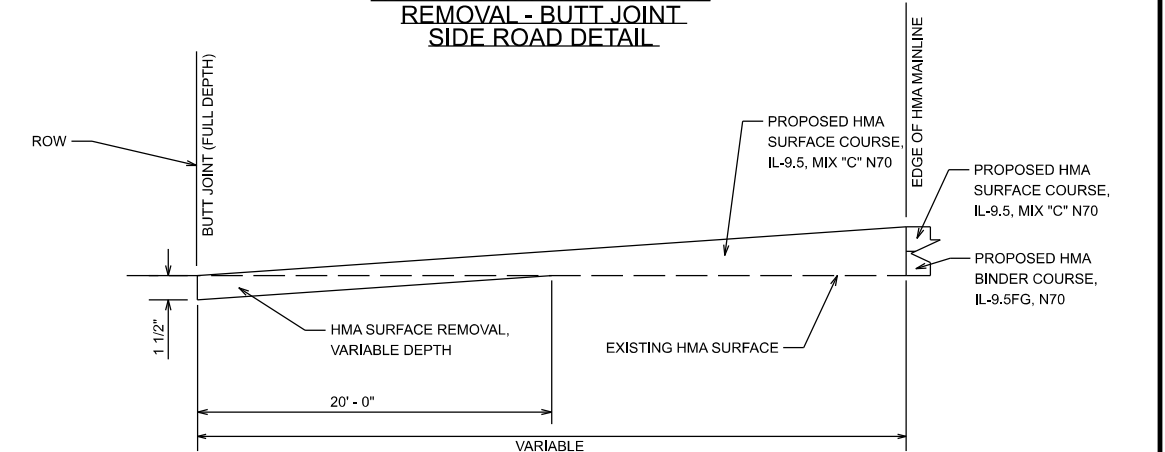
TRENCH BACKFILL



HOT-MIX ASPHALT SURFACE REMOVAL - BUTT JOINT DETAIL



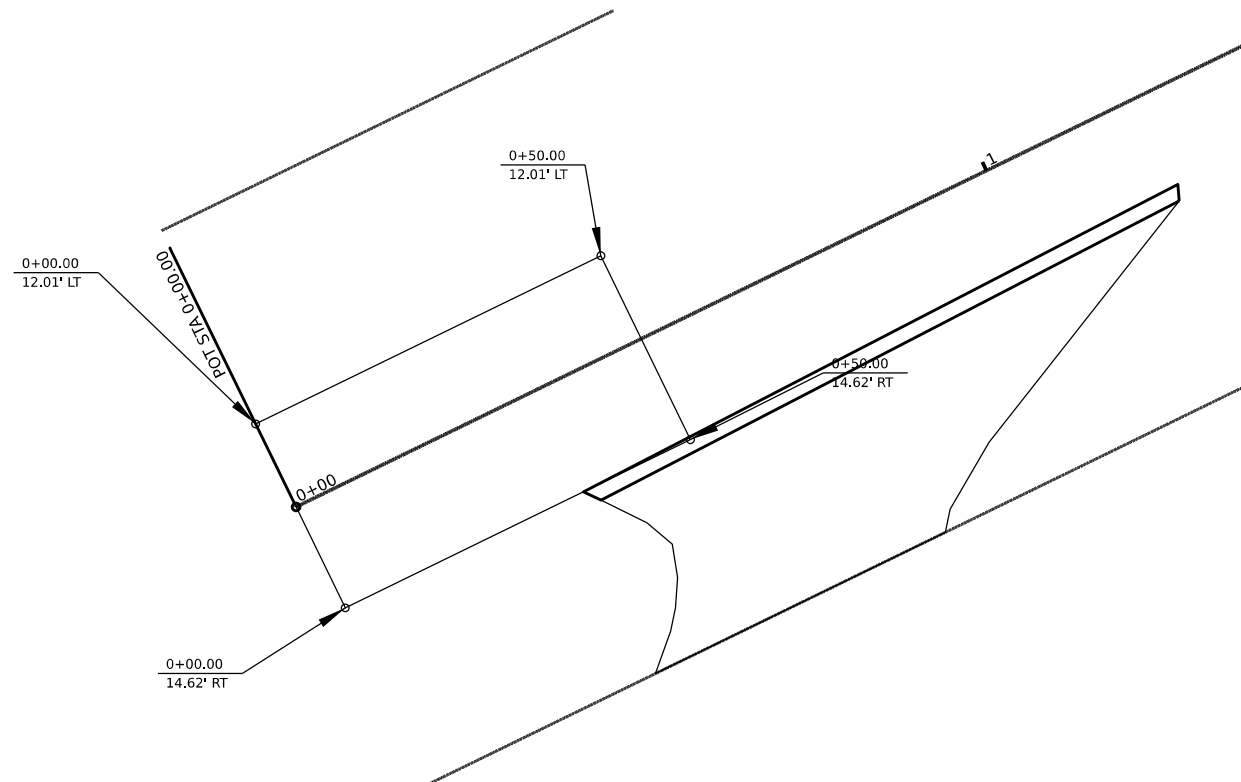
HOT-MIX ASPHALT SURFACE REMOVAL - BUTT JOINT SIDE ROAD DETAIL



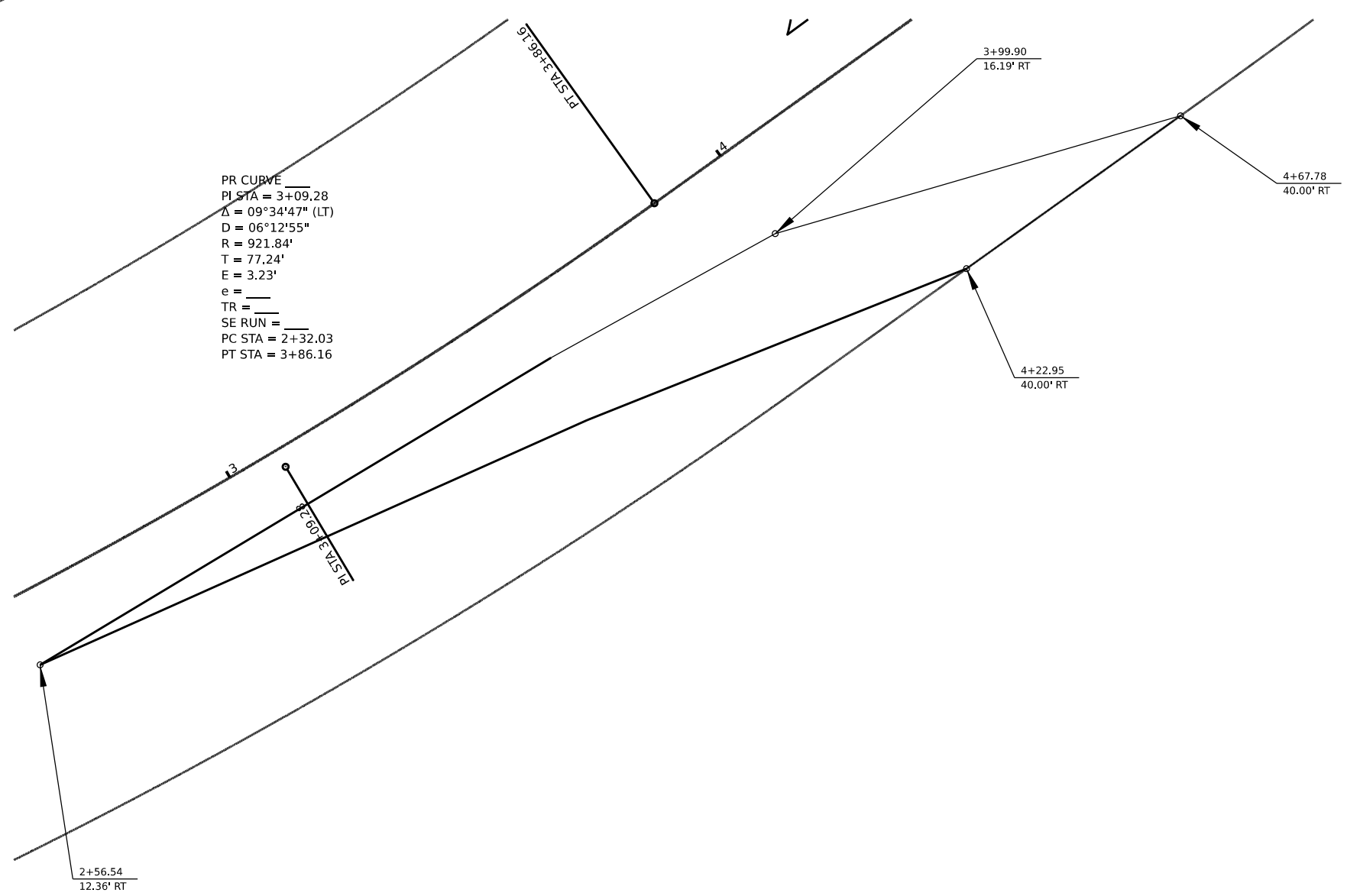
MODEL: 4/08/2014
FILE NAME: SELEP

HAMPTON, LENZINI AND RENWICK, INC. 580 SHEPARD DRIVE ELGIN, ILLINOIS 60123 ILLINOIS PROFESSIONAL DESIGN FIRM L.S./P.E./S.E. CORP. 194-000559	USER NAME = \$USERS	DESIGNED -	REVISED -	STATE OF ILLINOIS DEPARTMENT OF TRANSPORTATION	MISCELLANEOUS SCHEDULES AND DETAILS		F.A. RTE.	SECTION	COUNTY	TOTAL SHEETS	SHEET NO.
	PLOT SCALE = \$SCALE\$	DRAWN - LTH	REVISED -				21-00071-00-R5	EDWARDS	18	11	
	PLOT DATE = \$DATES	CHECKED -	REVISED -				PROJECT #: A9JII(752)		CONTRACT NO. 95957		
		DATE -	REVISED -				C-97-084-23	ILLINOIS	FED. AID PROJECT		
SCALE: SHEET 9 OF 16 SHEETS STA. TO STA.											

DETAIL OF BUTT JOINT
00+00 - 50+00



DETAIL OF BUTT JOINT AT
INTERSECTION 2+56.54 - 3+99.90 RT



MODEL: 41001\PLANAMES
FILE NAME: SELE1

HAMPTON, LENZINI AND RENWICK, INC.
 300 SHEPARD DRIVE
 ELGIN, ILLINOIS 60123
 ILLINOIS PROFESSIONAL DESIGN FIRM
 LS / PE / SE CORP. 184-000559

USER NAME = \$USERS
 PLOT SCALE = \$SCALE\$
 PLOT DATE = \$DATES

DESIGNED -
 DRAWN - LTH
 CHECKED -
 DATE -

REVISED -
 REVISED -
 REVISED -
 REVISED -

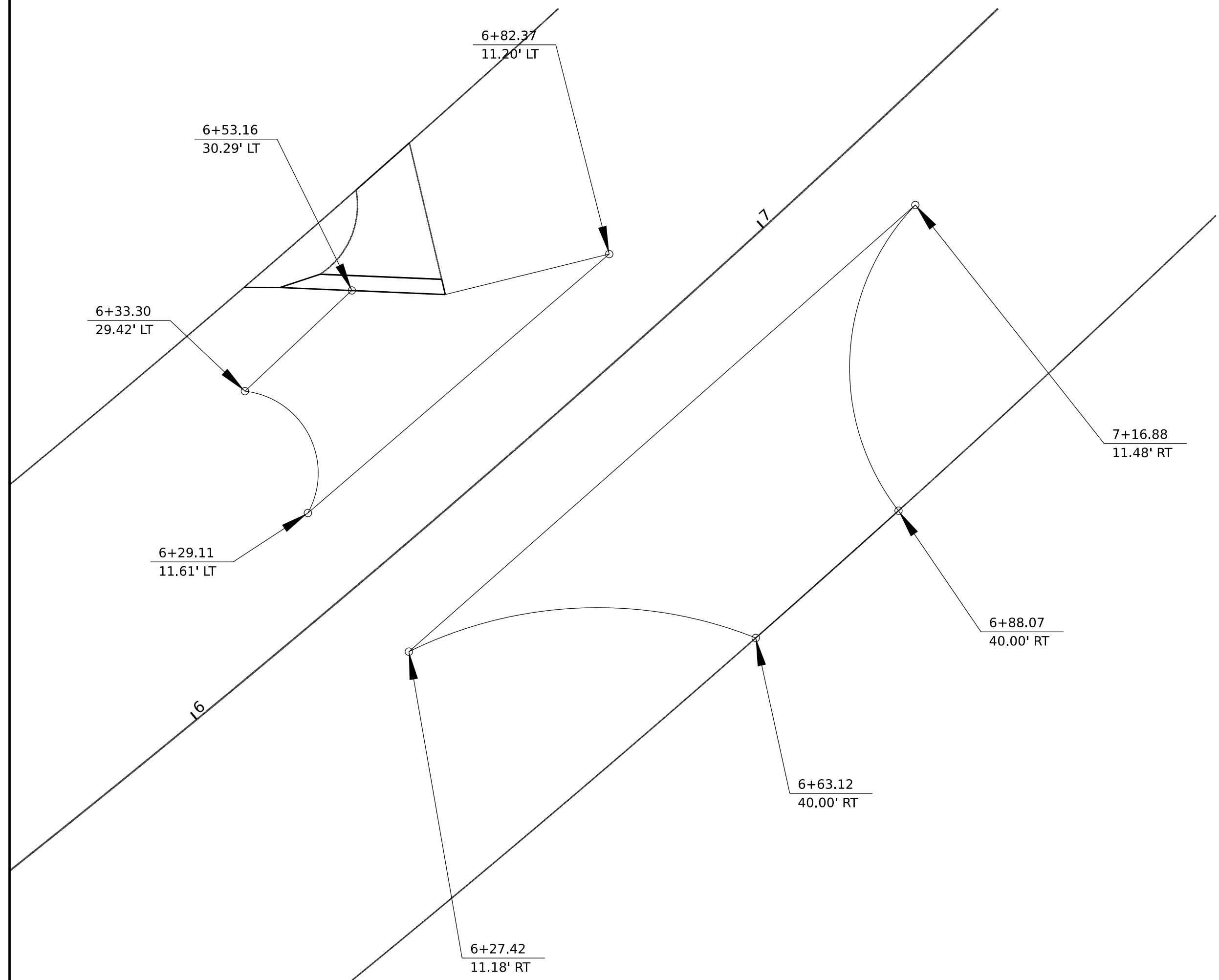
STATE OF ILLINOIS
DEPARTMENT OF TRANSPORTATION

MISCELLANEOUS SCHEDULES AND DETAILS

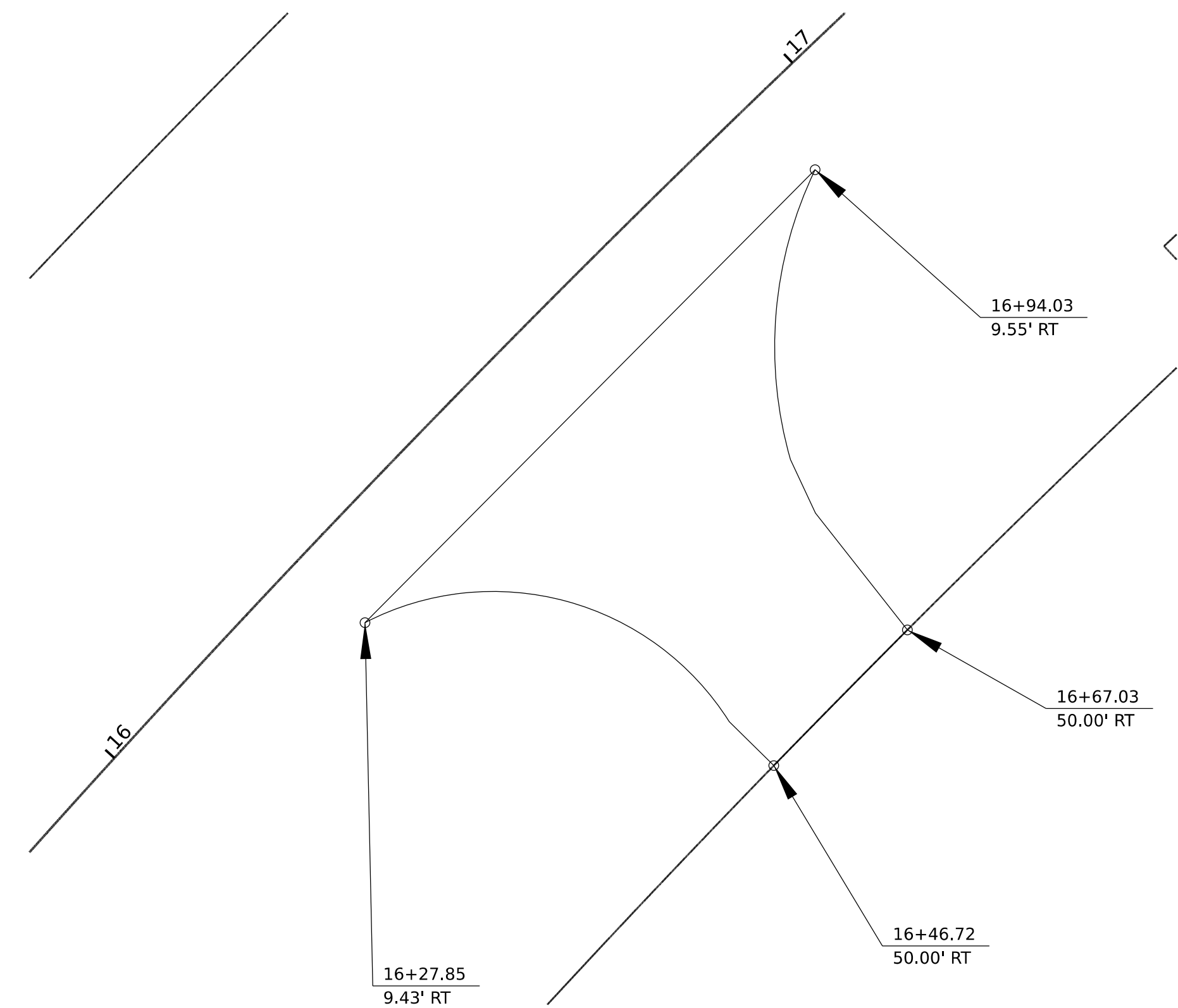
SCALE: SHEET 10 OF 16 SHEETS STA. TO STA.

F.A. RTE.	SECTION	COUNTY	TOTAL SHEETS	SHEET NO.
	21-00071-00-R5	EDWARDS	18	12
PROJECT #: A9JII(752)		CONTRACT NO. 95957		
C-97-084-23	ILLINOIS	FED. AID PROJECT		

**DETAIL OF BUTT JOINTS
AT INTERSECTIONS
6+27.42 - 7+16.88
6+29.11 - 6+82.37**



**DETAIL OF BUTT JOINTS
AT INTERSECTIONS
16+27.85 - 16+89.91**



MODEL: \$MODELNAME\$
FILE NAME: \$FILE\$

HAMPTON, LENZINI AND RENWICK, INC.
380 SHEPARD DRIVE
ELGIN, ILLINOIS 60123
ILLINOIS PROFESSIONAL DESIGN FIRM
LS / PE / SE CORP. 184.000559

USER NAME = \$USERS\$
PLOT SCALE = \$SCALE\$
PLOT DATE = \$DATES\$

DESIGNED -
DRAWN - LTH
CHECKED -
DATE -

REVISED -
REVISED -
REVISED -
REVISED -

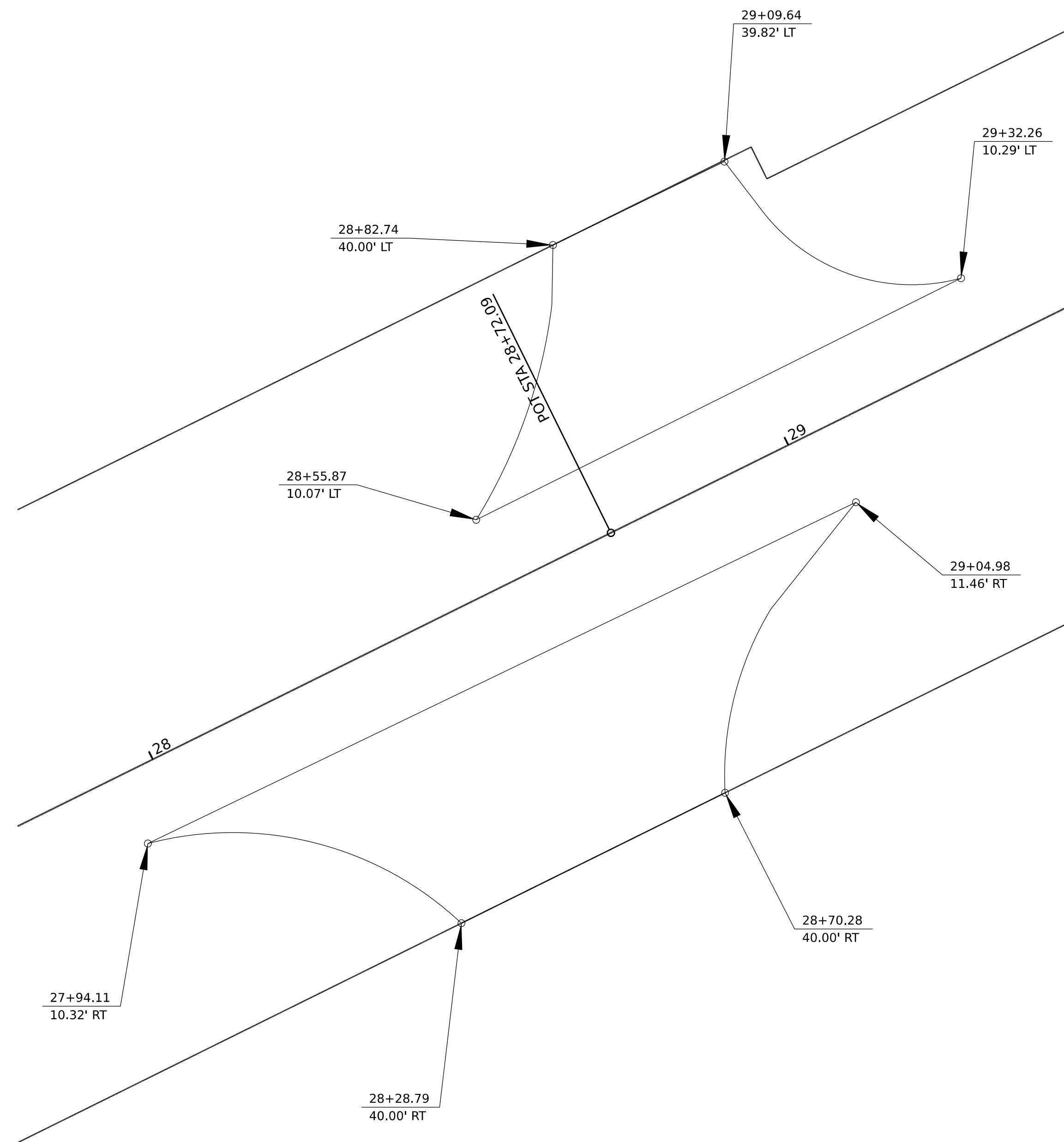
**STATE OF ILLINOIS
DEPARTMENT OF TRANSPORTATION**

MISCELLANEOUS SCHEDULES AND DETAILS

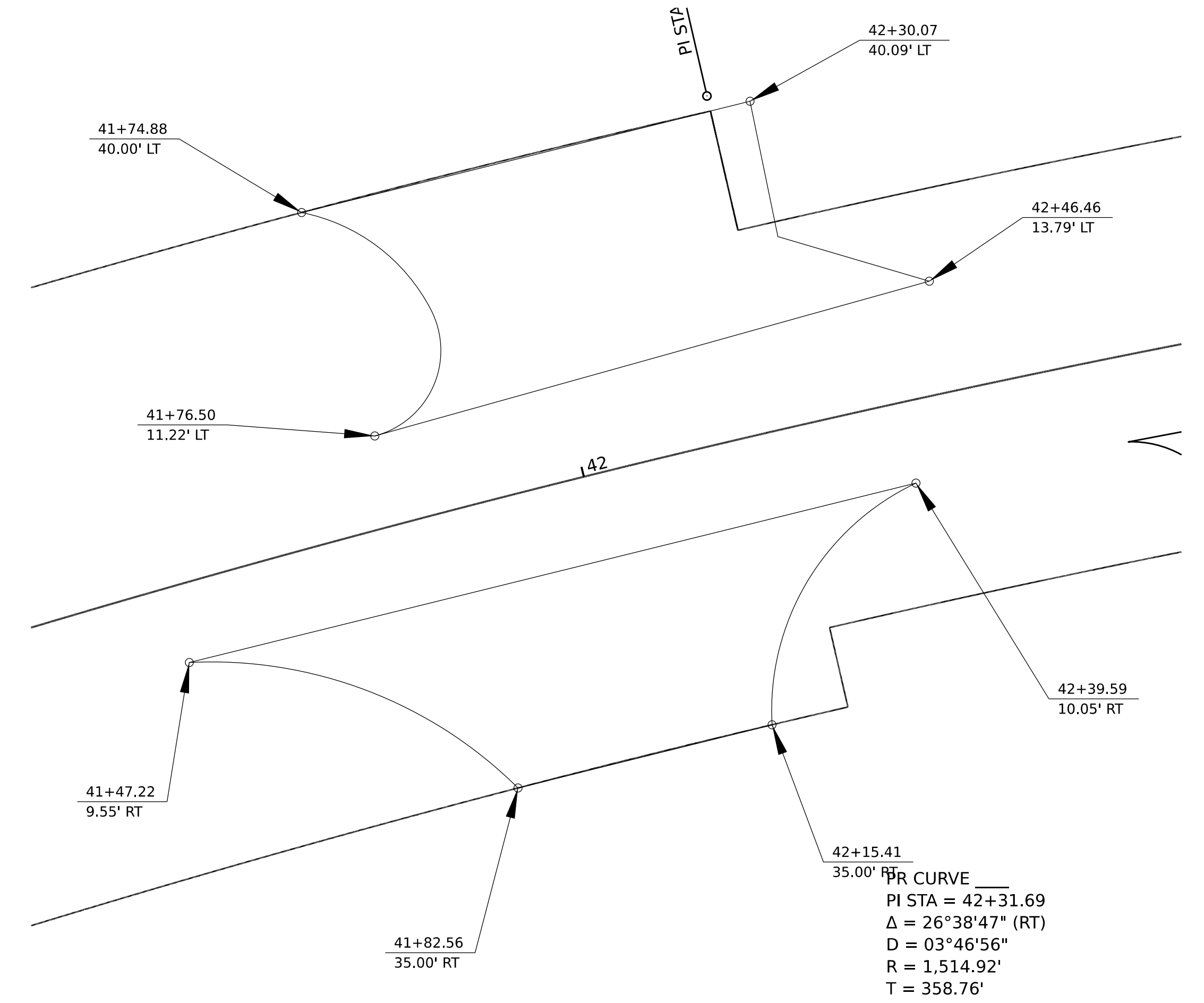
SCALE: SHEET 11 OF 16 SHEETS STA. TO STA.

F.A. RTE.	SECTION	COUNTY	TOTAL SHEETS	SHEET NO.
	21-00071-00-RS	EDWARDS	18	13
PROJECT #: A9JII(752)		CONTRACT NO. 95957		
C-97-084-23	ILLINOIS	FED. AID PROJECT		

**DETAIL OF BUTT JOINTS
AT INTERSECTIONS
27+94.11 - 29+04.98 RT
28+55.87 - 29+32.26 LT**



**DETAIL OF BUTT JOINTS
AT INTERSECTIONS
41+47.22 - 42+39.59 RT
41+76.5 - 42+46.46 LT**



PR CURVE
PI STA = 42+31.69
 $\Delta = 26^\circ 38' 47''$ (RT)
D = 03°46'56"
R = 1,514.92'
T = 358.76'

MODEL: 41001ELNAMES
FILE NAME: 011E15

HAMPTON, LENZINI AND RENWICK, INC.
380 SHEPARD DRIVE
ELGIN, ILLINOIS 60123
ILLINOIS PROFESSIONAL DESIGN FIRM
LS / PE / SE CORP. 184.0000559

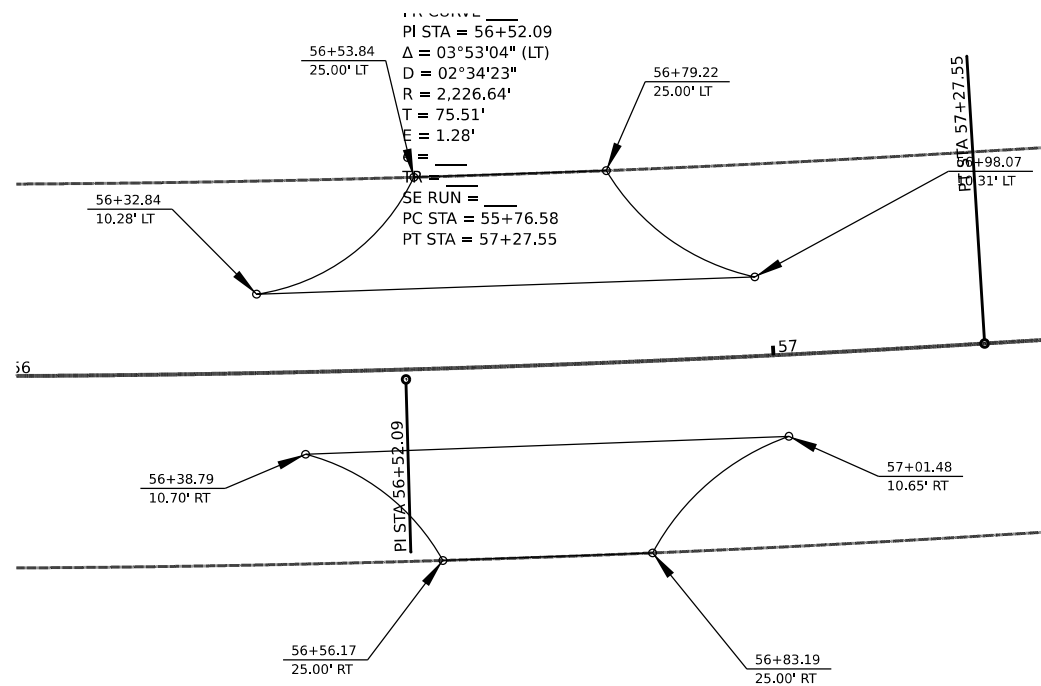
USER NAME = \$USERS	DESIGNED -	REVISED -
PLOT SCALE = \$SCALE\$	DRAWN - LTH	REVISED -
PLOT DATE = \$DATES	CHECKED -	REVISED -
	DATE -	REVISED -

**STATE OF ILLINOIS
DEPARTMENT OF TRANSPORTATION**

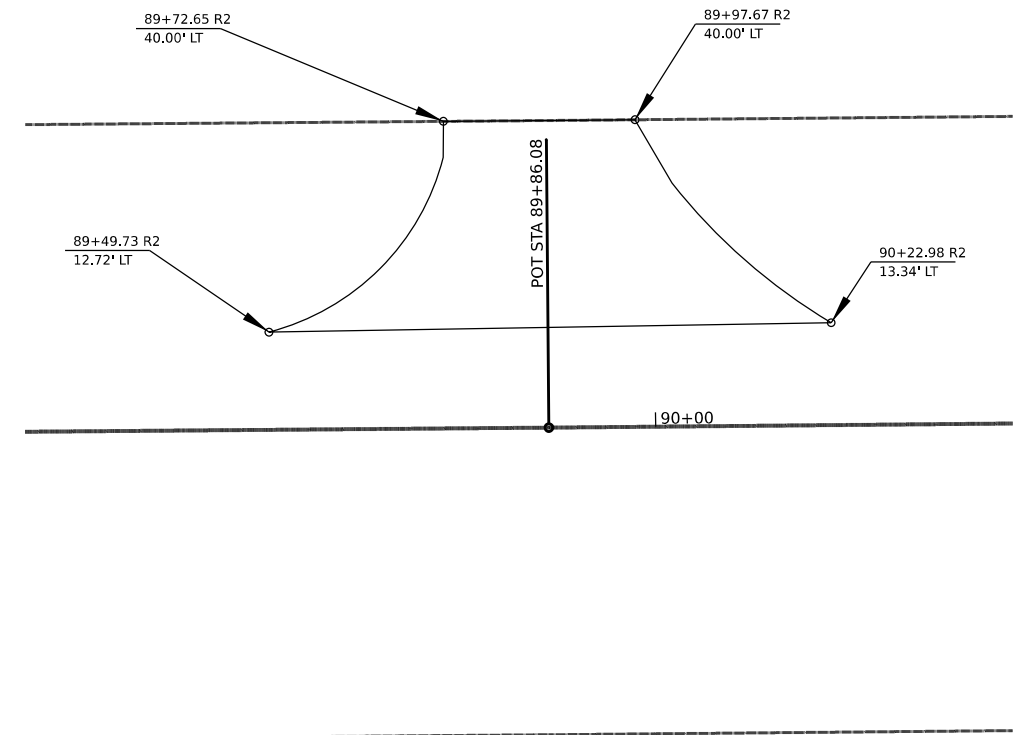
MISCELLANEOUS SCHEDULES AND DETAILS			
SCALE:	SHEET 12	OF 16	SHEETS
	STA.		TO STA.

F.A. RTE.	SECTION	COUNTY	TOTAL SHEETS	SHEET NO.
	21-00071-00-RS	EDWARDS	18	14
PROJECT #: A9JII(752)		CONTRACT NO. 95957		
C-97-084-23	ILLINOIS	FED. AID PROJECT		

**DETAIL OF NUTT JOINTS
AT INTERSECTIONS
56+32.84 - 56+98.07 LT
56+38.79 - 57+01.48 RT**



**DETAIL OF BUTT JOINT
AT INTERSECTION
89+49.73 - 90+22.98 LT**



MODEL: 140DELENAME\$
FILE NAME: 131115.DWG

HAMPTON, LENZINI AND RENWICK, INC.
300 SHEPARD DRIVE
ELGIN, ILLINOIS 60123
ILLINOIS PROFESSIONAL DESIGN FIRM
L.S. / P.E. / S.E. CORP. 154.000055

USER NAME	= \$USERS
PLOT SCALE	= \$SCALE\$
PLOT DATE	= \$DATES

DESIGNED	-
DRAWN	- LTH
CHECKED	-
DATE	-

REVISED	-
REVISED	-
REVISED	-
REVISED	-

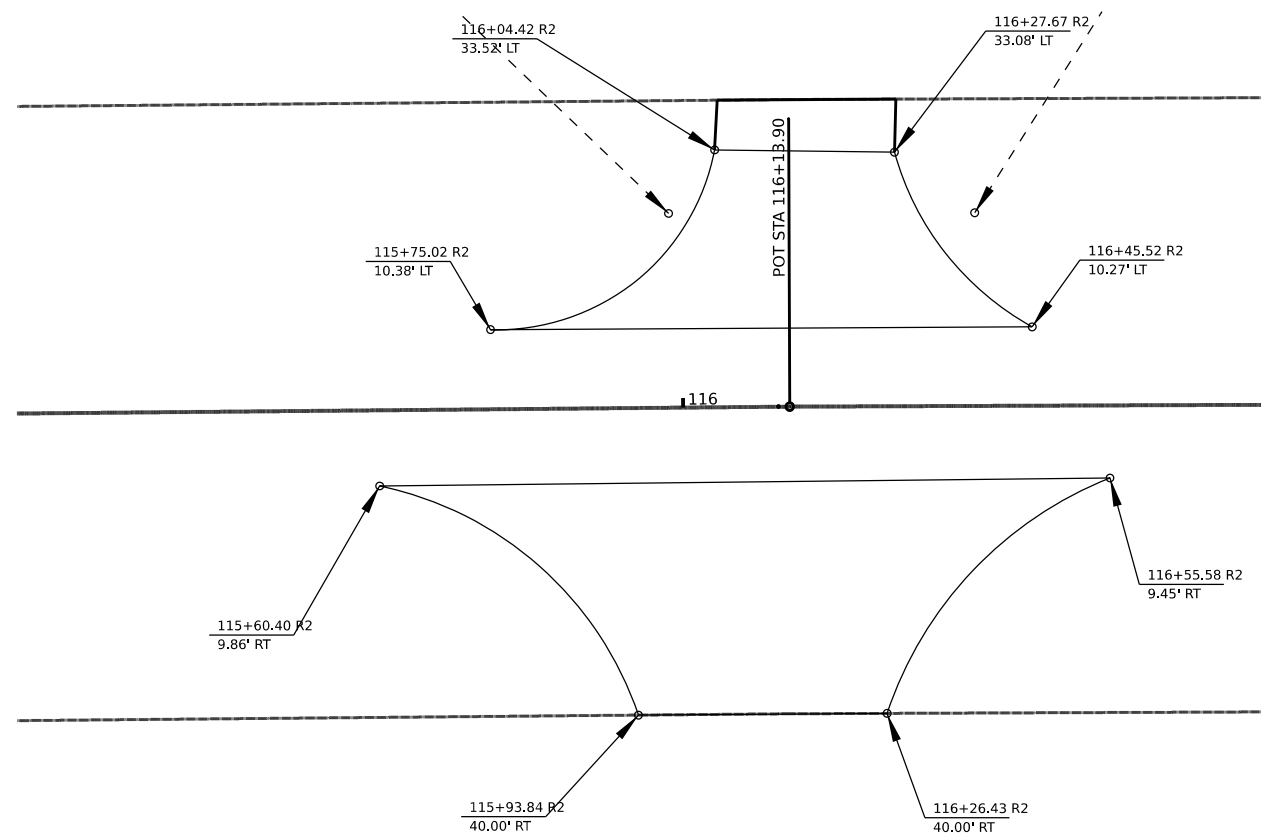
**STATE OF ILLINOIS
DEPARTMENT OF TRANSPORTATION**

MISCELLANEOUS SCHEDULES AND DETAILS

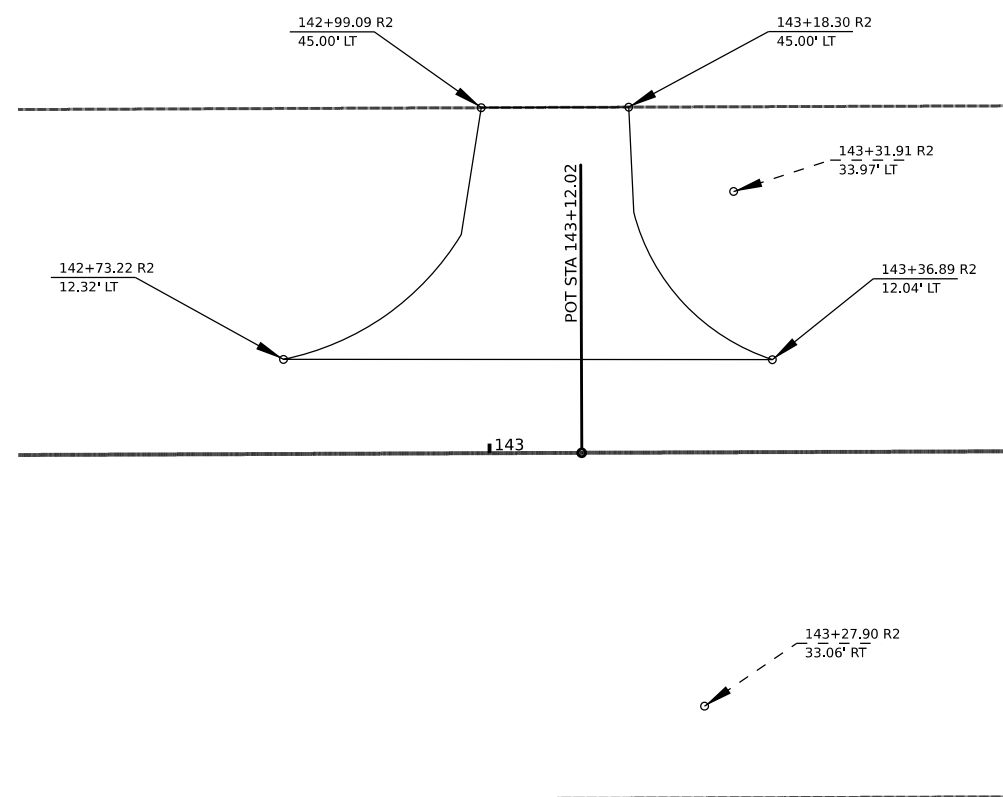
SCALE: SHEET 13 OF 16 SHEETS STA. TO STA.

F.A. RTE.	SECTION	COUNTY	TOTAL SHEETS	SHEET NO.
	21-00071-00-RS	EDWARDS	18	15
PROJECT #: A9J1(752)		CONTRACT NO. 95957		
C-97-084-23	ILLINOIS	FED. AID PROJECT		

**DETAIL OF BUTT JOINTS
AT INTERSECTIONS
115+75.02 - 116+45.52 LT
115+39.26 - 116+55.58 RT**



**DETAIL OF BUTT JOINT
AT INTERSECTION
142+73.22 - 143+36.89 LT**



MODEL: 140DELMAMES
ELEMENTS: 37112

HAMPTON, LENZINI AND RENWICK, INC.
300 SHEPARD DRIVE
ELGIN, ILLINOIS 60123
ILLINOIS PROFESSIONAL DESIGN FIRM
L.S. / P.E. / S.E. CORP. 181.000055

USER NAME = \$USERS
PLOT SCALE = \$SCALE\$
PLOT DATE = \$DATES

DESIGNED -
DRAWN - LTH
CHECKED -
DATE -

REVISED -
REVISED -
REVISED -
REVISED -

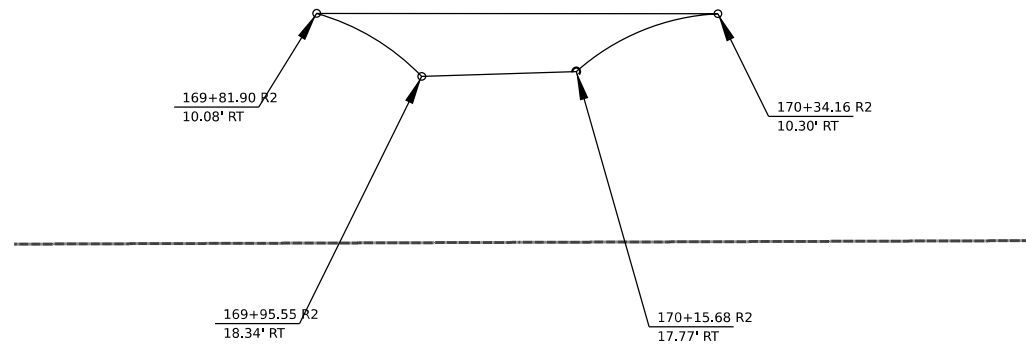
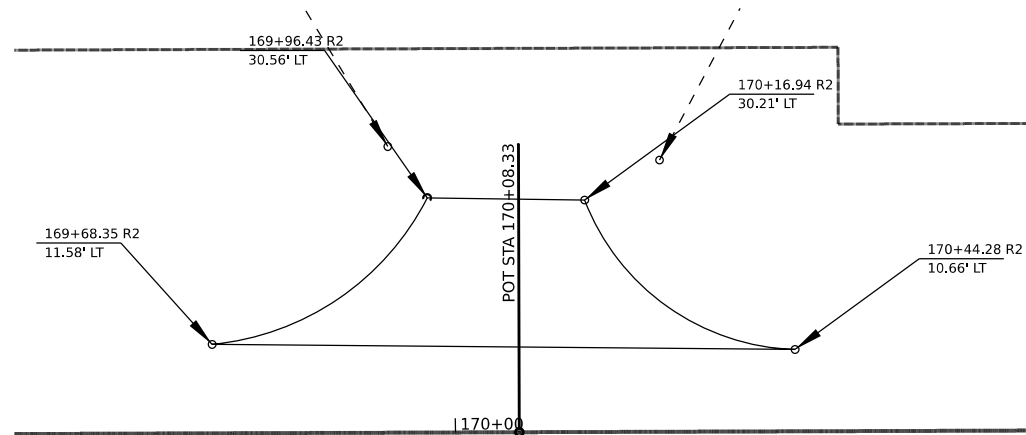
**STATE OF ILLINOIS
DEPARTMENT OF TRANSPORTATION**

MISCELLANEOUS SCHEDULES AND DETAILS

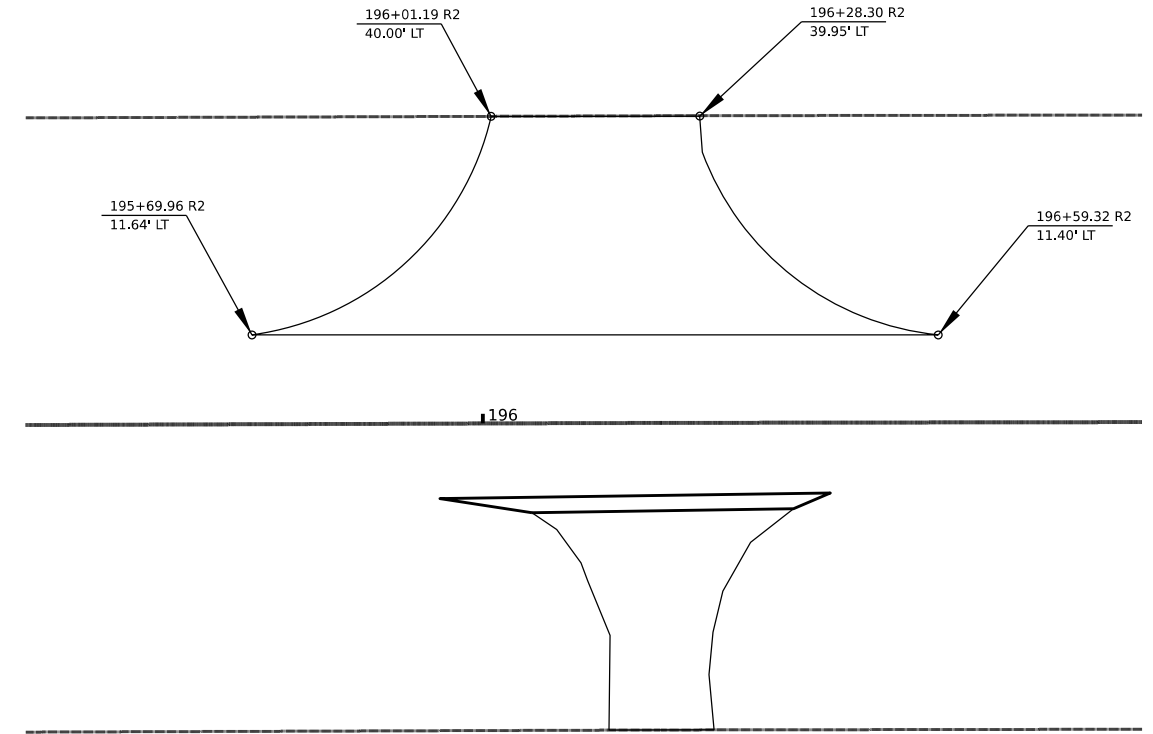
SCALE: SHEET 14 OF 16 SHEETS STA. TO STA.

F.A. RTE.	SECTION	COUNTY	TOTAL SHEETS	SHEET NO.
	21-00071-00-RS	EDWARDS	18	16
PROJECT #: A9J1(752)		CONTRACT NO. 95957		
C-97-084-23	ILLINOIS	FED. AID PROJECT		

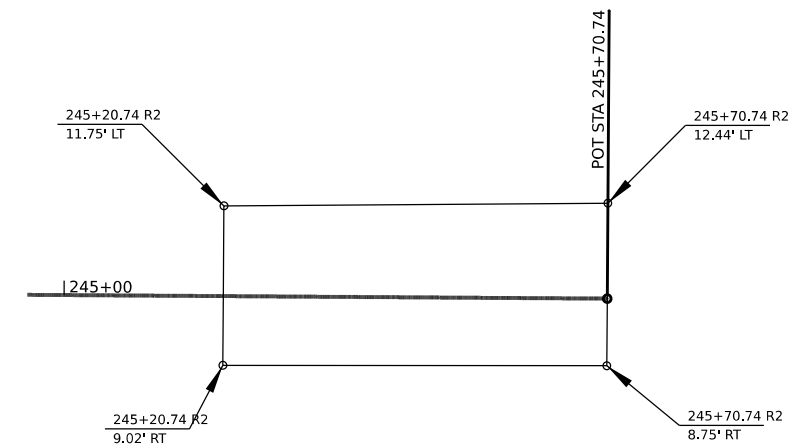
**DETAIL OF BUTT JOINTS
AT INTERSECTIONS**
169+68.35 - 170+44.28 LT
169+81.9 - 170+34.16 RT



**DETAIL OF BUTT JOINT
AT INTERSECTION**
195+69.96 - 196+59.32 LT



DETAIL OF BUTT JOINT
195+69.96 - 196+59.32



MODEL: 140DELENAME\$
FILE NAME: 371217

HAMPTON, LENZINI AND RENWICK, INC.
 300 SHEPARD DRIVE
 ELGIN, ILLINOIS 60123
 ILLINOIS PROFESSIONAL DESIGN FIRM
 63 / PE / SE CORP. 184.000055

USER NAME = \$USERS	DESIGNED -	REVISED -
PLOT SCALE = \$SCALE\$	DRAWN - LTH	REVISED -
PLOT DATE = \$DATES	CHECKED -	REVISED -
	DATE -	REVISED -

**STATE OF ILLINOIS
DEPARTMENT OF TRANSPORTATION**

MISCELLANEOUS SCHEDULES AND DETAILS

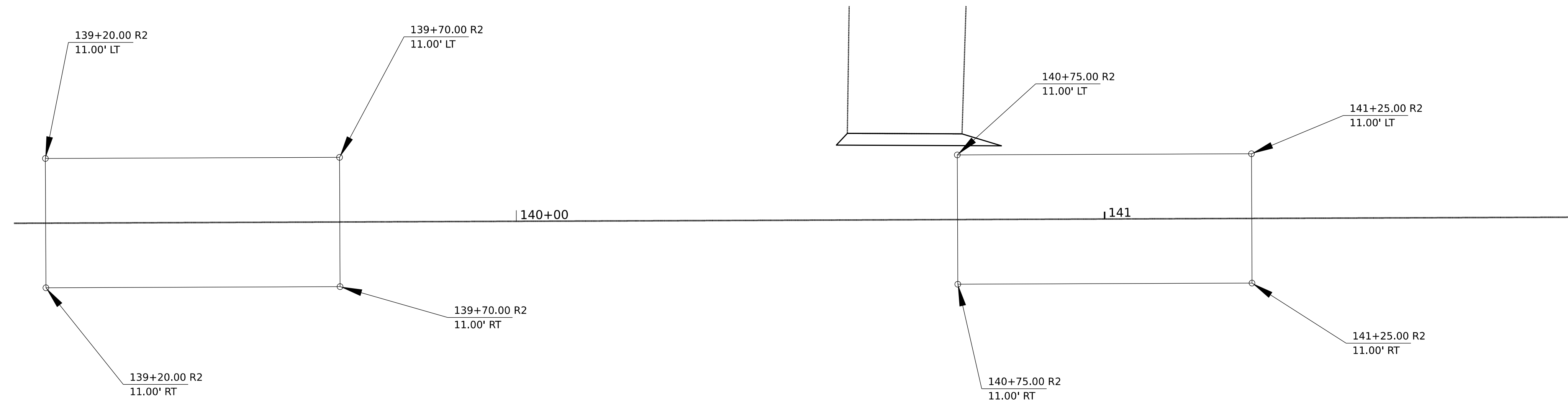
SCALE: SHEET 15 OF 16 SHEETS STA. TO STA.

F.A. RTE.	SECTION	COUNTY	TOTAL SHEETS	SHEET NO.
	21-00071-00-R5	EDWARDS	18	17
PROJECT #: A9J1(752)		CONTRACT NO. 95957		
C-97-084-23	ILLINOIS	FED. AID PROJECT		

DETAIL OF BUTT JOINTS

139+20 - 139+70

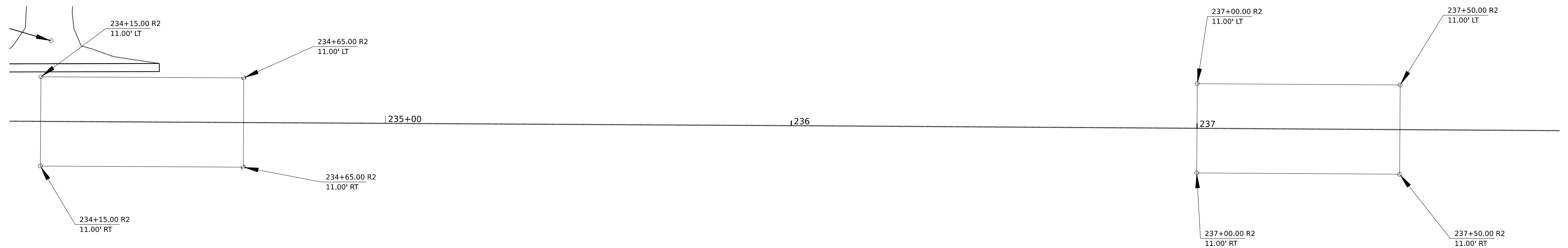
140+75 - 141+25



DETAIL OF BUTT JOINTS

234+15 - 234+65

237+00 - 237+50



MODEL: SHORTRUNAMES
FILE NAME: 811E15

HAMPTON, LENZINI AND RENWICK, INC.
380 SHEPARD DRIVE
ELGIN, ILLINOIS 60123
ILLINOIS PROFESSIONAL DESIGN FIRM
LS / PE / SE CORP. 184.000055

USER NAME = \$USERS	DESIGNED -	REVISED -
PLOT SCALE = \$SCALE\$	DRAWN - LTH	REVISED -
PLOT DATE = \$DATES	CHECKED -	REVISED -
	DATE -	REVISED -

**STATE OF ILLINOIS
DEPARTMENT OF TRANSPORTATION**

MISCELLANEOUS SCHEDULES AND DETAILS

SCALE: SHEET 16 OF 16 SHEETS STA. TO STA.

F.A. RTE.	SECTION	COUNTY	TOTAL SHEETS	SHEET NO.
	21-00071-00-RS	EDWARDS	18	18
PROJECT #: A9JII(752)		CONTRACT NO. 95957		
C-97-084-23	ILLINOIS	FED. AID PROJECT		