

STATE OF ILLINOIS
DEPARTMENT OF TRANSPORTATION

**PROPOSED
HIGHWAY PLANS**

FAS 1197 (US 30)
**SECTION (110BR-1)BR
BRIDGE REPAIRS
WHITESIDE COUNTY, IL**

C-92-132-23

F.A.S. RTE.	SECTION	COUNTY	TOTAL SHEETS	SHEET NO.
1197	(110BR-1)BR	WHITESIDE	23	1
		ILLINOIS	CONTRACT NO. 64S65	

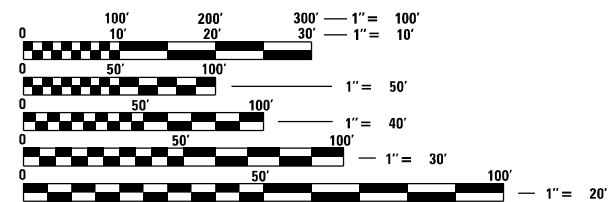
FOR INDEX OF SHEETS, SEE SHEET NO. 2

FRANCIS NELSON III, P.E. DATE
LICENSE EXPIRES 11/30/2023
SHEET RANGE 4 - 12; 16-23

SCOTT T. WYATT, S.E. DATE
LICENSE EXPIRES 11/30/2024
SHEET RANGE 1-3; 13-15

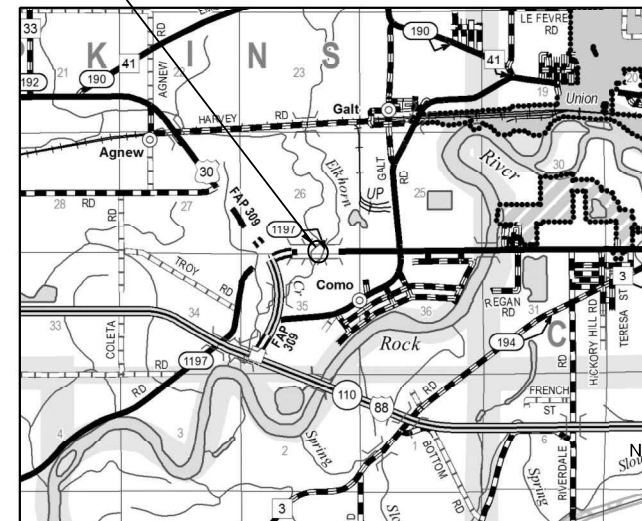


PROJECT LOCATION:
SN 098-0033
447'-1" LONG 6-SPAN MULTI-BEAM GIRDER WITH
SPREAD FOOTING PIERS AND CLOSED
SPREAD FOOTING ABUTS OVER ELKHORN CREEK



FULL SIZE PLANS HAVE BEEN PREPARED USING STANDARD ENGINEERING SCALES, REDUCED SIZED PLANS WILL NOT CONFORM TO STANDARD SCALES. IN MAKING MEASUREMENTS ON REDUCED PLANS, THE ABOVE SCALES MAY BE USED.

J.U.L.I.E.
JOINT UTILITY LOCATION INFORMATION FOR EXCAVATORS
1-800-892-0123
OR 811



GROSS LENGTH = 447 FT. = 0.085 MILE
NET LENGTH = 447 FT. = 0.085 MILE

PROJECT ENGINEER: SCOTT WYATT
PROJECT MANAGER: MAHMOUD ETEMADI

CONTRACT NO. 64S65

STATE OF ILLINOIS
DEPARTMENT OF TRANSPORTATION

SUBMITTED December 11, 20 23

David Howard
REGIONAL ENGINEER

March 22, 2024
Scott A. Etk
ENGINEER OF DESIGN AND ENVIRONMENT

March 22, 2024
Stephen M. Smith
DIRECTOR OF HIGHWAYS PROJECT IMPLEMENTATION

**PRINTED BY THE AUTHORITY
OF THE STATE OF ILLINOIS**

SHEET INDEX

1	COVER SHEET
2	GENERAL NOTES
3-4	SOQ
5-12	MOT
13	PLAN AND ELEVATION
14	DECK REPAIRS
15	ABUTMENT REPAIRS
16-23	DISTRICT STANDARDS

STATE HIGHWAY STANDARDS

STD NO.	DESCRIPTION
000001-08	STANDARD SYMBOLS, ABBREVIATIONS AND PATTERNS
482001-02	HMA SHOULDER ADJACENT TO FLEXIBLE PAVEMENT
701006-05	OFF-ROAD OPERATIONS, 2L, 2W, 15' (4.5 M) TO 24" (600 MM) FROM PAVEMENT EDGE
701201-05	LANE CLOSURE, 2L, 2W, DAY ONLY, FOR SPEEDS > 45 MPH
701301-04	LANE CLOSURE, 2L, 2W, SHORT TIME OPERATIONS
701311-03	LANE CLOSURE, 2L, 2W, MOVING OPERATIONS - DAY ONLY
701321-18	LANE CLOSURE, 2L, 2W, BRIDGE REPAIR WITH BARRIER
701326-04	LANE CLOSURE, 2L, 2W, PAVEMENT WIDENING, FOR SPEEDS > 45 MPH
701901-09	TRAFFIC CONTROL DEVICES
704001-08	TEMPORARY CONCRETE BARRIER
780001-05	TYPICAL PAVEMENT MARKINGS
782006-01	GUARDRAIL AND BARRIER WALL REFLECTOR MOUNTING DETAILS

MAINTENANCE OF TRAFFIC GENERAL NOTES

1. THE MAINTENANCE OF TRAFFIC CONTROL (MOT) PLANS SHALL SERVE AS A GUIDE FOR SAFE DIVERSION OF TRAFFIC DURING EXECUTION OF THIS CONTRACT. HOWEVER, THE CONTRACTOR MAY MODIFY THE MOT PLANS TO MEET CONSTRUCTION NEEDS, BUT NOT AT THE EXPENSE OF PUBLIC SAFETY OR CONVENIENCE. ANY CHANGES TO THE MOT PLANS SHALL BE SUBMITTED TO THE ENGINEER FOR APPROVAL.
2. THE ENGINEER SHALL BE INFORMED 48 HOURS IN ADVANCE OF ANY PROPOSED CHANGE TO THE MOT PLANS.
3. A FULL DEPTH SAW CUT SHALL BE REQUIRED BETWEEN PAVEMENT, CURB AND / OR GUTTER TO REMAIN AND PAVEMENT, CURB AND / OR GUTTER TO BE REMOVED PRIOR TO BEGINNING OF REMOVAL WORK. COST TO BE INCLUDED WITH APPLICABLE REMOVAL ITEMS.
4. THE CONTRACTOR SHALL CONTACT THE IDOT DISTRICT 2 ENGINEER AT (815) 284-2271 A MINIMUM OF 72 HOURS IN ADVANCE OF BEGINNING WORK.

SUGGESTED MAINTENANCE OF TRAFFIC SEQUENCING

PRESTAGE

INSTALL CONSTRUCTION TRAFFIC CONTROL SIGNS AND DEVICES FOR PRESTAGE CONSTRUCTION USING HIGHWAY STANDARD 701326.

REMOVE AND REPLACE SHOULDERS AS DETAILED IN THE PLANS USING "EXCAVATING AND GRADING EXISTING SHOULDER" AND "HOT-MIX ASPHALT SHOULDERS, 8".

COORDINATE WITH THE ENGINEER IF EXISTING GUARDRAIL NEEDS TO BE REMOVED TO FACILITATE SHOULDER CONSTRUCTION. AREAS WHERE GUARDRAIL IS REMOVED MUST BE PROTECTED IN ACCORDANCE WITH IDOT STANDARD TRAFFIC CONTROL AND PROTECTION MEASURES TO THE SATISFACTION OF THE ENGINEER. GUARDRAIL MUST BE REINSTALLED PRIOR TO IMPLEMENTATION OF ADJACENT STAGED CONSTRUCTION TRAFFIC DETOUR. COST INCLUDED IN ITEMS "EXCAVATING AND GRADING EXISTING SHOULDER" AND "HOT-MIX ASPHALT SHOULDERS, 8".

STAGE 1

INSTALL ALL STAGE 1 CONSTRUCTION TRAFFIC CONTROL SIGNALS, SIGNS, MARKINGS, AND DEVICES AS DETAILED IN THE PLANS AND APPROPRIATE HIGHWAY STANDARD DRAWINGS.

MERGE ALL TRAFFIC IN BOTH DIRECTIONS TO THE EXISTING WESTBOUND LANE AND SHOULDER.

COORDINATE WORK TO BE COMPLETED IN THIS STAGE WITH DETAILS IN THE BRIDGE PLANS.

STAGE 2

CHANGE STAGE 1 CONSTRUCTION TRAFFIC CONTROL SIGNALS, SIGNS, MARKINGS, AND DEVICES AS REQUIRED TO REFLECT STAGE 2 PLANS AND APPROPRIATE STANDARD DRAWINGS.

MERGE ALL TRAFFIC IN BOTH DIRECTIONS TO THE EXISTING EASTBOUND LANE AND SHOULDER.

REMOVE ALL CONFLICTING TRAFFIC CONTROL ITEMS FROM STAGE 1 SETUP.

COORDINATE WORK TO BE COMPLETED IN THIS STAGE WITH DETAILS IN THE BRIDGE PLANS.

POST STAGE

REMOVE ALL CONSTRUCTION TRAFFIC CONTROL AND TEMPORARY CONSTRUCTION ITEMS.

REMOVE ANY REMAINING EXISTING OR TEMPORARY PAVEMENT MARKINGS WITHIN THE PERMANENT PAVEMENT MARKING LIMITS. INSTALL FINAL PAVEMENT MARKINGS TO MATCH EXISTING CONDITIONS AND AS DETAILED IN THE APPROPRIATE HIGHWAY STANDARDS.

SCHEDULE OF TEMPORARY CONCRETE BARRIER AND REFLECTORS						
LOCATION	STATION		TEMPORARY CONC BARRIER PLACEMENT		BARRIER WALL REFLECTORS, TYPE C	GUARDRAIL REFL TYPE C (SPECIAL)
	BEGIN	END	FOOT	RELOCATE FOOT	EACH	EACH
STAGE 1 & STAGE 2	1239+83.88	1246+67.14	700.0	687.5	106	70
TOTAL			700.0	687.5	106	70
USE			700	688	106	70

SCHEDULE OF PAVEMENT MARKING AND REMOVAL										
STAGE 1										
ITEM	LOCATION	STATION		OFFSET	PAVEMENT MARKINGS			MARKING REMOVAL		
		BEGIN	END		4" TEMP FOOT	24" TEMP FOOT	4" PERM FOOT	4" EX SQ FT	4" TEMP SQ FT	24" TEMP SQ FT
EXISTING MARKING REMOVAL	WB EDGELINE	1235+86.34	1248+74.89	LT					429.5	
EXISTING MARKING REMOVAL	EB EDGELINE	1235+86.34	1248+74.89	RT					429.5	
EXISTING MARKING REMOVAL	CENTERLINE	1235+86.34	1248+74.89	LT/RT					107.4	
4" WHITE TEMP TAPE	LT TRAVEL LANE EDGELINE	1236+68.95	1247+86.47	LT	1117.7					
4" WHITE TEMP TAPE	RT TRAVEL LANE EDGELINE	1235+96.34	1248+14.89	LT/RT	1220.1					
24" WHITE TEMP TAPE	WB STOPLINE	1235+86.34		RT		12.0				
24" WHITE TEMP TAPE	EB STOP LINE	1248+74.89		LT		12.0				
STAGE 2										
TEMP MARKING REMOVAL	LT TRAVEL LANE EDGELINE	1236+68.95	1247+86.47	LT					372.5	
TEMP MARKING REMOVAL	RT TRAVEL LANE EDGELINE	1235+96.34	1248+14.89	LT/RT					406.2	
4" WHITE TEMP TAPE	LT TRAVEL LANE EDGELINE	1236+68.34	1248+64.89	LT/RT	1220.1					
4" WHITE TEMP TAPE	RT TRAVEL LANE EDGELINE	1236+69.34	1247+92.89	RT	1123.7					
24" WHITE TEMP TAPE	WB STOPLINE	1235+86.34		RT		12.0				
24" WHITE TEMP TAPE	EB STOP LINE	1248+74.89		LT		12.0				
POST STAGE										
TEMP MARKING REMOVAL	LT TRAVEL LANE EDGELINE	1236+46.34	1248+64.89	LT/RT					406.2	
TEMP MARKING REMOVAL	RT TRAVEL LANE EDGELINE	1236+69.34	1247+92.89	RT					374.5	
TEMP MARKING REMOVAL	EB, WB, STOP LINES	1235+86.34	1248+74.89	LT/RT						48.0
4" PERMINANT MARKING	WB PERMINANT EDGELINE	1235+86.34	1248+74.89	LT			1288.6			
4" PERMINANT MARKING	EB PERMINANT EDGELINE	1235+86.34	1248+74.89	RT			1288.6			
4" PERMINANT MARKING	CL PERMINANT LINE	1235+86.34	1248+74.89	LT/RT			322.1			
TOTALS					4681.57	48.0	2899.2	966.4	1607.4	
USE					4,682	48	2,900	967	1,608	

MODEL: Unnamed Plan - Plan 1 [Sheet]
FILE NAME: S:\2023\231005 PTB 206-23 DD - KPF - Various Phase II for Bridge Rehab\W06\CADD\CADD Sheets\264565-shh-Cemnote.dgn



USER NAME = rgoertz	DESIGNED - RG	REVISED -
PLOT SCALE = 0.16666833' / in.	DRAWN - RG	REVISED -
PLOT DATE = 12/5/2023	CHECKED - FBN	REVISED -
	DATE -	REVISED -

**STATE OF ILLINOIS
DEPARTMENT OF TRANSPORTATION**

**US 30 OVER ELKHORN CREEK
GENERAL NOTES / CONSTRUCTION SEQUENCE**

F.A.S. RTE.	SECTION	COUNTY	TOTAL SHEETS	SHEET NO.
1197	(110BR-1)BR	WHITESIDE	23	2
CONTRACT NO. 64S65				
ILLINOIS FED. AID PROJECT				

SCALE: SHEET 1 OF 1 SHEETS STA. TO STA.

SUMMARY OF QUANTITIES

CONSTRUCTION CODE

100% STATE: 0013

CODE NO.	ITEM	UNIT	TOTAL QUANTITY	CONSTRUCTION CODE	
				100% STATE: 0013	
				BRIDGE	ROADWAY
				SN 098-0033	RURAL
20600200	GRANULAR EMBANKMENT, SPECIAL	CU YD	9	9	
40600290	BITUMINOUS MATERIALS (TACK COAT)	POUND	320	320	
48203029	HOT-MIX ASPHALT SHOULDERS, 8"	SQ YD	744	744	
67100100	MOBILIZATION	L SUM	1	1	
70100405	TRAFFIC CONTROL AND PROTECTION, STANDARD 701321	EACH	1	1	
70100500	TRAFFIC CONTROL AND PROTECTION, STANDARD 701326	L SUM	1	1	
70103850	TRAFFIC CONTROL SURVEILANCE	CAL DA	18	18	
70106500	TEMPORARY BRIDGE TRAFFIC SIGNALS	EACH	1	1	
70107025	CHANGEABLE MESSAGE SIGN	CAL DA	28	28	
70300150	SHORT TERM PAVEMENT MARKING REMOVAL	SQ FT	1608	1608	
70307120	TEMPORARY PAVEMENT MARKING - LINE 4" - TYPE IV TAPE	FOOT	4682	4682	
70307210	TEMPORARY PAVEMENT MARKING - LINE 24" - TYPE IV TAPE	FOOT	48	48	
70400100	TEMPORARY CONCRETE BARRIER	FOOT	700	700	
70400200	RELOCATE TEMPORARY CONCRETE BARRIER	FOOT	687.5	687.5	
70600270	IMPACT ATTENUATORS, TEMPORARY (FULLY REDIRECTIVE), TEST LVL 3	EACH	4	4	

MODEL: Default
FILE NAME: \\kpf.com\ids\bridge\2300583 (DOT WO 6 64S65)02_Design (MS)\64S65 - SOQ.dgn



USER NAME =
PLOT SCALE =
PLOT DATE =

DESIGNED -	REVISED -
CHECKED -	REVISED -
DRAWN -	REVISED -
CHECKED -	REVISED -

STATE OF ILLINOIS
DEPARTMENT OF TRANSPORTATION

SN 098-0033 US 30 OVER ELKHORN CREEK
SUMMARY OF QUANTITIES

F.A.S. RTE.	SECTION	COUNTY	TOTAL SHEETS	SHEET NO.
1197	(110BR-1)BR	WHITESIDE	23	3
SN 098-0033		CONTRACT NO. 64S65		

SUMMARY OF QUANTITIES

CONSTRUCTION CODE: 0013

100% STATE

CODE NO.	ITEM	UNIT	TOTAL QUANTITY	BRIDGE		ROADWAY
				SN 098-0033		RURAL
70600327	IMPACT ATTENUATORS, RELOCATE (FULLY REDIRECTIVE), TEST LVL 3	EACH	2	2		
* 78009004	MODIFIED URETHANE PAVEMENT MARKING - LINE 4"	FOOT	2900	2900		
* 78100300	REPLACEMENT REFLECTOR	EACH	10	10		
* 78200011	BARRIER WALL REFLECTORS TYPE C	EACH	106	106		
78300202	PAVEMENT MARKING REMOVAL - WATER BLASTING	SQ FT	967	967		
X0325748	ACRYLIC COATING	SQ YD	12	12		
* X7820007	GUARDRAIL REFLECTORS, TYPE C (SPECIAL)	EACH	70	70		
X7830050	RAISED REFLECTOR PAVEMENT MARKER, REFLECTOR REMOVAL	EACH	10	10		
Z0016001	DECK SLAB REPAIR (FULL DEPTH TYPE I)	SQ YD	50	50		
Z0012754	STRUCTURAL REPAIR OF CONCRETE (DEPTH <= 5")	SQ YD	300	300		
Z0016200	DECK SLAB REPAIR (PARTIAL)	SQ YD	150	150		

* = SPECIALTY ITEM

MODEL: Default
FILE NAME: \\kpff.com\dfs\Bridges\2300683 (DOT WO 6 64565)02_Design (MS)64565 - SOO.dgn



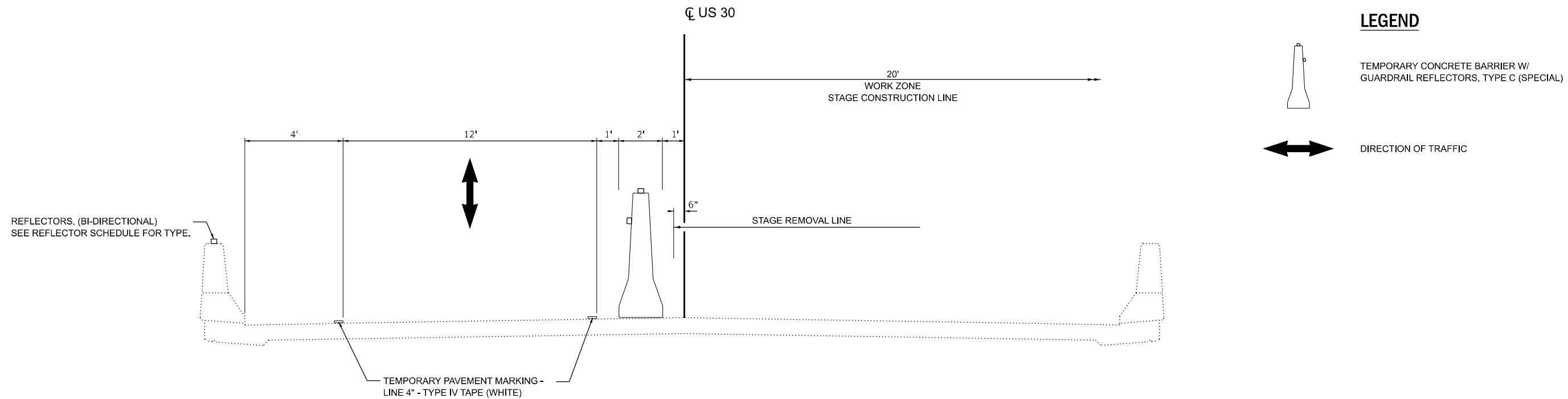
USER NAME =	DESIGNED -	REVISED -
	CHECKED -	REVISED -
PLOT SCALE =	DRAWN -	REVISED -
PLOT DATE =	CHECKED -	REVISED -

**STATE OF ILLINOIS
DEPARTMENT OF TRANSPORTATION**

**SN 098-0033 US 30 OVER ELKHORN CREEK
SUMMARY OF QUANTITIES**

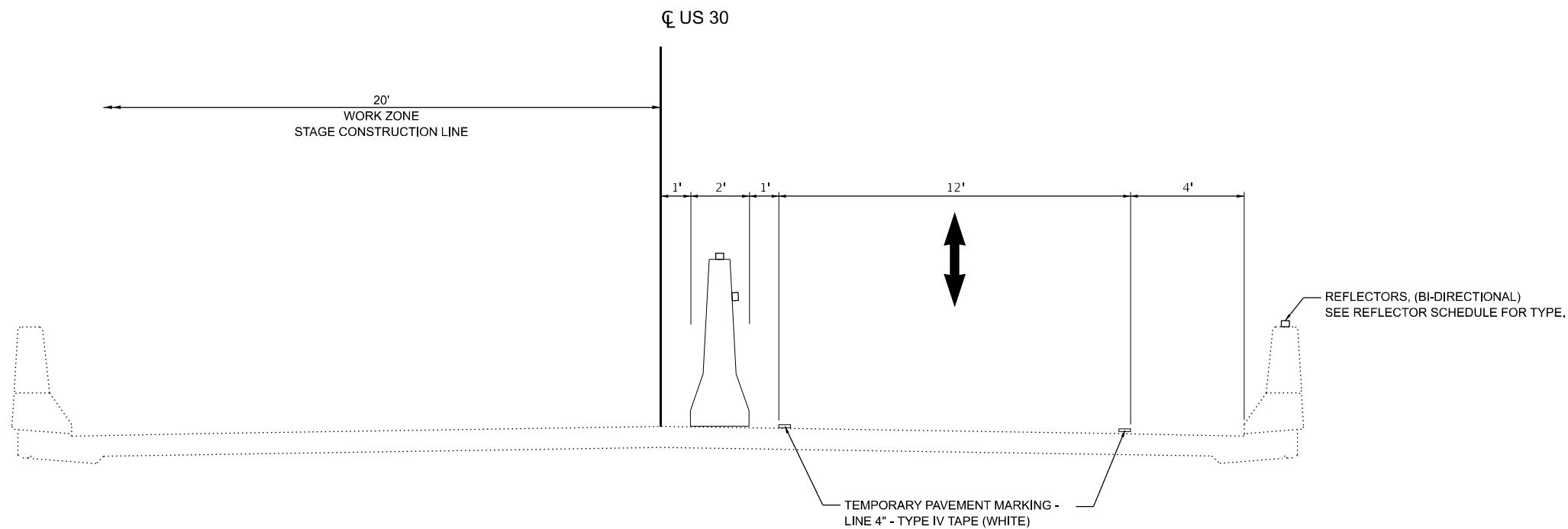
F.A.S RTE. 1197	SECTION (110BR-1)BR	COUNTY WHITESIDE	TOTAL SHEETS 23	SHEET NO. 4
SN 098-0033		CONTRACT NO. 64S65		
ILLINOIS FED. AID PROJECT				

MODEL: Unnamed Plan - Plan 1 [Sheet]
 FILE NAME: S:\2023\2311\005 PTB 206-23 D2 - KPF - Various Phase II for Bridge Rehab\W0 06\CADD\CADD Sheets\ID264\565-sht-Staging_Typicals.dgn



STAGE 1 TYPICAL SECTION

SN 098-0033
 (LOOKING EAST)



STAGE 2 TYPICAL SECTION

SN 098-0033
 (LOOKING EAST)



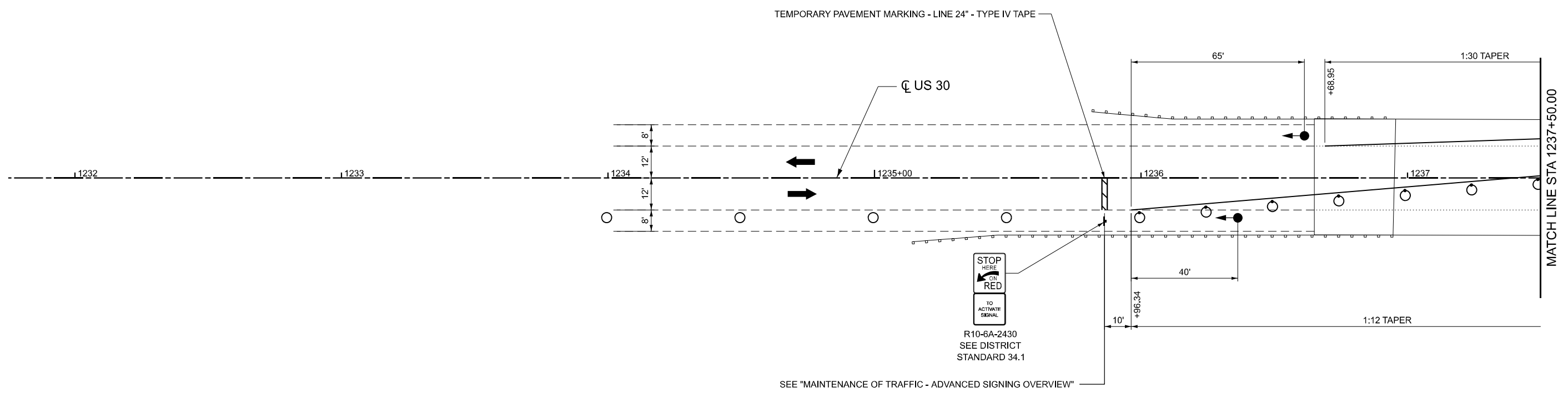
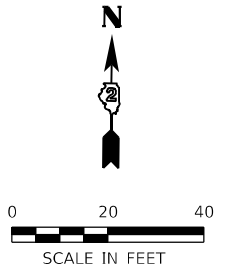
USER NAME = jnejmanowski	DESIGNED - RG	REVISED -
DRAWN - TO	REVISIONS -	
PLOT SCALE = 0.16666633' / in.	CHECKED - FBN	REVISED -
PLOT DATE = 12/5/2023	DATE -	REVISED -

**STATE OF ILLINOIS
 DEPARTMENT OF TRANSPORTATION**

**US 30 OVER ELKHORN CREEK
 MAINTAINANCE OF TRAFFIC - STAGING TYPICALS**

SCALE: 1" = 5' SHEET 1 OF 8 SHEETS STA. TO STA.

F.A.S. RTE.	SECTION	COUNTY	TOTAL SHEETS	SHEET NO.
1197	(110BR-1)BR	WHITESIDE	23	5
CONTRACT NO. 64S65				
ILLINOIS FED. AID PROJECT				



LEGEND

- WORK ZONE
- IMPACT ATTENUATOR
- TRAFFIC SIGN
- VERTICAL PANEL
- TEMPORARY CONCRETE BARRIER
- TYPE II BARRICADE OR DRUM WITH STEADY BURN LIGHT
- TYPE II BARRICADE OR DRUM
- TYPE III BARRICADE
- DIRECTION OF TRAFFIC
- TEMPORARY TRAFFIC SIGNAL

MODEL: Unnamed Plan - Plan 1 [Sheet]
 FILE NAME: S:\2023\231005 PTB_206-23 D2 - KPFF - Various Phase II for Bridge Rehab\W0 06\CADD\CADD Sheets\1236\1236-565-sht-staging_01.dgn



USER NAME = jnejmanowski	DESIGNED - RG	REVISED -
PLOT SCALE = 0.16666633' / in.	DRAWN - TO	REVISED -
PLOT DATE = 12/5/2023	CHECKED - FBN	REVISED -
	DATE -	REVISED -

STATE OF ILLINOIS
DEPARTMENT OF TRANSPORTATION

US 30 OVER ELKHORN CREEK
MAINTENANCE OF TRAFFIC - STAGE 1 PLANS

SCALE: 1" = 20' SHEET 2 OF 8 SHEETS STA. 1237+25.00 TO STA. 1243+25.00

F.A.S. RTE.	SECTION	COUNTY	TOTAL SHEETS	SHEET NO.
1197	(110BR-1)BR	WHITESIDE	23	6
CONTRACT NO. 64S65				
ILLINOIS FED. AID PROJECT				



NOTES:

1. REFLECTORS FOR SN 089-0033 (STAGE 1)
2. REFLECTORS TYPE C - MOUNTED ON TEMPORARY CONCRETE BARRIER IN ACCORDANCE WITH IDOT STANDARD 782006. COST INCLUDED IN ITEM "TEMPORARY CONCRETE BARRIER"
3. GUARDRAIL REFLECTORS, TYPE C - BI-DIRECTIONAL PERMANENTLY MOUNTED ON 25' C-C ON THE TOP OF NORTH BRIDGE PARAPET AND APPROACH GUARDRAIL AS PER D2 STANDARD 55.1. COST INCLUDED IN ITEM "GUARDRAIL REFLECTORS, TYPE C (SPECIAL)".

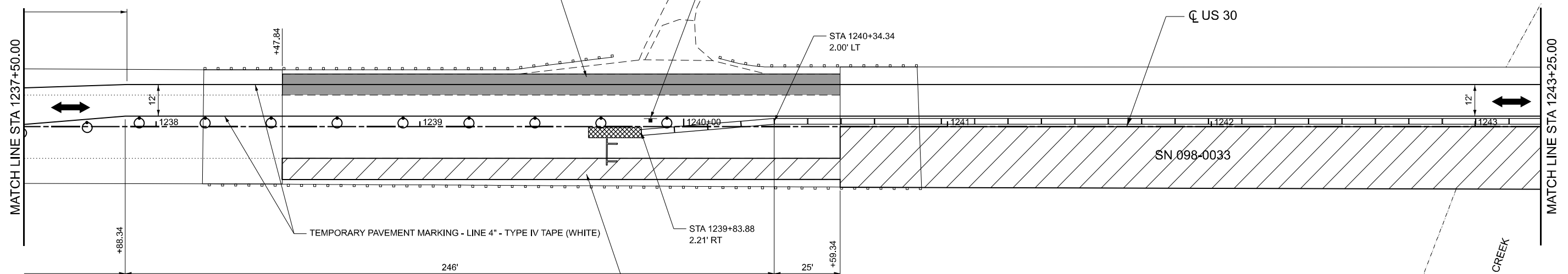
**CAUTION
ONE LANE ROAD
FOLLOW TRAFFIC
FLOW**

SEE DISTRICT 2 STANDARD 34.1

MILL EXISTING STABILIZED SHOULDER 8.5' WIDE AND 8" DEEP IN ACCORDANCE WITH IDOT STANDARD 482006. COST INCLUDED IN ITEM "EXCAVATING AND GRADING EXISTING SHOULDER".

REPLACE WITH HMA IN ACCORDANCE WITH IDOT STANDARD 482006. COST INCLUDED IN ITEM "HOT-MIX ASPHALT SHOULDERS, 8"

PRIME TO BE INCLUDED IN ITEM "HOT-MIX ASPHALT SHOULDERS, 8". AGGREGATE WEDGE SHOULDER IS NOT APPLICABLE.



TEMPORARY PAVEMENT MARKING - LINE 4" - TYPE IV TAPE (WHITE)

MILL EXISTING STABILIZED SHOULDER 8.5' WIDE AND VARIES AND 8" DEEP IN ACCORDANCE WITH IDOT STD 482006. COST INCLUDED IN ITEM "EXCAVATING AND GRADING EXISTING SHOULDER"

REPLACE WITH HMA IN ACCORDANCE WITH IDOT STD 482006. COST INCLUDED IN ITEM "HOT-MIX ASPHALT SHOULDERS, 8".

PRIME TO BE INCLUDED IN ITEM "HOT-MIX ASPHALT SHOULDERS, 8". AGGREGATE WEDGE SHOULDER IS NOT APPLICABLE.

LEGEND

- WORK ZONE
- IMPACT ATTENUATOR
- TRAFFIC SIGN
- VERTICAL PANEL
- TEMPORARY CONCRETE BARRIER
- TYPE II BARRICADE OR DRUM WITH STEADY BURN LIGHT
- TYPE II BARRICADE OR DRUM
- TYPE III BARRICADE
- DIRECTION OF TRAFFIC
- TEMPORARY TRAFFIC SIGNAL

MODEL: Unnamed Plan - Plan 2 (Sheet)
FILE NAME: S:\2023\231006 PTB 206-23 D2 - KPF - Various Phase II for Bridge Rehab\W0 06\CADD\CADD Sheets\1243+25-1243+25-Stage 1.dgn



USER NAME = rgoertz	DESIGNED - RG	REVISED -
PLOT SCALE = 0.16666633' / in.	DRAWN - TO	REVISED -
PLOT DATE = 12/5/2023	CHECKED - FBN	REVISED -
	DATE -	REVISED -

**STATE OF ILLINOIS
DEPARTMENT OF TRANSPORTATION**

**US 30 OVER ELKHORN CREEK
MAINTAINANCE OF TRAFFIC - STAGE 1 PLANS**

SCALE: 1" = 20' SHEET 3 OF 8 SHEETS STA. 1243+25.00 TO STA. 1249+00.00

F.A.S. RTE.	SECTION	COUNTY	TOTAL SHEETS	SHEET NO.
1197	(110BR-1)BR	WHITESIDE	23	7
CONTRACT NO. 64S65				
ILLINOIS FED. AID PROJECT				



NOTES:

- REFLECTORS FOR SN 089-0033 (STAGE 1)
- REFLECTORS TYPE C - MOUNTED ON TEMPORARY CONCRETE BARRIER IN ACCORDANCE WITH IDOT STANDARD 782006. COST INCLUDED IN ITEM "TEMPORARY CONCRETE BARRIER"
- GUARDRAIL REFLECTORS, TYPE C - BI-DIRECTIONAL PERMANENTLY MOUNTED ON 25' C-C ON THE TOP OF NORTH BRIDGE PARAPET AND APPROACH GUARDRAIL AS PER D2 STANDARD 55.1. COST INCLUDED IN ITEM "GUARDRAIL REFLECTORS, TYPE C (SPECIAL)".

MILL EXISTING STABILIZED SHOULDER 8.5' WIDE AND 8" DEEP IN ACCORDANCE WITH IDOT STANDARD 482006. COST INCLUDED IN ITEM "EXCAVATING AND GRADING EXISTING SHOULDER".

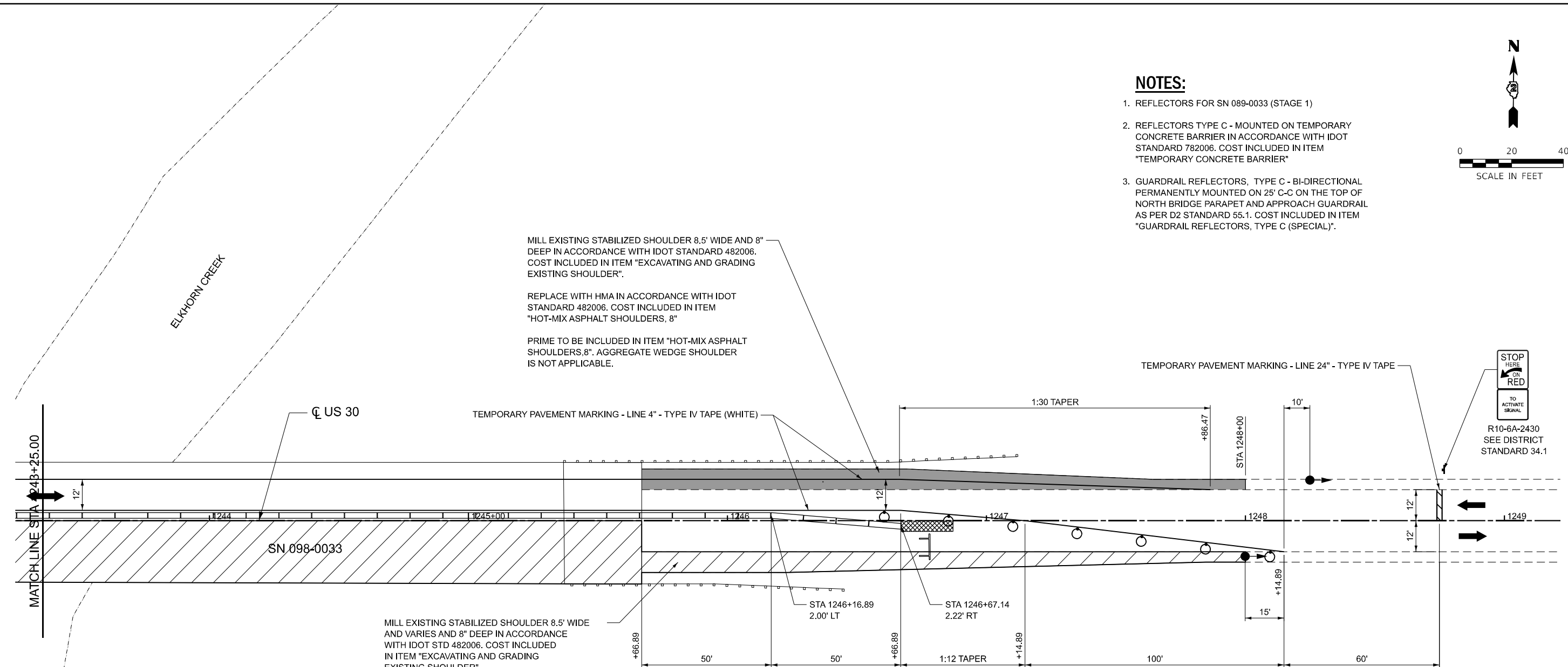
REPLACE WITH HMA IN ACCORDANCE WITH IDOT STANDARD 482006. COST INCLUDED IN ITEM "HOT-MIX ASPHALT SHOULDERS, 8"

PRIME TO BE INCLUDED IN ITEM "HOT-MIX ASPHALT SHOULDERS, 8". AGGREGATE WEDGE SHOULDER IS NOT APPLICABLE.

MILL EXISTING STABILIZED SHOULDER 8.5' WIDE AND VARIES AND 8" DEEP IN ACCORDANCE WITH IDOT STD 482006. COST INCLUDED IN ITEM "EXCAVATING AND GRADING EXISTING SHOULDER"

REPLACE WITH HMA IN ACCORDANCE WITH IDOT STD 482006. COST INCLUDED IN ITEM "HOT-MIX ASPHALT SHOULDERS, 8".

PRIME TO BE INCLUDED IN ITEM "HOT-MIX ASPHALT SHOULDERS, 8". AGGREGATE WEDGE SHOULDER IS NOT APPLICABLE.



LEGEND

- WORK ZONE
- IMPACT ATTENUATOR
- TRAFFIC SIGN
- VERTICAL PANEL
- TEMPORARY CONCRETE BARRIER
- TYPE II BARRICADE OR DRUM WITH STEADY BURN LIGHT
- TYPE II BARRICADE OR DRUM
- TYPE III BARRICADE
- DIRECTION OF TRAFFIC
- TEMPORARY TRAFFIC SIGNAL

MODEL: Unnamed Plan - Plan 3 (Sheet) FILE NAME: S:\2023\231006 PTB_206-23 D2 - KPF - Various Phase II for Bridge Rehab\W0 06\CADD\CADD Sheets\1264565-shstaging_01.dgn



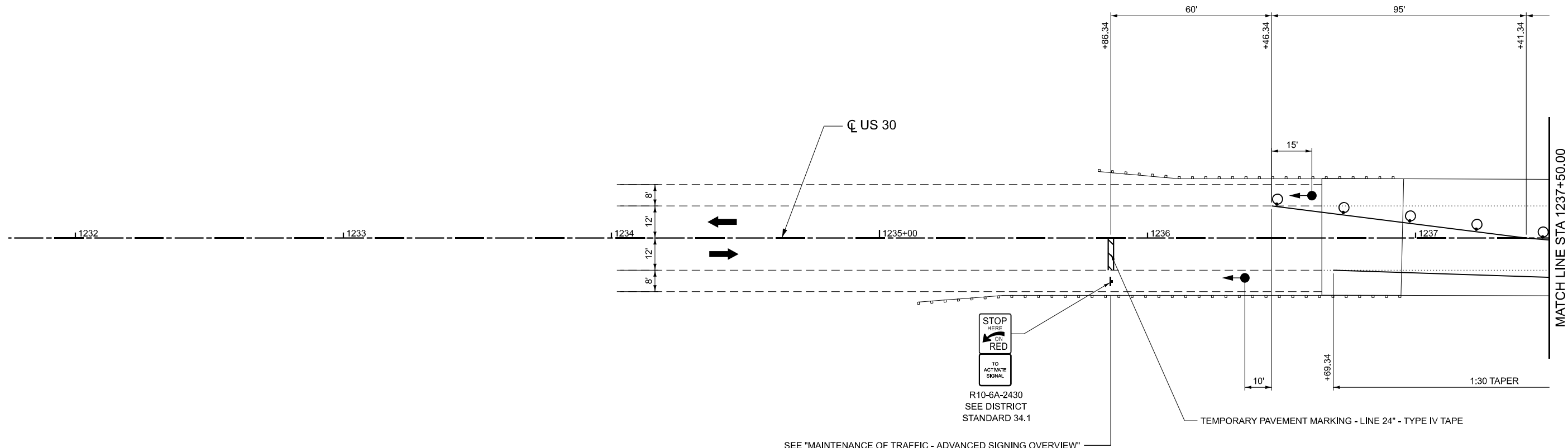
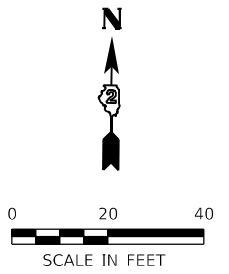
USER NAME = rgoertz	DESIGNED - RG	REVISED -
PLOT SCALE = 0.16666633' / in.	DRAWN - TO	REVISED -
PLOT DATE = 12/5/2023	CHECKED - FBN	REVISED -
	DATE -	REVISED -

**STATE OF ILLINOIS
DEPARTMENT OF TRANSPORTATION**

**US 30 OVER ELKHORN CREEK
MAINTAINANCE OF TRAFFIC - STAGE 1 PLANS**

SCALE: 1" = 20' SHEET 4 OF 8 SHEETS STA. 0+00.00 TO STA. 15+50.00

F.A.S. RTE.	SECTION	COUNTY	TOTAL SHEETS	SHEET NO.
1197	(110BR-1)BR	WHITESIDE	23	8
CONTRACT NO. 64S65				
ILLINOIS FED. AID PROJECT				



SEE "MAINTENANCE OF TRAFFIC - ADVANCED SIGNING OVERVIEW"

LEGEND	
	WORK ZONE
	IMPACT ATTENUATOR
	TRAFFIC SIGN
	VERTICAL PANEL
	TEMPORARY CONCRETE BARRIER
	TYPE II BARRICADE OR DRUM WITH STEADY BURN LIGHT
	TYPE II BARRICADE OR DRUM
	TYPE III BARRICADE
	DIRECTION OF TRAFFIC
	TEMPORARY TRAFFIC SIGNAL

MODEL: Unnamed Plan - Plan 1 [Sheet]
 FILE NAME: S:\2023\2311\005 PTB_206-23_D2 - KPFF - Various Phase II for Bridge Rehab\W0_06\CADD\CADD Sheets\1236\1236-565-sht-staging_02.dgn



USER NAME = rgoertz	DESIGNED - RG	REVISED -
PLOT SCALE = 0.16666633' / in.	DRAWN - TO	REVISED -
PLOT DATE = 12/5/2023	CHECKED - FBN	REVISED -
	DATE -	REVISED -

STATE OF ILLINOIS
DEPARTMENT OF TRANSPORTATION

US 30 OVER ELKHORN CREEK
MAINTENANCE OF TRAFFIC - STAGE 2 PLANS

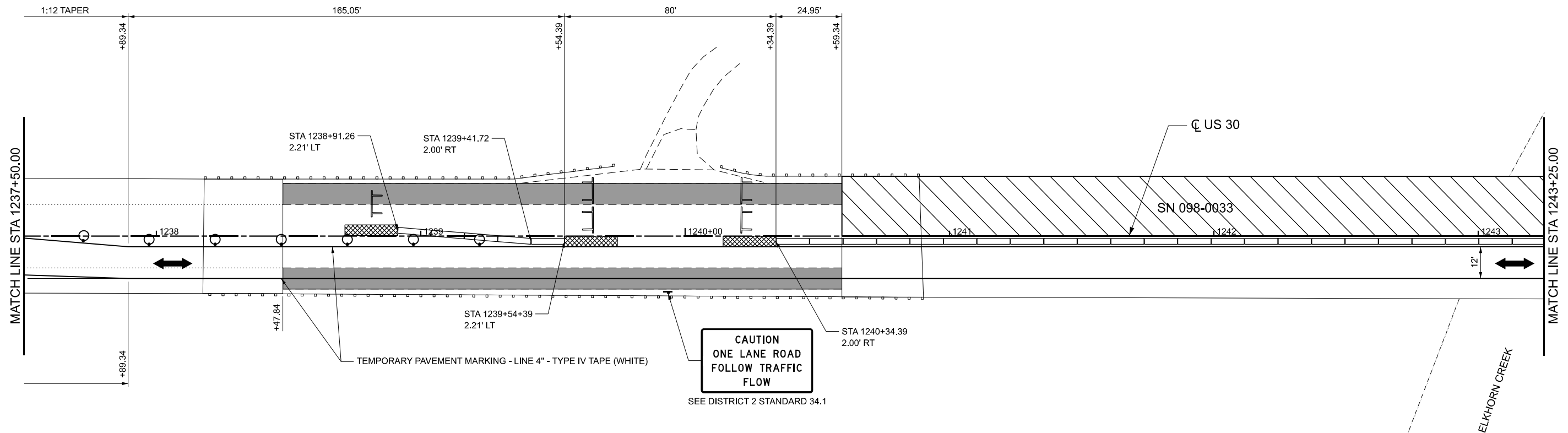
SCALE: 1" = 20' SHEET 5 OF 8 SHEETS STA. 1237+50.00 TO STA. 1243+25.00

F.A.S. RTE.	SECTION	COUNTY	TOTAL SHEETS	SHEET NO.
1197	(110BR-1)BR	WHITESIDE	23	9
CONTRACT NO. 64S65				
ILLINOIS FED. AID PROJECT				



NOTES:

1. REFLECTORS FOR SN 089-0033 (STAGE 2)
2. REFLECTORS TYPE C - MOUNTED ON TEMPORARY CONCRETE BARRIER IN ACCORDANCE WITH IDOT STANDARD 782006. COST INCLUDED IN ITEM "TEMPORARY CONCRETE BARRIER"
3. GUARDRAIL REFLECTORS, TYPE C - BI-DIRECTIONAL PERMANENTLY MOUNTED ON 25' C-C ON THE TOP OF SOUTH BRIDGE PARAPET AND APPROACH GUARDRAIL AS PER D2 STANDARD 55.1. COST INCLUDED IN ITEM "GUARDRAIL REFLECTORS, TYPE C (SPECIAL)".



LEGEND

	WORK ZONE
	IMPACT ATTENUATOR
	TRAFFIC SIGN
	VERTICAL PANEL
	TEMPORARY CONCRETE BARRIER
	TYPE II BARRICADE OR DRUM WITH STEADY BURN LIGHT
	TYPE II BARRICADE OR DRUM
	TYPE III BARRICADE
	DIRECTION OF TRAFFIC
	TEMPORARY TRAFFIC SIGNAL

MODEL: Unnamed Plan - Plan 2 (Sheet)
 FILE NAME: S:\2023\231005 FTB 206-23 D2 - KPF - Various Phase II for Bridge Rehab\W0 06\CADD\CADD Sheets\264565-sh2staging_02.dgn



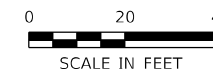
USER NAME = rgoertz	DESIGNED - RG	REVISED -
DRAWN - TO	REVISOR -	
PLOT SCALE = 0.16666633' / in.	CHECKED - FBN	REVISED -
PLOT DATE = 12/5/2023	DATE -	REVISED -

**STATE OF ILLINOIS
DEPARTMENT OF TRANSPORTATION**

**US 30 OVER ELKHORN CREEK
MAINTAINANCE OF TRAFFIC - STAGE 2 PLANS**

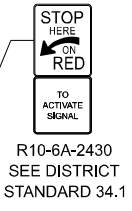
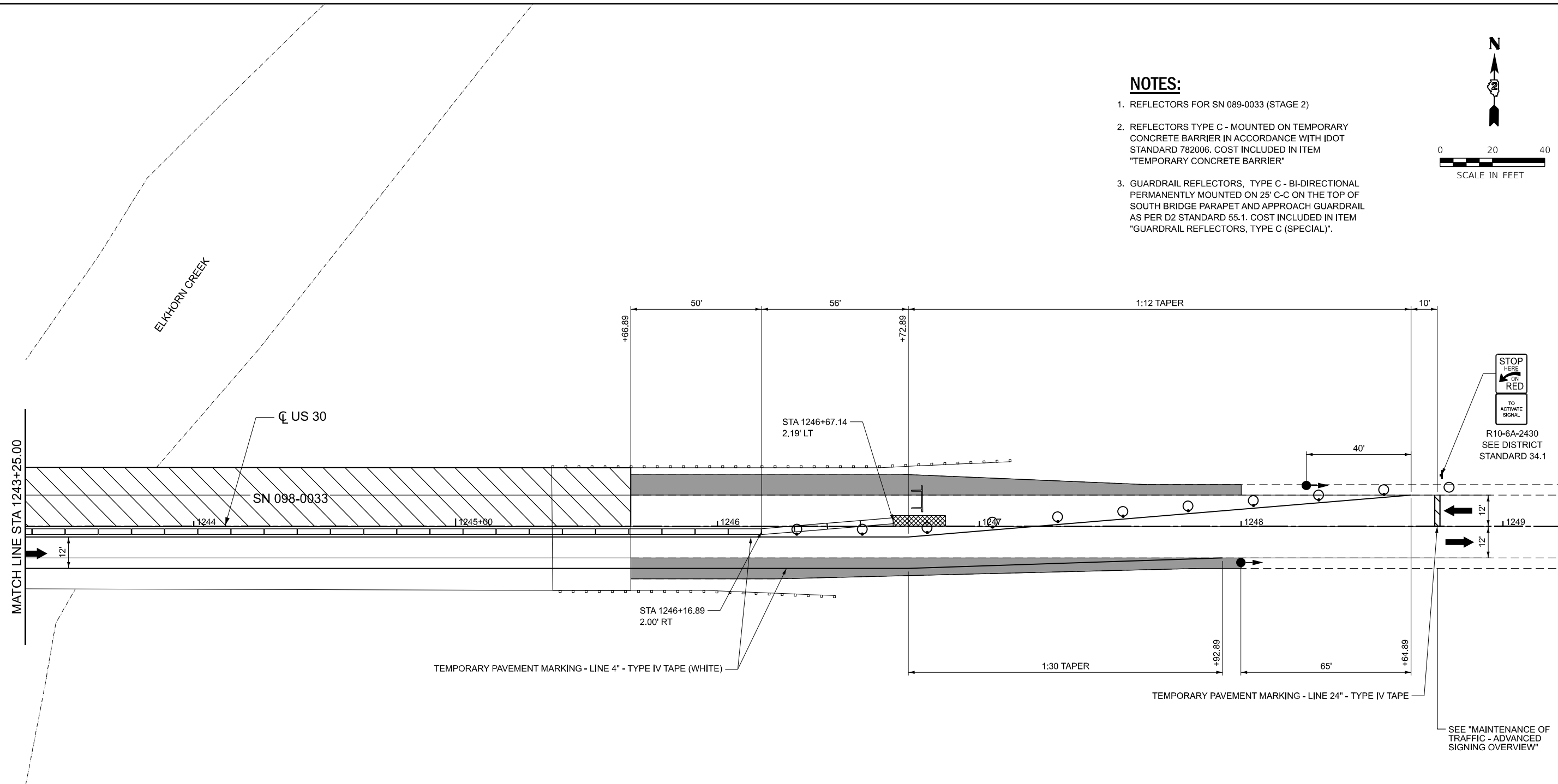
SCALE: 1" = 20' SHEET 6 OF 8 SHEETS STA. 1243+25.00 TO STA. 1249+00.00

F.A.S. RTE.	SECTION	COUNTY	TOTAL SHEETS	SHEET NO.
1197	(110BR-1)BR	WHITESIDE	23	10
CONTRACT NO. 64S65				
ILLINOIS FED. AID PROJECT				



NOTES:

1. REFLECTORS FOR SN 089-0033 (STAGE 2)
2. REFLECTORS TYPE C - MOUNTED ON TEMPORARY CONCRETE BARRIER IN ACCORDANCE WITH IDOT STANDARD 782006. COST INCLUDED IN ITEM "TEMPORARY CONCRETE BARRIER"
3. GUARDRAIL REFLECTORS, TYPE C - BI-DIRECTIONAL PERMANENTLY MOUNTED ON 25' C-C ON THE TOP OF SOUTH BRIDGE PARAPET AND APPROACH GUARDRAIL AS PER D2 STANDARD 55.1. COST INCLUDED IN ITEM "GUARDRAIL REFLECTORS, TYPE C (SPECIAL)".



SEE "MAINTENANCE OF TRAFFIC - ADVANCED SIGNING OVERVIEW"

LEGEND

- WORK ZONE
- IMPACT ATTENUATOR
- TRAFFIC SIGN
- VERTICAL PANEL
- TEMPORARY CONCRETE BARRIER
- TYPE II BARRICADE OR DRUM WITH STEADY BURN LIGHT
- TYPE II BARRICADE OR DRUM
- TYPE III BARRICADE
- DIRECTION OF TRAFFIC
- TEMPORARY TRAFFIC SIGNAL

MODEL: Unnamed Plan - Plan 3 (Sheet)
FILE NAME: S:\2023\231006 PTB_206-23 D2 - KPF - Various Phase II for Bridge Rehab\W0 06\CADD\CADD Sheets\1264565-shstaging_02.dgn



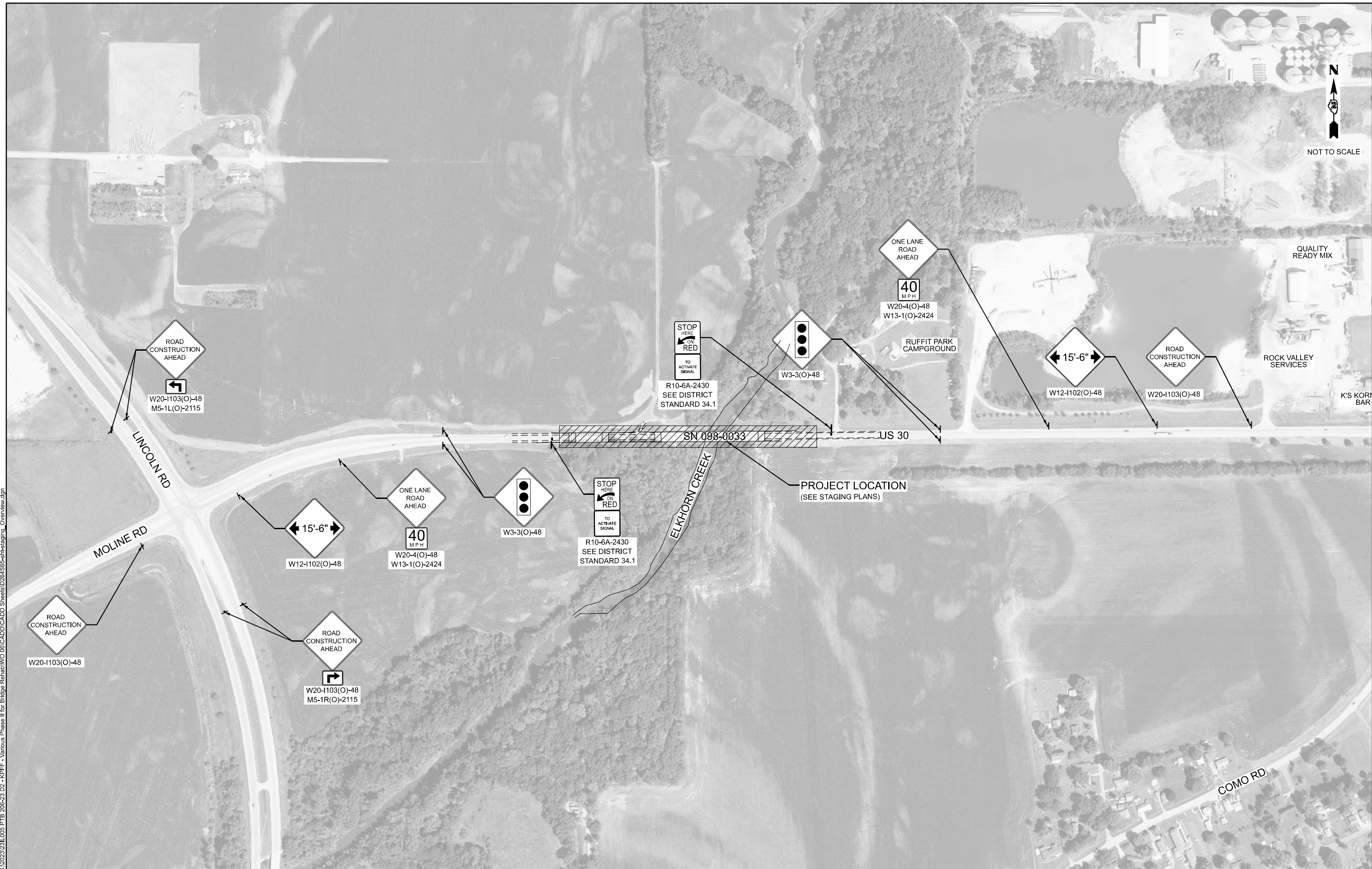
USER NAME = rgoertz	DESIGNED - RG	REVISED -
PLOT SCALE = 0.16666633' / in.	DRAWN - TO	REVISED -
PLOT DATE = 12/5/2023	CHECKED - FBN	REVISED -
	DATE -	REVISED -

**STATE OF ILLINOIS
DEPARTMENT OF TRANSPORTATION**

**US 30 OVER ELKHORN CREEK
MAINTENANCE OF TRAFFIC - STAGE 2 PLANS**

SCALE: 1" = 20' SHEET 7 OF 8 SHEETS STA. 0+00.00 TO STA. 15+50.00

F.A.S. RTE.	SECTION	COUNTY	TOTAL SHEETS	SHEET NO.
1197	(110BR-1)BR	WHITESIDE	23	11
CONTRACT NO. 64S65				
ILLINOIS FED. AID PROJECT				



MODEL: Unnamed Plan - Plan 1 [Sheet]
 FILE NAME: S:\2023\2311\005\PTB_206-23_D2 - KPFF - Various Phase II for Bridge Rehab\W0_06\CADD\CADD_Sheets\ID264565-sht-staging_Overview.dgn



USER NAME = rgoertz	DESIGNED - RG	REVISED -
PLOT SCALE = 0.16666633' / in.	DRAWN - RG	REVISED -
PLOT DATE = 12/5/2023	CHECKED - FBN	REVISED -
	DATE -	REVISED -

STATE OF ILLINOIS
DEPARTMENT OF TRANSPORTATION

US 30 OVER ELKHORN CREEK
MAINTENANCE OF TRAFFIC - ADVANCED SIGNING OVERVIEW

SCALE: NONE SHEET 8 OF SHEETS STA. 0+00.00 TO STA. 180+00.00

F.A.S. RTE.	SECTION	COUNTY	TOTAL SHEETS	SHEET NO.
1197	(110BR-1)BR	WHITESIDE	23	12
CONTRACT NO. 64S65				
ILLINOIS FED. AID PROJECT				

TOTAL BILL OF MATERIAL

ITEM	UNIT	TOTAL
* Acrylic Coat	Sq. Yd.	12
Deck Slab Repair (Partial)	Sq. Yd.	150
Deck Slab Repair (Full Depth, Type I)	Sq. Yd.	50
Structural Repair of Concrete <= 5"	Sq. Ft.	300

* On parapet repairs

SCOPE OF WORK

- (A) Deck Slab Repair
- (B) Repair Barrier Rail
- (C) Abutment Repairs

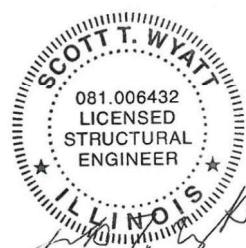
GENERAL NOTES

Plan dimensions and details relative to the existing plans are subject to nominal construction variations. The Contractor shall field verify existing dimensions and details affecting new construction and make necessary approved adjustments prior to construction or ordering materials. Such variations shall not be cause for additional compensation for a change in scope of the work, however, the Contractor will be paid for the quantity actually furnished at the unit price bid for the work.

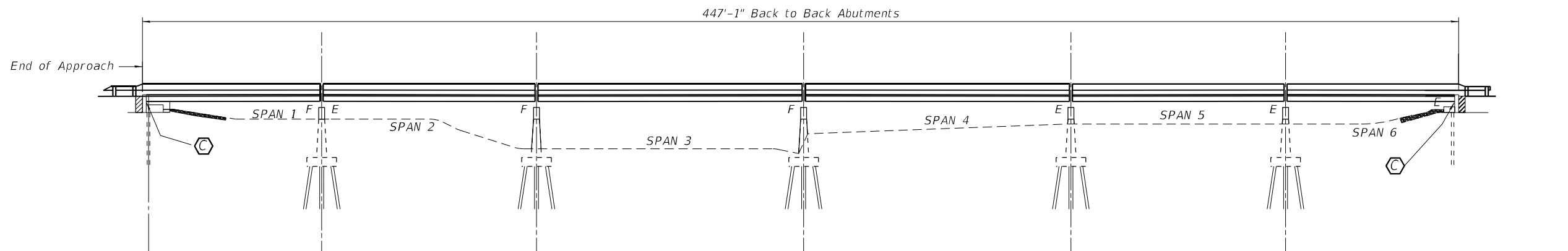
Existing reinforcement bars extending into the removal area shall be cleaned, straightened and incorporated into the new construction. Any reinforcement bars that are damaged during concrete removal shall be replaced with an approved bar splicer or anchorage system. Cost included with concrete removal.

Traffic will be staged during construction.

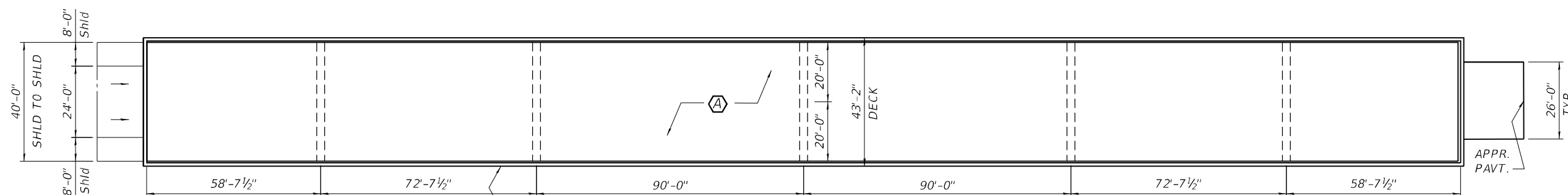
The Contractor shall contact IDOT District 2 Engineer at 815-284-2271 a minimum of 72 hours before beginning work.



1-22-24
Exp. 11-30-24



ELEVATION



PLAN

MODEL: Default
FILE NAME: \\kpf.com\dfs\B\p\p\12300583 (DOT) WO 6 64565\02_Design (MS) 64565-10-Plan & Elev.dgn

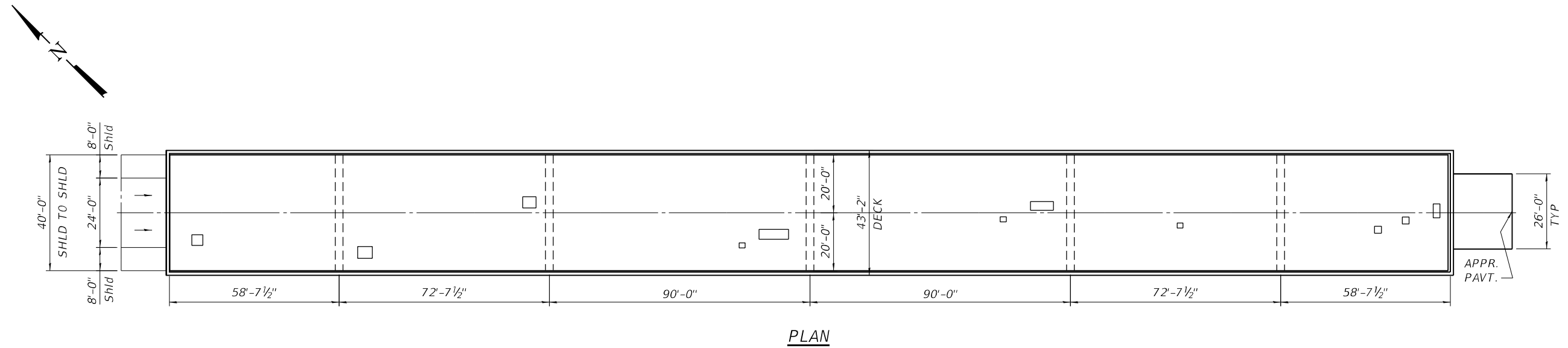


USER NAME =	DESIGNED -	REVISED -
PLOT SCALE =	CHECKED -	REVISED -
PLOT DATE =	DRAWN -	REVISED -
	CHECKED -	REVISED -

STATE OF ILLINOIS
DEPARTMENT OF TRANSPORTATION

SN 098-0033 US 30 OVER ELKHORN CREEK
PLAN AND ELEVATION

F.A.S. RTE. 1197	SECTION 110BR-1BR	COUNTY WHITESIDE	TOTAL SHEETS 23	SHEET NO. 13
SN 098-0033		CONTRACT NO. 64565		



PLAN

Legend

□ Deck Slab Repair

NOTES:

PATCHES SHOWN ARE POTENTIAL AREAS OF DECK SLAB REPAIR.
ACTUAL AREAS TO BE DETERMINED BY THE ENGINEER IN THE FIELD.

Date of Survey: 9/25/2023

MODEL: Default
FILE NAME: \\kpf.com\dfs\Bridges\2300583 (DOT WO 6 64S65)\02_Design (MS)\64S66-14 - Deck Repairs.dgn

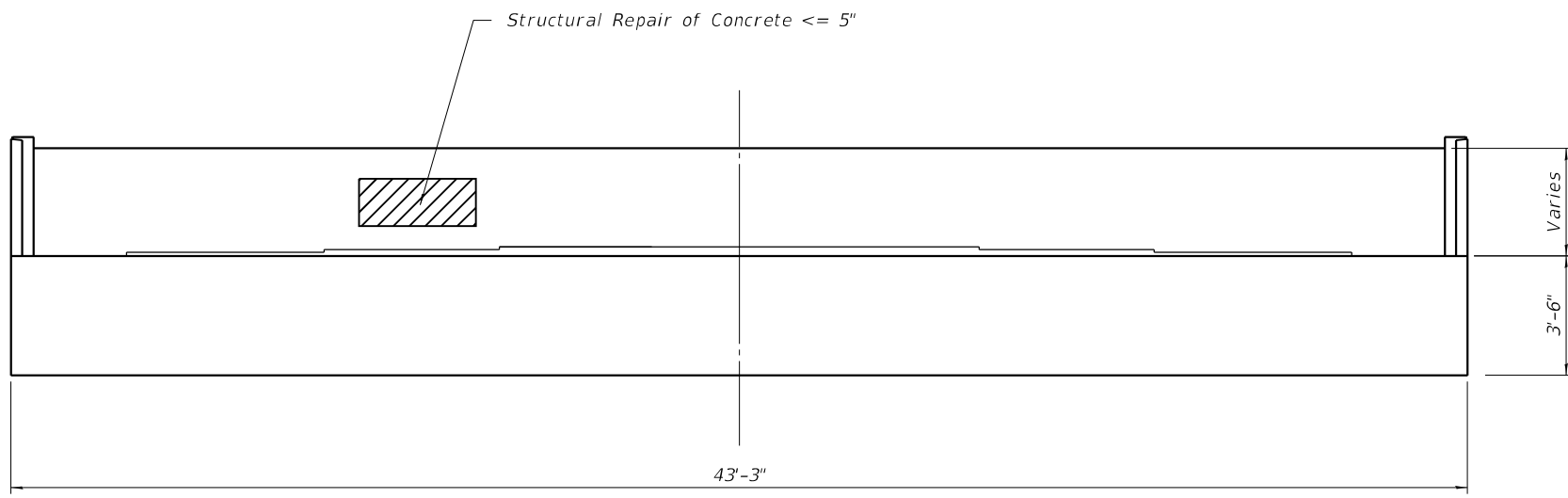


USER NAME =	DESIGNED -	REVISED -
PLOT SCALE =	CHECKED -	REVISED -
PLOT DATE =	DRAWN -	REVISED -
	CHECKED -	REVISED -

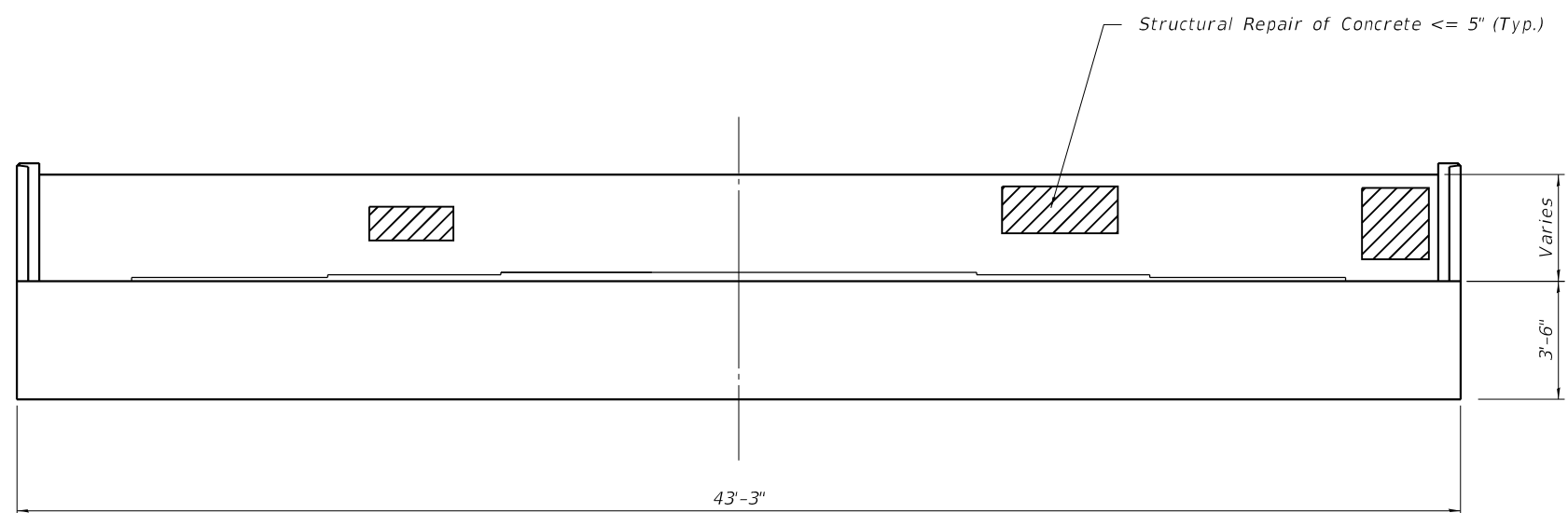
STATE OF ILLINOIS
DEPARTMENT OF TRANSPORTATION

SN 098-0033 US 30 OVER ELKHORN CREEK
DECK REPAIRS

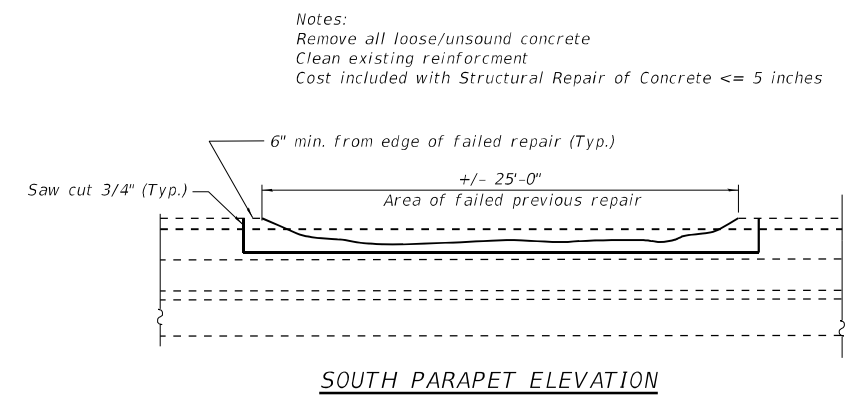
F.A.S RTE. 1197	SECTION (110BR-1)BR	COUNTY WHITESIDE	TOTAL SHEETS 23	SHEET NO. 14
SN 098-0033		CONTRACT NO. 64S65		
ILLINOIS FED. AID PROJECT				



WEST ABUTMENT



EAST ABUTMENT



MODEL: Default
 FILE NAME: \\kpf.com\dfs\Bridges\2300583 (DOT WO 6 64S65)02_Design (MS)64S66-15 - Abutment Repairs.dgn
 12/6/2023 7:48:10 AM

kpff
 1500 Sherman Ave, Suite 1020
 Evanston, IL 60201
 847-859-7790
 www.kpff.com

USER NAME =	DESIGNED -	REVISED -
PLOT SCALE =	CHECKED -	REVISED -
PLOT DATE =	DRAWN -	REVISED -
	CHECKED -	REVISED -

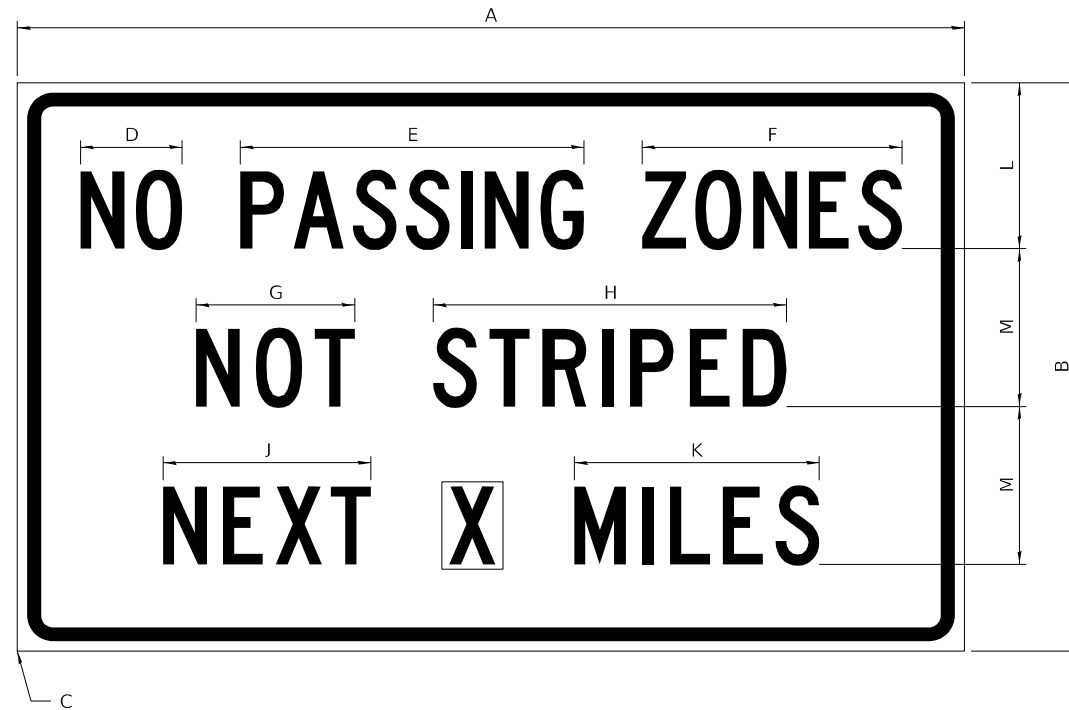
STATE OF ILLINOIS
DEPARTMENT OF TRANSPORTATION

SN 098-0033 US 30 OVER ELKHORN CREEK
BARRIER AND ABUTMENT REPAIRS

F.A.S RTE. 1197	SECTION (110BR-1)BR	COUNTY WHITESIDE	TOTAL SHEETS 23	SHEET NO. 15
SN 098-0033		CONTRACT NO. 64S65		
ILLINOIS FED. AID PROJECT				

WORK ZONE SIGN DETAILS (34.1)

ILLINOIS STANDARD G20-I100



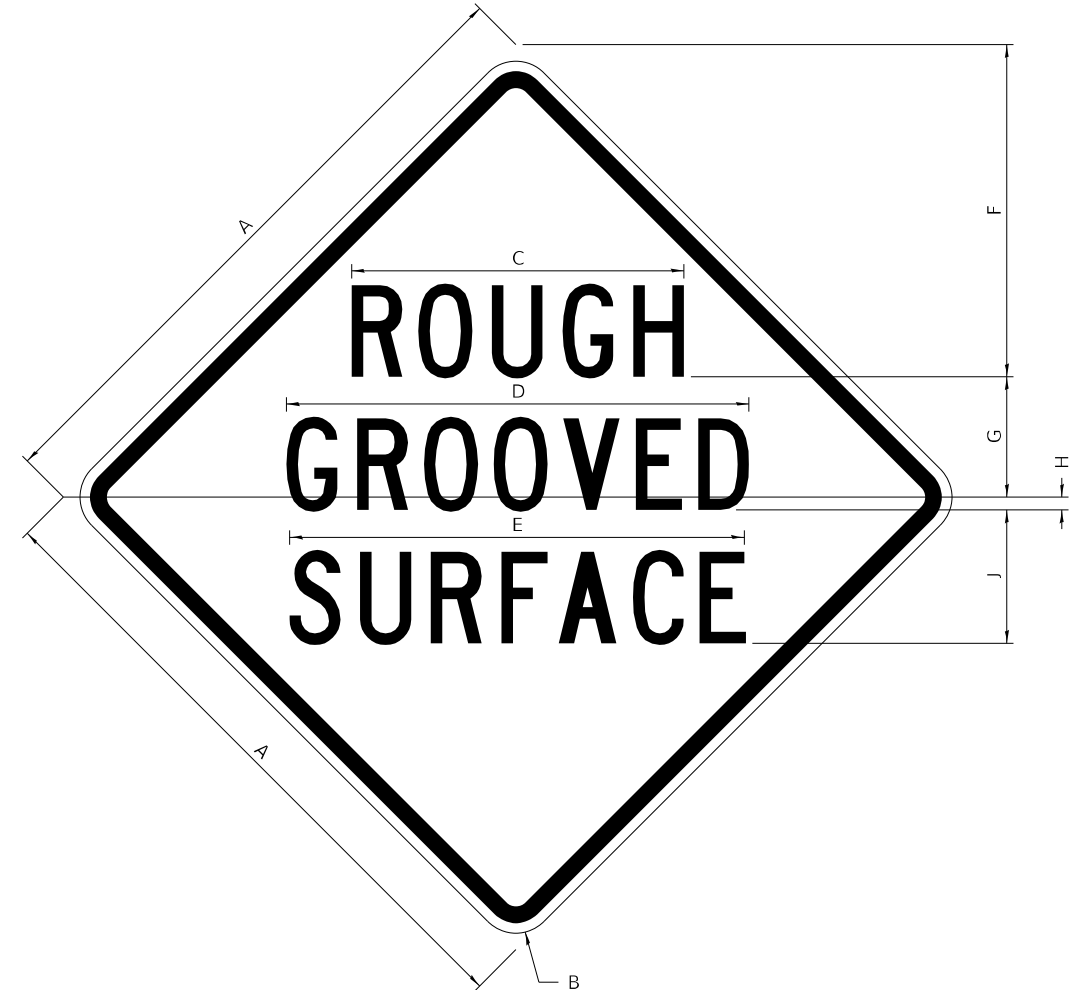
COLOR LEGEND AND BORDER BACKGROUND BLACK ORANGE NON-REFLECTORIZED REFLECTORIZED

SIGN SIZE	DIMENSIONS											
	A	B	C	D	E	F	G	H	J	K	L	M
60 x 36	60.00	36.00	2.25	6.4	21.80	16.40	10.00	22.40	13.20	15.50	10.50	10.00

SIGN SIZE	SERIES BY LINE			MARGIN	BORDER
	1	2	3		
60 x 36	5C	5C	5C	0.625	0.875

Sign not to scale

ILLINOIS STANDARD W8-I107



COLOR LEGEND AND BORDER BACKGROUND BLACK ORANGE NON-REFLECTORIZED REFLECTORIZED

SIGN SIZE	DIMENSIONS								
	A	B	C	D	E	F	G	H	J
48 x 48	48.00	3.00	25.00	34.80	34.20	24.94	9.00	1.00	10.00

SIGN SIZE	SERIES BY LINE			MARGIN	BORDER
	1	2	3		
48 x 48	7C	7C	7C	1.250	0.750

Sign not to scale

GENERAL NOTES

All work to furnish and install these signs shall be included in the cost of the specified traffic control standards and shall not be paid separately.

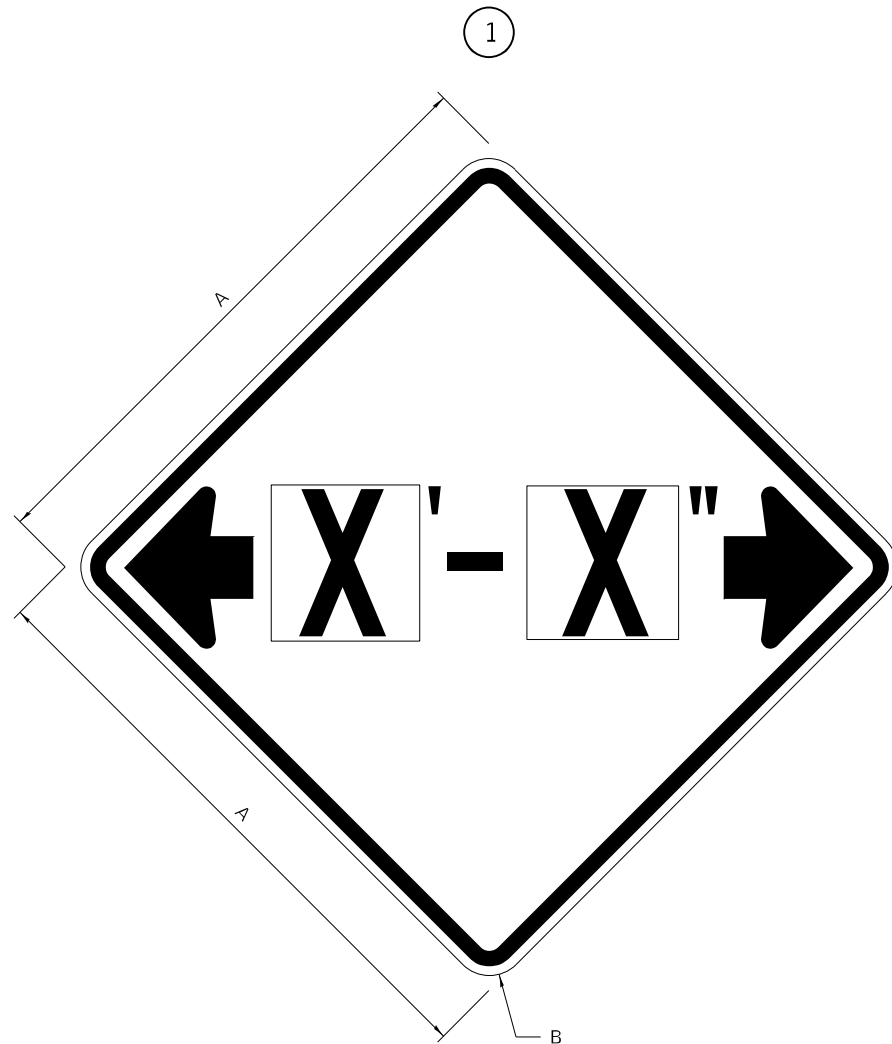
All Illinois Standard signs shall conform to the latest edition of the "Illinois Standard Highway Signs Book" in effect on the date of invitation for bids.

Signs shall meet the applicable portions of Sections 701 and 720 of the Standard Specifications.

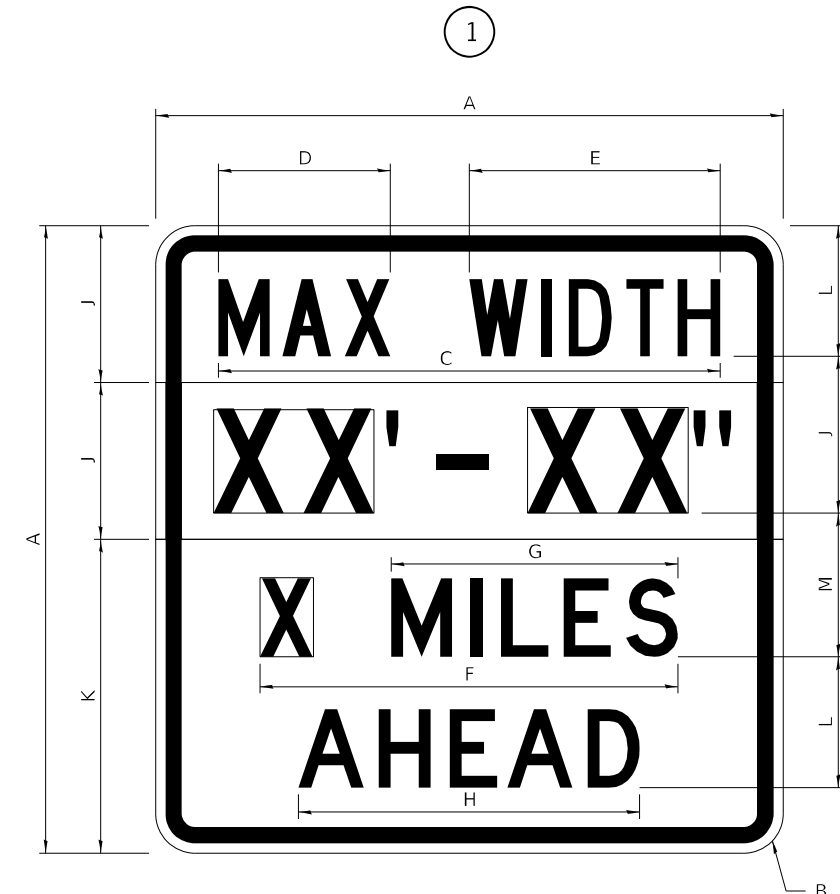
All dimensions are in inches unless otherwise noted.

WORK ZONE SIGN DETAILS (34.1)

ILLINOIS STANDARD W12-I102



ILLINOIS STANDARD W12-I103



GENERAL NOTES

All work to furnish and install these signs shall be included in the cost of the specified traffic control standards and shall not be paid separately.

All Illinois Standard signs shall conform to the latest edition of the "Illinois Standard Highway Signs Book" in effect on the date of invitation for bids.

Signs shall meet the applicable portions of Sections 701 and 720 of the Standard Specifications.

All dimensions are in inches unless otherwise noted.

COLOR LEGEND AND BORDER BACKGROUND BLACK FL ORANGE NON-REFLECTORIZED REFLECTORIZED

SIGN SIZE	DIMENSIONS	
	A	B
48 x 48	48.00	3.00

① Illinois Standard signs W12-I102 and W12-I103 shall be used as described in the special provisions.

SIGN SIZE	SERIES BY LINE	MARGIN	BORDER
	1		
48 x 48	12C	0.750	1.250

Sign not to scale

COLOR LEGEND AND BORDER BACKGROUND BLACK WHITE NON-REFLECTORIZED REFLECTORIZED REFLECTORIZED

SIGN SIZE	DIMENSIONS											
	A	B	C	D	E	F	G	H	J	K	L	M
48 x 48	48.00	3.00	38.40	13.20	19.20	32.00	22.00	26.20	12.00	24.00	10.00	11.00

SIGN SIZE	SERIES BY LINE				MARGIN	BORDER
	1	2	3	4		
48 x 48	6C	8D	6D	6D	0.750	1.250

Sign not to scale

XX'-XX" WIDTH AND X MILES ARE VARIABLE TOP AND BOTTOM OF BACKGROUND WHITE

USER NAME = rgoertz	DESIGNED -	REVISED - 3-02-16
FILE NAME: S:\2023\231005 PTB 206-23 D2 - KPF - Various Phase II for Bridge Rehab\WO 06\CADD\CADD\DRAWN\264565-shi-Details_D2.dgn	DRAWN -	REVISED -
PLOT SCALE = 0.16666633 1 / in.	CHECKED -	REVISED -
PLOT DATE = 12/5/2023	DATE -	REVISED -

STATE OF ILLINOIS
DEPARTMENT OF TRANSPORTATION

REGION 2 / DISTRICT 2 STANDARD

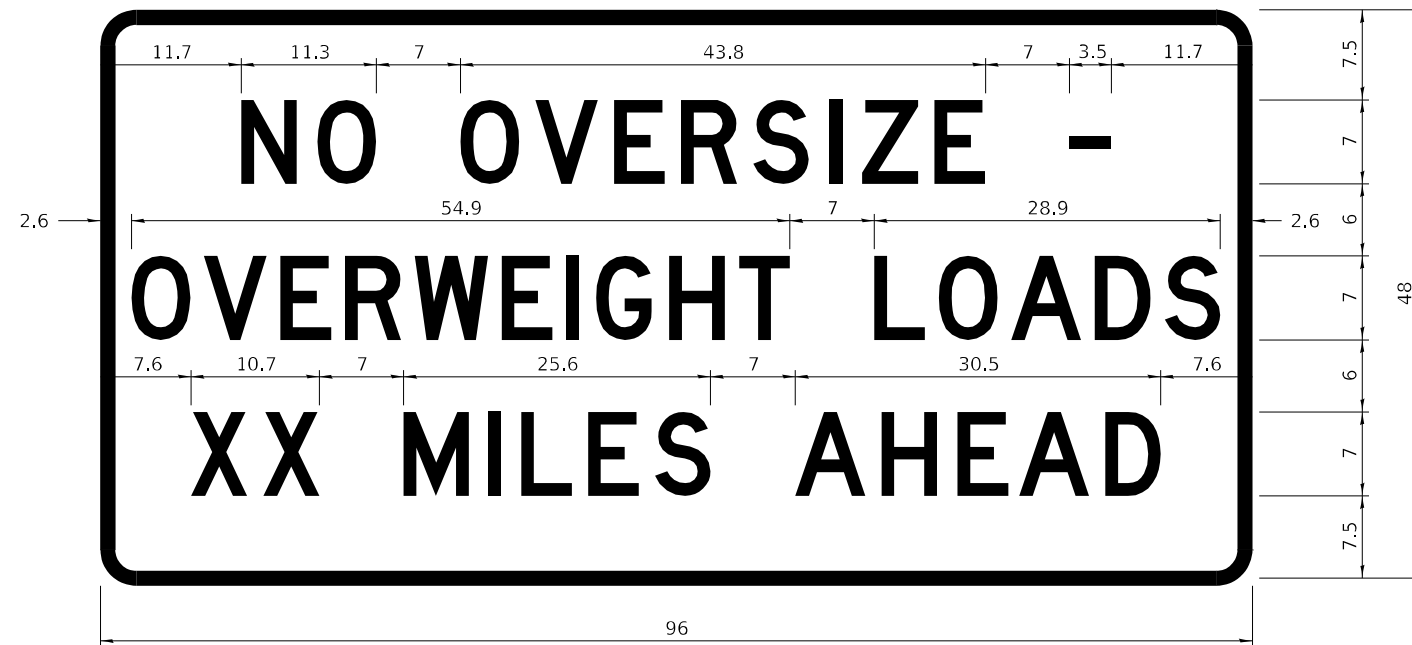
SCALE: NONE SHEET 2 OF 4 SHEETS STA. TO STA.

F.A.S. RTE.	SECTION	COUNTY	TOTAL SHEETS	SHEET NO.
1197	(110BR-1)BR	WHITESIDE	23	17
CONTRACT NO. 64565			ILLINOIS FED. AID PROJECT	

WORK ZONE SIGN DETAILS (34.1)

ROAD CLOSED TO OVERSIZED LOADS

STOP LINE SIGN FOR TEMPORARY SIGNALS



COLOR LEGEND AND BORDER BACKGROUND BLACK ORANGE NON-REFLECTORIZED REFLECTORIZED

COLOR LEGEND AND BORDER BACKGROUND BLACK WHITE NON-REFLECTORIZED REFLECTORIZED

Permit Loads - Loads Over 13 Feet; 3.0" Radius, 1.3" Border;
 [NO OVERSIZE -] D; [OVERWEIGHT LOADS] D 85% spacing; [XX MILES AHEAD] D;
 Table of letter and object lefts.

SIGN SIZE	SERIES BY LINE		
	1	2	3
24 x 24	4C	4C	4C

Sign not to scale

N	O	O	V	E	R	S	I	Z	E	-
11.7	18.1	30.0	36.2	42.8	48.4	54.4	60.7	63.5	69.5	80.8

O	V	E	R	W	E	I	G	H	T	L	O	A	D	S
2.6	8.6	15.0	20.4	26.2	33.4	38.8	41.3	47.4	53.2	64.5	69.9	75.9	82.9	88.7

X	X	M	I	L	E	S	A	H	E	A	D
7.6	13.6	25.3	32.3	35.1	40.6	46.2	57.9	65.1	71.4	76.6	83.7

Sign not to scale

GENERAL NOTES

All work to furnish and install these signs shall be included in the cost of the specified traffic control standards and shall not be paid separately.

All Illinois Standard signs shall conform to the latest edition of the "Illinois Standard Highway Signs Book" in effect on the date of invitation for bids.

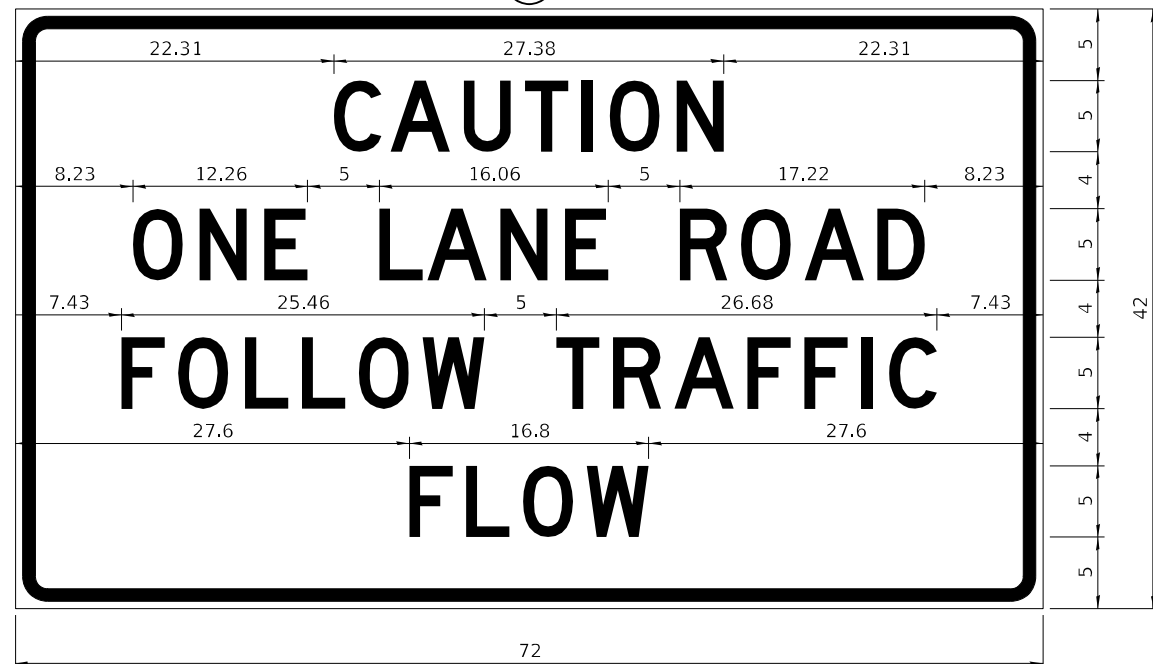
Signs shall meet the applicable portions of Sections 701 and 720 of the Standard Specifications.

All dimensions are in inches unless otherwise noted.

**ENTRANCE SIGN FOR USE
WITH TEMPORARY SIGNALS**

WORK ZONE SIGN DETAILS (34.1)

2



COLOR LEGEND AND BORDER BACKGROUND BLACK ORANGE NON-REFLECTORIZED REFLECTORIZED

2.25" Radius, 0.88" Border, 0.50" Indent;
[CAUTION] D; [ONE LANE ROAD] D;
[FOLLOW TRAFFIC] D; [FLOW] D

2 This sign shall be installed at entrances located between the temporary signals as shown in the staging plans.

Table Of Widths And Spaces

22.31	C	3.36	0.62	A	4.18	0.94	U	3.36	0.94	T	3.04	0.94	I	0.78	1.17	O	3.52	1.17	N	3.36	22.31
-------	---	------	------	---	------	------	---	------	------	---	------	------	---	------	------	---	------	------	---	------	-------

8.23	O	3.51	1.17	N	3.36	1.18	E	3.04
------	---	------	------	---	------	------	---	------

5.00	L	3.05	0.31	A	4.18	0.94	N	3.36	1.17	E	3.05
------	---	------	------	---	------	------	---	------	------	---	------

5.00	R	3.36	0.93	O	3.52	0.94	A	4.18	0.93	D	3.36	8.23
------	---	------	------	---	------	------	---	------	------	---	------	------

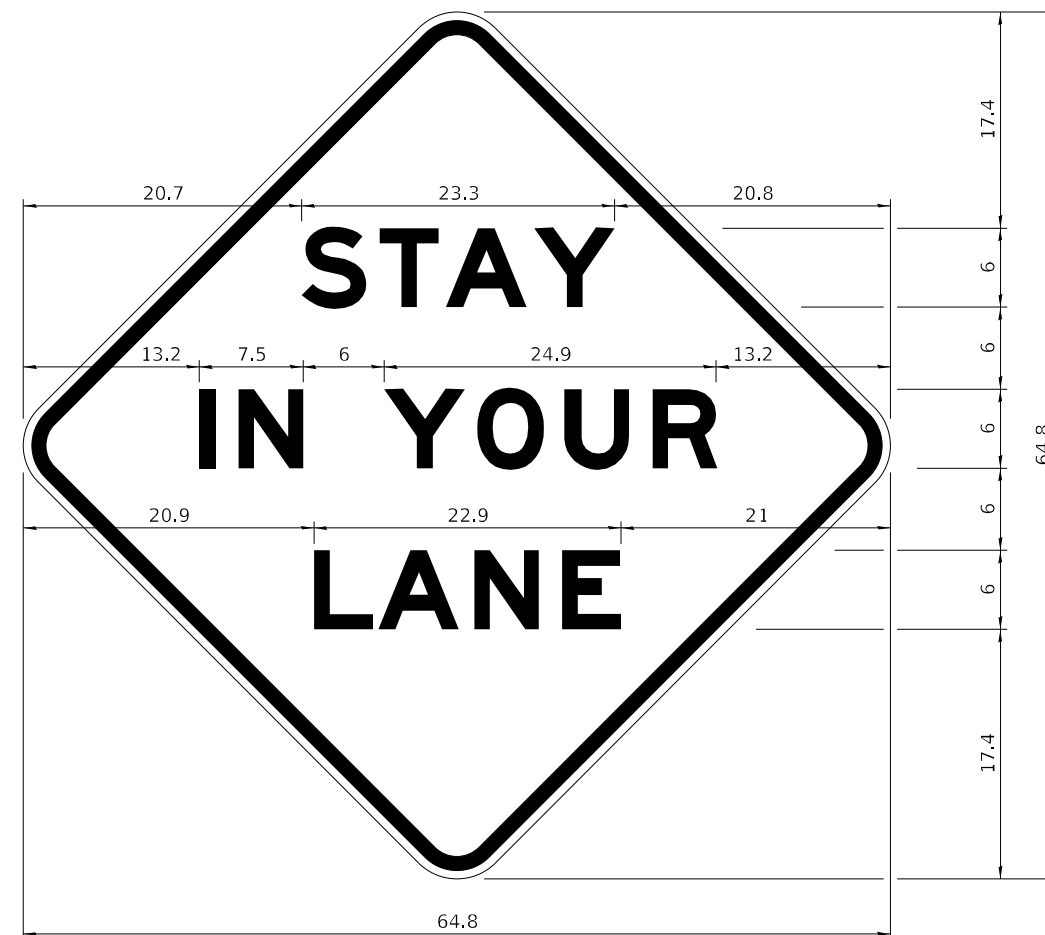
7.43	F	3.04	0.94	O	3.52	1.17	L	3.04	0.94	L	3.05	0.94	O	3.51	0.94	W	4.37
------	---	------	------	---	------	------	---	------	------	---	------	------	---	------	------	---	------

5.00	T	3.05	0.94	R	3.36	0.94	A	4.18	0.93	F	3.05	0.94	F	3.04	0.94	I	0.78	1.18	C	3.35	7.43
------	---	------	------	---	------	------	---	------	------	---	------	------	---	------	------	---	------	------	---	------	------

27.60	F	3.05	0.94	L	3.04	0.94	O	3.52	0.93	W	4.38	27.60
-------	---	------	------	---	------	------	---	------	------	---	------	-------

Sign not to scale

STAY IN YOUR LANE



COLOR LEGEND AND BORDER BACKGROUND BLACK ORANGE NON-REFLECTORIZED REFLECTORIZED

48.0" across sides 3.8" Radius, 1.0" Border, 0.6" Indent;
"STAY" E Mod; "IN YOUR" E Mod; "LANE" E Mod;

Table of Letter and Object Lefts

S	T	A	Y
20.7	26.8	31.6	38.0

I	N	Y	O	U	R
13.2	15.9	26.7	33.9	40.5	46.8

L	A	N	E
20.9	25.8	33.1	39.4

Sign not to scale

GENERAL NOTES

All work to furnish and install these signs shall be included in the cost of the specified traffic control standards and shall not be paid separately.

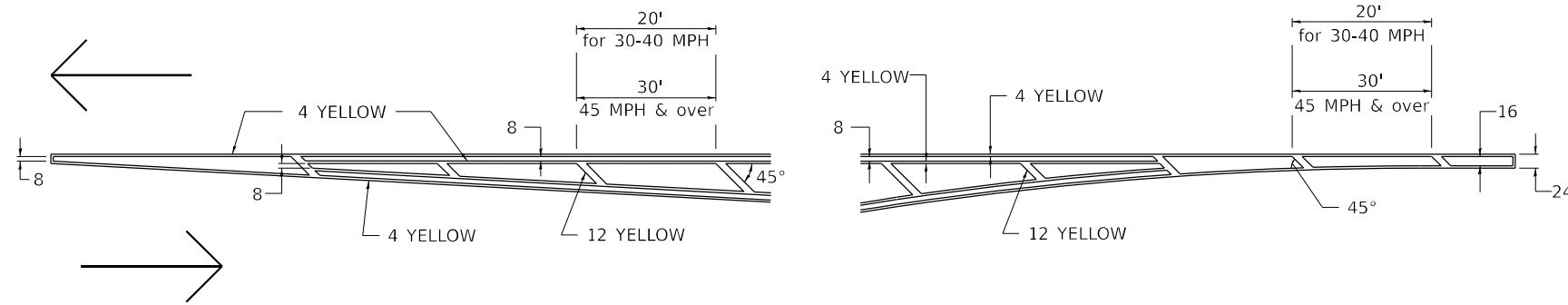
All Illinois Standard signs shall conform to the latest edition of the "Illinois Standard Highway Signs Book" in effect on the date of invitation for bids.

Signs shall meet the applicable portions of Sections 701 and 720 of the Standard Specifications.

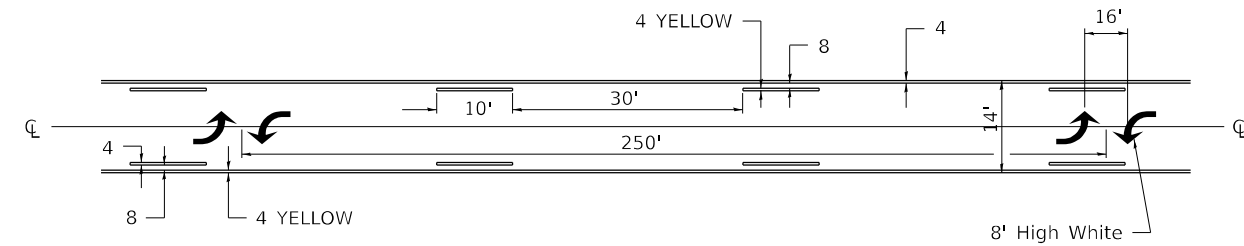
All dimensions are in inches unless otherwise noted.

TYPICAL PAVEMENT MARKINGS (41.1)

TYPICAL PAVEMENT MARKING FOR FLUSH MEDIAN AT LEFT TURN LANE

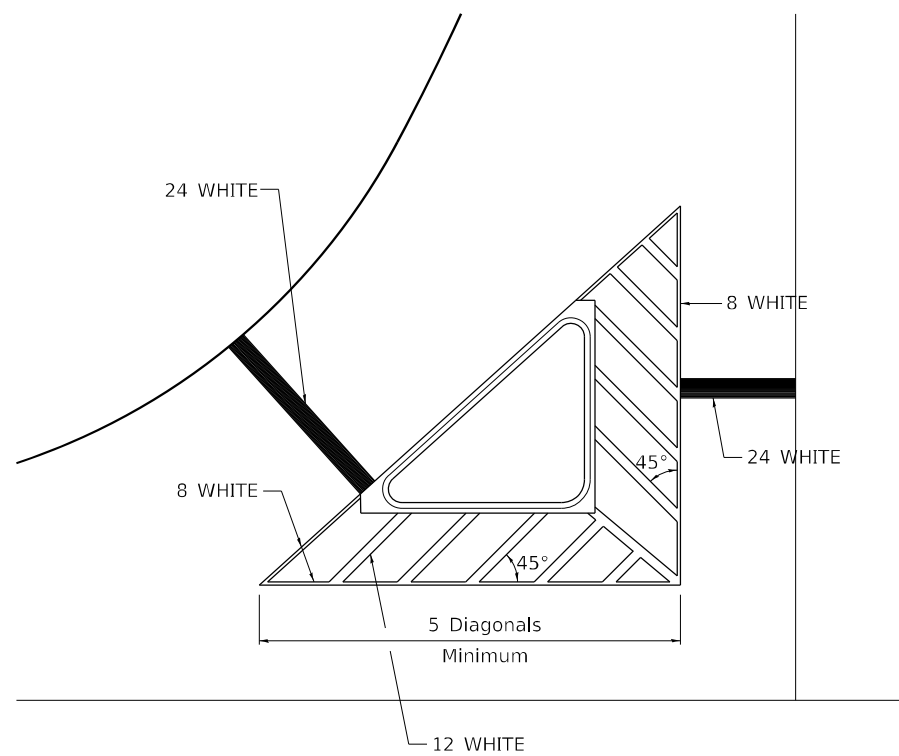


MEDIAN PAVEMENT MARKING



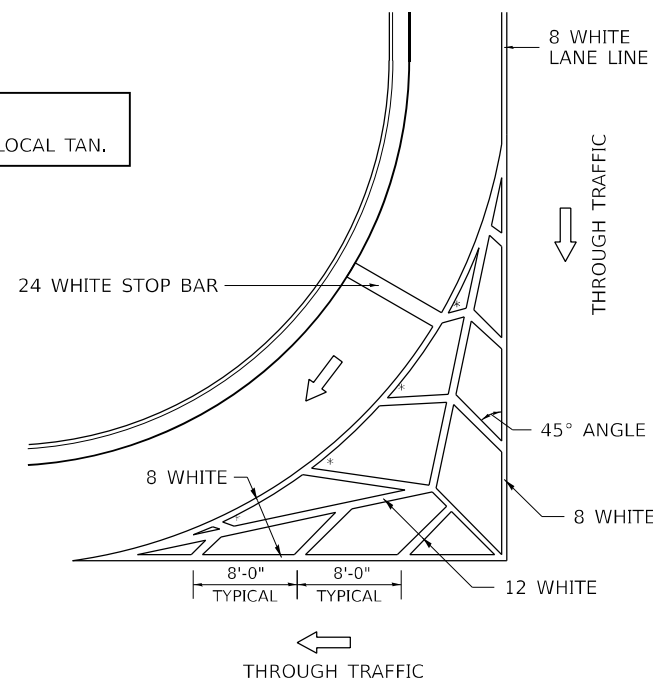
** ALL DIMENSIONS ARE IN INCHES UNLESS OTHERWISE NOTED.

TYPICAL ISLAND OFFSET SHOULDER WIDTH



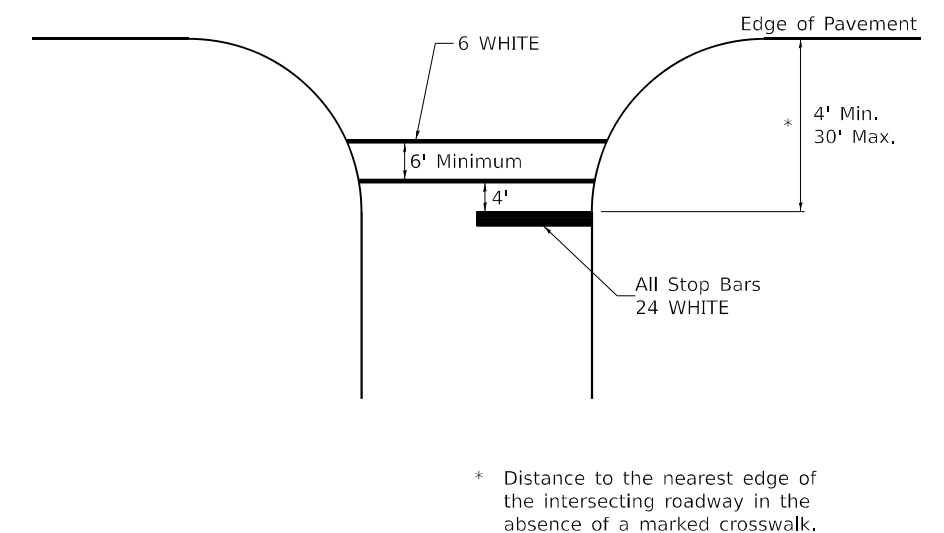
TYPICAL MARKING FOR PAINTED ISLANDS

NOTE:
* 45° TO LOCAL TAN.



STANDARD CROSSWALK MARKING

See Schedules for Locations

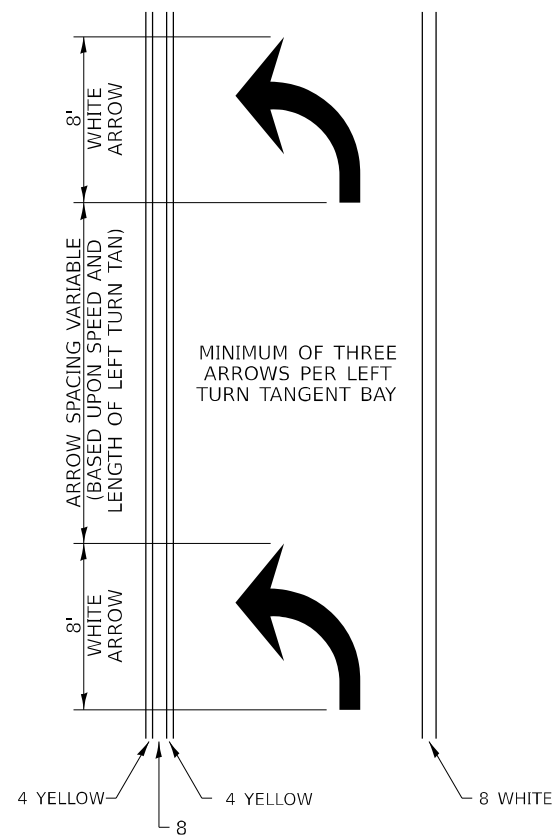


* Distance to the nearest edge of the intersecting roadway in the absence of a marked crosswalk.

FILE NAME: S:\2023\23IL005 PTB 206-23 D2 - KPFF - Various Phase II for Bridge Rehab\WO 08\CADD\CADD\DRAWING\264565-shi-Details_D2.dgn	USER NAME = rgoertz	DESIGNED -	REVISED - 6-27-14	STATE OF ILLINOIS DEPARTMENT OF TRANSPORTATION	REGION 2 / DISTRICT 2 STANDARD			F.A.S. RTE.	SECTION	COUNTY	TOTAL SHEETS	SHEET NO.
	PLOT SCALE = 2,000' / in.	CHECKED -	REVISED - 3-05-12					1197	(110BR-1)BR	WHITESIDE	23	20
PLOT DATE = 12/5/2023	DATE -	REVISED -		SCALE:	SHEET 1 OF 3 SHEETS	STA.	TO STA.	ILLINOIS FED. AID PROJECT CONTRACT NO. 64565				

TYPICAL PAVEMENT MARKINGS (41.1)

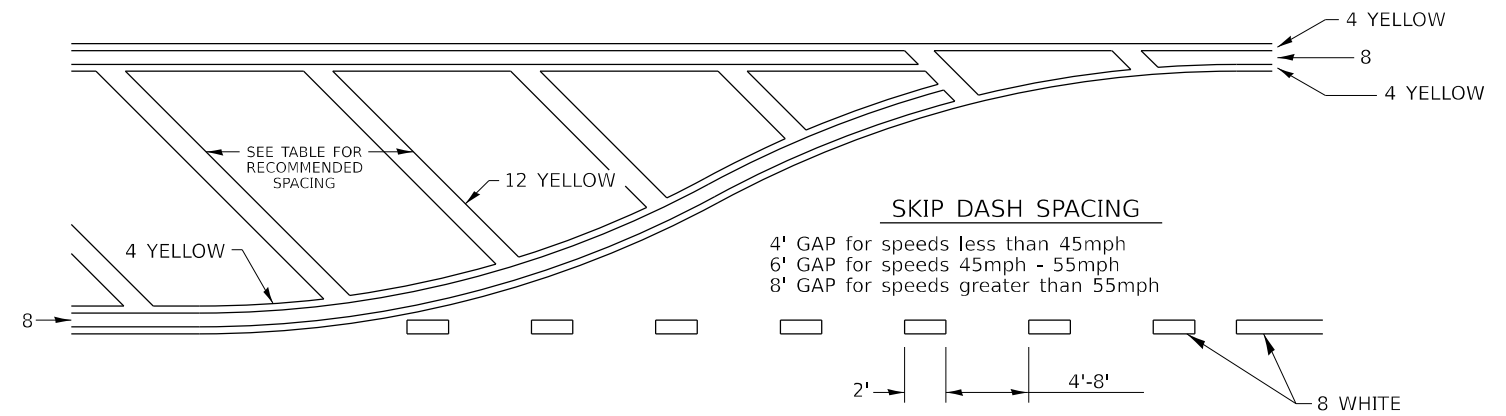
ARROW LAYOUT



- ◀ ONE-WAY AMBER MARKER
- ◁ ONE-WAY CRYSTAL MARKER
- ◆ TWO-WAY AMBER MARKER

ALL DIMENSIONS ARE IN INCHES UNLESS OTHERWISE NOTED.

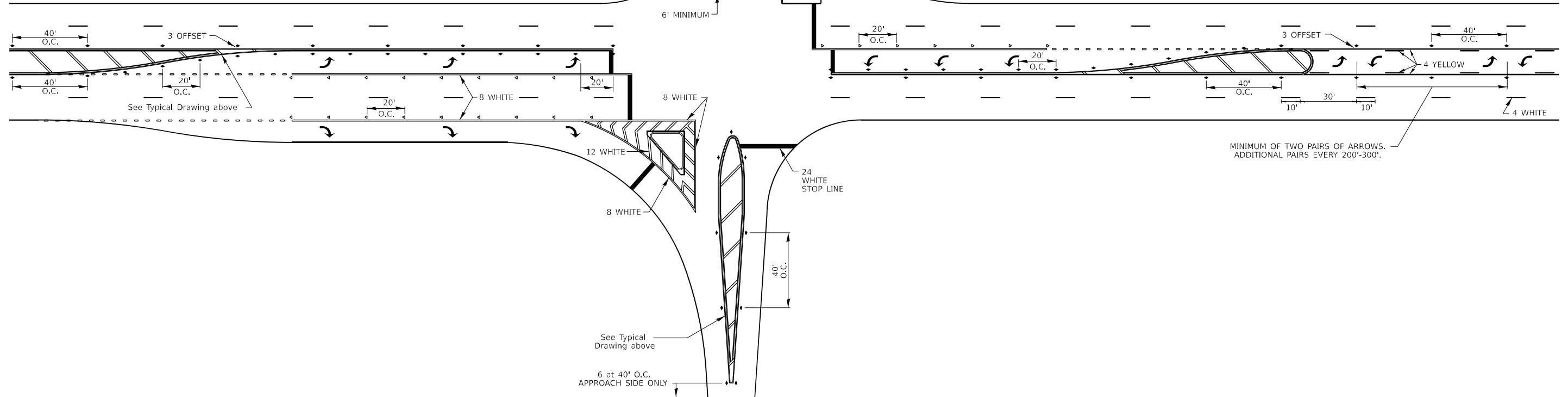
TYPICAL PAVEMENT MARKING FOR FLUSH MEDIAN



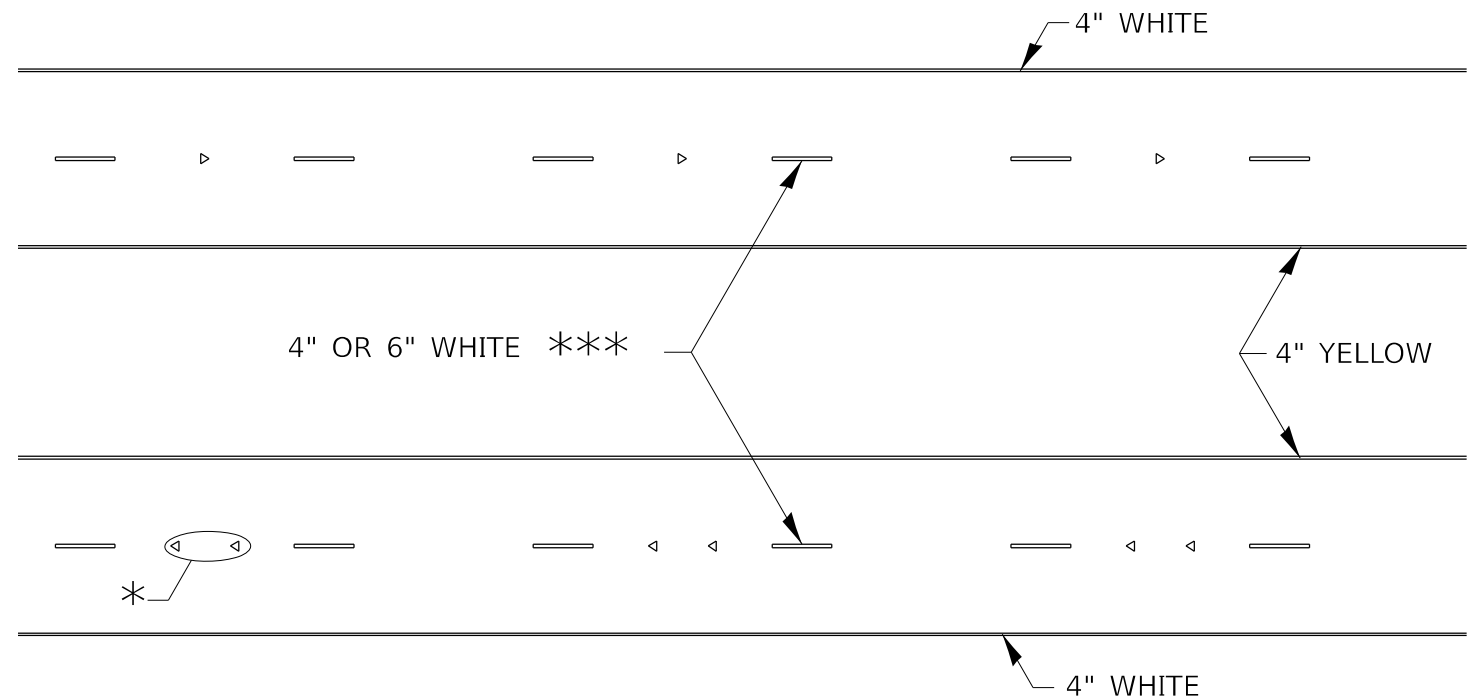
RECOMMENDED SPACING BETWEEN DIAGONALS (IN FEET)

Speed Limit Range	Continuous Median Area	Intersection Channelization	Objects (Islands)
less than 30MPH	50'	15'	10'
30-40MPH	75'	20'	15'
45MPH & over	75'	30'	20'

NOTE: if the spacing recommended in the Table does not permit at least ve diagonal lines in the area being marked, the spacing from the next lowest speed range should be used. The recommended spacing is measured parallel to the pavement center line.

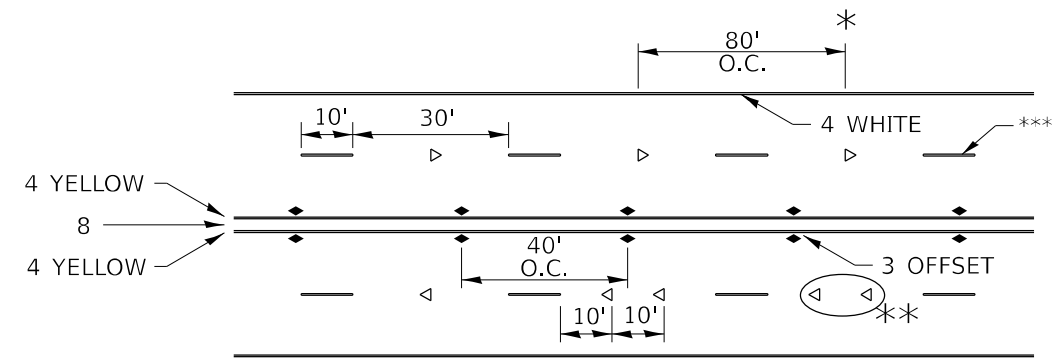


TYPICAL PAVEMENT MARKINGS (41.1)



* SEE HIGHWAY STANDARD 781001 FOR SPACING DETAILS.
USE DOUBLE MARKERS WHEN ADT ≥ 20,000.

MULTI-LANE / DIVIDED



* REDUCE TO 40' O.C. ON CURVES WHERE ADVISORY SPEEDS ARE 10 MPH LOWER THAN POSTED SPEEDS.

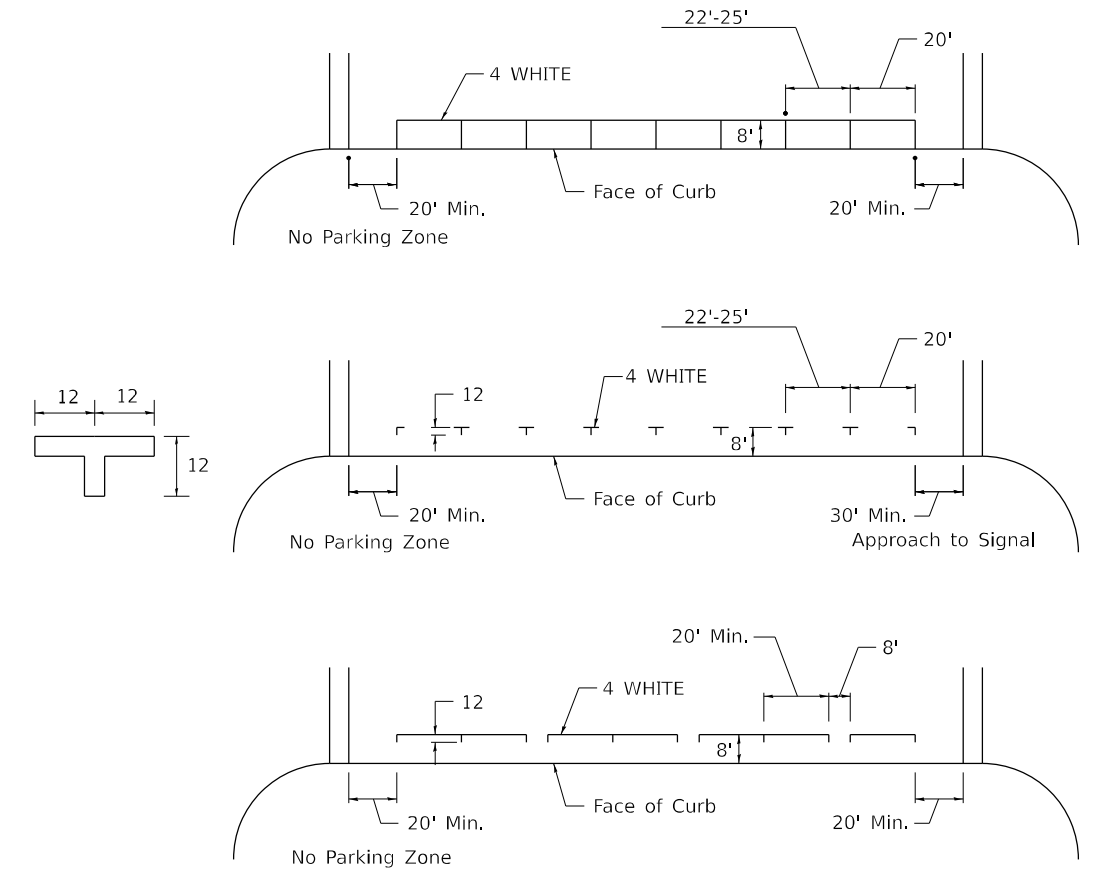
** USE DOUBLE MARKERS WHEN ADT ≥ 20,000

*** CENTERLINE SKIP DASH PAVEMENT MARKING SPEED LIMIT LESS THAN 40 MPH USE 4" LINE. SPEED LIMIT 40 MPH AND OVER USE 6" LINE.

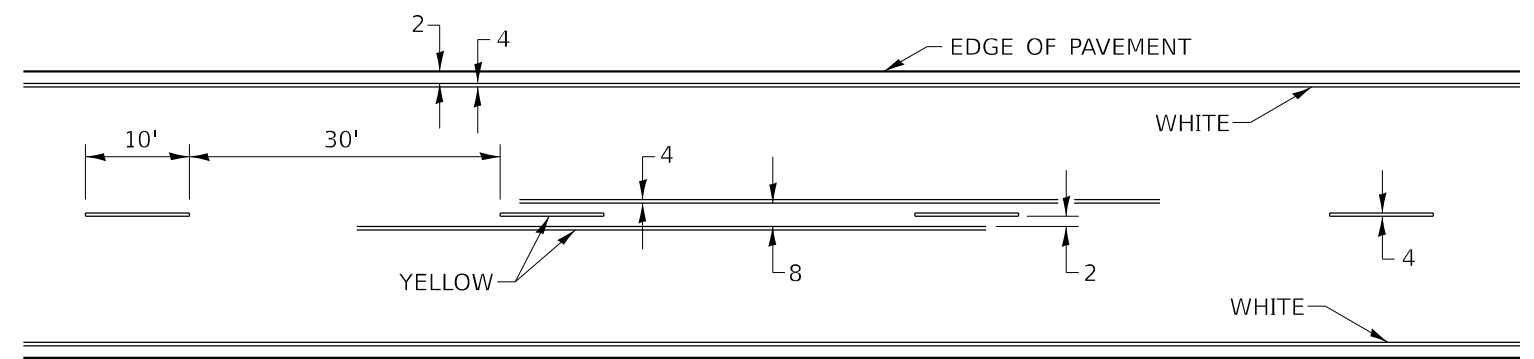
MULTI-LANE / UNDIVIDED & ONE WAY

(FOR MULTI-LANE UNDIVIDED HIGHWAYS USE THIS DETAIL NOT HIGHWAY STANDARD 781001)

TYPICAL PARKING SPACING



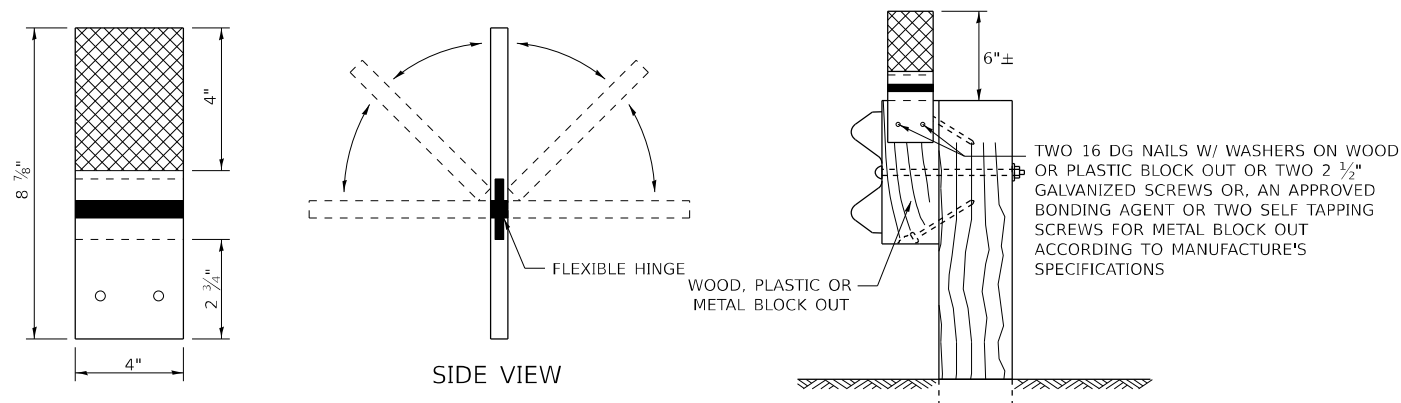
TYPICAL PAVEMENT MARKING FOR TWO LANE SECTION – NO PASSING ZONES



SYMBOLS

FILE NAME: S:\2023\231005 PTB 206-23 D2 - KPF - Various Phase II for Bridge Rehab\WO 06\CADD\CAD\DRAWN 264565-shi-Details_D2.dgn	USER NAME = rgoertz	DESIGNED -	REVISED - 6-27-14	STATE OF ILLINOIS DEPARTMENT OF TRANSPORTATION	REGION 2 / DISTRICT 2 STANDARD			F.A.S. RTE.	SECTION	COUNTY	TOTAL SHEETS	SHEET NO.
	PLOT SCALE = 99.99980000' / in.	CHECKED -	REVISED - 8-27-13					1197	(110BR-1)BR	WHITESIDE	23	22
PLOT DATE = 12/5/2023	DATE -	REVISED - 11-28-12	REVISED -	SCALE:	SHEET 3 OF 3 SHEETS	STA.	TO STA.	CONTRACT NO. 64565				
								ILLINOIS FED. AID PROJECT				

GUARDRAIL AND BARRIER WALL REFLECTORS, TYPE C (SPECIAL) (55.1)

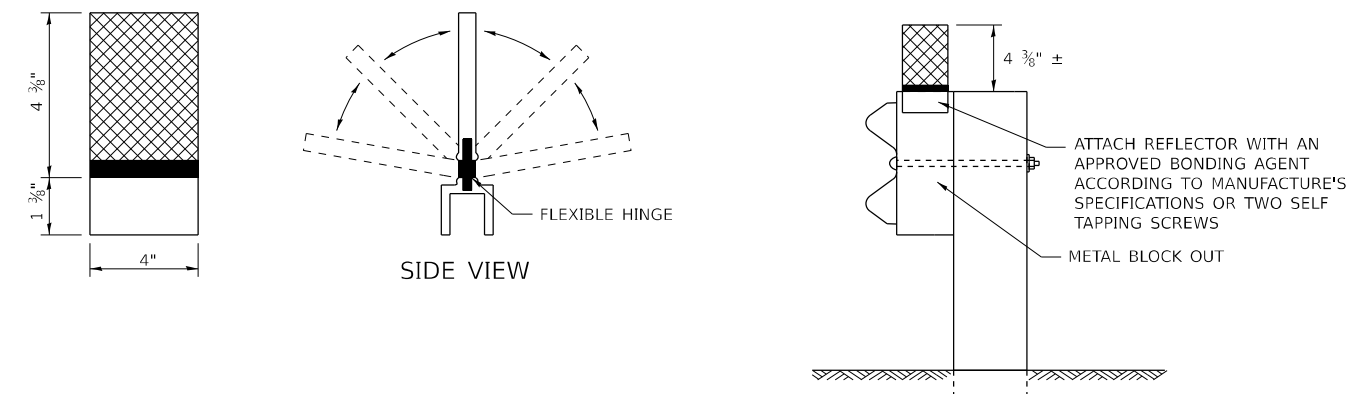


MOUNTED ON A WOOD OR PASTIC GUARDRAIL BLOCK OUT

REFLECTORS SHALL BE MOUNTED DIRECTLY TO WOOD OR PLASTIC BLOCK OUTS.

REFLECTORS MOUNTED ON WOODEN OR PLASTIC BLOCK OUT SHALL BE MOUNTED USING TWO 16 DG NAILS AND TWO 3/16" WASHERS OR TWO 2 1/2" GALVANIZED SCREWS WITH WASHERS.

REFLECTORS MOUNTED ON WOOD OR PLASTIC GUARDRAIL BLOCK OUT



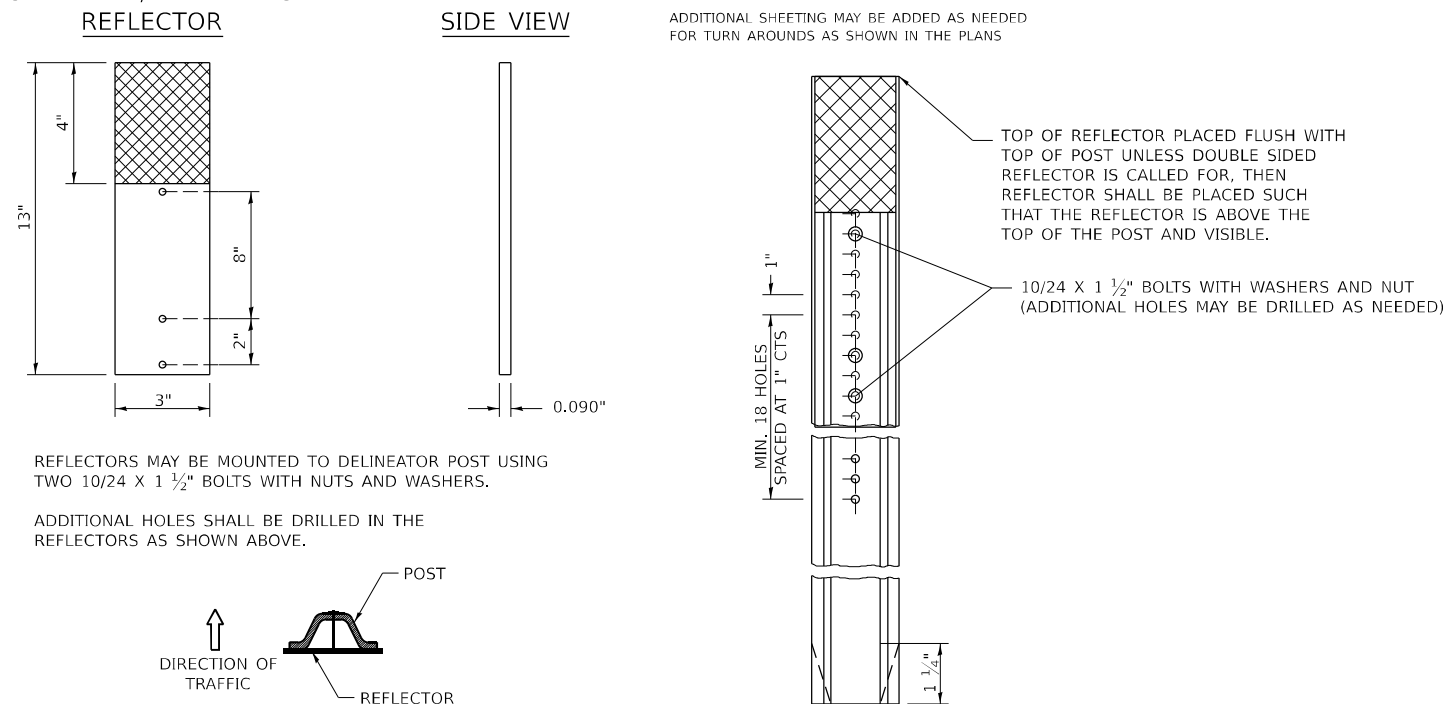
MOUNTED ON A METAL GUARDRAIL BLOCK OUT

REFLECTORS SHALL BE MOUNTED DIRECTLY TO METAL BLOCK OUT.

REFLECTORS MOUNTED ON METAL BLOCK OUT SHALL BE MOUNTED USING AN APPROVED BONDING AGENT PER THE MANUFACTURE'S SPECIFICATIONS OR TWO SELF TAPPING GALVANIZED SCREWS WITH WASHERS.

REFLECTORS MOUNTED ON METAL GUARDRAIL BLOCK OUT

STRAIGHT GUARDRAIL / DELINEATOR REFLECTOR



MOUNTED ON A DELINEATOR POST

ADDITIONAL SHEETING MAY BE ADDED AS NEEDED FOR TURN AROUNDS AS SHOWN IN THE PLANS

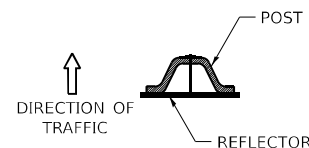
TOP OF REFLECTOR PLACED FLUSH WITH TOP OF POST UNLESS DOUBLE SIDED REFLECTOR IS CALLED FOR, THEN REFLECTOR SHALL BE PLACED SUCH THAT THE REFLECTOR IS ABOVE THE TOP OF THE POST AND VISIBLE.

10/24 X 1 1/2" BOLTS WITH WASHERS AND NUT (ADDITIONAL HOLES MAY BE DRILLED AS NEEDED)

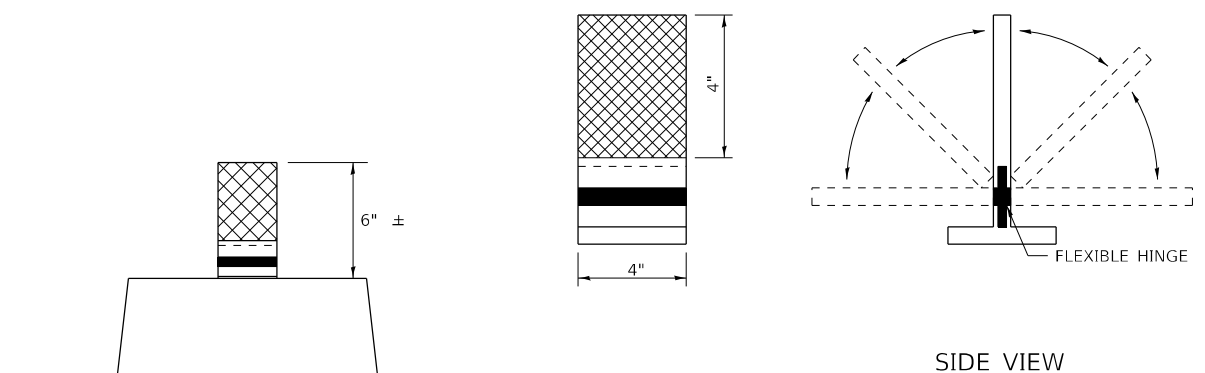
MIN. 18 HOLES SPACED AT 1" CTS

REFLECTORS MAY BE MOUNTED TO DELINEATOR POST USING TWO 10/24 X 1 1/2" BOLTS WITH NUTS AND WASHERS.

ADDITIONAL HOLES SHALL BE DRILLED IN THE REFLECTORS AS SHOWN ABOVE.



DELINEATORS SHALL BE INSTALLED ACCORDING TO STANDARD 635001 EXCEPT THAT THE POST SHALL BE ROTATED 180°. THE POST WILL HAVE THE WIDE SIDE FACING TRAFFIC AND THE REFLECTOR ATTACHECD AS SHOWN ABOVE.



REFLECTORS MOUNTED ON BARRIER WALL

NOTE:

REFLECTORS SHALL BE PAID FOR AT THE CONTRACT UNIT PRICE PER EACH FOR GUARDRAIL REFLECTORS, TYPE C (SPECIAL), WHICH PRICE SHALL ALSO INCLUDE SCREWS/NAILS, WASHERS OR AN APPROVED BONDING AGENT.

REFLECTORS INSTALLED ON TWO LANE ROADS SHALL BE DOUBLE SIDED AND BOTH SIDES SHALL BE CRYSTAL.

REFLECTORS INSTALLED ON CENTER BARRIER SHALL BE DOUBLE SIDE AND BOTH SIDES SHALL BE AMBER.

REFLECTORS INSTALLED ON DIVIDED HIGHWAYS SHALL BE SINGLE SIDED CRYSTAL.

SPACING FOR REFLECTORS SHALL BE ACCORDING TO STANDARD 782006 UNLESS OTHERWISE NOTED IN THE PLANS.

USER NAME = rgoertz	DESIGNED -	REVISED - 4-27-23
FILE NAME: S:\2023\231005 PTB 206-23 D2 - KPF - Various Phase II for Bridge Rehab\WO 06\CADD\CADD\Drawings\264565-sht-Details_D2.dgn	DRAWN -	REVISED - 6-21-21
PLOT SCALE = 0.16666633 1 / in.	CHECKED -	REVISED -
PLOT DATE = 12/5/2023	DATE -	REVISED -

**STATE OF ILLINOIS
DEPARTMENT OF TRANSPORTATION**

REGION 2 / DISTRICT 2 STANDARD

SCALE: SHEET 1 OF 1 SHEETS STA. TO STA.

F.A.S. RTE.	SECTION	COUNTY	TOTAL SHEETS	SHEET NO.
1197	(110-BR-1)BR	WHITESIDE	23	23
			CONTRACT NO. 64565	
ILLINOIS FED. AID PROJECT				