

STATE OF ILLINOIS
DEPARTMENT OF TRANSPORTATION
DIVISION OF HIGHWAYS

PROPOSED
HIGHWAY PLANS

VARIOUS ROUTES
SECTION D6 REFLECTOR REPL 24-22
VARIOUS COUNTIES

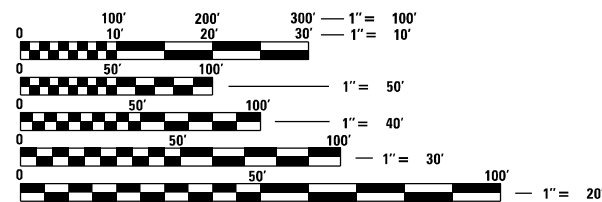
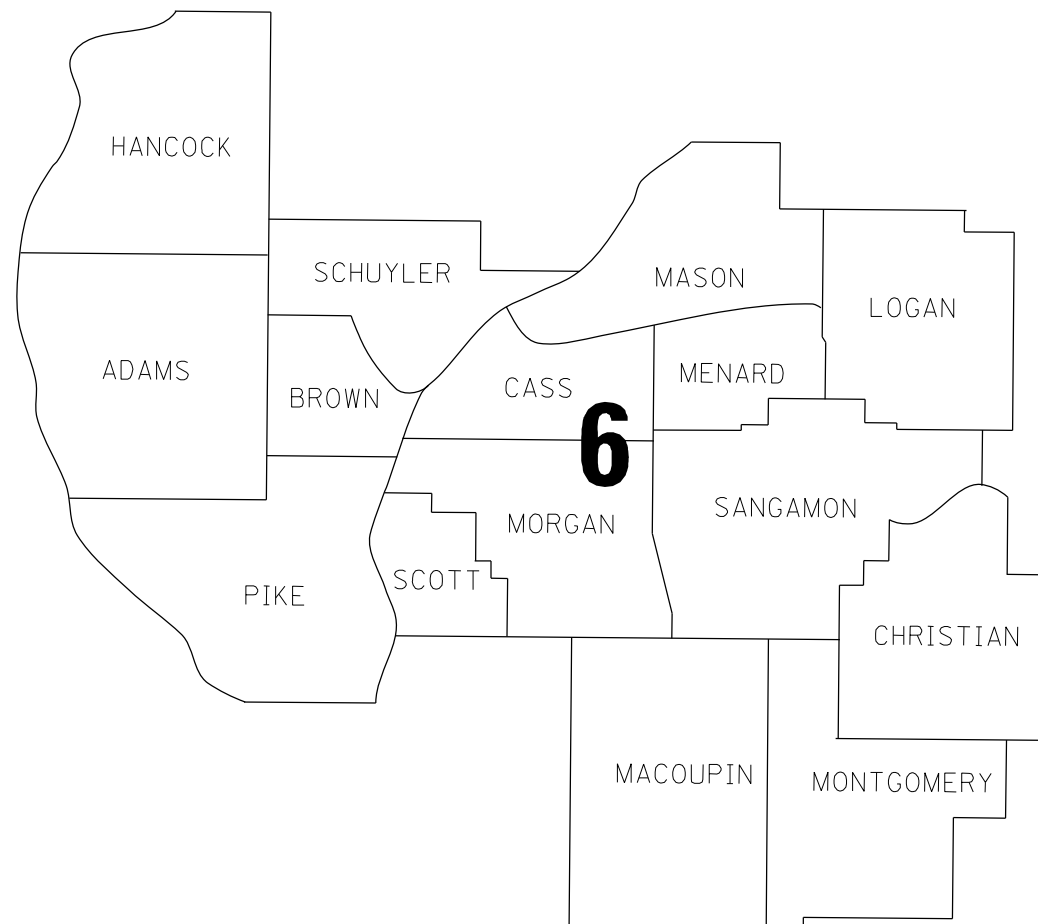
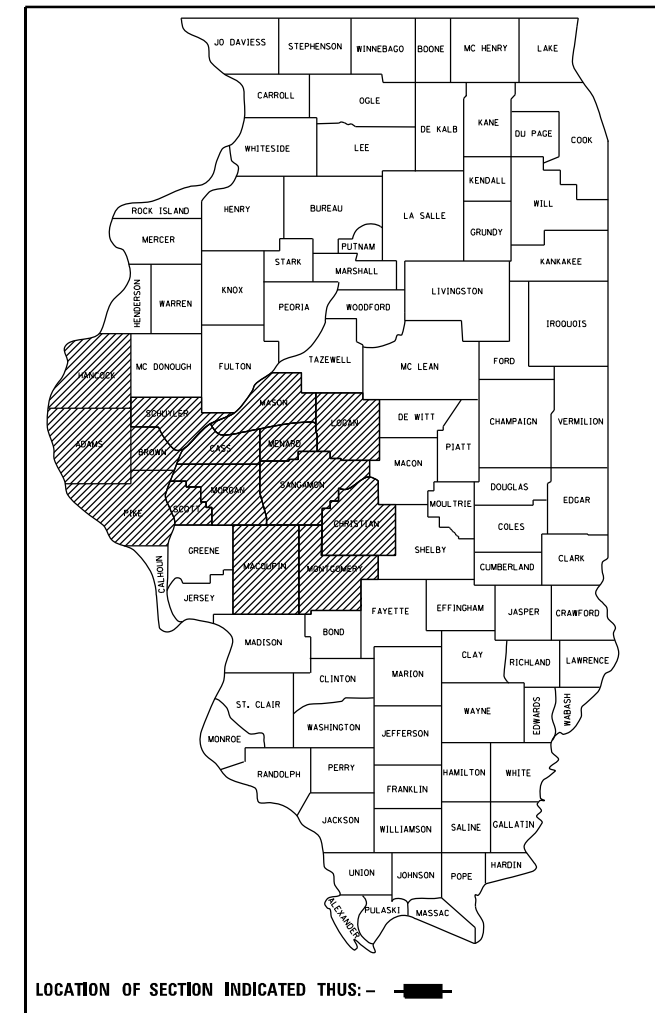
M-60-022-24

FOR INDEX OF SHEETS, SEE SHEET NO. 2

RTE.	SECTION	COUNTY	TOTAL SHEETS	SHEET NO.
VAR.	D6 REFLECTOR REPL	VARIOUS	3	1
		ILLINOIS	CONTRACT NO. 46641	

*D-6 REFLECTOR REPL 24-22

D-XX-XXX-XX



FULL SIZE PLANS HAVE BEEN PREPARED USING STANDARD ENGINEERING SCALES, REDUCED SIZED PLANS WILL NOT CONFORM TO STANDARD SCALES. IN MAKING MEASUREMENTS ON REDUCED PLANS, THE ABOVE SCALES MAY BE USED.

J.U.L.I.E.
JOINT UTILITY LOCATION INFORMATION FOR EXCAVATION
1-800-892-0123
OR 811

PROJECT ENGINEER: JASON JONES (217) 785-5306
PROJECT MANAGER: KURT CUFFLE (217) 524-8923

CONTRACT NO. 46641

STATE OF ILLINOIS
DEPARTMENT OF TRANSPORTATION
DIVISION OF HIGHWAYS

SUBMITTED January 30, 2024

John P. Meyer
REGION FOUR ENGINEER

March 22, 2024
Scott A. Etkin
ENGINEER OF DESIGN AND ENVIRONMENT

March 22, 2024
Stephen M. Smith
DIRECTOR OF HIGHWAYS PROJECT IMPLEMENTATION

PRINTED BY THE AUTHORITY
OF THE STATE OF ILLINOIS

INDEX OF SHEETS

- 1 COVER SHEET
- 2 INDEX OF SHEETS & STANDARDS
- 3 SUMMARY OF QUANTITIES

STANDARDS

- 701001-02 OFF-RD OPERATIONS, 2L, 2W, MORE THAN 15' AWAY
- 701006-05 OFF-RD OPERATIONS, 2L, 2W, 15' TO 24" FROM PAVEMENT EDGE
- 701101-05 OFF-RD OPERATIONS, MULTILANE, 15' TO 24" FROM PAVEMENT EDGE
- 701106-02 OFF-RD OPERATIONS, MULTILANE, MORE THAN 15' AWAY
- 701201-05 LANE CLOSURE, 2L, 2W, DAY ONLY, FOR SPEEDS > 45 MPH
- 701301-04 LANE CLOSURE, 2L, 2W, SHORT TIME OPERATIONS
- 701400-12 APPROACH TO LANE CLOSURE, FREEWAY/EXPRESSWAY
- 701401-13 LANE CLOSURE, FREEWAY/EXPRESSWAY
- 701411-09 LANE CLOSURE, MULTILANE, AT ENTRANCE OR EXIT RAMP, FOR SPEEDS > 45 MPH
- 701421-08 LANE CLOSURE, MULTILANE, DAY OPERATIONS ONLY, FOR SPEEDS > 45 MPH TO 55 MPH
- 701422-10 LANE CLOSURE, MULTILANE, FOR SPEEDS > 45 MPH TO 55 MPH
- 701426-09 LANE CLOSURE, MULTILANE, INTERMITTANT OR MOVING OPERATION, FOR SPEEDS > 45 MPH
- 701427-05 LANE CLOSURE, MULTILANE, INTERMITTANT OR MOVING OPERATION, FOR SPEEDS < 40 MPH
- 701428-01 TRAFFIC CONTROL SETUP AND REMOVAL FREEWAY/EXPRESSWAY
- 701456-05 PARTIAL EXIT RAMP CLOSURE FREEWAY/EXPRESSWAY
- 701501-06 URBAN LANE CLOSURE, 2L, 2W, UNDIVIDED
- 701502-09 URBAN LANE CLOSURE 2L, 2W, WITH BIDIRECTIONAL LEFT TURN LANE
- 701601-09 URBAN LANE CLOSURE, MULTILANE, 1W OR 2W WITH NONTRAVERSABLE MEDIAN
- 701602-10 URBAN LANE CLOSURE, MULTILANE, 2W WITH BIDIRECTIONAL LEFT TURN LANE
- 701606-10 URBAN SINGLE LANE CLOSURE, MULTILANE, 2W WITH MOUNTABLE MEDIAN
- 701701-10 URBAN LANE CLOSURE, MULTILANE INTERSECTION
- 701901-09 TRAFFIC CONTROL DEVICES
- 781001-04 TYPICAL APPLICATIONS RAISED REFLECTIVE PAYEMENT MARKERS
- 000001-08 STANDARD SYMBOLS, ABBREVIATIONS AND PATTERNS
- 001006 DECIMAL OF AN INCH AND OF A FOOT

REV. - MS

*D-6 REFLECTOR REPL 24-22

FILE NAME =	USER NAME = Jason.R.Jones	DESIGNED -	REVISED -	STATE OF ILLINOIS DEPARTMENT OF TRANSPORTATION	GENERAL NOTES	RTE.	SECTION	COUNTY	TOTAL SHEETS	SHEET NO.	
S:\CONTRMAINT_CAD\46641 - D6 REFLECTOR	REPL 24-22\46641 plans & cadd\sheet 2-46641	DRAWN -	REVISED -			VAR.	*	VARIOUS	3	2	
Default	PLOT SCALE = 2.0000' / in.	CHECKED -	REVISED -			CONTRACT NO. 46641					
	PLOT DATE = 1/29/2024	DATE -	REVISED -			SCALE:	SHEET	OF	SHEETS	STA.	TO
						ILLINOIS FED. AID PROJECT					

0021

Code Number	Item	Unit of Measure	100% State Total Quantity
78100100	Raised Reflective Pavement Marker	Each	41416
78100300	Replacement Reflector	Each	22341
78300200	Raised Reflective Pavement Marker Removal	Each	41214
* X7810302	Install Raised Reflective Pavement Marker	Each	330
∅ Z0076604	Trainees Training Program Graduate	Hour	1000
70200100	Nighttime Work Zone Lighting	Lump Sum	1

* SEE SPECIAL PROVISION

∅ 0042

REV. - MS

•D-6 REFLECTOR REPL 24-22

FILE NAME = S:\CONTRMAINT_CAD\46641 - D6 REFLECTOR	USER NAME = Jason.R.Jones	DESIGNED -	REVISED -	STATE OF ILLINOIS DEPARTMENT OF TRANSPORTATION	SUMMARY OF QUANTITIES				RTE.	SECTION	COUNTY	TOTAL SHEETS	SHEET NO.
REPL 24-22\46641 plans & cadd\sheet 3-46641	DRAWN -	REVISED -	VAR.						*	VARIOUS	3	3	
PLOT SCALE = 2.0000' / in.	CHECKED -	REVISED -	SCALE: SHEET OF SHEETS STA. TO STA.					CONTRACT NO. 46641					
Default	DATE -	REVISED -	ILLINOIS FED. AID PROJECT										