

04-26-2024 LETTING ITEM 176

STATE OF ILLINOIS  
DEPARTMENT OF TRANSPORTATION  
DIVISION OF HIGHWAYS

PLANS FOR PROPOSED  
SURFACE TRANSPORTATION PROGRAM, STATE MATCH  
AND REBUILD ILLINOIS LOCAL AGENCY IMPROVEMENT  
FEDERAL-AID SECONDARY PROJECT

SECTION 21-00129-00-FP RICHLAND COUNTY

PROJECT XDPC(892)

JOB NO. C-97-094-23

FAS 2803

Joint Utility Locating Information for Excavators

JULIE 1-800-892-0123

PLAN 0 50' 100'  
PROFILE HOR. 0 50' 100'  
PROFILE VERT. 0 5' 10'

NOTE: SCALES VALID FOR 22" X 34" SHEETS

INDEX OF SHEETS

SHEET	ITEM
1	COVER SHEET
2	SUMMARY OF QUANTITIES, AND GENERAL NOTES
3	ROADWAY TYPICAL SECTIONS
4-5	SCHEDULE OF QUANTITIES
6-15	PLAN AND PROFILE
16-20	INTERSECTION DETAIL
21	ENTRANCE DETAILS
22	MISCELLANEOUS DETAILS
23	TRAFFIC CONTROL PLAN

STANDARD DRAWINGS

- STANDARD 000001-08
- STANDARD 406201-01
- STANDARD 482001-02
- STANDARD 701001-02
- STANDARD 701006-05
- STANDARD 701011-04
- STANDARD 701201-05
- STANDARD 701301-04
- STANDARD 701306-04
- STANDARD 701901-09
- STANDARD 720001-01
- STANDARD 720006-04
- STANDARD 728001-01
- STANDARD BLR 21-9
- STANDARD BLR 22-7



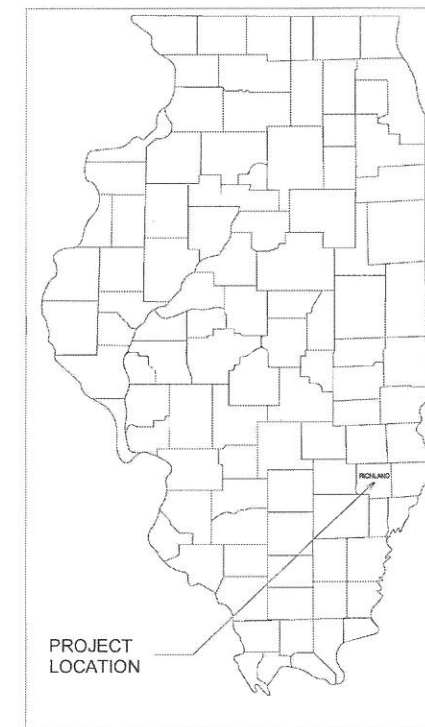
SECTION 21-00129-00-FP BEGINS STA. 0+00.00

SECTION 21-00129-00-FP ENDS STA. 129+35.00

SECTION 21-00129-00-FP  
TOTAL LENGTH = 12,935.00 FEET = 2.450 MILES

FUNCTIONAL CLASSIFICATION - MINOR COLLECTOR  
ADT = 400  
DESIGN SPEED = 50 MPH

ROUTE	SECTION	COUNTY	TOTAL SHEETS	SHEET NO.
FAS 2803	21-00129-00-FP	RICHLAND	23	1
CONTRACT 95949		ILLINOIS	XDPC(892)	



*Brandon M. Briggs*  
1/25/2024

LICENSE EXPIRES 11/30/2025

**CHARLESTON ENGINEERING, INC.**  
CONSULTING ENGINEERS - LAND SURVEYORS  
105 NORTH KITCHELL AVENUE  
P.O. BOX 397  
OLNEY, ILLINOIS 62450  
(618) 392-0736  
ILLINOIS DEPARTMENT OF PROFESSIONAL REGULATION REGISTRATION #184.003513

APPROVED January 25, 2024  
*Danny A. Colwell, P.E.*  
COUNTY ENGINEER

STATE OF ILLINOIS  
DEPARTMENT OF TRANSPORTATION

PASSED 02/27/24  
*Butterfield*  
DISTRICT SEVEN ENGINEER OF  
LOCAL ROADS AND STREETS

Releasing For  
Bid Based on  
Limited Review  
02/27/24  
*Jeffrey M. Meyer*  
REGION FOUR ENGINEER

**GENERAL NOTES**

THE CONTRACTOR SHALL CONTACT JULIE (1-800-892-0123) BEFORE COMMENCING WORK. UNDERGROUND UTILITIES SHOWN ON THE PLAN SHEETS WERE OBTAINED FROM LOCAL UTILITY COMPANIES AND OTHER AVAILABLE SOURCES. LOCATIONS, SIZE, MATERIAL, DESCRIPTION, OR TYPE OF EXISTING UTILITIES INDICATED ON THE PLANS ARE NOT REPRESENTED AS BEING ACCURATE, SUFFICIENT, OR COMPLETE AND SHALL BE CONSIDERED APPROXIMATE. ABOVE GROUND UTILITY LOCATIONS ARE SHOWN AS FOUND DURING THE INITIAL SURVEY FIELD WORK AND MAY NOT REFLECT CURRENT CONDITIONS. THE CONTRACTOR IS RESPONSIBLE FOR MAKING HIS OWN DETERMINATION AS TO THE TYPE AND LOCATION OF UNDERGROUND AND OTHER UTILITIES AS MAY BE NECESSARY TO AVOID DAMAGE THERETO. THE CONTRACTOR SHALL BE RESPONSIBLE FOR LOCATING ALL UNDERGROUND UTILITIES AND COORDINATION WITH UTILITY COMPANIES.

THE CONTRACTOR SHALL COORDINATE ALL CONSTRUCTION ACTIVITIES WITH UTILITY COMPANIES AND THE RICHLAND COUNTY HIGHWAY DEPARTMENT.

THE FOLLOWING RATES HAVE BEEN USED TO CALCULATE PLAN QUANTITIES:  
 AGGREGATE BASE COURSE, TY-B 2.0 TONS/CU YD  
 AGGREGATE SURFACE COURSE, TY-B 2.0 TONS/CU YD  
 BITUMINOUS MATERIALS (PRIME COAT) 0.25 POUNDS/SQ FT  
 BITUMINOUS MATERIALS (TACK COAT) 0.05 POUNDS/SQ FT  
 HOT-MIX ASPHALT 112.0 POUNDS/SQ YD/INCH THICKNESS  
 AGGREGATE WEDGE SHOULDER, TYPE-B 2.0 TONS/CU YD

**SCHEDULE OF KNOWN UTILITIES**

DESIGN STAGE JULIE NO. A2793991 & A2793999

UTILITY COMPANY	TYPE	CONTACT NAME	PHONE NUMBER	E-MAIL ADDRESS	MAILING ADDRESS
AMEREN ILLINOIS	ELECTRIC	NATE HILL	618-301-5327	nhill2@ameren.com	#6 EXECUTIVE DRIVE, COLLINSVILLE, IL 62234
NORRIS ELECTRIC CO-OP	ELECTRIC	TIM HUBER	618-783-8765	thuber@norriselectric.com	8543 N. IL. 130, NEWTON, IL 62448
AT&T TRANSMISSION	COMMUNICATIONS	VANESSA ROSS	217-381-4284	vf2021@att.com	2500 COLT ROAD, SPRINGFIELD, IL 62707
FRONTIER COMMUNICATIONS	COMMUNICATIONS	BRIAN VANGUNDY	618-395-6189	brian.vangundy@ftr.com	225 E. CHESTNUT ST, OLNEY, IL 62450
CLEARWAVE COMMUNICATIONS	COMMUNICATIONS	ROTH CLAYTON	618-841-2600	rclayton@corp.clearwave.com	2 N VINE ST, HARRISBURG, IL 62946
ILLINOIS GAS COMPANY	GAS	JORDAN KOCHER, P.E.	618-395-8588	jkocher@ilgas.com	1927 MILLER DRIVE, OLNEY, IL 62450
METRO COMMUNICATIONS	COMMUNICATIONS	TAYLOR RICH	217-728-3608	trich@metrocomm.com	8 SOUTH WASHINGTON ST, P.O. BOX 555, SULLIVAN, IL 61951
VILLAGE OF CALHOUN	WATER LINE	SPENCER BROCK	618-843-8693		
VILLAGE OF CALHOUN	SEWER LINE	SPENCER BROCK	618-843-8693		
VILLAGE OF PARKERSBURG	WATER LINE	RAYMOND RUDOLPHI	618-838-0384	pburgvillagemayor@gmail.com	

SUMMARY OF QUANTITIES			
CODE NO.	ITEM	UNIT	TOTAL QUANTITY
X0326440	SURFACE REMOVAL, VARIABLE DEPTH (SPECIAL)	SQ YD	25,475
X7010216	TRAFFIC CONTROL AND PROTECTION, (SPECIAL)	L SUM	1
Z0013798	CONSTRUCTION LAYOUT	L SUM	1
Z0055300	RUMBLE STRIP	EACH	2
35101400	AGGREGATE BASE COURSE, TYPE B	TON	36
35200410	PROCESSING SOIL-CEMENT BASE COURSE 10"	SQ YD	7,592
35200500	CEMENT	100 WT	9,207
40200800	AGGREGATE SURFACE COURSE, TYPE B	TON	106
40600275	BITUMINOUS MATERIALS (PRIME COAT)	POUND	1,233.3
40600290	BITUMINOUS MATERIALS (TACK COAT)	POUND	14,480
40600990	TEMPORARY RAMP	SQ YD	475.1
40604152	POLYMERIZED HOT-MIX ASPHALT SURFACE COURSE, IL-9.5, MIX "C", N70	TON	3,913
48102100	AGGREGATE WEDGE SHOULDER, TYPE B	TON	350
48203100	HOT-MIX ASPHALT SHOULDERS	TON	96
60255500	MANHOLES TO BE ADJUSTED	EACH	5
60266600	VALVE BOXES TO BE ADJUSTED	EACH	8
67100100	MOBILIZATION	L SUM	1
* 72000100	SIGN PANEL - TYPE 1	SQ FT	18
* 72800100	TELESCOPING STEEL SIGN SUPPORT	FOOT	32

\* SPECIALTY ITEM

SUMMARY OF BITUMINOUS MATERIALS (PRIME COAT)	
LOCATION	QUANTITY (POUNDS)
MAINLINE	-
SIDE ROADS	790.0
MAILBOX TURNOUTS	443.3
TOTAL BITUMINOUS MATERIAL (PRIME COAT) =	1,233.3

SUMMARY OF PROCESSING SOIL-CEMENT BASE COURSE 10"	
LOCATION	QUANTITY (SQ YD)
MAINLINE	6,580
SIDE ROADS	1,012
TOTAL PROCESSING SOIL-CEMENT BASE COURSE 10" =	7,592

SUMMARY OF BITUMINOUS MATERIALS (TACK COAT)	
LOCATION	QUANTITY (POUNDS)
MAINLINE	14,190
SIDE ROADS	290
TOTAL BITUMINOUS MATERIAL (TACK COAT) =	14,480

SUMMARY OF CEMENT	
LOCATION	QUANTITY (HWT)
MAINLINE	7,980
SIDE ROADS	1,227
TOTAL CEMENT =	9,207

SUMMARY OF TEMPORARY RAMPS	
LOCATION	QUANTITY (SQ YD)
MAINLINE BUTT JOINT, STA. 0+00	146.0
MAINLINE TRANSITION, STA. 103+50	25.0
MAINLINE BUTT JOINT, STA. 129+35	23.0
SIDE ROADS	281.1
TOTAL TEMPORARY RAMP =	475.1

SUMMARY OF HOT-MIX ASPHALT	
OPERATION	QUANTITY (TONS)
MAINLINE PAVING	3,713.0
SIDERoads AND PRIVATE ENTRANCES	177.0
MAILBOX TURNOUTS	23.1
TOTAL HMA SURFACE COURSE =	3,913.1

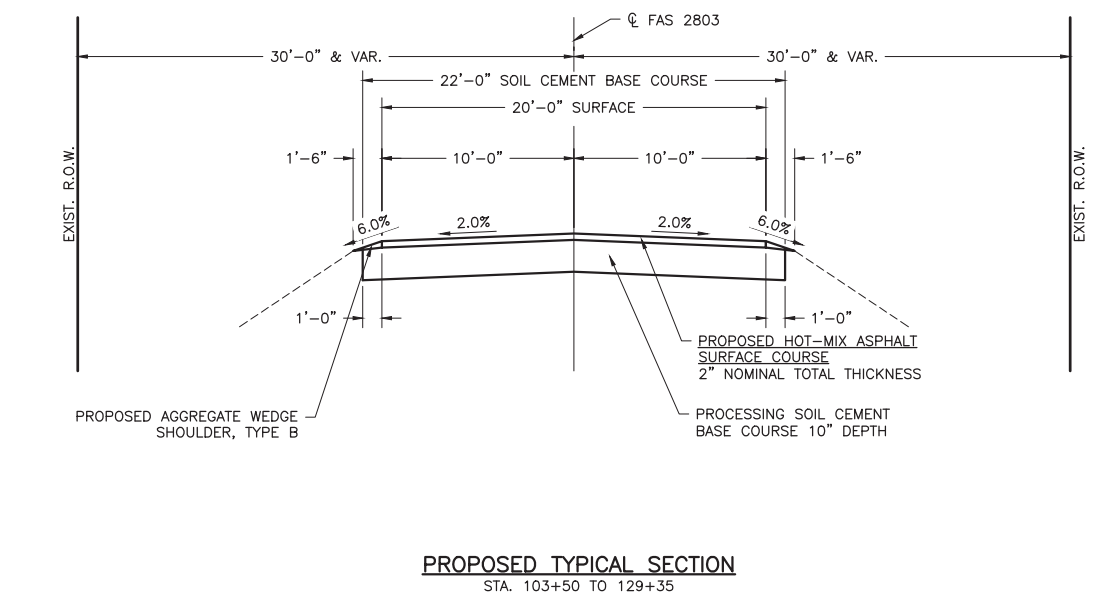
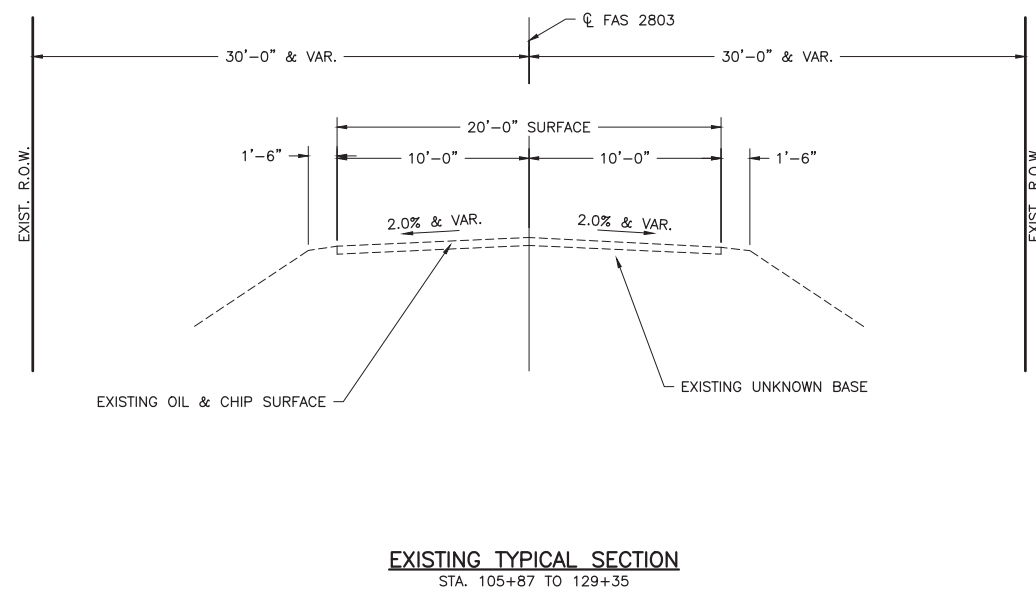
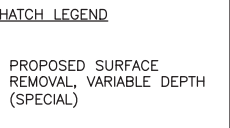
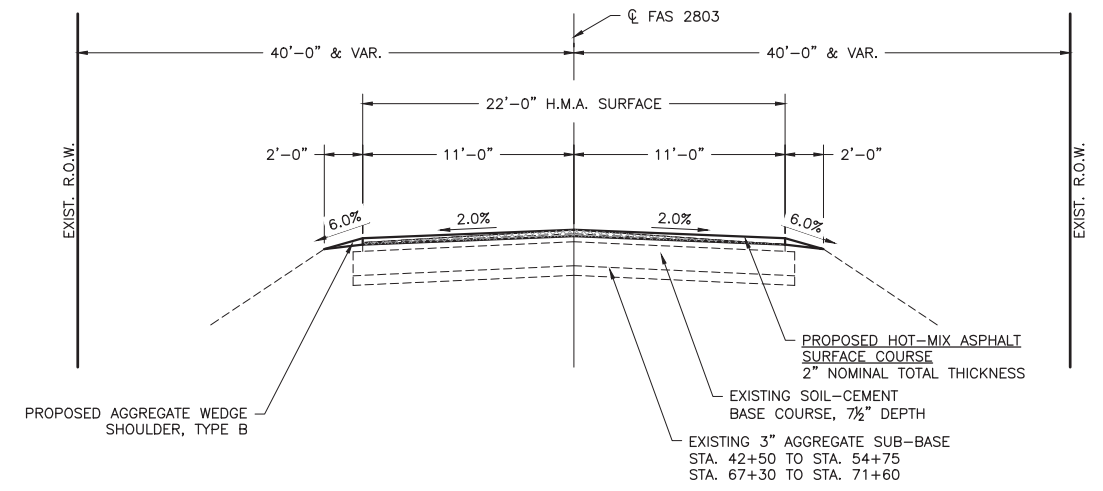
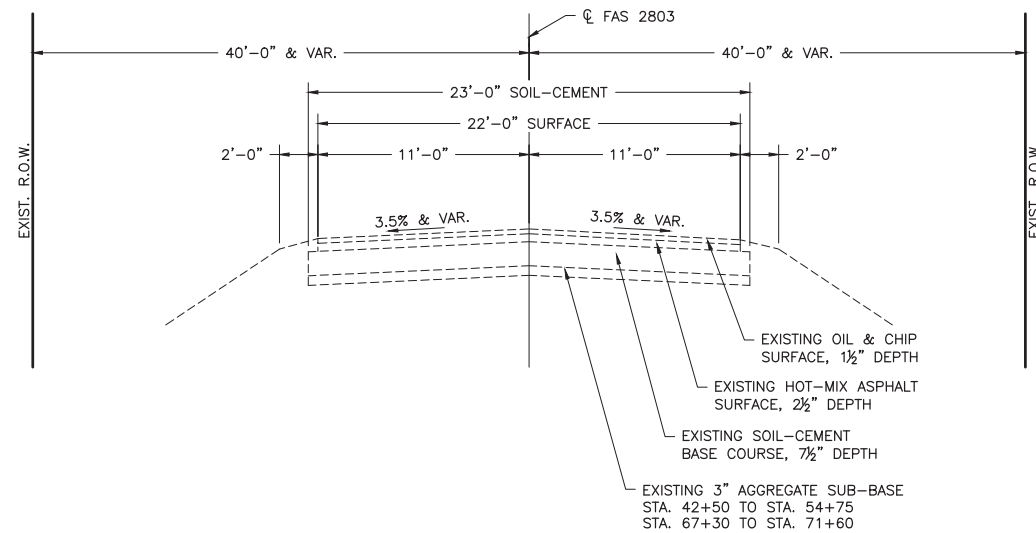
HOT-MIX ASPHALT MIXTURE REQUIREMENTS							
LOCATIONS	APPLICATION	PERFORMANCE GRADE	DESIGN AIR VOIDS	MIXTURE COMPOSITION	FRICTION AGGREGATE	MIXTURE UNIT WEIGHT	QUALITY MANAGEMENT PROGRAM
MAINLINE & SIDERoads	POLYMERIZED HOT-MIX ASPHALT SURFACE COURSE, IL-9.5, MIX "C", N70	PG 70-22	4% @ N=70 Gyration	IL-9.5	MIXTURE "C"	112 LB/SQ YD/IN	QC/QA

<b>CHARLESTON ENGINEERING, INC.</b> CONSULTING ENGINEERS - LAND SURVEYORS 105 NORTH KITCHELL AVENUE OLNEY, ILLINOIS 62450 P.O. BOX 397 (618) 392-0736 ILLINOIS DEPARTMENT OF PROFESSIONAL REGULATION REGISTRATION #184 003513	DESIGNED - BMB	REVISED -
	DRAWN - BMB	REVISED -
	CHECKED - BMB	REVISED -
	DATE - 1-23-2024	REVISED -

STATE OF ILLINOIS  
DEPARTMENT OF TRANSPORTATION

SUMMARY OF QUANTITIES AND  
GENERAL NOTES

ROUTE	SECTION	COUNTY	TOTAL SHEETS	SHEET NO.
FAS 2803	21-00129-00-FP	RICHLAND	23	2
CONTRACT 95949		ILLINOIS	XDPC(892)	



**CHARLESTON ENGINEERING, INC.**  
CONSULTING ENGINEERS - LAND SURVEYORS  
105 NORTH KITCHELL AVENUE OLNEY, ILLINOIS 62450  
P.O. BOX 397 (618) 392-0736  
ILLINOIS DEPARTMENT OF PROFESSIONAL REGULATION REGISTRATION #184.003513

DESIGNED - BMB	REVISED -
DRAWN - BMB	REVISED -
CHECKED - BMB	REVISED -
DATE - 1-23-2024	REVISED -

STATE OF ILLINOIS  
DEPARTMENT OF TRANSPORTATION

ROADWAY TYPICAL SECTIONS

ROUTE	SECTION	COUNTY	TOTAL SHEETS	SHEET NO.
FAS 2803	21-00129-00-FP	RICHLAND	23	3
CONTRACT 95949		ILLINOIS	XDPC(892)	

ROADWAY BASE COURSE AND PAVING SCHEDULE (MAINLINE)																						
PAVEMENT STRUCTURE		SURFACE REM., VAR. DEPTH (SPL)			BASE COURSE																	
CODE NUMBER		X0326440			35200410			35200500			40600990		40600290		40604152		20055300	35101400	48203100	48102100		
STATION TO STATION		LENGTH	WIDTH	SURFACE REMOVAL, VARIABLE DEPTH (SPECIAL)	LENGTH	SOIL-CEMENT BASE COURSE WIDTH	PROCESSING SOIL-CEMENT BASE COURSE 10"	MAX. LAB DRY SOIL UNIT WEIGHT	CEMENT	HMA PAVEMENT LENGTH	HMA PAVEMENT WIDTH	HMA PAVEMENT AREA	HMA SURFACE REMOVAL, BUTT JOINT - FOR INFORMATION ONLY	TEMPORARY RAMP (MAINLINE)	BITUMINOUS MATERIALS (TACK COAT) RESIDUAL ASPHALT RATE	BITUMINOUS MATERIALS (TACK COAT)	TOTAL HMA SURFACE COURSE DEPTH	POLYMERIZED HOT-MIX ASPHALT SURFACE COURSE, IL-9.5, MIX "C", N70	RUMBLE STRIP	AGGREGATE BASE COURSE, TYPE B	HOT-MIX ASPHALT SHOULDERS	AGGREGATE WEDGE SHOULDER, TYPE B
		(FT)	(FT)	(SQ YD)	(FEET)	(FEET)	(SQ YD)	(PCF)	(% MASS)	(HWT)	(FEET)	(FEET)	(SQ YD)	(SQ YD)	(SQ YD)	(LB/SQ FT)	(POUND)	(IN)	(TON)	(EACH)	(TON)	(TON)
+	to	+68.	68	VAR.	330	-	-	-	-	-	68	22 & VAR.	350	-	146	0	160	2	41	-	-	14
+68.	to	3+50.	282	22	690	-	-	-	-	-	282	22	690	-	-	0	315	2	83	1	-	21
3+50.	to	50+37.	4,687	22	11,460	-	-	-	-	-	4,687	22	11,458	-	-	0	5,160	2	1,385	1	-	122
50+37.	to	53+50.	313	22	770	-	-	-	-	-	313	22	766	-	-	0	345	2	100	-	36	96
53+50.	to	103+50.	5,000	22	12,225	-	-	-	-	-	5,000	22	12,223	-	25	0	5,505	2	1,429	-	-	126
103+50.	to	129+35.	-	-	-	2,585	22	6,580	135.2	12.0%	7,980	2,585	20	6,001	112	23	0	2,705	2	675	-	65
<b>TOTALS =</b>				<b>25,475</b>				<b>6,580</b>			<b>7,980</b>			<b>112</b>	<b>194</b>	<b>14,190</b>		<b>3713</b>	<b>2</b>	<b>36</b>	<b>96</b>	<b>350</b>

MAILBOX TURNOUT SCHEDULE			
CODE NUMBER		40604152	40600275
		POLYMERIZED HOT-MIX ASPHALT SURFACE COURSE, IL-9.5, MIX "C", N70	BITUMINOUS MATERIALS (PRIME COAT)
STATION	LOCATION	(TON)	(POUND)
1+71	LT	1.2	23.0
2+90	LT	1.2	23.0
5+14	LT	1.2	23.0
6+01	LT	1.2	23.0
8+18	LT	1.2	23.0
29+70	LT	1.2	23.0
50+99	LT	1.2	23.0
64+17	LT	1.2	23.0
83+79	LT	1.2	23.0
85+33	LT	1.2	23.0
91+49	LT	1.2	23.0
109+20	LT	0.9	17.3
109+96	LT	0.9	17.3
111+58	LT	0.9	17.3
113+33	LT	0.9	17.3
114+14	LT	0.9	17.3
114+33	LT	0.9	17.3
116+38	LT	0.9	17.3
117+54	LT	0.9	17.3
121+50	LT	0.9	17.3
122+93	LT	0.9	17.3
126+04	RT	0.9	17.3
<b>TOTAL</b>		<b>23.1</b>	<b>443.3</b>

MANHOLES TO BE ADJUSTED		
CODE NUMBER		60255500
		MANHOLES TO BE ADJUSTED
STATION	LOCATION	(EACH)
108+55	LT	1.0
111+72	LT	1.0
114+99	LT	1.0
117+51	LT	1.0
120+65	LT	1.0
<b>TOTAL =</b>		<b>5.0</b>

VALVE BOXES TO BE ADJUSTED		
CODE NUMBER		60266600
		VALVE BOXES TO BE ADJUSTED
STATION	LOCATION	(EACH)
115+22	RT	1.0
115+27	LT	1.0
115+28	RT	1.0
119+63	RT	1.0
123+60	RT	1.0
123+62	RT	1.0
125+80	LT	1.0
126+08	LT	1.0
<b>TOTAL =</b>		<b>8.0</b>

CHARLESTON ENGINEERING, INC.  
CONSULTING ENGINEERS - LAND SURVEYORS  
105 NORTH KITCHELL AVENUE OLNEY, ILLINOIS 62450  
P.O. BOX 387 (618) 392-0736  
ILLINOIS DEPARTMENT OF PROFESSIONAL REGULATION REGISTRATION #184.003513

DESIGNED -- BMB  
DRAWN -- BMB  
CHECKED -- BMB  
DATE -- 1-23-2024

REVISED --  
REVISED --  
REVISED --  
REVISED --

STATE OF ILLINOIS  
DEPARTMENT OF TRANSPORTATION

SCHEDULES OF QUANTITIES

ROUTE	SECTION	COUNTY	TOTAL SHEETS	SHEET NO.
FAS 2803	21-00129-00-FP	RICHLAND	23	4
CONTRACT 95949		ILLINOIS	XDPC(892)	

ENTRANCES AND SIDE ROADS SCHEDULE																		
PAVEMENT STRUCTURE					SURFACE REMOVAL		BASE COURSE				PAVEMENT							
CODE NUMBER					-	40600990	35200410	35200500			40600290	40600275	40604152	40200800				
STATION	LOCATION	TYPE	EXISTING SURFACE MATERIAL	PROPOSED SURFACE MATERIAL	HMA SURFACE REMOVAL, BUTT JOINT - FOR INFORMATION ONLY	TEMPORARY RAMP (AFTER HMA SURFACE REMOVAL, VAR. DEPTH)	PROCESSING SOIL-CEMENT BASE COURSE 10"	MAX. LAB DRY SOIL UNIT WEIGHT	CEMENT		BITUMINOUS MATERIALS (TACK COAT)	BITUMINOUS MATERIALS (PRIME COAT)	POLYMERIZED HOT-MIX ASPHALT SURFACE COURSE, IL-9.5, MIX "C", N70	AGGREGATE SURFACE COURSE, TYPE-B	W1	W2	LENGTH	RADIUS
					(SQYD)	(SQYD)	(SQYD)	(PCF)	(% MASS)	(HWT)	(POUND)	(POUND)	(TONS)	(TONS)	(FEET)	(FEET)	(FEET)	(FEET)
0+79	LT	PE	AGG.	AGG.	-	-	-	-	-	-	-	-	-	1.5	38	22	8	8' FLARE
1+46	LT	PE	AGG.	AGG.	-	-	-	-	-	-	-	-	-	0.9	22	14	8	4' FLARE
3+22	LT	FE	AGG.	AGG.	-	-	-	-	-	-	-	-	-	2.3	50	42	8	4' FLARE
5+36	LT	PE	AGG.	AGG.	-	-	-	-	-	-	-	-	-	2.0	43	35	8	4' FLARE
5+68	LT	PE	AGG.	AGG.	-	-	-	-	-	-	-	-	-	2.0	43	35	8	4' FLARE
7+20	RT	FE	AGG.	AGG.	-	-	-	-	-	-	-	-	-	1.6	36	28	8	4' FLARE
7+94	LT	PE	PCC	HMA	25.0	23.2	-	-	-	10	-	3.0	1.3	30	22	8	4' FLARE	
19+72	LT	FE	AGG.	AGG.	-	-	-	-	-	-	-	-	-	1.4	32	24	8	4' FLARE
21+64	RT	FE	AGG.	AGG.	-	-	-	-	-	-	-	-	-	1.5	34	26	8	4' FLARE
29+86	LT	PE	AGG.	AGG.	-	-	-	-	-	-	-	-	-	0.9	22	14	8	4' FLARE
33+10	RT	FE	AGG.	AGG.	-	-	-	-	-	-	-	-	-	1.4	32	24	8	4' FLARE
39+21	LT	FE	AGG.	AGG.	-	-	-	-	-	-	-	-	-	1.3	30	22	8	4' FLARE
41+47	LT	FE	AGG.	AGG.	-	-	-	-	-	-	-	-	-	1.6	36	28	8	4' FLARE
49+80	LT	PE	AGG.	AGG.	-	-	-	-	-	-	-	-	-	1.1	26	18	8	4' FLARE
51+25	LT	PE	HMA	HMA	25.0	21.4	-	-	-	5	-	3.0	-	28	20	8	4' FLARE	
52+70	RT	SIDE ROAD	AGG.	HMA	220.0	-	-	-	-	-	490	25.0	-	105	20	55	55/30	
52+75	LT	SIDE ROAD	AGG.	HMA	135.0	-	-	-	-	-	300	15.0	-	87	22	34	35/30	
64+60	LT	PE	HMA	HMA	25.0	21.4	-	-	-	5	-	3.0	1.2	28	20	8	4' FLARE	
79+10	LT	PE	AGG.	AGG.	-	-	-	-	-	-	-	-	-	1.4	32	24	8	4' FLARE
81+71	RT	PE	HMA	HMA	30.0	28.5	-	-	-	10	-	4.0	1.6	40	24	8	8' FLARE	
83+79	RT	PE	AGG.	AGG.	-	-	-	-	-	-	-	-	-	1.3	30	22	8	4' FLARE
84+65	LT	FE	AGG.	AGG.	-	-	-	-	-	-	-	-	-	1.9	42	34	8	4' FLARE
85+61	RT	PE	AGG.	AGG.	-	-	-	-	-	-	-	-	-	1.6	36	28	8	4' FLARE
91+78	RT	PE	AGG.	AGG.	-	-	-	-	-	-	-	-	-	1.0	24	16	8	4' FLARE
91+90	LT	FE	AGG.	AGG.	-	-	-	-	-	-	-	-	-	1.0	24	16	8	4' FLARE
101+25	LT	FE	AGG.	AGG.	-	-	-	-	-	-	-	-	-	1.4	32	24	8	4' FLARE
103+25	LT	PE	AGG.	AGG.	-	-	-	-	-	-	-	-	-	1.8	40	32	8	4' FLARE
103+75	LT	PE	AGG.	AGG.	-	-	-	-	-	-	-	-	-	1.2	28	20	8	4' FLARE
105+24	LT	SIDE ROAD	AGG.	AGG.	-	-	-	-	-	-	-	-	-	2.4	30	18	8	10
108+41	RT	SIDE ROAD	AGG.	AGG.	-	-	-	-	-	-	-	-	-	7.1	44	18	26	75/10
108+90	RT	PE	AGG.	AGG.	-	-	-	-	-	-	-	-	-	0.8	20	12	8	4' FLARE
108+92	LT	PE	AGG.	AGG.	-	-	-	-	-	-	-	-	-	0.8	20	12	8	4' FLARE
110+38	LT	PE	AGG.	AGG.	-	-	-	-	-	-	-	-	-	1.0	23	15	8	4' FLARE
110+82	RT	PE	AGG.	AGG.	-	-	-	-	-	-	-	-	-	1.5	34	26	8	4' FLARE
111+42	LT	PE	AGG.	AGG.	-	-	-	-	-	-	-	-	-	0.9	22	14	8	4' FLARE
111+55	RT	PE	AGG.	AGG.	-	-	-	-	-	-	-	-	-	0.9	22	14	8	4' FLARE
112+17	RT	PE	AGG.	AGG.	-	-	-	-	-	-	-	-	-	1.0	24	16	8	4' FLARE
112+58	RT	PE	AGG.	AGG.	-	-	-	-	-	-	-	-	-	1.0	24	16	8	4' FLARE
113+00	LT	PE	AGG.	AGG.	-	-	-	-	-	-	-	-	-	1.7	38	30	8	4' FLARE
113+43	RT	PE	AGG.	AGG.	-	-	-	-	-	-	-	-	-	1.0	23	15	8	4' FLARE
113+64	LT	PE	AGG.	AGG.	-	-	-	-	-	-	-	-	-	1.1	26	18	8	4' FLARE
115+12	LT	PE	AGG.	AGG.	-	-	-	-	-	-	-	-	-	1.1	25	17	8	4' FLARE
115+13	RT	SIDE ROAD	O&C	HMA	55.0	52.7	-	-	-	15	-	6.0	-	55	15	20	20/20	
116+04	LT	PE	AGG.	AGG.	-	-	-	-	-	-	-	-	-	1.0	23	15	8	4' FLARE
117+25	LT	PE	AGG.	AGG.	-	-	-	-	-	-	-	-	-	1.4	31	23	8	4' FLARE
117+26	RT	PE	AGG.	AGG.	-	-	-	-	-	-	-	-	-	1.2	28	20	8	4' FLARE
117+76	RT	PE	AGG.	AGG.	-	-	-	-	-	-	-	-	-	1.9	42	34	8	4' FLARE
119+46	LT	SIDE ROAD	O&C	HMA	-	-	494	135.2	12.0%	599	105	-	50.0	166	16	109	75/75	
119+46	RT	SIDE ROAD	O&C	HMA	-	-	518	135.2	12.0%	628	105	-	53.0	166	16	121	75/75	
121+62	LT	PE	AGG.	AGG.	-	-	-	-	-	-	-	-	-	1.0	24	16	8	4' FLARE
121+84	RT	PE	AGG.	AGG.	-	-	-	-	-	-	-	-	-	0.9	21	13	8	4' FLARE
122+26	LT	PE	AGG.	AGG.	-	-	-	-	-	-	-	-	-	0.7	18	10	8	4' FLARE
123+00	LT	PE	AGG.	AGG.	-	-	-	-	-	-	-	-	-	2.2	48	40	8	4' FLARE
123+64	RT	SIDE ROAD	O&C	HMA	135.0	133.9	-	-	-	35	-	15.0	14.9	70	16	40	40/290	
124+20	RT	PE	AGG.	AGG.	-	-	-	-	-	-	-	-	-	1.0	24	16	8	4' FLARE
124+25	LT	PE	AGG.	AGG.	-	-	-	-	-	-	-	-	-	1.3	30	22	8	4' FLARE
125+57	RT	PE	AGG.	AGG.	-	-	-	-	-	-	-	-	-	1.1	26	18	8	4' FLARE
125+91	LT	SIDE ROAD	AGG.	AGG.	-	-	-	-	-	-	-	-	-	3.8	24	14	20	20/25
126+38	LT	PE	AGG.	AGG.	-	-	-	-	-	-	-	-	-	1.7	38	30	8	4' FLARE
126+72	LT	SIDE ROAD	AGG.	AGG.	-	-	-	-	-	-	-	-	-	13.1	27	50	26	MATCH EX.
128+38	LT	PE	AGG.	AGG.	-	-	-	-	-	-	-	-	-	0.9	22	14	8	4' FLARE
TOTALS =					650.0	281.1	1012.0			1227.0	290.0	790.0	177.0	106.6				

SIGNAGE				
ITEM NUMBER		72000100		72800100
LOCATION	STATION	SIGN PANEL - TYPE 1	PANEL TYPE	TELESCOPING STEEL SIGN SUPPORT
		(SQ FT)	(SQ FT)	(FOOT)
LT.	STA. 119+11.23	9.0	R1-1 (36 X 36)	16.0
RT.	STA. 119+80.64	9.0	R1-1 (36 X 36)	16.0
TOTAL =		18.0		32.0

CHARLESTON ENGINEERING, INC.  
CONSULTING ENGINEERS - LAND SURVEYORS  
105 NORTH KITCHELL AVENUE OLNEY, ILLINOIS 62450  
P.O. BOX 397 (618) 392-0736  
ILLINOIS DEPARTMENT OF PROFESSIONAL REGULATION REGISTRATION #184.003513

DESIGNED -- BMB  
DRAWN -- BMB  
CHECKED -- BMB  
DATE -- 1-23-2024

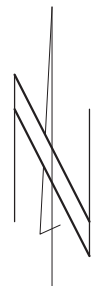
REVISED --  
REVISED --  
REVISED --  
REVISED --

STATE OF ILLINOIS  
DEPARTMENT OF TRANSPORTATION

SCHEDULES OF QUANTITIES

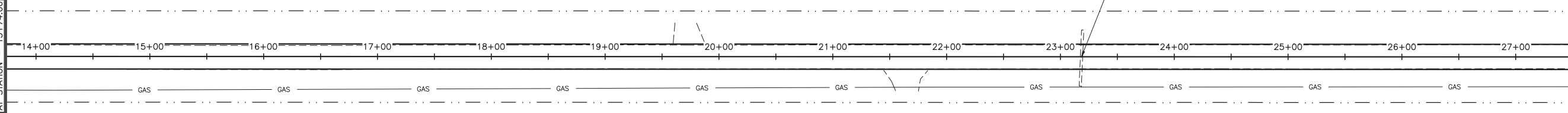
ROUTE	SECTION	COUNTY	TOTAL SHEETS	SHEET NO.
FAS 2803	21-00129-00-FP	RICHLAND	23	5
CONTRACT 95949		ILLINOIS	XDPC(892)	



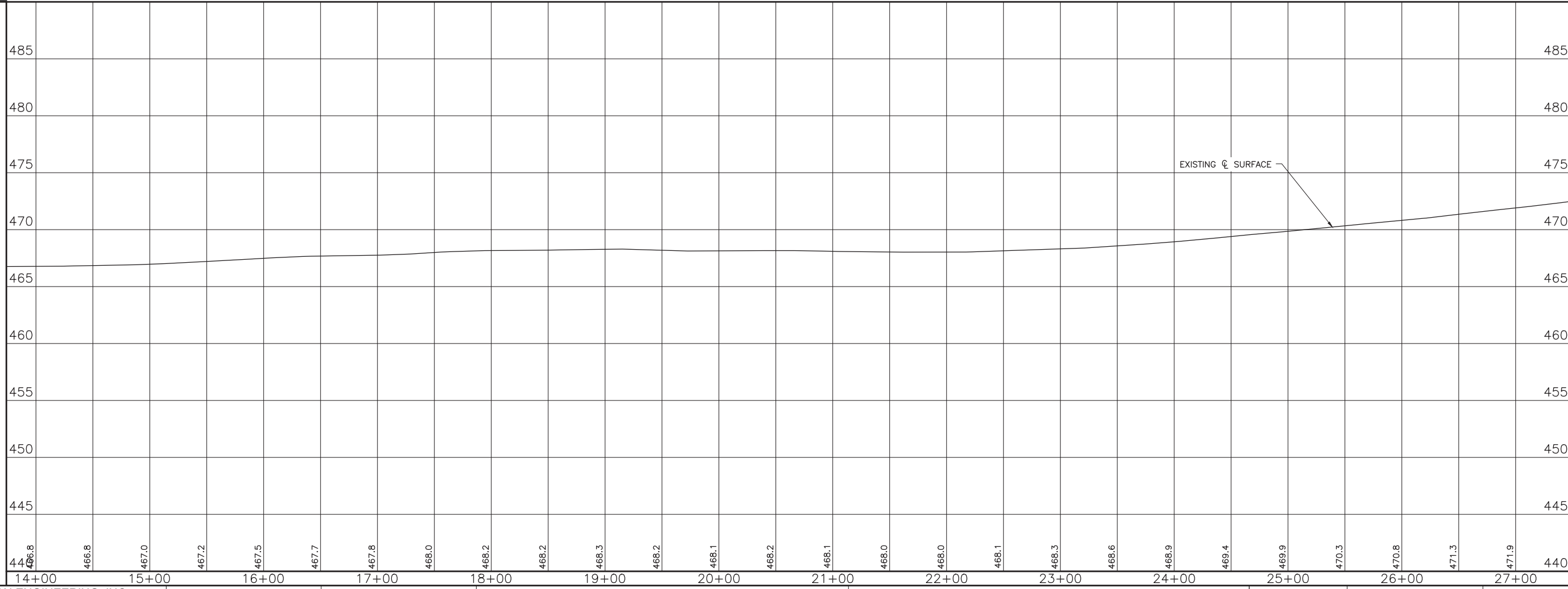


SCALES:  
 1" = 50' HOR  
 1" = 5' VER

MATCH LINE - 1  
 AT STATION - 13+74.00



MATCH LINE - 2  
 AT STATION - 27+48.00



**CHARLESTON ENGINEERING, INC.**  
 CONSULTING ENGINEERS - LAND SURVEYORS  
 105 NORTH KITCHELL AVENUE OLNEY, ILLINOIS 62450  
 P.O. BOX 397 (618) 392-0736  
 ILLINOIS DEPARTMENT OF PROFESSIONAL REGULATION REGISTRATION #184.003513

DESIGNED - BMB	REVISED -
DRAWN - BMB	REVISED -
CHECKED - BMB	REVISED -
DATE - 1-23-2024	REVISED -

STATE OF ILLINOIS  
 DEPARTMENT OF TRANSPORTATION

PLAN AND PROFILE

ROUTE	SECTION	COUNTY	TOTAL SHEETS	SHEET NO.
FAS 2803	21-00129-00-FP	RICHLAND	23	7
CONTRACT 95949		ILLINOIS	XDPC(892)	

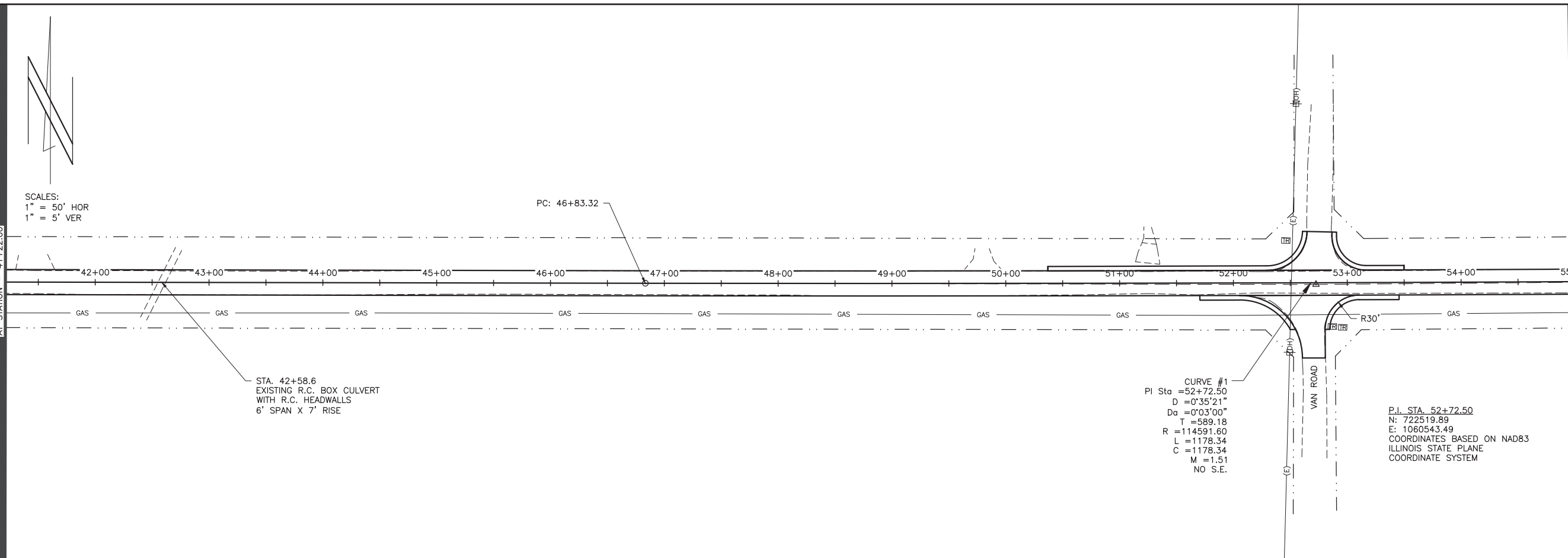




SCALES:  
 1" = 50' HOR  
 1" = 5' VER

MATCH LINE - 3  
 AT STATION - 41+22.00

MATCH LINE - 4  
 AT STATION - 54+96.00

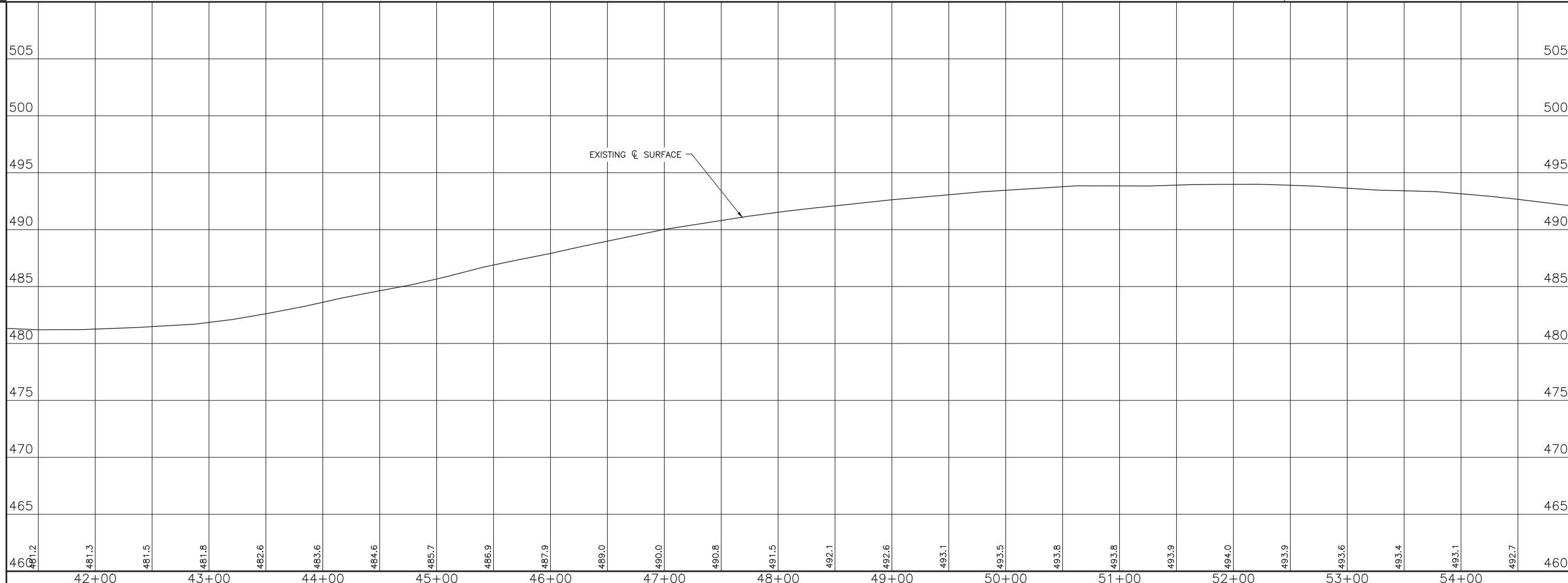


STA. 42+58.6  
 EXISTING R.C. BOX CULVERT  
 WITH R.C. HEADWALLS  
 6' SPAN X 7' RISE

PC: 46+83.32

CURVE #1  
 PI Sta = 52+72.50  
 D = 0°35'21"  
 Da = 0°03'00"  
 T = 589.18  
 R = 114591.60  
 L = 1178.34  
 C = 1178.34  
 M = 1.51  
 NO S.E.

P.I. STA. 52+72.50  
 N: 722519.89  
 E: 1060543.49  
 COORDINATES BASED ON NAD83  
 ILLINOIS STATE PLANE  
 COORDINATE SYSTEM



EXISTING & SURFACE

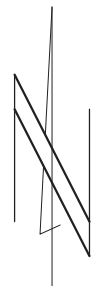
**CHARLESTON ENGINEERING, INC.**  
 CONSULTING ENGINEERS - LAND SURVEYORS  
 105 NORTH KITCHELL AVENUE OLNEY, ILLINOIS 62450  
 P.O. BOX 387 (618) 392-0736  
 ILLINOIS DEPARTMENT OF PROFESSIONAL REGULATION REGISTRATION #184.003513

DESIGNED - BMB	REVISED -
DRAWN - BMB	REVISED -
CHECKED - BMB	REVISED -
DATE - 1-23-2024	REVISED -

STATE OF ILLINOIS  
 DEPARTMENT OF TRANSPORTATION

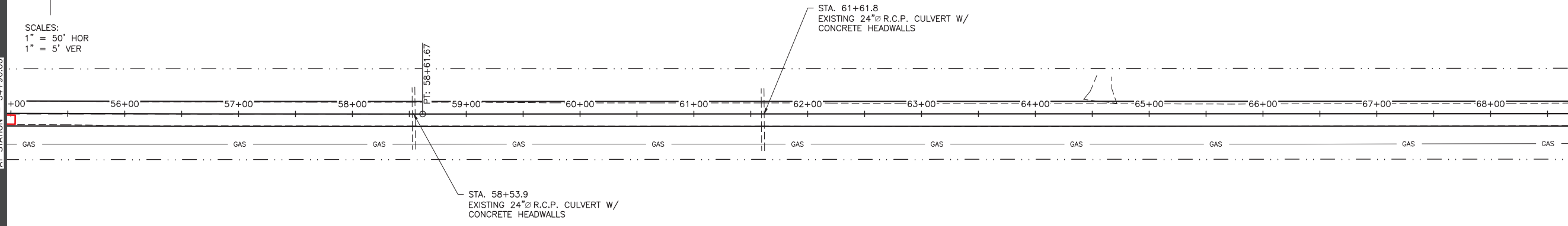
PLAN AND PROFILE

ROUTE	SECTION	COUNTY	TOTAL SHEETS	SHEET NO.
FAS 2803	21-00129-00-FP	RICHLAND	23	9
CONTRACT 95949		ILLINOIS	XDPC(892)	

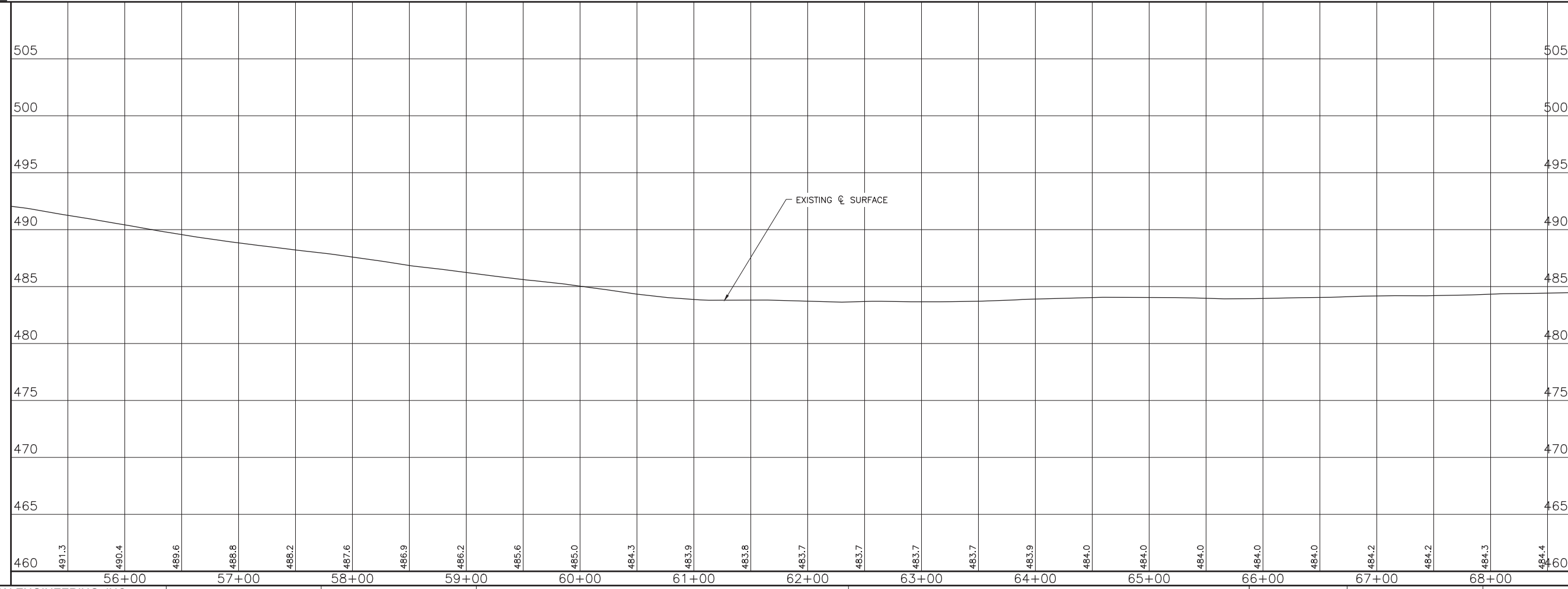


SCALES:  
1" = 50' HOR  
1" = 5' VER

MATCH LINE - 4  
AT STATION - 54+96.00



MATCH LINE - 5  
AT STATION - 68+70.00



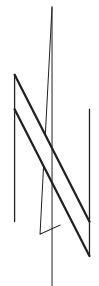
**CHARLESTON ENGINEERING, INC.**  
CONSULTING ENGINEERS - LAND SURVEYORS  
105 NORTH KITCHELL AVENUE OLNEY, ILLINOIS 62450  
P.O. BOX 387 (618) 392-0736  
ILLINOIS DEPARTMENT OF PROFESSIONAL REGULATION REGISTRATION #184.003513

DESIGNED - BMB	REVISED -
DRAWN - BMB	REVISED -
CHECKED - BMB	REVISED -
DATE - 1-23-2024	REVISED -

STATE OF ILLINOIS  
DEPARTMENT OF TRANSPORTATION

PLAN AND PROFILE

ROUTE	SECTION	COUNTY	TOTAL SHEETS	SHEET NO.
FAS 2803	21-00129-00-FP	RICHLAND	23	10
CONTRACT 95949		ILLINOIS	XDPC(892)	



SCALES:  
 1" = 50' HOR  
 1" = 5' VER

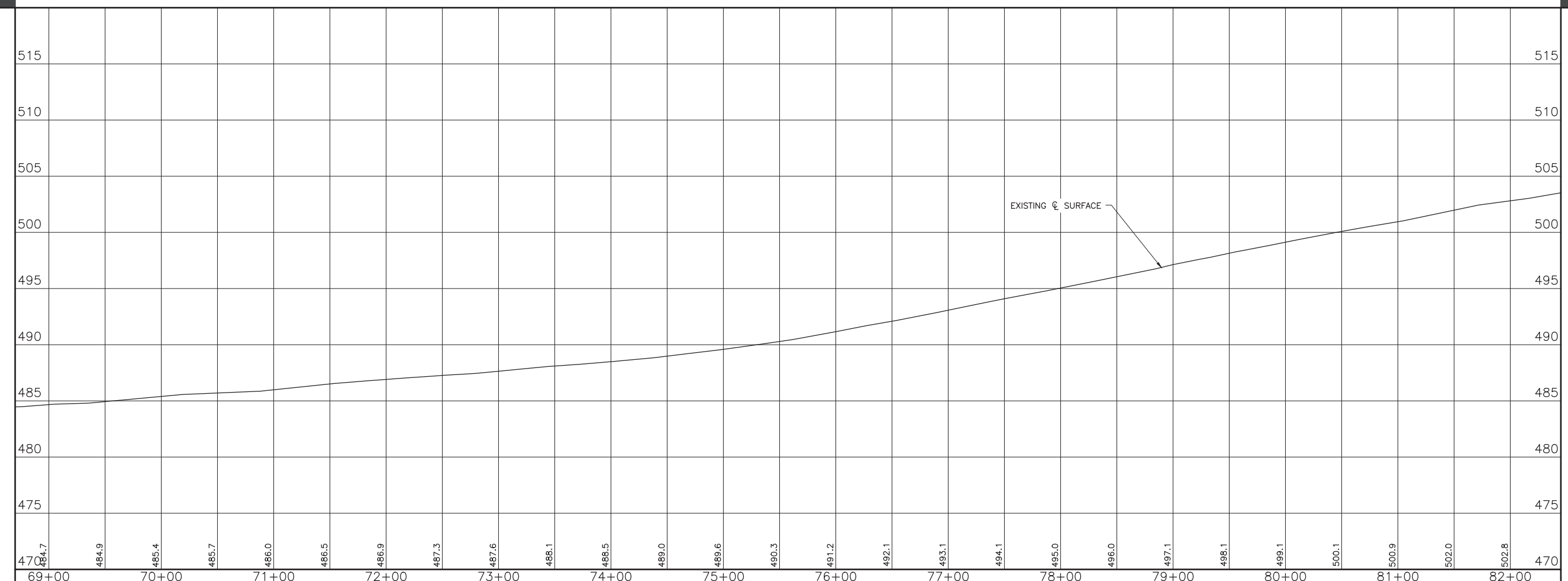
MATCH LINE - 5  
 AT STATION = 68+70.00

MATCH LINE - 6  
 AT STATION = 82+45.00

69+00 70+00 71+00 72+00 73+00 74+00 75+00 76+00 77+00 78+00 79+00 80+00 81+00 82+00

GAS GAS GAS GAS GAS GAS GAS GAS GAS GAS GAS

STA. 70+22.1  
 EXISTING R.C. BOX CULVERT  
 WITH R.C. HEADWALLS  
 12' SPAN X 4' RISE



**CHARLESTON ENGINEERING, INC.**  
 CONSULTING ENGINEERS - LAND SURVEYORS  
 105 NORTH KITCHELL AVENUE OLNEY, ILLINOIS 62450  
 P.O. BOX 397 (618) 392-0736  
 ILLINOIS DEPARTMENT OF PROFESSIONAL REGULATION REGISTRATION #184.003513

DESIGNED - BMB	REVISED -
DRAWN - BMB	REVISED -
CHECKED - BMB	REVISED -
DATE - 1-23-2024	REVISED -

STATE OF ILLINOIS  
 DEPARTMENT OF TRANSPORTATION

PLAN AND PROFILE

ROUTE	SECTION	COUNTY	TOTAL SHEETS	SHEET NO.
FAS 2803	21-00129-00-FP	RICHLAND	23	11
CONTRACT 95949		ILLINOIS	XDPC(892)	



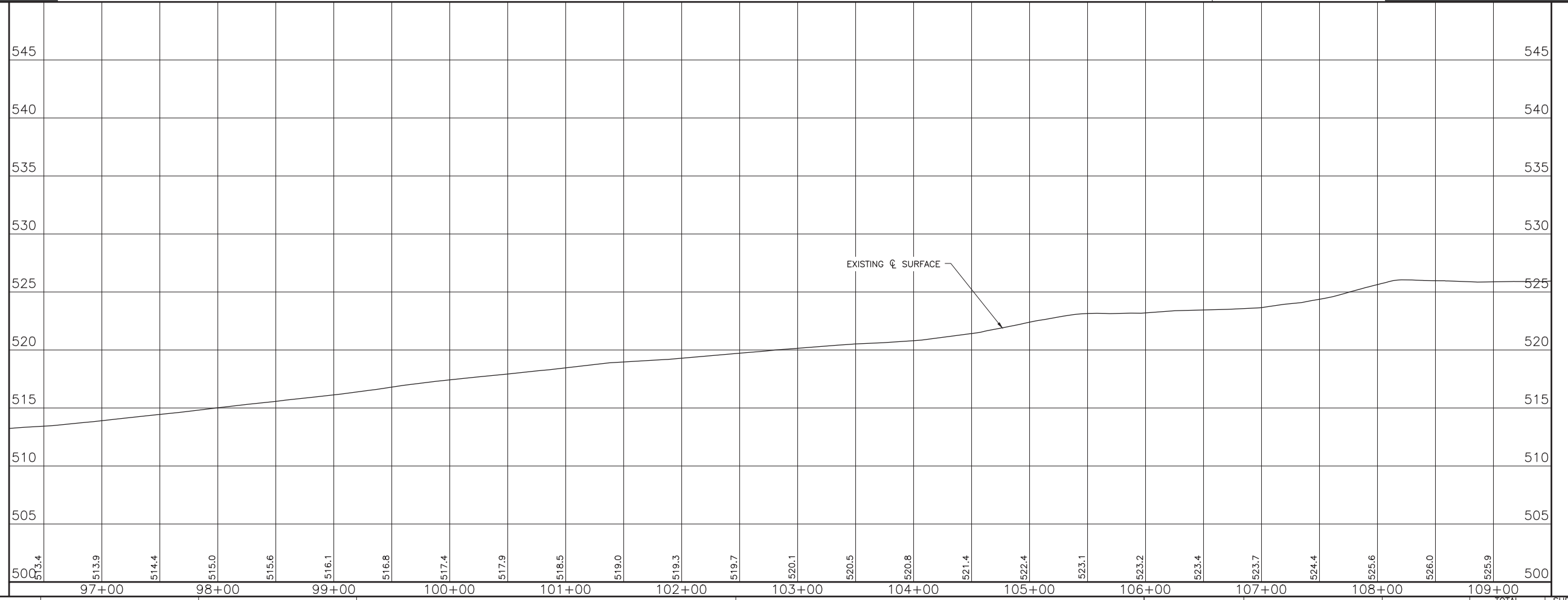
P.I. STA. 105+32.84  
 N: 722711.65  
 E: 1065800.35  
 COORDINATES BASED ON NAD83  
 ILLINOIS STATE PLANE  
 COORDINATE SYSTEM

SCALES:  
 1" = 50' HOR  
 1" = 5' VER

MATCH LINE - 7  
 AT STATION - 96+20.00

MATCH LINE - B  
 AT STATION - 109+95.08

P.I. STA. 108+13.90  
 N: 722396.47  
 E: 1065782.06  
 COORDINATES BASED ON NAD83  
 ILLINOIS STATE PLANE  
 COORDINATE SYSTEM



500 505 510 515 520 525 530 535 540 545

97+00 98+00 99+00 100+00 101+00 102+00 103+00 104+00 105+00 106+00 107+00 108+00 109+00

**CHARLESTON ENGINEERING, INC.**  
 CONSULTING ENGINEERS - LAND SURVEYORS  
 105 NORTH KITCHELL AVENUE OLNEY, ILLINOIS 62450  
 P.O. BOX 387 (618) 392-0736  
 ILLINOIS DEPARTMENT OF PROFESSIONAL REGULATION REGISTRATION #184.003513

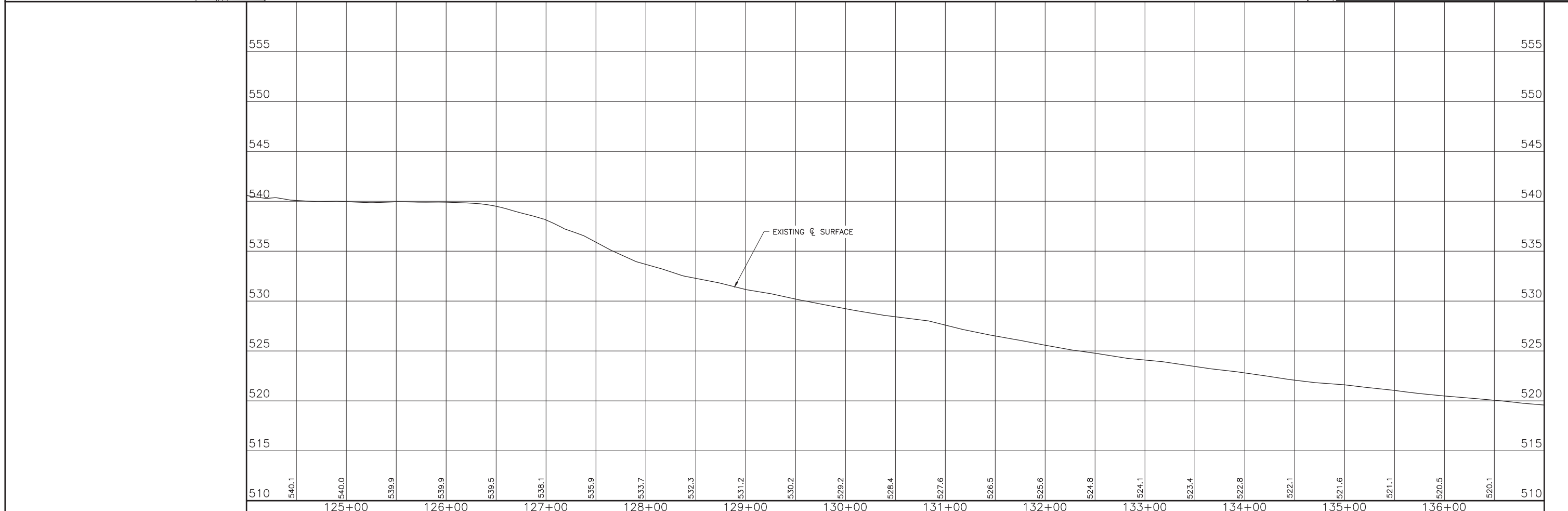
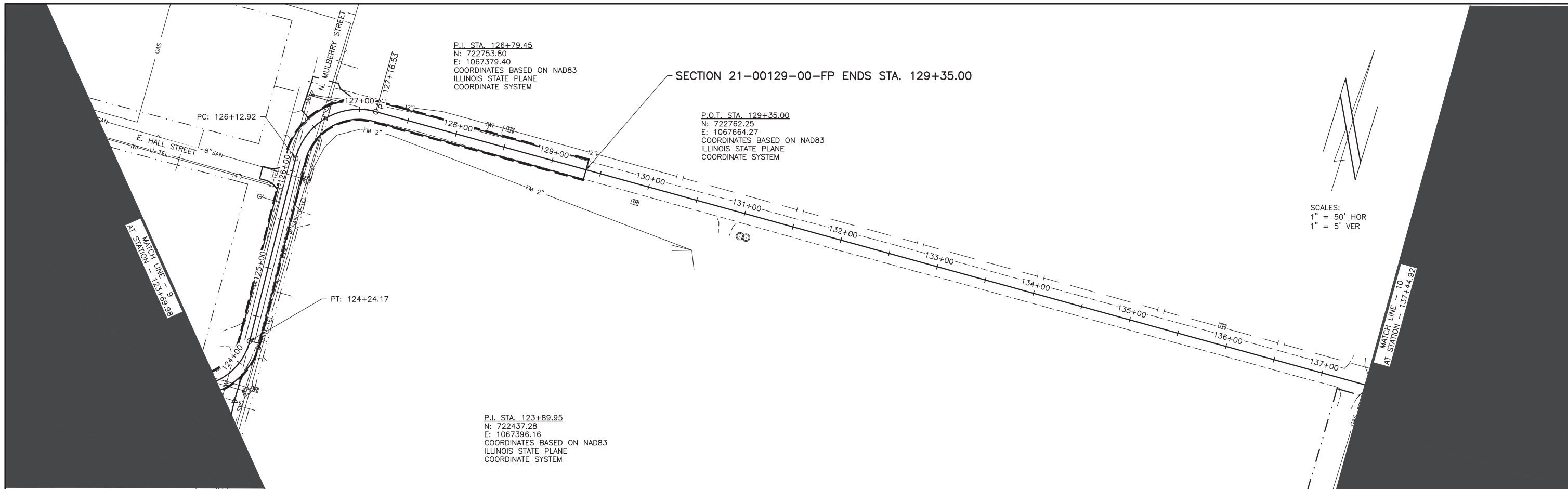
DESIGNED - BMB	REVISED -
DRAWN - BMB	REVISED -
CHECKED - BMB	REVISED -
DATE - 1-23-2024	REVISED -

STATE OF ILLINOIS  
 DEPARTMENT OF TRANSPORTATION

PLAN AND PROFILE

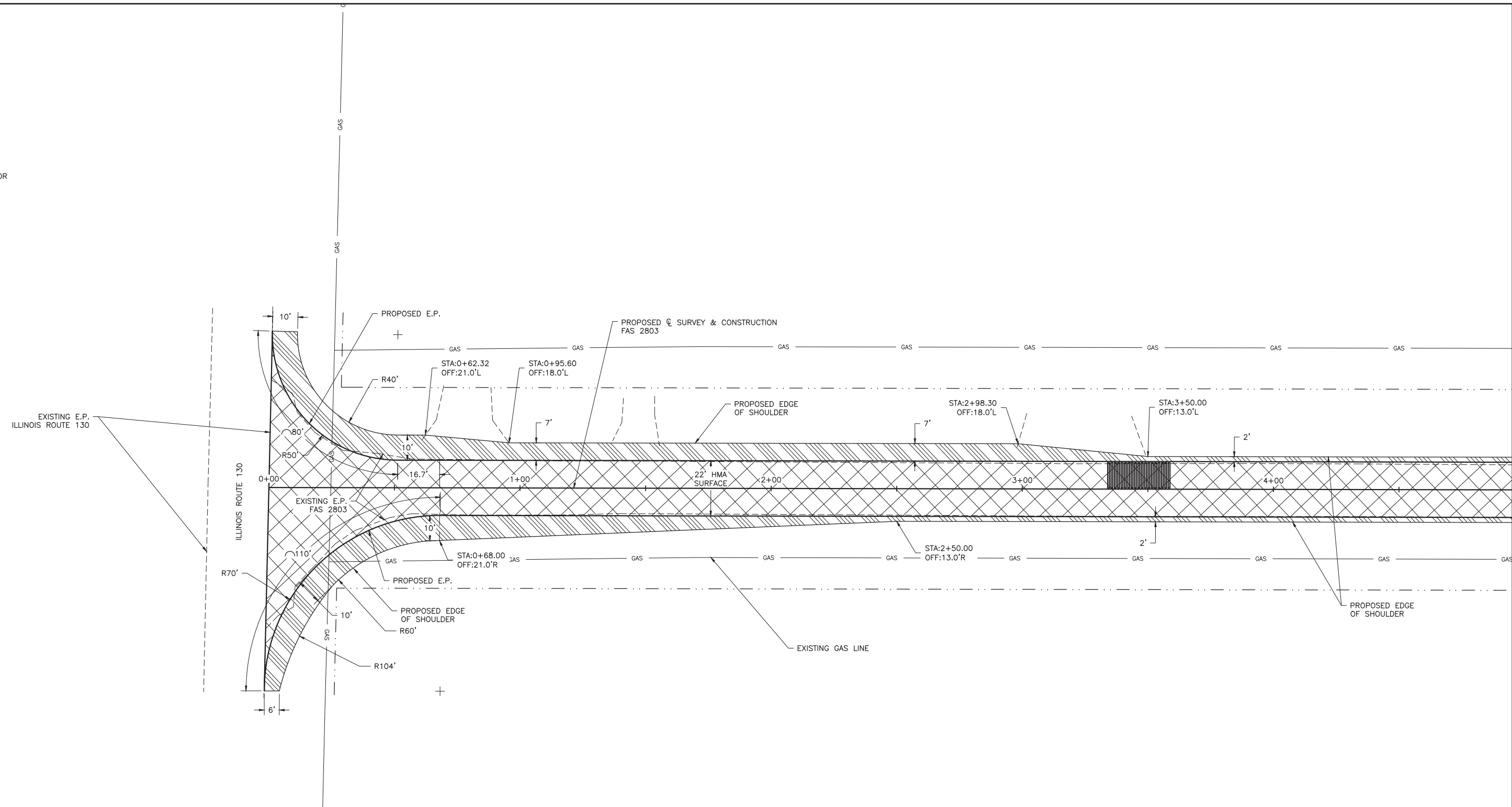
ROUTE	SECTION	COUNTY	TOTAL SHEETS	SHEET NO.
FAS 2803	21-00129-00-FP	RICHLAND	23	13
CONTRACT 95949		ILLINOIS	XDPC(892)	



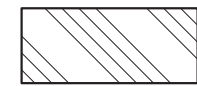


<b>CHARLESTON ENGINEERING, INC.</b> CONSULTING ENGINEERS - LAND SURVEYORS 105 NORTH KITCHELL AVENUE    OLNEY, ILLINOIS 62450 P.O. BOX 387    (618) 392-0736 <small>ILLINOIS DEPARTMENT OF PROFESSIONAL REGULATION REGISTRATION #184.003513</small>	DESIGNED - BMB	REVISED -	STATE OF ILLINOIS DEPARTMENT OF TRANSPORTATION	PLAN AND PROFILE		ROUTE	SECTION	COUNTY	TOTAL SHEETS	SHEET NO.
	DRAWN - BMB	REVISED -		FAS 2803	21-00129-00-FP	RICHLAND	23	15		
	CHECKED - BMB	REVISED -		CONTRACT 95949		ILLINOIS	XDPC(892)			
	DATE - 1-23-2024	REVISED -								

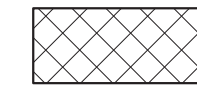
SCALE:  
1" = 10' HOR



HATCH LEGEND



PROPOSED AGGREGATE WEDGE SHOULDERS, TYPE B



PROPOSED SURFACE REMOVAL, VARIABLE DEPTH (SPECIAL) AND POLYMERIZED HOT-MIX ASPHALT SURFACE COURSE, IL-9.5, MIX "C", N70

**CHARLESTON ENGINEERING, INC.**  
CONSULTING ENGINEERS - LAND SURVEYORS  
105 NORTH KITCHELL AVENUE OLNEY, ILLINOIS 62450  
P.O. BOX 387 (618) 392-0736  
ILLINOIS DEPARTMENT OF PROFESSIONAL REGULATION REGISTRATION #184.003513

DESIGNED - BMB	REVISED -
DRAWN - BMB	REVISED -
CHECKED - BMB	REVISED -
DATE - 1-23-2024	REVISED -

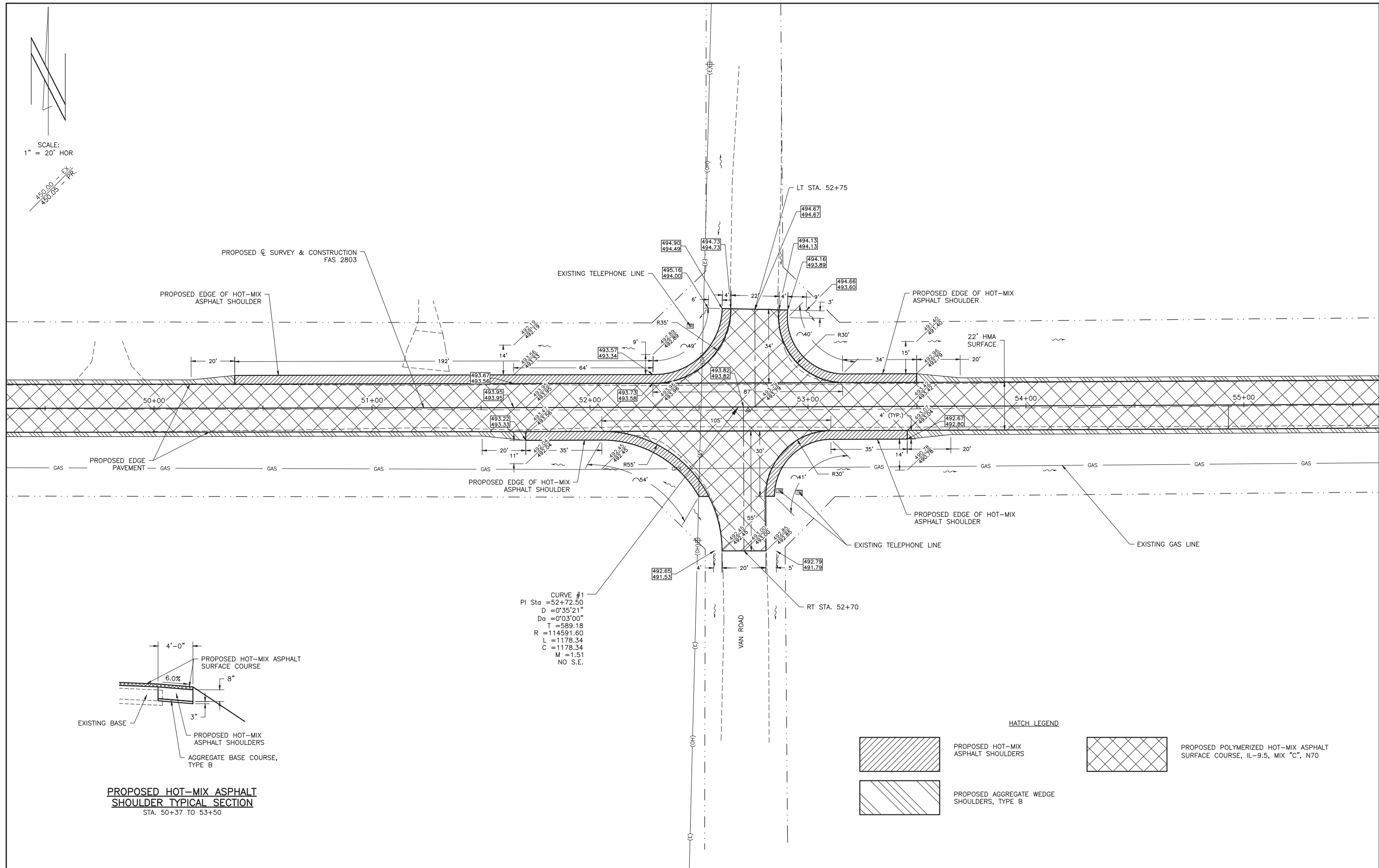
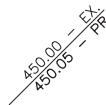
STATE OF ILLINOIS  
DEPARTMENT OF TRANSPORTATION

INTERSECTION DETAIL

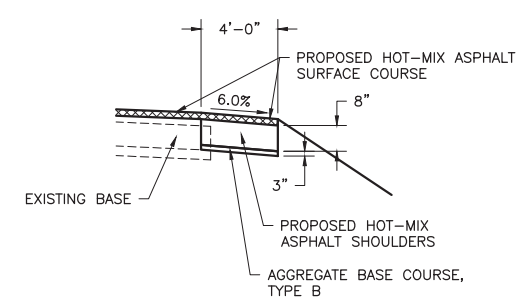
ROUTE	SECTION	COUNTY	TOTAL SHEETS	SHEET NO.
FAS 2803	21-00129-00-FP	RICHLAND	23	16
CONTRACT 95949		ILLINOIS	XDPC(892)	



SCALE:  
1" = 20' HOR



CURVE #1  
 PI Sta = 52+72.50  
 D = 0°35'21"  
 Da = 0°03'00"  
 T = 589.18  
 R = 114591.60  
 L = 1178.34  
 C = 1178.34  
 M = 1.51  
 NO S.E.

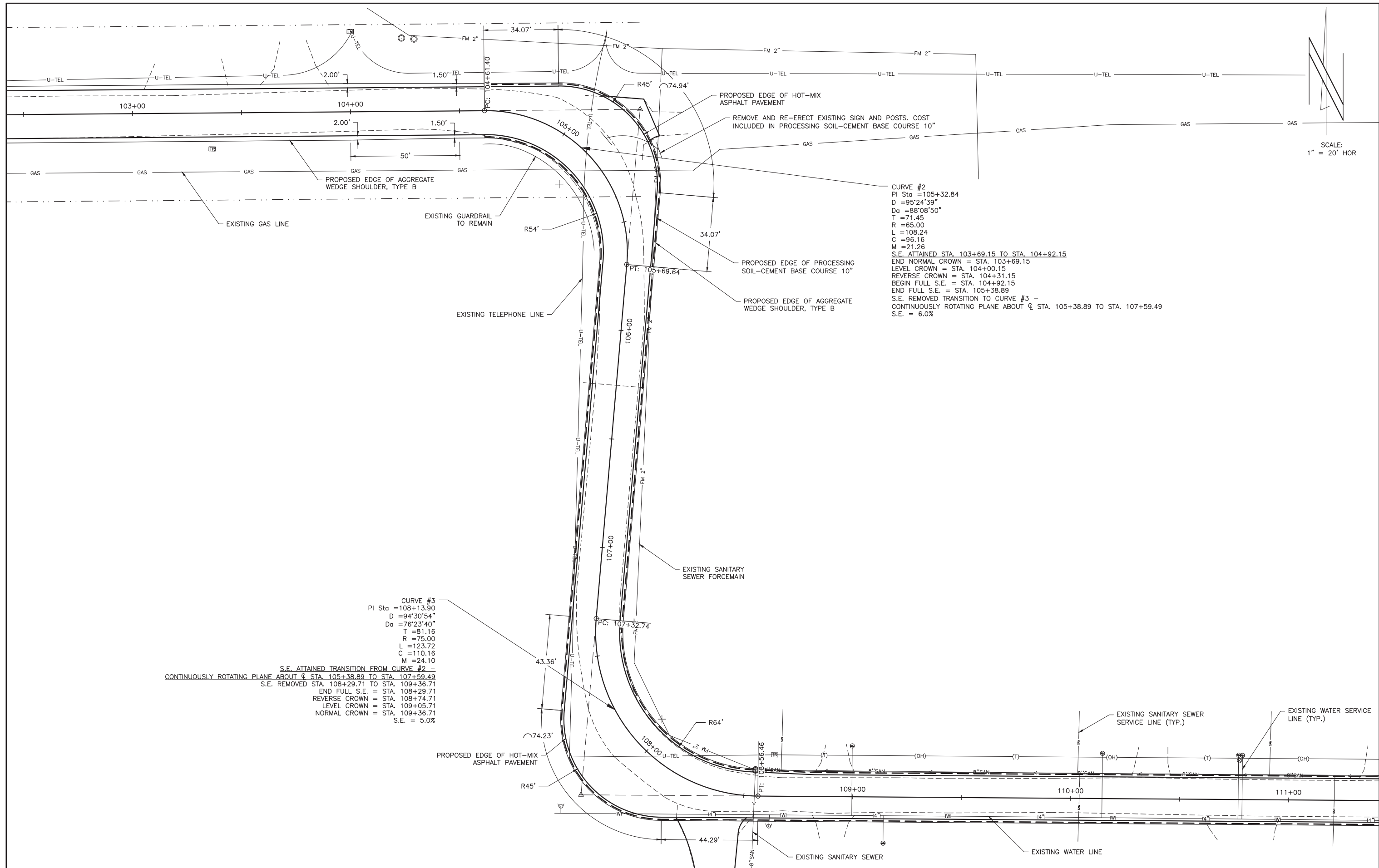


**PROPOSED HOT-MIX ASPHALT SHOULDER TYPICAL SECTION**  
 STA. 50+37 TO 53+50

HATCH LEGEND

	PROPOSED HOT-MIX ASPHALT SHOULDERS		PROPOSED POLYMERIZED HOT-MIX ASPHALT SURFACE COURSE, IL-9.5, MIX "C", N70
	PROPOSED AGGREGATE WEDGE SHOULDERS, TYPE B		

<b>CHARLESTON ENGINEERING, INC.</b> CONSULTING ENGINEERS - LAND SURVEYORS 105 NORTH KITCHELL AVENUE OLNEY, ILLINOIS 62450 P.O. BOX 387 (618) 392-0736 ILLINOIS DEPARTMENT OF PROFESSIONAL REGULATION REGISTRATION #184.003513	DESIGNED - BMB	REVISED -	STATE OF ILLINOIS DEPARTMENT OF TRANSPORTATION	INTERSECTION DETAIL - CALHOUN LANE AND VAN ROAD	ROUTE	SECTION	COUNTY	TOTAL SHEETS	SHEET NO.
	DRAWN - BMB	REVISED -			FAS 2803	21-00129-00-FP	RICHLAND	23	17
	CHECKED - BMB	REVISED -			CONTRACT 95949		ILLINOIS	XDPC(892)	
	DATE - 1-23-2024	REVISED -							



**CURVE #2**  
 PI Sta = 105+32.84  
 D = 95'24'39"  
 Da = 88'08'50"  
 T = 71.45  
 R = 65.00  
 L = 108.24  
 C = 96.16  
 M = 21.26  
 S.E. ATTAINED STA. 103+69.15 TO STA. 104+92.15  
 END NORMAL CROWN = STA. 103+69.15  
 LEVEL CROWN = STA. 104+00.15  
 REVERSE CROWN = STA. 104+31.15  
 BEGIN FULL S.E. = STA. 104+92.15  
 END FULL S.E. = STA. 105+38.89  
 S.E. REMOVED TRANSITION TO CURVE #3 -  
 CONTINUOUSLY ROTATING PLANE ABOUT C STA. 105+38.89 TO STA. 107+59.49  
 S.E. = 6.0%

**CURVE #3**  
 PI Sta = 108+13.90  
 D = 94'30'54"  
 Da = 76'23'40"  
 T = 81.16  
 R = 75.00  
 L = 123.72  
 C = 110.16  
 M = 24.10  
 S.E. ATTAINED TRANSITION FROM CURVE #2 -  
 CONTINUOUSLY ROTATING PLANE ABOUT C STA. 105+38.89 TO STA. 107+59.49  
 S.E. REMOVED STA. 108+29.71 TO STA. 109+36.71  
 END FULL S.E. = STA. 108+29.71  
 REVERSE CROWN = STA. 108+74.71  
 LEVEL CROWN = STA. 109+05.71  
 NORMAL CROWN = STA. 109+36.71  
 S.E. = 5.0%

**CHARLESTON ENGINEERING, INC.**  
 CONSULTING ENGINEERS - LAND SURVEYORS  
 105 NORTH KITCHELL AVENUE OLMNEY, ILLINOIS 62450  
 P.O. BOX 387 (618) 392-0736  
 ILLINOIS DEPARTMENT OF PROFESSIONAL REGULATION REGISTRATION #184.003513

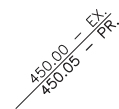
DESIGNED - BMB	REVISED -
DRAWN - BMB	REVISED -
CHECKED - BMB	REVISED -
DATE - 1-23-2024	REVISED -

STATE OF ILLINOIS  
 DEPARTMENT OF TRANSPORTATION

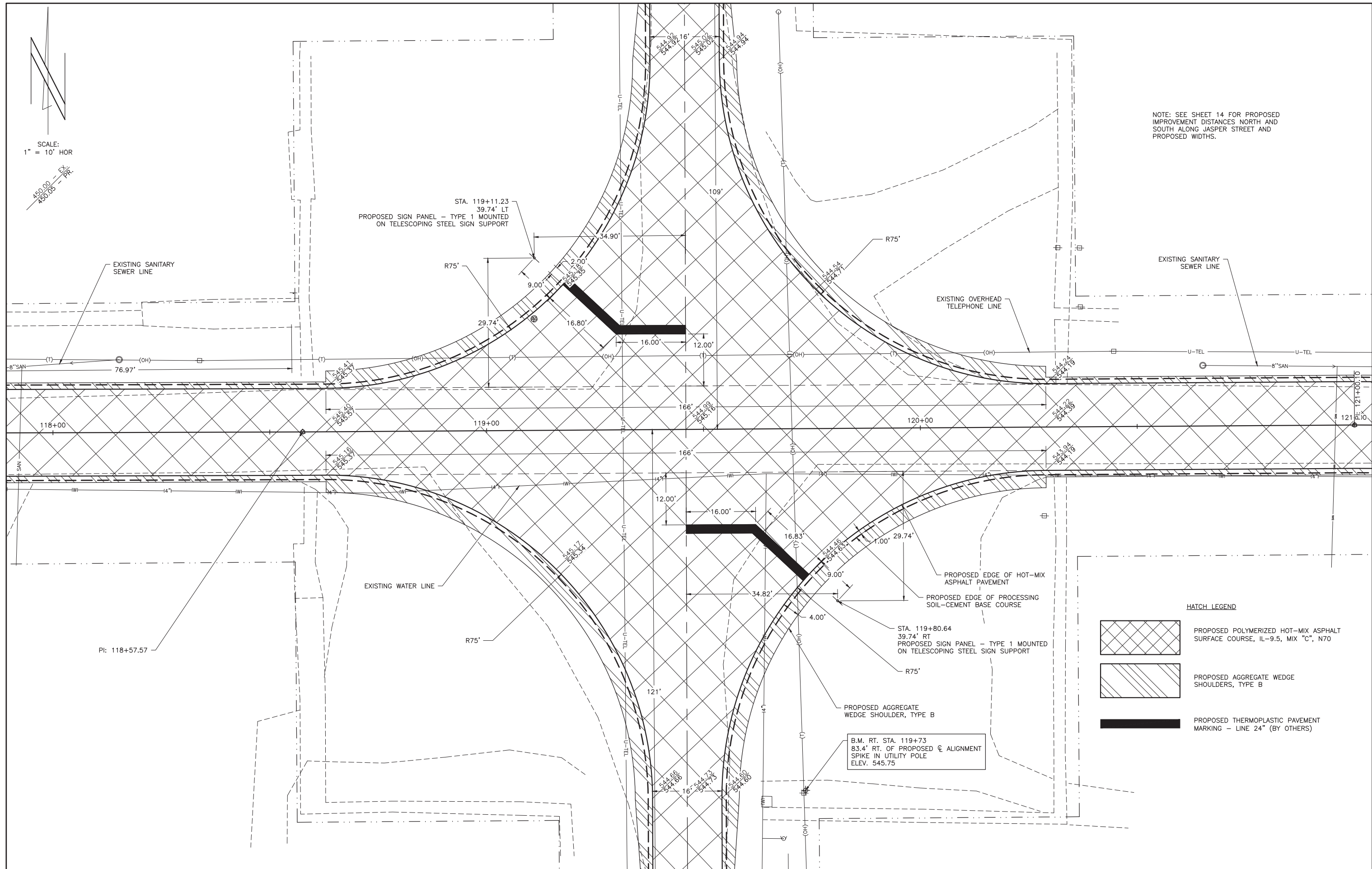
INTERSECTION DETAIL

ROUTE	SECTION	COUNTY	TOTAL SHEETS	SHEET NO.
FAS 2803	21-00129-00-FP	RICHLAND	23	18
CONTRACT 95949		ILLINOIS	XDPC(892)	

SCALE:  
1" = 10' HOR



NOTE: SEE SHEET 14 FOR PROPOSED IMPROVEMENT DISTANCES NORTH AND SOUTH ALONG JASPER STREET AND PROPOSED WIDTHS.



**HATCH LEGEND**

	PROPOSED POLYMERIZED HOT-MIX ASPHALT SURFACE COURSE, IL-9.5, MIX "C", N70
	PROPOSED AGGREGATE WEDGE SHOULDERS, TYPE B
	PROPOSED THERMOPLASTIC PAVEMENT MARKING - LINE 24" (BY OTHERS)

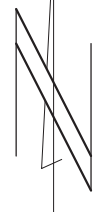
**CHARLESTON ENGINEERING, INC.**  
CONSULTING ENGINEERS - LAND SURVEYORS  
105 NORTH KITCHELL AVENUE OLNEY, ILLINOIS 62450  
P.O. BOX 387 (618) 392-0736  
ILLINOIS DEPARTMENT OF PROFESSIONAL REGULATION REGISTRATION #184.003513

DESIGNED - BMB	REVISED -
DRAWN - BMB	REVISED -
CHECKED - BMB	REVISED -
DATE - 1-23-2024	REVISED -

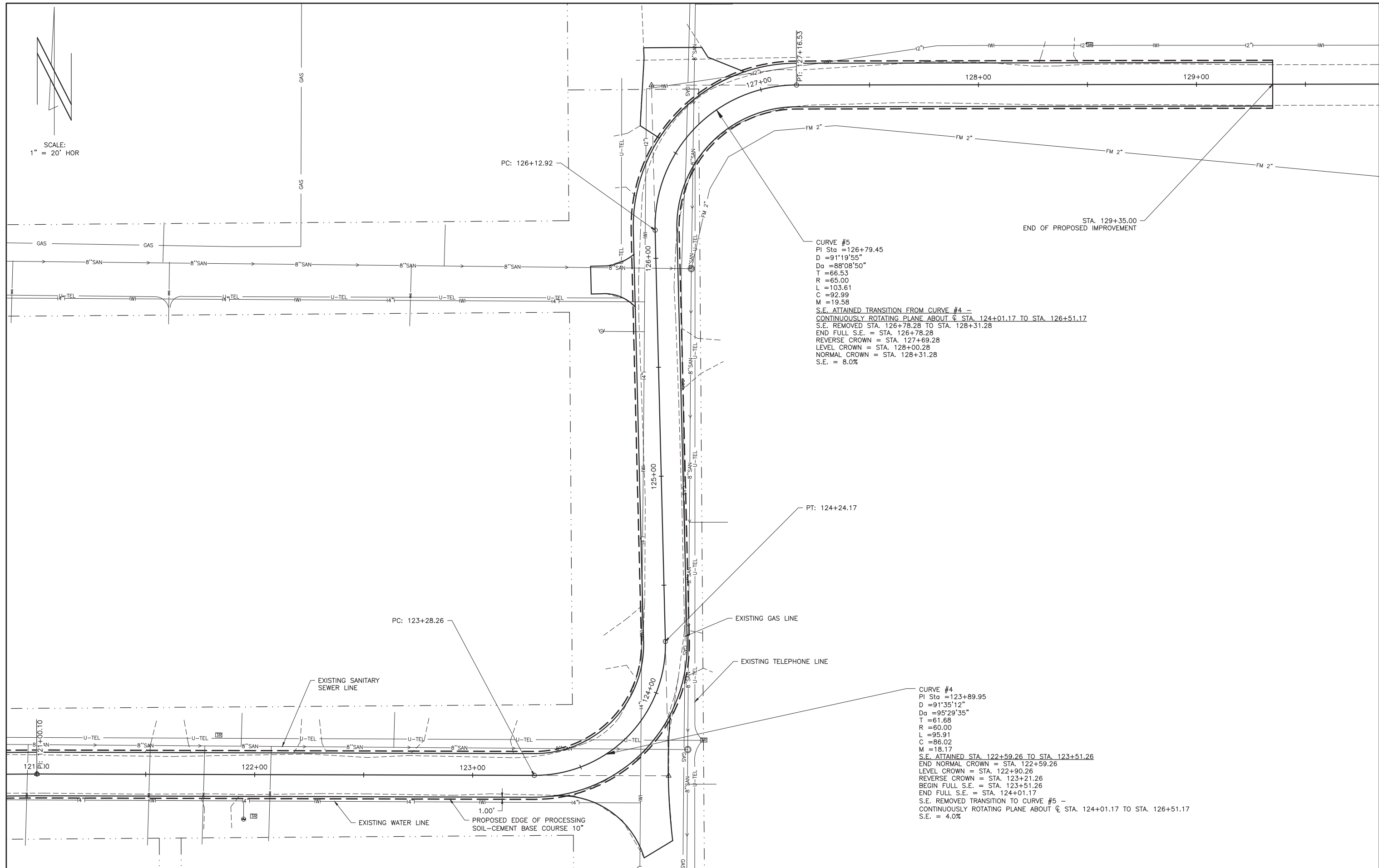
STATE OF ILLINOIS  
DEPARTMENT OF TRANSPORTATION

INTERSECTION DETAIL

ROUTE	SECTION	COUNTY	TOTAL SHEETS	SHEET NO.
FAS 2803	21-00129-00-FP	RICHLAND	23	19
CONTRACT 95949		ILLINOIS	XDPC(892)	



SCALE:  
1" = 20' HOR



**CURVE #5**  
 PI Sta = 126+79.45  
 D = 91°19'55"  
 Da = 88°08'50"  
 T = 66.53  
 R = 65.00  
 L = 103.61  
 C = 92.99  
 M = 19.58  
 S.E. ATTAINED TRANSITION FROM CURVE #4 -  
 CONTINUOUSLY ROTATING PLANE ABOUT C STA. 124+01.17 TO STA. 126+51.17  
 S.E. REMOVED STA. 126+78.28 TO STA. 128+31.28  
 END FULL S.E. = STA. 126+78.28  
 REVERSE CROWN = STA. 127+69.28  
 LEVEL CROWN = STA. 128+00.28  
 NORMAL CROWN = STA. 128+31.28  
 S.E. = 8.0%

**CURVE #4**  
 PI Sta = 123+89.95  
 D = 91°35'12"  
 Da = 95°29'35"  
 T = 61.68  
 R = 60.00  
 L = 95.91  
 C = 86.02  
 M = 18.17  
 S.E. ATTAINED STA. 122+59.26 TO STA. 123+51.26  
 END NORMAL CROWN = STA. 122+59.26  
 LEVEL CROWN = STA. 122+90.26  
 REVERSE CROWN = STA. 123+21.26  
 BEGIN FULL S.E. = STA. 123+51.26  
 END FULL S.E. = STA. 124+01.17  
 S.E. REMOVED TRANSITION TO CURVE #5 -  
 CONTINUOUSLY ROTATING PLANE ABOUT C STA. 124+01.17 TO STA. 126+51.17  
 S.E. = 4.0%

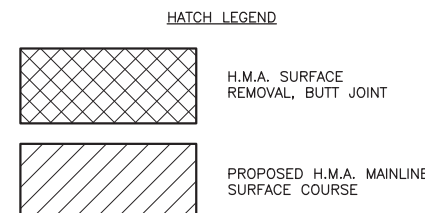
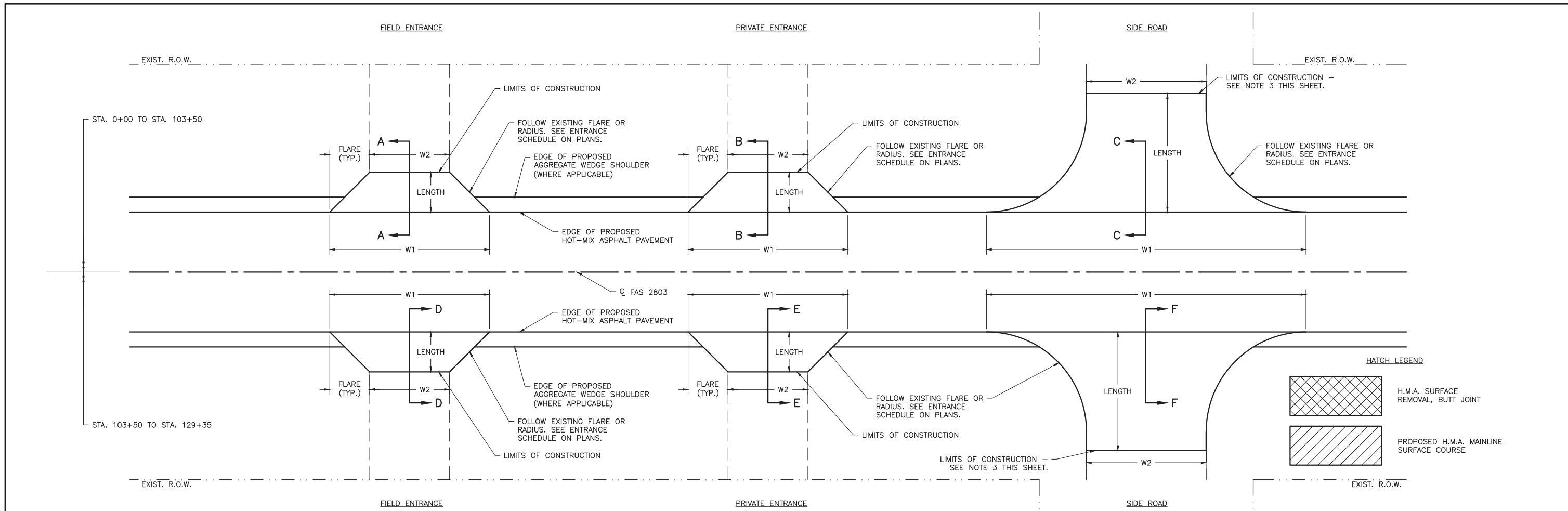
**CHARLESTON ENGINEERING, INC.**  
 CONSULTING ENGINEERS - LAND SURVEYORS  
 105 NORTH KITCHELL AVENUE OLNEY, ILLINOIS 62450  
 P.O. BOX 387 (618) 392-0736  
 ILLINOIS DEPARTMENT OF PROFESSIONAL REGULATION REGISTRATION #184.003513

DESIGNED - BMB	REVISED -
DRAWN - BMB	REVISED -
CHECKED - BMB	REVISED -
DATE - 1-23-2024	REVISED -

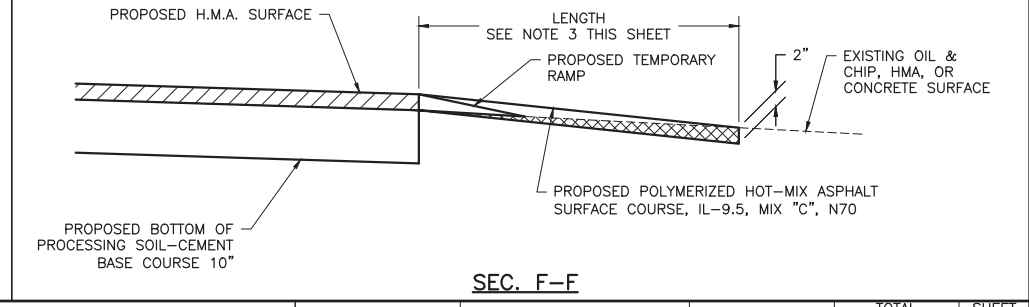
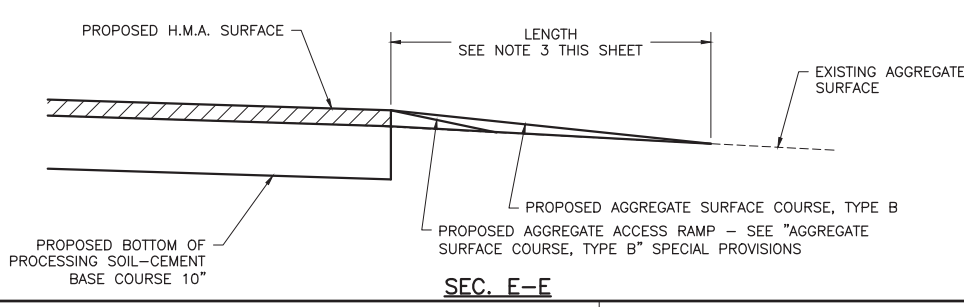
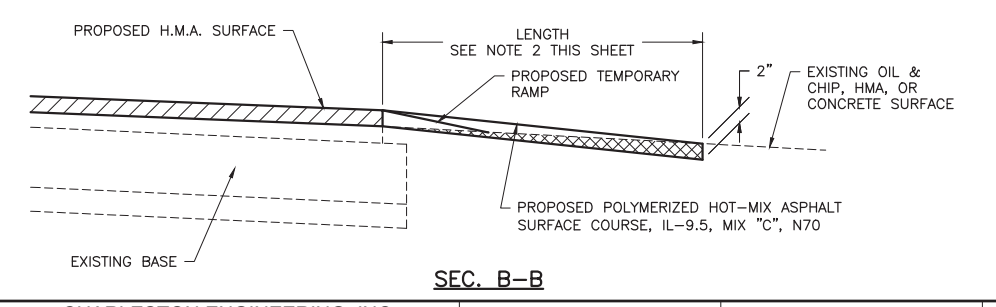
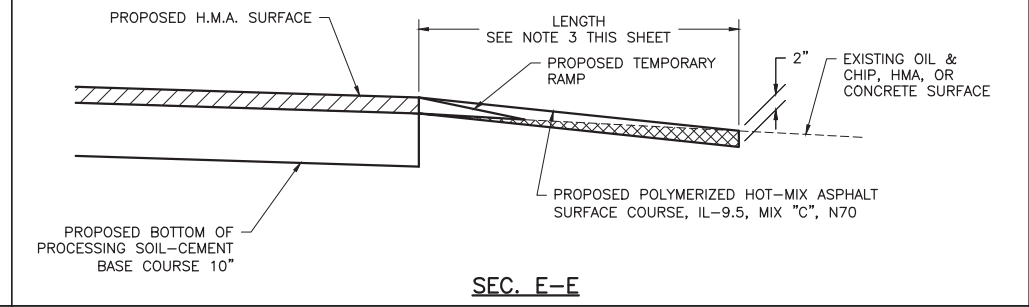
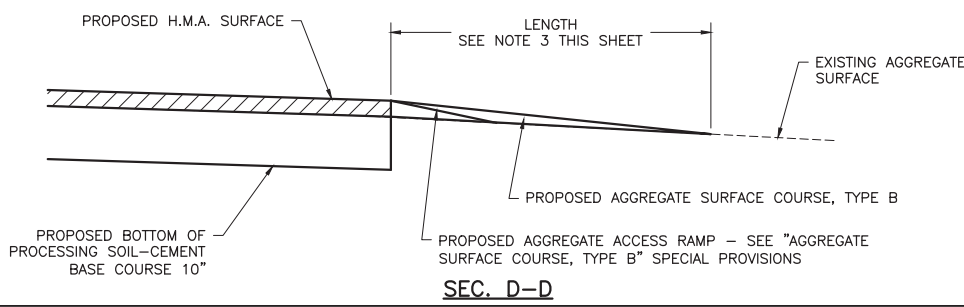
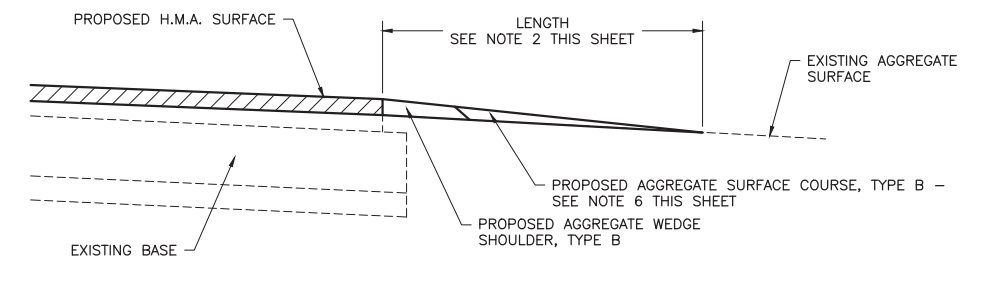
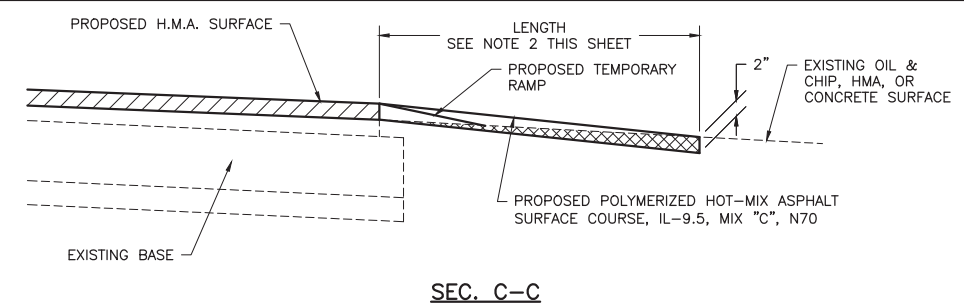
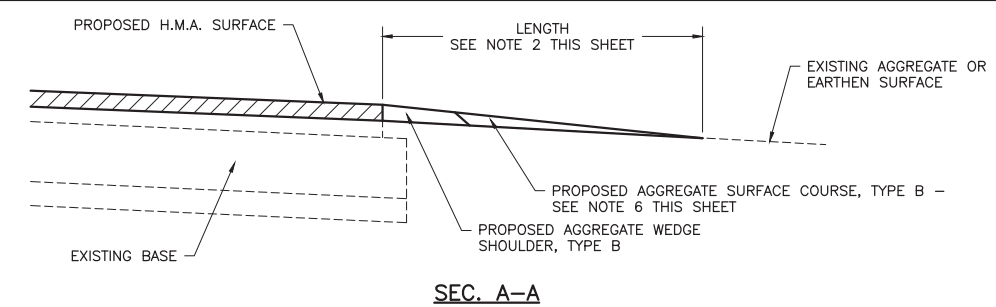
STATE OF ILLINOIS  
 DEPARTMENT OF TRANSPORTATION

INTERSECTION DETAIL

ROUTE	SECTION	COUNTY	TOTAL SHEETS	SHEET NO.
FAS 2803	21-00129-00-FP	RICHLAND	23	20
CONTRACT 95949		ILLINOIS	XDPC(892)	



- NOTES**
- MATCH EXISTING DIMENSIONS OF ALL FIELD ENTRANCES, PRIVATE ENTRANCES, AND SIDE ROADS. WIDTHS AND RADII SHOWN ON ENTRANCES AND SIDE ROADS SCHEDULE ON THE PLANS IS SHOWN AS A BASIS FOR ESTIMATING QUANTITIES.
  - FINAL LENGTH = 8 FEET UNLESS OTHERWISE NOTED ON PLANS. SEE ENTRANCE AND SIDE ROADS SCHEDULE ON THE PLANS FOR DISTANCES.
  - ALL "H.M.A. SURFACE REMOVAL, BUTT JOINT" OF EXISTING OIL & CHIP, HOT-MIX ASPHALT, OR PORTLAND CEMENT CONCRETE, OR AGGREGATE SIDE ROAD OR ENTRANCE SURFACES SHALL BE INCIDENTAL TO ITEM "POLYMERIZED HOT-MIX ASPHALT SURFACE COURSE, IL 9.5, MIX "C", N70." SEE "POLYMERIZED HOT-MIX ASPHALT SURFACE COURSE, IL 9.5, MIX "C", N70" SPECIAL PROVISION.
  - SEE ENTRANCE AND SIDE ROADS SCHEDULE ON SCHEDULE OF QUANTITIES PLAN SHEET FOR FINAL DISTANCES AND TEMPORARY RAMP QUANTITIES AND DIMENSIONS.
  - BITUMINOUS MATERIALS (PRIME COAT) SHALL BE APPLIED ON ALL EXISTING AGGREGATE SURFACES THAT WILL HAVE HOT-MIX ASPHALT OVERLAY. BITUMINOUS MATERIALS (TACK COAT) SHALL BE APPLIED ON ALL MILLED OIL & CHIP, HMA, OR CONCRETE SURFACES THAT WILL HAVE HOT-MIX ASPHALT OVERLAY.
  - PLACE AGGREGATE SURFACE COURSE, TYPE B IMMEDIATELY AFTER EACH LIFT OF H.M.A. TO PROVIDE AGGREGATE ACCESS RAMP FOR ENTRANCES. THE DEPTH SHALL BE THE H.M.A. THICKNESS OF THE RESPECTIVE LIFT FEATHERED TO ZERO DEPTH AT A MAXIMUM RATE OF 1V:40H. THE MINIMUM LENGTH "L" OF AGGREGATE RAMPS SHALL BE AS FOLLOWS:  
 AGGREGATE PLACEMENT AFTER: STA. 0+00 TO 103+50  
 HMA SURFACE COURSE 8 FT



**CHARLESTON ENGINEERING, INC.**  
 CONSULTING ENGINEERS - LAND SURVEYORS  
 105 NORTH KITCHELL AVENUE OLNEY, ILLINOIS 62450  
 P.O. BOX 397 (618) 392-0736  
 ILLINOIS DEPARTMENT OF PROFESSIONAL REGULATION REGISTRATION #184.003513

DESIGNED - BMB  
 DRAWN - BMB  
 CHECKED - BMB  
 DATE - 1-23-2024

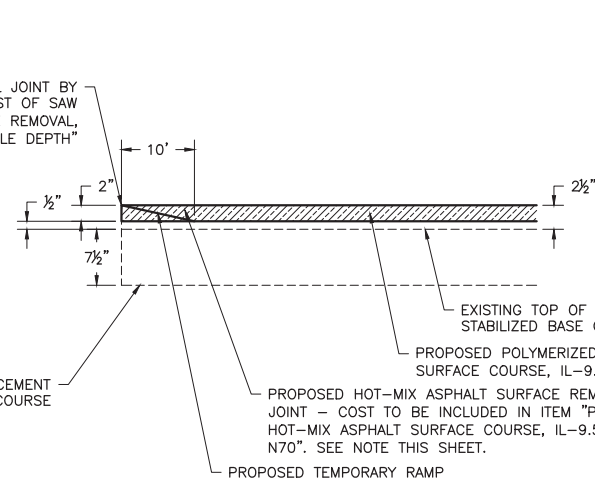
REVISED -  
 REVISED -  
 REVISED -  
 REVISED -

STATE OF ILLINOIS  
 DEPARTMENT OF TRANSPORTATION

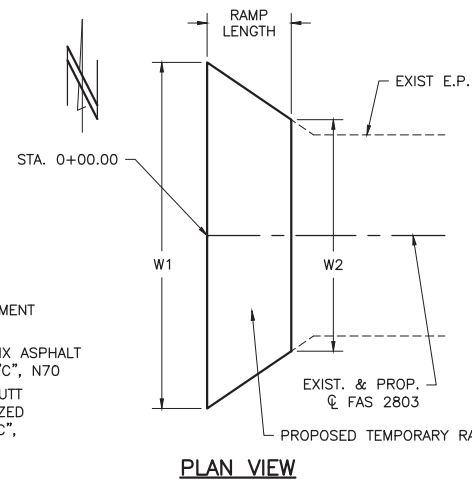
ENTRANCE DETAILS

ROUTE	SECTION	COUNTY	TOTAL SHEETS	SHEET NO.
FAS 2803	21-00129-00-FP	RICHLAND	23	21
CONTRACT 95949		ILLINOIS	XDPC(892)	

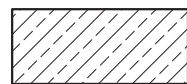
STA. 0+00.00 - OBTAIN VERTICAL JOINT BY SAW-CUTTING EXISTING PAVEMENT. COST OF SAW CUT INCLUDED IN ITEM "SURFACE REMOVAL, VARIABLE DEPTH"



SECTION VIEW



PLAN VIEW



HATCH LEGEND

PROPOSED SURFACE REMOVAL, VARIABLE DEPTH - SEE NOTE THIS SHEET

TEMPORARY RAMP  
AFTER 2" BUTT JOINT REMOVAL

RAMP LENGTH(FT)	W1(FT)	W2(FT)	SQ_YD
10	176	86	146

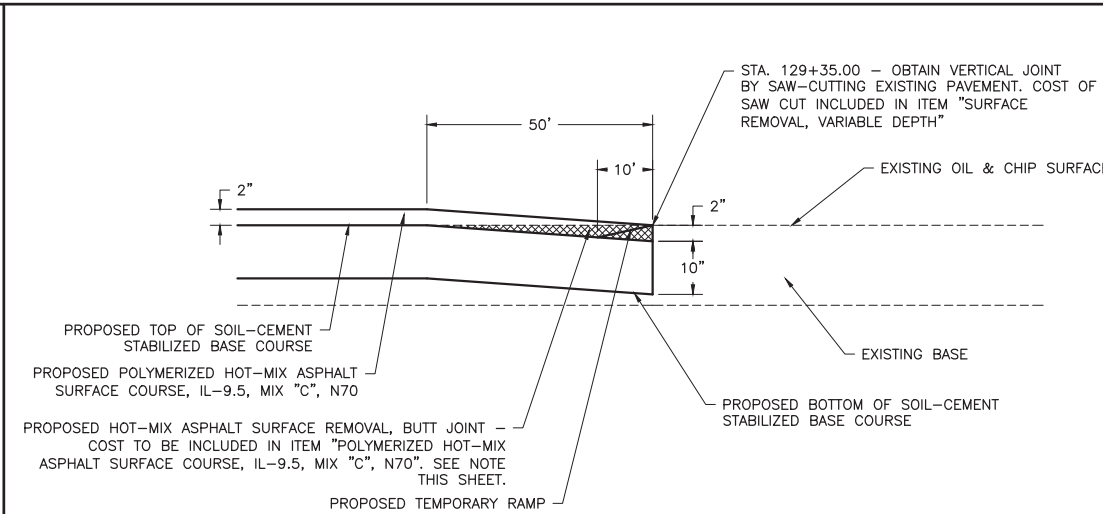
NOTE

ALL PROPOSED HOT-MIX ASPHALT SURFACE REMOVAL, BUTT JOINT SHALL BE INCIDENTAL TO ITEM "POLYMERIZED HOT-MIX ASPHALT SURFACE COURSE, IL-9.5, MIX "C", N70".

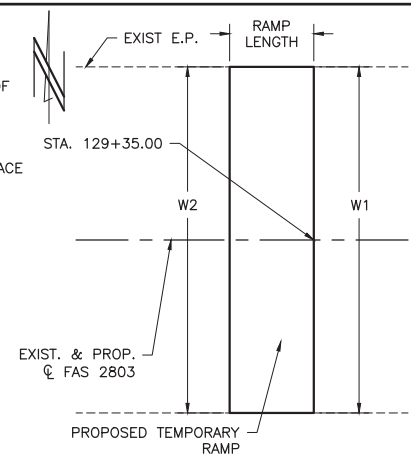
BUTT JOINT DETAIL

STA. 0+00.00  
NOT TO SCALE

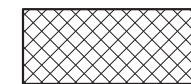
STA. 129+35.00 - OBTAIN VERTICAL JOINT BY SAW-CUTTING EXISTING PAVEMENT. COST OF SAW CUT INCLUDED IN ITEM "SURFACE REMOVAL, VARIABLE DEPTH"



SECTION VIEW



PLAN VIEW



HATCH LEGEND

PROPOSED HOT-MIX ASPHALT SURFACE REMOVAL, BUTT JOINT - SEE NOTE THIS SHEET

TEMPORARY RAMP  
AFTER 2" BUTT JOINT REMOVAL

RAMP LENGTH(FT)	W1(FT)	W2(FT)	SQ_YD
10	20	20	23

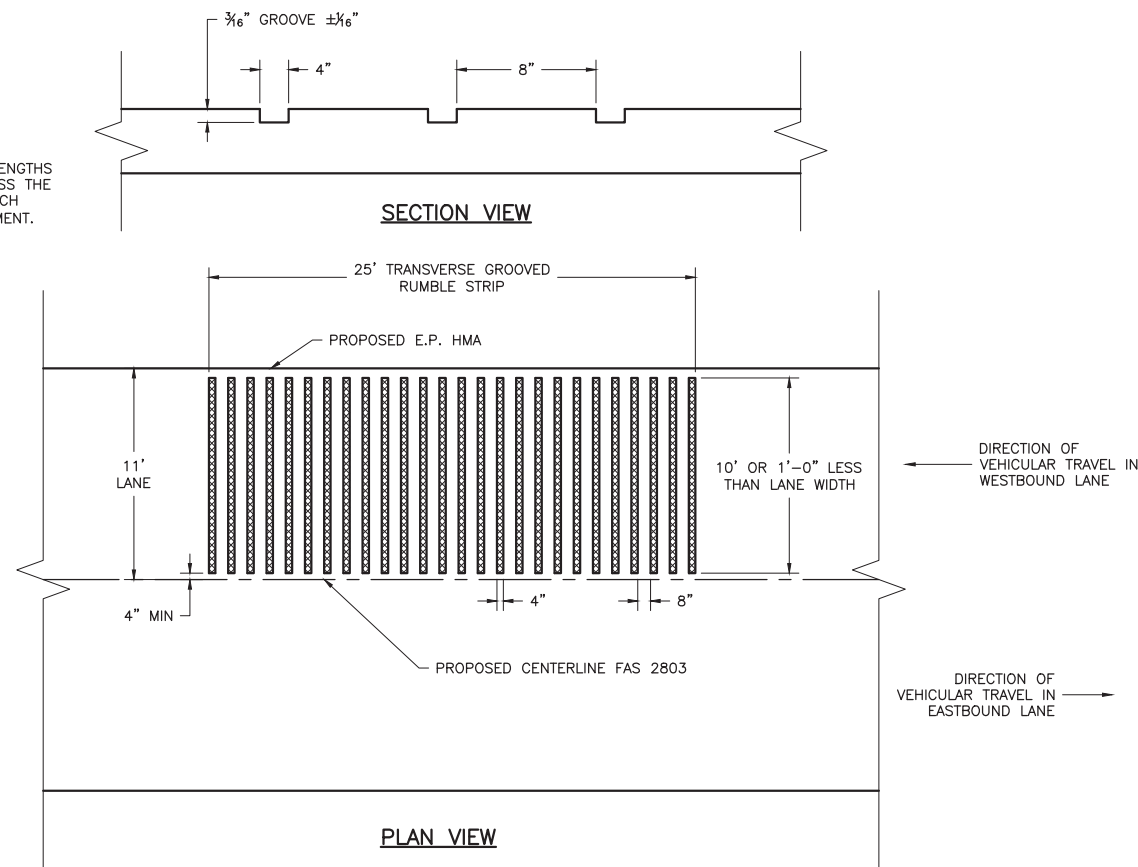
NOTE

ALL PROPOSED HOT-MIX ASPHALT SURFACE REMOVAL, BUTT JOINT SHALL BE INCIDENTAL TO ITEM "POLYMERIZED HOT-MIX ASPHALT SURFACE COURSE, IL-9.5, MIX "C", N70".

BUTT JOINT DETAIL

STA. 129+35.00  
NOT TO SCALE

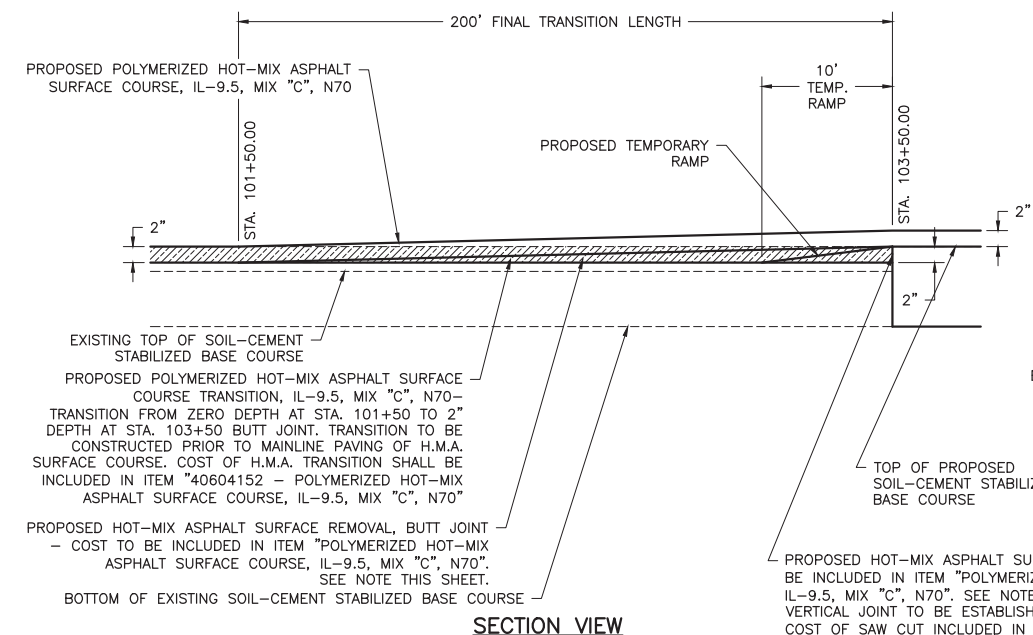
NOTE: THE 25' RUMBLE AREA HAS 8" LENGTHS OF TREATED SURFACE STRETCHED ACROSS THE WIDTH OF THE APPROACH LANE, EACH SEPARATED BY 8" OF EXISTING PAVEMENT.



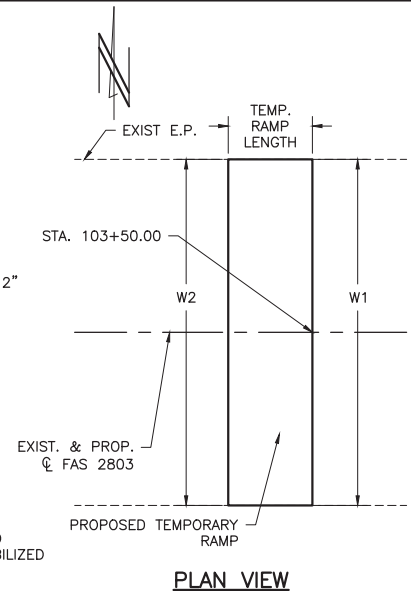
SECTION VIEW

PLAN VIEW

RUMBLE STRIP DETAIL (GROOVED)  
NOT TO SCALE



SECTION VIEW



PLAN VIEW

PROPOSED HOT-MIX ASPHALT SURFACE REMOVAL, BUTT JOINT - COST TO BE INCLUDED IN ITEM "POLYMERIZED HOT-MIX ASPHALT SURFACE COURSE, IL-9.5, MIX "C", N70". SEE NOTE THIS SHEET. VERTICAL JOINT TO BE ESTABLISHED BY SAW-CUTTING EXISTING PAVEMENT. COST OF SAW CUT INCLUDED IN ITEM "SURFACE REMOVAL, VARIABLE DEPTH"

TEMPORARY RAMP  
AFTER 2" BUTT JOINT REMOVAL

RAMP LENGTH(FT)	W1(FT)	W2(FT)	SQ_YD
10	22	22	25

HATCH LEGEND



PROPOSED SURFACE REMOVAL, VARIABLE DEPTH - SEE NOTE THIS SHEET

NOTE

ALL PROPOSED HOT-MIX ASPHALT SURFACE REMOVAL, BUTT JOINT SHALL BE INCIDENTAL TO ITEM "POLYMERIZED HOT-MIX ASPHALT SURFACE COURSE, IL-9.5, MIX "C", N70".

H.M.A. TRANSITION AND BUTT JOINT DETAIL

STA. 103+50.00  
NOT TO SCALE

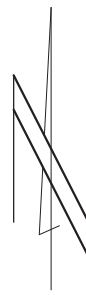
CHARLESTON ENGINEERING, INC.  
CONSULTING ENGINEERS - LAND SURVEYORS  
105 NORTH KITCHELL AVENUE OLNEY, ILLINOIS 62450  
P.O. BOX 397 (618) 392-0736  
ILLINOIS DEPARTMENT OF PROFESSIONAL REGULATION REGISTRATION #184.003513

DESIGNED - BMB	REVISED -
DRAWN - BMB	REVISED -
CHECKED - BMB	REVISED -
DATE - 1-23-2024	REVISED -

STATE OF ILLINOIS  
DEPARTMENT OF TRANSPORTATION

MISCELLANEOUS DETAILS

ROUTE	SECTION	COUNTY	TOTAL SHEETS	SHEET NO.
FAS 2803	21-00129-00-FP	RICHLAND	23	22
CONTRACT 95949		ILLINOIS	XDPC(892)	



SCALE:  
N.T.S.

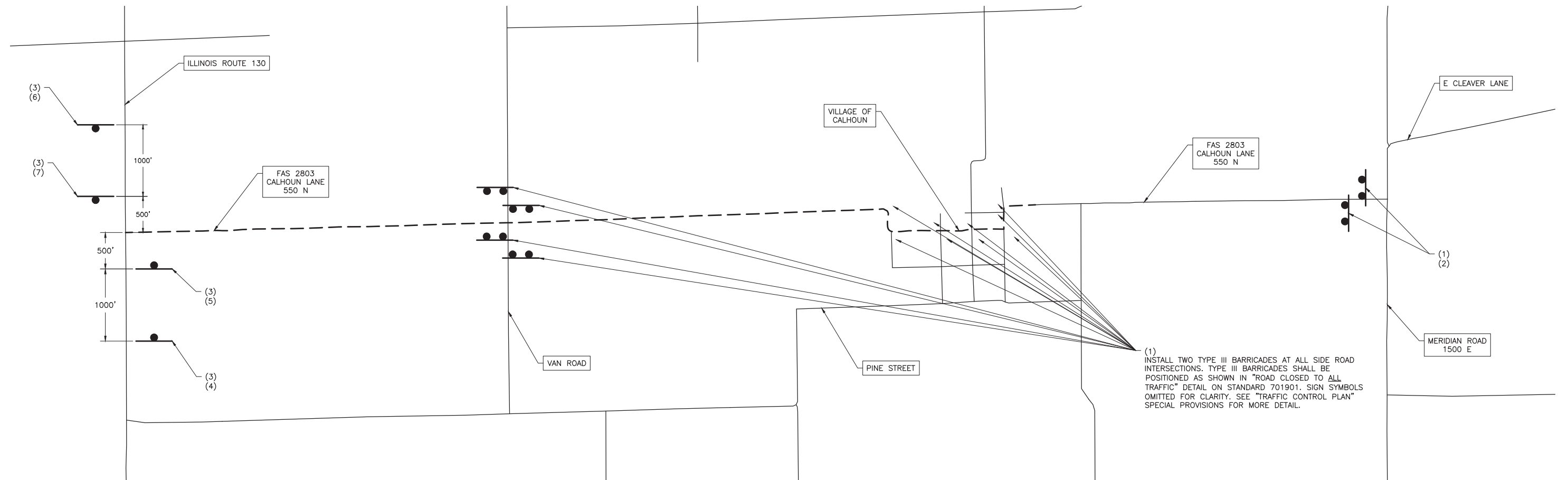
**LEGEND**

- ROAD CLOSED TO ALL TRAFFIC DURING CONSTRUCTION HOURS (BLR 21)
- ROAD CLOSED TO THRU TRAFFIC OUTSIDE CONSTRUCTION HOURS (BLR 22)
- ( ) MULTIPLE TRAFFIC CONTROL SIGNS - NUMBER DENOTES TYPE
- ( ) SEE TRAFFIC CONTROL SIGN LEGEND THIS SHEET
- ( ) SINGLE TRAFFIC CONTROL SIGN, NUMBER DENOTES TYPE
- TYPE III BARRICADE W/ AMBER FLASHING LIGHTS
- TRAFFIC CONTROL SIGN - SINGLE POST MOUNTED

TRAFFIC CONTROL SIGN LEGEND							
SIGN NUMBER	SIGN DESCRIPTION	SIGN DESIGNATION	SIGN SIZE	SIGN BACKGROUND COLOR	SIGN LETTERING COLOR	AMBER FLASHER	18" X 18" ORANGE FLAG
1	ROAD CLOSED	R11-2	48" X 30"	WHITE	BLACK	2	0
2	1 MILE AHEAD	W12-1101	24" X 18"	WHITE	BLACK	0	0
3	ROAD CLOSED AHEAD	W20-3	36" X 36"	ORANGE	BLACK	1	1
4	ADVANCE TURN ARROW (RIGHT)	M5-1 R	21" X 15"	ORANGE	BLACK	0	0
5	DIRECTIONAL ARROW (RIGHT)	M6-1	21" X 15"	ORANGE	BLACK	0	0
6	ADVANCE TURN ARROW (LEFT)	M5-1 L	21" X 15"	ORANGE	BLACK	0	0
7	DIRECTIONAL ARROW (LEFT)	M6-1	21" X 15"	ORANGE	BLACK	0	0

**NOTES:**

1. SEE SPECIAL PROVISIONS FOR ADDITIONAL TRAFFIC CONTROL SIGNING DETAILS.
2. SEE SPECIAL PROVISIONS AND STANDARD BLR 21 AND BLR 22 FOR ADDITIONAL SIGNS REQUIRED BY THE TRAFFIC CONTROL PLAN. BLR 21 AND BLR 22 TRAFFIC CONTROL DEVICES NOT SHOWN ON THIS SHEET FOR CLARITY PURPOSES.
3. THE ENGINEER WILL FIELD STAKE THE LOCATIONS OF ANY SIGNS IF REQUESTED BY THE CONTRACTOR IN WRITING AT LEAST THREE WEEKS PRIOR TO THE INSTALLATION OF TRAFFIC CONTROL SIGNING.
4. LONGITUDINAL DIMENSIONS SHOWN MAY BE ADJUSTED IN THE FIELD TO FIT EXISTING CONDITIONS.
5. THE FOLLOWING ILLINOIS DEPARTMENT OF TRANSPORTATION STANDARDS ARE APPLICABLE FOR THIS WORK:
  - 5.A. STANDARD 701001
  - 5.B. STANDARD 701006
  - 5.C. STANDARD 701011
  - 5.D. STANDARD 701201
  - 5.E. STANDARD 701301
  - 5.F. STANDARD 701306
  - 5.G. STANDARD 701901
  - 5.H. BLR 21
  - 5.I. BLR 22



(1) INSTALL TWO TYPE III BARRICADES AT ALL SIDE ROAD INTERSECTIONS. TYPE III BARRICADES SHALL BE POSITIONED AS SHOWN IN "ROAD CLOSED TO ALL TRAFFIC" DETAIL ON STANDARD 701901. SIGN SYMBOLS OMITTED FOR CLARITY. SEE "TRAFFIC CONTROL PLAN" SPECIAL PROVISIONS FOR MORE DETAIL.