

04-26-2024 LETTING ITEM 167

INDEX OF SHEETS

SHEET NO.	DESCRIPTION
1	COVER SHEET
2	TYPICAL CROSS SECTIONS AND DETAILS
3	DETAILS & PAVEMENT DESIGN DATA

STANDARDS

00001-08	STANDARD SYMBOLS ABBREVIATIONS AND PATTERNS
701301-04	LANE CLOSURE 2L2W - SHORT TIME OPERATION
701306-04	LANE CLOSURE 2L2W SLOW MOVING OP ON DAY ONLY +45 MPH
701901-09	TRAFFIC CONTROL DEVICES

THE ACCEPTANCE OF THIS PROJECT IS BASED ON THE MINIMUM DESIGN CRITERIA FOR LOCAL AGENCY FUNCTIONAL OVERLAY POLICY (LAFO) PROJECTS

CLASS III ROAD
CURRENT A.D.T. = 475 2023
DESIGN A.D.T. = 500 2028
DESIGN SPEED = 50 M.P.H.
Functional Class = Collector

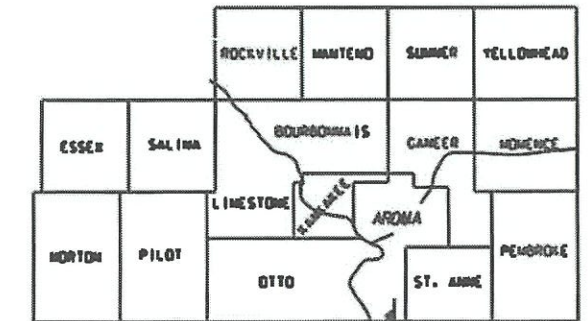
Construction Code 1000

CONTRACT NO.87829

J.U.L.I.E. 1-800-892-0123

STATE OF ILLINOIS
DEPARTMENT OF TRANSPORTATION
PLANS FOR PROPOSED
FEDERAL AID HIGHWAY
SURFACE TRANSPORTATION PROGRAM
FAS 1320 (CH3)
SECTION 19-00068-03-RS
PROJECT 000R(893)
KANKAKEE COUNTY
C-93-016-24

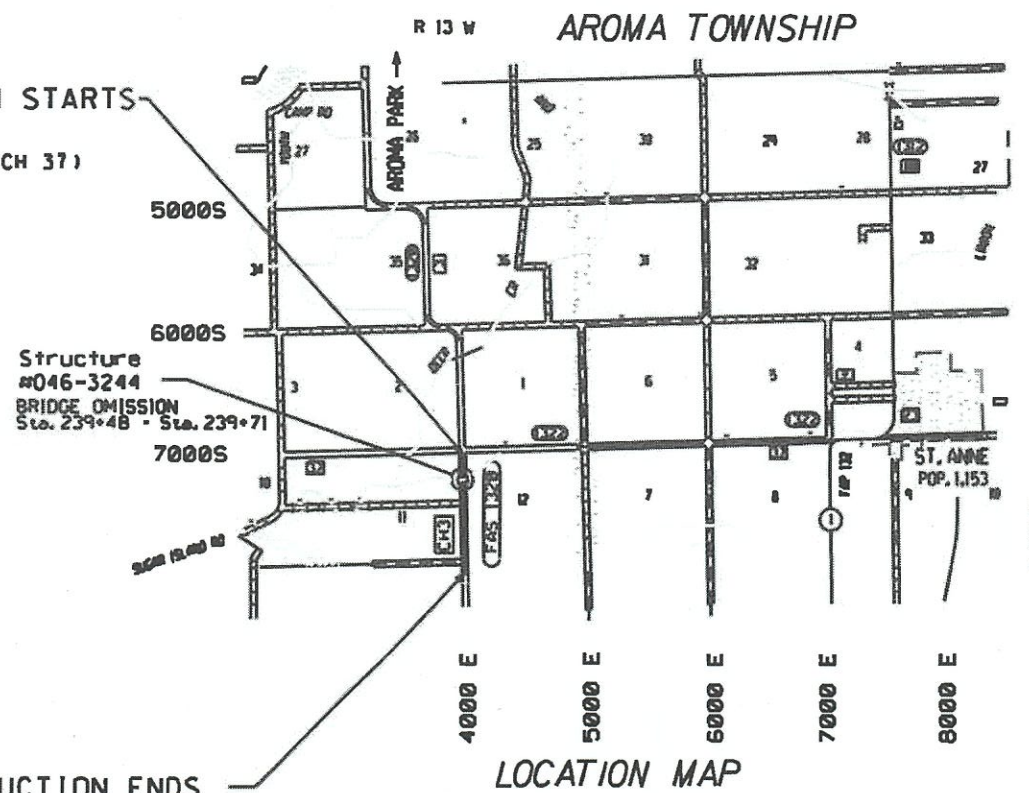
F.A.S. ROUTE NO.	SEC.	COUNTY	NO. SHEETS	SHEET NO.
1320	#	Kankakee	4	1
ILLINOIS PROJECT			Contract No. 87829	
# 19-00068-03-RS			KANKAKEE COUNTY	



PROJECT LOCATION

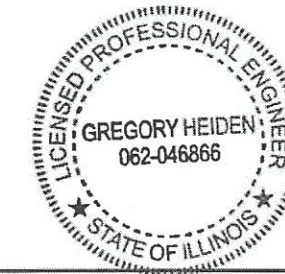


CONSTRUCTION STARTS
STA 221+86
(S. EOP FAS 1322 CH 37)



CONSTRUCTION ENDS
STA. 275+62
(South Kankakee County Line)

NET LENGTH = 5376 LIN FT = 1.02 MILES



STATE OF ILLINOIS
DEPARTMENT OF TRANSPORTATION
DIVISION OF HIGHWAYS

Submitted 2/15 2024
Greg Heiden
Greg Heiden, P.E.
County Engineer

Passed 2/21 2024
Steve Chery
Steve Chery, PE
Bureau Chief, Local Roads & Streets

Approved 2/21 2024
Stephen Travia
Stephen Travia
Region 2 Engineer

SECTION	COUNTY	TOTAL SHEETS	SHEET NO.
19-00068-03-RS	KANKAKEE	4	2

Contract No. 87829

SUMMARY OF QUANTITIES

CODE NO.	Description	Quantity	Unit
40600370	LONGITUDINAL JOINT SEALANT	5353	FOOT
40600982	HOT-MIX ASPHALT SURFACE REMOVAL-BUTT JOINT	590	SO YD
40600990	TEMPORARY RAMP	55	SO YD
40602965	HOT-MIX ASPHALT BINDER COURSE, IL-9.5FG, N50	807	TON
40604050	HOT-MIX ASPHALT SURFACE COURSE, IL-9.5,"MIX C", N50	1009	TON
40800029	BITUMINOUS MATERIALS (TACK COAT)	7910	POUNDS
40800050	INCIDENTAL HOT-MIX ASPHALT SURFACING	65	TON
48101200	AGGREGATE SHOULDERS, TY B	732	TON
67100100	MOBILIZATION	1	L SUM
70100460	TRAFFIC CONTROL AND PROTECTION, STND 701306-04	1	L SUM
70300100	SHORT TERM PAVEMENT MARKING	2101	FOOT
Z0034105	MATERIAL TRANSFER DEVICE	1816	TON

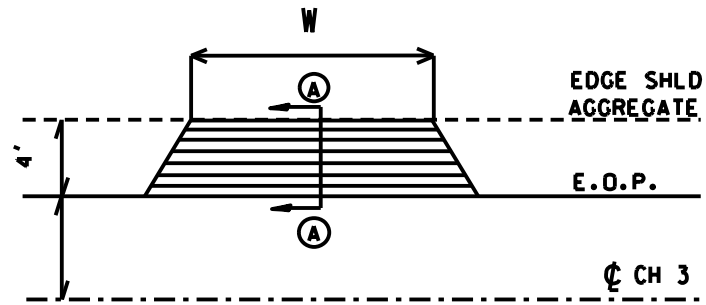
HMA MIXTURE REQUIREMENT TABLE

	Entire Project	Entire Project	Entire Project
LOCATION:	Entire Project	Entire Project	Entire Project
MIX USE:	HMA Binder	HMA Surface	HMA Incidental
BINDER GRADE:	PG 64-22	PG 64-22	PG 64-22
DESIGN AIR VOIDS:	4.0% N50	4.0% N50	4.0% N50
MIX COMPENSATION:	IL 9.5FG	IL 9.5	IL 9.5
FRICTION AGGREGATE:	NA	Mix C	NA
MIXTURE WEIGHT:	112.0 LB/SY/IN	112.0 LB/SY/IN	112.0 LB/SY/IN
QUALITY MANAGEMENT:	QC/QA	QC/QA	QC/QA
PROGRAM			
SUBLOT SIZE:	N/A	N/A	N/A
DENSITY TEST METHOD:	CORE/NUCLEAR	CORE/NUCLEAR	CORE/NUCLEAR
MAT. TRANSFER DEVICE (REQUIRED)	YES	YES	NO

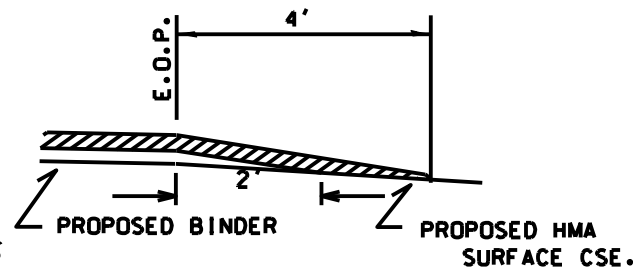
PERMANENT PAVEMENT MARKINGS TO BE PLACED BY COUNTY FORCES

TYPICAL ENTRANCE DETAIL

W : WIDTH OF APPROACH PADS IS ESTIMATED AT 20' PER ENTRANCE .
THE ACTUAL CONSTRUCTED WIDTH MAY VARY AS DIRECTED BY THE
ENGINEER TO FIT THE EXISTING ENTRANCES .



SECTION A-A



ESTIMATED QUANTITIES-4 ENTRANCES		
ITEM	UNIT	QUANTITY
BITUMINOUS MATERIALS (PRIME COAT)	LBS	23
HMA Binder Crse.. IL -9.5FG.N50	TON	3
HMA Surface Crse.. IL -9.5. "Mix C". N50	TON	6

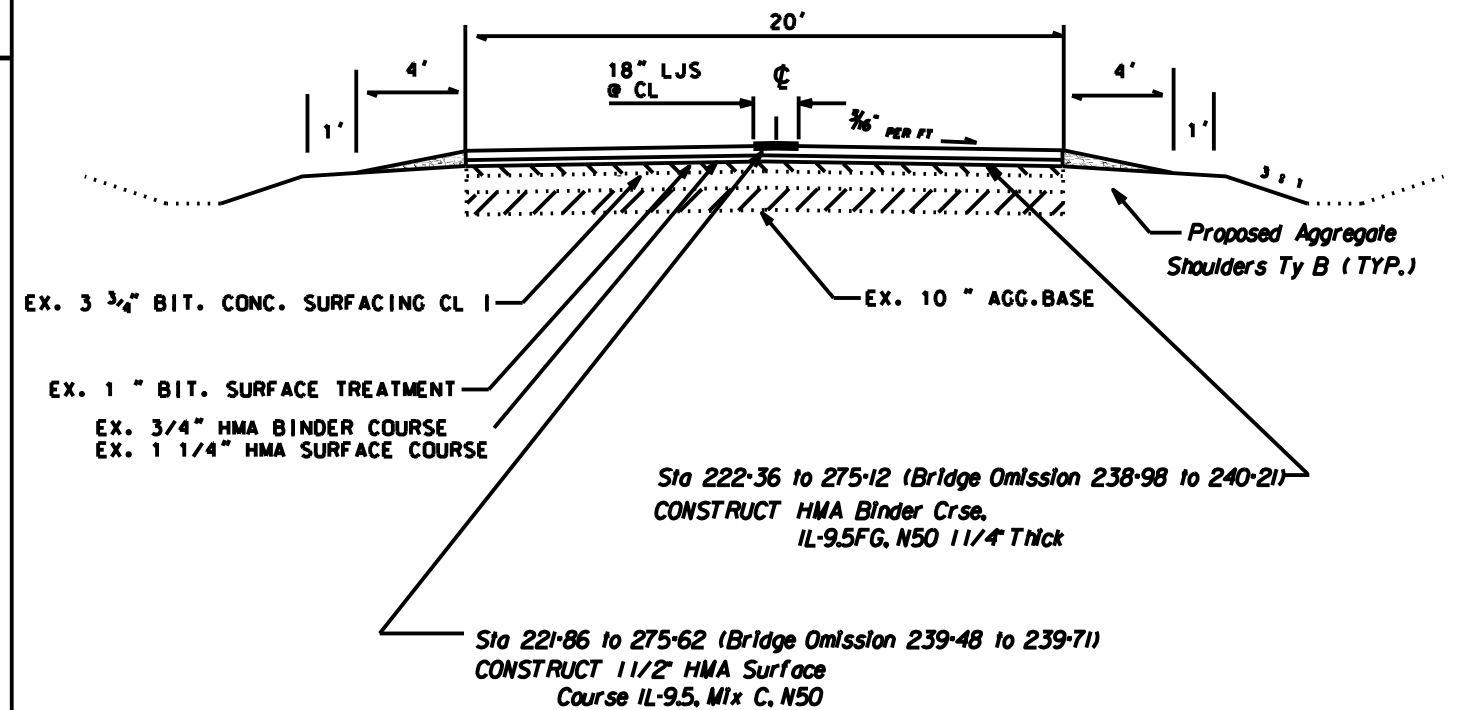
DRIVEWAYS TO BE PLACED DURING MAINLINE PAVING OPERATIONS

SECTION	COUNTY	TOTAL SHEETS	SHEET NO.
19-00068-03-RS	KANKAKEE	4	3

Contract No. 87829

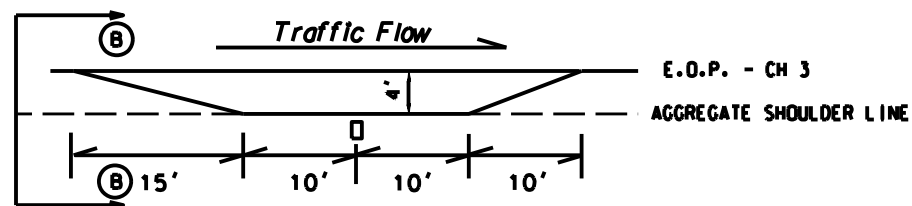
TYPICAL CROSS SECTION

STA. 221+86 To 275+62



PERMANENT PAVEMENT MARKINGS TO BE PLACED BY COUNTY FORCES

TYPICAL MAILBOX TURNOUT RESURFACING DETAIL



MAILBOX TURNOUT SCHEDULE			
STATION	SIDE	STATION	SIDE
243+84	RT	263+80	RT

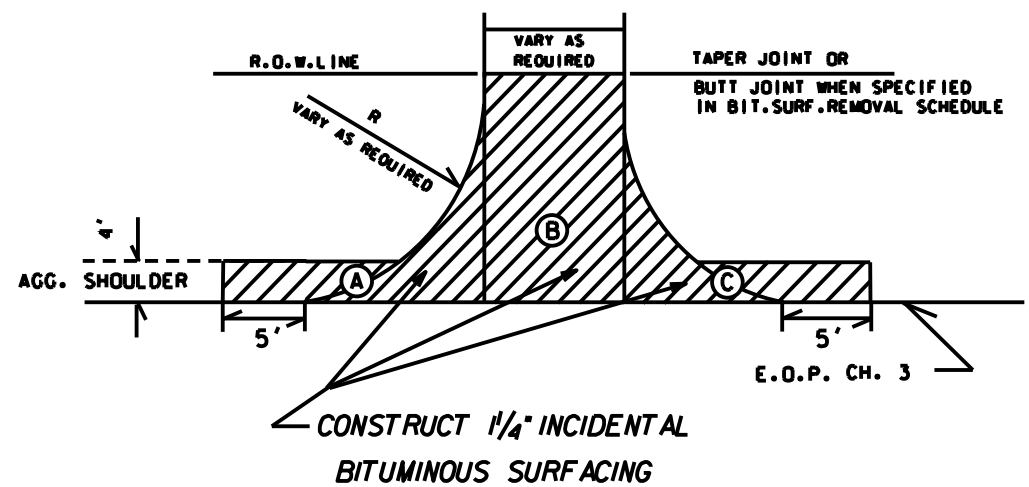
ESTIMATED QUANTITIES - 2 MAILBOX TURNOUTS		
ITEM	UNIT	QUANTITY
BIT.MATERIALS (PRIME COAT)	LBS	18
HMA Binder Crse.. IL -9.5FG. N50	TON	2
HMA Surface Crse.. IL -9.5. "Mix C". N50	TON	4

DRIVEWAYS TO BE PLACED DURING MAINLINE PAVING OPERATIONS

SECTION	COUNTY	TOTAL SHEETS	SHEET NO.
19-00068-03-RS	KANKAKEE	4	4

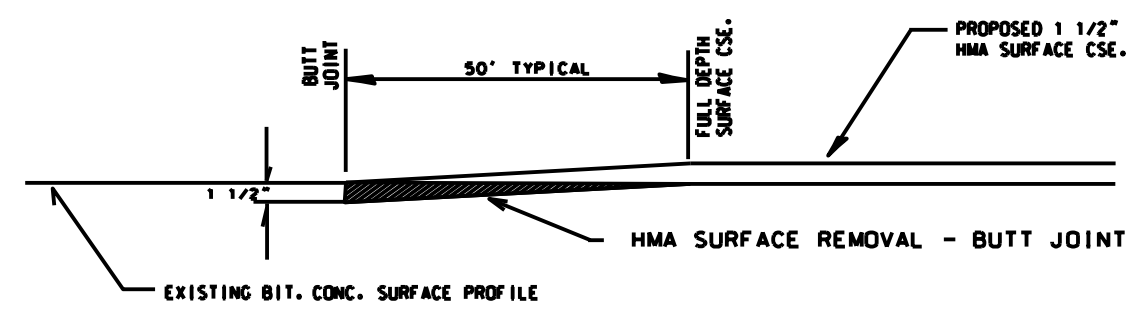
Contract No. 87829

INTERSECTION DETAIL



STATION	AREA	SIDE	WIDTH	RADIUS	INCIDENTAL BIT. SURFACING (TON)	BIT. MATRLS. (PRIME COAT) (LBS)	LOCATION
221+86	A+C	Mainline		40(A) 40(C)	25	10	4000E
248+36	A+B+C	RT	18 (B)	30(A) 30(C)	20	10	7500S
275+62	A+B+C	RT	18 (B)	30(A) 30(C)	20	10	8000S
Total					65	30	

PAVEMENT REMOVAL-BUTT JOINT



STA TO STA	OPERATION	TEMPORARY RAMP (5' wide)
221+86 to 222+36 (Includes Radi)	190 Sq Yd Butt Jt	11 Sq Yd
238+98 to 239+48 (North Abut)	111 Sq Yd Butt Jt	11 Sq Yd
239+48 to 239+71 (Br. Deck)	- BRIDGE OMITTED -	
(South Abut) 239+71 to 240+21	111 Sq Yd Butt Jt	11 Sq Yd
248+36 7500 S	67 Sq Yd Butt Jt	11 Sq Yd
275+12 to 275+62	111 Sq Yd Butt Jt	11 Sq Yd
TOTALS	590 Sq Yd/Butt JT	55 Sq Yd

Pavement Design Data

Design Period = 10 Years
A.D.T. = 475 (2023) 500 (2033)
P.V. = 88 % = 440 S.U. = 7 % = 35 M.U. = 5 % = 25
T.F. = 0.08
DT = 2.79

PAVEMENT STRUCTURE NUMBER

Ex. 10" Agg. Base (Crushed).	10 X 0.10 = 1.00
Ex. 3 3/4" Bit. Class 1 Surfacing	3.75 X 0.21 = 0.79
Ex. 1" Bituminous Surf. Treatment	1 X 0.20 = 0.20
Ex. 3/4" Bit Conc. Surface N50	1 X 0.30 = 0.30
Ex. 1 1/4" Bit Conc. Surface N50	1.25 X 0.30 = 0.38
Prop. 1 1/4" HMA Binder Crse IL-9.5FG. N50	1.25 X 0.40 = 0.50
Prop. 1 1/2" HMA Surface Crse IL-9.5.Mix C. N50	1.50 X 0.40 = 0.60

Marshall Stability = 1700 3.77

BRIDGE DECK

- OMISSION -

