

STATE OF ILLINOIS
DEPARTMENT OF TRANSPORTATION

F.A.S. RTE.	SECTION	COUNTY	TOTAL SHEETS	SHEET NO.
1909	12SLP-1	JACKSON	37	01
		ILLINOIS	CONTRACT NO. 78825	

FOR INDEX OF SHEETS, SEE SHEET NO. 3
FOR SUMMARY OF QUANTITIES, SEE SHEET NO. 5-8

PROPOSED HIGHWAY PLANS

FAS 1909 ROUTE (IL 127)
SECTION 12SLP-1
STP - 34FV(000)
SLOPE REPAIR
JACKSON COUNTY

C-99-102-20

TRAFFIC DATA

	2021	2023	2033	2043
P V s	1,620	1,660	1,820	2,020
S U s	70	70	80	85
M U s	60	60	70	75
ADT	1,750	1,790	1,970	2,180

TOWNSHIPS

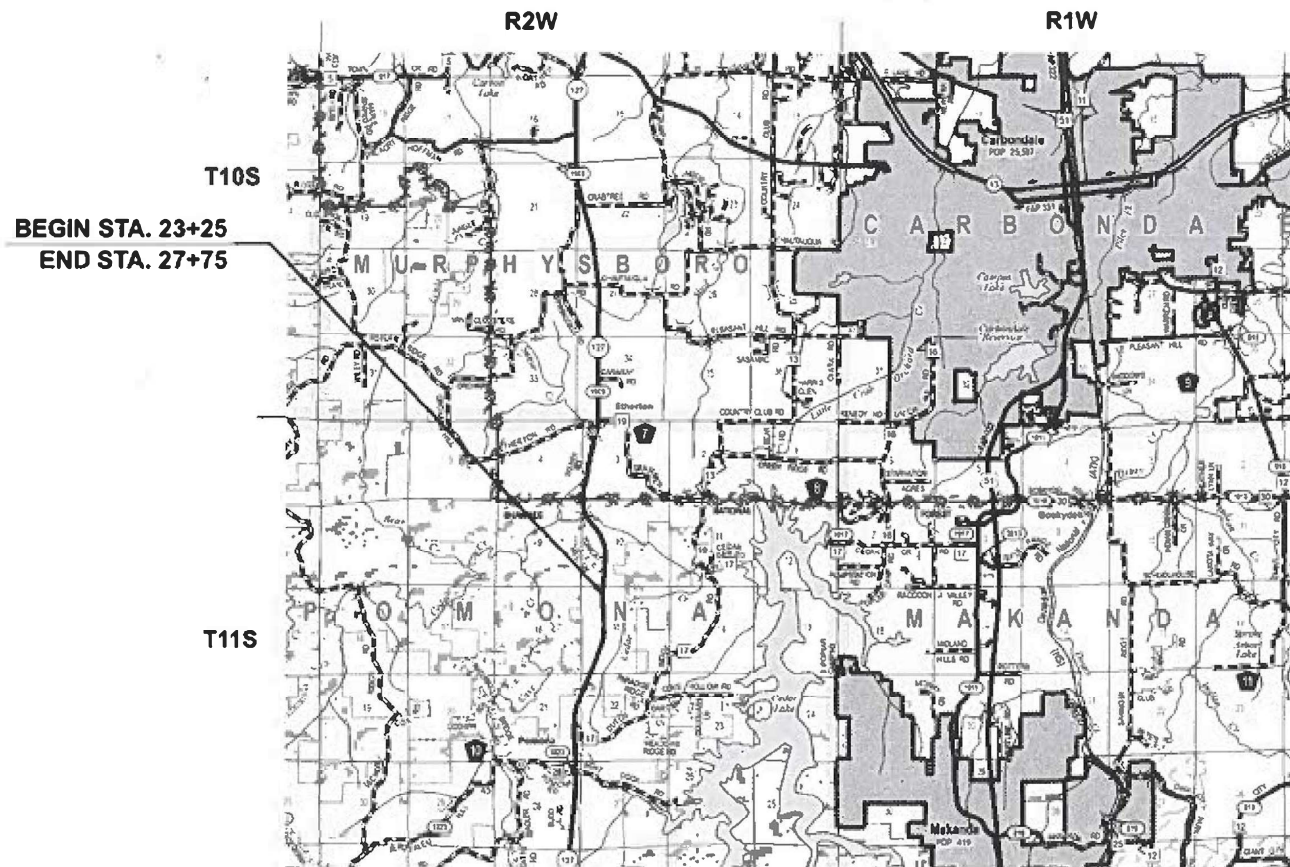
POMONA

POSTED SPEED : 55 MPH

J.U.L.I.E.
JOINT UTILITY LOCATION INFORMATION FOR EXCAVATION
1-800-892-0123
OR 811

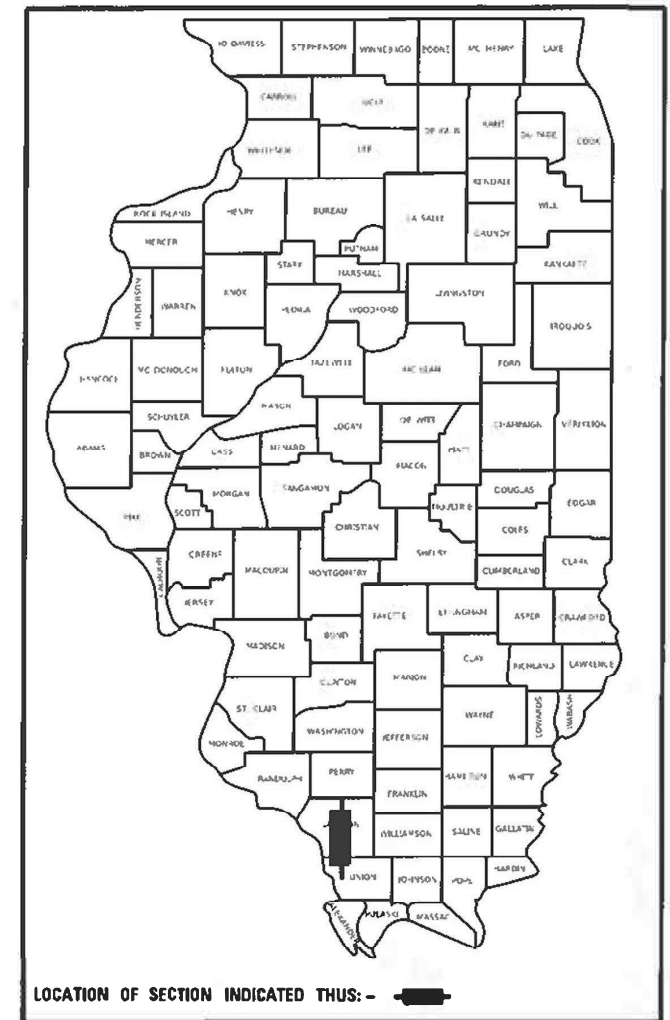
PROJECT ENGINEER: SEAN GREENLEE
PROJECT DESIGNER: DACODA BLOCKLEY

CONTRACT NO. 78825



GROSS LENGTH = 450 FT. = 0.09 MILES
NET LENGTH = 450 FT. = 0.09 MILES

D-99-079-20



LOCATION OF SECTION INDICATED THUS: - [black rectangle]

STATE OF ILLINOIS
DEPARTMENT OF TRANSPORTATION

SUBMITTED Jan 17 20 24

Kirk H. Brown
REGION FIVE ENGINEER

March 22, 2024
[Signature]
ENGINEER OF DESIGN AND ENVIRONMENT

March 22, 2024
[Signature]
DIRECTOR OF HIGHWAYS PROJECT IMPLEMENTATION

PRINTED BY THE AUTHORITY
OF THE STATE OF ILLINOIS

MODEL: Signatures Sheet (Sheet)
FILE NAME: \\p01data1\p01data1\p01data1\DOT\Documents\DOT\Contract\District 9\908E_111217\CAD\Drawings\908E\908E-5-Sub-Cover.dwg

Prepared By:

DISTRICT STUDIES & PLANS ENGINEER

Examined By:

Nancy Hee
DISTRICT LAND ACQUISITION ENGINEER

Examined By:

Caroline
DISTRICT PROGRAM DEVELOPMENT ENGINEER

Examined By:

R. C.
DISTRICT OPERATIONS ENGINEER

Examined By:

David J. ...
DISTRICT PROJECT IMPLEMENTATION ENGINEER

Examined By:

David J. ...
DISTRICT CONSTRUCTION ENGINEER

Examined By:

Ann Wang
DISTRICT MATERIALS ENGINEER

USER NAME = Oacoda .Rock ley
PLOT SCALE = 0.16666633' / in.
PLOT DATE = 1/16/2024

DESIGNED -
DRAWN -
CHECKED -
DATE -

REVISED -
REVISED -
REVISED -
REVISED -

STATE OF ILLINOIS
DEPARTMENT OF TRANSPORTATION

SIGNATURE SHEET

SCALE: SHEET 2 OF 37 SHEETS STA. TO STA.

F.A.S. RTE.	SECTION	COUNTY	TOTAL SHEETS	SHEET NO.
1909	125LP-1	JACKSON	37	02
ILLINOIS FED. AID PROJECT				

CONTRACT NO. 78825

HMA MIXTURE REQUIREMENTS TABLES

The following HMA mixture requirements are applicable for this project

Location(s):	Hot-Mix Asphalt Surface Course
Mixture Use(s):	Hot-Mix Asphalt Surface Course, Mix D, N70
PG:	PG64-22
Design Air Voids:	4.0 %, /0 Gyration Design
Mixture Composition: (Gradation Mixture)	IL-9.5mm
Friction Aggregate:	Mix D
Mixture Weight:	112 lbs/Sq Yd/in
Quality Management Program:	QC/QA
Sublot Size:	3,000 tons
Material Transfer Device	No

Location(s):	Hot Mix Asphalt Binder Course
Mixture Use(s):	Hot-Mix Asphalt Binder Course, IL-9.5FG, N70
PG:	PG64-22
Design Air Voids:	4.0 %, 70 Gyration Design
Mixture Composition: (Gradation Mixture)	IL-9.5mm Fine Graded
Friction Aggregate:	None
Mixture Weight:	112 lbs/Sq Yd/in
Quality Management Program:	QC/QA
Sublot Size:	3,000 tons
Material Transfer Device	No

MODEL: HMA.MXD (Sheet)
FILE NAME: P:\GIS\Projects\DOT\Office\District 9\ORD Project\78825\CAD\Drawings\DOT\8825-SurfBndr-GenNotes.dwg

USER NAME = Dacoda.Blackley	DESIGNED -	REVISED -
PLOT SCALE = 0.16666633' / in.	DRAWN -	REVISED -
PLOT DATE = 1/25/2024	CHECKED -	REVISED -
	DATE -	REVISED -

**STATE OF ILLINOIS
DEPARTMENT OF TRANSPORTATION**

HMA MIXTURE REQUIREMENTS

SCALE: SHEET 4 OF 37 SHEETS STA. TO STA.

F.A.S. RTE.	SECTION	COUNTY	TOTAL SHEETS	SHEET NO.
1909	12SLP-1	JACKSON	37	04
CONTRACT NO. 78825				
ILLINOIS FED. AID PROJECT				

SUMMARY OF QUANTITIES

JACKSON CO
FAS 1909
80% FEDERAL 20% STATE
RURAL
ROADWAY
0004

CODE NUMBER	ITEM DESCRIPTION	UNIT	
20100500	TREE REMOVAL ACRES	ACRE	1
20101400	NITROGEN FERTILIZER NUTRIENT	POUND	68
20101500	PHOSPHORUS FERTILIZER NUTRIENT	POUND	68
20101600	POTASSIUM FERTILIZER NUTRIENT	POUND	68
20200100	EARTH EXCAVATION	CU YD	3,291
20200200	ROCK EXCAVATION	CU YD	552
20201200	REMOVAL AND DISPOSAL OF UNSUITABLE MATERIAL	CU YD	970
20900110	POROUS GRANULAR BACKFILL	CU YD	14
25000200	SEEDING, CLASS 2	ACRE	0.75
25000350	SEEDING, CLASS 7	ACRE	0.75
25000700	AGRICULTURAL GROUND LIMESTONE	TON	2
25100115	MULCH, METHOD 2	ACRE	2
28000250	TEMPORARY EROSION CONTROL SEEDING	POUND	225
28000305	TEMPORARY DITCH CHECKS	FOOT	150

REV. - MS

MODEL: S00 (Sheet)
FILE NAME: p:\mids\new\entire\com\p\w\dot\document\DOT_Offices\District 9\CRD Projects\78825\CAD\Drawings\09\825-SHC-S00.dwg

USER NAME = Dacoda.Blockley PLOT SCALE = 0.16666633 1/ in. PLOT DATE = 1/25/2024	DESIGNED - DRAWN - CHECKED - DATE -	REVISED - REVISED - REVISED - REVISED -	STATE OF ILLINOIS DEPARTMENT OF TRANSPORTATION	SUMMARY OF QUANTITIES SCALE: SHEET 5 OF 37 SHEETS STA. TO STA.	<table border="1" style="width: 100%; text-align: center;"> <tr> <td>F.A.S. RTE.</td> <td>SECTION</td> <td>COUNTY</td> <td>TOTAL SHEETS</td> <td>SHEET NO.</td> </tr> <tr> <td>1909</td> <td>12SLP-1</td> <td>JACKSON</td> <td>37</td> <td>05</td> </tr> <tr> <td colspan="5">CONTRACT NO. 78825</td> </tr> <tr> <td colspan="5">ILLINOIS FED. AID PROJECT</td> </tr> </table>	F.A.S. RTE.	SECTION	COUNTY	TOTAL SHEETS	SHEET NO.	1909	12SLP-1	JACKSON	37	05	CONTRACT NO. 78825					ILLINOIS FED. AID PROJECT				
F.A.S. RTE.	SECTION	COUNTY	TOTAL SHEETS	SHEET NO.																					
1909	12SLP-1	JACKSON	37	05																					
CONTRACT NO. 78825																									
ILLINOIS FED. AID PROJECT																									

SUMMARY OF QUANTITIES - CONT

JACKSON CO
FAS 1909
80% FEDERAL 20% STATE
RURAL
ROADWAY
0004

CODE NUMBER	ITEM DESCRIPTION	UNIT	
28000400	PERIMETER EROSION BARRIER	FOOT	588
28100205	STONE RIPRAP, CLASS A3	TON	424
28200200	FILTER FABRIC	SQ YD	956
40600290	BITUMINOUS MATERIALS (TACK COAT)	POUND	360
40600370	LONGITUDINAL JOINT SEALANT	FOOT	400
40602970	HOT-MIX ASPHALT BINDER COURSE, IL-9.5FG, N70	TON	30
40604062	HOT-MIX ASPHALT SURFACE COURSE, IL-9.5, MIX "D", N70	TON	45
48102100	AGGREGATE WEDGE SHOULDER, TYPE B	TON	9
542A1069	PIPE CULVERTS, CLASS A, TYPE 2 24"	FOOT	41
54213669	PRECAST REINFORCED CONCRETE FLARED END SECTIONS 24"	EACH	1
54248510	CONCRETE COLLAR	CU YD	1
54390180	INSERTION CULVERT LINER 24"	FOOT	120
60100060	CONCRETE HEADWALLS FOR PIPE DRAINS	EACH	2
60108100	PIPE UNDERDRAINS 4" (SPECIAL)	FOOT	60

REV. - MS

MODEL: S002 (SHEET)
 FILE NAME: P:\Midwest\Inventory.com\PNW\DOT\Documents\DOT_Office\District 9\CRD Projects\78825\CAD\Drawings\091823-SHC-S00.dgn

USER NAME = Dacoda Blockley PLOT SCALE = 0.16666633 1/ in. PLOT DATE = 1/25/2024	DESIGNED - DRAWN - CHECKED - DATE -	REVISED - REVISED - REVISED - REVISED -	STATE OF ILLINOIS DEPARTMENT OF TRANSPORTATION	SUMMARY OF QUANTITIES	F.A.S. RTE. 1909	SECTION 125LP-1	COUNTY JACKSON	TOTAL SHEETS 37	SHEET NO. 06
SCALE: SHEET 6 OF 37 SHEETS STA. TO STA.					CONTRACT NO. 78825 ILLINOIS FED. AID PROJECT				

SUMMARY OF QUANTITIES - CONT

JACKSON CO
FAS 1909
80% FEDERAL 20% STATE
RURAL
ROADWAY
0004

CODE NUMBER	ITEM DESCRIPTION	UNIT	
60109640	BACKSLOPE DRAINS, TYPE 3 4"	FOOT	200
66700705	FURNISHING AND ERECTING DRAINAGE MARKERS	EACH	2
67100100	MOBILIZATION	L SUM	1
70100100	TRAFFIC CONTROL AND PROTECTION, STANDARD 701316	EACH	1
70100450	TRAFFIC CONTROL AND PROTECTION, STANDARD 701201	L SUM	1
70100460	TRAFFIC CONTROL AND PROTECTION, STANDARD 701306	L SUM	1
70106500	TEMPORARY BRIDGE TRAFFIC SIGNALS	EACH	1
70106700	TEMPORARY RUMBLE STRIPS	EACH	6
70107025	CHANGEABLE MESSAGE SIGN	CAL DA	28
70300100	SHORT TERM PAVEMENT MARKING	FOOT	120
70300150	SHORT TERM PAVEMENT MARKING REMOVAL	SQ FT	40
70300221	TEMPORARY PAVEMENT MARKING - LINE 4" PAINT	FOOT	900
* 78001110	PAINT PAVEMENT MARKING - LINE 4"	FOOT	900
78300201	PAVEMENT MARKING REMOVAL - GRINDING	SQ FT	300
* 86200300	UNINTERRUPTABLE POWER SUPPLY, EXTENDED	EACH	1

* SPECIALTY ITEM

REV. - MS

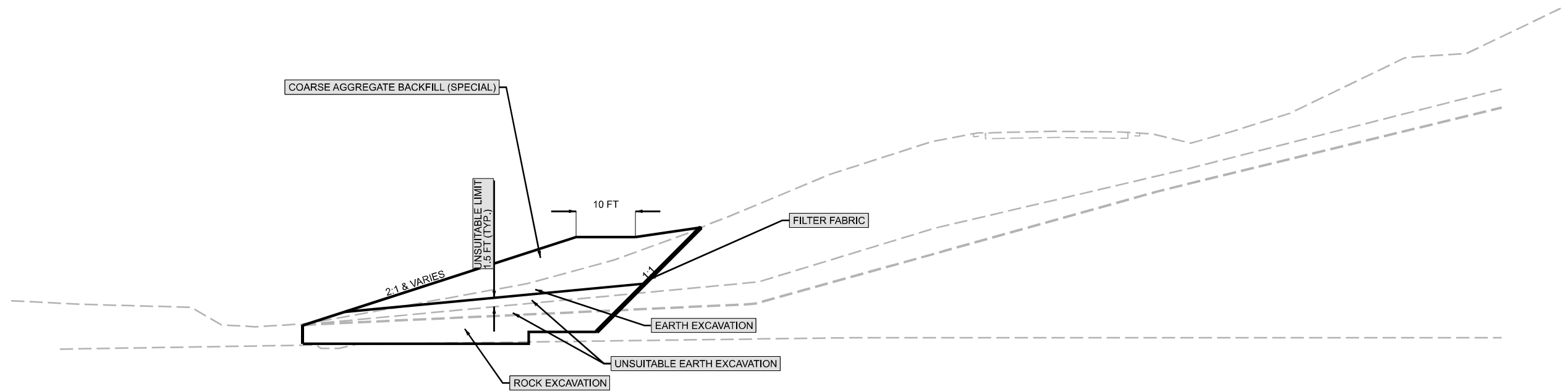
MODEL: S003 (5/14/14) FILE NAME: p:\midwest\mshenry.com\pww\DOT\Documents\DOT_Office\District 9\CRD Projects\78825\CAD\Drawings\78825-SHC-S03.dwg

USER NAME = Dacoda.Blockley PLOT SCALE = 0.16666633 1/ in. PLOT DATE = 1/25/2024	DESIGNED - DRAWN - CHECKED - DATE -	REVISED - REVISED - REVISED - REVISED -	STATE OF ILLINOIS DEPARTMENT OF TRANSPORTATION	SUMMARY OF QUANTITIES	SCALE: SHEET 7 OF 37 SHEETS STA. TO STA.	F.A.S. RTE. 1909 SECTION 125LP-1 COUNTY JACKSON TOTAL SHEETS 37 SHEET NO. 07 CONTRACT NO. 78825 ILLINOIS FED. AID PROJECT
--	--	--	---	------------------------------	--	---

TYPICAL SECTION

STA 24+00 TO STA 24+75

ROCK BUTTRESS



MODEL: Typical (Sheet)
 FILE NAME: p:\illinois\work\barley.com\PMIDOT\Documents\IDOT_Offices\District 9\PRD_Projects\78825\CADD\data\CAD\sheet\0978825-SUB-Typical.dgn

USER NAME = Dacoda.Blockley	DESIGNED -	REVISED -
	DRAWN -	REVISED -
PLOT SCALE = 0.16666633 1/ in.	CHECKED -	REVISED -
PLOT DATE = 1/25/2024	DATE -	REVISED -

STATE OF ILLINOIS
DEPARTMENT OF TRANSPORTATION

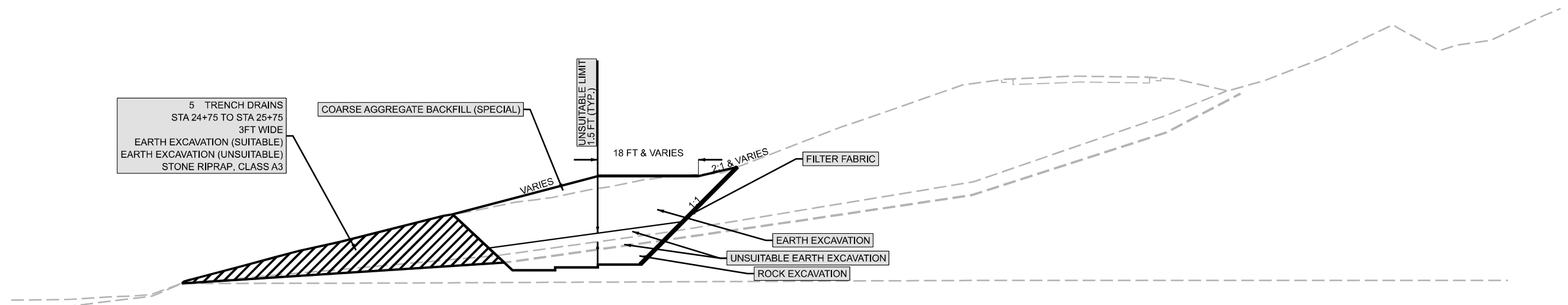
TYPICAL SECTION

SCALE: SHEET 9 OF 37 SHEETS STA. TO STA.

F.A.S. RTE. 1909	SECTION 12SLP-1	COUNTY JACKSON	TOTAL SHEETS 37	SHEET NO. 09
CONTRACT NO. 78825				
ILLINOIS FED. AID PROJECT				

TYPICAL SECTION

STA 24+75 STA 25+50
 STA 25+00 STA 25+75
 STA 25+25
 ROCK SHEAR KEY



MODEL: Typical (Sheet)
 FILE NAME: p:\illinois\projects\78825\CADD\data\CAD\sheet\09\980 Projects\78825\CADD\data\CAD\sheet\09\78825-SYD-Typical.dgn

USER NAME = Dacoda.Blockley	DESIGNED -	REVISED -
	DRAWN -	REVISED -
PLOT SCALE = 0.16666633 1/ in.	CHECKED -	REVISED -
PLOT DATE = 1/25/2024	DATE -	REVISED -

**STATE OF ILLINOIS
 DEPARTMENT OF TRANSPORTATION**

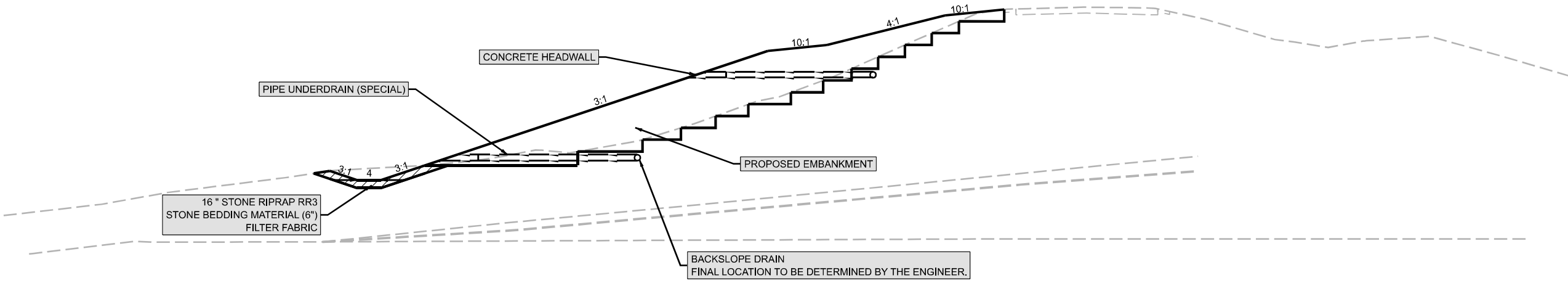
TYPICAL SECTION

SCALE: SHEET 10 OF 37 SHEETS STA. TO STA.

F.A.S. RTE.	SECTION	COUNTY	TOTAL SHEETS	SHEET NO.
1909	12SLP-1	JACKSON	37	10
CONTRACT NO. 78825				
ILLINOIS FED. AID PROJECT				

TYPICAL SECTION

STA 26+00 TO STA 27+75
EARTH EMBANKMENT



MODEL: Typical.dwg (Sheet)
 FILE NAME: p:\public\pawley\com\PMIDOT\Documents\IDOT_Offices\District 9\PRD_Projects\78825\CADD\Draws\CAD\Draws\0978825-SUB-Typical.dwg

USER NAME = Dacoda.Blockley	DESIGNED -	REVISED -
	DRAWN -	REVISED -
PLOT SCALE = 0.16666633 1/ in.	CHECKED -	REVISED -
PLOT DATE = 1/25/2024	DATE -	REVISED -

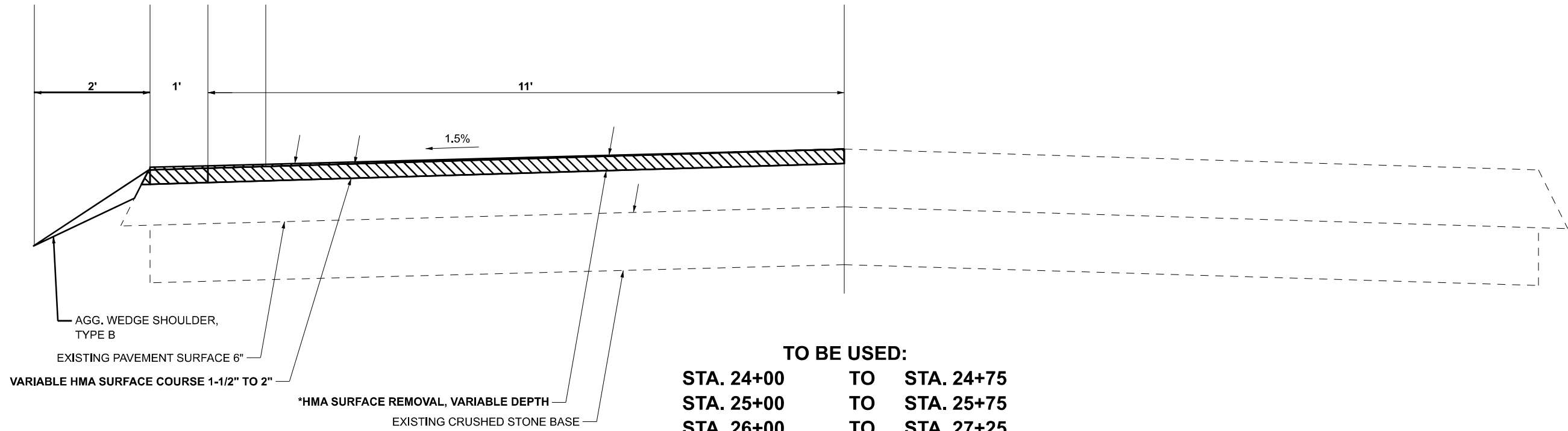
**STATE OF ILLINOIS
DEPARTMENT OF TRANSPORTATION**

TYPICAL SECTION			
SCALE:	SHEET 11	OF 37 SHEETS	STA. TO STA.

F.A.S. RTE.	SECTION	COUNTY	TOTAL SHEETS	SHEET NO.
1909	12SLP-1	JACKSON	37	11
CONTRACT NO. 78825				
ILLINOIS FED. AID PROJECT				

TYPICAL SECTION

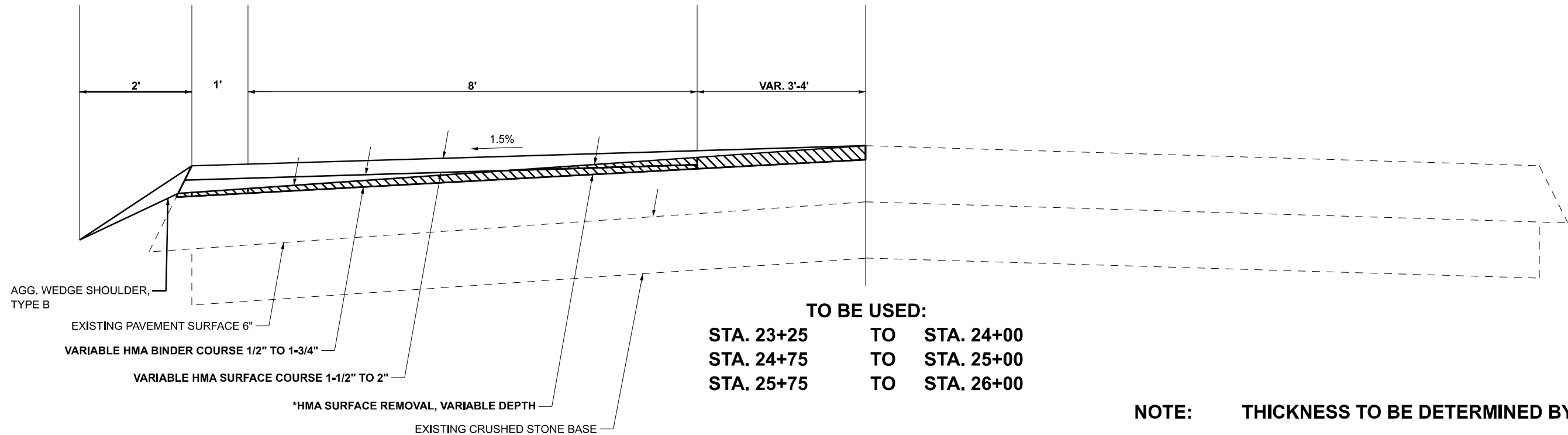
CL
IL 127



TO BE USED:
STA. 24+00 TO STA. 24+75
STA. 25+00 TO STA. 25+75
STA. 26+00 TO STA. 27+25

***HMA SURFACE REMOVAL, VARIABLE DEPTH SHALL INCLUDE ALL VARIABLE DEPTH SURFACE REMOVAL ON THE EXISTING UNCLASSIFIED PAVEMENT STRUCTURE.**

CL
IL 127



TO BE USED:
STA. 23+25 TO STA. 24+00
STA. 24+75 TO STA. 25+00
STA. 25+75 TO STA. 26+00

NOTE: THICKNESS TO BE DETERMINED BY THE ENGINEER

MODEL: Typical (Sheet) FILE NAME: P:\DOT\Documents\DOT Office\District 9\ORD Project\78825\CAD\Drawings\DOT\8825-SubD-Typical.dgn

USER NAME = Dacoda.Blackley	DESIGNED -	REVISED -
PLOT SCALE = 0.16666633' / in.	DRAWN -	REVISED -
PLOT DATE = 2/1/2024	CHECKED -	REVISED -
	DATE -	REVISED -

**STATE OF ILLINOIS
DEPARTMENT OF TRANSPORTATION**

TYPICAL SECTION

SCALE: SHEET 12 OF 37 SHEETS STA. TO STA.

F.A.S. RTE.	SECTION	COUNTY	TOTAL SHEETS	SHEET NO.
1909	12SLP-1	JACKSON	37	12
CONTRACT NO. 78825				
ILLINOIS FED. AID PROJECT				

SEEDING SCHEDULE

LOCATION	SEEDING	SEEDING	NITROGEN FERTILIZER NUTRIENTS	PHOSPHORUS FERTILIZER NUTRIENTS	POTASSIUM FERTILIZER NUTRIENTS	AGRICULTURAL GROUND LIMESTONE	TEMPORARY EROSION CONTROL SEEDING	MULCH METHOD 2	TEMPORARY DITCH CHECKS
	CLASS 2	CLASS 7	CLASS 2						
STATION TO STATION	ACRE	ACRE	POUND	POUND	POUND	TON	POUND	ACRE	FOOT
(FAS 1909) IL-127									
24+00 TO 27+75	0.75	0.75	68	68	68	2	225	1.5	150
IMPROVEMENT TOTALS:	0.75	0.75	68	68	68	2	225	1.5	150

PAVEMENT SCHEDULE

LOCATION STA TO STA	FOR INFORMATION ONLY		HOT-MIX ASPHALT SURFACE COURSE, MIX D, N70	HOT-MIX ASPHALT BINDER COURSE, N70, IL-9.5FG	HOT-MIX ASPHALT VARIABLE DEPTH REMOVAL	AGGREGATE WEDGE SHOULDER, TYPE B	BITUMUNOUS MATERIALS (TACK COAT)	LONGITUDINAL JOINT SEALANT	REMARKS
	LENGTH	LANE WIDTH							
	FOOT	FOOT	TON	TON	SQ YD	TON	POUND	FOOT	
JACKSON COUNTY									
STA 23+25. TO STA 27+25.	400	12	45	30	533	9	360	400	
SUB-TOTAL	400		45	30	533	9	360	400	

PAVEMENT MARKING SCHEDULE

ROADWAY	PAINT PAVEMENT MARKING				COMMENTS
	ROADWAY LENGTH	LINE - 4" WHITE	LINE - 4" YELLOW		
		SOLID	SOLID	SKIP - DASH	
FOOT	FOOT	FOOT	FOOT	FOOT	
STA 23+25.00 TO STA 27+25.00	400.0	400	400	100	
TOTAL		900			

TEMPORARY PAVEMENT MARKING SCHEDULE

LOCATION STATION TO STATION	ROADWAY LENGTH	TEMPORARY PAVEMENT MARKING			PAVEMENT MARKING REMOVAL GRINDING	SHORT TERM PAVEMENT MARKING	SHORT TERM PAVEMENT MARKING REMOVAL
		LINE - 4" WHITE	LINE - 4" YELLOW				
		SOLID	SOLID	SKIP - DASH			
FOOT	FOOT	FOOT	FOOT	SQ FT	FOOT	SQ FT	
STA 23+25.00 TO STA 27+25.00	400.0	800		100	300	120	40
TOTAL		900			300	120	40

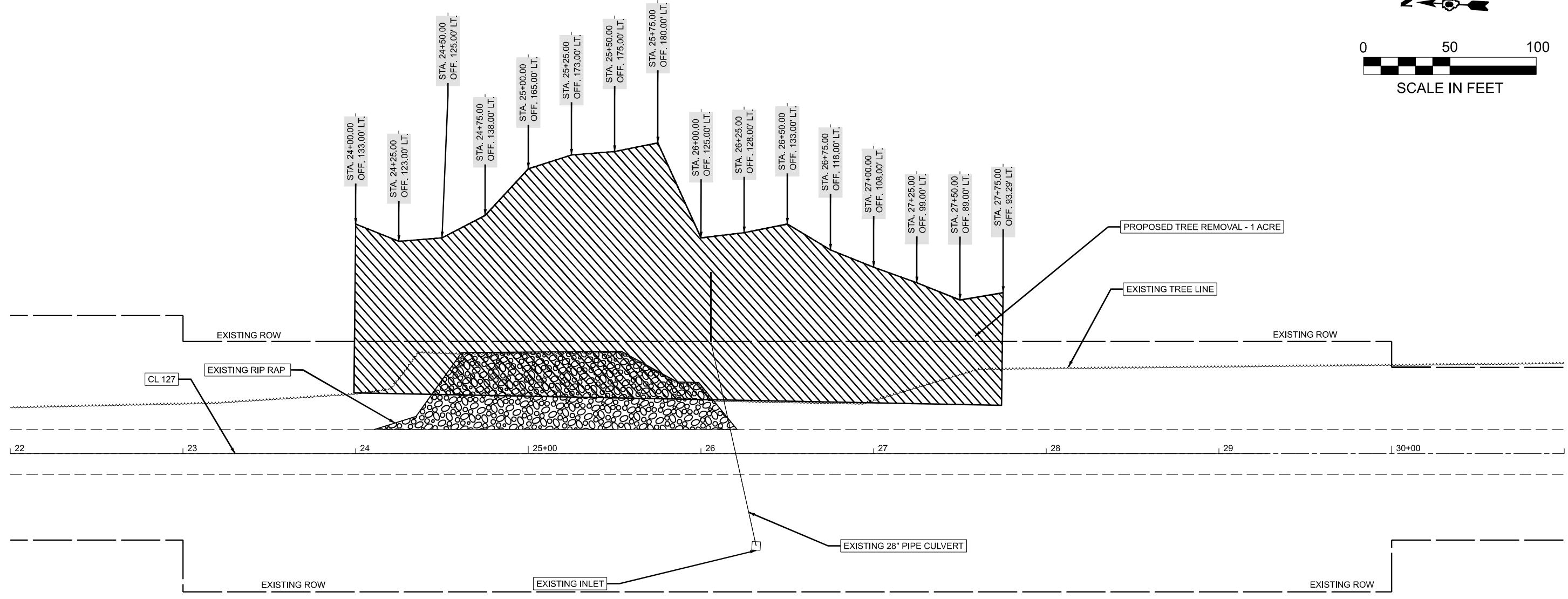
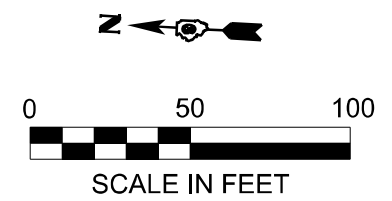
MODEL: \\mmd\hatch\Bhav
 FILE NAME: \\mmd\hatch\Bhav\Projects\78825\CAD\Drawings\DOT\Office\Drawings\DOT\78825-Schedule.dwg

USER NAME = Dacoda.Blackley	DESIGNED -	REVISED -
PLOT SCALE = 0.16666633' / in.	DRAWN -	REVISED -
PLOT DATE = 3/4/2024	CHECKED -	REVISED -
	DATE -	REVISED -

**STATE OF ILLINOIS
DEPARTMENT OF TRANSPORTATION**

SCHEDULES: SEEDING; PAVEMENT; PAVEMENT MARKING; TEMPORARY PAVEMENT MARKING	
SCALE:	SHEET 14 OF 37 SHEETS STA. TO STA.

F.A.S. RTE.	SECTION	COUNTY	TOTAL SHEETS	SHEET NO.
1909	12SLP-1	JACKSON	37	14
CONTRACT NO. 78825				
ILLINOIS FED. AID PROJECT				



MODEL: I:\17 - Removal (Sheet)
 FILE NAME: P:\MIDOT\Documents\DOT Office\District 9\ORD Project\78825\CADD\Site\78825-SubH-Removal.dgn

USER NAME = Dacoda.Blackley	DESIGNED -	REVISED -
PLOT SCALE = 0.16666633' / in.	DRAWN -	REVISED -
PLOT DATE = 1/25/2024	CHECKED -	REVISED -
	DATE -	REVISED -

**STATE OF ILLINOIS
DEPARTMENT OF TRANSPORTATION**

REMOVAL SHEET

SCALE: 1"=30' SHEET 15 OF 37 SHEETS STA. TO STA.

F.A.S. RTE.	SECTION	COUNTY	TOTAL SHEETS	SHEET NO.
1909	12SLP-1	JACKSON	37	15
CONTRACT NO. 78825				
ILLINOIS FED. AID PROJECT				

ALIGNMENT INFO			
FAS 1909 (IL RTE 127)			
POINT#	STATION	NORTHING	EASTING
IL1271	19+57.20	361318.34	2541972.10
IL1272	34+26.70	359851.21	2542055.39

PARCEL #	PROPERTY OWNER	PURPOSE	ACREAGE
022	RUTH ELIZABETH GRAMMER	P. E.	1.171 ACRES±

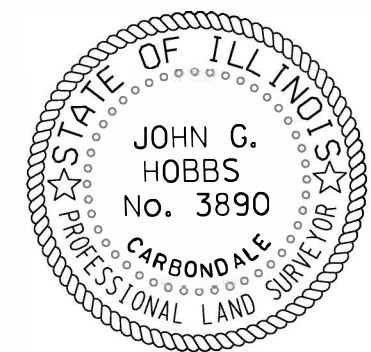
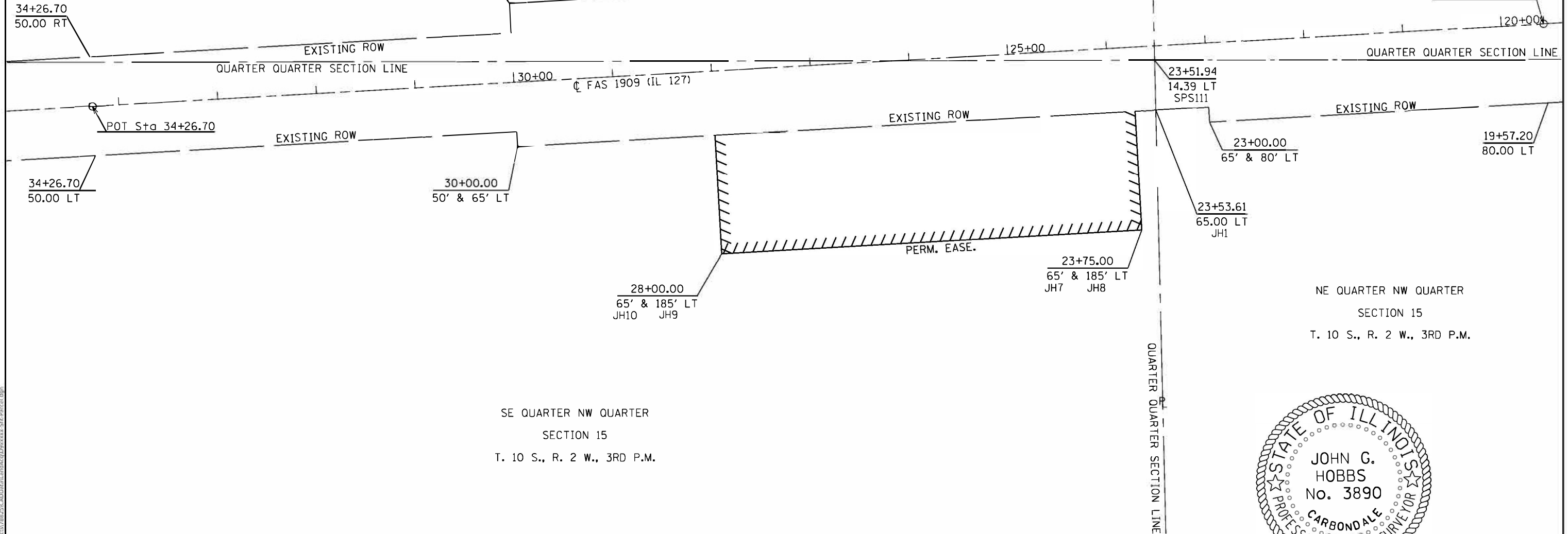
COORDINATE DATA		
PT#	NORTHING	EASTING
JH1	360926.26	2542059.46
JH2	360922.80	2541914.42
JH7	360904.90	2542060.67
JH8	360911.70	2542180.48
JH9	360487.38	2542204.57
JH10	360480.58	2542084.76
SPS111	360925.08	2542008.84

SW QUARTER NW QUARTER
SECTION 15
T. 10 S., R. 2 W., 3RD P.M.

NW QUARTER NW QUARTER
SECTION 15
T. 10 S., R. 2 W., 3RD P.M.

NE QUARTER NW QUARTER
SECTION 15
T. 10 S., R. 2 W., 3RD P.M.

SE QUARTER NW QUARTER
SECTION 15
T. 10 S., R. 2 W., 3RD P.M.

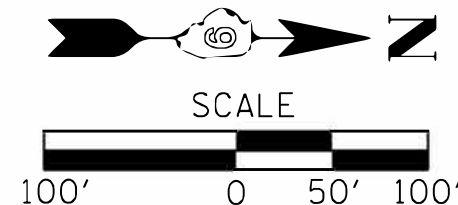


JOHN G. HOBBS
ILLINOIS PROFESSIONAL LAND SURVEYOR

Current license expires 11/2024.

This professional service conforms to the current Illinois minimum standards for a boundary survey.

NOTE:
LAND SURVEY DONE BY
SHAWNEE PROFESSIONAL SERVICES
02/01/2023
COORDINATE DATA
WGS 84 '97' ADJUSTMENT
ILLINOIS WEST ZONE



USER NAME = John.Hobbs	DESIGNED - _____	REVISED - _____
PLOT SCALE = 100.0000' / in.	DRAWN - _____	REVISED - _____
PLOT DATE = 5/9/2023	CHECKED - _____	REVISED - _____
	DATE - _____	REVISED - _____

STATE OF ILLINOIS
DEPARTMENT OF TRANSPORTATION

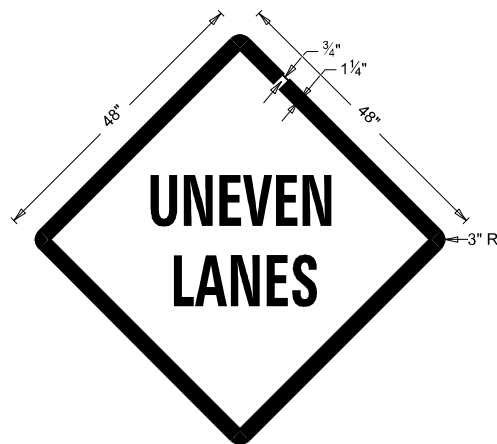
RIGHT OF WAY SHEET
SLOPE FAILURE AT SALT PETER CAVE

SCALE: 1" = 100' SHEET 1 OF 1 SHEETS STA. 19+57.20 TO STA. 34+26.70

F.A.S. RTE.	SECTION	COUNTY	TOTAL SHEETS	SHEET NO.
1909	12SLP-1	JACKSON	37	19
SEC. 15, T. 10 S., R. 2 W.		CONTRACT NO. 78825		
R-99-006-23		ILLINOIS FED. AID PROJECT		

MODEL: D:\dwg\... PROJECT: 17825\CADD\DATA\12SLP-1\12SLP-1-19.dwg

UNEVEN LANES SIGN
W8-11 (48" X 48")



COLORS:
LEGEND AND BORDER - BLACK NON-REFLECTORIZED
BACKGROUND - ORANGE REFLECTORIZED

NOTE: PRIOR TO ALLOWING TRAFFIC ON ANY PORTION OF THE ROADWAY THAT HAS BEEN COLDMILLED OR BEFORE RESURFACING OPERATIONS BEGIN, THE CONTRACTOR SHALL HAVE ERECTED "UNEVEN PAVEMENT" SIGNS THAT CONFORM TO THE ABOVE DETAILS. A MINIMUM OF ONE SIGN AT EACH END OF THE IMPROVEMENT WILL BE REQUIRED. THE CONTRACTOR SHALL MAINTAIN THE "UNEVEN PAVEMENT" SIGNS UNTIL THE RESURFACING OPERATIONS ARE COMPLETED.

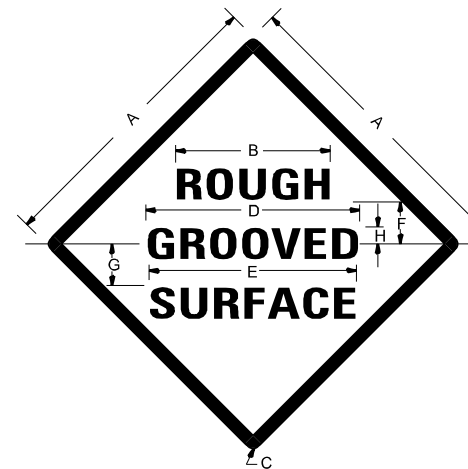
IF AT ANY TIME THE SIGNS ARE IN PLACE BUT NOT APPLICABLE, THEY SHALL BE TURNED FROM THE VIEW OF MOTORISTS OR COVERED AS DIRECTED BY THE ENGINEER.

THE COST OF FURNISHING, ERECTING, MAINTAINING, AND REMOVING THE REQUIRED SIGNS SHALL BE INCLUDED IN THE CONTRACT.

DRAWN	02-15-89
REVISION	05-08-08
REVISION	10-21-21
REVISION	05-27-22

STD. 9-24

ILLINOIS STANDARD
ROUGH GROOVED SURFACE SIGN



COLORS
LEGEND AND BORDER- BLACK NON-REFLECTORIZED
BACKGROUND- ORANGE REFLECTORIZED

SIGN SIZE	DIMENSIONS							
	A	B	C	D	E	F	G	H
48X48	48.0	24.1	3.0	34.0	33.0	6.0	13.0	3.5

SIGN SIZE	SERIES LINES			MARGIN	BORDER	BLANK STD.
	1	2	3			
48X48	7C	7C	7C	0.8	1.2	B4-48D

ALL DIMENSIONS IN INCHES

NOTES

PRIOR TO ALLOWING TRAFFIC ON ANY PORTION OF THE ROADWAY THAT HAS BEEN COLDMILLED, THE CONTRACTOR SHALL HAVE ERECTED "ROUGH GROOVED SURFACE" SIGNS THAT CONFORM TO THE ABOVE DETAILS. A MINIMUM OF ONE SIGN AT EACH END OF THE IMPROVEMENT WILL BE REQUIRED. THE CONTRACTOR SHALL MAINTAIN THE "ROUGH GROOVED SURFACE" SIGNS UNTIL THE COLDMILLED SURFACE IS COVERED WITH LEVELING BINDER OR SURFACE COURSE.

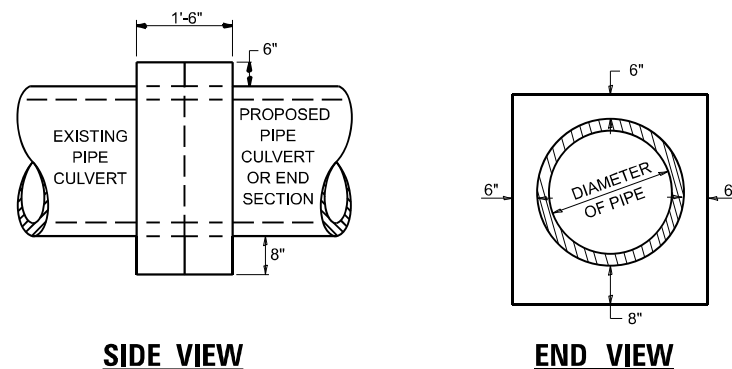
IF AT ANY TIME THE SIGNS ARE IN PLACE BUT NOT APPLICABLE, THEY SHALL BE TURNED FROM THE VIEW OF MOTORISTS OR COVERED AS DIRECTED BY THE ENGINEER.

THE COST OF FURNISHING, ERECTING, MAINTAINING, AND REMOVING THE REQUIRED SIGNS SHALL BE INCLUDED IN THE CONTRACT.

DRAWN	02-15-89
REVISION	03-27-08
REVISION	10-21-21
REVISION	05-27-22

STD. 9-23

CONCRETE COLLAR
PIPE TO PIPE



TABULATION

DIAMETER OF PIPE	CL SI CONC CU YDS EST
12"	0.24
15"	0.29
18"	0.32
24"	0.44
30"	0.56
36"	0.66
42"	0.80
48"	0.93
54"	1.07
60"	1.22
72"	1.55

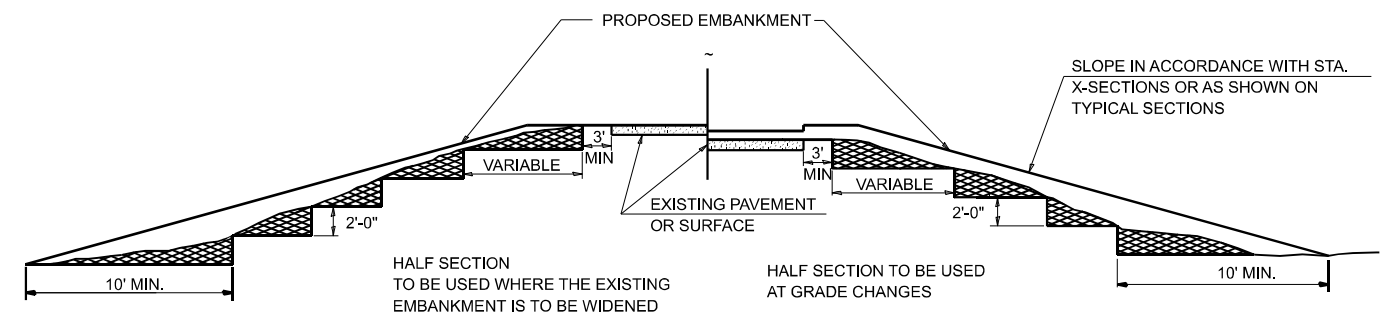
THE CONCRETE COLLAR SHALL BE PAID FOR AT THE CONTRACT UNIT PRICE PER CUBIC YARD FOR CONCRETE COLLAR, AS SHOWN ON THE PLANS, WHICH PRICE SHALL INCLUDE THE REMOVAL OF SUCH PORTIONS THE EXISTING HEADWALLS AS MAY BE REQUIRED.

CLASS SI CONCRETE SHALL BE USED THROUGHOUT.

DRAWN	07-13-90
REVISION	03-26-08
REVISION	10-21-21
REVISION	05-03-22

STD. 9-02

TYPICAL CROSS SECTION SHOWING
STEP CONSTRUCTION ON EXISTING FILL



STEPS SHALL BE CUT IN THE EXISTING SLOPE IN ACCORDANCE WITH ART. 205.03 EXCEPT THAT THE REQUIREMENT THAT STEPS SHALL BE CUT INTO THE EXISTING SLOPE BEFORE THE CONSTRUCTION OF THE EXISTING EMBANKMENT IS STARTED SHALL NOT APPLY. MATERIAL TO BE REMOVED AND REPLACED IN THE EMBANKMENT IN ACCORDANCE WITH ART. 205.04. COST TO BE INCLUDED IN THE VARIOUS ITEMS OF EXCAVATION AND NO ADDITIONAL COMPENSATION WILL BE ALLOWED BECAUSE OF THIS WORK.

DRAWN	02-15-89
REVISION	05-07-08
REVISION	10-21-21
REVISION	05-27-22

STD. 9-25

MODEL: D:\STD (Sheet) FILE NAME: P:\Illinois\Standard\Documents\DOT\Office\District 9\9RD Projects\78825\CAD\Drawings\0978825-SYS-District9.dgn

USER NAME = Dacoda.Blockley	DESIGNED -	REVISION -
PLOT SCALE = 0.16666633 1/ in.	DRAWN -	REVISION -
PLOT DATE = 1/25/2024	CHECKED -	REVISION -
	DATE -	REVISION -

STATE OF ILLINOIS
DEPARTMENT OF TRANSPORTATION

DETAILS: UNEVEN LANES; ROUGH GROOVED SURFACE; CONCRETE COLLAR; STEP CONSTRUCTION ON EXISTING FILL	F.A.S. RTE. 1909	SECTION 125LP-1	COUNTY JACKSON	TOTAL SHEETS 37	SHEET NO. 20
SCALE: SHEET 20 OF 37 SHEETS STA. TO STA.	CONTRACT NO. 78825				

ILLINOIS FED. AID PROJECT



SOIL BORING LOG

Date 4/6/20

ROUTE IL 127 DESCRIPTION Slope Failure North of Pomona Rd. LOGGED BY L. Estel
 SECTION 12SLP-1 LOCATION 4 mi S of Old IL 13 (East side of road), SEC. 15, TWP. 10S, RNG. 2W, 3 PM
 COUNTY Jackson DRILLING METHOD Hollow stem auger (8" O.D., 3.25" I.D.) HAMMER TYPE Auto SPT 140 lb

STRUCT. NO. Station	D E P T H	B L O W S	U C S Qu	M O I S T S	Surface Water Elev. _____ ft	Stream Bed Elev. _____ ft	Groundwater Elev.: ▽ First Encounter _____ ft ▽ Upon Completion _____ ft ▽ After _____ Hrs. _____ ft	D E P T H	B L O W S	U C S Qu	M O I S T S
M. Stiff Brown, Moist CLAY											
		2						16	5.7		12
		3	1.0	23				23	S		
		3	B					7			
		3						16	5.8		11
		3	B					24	S		
		2						517.20			
		2						4			
		2	0.8	22				18	3.9		12
		4	B					36	S		
		1						10			
		2	1.0	25				20	3.7		10
		3	B					40	S		
		1						512.20			
		3	0.8	25				34			
		3	B					66/4.5*			
(Brown and Grey)		1									
		3	0.5	28							
		3	B								
		1									
		2	0.8	24							
		4	B								
		2									
		9	3.7	15							
		11	S								
		5									

The Unconfined Compressive Strength (UCS) Failure Mode is indicated by (B-Bulge, S-Shear, P-Penetrometer, E-Estimated)
 Abbreviations W.O.H - Sampler Advanced By Weight of Hammer, W.O.P - Advanced by Weight of Pipe, B.S. - Before Seating
 The SPT (N value) is the sum of the last two blow values in each sampling zone (AASHTO T206) BBS, from 137 (Rev. 8-99)



SOIL BORING LOG

Date 4/8/20

ROUTE IL 127 DESCRIPTION Slope Failure North of Pomona Rd. LOGGED BY L. Estel
 SECTION 12SLP-1 LOCATION 4 mi S of Old IL 13 (East side of road), SEC. 15, TWP. 10S, RNG. 2W, 3 PM
 COUNTY Jackson DRILLING METHOD Hollow stem auger (8" O.D., 3.25" I.D.) HAMMER TYPE Auto SPT 140 lb

STRUCT. NO. Station	D E P T H	B L O W S	U C S Qu	M O I S T S	Surface Water Elev. _____ ft	Stream Bed Elev. _____ ft	Groundwater Elev.: ▽ First Encounter _____ ft ▽ Upon Completion _____ ft ▽ After _____ Hrs. _____ ft	D E P T H	B L O W S	U C S Qu	M O I S T S
RIP RAP											
								17	4.5		13
								22	S		
								519.20			
								22			
								43	2.2		12
								35/3.75"	S		
V. Stiff Brown, Moist CLAY								23			
								37	2.3		10
								30/4"	S		
								18			
								52	2.3		10
								30/2"	S		
								32			
								51	2.7		10
								17/2.75"	S		
								9			
								12	7.3		16
								9/3"	S		
								508.70			
								1	0.4		26
								1	B		
								526.70			
								2	0.9		25
								3	B		
								524.20			
								1			
								7	1.6		13
								6	S		
								521.70			
								5			

The Unconfined Compressive Strength (UCS) Failure Mode is indicated by (B-Bulge, S-Shear, P-Penetrometer, E-Estimated)
 Abbreviations W.O.H - Sampler Advanced By Weight of Hammer, W.O.P - Advanced by Weight of Pipe, B.S. - Before Seating
 The SPT (N value) is the sum of the last two blow values in each sampling zone (AASHTO T206) BBS, from 137 (Rev. 8-99)

MODEL: SoilBorLog1 (Sheet 1)
 FILE NAME: p:\data\projects\2020\20200601\DOT\Office\District 9\9090 Projects\78825\CAD\Drawings\DOT\78825-SNB-Soils.dgn
 File Name S:\MATERIALS GEOTECHNICAL\UNITGINT\PROJECTS\PROJECTS\FILE\JACKSON\POINT LOCATIONS\SLOPE\IL127 AMPHITHEATER\2020.GPJ Data Template D8TEMPLATE.GDT Date Printed 7/22/21
 Latitude 37.391590 Longitude -89.190733 Datum NAD83 Job Number

File Name S:\MATERIALS GEOTECHNICAL\UNITGINT\PROJECTS\PROJECTS\FILE\JACKSON\POINT LOCATIONS\SLOPE\IL127 AMPHITHEATER\2020.GPJ Data Template D8TEMPLATE.GDT Date Printed 7/22/21
 Latitude 37.391590 Longitude -89.190733 Datum NAD83 Job Number

USER NAME = Dacoda.Blockley	DESIGNED -	REVISED -	STATE OF ILLINOIS DEPARTMENT OF TRANSPORTATION	SOIL BORINGS			F.A.P. RTE.	SECTION	COUNTY	TOTAL SHEETS	SHEET NO.
DRAWN -	REVISED -	1909					12SLP-1	JACKSON	37	21	
PLOT SCALE = 0.16666633 1/16"	CHECKED -	REVISED -		CONTRACT NO. 78825							
PLOT DATE = 1/25/2024	DATE -	REVISED -		SCALE:	SHEET 21	OF 37	SHEETS	STA.	TO STA.	ILLINOIS	FED. AID PROJECT



SOIL BORING LOG

Date 6/7/21

ROUTE IL 127 DESCRIPTION Slope Failure North of Pomona Rd. LOGGED BY L. Estel
 SECTION 12SLP-1 LOCATION 4 mi S of Old IL 13 (West side of road), SEC. 15, TWP. 10S, RNG. 2W, 3 PM
 COUNTY Jackson DRILLING METHOD Hollow stem auger (8" O.D., 3.25" I.D.) HAMMER TYPE Auto SPT 140 lb

STRUCT. NO.	DEPTH (ft)	BULGE	SHOULDER	UNCONFINED COMPRESSIVE STRENGTH (tsf)	MOISTURE (%)	DESCRIPTION
BORING NO. <u>4-SF</u> Station <u>24+31</u> Offset <u>18.0ft Right</u> Ground Surface Elev. <u>542.2</u> ft						Surface Water Elev. _____ ft Stream Bed Elev. _____ ft
						Groundwater Elev.: ▽ First Encounter _____ ft ▽ Upon Completion _____ ft ▽ After _____ Hrs. _____ ft
V. Stiff Brown, Moist SILTY CLAY with SANDSTONE GRAVEL	6					Bottom of hole @ 20.75 ft No free water encountered To convert "N" values to "N60", multiply by 1.44; Hammer efficiency = 86.5%
V. Stiff Tan and Brown, Dry to Moist SILTY CLAY with SANDSTONE GRAVEL	9					Benchmark referenced to BM 224, Cut "X" on top of westernmost flange bolt on F.H. on E. side of IL 127 at Sta 9+00; EL. 624.47
Stiff Brown, Moist CLAY with SANDSTONE GRAVEL	18					TBM Top of pipe culvert, west side @ Sta 23+05; EL. 541.19
Hard Tan and Brown, Dry to Moist CLAY SHALE with SANDSTONE GRAVEL	29					
Hard Grey, Brown, and Tan, Dry CLAY SHALE with SANDSTONE LENSES	36					
Hard Brown and Grey, Dry CLAY SHALE	37					
(Borehole continued with rock coring)						

The Unconfined Compressive Strength (UCS) Failure Mode is indicated by (B-Bulge, S-Shear, P-Penetrator, E-Estimated) Abbreviations W.O.H - Sampler Advanced By Weight of Hammer, W.O.P - Advanced by Weight of Pipe, B.S. - Before Seating The SPT (N value) is the sum of the last two blow values in each sampling zone (AASHTO T206) BBS, from 137 (Rev. 8-99)

File Name S:\MATERIALS GEOTECHNICAL UNIT\GINT\PROJECTS\PROJECTS\FILE\JACKSON\POINT LOCATIONS\SLOPE\IN\127 AMP\HTEATER2020.GPJ Data Template DSTEMPLT.GDT Date Printed 7/23/21 Latitude 37.391653 Longitude -99.190838 Datum NAD83 Job Number



ROCK CORE LOG

Date 6/7/21

ROUTE IL 127 DESCRIPTION Slope Failure North of Pomona Rd. LOGGED BY L. Estel
 SECTION 12SLP-1 LOCATION 4 mi S of Old IL 13 (West side of road), SEC. 15, TWP. 10S, RNG. 2W, 3 PM
 COUNTY Jackson CORING METHOD Conventional rotary with water

STRUCT. NO.	DEPTH (ft)	CORING BARREL TYPE & SIZE	RECOVERY (%)	RQD (%)	CORE LENGTH (min/ft)	STRENGTH (tsf)
BORING NO. <u>4-SF</u> Station <u>24+31</u> Offset <u>18.0ft Right</u> Ground Surface Elev. <u>542.2</u> ft		<u>NV3 5FT NWJ</u>				
		Core Diameter <u>1.78</u> in Top of Rock Elev. <u>530.20</u> ft Begin Core Elev. <u>526.45</u> ft				
Hard Brown and Grey, Dry CLAY SHALE	1		33	50	10	2.1
Bottom of hole @ 20.75 ft						
Benchmark referenced to BM 224, Cut "X" on top of westernmost flange bolt on F.H. on E. side of IL 127 at Sta 9+00; Elev. 624.47						
TBM Top of pipe culvert, west side @ Sta 23+05; Elev. 541.19						

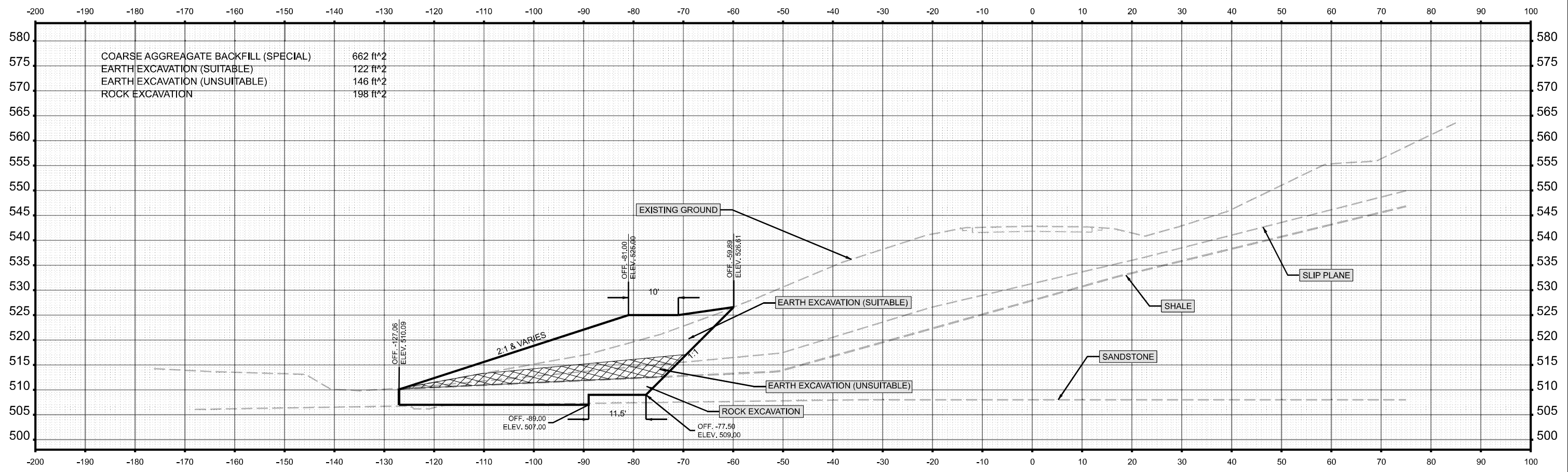
Color pictures of the cores Yes, attached
 Cores will be stored for examination until 5 Years after Construction
 The "Strength" column represents the uniaxial compressive strength of the core sample (ASTM D-2938)
 RQD is the ratio of the total length of sound core specimens >4" to total length of core run **BBS, form 138 (Rev. 8-99)**

ROCK CORE SLOPE\IN\127 AMP\HTEATER2020.GPJ DSTEMPLT.GDT 7/23/21

MODEL: SoilBorLog3 (Sheet 1)
FILE NAME: p:\fileshare\dot\documents\p\m\DOT\Documents\DOT Office\District 9\PRD Projects\78825\CAD\Drawings\DOT\8825-SN-Solils.dgn

USER NAME = Dacoda.Blockley	DESIGNED -	REVISED -	STATE OF ILLINOIS DEPARTMENT OF TRANSPORTATION	SOIL BORINGS		F.A.P. RTE.	SECTION	COUNTY	TOTAL SHEETS	SHEET NO.	
PLOT SCALE = 0.16666633 1/ in.	DRAWN -	REVISED -		SCALE:	SHEET 23 OF 37 SHEETS	STA.	TO STA.	1909	12SLP-1	JACKSON	37 23
PLOT DATE = 1/25/2024	CHECKED -	REVISED -		CONTRACT NO. 78825							
	DATE -	REVISED -		ILLINOIS FED. AID PROJECT							

MODEL: I:\17 - 24+00.00 (Sheet) FILE NAME: P:\GIS\Projects\DOT\Office\Direct\9080 Project\78825\CAD\Drawings\24_Rock_Sheet.dwg



STA 24+00.00

USER NAME = Dacoda.Blackley	DESIGNED -	REVISED -
	DRAWN -	REVISED -
PLOT SCALE = 0.16666633' / in.	CHECKED -	REVISED -
PLOT DATE = 1/25/2024	DATE -	REVISED -

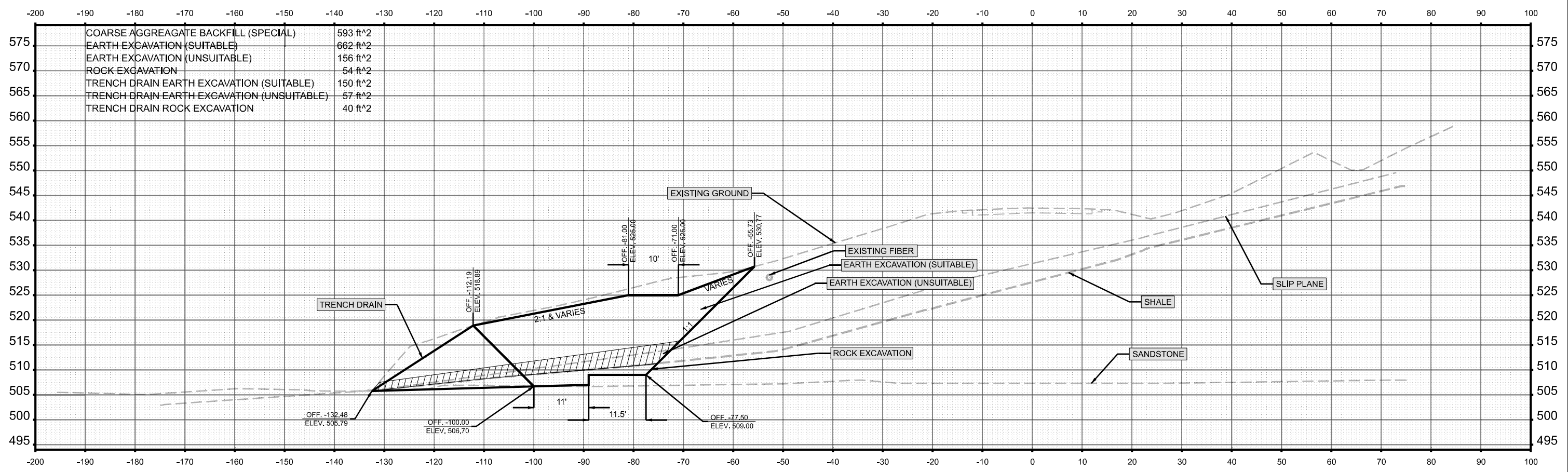
STATE OF ILLINOIS
DEPARTMENT OF TRANSPORTATION

CROSS SECTIONS

SCALE: 1"=10' SHEET 27 OF 37 SHEETS STA. TO STA.

F.A.S. RTE.	SECTION	COUNTY	TOTAL SHEETS	SHEET NO.
1909	12SLP-1	JACKSON	37	27
CONTRACT NO. 78825				
ILLINOIS FED. AID PROJECT				

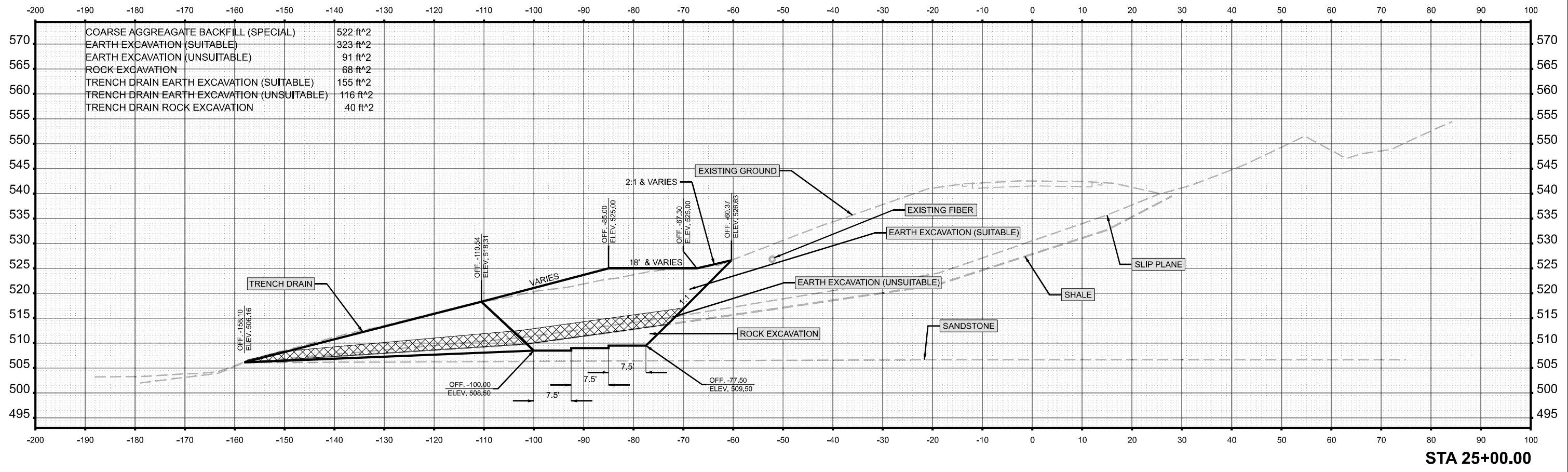
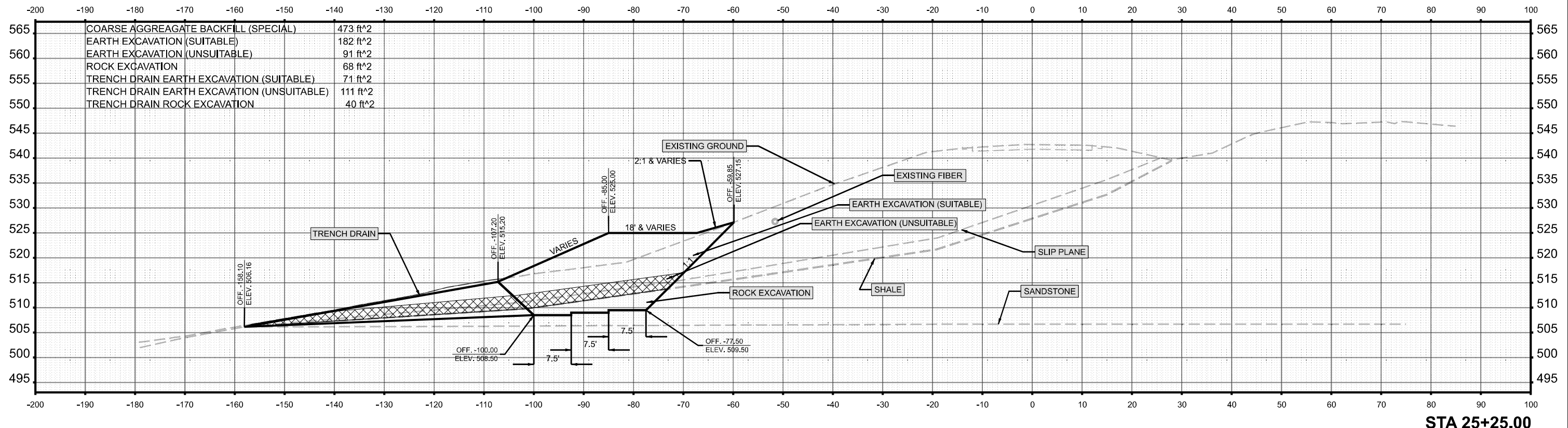
MODEL: I:\17 - 24+75.00 (Sheet)
 FILE NAME: P:\Bids\2024\Illinois\DOT\Documents\DOT Office\Direct\BORD Project\78825\CADD\Drawings\Rock\Rock_Sheet.dwg



575	COARSE AGGREGATE BACKFILL (SPECIAL)	593 ft ²
	EARTH EXCAVATION (SUITABLE)	662 ft ²
	EARTH EXCAVATION (UNSUITABLE)	156 ft ²
570	ROCK EXCAVATION	54 ft ²
565	TRENCH DRAIN EARTH EXCAVATION (SUITABLE)	150 ft ²
	TRENCH DRAIN EARTH EXCAVATION (UNSUITABLE)	57 ft ²
560	TRENCH DRAIN ROCK EXCAVATION	40 ft ²

STA 24+75.00

USER NAME = Dacoda.Blackley PLOT SCALE = 0.16666633' / in. PLOT DATE = 1/25/2024	DESIGNED -	REVISED -	STATE OF ILLINOIS DEPARTMENT OF TRANSPORTATION	CROSS SECTIONS			F.A.S. RTE.	SECTION	COUNTY	TOTAL SHEETS	SHEET NO.		
	DRAWN -	REVISED -		SCALE: 1"=10'	SHEET 30	OF 37 SHEETS	STA.	TO STA.	1909	12SLP-1	JACKSON	37	30
	CHECKED -	REVISED -								CONTRACT NO. 78825			
	DATE -	REVISED -								ILLINOIS FED. AID PROJECT			



MODEL: IL177-25-00.00 (Sheet)
 FILE NAME: P:\Illinois\2024\12SLP-1\12SLP-1\12SLP-1\CAD\Drawings\Rock_Sheet.dwg

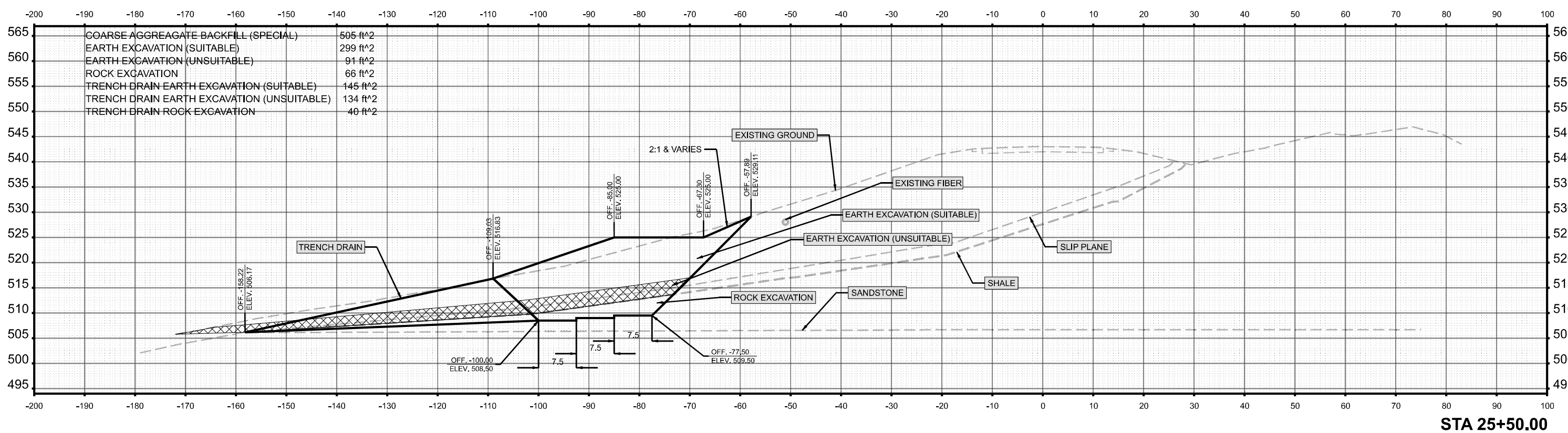
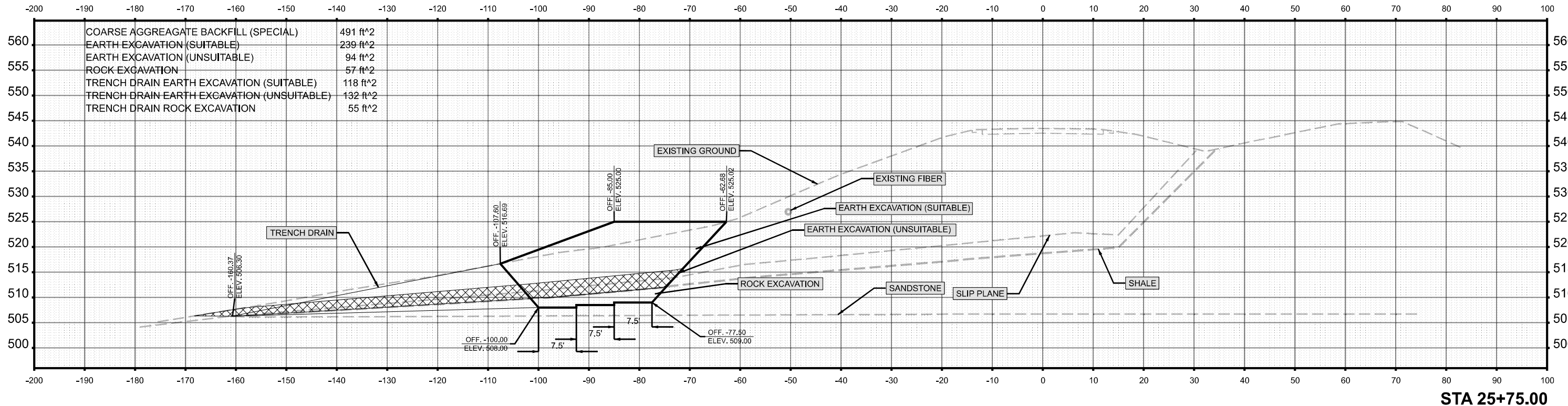
USER NAME = Dacoda.Blackley	DESIGNED -	REVISED -
	DRAWN -	REVISED -
PLOT SCALE = 0.16666833 / in.	CHECKED -	REVISED -
PLOT DATE = 1/25/2024	DATE -	REVISED -

**STATE OF ILLINOIS
DEPARTMENT OF TRANSPORTATION**

CROSS SECTIONS

SCALE: 1"=10' SHEET 31 OF 37 SHEETS STA. TO STA.

F.A.S. RTE.	SECTION	COUNTY	TOTAL SHEETS	SHEET NO.
1909	12SLP-1	JACKSON	37	31
CONTRACT NO. 78825				
ILLINOIS FED. AID PROJECT				



MODEL: I:\17 - 25+50.00 (Sheet)
 FILE NAME: P:\Illinois\Projects\2024\17000\17000.dwg

USER NAME = Dacoda.Blackley	DESIGNED -	REVISED -
	DRAWN -	REVISED -
PLOT SCALE = 0.16666833 / in.	CHECKED -	REVISED -
PLOT DATE = 1/25/2024	DATE -	REVISED -

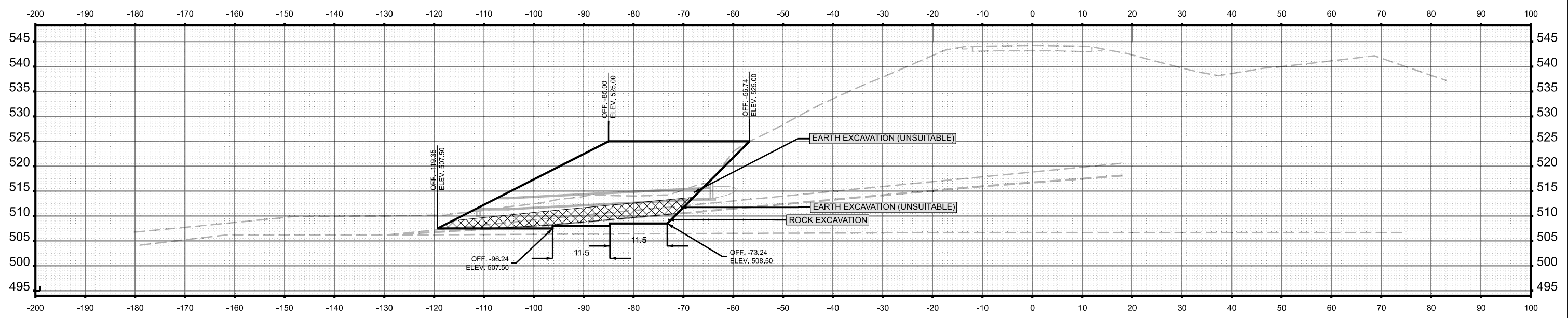
**STATE OF ILLINOIS
DEPARTMENT OF TRANSPORTATION**

CROSS SECTIONS

SCALE: 1"=10' SHEET 32 OF 37 SHEETS STA. TO STA.

F.A.S. RTE.	SECTION	COUNTY	TOTAL SHEETS	SHEET NO.
1909	SLP-1	JACKSON	37	32
CONTRACT NO. 78825				
ILLINOIS FED. AID PROJECT				

MODEL: I:\17_26+05.71 (Sheet)
 FILE NAME: P:\Bids\2024\17_26+05.71\17_26+05.71_Sheet34.dwg



STA 26+05.71

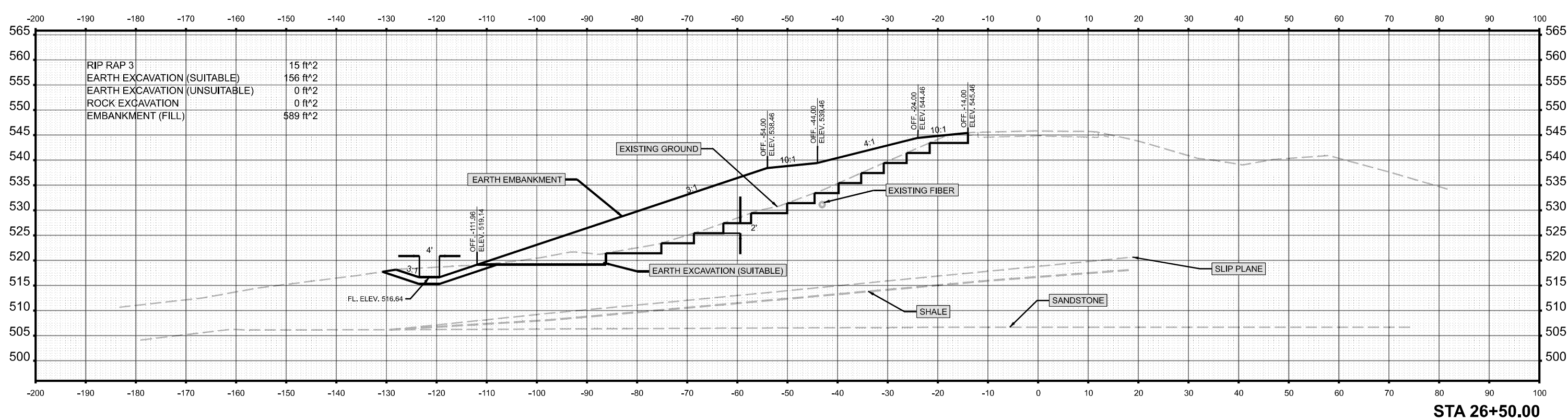
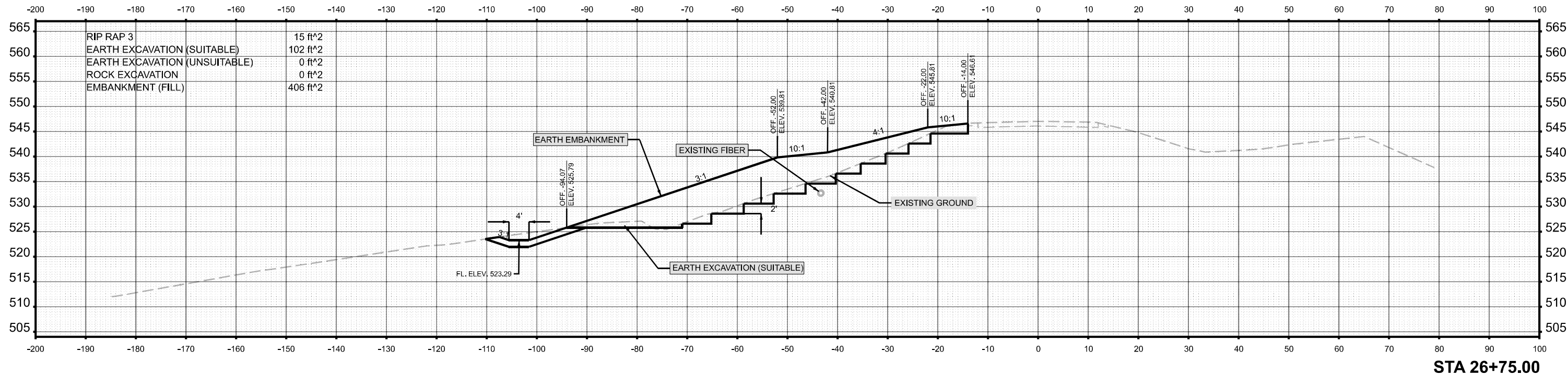
USER NAME = Dacoda.Blackley	DESIGNED -	REVISED -
	DRAWN -	REVISED -
PLOT SCALE = 0.16666633' / in.	CHECKED -	REVISED -
PLOT DATE = 1/25/2024	DATE -	REVISED -

STATE OF ILLINOIS
DEPARTMENT OF TRANSPORTATION

CROSS SECTIONS

SCALE: 1"=10' SHEET 34 OF 37 SHEETS STA. TO STA.

F.A.S. RTE.	SECTION	COUNTY	TOTAL SHEETS	SHEET NO.
1909	12SLP-1	JACKSON	37	34
ILLINOIS FED. AID PROJECT			CONTRACT NO. 78825	



MODEL: I:\17_26+50.00 (Sheet)
 FILE NAME: P:\Bids\2024\1726+50.00\Drawings\DOT\Office\Direct\9\ORD Project\78825\CAD\Drawings\26+50\Sheet.dwg

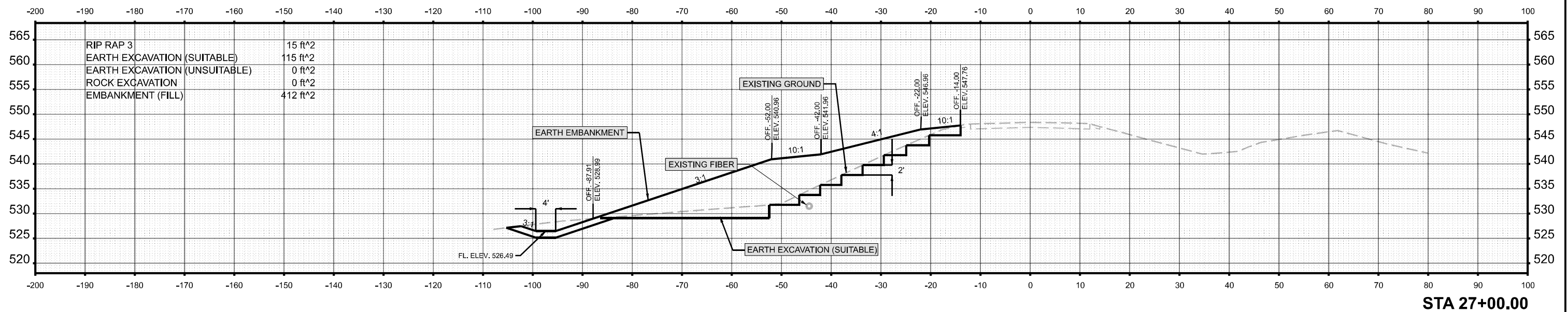
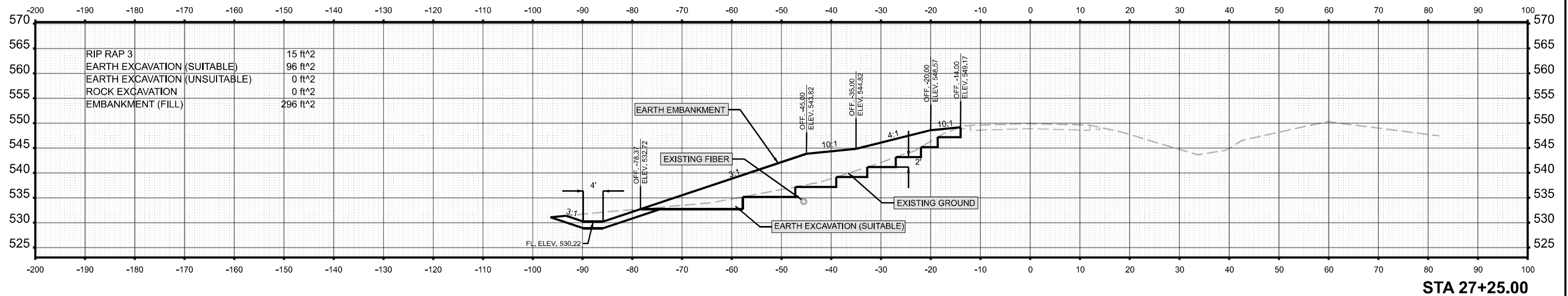
USER NAME = Dacoda.Blackley	DESIGNED -	REVISED -
	DRAWN -	REVISED -
PLOT SCALE = 0.16666833' / in.	CHECKED -	REVISED -
PLOT DATE = 1/25/2024	DATE -	REVISED -

**STATE OF ILLINOIS
DEPARTMENT OF TRANSPORTATION**

CROSS SECTIONS

SCALE: 1"=10' SHEET 35 OF 37 SHEETS STA. TO STA.

F.A.S. RTE.	SECTION	COUNTY	TOTAL SHEETS	SHEET NO.
1909	12SLP-1	JACKSON	37	35
CONTRACT NO. 78825				
ILLINOIS FED. AID PROJECT				



RIP RAP 3	15 ft ²
EARTH EXCAVATION (SUITABLE)	96 ft ²
EARTH EXCAVATION (UNSUITABLE)	0 ft ²
ROCK EXCAVATION	0 ft ²
EMBANKMENT (FILL)	296 ft ²

RIP RAP 3	15 ft ²
EARTH EXCAVATION (SUITABLE)	115 ft ²
EARTH EXCAVATION (UNSUITABLE)	0 ft ²
ROCK EXCAVATION	0 ft ²
EMBANKMENT (FILL)	412 ft ²

MODEL: I:\17 - 27+00.00 (Sheet)
 FILE NAME: P:\Illinois\Projects\1725\172500\172500.dwg

USER NAME = Dacoda.Blackley	DESIGNED -	REVISED -
PLOT SCALE = 0.16666833' / in.	DRAWN -	REVISED -
PLOT DATE = 1/25/2024	CHECKED -	REVISED -
	DATE -	REVISED -

**STATE OF ILLINOIS
DEPARTMENT OF TRANSPORTATION**

CROSS SECTIONS

SCALE: 1"=10' SHEET 36 OF 37 SHEETS STA. TO STA.

F.A.S. RTE.	SECTION	COUNTY	TOTAL SHEETS	SHEET NO.
1909	12SLP-1	JACKSON	37	36
CONTRACT NO. 78825			ILLINOIS FED. AID PROJECT	

