

STATE OF ILLINOIS
DEPARTMENT OF TRANSPORTATION

ROUTE	SECTION	COUNTY	SHEETS	NO.
817	(8,9)RS-3,10-1RS-2	WASHINGTON	14	1
		ILLINOIS	CONTRACT NO. 76T59	

D-98-031-24

FOR INDEX OF SHEETS, SEE SHEET NO. 2

PROPOSED HIGHWAY PLANS

FAP ROUTE 817 (IL 15)
SECTION (8,9)RS-3,10-1RS-2
PROJECT #STP-K4MN(071)
SMART RESURFACING
WASHINGTON COUNTY

C-98-093-24

WASHINGTON COUNTY		TRAFFIC DATA	
LOCATION	IL 15 (LOCATION 1)	2023 ADT	2900 (ACTUAL)
		2045 ADT	3700 (ESTIMATED)
MU %			7.8
SU %			3.5

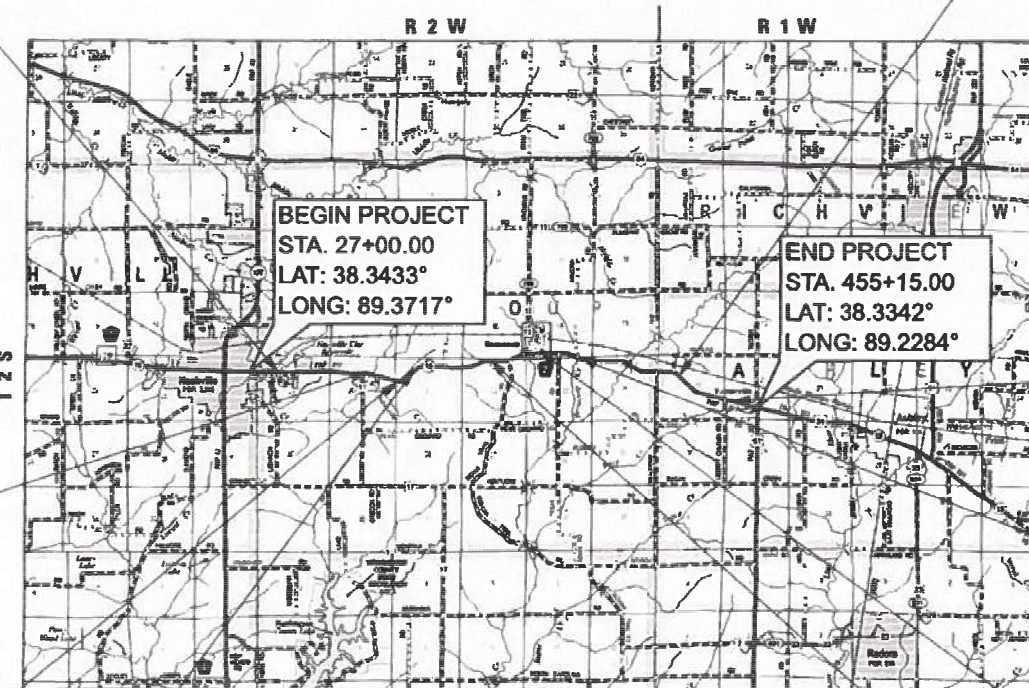
WASHINGTON COUNTY		TRAFFIC DATA	
LOCATION	IL 15 (LOCATION 2)	2023 ADT	2100 (ACTUAL)
		2045 ADT	2600 (ESTIMATED)
MU %			6.3
SU %			3.4

FUNCTIONAL CLASSIFICATION: MINOR ARTERIAL



BRIDGE OMISSION
SN 095-0011
STA. 36+06.00 TO
STA. 36+38.00

BRIDGE OMISSION
SN 095-0015
STA. 338+85.49 TO
STA. 339+13.49



BRIDGE OMISSION
SN 095-0400
STA. 121+00.61 TO
STA. 121+18.61

BRIDGE OMISSION
SN 095-2427
STA. 433+12.16 TO
STA. 433+20.16

BRIDGE OMISSION
SN 095-0014
STA. 296+39.49 TO
STA. 296+61.49

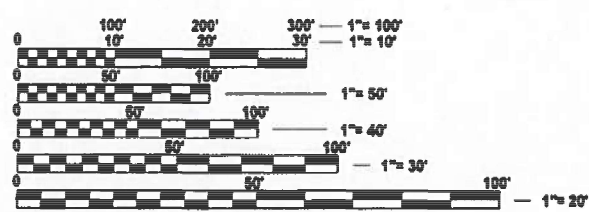
BRIDGE OMISSION
SN 095-2425
STA. 146+16.49 TO
STA. 146+26.69

BRIDGE OMISSION
SN 095-0013
STA. 255+47.23 TO
STA. 255+75.23

BRIDGE OMISSION
SN 095-2426
STA. 156+04.25 TO
STA. 156+12.25

LOCATION MAP
NOT TO SCALE
GROSS LENGTH = 42,815 FT. = 8.109 MILES
OMISSIONS = 177 FT. = 0.034 MILES
NET LENGTH = 42,638 FT. = 8.075 MILES

BRIDGE OMISSION
SN 095-0012
STA. 222+96.52 TO
STA. 223+18.92



FULL SIZE PLANS HAVE BEEN PREPARED USING STANDARD ENGINEERING SCALES. REDUCED SIZED PLANS WILL NOT CONFORM TO STANDARD SCALES. IN MAKING MEASUREMENTS ON REDUCED PLANS, THE ABOVE SCALES MAY BE USED.

J.U.L.I.E.
JOINT UTILITY LOCATION INFORMATION FOR EXCAVATION
1-800-892-0123
OR 811

PROJECT ENGINEER: CHERYL KEPLAR
PROJECT MANAGER: KAREN CHALLANDES

CONTRACT NO. 76T59

HMG ENGINEERS
HMG ENGINEERS, INC.
9360 HOLY CROSS LANE
BREESE, ILLINOIS 62230
888.HMG.ENGR
IL PROF. DESIGN FIRM NO. 184.000899
EXPIRES 04/30/2025



Emily M. Vonder Haar 2/2/2024
EMILY M. VONDER HAAR, P.E.
ILLINOIS REGISTERED ENGINEER NO. 062-075466
REGISTRATION EXPIRES NOV. 30, 2025

STATE OF ILLINOIS
DEPARTMENT OF TRANSPORTATION

SUBMITTED February 2, 2024
Keith A. Brown
REGIONAL ENGINEER

March 22, 2024
[Signature]
ENGINEER OF DESIGN AND ENVIRONMENT

March 22, 2024
[Signature]
DIRECTOR OF HIGHWAYS PROJECT IMPLEMENTATION

PRINTED BY THE AUTHORITY
OF THE STATE OF ILLINOIS

INDEX OF SHEETS

1	COVER SHEET
2	INDEX OF SHEETS, HIGHWAY STANDARDS, GENERAL NOTES, MIX CHART AND COMMITMENTS
3-4	SUMMARY OF QUANTITIES
5-9	TYPICAL SECTIONS
10-12	SCHEDULE OF QUANTITIES
13	LOCATION MAP
14	CONSTRUCTION DETAILS

HIGHWAY STANDARDS

000001-08	STANDARD SYMBOLS, ABBREVIATIONS AND PATTERNS	420001-10	PAVEMENT JOINTS
001006	DECIMAL OF AN INCH AND OF A FOOT	420701-03	PAVEMENT WELDED WIRE REINFORCEMENT
406201-01	MAILBOX TURNOUT	720006-04	SIGN PANEL ERECTION DETAILS
442101-09	CLASS B PATCHES	725001-01	OBJECT AND TERMINAL MARKERS
630001-13	STEEL PLATE BEAM GUARDRAIL	782006-01	GUARDRAIL AND BARRIER WALL REFLECTOR MOUNTING DETAILS
630106-02	LONG SPAN GUARDRAIL OVER CULVERT		
630301-09	SHOULDER WIDENING FOR TYPE 1 (SPECIAL) GUARDRAIL TERMINALS		
631032-10	TRAFFIC BARRIER TERMINAL, TYPE 6A		
642006-01	SHOULDER RUMBLE STRIPS, 8 IN		
701201-05	LANE CLOSURE, 2L, 2W, DAY ONLY, FOR SPEEDS ≥ 45 MPH		
701301-04	LANE CLOSURE, 2L, 2W, SHORT TIME OPERATIONS		
701306-04	LANE CLOSURE, 2L, 2W, SLOW MOVING OPERATIONS DAY ONLY, FOR SPEEDS ≥ 45 MPH		
701336-07	LANE CLOSURE, 2L, 2W, WORK AREAS IN SERIES, FOR SPEEDS ≥ 45 MPH		
701901-09	TRAFFIC CONTROL DEVICES		
720001-01	SIGN PANEL MOUNTING DETAILS		
728001-01	TELESCOPING STEEL SIGN SUPPORT		
780001-05	TYPICAL PAVEMENT MARKINGS		
781001-04	TYPICAL APPLICATIONS RAISED REFLECTIVE PAVEMENT MARKERS		
782001-01	CURB REFLECTORS		

GENERAL NOTES

- UTILITIES KNOWN TO HAVE FACILITIES WITHIN THE PROJECT AREA ARE AS FOLLOWS:

2	AMEREN ILLINOIS	ELECTRIC
	CITY OF ASHLEY	WATER & SANITARY SEWER
	AT&T ILLINOIS	COMMUNICATIONS
	CHARTER COMMUNICATIONS	CABLE TV
	CLEARWAVE FIBER LLC	COMMUNICATIONS
	COUNTRYMARK COOPERATIVE, LLC	PIPELINE
	FRONTIER COMMUNICATIONS	COMMUNICATIONS
	KINDER MORGAN	PIPELINE
	CITY OF NASHVILLE	GAS
	CITY OF NASHVILLE	WATER & SANITARY SEWER
	TRI-COUNTY ELECTRIC COOPERATIVE, INC	ELECTRIC
	WASHINGTON COUNTY WATER CO.	WATER
- THE CONTRACTOR SHALL VERIFY ALL DIMENSIONS AND CONDITIONS IN THE FIELD PRIOR TO CONSTRUCTION AND ORDERING MATERIALS.
- NO SURVEY WAS PERFORMED FOR THIS PROJECT, THE PLANS WERE CREATED USING MICROFILM AND FIELD MEASUREMENTS.
- THE BASELINE AND STATIONING SHOWN IS INTENDED TO BE A "BEST FIT" OF THE EXISTING ALIGNMENT AND MAY NOT MATCH ORIGINAL DESIGN PLANS EXACTLY.
- THE PROPOSED PAVEMENT MARKING SHALL MATCH THE LOCATION OF THE EXISTING PAVEMENT MARKING, AS DIRECTED BY THE ENGINEER.
- FACTORS FOR ESTIMATING PLAN QUANTITIES ARE AS FOLLOWS AND SHALL NOT BE USED FOR THE BASIS OF FINAL QUANTITIES:

HMA SURFACE	112 LBS./SQ. YD./IN.
BITUMINOUS MATERIALS (TACK COAT)	0.05 LBS./SQ. FT. (MILLED HMA)
AGGREGATE SHOUDLER	2.1 TONS/CY
- BUTT JOINT REMOVAL SHALL BE CONSIDERED AS INCLUDED WITH THE UNIT COST FOR HMA SURFACE REMOVAL 1 1/2".
- MATERIAL TRANSFER DEVICE CAN OPERATE IN AN UNLOADED CONDITION ON SN 095-2425, 095-2426, 095-2427
- MILLING AND RESURFACING SHALL BE OMITTED ON ALL STRUCTURES WITHIN THE PROJECT LIMITS. THIS INCLUDES THE FOLLOWING STRUCTURES:
SN: 095-0010, 095-0011, 095-0400, 095-2425, 095-2426, 095-0012, 095-0013, 095-0014, 095-0015, 095-2427

MIX CHART

MIXTURE USE	SURFACE	SHOULDER ≥ 8 ft ~ 503 TONS	SHOULDER ≤ 8 ft ~ 603 TONS
		SHOULDER (surface)	SHOULDER (surface)
AC/PG	PG 64-22	PG 64-22	PG 64-22
DESIGN AIR VOIDS	4.0% @ Ndes=70	4.0% @ Ndes=30	4.0% @ Ndes=30
MIX COMPOSTITION (Gradation)	IL 9.5	IL 9.5L	IL 9.5L
FRICTION AGG	MIXTURE "C"		
QUALITY MGMT PROGRAM	QCP	QC/QA	QC/QA
MatTranDev Required?	YES	NO	NO

PLAN QUANTITIES FOR HOT-MIX ASPHALT ITEMS ARE CALCULATED USING A UNIT WEIGHT OF 112 LB/SQ YD/IN (59.8 KG/SQ M/25 MM THICKNESS). ANY QCP PAY ITEM THAT HAS A QUANTITY OF 1600 TONS OR LESS WILL HAVE TWO SUBLOTS EACH OF WHICH WILL BE HALF OF THE PLAN QUANTITY OR HALF OF THE ADJUSTED QUANTITY BY THE RESIDENT ENGINEER/TECHNICIAN.

COMMITMENTS

NONE

REV. - MS

MODEL: GenNotes (Sheet)
FILE NAME: H:\249_PTB_198_0328249_090_W09_IL_15 SMARTCAD_Sheets\0676159-shr-gennotes.dgn



USER NAME = evonderhaar	DESIGNED - EMV	REVISED -
	DRAWN - EMV	REVISED -
PLOT SCALE = 0.16666633' / in.	CHECKED - BMR	REVISED -
PLOT DATE = 1/26/2024	DATE - 1/31/24	REVISED -

**STATE OF ILLINOIS
DEPARTMENT OF TRANSPORTATION**

**INDEX OF SHEETS, HIGHWAY STANDARDS, GENERAL NOTES
MIX CHART, AND COMMITMENTS**

SCALE: NTS SHEET 1 OF 1 SHEETS STA. TO STA.

F.A.P. RTE.	SECTION	COUNTY	TOTAL SHEETS	SHEET NO.
817	(8.9)RS-3,10-1RS-2	WASHINGTON	14	2
CONTRACT NO. 76T59				
ILLINOIS FED. AID PROJECT				

80% FED
20% STATE

CONSTR. CODE

CODE NO.	ITEM	UNIT	TOTAL QUANTITY	80% FED 20% STATE	
				ROADWAY 0005	RURAL
40600290	BITUMINOUS MATERIALS (TACK COAT)	POUND	57878	57878	
40600370	LONGITUDINAL JOINT SEALANT	FOOT	42595	42595	
40600990	TEMPORARY RAMP	SQ YD	388	388	
40604052	HOT-MIX ASPHALT SURFACE COURSE, IL-9.5, MIX "C", N70	TON	9883	9883	
42000060	WELDED WIRE REINFORCEMENT	SQ YD	302	302	
44000155	HOT-MIX ASPHALT SURFACE REMOVAL, 1 1/2"	SQ YD	128626	128626	
44200982	CLASS B PATCHES, TYPE II, 11 INCH	SQ YD	275	275	
44200986	CLASS B PATCHES, TYPE III, 11 INCH	SQ YD	208	208	
44200988	CLASS B PATCHES, TYPE IV, 11 INCH	SQ YD	94	94	
44201297	DOWEL BARS 1"	EACH	820	820	
44213200	SAW CUTS	FOOT	2340	2340	
44213204	TIE BARS 3/4"	EACH	24	24	
48102100	AGGREGATE WEDGE SHOULDER, TYPE B	TON	1999	1999	
48203100	HOT-MIX ASPHALT SHOULDERS	TON	1081	1081	

80% FED
20% STATE

CONSTR. CODE

CODE NO.	ITEM	UNIT	TOTAL QUANTITY	80% FED 20% STATE	
				ROADWAY 0005	RURAL
* 63000001	STEEL PLATE BEAM GUARDRAIL, TYPE A, 6 FOOT POSTS	FOOT	720	720	
* 63000360	LONG-SPAN GUARDRAIL OVER CULVERT, 18 FT 9 IN SPAN	FOOT	88	88	
* 63100167	TRAFFIC BARRIER TERMINAL, TYPE 1 (SPECIAL) TANGENT	EACH	24	24	
63200310	GUARDRAIL REMOVAL	FOOT	2735	2735	
64200108	SHOULDER RUMBLE STRIPS, 8 INCH	FOOT	26181	26181	
67000400	ENGINEER'S FIELD OFFICE, TYPE A	CAL MO	4	4	
67100100	MOBILIZATION	L SUM	1	1	
70100450	TRAFFIC CONTROL AND PROTECTION, STANDARD 701201	L SUM	1	1	
70100460	TRAFFIC CONTROL AND PROTECTION, STANDARD 701306	L SUM	1	1	
70100600	TRAFFIC CONTROL AND PROTECTION, STANDARD 701336	L SUM	1	1	
70300100	SHORT TERM PAVEMENT MARKING	FOOT	8065	8065	
70300150	SHORT TERM PAVEMENT MARKING REMOVAL	SQ FT	2662	2662	
70300211	TEMPORARY PAVEMENT MARKING LETTERS AND SYMBOLS - PAINT	SQ FT	46.8	46.8	
70300241	TEMPORARY PAVEMENT MARKING - LINE 6"- PAINT	FOOT	145077	145077	

* SPECIALTY ITEM

MODEL: SCQ (Sheet)
FILE NAME: H:\8249_PTB_199_0328249_090_1\009_IL_15 SMARTCAD_Sheets\8249\8249-01-15-SCQ.dgn



USER NAME = evonderhaar
DESIGNED - EMV
DRAWN - EMV
CHECKED - BMR
DATE - 1/31/24

REVISED -
REVISED -
REVISED -
REVISED -

STATE OF ILLINOIS
DEPARTMENT OF TRANSPORTATION

SUMMARY OF QUANTITIES

SCALE: NTS SHEET 1 OF 2 SHEETS STA. TO STA.

F.A.P. RTE.	SECTION	COUNTY	TOTAL SHEETS	SHEET NO.
817	(6.9)RS-3,10-1RS-2	WASHINGTON	14	3
CONTRACT NO. 76T59				
ILLINOIS FED. AID PROJECT				

80% FED
20% STATE

CODE NO.	ITEM	UNIT	TOTAL QUANTITY	CONSTR. CODE	
				ROADWAY 0005	RURAL
* 72000100	SIGN PANEL - TYPE 1	SQ FT	206	206	
* 72501000	TERMINAL MARKER - DIRECT APPLIED	EACH	74	74	
* 72800100	TELESCOPING STEEL SIGN SUPPORT	FOOT	603	603	
* 78000100	THERMOPLASTIC PAVEMENT MARKING - LETTERS AND SYMBOLS	SQ FT	46.8	46.8	
* 78000400	THERMOPLASTIC PAVEMENT MARKING - LINE 6"	FOOT	145077	145077	
* 78100100	RAISED REFLECTIVE PAVEMENT MARKER	EACH	583	583	
* 78200005	GUARDRAIL REFLECTORS, TYPE A	EACH	58	58	
* 78200020	CURB REFLECTORS	EACH	76	76	
78300200	RAISED REFLECTIVE PAVEMENT MARKER REMOVAL	EACH	583	583	
78300202	PAVEMENT MARKING REMOVAL - WATER BLASTING	SQ FT	72585	72585	
X0326898	CENTER LINE - RUMBLE STRIP - 16"	FOOT	31267	31267	
* X6310188	TRAFFIC BARRIER TERMINAL, TYPE 6A (MODIFIED)	EACH	20	20	
Ø Z0076600	TRAINEES	HOUR	1500	1500	
* X7800200	PAINT PAVEMENT MARKING CURB	FOOT	80	80	
Ø Z0076604	TRAINEES TRAINING PROGRAM GRADUATE	HOUR	1500	1500	
Z0034105	MATERIAL TRANSFER DEVICE	TON	9883	9883	

* SPECIALTY ITEM

REV. - MS

MODEL: SOCC-1 (Sheet)
FILE NAME: H:\8249_PTB_199_0328249_090_1\009_IL 15 SMARTCAD_Sheets\8249\8249-01-15-2024.dgn



USER NAME = evonderhaar
PLOT SCALE = 0.16666633 1/In.
PLOT DATE = 1/30/2024

DESIGNED - EMV
DRAWN - EMV
CHECKED - BMR
DATE - 1/31/24

REVISED -
REVISED -
REVISED -
REVISED -

STATE OF ILLINOIS
DEPARTMENT OF TRANSPORTATION

SUMMARY OF QUANTITIES

SCALE: NTS SHEET 2 OF 2 SHEETS STA. TO STA.

F.A.P. RTE.	SECTION	COUNTY	TOTAL SHEETS	SHEET NO.
817	(6.9)RS-3,10-1RS-2	WASHINGTON	14	4
			CONTRACT NO. 76T59	
			ILLINOIS FED. AID PROJECT	

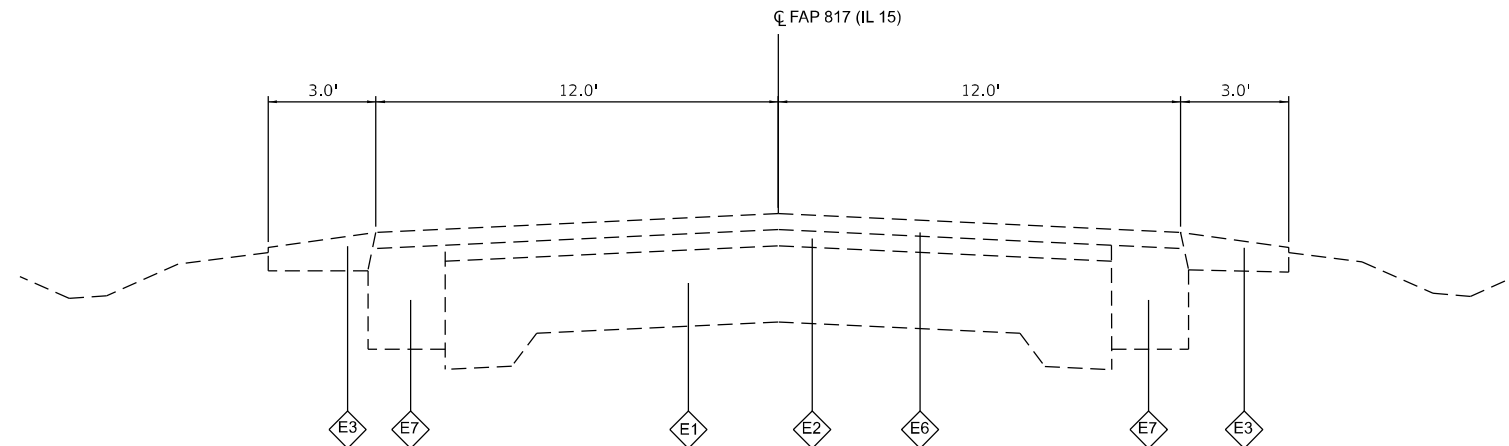
TYPICAL SECTION LEGEND

- E1 EX CONCRETE PAVEMENT
- E2 EX HMA PAVEMENT
- E3 EX AGG SHLDS (VARIABLE THICKNESS)
- E4 EX HMA SHLDS
- E5 EX CONC MEDIAN
- E6 EX HMA, 2"
- E7 EX HMA WIDENING, 9"
- P1 PR HMA SURF REM, 1.50"
- P2 PR LONGITUDINAL JT SEALANT
- P3 PR HMA SHOULDER, 1.5"
- P4 PR BIT MAT (TACK COAT)
- P5 PR HMA SURF CSE, IL-9.5, MIX "C" 1.50"
- P6 PR AGG WEDGE SHLDR, TY B
- P7 PR SHOULDER RUMBLE STRIPS, 8"
- P8 PR \bar{C} RUMBLE STRIPS, 16"

TYPICAL SECTION NOTES

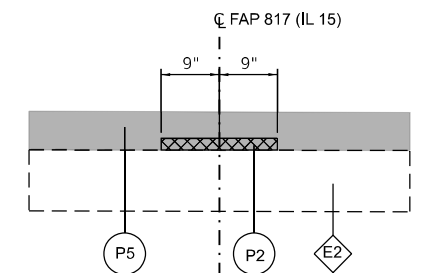
- 1 \bar{C} RUMBLE STRIPS, 16" SHALL BE INSTALLED AT THE FOLLOWING STATION RANGES
STA. 113+41.00 TO STA. 428+20.00
- 2 EXISTING GUARDRAIL FROM
STA. 27+00 TO STA. 29+00
STA. 31+00 TO STA. 35+00
STA. 211+00 TO STA. 216+00

REPLACE GUARDRAIL FROM
STA. 120+07.61 TO STA. 122+59.61
STA. 144+69.59 TO STA. 147+73.59
STA. 221+82.72 TO STA. 224+22.72
STA. 254+46.23 TO STA. 256+76.23
STA. 295+48.49 TO STA. 297+65.49
STA. 337+84.49 TO STA. 340+14.49
- 3 MILLING AND RESURFACING SHALL BE OMITTED OVER STRUCTURES. THIS INCLUDES THE FOLLOWING STATION RANGES:
STA. 36+06.00 TO STA. 36+38.00
STA. 121+00.61 TO STA. 121+18.61
STA. 146+16.49 TO STA. 146+26.69
STA. 156+04.25 TO STA. 156+12.25
STA. 222+96.52 TO STA. 223+18.92
STA. 255+47.23 TO STA. 255+75.23
STA. 296+39.49 TO STA. 296+61.49
STA. 338+85.49 TO STA. 339+13.49
STA. 433+12.16 TO STA. 433+20.16

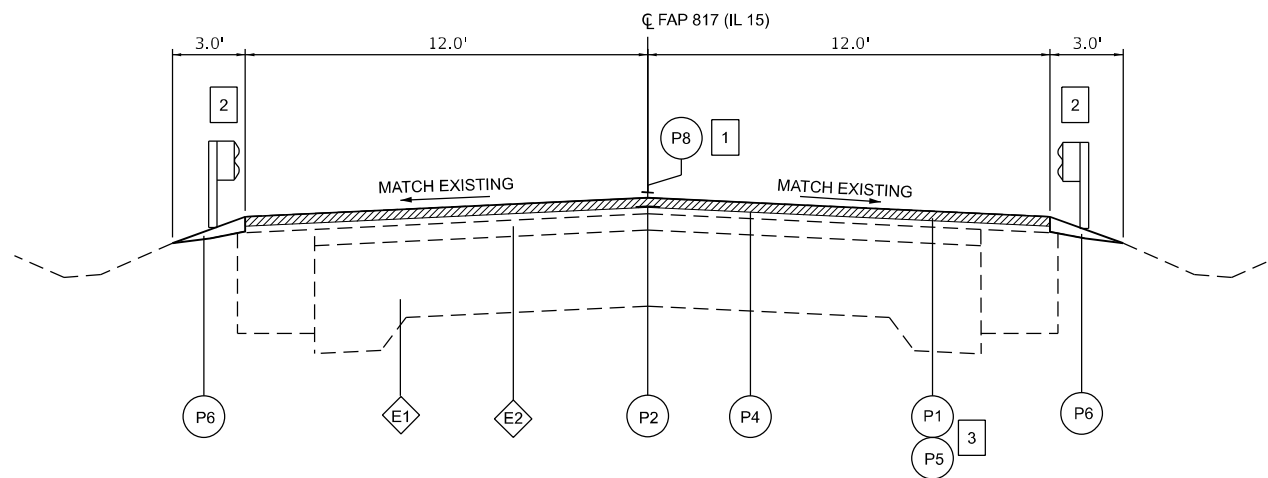


EXISTING TYPICAL SECTION

STA. 27+00.00 TO STA. 119+58.61
 STA. 170+00.00 TO STA. 217+12.67
 STA. 221+05.86 TO STA. 234+63.30
 STA. 253+01.55 TO STA. 279+66.34
 STA. 310+68.58 TO STA. 428+00.00



LONGITUDINAL JOINT SEALANT - DETAIL



PROPOSED TYPICAL SECTION

STA. 27+00.00 TO STA. 119+58.61
 STA. 170+00.00 TO STA. 217+12.67
 STA. 221+05.86 TO STA. 234+63.30
 STA. 253+01.55 TO STA. 279+66.34
 STA. 310+68.58 TO STA. 428+00.00

MODEL: Typical (Sheet) FILE NAME: H:\8249_PTB_199_0328249_090_W09_IL_15_SMARTCAD_Sheets\8249\8249-shr-typical.dgn



USER NAME = evonderhaar	DESIGNED - EMV	REVISED -
PLOT SCALE = 0.16666833' / in.	DRAWN - EMV	REVISED -
PLOT DATE = 1/30/2024	CHECKED - BMR	REVISED -
	DATE - 1/31/24	REVISED -

STATE OF ILLINOIS
DEPARTMENT OF TRANSPORTATION

TYPICAL SECTIONS

SCALE: NTS SHEET 1 OF 5 SHEETS STA. TO STA.

F.A.P. RTE.	SECTION	COUNTY	TOTAL SHEETS	SHEET NO.
817	(6.9)RS-3,10-1RS-2	WASHINGTON	14	5
CONTRACT NO. 76T59				
ILLINOIS FED. AID PROJECT				

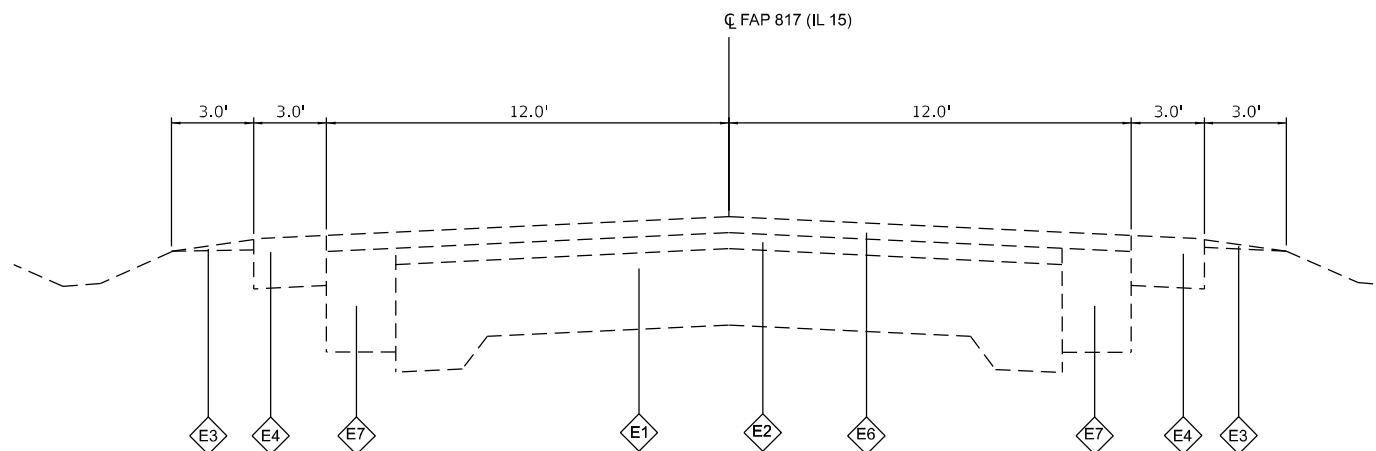
TYPICAL SECTION LEGEND

- E1 EX CONCRETE PAVEMENT
- E2 EX HMA PAVEMENT
- E3 EX AGG SHLDS (VARIABLE THICKNESS)
- E4 EX HMA SHLDS
- E5 EX CONC MEDIAN
- E6 EX HMA, 2"
- E7 EX HMA WIDENING, 9"
- P1 PR HMA SURF REM, 1.50"
- P2 PR LONGITUDINAL JT SEALANT
- P3 PR HMA SHOULDER, 1.5"
- P4 PR BIT MAT (TACK COAT)
- P5 PR HMA SURF CSE, IL-9.5, MIX "C" 1.50"
- P6 PR AGG WEDGE SHLDR, TY B
- P7 PR SHOULDER RUMBLE STRIPS, 8"
- P8 PR \bar{C} RUMBLE STRIPS, 16"

TYPICAL SECTION NOTES

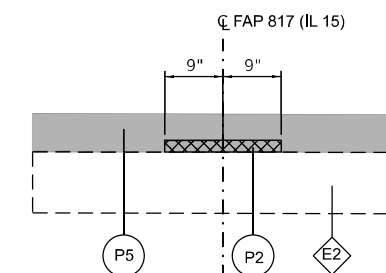
- 1 \bar{C} RUMBLE STRIPS, 16" SHALL BE INSTALLED AT THE FOLLOWING STATION RANGES
STA. 113+41.00 TO STA. 428+20.00
- 2 EXISTING GUARDRAIL FROM
STA. 27+00 TO STA. 29+00
STA. 31+00 TO STA. 35+00
STA. 211+00 TO STA. 216+00

REPLACE GUARDRAIL FROM
STA. 120+07.61 TO STA. 122+59.61
STA. 144+69.59 TO STA. 147+73.59
STA. 221+82.72 TO STA. 224+22.72
STA. 254+46.23 TO STA. 256+76.23
STA. 295+48.49 TO STA. 297+65.49
STA. 337+84.49 TO STA. 340+14.49
- 3 MILLING AND RESURFACING SHALL BE OMITTED OVER STRUCTURES. THIS INCLUDES THE FOLLOWING STATION RANGES:
STA. 36+06.00 TO STA. 36+38.00
STA. 121+00.61 TO STA. 121+18.61
STA. 146+16.49 TO STA. 146+26.69
STA. 156+04.25 TO STA. 156+12.25
STA. 222+96.52 TO STA. 223+18.92
STA. 255+47.23 TO STA. 255+75.23
STA. 296+39.49 TO STA. 296+61.49
STA. 338+85.49 TO STA. 339+13.49
STA. 433+12.16 TO STA. 433+20.16

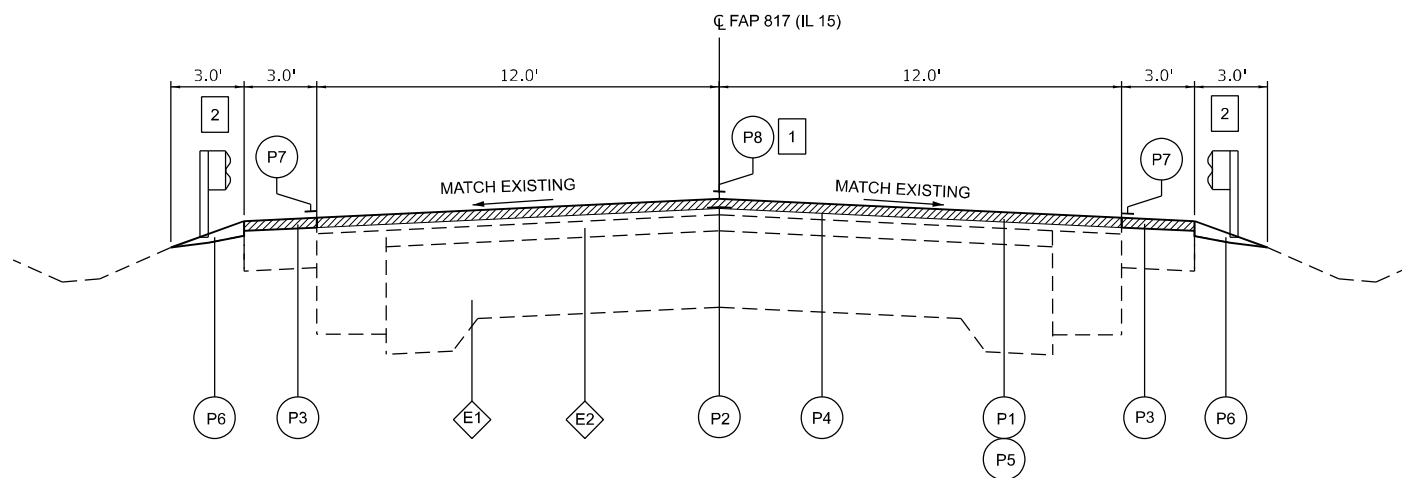


EXISTING TYPICAL SECTION

STA. 119+58.61 TO STA. 170+00.00
 STA. 217+12.67 TO STA. 221+05.86
 STA. 234+63.30 TO STA. 253+01.55
 STA. 279+66.34 TO STA. 310+68.58
 STA. 428+00.00 TO STA. 455+15.00



LONGITUDINAL JOINT SEALANT - DETAIL



PROPOSED TYPICAL SECTION

STA. 119+58.61 TO STA. 170+00.00
 STA. 217+12.67 TO STA. 221+05.86
 STA. 234+63.30 TO STA. 253+01.55
 STA. 279+66.34 TO STA. 310+68.58
 STA. 428+00.00 TO STA. 428+20.00

MODEL: I:\unfiled (Sheet) FILE NAME: H:\8249_PTB_199_0328249_090_W09_IL_15_SMARTCAD_Sheets\8249_PTB_199_0328249_090-W09-15-smart-typical.dgn



USER NAME = evonderhaar	DESIGNED - EMV	REVISED -
PLOT SCALE = 0.16666833' / in.	DRAWN - EMV	REVISED -
PLOT DATE = 1/30/2024	CHECKED - BMR	REVISED -
	DATE - 1/31/24	REVISED -

**STATE OF ILLINOIS
DEPARTMENT OF TRANSPORTATION**

TYPICAL SECTIONS

SCALE: NTS SHEET 2 OF 5 SHEETS STA. TO STA.

F.A.P. RTE.	SECTION	COUNTY	TOTAL SHEETS	SHEET NO.
817	(6.9)RS-3,10-1RS-2	WASHINGTON	14	6
CONTRACT NO. 76T59				
ILLINOIS FED. AID PROJECT				

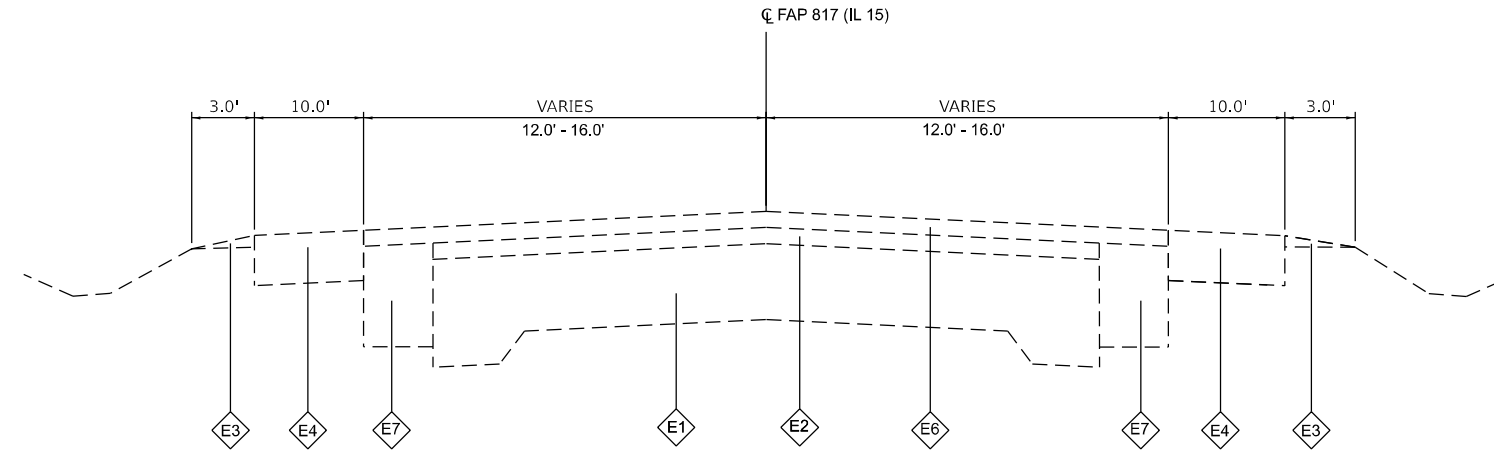
TYPICAL SECTION LEGEND

- ◊ E1 EX CONCRETE PAVEMENT
- ◊ E2 EX HMA PAVEMENT
- ◊ E3 EX AGG SHLDS (VARIABLE THICKNESS)
- ◊ E4 EX HMA SHLDS
- ◊ E5 EX CONC MEDIAN
- ◊ E6 EX HMA, 2"
- ◊ E7 EX HMA WIDENING, 9"
- P1 PR HMA SURF REM, 1.50"
- P2 PR LONGITUDINAL JT SEALANT
- P3 PR HMA SHOULDER, 1.5"
- P4 PR BIT MAT (TACK COAT)
- P5 PR HMA SURF CSE, IL-9.5, MIX "C" 1.50"
- P6 PR AGG WEDGE SHLDR, TY B
- P7 PR SHOULDER RUMBLE STRIPS, 8"
- P8 PR \bar{C} RUMBLE STRIPS, 16"

TYPICAL SECTION NOTES

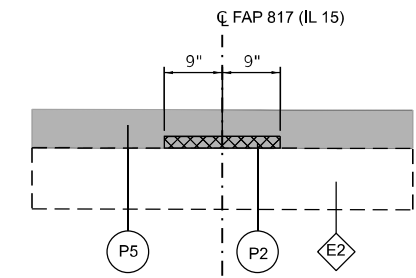
- 1 \bar{C} RUMBLE STRIPS, 16" SHALL BE INSTALLED AT THE FOLLOWING STATION RANGES
STA. 113+41.00 TO STA. 428+20.00
- 2 EXISTING GUARDRAIL FROM
STA. 27+00 TO STA. 29+00
STA. 31+00 TO STA. 35+00
STA. 211+00 TO STA. 216+00

REPLACE GUARDRAIL FROM
STA. 120+07.61 TO STA. 122+59.61
STA. 144+69.59 TO STA. 147+73.59
STA. 221+82.72 TO STA. 224+22.72
STA. 254+46.23 TO STA. 256+76.23
STA. 295+48.49 TO STA. 297+65.49
STA. 337+84.49 TO STA. 340+14.49
- 3 MILLING AND RESURFACING SHALL BE OMITTED OVER STRUCTURES. THIS INCLUDES THE FOLLOWING STATION RANGES:
STA. 36+06.00 TO STA. 36+38.00
STA. 121+00.61 TO STA. 121+18.61
STA. 146+16.49 TO STA. 146+26.69
STA. 156+04.25 TO STA. 156+12.25
STA. 222+96.52 TO STA. 223+18.92
STA. 255+47.23 TO STA. 255+75.23
STA. 296+39.49 TO STA. 296+61.49
STA. 338+85.49 TO STA. 339+13.49
STA. 433+12.16 TO STA. 433+20.16

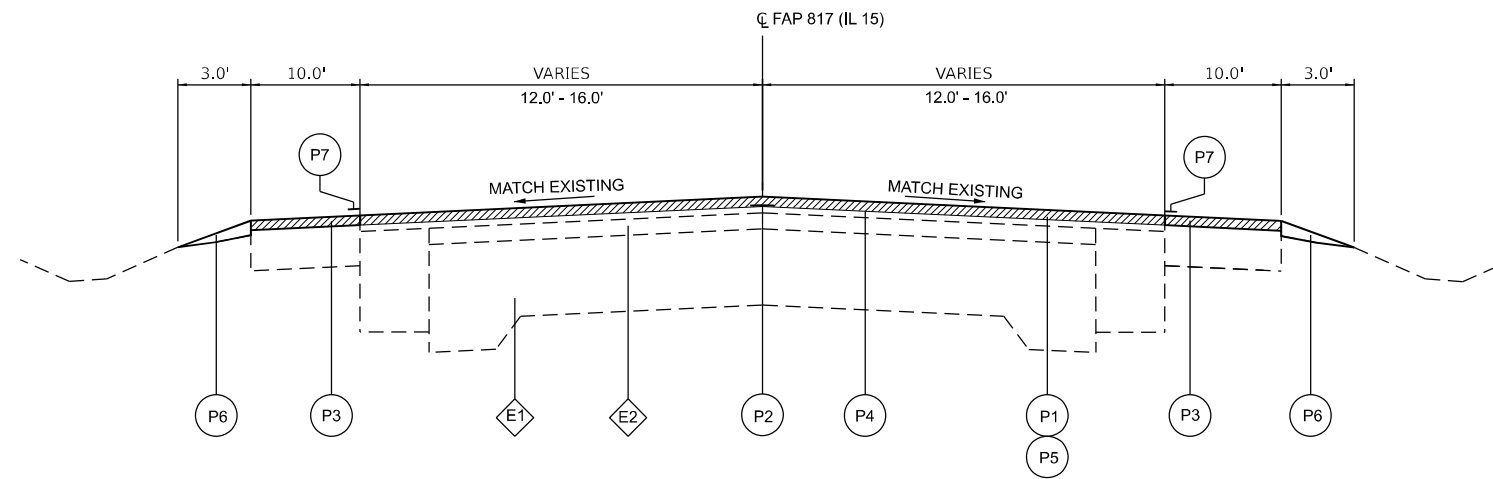


EXISTING TYPICAL SECTION

STA. 428+20.00 TO STA. 447+00.00



LONGITUDINAL JOINT SEALANT - DETAIL



PROPOSED TYPICAL SECTION

STA. 428+20.00 TO STA. 447+00.00

MODEL: Typical=3 [Sheet]
FILE NAME: H:\8249_PTB_199_0328249_090_IV09_IL_15 SMARTICAD_Sheets\8249\8249-shr-typical.dgn



USER NAME = evonderhaar	DESIGNED - EMV	REVISED -
PLOT SCALE = 0.16666833' / in.	DRAWN - EMV	REVISED -
PLOT DATE = 1/30/2024	CHECKED - BMR	REVISED -
	DATE - 1/31/24	REVISED -

**STATE OF ILLINOIS
DEPARTMENT OF TRANSPORTATION**

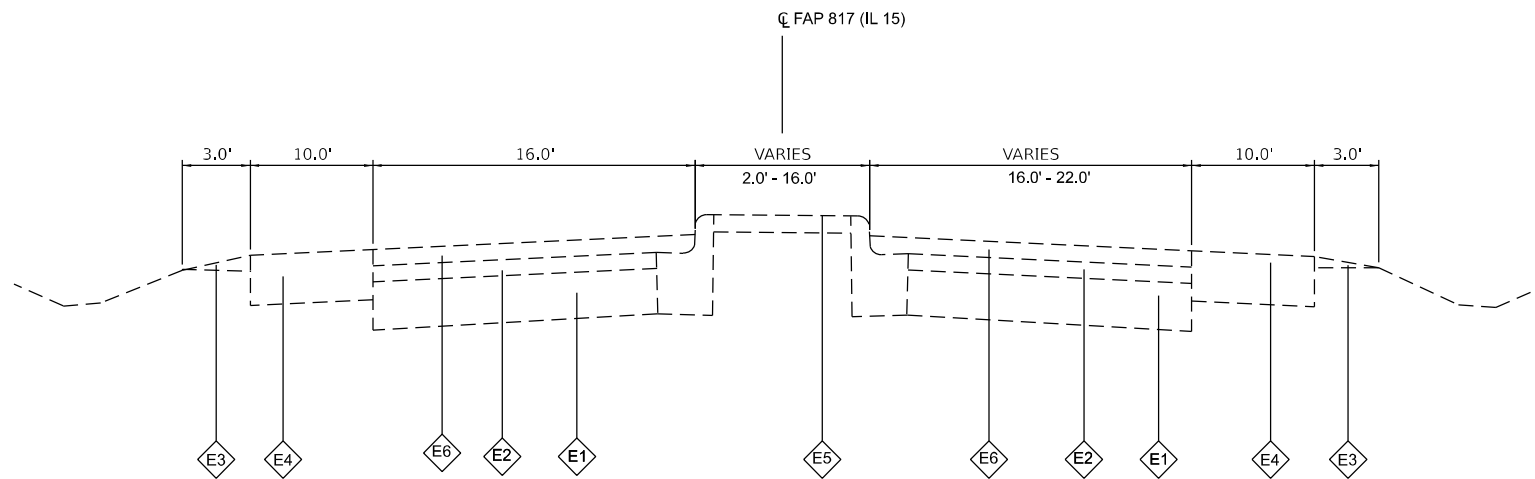
TYPICAL SECTIONS

SCALE: NTS SHEET 3 OF 5 SHEETS STA. TO STA.

F.A.P. RTE.	SECTION	COUNTY	TOTAL SHEETS	SHEET NO.
817	(6.9)RS-3,10-1RS-2	WASHINGTON	14	7
CONTRACT NO. 76T59				
ILLINOIS FED. AID PROJECT				

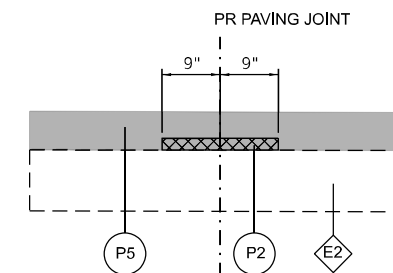
TYPICAL SECTION LEGEND

- ◊E1 EX CONCRETE PAVEMENT
- ◊E2 EX HMA PAVEMENT
- ◊E3 EX AGG SHLDS (VARIABLE THICKNESS)
- ◊E4 EX HMA SHLDS
- ◊E5 EX CONC MEDIAN
- ◊E6 EX HMA, 2"
- ◊E7 EX HMA WIDENING, 9"
- P1 PR HMA SURF REM, 1.50"
- P2 PR LONGITUDINAL JT SEALANT
- P3 PR HMA SHOULDER, 1.5"
- P4 PR BIT MAT (TACK COAT)
- P5 PR HMA SURF CSE, IL-9.5, MIX "C" 1.50"
- P6 PR AGG WEDGE SHLDR, TY B
- P7 PR SHOULDER RUMBLE STRIPS, 8"
- P8 PR \bar{C} RUMBLE STRIPS, 16"

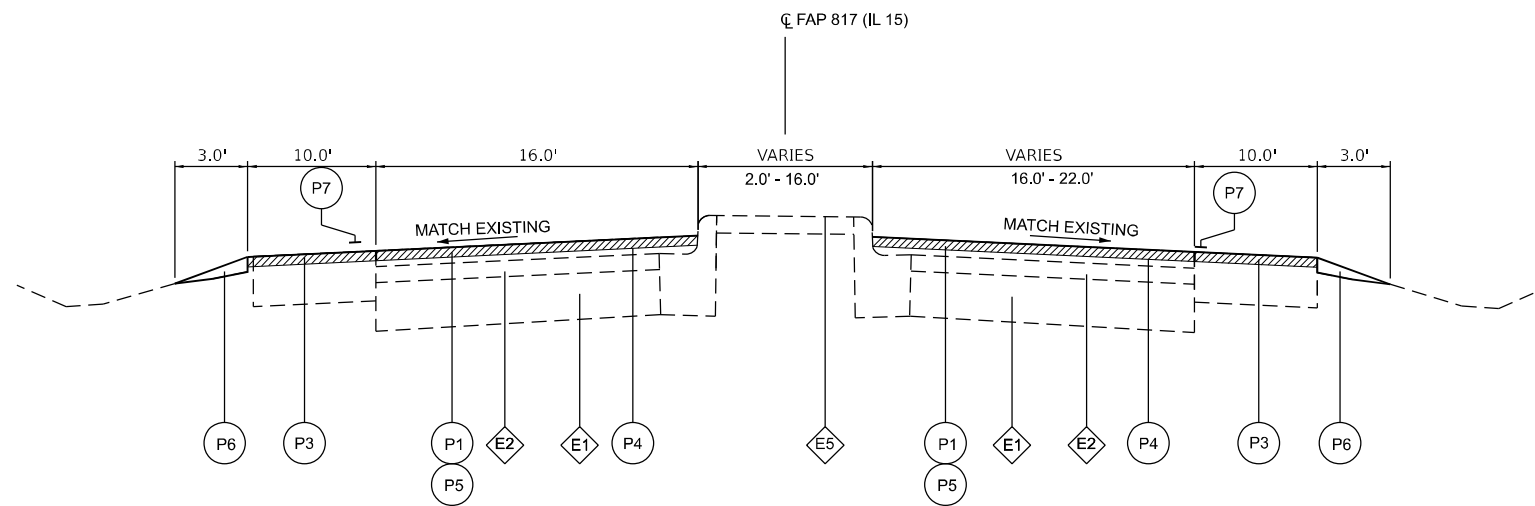


EXISTING TYPICAL SECTION

STA. 447+00.00 TO STA. 451+48.00



LONGITUDINAL JOINT SEALANT - DETAIL



PROPOSED TYPICAL SECTION

STA. 447+00.00 TO STA. 451+48.00

MODEL: Typical-4 [Sheet]
FILE NAME: H:\8249_PTB_09_0328249_090_W09_IL_15 SMARTCAD_Sheets\8249\8249-shr-typical.sgm



USER NAME = evonderhaar	DESIGNED - EMV	REVISED -
DRAWN - EMV	CHECKED - BMR	REVISED -
PLOT SCALE = 0.16666633' / in.	DATE - 1/31/24	REVISED -
PLOT DATE = 1/30/2024		

**STATE OF ILLINOIS
DEPARTMENT OF TRANSPORTATION**

TYPICAL SECTIONS

SCALE: NTS SHEET 4 OF 5 SHEETS STA. TO STA.

F.A.P. RTE.	SECTION	COUNTY	TOTAL SHEETS	SHEET NO.
817	(6.9)RS-3,10-1RS-2	WASHINGTON	14	8
CONTRACT NO. 76T59				
ILLINOIS FED. AID PROJECT				

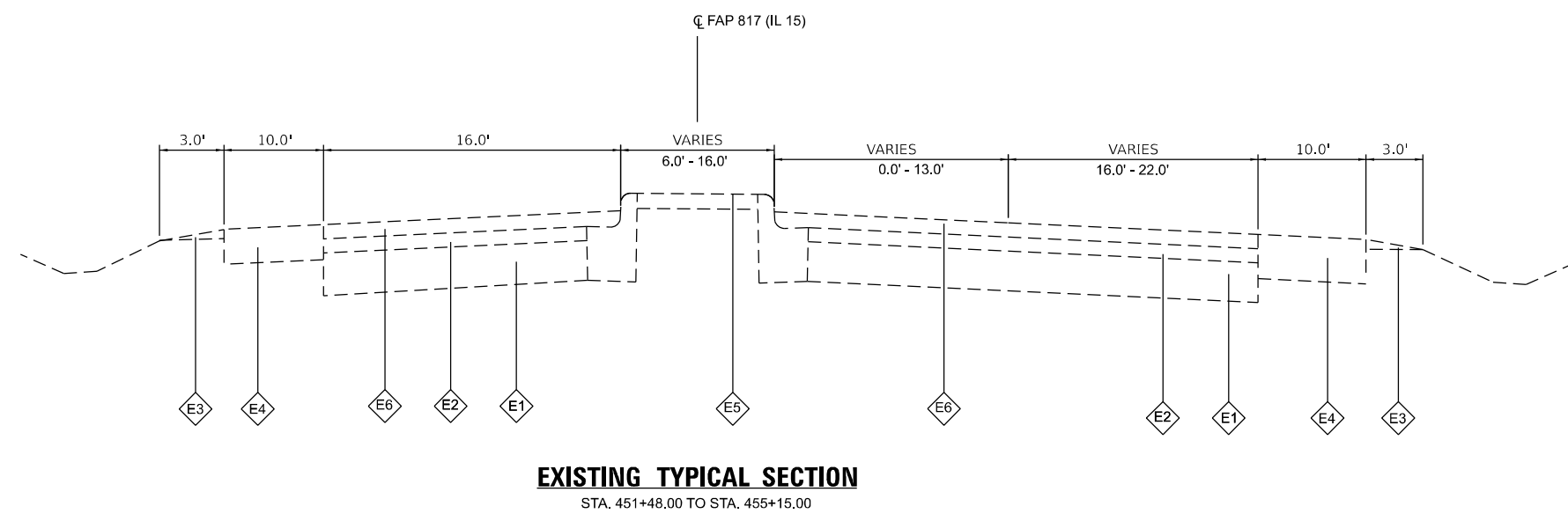
MODEL: Typical=5 (Sheet)
 FILE NAME: H:\8249_PTB_09_0328249_090_W09_IL15_SMARTICAD_Sheets\8249_PTB_09_0328249_090_W09_IL15_Smartical.dgn

TYPICAL SECTION LEGEND

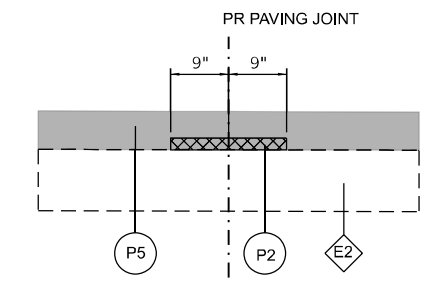
- ◊E1 EX CONCRETE PAVEMENT
- ◊E2 EX HMA PAVEMENT
- ◊E3 EX AGG SHLDS (VARIABLE THICKNESS)
- ◊E4 EX HMA SHLDS
- ◊E5 EX CONC MEDIAN
- ◊E6 EX HMA, 2"
- ◊E7 EX HMA WIDENING, 9"
- P1 PR HMA SURF REM, 1.50"
- P2 PR LONGITUDINAL JT SEALANT
- P3 PR HMA SHOULDER, 1.5"
- P4 PR BIT MAT (TACK COAT)
- P5 PR HMA SURF CSE, IL-9.5, MIX "C" 1.50"
- P6 PR AGG WEDGE SHLDR, TY B
- P7 PR SHOULDER RUMBLE STRIPS, 8"
- P8 PR \bar{C} RUMBLE STRIPS, 16"

TYPICAL SECTION NOTES

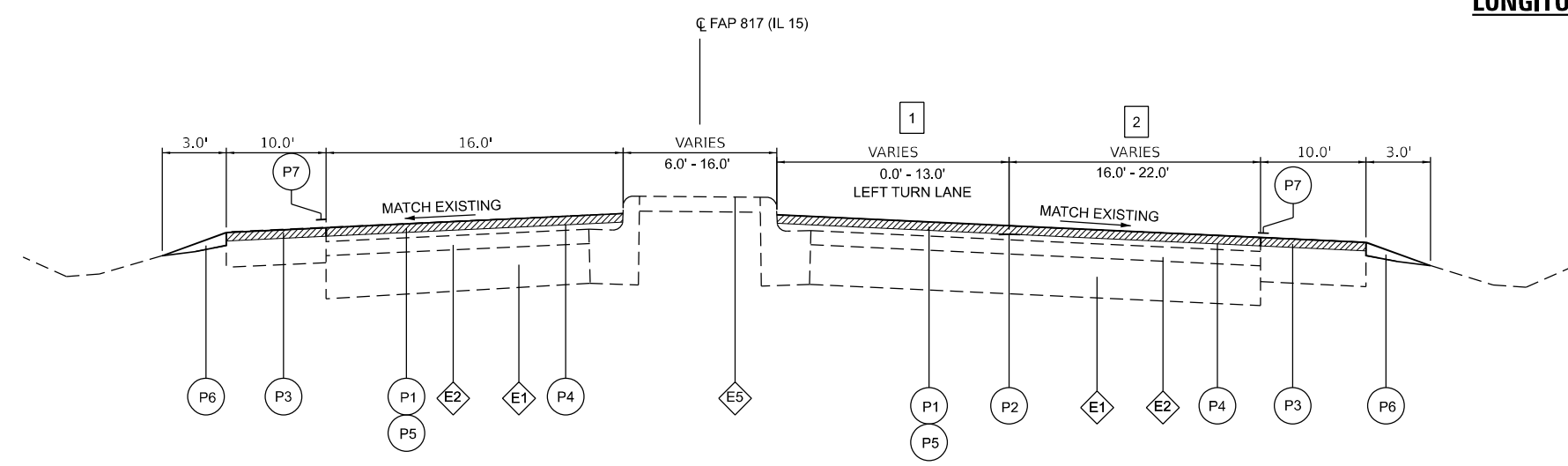
- 1 LEFT TURN LANE WIDTH VARIES 0' TO 13'
FROM STA. 451+48.00 TO STA. 455+15.00
- 2 THRU LANE WIDTH VARIES 16' TO 22'
FROM STA. 451+48.00 TO STA. 455+15.00



EXISTING TYPICAL SECTION
 STA. 451+48.00 TO STA. 455+15.00



LONGITUDINAL JOINT SEALANT - DETAIL



PROPOSED TYPICAL SECTION
 STA. 451+48.00 TO STA. 455+15.00



USER NAME = evonderhaar	DESIGNED - EMV	REVISED -
PLOT SCALE = 0.16666633' / in.	DRAWN - EMV	REVISED -
PLOT DATE = 1/30/2024	CHECKED - BMR	REVISED -
	DATE - 1/31/24	REVISED -

**STATE OF ILLINOIS
 DEPARTMENT OF TRANSPORTATION**

TYPICAL SECTIONS

SCALE: NTS SHEET 5 OF 5 SHEETS STA. TO STA.

F.A.P. RTE.	SECTION	COUNTY	TOTAL SHEETS	SHEET NO.
817	(6.9)RS-3,10-1RS-2	WASHINGTON	14	9
CONTRACT NO. 76T59				
ILLINOIS FED. AID PROJECT				

PAVEMENT SCHEDULE

STATION	STATION	BITUMINOUS MATERIALS (TACK COAT)	LONGITUDINAL JOINT SEALANT	TEMPORARY RAMP	HOT-MIX ASPHALT SURFACE COURSE, IL-9.5, MIX "C", N70	HOT-MIX ASPHALT SURFACE REMOVAL, 1 1/2"	AGGREGATE WEDGE SHOULDER, TYPE B	SHOULDER RUMBLE STRIPS, 8"	CENTER LINE RUMBLE STRIP, 16"	MATERIAL TRANSFER DEVICE	HOT-MIX ASPHALT SHOULDERS
		(POUND)	(FOOT)	(SQ YD)	(TON)	(SQ YD)	(TON)	(FOOT)	(FOOT)	(TON)	(TON)
27+00.00	119+58.61	11,141	9,184	141	2,057	24,759	432		543	2,057	
119+58.61	170+00.00	7,519	5,005	13	1,121	16,709	235	10,083	5,005	1,121	282
170+00.00	217+12.67	5,655	4,713		1,056	12,568	220		4,713	1,056	
217+12.67	221+05.86	590	393		88	1,311	18	787	393	88	22
221+05.86	234+63.30	1,603	1,335		299	3,562	63		1,335	299	
234+63.30	253+01.55	2,758	1,838	66	412	6,129	86	3,677	1,838	412	103
253+01.55	279+66.34	3,164	2,637	21	591	7,032	124		2,637	591	
279+66.34	310+68.58	4,620	3,080	16	690	10,268	145	6,205	3,080	690	172
310+68.58	428+00.00	14,044	11,703	72	2,622	31,210	548		11,703	2,622	
428+00.00	428+20.00	34	20	33	4	76	1	40	20	4	2
428+20.00	447+00.00	4,321	1,872		458	9,603	88	3,760		458	348
447+00.00	451+48.00	1,251	448		243	2,781	21	896		243	83
451+48.00	455+15.00	1,178	367	25	242	2,618	17	734		242	69
TOTAL		57,878	42,595	388	9,883	128,626	1,999	26,181	31,267	9,883	1,081

NOTES:
1. MAILBOX TURNOUTS ARE ASSUMED TO BE 3" THICK AND INCLUDED IN HOT-MIX ASPHALT SURFACE COURSE QUANTITY.

PAVEMENT MARKING SCHEDULE

STATION	STATION	SHORT TERM PAVEMENT MARKING	SHORT TERM PAVEMENT MARKING REMOVAL	THERMOPLASTIC PAVEMENT MARKING - LINE 6"					THERMOPLASTIC PAVEMENT MARKING LETTERS AND SYMBOLS	PAVEMENT MARKING REMOVAL - WATER BLASTING	PAINT PAVEMENT MARKING CURB	CURB REFLECTORS	RAISED REFLECTIVE PAVEMENT MARKER	RAISED REFLECTIVE MARKER REMOVAL
				SOLID WHITE		SOLID YELLOW		30' - 10' SKIP DASH YELLOW						
				EDGE LINE	LANE LINE	CL	LANE LINE	CL						
		(FOOT)	(SQ FT)	(FOOT)	(FOOT)	(FOOT)	(FOOT)	(SQ FT)	(FOOT)	(FOOT)	(EACH)	(EACH)	(EACH)	
27+00.00	119+58.61	1683	556	18517		12980		1219		16358			116	116
119+58.61	170+00.00	917	302	10083		6381		925		8695			75	75
170+00.00	217+12.67	857	283	9425		9819				9819			59	59
217+12.67	221+05.86	72	24	786		393				393			10	10
221+05.86	234+63.30	247	81	2715		1575		239		2265			17	17
234+63.30	253+01.55	334	110	3677		2418		315		3204			41	41
253+01.55	279+66.34	485	160	5330		3194		377		4450			33	33
279+66.34	310+68.58	565	186	6204		3800		601		5303			44	44
310+68.58	428+00.00	2134	704	23463		9239		2606		17654			147	147
428+00.00	428+20.00	4	1	40				10		25				
428+20.00	447+00.00	434	143	3760		508		470		2369			24	24
447+00.00	451+48.00	163	54	896						1162	80	36	6	6
451+48.00	455+15.00	173	57	734	215			734	46.8	888	40	12	12	12
TOTAL		8,065	2,662	85,630	215	50,308	2,161	6,762	46.8	72,585	80	76	583	583

NOTES:
1. IF REQUIRED, TEMPORARY PAVEMENT MARKING SHALL BE EXACTLY THE SAME AS THE PERMANENT PAVEMENT MARKINGS.
2. SHORT TERM PAVEMENT MARKING QUANTITIES CALCULATED FOR 2 APPLICATIONS AND REMOVAL OF 1 OF THESE APPLICATIONS.
3. REFLECTIVE PAVEMENT MARKERS:
TWO-WAY AMBER= 576
ONE-WAY CRYSTAL= 7
4. CURB REFLECTORS
AMBER = 76

MODEL: Schedules (Sheet)
FILE NAME: H:\8249_PTB_090_0328249_090_IV09_IL15\SMARTCAD_Sheets\0676159-sh-Schedules.dgn



USER NAME = evonderhaar
DESIGNED - EMV
DRAWN - EMV
CHECKED - BMR
DATE - 1/31/24

REVISED -
REVISED -
REVISED -
REVISED -

STATE OF ILLINOIS
DEPARTMENT OF TRANSPORTATION

SCHEDULE OF QUANTITIES

SCALE: NTS SHEET 1 OF 3 SHEETS STA. TO STA.

F.A.P. RTE.	SECTION	COUNTY	TOTAL SHEETS	SHEET NO.
817	(6.9)RS-3,10-1RS-2	WASHINGTON	14	10
CONTRACT NO. 76T59				
ILLINOIS FED. AID PROJECT				

SIGN SCHEDULE

STATION	OFFSET	MUTCD TYPE	DESCRIPTION	SIZE	SIGN PANEL TYPE 1	TELESCOPING STEEL SIGN SUPPORT
				(IN X IN)	(SQ FT)	(FOOT)
217+13	LT	W1-8	CHEVRON	18 X 24	3.00	15.0
218+44	LT	W1-8	CHEVRON	18 X 24	3.00	15.0
		W1-8	CHEVRON	18 X 24	3.00	
219+75	LT	W1-8	CHEVRON	18 X 24	3.00	15.0
		W1-8	CHEVRON	18 X 24	3.00	
221+06	LT	W1-8	CHEVRON	18 X 24	3.00	15.0
231+38	RT	W13-1P	45 MPH SPEED ADVISORY	18 X 18	2.25	15.0
234+63	RT	W1-8	CHEVRON	18 X 24	3.00	
236+11	RT	W1-8	CHEVRON	18 X 24	3.00	15.0
		W1-8	CHEVRON	18 X 24	3.00	
236+15	RT	W2-2	INTERSECTION	30 X 30	6.25	16.5
237+59	RT	W1-8	CHEVRON	18 X 24	3.00	15.0
		W1-8	CHEVRON	18 X 24	3.00	
239+07	RT	W1-8	CHEVRON	18 X 24	3.00	15.0
		W1-8	CHEVRON	18 X 24	3.00	
240+55	RT	W1-8	CHEVRON	18 X 24	3.00	15.0
242+65	LT	W2-2	INTERSECTION	30 X 30	6.25	16.5
243+80	LT	W1-2	CURVE	30 X 30	6.25	18.0
243+80	LT	W13-1P	45 MPH SPEED ADVISORY	18 X 18	2.25	
247+96	RT	W2-2	INTERSECTION	30 X 30	6.25	16.5
254+46	LT	W2-2	INTERSECTION	30 X 30	6.25	16.5
331+71	LT	W1-8	CHEVRON	18 X 24	3.00	15.0
333+27	LT	W1-8	CHEVRON	18 X 24	3.00	15.0
		W1-8	CHEVRON	18 X 24	3.00	
334+84	LT	W1-8	CHEVRON	18 X 24	3.00	15.0
		W1-8	CHEVRON	18 X 24	3.00	
336+41	LT	W1-8	CHEVRON	18 X 24	3.00	15.0
		W1-8	CHEVRON	18 X 24	3.00	
337+36	LT	W1-8	CHEVRON	18 X 24	3.00	15.0
348+11	RT	W1-8	CHEVRON	18 X 24	3.00	15.0
349+34	RT	W1-8	CHEVRON	18 X 24	3.00	15.0
		W1-8	CHEVRON	18 X 24	3.00	
350+92	RT	W1-8	CHEVRON	18 X 24	3.00	15.0
		W1-0	CHEVRON	10 X 24	3.00	
352+40	RT	W1-8	CHEVRON	18 X 24	3.00	15.0
		W1-8	CHEVRON	18 X 24	3.00	
353+81	RT	W1-8	CHEVRON	18 X 24	3.00	15.0
360+78	RT	W2-1	INTERSECTION	30 X 30	6.25	16.5
367+28	LT	W2-1	INTERSECTION	30 X 30	6.25	16.5
374+76	LI	W1-8	CHEVRON	18 X 24	3.00	15.0
375+16	RT	W2-2	INTERSECTION	30 X 30	6.25	16.5
		W1-8	CHEVRON	18 X 24	3.00	
376+77	LT	W1-8	CHEVRON	18 X 24	3.00	15.0
		W1-8	CHEVRON	18 X 24	3.00	
378+77	LT	W1-8	CHEVRON	18 X 24	3.00	15.0
		W1-8	CHEVRON	18 X 24	3.00	
380+78	LT	W1-8	CHEVRON	18 X 24	3.00	15.0
		W1-8	CHEVRON	18 X 24	3.00	
381+66	LT	W2-2	INTERSECTION	30 X 30	6.25	16.5
382+79	LT	W1-8	CHEVRON	18 X 24	3.00	15.0
400+92	RT	W1-8	CHEVRON	18 X 24	3.00	15.0
402+79	RT	W1-8	CHEVRON	18 X 24	3.00	15.0
		W1-8	CHEVRON	18 X 24	3.00	
404+66	RT	W1-8	CHEVRON	18 X 24	3.00	15.0
		W1-8	CHEVRON	18 X 24	3.00	
406+52	RT	W1-8	CHEVRON	18 X 24	3.00	15.0
424+96	RT	W2-2	INTERSECTION	30 X 30	6.25	16.5
431+46	LT	W2-2	INTERSECTION	30 X 30	6.25	16.5
SUBTOTAL					205.3	603.0
TOTAL					206	603

- NOTES:
1. SIGN PANEL AT STA. 231+38 TO BE PLACED ON EXISTING POST.

PAVEMENT PATCHING SCHEDULE

PATCH	STATION	LANE	LENGTH (FOOT)	WIDTH (FOOT)	CLASS B PATCHES, 11 INCH			SAW CUTS (FOOT)	DOWEL BARS 1" (EACH)	TIE BARS 3/4" (EACH)	WELDED WIRE REINFORCEMENT (SQ YD)
					TYPE II (SQ YD)	TYPE III (SQ YD)	TYPE IV (SQ YD)				
1	42+84	EB	10.0	12.0	13.3			56.0	20.0		
2	63+96	EB	8.0	12.0	10.7			52.0	20.0		
3	63+96	WB	8.0	12.0	10.7			52.0	20.0		
4	66+60	EB	10.0	12.0	13.3			56.0	20.0		
5	66+60	WB	10.0	12.0	13.3			56.0	20.0		
6	69+24	EB	8.0	12.0	10.7			52.0	20.0		
7	69+24	WB	8.0	12.0	10.7			52.0	20.0		
8	127+32	EB	12.0	12.0		16.0		60.0	20.0		16.0
9	127+32	WB	12.0	12.0		16.0		60.0	20.0		16.0
10	153+72	EB	8.0	12.0	10.7			52.0	20.0		
11	153+72	WB	8.0	12.0	10.7			52.0	20.0		
12	180+12	EB	8.0	12.0	10.7			52.0	20.0		
13	180+12	WB	12.0	12.0		16.0		60.0	20.0		16.0
14	201+24	EB	30.0	12.0			40.0	96.0	20.0	10.0	40.0
15	211+80	WB	6.0	12.0	8.0			48.0	20.0		
16	217+08	WB	8.0	12.0	10.7			52.0	20.0		
17	217+08	EB	12.0	12.0		16.0		60.0	20.0		16.0
18	227+64	EB	6.0	12.0	8.0			48.0	20.0		
19	227+64	WB	6.0	12.0	8.0			48.0	20.0		
20	269+88	EB	8.0	12.0	10.7			52.0	20.0		
21	269+88	WB	12.0	12.0		16.0		60.0	20.0		16.0
22	296+28	EB	8.0	12.0	10.7			52.0	20.0		
23	296+28	WB	8.0	12.0	10.7			52.0	20.0		
24	322+68	EB	6.0	12.0	8.0			48.0	20.0		
25	322+68	WB	6.0	12.0	8.0			48.0	20.0		
26	349+08	WB	8.0	12.0	10.7			52.0	20.0		
27	349+08	EB	12.0	12.0		16.0		60.0	20.0		16.0
28	370+20	EB	12.0	12.0		16.0		60.0	20.0		16.0
29	370+20	WB	12.0	12.0		16.0		60.0	20.0		16.0
30	417+72	EB	10.0	12.0	13.3			56.0	20.0		
31	417+72	WB	8.0	12.0	10.7			52.0	20.0		
32	433+56	EB	15.0	12.0		20.0		66.0	20.0		20.0
33	433+56	WB	15.0	12.0		20.0		66.0	20.0		20.0
34	434+62	EB	6.0	12.0	8.0			48.0	20.0		
35	434+62	WB	6.0	12.0	8.0			48.0	20.0		
36	436+20	EB	15.0	12.0		20.0		66.0	20.0		20.0
37	436+20	WB	15.0	12.0		20.0		66.0	20.0		20.0
38	441+48	EB	20.0	12.0			26.7	76.0	20.0	7.0	26.7
39	441+48	WB	20.0	12.0			26.7	76.0	20.0	7.0	26.7
40	449+40	WB	10.0	12.0	13.3			56.0	20.0		
41	449+40	WB	10.0	12.0	13.3			56.0	20.0		
TOTAL					275	208	94	2,340	820	24	302

MODEL: Schedules-1 [Sheet]
FILE NAME: H:\8249_PTB_199_0238249_090_W09_IL_15 SMARTCAD_Sheets\0676759-sh-Schedules.dgn



USER NAME = evonderhaar
PLOT SCALE = 0.16666633 / in.
PLOT DATE = 1/31/2024

DESIGNED - EMV
DRAWN - EMV
CHECKED - BMR
DATE - 1/31/24

REVISED -
REVISED -
REVISED -
REVISED -

**STATE OF ILLINOIS
DEPARTMENT OF TRANSPORTATION**

SCHEDULE OF QUANTITIES

SCALE: NTS SHEET 2 OF 3 SHEETS STA. TO STA.

F.A.P. RTE. 817	SECTION (6.9)RS-3,10-1RS-2	COUNTY WASHINGTON	TOTAL SHEETS 14	SHEET NO. 11
CONTRACT NO. 76T59				
ILLINOIS FED. AID PROJECT				

GUARDRAIL SCHEDULE

SN	CL STATION	QUADRANT	GUARDRAIL REMOVAL (FOOT)	STEEL PLATE BEAM GUARDRAIL, TYPE A, 6 FOOT POSTS (FOOT)	LONG-SPAN GUARDRAIL OVER CULVERT, 18 FT 9 IN SPAN (FOOT)	TRAFFIC BARRIER TERMINAL, TYPE 1 (SPECIAL) TANGENT (EACH)	TRAFFIC BARRIER TERMINAL, TYPE 6A (MODIFIED) (EACH)	GUARDRAIL REFLECTORS, TYPE A (EACH)	TERMINAL MARKER - DIRECT APPLIED (EACH)
095-0400	121+09.61	SW	102.0	14.5		1	1	2	1
		SE	102.0	14.5		1	1	2	1
		NE	96.0	8.5		1	1	2	1
		NW	150.0	62.5		1	1	2	1
095-2425	146+21.59	N	242.0	98.3	43.75	2		4	2
		S	305.0	161.3	43.75	2		4	2
095-0012	223+07.72	SW	125.0	37.5		1	1	3	1
		SE	115.0	27.5		1	1	3	1
		NE	115.0	27.5		1	1	3	1
		NW	102.0	14.5		1	1	2	1
095-0013	255+61.23	SW	115.0	27.5		1	1	3	1
		SE	65.0			1	1	2	1
		NE	115.0	27.5		1	1	3	1
		NW	115.0	27.5		1	1	3	1
095-0014	296+50.49	SW	102.0	14.5		1	1	2	1
		SE	102.0	14.5		1	1	2	1
		NE	115.0	27.5		1	1	3	1
		NW	102.0	14.5		1	1	2	1
095-0015	338+99.49	SW	115.0	27.5		1	1	3	1
		SE	105.0	17.5		1	1	2	1
		NE	115.0	27.5		1	1	3	1
		NW	115.0	27.5		1	1	3	1
TOTAL			2,735	720	88	24	20	58	24

MODEL: [Untitled (Sheet)]
FILE NAME: H:\8249_PTB_199_0328249_090_W09_IL_15_SMART\CAD_Sheets\ID676T59-sh-GuardrailSchedule.dgn



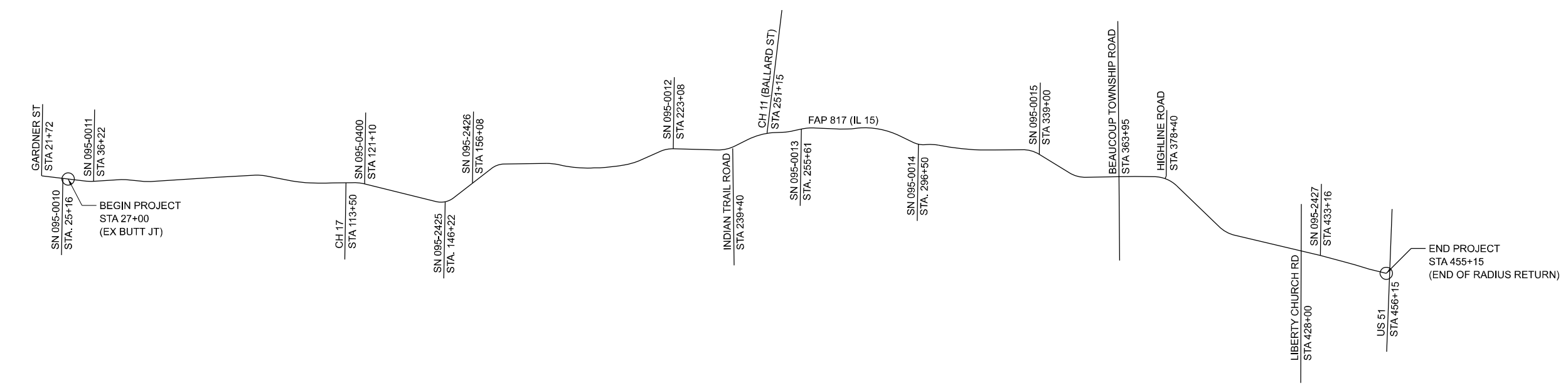
USER NAME = evonderhaar	DESIGNED -	REVISED -
PLOT SCALE = 0.16666633' / in.	DRAWN -	REVISED -
PLOT DATE = 1/30/2024	CHECKED -	REVISED -
	DATE -	REVISED -

**STATE OF ILLINOIS
DEPARTMENT OF TRANSPORTATION**

SCHEDULE OF QUANTITIES

SCALE: SHEET 3 OF 3 SHEETS STA. TO STA.

F.A.P. RTE.	SECTION	COUNTY	TOTAL SHEETS	SHEET NO.
817	(6.9)RS-3,10-1RS-2	WASHINGTON	14	12
CONTRACT NO. 76T59				
ILLINOIS FED. AID PROJECT				



EX CURVE IL15_1 PI STA = 33+46.17 Δ = 10°44'07" (LT) D = 03°34'52" R = 1,600.00' T = 150.33' L = 299.78' E = 7.05' e = _____ PC STA = 31+95.84 PT STA = 34+95.62	EX CURVE IL15_2 PI STA = 44+30.50 Δ = 09°37'31" (RT) D = 03°10'59" R = 1,800.00' T = 151.55' L = 302.39' E = 6.37' e = _____ PC STA = 42+78.95 PT STA = 45+81.34	EX CURVE IL15_3 PI STA = 51+78.45 Δ = 09°36'03" (LT) D = 02°17'31" R = 2,500.00' T = 209.95' L = 418.92' E = 8.80' e = _____ PC STA = 49+68.50 PT STA = 53+87.41	EX CURVE IL15_4 PI STA = 86+79.62 Δ = 14°00'41" (RT) D = 03°22'13" R = 1,700.00' T = 208.90' L = 415.73' E = 12.79' e = _____ PC STA = 84+70.72 PT STA = 88+86.44	EX CURVE IL15_5 PI STA = 99+72.61 Δ = 08°56'51" (LT) D = 01°30'28" R = 3,800.00' T = 297.31' L = 593.42' E = 11.61' e = _____ PC STA = 96+75.29 PT STA = 102+68.71	EX CURVE IL15_6 PI STA = 117+62.54 Δ = 15°03'56" (RT) D = 03°49'11" R = 1,500.00' T = 198.35' L = 394.42' E = 13.06' e = _____ PC STA = 115+64.19 PT STA = 119+58.61	EX CURVE IL15_7 PI STA = 145+44.70 Δ = 51°39'56" (LT) D = 09°14'29" R = 620.00' T = 300.16' L = 559.08' E = 68.84' e = _____ PC STA = 142+44.54 PT STA = 148+03.62	EX CURVE IL15_8 PI STA = 165+16.77 Δ = 36°54'04" (RT) D = 08°57'09" R = 640.00' T = 213.53' L = 412.19' E = 34.68' e = _____ PC STA = 163+03.25 PT STA = 167+15.44	EX CURVE IL15_9 PI STA = 182+27.09 Δ = 12°37'19" (RT) D = 03°34'52" R = 1,600.00' T = 176.95' L = 352.47' E = 9.76' e = _____ PC STA = 180+50.14 PT STA = 184+02.61	EX CURVE IL15_10 PI STA = 190+07.25 Δ = 13°16'35" (LT) D = 01°30'28" R = 3,800.00' T = 442.24' L = 880.52' E = 25.65' e = _____ PC STA = 185+65.01 PT STA = 194+45.53	EX CURVE IL15_11 PI STA = 200+99.68 Δ = 06°42'47" (LT) D = 00°52'53" R = 6,500.00' T = 381.22' L = 761.56' E = 11.17' e = _____ PC STA = 197+18.46 PT STA = 204+80.02	EX CURVE IL15_12 PI STA = 207+36.83 Δ = 13°56'38" (LT) D = 02°43'42" R = 2,100.00' T = 256.81' L = 511.07' E = 15.64' e = _____ PC STA = 204+80.02 PT STA = 209+91.09
EX CURVE IL15_13 PI STA = 219+12.46 Δ = 25°01'52" (RT) D = 06°21'58" R = 900.00' T = 199.78' L = 393.19' E = 21.91' e = _____ PC STA = 217+12.67 PT STA = 221+05.86	EX CURVE IL15_14 PI STA = 237+65.13 Δ = 28°14'12" (LT) D = 04°46'29" R = 1,200.00' T = 301.83' L = 591.39' E = 37.38' e = _____ PC STA = 234+63.30 PT STA = 240+54.69	EX CURVE IL15_15 PI STA = 249+00.72 Δ = 23°17'32" (RT) D = 02°51'53" R = 2,000.00' T = 412.22' L = 813.06' E = 42.04' e = _____ PC STA = 244+88.50 PT STA = 253+01.55	EX CURVE IL15_16 PI STA = 257+81.80 Δ = 08°42'33" (LT) D = 02°36'16" R = 2,200.00' T = 167.53' L = 334.41' E = 6.37' e = _____ PC STA = 256+14.28 PT STA = 259+48.68	EX CURVE IL15_17 PI STA = 264+13.96 Δ = 14°48'14" (RT) D = 03°22'13" R = 1,700.00' T = 220.85' L = 439.24' E = 14.29' e = _____ PC STA = 261+93.11 PT STA = 266+32.35	EX CURVE IL15_18 PI STA = 275+08.19 Δ = 07°22'21" (LT) D = 01°28'09" R = 3,900.00' T = 251.26' L = 501.83' E = 8.09' e = _____ PC STA = 272+56.92 PT STA = 277+58.75	EX CURVE IL15_19 PI STA = 286+48.28 Δ = 30°30'57" (RT) D = 02°17'31" R = 2,500.00' T = 681.95' L = 1331.50' E = 91.34' e = _____ PC STA = 279+66.34 PT STA = 292+97.84	EX CURVE IL15_20 PI STA = 299+38.47 Δ = 28°38'31" (LT) D = 08°11'06" R = 700.00' T = 178.70' L = 349.93' E = 22.45' e = _____ PC STA = 297+59.77 PT STA = 301+09.69	EX CURVE IL15_21 PI STA = 303+84.18 Δ = 12°22'36" (RT) D = 03°34'52" R = 1,600.00' T = 173.49' L = 345.62' E = 9.38' e = _____ PC STA = 302+10.70 PT STA = 305+56.32	EX CURVE IL15_22 PI STA = 314+67.13 Δ = 07°36'03" (LT) D = 00°57'18" R = 6,000.00' T = 398.56' L = 795.95' E = 13.22' e = _____ PC STA = 310+68.58 PT STA = 318+64.52	EX CURVE IL15_23 PI STA = 334+61.54 Δ = 32°21'42" (RT) D = 05°43'46" R = 1,000.00' T = 290.16' L = 564.82' E = 41.25' e = _____ PC STA = 331+71.37 PT STA = 337+36.19	EX CURVE IL15_24 PI STA = 351+04.10 Δ = 32°41'33" (LT) D = 05°43'46" R = 1,000.00' T = 293.30' L = 570.59' E = 42.12' e = _____ PC STA = 348+10.81 PT STA = 353+81.40
		EX CURVE IL15_25 PI STA = 378+98.15 Δ = 43°46'59" (RT) D = 05°27'24" R = 1,050.00' T = 421.92' L = 802.36' E = 81.60' e = _____ PC STA = 374+76.24 PT STA = 382+78.60	EX CURVE IL15_26 PI STA = 403+79.11 Δ = 30°34'04" (LT) D = 05°27'24" R = 1,050.00' T = 286.93' L = 560.18' E = 38.50' e = _____ PC STA = 400+92.18 PT STA = 406+52.37	EX CURVE IL15_27 PI STA = 501+65.49 Δ = 08°21'56" (LT) D = 00°20'13" R = 17,000.00' T = 1,243.28' L = 2482.14' E = 45.40' e = _____ PC STA = 489+22.21 PT STA = 514+04.35	EX CURVE IL15_28 PI STA = 534+30.35 Δ = 17°56'09" (RT) D = 01°01'23" R = 5,600.00' T = 883.74' L = 1753.03' E = 69.30' e = _____ PC STA = 525+46.60 PT STA = 542+99.64	EX CURVE IL15_29 PI STA = 562+96.13 Δ = 02°35'34" (RT) D = 01°08'45" R = 5,000.00' T = 113.15' L = 226.27' E = 1.28' e = _____ PC STA = 561+82.98 PT STA = 564+09.25	EX CURVE IL15_30 PI STA = 567+34.96 Δ = 03°20'15" (LT) D = 01°08'45" R = 5,000.00' T = 145.67' L = 291.26' E = 2.12' e = _____ PC STA = 565+89.29 PT STA = 568+80.55	EX CURVE IL15_31 PI STA = 588+95.38 Δ = 15°12'07" (RT) D = 03°49'11" R = 1,500.00' T = 200.17' L = 397.98' E = 13.30' e = _____ PC STA = 586+95.21 PT STA = 590+93.20			

MODEL: Plan (Sheet)
 FILE NAME: H:\8249_PTB_099_0328249_090_IV09_IL_15_SMARTICAD_Sheets\0676159-shr-plan.dgn



USER NAME = evonderhaar	DESIGNED - EMV	REVISD -
PLOT SCALE = 0.16666633' / in.	DRAWN - EMV	REVISD -
PLOT DATE = 1/26/2024	CHECKED - BMR	REVISD -
	DATE - 1/31/24	REVISD -

**STATE OF ILLINOIS
DEPARTMENT OF TRANSPORTATION**

LOCATION MAP

SCALE: NTS SHEET 1 OF 1 SHEETS STA. TO STA.

F.A.P. RTE.	SECTION	COUNTY	TOTAL SHEETS	SHEET NO.
817	(6.9)RS-3,10-1RS-2	WASHINGTON	14	13
CONTRACT NO. 76T59				
ILLINOIS FED. AID PROJECT				

