

STATE OF ILLINOIS
DEPARTMENT OF TRANSPORTATION

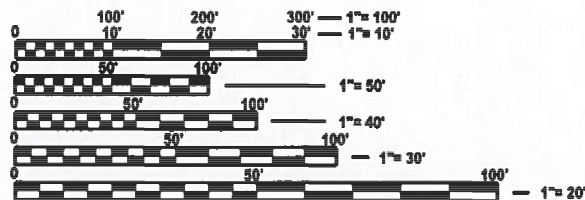
F.A. RTE.	SECTION	COUNTY	TOTAL SHEETS	SHEET NO.
VAR.	DIST 8 TS MODERNIZATION 2024-3	MADISON & ST. CLAIR	17	1
		ILLINOIS	CONTRACT NO. 76T53	

FOR INDEX OF SHEETS, SEE SHEET NO. 2

PROPOSED HIGHWAY PLANS

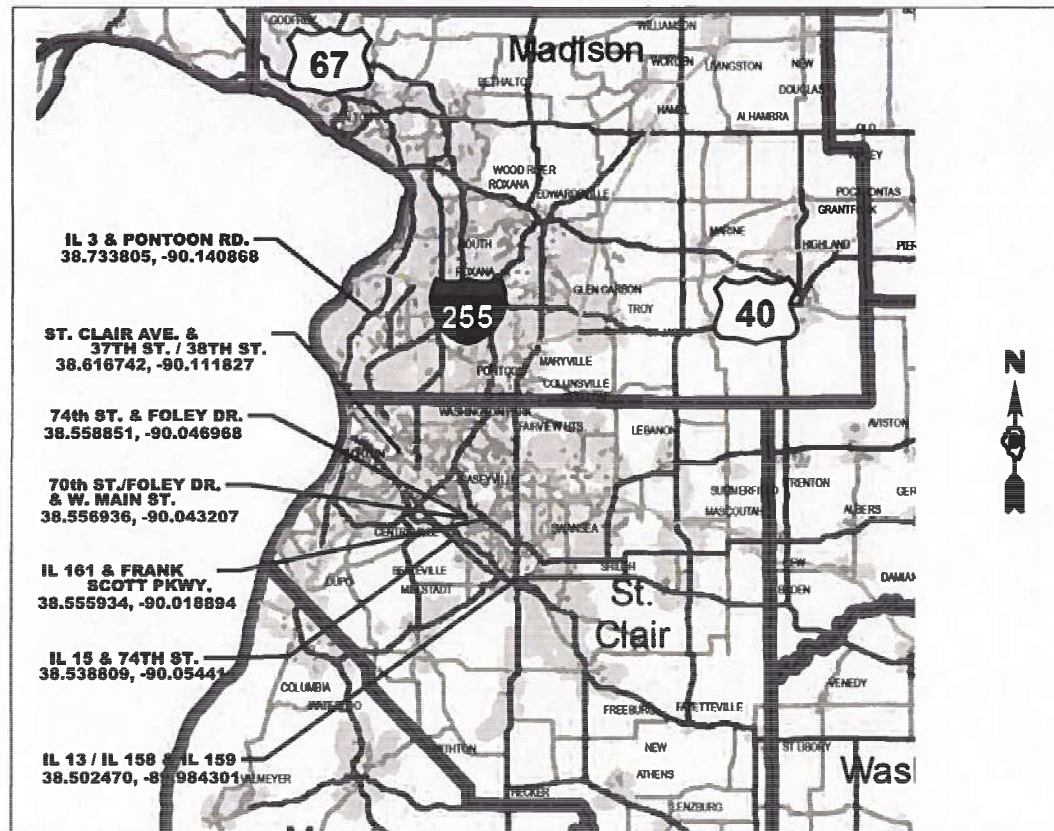
VARIOUS ROUTES
SECTION : DIST 8 TS MODERNIZATION 2024-3
CABINET REPLACEMENT
TRAFFIC SIGNAL MODERNIZATION
COUNTIES: MADISON & ST. CLAIR

C-98-058-24



FULL SIZE PLANS HAVE BEEN PREPARED USING STANDARD ENGINEERING SCALES. REDUCED SIZED PLANS WILL NOT CONFORM TO STANDARD SCALES. IN MAKING MEASUREMENTS ON REDUCED PLANS, THE ABOVE SCALES MAY BE USED.

J.U.L.I.E.
JOINT UTILITY LOCATION INFORMATION FOR EXCAVATION
1-800-892-0123
OR 811



PROJECT ENGINEER: CHERYL KEPLAR
PROJECT MANAGER: RICHARD BARBEE

CONTRACT NO. 76T53

STATE OF ILLINOIS
DEPARTMENT OF TRANSPORTATION

SUBMITTED February 6, 2024
Kirsta Blouin
REGIONAL ENGINEER

March 22, 2024 [Signature]
ENGINEER OF DESIGN AND ENVIRONMENT

March 22, 2024 [Signature]
DIRECTOR OF HIGHWAYS PROJECT IMPLEMENTATION

PRINTED BY THE AUTHORITY
OF THE STATE OF ILLINOIS

INDEX OF SHEETS

SHT NO.	DESCRIPTION
1	COVER SHEET
2	INDEX SHEET, HIGHWAY STANDARDS, COMMITMENTS, AND GENERAL NOTES
3	SUMMARY OF QUANTITIES
TRAFFIC SIGNAL PLANS	
4-5	70th ST. / FOLEY DR. AT W. MAIN ST.
6-7	74th ST. AT FOLEY DR.
8-9	IL 15 AT 74th ST.
10-11	IL 13 / 158 AT IL 159
12-13	IL 3 AT PONTOON RD.
14-15	ST. CLAIR AVE. & 37TH ST. / 38TH ST.
16-17	IL 161 & FRANK SCOTT PKWY.

COMMITMENTS

NONE

HIGHWAY STANDARDS

000001-08	STANDARD SYMBOLS, ABBREVIATIONS AND PATTERNS
001006	DECIMAL OF AN INCH AND OF A FOOT
701001-02	OFF-ROAD OPERATIONS, 2L, 2W, MORE THAN 15' (4.5 M) AWAY
701006-05	OFF- ROAD OPERATIONS, 2L, 2W, 15' (4.5 M) TO 24" (600 MM) FROM PAVEMENT EDGE
701101-05	OFF- ROAD OPERATIONS, MULTILANE, 15' (4.5 M) TO 24" (600 MM) FROM PAVEMENT EDGE
701106-02	OFF- ROAD OPERATIONS, MULTILANE, MORE THAN 15' (4.5 M) AWAY
701422-10	LANE CLOSURE, MULTILANE, FOR SPEEDS ≥ 45 MPH TO 55 MPH
701601-09	URBAN LANE CLOSURE, MULTILANE, 1W OR 2W WITH NONTRAVERSABLE MEDIAN
701602-10	URBAN LANE CLOSURE, MULTILANE, 2W WITH BIDIRECTIONAL LEFT TURN LANE
701701-10	URBAN LANE CLOSURE, MULTILANE INTERSECTION
701901-09	TRAFFIC CONTROL DEVICES
857001-01	STANDARD PHASE DESIGNATION DIAGRAMS AND PAHSE SEQUENCES
862001-01	UNINTERRUPTABLE POWER SUPPLY (UPS)
873001-02	TRAFFIC SIGNAL GROUNDING & BONDING
880006-01	TRAFFIC SIGNAL MOUNTING DETAILS

GENERAL NOTES

- UTILITIES KNOWN TO HAVE FACILITIES WITHIN THE PROJECT AREA:
AMEREN ILLINOIS
AT&T ILLINOIS
CITY OF BELLEVILLE
BUCKEYE PARTNERS L.P. -WOOD RIVER PIPELINE
CHARTER COMMUNICATIONS, INC.
CLEARWAVE COMMUNICATIONS, INC.
CLEARWAVE FIBER LLC
CITY OF EAST ST. LOUIS
EVERSTREAM GLC HOLDING COMPANY LLC
CITY OF GRANITE CITY
ILLINOIS AMERICAN WATER COMPANY
LEVEL 3 COMMUNICATIONS, LLC
VERIZON BUSINESS
METRO EAST SANITARY DISTRICT
NEWWAVE COMMUNICATIONS
ST. CLAIR COUNTY
VILLAGE OF WASHINGTON PARK
WINDSTREAM KDL, INC.
- NO SURVEY WAS PERFORMED FOR THIS PROJECT AND THE PLANS WERE CREATED USING AERIAL IMAGERY AND FIELD MEASUREMENTS.
- THE RESIDENT ENGINEER SHALL VERIFY THE EXISTENCE OF HIGHWAY LIGHTING, INTELLIGENT TRANSPORTATION SYSTEMS (I.T.S.) UTILITIES, AND/OR ELECTRICAL CABLES ASSOCIATED WITH TRAFFIC SIGNALS WITHIN THE PROJECT LIMITS. IF ANY OF THESE EXIST WITHIN THE PROJECT LIMITS, AND IF THESE ITEMS REQUIRE LOCATING, THE CONTRACTOR SHALL BE DIRECTED TO DO SO ACCORDING TO SECTION 803 OF THE STANDARD SPECIFICATIONS. THIS WORK SHALL BE PAID FOR ACCORDING TO ARTICLE 109.04 OF THE STANDARD SPECIFICATIONS.
- THE DEPARTMENT STRONGLY ENCOURAGES THE PRIME CONTRACTOR AND THEIR APPROVED SUB-CONTRACTORS TO HIRE MINORITY, WOMEN AND DISADVANTAGED INDIVIDUALS FROM ITS FEDERALLY FUNDED HIGHWAY CONSTRUCTION CAREERS TRAINING PROGRAM (HCCTP) TO HELP MEET WORKFORCE AND TRAINEE GOALS. THIS PROGRAM IS TRAINING MINORITIES, WOMEN AND DISADVANTAGED INDIVIDUALS IN HIGHWAY CONSTRUCTION-RELATED SKILLS, E.G., MATH FOR THE TRADES, JOB READINESS, TECHNICAL SKILLS COURSEWORK (CARPENTRY, CONCRETE FLATWORK, BLUEPRINT READING, SITE PLANS, SITE WORK, TOOLS USE, ETC.) AND OSHA 10 HOUR CERTIFICATION, TO PREPARE THEM FOR A CAREER IN THE HIGHWAY CONSTRUCTION TRADES. GRADUATES ARE WELL-TRAINED AND READY TO BECOME PRODUCTIVE ENTRY-LEVEL CONSTRUCTION WORKERS. CONTACT THE DISTRICT 8 EEO OFFICE AT 618-346-3360 AND/OR THE HCCTP COORDINATOR AT 618-874-6528 TO LEARN MORE ABOUT THE PROGRAM AND FOR ASSISTANCE IN MEETING WORKFORCE AND TRAINEE GOALS.
- IT SHALL BE THE CONTRACTOR'S RESPONSIBILITY TO VERIFY ALL DIMENSIONS AND CONDITIONS EXISTING IN THE FIELD PRIOR TO ORDERING MATERIALS AND BEGINNING CONSTRUCTION.
- THE ILLINOIS DEPARTMENT SHALL BE NOTIFIED AT LEAST 72 HOURS PRIOR TO REPLACING OF AND TURNING ON THE CONTROLLER UNIT.
- FULL-ACTUCATED CONTROLLER AND TYPE IV CABINET SHALL INCLUDE VEHICLE DETECTOR AMPS AND AN INTERSECTION MONITOR.
- IT SHALL BE THE CONTRACTOR'S RESPONSIBILITY TO MAINTAIN THE EXISTING TRAFFIC SIGNAL INSTALLATION DURING THE WORK.

REV. - MS

MODEL - General Notes (Sheet)
FILE NAME - c:\pwworking\cdaniel.hopkins@illinois.gov\40837096\08167153-sht-SOQ.dgn

USER NAME = daniel.hopkins	DESIGNED -	REVISED -
	DRAWN -	REVISED -
PLOT SCALE = \$\$SCALE\$	CHECKED -	REVISED -
PLOT DATE = 2/6/2024	DATE -	REVISED -

STATE OF ILLINOIS
DEPARTMENT OF TRANSPORTATION

INDEX OF SHEETS, HIGHWAY STANDARDS,
COMMITMENTS, AND GENERAL NOTES

SCALE: SHEET OF SHEETS STA. TO STA.

F.A. RTE.	SECTION	COUNTY	TOTAL SHEETS	SHEET NO.
VAR.	DIST 8 TS MODERNIZATION 2024-3	MADISON & ST. CLAIR	17	2
			CONTRACT NO. 76T53	
ILLINOIS FED. AID PROJECT				

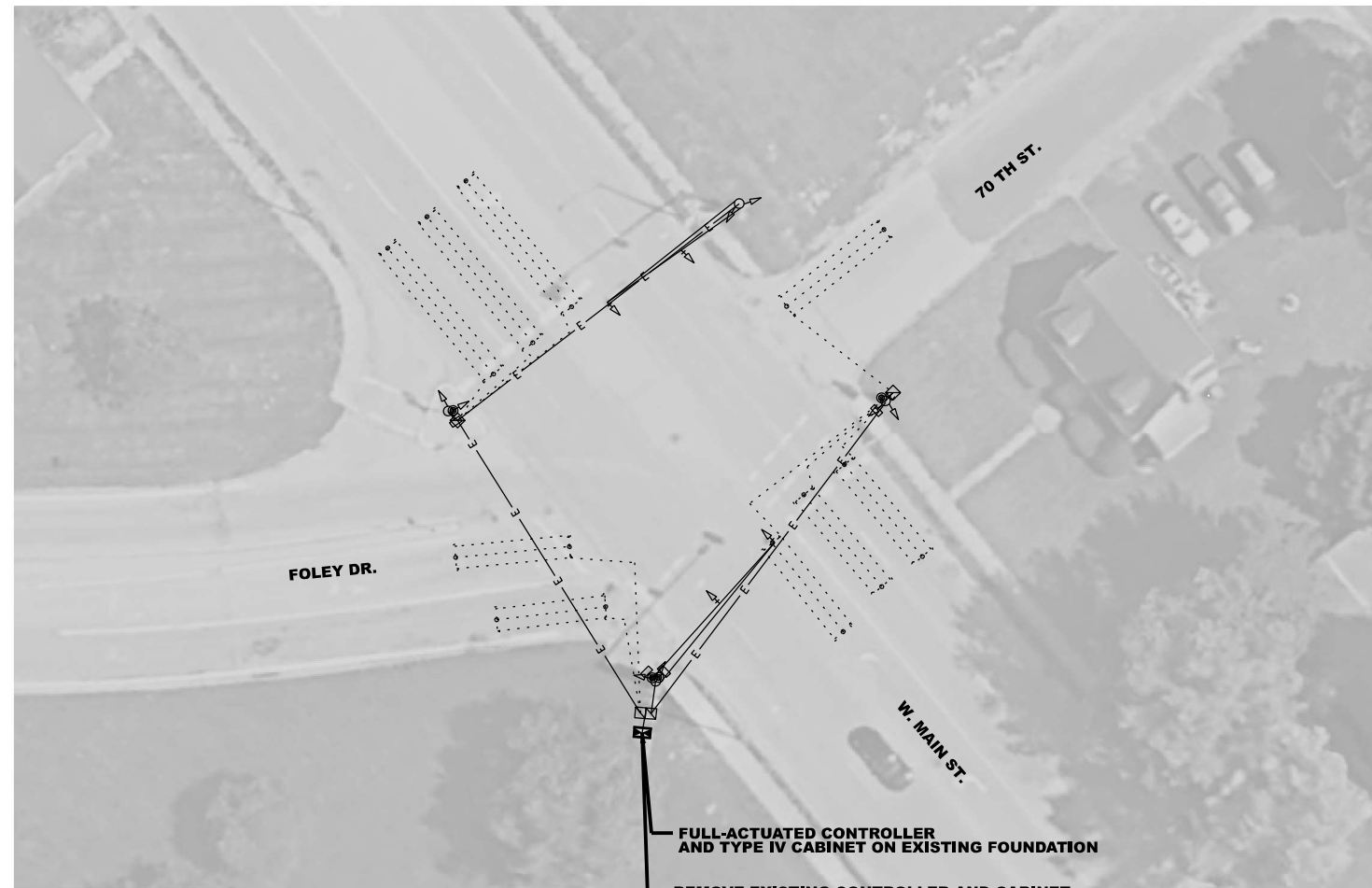
100% STATE

CODE NO.	ITEM	UNIT	TOTAL QUANTITY	CONSTRUCTION CODE	
				Madison County	St. Clair County
				TRAFFIC SIGNALS 0021 URBAN	TRAFFIC SIGNALS 0021 URBAN
67100100	MOBILIZATION	L SUM	1	0.14	0.86
70102630	TRAFFIC CONTROL AND PROTECTION, STANDARD 701601	L SUM	1	0	1
70102632	TRAFFIC CONTROL AND PROTECTION, STANDARD 701602	L SUM	1	0.14	0.86
70102635	TRAFFIC CONTROL AND PROTECTION, STANDARD 701701	L SUM	1	0.14	0.86
85000200	MAINTENANCE OF EXISTING TRAFFIC SIGNAL INSTALLATION	EACH	7	1	6
85700200	FULL-ACTUATED CONTROLLER AND TYPE IV CABINET	EACH	7	1	6
86200300	UNINTERRUPTABLE POWER SUPPLY, EXTENDED	EACH	2	1	1
88500100	INDUCTIVE LOOP DETECTOR	EACH	88	16	72
89502375	REMOVE EXISTING TRAFFIC SIGNAL EQUIPMENT	EACH	7	1	6
X0324248	DETECTOR RACK	EACH	1	0	1
X8950105	REMOVE EXISTING TRAFFIC CONTROLLER AND CABINET	EACH	7	1	6

MODEL: SQO (Sheet)
FILE NAME: c:\p\work\pawford\daniel_hopkins@illinois.gov\037096\0876153-eh-SQO.dgn

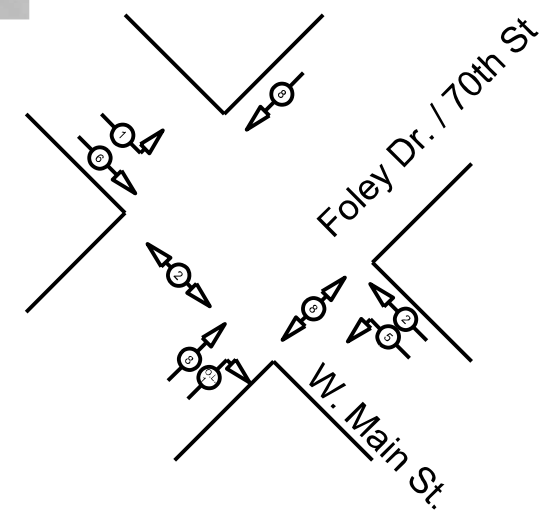
REV. - MS

USER NAME = daniel_hopkins	DESIGNED -	REVISED -	STATE OF ILLINOIS DEPARTMENT OF TRANSPORTATION	SUMMARY OF QUANTITIES			F.A. RTE.	SECTION	COUNTY	TOTAL SHEETS	SHEET NO.			
DRAWN -	REVISIED -			SCALE:	SHEET	OF	SHEETS	STA.	TO STA.	VAR.	DIST 8 TS MODERNIZATION 2024-3	MADISON & ST. CLAIR	17	3
PLOT SCALE = \$\$CALES	CHECKED -	REVISED -		CONTRACT NO. 76T53										
PLOT DATE = 2/6/2024	DATE -	REVISED -		ILLINOIS FED. AID PROJECT										



EXISTING SEQUENCE OF OPERATION						
PHASE	1	O.L. 1	2	5	6	8
MOVEMENT						
	EB LT	NB RT	WB	WBLT	EB	NB & SB
CONCURRENT MOVEMENT PERMITTED	O.L. 1 5 & 8	1 & 5	6	1 & O.L. 1	2	NONE

* PEDSTRIAN MOVEMENT ON ACTUATION ONLY
 OVERLAP 1 (O.L. 1) SHALL OPERATE WITH PHASE 5
 THE GREEN ARROW (RIGHT) AND YELLOW ARROW (RIGHT) FOR
 S 70th ST. SHALL NOT BE DISPLAYED DURING PHASE 6 GREEN.
 WHEN "PHASE NEXT" INCLUDES PHASE 5, THE GREEN ARROW
 (RIGHT) FOR S 70th ST SHALL BE DISPLAYED SIMULTANEOUSLY
 WITH THE CIRCULAR YELLOW FOR PHASE 6
 OVERLAP 1 SHALL TERMINATE CONCURRENTLY WITH PHASE 5
 USING A YELLOW ARROW (RIGHT)



MODEL: 70th St., Foley Dr. and West Main St. (Sheet)
 FILE NAME: c:\p\work\wtdaniel.hopkins@illinois.gov\0837096\0876153-sh1-plan.dgn

USER NAME = daniel.hopkins	DESIGNED -	REVISED -
	DRAWN -	REVISED -
PLOT SCALE = \$SCALE\$	CHECKED -	REVISED -
PLOT DATE = 2/6/2024	DATE -	REVISED -

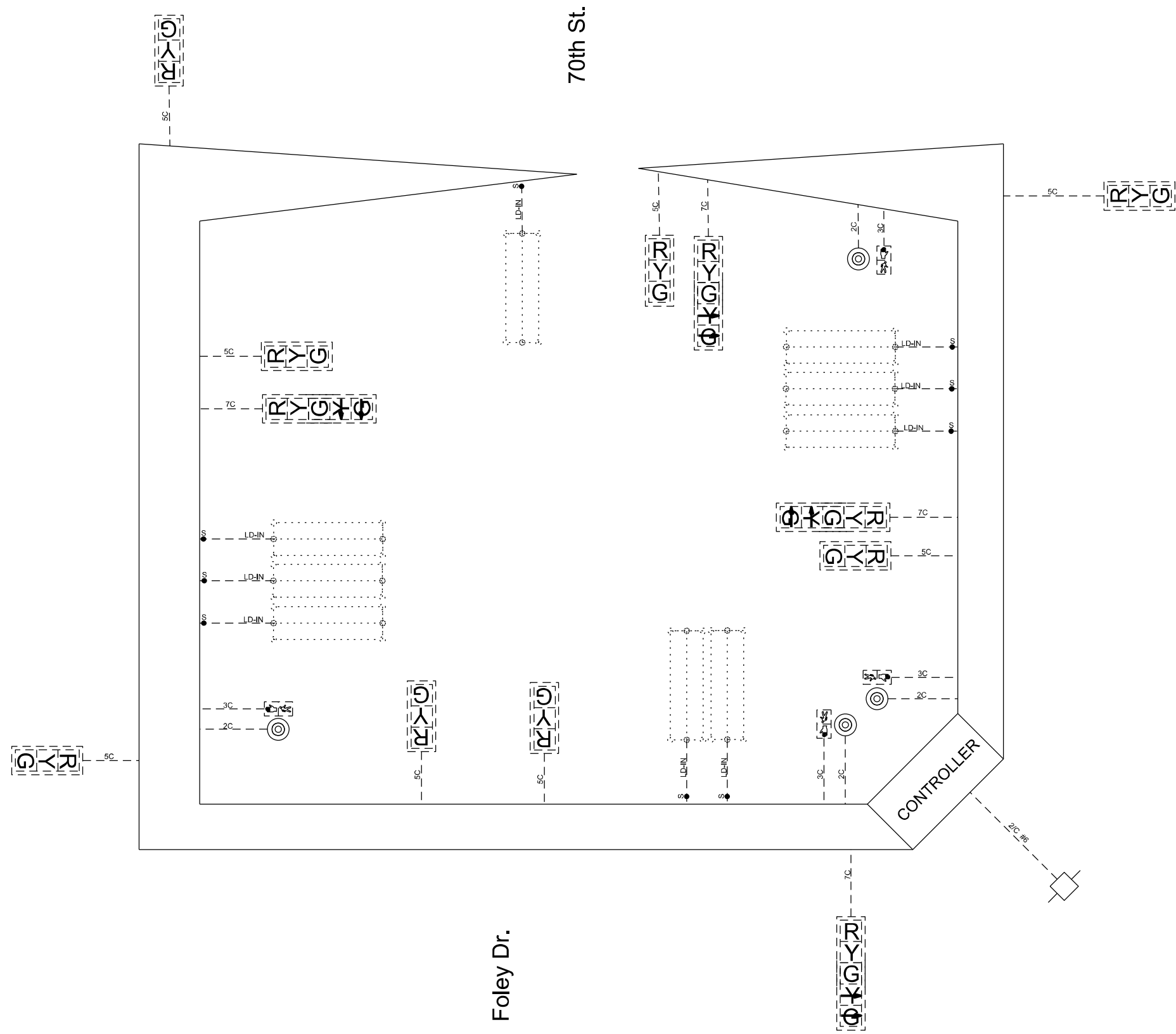
STATE OF ILLINOIS
DEPARTMENT OF TRANSPORTATION

TRAFFIC SIGNAL MODIFICATION PLAN
70th ST. / FOLEY DR. AT W. MAIN ST.

SCALE: SHEET OF SHEETS STA. TO STA.

F.A. RTE.	SECTION	COUNTY	TOTAL SHEETS	SHEET NO.
VAR.	DIST 8 TS MODERNIZATION 2024-3	MADISON & ST. CLAIR	17	4
ILLINOIS FED. AID PROJECT			CONTRACT NO. 76T53	

MODEL: 70th St-Foley Dr. and West Main St_2 (Sheet)
 FILE NAME: c:\p\work\wtdaniel.hopkins@illinois.gov\0837096\0876153-sh1-clan.dgn



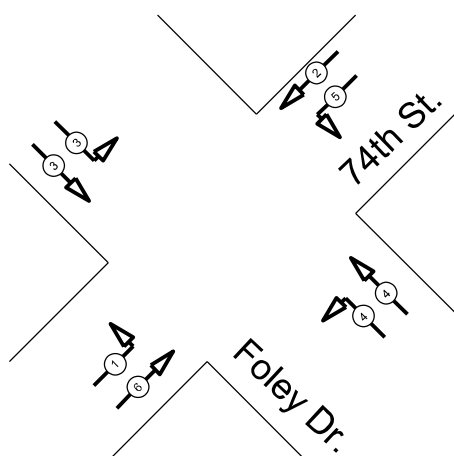
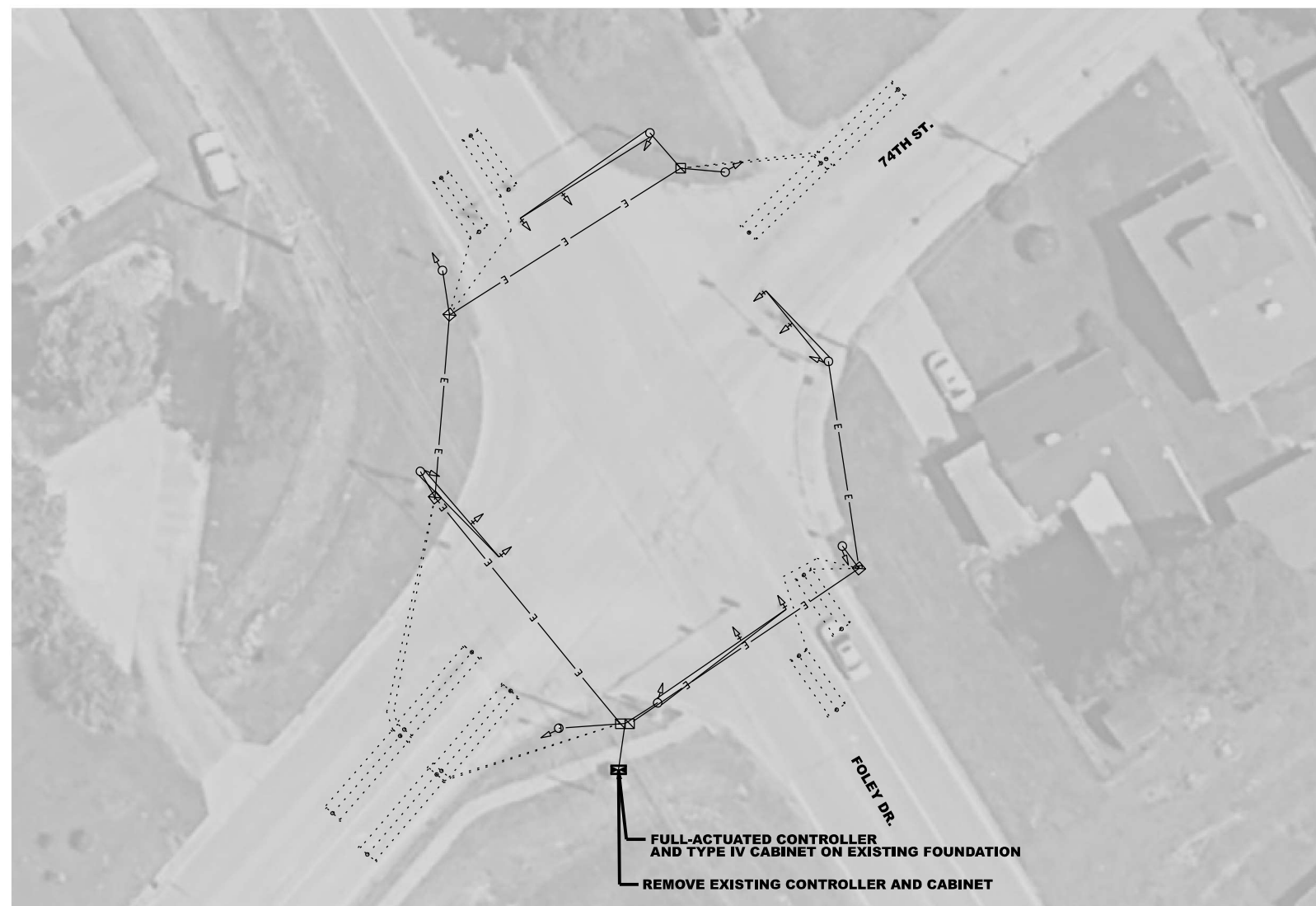
USER NAME = daniel.hopkins	DESIGNED -	REVISED -
DRAWN -	REVISED -	
PLOT SCALE = \$SCALE\$	CHECKED -	REVISED -
PLOT DATE = 2/6/2024	DATE -	REVISED -

STATE OF ILLINOIS
 DEPARTMENT OF TRANSPORTATION

CABLE DIAGRAM
 70th ST. / FOLEY DR. AT W. MAIN ST.

SCALE: SHEET OF SHEETS STA. TO STA.

F.A. RTE.	SECTION	COUNTY	TOTAL SHEETS	SHEET NO.
VAR.	DIST 8 TS MODERNIZATION 2024-3	MADISON & ST. CLAIR	17	5
CONTRACT NO. 76T53				
ILLINOIS FED. AID PROJECT				



EXISTING SEQUENCE OF OPERATION								
PHASE	1	2	3	4	5	6	7	8
MOVEMENT							NOT USED	NOT USED
	EB LT	WB	SB	NB	WB LT	EB		
CONCURRENT MOVEMENT PERMITTED	5 or 6	5 or 6	NONE	NONE	1 or 2	1 or 2	NOT USED	NOT USED

MODEL: 74th St and Foley Dr. [Sheet]
 FILE NAME: c:\pwworking\tdaniel.hopkins@illinois.gov\d0837096D876753-shd-plan.dgn

USER NAME = daniel.hopkins	DESIGNED -	REVISED -
DRAWN -	REVISIONS -	
PLOT SCALE = \$\$SCALE\$	CHECKED -	REVISED -
PLOT DATE = 2/6/2024	DATE -	REVISED -

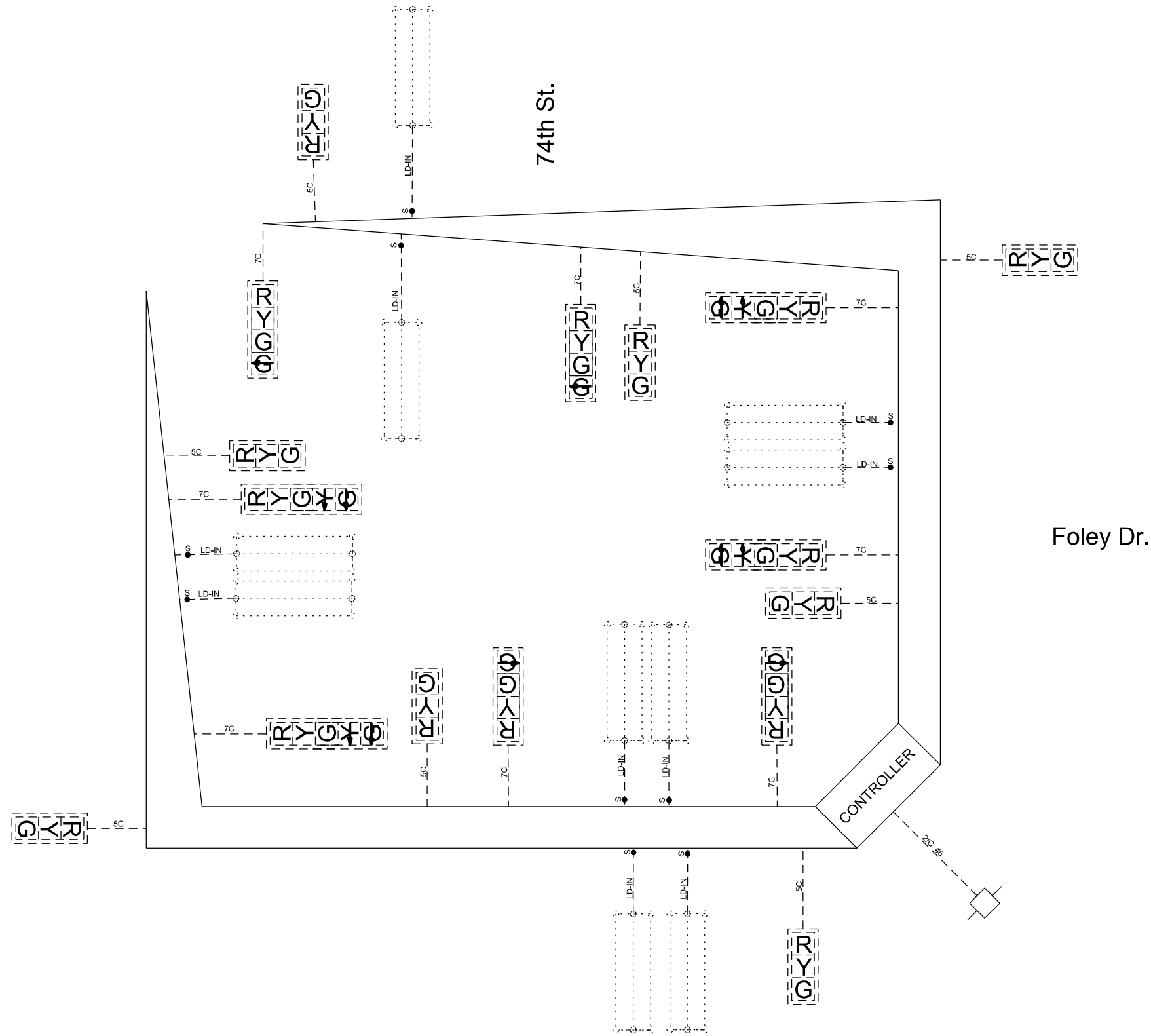
STATE OF ILLINOIS
DEPARTMENT OF TRANSPORTATION

TRAFFIC SIGNAL MODIFICATION PLAN
74th ST. AT FOLEY DR.

SCALE: SHEET OF SHEETS STA. TO STA.

F.A. RTE.	SECTION	COUNTY	TOTAL SHEETS	SHEET NO.
VAR.	DIST 8 TS MODERNIZATION 2024-3	MADISON & ST. CLAIR	17	6
CONTRACT NO. 76T53				
ILLINOIS FED. AID PROJECT				

MODEL: 74th St. and Foley Dr.-2 [Sheet]
 FILE NAME: c:\p\work\view\daniel.hopkins@illinois.gov\0837096\0876153-sh1-clan.dgn



USER NAME = daniel.hopkins	DESIGNED -	REVISED -
PLOT SCALE = \$\$SCALE\$	DRAWN -	REVISED -
PLOT DATE = 2/6/2024	CHECKED -	REVISED -
	DATE -	REVISED -

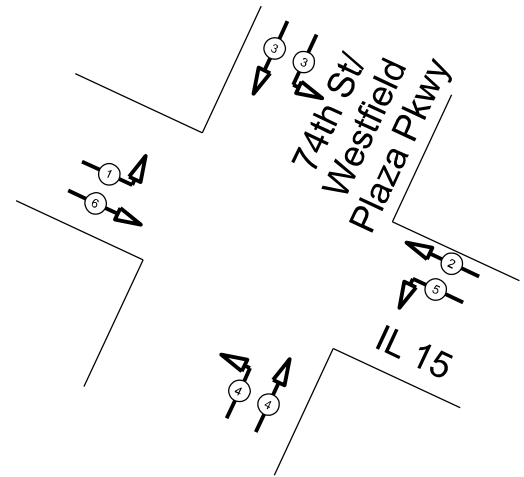
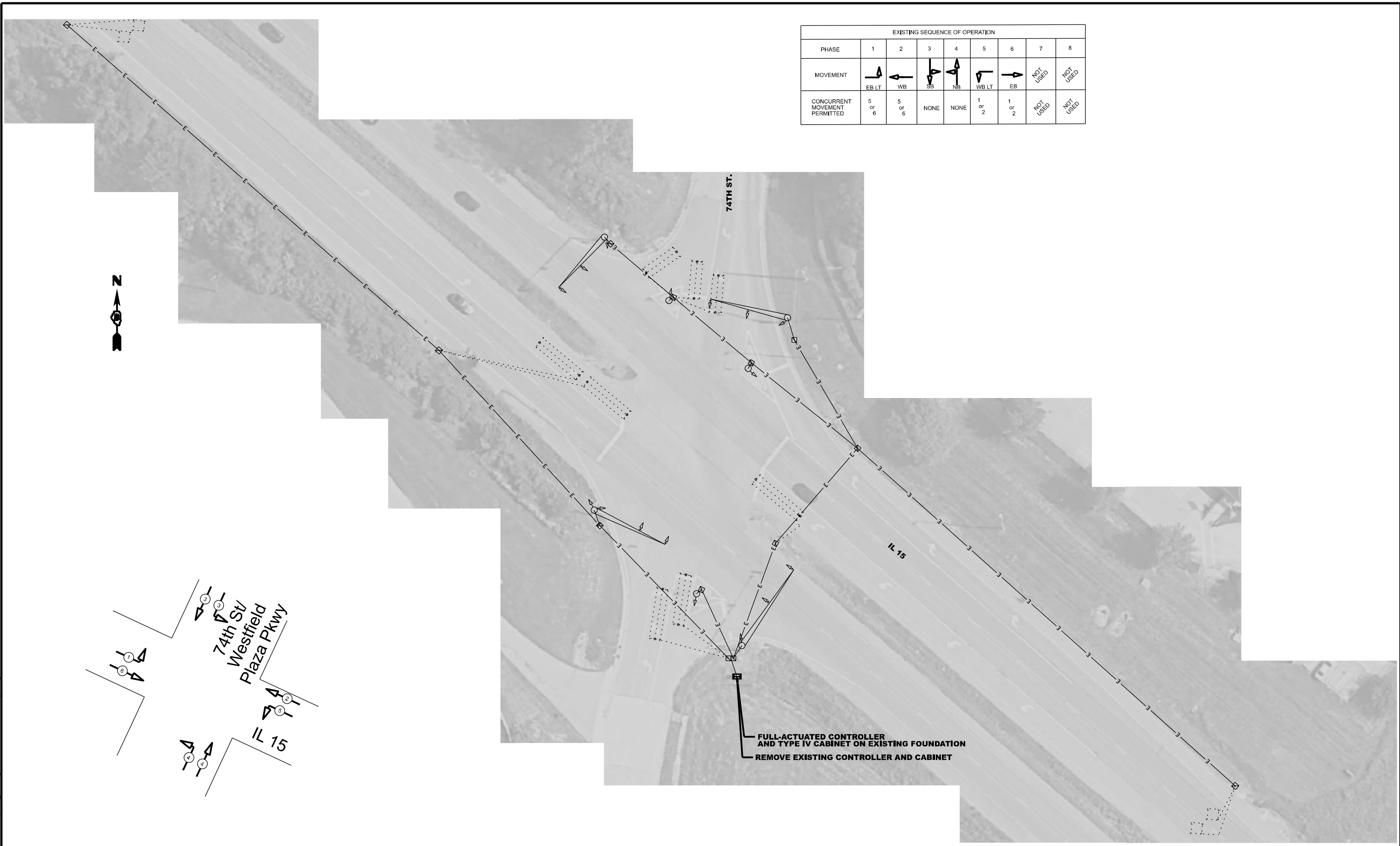
**STATE OF ILLINOIS
 DEPARTMENT OF TRANSPORTATION**

**CABLE DIAGRAM
 74th ST. AT FOLEY DR.**

SCALE: SHEET OF SHEETS STA. TO STA.

F.A. RTE.	SECTION	COUNTY	TOTAL SHEETS	SHEET NO.
VAR.	DIST 8 TS MODERNIZATION 2024-3	MADISON & ST. CLAIR	17	7
CONTRACT NO. 76T53				
ILLINOIS FED. AID PROJECT				

EXISTING SEQUENCE OF OPERATION								
PHASE	1	2	3	4	5	6	7	8
MOVEMENT							NOT USED	NOT USED
CONCURRENT MOVEMENT PERMITTED	5 of 6	5 of 6	NONE	NONE	1 of 2	1 of 2	NOT USED	NOT USED



FULL-ACTUATED CONTROLLER AND TYPE IV CABINET ON EXISTING FOUNDATION
 REMOVE EXISTING CONTROLLER AND CABINET

MODEL: IL 15 and 74th St (Sheet)
 FILE NAME: c:\pwworking\daniel.hopkins@illinois.gov\d0837096D876153-shd-plan.dgn

USER NAME = daniel.hopkins	DESIGNED -	REVISED -
PLOT SCALE = \$SCALE\$	DRAWN -	REVISED -
PLOT DATE = 2/6/2024	CHECKED -	REVISED -
	DATE -	REVISED -

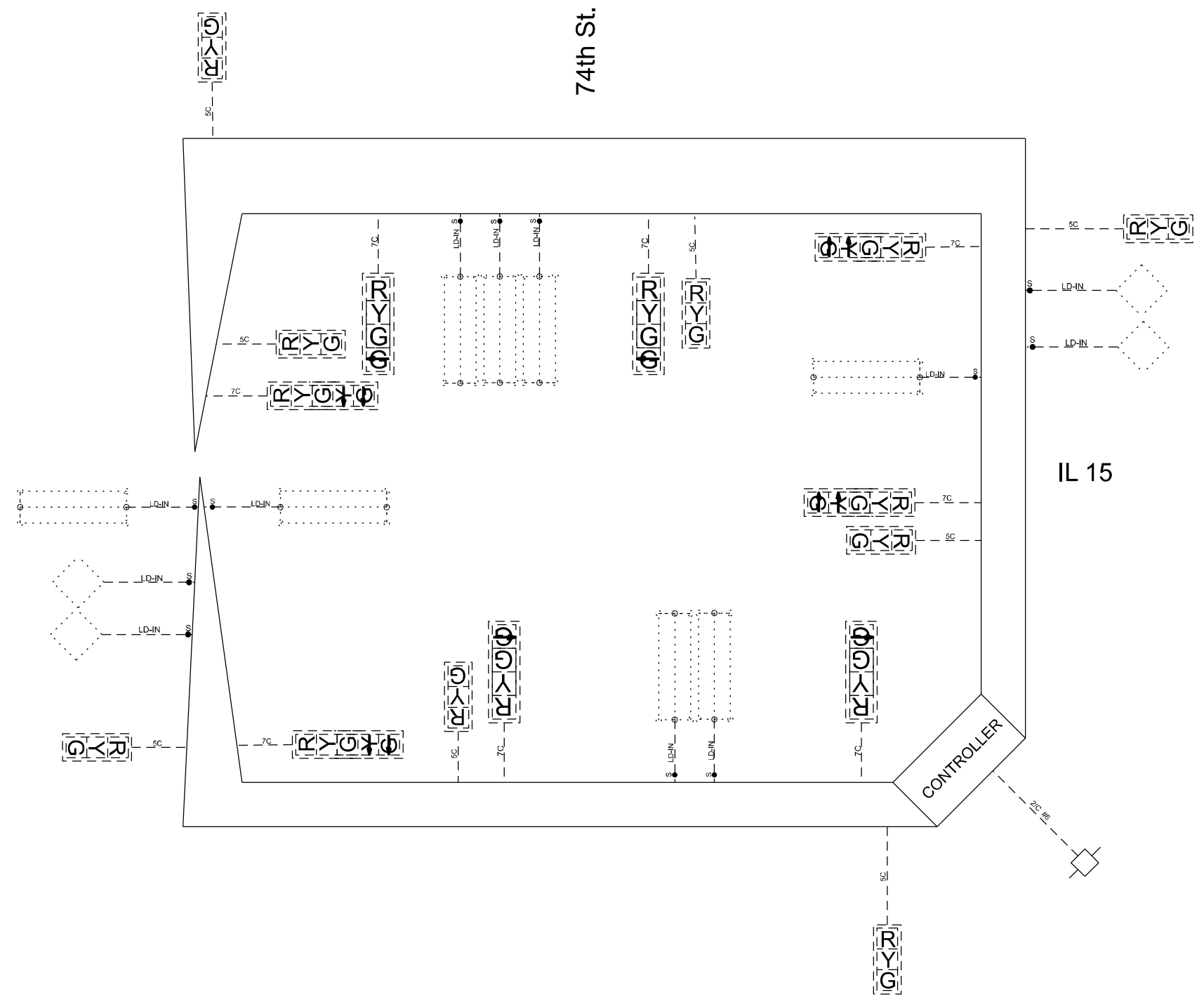
**STATE OF ILLINOIS
 DEPARTMENT OF TRANSPORTATION**

**TRAFFIC SIGNAL MODIFICATION PLAN
 IL 15 AT 74th ST.**

F.A. RTE.	SECTION	COUNTY	TOTAL SHEETS	SHEET NO.
VAR.	DIST 8 TS MODERNIZATION 2024-3	MADISON & ST. CLAIR	17	8
CONTRACT NO. 76T53				
ILLINOIS FED. AID PROJECT				

SCALE: SHEET OF SHEETS STA. TO STA.

MODEL: IL 15 and 74th St-2 (Sheet)
 FILE NAME: c:\pwworking\daniel.hopkins@illinois.gov\d0837096\0876153-sh-2.dwg



USER NAME = daniel.hopkins	DESIGNED -	REVISED -
PLOT SCALE = \$SCALE\$	DRAWN -	REVISED -
PLOT DATE = 2/6/2024	CHECKED -	REVISED -
	DATE -	REVISED -

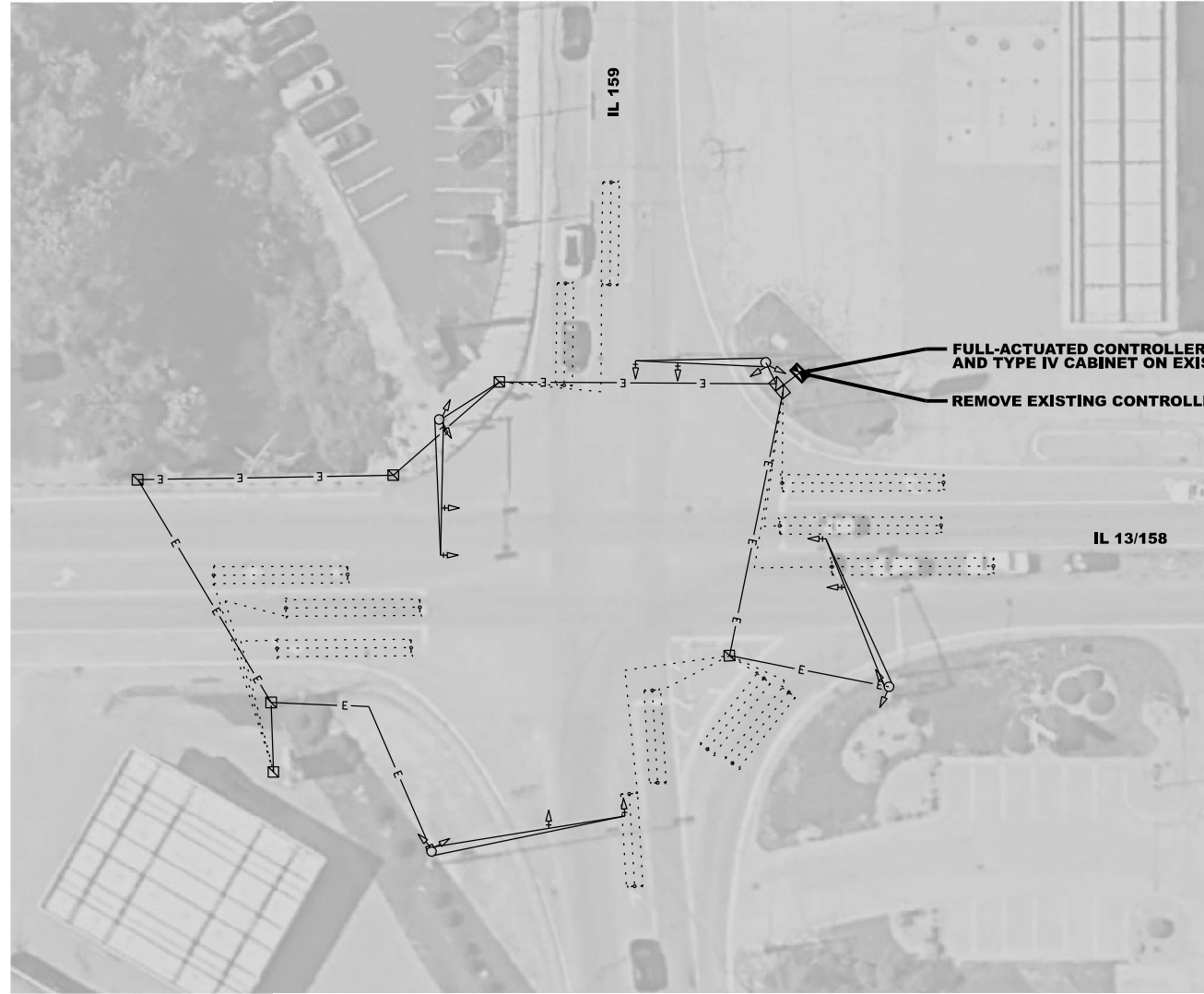
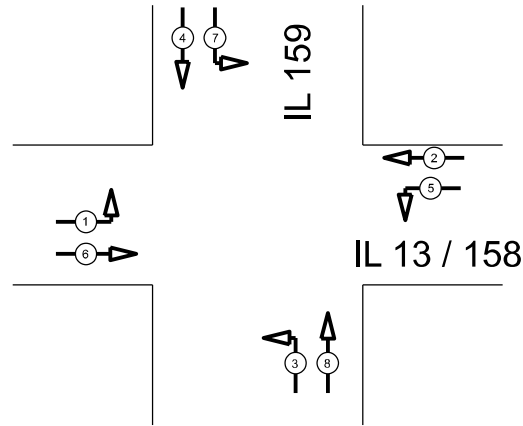
**STATE OF ILLINOIS
 DEPARTMENT OF TRANSPORTATION**

**CABLE DIAGRAM
 IL 15 AT 74th ST.**

SCALE: SHEET OF SHEETS STA. TO STA.

F.A. RTE.	SECTION	COUNTY	TOTAL SHEETS	SHEET NO.
VAR.	DIST 8 TS MODERNIZATION 2024-3	MADISON & ST. CLAIR	17	9
CONTRACT NO. 76T53				
ILLINOIS FED. AID PROJECT				

EXISTING SEQUENCE OF OPERATION								
PHASE	1	2	3	4	5	6	7	8
MOVEMENT								
CONCURRENT MOVEMENT PERMITTED	5 or 6	5 or 6	7 or 8	7 or 8	1 or 2	1 or 2	3 or 4	3 or 4



MODEL: IL_13-158 and IL_159 [Sheet]
FILE NAME: c:\p\work\work\tdaniel.hopkins@illinois.gov\0837096\0876153-shd-plan.dgn

USER NAME = daniel.hopkins	DESIGNED -	REVISED -
	DRAWN -	REVISED -
PLOT SCALE = \$SCALE\$	CHECKED -	REVISED -
PLOT DATE = 2/6/2024	DATE -	REVISED -

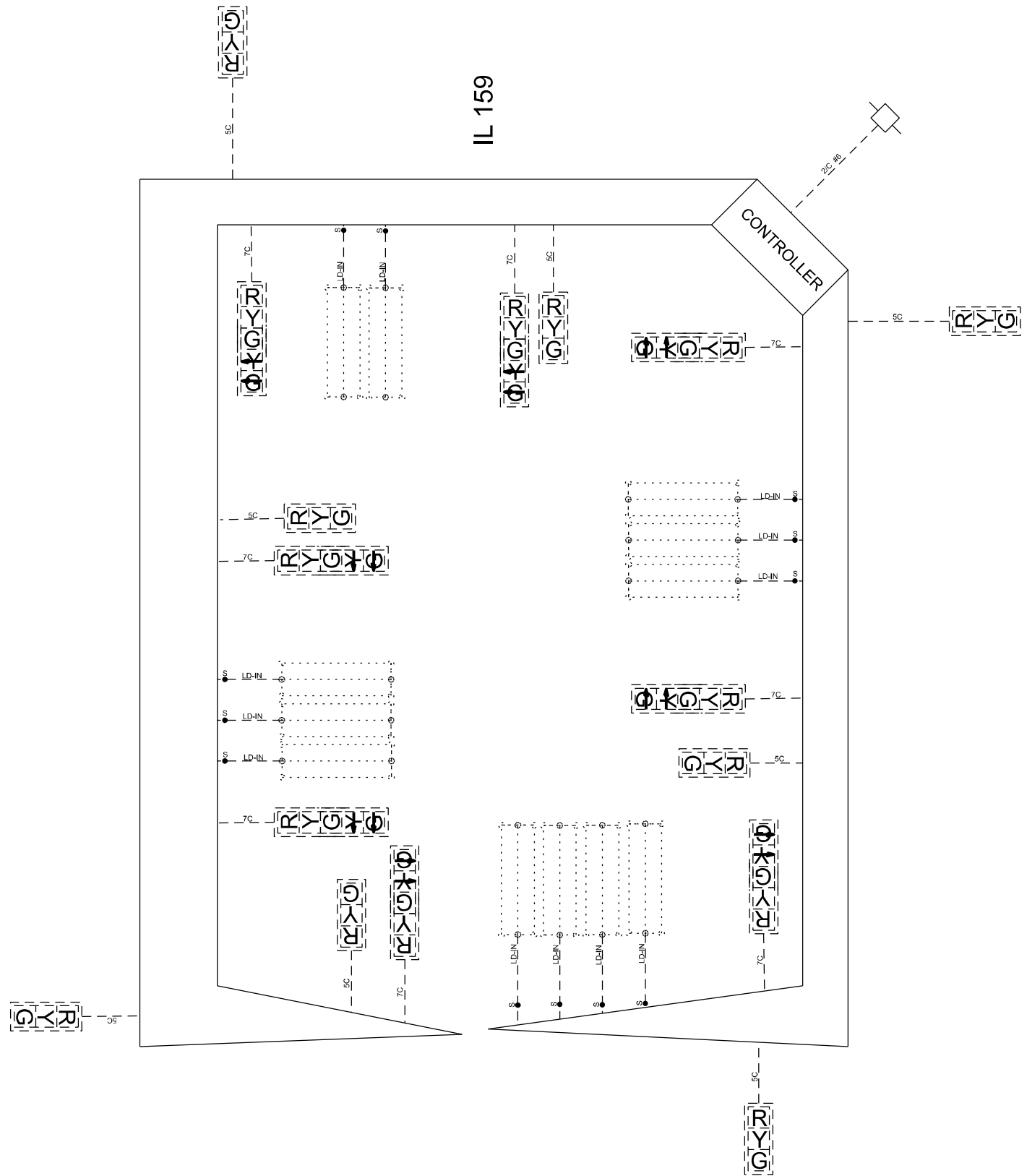
**STATE OF ILLINOIS
DEPARTMENT OF TRANSPORTATION**

**TRAFFIC SIGNAL MODIFICATION PLAN
IL 13 / 158 AT IL 159**

SCALE: SHEET OF SHEETS STA. TO STA.

F.A. RTE.	SECTION	COUNTY	TOTAL SHEETS	SHEET NO.
VAR.	DIST 8 TS MODERNIZATION 2024-3	MADISON & ST. CLAIR	17	10
ILLINOIS FED. AID PROJECT			CONTRACT NO. 76T53	

MODEL: IL_13-158 and IL_158-2 (Sheet)
 FILE NAME: c:\p\work\work\daniel.hopkins@illinois.gov\d0837096D0876153-sh1-clan.dgn



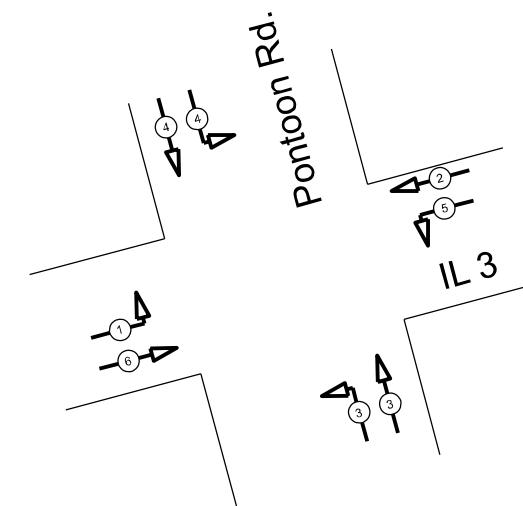
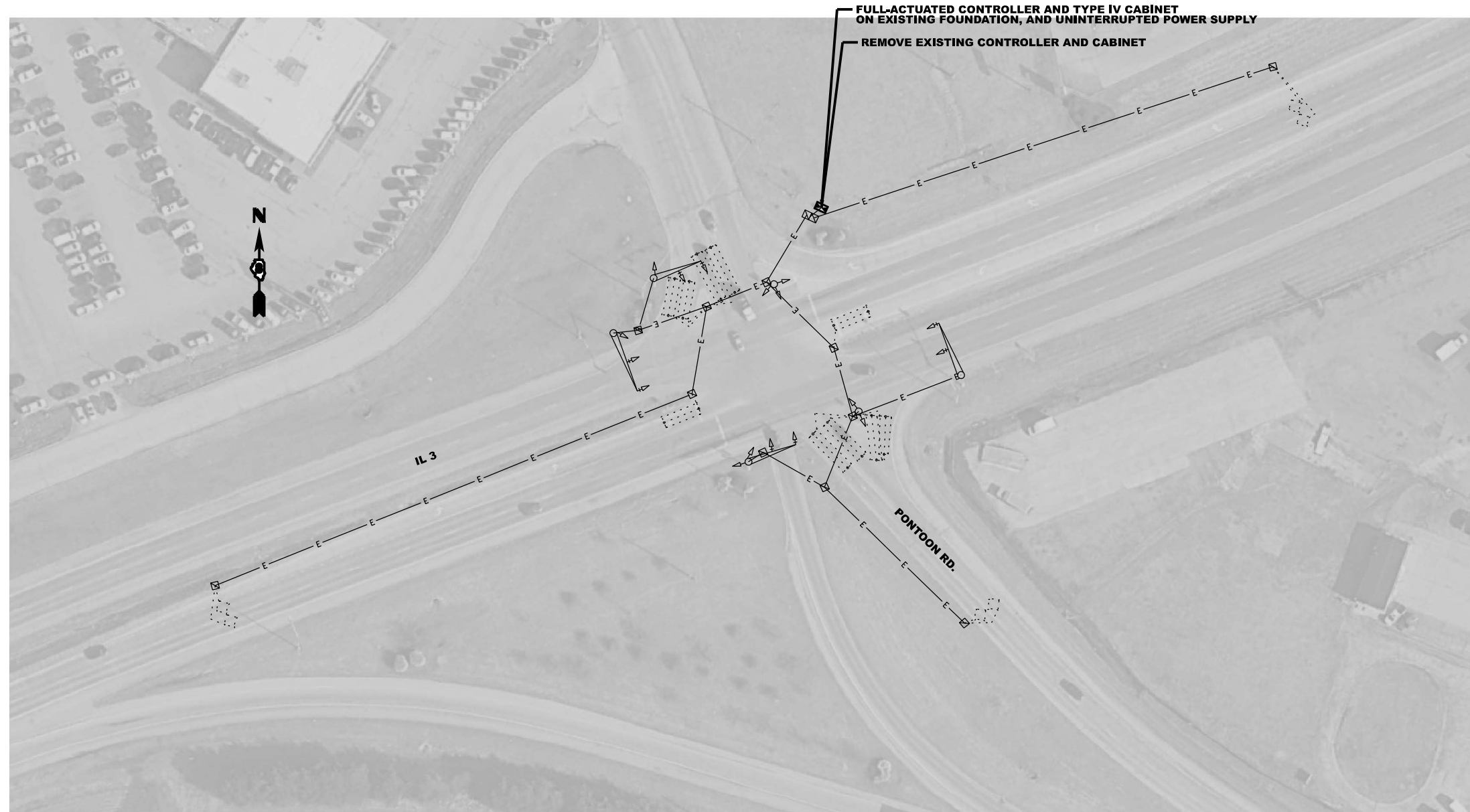
**STATE OF ILLINOIS
 DEPARTMENT OF TRANSPORTATION**

**CABLE DIAGRAM
 IL 13 / 158 AT IL 159**

USER NAME = daniel.hopkins	DESIGNED -	REVISED -
	DRAWN -	REVISED -
PLOT SCALE = \$\$SCALE\$	CHECKED -	REVISED -
PLOT DATE = 2/6/2024	DATE -	REVISED -

SCALE: SHEET OF SHEETS STA. TO STA.

F.A. RTE.	SECTION	COUNTY	TOTAL SHEETS	SHEET NO.
VAR.	DIST 8 TS MODERNIZATION 2024-3	MADISON & ST. CLAIR	17	11
			CONTRACT NO. 76T53	
		ILLINOIS	FED. AID PROJECT	



EXISTING SEQUENCE OF OPERATION								
PHASE	1	2	3	4	5	6	7	8
MOVEMENT							NOT USED	NOT USED
CONCURRENT MOVEMENT PERMITTED	5 or 6	5 or 6	NONE	NONE	1 or 2	1 or 2	NOT USED	NOT USED

MODEL: IL 3 and Pontoon Rd. [Sheet]
 FILE NAME: c:\p\work\wtd\tdaniel.hopkins@illinois.gov\0837096\0876153-shd-plan.dgn

USER NAME = daniel.hopkins	DESIGNED -	REVISED -
PLOT SCALE = \$SCALE\$	DRAWN -	REVISED -
PLOT DATE = 2/6/2024	CHECKED -	REVISED -
	DATE -	REVISED -

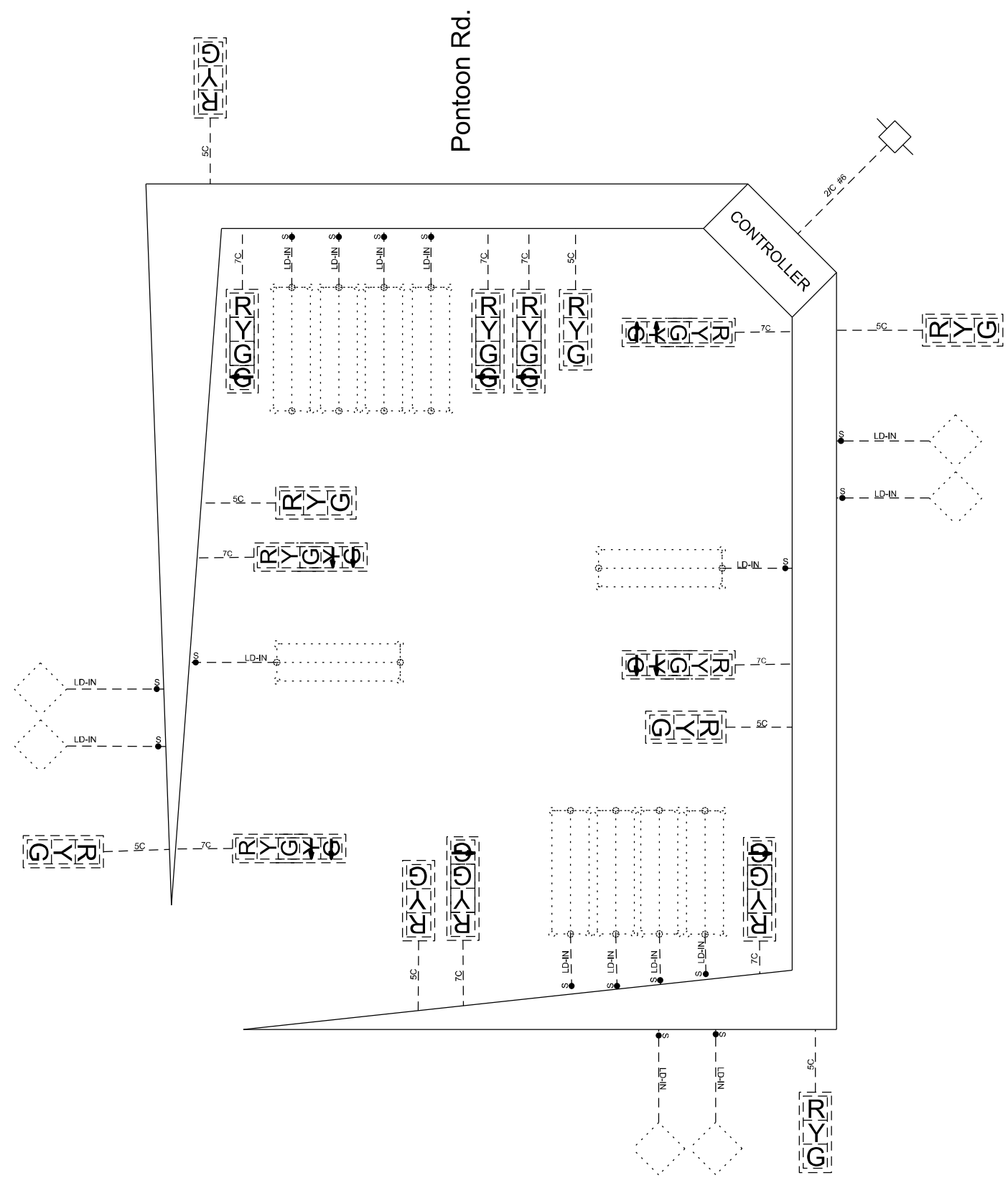
STATE OF ILLINOIS
DEPARTMENT OF TRANSPORTATION

TRAFFIC SIGNAL MODIFICATION PLAN
IL 3 AT PONTOON RD.

SCALE: SHEET OF SHEETS STA. TO STA.

F.A. RTE.	SECTION	COUNTY	TOTAL SHEETS	SHEET NO.
VAR.	DIST 8 TS MODERNIZATION 2024-3	MADISON & ST. CLAIR	17	12
CONTRACT NO. 76T53				
ILLINOIS FED. AID PROJECT				

MODEL: IL 3 and Pontoon Rd-2 [Sheet]
 FILE NAME: c:\p\work\w1\tdaniel.hopkins@illinois.gov\0837096\0876153-sh1-clan.dgn



IL 3

STATE OF ILLINOIS
 DEPARTMENT OF TRANSPORTATION

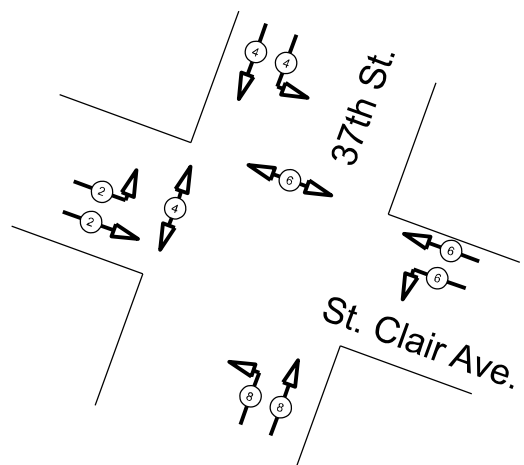
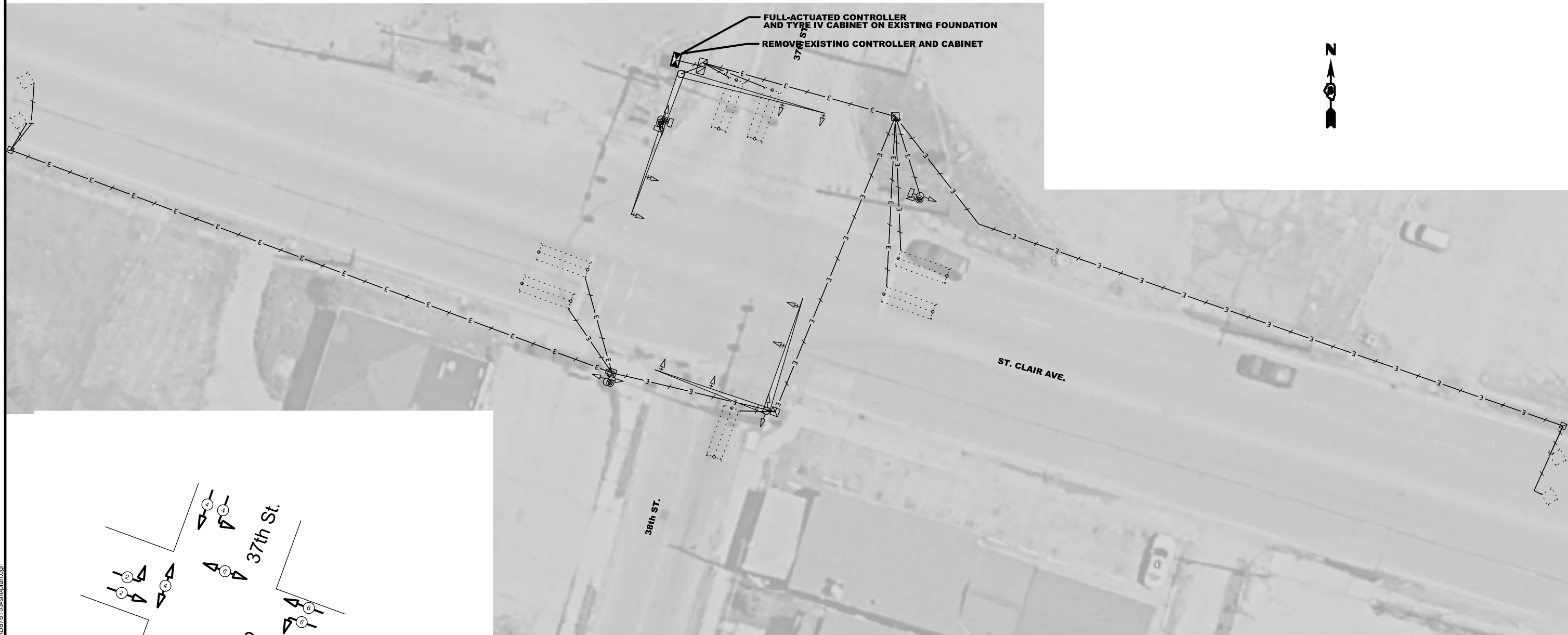
CABLE DIAGRAM
 IL 3 AT PONTOON RD.

USER NAME = daniel.hopkins	DESIGNED -	REVISED -
PLOT SCALE = \$SCALE\$	DRAWN -	REVISED -
PLOT DATE = 2/6/2024	CHECKED -	REVISED -
	DATE -	REVISED -

SCALE:	SHEET	OF	SHEETS	STA.	TO	STA.
--------	-------	----	--------	------	----	------

F.A. RTE.	SECTION	COUNTY	TOTAL SHEETS	SHEET NO.
VAR.	DIST 8 TS MODERNIZATION 2024-3	MADISON & ST. CLAIR	17	13
CONTRACT NO. 76T53				
ILLINOIS FED. AID PROJECT				

EXISTING SEQUENCE OF OPERATION								
PHASE	1	2	3	4	5	6	7	8
MOVEMENT	NOT USED	→ EB	↑ NB	↓ SB	NOT USED	↔ WB	NOT USED	NOT USED
CONCURRENT MOVEMENT PERMITTED	NOT USED	6	4	8	NOT USED	2	NOT USED	NOT USED



MODEL: St. Clair Ave and 37th (Sheet)
FILE NAME: c:\p\work\low\tdaniel_hopkins@illinois.gov\0837096\0876153-st-clair.dgn

USER NAME = daniel_hopkins	DESIGNED -	REVISED -
PLOT SCALE = \$SCALE\$	DRAWN -	REVISED -
PLOT DATE = 2/6/2024	CHECKED -	REVISED -
	DATE -	REVISED -

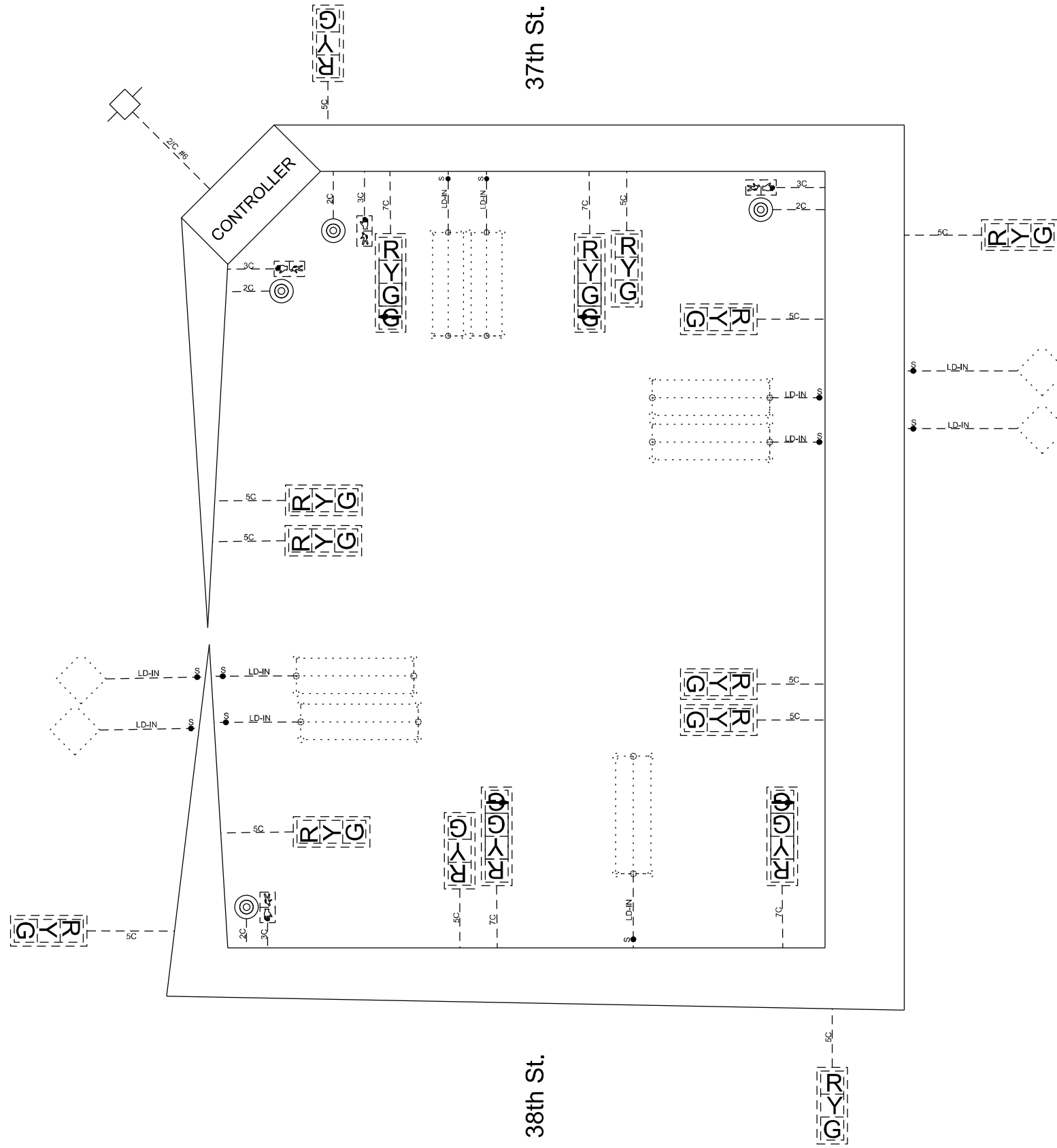
**STATE OF ILLINOIS
DEPARTMENT OF TRANSPORTATION**

**TRAFFIC SIGNAL MODIFICATION PLAN
ST. CLAIR AVE. & 37TH ST. / 38TH ST.**

SCALE: SHEET OF SHEETS STA. TO STA.

F.A. RTE.	SECTION	COUNTY	TOTAL SHEETS	SHEET NO.
VAR.	DIST 8 TS MODERNIZATION 2024-3	MADISON & ST. CLAIR	17	14
ILLINOIS FED. AID PROJECT			CONTRACT NO. 76T53	

MODEL: St. Clair Ave and 37th-2 [Sheet]
 FILE NAME: c:\p\work\low\cdaniel.hopkins@illinois.gov\0837096\0876153-sh-clair.dgn



St. Clair Ave.

STATE OF ILLINOIS
 DEPARTMENT OF TRANSPORTATION

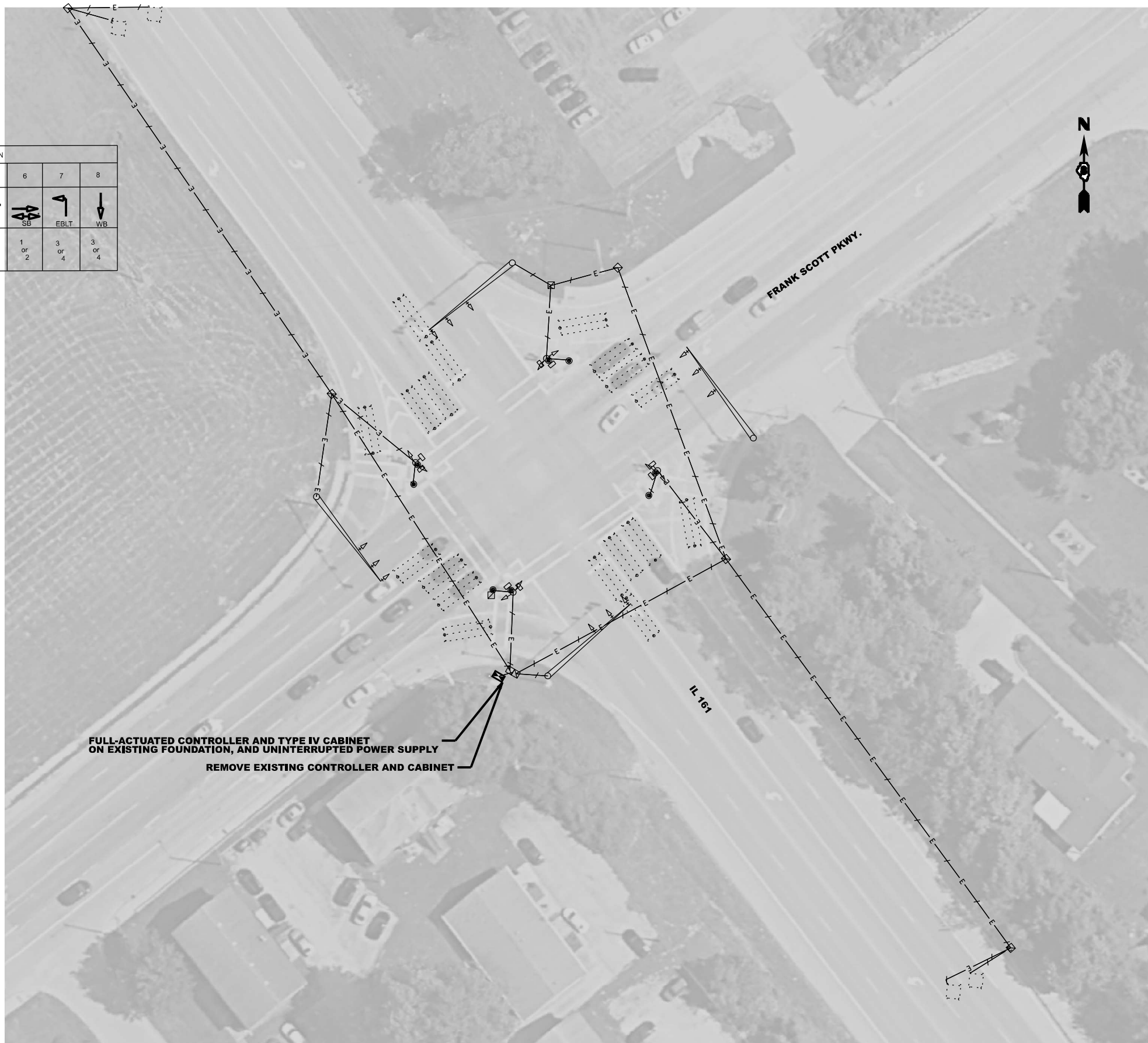
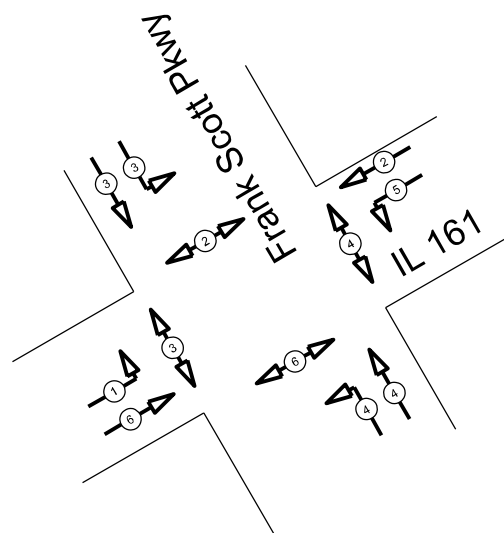
CABLE DIAGRAM
 ST. CLAIR AVE. & 37TH ST. / 38TH ST.

USER NAME = daniel.hopkins	DESIGNED -	REVISED -
	DRAWN -	REVISED -
PLOT SCALE = \$SCALE\$	CHECKED -	REVISED -
PLOT DATE = 2/6/2024	DATE -	REVISED -

SCALE: SHEET OF SHEETS STA. TO STA.

F.A. RTE.	SECTION	COUNTY	TOTAL SHEETS	SHEET NO.
VAR.	DIST 8 TS MODERNIZATION 2024-3	MADISON & ST. CLAIR	17	15
CONTRACT NO. 76T53				
ILLINOIS FED. AID PROJECT				

EXISTING SEQUENCE OF OPERATION								
PHASE	1	2	3	4	5	6	7	8
MOVEMENT								
CONCURRENT MOVEMENT PERMITTED	5 or 6	5 or 6	7 or 8	7 or 8	1 or 2	1 or 2	3 or 4	3 or 4



MODEL: IL 161 and Frank Scott Pkwy (Sheet)
FILE NAME: c:\p\work\wtd\daniel.hopkins@illinois.gov\0837096\0876153-shd-plan.dgn

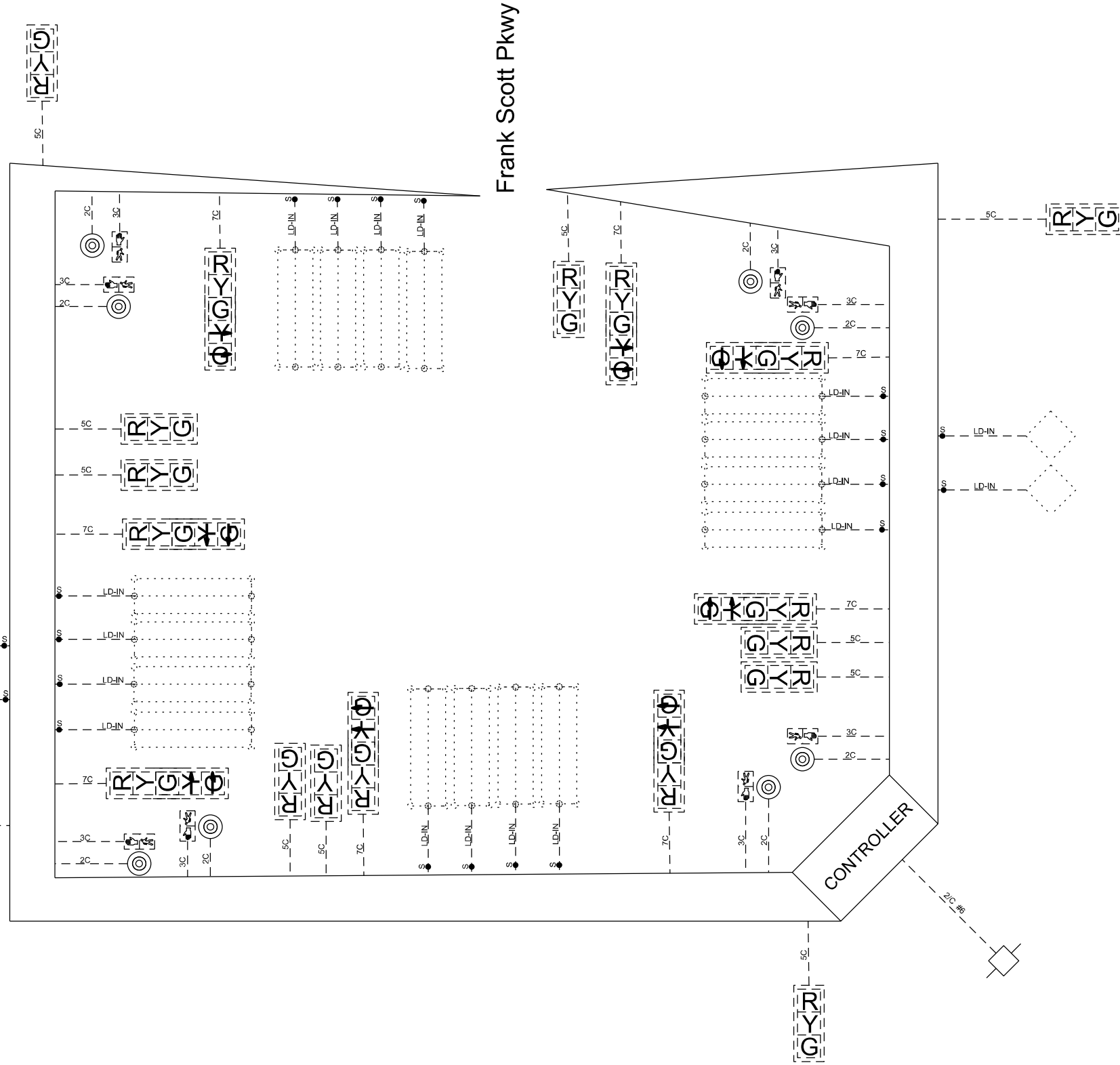
USER NAME = daniel.hopkins	DESIGNED -	REVISED -
PLOT SCALE = \$SCALE\$	DRAWN -	REVISED -
PLOT DATE = 2/6/2024	CHECKED -	REVISED -
	DATE -	REVISED -

**STATE OF ILLINOIS
DEPARTMENT OF TRANSPORTATION**

**TRAFFIC SIGNAL MODIFICATION PLAN
IL 161 & FRANK SCOTT PKWY.**

SCALE: SHEET OF SHEETS STA. TO STA.

F.A. RTE.	SECTION	COUNTY	TOTAL SHEETS	SHEET NO.
VAR.	DIST 8 TS MODERNIZATION 2024-3	MADISON & ST. CLAIR	17	16
CONTRACT NO. 76T53				
ILLINOIS FED. AID PROJECT				



Frank Scott Pkwy

IL 161

MODEL: IL_161 and Frank Scott Pkwy-2 (Sheet)
 FILE NAME: c:\p\work\161\daniel.hopkins@illinois.gov\d0837096\d0876153-sh1-clan.dgn

USER NAME = daniel.hopkins	DESIGNED -	REVISED -
PLOT SCALE = \$SCALE\$	DRAWN -	REVISED -
PLOT DATE = 2/6/2024	CHECKED -	REVISED -
	DATE -	REVISED -

STATE OF ILLINOIS
 DEPARTMENT OF TRANSPORTATION

CABLE DIAGRAM
 IL 161 & FRANK SCOTT PKWY.

SCALE: SHEET OF SHEETS STA. TO STA.

F.A. RTE.	SECTION	COUNTY	TOTAL SHEETS	SHEET NO.
VAR.	DIST 8 TS MODERNIZATION 2024-3	MADISON & ST. CLAIR	17	17
CONTRACT NO. 76T53				
ILLINOIS FED. AID PROJECT				