

STATE OF ILLINOIS
DEPARTMENT OF TRANSPORTATION

F.A.I. RTE	SECTION	COUNTY	TOTAL SHEETS	SHEET NO.
72	D7 HIGHWAY LIGHTING 2024-1	MACON	15	1
		ILLINOIS	CONTRACT NO. 74C82	

FOR INDEX OF SHEETS, SEE SHEET NO. 2

PROPOSED HIGHWAY PLANS

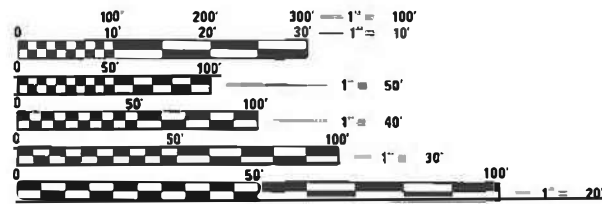
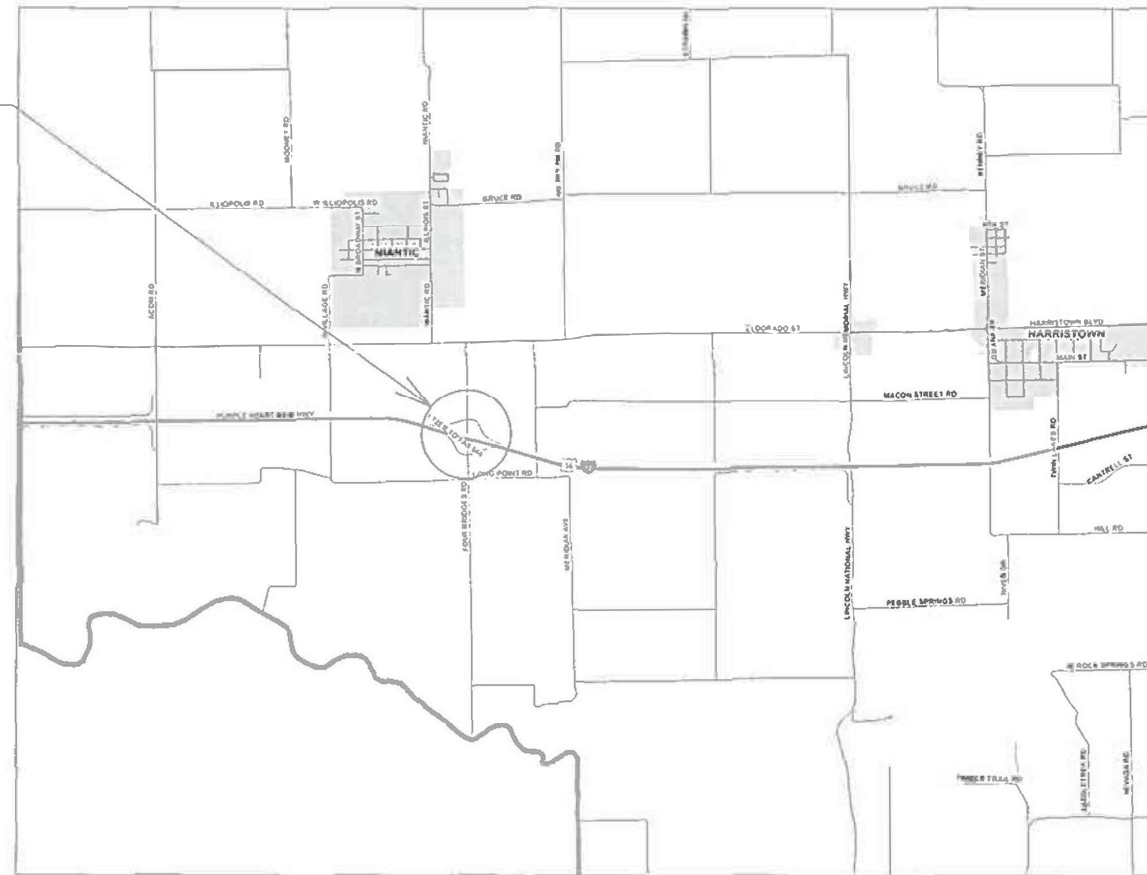
FAI ROUTE 72 (I-72)
SECTION D7 HIGHWAY LIGHTING 2024-1
PROJECT NHPP-1G6D(146)
REMOVE AND REPLACE LIGHTING WITH LED
MACON COUNTY

C-97-015-24

D-97-014-24



LOCATION OF THE PROJECT



FULL SIZE PLANS HAVE BEEN PREPARED USING STANDARD ENGINEERING SCALES. REDUCED SIZED PLANS WILL NOT CONFORM TO STANDARD SCALES. IN MAKING MEASUREMENTS ON REDUCED PLANS, THE ABOVE SCALES MAY BE USED.

J.U.L.I.E.
JOINT UTILITY LOCATION INFORMATION FOR EXCAVATORS
1-800-892-0123
OR 811

PROJECT ENGINEER DEWAYNE SEACHRIST
PROJECT MANAGER ROBERT GREUEL

CONTRACT NO. 74C82

STATE OF ILLINOIS
DEPARTMENT OF TRANSPORTATION

SUBMITTED January 24 20 24
Jeffrey P. Mynick REGIONAL ENGINEER

March 22, 2024 [Signature]
ENGINEER OF DESIGN AND ENVIRONMENT

March 22, 2024 [Signature]
DIRECTOR OF HIGHWAYS PROJECT IMPLEMENTATION

PRINTED BY THE AUTHORITY
OF THE STATE OF ILLINOIS

GENERAL NOTES

ELECTRICAL WORK SHALL CONFORM TO NATIONAL, STATE, AND LOCAL CODES.

THE CONTRACTOR SHALL SET LIGHT POLES 15' BEHIND EDGE OF PAVEMENT (WHITE LINE).

A DEPTH OF FORTY-EIGHT INCHES (48") OR GREATER FOR ALL UNDERGROUND UTILITIES SHALL BE MAINTAINED WITHIN ACCESS-CONTROLLED RIGHT OF WAY UNLESS CROSSING A WATERWAY WHERE THE MINIMUM ALLOWED DEPTH SHALL BE SIXTY INCHES (60") BELOW THE FLOW LINE ELEVATION OF THE WATERWAY.

UTILITIES INSTALLED NEAR BRIDGE STRUCTURES SHALL BE A MINIMUM OF SEVENTY-FIVE FEET (75') BEYOND THE BRIDGE ABUTMENT LOCATION.

SEEDING WILL NOT BE PERMITTED AT ANY TIME WHEN THE GROUND IS FROZEN, WET, OR IN AN UNTILLABLE CONDITION. LOCATIONS TO BE SEEDED WILL BE DETERMINED BY THE ENGINEER.

THERE ARE NO TREES SCHEDULED TO BE REMOVED ON THIS PROJECT. IF TREES ARE TO BE REMOVED FOR WHATEVER REASON, THEY WILL NOT BE ALLOWED TO BE REMOVED BETWEEN APRIL 1ST AND SEPTEMBER 30TH OF ANY GIVEN YEAR.

THE CONTRACTOR SHALL BE RESPONSIBLE FOR ANY MOWING, BRUSH AND SHRUB REMOVAL AND SHALL DISPOSE OF ALL REMOVED ITEMS OFF THE JOB SITE. THE COST OF THIS WORK SHALL BE INCLUDED IN THE BID PRICE FOR THE REMOVAL OF LIGHTING UNIT, NO SALVAGE.

THE FINISHED EARTHWORK SHALL HAVE A VEGETATION SUSTAINING SOIL COVERING THE TOP FOUR INCHES (100 MILLIMETERS) IN AREAS TO BE SEEDED OR SODDED. THE VEGETATION SUSTAINING SOIL REQUIRED WILL NOT BE PAID FOR SEPARATELY BUT WILL BE INCLUDED IN THE BID PRICE FOR THE REMOVAL OF POLE FOUNDATION.

ALL EXCAVATED MATERIAL, WHICH INCLUDES DIGGING OR GRADING OF ANY SOIL OR FILL MATERIAL, WITH THE EXCEPTION OF AGGREGATE FILL MUST BE INCORPORATED WITHIN THE IDOT RIGHT OF WAY DUE TO ENVIRONMENTAL DOCUMENTATION REQUIREMENTS.

ABANDONED UNDERGROUND UTILITIES THAT CONFLICT WITH CONSTRUCTION SHALL BE DISPOSED OF OUTSIDE THE LIMITS OF THE RIGHT OF WAY ACCORDING TO ARTICLE 202.03 OF THE STANDARD SPECIFICATIONS AND AS DIRECTED BY THE ENGINEER. THIS WORK WILL NOT BE PAID FOR SEPERATELY BUT WILL BE INCLUDED IN THE COST OF REMOVE ELECTRIC CABLE FROM CONDUIT.

ANY REFERENCE TO A STANDARD IN THESE PLANS SHALL BE INTERPRETED TO MEAN THE EDITION AS INDICATED BY THE SUBNUMBER SHOWN IN THE LIST OF STANDARDS OR THE COPY INCLUDED IN THESE PLANS.

THE CONTRACTOR SHALL BE RESPONSIBLE FOR LOCATING EXISTING IDOT ELECTRICAL FACILITIES AT HIS/HER OWN EXPENSE IF REQUIRED. THE CONTRACTOR SHALL ALSO BE LIABLE FOR ANY DAMAGE TO IDOT FACILITIES RESULTING FROM INACCURATE LOCATING.





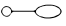





THE CONTACTOR SHALL CONTACT JULIE AT LEAST 48 HOURS PRIOR TO EXCAVATION TO DETERMINE WHICH UTILITIES ARE IN THE AREA.

SIGNS ATTACHED TO LIGHT POLES SHALL BE REMOVED, PRESERVED AND REINSTALLED. THE COST OF THIS WORK SHALL BE INCLUDED IN THE BID PRICE FOR REMOVAL OF LIGHTING UNIT, NO SALVAGE.

HIGHWAY STANDARDS

- 000001-08 STANDARD SYMBOLS, ABBREVIATIONS AND PATTERNES
- 001006 DECIMAL OF AN INCH AND FOOT
- 701001-02 OFF-ROAD OPERATIONS, 2L, 2W, MORE THAN 15' (4.5m) AWAY
- 701006-05 OFF-RD OPERATIONS, 2L, 2W, 15' (4.5m) TO 24" (600mm) FROM PAVEMENT EDGE
- 701101-05 OFF-ROAD OPERATIONS, MULTILANE, 15' (4.5m) TO 24" (600mm) FROM PAVEMENT EDGE
- 701106-02 OFF-ROAD OPERATIONS, MULTILANE, MORE THAN 15' (4.5m) AWAY
- 701201-05 LANE CLOSURE, 2L 2W, DAY ONLY, FOR SPEEDS ≥ 45 MPH
- 701400-12 APPROACH TO LANE CLOSURE, FREEWAY/EXPRESSWAY
- 701401-13 LANE CLOSURE, FREEWAY/EXPRESSWAY
- 701411-09 LANE CLOSURE, MULTILANE, AT ENTRANCE OR EXIT RAMP, FOR SPEEDS ≥ 45 MPH
- 701456-05 PARTIAL EXIT RAMP CLOSURE, FREEWAY/EXPRESSWAY
- 701901-09 TRAFFIC CONTROL DEVICES
- 805001-01 ELECTRICAL SERVICE INSTALLATION DETAILS
- 821101-02 LUMINAIRE WIRING IN POLE
- 825011-04 LIGHTING CONTROLLER PEDESTAL MOUNTED, 240V
- 830021-04 LIGHT POLE STEEL TENON TOP
- 836001-04 LIGHT POLE FOUNDATION
- 838001-01 BREAKAWAY DEVICES

LEGEND

-  R EXISTING ELECTRIC SERVICE TO BE REMOVED.
-  PROPOSED ELECTRIC SERVICE, 120/240V.
-  R EXISTING LIGHTING CONTROLLER TO BE REMOVED.
-  PROPOSED LIGHTING CONTROLLER, 240V, 60A.
-  R EXISTING LIGHTING UNIT TO BE REMOVED.
-  PROPOSED LIGHTING UNIT, LUMINAIRE, LED, ROADWAY, OUTPUT DESIGNATION H, 45FT GALVANIZED STEEL POLE, TENON MOUNT, 1 FT BRACKET ARM, METAL FOUNDATION, BREAKAWAY COUPLINGS WITH SS SCREEN.
-  PROPOSED LIGHTING UNIT, LUMINAIRE, LED, ROADWAY, OUTPUT DESIGNATION H, 45FT GALVANIZED STEEL POLE, TWIN TENON MOUNT, 1 FT BRACKET ARMS, METAL FOUNDATION, BREAKAWAY COUPLINGS WITH SS SCREEN.
-  EXISTING ELECTRIC CABLE IN CONDUIT TO BE REMOVED.
-  PROPOSED UNIT DUCT, 600V, 2-1C NO.6, 1/C NO.6 GROUND, (XLP-TYPE USE), 3/4" DIA. POLYETHYLENE (UNLESS STATED OTHERWISE)
-  PROPOSED COILABLE NONMETALLIC CONDUIT 2" DIA. LENGTH AS NOTED

INDEX OF SHEETS

- 1 COVER SHEET
- 2 GENERAL NOTES, HIGHWAY STANDARDS, INDEX OF SHEETS, AND LEGEND
- 3-4 SUMMARY OF QUANTITIES
- 5-9 LIGHTING REMOVAL PLAN
- 10-14 PROPOSED LIGHTING PLAN
- 15 WIRING DIAGRAM AND LUMINAIRE PERFORMANCE TABLE

REV. - MS

MODEL: D:\default
 FILE: M:\mhc\p\illdot\paw\benley.com\p\illdot\documents\idot_offices\dir\cct_7\Project\374CE2\CADD\DATA\CAD\sheet\0774CE2-sht-general.dgn

USER NAME = jessica.hille	DESIGNED -	REVISED -	STATE OF ILLINOIS DEPARTMENT OF TRANSPORTATION	GENERAL NOTES, HIGHWAY STANDARDS LEGEND, AND INDEX OF SHEETS		F.A.I. RTE.	SECTION	COUNTY	TOTAL SHEETS	SHEET NO.
PLOT SCALE = 100.0000' / in.	DRAWN -	REVISED -				72	D7 HIGHWAY LIGHTING 2024-1	MACON	15	2
PLOT DATE = 2/1/2024	CHECKED -	REVISED -		SCALE: SHEET OF SHEETS STA. TO STA.		CONTRACT NO. 74C82				
	DATE -	REVISED -		ILLINOIS FED. AID PROJECT						

90% FED
10% STATE

90% FED
10% STATE

SUMMARY OF QUANTITIES			TOTAL QUANTITIES	CONSTRUCTION TYPE CODE		
CODE NO	ITEM	UNIT		0021		
67100100	MOBILIZATION	L SUM	1	1		
70100420	TRAFFIC CONTROL AND PROTECTION, STANDARD	EACH	1	1		
	701411					
70100450	TRAFFIC CONTROL AND PROTECTION, STANDARD	L SUM	1	1		
	701201					
70100800	TRAFFIC CONTROL AND PROTECTION, STANDARD	L SUM	1	1		
	701401					
70100825	TRAFFIC CONTROL AND PROTECTION, STANDARD	L SUM	1	1		
	701456					
80400100	ELECTRIC SERVICE INSTALLATION	EACH	1	1		
81028750	UNDERGROUND CONDUIT, COILABLE NONMETALLIC	FOOT	405	405		
	CONDUIT, 2" DIA.					
81603034	UNIT DUCT, 600V, 2-1C NO. 6, 1/C NO. 6 GROUND,	FOOT	6935	6935		
	(XLP-TYPE USE), 3/4" DIA. POLYETHYLENE					
82110008	LUMINAIRE, LED, ROADWAY, OUTPUT DESIGNATION H	EACH	20	20		
82500330	LIGHTING CONTROLLER, PEDESTAL MOUNTED,	EACH	1	1		
	240VOLT, 60AMP					

SUMMARY OF QUANTITIES			TOTAL QUANTITIES	CONSTRUCTION TYPE CODE		
CODE NO	ITEM	UNIT		0021		
83060830	LIGHT POLE, GALVANIZED STEEL, 45 FT. M.H.,	EACH	16	16		
	TENON MOUNT					
83060835	LIGHT POLE, GALVANIZED STEEL, 45 FT. M.H.,	EACH	2	2		
	TENON MOUNT-TWIN					
83600356	LIGHT POLE FOUNDATION, METAL, 15" BOLT	EACH	18	18		
	CIRCLE, 8 5/8" X 6'					
83800650	BREAKAWAY DEVICE, COUPLING WITH STAINLESS	EACH	72	72		
	STEEL SCREEN					
84200600	REMOVAL OF LIGHTING UNIT, NO SALVAGE	EACH	18	18		
84200804	REMOVAL OF POLE FOUNDATION	EACH	18	18		
84500110	REMOVAL OF LIGHTING CONTROLLER	EACH	1	1		
84500120	REMOVAL OF ELECTRIC SERVICE INSTALLATION	EACH	1	1		
84500130	REMOVAL OF LIGHTING CONTROLLER FOUNDATION	EACH	1	1		
89502300	REMOVE ELECTRIC CABLE FROM CONDUIT	FOOT	20805	20805		
X2501000	SEEDING, CLASS 2 (SPECIAL)	ACRE	0.25	0.25		

MODEL: Default
 FILE: \\nafe-pw-backend.com\P\INDOT\Documents\DOT_Offices\Director_T\Projects\74C82\CADDData\CAD\Sheet\DOT74C82-sh-500.dgn

USER NAME = jessica.hille	DESIGNED -	REVISED -
	DRAWN -	REVISED -
PLOT SCALE = 100,0000' / in.	CHECKED -	REVISED -
PLOT DATE = 2/1/2024	DATE -	REVISED -

**STATE OF ILLINOIS
DEPARTMENT OF TRANSPORTATION**

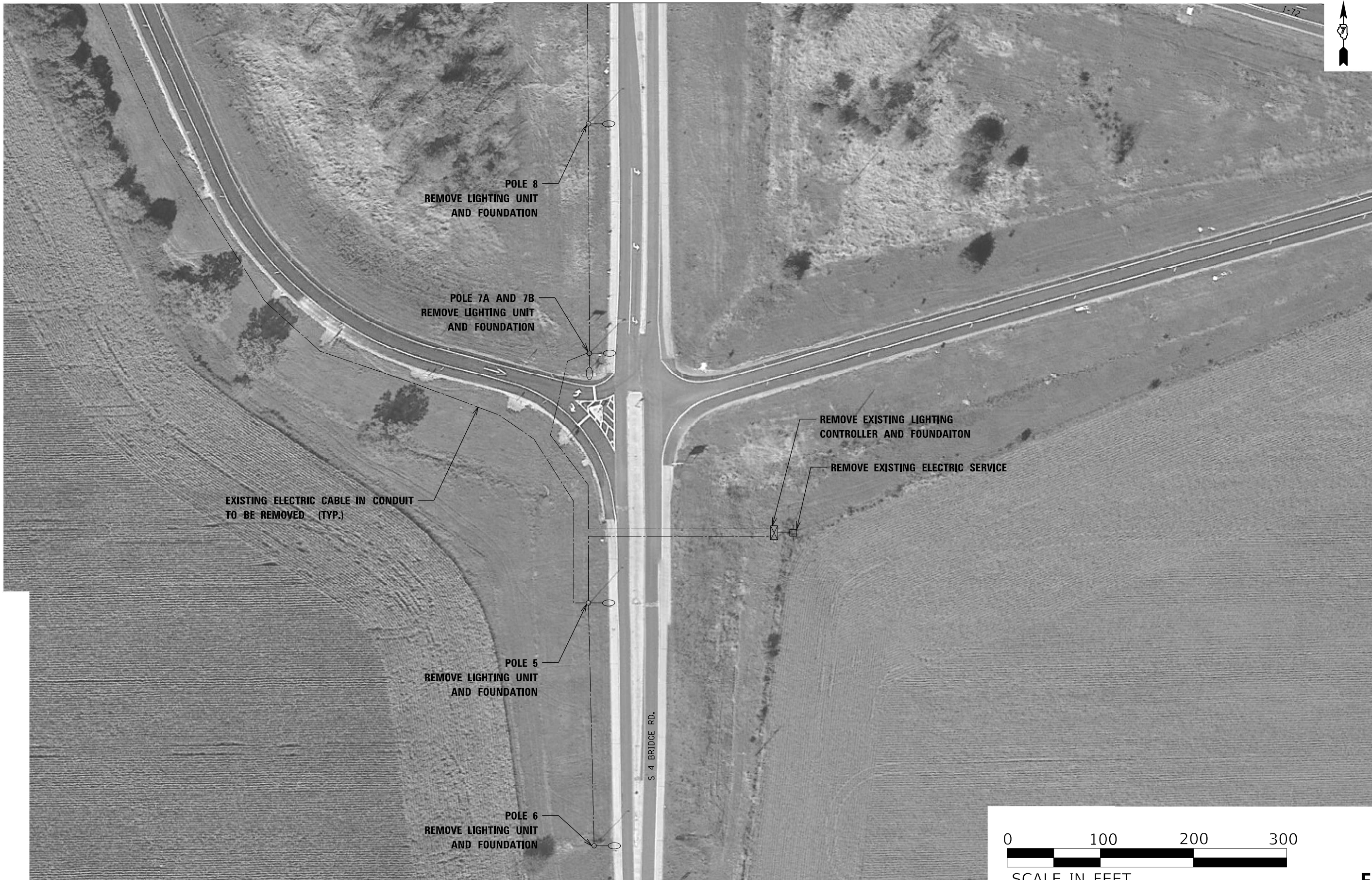
SUMMARY OF QUANTITIES

SCALE: SHEET OF SHEETS STA. TO STA.

F.A.I. RTE.	SECTION	COUNTY	TOTAL SHEETS	SHEET NO.
72	D7 HIGHWAY LIGHTING 2024-1	MACON	14	3
CONTRACT NO. 74C82			ILLINOIS FED. AID PROJECT	



I-72



E-2

MODEL: Default
 FILE: \\na16f-pw\subject-pw-bentley.com\PIV\DOT\Documents\DOT Offices\District 7\Projects\74C82\CADDData\CAD\Sheets\DOT-74C82_RemovLight_01.dgn

USER NAME = jessica.hille	DESIGNED -	REVISED -
	DRAWN -	REVISED -
PLOT SCALE = 100,0000' / in.	CHECKED -	REVISED -
PLOT DATE = 2/1/2024	DATE -	REVISED -

**STATE OF ILLINOIS
DEPARTMENT OF TRANSPORTATION**

LIGHTING REMOVAL PLAN

SCALE: SHEET OF SHEETS STA. TO STA.

F.A.I. RTE.	SECTION	COUNTY	TOTAL SHEETS	SHEET NO.
72	D7 HIGHWAY LIGHTING 2024-1	MACON	15	5
CONTRACT NO. 74C82				
ILLINOIS FED. AID PROJECT				

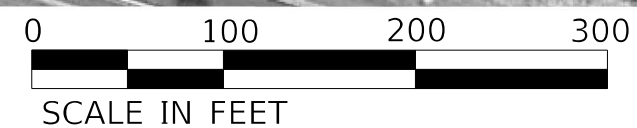
MATCHLINE SEE SHEET E-4



MATCHLINE SEE SHEET E-5

MATCHLINE SEE SHEET E-6

MATCHLINE SEE SHEET E-2



E-3

MODEL: Default
FILE NAME: p:\subject\aw\be\ef\com\PIV\DOT\Documents\DOT Office\District 7\Projects\74C82\CADDData\CAD\Sheet\DOT-74C82_PlanLight_02.dgn

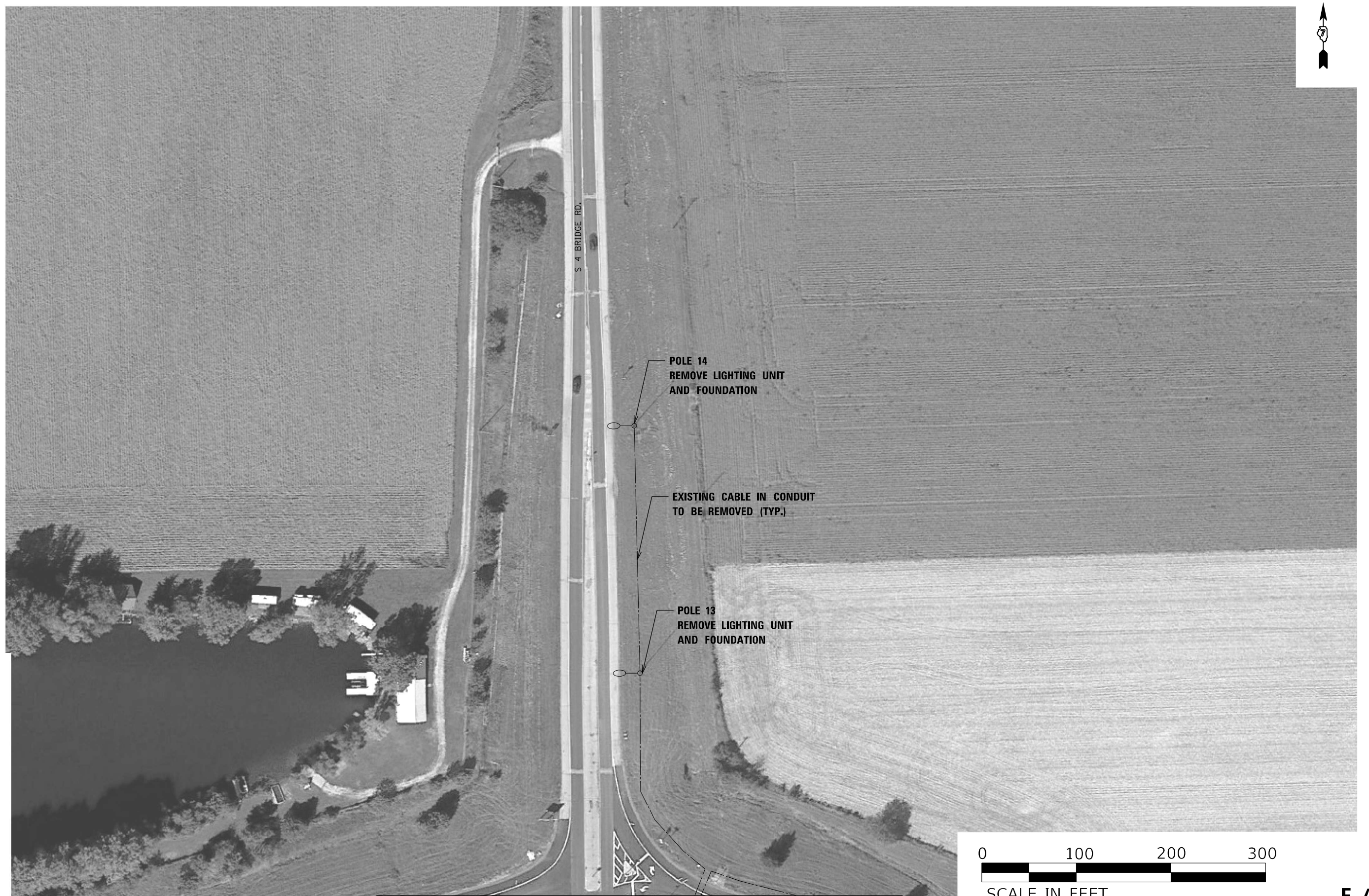
USER NAME = jessica.ville	DESIGNED -	REVISED -
	DRAWN -	REVISED -
PLOT SCALE = 100,0000' / in.	CHECKED -	REVISED -
PLOT DATE = 2/1/2024	DATE -	REVISED -

**STATE OF ILLINOIS
DEPARTMENT OF TRANSPORTATION**

LIGHTING REMOVAL PLAN

SCALE: SHEET OF SHEETS STA. TO STA.

F.A.I RTE.	SECTION	COUNTY	TOTAL SHEETS	SHEET NO.
72	D7 HIGHWAY LIGHTING 2024-1	MACON	15	6
CONTRACT NO. 74C82				
ILLINOIS FED. AID PROJECT				



MATCHLINE SEE SHEET E-3

MODEL: Default
 FILE NAME: p:\ultra-caw-benefits.com\PIV\DOT\Documents\DOT Offices\District 7\Projects\74C82\CADDData\CAD\Sheets\DOT-74C82_RemovLight_03.dgn

USER NAME = jessica.hille	DESIGNED -	REVISED -
	DRAWN -	REVISED -
PLOT SCALE = 100,0000' / in.	CHECKED -	REVISED -
PLOT DATE = 2/1/2024	DATE -	REVISED -

STATE OF ILLINOIS
DEPARTMENT OF TRANSPORTATION

LIGHTING REMOVAL PLAN

SCALE: SHEET OF SHEETS STA. TO STA.

F.A.I. RTE.	SECTION	COUNTY	TOTAL SHEETS	SHEET NO.
72	D7 HIGHWAY LIGHTING 2024-1	MACON	15	7
CONTRACT NO. 74C82				
ILLINOIS FED. AID PROJECT				



MATCHLINE SEE SHEET E-3



E-5

MODEL: Default
FILE NAME: p:\i\sect-cw-bentley.com\PIV\DOT\Documents\DOT Offices\District 7\Projects\74C82\CADDData\CAD\Sheet\DOT-74C82_RemovLight_04.dgn

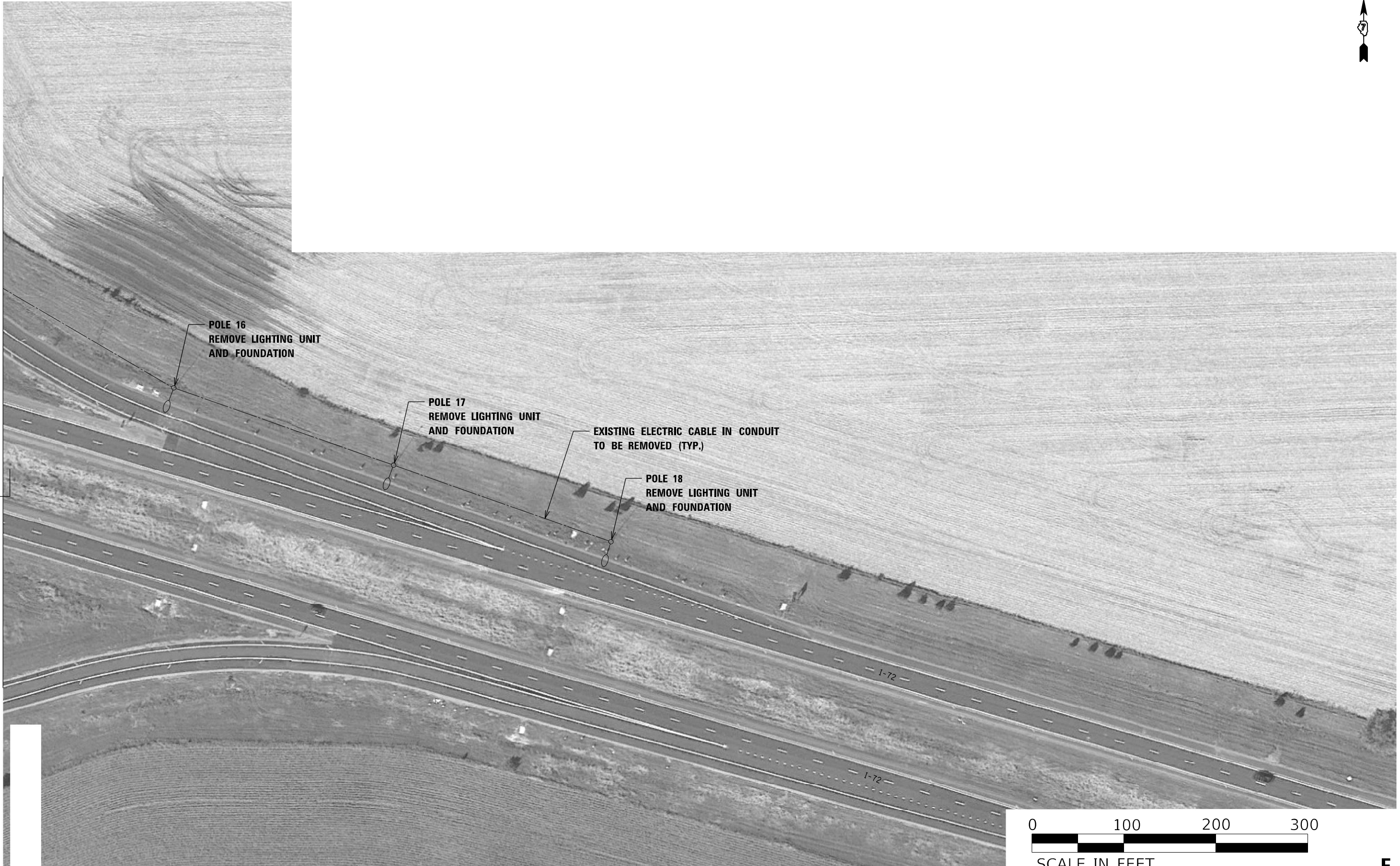
USER NAME = jessica.hille	DESIGNED -	REVISED -
	DRAWN -	REVISED -
PLOT SCALE = 100,0000 ' / in.	CHECKED -	REVISED -
PLOT DATE = 2/1/2024	DATE -	REVISED -

**STATE OF ILLINOIS
DEPARTMENT OF TRANSPORTATION**

LIGHTING REMOVAL PLAN

SCALE: SHEET OF SHEETS STA. TO STA.

F.A.I RTE.	SECTION	COUNTY	TOTAL SHEETS	SHEET NO.
72	D7 HIGHWAY LIGHTING 2024-1	MACON	15	8
CONTRACT NO. 74C82				
ILLINOIS FED. AID PROJECT				



MATCHLINE SEE SHEET E-3

POLE 16
REMOVE LIGHTING UNIT
AND FOUNDATION

POLE 17
REMOVE LIGHTING UNIT
AND FOUNDATION

EXISTING ELECTRIC CABLE IN CONDUIT
TO BE REMOVED (TYP.)

POLE 18
REMOVE LIGHTING UNIT
AND FOUNDATION



E-6

MODEL: Default
FILE: \\maile-prod\share\aw-beckley.com\PIV\DOT\Documents\DOT Office\District 7\Projects\74C82\CADD\Drawings\CAD\Drawings\DOT-74C82_PlanLight_05.dgn

USER NAME = jessica.hille	DESIGNED -	REVISED -
	DRAWN -	REVISED -
PLOT SCALE = 100,0000' / in.	CHECKED -	REVISED -
PLOT DATE = 2/1/2024	DATE -	REVISED -

**STATE OF ILLINOIS
DEPARTMENT OF TRANSPORTATION**

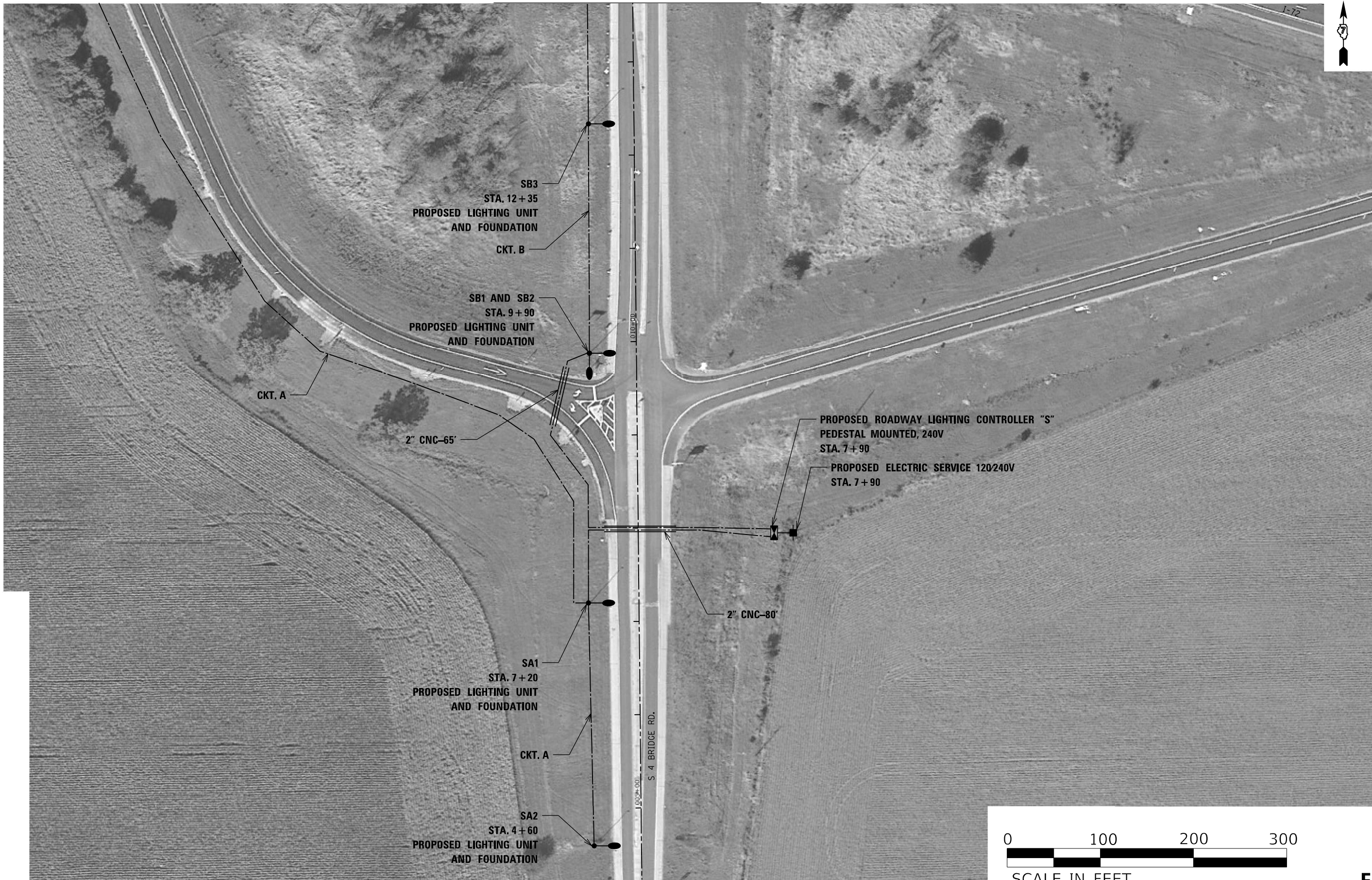
LIGHTING REMOVAL PLAN

SCALE: SHEET OF SHEETS STA. TO STA.

F.A.I. RTE.	SECTION	COUNTY	TOTAL SHEETS	SHEET NO.
72	D7 HIGHWAY LIGHTING 2024-1	MACON	15	9
CONTRACT NO. 74C82				
ILLINOIS FED. AID PROJECT				



I-72



E-7

MODEL: Default
 FILE NAME: p:\project-new\benefy.com\PIV\DOT\Documents\DOT Offices\District 7\Projects\74C82\CADDData\CAD\SheetSD7-74C82_Light_01.dgn

USER NAME = jessica.ville	DESIGNED -	REVISED -
	DRAWN -	REVISED -
PLOT SCALE = 100,0000' / in.	CHECKED -	REVISED -
PLOT DATE = 2/1/2024	DATE -	REVISED -

**STATE OF ILLINOIS
DEPARTMENT OF TRANSPORTATION**

PROPOSED LIGHTING PLAN

SCALE: SHEET OF SHEETS STA. TO STA.

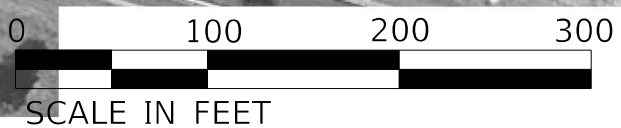
F.A.I. RTE.	SECTION	COUNTY	TOTAL SHEETS	SHEET NO.
72	D7 HIGHWAY LIGHTING 2024-1	MACON	15	10
CONTRACT NO. 74C82				
ILLINOIS FED. AID PROJECT				

MATCHLINE SEE SHEET E-9



MATCHLINE SEE SHEET E-10

MATCHLINE SEE SHEET E-11



MATCHLINE SEE SHEET E-7

E-8

MODEL: Default
FILE: \\MAILSrv\pub\subject-pw-beadefy.com\PIV\DOT\Documents\DOT Office\Director\7\Projects\74C82\CADDData\CAD\SheetSD7-74C82_Light_02.dgn

USER NAME = jessica.ville	DESIGNED -	REVISED -
	DRAWN -	REVISED -
PLOT SCALE = 100,0000' / in.	CHECKED -	REVISED -
PLOT DATE = 2/1/2024	DATE -	REVISED -

**STATE OF ILLINOIS
DEPARTMENT OF TRANSPORTATION**

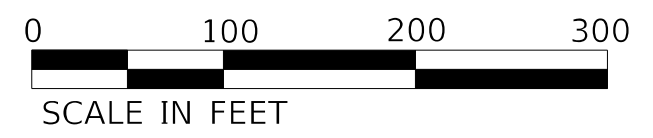
PROPOSED LIGHTING PLAN

SCALE: SHEET OF SHEETS STA. TO STA.

F.A.I. RTE.	SECTION	COUNTY	TOTAL SHEETS	SHEET NO.
72	D7 HIGHWAY LIGHTING 2024-1	MACON	15	11
CONTRACT NO. 74C82				
ILLINOIS FED. AID PROJECT				



MATCHLINE SEE SHEET E-8



E-9

MODEL: Default
 FILE NAME: p:\i\sect-caw-bee\paw.com\PIV\DOT\Documents\DOT Office\District 7\Projects\74C82\CADDData\CAD\Sheets\DOT-74C82_Light_03.dgn

USER NAME = jessica.hille	DESIGNED -	REVISED -
	DRAWN -	REVISED -
PLOT SCALE = 100,0000 ' / in.	CHECKED -	REVISED -
PLOT DATE = 2/1/2024	DATE -	REVISED -

STATE OF ILLINOIS
DEPARTMENT OF TRANSPORTATION

PROPOSED LIGHTING PLAN

SCALE: SHEET OF SHEETS STA. TO STA.

F.A.I. RTE.	SECTION	COUNTY	TOTAL SHEETS	SHEET NO.
72	D7 HIGHWAY LIGHTING 2024-1	MACON	15	12
CONTRACT NO. 74C82				
ILLINOIS FED. AID PROJECT				



MATCHLINE SEE SHEET E-8



E-10

MODEL: Default
FILE: \\MAILSrv\pub\ldoc\aw_bentley.com\PIV\DOT\Documents\DOT_Offices\Director_7\Projects\74C82\CADD\Drawings\CD\SheetSD7-74C82_Light_04.dgn

USER NAME = jessica.hille	DESIGNED -	REVISED -
	DRAWN -	REVISED -
PLOT SCALE = 100,0000 ' / in.	CHECKED -	REVISED -
PLOT DATE = 2/1/2024	DATE -	REVISED -

**STATE OF ILLINOIS
DEPARTMENT OF TRANSPORTATION**

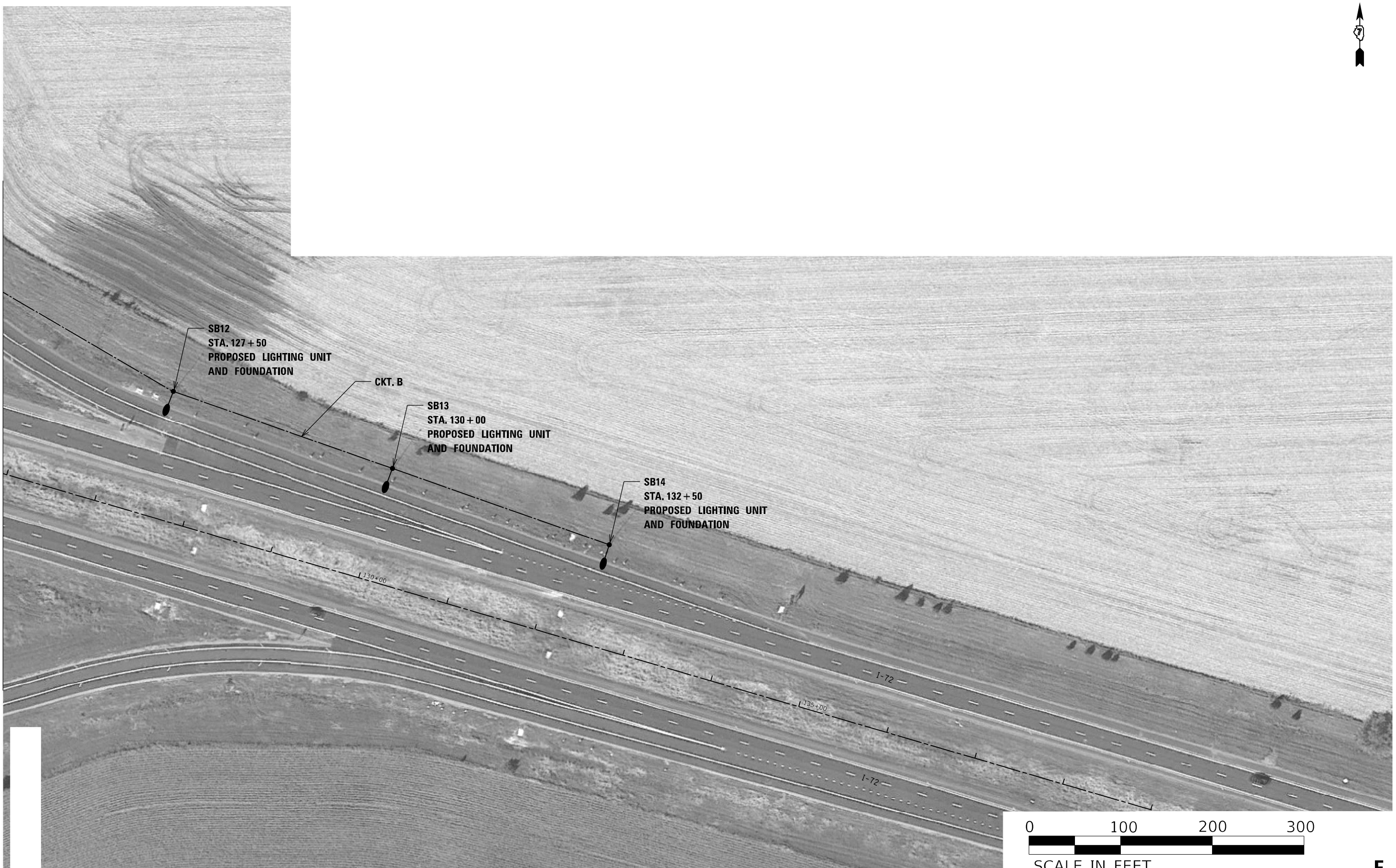
PROPOSED LIGHTING PLAN

SCALE: SHEET OF SHEETS STA. TO STA.

F.A.I. RTE.	SECTION	COUNTY	TOTAL SHEETS	SHEET NO.
72	D7 HIGHWAY LIGHTING 2024-1	MACON	15	13
ILLINOIS FED. AID PROJECT			CONTRACT NO. 74C82	



MATCHLINE SEE SHEET E-8



E-11

MODEL: Default
FILE: \\maile.pva\ultra-caw-bentley.com\P\INDOT\Documents\INDOT Offices\District 7\Projects\74C82\CADD\data\CAD\sheet\SD7-74C82_Light_05.dgn

USER NAME = jessica.hille	DESIGNED -	REVISED -
	DRAWN -	REVISED -
PLOT SCALE = 100,0000' / in.	CHECKED -	REVISED -
PLOT DATE = 2/1/2024	DATE -	REVISED -

**STATE OF ILLINOIS
DEPARTMENT OF TRANSPORTATION**

PROPOSED LIGHTING PLAN

SCALE: SHEET OF SHEETS STA. TO STA.

F.A.I. RTE.	SECTION	COUNTY	TOTAL SHEETS	SHEET NO.
72	D7 HIGHWAY LIGHTING 2024-1	MACON	15	14
CONTRACT NO. 74C82				
ILLINOIS FED. AID PROJECT				

Luminaire Performance Table

Project

Date	Contract Number	Section Number	County
11/14/2023	74C82	D7 HIGHWAY LIGHTING 2024-1	MACON
Marked Route Number		Municipality	
I-72		N/A	

Roadway

Lane Width	# of Lanes	Median Width	I.E.S Surface Classification	0-Zero Value
12	2	N/A	R3	0.07

Structure

Mounting Height	Arm Length	Set Back	Number of Luminaires (Highmast & Sign Lighting Only)
45 FT	2 FT	15 FT	N/A

Luminaire

Description	I.E.S. Lateral Distribution	I.E.S. Vertical Distribution	
ROADWAY LUMINAIRE, LED, OUTPUT DESIGNATION H	TYPE III	MEDIUM	
Total Light Loss Factor (LLF)	BUG Rating	Shields	Dimming Protocol
0.7	U = 0	N/A	10V

Layout

Spacing (to Nearest 5 Ft) Configuration (Opposite, Staggered, 1 Sided, or Median)	
240 FT	SINGLE SIDED

Performance

Average Illuminance, E_{AVE} (fc)	Uniformity Ratio, E_{AVE}/E_{MIN}		
0.8	3.0		
Average Luminance, L_{AVE} (cd/m ²)	Uniformity Ratio, L_{AVE}/L_{MIN}	Uniformity Ratio, L_{MAX}/L_{MIN}	Veiling Luminance Ratio, L_V/L_{MIN}
N/A	N/A	N/A	0.3:1

Light Trespass

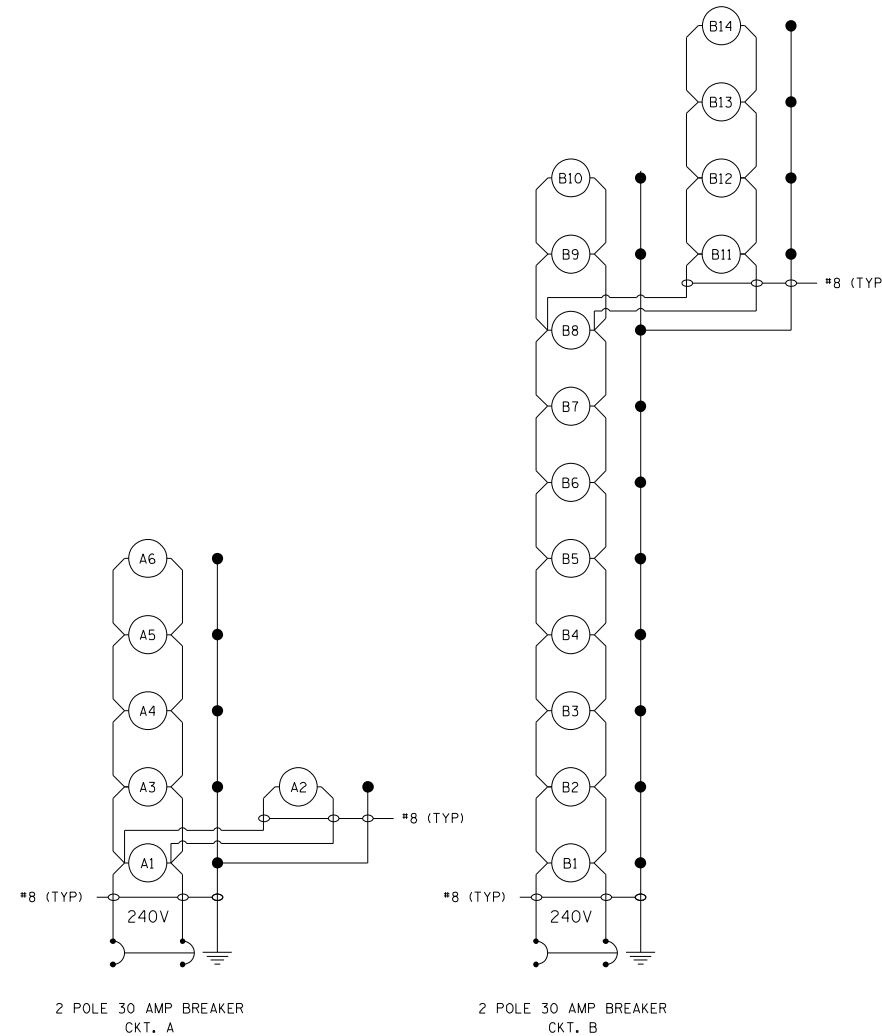
Distance to ROW (behind pole)	Max. Horizontal Illuminance at ROW, E	Max. Vertical Illuminance at ROW, E
N/A	N/A	N/A

Notes

1. Set Back is from Edge of Pavement (white line) except for sign luminaires when it is vertical and horizontal distance from the sign to the luminaire.
2. Lighting calculations shall be performed with all luminaires oriented toward and perpendicular to roadway.
3. Total Light Loss Factor (LLF) = the product of "Lumen Maintenance" (LLD) = 0.9, "Dirt Depreciation" (LDD) = 0.8, and "Equipment Factors" (EF) = 0.95.
4. Performance requirements shall be the minimum acceptable standards of photometric performance for the luminaire, based on the given conditions above.

CALCULATIONS ARE TO BE PERFORMED IN ONE DIRECTION ONLY.

COMPLIANCE WITH PERFORMANCE CRITERIA SHALL BE HELD TO ONE SIGNIFICANT DIGIT.



I-72 AND S. 4 BRIDGES RD.

PROPOSED LIGHTING CONTROLLER "S",
PEDESTAL MOUNTED, 240V, 60AMP

LEGEND:

- 1 PROPOSED LIGHTING UNIT
- GROUND ROD

NOTES:

1. ALL NECESSARY REVISIONS TO THE WIRING SHOWN ON THIS SHEET SHALL BE MADE AT NO ADDITIONAL COST TO THE DEPARTMENT AND TO THE SATISFACTION OF THE ENGINEER.

MODEL: Default
FILE: \\nafe\p\subject-pw-beadley.com\PI\INDOT\Documents\INDOT_offices\Director_7\Projects\74C82\CADDData\CAD\SheetSD1_74C82_Wiring_Diagram.dgn

USER NAME = jessica.wille	DESIGNED -	REVISED -
PLOT SCALE = 99.9989 * / in.	DRAWN -	REVISED -
PLOT DATE = 2/1/2024	CHECKED -	REVISED -
	DATE -	REVISED -

**STATE OF ILLINOIS
DEPARTMENT OF TRANSPORTATION**

WIRING DIAGRAM AND LUMINAIRE PERFORMANCE TABLE

SCALE: SHEET OF SHEETS STA. TO STA.

F.A.I. RTE.	SECTION	COUNTY	TOTAL SHEETS	SHEET NO.
72	D7 HIGHWAY LIGHTING 2024-1	MACON	15	15
CONTRACT NO. 74C82				
ILLINOIS FED. AID PROJECT				