

04-26-2024 LETTING ITEM 115

FOR INDEX OF SHEETS, SEE SHEET NO. 02

ADT (2023) = 7,800 (ILL 121)

ADT (2023) = 3,700 (ILL 105)

D7-97-006-24

STATE OF ILLINOIS
DEPARTMENT OF TRANSPORTATION

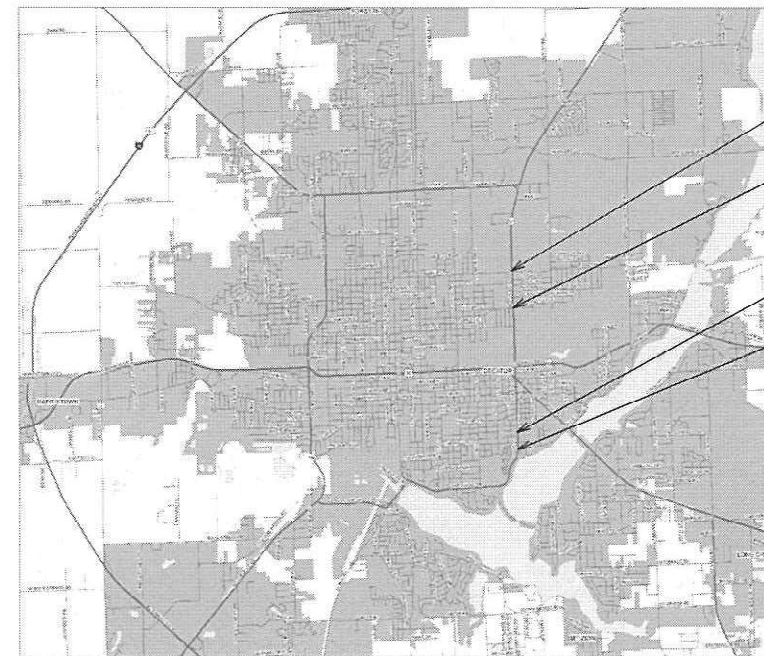
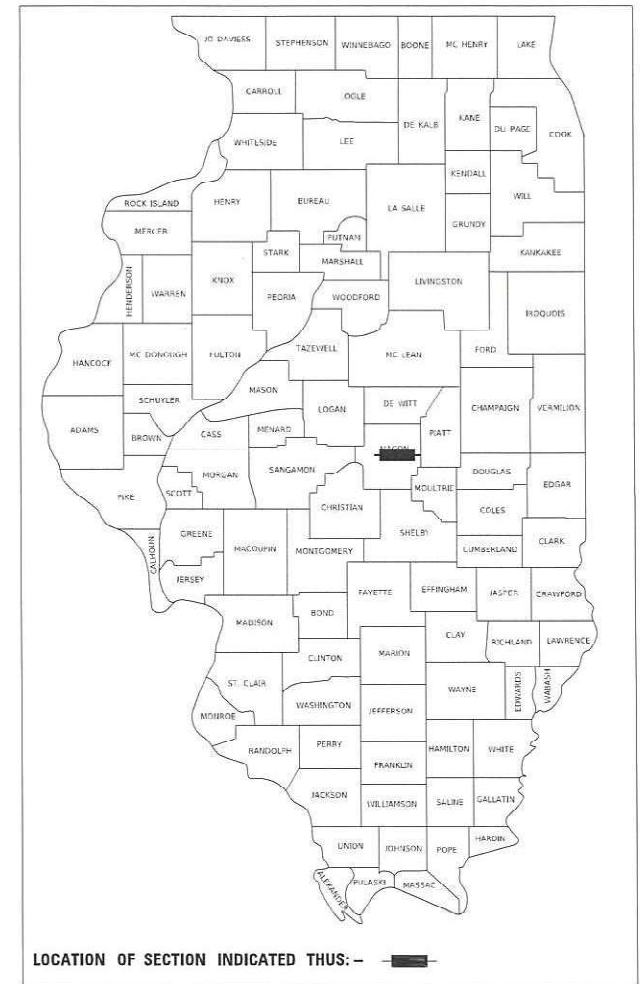
PROPOSED HIGHWAY PLANS

FAP ROUTE 320, 712A (ILL 121, 105)
SECTION D7 PATCHING 2024-3
PROJECT
PAVEMENT PATCHING
MACON COUNTY

C-97-006-24

F.A.P. RTE.	SECTION	COUNTY	TOTAL SHEETS	SHEET NO.
320, 712A	D7 PATCHING 2024-3	MACON	9	1
		ILLINOIS	CONTRACT NO. 74C74	

• 320, 712A

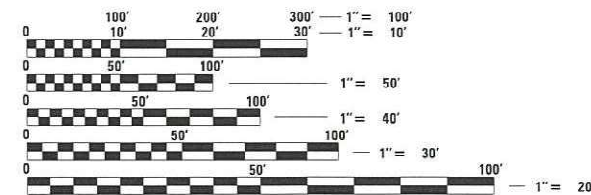


LOCATION 1
START ILL 121

END ILL 121

LOCATION 2
START ILL 105

END ILL 105



FULL SIZE PLANS HAVE BEEN PREPARED USING STANDARD ENGINEERING SCALES. REDUCED SIZED PLANS WILL NOT CONFORM TO STANDARD SCALES. IN MAKING MEASUREMENTS ON REDUCED PLANS, THE ABOVE SCALES MAY BE USED.

J.U.L.I.E.
JOINT UTILITY LOCATION INFORMATION FOR EXCAVATORS
1-800-892-0123
OR 811

PROJECT ENGINEER JACQUELYN SEALS
PROJECT MANAGER ASHLEY WOODS

CONTRACT NO. 74C74

STATE OF ILLINOIS
DEPARTMENT OF TRANSPORTATION

SUBMITTED FEBRUARY 1 20 24
Jeffrey P. Myrka REGIONAL ENGINEER
March 22, 2024
Eric A. Etk
ENGINEER OF DESIGN AND ENVIRONMENT
March 22, 2024
Stephen M. Seals
DIRECTOR OF HIGHWAYS PROJECT IMPLEMENTATION

PRINTED BY THE AUTHORITY
OF THE STATE OF ILLINOIS

GENERAL NOTES

THIS PROJECT IS LOCATED ON ILL 121 FROM GARFIELD AVE TO LOCUST ST. & ILL 105 0.1 MI N OF CANTRELL TO 0.1 MI S OF CANTRELL. THE WORK INCLUDED ON BOTH LOCATIONS IN SECTION D7 PATCHING 2024-3 CONSISTS OF PAVEMENT PATCHING, TRAFFIC CONTROL, AND ANY OTHER WORK NECESSARY TO COMPLETE THIS PROJECT.

THE QUANTITIES FOR PAVEMENT PATCHING ARE ESTIMATES. THE ACTUAL LOCATIONS AND QUANTITIES SHALL BE DETERMINED BY THE ENGINEER IN THE FIELD.

PATCHING REINFORCEMENT AND ALL TIE BAR THAT WILL BE USED ARE #6 3/4" REBAR.

THE COST OF RAISED REFLECTIVE PAVEMENT MARKER REMOVAL IS INCLUDED IN THE COST OF CLASS A PATCHING (SPECIAL), TYPE I-IV, 11"-13".

DETECTOR LOOPS REMOVED OR DAMAGED DUE TO PATCHING WILL BE REPLACED IN KIND AND PAID FOR AS DETECTOR LOOP TYPE 1. SAW CUTS WILL BE INCLUDED IN THE COST.

THE TRAFFIC SIGNAL ENGINEER AT THE ILLINOIS DEPARTMENT OF TRANSPORTATION SHALL BE NOTIFIED AT 217-342-8396 AT LEAST 72 HOURS PRIOR TO PERFORMING ANY WORK THAT WILL AFFECT TRAFFIC SIGNAL DETECTOR LOOPS.

INDEX OF SHEETS

SHEET NO.	ITEM
1	COVER SHEET
2	GENERAL NOTES, INDEX OF SHEETS & LIST OF STANDARDS
3	SUMMARY OF QUANTITIES
4	PATCHING SCHEDULES
5	LOCATION MAP 1
6	LOCATION MAP 2
7,8	CLASS A PATCHES (SPECIAL) DETAILS
9	TYPICAL APPLICATION OF DETECTOR LOOPS DETAILS

THE FOLLOWING STANDARDS ARE A PART OF THESE PLANS AND ARE INCLUDED AFTER SHEET NO. **STANDARD NO. DESCRIPTION**

000001-08	STANDARD SYMBOLS, ABBREVIATIONS AND PATTERNS
001001-02	AREAS OF REINFORCEMENT BARS
001006	DECIMAL OF AN INCH AND OF A FOOT
420001-10	PAVEMENT JOINTS
442001-04	CLASS A PATCHES
701101-05	OFF-ROAD OPERATIONS, MULTILANE, 15' (4.5M) TO 24" (600MM) FROM PAVEMENT
701106-02	OFF-ROAD OPERATIONS, MULTILANE, MORE THAN 15' (4.5 M) AWAY
701601-09	URBAN LANE CLOSURE, MULTILANE, 1W OR 2W WITH NONTRAVERSABLE MEDIAN
701602-10	URBAN LANE CLOSURE, MULTILANE, 2W WITH BIDIRECTIONAL LEFT TURN LANE
701701-10	URBAN LANE CLOSURE MULTILANE INTERSECTION
701901-09	TRAFFIC CONTROL DEVICES
886001-01	DETECTOR LOOP INSTALLATIONS
886006-01	TYPICAL LAYOUTS FOR DETECTION LOOPS

REV. - MS

MODEL: Default
 FILE: Macos:pr:\illdot\paw_bentley.com\pwwd\dot\documents\dot_offices\dot\dot\Project\74C74\CAD\data\CAD\sheet\074C74-01-genote.dgn

USER NAME = Mona.Steffen	DESIGNED -	REVISED -	STATE OF ILLINOIS DEPARTMENT OF TRANSPORTATION	GENERAL NOTES INDEX OF SHEETS	F.A.P. RTE.	SECTION	COUNTY	TOTAL SHEETS	SHEET NO.	
	DRAWN -	REVISED -			*	D7 PATCHING 2024-3	MACON	9	2	
PLOT SCALE = 100.0000' / in.	CHECKED -	REVISED -			74C74		ILLINOIS FED. AID PROJECT			
PLOT DATE = 1/25/2024	DATE -	REVISED -			SCALE:	SHEET	OF 9 SHEETS	STA.	TO STA.	

100% STATE

100% STATE

SUMMARY OF QUANTITIES			TOTAL QUANTITIES	CONSTRUCTION TYPE CODE		
CODE NO	ITEM	UNIT		0006		
44213000	PATCHING REINFORCEMENT	SO YD	901.5	901.5		
44213200	SAW CUTS	FOOT	2148.0	2148.0		
44213204	TIE BARS 3/4"	EACH	234	234		
67100100	MOBILIZATION	L SUM	1	1		
70102630	TRAFFIC CONTROL AND PROTECTION, STANDARD	L SUM	1	1		
	701601					
70102632	TRAFFIC CONTROL AND PROTECTION, STANDARD	L SUM	1	1		
	701602					
70102635	TRAFFIC CONTROL AND PROTECTION, STANDARD	L SUM	1	1		
	701701					
70107025	CHANGEABLE MESSAGE SIGN	CAL DA	56	56		
* 88600100	DETECTOR LOOP, TYPE I	FOOT	75	75		
X4420581	CLASS A PATCHES, TYPE I, 13 INCH (SPECIAL)	SO YD	16	16		

SUMMARY OF QUANTITIES			TOTAL QUANTITIES	CONSTRUCTION TYPE CODE		
CODE NO	ITEM	UNIT		0006		
X4420583	CLASS A PATCHES, TYPE II, 13 INCH (SPECIAL)	SO YD	229.5	229.5		
X4420585	CLASS A PATCHES, TYPE III, 13 INCH (SPECIAL)	SO YD	16	16		
X4420587	CLASS A PATCHES, TYPE IV, 13 INCH (SPECIAL)	SO YD	640	640		

* SPECIALTY ITEM

MODEL: Default
 FILE: \\mafe-pw-bentley.com\PW\DOT\Documents\DOT Office\Director_7\Projects\74C74\CADDData\CAD\Sheet\074C74-1-1-500.dgn

USER NAME = Mona.Steffen	DESIGNED -	REVISED -
PLOT SCALE = 100,0000' / in.	DRAWN -	REVISED -
PLOT DATE = 1/25/2024	CHECKED -	REVISED -
	DATE -	REVISED -

**STATE OF ILLINOIS
DEPARTMENT OF TRANSPORTATION**

SUMMARY OF QUANTITIES

SCALE: SHEET OF SHEETS STA. TO STA.

F.A.P. RTE.	SECTION	COUNTY	TOTAL SHEETS	SHEET NO.
*	D7 PATCHING 2024-3	MACON	9	3
			CONTRACT NO. 74C74	
			ILLINOIS FED. AID PROJECT	

PATCHING SCHEDULE LOCATION 1					X4420581 CLASS A PATCHES, TY I, 13 INCH (SPECIAL)	X4420583 CLASS A PATCHES, TY II, 13 INCH (SPECIAL)	X4420585 CLASS A PATCHES, TY III, 13 INCH (SPECIAL)	X4420587 CLASS A PATCHES, TY IV, 13 INCH (SPECIAL)	44213204 TIE BARS, 3/4"	44213000 PATCHING REINFORCEMENT	44213200 SAW CUTS
PATCH NUMBER	LANE	STATION	LENGTH	WIDTH	TYPE 1	TYPE 2	TYPE 3	TYPE 4	EACH	SQ YD	FOOT
			FOOT	FOOT	SQ YD	SQ YD	SQ YD	SQ YD			
1	NBPL	01+27	6.0	12.0		8.0				8.0	36.0
2	NBDL	03+40	6.0	12.0		8.0				8.0	36.0
3	NBDL	05+25	6.0	12.0		8.0				8.0	36.0
4	NBDL	07+70	6.0	12.0		8.0				8.0	36.0
5	NBPL	07+70	6.0	12.0		8.0				8.0	36.0
6	NBPL	08+70	8.0	12.0		8.0				8.0	40.0
7	NBDL	08+70	8.0	12.0		10.7				10.7	40.0
8	NBDL	12+30	8.0	12.0		10.7				10.7	40.0
9	NBPL	12+30	8.0	12.0		10.7				10.7	40.0
10	NBDL	14+65	8.0	12.0		10.7				10.7	40.0
11	NBPL	14+65	8.0	12.0		10.7				10.7	40.0
12	NBDL	17+45	10.0	12.0		13.3				13.3	44.0
13	NBPL	17+45	10.0	12.0		13.3				13.3	44.0
14	SBDL	17+45	10.0	12.0		13.3				13.3	44.0
15	SBPL	17+45	10.0	12.0		13.3				13.3	44.0
16	SBDL	14+65	8.0	12.0		10.7				10.7	40.0
17	SBPL	14+65	8.0	12.0		10.7				10.7	40.0
18	SBDL	06+05	6.0	12.0		8.0				8.0	36.0
19	SBPL	06+05	6.0	12.0		8.0				8.0	36.0
20	SBDL	05+75	60.0	12.0				80.0	29.0	80.0	144.0
21	SBPL	05+75	60.0	12.0				80.0	29.0	80.0	144.0
22	SBDL	03+40	6.0	12.0		8.0				8.0	36.0
23	SBPL	03+40	6.0	12.0		8.0				8.0	36.0
24	SBDL	02+40	8.0	12.0		10.7				10.7	40.0
25	SBPL	02+40	8.0	12.0		10.7				10.7	40.0
26	SBPL	02+25	12.0	12.0			16.0			16.0	48.0
27	SBDL	02+00	6.0	6.0	4.0					4.0	24.0
28	SBPL	02+00	6.0	6.0	4.0					4.0	24.0
29	SBDL	01+75	6.0	6.0	4.0					4.0	24.0
30	SBPL	01+75	6.0	6.0	4.0					4.0	24.0

PATCHING SCHEDULE CONT. LOCATION 2					X4420581 CLASS A PATCHES, TY I, 13 INCH (SPECIAL)	X4420583 CLASS A PATCHES, TY II, 13 INCH (SPECIAL)	X4420585 CLASS A PATCHES, TY III, 13 INCH (SPECIAL)	X4420587 CLASS A PATCHES, TY IV, 13 INCH (SPECIAL)	44213204 TIE BARS, 3/4"	44213000 PATCHING REINFORCEMENT	44213200 SAW CUTS
PATCH NUMBER	LANE	STATION	LENGTH	WIDTH	TYPE 1	TYPE 2	TYPE 3	TYPE 4	EACH	SQ YD	FOOT
			FOOT	FOOT	SQ YD	SQ YD	SQ YD	SQ YD			
1	NBDL	00+00	100.0	12.0				133.3	49.0	133.3	224.0
2	NBPL	00+00	100.0	12.0				133.3	49.0	133.3	224.0
3	NBDL	00+80	80.0	12.0				106.7	39.0	106.7	184.0
4	NBPL	00+80	80.0	12.0				106.7	39.0	106.7	184.0

TOTAL:	16.0	229.5	16.0	640.0	234.0	901.5	2148.0
---------------	------	-------	------	-------	-------	-------	--------

MODEL: Default
 FILE: \\nafe-pw-beadwy.com\P\INDOT\Documents\DOT_Offices\Director_7\Projects\74C74\CADD\DATA\CAD\Sheet\DOT\74C74-4-1-1-1-1-1-1.dgn

USER NAME = Mona.Steffen	DESIGNED -	REVISED -
	DRAWN -	REVISED -
PLOT SCALE = 100,0000 ' / in.	CHECKED -	REVISED -
PLOT DATE = 1/25/2024	DATE -	REVISED -

**STATE OF ILLINOIS
DEPARTMENT OF TRANSPORTATION**

SCHEDULE OF QUANTITIES				
SCALE:	SHEET	OF	SHEETS	STA. TO STA.

F.A.P. RTE.	SECTION	COUNTY	TOTAL SHEETS	SHEET NO.
-	D7 PATCHING 2024-3	MACON	9	4
74C74				
ILLINOIS FED. AID PROJECT				

START OF PROJECT



END OF PROJECT

MODEL: Default
 FILE NAME: p:\ultra-cw-bead\p\com\p\w\DOT\Documents\DOT Office\Dir\dir: 7\Projects\74C74\CADD\DATA\CAD\Sheet\74C74\Sheet-locdb\map.dgn

USER NAME = Mona.Steffen	DESIGNED -	REVISED -
	DRAWN -	REVISED -
PLOT SCALE = 100,0000' / in.	CHECKED -	REVISED -
PLOT DATE = 1/25/2024	DATE -	REVISED -

**STATE OF ILLINOIS
DEPARTMENT OF TRANSPORTATION**

**MAP OF LOCATION
ILL 121**

SCALE: SHEET OF SHEETS STA. TO STA.

F.A.P. RTE.	SECTION	COUNTY	TOTAL SHEETS	SHEET NO.
*	D7 PATCHING 2024-3	MACON	9	5
			CONTRACT NO. 74C74	
ILLINOIS FED. AID PROJECT				

START OF PROJECT



END OF PROJECT

MODEL: Default
 FILE: \\mafe-pw-bentley.com\P\W\DOT\Documents\DOT_Offices\Dir\dir_7\Projects\74C74\CADD\DATA\CAD\Sheet\DOT\74C74\Sheet-Location\maps.dgn

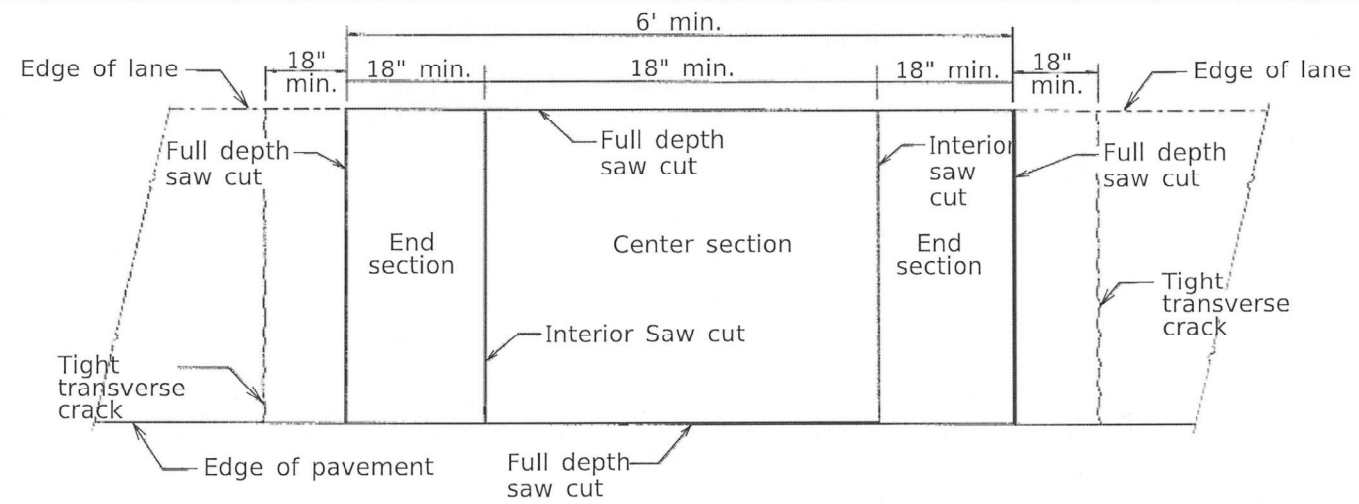
USER NAME = Mona.Steffen	DESIGNED -	REVISED -
	DRAWN -	REVISED -
PLOT SCALE = 100,0000' / in.	CHECKED -	REVISED -
PLOT DATE = 1/25/2024	DATE -	REVISED -

**STATE OF ILLINOIS
DEPARTMENT OF TRANSPORTATION**

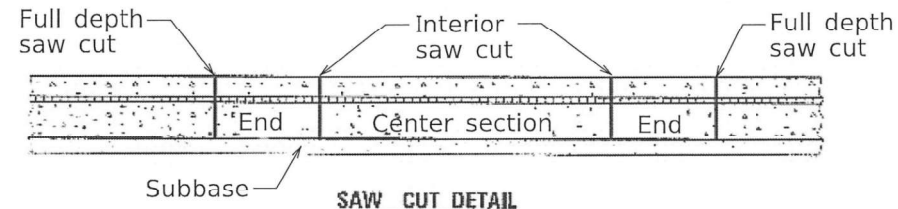
**MAP OF LOCATION
ILL 105**

SCALE: SHEET OF SHEETS STA. TO STA.

F.A.P. RTE.	SECTION	COUNTY	TOTAL SHEETS	SHEET NO.
*	D7 PATCHING 2024-3	MACON	9	6
			CONTRACT NO. 74C74	
ILLINOIS FED. AID PROJECT				



PAVEMENT SAWING DETAIL



SAW CUT DETAIL

GENERAL NOTES

Interior saw cuts will be included in the cost of "CLASS A PATCHES (SPECIAL)."

When patching two adjacent lanes in one operation, the longitudinal joint shall be a longitudinal sawed joint as detailed on Standard 422001-04, however the groove may be either performed or sawed.

The #6 tie bars to be drilled & grouted into the existing pavement shall be included in the cost of " CLASS A PATHCES (SPECIAL)."

MODEL: Default
 FILE NAME: p:\project-pw-bead\paw.com\PIV\DOT\Documents\DOT Office\Director_7\Project\74C74\CADD\DATA\CAD\Sheet\DOT\74C74-Left-Details.dgn

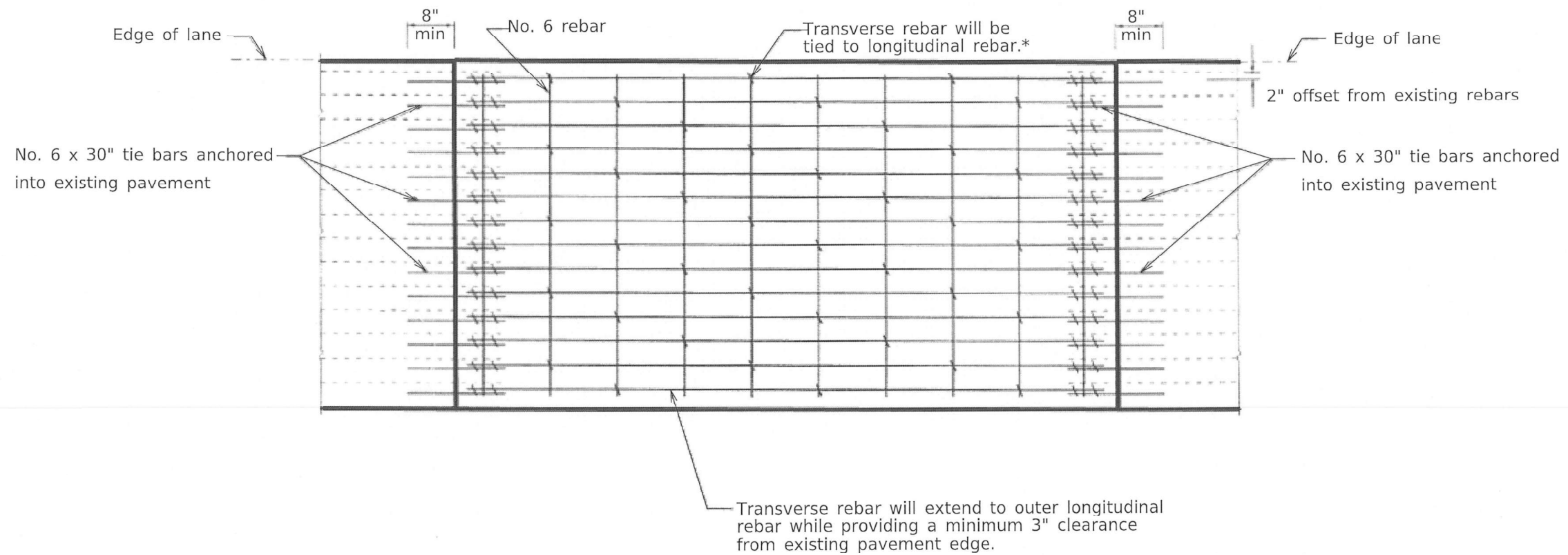
USER NAME = Mona.Steffen	DESIGNED -	REVISED -
	DRAWN -	REVISED -
PLOT SCALE = 100,0000' / in.	CHECKED -	REVISED -
PLOT DATE = 1/25/2024	DATE -	REVISED -

**STATE OF ILLINOIS
DEPARTMENT OF TRANSPORTATION**

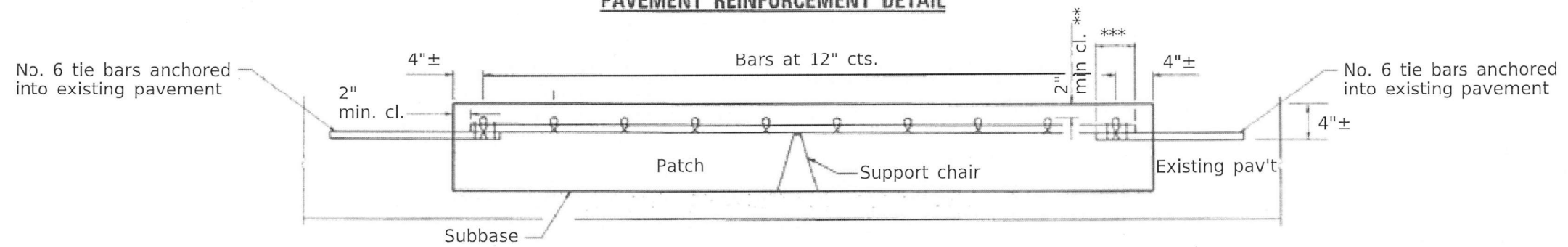
CLASS A PATCHES (SPECIAL)

SCALE: SHEET OF SHEETS STA. TO STA.

F.A.P. RTE.	SECTION	COUNTY	TOTAL SHEETS	SHEET NO.
	D7 PATCHING 2024-3	MACON	9	7
			CONTRACT NO. 74C74	
ILLINOIS FED. AID PROJECT				



PAVEMENT REINFORCEMENT DETAIL



PATCHING DETAIL

- * Every 3rd intersection must be tied.
- ** When the minimum clearance cannot be obtained with the transverse bar on top then the transverse rebar shall be tied to the bottom of the longitudinal rebar.
- *** Minimum lap length is 18"

GENERAL NOTES

Interior saw cuts will be included in the cost of "CLASS A PATCHES (SPECIAL)."
 The #6 tie bars to be drilled & grouted into the existing pavement shall be included in the cost of "CLASS A PATCHES (SPECIAL)."

MODEL: Default
 FILE: \\maile... \public\paw... \com\PIV\DOT\Documents\DOT Office\Director... \Projects\74C74\CADD\DATA\CAD\Sheet\74C74-Left-detail.dgn

USER NAME = Mona.Steffen	DESIGNED -	REVISED -
	DRAWN -	REVISED -
PLOT SCALE = 100,0000' / in.	CHECKED -	REVISED -
PLOT DATE = 1/25/2024	DATE -	REVISED -

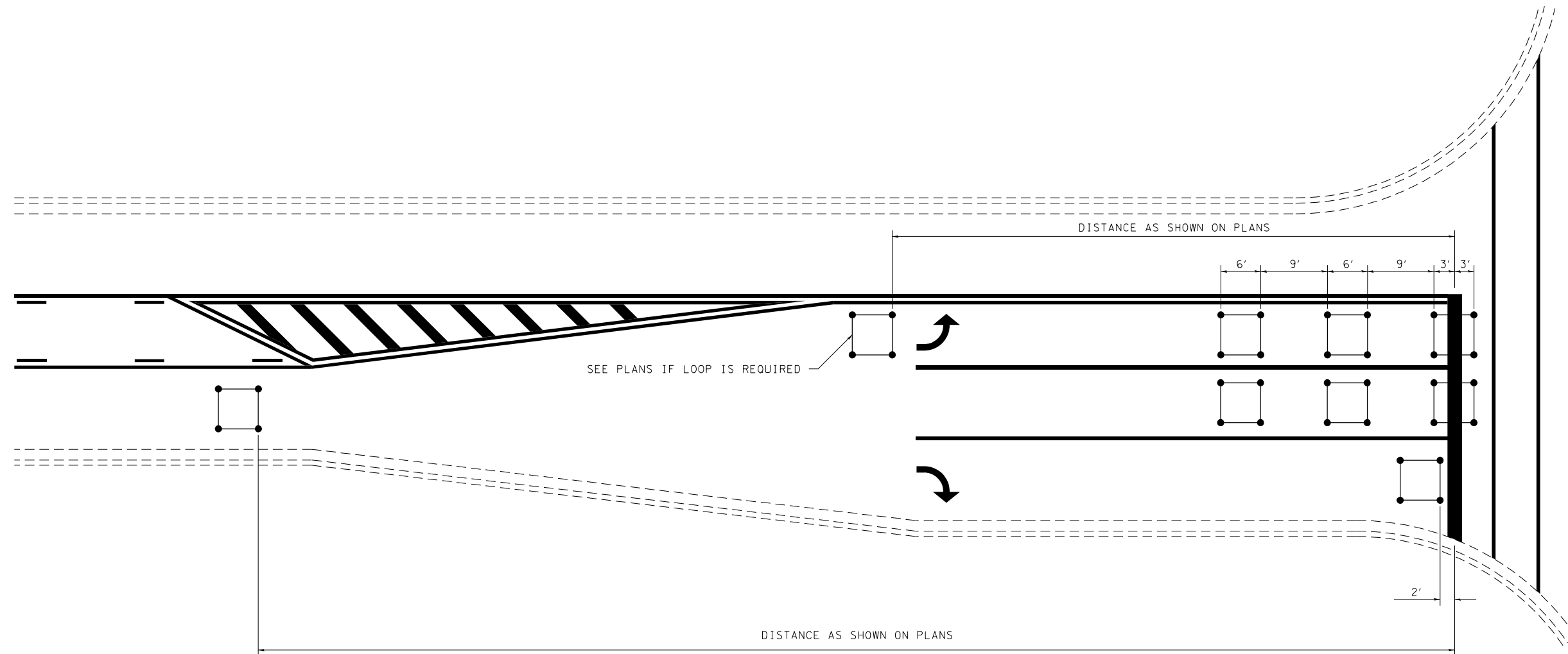
**STATE OF ILLINOIS
 DEPARTMENT OF TRANSPORTATION**

CLASS A PATCHES (SPECIAL)

SCALE: SHEET OF SHEETS STA. TO STA.

F.A.P. RTE.	SECTION	COUNTY	TOTAL SHEETS	SHEET NO.
	D7 PATCHING 2024-3	MACON	9	8
74C74				
ILLINOIS FED. AID PROJECT				

TYPICAL APPLICATION OF DETECTOR LOOPS



NOTE:

1. EACH LOOP SHALL HAVE ITS OWN HOMERUN TO THE GULFBOX/HANDHOLE.
2. LOOPS SHOULD BE CENTERED IN EACH LANE.
3. USE 6' BY 6' LOOPS FOR LANE WIDTHS OF 11' OR GREATER.
4. USE 5' BY 5' LOOPS IF LANE WIDTH IS LESS THAN 11'.

NOT TO SCALE

DISTRICT 7 DETAIL NO. 88600100

FILE NAME =	USER NAME = Mono.Steffen	DESIGNED -	REVISED - MKS 4-08
p:\1\idot-pw.bentley.com\PWIDOT\Documents\IDOT Offices\District 7\Projects\74C74\CADD\Drawings\Drawings\74C74-shr-details.dgn		CHECKED -	REVISED -
	PLOT SCALE = 100.0000' / in.	DATE -	REVISED -
	PLOT DATE = 1/25/2024		

**STATE OF ILLINOIS
DEPARTMENT OF TRANSPORTATION**

TYPICAL APPLICATIONS OF DETECTOR LOOPS

SCALE: SHEET NO. OF SHEETS STA. TO STA.

F.A.P. RTE.	SECTION	COUNTY	TOTAL SHEETS	SHEET NO.
*	D7 PATCHING 2024-3	MACON	9	9
CONTRACT NO. 74C74				
FED. ROAD DIST. NO. ILLINOIS FED. AID PROJECT				

*320, 712A