

STATE OF ILLINOIS
DEPARTMENT OF TRANSPORTATION

F.A. RTE.	SECTION	COUNTY	TOTAL SHEETS	SHEET NO.
	D7 PATCHING 2024-1	WAYNE	4	1
FAP 328/821		ILLINOIS	CONTRACT NO. 74C72	

FOR INDEX OF SHEETS, SEE SHEET NO. 2

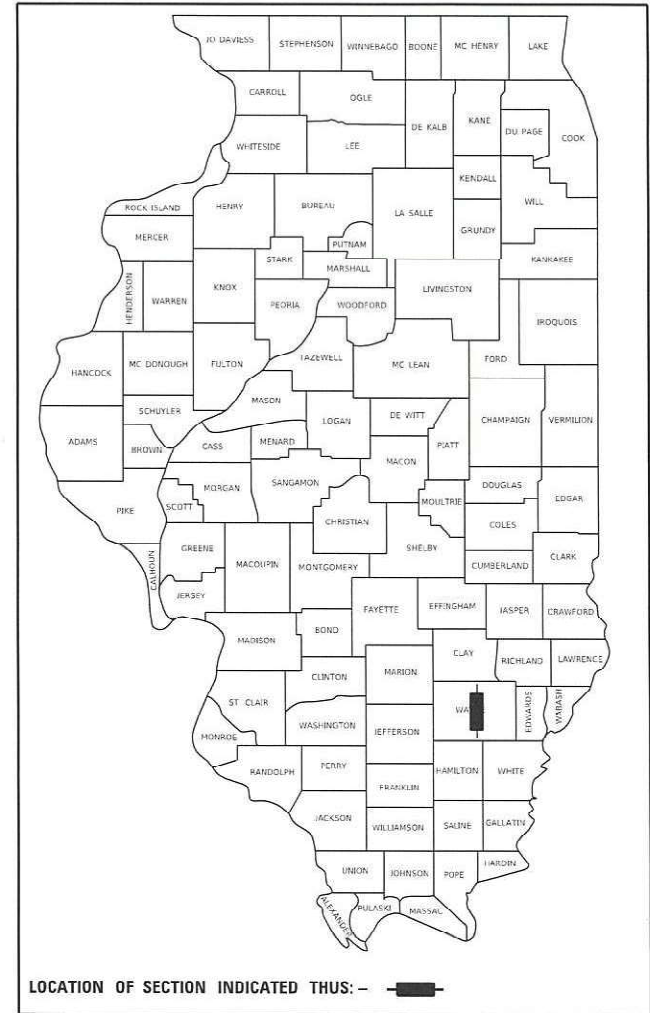
ADT = 3550

PROPOSED HIGHWAY PLANS

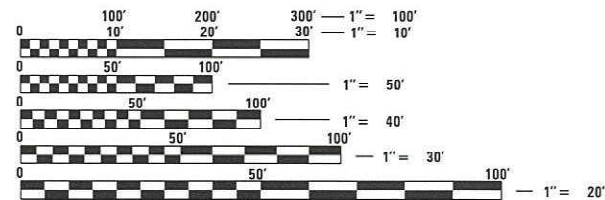
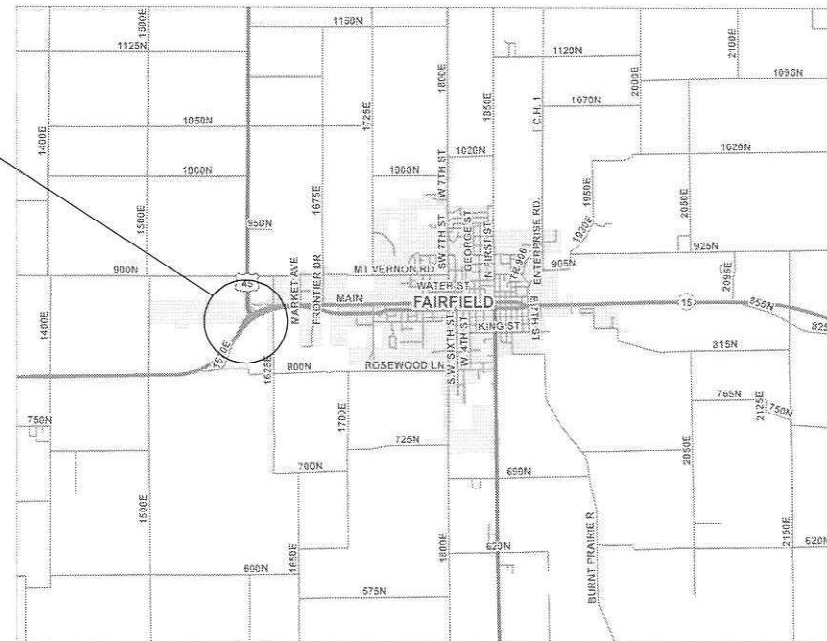
FAP ROUTE 328, 821 (US 45, ILL 15)
SECTION D7 PATCHING 2024-1

PATCHING
WAYNE COUNTY

C-97-004-24



FAP ROUTES 328 & 821
(US RTE. 45 & IL RTE. 15)



FULL SIZE PLANS HAVE BEEN PREPARED USING STANDARD ENGINEERING SCALES. REDUCED SIZED PLANS WILL NOT CONFORM TO STANDARD SCALES. IN MAKING MEASUREMENTS ON REDUCED PLANS, THE ABOVE SCALES MAY BE USED.

J.U.L.I.E.
JOINT UTILITY LOCATION INFORMATION FOR EXCAVATORS
1-800-892-0123
OR 811

PROJECT ENGINEER BRIAN LEWIS
PROJECT MANAGER JACKIE WILLENBURG

GROSS LENGTH = 12566.4 FT. = 2.38 MILE
NET LENGTH = 12566.4 FT. = 2.36 MILE

CONTRACT NO. 74C72

STATE OF ILLINOIS
DEPARTMENT OF TRANSPORTATION

SUBMITTED February 5 20 24
Jeffrey P. Myer
REGIONAL ENGINEER

March 22, 2024
Scott A. Etk
ENGINEER OF DESIGN AND ENVIRONMENT

March 22, 2024
Stephen McNeill
DIRECTOR OF HIGHWAYS PROJECT IMPLEMENTATION

PRINTED BY THE AUTHORITY
OF THE STATE OF ILLINOIS

GENERAL NOTES

THIS PROJECT IS LOCATED AT THE INTERSECTION US 45 AND IL 15, WEST OF FAIRFIELD IN WAYNE COUNTY,

THE WORK INCLUDED IN SECTION D7 PATCHING 2024-1 CONSISTS OF CLASS B PAVEMENT PATCHING, AND ANY OTHER WORK NECESSARY TO COMPLETE THIS PROJECT.

THE ACTUAL LOCATIONS OF PAVEMENT PATCHING AND FINAL QUANTITIES WILL BE DETERMINED BY THE ENGINEER IN THE FIELD.

- 1 COVER SHEET
- 2 GENERAL NOTES, INDEX OF SHEETS & LIST OF STANDARDS
- 3 SUMMARY OF QUANTITIES
- 4 PATCHING SCHEDULES

THE FOLLOWING STANDARDS ARE A PART OF THESE PLANS AND ARE INCLUDED FOLLOWING THE LAST NUMBERED SHEET OF THE PLANS.

<u>STD. NO.</u>	<u>DESCRIPTION</u>
000001-08	STANDARD SYMBOLS, ABBREVIATIONS AND PATTERNS
001001-02	AREAS OF REINFORCEMENT BARS
001006	DECIMAL OF AN INCH AND A FOOT
420001-10	PAVEMENT JOINTS
420701-03	PAVEMENT WELDED WIRE REINFORCEMENT
442101-09	CLASS B PATCHES
701006-05	OFF-RD OPERATIONS, 2L, 2W, 15' (4.5 m) TO 24" (600 mm) FROM PAVEMENT EDGE
701011-04	OFF-RD MOVING OPERATIONS, 2L, 2W, DAY ONLY
701101-05	OFF-RD OPERATIONS, MULTILANE, 15' (4.5 m) TO 24" (600 mm) FROM PAVEMENT EDGE
701106-02	OFF-RD OPERATIONS, MULTILANE, MORE THEN 15' (4.5 m) AWAY
701201-05	LANE CLOSURE, 2L, 2W, DAY ONLY FOR SPEEDS ≥ 45 MPH
701422-10	LANE CLOSURE MULTILANE, FOR SPEEDS ≥ 45 MPH TO 55 MPH
701901-09	TRAFFIC CONTROL DEVICES
780001-05	TYPICAL PAVEMENT MARKINGS

REV. - MS

MODEL: Default
FILE NAME: \\pww\pww\benitez.com\PI\DOT\Docu\mst\DOT_C\Files\Dir\ct_7\Project\74C72\CADD\3\3\CADD\Sheet\74C72-sht-ge-notes.dgn

USER NAME = mona.Steffen	DESIGNED -	REVISED -
	DRAWN -	REVISED -
PLOT SCALE = 100.0000' / in.	CHECKED -	REVISED -
PLOT DATE = 2/5/2024	DATE -	REVISED -

**STATE OF ILLINOIS
DEPARTMENT OF TRANSPORTATION**

**INDEX OF SHEETS AND
GENERAL NOTES**

SCALE: SHEET OF SHEETS STA. TO STA.

F.A. RTE.	SECTION	COUNTY	TOTAL SHEETS	SHEET NO.
	D7 PATCHING 2024-1	WAYNE	4	2
FAP 328/821				CONTRACT NO. 74C72
		ILLINOIS	FED. AID PROJECT	

100% STATE

SUMMARY OF QUANTITIES			TOTAL QUANTITIES	CONSTRUCTION TYPE CODE		
CODE NO	ITEM	UNIT		0005		
44200050	WELDED WIRE REINFORCEMENT	SO YD	1206	1206		
44200982	CLASS B PATCHES, TYPE II, 11 INCH	SO YD	255	255		
44200986	CLASS B PATCHES, TYPE III, 11 INCH	SO YD	159	159		
44200988	CLASS B PATCHES, TYPE IV, 11 INCH	SO YD	1047	1047		
44201299	DOWEL BARS 1 1/2"	EACH	1326	1326		
44213200	SAW CUTS	FOOT	3567	3567		
44213204	TIE BARS 3/4"	EACH	293	293		
67100100	MOBILIZATION	L SUM	1	1		
70100320	TRAFFIC CONTROL AND PROTECTION, STANDARD 701422	L SUM	1	1		
70100450	TRAFFIC CONTROL AND PROTECTION, STANDARD 701201	L SUM	1	1		
70107025	CHANGEABLE MESSAGE SIGN	CAL DA	42	42		
* 78001180	PAINT PAVEMENT MARKING - LINE 24"	FOOT	48	48		
Z0017099	DOWEL BAR ASSEMBLY	EACH	35	35		

SUMMARY OF QUANTITIES			TOTAL QUANTITIES	CONSTRUCTION TYPE CODE		
CODE NO	ITEM	UNIT		0005		

* SPECIALTY ITEM

MODEL: Default
 FILE: \\nafrs-pw-beadefy.com\P\INDOT\Documents\DOT_0ffices\Director_7\Projects\74C72\CADDData\CAD\Sheets\74C72-shr-S00.dgn

USER NAME = mona.Steffen	DESIGNED -	REVISED -
	DRAWN -	REVISED -
PLOT SCALE = 100,0000 ' / in.	CHECKED -	REVISED -
PLOT DATE = 2/5/2024	DATE -	REVISED -

**STATE OF ILLINOIS
DEPARTMENT OF TRANSPORTATION**

SUMMARY OF QUANTITIES				
SCALE:	SHEET	OF	SHEETS	STA. TO STA.

F.A. RTE.	SECTION	COUNTY	TOTAL SHEETS	SHEET NO.
FAP 328/821	D7 PATCHING 2024-1	WAYNE	4	3
			CONTRACT NO. 74C72	
			ILLINOIS FED. AID PROJECT	

Class B Patching

IL 15													
Patch Number	Lane	Station	Length (FT)	Width (FT)	Plan Depth (IN)	Type 2 (SQ YD)	Type 3 (SQ YD)	Type 4 (SQ YD)	Tie Bars (EA)	Pavt Fab (SQ YD)	Saw Cut (FT)	Dowels (EA)	Construction Dowels (EA)
1	WBDL	83+86	15.0	11.0	11.0		18.3			18.3	64.5	20	
2	WBDL	85+82	6.0	11.0	11.0	7.3					46.5	20	
3	WBDL	86+81	6.0	11.0	11.0	7.3					46.5	20	
4	WBDL	89+76	20.0	11.0	11.0		24.4		6	24.4	74.5	20	
5	WBDL	90+76	27.0	11.0	11.0			33.0	8	33.0	88.5	20	10
6	WBDL	91+69	20.0	11.0	11.0		24.4		6	24.4	74.5	20	
7	WBDL	92+00	80.0	11.0	11.0			97.8	26	97.8	194.5	20	30
8	WBDL	92+75	6.0	11.0	11.0	7.3					46.5	20	
9	WBDL	97+37	27.0	11.0	11.0			33.0	8	33.0	88.5	20	10
10	WBDL	100+30	65.0	11.0	11.0			79.4	21	79.4	164.5	20	30
11	WBDL	114+94	8.0	15.0	11.0	13.3					62.5	28	
12	WBPL	83+86	8.0	11.0	11.0	9.8					42.5	20	
13	WBPL	85+82	6.0	11.0	11.0	7.3					40.5	20	
14	WBPL	86+81	6.0	11.0	11.0	7.3					40.5	20	
15	WBPL	87+81	6.0	11.0	11.0	7.3					46.5	20	
16	WBPL	89+76	20.0	11.0	11.0		24.4		6	24.4	54.5	20	
17	WBPL	90+76	12.0	11.0	11.0	14.7					46.5	20	
18	WBPL	91+69	11.0	11.0	11.0	13.4					45.5	20	
19	WBPL	92+61	8.0	11.0	11.0	9.8					50.5	20	
20	WBPL	92+75	10.0	11.0	11.0	12.2					44.5	20	
21	WBPL	97+37	27.0	11.0	11.0			33.0	8	33.0	61.5	20	10
22	WBPL	100+30	65.0	11.0	11.0			79.4	21	79.4	99.5	20	30
23	WBPL	103+87	6.0	11.0	11.0	7.3					46.5	20	
24	WBPL	104+95	50.0	11.0	11.0			61.1	16	61.1	134.5	20	20
25	EBDL	80+23	6.0	11.0	11.0	7.3					40.5	20	
26	EBDL	80+91	10.0	11.0	11.0	12.2					44.5	20	
27	EBDL	86+72	6.0	11.0	11.0	7.3					46.5	20	
28	EBDL	88+46	6.0	11.0	11.0	7.3					46.5	20	
29	EBDL	89+58	6.0	11.0	11.0	7.3					46.5	20	
30	EBDL	91+71	6.0	11.0	11.0	7.3					46.5	20	
31	EBDL	95+09	24.0	11.0	11.0			29.3	7	29.3	58.5	20	10
32	EBDL	97+48	6.0	11.0	11.0	7.3					46.5	20	
33	EBDL	99+30	25.0	11.0	11.0			30.6	7	30.6	84.5	20	10
34	EBDL	103+19	15.0	11.0	11.0			18.3		18.3	64.5	20	
35	EBDL	103+44	30.0	11.0	11.0			36.7	9	36.7	94.5	20	10
36	EBDL	105+95	6.0	11.0	11.0	7.3					46.5	20	
37	EBPL	80+23	6.0	11.0	11.0	7.3					46.5	20	
38	EBPL	80+91	10.0	11.0	11.0	12.2					54.5	20	
39	EBPL	95+09	6.0	11.0	11.0	7.3					46.5	20	
SB US45/EB IL 15 Ramp													
40	SBDL	99+50	20.0	11.0	11.0		24.4		6	24.4	54.5	20	
41	SBPL	99+50	20.0	11.0	11.0		24.4		6	24.4	74.5	20	
42	SBDL	100+20	6.0	11.0	11.0	7.3					40.5	20	
43	SBPL	100+20	6.0	11.0	11.0	7.3					46.5	20	
44	SBDL	101+07	6.0	11.0	11.0	7.3					46.5	20	
45	SBDL	102+80	200.0	12.0	11.0			266.7	66	266.7	237.5	110	9
46	SBPL	102+80	200.0	12.0	11.0			266.7	66	266.7	437.5	110	9
EB IL 15/NB US 45 Ramp													
47	NBL	4+08	6.0	14.0	11.0	9.3					55.5	24	
48	NBL	4+67	6.0	14.0	11.0	9.3					55.5	24	
TOTAL						255	159	1047	293	1206	3567	1326	35

MODEL: Default
 FILE: \\na16c-pw-bentley.com\FW\DOT\Documents\DOT_Offices\Dir\dir_7\Project\74C72\CADDData\CAD\Sheet\74C72-sbr-schedule.dgn

USER NAME = mona.Steffen	DESIGNED -	REVISED -
	DRAWN -	REVISED -
PLOT SCALE = 100,0000 ' / in.	CHECKED -	REVISED -
PLOT DATE = 2/5/2024	DATE -	REVISED -

**STATE OF ILLINOIS
DEPARTMENT OF TRANSPORTATION**

SCHEDULE OF QUANTITIES

SCALE: SHEET OF SHEETS STA. TO STA.

F.A. RTE.	SECTION	COUNTY	TOTAL SHEETS	SHEET NO.
	D7 PATCHING 2024-1	WAYNE	4	4
FAP 328/821			CONTRACT NO. 74C72	
ILLINOIS FED. AID PROJECT				