

STATE OF ILLINOIS
DEPARTMENT OF TRANSPORTATION

F.A.P. RTE.	SECTION	COUNTY	TOTAL SHEETS	SHEET NO.
-	(107, 108, 109)Q	MACOUPIN	31	1
		ILLINOIS	CONTRACT NO. 72265	

*608, 761, 765 (IL 108, 111)

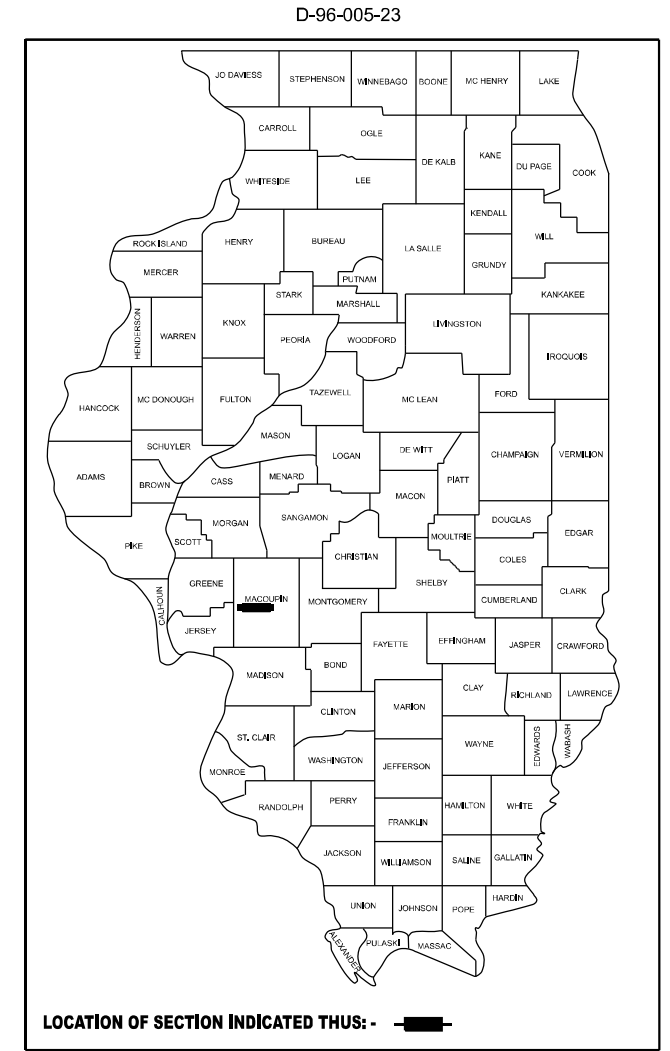
INDEX OF SHEETS

- 1 COVER SHEET
- 2 GENERAL NOTES
- 3 SUMMARY OF QUANTITIES
- 4-9 TYPICAL SECTION
- 10-13 SCHEDULE OF QUANTITIES
- 14-30 PLAN SHEETS
- 31 DETAILS

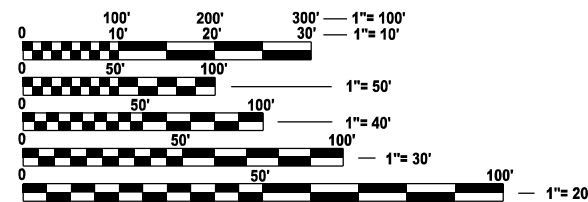
**PROPOSED
HIGHWAY PLANS**

**ROUTE: VARIOUS
SECTION: (107, 108, 109)Q
PROJECT: STP-LKJF(025)
CAPE SEAL AND FOG SEAL
MACOUPIN COUNTY**

C-96-043-23

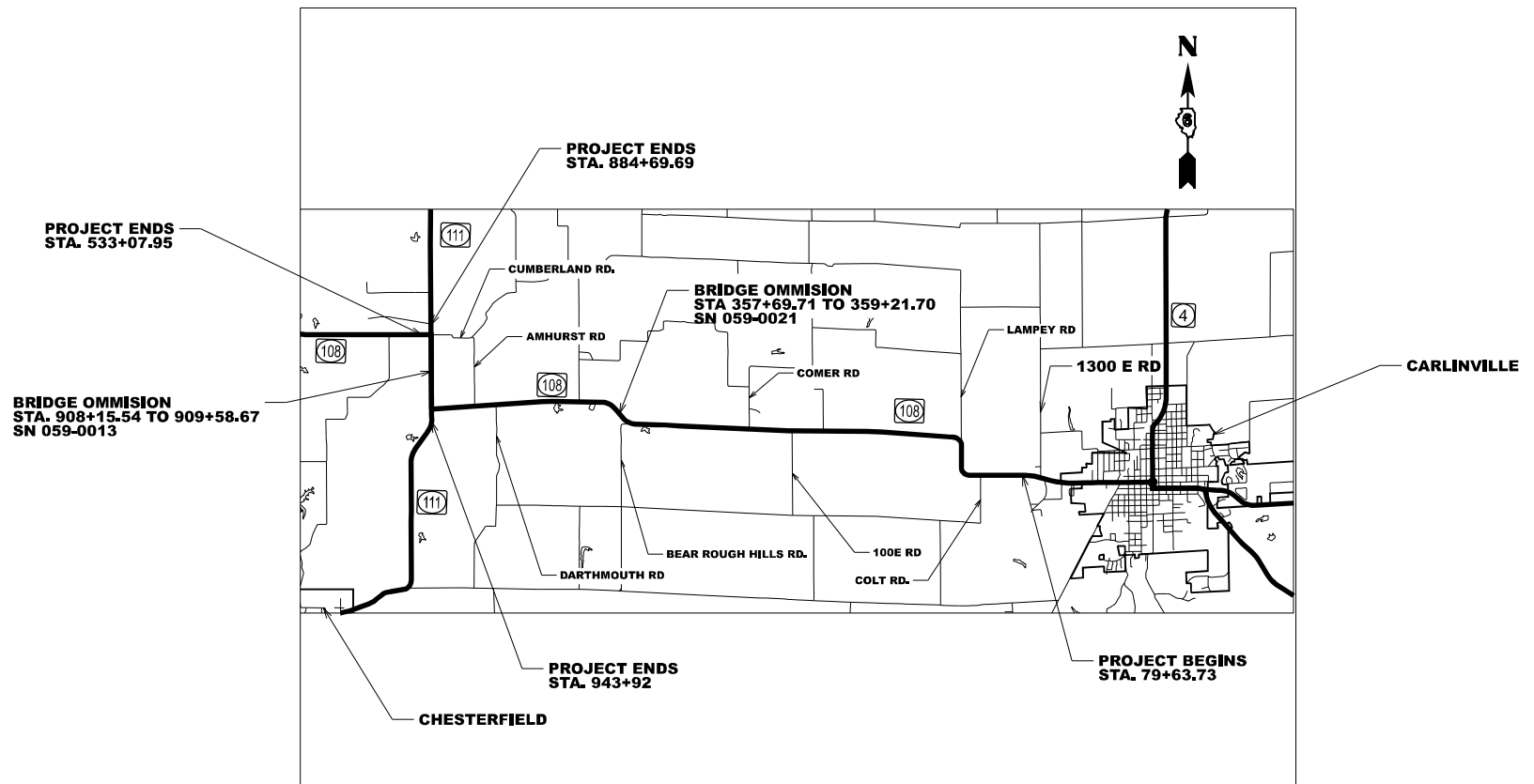


ADT: 1535 (2021)
MU: 4.88%
SU: 3.82%
PV: 89.05%
FC: MINOR ARTERIAL



FULL SIZE PLANS HAVE BEEN PREPARED USING STANDARD ENGINEERING SCALES. REDUCED SIZED PLANS WILL NOT CONFORM TO STANDARD SCALES. IN MAKING MEASUREMENTS ON REDUCED PLANS, THE ABOVE SCALES MAY BE USED.

J.U.L.I.E.
JOINT UTILITY LOCATION INFORMATION FOR EXCAVATION
1-800-892-0123
OR 811



PROJECT ENGINEER: JON KELLEY - (217) 785-2739 - JONATHAN.KELLEY@ILLINOIS.GOV
PROJECT MANAGER: CLOYD JACK - (217) 524-0064 - CLOYD.JACK@ILLINOIS.GOV
PROJECT DESIGNER: CARL JOHNSON - (217) 782-3332 - CARL.JOHNSON@ILLINIOS.GOV

GROSS LENGTH = 46041.6 FT. = 8.72 MILE
NET LENGTH = 45823.14 FT. = 8.679 MILE

CONTRACT NO. 72265

STATE OF ILLINOIS
DEPARTMENT OF TRANSPORTATION

SUBMITTED February 2, 2024

John P. Meyer
REGIONAL ENGINEER

March 22, 2024
Scott A. Etk
ENGINEER OF DESIGN AND ENVIRONMENT

March 22, 2024
Stephen M. Spauld
DIRECTOR OF HIGHWAYS PROJECT IMPLEMENTATION

**PRINTED BY THE AUTHORITY
OF THE STATE OF ILLINOIS**

GENERAL NOTES:

1. THE CONTRACTOR SHALL NOTIFY THE DISTRICT 6 BUREAU OF OPERATIONS AT (217) 785-5306 THREE WEEKS PRIOR TO IMPLEMENTING ANY TRAFFIC CONTROL.
2. THE DISTRICT 6 BUREAU OF OPERATIONS SHALL BE NOTIFIED BY PHONE AT (217) 785-5306 AT LEAST 14 DAYS PRIOR TO PLACEMENT OF FINAL PAVEMENT MARKINGS.
3. AGGREGATE FOR A-1 BITUMINOUS SURFACE TREATMENT MAY BE CA-15, CA-16, OR CA-20.
4. NO PASSING ZONES TO BE FIELD VERIFIED BY THE RESIDENT ENGINEER, WHO SHALL NOTIFY THE BUREAU OF OPERATIONS WITH ANY CONCERNS, ALONG WITH NOTIFICATION 14 DAYS PRIOR TO PLACEMENT OF FINAL PAVEMENT MARKING. (PH: 217-785-5306)



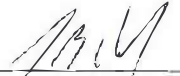
COMMITMENTS
NONE

HIGHWAY STANDARDS

000001-08
001006
701001-02
701006-05
701011-04
701201-05
701306-04
701311-03
701901-09
780001-05
781001-04

RATES OF APPLICATION

BITUMINOUS MATERIALS (FOG SEAL) : 0.08 POUNDS/ SQ FT. (SHOULDER)
BITUMINOUS MATERIALS (FOG SEAL) : 0.05 POUNDS/ SQ FT. (MAINLINE)

STATE OF ILLINOIS DEPARTMENT OF TRANSPORTATION DIVISION OF HIGHWAYS DISTRICT 6	
EXAMINED	January, 24 20 24
 ENGINEER OF OPERATIONS	
EXAMINED	January, 19 20 24
 ENGINEER OF PROJECT IMPLEMENTATION	
EXAMINED	January, 24 20 24
 ENGINEER OF PROGRAM DEVELOPMENT	

REV. - MS

MODEL: I:\united\Sheet1
FILE NAME: c:\p\work\pav\carl.johnson\illinois.pvd\07503\General Sheet.dgn

USER NAME = Carl.Johnson	DESIGNED -	REVISED -
	DRAWN -	REVISED -
PLOT SCALE = 0.16666633 / in.	CHECKED -	REVISED -
PLOT DATE = 2/1/2024	DATE -	REVISED -

**STATE OF ILLINOIS
DEPARTMENT OF TRANSPORTATION**

GENERAL NOTES

SCALE: SHEET 1 OF 1 SHEETS STA. TO STA.

F.A.P. RTE.	SECTION	COUNTY	TOTAL SHEETS	SHEET NO.
*	(107, 108, 109)Q	MACOUPIN	31	2
CONTRACT NO. 72265				
ILLINOIS FED. AID PROJECT				

*608, 761, 765 (IL 108, 111)

MODEL: SQC-1 [Sheet]
 FILE NAME: c:\pwr_work\pwr\lucard.johnson@illinois.gov\107503\SQC.dgn

				6-01491-0000	
				STP	
				80% FEDERAL 20% STATE	
				ROADWAY	
CODE NO.	ITEM	UNIT	TOTAL QUANTITY	0005	RURAL
40500001	FIBER -MODIFIED ASPHALT CRACK SEALING	FOOT	44924	44924	
40500061	CAPE SEAL	SQ YD	124900	124900	
67000400	ENGINEER'S FIELD OFFICE, TYPE A	CAL MO	6	6	
67100100	MOBILIZATION	L SUM	1	1	
70100450	TRAFFIC CONTROL AND PROTECTION, STANDARD 701201	L SUM	1	1	
70100460	TRAFFIC CONTROL AND PROTECTION, STANDARD 701306	L SUM	1	1	
70300100	SHORT TERM PAVEMENT MARKING	FOOT	13689	13689	
70300150	SHORT TERM PAVEMENT MARKING REMOVAL	SQ FT	4563	4563	
* 78009005	MODIFIED URETHANE PAVEMENT MARKING - LINE 5"	FOOT	138668	138668	
* 78009024	MODIFIED URETHANE PAVEMENT MARKING - LINE 24"	FOOT	52	52	
* 78100100	RAISED REFLECTIVE PAVEMENT MARKER	EACH	574	574	
78300200	RAISED REFLECTIVE PAVEMENT MARKER REMOVAL	EACH	574	574	
X0326898	CENTER LINE - RUMBLE STRIP - 16"	FOOT	3080	3080	
Ø Z0076600	TRAINEES	HOUR	500	500	
X4060107	BITUMINOUS MATERIALS (FOG SEAL)	POUND	92728	92728	
Ø Z0076604	TRAINEES TRAINING PROGRAM GRADUATE	HOUR	500	500	

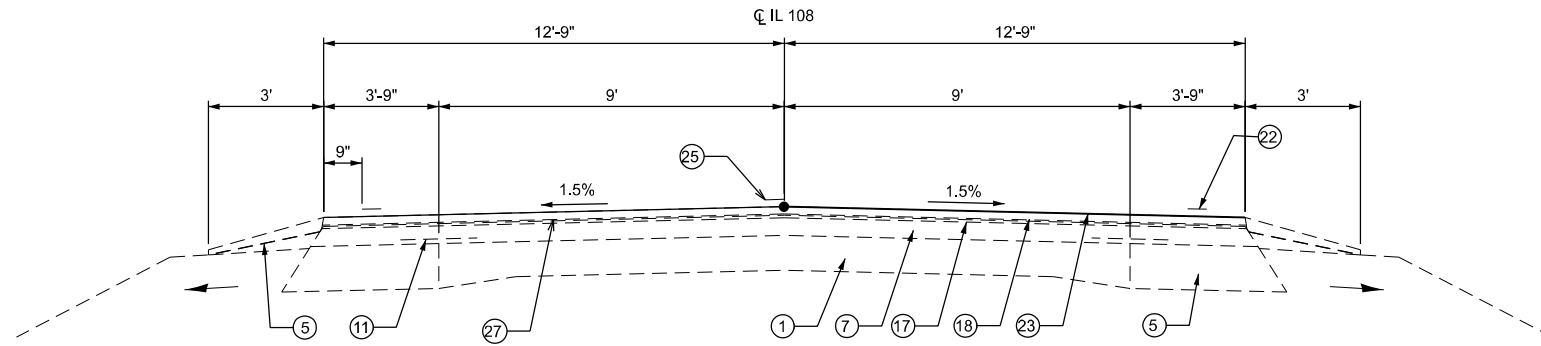
* SPECIALTY ITEM

Ø 0042

				6-01491-0000	
				STP	
				80% FEDERAL 20% STATE	
				ROADWAY	
CODE NO.	ITEM	UNIT	TOTAL QUANTITY	0005	RURAL
X4400196	HOT-MIX ASPHALT SURFACE REMOVAL (SPECIAL)	SQ YD	124900	124900	

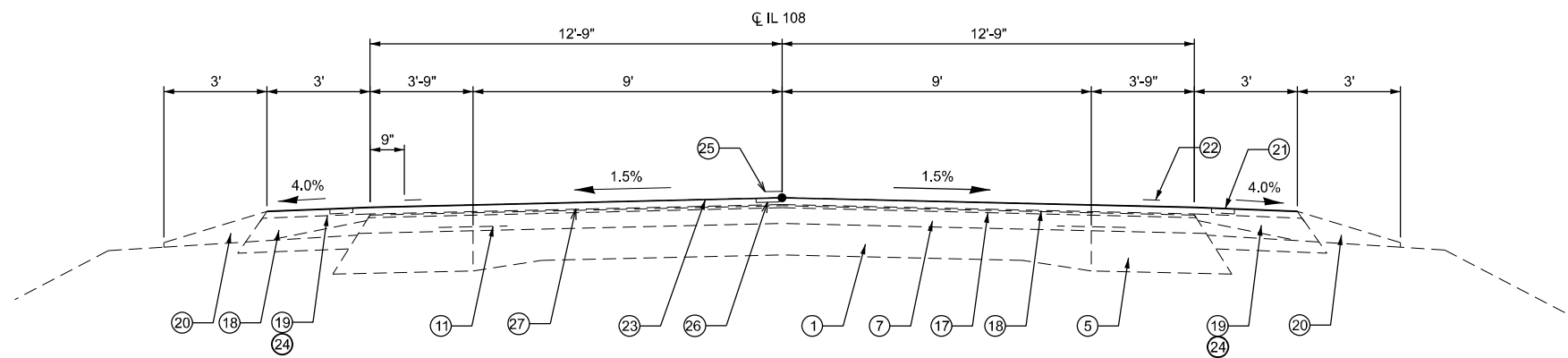
REV. - MS

USER NAME = Carl Johnson	DESIGNED -	REVISED -	STATE OF ILLINOIS DEPARTMENT OF TRANSPORTATION	SUMMARY OF QUANTITIES				F.A.P. RTE.	SECTION	COUNTY	TOTAL SHEETS	SHEET NO.	
PLOT SCALE = 0.16666633 / in.	DRAWN -	REVISED -		SCALE:	SHEET 1	OF 1	SHEETS	STA.	TO STA.	(107, 108, 109)Q	MACOUPIN	31	3
PLOT DATE = 1/26/2024	CHECKED -	REVISED -		CONTRACT NO. 72265									
	DATE -	REVISED -		ILLINOIS FED. AID PROJECT									



TYPICAL SECTION #1

STA. 80+00.00 TO P.T. STA. 111+80.00
 STA. 146+90.00 TO P.T. STA. 201+38.72
 STATION EQUATION STA. 201+38.72 BK. = STA. 201+39.18 AH.
 STA. 201+39.18 TO P.T. STA. 249+99.94
 STATION EQUATION STA. 249+99.94 BK. = STA. 250+00.06 AH.
 STA. 250+00.06 TO P.T. STA. 332+89.53
 STATION EQUATION STA. 332+89.53 BK. = STA. 332+89.64 AH.
 STA. 332+89.64 TO STA. 350+00.00
 LT STA. 375+35.00 TO P.T. LT STA. 413+68.06
 RT STA. 375+32.50 TO P.T. RT STA. 413+68.06
 STATION EQUATION STA. 413+68.06 BK. = STA. 413+68.64 AH.
 STA. 413+68.64 TO STA. 472+50.00



TYPICAL SECTION #2

STA. 111+80.00 TO P.T. STA. 120+64.83
 STATION EQUATION STA. 120+64.83 BK. = STA. 122+78.03 AH.
 STA. 122+78.03 TO P.T. STA. 144+08.28
 STATION EQUATION STA. 144+08.28 BK. = STA. 145+88.98 AH.
 STA. 145+88.98 TO STA. 146+90.00

- ① EXIST. 9-7-9 PCC PAVEMENT
- ② EXIST. 9-7 1/2-9 PCC PAVEMENT
- ③ EXIST. 9-6-9 PCC PAVEMENT
- ④ EXIST. HMA BASE COURSE WIDENING 6'
- ⑤ EXIST. HMA BASE COURSE WIDENING 9'
- ⑥ EXIST. HMA BASE COURSE WIDENING 10"
- ⑦ EXIST. HMA OVERLAY
- ⑧ EXIST. HMA PAVEMENT (FULL-DEPTH)
- ⑨ EXIST. LEVELING BINDER (MACHINE METHOD)
- ⑩ EXIST. SUB-BASE GRANULAR MATERIAL, TYPE A (12')
- ⑪ EXIST. STRIP REFLECTIVE CRACK CONTROL
- ⑫ EXIST. HMA SHOULDER 8"
- ⑬ EXIST. HMA SHOULDER 6"
- ⑭ EXIST. CONCRETE GUTTER, TYPE A
- ⑮ EXIST. PCC GUTTER
- ⑯ EXIST. COMBINATION CONCRETE CURB & GUTTER, TYPE B SPECIAL
- ⑰ EXIST. LEVELING BINDER (MACHINE METHOD) N50 (3/4")
- ⑱ EXIST. HMA SURFACE COURSE, MIX 'C' N50 (1 1/2')
- ⑲ EXIST. HMA SHOULDERS 6 1/2'
- ⑳ EXIST. AGGREGATE SHOULDER, TYPE B
- ㉑ EXIST. RUMBLE STRIP
- ㉒ EXIST. PAINT PAVEMENT MARKING 5"
- ㉓ PROP. CAPE SEAL
- ㉔ PROP. FOG SEAL
- ㉕ PROP. MODIFIED URETHANE PAVEMENT MARKING 5"
- ㉖ PROP. CENTERLINE RUMBLE STRIP
- ㉗ PROP. HOT-MIX ASPHALT SURFACE REMOVAL, SPECIAL - 1/2"

MODEL: Typical=1 (Sheet)
 FILE NAME: c:\p\work\107108\109\72265-typicals.dgn

USER NAME = Carl.Johnson	DESIGNED -	REVISED -
	DRAWN -	REVISED -
PLOT SCALE = 0.16666833' / in.	CHECKED -	REVISED -
PLOT DATE = 1/26/2024	DATE -	REVISED -

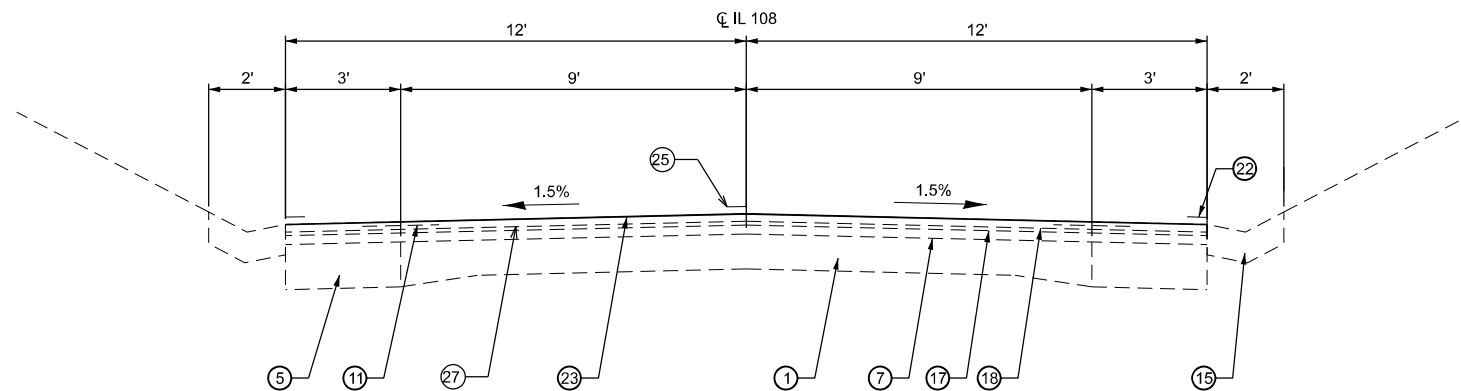
STATE OF ILLINOIS
DEPARTMENT OF TRANSPORTATION

TYPICAL SECTIONS

SCALE: SHEET 1 OF 6 SHEETS STA. TO STA.

F.A.P. RTE.	SECTION	COUNTY	TOTAL SHEETS	SHEET NO.
*	(107, 108, 109)Q	MACOUPIN	31	4
CONTRACT NO. 72265				
ILLINOIS FED. AID PROJECT				

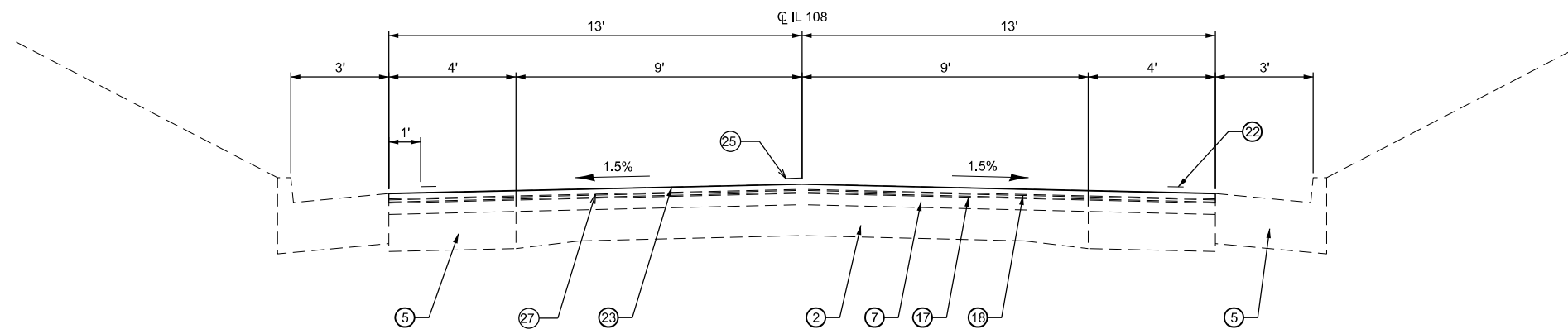
*608, 761, 765 (IL 108, 111)



TYPICAL SECTION #3

RT. STA. 350+00.00 TO RT. P.T. STA. 354+94.31
 STATION EQUATION STA. 354+94.31BK. = STA. 355+54.89 AH.
 LT. STA. 366+84.00 TO LT. P.T. STA. 372+88.00
 RT. STA. 367+95.00 TO RT. P.T. STA. 372+88.00
 STATION EQUATION STA. 372+88.00 BK. = STA. 373+50.40 AH.
 LT STA. 373+50.40 TO LT STA. 375+35.00
 RT STA. 373+50.40 TO RT STA. 375+32.50

- ① EXIST. 9-7-9 PCC PAVEMENT
- ② EXIST. 9-7 1/2-9 PCC PAVEMENT
- ③ EXIST. 9-6-9 PCC PAVEMENT
- ④ EXIST. HMA BASE COURSE WIDENING 6'
- ⑤ EXIST. HMA BASE COURSE WIDENING 9'
- ⑥ EXIST. HMA BASE COURSE WIDENING 10"
- ⑦ EXIST. HMA OVERLAY
- ⑧ EXIST. HMA PAVEMENT (FULL-DEPTH)
- ⑨ EXIST. LEVELING BINDER (MACHINE METHOD)
- ⑩ EXIST. SUB-BASE GRANULAR MATERIAL, TYPE A (12')
- ⑪ EXIST. STRIP REFLECTIVE CRACK CONTROL
- ⑫ EXIST. HMA SHOULDER 8"
- ⑬ EXIST. HMA SHOULDER 6"
- ⑭ EXIST. CONCRETE GUTTER, TYPE A
- ⑮ EXIST. PCC GUTTER
- ⑯ EXIST. COMBINATION CONCRETE CURB & GUTTER, TYPE B SPECIAL
- ⑰ EXIST. LEVELING BINDER (MACHINE METHOD) N50 (3/4")
- ⑱ EXIST. HMA SURFACE COURSE, MIX 'C' N50 (1 1/2')
- ⑲ EXIST. HMA SHOULDERS 6 1/2'
- ⑳ EXIST. AGGREGATE SHOULDER, TYPE B
- ㉑ EXIST. RUMBLE STRIP
- ㉒ EXIST. PAINT PAVEMENT MARKING 5"
- ㉓ PROP. CAPE SEAL
- ㉔ PROP. FOG SEAL
- ㉕ PROP. MODIFIED URETHANE PAVEMENT MARKING 5"
- ㉖ PROP. CENTERLINE RUMBLE STRIP
- ㉗ PROP. HOT-MIX ASPHALT SURFACE REMOVAL, SPECIAL - 1/2"



TYPICAL SECTION #4

STATION EQUATION STA. 354+94.31BK. = STA. 355+54.89 AH.
 STA. 355+54.89 TO STA. 357+70.83
 BRIDGE OMISSION STA. 357+70.83 TO STA. 359+20.17

MODEL: Typical=2 (Sheet)
 FILE NAME: c:\p\work\w101\card.johnson@illinois.gov\0750317265-Typical.dgn

USER NAME = Carl.Johnson	DESIGNED -	REVISED -
	DRAWN -	REVISED -
PLOT SCALE = 0.16666833' / in.	CHECKED -	REVISED -
PLOT DATE = 1/26/2024	DATE -	REVISED -

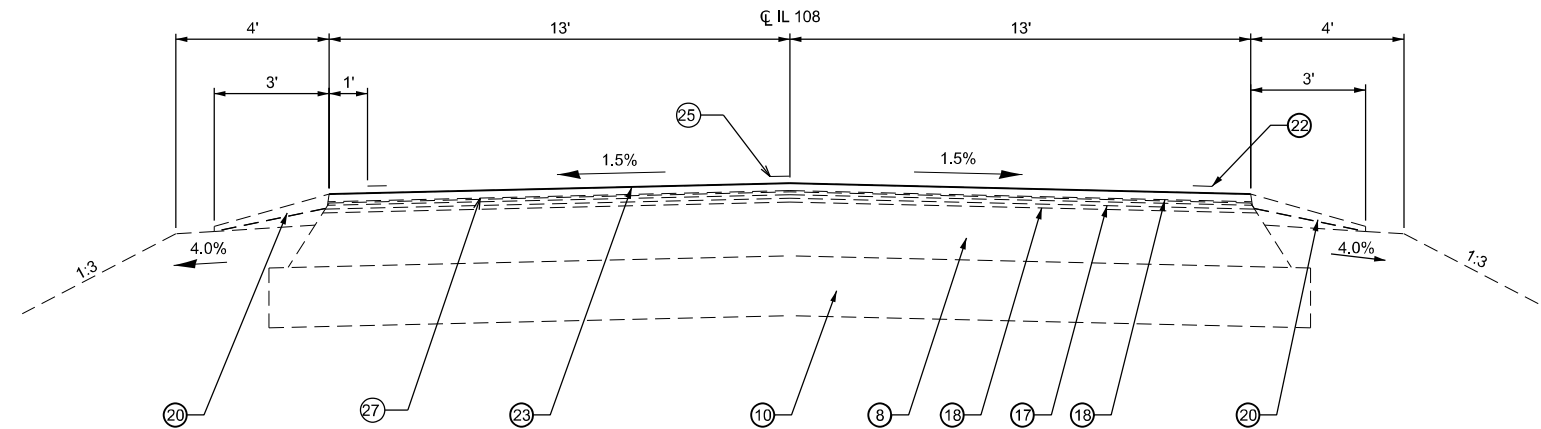
**STATE OF ILLINOIS
 DEPARTMENT OF TRANSPORTATION**

TYPICAL SECTIONS

SCALE: SHEET 2 OF 6 SHEETS STA. TO STA.

F.A.P. RTE.	SECTION	COUNTY	TOTAL SHEETS	SHEET NO.
*	(107, 108, 109)Q	MACOUPIN	31	5
CONTRACT NO. 72265				
ILLINOIS FED. AID PROJECT				

*608, 761, 765 (IL 108, 111)

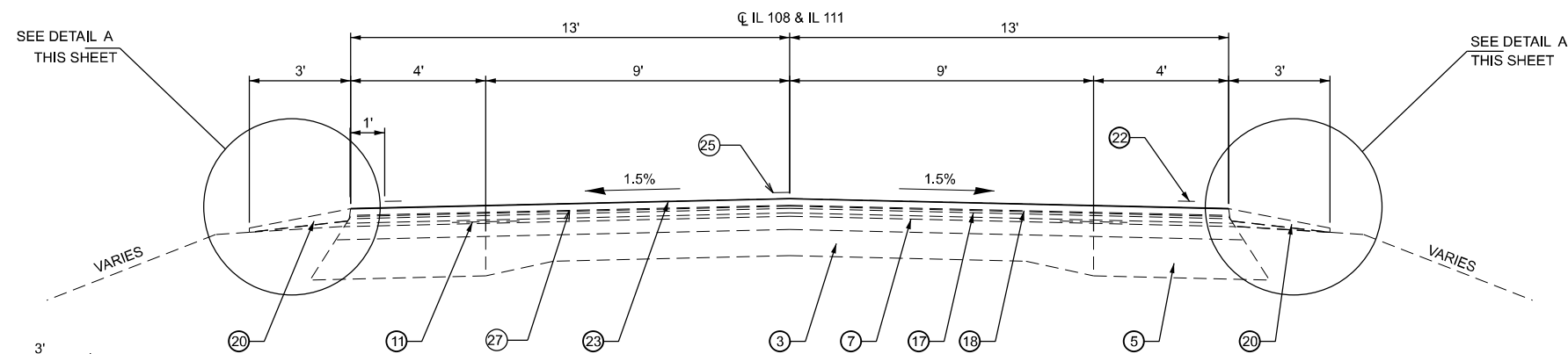


TYPICAL SECTION #7

STA. 473+10.00 TO STA. 479+78.80 IL 108 (SOUTH)
 STA. 526+61.81 TO STA. 532+00.00 IL 108 (NORTH)

- ① EXIST. 9-7-9 PCC PAVEMENT
- ② EXIST. 9-7 1/2-9 PCC PAVEMENT
- ③ EXIST. 9-6-9 PCC PAVEMENT
- ④ EXIST. HMA BASE COURSE WIDENING 6"
- ⑤ EXIST. HMA BASE COURSE WIDENING 9"
- ⑥ EXIST. HMA BASE COURSE WIDENING 10"
- ⑦ EXIST. HMA OVERLAY
- ⑧ EXIST. HMA PAVEMENT (FULL-DEPTH)
- ⑨ EXIST. LEVELING BINDER (MACHINE METHOD)
- ⑩ EXIST. SUB-BASE GRANULAR MATERIAL, TYPE A (12")
- ⑪ EXIST. STRIP REFLECTIVE CRACK CONTROL
- ⑫ EXIST. HMA SHOULDER 8"
- ⑬ EXIST. HMA SHOULDER 6"
- ⑭ EXIST. CONCRETE GUTTER, TYPE A
- ⑮ EXIST. PCC GUTTER
- ⑯ EXIST. COMBINATION CONCRETE CURB & GUTTER, TYPE B SPECIAL
- ⑰ EXIST. LEVELING BINDER (MACHINE METHOD) N50 (3/4")
- ⑱ EXIST. HMA SURFACE COURSE, MIX 'C' N50 (1 1/2")
- ⑲ EXIST. HMA SHOULDERS 6 1/2"
- ⑳ EXIST. AGGREGATE SHOULDER, TYPE B
- ㉑ EXIST. RUMBLE STRIP
- ㉒ EXIST. PAINT PAVEMENT MARKING 5"
- ㉓ PROP. CAPE SEAL
- ㉔ PROP. FOG SEAL
- ㉕ PROP. MODIFIED URETHANE PAVEMENT MARKING 5"
- ㉖ PROP. CENTERLINE RUMBLE STRIP
- ㉗ PROP. HOT-MIX ASPHALT SURFACE REMOVAL, SPECIAL - 1/2"

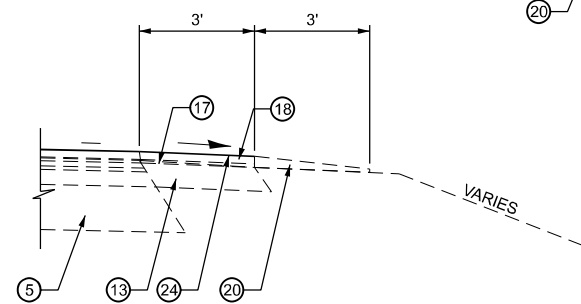
SEE DETAIL A
THIS SHEET



SEE DETAIL A
THIS SHEET

TYPICAL SECTION #8

STA. 885+32.00 TO STA. 886+07.00
 STA. 887+85.00 TO STA. 894+72.20
 LT. STA. 896+17.00 TO LT. STA. 902+60.50
 RT. STA. 896+17.00 TO RT. STA. 901+92.00
 LT. STA. 907+00.00 TO LT. STA. 908+43.90
 RT. STA. 907+02.00 TO RT. STA. 908+43.90
 BRIDGE OMISSION STA. 908+43.90 TO STA. 909+30.09
 LT. STA. 909+30.09 TO LT. STA. 913+90.00
 RT. STA. 909+30.09 TO RT. STA. 913+74.00
 LT. STA. 922+57.00 TO LT. STA. 933+00.00
 RT. STA. 921+92.00 TO RT. STA. 933+00.00
 STA. 472+50.00 TO STA. 473+10.00 (IL 108) (SOUTH)
 STA. 532+00.00 TO STA. 532+30.00 (IL 108) (NORTH)



DETAIL A

LT STA. 907+00.00 TO LT STA. 908+43.90
 RT STA. 907+02.00 TO RT STA. 908+43.90
 BRIDGE OMISSION STA. 908+43.90 TO STA. 909+30.09
 LT STA 909+30.90 TO LT STA 913+90.00
 RT STA 909+30.90 TO RT STA 913+74.00

MODEL: Typical=4 [Sheet]
FILE NAME: c:\p\work\project\card.johnson\0750317265-typical8.dgn

USER NAME = Carl.Johnson	DESIGNED -	REVISED -
DRAWN -	REVISOR -	REVISION -
PLOT SCALE = 0.16666833' / in.	CHECKED -	REVISOR -
PLOT DATE = 1/26/2024	DATE -	REVISION -

STATE OF ILLINOIS
DEPARTMENT OF TRANSPORTATION

TYPICAL SECTIONS

SCALE: SHEET 4 OF 6 SHEETS STA. TO STA.

F.A.P. RTE.	SECTION	COUNTY	TOTAL SHEETS	SHEET NO.
*	(107, 108, 109)Q	MACOUPIN	31	7
CONTRACT NO. 72265				
ILLINOIS FED. AID PROJECT				

*608, 761, 765 (IL 108, 111)

CAPE SEAL										
LOCATION			WIDTH (FOOT)	LENGTH (FOOT)	DESCRIPTION	40500061 CAPE SEAL (SQ YD)	X4400196 HOT-MIX ASPHALT SURFACE REMOVAL, SPECIAL (SQ YD)	40500001 FIBER- MODIFIED ASHPALT CRACK SEALING (FOOT)	78100100 RAISED REFLECTIVE PAVEMENT MARKER AMBER (EACH)	78300200 RAISED REFLECTIVE PAVEMENT MARKER REMOVAL (EACH)
IL 108 SOUTH SECTION										
STA 79+63.73	TO	STA 120+60.34	25.5	4096.61	MAINLINE	11607.1	11607.1	4096.6	52	52
STATION EQUATION STA. 120+60.34 = STA. 123+00.48										
STA 123+00.48	TO	STA 144+18.44	25.5	2117.96	MAINLINE	6000.9	6000.9	2118.0	27	27
STATION EQUATION STA. 144+18.44 = STA. 145+99.04										
STA 145+99.04	TO	STA 201+38.72	25.5	5539.68	MAINLINE	15695.8	15695.8	5539.7	70	70
STA 201+39.18	TO	STA 249+99.94	25.5	4860.76	MAINLINE	13772.2	13772.2	4860.8	61	61
STA 250+00.06	TO	STA 332+89.53	25.5	8289.47	MAINLINE	23486.8	23486.8	8289.5	104	104
STA 332+89.64	TO	STA 350+00	25.5	1710.36	MAINLINE	4846.0	4846.0	1710.4	22	22
STA 350+00	TO	STA 354+84.3	24	484.3	MAINLINE	1291.5	1291.5	484.3	7	7
STATION EQUATION STA. 354+84.3 = STA. 355+59.63										
STA 355+59.63	TO	STA 357+69.71	26	210.08	MAINLINE	606.9	606.9	210.1	3	3
BRIDGE OMMISION STA. 357+69.71 TO STA. 359+21.71										
RT STA 359+21.71	TO	RT STA 362+52.22	13	330.52	MAINLINE	477.4	477.4	330.5	5	5
LT STA 359+21.71	TO	LT STA 362+47.76	13	326.12	MAINLINE	471.1	471.1			
RT STA 362+52.22	TO	RT STA 372+83.37	12	1031.15	MAINLINE	1374.9	1374.9	1031.2	13	13
LT STA 362+47.76	TO	LT STA 372+83.37	12	1035.61	MAINLINE	1380.8	1380.8			
STATION EQUATION STA. 372+83.37 = STA. 373+47.71										
RT STA 373+47.71	TO	RT STA 375+32.5	12	184.79	MAINLINE	246.4	246.4	184.8	3	3
LT STA 373+47.71	TO	LT STA 375+35	12	187.29	MAINLINE	249.7	249.7			
RT STA 375+32.5	TO	RT STA 472+50	12.75	9717.5	MAINLINE	13766.5	13766.5	9717.5	122	122
LT STA 375+35	TO	LT STA 472+50	12.75	9715	MAINLINE	13762.9	13762.9			
RT STA 472+50	TO	RT STA 479+17.78	13	667.78	MAINLINE	964.6	964.6	667.8	9	9
LT STA 472+50	TO	LT STA 478+92.88	13	642.88	MAINLINE	928.6	928.6			
RT STA 479+17.78	TO	RT STA 479+86	VARIES	68.22	MAINLINE	305.7	305.7	68.2	1	1
LT STA 478+92.88	TO	LT STA 479+86	VARIES	93.12	MAINLINE	330.0	330.0			
IL 108 NORTH SECTION										
RT STA 527+44.25	TO	RT STA 526+58.77	VARIES	101.5	MAINLINE	349.7	349.7	101.5	2	2
LT STA 527+70.92	TO	LT STA 526+44.25	VARIES	74.83	MAINLINE	334.5	334.5			
RT STA 527+58.77	TO	RT STA 532+91.99	13	533.21	MAINLINE	770.2	770.2	533.2	7	7
LT STA 527+44.25	TO	LT STA 532+91.99	13	547.74	MAINLINE	791.2	791.2			
IL 111										
LT STA 884+69.69	TO	LT STA 890+90.14	13	620.45	MAINLINE	896.2	896.2	620.4	8	8
RT STA 884+69.69	TO	RT STA 890+43.61	13	573.92	MAINLINE	829.0	829.0			
LT STA 891+78.64	TO	LT STA 908+15.54	13	1636.90	MAINLINE	2364.4	2364.4	1636.9	21	21
RT STA 892+64.78	TO	RT STA 908+15.54	13	1550.76	MAINLINE	2240.0	2240.0			
BRIDGE OMMISION STA. 908+15.54 TO STA. 909+58.67										
LT STA 909+58.67	TO	LT STA 936+64.81	13	2706.14	MAINLINE	3908.9	3908.9	2706.1	34	34
RT STA 909+58.67	TO	RT STA 942+91.74	13	333.07	MAINLINE	481.1	481.1			
STATION EQUATION STA. 942+91.74 = STA. 943+00.35										
STA 943+00.35	TO	STA 943+92.002	26	91.65	MAINLINE	264.8	264.8		2	2
CUMBERLAND RD										
STA 10+13	TO	STA 10+29.37	VARIES	16.37	SIDROAD	104.3	104.3	16.4	1	1
Total						124900	124900	44924	574	574

MODEL: Untitled (Sheet)
 FILE NAME: c:\p\work\wtd\carl.johnson@illinois.gov\0907503\Schedule of Quantities.dgn

USER NAME = Carl.Johnson	DESIGNED -	REVISED -
	DRAWN -	REVISED -
PLOT SCALE = \$SCALE\$	CHECKED -	REVISED -
PLOT DATE = 1/26/2024	DATE -	REVISED -

**STATE OF ILLINOIS
DEPARTMENT OF TRANSPORTATION**

SCHEDULE OF QUANTITIES

SCALE: SHEET 1 OF 4 SHEETS STA. TO STA.

F.A.P RTE.	SECTION	COUNTY	TOTAL SHEETS	SHEET NO.
*	(107, 108, 109)Q	MACOUPIN	31	10
CONTRACT NO. 72265				
ILLINOIS FED. AID PROJECT				

PAVEMENT MARKING - 5-INCH						
STATIONING		DESCRIPTION		78009005		
				MODIFIED URETHANE PAVT MKG LINE - 5" WHITE	MODIFIED URETHANE PAVT MKG LINE - 5" YELLOW	MODIFIED URETHANE PAVT MKG LINE - 5" YELLOW
				EDGE LINE (FOOT)	SOLID (FOOT)	SKIP DASH (FOOT)
IL 108 SOUTH SECTION						
RT STA 79+63.73	TO	RT STA 120+60.34	EDGE LINE	4096.8		
LT STA 79+63.73	TO	LT STA 120+60.34	EDGE LINE	4096.8		
STA 79+63.73	TO	STA 81+53.78	DOUBLE CENTERLINE		380.1	
RT STA 81+53.78	TO	RT STA 90+58	RIGHT SKIP DASH			230.0
LT STA 81+53.78	TO	LT STA 90+58	LEFT NO PASSING		904.2	
STA 90+58	TO	STA 92+00	DOUBLE CENTERLINE		284.0	
RT STA 92+00	TO	RT STA 100+36.02	RIGHT NO PASSING		836.0	
LT STA 92+00	TO	LT STA 100+36.02	LEFT NO PASSING			210.0
STA 100+36.02	TO	STA 120+60.34	DOUBLE CENTERLINE		4048.6	
STATION EQUATION STA. 120+60.34 = STA. 123+00.48						
RT STA 123+00.48	TO	RT STA 144+18.44	EDGE LINE	2118.0		
LT STA 123+00.48	TO	LT STA 144+18.44	EDGE LINE	2118.0		
STA 123+00.48	TO	STA 143+59	DOUBLE CENTERLINE		4117.0	
RT STA 143+59	TO	RT STA 144+18.44	RIGHT SKIP DASH			15.0
LT STA 143+59	TO	LT STA 144+18.44	LEFT NO PASSING		59.4	
STATION EQUATION STA. 144+18.44 = STA. 145+99.04						
RT STA 145+99.04	TO	RT STA 354+84.3	EDGE LINE	20885.3		
LT STA 145+99.04	TO	LT STA 354+84.3	EDGE LINE	20885.3		
RT STA 145+99.04	TO	RT STA 155+11.5	RIGHT SKIP DASH			230.0
LT STA 145+99.04	TO	LT STA 155+11.5	LEFT NO PASSING		912.5	
STA 155+11.5	TO	STA 262+37	CENTER SKIP DASH			2685.0
RT STA 262+37	TO	RT STA 268+54	RIGHT NO PASSING		617.0	
LT STA 262+37	TO	LT STA 268+54	LEFT SKIP DASH			155.0
STA 268+54	TO	STA 270+00	CENTER SKIP DASH			40.0
RT STA 270+00	TO	RT STA 275+76	RIGHT SKIP DASH			145.0
LT STA 270+00	TO	LT STA 275+76	LEFT NO PASSING		576.0	
STA 275+76	TO	STA 325+12	CENTER SKIP DASH			1235.0
RT STA 325+12	TO	RT STA 332+68	RIGHT NO PASSING		756.0	
LT STA 325+12	TO	LT STA 332+68	LEFT SKIP DASH			190.0
STA 332+68	TO	STA 354+84.3	DOUBLE CENTERLINE		4432.6	
STATION EQUATION STA. 354+84.3 = STA. 355+59.63						
RT STA 355+59.63	TO	RT STA 357+69.71	EDGE LINE	210.2		
LT STA 355+59.63	TO	LT STA 357+69.71	EDGE LINE	210.2		
STA 355+59.63	TO	STA 357+69.71	DOUBLE CENTERLINE		420.2	
RT STA 357+69.71	TO	RT STA 359+21.71	BRIDGE EDGELINE	151.8		
LT STA 357+69.71	TO	LT STA 359+21.71	BRIDGE EDGELINE	151.8		
STA 357+69.71	TO	STA 359+21.71	DOUBLE CENTERLINE		303.5	
RT STA 359+21.71	TO	RT STA 372+83.37	EDGE LINE	1361.7		
LT STA 359+21.71	TO	LT STA 372+83.37	EDGE LINE	1361.7		
STA 359+21.71	TO	STA 372+83.37	DOUBLE CENTERLINE		2722.0	
STATION EQUATION STA. 372+83.37 = STA. 373+47.71						
				Subtotal	57647.3	5135.0

PAVEMENT MARKING - 5-INCH						
STATIONING		DESCRIPTION		78009005		
				MODIFIED URETHANE PAVT MKG LINE - 5" WHITE	MODIFIED URETHANE PAVT MKG LINE - 5" YELLOW	MODIFIED URETHANE PAVT MKG LINE - 5" YELLOW
				EDGE LINE (FOOT)	SOLID (FOOT)	SKIP DASH (FOOT)
IL 108 SOUTH SECTION (CONTINUED)						
STATION EQUATION STA. 372+83.37 = STA. 373+47.71						
RT STA 373+47.71	TO	RT STA 479+86	EDGE LINE	10638.3		
LT STA 373+47.71	TO	LT STA 479+86	EDGE LINE	10638.3		
STA 373+47.71	TO	STA 375+14	DOUBLE CENTERLINE		332.6	
RT STA 375+14	TO	RT STA 385+67	RIGHT SKIP DASH			263.3
LT STA 375+14	TO	LT STA 385+67	LEFT NO PASSING		1053.0	
STA 385+67	TO	STA 430+02	CENTER SKIP DASH			1108.8
RT STA 430+02	TO	RT STA 439+16	RIGHT NO PASSING		914.0	
LT STA 430+02	TO	LT STA 439+16	LEFT SKIP DASH			228.5
STA 439+16	TO	STA 440+47	DOUBLE CENTERLINE		262.0	
RT STA 440+47	TO	RT STA 447+53	RIGHT SKIP DASH			176.5
LT STA 440+47	TO	LT STA 447+53	LEFT NO PASSING		706.0	
STA 447+53	TO	STA 464+14	CENTER SKIP DASH			415.3
RT STA 464+14	TO	RT STA 471+32	RIGHT NO PASSING		718.0	
LT STA 464+14	TO	LT STA 471+32	LEFT SKIP DASH			179.5
STA 471+32	TO	STA 479+58	DOUBLE CENTERLINE		1652.0	
IL 108 NORTH SECTION						
RT STA 527+44.25	TO	RT STA 532+91.99	EDGE LINE	681.0		
LT STA 527+44.25	TO	LT STA 532+91.99	EDGE LINE	725.1		
STA 527+00	TO	STA 533+7.95	DOUBLE CENTERLINE		1215.9	
IL 111						
RT STA 884+69.69	TO	RT STA 890+43.61	EDGE LINE	573.9		
LT STA 884+69.69	TO	LT STA 890+90.14	EDGE LINE	620.5		
STA 884+69.69	TO	STA 917+08	DOUBLE CENTERLINE		6476.6	
RT STA 892+64.78	TO	RT STA 908+15.54	EDGE LINE	1550.7		
LT STA 891+78.64	TO	LT STA 908+15.54	EDGE LINE	1637.0		
RT STA 908+15.54	TO	RT STA 909+58.67	BRIDGE EDGELINE	143.2		
LT STA 908+15.54	TO	LT STA 909+58.67	BRIDGE EDGELINE	143.2		
RT STA 909+58.67	TO	RT STA 942+91.74	EDGE LINE	3333.1		
LT STA 909+58.67	TO	LT STA 936+64.95	EDGE LINE	2706.0		
RT STA 917+08	TO	RT STA 924+17	RIGHT SKIP DASH			177.3
LT STA 917+08	TO	LT STA 924+17	LEFT NO PASS		709.0	
STA 924+17	TO	STA 942+91.74	DOUBLE CENTERLINE		3749.5	
LT STA 938+72.4	TO	LT STA 942+91.74	EDGE LINE	420.6		
STATION EQUATION STA. 942+91.74 = STA. 943+00.35						
RT STA 943+00.35	TO	RT STA 943+92.35	EDGE LINE	92.0		
LT STA 943+00.35	TO	LT STA 943+92.35	EDGE LINE	92.0		
STA 943+00.35	TO	STA 943+92.35	DOUBLE CENTERLINE		184.0	
				Subtotal	33995.1	2549.0
				TOTAL	91642.4	39341.8

MODEL: Unlited-1 [Sheet]
 FILE NAME: c:\p\work\pav\card.johnson@illinois.gov\d097503\Schedule of Quantities.dgn

USER NAME = Carl Johnson	DESIGNED -	REVISED -
	DRAWN -	REVISED -
PLOT SCALE = \$SCALES	CHECKED -	REVISED -
PLOT DATE = 1/26/2024	DATE -	REVISED -

**STATE OF ILLINOIS
DEPARTMENT OF TRANSPORTATION**

SCHEDULE OF QUANTITIES

SCALE: SHEET 2 OF 4 SHEETS STA. TO STA.

F.A.P. RTE.	SECTION	COUNTY	TOTAL SHEETS	SHEET NO.
*	(107, 108, 109)Q <td>MACOUPIN <td>31</td> <td>11</td> </td>	MACOUPIN <td>31</td> <td>11</td>	31	11
ILLINOIS FED. AID PROJECT			CONTRACT NO. 72265	

*608, 761, 765 (IL 108, 111)

SHORT-TERM PAVEMENT MARKING								
STATIONS	OFFSET	DESCRIPTION	LENGTH (FOOT)	APPLICATIONS	70300100	70300150		
					SHORT TERM PAVEMENT MARKING (FOOT)	SHORT TERM PAVEMENT MARKING REMOVAL (SQ FT)		
IL 108 SOUTH SECTION								
STA 79+63.73	TO	STA 120+60.34	4096.6	CL MAINLINE	3	1229.0	409.7	
STATION EQUATION STA. 120+60.34 = STA. 123+00.48								
STA 123+00.48	TO	STA 144+18.44	2118.0	CL MAINLINE	3	635.4	211.8	
STATION EQUATION STA. 144+18.44 = STA. 145+99.04								
STA 145+99.04	TO	STA 354+84.3	20885.3	CL MAINLINE	3	6265.6	2088.5	
STATION EQUATION STA. 354+84.3 = STA. 355+59.63								
STA 355+59.63	TO	STA 357+69.71	210.1	CL MAINLINE	3	63.0	21.0	
BRIDGE OMMISION STA 357+69.71 TO 359+21.71								
STA 359+21.71	TO	STA 372+83.37	1361.7	CL MAINLINE	3	408.5	136.2	
STATION EQUATION STA. 372+83.37 = STA. 373+47.71								
STA 373+47.71	TO	RT STA 479+86	10638.3	CL MAINLINE	3	3191.5	1063.8	
IL 108 NORTH SECTION								
STA 527+44.25	TO	STA 532+91.99	547.7	CL MAINLINE	3	164.3	54.8	
IL 111								
RT STA 884+69.69	TO	RT STA 908+15.54	2345.9	CL MAINLINE	3	703.8	234.6	
BRIDGE OMMISION STA 908+15.54 TO STA 909+58.67								
RT STA 909+58.67	TO	RT STA 942+91.74	3333.1	CL MAINLINE	3	999.9	333.3	
STATION EQUATION STA. 942+91.74 = STA. 943+00.35								
RT STA 943+00.35	TO	RT STA 943+92.35	92.0	CL MAINLINE	3	27.6	9.2	
					TOTAL	13689	4563	

PAVEMENT MARKINGS - 24-INCH		
LOCATION	STATION	78009024
		MODIFIED URETHANE PAVEMENT MARKING - LINE - 24" (FOOT)
SOUTH INTERSECTION OF IL 108 & IL 111	STA 479+58	26.3
NORTH INTERSECTION OF IL 108 & IL 111	STA 527+00	24.9
TOTAL		52

CENTERLINE RUMBLE STRIP					
STATIONING	OFFSET (FOOT)	DESCRIPTION	X0326898	CENTER LINE RUMBLE STRIP 16" (FOOT)	
IL 108 SOUTH SECTION					
STA 111+91.34	TO	STA 120+60.34	0	CENTERLINE RUMBLE 869.0	
STATION EQUATION STA. 120+60.34 = STA. 123+00.48					
STA 123+00.48	TO	STA 144+18.44	0	CENTERLINE RUMBLE 2118.0	
STATION EQUATION STA. 144+18.44 = STA. 145+99.04					
STA 145+99.04	TO	STA 146+91.73	0	CENTERLINE RUMBLE 92.7	
				TOTAL	3080

MODEL: Untitled2 (Sheet)
 FILE NAME: c:\p\work\wv\wv\card\johnson@illinois.gov\d0907503\Schedule of Quantities.dgn

USER NAME = Carl.Johnson	DESIGNED -	REVISED -
PLOT SCALE = 0.16666833' / in.	DRAWN -	REVISED -
PLOT DATE = 1/26/2024	CHECKED -	REVISED -
	DATE -	REVISED -

**STATE OF ILLINOIS
DEPARTMENT OF TRANSPORTATION**

SCHEDULE OF QUANTITIES

SCALE: SHEET 3 OF 4 SHEETS STA. TO STA.

F.A.P RTE.	SECTION	COUNTY	TOTAL SHEETS	SHEET NO.
*	(107, 108, 109)Q	MACOUPIN	31	12
CONTRACT NO. 72265				
ILLINOIS FED. AID PROJECT				

FOG SEAL							
STATIONING		DESCRIPTION	WIDTH (FOOT)	LENGTH (FOOT)	AREA (SQ YD)	X4060107 BITUMINOUS MATERIALS (FOG SEAL) (POUND)	
IL 108 SOUTH SECTION							
STA 79+63.73	TO	STA 120+60.34	MAINLINE	25.5	4096.61	11607.1	8357.1
RT STA 111+91.34	TO	RT STA 146+91.73	SHOULDER	3	3079.64	1026.193	738.9
LT STA 111+88.54	TO	LT STA 146+90	SHOULDER	3	3080.72	1063.57	765.8
STATION EQUATION STA. 120+60.34 = STA. 123+00.48							
STA 123+00.48	TO	STA 144+18.44	MAINLINE	25.5	2117.96	6000.9	4320.6
STATION EQUATION STA. 144+18.44 = STA. 145+99.04							
STA 145+99.04	TO	STA 201+38.72	MAINLINE	25.5	5539.68	15695.8	11300.9
STA 201+39.18	TO	STA 249+99.94	MAINLINE	25.5	4860.76	13772.2	9916.0
STA 250+00.06	TO	STA 332+89.53	MAINLINE	25.5	8289.47	23486.8	16910.5
STA 332+89.64	TO	STA 350+00	MAINLINE	25.5	1710.36	4846.0	3489.1
STA 350+00	TO	STA 354+84.3	MAINLINE	24	484.3	1291.5	929.9
STATION EQUATION STA. 354+84.3 = STA. 355+59.63							
STA 355+59.63	TO	STA 357+69.71	MAINLINE	26	210.08	606.9	437.0
BRIDGE OMMISION STA. 357+69.71 TO STA. 359+21.71							
RT STA 359+21.71	TO	RT STA 362+52.22	MAINLINE	13	330.52	477.4	343.7
LT STA 359+21.71	TO	LT STA 362+47.76	MAINLINE	13	326.12	471.1	339.2
RT STA 359+20.17	TO	RT STA 367+95.00	SHOULDER	3	874.83	291.61	210.0
LT STA 359+20.17	TO	LT STA 366+84.00	SHOULDER	3	763.83	254.61	183.3
RT STA 362+52.22	TO	RT STA 372+83.37	MAINLINE	12	1031.15	1374.9	989.9
LT STA 362+47.76	TO	LT STA 372+83.37	MAINLINE	12	1035.61	1380.8	994.2
STATION EQUATION STA. 372+83.37 = STA. 373+47.71							
RT STA 373+47.71	TO	RT STA 375+32.5	MAINLINE	12	184.79	246.4	177.4
LT STA 373+47.71	TO	LT STA 375+35	MAINLINE	12	187.29	249.7	179.8
RT STA 375+32.5	TO	RT STA 472+50	MAINLINE	12.75	9717.5	13766.5	9911.9
LT STA 375+35	TO	LT STA 472+50	MAINLINE	12.75	9715	13762.9	9909.3
RT STA 472+50	TO	RT STA 479+17.78	MAINLINE	13	667.78	964.6	694.5
LT STA 472+50	TO	LT STA 478+92.88	MAINLINE	13	642.88	928.6	668.6
RT STA 479+17.78	TO	RT STA 479+86	MAINLINE	VARIES	68.22	305.7	220.1
LT STA 478+92.88	TO	LT STA 479+86	MAINLINE	VARIES	93.12	330.0	237.6
IL 108 NORTH SECTION							
RT STA 527+44.25	TO	RT STA 526+58.77	MAINLINE	VARIES	101.5	349.7	251.8
LT STA 527+70.92	TO	LT STA 526+44.25	MAINLINE	VARIES	74.83	334.5	240.8
RT STA 527+58.77	TO	RT STA 532+91.99	MAINLINE	13	533.21	770.2	554.5
LT STA 527+44.25	TO	LT STA 532+91.99	MAINLINE	13	547.74	791.2	569.6
					SUBTOTAL	116447.2	83842.0

FOG SEAL							
STATIONING		DESCRIPTION	WIDTH (FOOT)	LENGTH (FOOT)	AREA (SQ YD)	X4060107 BITUMINOUS MATERIALS (FOG SEAL) (POUND)	
FOG SEAL CONTINUED							
IL 111							
LT STA 884+69.69	TO	LT STA 890+90.14	MAINLINE	13	620.45	896.2	645.3
RT STA 884+69.69	TO	RT STA 890+43.61	MAINLINE	13	573.92	829.0	596.9
LT STA 891+78.64	TO	LT STA 908+15.54	MAINLINE	13	1636.90	2364.4	1702.4
RT STA 892+64.78	TO	RT STA 908+15.54	MAINLINE	13	1550.76	2240.0	1612.8
RT STA 901+45.48	TO	RT STA 908+15.54	SHOULDER	3	670.05	223.35	160.8
LT STA 902+60.56	TO	LT STA 908+15.54	SHOULDER	3	554.97	184.99	133.2
BRIDGE OMMISION STA. 908+15.54 TO STA. 909+58.67							
LT STA 909+58.67	TO	LT STA 936+64.81	MAINLINE	13	2706.14	3908.9	2814.4
RT STA 909+58.67	TO	RT STA 942+91.74	MAINLINE	13	333.07	481.1	346.4
RT STA 909+58.67	TO	RT STA 921+92	SHOULDER	3	1233.33	411.11	296.0
LT STA 909+58.67	TO	LT STA 922+57.44	SHOULDER	3	1298.77	432.92	311.7
STATION EQUATION STA. 942+91.74 = STA. 943+00.35							
STA 943+00.35	TO	STA 943+92.002	MAINLINE	26	91.65	264.8	190.6
CUMBERLAND RD							
STA 10+13	TO	STA 10+29.37	MAINLINE	VARIES	16.37	104.3	75.1
					SUBTOTAL	12341.0	8885.5
					TOTAL	128788.2	92727.5

MODEL: Unlited-3 [Sheet]
 FILE NAME: c:\pw\work\paw\locat\johnson@illinois.gov\07503\Schedule of Quantities.dgn

USER NAME = Carl Johnson	DESIGNED -	REVISED -
	DRAWN -	REVISED -
PLOT SCALE = \$\$CALES	CHECKED -	REVISED -
PLOT DATE = 1/26/2024	DATE -	REVISED -

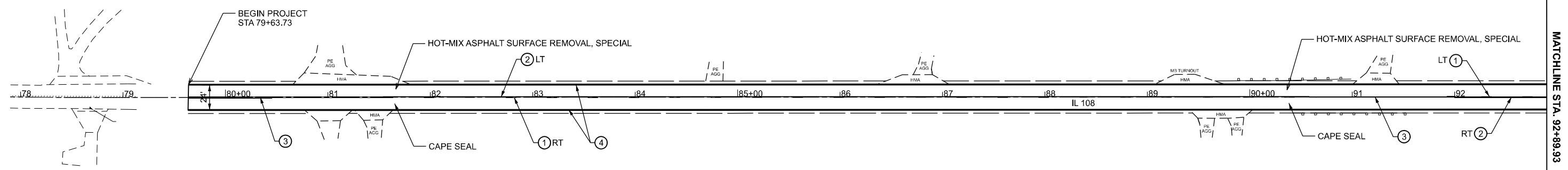
**STATE OF ILLINOIS
DEPARTMENT OF TRANSPORTATION**

SCHEDULE OF QUANTITIES

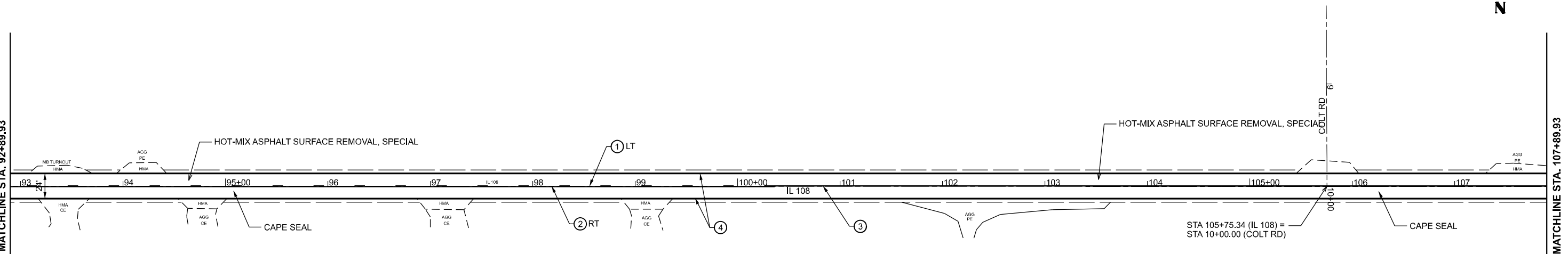
SCALE: SHEET 4 OF 4 SHEETS STA. TO STA.

F.A.P. RTE.	SECTION	COUNTY	TOTAL SHEETS	SHEET NO.
*	(107, 108, 109)Q	MACOUPIN	31	13
ILLINOIS FED. AID PROJECT				
CONTRACT NO. 72265				

*608, 761, 765 (IL 108, 111)



MATCHLINE STA. 92+89.93



MATCHLINE STA. 107+89.93

- ① PROP. MODIFIED URETHANE PAVEMENT MARKING (YELLOW SKIP-DASH) - LINE 5"
- ② PROP. MODIFIED URETHANE PAVEMENT MARKING (YELLOW) - LINE 5"
- ③ PROP. MODIFIED URETHANE PAVEMENT MARKING (DOUBLE YELLOW) - LINE 5"
- ④ PROP. MODIFIED URETHANE PAVEMENT MARKING (WHITE) - LINE 5"
- ⑤ PROP. MODIFIED URETHANE PAVEMENT MARKING (WHITE) - LINE 24"

MODEL: EXCL-10-108_South_Section_Sheet1
FILE NAME: c:\p\work\pav\card\johnson@illinois.gov\d907503\Sheets.dgn

USER NAME = Carl Johnson	DESIGNED -	REVISED -
DRAWN -	REVISOR -	
PLOT SCALE = 0.16666633' / in.	CHECKED -	REVISED -
PLOT DATE = 1/29/2024	DATE -	REVISED -

**STATE OF ILLINOIS
DEPARTMENT OF TRANSPORTATION**

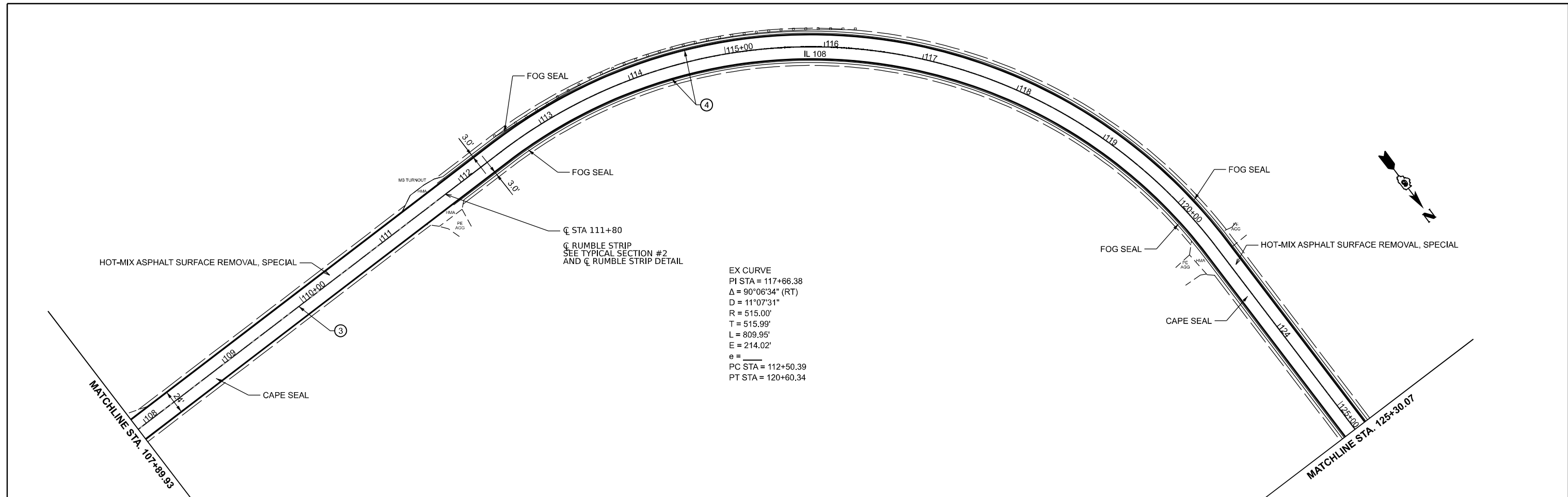
**PLAN SHEETS
IL 108**

SCALE: 1"=50' SHEET 1 OF 18 SHEETS STA. 35+22.63 TO STA. 65+22.63

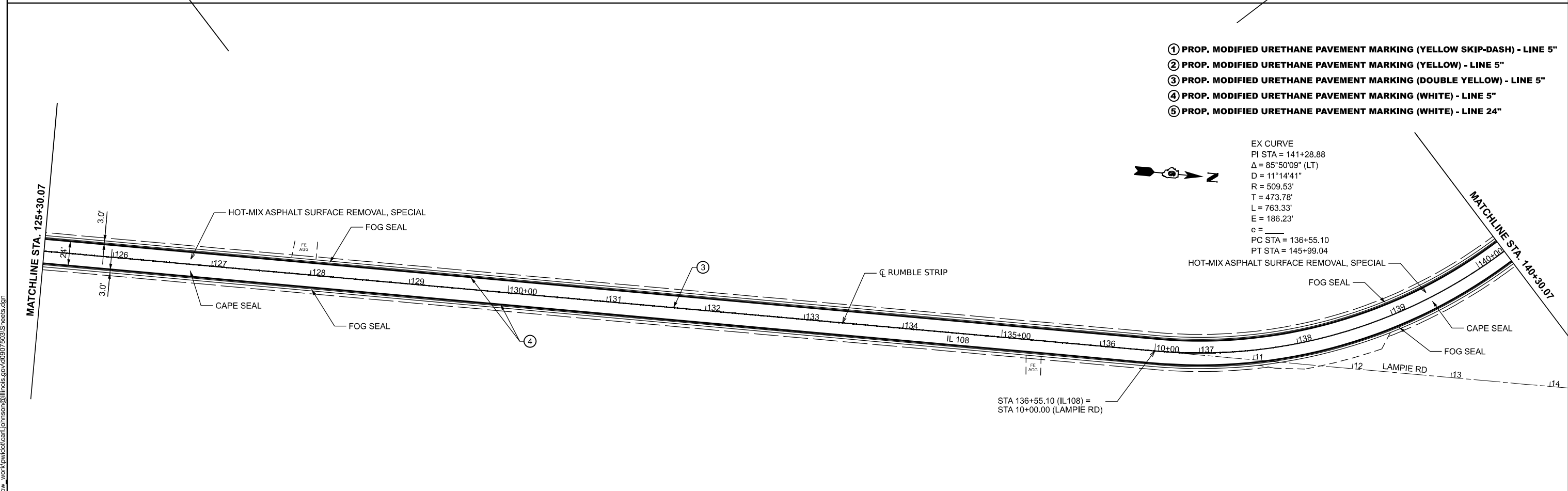
F.A.P. RTE.	SECTION	COUNTY	TOTAL SHEETS	SHEET NO.
*	(107, 108, 109)Q	MACOUPIN	31	14
CONTRACT NO. 72265				

*608, 761, 765 (IL 108, 111)

MODEL: EXCL 10 - 108 - South Section-2 (Sheet)
 FILE NAME: c:\p\work\pav\clcard\johnson@illinois.gov\d07503\Sheets.dgn



EX CURVE
 PI STA = 117+66.38
 $\Delta = 90^{\circ}06'34''$ (RT)
 $D = 11^{\circ}07'31''$
 $R = 515.00'$
 $T = 515.99'$
 $L = 809.95'$
 $E = 214.02'$
 $e =$
 PC STA = 112+50.39
 PT STA = 120+60.34



EX CURVE
 PI STA = 141+28.88
 $\Delta = 85^{\circ}50'09''$ (LT)
 $D = 11^{\circ}14'41''$
 $R = 509.53'$
 $T = 473.78'$
 $L = 763.33'$
 $E = 186.23'$
 $e =$
 PC STA = 136+55.10
 PT STA = 145+99.04

STA 136+55.10 (IL108) =
 STA 10+00.00 (LAMPPIE RD)

- ① PROP. MODIFIED URETHANE PAVEMENT MARKING (YELLOW SKIP-DASH) - LINE 5"
- ② PROP. MODIFIED URETHANE PAVEMENT MARKING (YELLOW) - LINE 5"
- ③ PROP. MODIFIED URETHANE PAVEMENT MARKING (DOUBLE YELLOW) - LINE 5"
- ④ PROP. MODIFIED URETHANE PAVEMENT MARKING (WHITE) - LINE 5"
- ⑤ PROP. MODIFIED URETHANE PAVEMENT MARKING (WHITE) - LINE 24"

USER NAME = Carl.Johnson	DESIGNED -	REVISED -
DRAWN -	REVISED -	
PLOT SCALE = 0.16666633' / in.	CHECKED -	REVISED -
PLOT DATE = 1/29/2024	DATE -	REVISED -

**STATE OF ILLINOIS
 DEPARTMENT OF TRANSPORTATION**

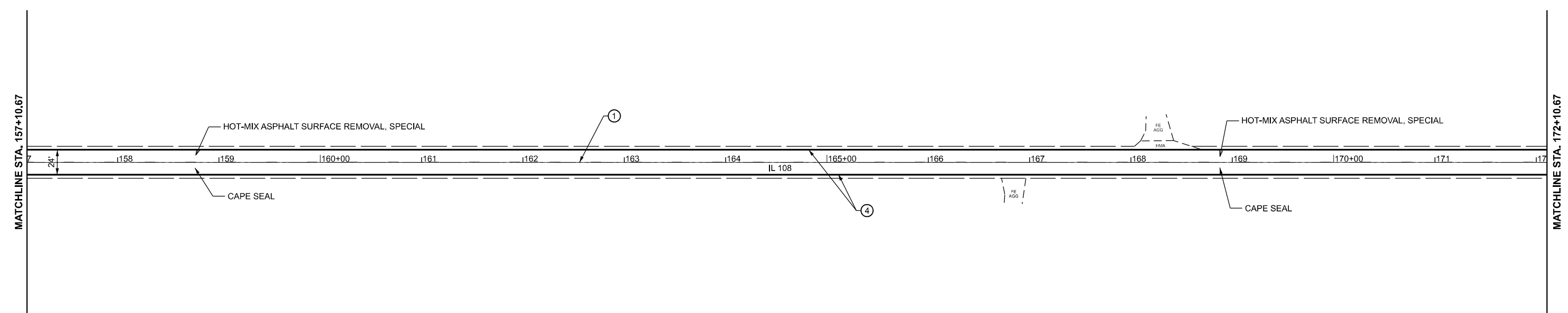
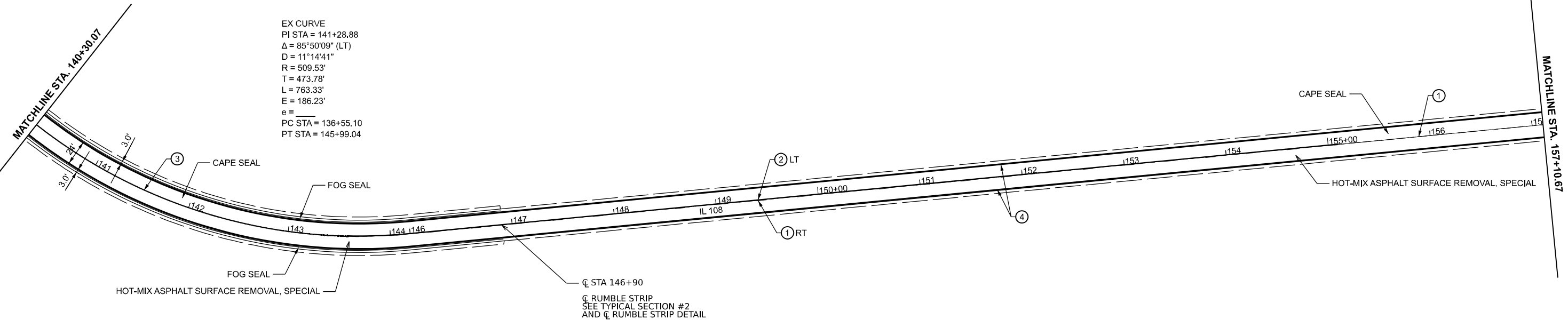
**PLAN SHEETS
 IL 108**

SCALE: 1"=50' SHEET 2 OF 18 SHEETS STA. 65+22.63 TO STA. 95+22.63

F.A.P. RTE.	SECTION	COUNTY	TOTAL SHEETS	SHEET NO.
*	(107, 108, 109)Q	MACOUPIN	31	15
CONTRACT NO. 72265				



EX CURVE
 PI STA = 141+28.88
 $\Delta = 85^{\circ}50'09''$ (LT)
 $D = 11^{\circ}14'41''$
 $R = 509.53'$
 $T = 473.78'$
 $L = 763.33'$
 $E = 186.23'$
 $e =$
 PC STA = 136+55.10
 PT STA = 145+99.04



- ① PROP. MODIFIED URETHANE PAVEMENT MARKING (YELLOW SKIP-DASH) - LINE 5"
- ② PROP. MODIFIED URETHANE PAVEMENT MARKING (YELLOW) - LINE 5"
- ③ PROP. MODIFIED URETHANE PAVEMENT MARKING (DOUBLE YELLOW) - LINE 5"
- ④ PROP. MODIFIED URETHANE PAVEMENT MARKING (WHITE) - LINE 5"
- ⑤ PROP. MODIFIED URETHANE PAVEMENT MARKING (WHITE) - LINE 24"

MODEL: EXCL 10 - 108 South Section-4 (Sheet)
 FILE NAME: c:\p\work\w108\carl.johnson@illinois.gov\d0907503\Sheets.dgn

USER NAME = Carl.Johnson	DESIGNED -	REVISED -
DRAWN -	REVISED -	
PLOT SCALE = 0.16666633' / in.	CHECKED -	REVISED -
PLOT DATE = 1/24/2024	DATE -	REVISED -

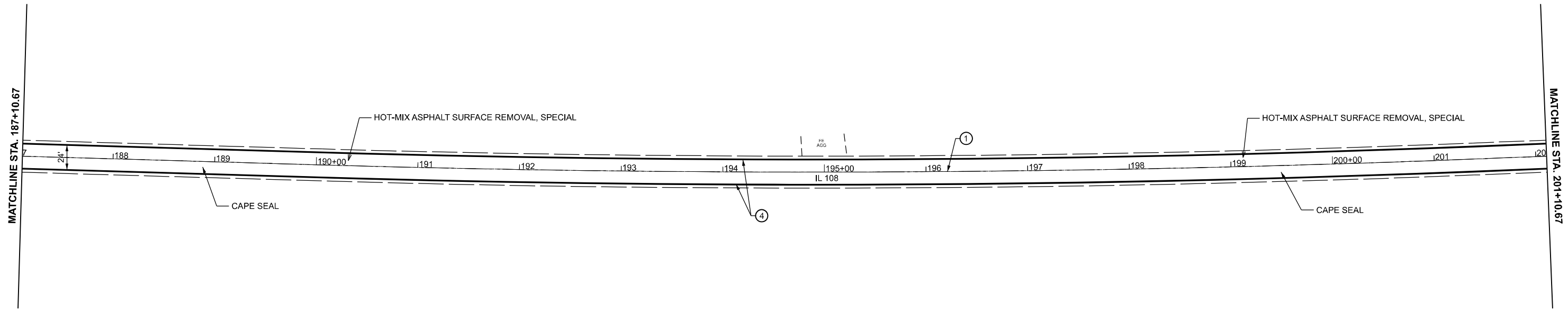
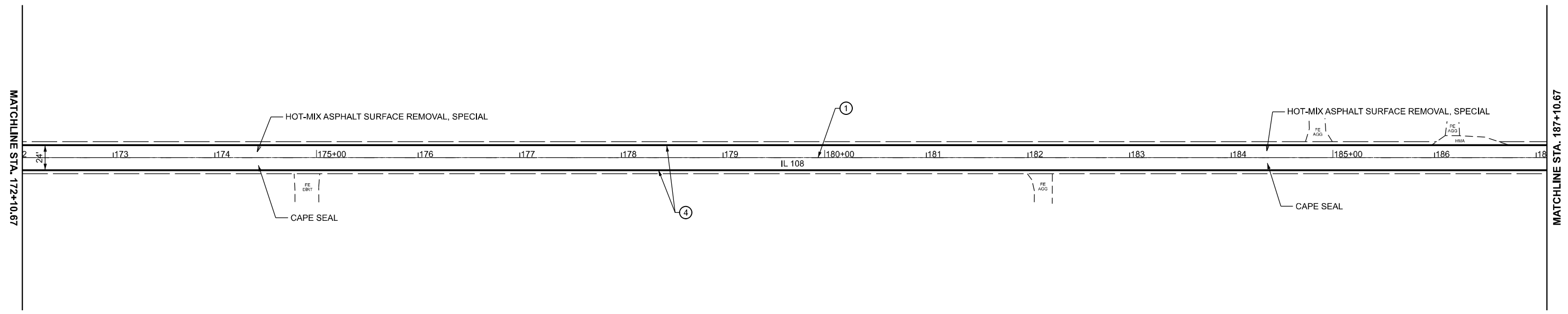
**STATE OF ILLINOIS
 DEPARTMENT OF TRANSPORTATION**

**PLAN SHEETS
 IL 108**

SCALE: 1"=50' SHEET 3 OF 18 SHEETS STA. 95+22.63 TO STA. 125+22.63

F.A.P. RTE.	SECTION	COUNTY	TOTAL SHEETS	SHEET NO.
*	(107, 108, 109)Q	MACOUPIN	31	16
CONTRACT NO. 72265				
ILLINOIS FED. AID PROJECT				

*608, 761, 765 (IL 108, 111)



- ① PROP. MODIFIED URETHANE PAVEMENT MARKING (YELLOW SKIP-DASH) - LINE 5"
- ② PROP. MODIFIED URETHANE PAVEMENT MARKING (YELLOW) - LINE 5"
- ③ PROP. MODIFIED URETHANE PAVEMENT MARKING (DOUBLE YELLOW) - LINE 5"
- ④ PROP. MODIFIED URETHANE PAVEMENT MARKING (WHITE) - LINE 5"
- ⑤ PROP. MODIFIED URETHANE PAVEMENT MARKING (WHITE) - LINE 24"

MODEL: EXCL 10 - 108 South Section 6 (Sheet)
 FILE NAME: c:\p\work\1010carl.johnson@illinois.gov\10107503\Sheets.dgn

USER NAME = Carl.Johnson	DESIGNED -	REVISED -
	DRAWN -	REVISED -
PLOT SCALE = 0.16666633' / in.	CHECKED -	REVISED -
PLOT DATE = 1/25/2024	DATE -	REVISED -

**STATE OF ILLINOIS
DEPARTMENT OF TRANSPORTATION**

**PLAN SHEETS
IL 108**

SCALE: 1"=50' SHEET 4 OF 18 SHEETS STA. 125+22.63 TO STA. 155+22.63

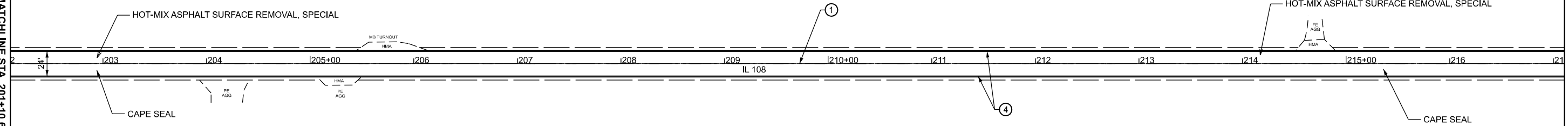
F.A.P. RTE.	SECTION	COUNTY	TOTAL SHEETS	SHEET NO.
*	(107, 108, 109)Q	MACOUPIN	31	17
CONTRACT NO. 72265				
ILLINOIS FED. AID PROJECT				

*608, 761, 765 (IL 108, 111)



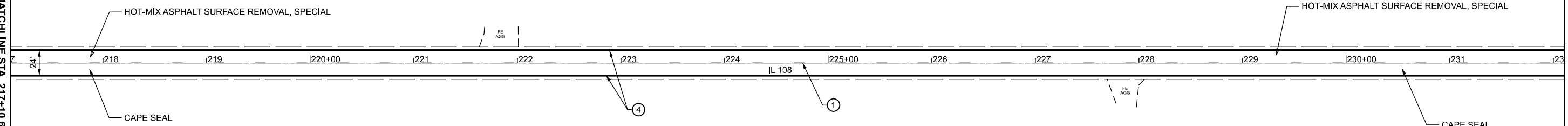
MATCHLINE STA. 201+10.67

MATCHLINE STA. 217+10.67



MATCHLINE STA. 217+10.67

MATCHLINE STA. 232+10.67



- ① PROP. MODIFIED URETHANE PAVEMENT MARKING (YELLOW SKIP-DASH) - LINE 5"
- ② PROP. MODIFIED URETHANE PAVEMENT MARKING (YELLOW) - LINE 5"
- ③ PROP. MODIFIED URETHANE PAVEMENT MARKING (DOUBLE YELLOW) - LINE 5"
- ④ PROP. MODIFIED URETHANE PAVEMENT MARKING (WHITE) - LINE 5"
- ⑤ PROP. MODIFIED URETHANE PAVEMENT MARKING (WHITE) - LINE 24"

MODEL: EXCL 10 - 108 - South Section - 8 (Sheet)
FILE NAME: c:\p\work\pav\clcard\johnson@illinois.gov\0907503\Sheets.dgn

USER NAME = Carl Johnson	DESIGNED -	REVISED -
	DRAWN -	REVISED -
PLOT SCALE = 0.16666633' / in.	CHECKED -	REVISED -
PLOT DATE = 1/29/2024	DATE -	REVISED -

**STATE OF ILLINOIS
DEPARTMENT OF TRANSPORTATION**

**PLAN SHEETS
IL 108**

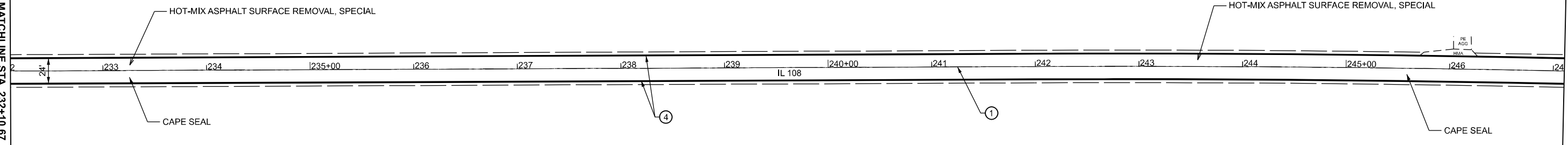
SCALE: 1"=50' SHEET 5 OF 18 SHEETS STA. 155+22.63 TO STA. 185+22.63

F.A.P. RTE.	SECTION	COUNTY	TOTAL SHEETS	SHEET NO.
*	(107, 108, 109)Q	MACOUPIN	31	18
CONTRACT NO. 72265				
ILLINOIS FED. AID PROJECT				



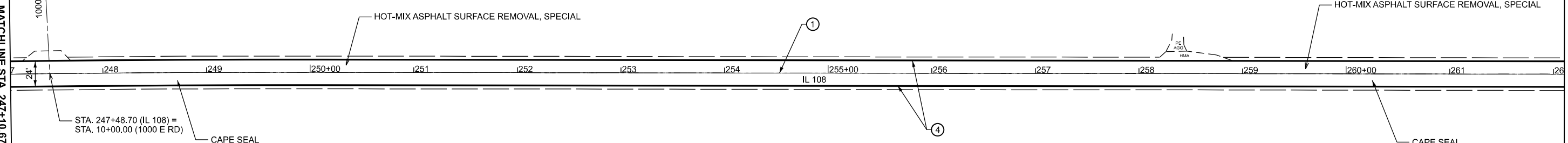
MATCHLINE STA. 232+10.67

MATCHLINE STA. 247+10.67



MATCHLINE STA. 247+10.67

MATCHLINE STA. 262+10.67



- ① PROP. MODIFIED URETHANE PAVEMENT MARKING (YELLOW SKIP-DASH) - LINE 5"
- ② PROP. MODIFIED URETHANE PAVEMENT MARKING (YELLOW) - LINE 5"
- ③ PROP. MODIFIED URETHANE PAVEMENT MARKING (DOUBLE YELLOW) - LINE 5"
- ④ PROP. MODIFIED URETHANE PAVEMENT MARKING (WHITE) - LINE 5"
- ⑤ PROP. MODIFIED URETHANE PAVEMENT MARKING (WHITE) - LINE 24"

MODEL: EXCL-10-108_South_Section-101_Sheet1
FILE NAME: c:\p\work\road\card\johnson\illinois.dwg\07503\Sheets.dwg

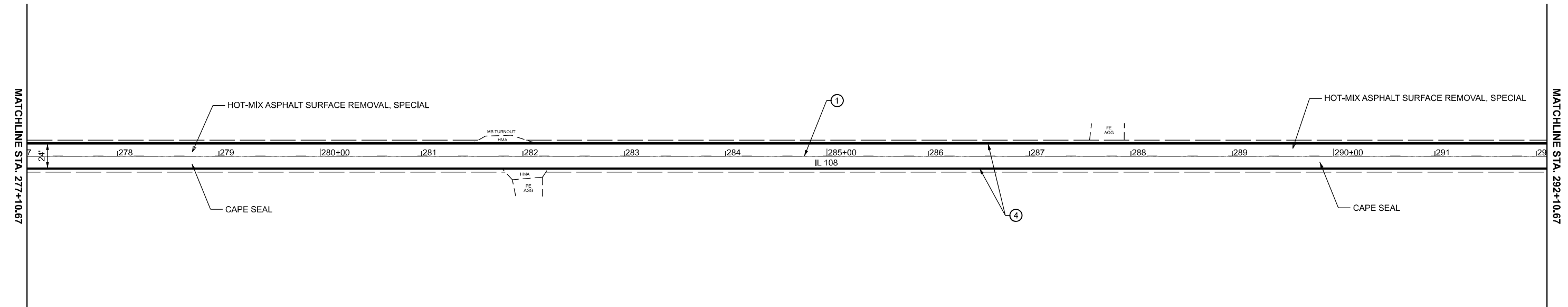
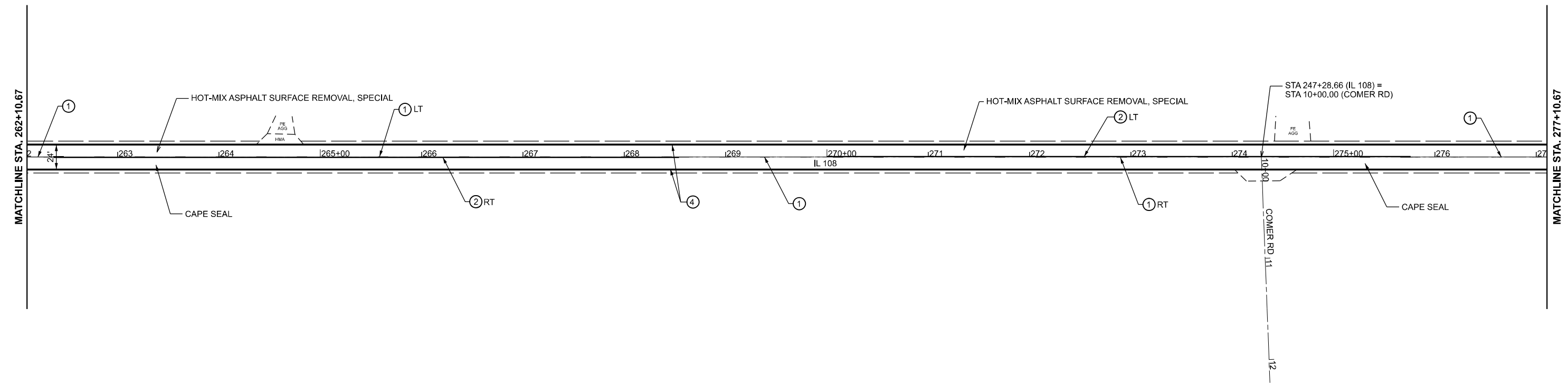
USER NAME = Carl.Johnson	DESIGNED -	REVISED -
DRAWN -	REVISOR -	
PLOT SCALE = 0.16666633' / in.	CHECKED -	REVISOR -
PLOT DATE = 1/25/2024	DATE -	REVISOR -

**STATE OF ILLINOIS
DEPARTMENT OF TRANSPORTATION**

**PLAN SHEETS
IL 108**

SCALE: 1"=50' SHEET 6 OF 18 SHEETS STA. 185+22.63 TO STA. 215+22.63

F.A.P. RTE.	SECTION	COUNTY	TOTAL SHEETS	SHEET NO.
*	(107, 108, 109)Q	MACOUPIN	31	19
CONTRACT NO. 72265				



- ① PROP. MODIFIED URETHANE PAVEMENT MARKING (YELLOW SKIP-DASH) - LINE 5"
- ② PROP. MODIFIED URETHANE PAVEMENT MARKING (YELLOW) - LINE 5"
- ③ PROP. MODIFIED URETHANE PAVEMENT MARKING (DOUBLE YELLOW) - LINE 5"
- ④ PROP. MODIFIED URETHANE PAVEMENT MARKING (WHITE) - LINE 5"
- ⑤ PROP. MODIFIED URETHANE PAVEMENT MARKING (WHITE) - LINE 24"

MODEL: EXCL 10 - 108_South_Section-12 [Sheet]
 FILE NAME: c:\p\work\pav\card\johnson\illinois.dwg\07503\Sheets.dgn

USER NAME = Carl Johnson	DESIGNED -	REVISED -
	DRAWN -	REVISED -
PLOT SCALE = 0.16666633' / in.	CHECKED -	REVISED -
PLOT DATE = 1/29/2024	DATE -	REVISED -

**STATE OF ILLINOIS
DEPARTMENT OF TRANSPORTATION**

**PLAN SHEETS
IL 108**

SCALE: 1"=50' SHEET 7 OF 18 SHEETS STA. 215+22.63 TO STA. 245+22.63

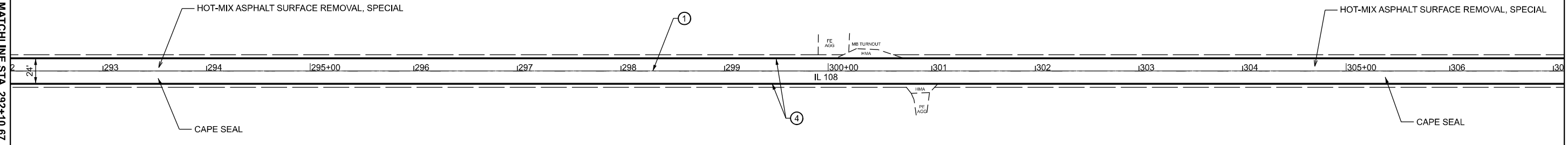
F.A.P. RTE.	SECTION	COUNTY	TOTAL SHEETS	SHEET NO.
*	(107, 108, 109)Q	MACOUPIN	31	20
CONTRACT NO. 72265				
ILLINOIS FED. AID PROJECT				

*608, 761, 765 (IL 108, 111)



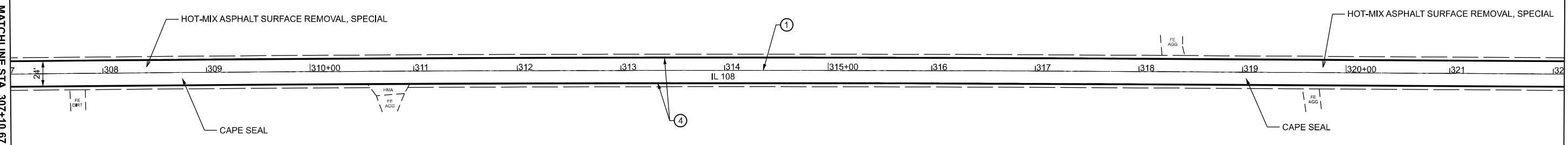
MATCHLINE STA. 292+10.67

MATCHLINE STA. 307+10.67



MATCHLINE STA. 307+10.67

MATCHLINE STA. 322+10.67



- ① PROP. MODIFIED URETHANE PAVEMENT MARKING (YELLOW SKIP-DASH) - LINE 5"
- ② PROP. MODIFIED URETHANE PAVEMENT MARKING (YELLOW) - LINE 5"
- ③ PROP. MODIFIED URETHANE PAVEMENT MARKING (DOUBLE YELLOW) - LINE 5"
- ④ PROP. MODIFIED URETHANE PAVEMENT MARKING (WHITE) - LINE 5"
- ⑤ PROP. MODIFIED URETHANE PAVEMENT MARKING (WHITE) - LINE 24"

MODEL: EXCL 10 - 108_South_Section-14 [Sheet]
FILE NAME: c:\p\work\wv\road\carl.johnson\il108\p\07503\Sheets.dgn

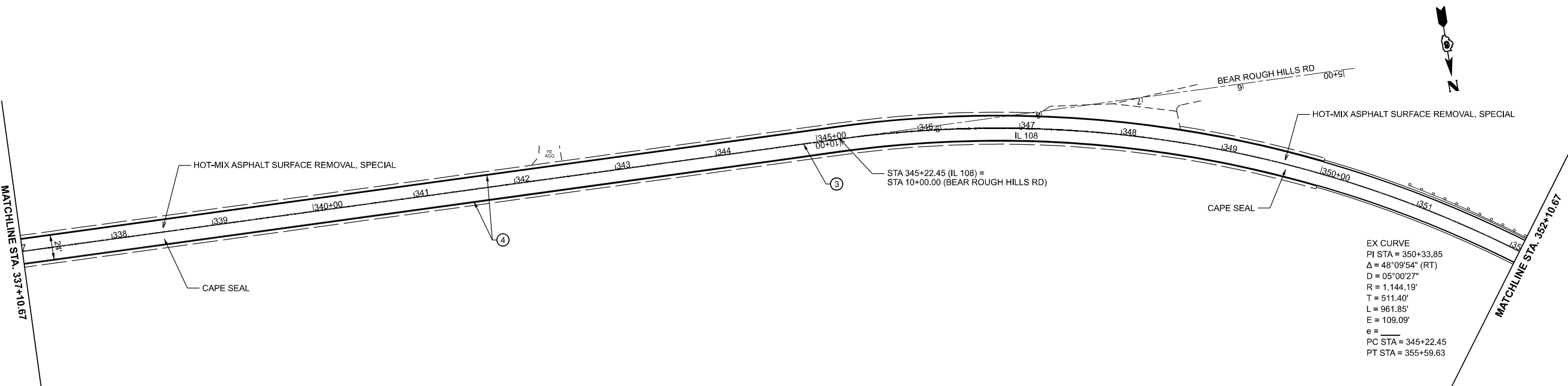
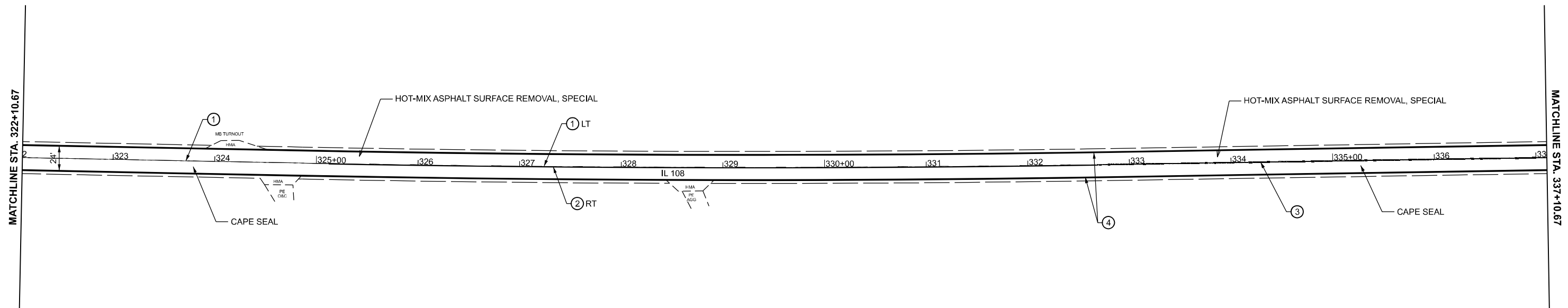
USER NAME = Carl.Johnson	DESIGNED -	REVISED -
DRAWN -	REVISOR -	REVISION -
PLOT SCALE = 0.16666633' / in.	CHECKED -	REVISOR -
PLOT DATE = 1/26/2024	DATE -	REVISION -

**STATE OF ILLINOIS
DEPARTMENT OF TRANSPORTATION**

**PLAN SHEETS
IL 108**

SCALE: 1"=50' SHEET 8 OF 18 SHEETS STA. 245+22.63 TO STA. 275+22.63

F.A.P. RTE.	SECTION	COUNTY	TOTAL SHEETS	SHEET NO.
*	(107, 108, 109)Q	MACOUPIN	31	21
CONTRACT NO. 72265				



- ① PROP. MODIFIED URETHANE PAVEMENT MARKING (YELLOW SKIP-DASH) - LINE 5"
- ② PROP. MODIFIED URETHANE PAVEMENT MARKING (YELLOW) - LINE 5"
- ③ PROP. MODIFIED URETHANE PAVEMENT MARKING (DOUBLE YELLOW) - LINE 5"
- ④ PROP. MODIFIED URETHANE PAVEMENT MARKING (WHITE) - LINE 5"
- ⑤ PROP. MODIFIED URETHANE PAVEMENT MARKING (WHITE) - LINE 24"

MODEL: EXCL 10-108 South Section-16 (Sheet)
 FILE NAME: c:\p\work\10108\card\johnson\10108\10108.dgn

USER NAME = Carl Johnson	DESIGNED -	REVISED -
DRAWN -	REVISED -	
PLOT SCALE = 0.16666633' / in.	CHECKED -	REVISED -
PLOT DATE = 1/29/2024	DATE -	REVISED -

**STATE OF ILLINOIS
DEPARTMENT OF TRANSPORTATION**

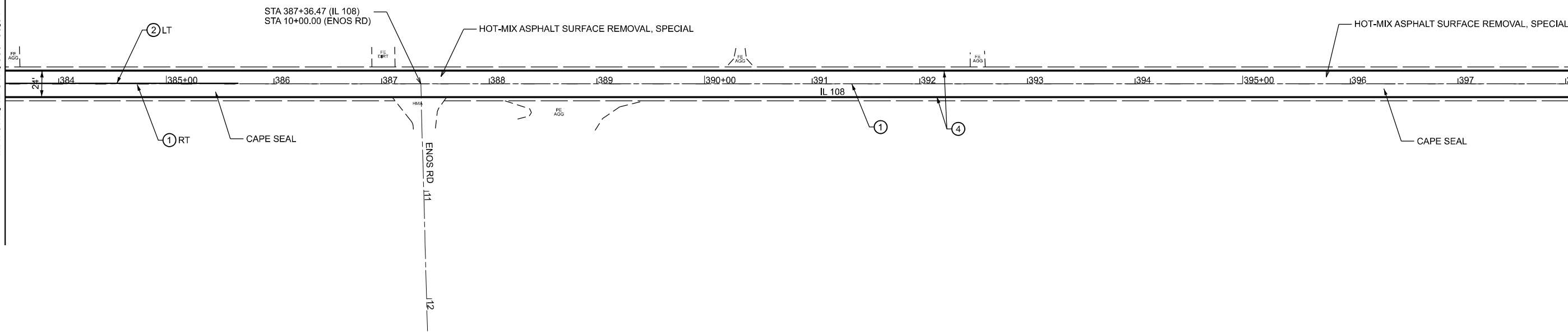
PLAN SHEETS			
IL 108			
SCALE: 1"=50'	SHEET 9	OF 18 SHEETS	STA. 275+22.63 TO STA. 305+22.63

F.A.P. RTE.	SECTION	COUNTY	TOTAL SHEETS	SHEET NO.
*	(107, 108, 109)Q	MACOUPIN	31	22
CONTRACT NO. 72265				
ILLINOIS FED. AID PROJECT				



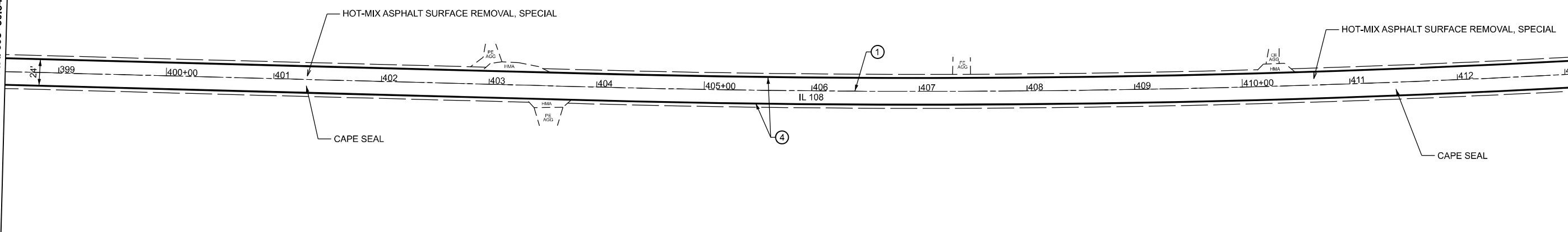
MATCHLINE STA. 383+50.34

MATCHLINE STA. 398+50.34



MATCHLINE STA. 398+50.34

MATCHLINE STA. 413+50.34



- ① PROP. MODIFIED URETHANE PAVEMENT MARKING (YELLOW SKIP-DASH) - LINE 5"
- ② PROP. MODIFIED URETHANE PAVEMENT MARKING (YELLOW) - LINE 5"
- ③ PROP. MODIFIED URETHANE PAVEMENT MARKING (DOUBLE YELLOW) - LINE 5"
- ④ PROP. MODIFIED URETHANE PAVEMENT MARKING (WHITE) - LINE 5"
- ⑤ PROP. MODIFIED URETHANE PAVEMENT MARKING (WHITE) - LINE 24"

MODEL: EXCL-10-108_South_Section-20 [Sheet]
FILE NAME: c:\p\work\10108\card\johnson\illinois.gpd\07503\Sheets.dgn

USER NAME = Carl.Johnson	DESIGNED -	REVISED -
DRAWN -	REVISOR -	
PLOT SCALE = 0.16666633' / in.	CHECKED -	REVISOR -
PLOT DATE = 1/29/2024	DATE -	REVISOR -

**STATE OF ILLINOIS
DEPARTMENT OF TRANSPORTATION**

**PLAN SHEETS
IL 108**

SCALE: 1"=50' SHEET 11 OF 18 SHEETS STA. 335+22.63 TO STA. 365+22.63

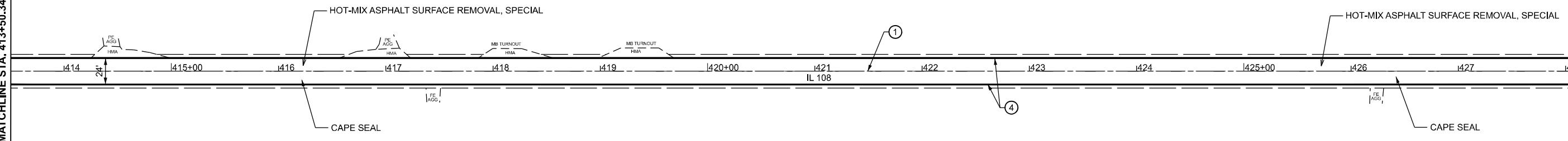
F.A.P. RTE.	SECTION	COUNTY	TOTAL SHEETS	SHEET NO.
*	(107, 108, 109)Q	MACOUPIN	31	24
CONTRACT NO. 72265				
ILLINOIS FED. AID PROJECT				

*608, 761, 765 (IL 108, 111)



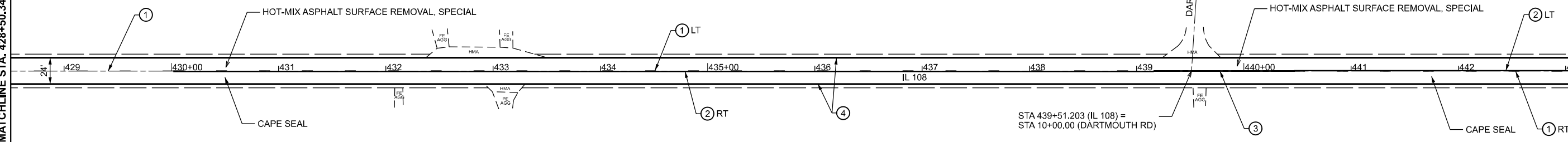
MATCHLINE STA. 413+50.34

MATCHLINE STA. 428+50.34



MATCHLINE STA. 428+50.34

MATCHLINE STA. 443+50.34



STA 439+51.203 (IL 108) =
STA 10+00.00 (DARTMOUTH RD)

- ① PROP. MODIFIED URETHANE PAVEMENT MARKING (YELLOW SKIP-DASH) - LINE 5"
- ② PROP. MODIFIED URETHANE PAVEMENT MARKING (YELLOW) - LINE 5"
- ③ PROP. MODIFIED URETHANE PAVEMENT MARKING (DOUBLE YELLOW) - LINE 5"
- ④ PROP. MODIFIED URETHANE PAVEMENT MARKING (WHITE) - LINE 5"
- ⑤ PROP. MODIFIED URETHANE PAVEMENT MARKING (WHITE) - LINE 24"

MODEL: EXCL-10-108_South_Section-22_Sheet1
FILE NAME: c:\p\work\pav\card\johnson@illinois.gov\d907503\Sheets.dgn

USER NAME = Carl.Johnson	DESIGNED -	REVISED -
DRAWN -	REVISED -	
PLOT SCALE = 0.16666833' / in.	CHECKED -	REVISED -
PLOT DATE = 1/26/2024	DATE -	REVISED -

**STATE OF ILLINOIS
DEPARTMENT OF TRANSPORTATION**

**PLAN SHEETS
IL 108**

SCALE: 1"=50' SHEET 12 OF 18 SHEETS STA. 365+22.63 TO STA. 395+22.63

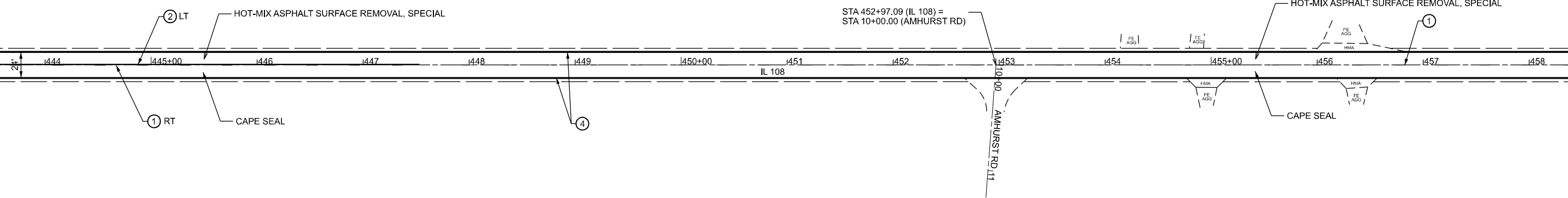
F.A.P. RTE.	SECTION	COUNTY	TOTAL SHEETS	SHEET NO.
*	(107, 108, 109)Q	MACOUPIN	31	25
CONTRACT NO. 72265				
ILLINOIS FED. AID PROJECT				

*608, 761, 765 (IL 108, 111)



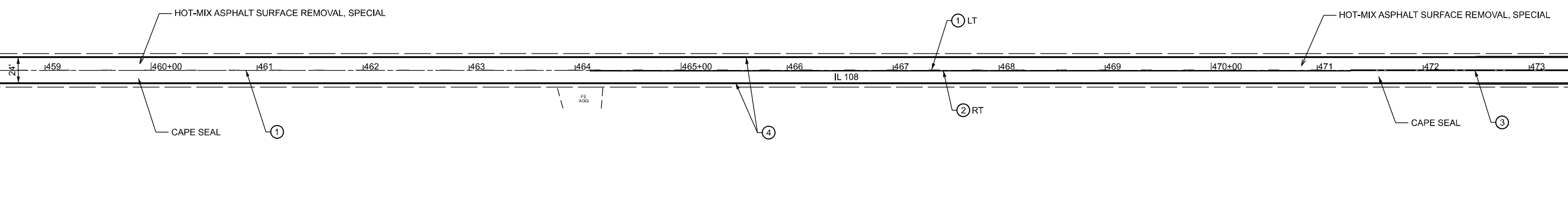
MATCHLINE STA. 443+50.34

MATCHLINE STA. 458+50.34



MATCHLINE STA. 458+50.34

MATCHLINE STA. 473+50.34



- ① PROP. MODIFIED URETHANE PAVEMENT MARKING (YELLOW SKIP-DASH) - LINE 5"
- ② PROP. MODIFIED URETHANE PAVEMENT MARKING (YELLOW) - LINE 5"
- ③ PROP. MODIFIED URETHANE PAVEMENT MARKING (DOUBLE YELLOW) - LINE 5"
- ④ PROP. MODIFIED URETHANE PAVEMENT MARKING (WHITE) - LINE 5"
- ⑤ PROP. MODIFIED URETHANE PAVEMENT MARKING (WHITE) - LINE 24"

MODEL: EXCL-10-108_South_Section-24 | Sheet1
FILE NAME: c:\p\work\pav\clcard\johnson@illinois.gov\d0907503\Sheets.dgn

USER NAME = Carl.Johnson	DESIGNED -	REVISED -
DRAWN -	REVISIONS -	
PLOT SCALE = 0.16666633' / in.	CHECKED -	REVISED -
PLOT DATE = 1/26/2024	DATE -	REVISED -

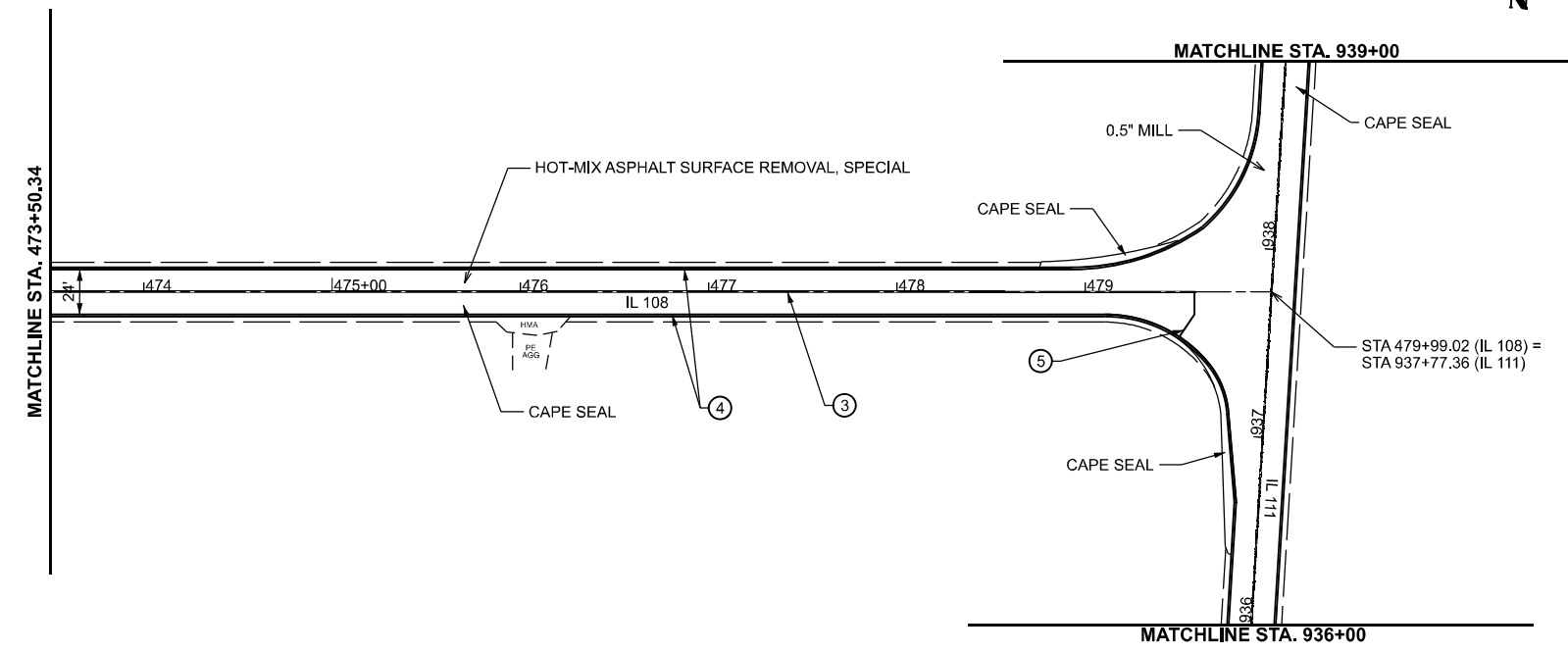
**STATE OF ILLINOIS
DEPARTMENT OF TRANSPORTATION**

**PLAN SHEETS
IL 108**

SCALE: 1"=50' SHEET 13 OF 18 SHEETS STA. 395+22.63 TO STA. 425+22.63

F.A.P. RTE.	SECTION	COUNTY	TOTAL SHEETS	SHEET NO.
*	(107, 108, 109)Q	MACOUPIN	31	26
CONTRACT NO. 72265				
ILLINOIS FED. AID PROJECT				

*608, 761, 765 (IL 108, 111)



- ① PROP. MODIFIED URETHANE PAVEMENT MARKING (YELLOW SKIP-DASH) - LINE 5"
- ② PROP. MODIFIED URETHANE PAVEMENT MARKING (YELLOW) - LINE 5"
- ③ PROP. MODIFIED URETHANE PAVEMENT MARKING (DOUBLE YELLOW) - LINE 5"
- ④ PROP. MODIFIED URETHANE PAVEMENT MARKING (WHITE) - LINE 5"
- ⑤ PROP. MODIFIED URETHANE PAVEMENT MARKING (WHITE) - LINE 24"

MODEL: EXCI-10-108_South_Section-261_Sheet1
 FILE NAME: c:\p\work\exc10\card\johnson\illinois\p\07503\Sheets.dgn

USER NAME = Carl.Johnson	DESIGNED -	REVISED -
	DRAWN -	REVISED -
PLOT SCALE = 0.16666833' / in.	CHECKED -	REVISED -
PLOT DATE = 1/29/2024	DATE -	REVISED -

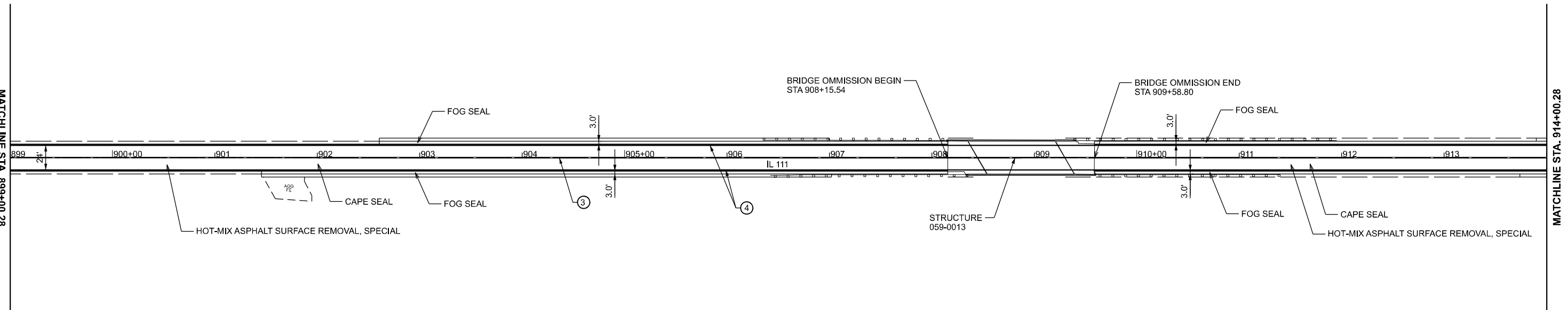
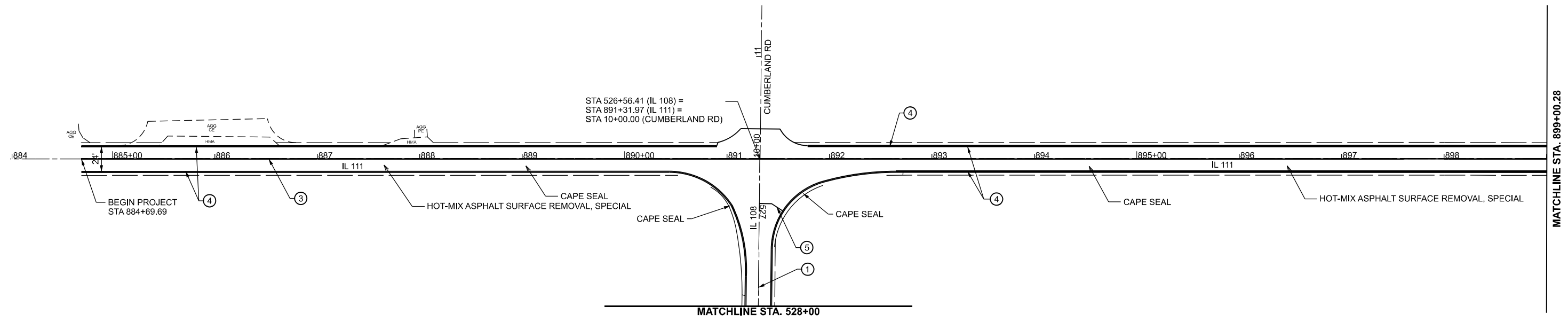
**STATE OF ILLINOIS
DEPARTMENT OF TRANSPORTATION**

**PLAN SHEETS
IL 108**

SCALE: 1"=50' SHEET 14 OF 18 SHEETS STA. 425+22.63 TO STA. 440+22.63

F.A.P. RTE.	SECTION	COUNTY	TOTAL SHEETS	SHEET NO.
*	(107, 108, 109)Q	MACOUPIN	31	27
CONTRACT NO. 72265				
ILLINOIS FED. AID PROJECT				

*608, 761, 765 (IL 108, 111)



- ① PROP. MODIFIED URETHANE PAVEMENT MARKING (YELLOW SKIP-DASH) - LINE 5"
- ② PROP. MODIFIED URETHANE PAVEMENT MARKING (YELLOW) - LINE 5"
- ③ PROP. MODIFIED URETHANE PAVEMENT MARKING (DOUBLE YELLOW) - LINE 5"
- ④ PROP. MODIFIED URETHANE PAVEMENT MARKING (WHITE) - LINE 5"
- ⑤ PROP. MODIFIED URETHANE PAVEMENT MARKING (WHITE) - LINE 24"

MODEL: EXCL9 - 108 South Section-27 (Sheet)
 FILE NAME: c:\p\work\road\card\johnson@illinois.gov\d907503\Sheets.dgn

USER NAME = Carl Johnson	DESIGNED -	REVISED -
DRAWN -	REVISOR -	
PLOT SCALE = 0.16666633' / in.	CHECKED -	REVISOR -
PLOT DATE = 1/29/2024	DATE -	REVISOR -

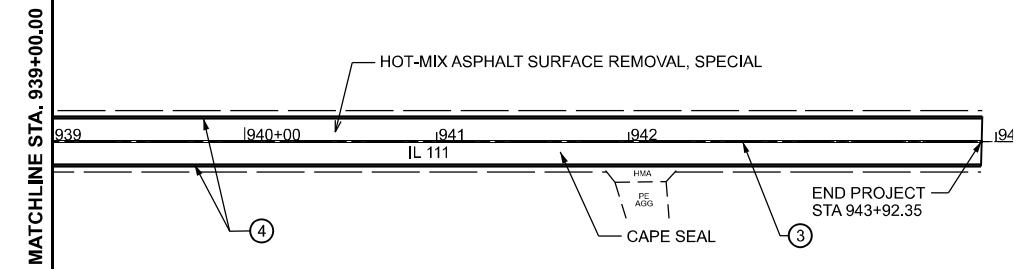
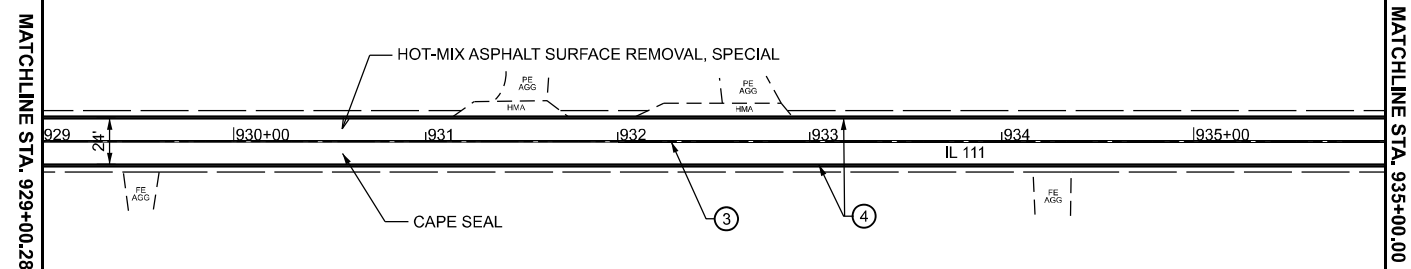
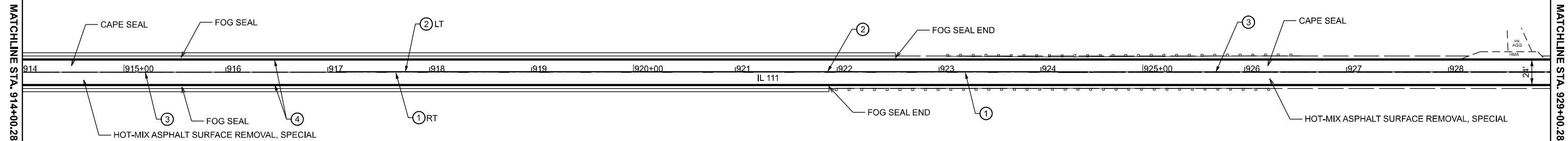
**STATE OF ILLINOIS
DEPARTMENT OF TRANSPORTATION**

**PLAN SHEETS
IL 111**

SCALE: 1"=50' SHEET 15 OF 18 SHEETS STA. 848+31.50 TO STA. 878+31.50

F.A.P. RTE.	SECTION	COUNTY	TOTAL SHEETS	SHEET NO.
*	(107, 108, 109)Q	MACOUPIN	31	28
CONTRACT NO. 72265				
ILLINOIS FED. AID PROJECT				

*608, 761, 765 (IL 108, 111)



- ① PROP. MODIFIED URETHANE PAVEMENT MARKING (YELLOW SKIP-DASH) - LINE 5"
- ② PROP. MODIFIED URETHANE PAVEMENT MARKING (YELLOW) - LINE 5"
- ③ PROP. MODIFIED URETHANE PAVEMENT MARKING (DOUBLE YELLOW) - LINE 5"
- ④ PROP. MODIFIED URETHANE PAVEMENT MARKING (WHITE) - LINE 5"
- ⑤ PROP. MODIFIED URETHANE PAVEMENT MARKING (WHITE) - LINE 24"

MODEL: EXCL 9 - 108 South Section-29 (Sheet)
 FILE NAME: c:\p\work\kwd\card\johnson@illinois.gov\0907503\Sheets.dgn

USER NAME = Carl Johnson	DESIGNED -	REVISED -
DRAWN -	REVISIONS -	
PLOT SCALE = 0.16666633' / in.	CHECKED -	REVISED -
PLOT DATE = 1/24/2024	DATE -	REVISED -

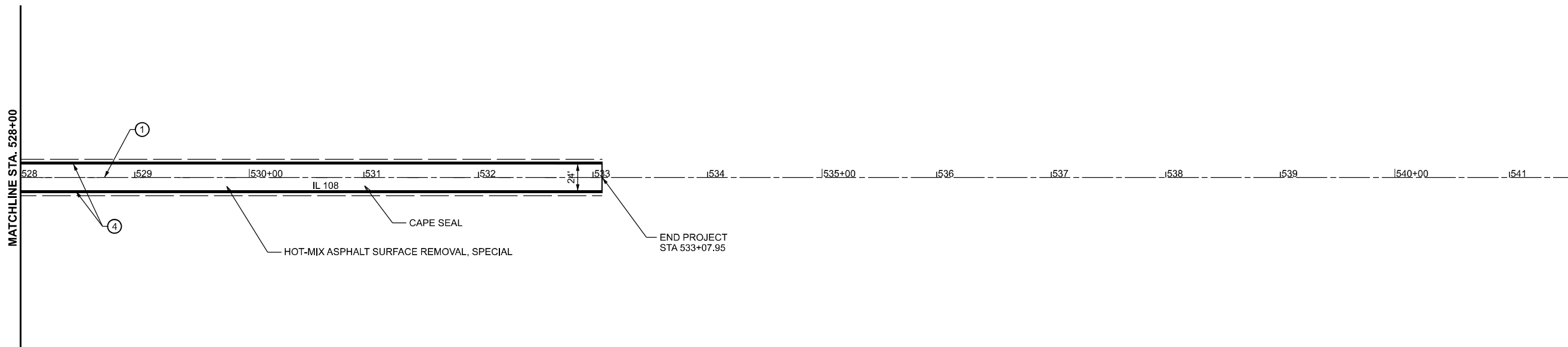
**STATE OF ILLINOIS
DEPARTMENT OF TRANSPORTATION**

**PLAN SHEETS
IL 111**

SCALE: 1"=50' SHEET 16 OF 18 SHEETS STA. 878+31.50 TO STA. 908+31.50

F.A.P. RTE.	SECTION	COUNTY	TOTAL SHEETS	SHEET NO.
*	(107, 108, 109)Q	MACOUPIN	31	29
CONTRACT NO. 72265				
ILLINOIS FED. AID PROJECT				

608, 761, 765 (IL 108, 111)



- ① PROP. MODIFIED URETHANE PAVEMENT MARKING (YELLOW SKIP-DASH) - LINE 5"
- ② PROP. MODIFIED URETHANE PAVEMENT MARKING (YELLOW) - LINE 5"
- ③ PROP. MODIFIED URETHANE PAVEMENT MARKING (DOUBLE YELLOW) - LINE 5"
- ④ PROP. MODIFIED URETHANE PAVEMENT MARKING (WHITE) - LINE 5"
- ⑤ PROP. MODIFIED URETHANE PAVEMENT MARKING (WHITE) - LINE 24"

MODEL: EXCL 7 - 108 South Section-31 (Sheet)
 FILE NAME: c:\p\work\road\carl.johnson@illinois.gov\d07503\Sheets.dgn

USER NAME = Carl.Johnson	DESIGNED -	REVISED -
	DRAWN -	REVISED -
PLOT SCALE = 0.16666633' / in.	CHECKED -	REVISED -
PLOT DATE = 1/25/2024	DATE -	REVISED -

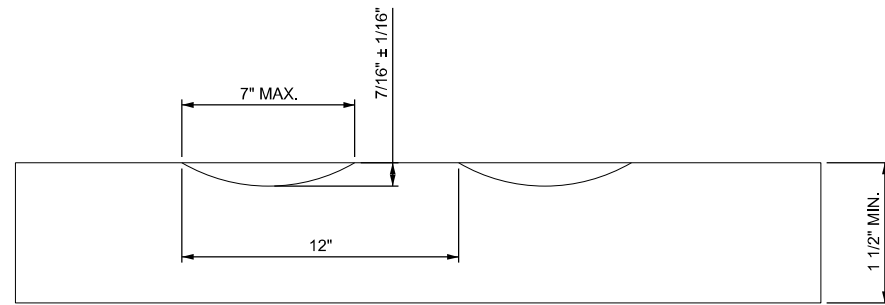
**STATE OF ILLINOIS
DEPARTMENT OF TRANSPORTATION**

**PLAN SHEETS
IL 111**

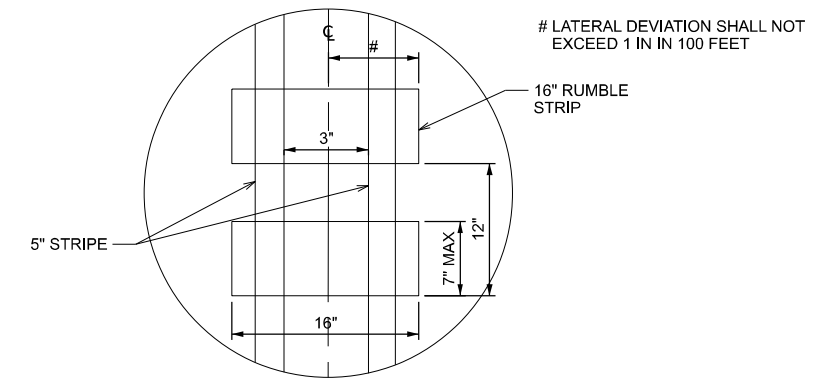
SCALE: 1"=50' SHEET 17 OF 18 SHEETS STA. 0+00.00 TO STA. 15+00.00

F.A.P. RTE.	SECTION	COUNTY	TOTAL SHEETS	SHEET NO.
*	(107, 108, 109)Q	MACOUPIN	31	30
CONTRACT NO. 72265				
ILLINOIS FED. AID PROJECT				

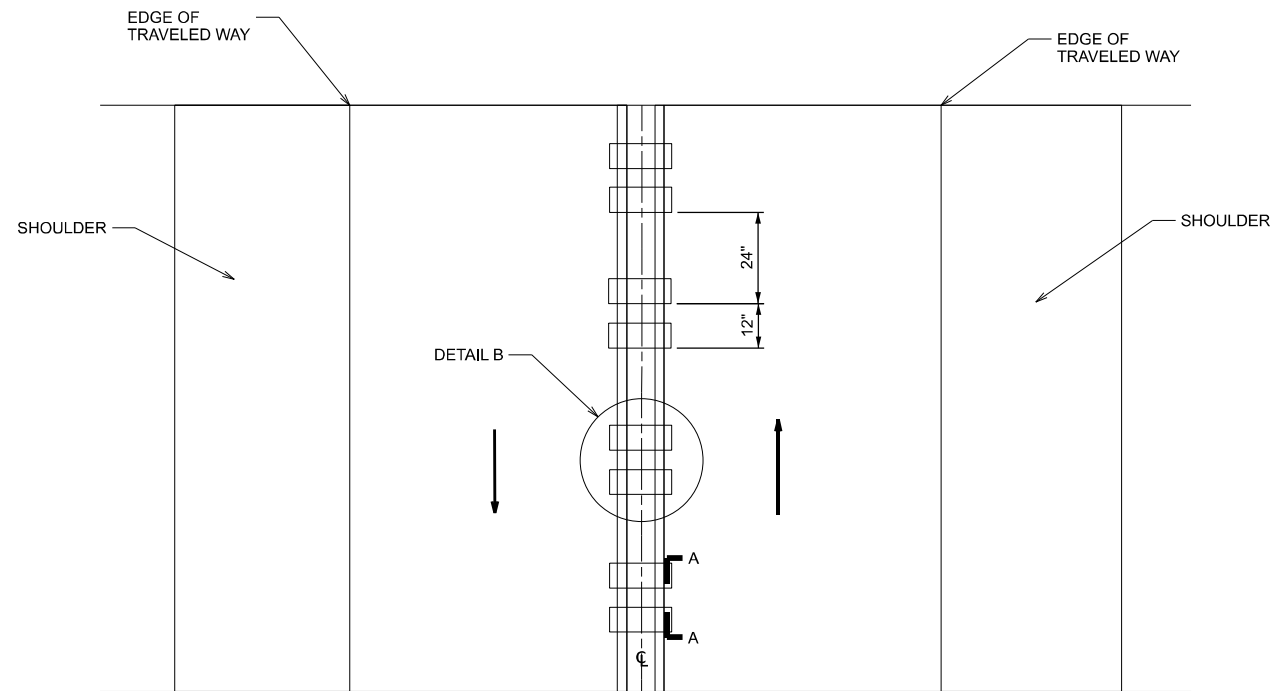
*608, 761, 765 (IL 108, 111)



SECTION A-A



DETAIL B



TWO-WAY ROAD

GENERAL NOTES

1. CENTERLINE RUMBLE STRIPS SHALL BE CONSTRUCTED ACCORDING TO SECTION 642 ALONG THE CENTERLINE OF PAVEMENT.
2. SEE STANDARD 780001 FOR OTHER STRIPING LAYOUTS.
3. RUMBLE STRIPS SHALL NOT BE PLACED ON BRIDGES.
4. ALL RUMBLE STRIPS SHALL BE MILLED.
5. CENTERLINE RUMBLE STRIPS SHALL BE CONTINUOUS THROUGH CONNECTIONS OF SIDEROADS WITH NO LEFT TURN LANES.
6. DISCONTINUE CENTERLINE RUMBLE STRIPS THROUGH THE LIMITS OF ALL LEFT TURN LANES, INCLUDING ANY LANE TAPER SECTIONS.
7. AFTER RUMBLE STRIPS ARE INSTALLED, THE PAVEMENT SURFACE SHALL BE SWEEPED CLEAN PRIOR TO THE PLACEMENT OF THE NEW PAVEMENT MARKINGS.
8. WHERE USED, ADJUST SPACING OF RAISED REFLECTIVE PAVEMENT MARKERS TO FALL IN WIDER GAP BETWEEN RUMBLE STRIPS.

BASIS OF PAYMENT

1. THIS WORK WILL BE PAID FOR AT THE CONTRACT UNIT PRICE PER FOOT FOR CENTERLINE-RUMBLE STRIP OF THE WIDTH SPECIFIED.
2. MODIFIED URETHANE PAVEMENT MARKING WILL BE USED OVER THE RUMBLE STRIPS, AND WILL BE PAID FOR SEPARATELY.

MODEL: Centerline Rumble Strip Detail-1 [Sheet]
FILE NAME: c:\p\work\wtd\carl.johnson@illinois.gov\d0907503\Centerline Rumble Strip Detail.dgn

USER NAME = Carl.Johnson	DESIGNED -	REVISED -
	DRAWN -	REVISED -
PLOT SCALE = 0.16666633' / in.	CHECKED -	REVISED -
PLOT DATE = 1/29/2024	DATE -	REVISED -

**STATE OF ILLINOIS
DEPARTMENT OF TRANSPORTATION**

DETAIL SHEET

SCALE: SHEET OF 18 SHEETS STA. TO STA.

F.A.P. RTE.	SECTION	COUNTY	TOTAL SHEETS	SHEET NO.
*	(107, 108, 109)Q	MACOUPIN	31	31
CONTRACT NO. 72265				