

STATE OF ILLINOIS
DEPARTMENT OF TRANSPORTATION

F.A.U. RTE.	SECTION	COUNTY	TOTAL SHEETS	SHEET NO.
6729	(90-15-1HB)BDR	TAZEWELL	23	1
		ILLINOIS	CONTRACT NO. 68H81	

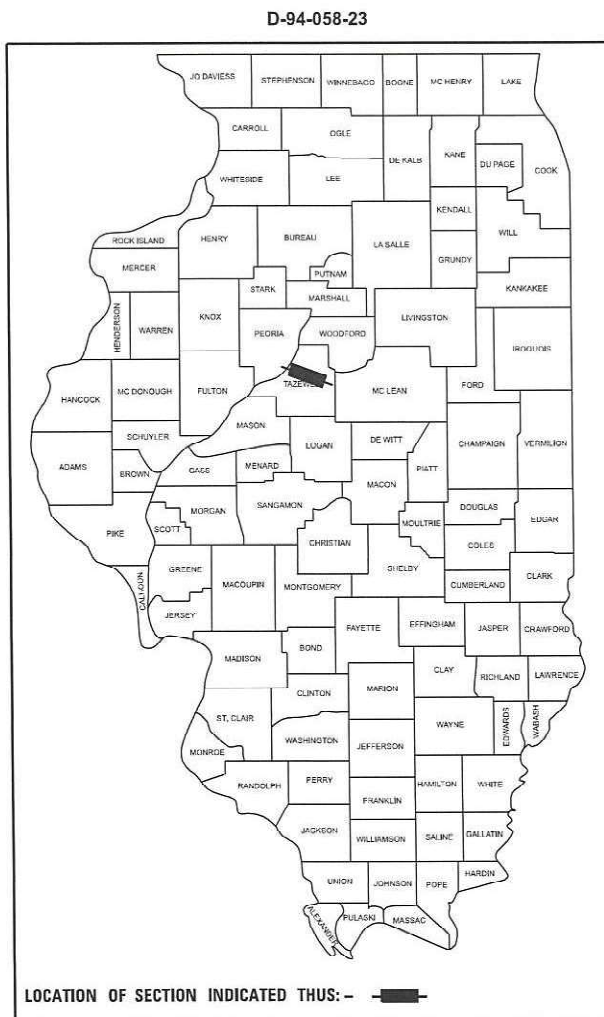
HIGHWAY STANDARDS

- 701101-05 OFF-RD OPERATIONS, MULTILANE, 15' (1.5M) TO 24" (600MM) FROM PAVEMENT EDGE
- 701106-02 OFF-RD OPERATIONS, MULTILANE, MORE THAN 15' (4.5M) AWAY
- 701400-12 APPROACH TO LANE CLOSURE, FREEWAY/EXPRESSWAY
- 701401-13 LANE CLOSURE, FREEWAY/EXPRESSWAY
- 701411-09 LANE CLOSURE, MULTILANE, AT ENTRANCE OR EXIT RAMP, FOR SPEEDS ≥ 45MPH
- 701428-01 TRAFFIC CONTROL SETUP AND REMOVAL FREEWAY/EXPRESSWAY
- 701601-09 URBAN LANE CLOSURE, MULTILANE, 1W OR 2W WITH NONTRAVERSABLE MEDIAN
- 701606-10 URBAN SINGLE LANE CLOSURE, MULTILANE, 2W WITH MOUNTABLE MEDIAN
- 701901-09 TRAFFIC CONTROL DEVICES

FOR INDEX OF SHEETS, SEE SHEET NO. 2

PROPOSED
HIGHWAY PLANS

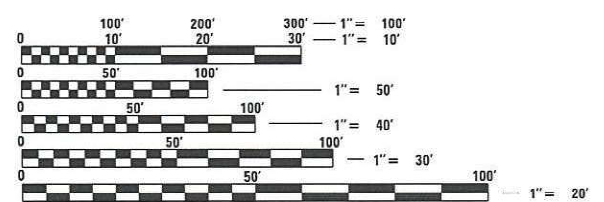
FAI ROUTE 74 (I-74)
SECTION (90-15-1HB)BDR
STATE 0-02178-4022
CONTRACT MAINTENANCE
TAZEWELL COUNTY



DESCRIPTION OF PROJECT:
THIS PROJECT CONSISTS OF PARTIAL DEPTH DECK PATCHING OF THE MORTON AVENUE BRIDGE OVER I-74.



DATE SIGNED : 12/05/2023
LIC. EXP. DATE : 11/30/2025



FULL SIZE PLANS HAVE BEEN PREPARED USING STANDARD ENGINEERING SCALES. REDUCED SIZED PLANS WILL NOT CONFORM TO STANDARD SCALES. IN MAKING MEASUREMENTS ON REDUCED PLANS, THE ABOVE SCALES MAY BE USED.

J.U.L.I.E.
JOINT UTILITY LOCATION INFORMATION FOR EXCAVATION
1-800-892-0123
OR 811

PROJECT ENGINEER: BEN TELLEFSON (309) 671-4477
PROJECT MANAGER: MARK ECKHOFF (309) 671-4463

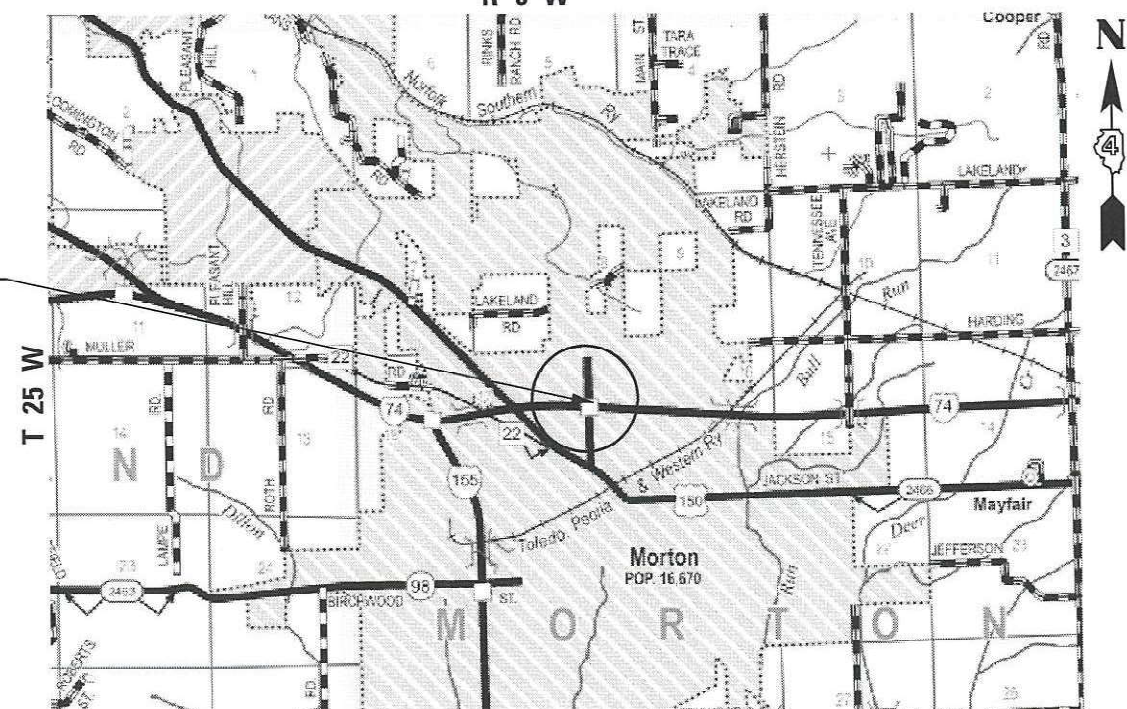
CONTRACT NO. 68H81
CATALOG NO. 036447-00D



C-94-086-23

R 3 W

S.N. 090-0141



GROSS LENGTH = 1000.00 FT. = 0.189 MILE
NET LENGTH = 1000.00 FT. = 0.189 MILE

STATE OF ILLINOIS
DEPARTMENT OF TRANSPORTATION

SUBMITTED January 29, 2024
Ronald A. James REGIONAL ENGINEER

March 22, 2024 [Signature]
ENGINEER OF DESIGN AND ENVIRONMENT

March 22, 2024 [Signature]
DIRECTOR OF HIGHWAYS PROJECT IMPLEMENTATION

PRINTED BY THE AUTHORITY
OF THE STATE OF ILLINOIS

68620

TAZE WELL

FOR REVIEW AND INSPECTION ONLY
09-21-12 LETTING ITEM 01X
FOR INDEX OF SHEETS, SEE SHEET NO. 2
FOR LIST OF STANDARDS, SEE SHEET NOS. 3 & 4

STATE OF ILLINOIS
DEPARTMENT OF TRANSPORTATION
DIVISION OF HIGHWAYS
**PROPOSED
HIGHWAY PLANS**

FAI 74 / FAI 155 INTERCHANGE (I-74/I-55)
SECTION 90-[14R;(14HB-4,14,14HVB)BR]
TAZEWELL COUNTY
PROJECT ACIM-ACBRI-000S(907)
INTERCHANGE RECONSTRUCTION
PLEASANT HILL RD TO MORTON INTERCHANGE TO
NORTH OF BIRCHWOOD RD
C-94-154-06

F.A.U. RTE.	SECTION	COUNTY	TOTAL SHEETS	SHEET NO.
90-[14R;(14HB-4,14,14HVB)BR]	TAZEWELL	ILLINOIS	2433	1

*74 & 155
*2433+107-73=2467
D-94-088-06



PROJECT LOCATED NEAR THE VILLAGE OF MORTON

DESIGN DESIGNATION
FAI 74 (FREEWAY) WITH FAI 155 (FREEWAY)

TRAFFIC DATA

2011 ADT
I-74 = 56,200 (W) VEH / 42,100 (E) VEH
I-155 = 22,000 VEH
RAMPS = 8,900 VEH

2034 ADT
I-74 = 85,500 VEH
I-155 = 34,800 VEH
RAMPS = 15,100 VEH

DESIGN SPEED

I-74 AND I-155 70 MPH

POSTED SPEED LIMIT

I-74 AND I-155 65 MPH

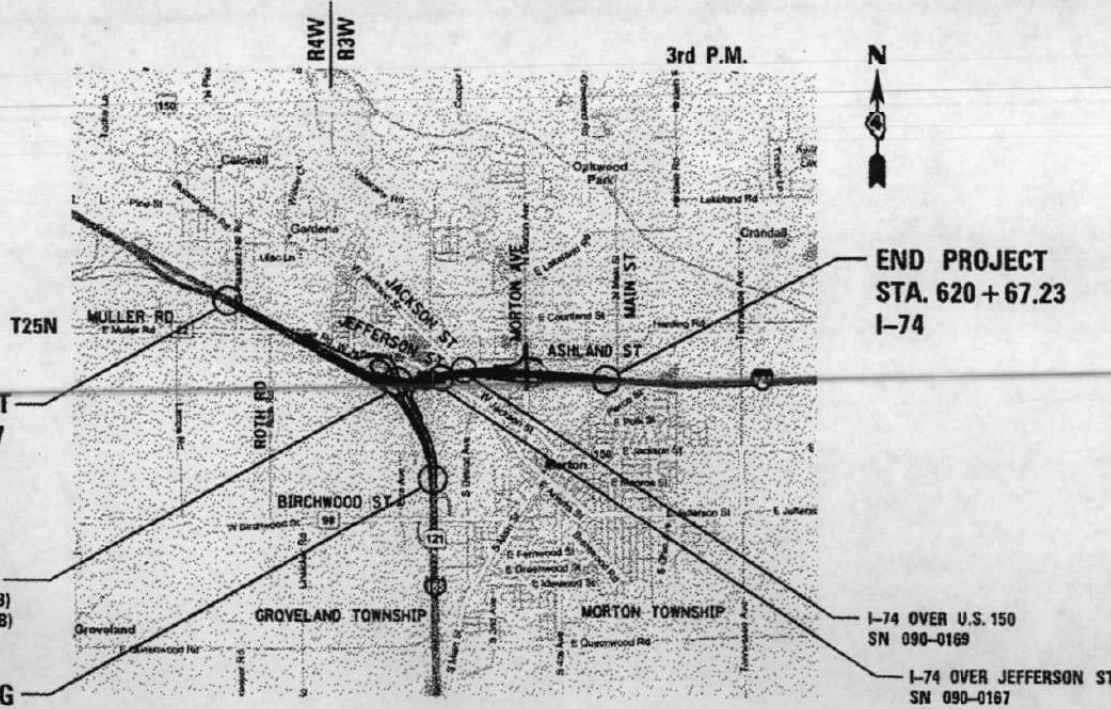


FULL SIZE PLANS HAVE BEEN PREPARED USING STANDARD ENGINEERING SCALES. REDUCED SIZED PLANS WILL NOT CONFORM TO STANDARD SCALES. IN MAKING MEASUREMENTS ON REDUCED PLANS, THE ABOVE SCALES MAY BE USED.

J.U.L.I.E.
JOINT UTILITY LOCATION INFORMATION FOR EXCAVATION
1-800-892-0123
OR 811

PROJECT MANAGER: CHRISTOPHER MAUSHARD (309) 671-3453
PROJECT LIAISON ENGINEER: MIKE MOHAMED (309) 671-3462
CONTRACT NO. 68620
CATALOG NO. 033344-01D

090-0141



GROSS LENGTH = 15,513.00 FT. = 2.94 MILE
NET LENGTH = 15,513.00 FT. = 2.94 MILE

STATE OF ILLINOIS
DEPARTMENT OF TRANSPORTATION
DIVISION OF HIGHWAYS

SUBMITTED July 27, 2012

John D. Brammelli, P.E.
acting DEPUTY DIRECTOR OF HIGHWAYS, REGION ENGINEER

August 17, 2012

William R. Franke
acting DIRECTOR OF HIGHWAYS, CHIEF ENGINEER

PRINTED BY THE AUTHORITY OF THE STATE OF ILLINOIS

benesch
engineers · scientists · planners
Alfred Benesch & Company
205 North Michigan Avenue, Suite 2400
Chicago, Illinois 60601
312-565-0450 Job No. 10056

FOR INFORMATION ONLY

MODEL: D:\infra\... FILE NAME: ...



USER NAME = bremnas	DESIGNED - BKR	REVISED -
PLOT SCALE = 2,000' / 1 in.	DRAWN - BKR	REVISED -
PLOT DATE = 11/17/2024	CHECKED - CEM	REVISED -
	DATE - 11/01/2023	REVISED -

STATE OF ILLINOIS
DEPARTMENT OF TRANSPORTATION

EXISTING PLANS (FOR INFORMATION ONLY)	
MORTON AVE OVER I-74	
SCALE: 1"=20'	SHEET 1 OF 13 SHEETS STA. TO STA.

F.A.U. RTE.	SECTION	COUNTY	TOTAL SHEETS	SHEET NO.
6729	(90-15-1HB)BDR	TAZEWELL	23	11
CONTRACT NO. 68H81				
ILLINOIS FED. AID PROJECT				

GENERAL NOTES:

- Fasteners shall be ASTM A325 Type 1, mechanically galvanized bolts. Bolts $\frac{3}{4}$ " ϕ , holes $\frac{5}{16}$ " ϕ , unless otherwise noted.
- No field welding is permitted except as specified in the contract documents.
- Reinforcement bars designated (E) shall be epoxy coated.
- The Inorganic Zinc Rich Primer / Acrylic / Acrylic Paint System shall be used for shop and field painting of new structural steel except where otherwise noted. The color of the final finish coat for all interior steel surfaces shall be blue, Munsell No. 10B 3/5.

5. The Contractor shall exercise care during removal of existing joints to ensure that the slab, beams and diaphragms' integrity will not be detrimentally impacted. The Contractor shall repair any damage(s) to the slab, beams and diaphragms caused by his operation as directed by the Engineer at no additional cost to the Department.

6. Prior to pouring the new concrete deck, all heavy or loose rust, loose mill scale, and other loose or potentially detrimental foreign material shall be removed from the surfaces in contact with concrete. Tightly adhered paint may remain unless otherwise noted. Removal shall be accomplished by methods that will not damage the steel and the cost will be included in the pay item covering removal of the existing concrete.

As directed by the Engineer, existing construction accessories welded to the top flange of beams and girders shall be removed. The weld areas shall be ground flush and inspected for cracks using magnetic particle testing (MT) or dye penetrant testing (PT) by qualified personnel approved by the Engineer. Any cracks that can not be removed by grinding $\frac{1}{4}$ in. deep shall be identified and reported to the Bureau of Bridges and Structures for further disposition. The cost of removing welded accessories, grinding and inspecting weld areas and grinding cracks will be paid for according to Article 109.04 of the Standard Specifications.

7. Plan dimensions and details relative to existing plans are subject to nominal construction variations. The contractor shall field verify existing dimensions and details affecting new construction and make necessary approved adjustments prior to construction or ordering of materials. Such variations shall not be cause for additional compensation for a change in scope of the work, however, the Contractor will be paid for the quantity actually furnished at the unit price bid for the work.

8. Strip Seal Expansion Joint shall be hot dipped galvanized.

9. No temporary joint seal is required if work is completed prior to winter shutdown. If work is not completed then joint opening should be temporarily sealed at no additional cost to the Department.

10. For proposed underdeck lighting, see Lighting Plans.

11. For coordination of the bridge removal and construction stages specified herein with the overall project staging, see the Project Staging Coordination Table on this sheet.

12. The existing structural steel coating contains lead. The Contractor shall take appropriate precautions to deal with the presence of lead on this project.

13. Existing structural steel in contact with new structural steel shall be cleaned and painted prior to erection as required by the Special Provision, "Cleaning and Painting Contact Surface Areas of Existing Steel Structures."

14. Diaphragm connection holes shall be $\frac{5}{16}$ " ϕ for $\frac{3}{4}$ " ϕ H.S. bolts. Two hardened washers are required for each set of oversized holes.

15. Joint openings shall be adjusted according to Article 520.04 of the Standard Specifications when the blockout is cast at an ambient temperature other than 50°F.

INDEX OF SHEETS

- SD1 General Plan and Elevation
- SD2 General Data
- SD3 Stage Construction Details 1 of 2
- SD4 Stage Construction Details 2 of 2
- SD5 Removal Details
- SD6 Deck Reinforcement Plan 1 of 2
- SD7 Deck Reinforcement Plan 2 of 2
- SD8 Expansion Joint Details 1 of 3
- SD9 Expansion Joint Details 2 of 3
- SD10 Expansion Joint Details 3 of 3
- SD11 Partial Framing Plan and Details 1 of 2
- SD12 Partial Framing Plan and Details 2 of 2
- SD13 Performed Joint Strip Seal
- SD14 Bar Splicer Assembly Details
- SD15 Existing Plans
- SD16 Existing Plans
- SD17 Existing Plans
- SD18 Existing Plans
- SD19 Existing Plans
- SD20 Existing Plans
- SD21 Existing Plans
- SD22 Existing Plans
- SD23 Existing Plans
- SD24 Existing Plans
- SD25 Existing Plans
- SD26 Existing Plans
- SD27 Existing Plans
- SD28 Existing Plans
- SD29 Existing Plans

TOTAL BILL OF MATERIAL

ITEM	UNIT	TOTAL
Concrete Removal	Cu. Yd.	149.7
Protective Shield	Sq. Yd.	358
Concrete Superstructure	Cu. Yd.	87.1
Bridge Deck Grooving	Sq. Yd.	508
Protective Coat	Sq. Yd.	978
Furnishing and Erecting Structural Steel	Pound	4,010
Reinforcement Bars, Epoxy Coated	Pound	16,440
Bar Splicers	Each	40
Performed Joint Strip Seal	Foot	209.5

PROJECT STAGING COORDINATION TABLE

Bridge Removal or Construction Stage	Overall Project Stage
Stage I	Pre-Stage
Stage II	Stage 1
Stage III	Stage 4
Stage IV	Stage 14

FOR INFORMATION ONLY



Alfred Benesch & Company
205 North Michigan Avenue, Suite 2400
Chicago, Illinois 60601
312-565-0450 Job No. 10056

FILE NAME =	USER NAME = mbacker	DESIGNED - JDC	REVISED -
0902141.68620_02.grd Lodgn		CHECKED - MRB/AAV	REVISED -
	PLOT SCALE =	DRAWN - PRT	REVISED -
	PLOT DATE = 7/16/2012	CHECKED - MRB/AAV	REVISED -

STATE OF ILLINOIS
DEPARTMENT OF TRANSPORTATION

GENERAL DATA
STRUCTURE NO. 690-0141

SHEET NO. SD2 OF SD29 SHEETS

F.A.U. RTE.	SECTION	COUNTY	TOTAL SHEETS	SHEET NO.
74	90-114R(14)HB-4,14,14HV(B)BR	TAZEWELL	2433	2041
			CONTRACT NO. 68620	
ILLINOIS FED. AID PROJECT				

MODEL: D:\bentech\... FILE NAME: ...

X:\100005\10056\Engineer\ng.Documents_Phase_1\MortonOverI74V.ina\0900141.68620_02.grd.dgn 7/16/2012 7:36:13 AM



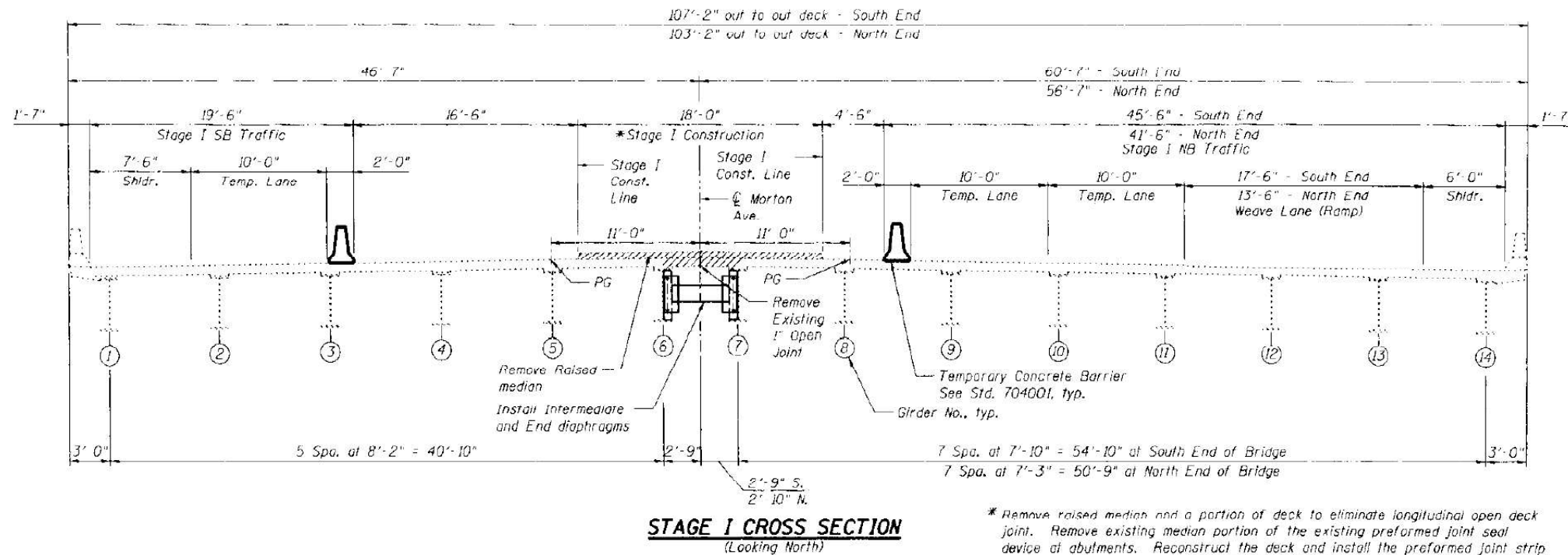
USER NAME = brennas	DESIGNED - BKR	REVISED -
	DRAWN - BKR	REVISED -
PLOT SCALE = 2,000' / in.	CHECKED - CEM	REVISED -
PLOT DATE = 11/17/2024	DATE = 11/01/2023	REVISED -

STATE OF ILLINOIS
DEPARTMENT OF TRANSPORTATION

EXISTING PLANS (FOR INFORMATION ONLY)
MORTON AVE OVER I-74

SCALE: 1"=20' SHEET 3 OF 13 SHEETS STA. TO STA.

F.A.U. RTE.	SECTION	COUNTY	TOTAL SHEETS	SHEET NO.
6729	(90-15-1HB)BDR	TAZEWELL	23	13
			CONTRACT NO. 68H81	
ILLINOIS FED. AID PROJECT				

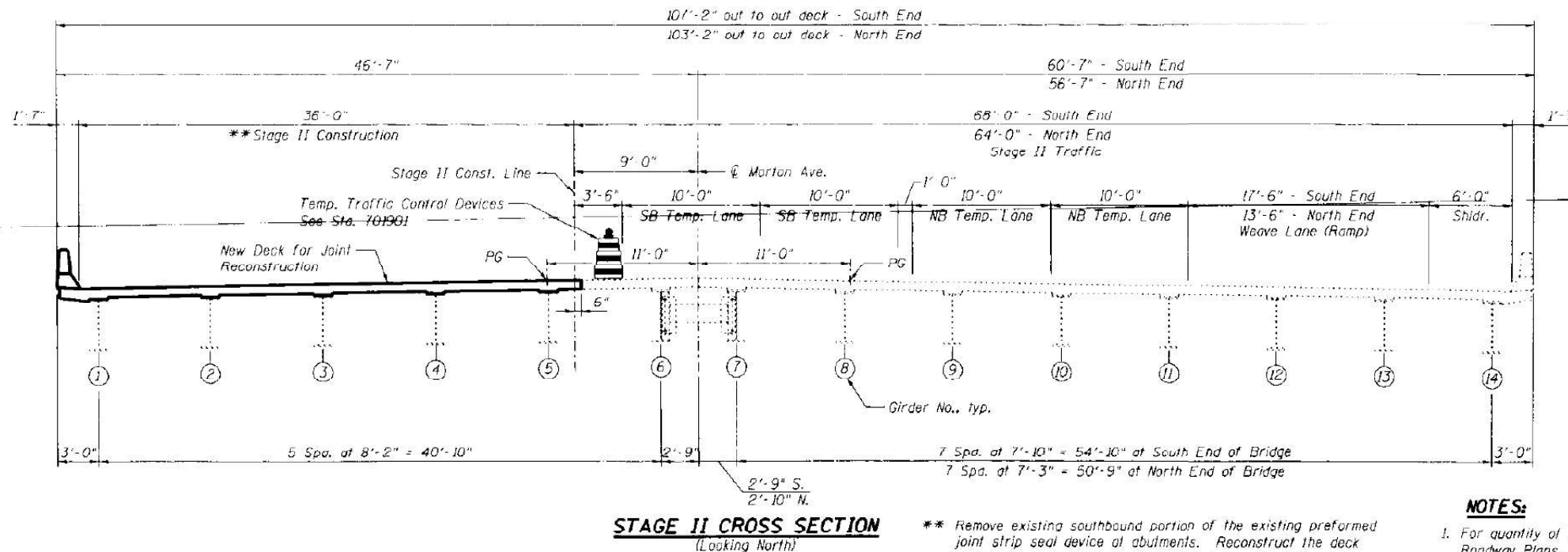


STAGE I CROSS SECTION
(Looking North)

* Remove raised median and a portion of deck to eliminate longitudinal open deck joint. Remove existing median portion of the existing preformed joint seal device at abutments. Reconstruct the deck and install the preformed joint strip rails without the strip seal and provide a deck surface flush with the existing deck on each side and along the median portion of the deck. Reconstructed length is 6" less than Stage I Construction limit shown (see Sheet SDB for details). Install intermediate and end diaphragms between girders 6 & 7.

LEGEND

Removal area



STAGE II CROSS SECTION
(Looking North)

** Remove existing southbound portion of the existing preformed joint strip seal device at abutments. Reconstruct the deck and install the preformed joint strip rails without the strip seal. Reconstructed length extends 6" beyond the Stage II Const. Line (see Sheet SDB for details).

NOTES:

1. For quantity of Temporary Concrete Barrier, see Roadway Plans.
2. Temporary Concrete Barrier shall not be anchored into existing deck.
3. See Roadway Plans for detailed maintenance of traffic plans.

FOR INFORMATION ONLY

benesch
engineers scientists planners
Alfred Benesch & Company
205 North Michigan Avenue, Suite 2400
Chicago, Illinois 60601
312.666.0450 Job No. 10066

FILE NAME = 0908141.66820_03.stg1.dgn	USER NAME = etwacke	DESIGNED - JDC	REVISED -
		CHECKED - WRB/AY	REVISED -
		DRAWN - PRT	REVISED -
		CHECKED - WRB/AY	REVISED -
	PLOT SCALE =		
	PLOT DATE = 7/16/2012		

STATE OF ILLINOIS
DEPARTMENT OF TRANSPORTATION

STATE CONSTRUCTION DETAILS 1 OF 2
STRUCTURE NO. 090-0141

SHEET NO. 503 OF 5029 SHEETS

F.A.U. RTE.	SECTION	COUNTY	TOTAL SHEETS	SHEET NO.
74	90-114R(14B-4,14,14HVB)BR	TAZEWELL	2433	2042
CONTRACT NO. 68620			ILLINOIS FED. AID PROJECT	

TERRA
ENGINEERING LTD.

USER NAME = brennas	DESIGNED - BKR	REVISED -
	DRAWN - BKR	REVISED -
	CHECKED - CEM	REVISED -
	DATE - 11/01/2023	REVISED -
PLOT SCALE = 2,000' / in.		
PLOT DATE = 1/17/2024		

STATE OF ILLINOIS
DEPARTMENT OF TRANSPORTATION

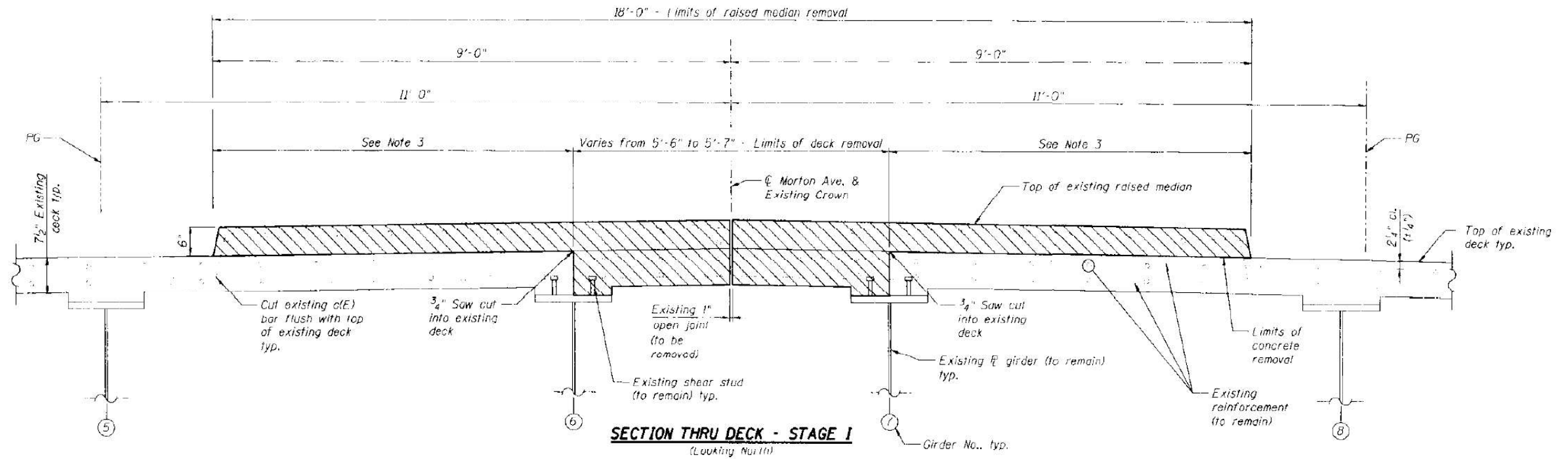
EXISTING PLANS (FOR INFORMATION ONLY)
MORTON AVE OVER I-74

SCALE: 1"=20' SHEET 4 OF 13 SHEETS STA. TO STA.

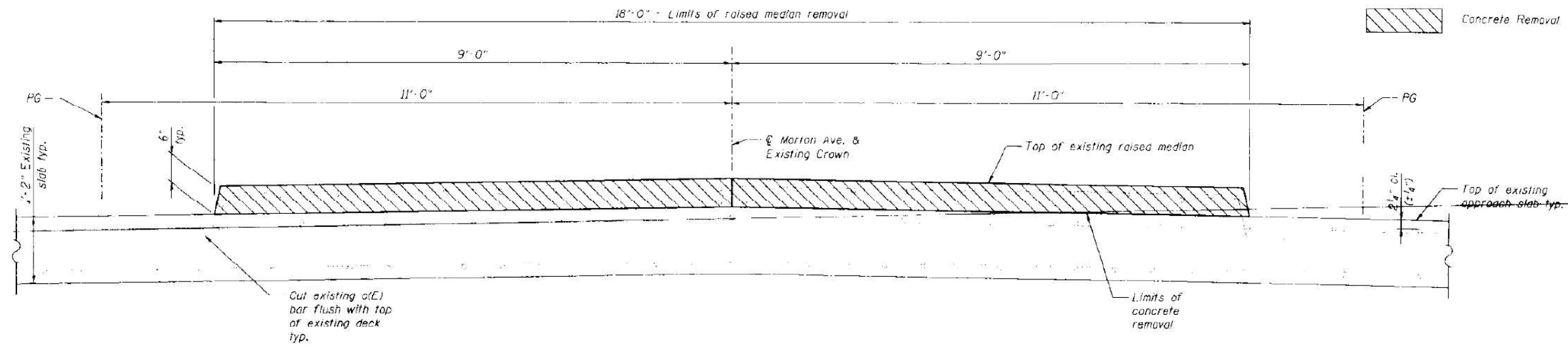
F.A.U. RTE.	SECTION	COUNTY	TOTAL SHEETS	SHEET NO.
6729	(90-15-1HB)BDR	TAZEWELL	23	14
CONTRACT NO. 68H81			ILLINOIS FED. AID PROJECT	

MODEL: D:\InRoads\Projects\10056\Engineering\Documents\Phase 1\MortonOverI74\Final\0908141.68620_03.stg1.dgn

X:\10056\Engineering\Documents\Phase 1\MortonOverI74\Final\0908141.68620_03.stg1.dgn 7/16/2012 7:36:14 AM



SECTION THRU DECK - STAGE I
(Looking North)



SECTION THRU VAULTED SPAN - STAGE I
(Looking North)

NOTES:

1. See General Plan and Elevation for removal limits of existing raised median.
2. Existing shear studs shall be cleaned and left intact. Cost included with Concrete Removal.
3. The final 1/4" of existing concrete shall be removed using equipment capable of producing a bridge deck elevation consistent with the profile of the existing deck. Any peeks, spalls, or gouges greater than 1/4" shall be removed or repaired prior to bridge deck grooving. Cost included with Concrete Removal.

FOR INFORMATION ONLY



FILE NAME : 0900141.68620.05_r.enl.dgn	USER NAME : wbacker	DESIGNED - JDC	REVISED -
		CHECKED - MRB/AAV	REVISED -
		DRAWN - PRT	REVISED -
		CHECKED - MRB/AAV	REVISED -

STATE OF ILLINOIS
DEPARTMENT OF TRANSPORTATION

REMOVAL DETAILS
STRUCTURE NO. 090-0141
SHEET NO. 505 OF 529 SHEETS

F.A.U. RTE.	SECTION	COUNTY	TOTAL SHEETS	SHEET NO.
74	90-114R(14NB-4,14,14HVBDR)	TAZEWELL	2433	2044
ILLINOIS FED. AID PROJECT			CONTRACT NO. 68620	



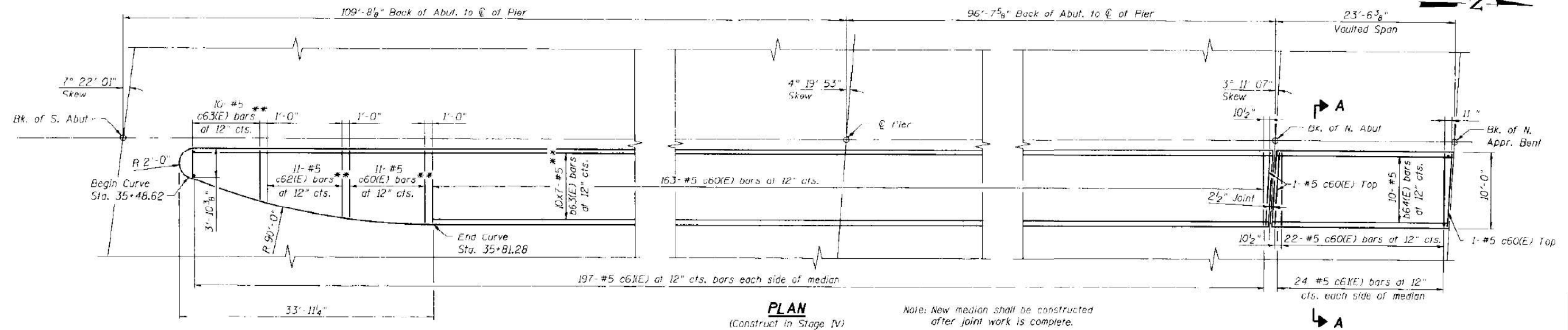
USER NAME : bremas	DESIGNED - BKR	REVISED -
	DRAWN - BKR	REVISED -
	CHECKED - CEM	REVISED -
	DATE - 11/01/2023	REVISED -

STATE OF ILLINOIS
DEPARTMENT OF TRANSPORTATION

EXISTING PLANS (FOR INFORMATION ONLY)
MORTON AVE OVER I-74
SCALE: 1"=20' SHEET 6 OF 13 SHEETS STA. TO STA.

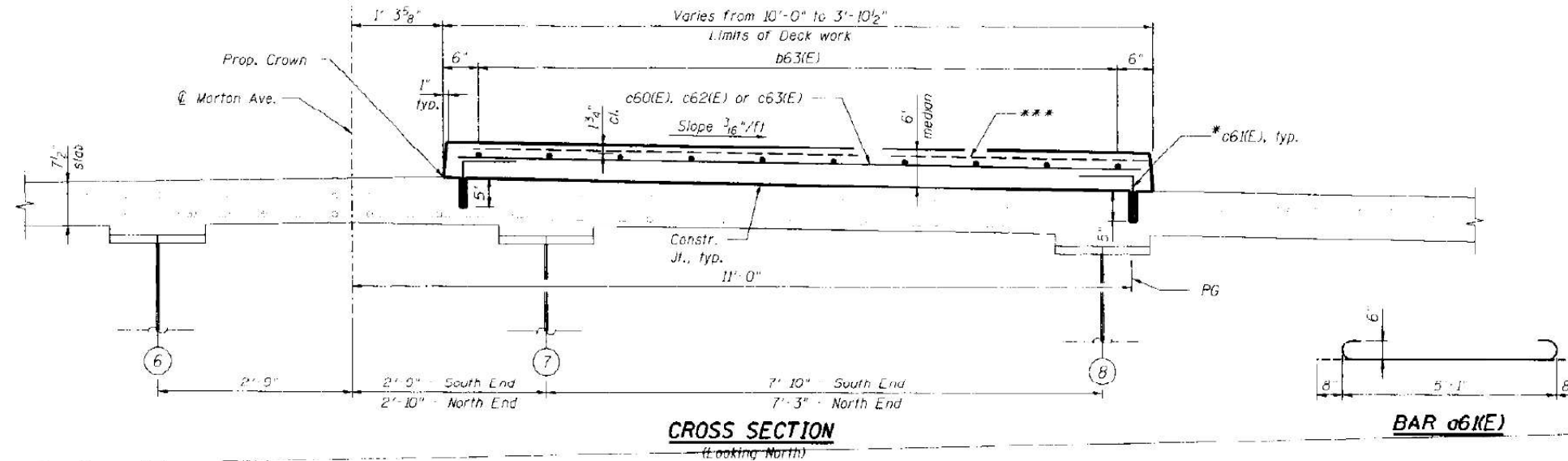
F.A.U. RTE.	SECTION	COUNTY	TOTAL SHEETS	SHEET NO.
6729	(90-15-1HB)BDR	TAZEWELL	23	16
ILLINOIS FED. AID PROJECT			CONTRACT NO. 68H81	

MODEL: D:\data\...
 FILE NAME: ...
 X:\100005\10056\Engineer\mg_Documents_Phase_1\10000141_68620_05_r.enl.dgn
 7/16/2012 7:35:16 AM



PLAN
(Construct in Stage IV)

Note: New median shall be constructed after joint work is complete.



CROSS SECTION
(Looking North)

BAR c6(E)

BAR c6(E)

MINIMUM BAR LAP
(Deck)

#5 bar = 3'-3"
#6 bar = 3'-10"

**STAGE I THRU IV
BILL OF MATERIAL**

Bar	No.	Size	Length	Shape
c60(E)	226	#5	5'-2"	—
c61(E)	157	#6	6'-5"	—
b60(E)	42	#6	32'-10"	—
b61(E)	12	#6	24'-3"	—
b62(E)	48	#6	29'-3"	—
b63(E)	70	#5	31'-3"	—
b64(E)	10	#5	23'-2"	—
c60(E)	199	#5	9'-6"	—
c61(E)	442	#5	1'-5"	—
c62(E)	11	#5	8'-8"	—
c63(E)	10	#5	6'-6"	—
Concrete Removal		Cu. Yd.	130.9	
Concrete Superstructure		Cu. Yd.	70.2	
Reinforcement Bars, Epoxy Coated		Pound	13,200	

* Drill and grout #5 c6(E) bars according to Article 584 of the Standard Specifications. Maximum depth of hole shall not exceed 6". Cost to be included in Reinforcement Bars, Epoxy Coated.

** Order b63(E), c60(E), c62(E), and c63(E) bars full length. Cut to fit curve of median.

*** 1/4" x 3/4" Formed joints with bridge relief joint sealer at pier and two contraflexure points (match existing parapet locations).

NOTES:

1. Bars indicated thus 10x7-#5 etc. indicates 10 lines of bars with 7 lengths per line.
2. Raised median shall be constructed at Stage IV.

benesch
engineers · scientists · planners
Alfred Benesch & Company
205 North Michigan Avenue, Suite 2400
Chicago, Illinois 60601
312-685-0450 Job No. 10068

FILE NAME = 9908141.68628.07.dwg	USER NAME = nbecker	DESIGNED - JDC	REVISED -
PLOT SCALE = 2,000 / 1 in.	CHECKED - MRB / AAY	DRAWN - PRT	REVISED -
PLOT DATE = 7/16/2012	CHECKED - MRB / AAY	REVISIONS	

FOR INFORMATION ONLY

**STATE OF ILLINOIS
DEPARTMENT OF TRANSPORTATION**

**DECK REINFORCEMENT PLAN 2 OF 2
STRUCTURE NO. 090-0141**

SHEET NO. 507 OF 529 SHEETS

F.A.U. RTE.	SECTION	COUNTY	TOTAL SHEETS	SHEET NO.
74	90-E14R114MB-4,14,14HVBIBR	TAZEWELL	2433	2046
CONTRACT NO. 68620			ILLINOIS FED. AID PROJECT	

TERRA
ENGINEERING LTD.

USER NAME = brenmas	DESIGNED - BKR	REVISED -
PLOT SCALE = 2,000 / 1 in.	DRAWN - BKR	REVISED -
PLOT DATE = 11/17/2024	CHECKED - CEM	REVISED -
DATE = 11/01/2023	REVISIONS	

**STATE OF ILLINOIS
DEPARTMENT OF TRANSPORTATION**

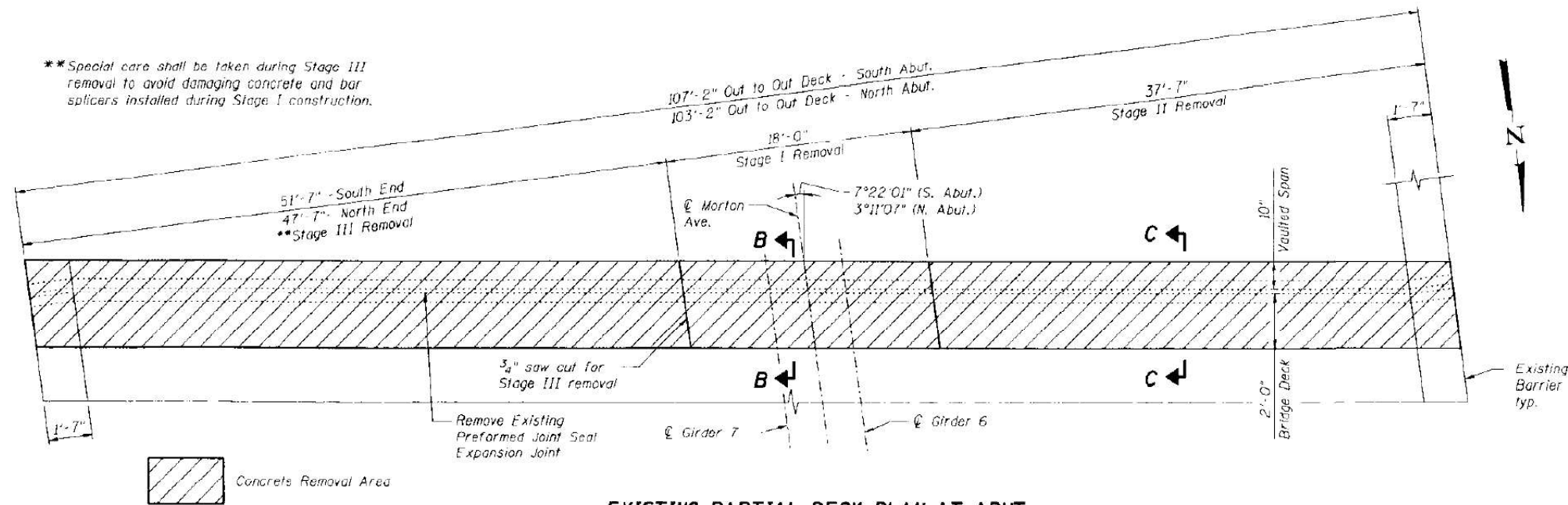
**EXISTING PLANS (FOR INFORMATION ONLY)
MORTON AVE OVER I-74**

SCALE: 1"=20' SHEET 8 OF 13 SHEETS STA. TO STA.

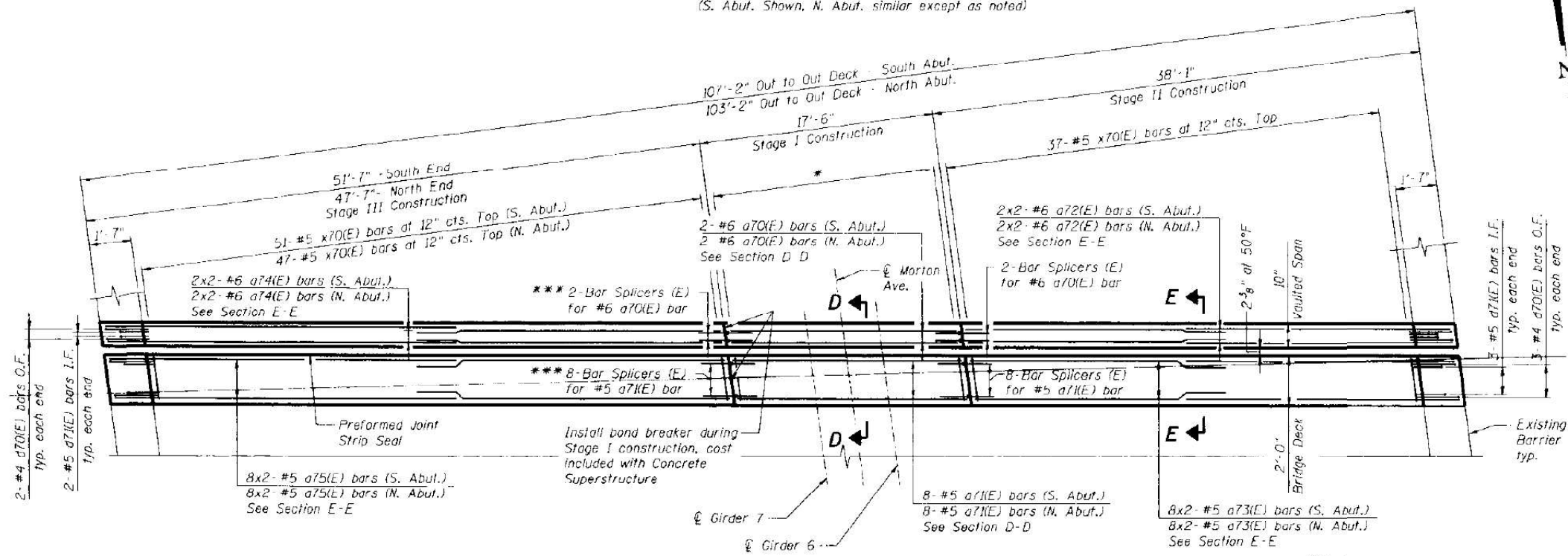
F.A.U. RTE.	SECTION	COUNTY	TOTAL SHEETS	SHEET NO.
6729	(90-15-1HB)BDR	TAZEWELL	23	18
CONTRACT NO. 68H81			ILLINOIS FED. AID PROJECT	

MODEL Path: \\hennepinpc01\benesch\p0041\Documents\Project\2022\22-28 IDOT DA Work Center\22-09-201 DA Three Structures\CAD\Draw Sheets\09-04-14 Morton Ave over I-74\2212001-1-SHT-REV-08.dwg
 FILE NAME: \\hennepinpc01\benesch\p0041\Documents\Project\2022\22-28 IDOT DA Work Center\22-09-201 DA Three Structures\CAD\Draw Sheets\09-04-14 Morton Ave over I-74\2212001-1-SHT-REV-08.dwg
 X:\100005\10056\Engineering\ng\Documents_Phase_11\Morton Ave Over I-74\Final\0900141_68620_07.dwg
 7/16/2012 7:36:18 AM

**Special care shall be taken during Stage III removal to avoid damaging concrete and bar splicers installed during Stage I construction.



EXISTING PARTIAL DECK PLAN AT ABUT.
(S. Abut. Shown, N. Abut. similar except as noted)



PROPOSED PARTIAL DECK PLAN AT ABUT.
(S. Abut. Shown, N. Abut. similar except as noted)

*19-#5 x70(E) bars at 12" cts. Top
*** Threaded couplers shall be plugged during Stage I to prevent concrete infiltration. Cost included with Bar Splicers.

MINIMUM BAR LAP

#5 bar = 3'-3"
#6 bar = 3'-10"

BILL OF MATERIAL

Bar	No.	Size	Length	Shape	
a70(E)	4	#6	17'-2"		
a71(E)	16	#5	17'-2"		
a72(E)	8	#6	21'-0"		
a73(E)	32	#5	20'-9"		
a74(E)	8	#6	27'-10"		
a75(E)	32	#5	27'-6"		
d70(E)	20	#4	5'-3"		
d71(E)	20	#5	3'-11"		
x70(E)	210	#5	2'-3"		
Concrete Removal				Cu. Yd.	18.8
Concrete Superstructure				Cu. Yd.	16.9
Reinforcement Bars, Epoxy Coated				Pound	3,240

FOR INFORMATION ONLY



Alfred Benesch & Company
205 North Michigan Avenue, Suite 2400
Chicago, Illinois 60601
312-685-0450 Job No. 10056

FILE NAME =	USER NAME = mbaucher	DESIGNED - JDC	REVISED -
0908141_68620_06.ex.jtd.dgn		CHECKED - MRB/AAV	REVISED -
	PLOT SCALE =	DRAWN - JDC	REVISED -
	PLOT DATE = 7/16/2012	CHECKED - MRB/AAV	REVISED -

STATE OF ILLINOIS
DEPARTMENT OF TRANSPORTATION

EXPANSION JOINT DETAILS 1 OF 3
STRUCTURE NO. 090-0141
SHEET NO. 508 OF 5029 SHEETS

F.A.U. RTE.	SECTION	COUNTY	TOTAL SHEETS	SHEET NO.
74	90-114R/14HB-4.14,14HB/1BR	TAZEWELL	2433	2047
CONTRACT NO. 68620			ILLINOIS FED. AID PROJECT	



USER NAME = brennas	DESIGNED - BKR	REVISED -
	DRAWN - BKR	REVISED -
PLOT SCALE = 2,000 / 1in.	CHECKED - CEM	REVISED -
PLOT DATE = 11/7/2024	DATE = 11/01/2023	REVISED -

STATE OF ILLINOIS
DEPARTMENT OF TRANSPORTATION

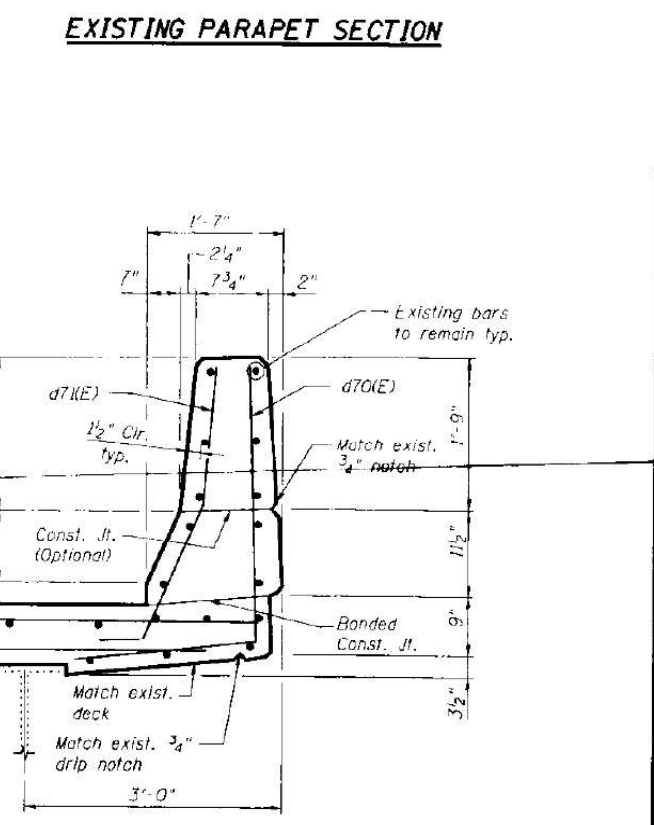
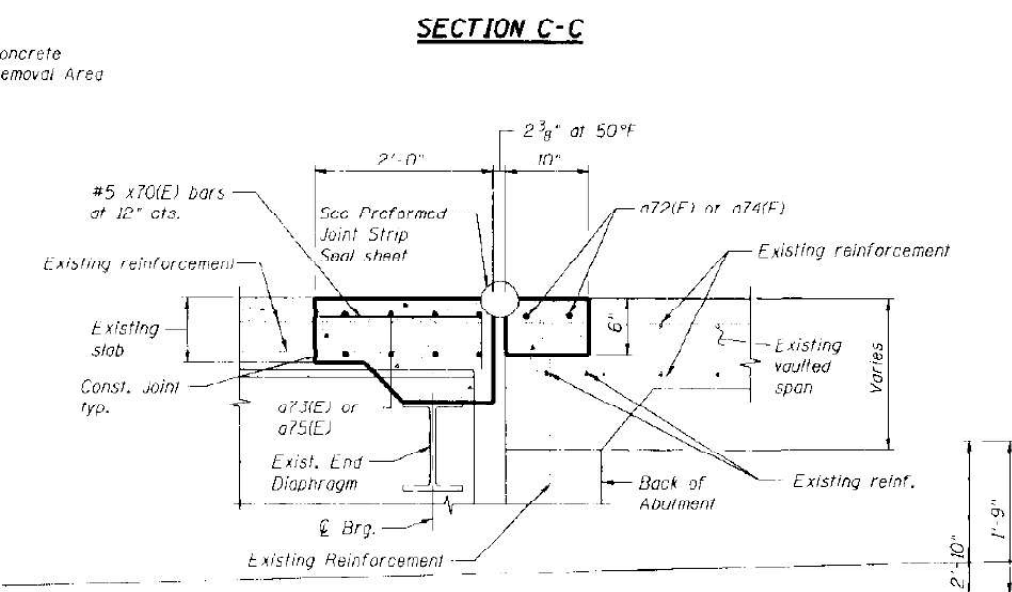
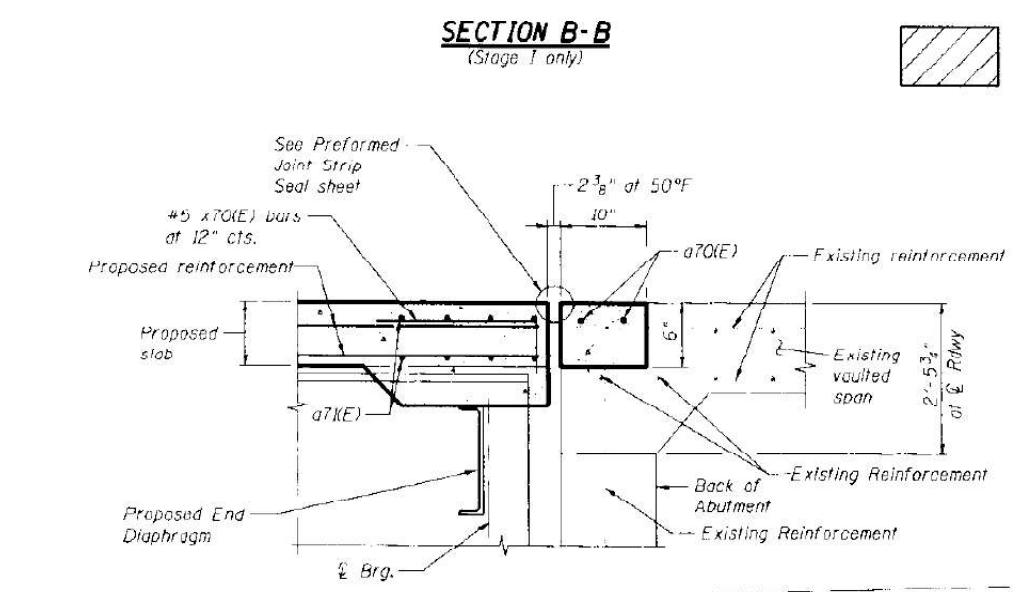
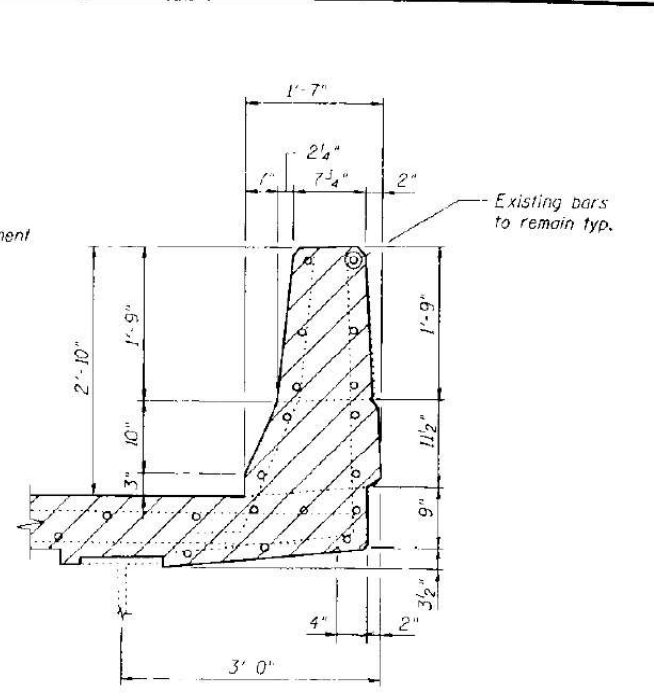
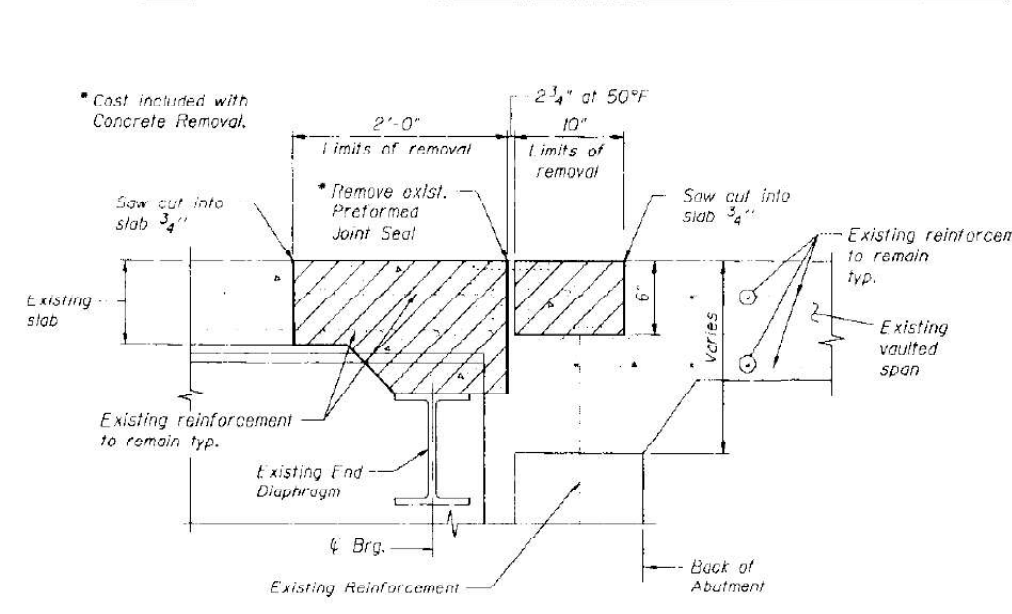
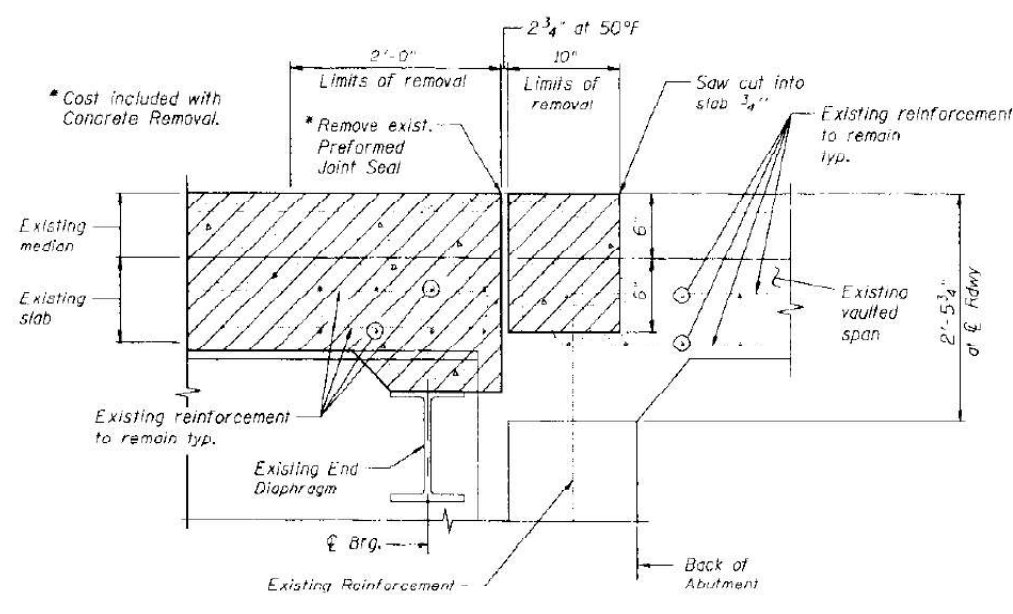
EXISTING PLANS (FOR INFORMATION ONLY)
MORTON AVE OVER I-74

SCALE: 1"=20' SHEET 9 OF 13 SHEETS STA. TO STA.

F.A.U. RTE.	SECTION	COUNTY	TOTAL SHEETS	SHEET NO.
6729	(90-15-1HB)BDR	TAZEWELL	23	19
CONTRACT NO. 68H81			ILLINOIS FED. AID PROJECT	

MODEL Path: \\server\p01\benesch\005411\Documents\Projects\2022\22-23\DOT DA Work Center\22-23\DOT DA Work Center\CADD\Draw Sheets\050411-Morton Ave over I-74\22\2302-10056\15-SHT-EXP-06.dgn
 FILE NAME: \\server\p01\benesch\005411\Documents\Projects\2022\22-23\DOT DA Work Center\22-23\DOT DA Work Center\CADD\Draw Sheets\050411-Morton Ave over I-74\22\2302-10056\15-SHT-EXP-06.dgn

X:\100005\10056\Engineer\ng\Documents_Phase_11\MortonOverI74\Final\0908141_68620_06.ex.jtd.dgn
 7/16/2012 7:36:19 AM



Concrete Removal Area

benesch
engineers · scientists · planners

Alfred Benesch & Company
206 North Michigan Avenue, Suite 2400
Chicago, Illinois 60601
312-565-0450 Job No. 10056

FILE NAME = e900141-68620_09.ex.j12.dgn	USER NAME = nbacker	DESIGNED - JDC	REVISED -
		CHECKED - MRB/AAV	REVISED -
		DRAWN - JDC	REVISED -
		CHECKED - MRB/AAV	REVISED -

FOR INFORMATION ONLY

STATE OF ILLINOIS
DEPARTMENT OF TRANSPORTATION

EXPANSION JOINT DETAILS 2 OF 3
STRUCTURE NO. 090-0141

SHEET NO. 509 OF 529 SHEETS

F.A.U. RTE.	SECTION	COUNTY	TOTAL SHEETS	SHEET NO.
74	90-114R(14)B-4,14,14HYBIBRI	TAZEWELL	2433	204B
CONTRACT NO. 68620			ILLINOIS FED. AID PROJECT	

TERRA
ENGINEERING LTD.

USER NAME = bremas	DESIGNED - BKR	REVISED -
	DRAWN - BKR	REVISED -
	CHECKED - CEM	REVISED -
	DATE - 11/01/2023	REVISED -

STATE OF ILLINOIS
DEPARTMENT OF TRANSPORTATION

EXISTING PLANS (FOR INFORMATION ONLY)
MORTON AVE OVER I-74

SCALE: 1"=20' SHEET 10 OF 13 SHEETS STA. TO STA.

F.A.U. RTE.	SECTION	COUNTY	TOTAL SHEETS	SHEET NO.
6729	(90-15-1HB)BDR	TAZEWELL	23	20
CONTRACT NO. 68H81			ILLINOIS FED. AID PROJECT	

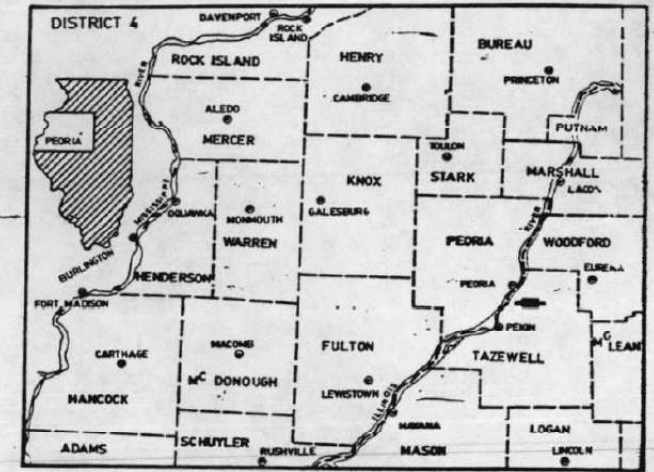
MODEL: D:\1000056\Engineering\Documents\Phase_11\MortonOverI74\Final\0900141-68620_09.ex.j12.dgn

X:\1000056\Engineering\Documents\Phase_11\MortonOverI74\Final\0900141-68620_09.ex.j12.dgn 7/16/2012 7:36:21 AM

RTE.	SECTION	COUNTY	TOTAL SHEETS	SHEET NO.
FAI 74	#	TAZEWELL	280	(1A)
STA. TO STA.				
ILLINOIS				
* (90-15-1, 15-1HB, 15W)-1				
D-94-017-90				

**STATE OF ILLINOIS
DEPARTMENT OF TRANSPORTATION
DIVISION OF HIGHWAYS
PLANS FOR PROPOSED
FEDERAL AID INTERSTATE HIGHWAY**

**F.A.I. ROUTE 74 AND F.A. ROUTE 10 SPUR
SECTION (90-15-1, 15-1HB, 15W)-1
PROJECT NHI -74-4(195)102
TAZEWELL COUNTY
C-94-004-90**



INDEX OF SHEETS

SHEET NO.	DESCRIPTION
1-1A	COVER SHEET
2-3	TYPICAL SECTIONS
6-8	SUMMARY OF QUANTITIES
9-13	QUANTITIES NOT OTHERWISE SHOWN & SCHEDULES
14-16	GEOMETRICS AND DETAILS
17-24	CONSTRUCTION DETAILS MORTON AVENUE
25-26	PAVEMENT JOINT DETAILS
27	CLARK STREET DETAILS
28-30	CONSTRUCTION LIMITS AND RIGHT OF WAY
* 31-52	MORTON AVENUE OVER I-74 STRUCTURE NO. 090-0145 PLANS
53-55	BRIDGE APPROACH PAVEMENT DETAILS
56	PAVEMENT MARKING PLAN
57-61	LIGHTING PLANS AND DETAILS
62-74	SIGNING LAYOUT AND DETAILS
75-78	SHEET PILE WALL DETAILS
79	MEDIAN CROSSOVER STA. 684+70.5 FAI-74 DETAIL
80-87	SPECIAL DETAILS (Includes sheets 80A thru 80C)
88-89	CONSTRUCTION STAGING
90-90a	MASTER SHEAR DIAGRAM
STAGE I	
91	MASTER PLAN, NOTES AND EARTHWORK
92	SUMMARY OF QUANTITIES INDEX OF SHEETS
93	QUANTITIES NOT OTHERWISE SHOWN
94	SHEAR DIAGRAM
95-108	PLAN AND PROFILE, DETAILS
109-109a	TREE REMOVAL LIMITS SHEET
110-152	CROSS SECTIONS (NO SHEETS 130-133)
STAGE II	
153	MASTER PLAN, NOTES AND EARTHWORK
154	SUMMARY OF QUANTITIES INDEX OF SHEETS
155	QUANTITIES NOT OTHERWISE SHOWN
156	SHEAR DIAGRAM
157-164	PLAN AND PROFILE, DETAILS
165-181	CROSS SECTIONS
STAGE III	
182	MASTER PLAN, NOTES AND EARTHWORK
183	SUMMARY OF QUANTITIES INDEX OF SHEETS
184	QUANTITIES NOT OTHERWISE SHOWN
185	SHEAR DIAGRAM
186-189	PLAN AND PROFILE, DETAILS
190-201	CROSS SECTIONS
STAGE IV	
202	MASTER PLAN, NOTES AND EARTHWORK
203	SUMMARY OF QUANTITIES INDEX OF SHEETS
204	QUANTITIES NOT OTHERWISE SHOWN
205	SHEAR DIAGRAM
206-211	PLAN AND PROFILE, DETAILS
212	EXISTING STRUCTURE REMOVAL
213	RAMP L REMOVAL
214-232	CROSS SECTIONS
STAGE V	
233	MASTER PLAN, NOTES AND EARTHWORK
234	SUMMARY OF QUANTITIES INDEX OF SHEETS
235	QUANTITIES NOT OTHERWISE SHOWN
236	SHEAR DIAGRAM
237-238	PLAN AND PROFILE, DETAILS
239-242	DETOUR REMOVAL, RAMP L REMOVAL
243-280	CROSS SECTIONS

* Includes Sheets 32a, 38a, 39a, 40a, and 44a.

LIST OF STANDARDS

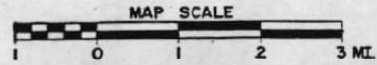
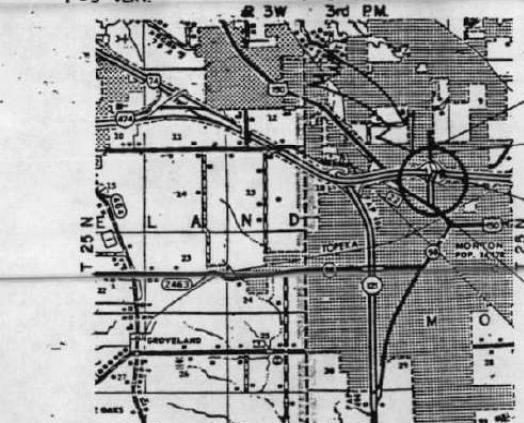
1527-9	2220-3	2308-6	
1663-4	2228-4	2311-9	2362-3
1686-4	2230-1b	2313-5	2364-1
1744-5	2237-11	2315-8	2381
2051-1	2256-10	2316-5	2388-3
2113-2	2258-4	2319-5	2384-1
2122-5	2262-4	2323-12	2386
2130-2	2258-9	2324-8	2419
2135	2259-13	2327-11	2428
2149-11	2300-3	2336-4	2429-2
2168-11	2301-5	2338-1	2434
2212-3	2302-6	2341-5	2436
2213-4	2305-6	2350-3	2438
2214-4	2306-1	2357-2	2442
2217-3	2307-1	2358-3	2443
		U-2	

CONTRACT NO. 88234

AS REVISED

090-0141

AS REVISED 11/27/93 NCS



HIGHWAY CLASSIFICATION (FA RTE 10 SPUR)
CLASSIFICATION - URBAN MINOR ARTERIAL
ACCESS CONTROL - CONTROLLED
DESIGN SPEED - 40 M.P.H.

GROSS LENGTH OF IMPROVEMENT:	
F.A. ROUTE 10 SPUR	= 3116.29 FEET = 0.590 MILE
NET LENGTH OF IMPROVEMENT:	
F.A. ROUTE 10 SPUR	= 3116.29 FEET = 0.590 MILE

DESIGN DESIGNATION
FAI 74 - TRUNK (70 M.P.H.)
URBAN MINOR ARTERIAL TS-2 (40 M.P.H.) (2190) (2004)
6.03(PCC-20), RAMPS 6.70 (PCC-20)

ADT's (1992)
I-74 27,850
MORTON AVE 13,200

MORTON AVENUE IMPROVEMENT ENDS
STA. 56+50.00 F.A. ROUTE 10 SPUR

STATION EQUATION
STA. 46+57.62 BK.
STA. 48+25.33 AHD.

BRIDGE STA. 35+16.27 TO
STA. 37+70.27

MORTON AVENUE IMPROVEMENT BEGINS
STA. 23+66.00 F.A. ROUTE 10 SPUR

LOCATION OF SECTION INDICATED THIS:

TOTAL SHEETS = 280

PROPOSED IMPROVEMENT: CONSISTS PRIMARILY OF THE REPLACEMENT OF THE UNCONVENTIONAL "DIRECTIONAL DIAMOND" INTERCHANGE WITH A CONVENTIONAL FOUR-QUADRANT PARTIAL CLOVER LEAF INTERCHANGE. THE IMPROVEMENT OF MORTON AVENUE AND A NEW STRUCTURE OVER I-74 IS ALSO INCLUDED IN THE PROJECT. THE IMPROVEMENTS SHALL BE MADE WHILE THE EXISTING INTERCHANGE IS OPEN TO TRAFFIC USING STAGE CONSTRUCTION. THE EXISTING STRUCTURE IS ALSO TO BE REMOVED.

SIGNATURE BLOCK ON SHEET 2

STATE OF ILLINOIS
DEPARTMENT OF TRANSPORTATION
DIVISION OF HIGHWAYS

APPROVED: *W. H. ...*
DESIGNED: *DEE*
CHECKED: *...*
DATE: *Oct 23 1992*
APPROVED: *Oct 23 1992*
Robert S. ...

PLANS PREPARED BY
R.A.N. CONSULTANTS, INC.
ENGINEERS - LAND SURVEYORS, PEORIA
Kenneth G. Rossbeck
MAY 22 1992
KENNETH G. ROSSBECK
LICENSE # 0808/92



FOR UNDERGROUND UTILITY LOCATIONS, CALL
J.U.L.I.E.
TOLL FREE
TEL. 800-892-0123

DESIGNED BY R.A.N. CONSULTANTS, INC.

TAZEWELL COUNTY SECTION (90-15-1, 15-1HB, 15W)-1 F.A.I. ROUTE 74 AND F.A. ROUTE 10 SPUR

Sheets 1 thru 100

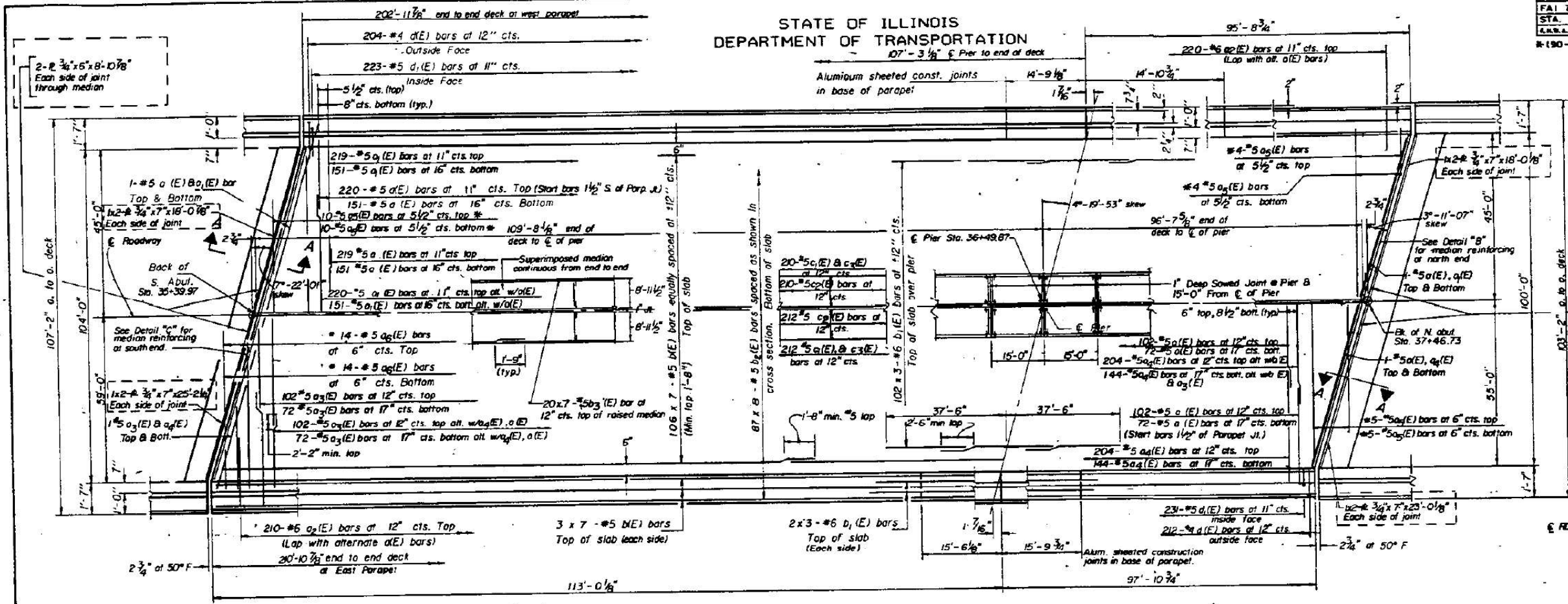
FOR INFORMATION ONLY

SN. 090-01481

	USER NAME = bremnas	DESIGNED - BKR	REVISED -	STATE OF ILLINOIS DEPARTMENT OF TRANSPORTATION	EXISTING PLANS (FOR INFORMATION ONLY)		F.A.U. RTE. 6729 SECTION (90-15-1HB)BDR COUNTY TAZEWELL TOTAL SHEETS 23 SHEET NO. 22 CONTRACT NO. 68H81
	PLOT SCALE = 2,000' / in.	CHECKED - CEM	REVISED -		SCALE: 1"=20' SHEET 12 OF 13 SHEETS STA. TO STA.	ILLINOIS FED. AID PROJECT	
	PLOT DATE = 11/7/2024	DATE = 11/01/2023	REVISED -				

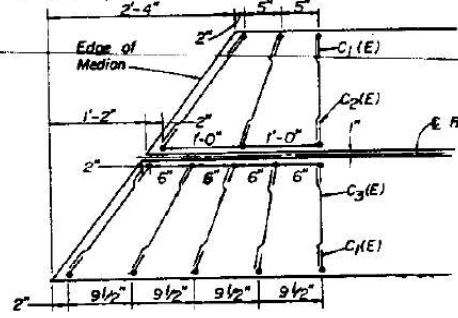
RTE.	SECTION	COUNTY	TOTAL SHEETS	SHEET NO.
FAI 74	#	TAZEWELL	290	284
STA.	TO STA.			
ILLINOIS				
R-190-15-1, 15-1HB, 15W1-1				
SHEET 8 OF 22				

STATE OF ILLINOIS
DEPARTMENT OF TRANSPORTATION



PLAN

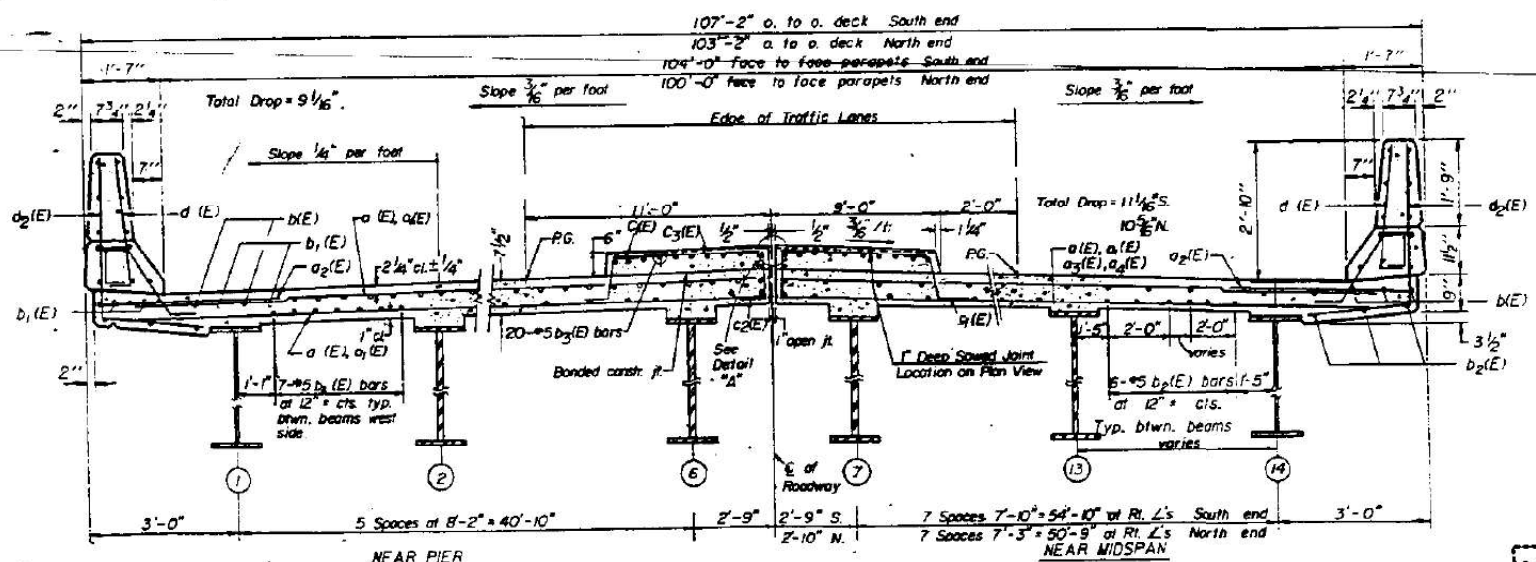
* Order $a_3(E)$ & $a_6(E)$ bars full length. Cut to fit skew and use remainder of bars in opposite face of deck slab.



DETAIL "C"
RAISED MEDIAN REINFORCEMENT

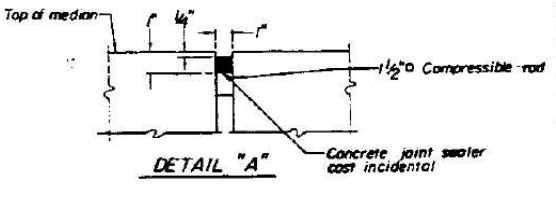
DESIGNED	L.L. VIELEY
CHECKED	D.L.M.
DRAWN	C.D. SNEDDEN
CHECKED	L.L.V.
S-2-L(30°) 12-1-83	

R.A.N. CONSULTANTS INC.



CROSS SECTION
(Looking North)

Notes: See sheet 9 & 10 for superstructure details and Bill of Material. Reinforcement bars designated (E) shall be epoxy coated. Bars indicated thus 20 x 3-#5 etc. indicates 20 lines of bars with 3 lengths per line. See sheets 17 and 18 for section 7' cut above. All parapet joints are perpendicular to centerline of roadway. See sheet 1 of 21 for Floor Drain Location.



DETAIL "A"

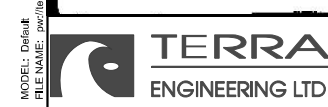
SUPERSTRUCTURE				
FAI 74	FAU 6729			
SECTION (90-15-1, 15-1HB, 15W1-1)				
TAZEWELL COUNTY				
STATION 36+49.87				

AS REVISED

FAI 74 (1-74) / FAU 6729 (MORTON AVE.)

REVISED 1/27/93 NIS

FOR INFORMATION ONLY



USER NAME	= bremnas
DESIGNED	- BKR
DRAWN	- BKR
CHECKED	- CEM
DATE	- 11/01/2023
REVISIONS	

DESIGNED	- BKR	REVISED	-
DRAWN	- BKR	REVISED	-
CHECKED	- CEM	REVISED	-
DATE	- 11/01/2023	REVISED	-

STATE OF ILLINOIS
DEPARTMENT OF TRANSPORTATION

EXISTING PLANS (FOR INFORMATION ONLY)
MORTON AVE OVER I-74

SCALE: 1"=20' SHEET 13 OF 13 SHEETS STA. TO STA.

FAU RTE.	SECTION	COUNTY	TOTAL SHEETS	SHEET NO.
6729	(90-15-1)BDR	TAZEWELL	23	23
CONTRACT NO. 68H81				
ILLINOIS FED. AID PROJECT				