

STATE OF ILLINOIS
DEPARTMENT OF TRANSPORTATION

F.A.S. RTE.	SECTION	COUNTY	TOTAL SHEETS	SHEET NO.
2245	006(22-B,22B-1)BP-2	BUREAU	13	1
		ILLINOIS	CONTRACT NO. 66N93	

INDEX OF SHEETS

- 1 . COVER SHEET
- 2 . GENERAL NOTES
- 3 - 4 . SUMMARY OF QUANTITIES
- 5 . TYPICAL SECTIONS
- 6 - 7 . SCHEDULES
- 8 - 9 . TRAFFIC CONTROL AND PROTECTION, STANDARD 701321
- 10 . GUARDRAIL, BARRIER WALL REFLECTORS AND LINEAR DELINEATOR FOR TEMPORARY CONCRETE BARRIER MOUNTING DETAILS.
- 11 - 12 . PAVEMENT STRIPING
- 13 . TEMPORARY INFORMATION SIGNING.

HIGHWAY STANDARDS

- 000001-08 STANDARD SYMBOLS, ABBREVIATIONS AND PATTERNS
- 001006-00 DECIMAL OF AN INCH AND OF A FOOT
- 701001-02 OFF-ROAD OPERATIONS 2L, 2W, MORE THAN 15' AWAY
- 701006-05 OFF-ROAD OPERATIONS 2L, 2W, 15' TO 24" FROM PAVEMENT EDGE
- 701301-04 LANE CLOSURE, 2L, 2W, SHORT TIME OPERATIONS
- 701201-05 LANE CLOSURE, 2L, 2W, DAY ONLY, FOR SPEEDS ≥ 45 MPH
- 701321-18 LANE CLOSURE, 2L, 2W, BRIDGE REPAIR WITH BARRIER
- 701901-09 TRAFFIC CONTROL DEVICES
- 704001-08 TEMPORARY CONCRETE BARRIER

**PROPOSED
HIGHWAY PLANS**

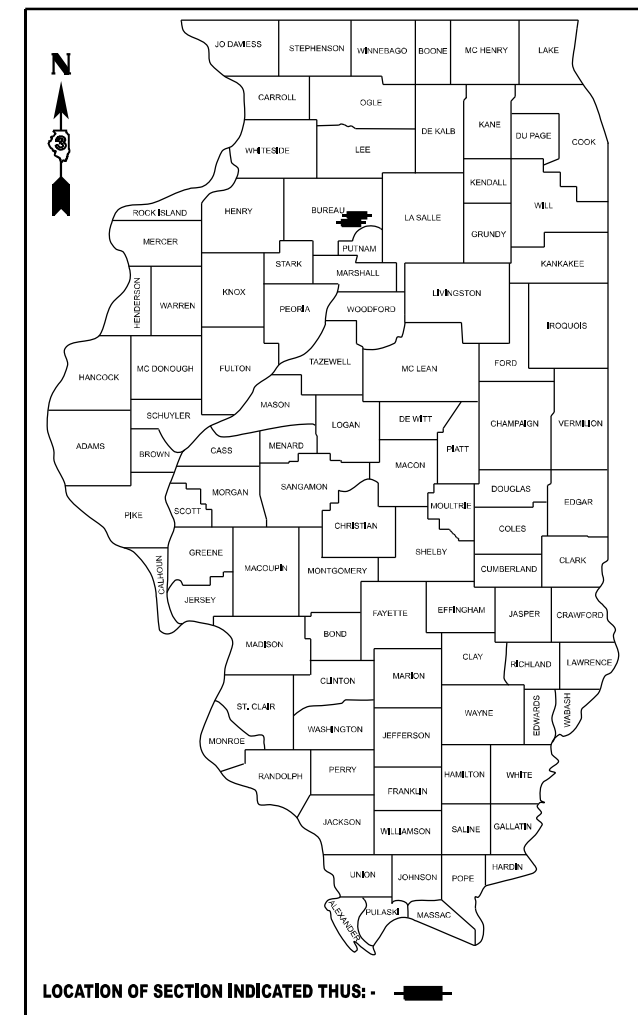
F.A.S. ROUTE 2245 (IL 29/26, IL 29)

SECTION 006(22-B,22B-1)BP-2

PROJECT STP-R8VC(363)

**BRIDGE PAINTING
BUREAU COUNTY**

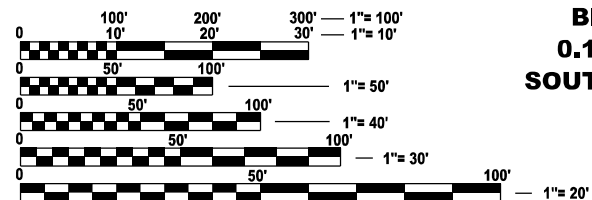
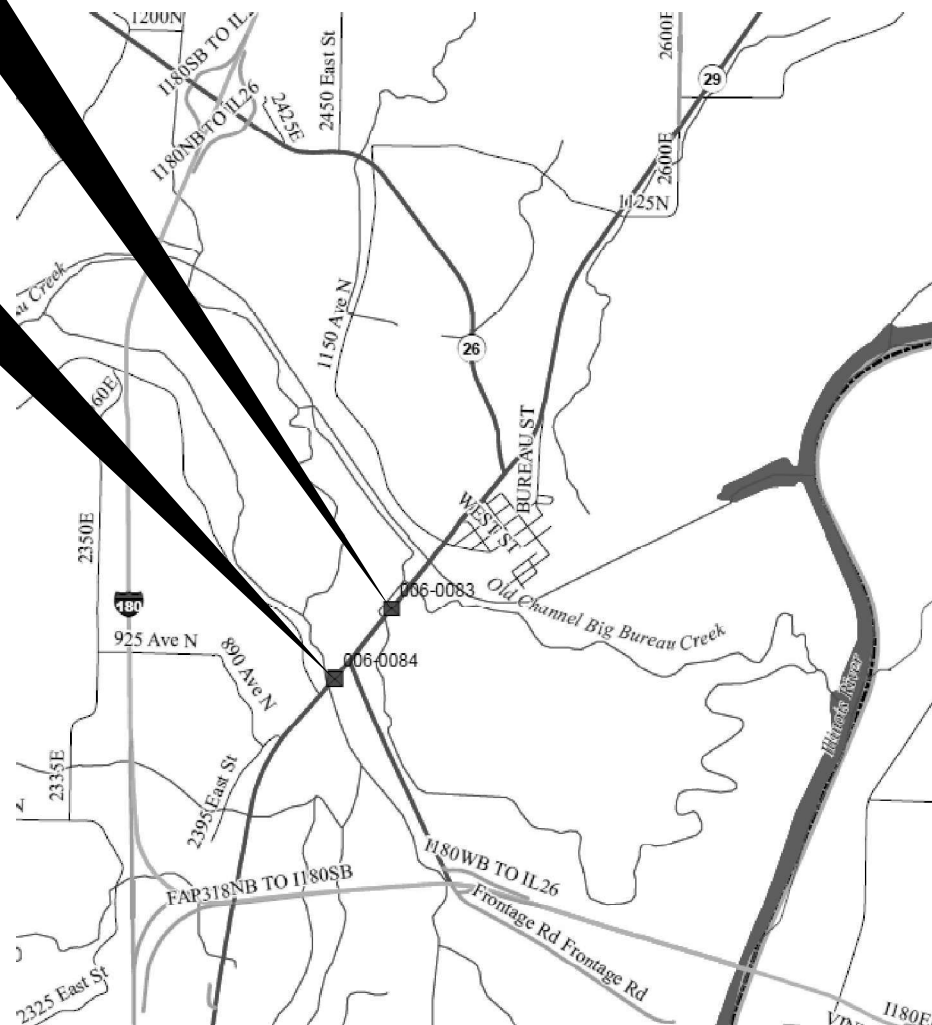
D-93-004-24



PROJECT LOCATION 1
STRUCTURE NO. 006-0083
SECTION 22B-1
CARRYING IL 29/26 OVER
BUREAU CREEK OVERFLOW
0.3 MI. NORTH OF THE
SOUTH JUNCTION OF IL 26

C-93-038-24

PROJECT LOCATION 2
STRUCTURE NO. 006-0084
SECTION 22B
CARRYING IL 29 OVER
BIG BUREAU CREEK
0.1 MI. SOUTH OF THE
SOUTH JUNCTION OF IL 26



FULL SIZE PLANS HAVE BEEN PREPARED USING STANDARD ENGINEERING SCALES. REDUCED SIZED PLANS WILL NOT CONFORM TO STANDARD SCALES. IN MAKING MEASUREMENTS ON REDUCED PLANS, THE ABOVE SCALES MAY BE USED.

J.U.L.I.E.
JOINT UTILITY LOCATION INFORMATION FOR EXCAVATION
1-800-892-0123
OR 811

PROJECT ENGINEER: YOGESH PATEL P.E.
UNIT CHIEF: RON WOODSHANK
DISTRICT 3 (815) 434-6131
CONTRACT NO. 66N93

FUNCTIONAL CLASSIFICATION
RURAL MAJOR COLLECTOR
F.A.S. ROUTE 2245 (IL 29, IL29/26)
2021 ADT = 1250
P.V. 89.7 % S.U. 4.4 % M.U. 5.9 %

STATE OF ILLINOIS
DEPARTMENT OF TRANSPORTATION

SUBMITTED February 02, 2024

Stephen M. Travis REGIONAL ENGINEER
March 22, 2024

Scott A. Etk ENGINEER OF DESIGN AND ENVIRONMENT
March 22, 2024

Stephen M. Travis DIRECTOR OF HIGHWAYS PROJECT IMPLEMENTATION

**PRINTED BY THE AUTHORITY
OF THE STATE OF ILLINOIS**

GENERAL NOTES

PLAN DIMENSIONS AND DETAILS RELATIVE TO EXISTING PLANS ARE SUBJECT TO NOMINAL CONSTRUCTION VARIATIONS. THE CONTRACTOR SHALL FIELD VERIFY EXISTING DIMENSIONS AND DETAILS AFFECTING NEW CONSTRUCTION AND MAKE NECESSARY APPROVED ADJUSTMENTS PRIOR TO CONSTRUCTION OR ORDERING OF MATERIALS. SUCH VARIATIONS SHALL NOT BE CAUSE FOR ADDITIONAL COMPENSATION FOR A CHANGE IN SCOPE OF WORK; HOWEVER, THE CONTRACTOR WILL BE PAID FOR THE QUANTITY ACTUALLY FURNISHED AT THE UNIT PRICE BID FOR THE WORK.

STRUCTURE NO. 006-0083 SHALL BE DESIGNATED AS "LOCATION 1".

STRUCTURE NO. 006-0084 SHALL BE DESIGNATED AS "LOCATION 2".

THE SSPC-QP1 "PAINTING CONTRACTOR CERTIFICATION" WILL BE REQUIRED FOR THIS PROJECT.

CLEANING AND PAINTING OF EXISTING STRUCTURAL STEEL SHALL BE AS SPECIFIED IN THE SPECIAL PROVISION FOR "CLEANING AND PAINTING EXISTING STEEL STRUCTURES" AND AS SPECIFIED BELOW.

- a) ALL EXISTING STRUCTURAL STEEL, (INCLUDING BEAMS/GIRDERS, DIAPHRAGMS, CROSS/LATERAL FRAMING, STEEL COMPONENTS OF BEARINGS, DRAINS, ANGLE BRACKETS, STEEL HANDRAILS (WHEN PRESENT) SHALL BE CLEANED PER THE REQUIREMENTS OF "NEAR WHITE BLAST CLEANING - SSPC-SP-10".
 - b) ALL EXISTING STRUCTURAL STEEL, (INCLUDING BEAMS/GIRDERS, DIAPHRAGMS, CROSS/LATERAL FRAMING, STEEL COMPONENTS OF BEARINGS, DRAINS, ANGLE BRACKETS, STEEL HANDRAILS (WHEN PRESENT) SHALL BE PAINTED PER THE REQUIREMENTS OF "PAINT SYSTEM 1-OZ/E/U".
- 1) THE FINAL FINISH COAT FOR ALL INTERIOR STRUCTURAL STEEL SHALL BE "GRAY, MUNSELL NO. 5B 7/1".
 - 2) FINISH COAT FOR EXTERIOR FACE, BOTTOM FLANGE AND BEARING ASSEMBLIES OF THE FASCIA BEAMS SHALL BE "GREEN, MUNSELL NO. 7.5G 1/2".

THE CONTRACTOR SHALL BE REQUIRED TO SECURE WASTE CONTAINERS THAT REMAIN ON THE JOB SITE. THIS WILL ENTAIL THAT ALL WASTE CONTAINERS CAN NOT BE MOVED OR OPENED DURING NON-WORKING HOURS.

WORKING DAYS SHALL BE CHARGED UNTIL THE CONTRACTOR/SUBCONTRACTOR LISCENSED TO DISPOSE OF NON-LEAD PAINT RESIDUES HAS REMOVED THE WASTE MATERIAL FROM THE JOB SITE ACCORDING TO ALL FEDERAL, STATE AND LOCAL LAWS AND ORDINANCES. IF THE LISCENSED CONTRACTOR OR SUBCONTRACTOR FAILS TO DISPOSE OF THE NON-LEAD PAINT RESIDUES ON OR BEFORE THE SPECIFIED COMPLETION DATE, LIQUIDATED DAMAGES SHALL BE CHARGED PER CALENDAR DAY ACCORDING TO ARTICLE 108.09 OF THE STANDARD SPECIFICATIONS UNTIL SUCH TIME THAT ALL PAINT RESIDUE MATERIALS HAVE BEEN PROPERLY REMOVED AND DISPOSED OF.

COMMITMENTS

NONE

**STATE OF ILLINOIS
DEPARTMENT OF TRANSPORTATION
DISTRICT THREE
AS BUILT INFORMATION**

SUPERVISING CONSTRUCTION FIELD ENGINEER

RESIDENT ENGINEER / TECHNICIAN

**START & END DATES
OF CONSTRUCTION:**

INSPECTORS:

**STATE OF ILLINOIS
DEPARTMENT OF TRANSPORTATION**

GENERAL NOTES

SCALE: SHEET 1 OF 1 SHEETS STA. TO STA.

F.A.S. RTE.	SECTION	COUNTY	TOTAL SHEETS	SHEET NO.
2245	006(22-B,22B-1)BP-2	BUREAU	13	2
			CONTRACT NO. 66N93	
		ILLINOIS	FED. AID PROJECT	

MODEL: D:\infuit... FILE NAME: ...

CODE NO.	ITEM	UNIT	TOTAL QUANTITY	CONSTRUCTION CODE	
				BRIDGE PAINTING	BRIDGE PAINTING
				80 % FED. / 20% STATE	80 % FED. / 20% STATE
				BRIDGE	BRIDGE
				0047	0047
				S.N. 006-0083	S.N. 006-0084
X7010101	TRAFFIC CONTROL AND PROTECTION, STANDARD 701201 (SPECIAL)	EACH	2	1	1
Z0010501	CLEANING AND PAINTING STEEL BRIDGE NO. 1	L SUM	1	1	
Z0010502	CLEANING AND PAINTING STEEL BRIDGE NO. 2	L SUM	1		1
Z0030850	TEMPORARY INFORMATION SIGNING	SQ FT	42	21	21

MODEL: D:\in\it...
 FILE NAME: ...

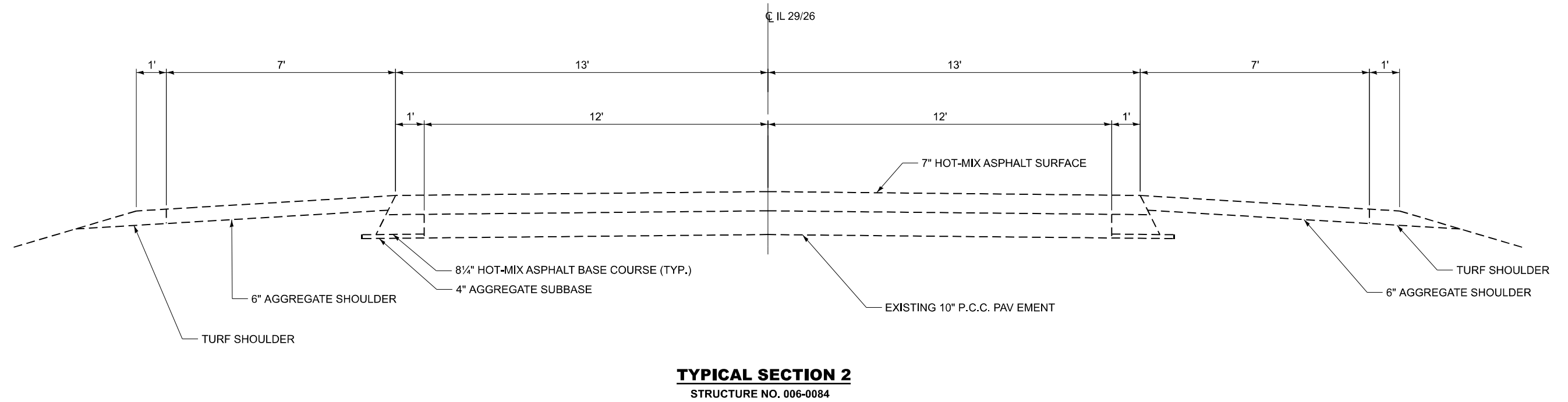
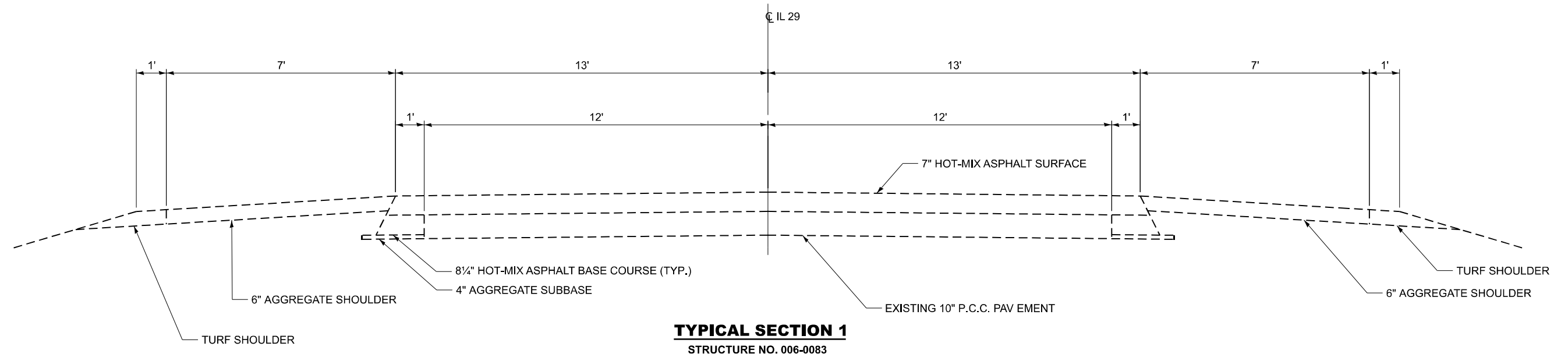
USER NAME = ronald.woodshank	DESIGNED - RW	REVISED -
DRAWN - RW	CHECKED - YP	REVISED -
PLOT SCALE = 100.0' / in.	DATE - 8/21/2023	REVISED -
PLOT DATE = 1/6/2024		

**STATE OF ILLINOIS
DEPARTMENT OF TRANSPORTATION**

SUMMARY OF QUANTITIES

SCALE: SHEET 2 OF 2 SHEETS STA. TO STA.

F.A.S. RTE.	SECTION	COUNTY	TOTAL SHEETS	SHEET NO.
2245	006(22-B,22B-1)BP-2	BUREAU	13	4
CONTRACT NO. 66N93				
ILLINOIS FED. AID PROJECT				



MODEL: D:\inf\... FILE NAME: ...

USER NAME = ronald.woodshank	DESIGNED - RW	REVISED -
DRAWN - RW	CHECKED - YP	REVISED -
PLOT SCALE = 100.0' / in.	DATE - 8/21/2023	REVISED -
PLOT DATE = 1/6/2024		

**STATE OF ILLINOIS
DEPARTMENT OF TRANSPORTATION**

TYPICAL SECTIONS

SCALE: SHEET 1 OF 1 SHEETS STA. TO STA.

F.A.S. RTE.	SECTION	COUNTY	TOTAL SHEETS	SHEET NO.
2245	006(22-B,22B-1)BP-2	BUREAU	13	5
CONTRACT NO. 66N93				
ILLINOIS FED. AID PROJECT				

SCHEDULES FOR TRAFFIC CONTROL

LOCATION	TRAFFIC CONTROL AND PROTECTION STANDARD 701321	TRAFFIC CONTROL AND PROTECTION STANDARD 701201	TEMPORARY RUMBLE STRIPS (SPECIAL)	TEMPORARY CONCRETE BARRIER	IMPACT ATTENUATORS, TEMPORARY NON-REDIRECTIVE, NARROW TEST LEVEL 3
	EACH	EACH	EACH	FOOT	EACH
STRUCTURE NO. 006 0083	1	1	3	375	2
TOTAL	1	1	3	375	2

SCHEDULES FOR PAVEMENT MARKING

LOCATION	PAVEMENT MARKING REMOVAL WATERBLASTING	MODIFIED URETHANE PAVEMENT MARKING LINE 4"	MODIFIED URETHANE PAVEMENT MARKING LINE 6"
	SQ FT	FOOT	FOOT
STRUCTURTE NO. 006-0083	320	685	190
TOTAL	320	685	190

SCHEDULE - CLEANING & PAINTING

LOCATION	CONTAINMENT AND DISPOSAL OF NON-LEAD PAINT CLEANING RESIDUES NO. 1	CLEANING AND PAINTING STEEL BRIDGE NO. 1	BRIDGE CLEANING AND PAINTING WARRANTY NUMBER 1
	L SUM	L SUM	L SUM
STRUCTURE NO. 006-0083	1	1	1
TOTAL	1	1	1

MODEL: D:\infuit...
FILE NAME: ...

USER NAME = ronald.woodshank	DESIGNED - RW	REVISED -
	DRAWN - RW	REVISED -
PLOT SCALE = 100.0' / in.	CHECKED - YP	REVISED -
PLOT DATE = 1/6/2024	DATE - 8/21/2023	REVISED -

**STATE OF ILLINOIS
DEPARTMENT OF TRANSPORTATION**

**SCHEDULES
FOR STRUCTURE NO. 006-0083**

SCALE: SHEET 1 OF 2 SHEETS STA. TO STA.

F.A.S. RTE.	SECTION	COUNTY	TOTAL SHEETS	SHEET NO.
2245	006(22-B,22B-1)BP-2	BUREAU	13	6
			CONTRACT NO. 66N93	
		ILLINOIS	FED. AID PROJECT	

SCHEDULES FOR TRAFFIC CONTROL

LOCATION	TRAFFIC CONTROL AND PROTECTION STANDARD 701321	TRAFFIC CONTROL AND PROTECTION STANDARD 701201	TEMPORARY RUMBLE STRIPS (SPECIAL)	TEMPORARY CONCRETE BARRIER	IMPACT ATTENUATORS, TEMPORARY NON-REDIRECTIVE, NARROW TEST LEVEL 3
	EACH	EACH	EACH	FOOT	EACH
STRUCTURE NO. 006 0084	1	1	3	475	2
TOTAL	1	1	3	475	2

SCHEDULES FOR PAVEMENT MARKING

LOCATION	PAVEMENT MARKING REMOVAL WATERBLASTING	MODIFIED URETHANE PAVEMENT MARKING LINE 4"	MODIFIED URETHANE PAVEMENT MARKING LINE 6"	MODIFIED URETHANE PAVEMENT MARKING LINE 12"
	SQ FT	FOOT	FOOT	FOOT
STRUCTURTE NO. 006-0084	741	1760	110	105
TOTAL	741	1760	110	105

SCHEDULE - CLEANING & PAINTING

LOCATION	CONTAINMENT AND DISPOSAL OF NON-LEAD PAINT CLEANING RESIDUES NO. 2	CLEANING AND PAINTING STEEL BRIDGE NO. 2	BRIDGE CLEANING AND PAINTING WARRANTY NUMBER 2
	L SUM	L SUM	L SUM
STRUCTURE NO. 006-0084	1	1	1
TOTAL	1	1	1

MODEL: D:\infuit...
FILE NAME: ...

USER NAME = ronald.woodshank	DESIGNED - RW	REVISED -
	DRAWN - RW	REVISED -
PLOT SCALE = 100.0' / in.	CHECKED - YP	REVISED -
PLOT DATE = 1/6/2024	DATE - 8/21/2023	REVISED -

**STATE OF ILLINOIS
DEPARTMENT OF TRANSPORTATION**

**SCHEDULES
FOR STRUCTURE NO. 006-0084**

SCALE: SHEET 2 OF 2 SHEETS STA. TO STA.

F.A.S. RTE.	SECTION	COUNTY	TOTAL SHEETS	SHEET NO.
2245	006(22-B,22B-1)BP-2	BUREAU	13	7
			CONTRACT NO. 66N93	
		ILLINOIS	FED. AID PROJECT	

LEGEND

- WORK AREA
- SIGN
- TYPE III BARRICADE WITH FLASHING LIGHTS
- CRYSTAL, BIDIRECTIONAL GUARDRAIL REFLECTOR, TYPE A
- TEMPORARY CONCRETE BARRIER
- DRUM
- TEMPORARY RUMBLE STRIPS (SPECIAL)
- BIDIRECTIONAL CONCRETE BARRIER WALL REFLECTOR, TYPE C
- TRAFFIC SIGNAL WITH BACKPLATE
- TRAFFIC SIGNAL WITH BACKPLATE AND MICROWAVE DETECTOR
- TEMPORARY IMPACT ATTENUATORS (NON-REDIRECTIVE, NARROW) TEST LEVEL 3
- DRUM WITH STEADY BURN BI-DIRECTIONAL LIGHT
- MONO-DIRECTIONAL FLASHING LIGHT

GENERAL NOTES

THIS STANDARD IS USED WHERE, AT ANY TIME, ANY VEHICLE, EQUIPMENT, WORKERS, OR THEIR ACTIVITIES WILL ENCROACH ON ONE LANE OF A BRIDGE. TRAFFIC SIGNALS AND A POSITIVE BARRIER ARE REQUIRED.

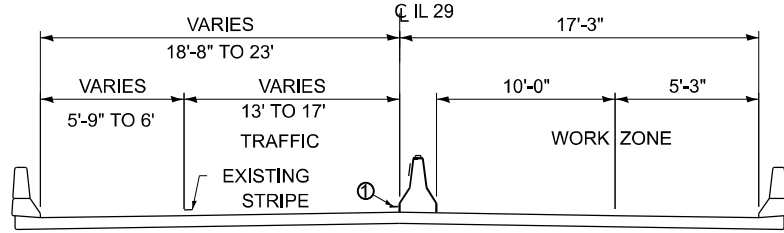
TRAFFIC SIGNALS SHALL BE OPERATIONAL ONLY WHEN ALL TRAFFIC CONTROLS ARE IN PLACE. WHEN TRAFFIC SIGNALS ARE NOT IN OPERATION, FLAGGERS SHALL BE USED AND TRAFFIC CONTROL SHALL CONFORM TO STANDARD 701201 OR 701206.

TEMPORARY CONCRETE BARRIER SHALL BE ACCORDING TO STANDARD 704001 AND THE DETAIL "LINEAR DELIEATOR PANELS FOR TEMPORARY CONCRETE BARRIER".

GUARDRAIL REFLECTORS TYPE, A AND TYPE C AS SHOWN ON THIS DETAIL SHALL NOT BE PAID FOR SEPARATELY BUT SHALL BE INCLUDED IN THE COST OF THE TEMPORARY CONCRETE BARRIER.

EXISTING OR TEMPORARY PAVEMENT MARKINGS SHALL BE ON BOTH SIDES OF OPEN LANE FROM STOP BAR TO STOP BAR.

TEMPORARY PAVEMENT MARKING AS SHOWN ON THIS DETAIL, SHALL NOT BE PAID FOR SEPARATELY BUT SHALL BE INCLUDED IN THE COST OF THE STANDARD.

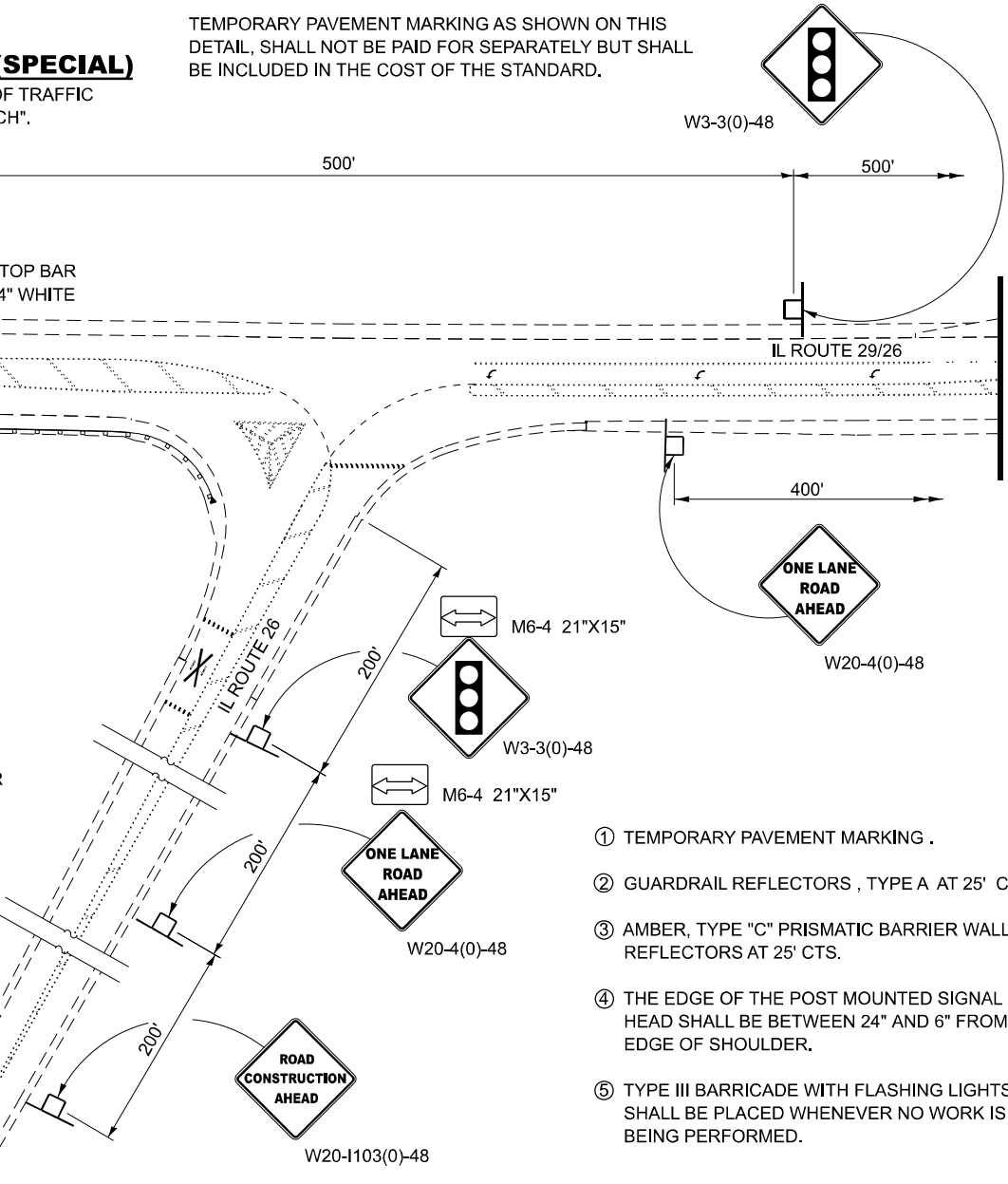
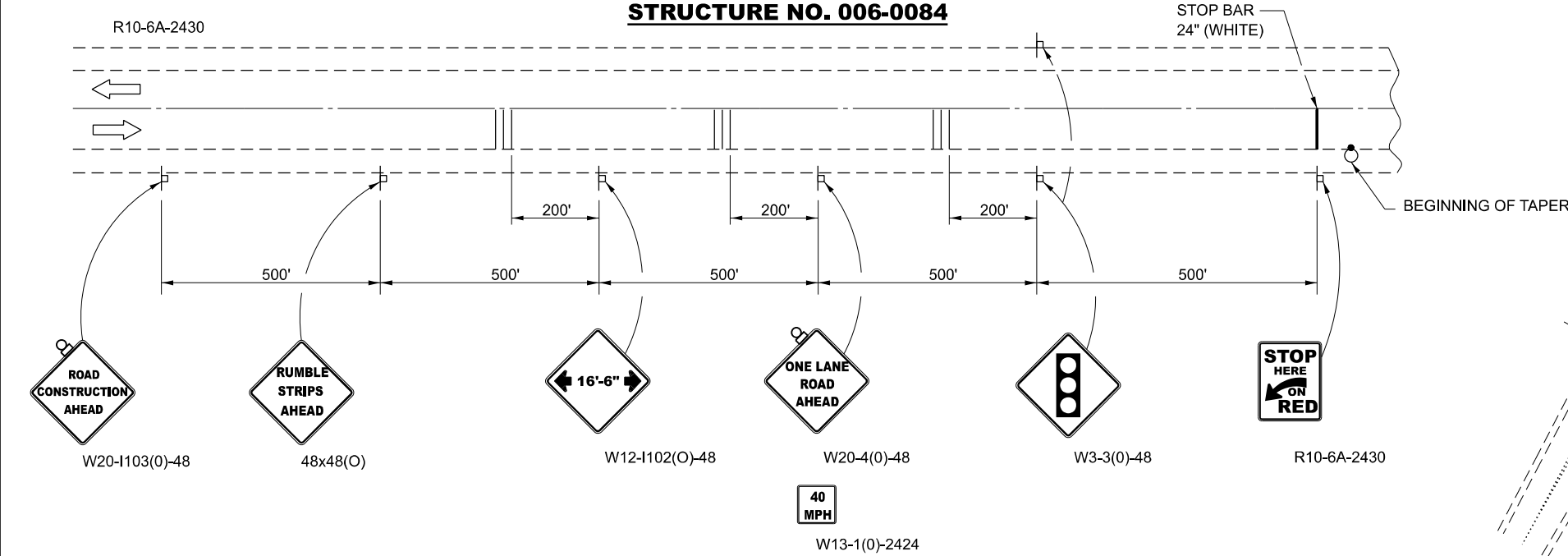
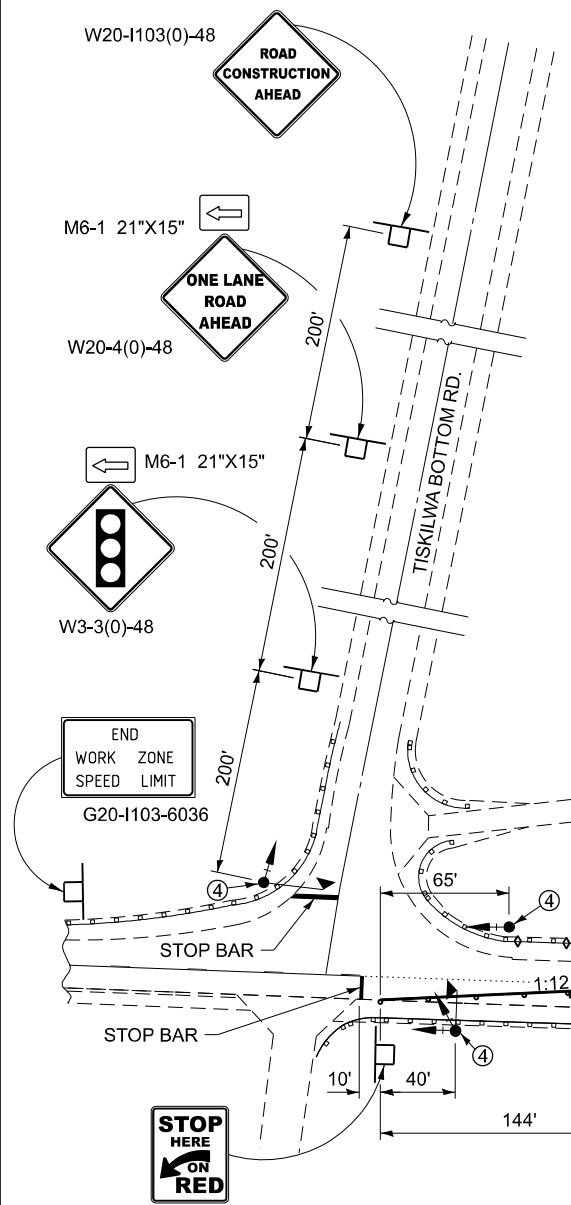
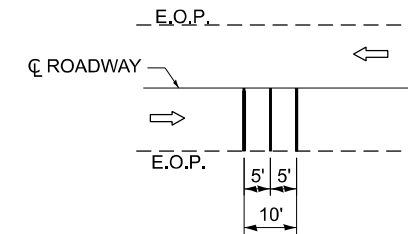


CROSS SECTION

LOOKING NORTH

TEMPORARY RUMBLE STRIP (SPECIAL)

FOR PAYMENT PURPOSES, EACH LANE OF TRAFFIC SHALL BE CONSIDERED "ONE EACH".



- ① TEMPORARY PAVEMENT MARKING .
- ② GUARDRAIL REFLECTORS , TYPE A AT 25' CTS.
- ③ AMBER, TYPE "C" PRISMATIC BARRIER WALL REFLECTORS AT 25' CTS.
- ④ THE EDGE OF THE POST MOUNTED SIGNAL HEAD SHALL BE BETWEEN 24" AND 6" FROM EDGE OF SHOULDER.
- ⑤ TYPE III BARRICADE WITH FLASHING LIGHTS SHALL BE PLACED WHENEVER NO WORK IS BEING PERFORMED.

STRUCTURE NO. 006-0084

STATE OF ILLINOIS
DEPARTMENT OF TRANSPORTATION

TRAFFIC CONTROL AND PROTECTION, STANDARD 701321
FOR STRUCTURE NO. 006-0084

F.A.S. RTE.	SECTION	COUNTY	TOTAL SHEETS	SHEET NO.
2245	006(22-8,22B-1)BP-2	BUREAU	13	8
CONTRACT NO. 66N93				
ILLINOIS FED. AID PROJECT				

USER NAME = ronald.woodshank	DESIGNED - RW	REVISED -
DRAWN - RW	CHECKED - YP	REVISED -
PLOT SCALE = 100.0' / in.	DATE - 8/21/2023	REVISED -
PLOT DATE = 1/6/2024		

MODEL: D:\in\... FILE NAME: ...

GENERAL NOTES

THIS STANDARD IS USED WHERE, AT ANY TIME, ANY VEHICLE, EQUIPMENT, WORKERS, OR THEIR ACTIVITIES WILL ENCRANCH ON ONE LANE OF A BRIDGE, TRAFFIC SIGNALS AND A POSITIVE BARRIER ARE REQUIRED.

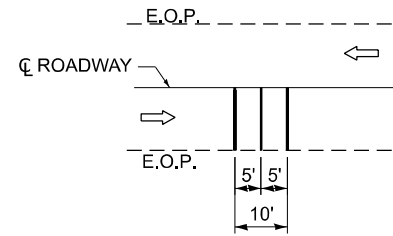
TRAFFIC SIGNALS SHALL BE OPERATIONAL ONLY WHEN ALL TRAFFIC CONTROLS ARE IN PLACE. WHEN TRAFFIC SIGNALS ARE NOT IN OPERATION, FLAGGERS SHALL BE USED AND TRAFFIC CONTROL SHALL CONFORM TO STANDARD 701201 OR 701206.

TEMPORARY CONCRETE BARRIER SHALL BE ACORDING TO STANDARD 704001 AND THE DETAIL "LINEAR DELIEATOR PANELS FOR TEMPORARY CONCRETE BARRIER".

GUARDRAIL REFLECTORS TYPE, A AND TYPE C AS SHOWN ON THIS DETAIL SHALL NOT BE PAID FOR SEPARATELY BUT SHALL BE INLCUDED IN THE COST OF THE TEMPORARY CONCRETE BARRIER.

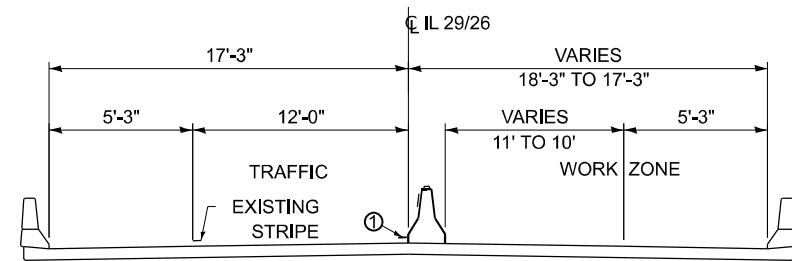
EXISTING OR TEMPORARY PAVEMENT MARKINGS SHALL BE ON BOTH SIDES OF OPEN LANE FROM STOP BAR TO STOP BAR.

TEMPORARY PAVEMENT MARKING AS SHOWN ON THIS DETAIL, SHALL NOT BE PAID FOR SEPARATELY BUT SHALL BE INCLUDED IN THE COST OF THE STANDARD.



TEMPORARY RUMBLE STRIP (SPECIAL)

FOR PAYMENT PURPOSES, EACH LANE OF TRAFFIC SHALL BE CONSIDERED "ONE EACH".

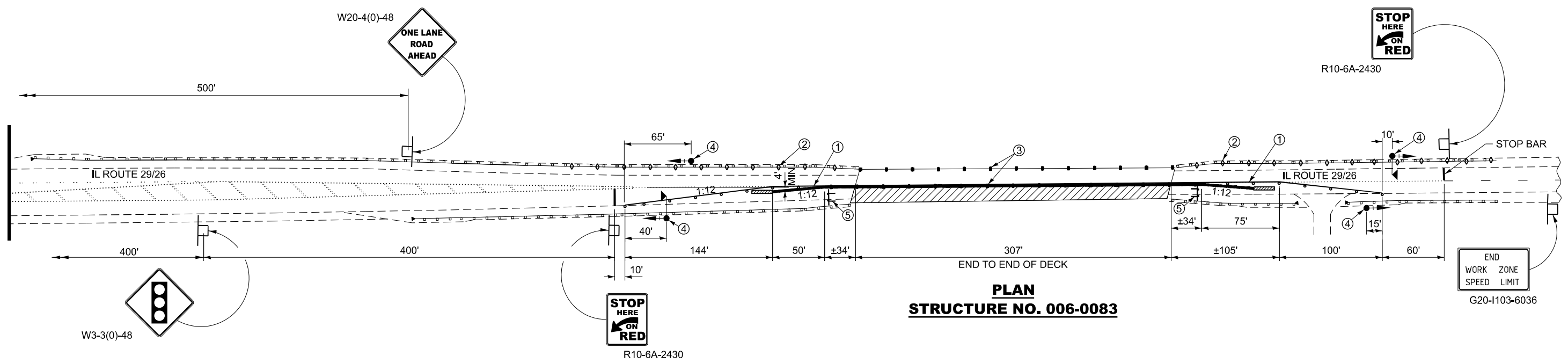
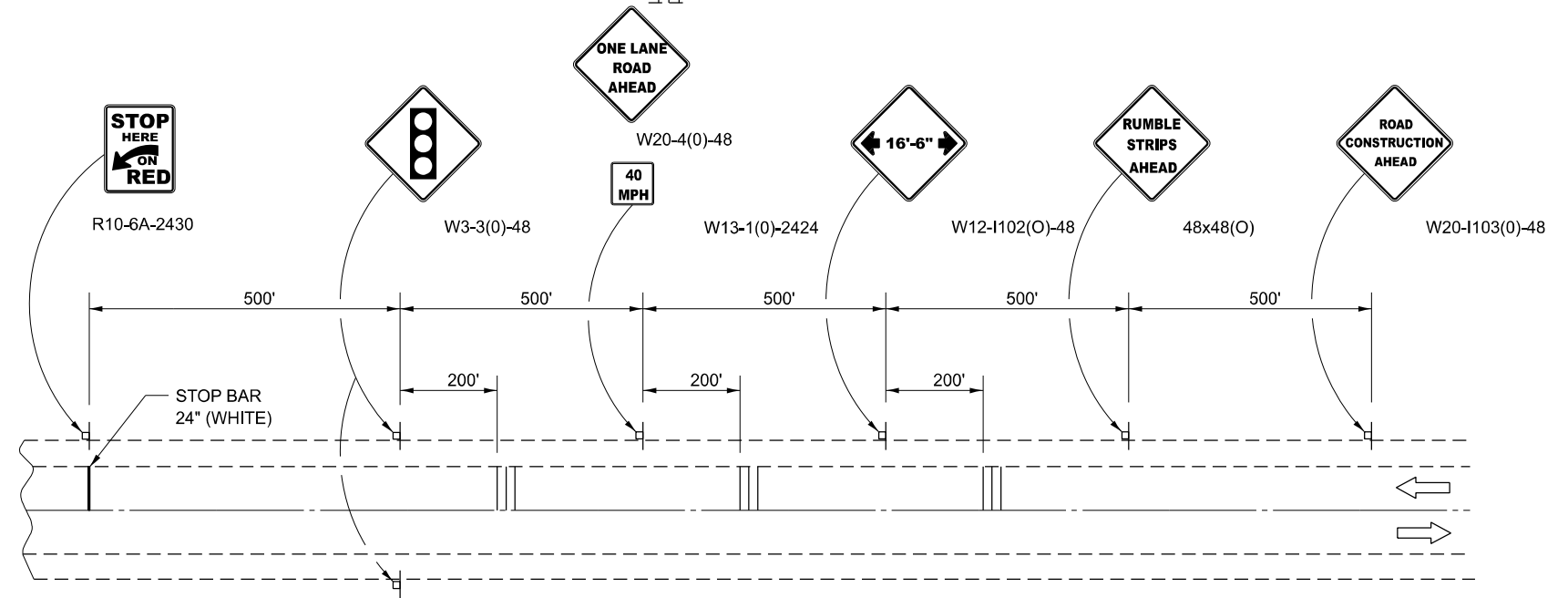


CROSS SECTION
LOOKING NORTH

- ① TEMPORARY PAVEMENT MARKING .
- ② GUARDRAIL REFLECTORS , TYPE A AT 25' CTS.
- ③ AMBER, TYPE "C" PRISMATIC BARRIER WALL REFLECTORS AT 25' CTS.
- ④ THE EDGE OF THE POST MOUNTED SIGNAL HEAD SHALL BE BETWEEN 24" AND 6" FROM EDGE OF SHOULDER.
- ⑤ TYPE III BARRICADE WITH FLASHING LIGHTS SHALL BE PLACED WHENEVER NO WORK IS BEING PERFORMED.

LEGEND

	WORK AREA		BIDIRECTIONAL CONCRETE BARRIER WALL REFLECTOR, TYPE C
	SIGN		TRAFFIC SIGNAL WITH BACKPLATE
	TYPE III BARRICADE WITH FLASHING LIGHTS		TRAFFIC SIGNAL WITH BACKPLATE AND MICROWAVE DETECTOR
	CRYSTAL, BIDIRECTIONAL GUARDRAIL REFLECTOR, TYPE A		TEMPORARY IMPACT ATTENUATORS (NON-REDIRECTIVE, NARROW) TEST LEVEL 3
	TEMPORARY CONCRETE BARRIER		DRUM WITH STEADY BURN BI-DIRECTIONAL LIGHT
	DRUM		
	TEMPORARY RUMBLE STRIPS (SPECIAL)		



PLAN
STRUCTURE NO. 006-0083

MODEL: D:\in\... FILE NAME: ...

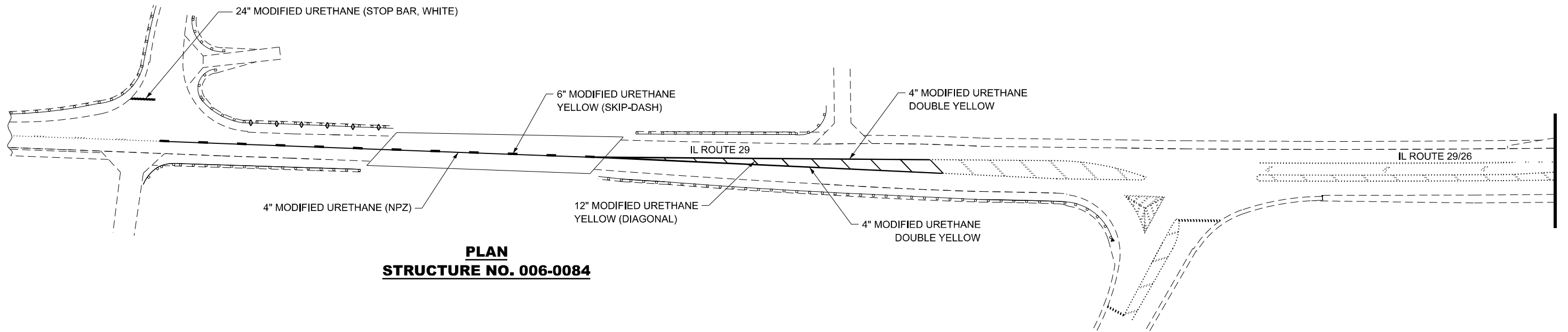
USER NAME = ronald.woodshank	DESIGNED - RW	REVISED -
DRAWN - RW	REVISED -	
PLOT SCALE = 100.0' / in.	CHECKED - YP	REVISED -
PLOT DATE = 1/6/2024	DATE - 8/21/2023	REVISED -

STATE OF ILLINOIS
DEPARTMENT OF TRANSPORTATION

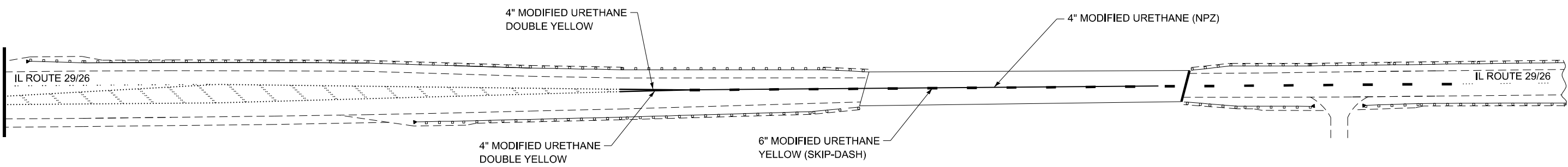
TRAFFIC CONTROL AND PROTECTION, STANDARD 701321
FOR STRUCTURE NO. 006-0083

SCALE: SHEET 1 OF 1 SHEETS STA. TO STA.

F.A.S. RTE.	SECTION	COUNTY	TOTAL SHEETS	SHEET NO.
2245	006(22-B,22B-1)BP-2	BUREAU	13	9
CONTRACT NO. 66N93			ILLINOIS FED. AID PROJECT	



PLAN
STRUCTURE NO. 006-0084



PLAN
STRUCTURE NO. 006-0083

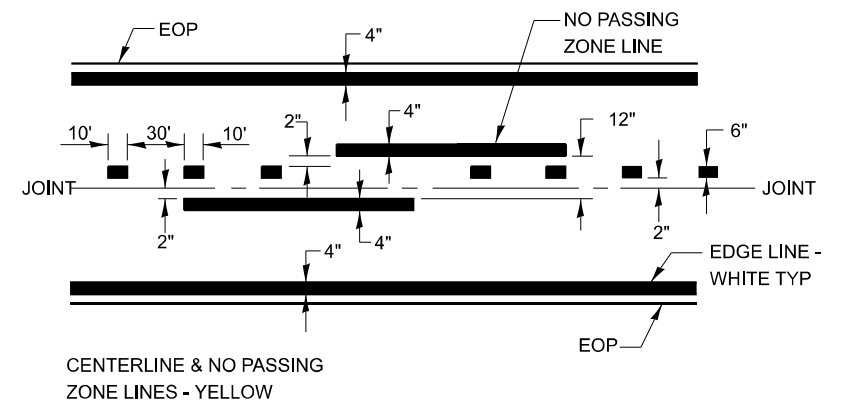
MODEL: D:\in\it...
 FILE NAME: ...

USER NAME = ronald.woodshank	DESIGNED - RW	REVISED -
DRAWN - RW	REVISOR -	REVISION -
PLOT SCALE = 100.0' / in.	CHECKED - YP	REVISOR -
PLOT DATE = 1/6/2024	DATE - 8/21/2023	REVISION -

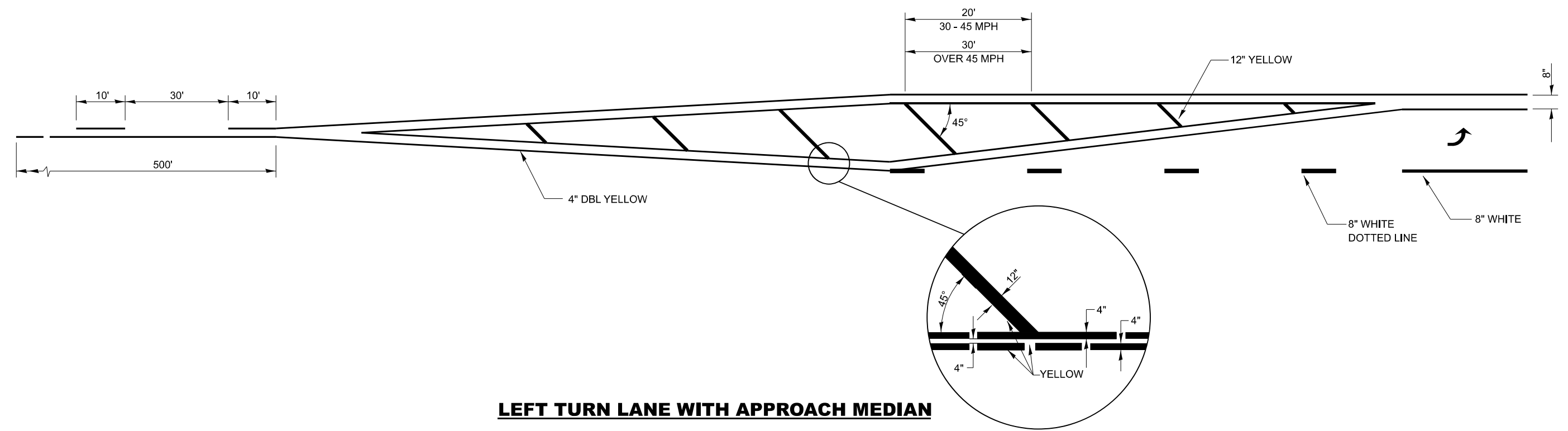
STATE OF ILLINOIS
DEPARTMENT OF TRANSPORTATION

PAVEMENT MARKING DETAILS			
SCALE:	SHEET 1	OF 2 SHEETS	STA. TO STA.

F.A.S. RTE.	SECTION	COUNTY	TOTAL SHEETS	SHEET NO.
2245	006(22-B,22B-1)BP-2	BUREAU	13	11
CONTRACT NO. 66N93				
ILLINOIS FED. AID PROJECT				



2 LANE



LEFT TURN LANE WITH APPROACH MEDIAN

MODEL: D:\inf\...
 FILE NAME: ...

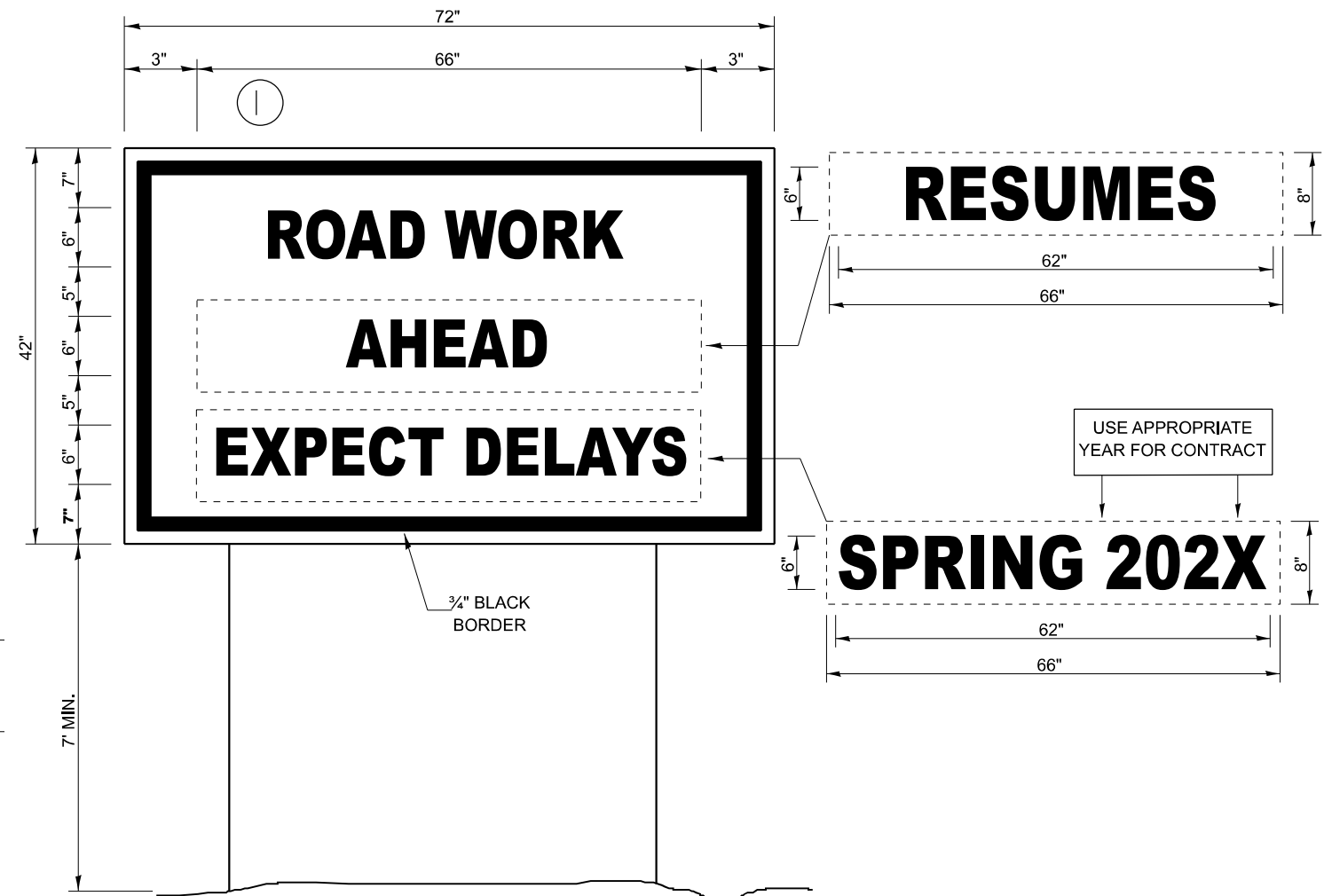
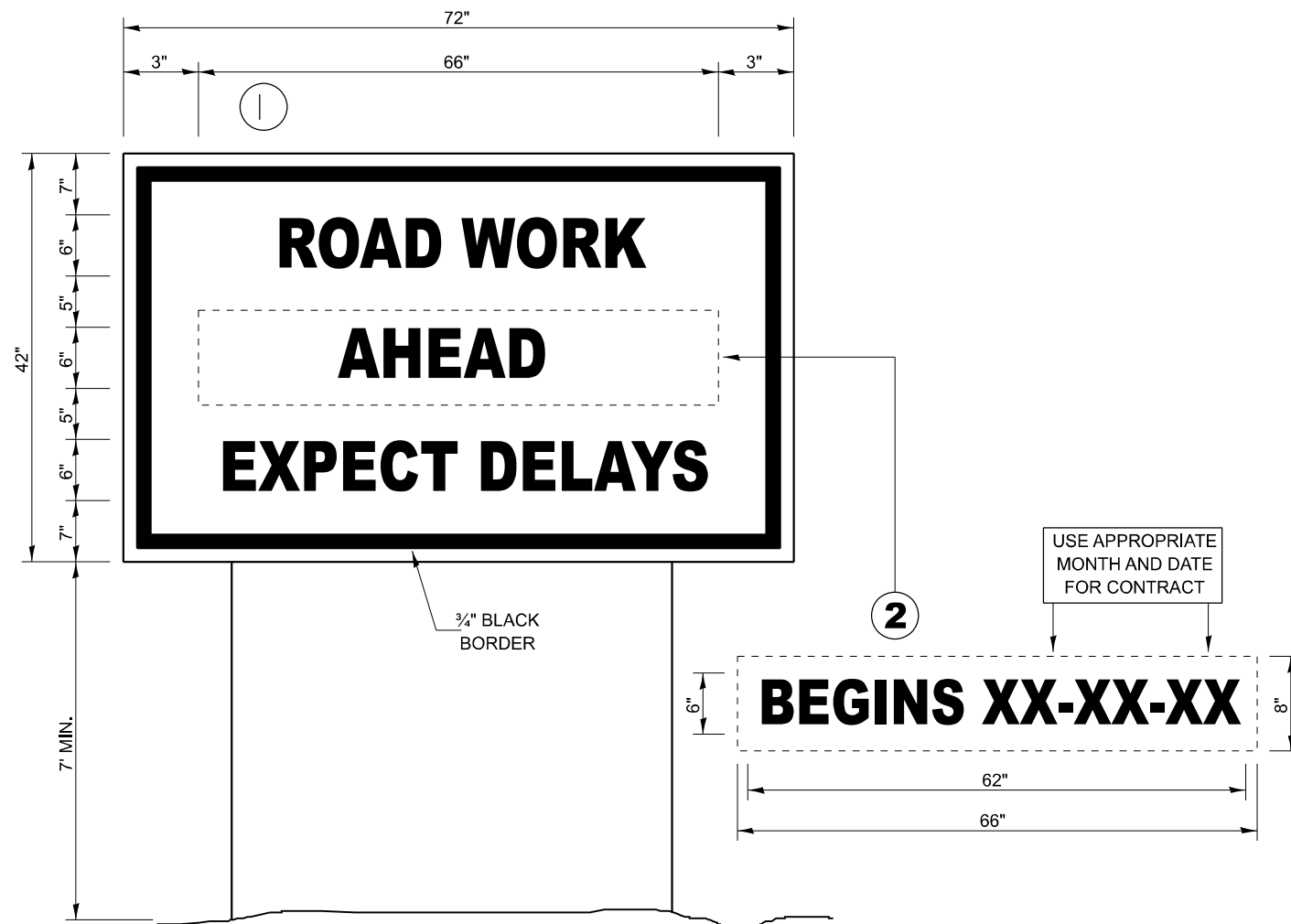
USER NAME = ronald.woodshank	DESIGNED - RW	REVISED -
DRAWN - RW	CHECKED - YP	REVISED -
PLOT SCALE = 100.0' / in.	DATE - 8/21/2023	REVISED -
PLOT DATE = 1/6/2024		

**STATE OF ILLINOIS
DEPARTMENT OF TRANSPORTATION**

TYPICAL PAVEMENT MARKING DETAILS

SCALE: SHEET 2 OF 2 SHEETS STA. TO STA.

F.A.S. RTE.	SECTION	COUNTY	TOTAL SHEETS	SHEET NO.
2245	006(22-B,22B-1)BP-2	BUREAU	13	12
CONTRACT NO. 66N93				
ILLINOIS FED. AID PROJECT				



TEMPORARY INFORMATION SIGNING

WINTER SHUT DOWN SIGNING

NOTES:

1. USE 6" D BLACK LETTERING ON FLOURESENT ORANGE BACKGROUND.
2. ERECT SIGNS AT LOCATIONS IN ADVANCE OF THE "ROAD CONSTRUCTION AHEAD" SIGNS AS DIRECTED BY THE ENGINEER.
3. ERECT SIGN ① WITH INSTALLED PANEL ② A MINIMUM OF ONE WEEK PRIOR TO THE START OF THE LANE CLOSURE.
4. REMOVE PANEL ② ON THAT DATE.
5. SEE SPECIAL PROVISION "TEMPORARY INFORMATION SIGNING" FOR ADDITIONAL INFORMATION.
6. WILL BE PAID FOR PER SQ FT AS "TEMPORARY INFORMATION SIGNING". EACH SIGN = 21 SQ FT AND THE DATE PANEL ② WILL NOT BE MEASURED SEPARATELY FOR PAYMENT.

MODEL: D:\in\it\...
FILE NAME: ...

USER NAME = ronald.woodshank	DESIGNED - RW	REVISED -
DRAWN - RW	CHECKED - YP	REVISED -
PLOT SCALE = 100.0 / 1 in.	DATE - 8/21/2023	REVISED -
PLOT DATE = 1/6/2024		

**STATE OF ILLINOIS
DEPARTMENT OF TRANSPORTATION**

TEMPORARY INFORMATION SIGNING

SCALE: SHEET 1 OF 1 SHEETS STA. TO STA.

F.A.S. RTE.	SECTION	COUNTY	TOTAL SHEETS	SHEET NO.
2245	006(22-B,22B-1)BP-2	BUREAU	13	13
CONTRACT NO. 66N93				
ILLINOIS FED. AID PROJECT				