

STATE OF ILLINOIS
DEPARTMENT OF TRANSPORTATION

F.A. RTE.	SECTION	COUNTY	TOTAL SHEETS	SHEET NO.
VAR	**	ROCK ISLAND	3	1
		ILLINOIS	CONTRACT NO. 64T22	

** (102,103)(20)(19,20)(19,9-15d,103)SR

PROPOSED HIGHWAY PLANS

ROUTES: VARIOUS

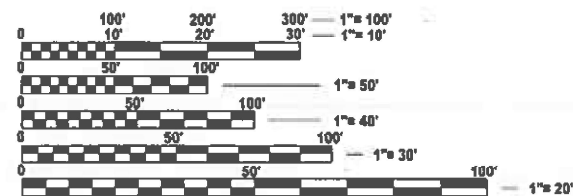
SECTION ((102,103)(20)(19,20)(19,9-15D,103))SR
AGGREGATE SHOULDER IMPROVEMENT
ROCK ISLAND COUNTY

C-92-067-24



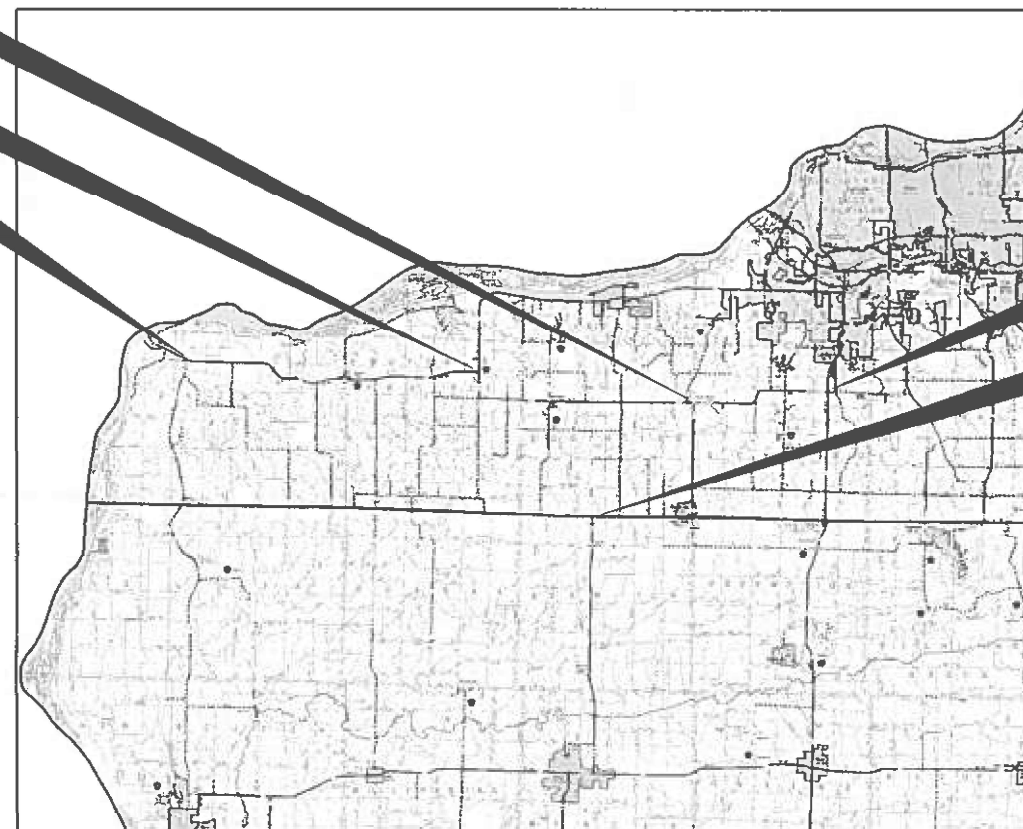
IL 192 ENDS
INTERSECTION OF IL 192 AND 94
IL 92 ENDS/ 192 BEGINS
INTERSECTION OF IL 92 AND 192
IL 92 STARTS
322ND ST

TOWNSHIP SECTIONS ()
BOWLING (11,10,9,8,7,18)
EDGINGTON (7,8,9,10,11,13,24,25,36,35,24,33)
BUFALLO PRAIRIE (7,8,9,10,11,12)
DRURY (6,7,8,9,10,11,12)



FULL SIZE PLANS HAVE BEEN PREPARED USING STANDARD ENGINEERING SCALES. REDUCED SIZED PLANS WILL NOT CONFORM TO STANDARD SCALES. IN MAKING MEASUREMENTS ON REDUCED PLANS, THE ABOVE SCALES MAY BE USED.

J.U.L.I.E.
JOINT UTILITY LOCATION INFORMATION FOR EXCAVATION
1-800-892-0123
OR 811



IL 94 BEGINS
INTERSECTION OF IL 94 AND US 67
IL 94 ENDS
180TH AVE

GROSS LENGTH = 328,416 FT. = 62.2 MILES
NET LENGTH = 164,208 FT. = 31.1 MILES

FIELD ENGINEER: STEPHANIE McMEEKAN 815-677-5282
OPERATION SUPERVISOR: PARIS FOTOS 309-236-3545

CONTRACT NO. 64T22

STATE OF ILLINOIS
DEPARTMENT OF TRANSPORTATION

SUBMITTED Jan 26 2024
Stephanie M. Travia
REGIONAL ENGINEER

March 22, 2024
Scott A. Etk
ENGINEER OF DESIGN AND ENVIRONMENT

March 22, 2024
Steph M. Travia
DIRECTOR OF HIGHWAYS PROJECT IMPLEMENTATION

PRINTED BY THE AUTHORITY
OF THE STATE OF ILLINOIS

INDEX OF SHEETS

- 1 COVER SHEET
- 2 INDEX OF SHEETS, STANDARDS, GENERAL NOTES, AND TYPICAL
- 3 SUMMARY OF QUANTITIES

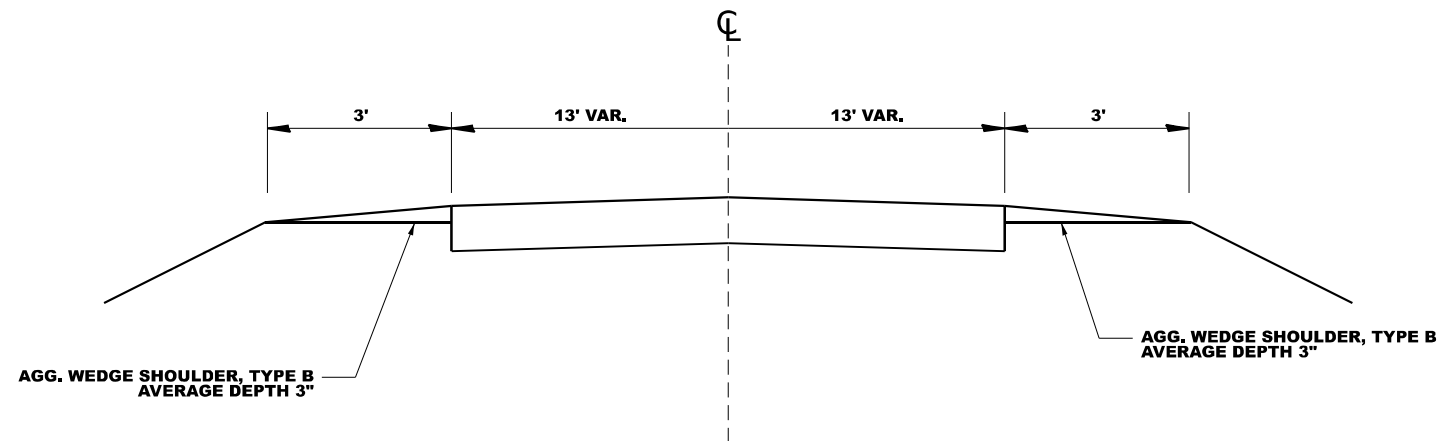
GENERAL NOTES

CONTACT THE OPERATIONS SUPERVISOR FOR ROCK ISLAND COUNTY FOR COORDINATION (PARIS FOTOS 309-236-3545)

HIGHWAY STANDARDS

- 701006-05 OFF-RD OPERATIONS, 2L, 2W, 15' (4.5M) TO 24' (600MM) FROM PAVEMENT EDGE
- 701306-04 LANE CLOSURE, 2L, 2W, SLOW MOVING OPERATIONS DAY ONLY, FOR SPEEDS ? 45 MPH
- 701901-09 TRAFFIC CONTROL DEVICES

TYPICAL SECTION IL 94, IL 92, IL 192



MODEL: D:_SMT_INEX
 FILE NAME: ...
 ...

USER NAME = Nicholas,Vock	DESIGNED -	REVISED -
	DRAWN -	REVISED -
PLOT SCALE = 0.1667' / in.	CHECKED -	REVISED -
PLOT DATE = 1/26/2024	DATE -	REVISED -

**STATE OF ILLINOIS
DEPARTMENT OF TRANSPORTATION**

INDEX OF SHEETS & HIGHWAY STANDARDS

SCALE: SHEET OF SHEETS STA. TO STA.

F.A. RTE.	SECTION	COUNTY	TOTAL SHEETS	SHEET NO.
	**	ROCK ISLAND	3	2
CONTRACT NO. 64T22				
ILLINOIS FED. AID PROJECT				

** (102,103)(20)(19,20)(19,9-15d, 103)SR

MODEL: D:_SUF_SCO
 FILE NAME: p:\projects\2024\Operations\Maintenance\Section\Stiphanie_McIntosh\Rock Island\Operations\Contract Maintenance\FY 2024\64T22_Agg.pics\Main\CAD\Drawings\64T22-03-SOO

SUMMARY OF QUANTITIES				CONSTR. CODE
				100% STATE
CODE NO.	ITEM	UNIT	TOTAL QUANTITY	NONE 0021
48102100	AGGREGATE WEDGE SHOULDER, TYPE B	TON	18891	18891
67100100	MOBILIZATION	L SUM	1	1
70100460	TRAFFIC CONTROL AND PROTECTION, STANDARD 701306	L SUM	1	1

USER NAME = Nicholas,Vock	DESIGNED -	REVISED -
	DRAWN -	REVISED -
PLOT SCALE = 0.1667" / in.	CHECKED -	REVISED -
PLOT DATE = 1/26/2024	DATE -	REVISED -

STATE OF ILLINOIS
DEPARTMENT OF TRANSPORTATION

SUMMARY OF QUANTITIES			
SCALE:	SHEET	OF	SHEETS

F.A. RTE.	SECTION	COUNTY	TOTAL SHEETS	SHEET NO.
VAR	**	ROCK ISLAND	3	1
CONTRACT NO. 64T22				
ILLINOIS FED. AID PROJECT				