

FOR INDEX OF SHEETS, SEE SHEET NO. 2
 FOR INDEX OF HIGHWAY STANDARDS, SEE SHEET NO. 2

04-26-2024 LETTING ITEM 004

STATE OF ILLINOIS

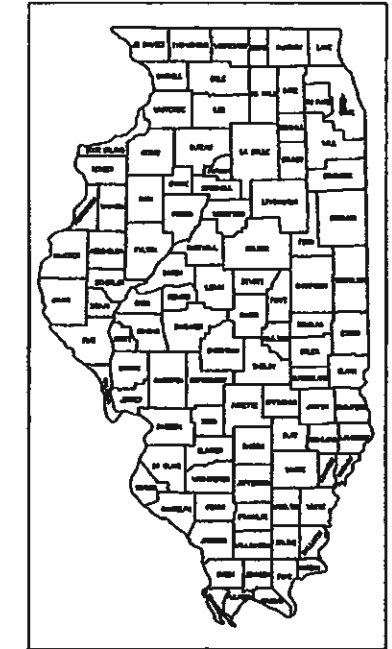
DEPARTMENT OF TRANSPORTATION

PLANS FOR PROPOSED FEDERAL AID HIGHWAY

**FAU ROUTE 2714 (25th AVENUE)
 WAVELAND AVENUE TO LAWRENCE AVENUE RESURFACING
 SECTION NO.: 23-000-89-00-RS
 PROJECT No.: SK5F (735)
 VILLAGE OF SCHILLER PARK
 COOK COUNTY**

ROUTE NO.	SECTION	COUNTY	TOTAL SHEETS	SHEET NO.
2714	23-000-89-00-RS	COOK	23	1

ALLIANCE PROJECT SK5F (735)
 CONTRACT NO.



LOCATION OF SECTION INDICATED THUS: [Symbol]

FUNCTIONAL CLASSIFICATION

MINOR ARTERIAL
TRAFFIC DATA

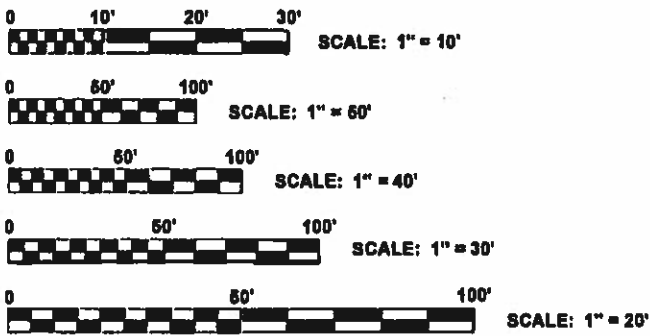
25TH AVENUE
 ADT (2022) = 13,600

POSTED SPEED LIMIT
 25th AVENUE = 30 MPH

DESIGN SPEED LIMIT
 25TH AVENUE = 30 MPH



◆ Civil Engineers 9933 Roosevelt Road
 ◆ Municipal Consultants Westchester, IL, 60154-2780
 ◆ Established 1911 Phone: 708-865-0300
 www.shancock.com



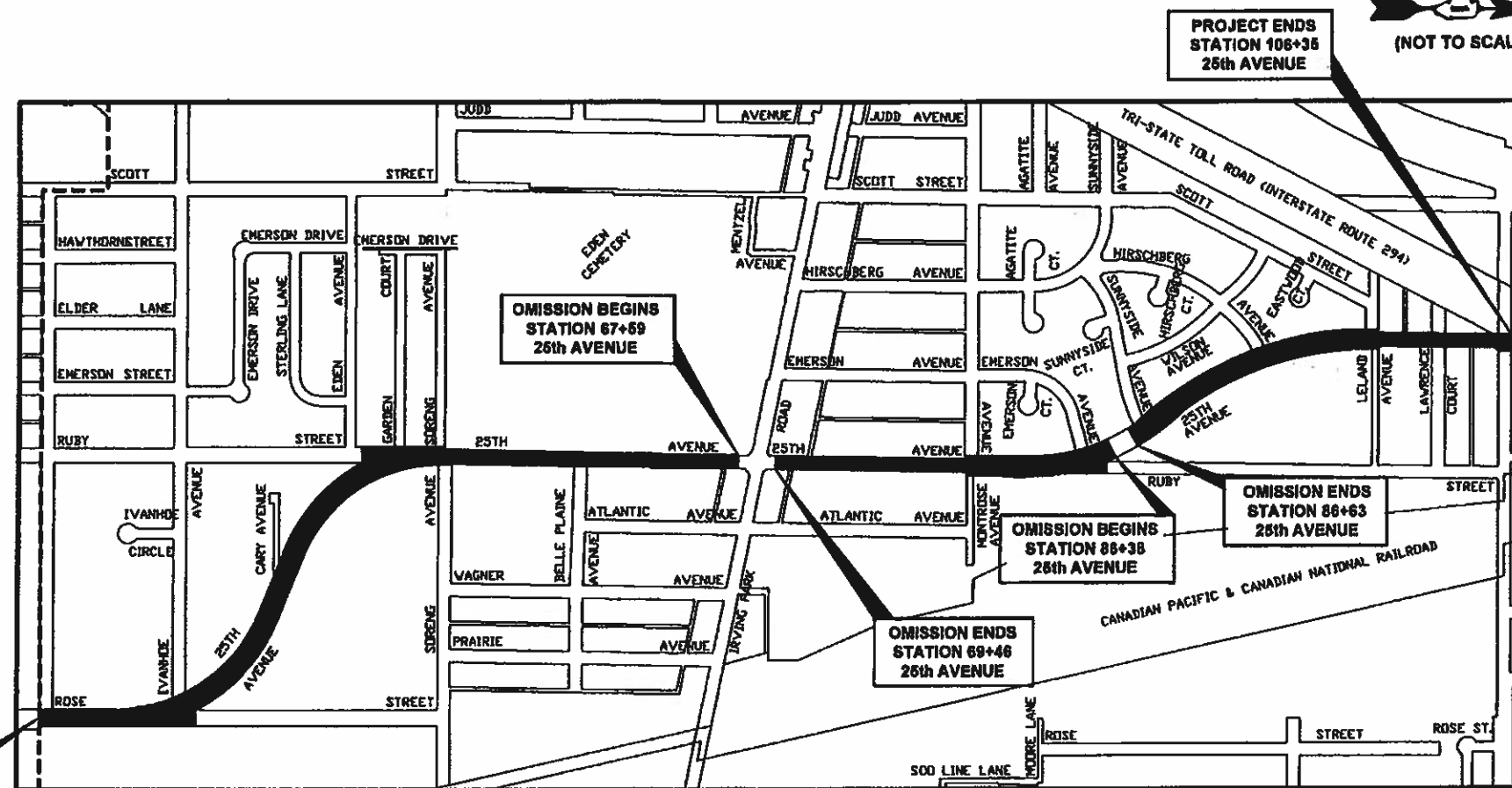
FULL SIZE PLANS HAVE BEEN PREPARED USING STANDARD ENGINEERING SCALES. REDUCED SIZED PLANS WILL NOT CONFORM TO STANDARD SCALES. IN MAKING MEASUREMENTS ON REDUCED PLANS, THE ABOVE SCALES MAY BE USED.

J.U.L.I.E.
 JOINT UTILITY LOCATION INFORMATION
 FOR EXCAVATION
 1-800-892-0123
 OR 811

CONTRACT NO. 61K29

PROJECT BEGINS
 STATION 26+60
 25th AVENUE

C-91-156-24



SECTIONS 16 & 21, TOWNSHIP 40, RANGE 12, 3RD PM
 LEYDEN TOWNSHIP

LOCATION MAP
 NOT TO SCALE

GROSS LENGTH OF IMPROVEMENT = 7,975 FT. = 1.510 MI
 . NET LENGTH OF IMPROVEMENT = 7,753 FT. = 1.470 MI.



(NOT TO SCALE)

STATE OF ILLINOIS
 ILLINOIS DEPARTMENT OF TRANSPORTATION
 DIVISION OF HIGHWAYS

APPROVED: 1-11-24
 VILLAGE OF SCHILLER PARK, PRESIDENT

PASSED: FEB 22 24
 DISTRICT 1 ENGINEER OF LOCAL ROADS & STREETS

RELEASED FOR BID
 BASED ON LIMITED REVIEW
 Feb 23 24
 REGIONAL ENGINEER



SIGNED: [Signature]
 DATE: 1-15-24 LICENSE EXPIRES 11-30-25

PRINTED BY THE AUTHORITY
 OF THE STATE OF ILLINOIS

FEDERAL AID PROGRAM ENGINEER: CARMEN E. RAMOS, P.E. SCHAUMBURG, IL

INDEX OF SHEETS

SHEET NO.	DESCRIPTION
1	COVER SHEET, LOCATION MAP
2	INDEX OF SHEETS, LEGEND OF SYMBOLS, AND I.D.O.T. STANDARD DRAWINGS
3	GENERAL NOTES AND COMMITMENTS
4-6	SUMMARY OF QUANTITIES
7-8	EXISTING AND PROPOSED TYPICAL SECTIONS
9-14	RESURFACING / PAVEMENT MARKING PLANS
15-16	DETECTOR LOOP REPLACEMENT PLAN
17	TRAFFIC CONTROL AND PROTECTION FOR SIDE ROADS, INTERSECTIONS, AND DRIVEWAYS (TC-10)
18	DISTRICT ONE TYPICAL PAVEMENT MARKINGS (TC-13)
19	SHORT TERM PAVEMENT MARKING LETTERS AND SYMBOLS(TC-16)
20	ARTERIAL ROAD INFORMATION SIGN (TC-22)
21	DETAILS FOR FRAME AND LID ADJUSTMENT WITH MILLING (BD08)
22	CURB OR CURB AND GUTTER REMOVAL AND REPLACEMENT (BD-24)
23	HMA TAPER AT EDGE OF P.C.C. PAVEMENT (BD-33)

I.D.O.T. STANDARD DRAWINGS

STANDARD NO.	TITLE OR DESCRIPTION
000001-08	STANDARD SYMBOLS, ABBREVIATIONS AND PATTERNS
424001-11	PERPENDICULAR CURB RAMPS FOR SIDEWALKS
424006-05	DIAGONAL CURB RAMPS FOR SIDEWALKS
424011-04	CORNER PARALLEL CURB RAMPS FOR SIDEWALKS
424021-06	DEPRESSED CORNER FOR SIDEWALKS
442201-03	CLASS C AND D PATCHES
606001-08	CONCRETE CURB TYPE B AND COMBINATION CONCRETE CURB AND GUTTER
701101-05	OFF-ROAD OPERATIONS, MULTILANE, 15' TO 24" FROM PAVEMENT EDGE
701427-05	LANE CLOSURE, MULTILANE, INTERMITTENT OR MOVING OPERATION, FOR SPEEDS LESS THAN 40 MPH
701606-10	URBAN SINGLE LANE CLOSURE, MULTILANE, 2W WITH MOUNTABLE MEDIAN
701701-10	URBAN LANE CLOSURE, MULTILANE INTERSECTION
701801-06	SIDEWALK, CORNER, OR CROSSWALK CLOSURE
701901-09	TRAFFIC CONTROL DEVICES

LEGEND OF SYMBOLS

(TO BE USED IN CONJUNCTION WITH I.D.O.T. STANDARD 000001-08)

SYMBOL	DESCRIPTION
	EXISTING HOT-MIX ASPHALT AREA
	EXISTING CONCRETE AREA
	EXISTING GRASS AREA
	EXISTING CONCRETE SIDEWALK OR DRIVEWAY REMOVAL
	PROPOSED CONCRETE AREA, 5" SIDEWALK, 7" DRIVEWAY, 8" DRIVEWAY
	EXISTING DOMESTIC WATER SERVICE BOX
	EXISTING FIRE HYDRANT
	EXISTING WATER VALVE BOX
	EXISTING WATER MAIN VALVE VAULT
	EXISTING STORM SEWER INLET
	EXISTING STORM SEWER CATCH BASIN
	EXISTING SEWER MANHOLE
	EXISTING STREET LIGHT POLE
	EXISTING POWER POLE
	EXISTING TRAFFIC SIGNAL POLE
	EXISTING TRAFFIC SIGNAL MAST ARM
	EXISTING HANDHOLE
	DOUBLE HANDHOLE
	EXISTING TRAFFIC SIGNAL OR STREET LIGHT CONTROLLER
	EXISTING TRAFFIC SIGNAL MANHOLE
	EXISTING CURB AND GUTTER
	PROPOSED COMBINATION CONCRETE CURB AND GUTTER REMOVAL AND REPLACEMENT

Feb 27, 2024 - 1:37pm

Drawing file: W:\Projects_by_Millage\Sublog\Para\B0018287 - 25TH AVE\index.dwg

HANCOCK ENGINEERING
Established 1911

Civil Engineers
Municipal Consultants

9900 Roosevelt Road
Waukegan, IL 60084-2700
Phone: 708-868-0800
www.hancock.com

DESIGNED - -	REVISED:
DRAWN - - ECW, DMM	REVISED:
CHECKED - -	REVISED:
DATE - - 12-29-23	REVISED:

**STATE OF ILLINOIS
DEPARTMENT OF TRANSPORTATION**

**INDEX OF SHEETS, LEGEND OF SYMBOLS,
AND I.D.O.T. STANDARD DRAWINGS**

SCALE: NONE | SHEET NO. 1 OF 1 SHEETS | STA. TO STA.

F.A.U. RTE.	SECTION	COUNTY	TOTAL SHEETS	SHEET NO.
2714	23-00089-00-RS	COOK	23	2
FED. ROAD DIST. NO. 1 ILLINOIS			CONTRACT NO. 61K29	
FED. AID PROJECT			E.H.E. PROJECT NO. 800-18-28701	

GENERAL NOTES

- ANY REFERENCE TO STANDARDS THROUGHOUT THE PLANS OR SPECIAL PROVISIONS SHALL BE INTERPRETED TO BE THE LATEST STANDARD OF THE ILLINOIS DEPARTMENT OF TRANSPORTATION AS SHOWN ON THE INDEX OF SHEETS IN THE PLANS. ALL CONSTRUCTION SHALL BE DONE IN ACCORDANCE WITH THE "STANDARD SPECIFICATIONS FOR ROAD AND BRIDGE CONSTRUCTION" ADOPTED JANUARY 1, 2022. THE LATEST EDITION OF THE "ILLINOIS MANUAL ON UNIFORM TRAFFIC CONTROL DEVICES FOR STREETS AND HIGHWAYS," "THE STANDARD SPECIFICATIONS FOR WATER AND SEWER MAIN CONSTRUCTION IN ILLINOIS" 8TH EDITION, AND THE "DETAILS" IN THE PLANS AND THE "SPECIAL PROVISIONS" INCLUDED IN THE CONTRACT DOCUMENTS. VILLAGE OF SCHILLER PARK MUNICIPAL CODE. THE METROPOLITAN WATER RECLAMATION DISTRICT OF GREATER CHICAGO (MWRD) WATERSHED MANAGEMENT ORDINANCE AND TECHNICAL GUIDANCE MANUAL. IN CASE OF CONFLICT BETWEEN THE APPLICABLE ORDINANCES NOTED, THE MORE STRINGENT SHALL TAKE PRECEDENCE AND SHALL CONTROL ALL CONSTRUCTION.
- BEFORE STARTING ANY EXCAVATION, THE CONTRACTOR SHALL CALL "JULIE" AT 811 FOR FIELD LOCATIONS OF BURIED ELECTRICAL, TELEPHONE AND GAS FACILITIES. (48 HOURS NOTIFICATION IS REQUIRED).
- THE LOCATIONS OF THE UNDERGROUND UTILITIES IF SHOWN ON THE PLANS HAVE BEEN OBTAINED BY FIELD SURVEYS AND SEARCHES OF AVAILABLE RECORDS. THE VILLAGE OF SCHILLER PARK, THE ILLINOIS DEPARTMENT OF TRANSPORTATION AND/OR OTHER OFFICES AND AGENCIES ASSOCIATED WITH THE DEVELOPMENT OF THESE PLANS DO NOT GUARANTEE THEIR ACCURACY OR COMPLETENESS. THE CONTRACTOR SHALL BE REQUIRED TO VERIFY THE EXACT LOCATION OF EACH FACILITY WITH THE UTILITY COMPANY, AND SHALL TAKE DUE CARE IN ALL PHASES OF THE CONSTRUCTION TO PROTECT ANY SUCH FACILITIES WHICH MAY BE AFFECTED BY THE WORK. ANY DAMAGE TO EXISTING UTILITIES DURING CONSTRUCTION ACTIVITIES SHALL BE REPAIRED OR REPLACED TO THE SATISFACTION OF THE ENGINEER.
- THE CONTRACTOR SHALL COORDINATE CONSTRUCTION ACTIVITIES WITH UTILITY COMPANIES AND THE VILLAGE OF SCHILLER PARK.
- ON ALL IMPROVEMENTS, THE FRAMES AND LIDS OF EXISTING CATCH BASINS, INLETS, MANHOLES, AND VALVE VAULTS WHICH ARE TO BE ABANDONED DUE TO CONSTRUCTION OF THIS IMPROVEMENT ARE TO REMAIN THE PROPERTY OF THE VILLAGE OF SCHILLER PARK AND BE SALVAGED. THE CONTRACTOR SHALL DELIVER FRAMES AND LIDS TO THE VILLAGE OF SCHILLER PARK WATER DEPT. LOCATED AT 9248 IRVING PARK ROAD, SCHILLER PARK, IL 60176 (847) 678-2550.
- THE WORD "WATER", "SANITARY", OR "STORM" SHALL BE CAST INTO THE LID OF EACH RESPECTIVE MANHOLE OR VALVE VAULT
- THE CONTRACTOR SHALL CONDUCT OPERATIONS AS TO MAINTAIN AT ALL TIMES FLOW THROUGH EXISTING STORM AND SANITARY SEWER SYSTEMS. THE CONTRACTOR SHALL ALSO PROVIDE AND MAINTAIN AN EFFICIENT PUMPING PLANT IF NECESSARY AND A TEMPORARY OUTLET AND BE PREPARED AT ALL TIMES TO DISPOSE OF THE WATER COLLECTED IN A SAFE MANNER WITHOUT DAMAGE OF ANY KIND TO ADJACENT PROPERTIES. THE ENDS OF EXISTING DRAINAGE LINES THAT ARE NOT TO BE INCORPORATED INTO THE PROJECT SHALL BE SEALED AS SPECIFIED IN THE SPECIAL PROVISIONS. EXISTING STRUCTURES ARE TO BE INSPECTED BEFORE CONSTRUCTION STARTS - ANY ACCUMULATION OF MATERIAL IN THE STRUCTURE DUE TO CONSTRUCTION OPERATIONS SHALL BE REMOVED BY THE CONTRACTOR.
- CONTRACTOR SHALL TAKE PRECAUTION BY PRESERVING EXISTING TREES WITHIN THE RIGHT OF WAY. IF ANY DAMAGE OCCURS, TREE SHALL BE REPLACED IN KIND PER ARTICLE 201.07 REPAIR OR REPLACEMENT OF EXISTING PLANT MATERIAL REQUIREMENTS STATED HEREIN.
- WHEN REMOVING PAVEMENT AND/OR OTHER STRUCTURES, THE CONTRACTOR SHALL NOT USE ANY TYPE OF CONCRETE BREAKERS SUCH AS DROP HAMMERS, THAT MIGHT DAMAGE UNDERGROUND PUBLIC OR PRIVATE UTILITIES.
- THE CONTRACTOR SHALL SAW CUT ASPHALT PAVEMENT AS INDICATED ON THE PLANS TO SEPARATE THE EXISTING PAVEMENT TO BE REMOVED BY APPROVED MEANS OR AN APPROVED CONCRETE SAW TO A DEPTH AS DIRECTED BY THE ENGINEER. SUITABLE GUIDELINES OR DEVICES SHALL BE USED TO ASSURE CUTTING A NEAT, STRAIGHT LINE AS SHOWN ON THE PLANS. CARE SHALL BE TAKEN BY THE CONTRACTOR AS NOT TO DAMAGE THE REMAINING PAVEMENT DIRECTLY ADJACENT TO THE PAVEMENT TO BE REMOVED. ANY DAMAGE TO THE EXISTING PAVEMENT RESULTING FROM PAVEMENT REMOVAL OPERATIONS SHALL BE REPAIRED TO THE SATISFACTION OF THE ENGINEER.
- THE CONTRACTOR WILL NOT BE ALLOWED TO SET UP A YARD OR FIELD OFFICE ON STATE OR VILLAGE PROPERTY WITHOUT WRITTEN PERMISSION FROM THE ENGINEER.
- A BUTT JOINT WILL BE INSTALLED AT THE ENDS OF ALL RESURFACING (WHERE RESURFACING MEETS EXISTING PAVEMENT) IN ACCORDANCE WITH THE "BUTT JOINT AND HMA TAPER DETAILS" SHEET INCLUDED IN THE PLANS, UNLESS OTHERWISE SPECIFIED.
- THE CONTRACTOR WILL BE REQUIRED TO SCHEDULE THEIR OPERATIONS SO THAT NO SECTIONS OF PAVEMENT ALONG THE CENTERLINE WILL HAVE A COLD JOINT OVERNIGHT.
- LOCATIONS OF PATCHES WILL BE DETERMINED IN THE FIELD BY ENGINEER. CLASS D PATCHES LOCATED WITHIN THE THROUGH LANES SHALL BE MADE ACCESSIBLE TO TRAFFIC AT THE END OF EACH WORK DAY.
- PAVEMENT PATCHING SHALL BE STAGED TO MAINTAIN TWO-WAY TRAFFIC AT ALL TIMES.
- THE CONTRACTOR SHALL MAINTAIN ACCESS FOR EMERGENCY VEHICLES AND GARBAGE TRUCKS AT ALL TIMES. IF THE GARBAGE TRUCKS ARE NOT ABLE TO HAVE ACCESS TO ALL OF THE PROPERTIES WITHIN THE PROJECT LIMITS, THEN THE CONTRACTOR SHALL PLACE ANY GARBAGE THAT IS AFFECTED IN A LOCATION WHERE THE GARBAGE TRUCKS CAN PICK IT UP. THE CONTRACTOR SHALL RETURN THE GARBAGE CANS TO THE PARKWAY OF THE RESPECTIVE PROPERTY BY THE END OF THE DAY.
- THE CONTRACTOR SHALL TAKE PRECAUTIONS SO AS NOT TO DAMAGE EXISTING SIDEWALKS, DRIVEWAYS, AND PAVEMENTS OUTSIDE THE LIMITS OF RESTORATION. THE GENERAL LIMITS OF RESTORATION ARE SHOWN ON THE PLANS. THE ENGINEER WILL MARK OUT THE EXACT LIMITS OF REMOVAL FOR THESE ITEMS PRIOR TO THE COMMENCEMENT OF WORK. THE CONTRACTOR SHALL RESTORE ANY DAMAGE TO SIDEWALKS, DRIVEWAYS, AND PAVEMENTS OUTSIDE OF THESE LIMITS TO THE SATISFACTION OF THE ENGINEER.
- TWO WEEKS PRIOR TO REPLACEMENT OF PERMANENT PAVEMENT MARKINGS, THE ENGINEER SHALL CONTACT EMAD ALHUSSEINI, AREA TRAFFIC ENGINEER AT EMAD.ALHUSSEINI@ILLINOIS.GOV
- THE CONTRACTOR SHALL CONTACT KALPANA KANNAN, THE DISTRICT ONE TRAFFIC CONTROL SUPERVISOR FOR ARTERIALS AT KALPANAKANNAN-HOSADURGA@ILLINOIS.GOV AT LEAST 72 HOURS IN ADVANCE OF BEGINNING WORK.
- BEFORE BEGINNING ANY WORK, THE CONTRACTOR SHALL RETAIN AND RECORD FOR FUTURE REFERENCE ALL EXISTING PAVEMENT MARKING LINES AND RRPM IN ORDER THAT THESE LOCATIONS CAN BE RE-ESTABLISHED FOR STRIPING. EXACT LOCATIONS OF ALL PAVEMENT MARKINGS SHALL BE AS DIRECTED BY THE ENGINEER.

COMMITMENTS

- CONTRACTOR SHALL SUBMIT FAA FORM 7460 AT LEAST 45 DAYS PRIOR TO CONSTRUCTION BEGINNING.

Feb 14, 2024 - 1:29pm

Drawing file: W:\Projects_by_Village\Schiller Park\B0018287 - 25TH AVE\Index.dwg



CMI Engineers
 9988 Roosevelt Road
 Westchester, IL, 60184-2780
 Phone: 708-866-0800
 www.hancock.com
 Municipal Consultants
 Established 1911

DESIGNED	--	-	REVISED:
DRAWN	--	ECW, DMM	REVISED:
CHECKED	--	-	REVISED:
DATE	--	12-29-23	REVISED:

STATE OF ILLINOIS
DEPARTMENT OF TRANSPORTATION

GENERAL NOTES AND COMMITMENTS

SCALE: NONE SHEET NO. 1 OF 1 SHEETS STA. TO STA.

F.A.U. RTE.	SECTION	COUNTY	TOTAL SHEETS	SHEET NO.
2714	23-00089-00-RS	COOK	23	3
CONTRACT NO.			61K29	
FED. ROAD DIST. NO. 1 ILLINOIS			FED. AID PROJECT	

S.I.	Code No.	Item	Unit	Total Quantity	CONSTRUCTION CODE	
					STP FUNDS	
					80% FEDERAL / 20% LOCAL	
					RESURFACING	TRAINEES
					0004	0042
					URBAN	URBAN
X	21101615	TOPSOIL FURNISH AND PLACE, 4"	SQ YD	1000	1000	
X	25000400	NITROGEN FERTILIZER NUTRIENT	POUND	10	10	
X	25000500	PHOSPHORUS FERTILIZER NUTRIENT	POUND	10	10	
X	25000600	POTASSIUM FERTILIZER NUTRIENT	POUND	10	10	
X	25200110	SODDING, SALT TOLERANT	SQ YD	1000	1000	
X	25200200	SUPPLEMENTAL WATERING	UNIT	2	2	
	40201000	AGGREGATE FOR TEMPORARY ACCESS	TON	100	100	
	40600290	BITUMINOUS MATERIALS (TACK COAT)	POUND	27800	27800	
	40600400	MIXTURES FOR CRACKS, JOINTS AND FLANGEWAYS	TON	175	175	
	40603200	POLYMERIZED HOT-MIX ASPHALT BINDER COURSE, IL-4.75 N50	TON	2300	2300	
	40604172	POLYMERIZED HOT-MIX ASPHALT SURFACE COURSE, IL-9.5, MIX "E", N70	TON	4100	4100	
	42001300	PROTECTIVE COAT	SQ YD	1560	1560	
	42300400	PORTLAND CEMENT CONCRETE DRIVEWAY PAVEMENT, 8 INCH	SQ YD	450	450	
	42400200	PORTLAND CEMENT CONCRETE SIDEWALK 5 INCH	SQ FT	9500	9500	
	42400800	DETECTABLE WARNINGS	SQ FT	450	450	
	44000200	DRIVEWAY PAVEMENT REMOVAL	SQ YD	450	450	

SI DENOTES SPECIALTY ITEM

Drawing file: W:\Projects_by_Village\Schiller Park\8018287 - 25TH AVE\SUMMARY.dwg Feb 09, 2024 - 11:15am



♦ CMI Engineers
 ♦ Municipal Consultants
 ♦ Established 1911

9700 Roosevelt Road
 Wheeling, IL 40164-5782
 Phone: 708/664-0800
 www.hancock.com

DESIGNED -- -	REVISED:
DRAWN -- ECW, DMM	REVISED:
CHECKED -- -	REVISED:
DATE -- 12-29-23	REVISED:

STATE OF ILLINOIS
DEPARTMENT OF TRANSPORTATION

SUMMARY OF QUANTITIES

SCALE: SHEET NO. 1 OF 3 SHEETS STA. TO STA.

F.A.U. RTE.	SECTION	COUNTY	TOTAL SHEETS	SHEET NO.
2714	23-00089-00-RS	COOK	23	4
FED. ROAD DIST. NO. 1 ILLINOIS			CONTRACT NO. 61K29	
FED. AID PROJECT				

S.I.	Code No.	Item	Unit	Total Quantity	CONSTRUCTION CODE	
					STP FUNDS	
					80% FEDERAL / 20% LOCAL	
					RESURFACING	TRAINEES
	0004	0042				
	URBAN	URBAN				
	44000600	SIDEWALK REMOVAL	SQ FT	11000	11000	
	44201765	CLASS D PATCHES, TYPE II, 10 INCH	SQ YD	1200	1200	
	44201769	CLASS D PATCHES, TYPE III, 10 INCH	SQ YD	100	100	
	60252800	CATCH BASIN TO BE RECONSTRUCTED	EACH	6	6	
	60257900	MANHOLE TO BE RECONSTRUCTED	EACH	5	5	
	60404800	FRAMES AND GRATES, TYPE 11	EACH	20	20	
	60406000	FRAMES AND LIDS, TYPE 1, OPEN LID	EACH	2	2	
	60406100	FRAMES AND LIDS, TYPE 1, CLOSED LID	EACH	5	5	
	60300305	FRAMES AND LIDS TO BE ADJUSTED	EACH	105	105	
	67100100	MOBILIZATION	L SUM	1	1	
	70102625	TRAFFIC CONTROL AND PROTECTION, STANDARD 701606	L SUM	1	1	
	70102634	TRAFFIC CONTROL AND PROTECTION, STANDARD 701611	L SUM	1	1	
	70102640	TRAFFIC CONTROL AND PROTECTION, STANDARD 701801	L SUM	1	1	
	70300100	SHORT TERM PAVEMENT MARKING	FOOT	2400	2400	
	70300150	SHORT TERM PAVEMENT MARKING REMOVAL	SQ FT	1000	1000	
	70300211	TEMPORARY PAVEMENT MARKING - LETTERS AND SYMBOLS - PAINT	SQ FT	175	175	

SI DENOTES SPECIALTY ITEM

Drawing file: W:\Projects_by_Village\Schiller Park\80018287 - 25TH AVE\SUMMARY.dwg Feb 09, 2024 - 11:15am



CMI Engineers
 Municipal Consultants
 Established 1911
 9700 Roosevelt Road
 Wheeling, IL 60154-5782
 Phone: 708/664-0800
 www.hancock.com

DESIGNED --	REVISOR:
DRAWN -- ECW, DMM	REVISION:
CHECKED --	REVISION:
DATE -- 12-29-23	REVISION:

**STATE OF ILLINOIS
DEPARTMENT OF TRANSPORTATION**

SUMMARY OF QUANTITIES

SCALE: SHEET NO. 2 OF 3 SHEETS STA. TO STA.

F.A.U. RTE.	SECTION	COUNTY	TOTAL SHEETS	SHEET NO.
2714	23-00089-00-RS	COOK	23	5
FED. ROAD DIST. NO. 1 ILLINOIS			CONTRACT NO. 61K29	
FED. AID PROJECT				

S.I.	Code No.	Item	Unit	Total Quantity	CONSTRUCTION CODE	
					STP FUNDS	
					80% FEDERAL / 20% LOCAL	
					RESURFACING	TRAINEES
	0004	0042				
	URBAN	URBAN				
	70300221	TEMPORARY PAVEMENT MARKING LINE - 4" - PAINT	FOOT	19000	19000	
	70300241	TEMPORARY PAVEMENT MARKING LINE - 6" - PAINT	FOOT	1100	1100	
	70300261	TEMPORARY PAVEMENT MARKING LINE - 12" - PAINT	FOOT	500	500	
	70300281	TEMPORARY PAVEMENT MARKING LINE - 24" - PAINT	FOOT	500	500	
	70307160	TEMPORARY PAVEMENT MARKING - LINE 12" - TYPE IV TAPE	FOOT	500	500	
X	78000100	THERMOPLASTIC PAVEMENT MARKING - LETTERS AND SYMBOLS	SQ FT	175	175	
X	78000200	THERMOPLASTIC PAVEMENT MARKING LINE - 4"	FOOT	19000	19000	
X	78000400	THERMOPLASTIC PAVEMENT MARKING LINE - 6"	FOOT	1100	1100	
X	78000600	THERMOPLASTIC PAVEMENT MARKING LINE - 12"	FOOT	500	500	
X	78000650	THERMOPLASTIC PAVEMENT MARKING LINE - 24"	FOOT	500	500	
X	X8860105	DETECTOR LOOP REPLACEMENT	FOOT	250	250	
	Z0030850	TEMPORARY INFORMATION SIGNING	SQ FT	55	55	
	Z0076600	TRAINEES	HOOR	500		500
	Z0076604	TRAINEES TRAINING PROGRAM GRADUATE	HOOR	500		500
	X4400100	PORTLAND CEMENT CONCRETE SURFACE REMOVAL (VARIABLE DEPTH)	SQ YD	16500	16500	
	X4400501	COMBINATION CURB AND GUTTER REMOVAL AND REPLACEMENT LESS THAN OR EQUAL TO 10 FEET	FOOT	600	600	
	X4400503	COMBINATION CURB AND GUTTER REMOVAL AND REPLACEMENT GREATER THAN 10 FEET	FOOT	2500	2500	

SI DENOTES SPECIALTY ITEM



9988 Roosevelt Road
Westchester, IL 60154-0780
Phone: 708-665-0900
www.hancock.com

◆ Civil Engineers
◆ Municipal Consultants
◆ Established 1911

DESIGNED -- -	REVISED:
DRAWN -- ECW, DMM	REVISED:
CHECKED -- -	REVISED:
DATE -- 12-29-23	REVISED:

**STATE OF ILLINOIS
DEPARTMENT OF TRANSPORTATION**

SUMMARY OF QUANTITIES

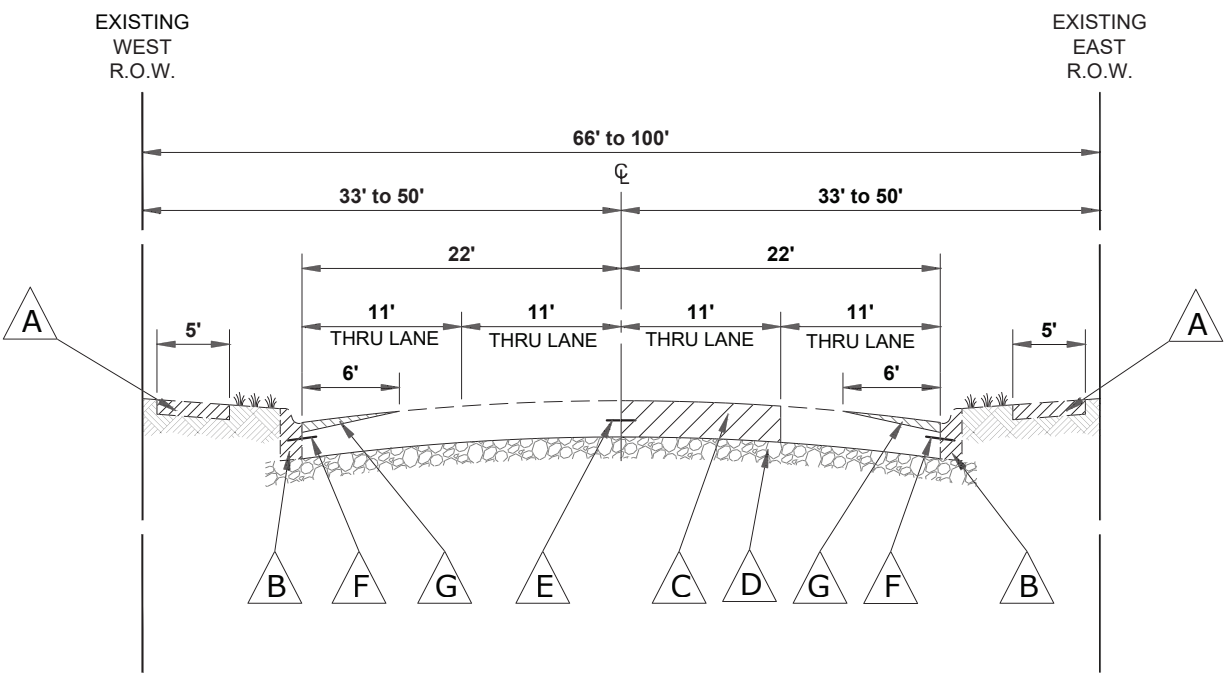
SCALE: SHEET NO. 3 OF 3 SHEETS STA. TO STA.

F.A.U. RTE.	SECTION	COUNTY	TOTAL SHEETS	SHEET NO.
2714	23-00089-00-RS	COOK	23	6
FED. ROAD DIST. NO. 1 ILLINOIS			CONTRACT NO. 61K29	
FED. AID PROJECT				

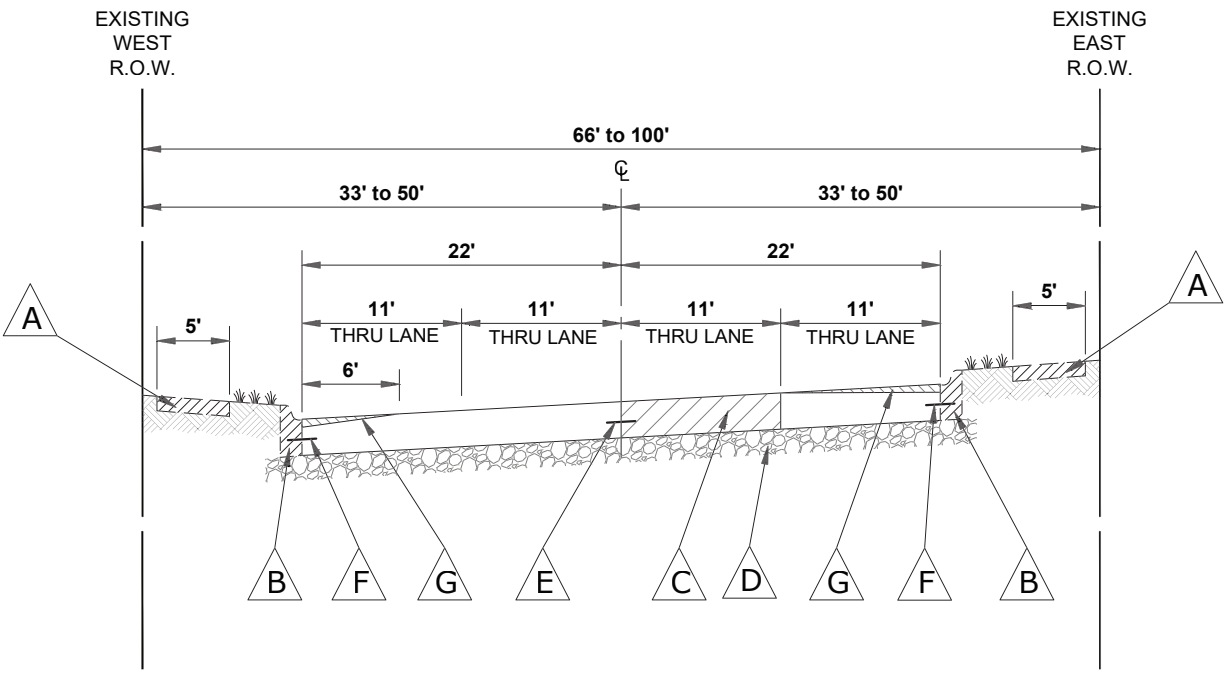
EXISTING LEGEND OF SYMBOLS

SYMBOL	DESCRIPTION
	EXISTING PORTLAND CEMENT CONCRETE SIDEWALK, 5"
	EXISTING COMBINATION CONCRETE CURB & GUTTER, TYPE B-6.18 OR AS NOTED
	EXISTING PORTLAND CEMENT CONCRETE PAVEMENT, 10"
	EXISTING SUB-BASE GRANULAR MATERIAL, 4"
	EXISTING #5 TIE BARS SPACED 2'-6" O.C.
	EXISTING #4 TIE BARS SPACED 2'-6" O.C.
	PORTLAND CEMENT CONCRETE SURFACE REMOVAL, VARIABLE DEPTH
	ITEMS TO BE REMOVED (LOCATION TO BE DETERMINED IN THE FIELD)

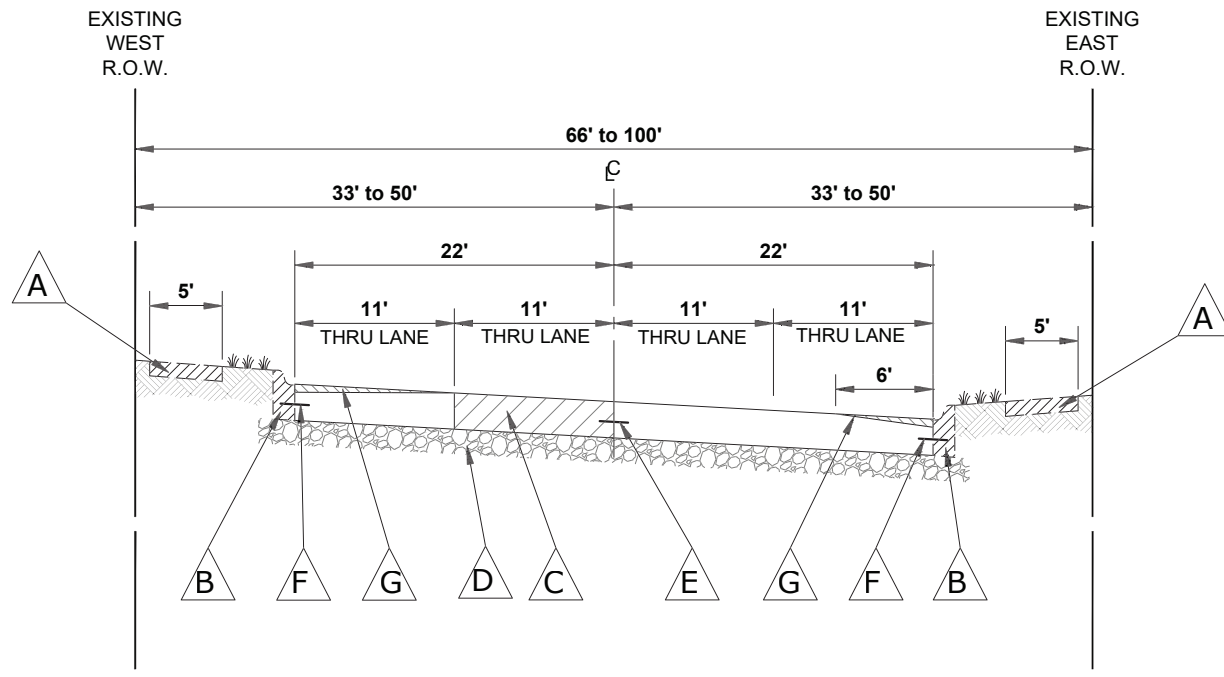
NOTE: LOCATION OF PATCHING, SIDEWALK R&R, AND CURB AND GUTTER R&R TO BE DETERMINED IN THE FIELD BY THE ENGINEER.



EXISTING TYPICAL SECTION
25th AVENUE
(STATION 26+60 TO STATION 27+85)
(STATION 54+16 TO STATION 67+59)
(OMISSION STATION 67+59 TO STATION 69+46)
(STATION 69+46 TO STATION 77+50)
(STATION 102+73 TO STATION 106+35)



EXISTING TYPICAL SECTION
25th AVENUE
(STATION 27+85 TO STATION 41+32)
(STATION 77+50 TO STATION 86+38)
(OMISSION STATION 86+38 TO STATION 86+63)
(STATION 86+63 TO STATION 91+23)



EXISTING TYPICAL SECTION
25th AVENUE
(STATION 41+32 TO STATION 54+16)
(STATION 91+23 TO STATION 102+73)

Drawing file: W:\Projects_by_Village\Schiller_Park\80018287 - 25th Ave Typ Sect_2023.dwg Feb 02, 2024 - 2:47pm

HANCOCK ENGINEERING
 100+ Years of Experience
 Civil Engineers
 Municipal Consultants
 Established 1911
 9938 Roosevelt Road
 Wheeling, IL 60154-9780
 Phone: 708-665-0300
 www.hancock.com

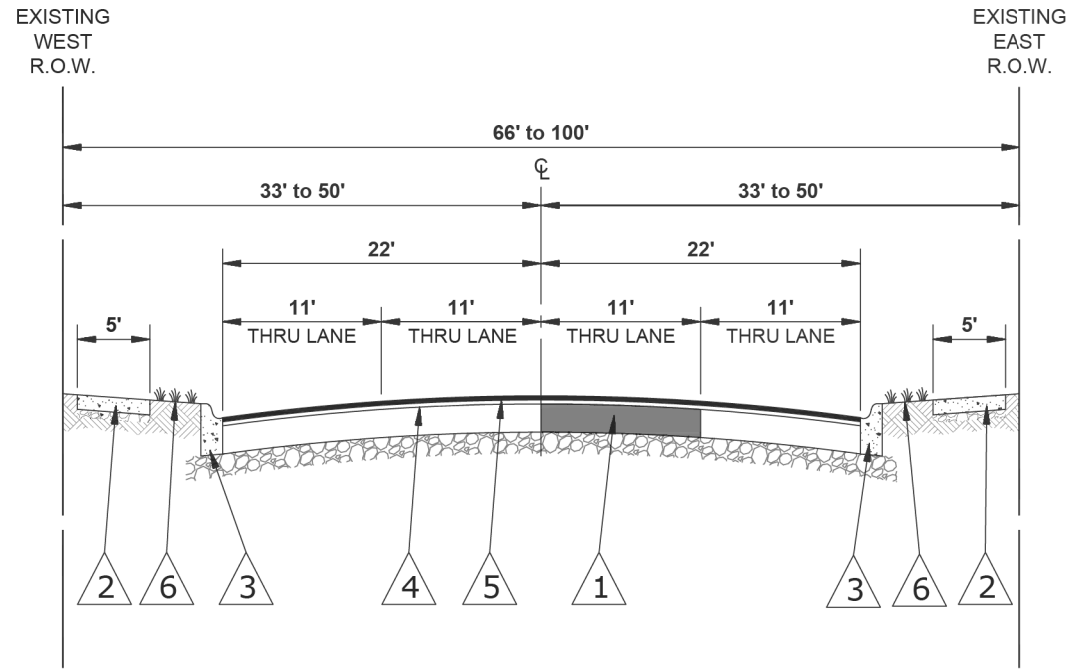
DESIGNED - -	REVISED:
DRAWN - ECW, DMM	REVISED:
CHECKED - -	REVISED:
DATE - 12-29-23	REVISED:

STATE OF ILLINOIS
DEPARTMENT OF TRANSPORTATION

EXISTING TYPICAL SECTIONS

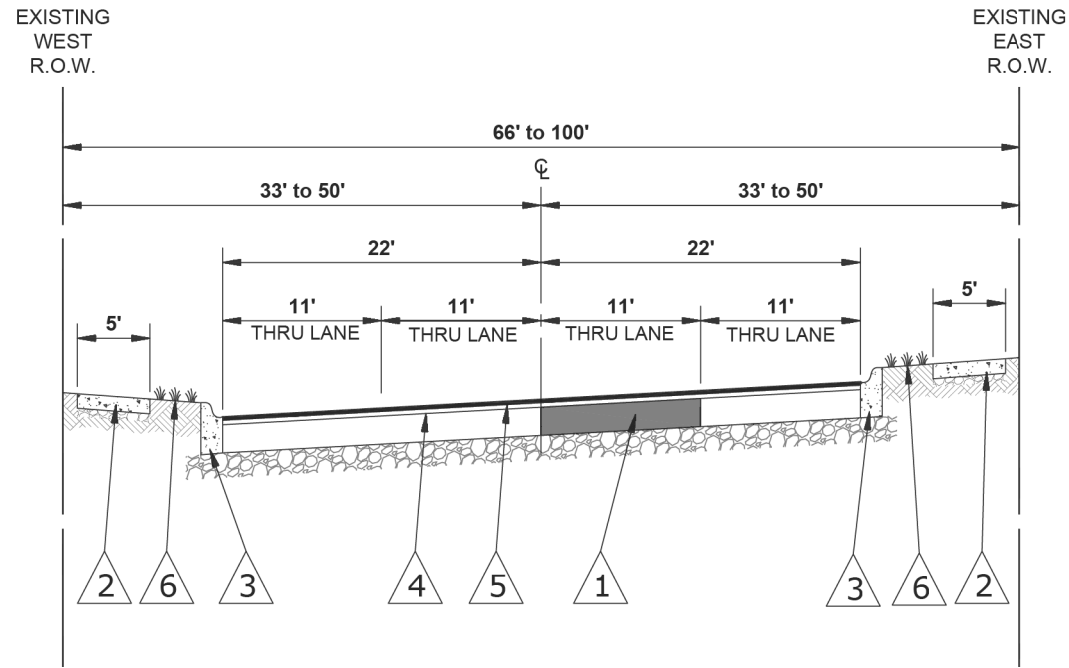
SCALE: NONE SHEET NO. 1 OF 2 SHEETS STA. TO STA.

F.A.U. RTE.	SECTION	COUNTY	TOTAL SHEETS	SHEET NO.
2714	23-00089-00-RS	COOK	23	7
FED. ROAD DIST. NO. 1 ILLINOIS			CONTRACT NO. 61K29	
FED. AID PROJECT			E.H.E. PROJECT NO. 800-18-28701	



PROPOSED TYPICAL SECTION

25th AVENUE
 (STATION 26+60 TO STATION 27+85)
 (STATION 54+16 TO STATION 67+59)
 (OMISSION STATION 67+59 TO STATION 69+46)
 (STATION 69+46 TO STATION 77+50)
 (STATION 102+73 TO STATION 106+35)

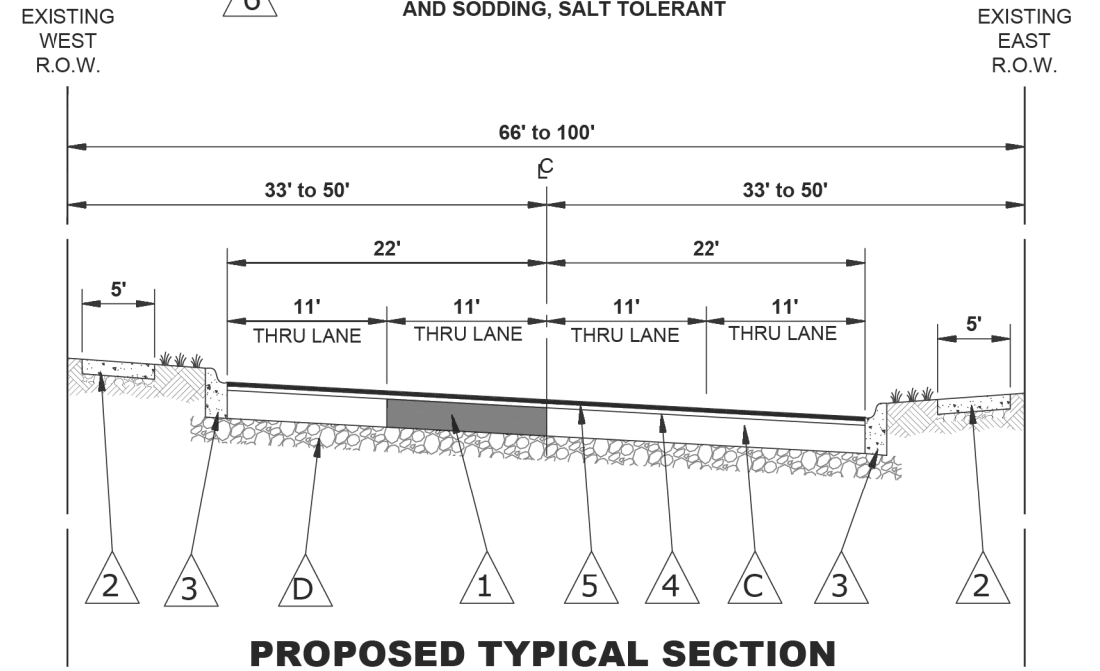


PROPOSED TYPICAL SECTION

25th AVENUE
 (STATION 27+85 TO STATION 41+32)
 (STATION 77+50 TO STATION 86+38)
 (OMISSION STATION 86+38 TO STATION 86+63)
 (STATION 86+63 TO STATION 91+23)

PROPOSED LEGEND OF SYMBOLS

SYMBOL	DESCRIPTION
1	CLASS D PATCH, 10"
2	PROPOSED INTERMITTENT PORTLAND CEMENT CONCRETE SIDEWALK, 5"
3	PROPOSED INTERMITTENT COMBINATION CONCRETE CURB & GUTTER REMOVAL & REPLACEMENT
4	POLYMERIZED HOT-MIX ASPHALT BINDER COURSE, IL-4.75, N50, 1"
5	POLYMERIZED HOT-MIX ASPHALT SURFACE COURSE, IL-9.5, MIXTURE E, N70, 1 3/4"
6	TOPSOIL FURNISH AND PLACE AND SODDING, SALT TOLERANT



PROPOSED TYPICAL SECTION

25th AVENUE
 (STATION 41+32 TO STATION 54+16)
 (STATION 91+23 TO STATION 102+73)

HOT-MIX ASPHALT MIXTURE REQUIREMENTS		
MIXTURE TYPE	AIR VOIDS @ Ndes	QMP
PAVEMENT RESURFACING		
POLYMERIZED HOT-MIX ASPHALT SURFACE COURSE, IL-9.5 MIX "E", N70, 1 3/4"	4% @ 70 Gyr.	LR1030-2
POLYMERIZED HOT-MIX ASPHALT BINDER COURSE, IL-4.75, N50, 1"	3.5% @ 50 Gyr.	LR1030-2
CLASS D PATCHES		
HOT-MIX ASPHALT BINDER COURSE, IL 19.0, N70, 10"	4% @ 70 Gyr.	LR1030-2
QMP DESIGNATION: QUALITY CONTROL/QUALITY ASSURANCE (QC/QA) PER LR1030-2.		

THE UNIT WEIGHT USED TO CALCULATE ALL HMA SURFACE MIXTURE QUANTITIES IS 112LG/SQ YD/IN.

THE "AC TYPE" FOR POLYMERIZED HMA MIXTURES SHALL BE "SBS/SBR PG 76-22" AND FOR NON-POLYMERIZED HMA THE "AC TYPE" SHALL BE "PG64-22" UNLESS MODIFIED BY RECYCLED MATERIAL SPECIFICATIONS.

Drawing file: W:\Projects_by_Village\Schiller Park\80018287 - 25TH AVE\Typ_Sect_2023.dwg Feb 02, 2024 - 2:48pm

HANCOCK ENGINEERING
 100+ Years of Excellence
 Civil Engineers
 Municipal Consultants
 Established 1911
 9933 Roosevelt Road
 Westchester, IL 60154-2780
 Phone: 708-865-0300
 www.hancock.com

DESIGNED - -	REVISED:
DRAWN - ECW, DMM	REVISED:
CHECKED - -	REVISED:
DATE - 12-29-23	REVISED:

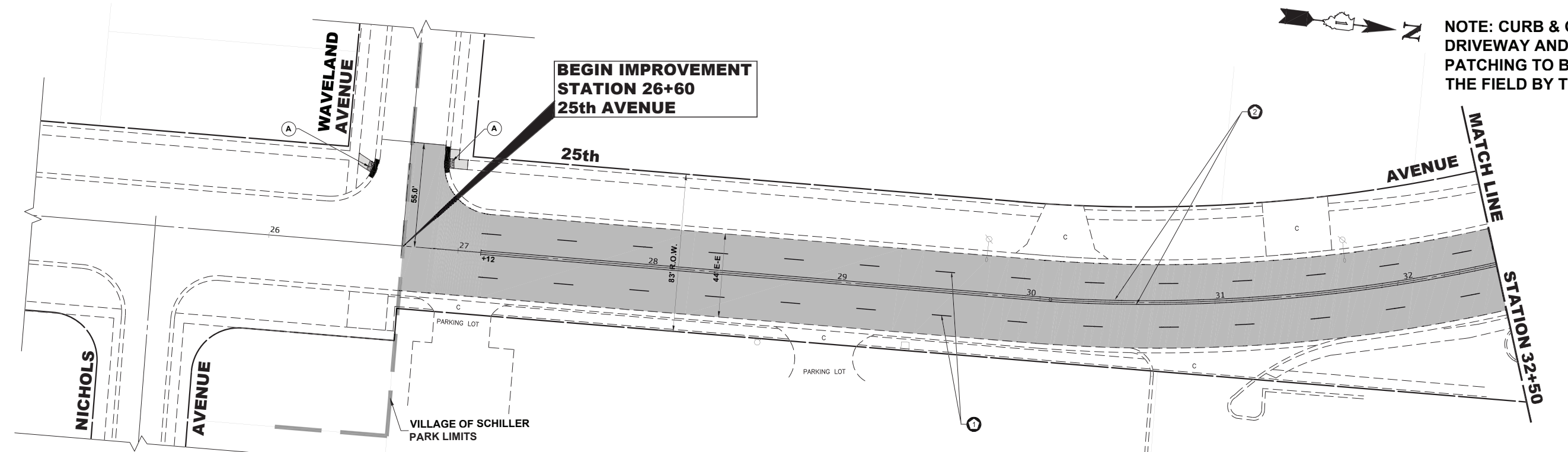
STATE OF ILLINOIS DEPARTMENT OF TRANSPORTATION

PROPOSED TYPICAL SECTIONS
 SCALE: NONE SHEET NO. 1 OF 2 SHEETS STA. TO STA.

F.A.U. RTE.	SECTION	COUNTY	TOTAL SHEETS	SHEET NO.
2714	23-00089-00-RS	COOK	23	8
FED. ROAD DIST. NO. 1 ILLINOIS			CONTRACT NO. 61K29	
FED. AID PROJECT			E.H.E. PROJECT NO. 800-18-28701	



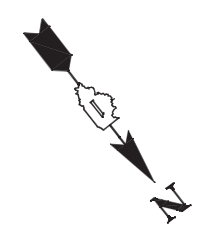
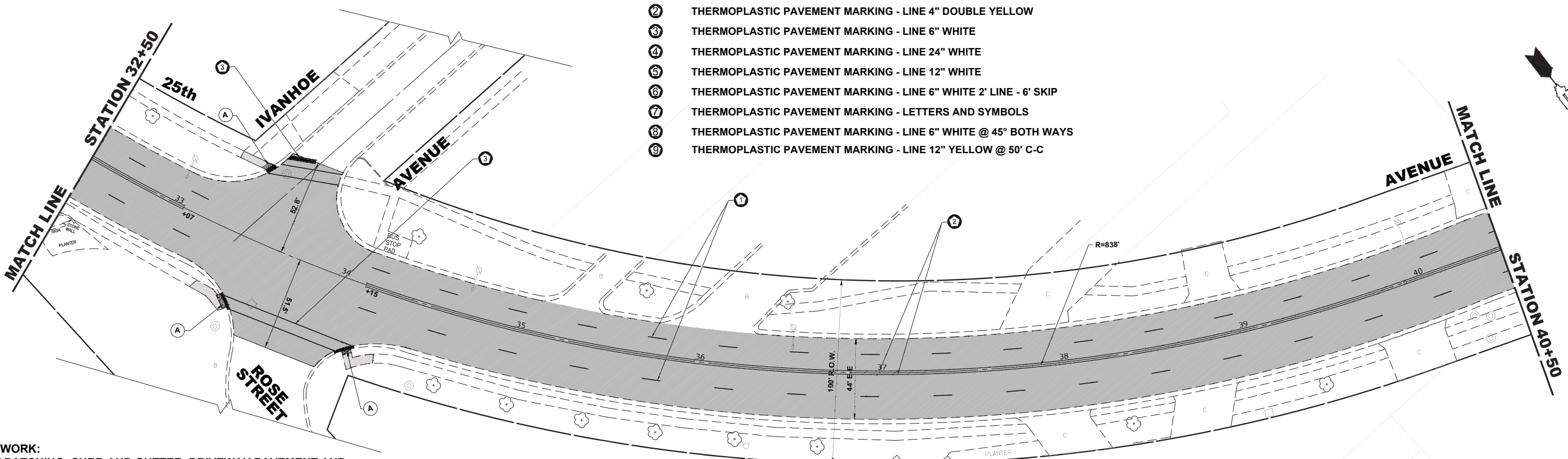
NOTE: CURB & GUTTER, DRIVEWAY AND PAVEMENT PATCHING TO BE DETERMINED IN THE FIELD BY THE ENGINEER



PAVEMENT MARKING LEGEND

SYMBOL	ITEM DESCRIPTION
①	THERMOPLASTIC PAVEMENT MARKING - LINE 4" WHITE 10' LINE 30' SPACE
②	THERMOPLASTIC PAVEMENT MARKING - LINE 4" DOUBLE YELLOW
③	THERMOPLASTIC PAVEMENT MARKING - LINE 6" WHITE
④	THERMOPLASTIC PAVEMENT MARKING - LINE 24" WHITE
⑤	THERMOPLASTIC PAVEMENT MARKING - LINE 12" WHITE
⑥	THERMOPLASTIC PAVEMENT MARKING - LINE 6" WHITE 2' LINE - 6' SKIP
⑦	THERMOPLASTIC PAVEMENT MARKING - LETTERS AND SYMBOLS
⑧	THERMOPLASTIC PAVEMENT MARKING - LINE 6" WHITE @ 45° BOTH WAYS
⑨	THERMOPLASTIC PAVEMENT MARKING - LINE 12" YELLOW @ 50' C-C

LEGEND
 A DETECTABLE WARNING



SCOPE OF WORK:
 PAVEMENT PATCHING, CURB AND GUTTER, DRIVEWAY PAVEMENT AND SIDEWALK REMOVAL AND REPLACEMENT,
 PORTLAND CEMENT CONCRETE SURFACE REMOVAL (VARIABLE DEPTH)
 POLYMERIZED HOT-MIX ASPHALT BINDER COURSE, IL-4.75, N50, 1"
 POLYMERIZED HOT-MIX ASPHALT SURFACE COURSE, IL-9.5, MIX "E", N70, 1 3/4"
 TOPSOIL FURNISH AND PLACE, 4" AND SODDING, SALT TOLERANT

NOTE:
 ANY SOILS GENERATED FROM CURB AND SIDEWALK REPAIRS SHALL REMAIN ON SITE IN THE RIGHT-OF-WAY. ANY SUCH SOILS SHALL BE PLACED IN THE LANDSCAPED PARKWAYS AS DIRECTED BY THE ENGINEER AND RESTORED.

Drawing file: \\s:\Projects_by_Village\Schiller Park\80018287 - 25TH AVE\SITE\25TH AVE_Updated.dwg Feb 07, 2024 - 1:35pm

HANCOCK ENGINEERING
 100+ Years of Experience
 ♦ Civil Engineers
 ♦ Municipal Consultants
 ♦ Established 1911

9938 Roosevelt Road
 Westchester, IL 60164-9780
 Phone: 708-865-0300
 www.hancock.com

DESIGNED - -	REVISD:
DRAWN - ECW, DMM	REVISD:
CHECKED - -	REVISD:
DATE - 12-29-23	REVISD:

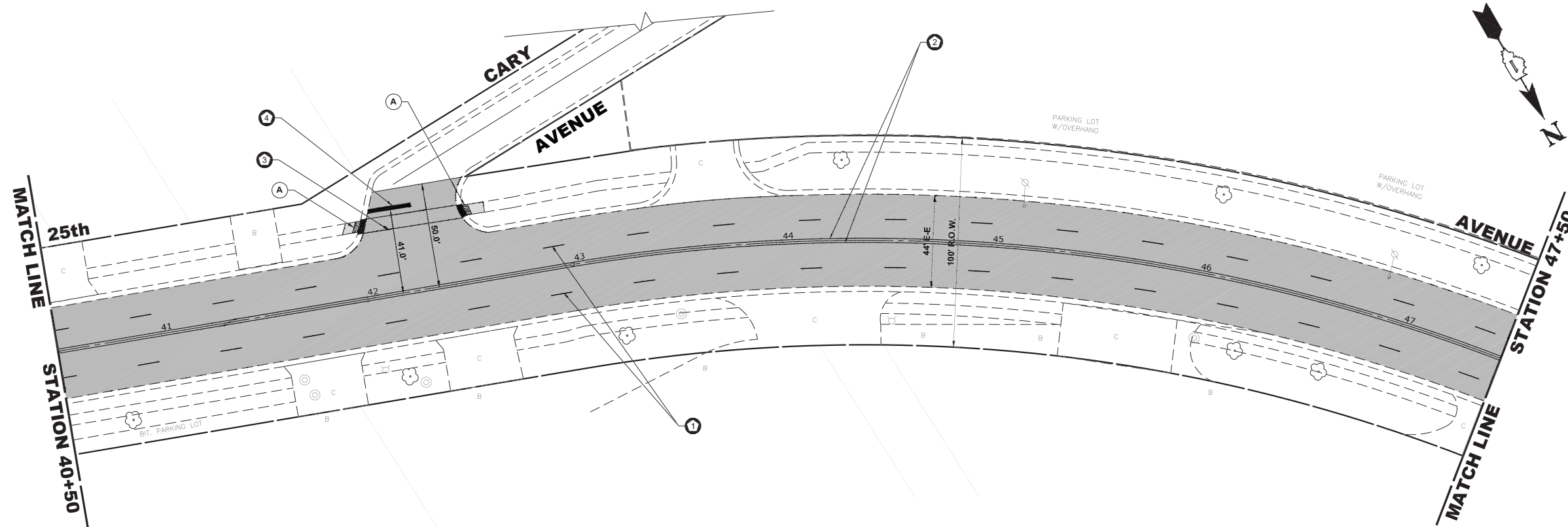
**STATE OF ILLINOIS
 DEPARTMENT OF TRANSPORTATION**

**25TH AVENUE
 RESURFACING / PAVEMENT MARKING PLAN**

SCALE: 1" = 20" SHEET NO. 1 OF 6 SHEETS STA. 25+00 TO STA. 40+50

F.A.U. RTE.	SECTION	COUNTY	TOTAL SHEETS	SHEET NO.
2714	23-00089-00-RS	COOK	23	9
FED. ROAD DIST. NO. 1 ILLINOIS			CONTRACT NO. 61K29	
FED. AID PROJECT			E.H.E. PROJECT NO. 800-18-28701	

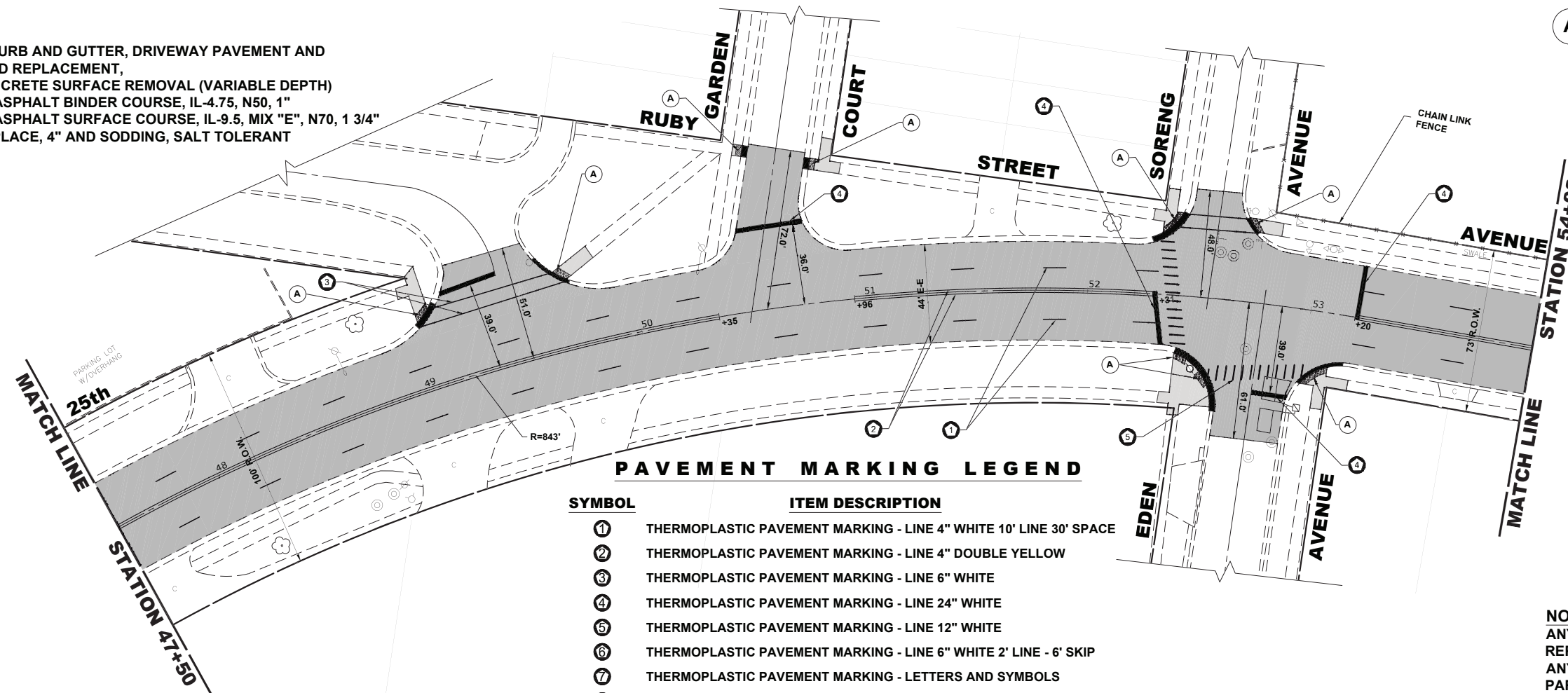
NOTE: CURB & GUTTER, DRIVEWAY AND PAVEMENT PATCHING TO BE DETERMINED IN THE FIELD BY THE ENGINEER



SCOPE OF WORK:
 PAVEMENT PATCHING, CURB AND GUTTER, DRIVEWAY PAVEMENT AND SIDEWALK REMOVAL AND REPLACEMENT,
 PORTLAND CEMENT CONCRETE SURFACE REMOVAL (VARIABLE DEPTH)
 POLYMERIZED HOT-MIX ASPHALT BINDER COURSE, IL-4.75, N50, 1"
 POLYMERIZED HOT-MIX ASPHALT SURFACE COURSE, IL-9.5, MIX "E", N70, 1 3/4"
 TOPSOIL FURNISH AND PLACE, 4" AND SODDING, SALT TOLERANT

LEGEND

(A) DETECTABLE WARNING



PAVEMENT MARKING LEGEND

SYMBOL	ITEM DESCRIPTION
①	THERMOPLASTIC PAVEMENT MARKING - LINE 4" WHITE 10' LINE 30' SPACE
②	THERMOPLASTIC PAVEMENT MARKING - LINE 4" DOUBLE YELLOW
③	THERMOPLASTIC PAVEMENT MARKING - LINE 6" WHITE
④	THERMOPLASTIC PAVEMENT MARKING - LINE 24" WHITE
⑤	THERMOPLASTIC PAVEMENT MARKING - LINE 12" WHITE
⑥	THERMOPLASTIC PAVEMENT MARKING - LINE 6" WHITE 2' LINE - 6' SKIP
⑦	THERMOPLASTIC PAVEMENT MARKING - LETTERS AND SYMBOLS
⑧	THERMOPLASTIC PAVEMENT MARKING - LINE 6" WHITE @ 45° BOTH WAYS
⑨	THERMOPLASTIC PAVEMENT MARKING - LINE 12" YELLOW @ 50' C-C

NOTE:
 ANY SOILS GENERATED FROM CURB AND SIDEWALK REPAIRS SHALL REMAIN ON SITE IN THE RIGHT-OF-WAY. ANY SUCH SOILS SHALL BE PLACED IN THE LANDSCAPED PARKWAYS AS DIRECTED BY THE ENGINEER AND RESTORED.

Drawing file: \\s:\Projects_by_Village\Schiller_Park\80018287 - 25TH AVE\SITE\25TH_AVE_Updated.dwg Feb 07, 2024 - 1:35pm



100+ Years of Experience
 ♦ Civil Engineers
 ♦ Municipal Consultants
 ♦ Established 1911

9938 Roosevelt Road
 Westchester, IL 60164-9780
 Phone: 708-665-0300
 www.hancock.com

DESIGNED - -
 DRAWN - ECW, DMM
 CHECKED - -
 DATE - 12-29-23

REVISED:
 REVISED:
 REVISED:
 REVISED:

STATE OF ILLINOIS
 DEPARTMENT OF TRANSPORTATION

25TH AVENUE
 RESURFACING / PAVEMENT MARKING PLAN
 SCALE: 1" = 20' SHEET NO. 2 OF 6 SHEETS STA. 40+50 TO STA. 54+00

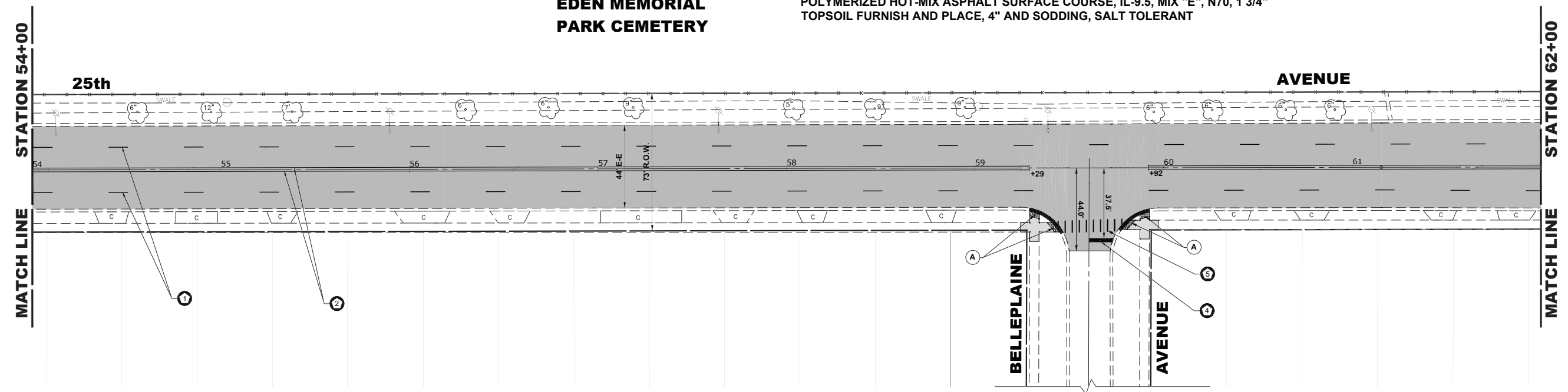
F.A.U. RTE.	SECTION	COUNTY	TOTAL SHEETS	SHEET NO.
2714	23-00089-00-RS	COOK	23	10
FED. ROAD DIST. NO. 1 ILLINOIS			CONTRACT NO. 61K29	
FED. AID PROJECT			E.H.E. PROJECT NO. 800-18-28701	



SCOPE OF WORK:
 PAVEMENT PATCHING, CURB AND GUTTER, DRIVEWAY PAVEMENT AND
 SIDEWALK REMOVAL AND REPLACEMENT,
 PORTLAND CEMENT CONCRETE SURFACE REMOVAL (VARIABLE DEPTH)
 POLYMERIZED HOT-MIX ASPHALT BINDER COURSE, IL-4.75, N50, 1"
 POLYMERIZED HOT-MIX ASPHALT SURFACE COURSE, IL-9.5, MIX "E", N70, 1 3/4"
 TOPSOIL FURNISH AND PLACE, 4" AND SODDING, SALT TOLERANT

**NOTE: CURB & GUTTER,
 DRIVEWAY AND PAVEMENT
 PATCHING TO BE DETERMINED IN
 THE FIELD BY THE ENGINEER**

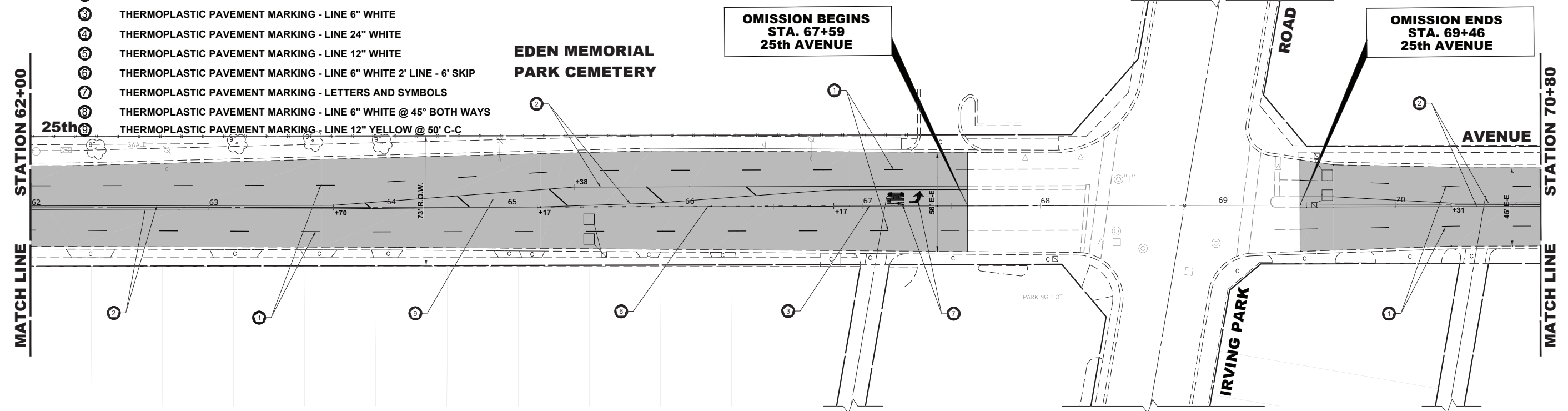
**EDEN MEMORIAL
 PARK CEMETERY**



PAVEMENT MARKING LEGEND

SYMBOL	ITEM DESCRIPTION
①	THERMOPLASTIC PAVEMENT MARKING - LINE 4" WHITE 10' LINE 30' SPACE
②	THERMOPLASTIC PAVEMENT MARKING - LINE 4" DOUBLE YELLOW
③	THERMOPLASTIC PAVEMENT MARKING - LINE 6" WHITE
④	THERMOPLASTIC PAVEMENT MARKING - LINE 24" WHITE
⑤	THERMOPLASTIC PAVEMENT MARKING - LINE 12" WHITE
⑥	THERMOPLASTIC PAVEMENT MARKING - LINE 6" WHITE 2' LINE - 6' SKIP
⑦	THERMOPLASTIC PAVEMENT MARKING - LETTERS AND SYMBOLS
⑧	THERMOPLASTIC PAVEMENT MARKING - LINE 6" WHITE @ 45° BOTH WAYS
⑨	THERMOPLASTIC PAVEMENT MARKING - LINE 12" YELLOW @ 50' C-C

LEGEND
 A DETECTABLE WARNING



**OMISSION BEGINS
 STA. 67+59
 25th AVENUE**

**OMISSION ENDS
 STA. 69+46
 25th AVENUE**

NOTE:
 ANY SOILS GENERATED FROM CURB AND SIDEWALK
 REPAIRS SHALL REMAIN ON SITE IN THE RIGHT-OF-WAY.
 ANY SUCH SOILS SHALL BE PLACED IN THE LANDSCAPED
 PARKWAYS AS DIRECTED BY THE ENGINEER AND
 RESTORED.

Drawing file: \\s:\Projects_by_Village\Schiller Park\80018287 - 25TH AVE\SITE\25TH AVE_Updated.dwg Feb 07, 2024 - 1:07pm

HANCOCK ENGINEERING
 100+ Years of Experience
 ♦ Civil Engineers
 ♦ Municipal Consultants
 ♦ Established 1911

9938 Roosevelt Road
 Westchester, IL 60164-9780
 Phone: 708-665-0300
 www.hancock.com

DESIGNED - -	REVISED:
DRAWN - ECW, DMM	REVISED:
CHECKED - -	REVISED:
DATE - 12-29-23	REVISED:

**STATE OF ILLINOIS
 DEPARTMENT OF TRANSPORTATION**

**25TH AVENUE
 RESURFACING / PAVEMENT MARKING PLAN**

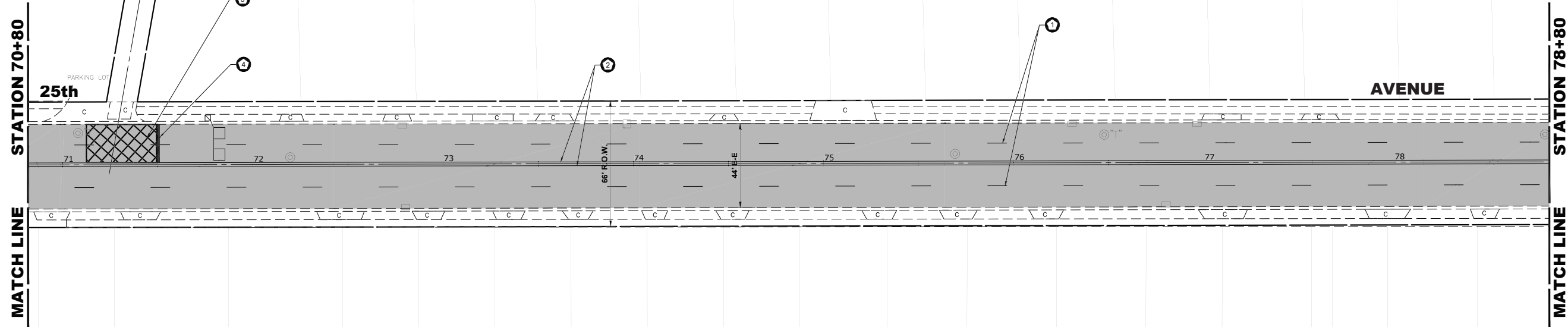
SCALE: 1" = 20' SHEET NO. 3 OF 6 SHEETS STA. 54+00 TO STA. 70+80

F.A.U. RTE.	SECTION	COUNTY	TOTAL SHEETS	SHEET NO.
2714	23-00089-00-RS	COOK	23	11
FED. ROAD DIST. NO. 1 ILLINOIS			CONTRACT NO. 61K29	
			FED. AID PROJECT	

SCOPE OF WORK:
 PAVEMENT PATCHING, CURB AND GUTTER, DRIVEWAY PAVEMENT AND
 SIDEWALK REMOVAL AND REPLACEMENT,
 PORTLAND CEMENT CONCRETE SURFACE REMOVAL (VARIABLE DEPTH)
 POLYMERIZED HOT-MIX ASPHALT BINDER COURSE, IL-4.75, N50, 1"
 POLYMERIZED HOT-MIX ASPHALT SURFACE COURSE, IL-9.5, MIX "E", N70, 1 3/4"
 TOPSOIL FURNISH AND PLACE, 4" AND SODDING, SALT TOLERANT



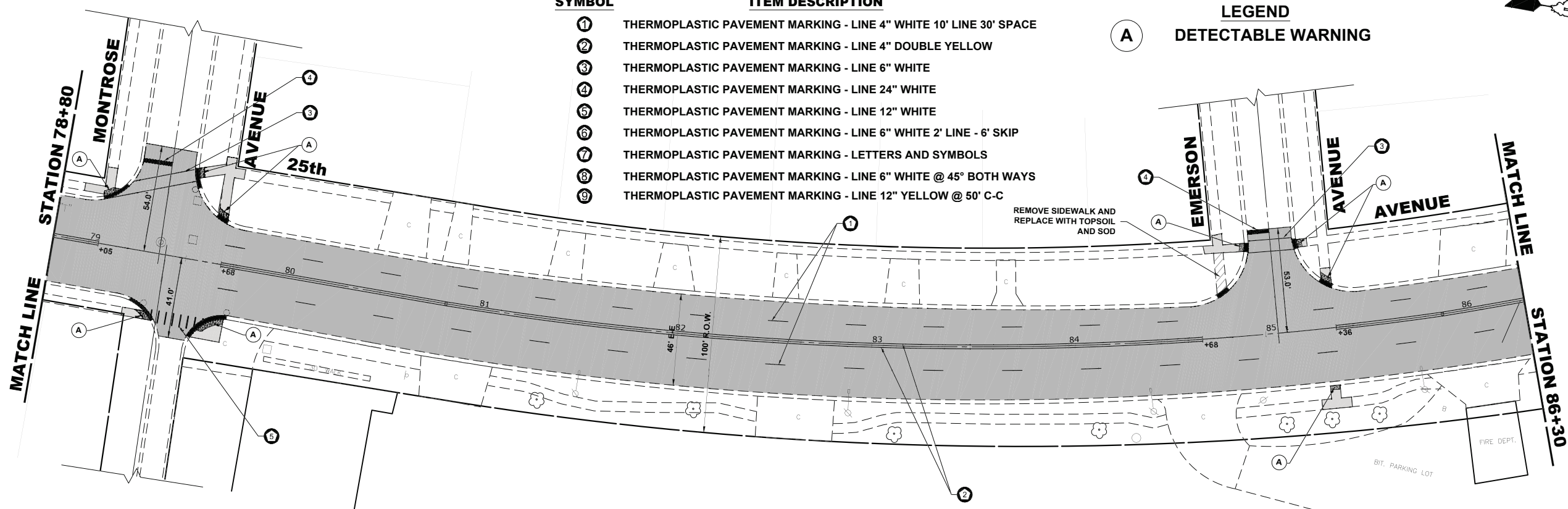
**NOTE: CURB & GUTTER,
 DRIVEWAY AND PAVEMENT
 PATCHING TO BE DETERMINED IN
 THE FIELD BY THE ENGINEER**



PAVEMENT MARKING LEGEND

SYMBOL	ITEM DESCRIPTION
①	THERMOPLASTIC PAVEMENT MARKING - LINE 4" WHITE 10' LINE 30' SPACE
②	THERMOPLASTIC PAVEMENT MARKING - LINE 4" DOUBLE YELLOW
③	THERMOPLASTIC PAVEMENT MARKING - LINE 6" WHITE
④	THERMOPLASTIC PAVEMENT MARKING - LINE 24" WHITE
⑤	THERMOPLASTIC PAVEMENT MARKING - LINE 12" WHITE
⑥	THERMOPLASTIC PAVEMENT MARKING - LINE 6" WHITE 2' LINE - 6" SKIP
⑦	THERMOPLASTIC PAVEMENT MARKING - LETTERS AND SYMBOLS
⑧	THERMOPLASTIC PAVEMENT MARKING - LINE 6" WHITE @ 45° BOTH WAYS
⑨	THERMOPLASTIC PAVEMENT MARKING - LINE 12" YELLOW @ 50' C-C

LEGEND
A DETECTABLE WARNING



NOTE:
 ANY SOILS GENERATED FROM CURB AND SIDEWALK
 REPAIRS SHALL REMAIN ON SITE IN THE RIGHT-OF-WAY.
 ANY SUCH SOILS SHALL BE PLACED IN THE LANDSCAPED
 PARKWAYS AS DIRECTED BY THE ENGINEER AND
 RESTORED.

Drawing file: K:\Projects_by_Village\Schiller Park\80018287 - 25TH AVE\STATION 25TH AVE_Updated.dwg Feb 07, 2024 - 1:33pm

HANCOCK ENGINEERING
 100+ Years of Experience
 Civil Engineers
 Municipal Consultants
 Established 1911

9938 Roosevelt Road
 Westchester, IL 60164-9780
 Phone: 708-665-0300
 www.hancock.com

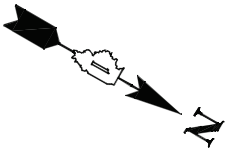
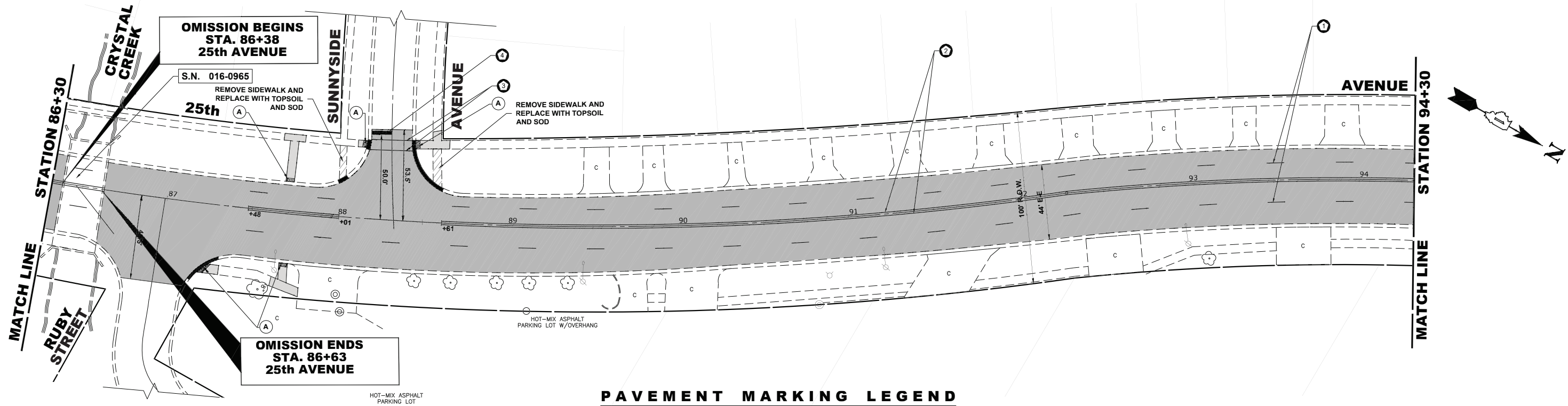
DESIGNED - -	REVISED:
DRAWN - ECW, DMM	REVISED:
CHECKED - -	REVISED:
DATE - 12-29-23	REVISED:

**STATE OF ILLINOIS
 DEPARTMENT OF TRANSPORTATION**

**25TH AVENUE
 RESURFACING / PAVEMENT MARKING PLAN**

SCALE: 1" = 20" SHEET NO. 4 OF 6 SHEETS STA. 70+80 TO STA. 86+00

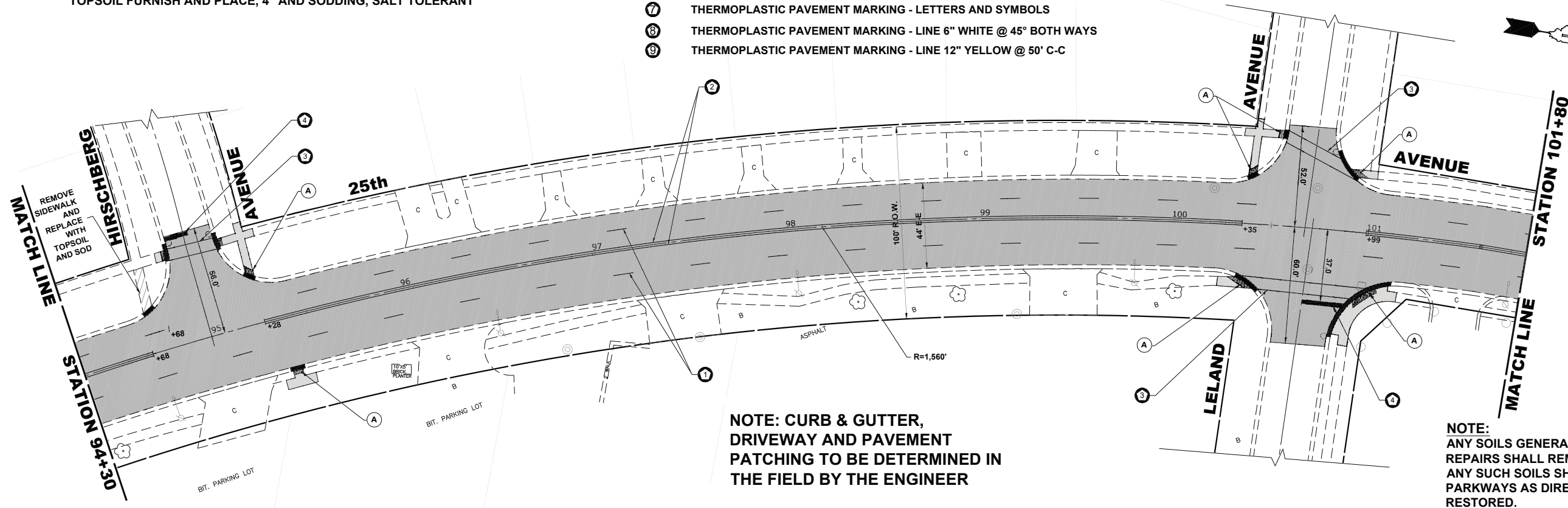
F.A.U. RTE.	SECTION	COUNTY	TOTAL SHEETS	SHEET NO.
2714	23-00089-00-RS	COOK	23	12
FED. ROAD DIST. NO. 1 ILLINOIS			CONTRACT NO. 61K29	
FED. AID PROJECT			E.H.E. PROJECT NO. 800-18-28701	



PAVEMENT MARKING LEGEND

SYMBOL	ITEM DESCRIPTION
①	THERMOPLASTIC PAVEMENT MARKING - LINE 4" WHITE 10' LINE 30' SPACE
②	THERMOPLASTIC PAVEMENT MARKING - LINE 4" DOUBLE YELLOW
③	THERMOPLASTIC PAVEMENT MARKING - LINE 6" WHITE
④	THERMOPLASTIC PAVEMENT MARKING - LINE 24" WHITE
⑤	THERMOPLASTIC PAVEMENT MARKING - LINE 12" WHITE
⑥	THERMOPLASTIC PAVEMENT MARKING - LINE 6" WHITE 2' LINE - 6' SKIP
⑦	THERMOPLASTIC PAVEMENT MARKING - LETTERS AND SYMBOLS
⑧	THERMOPLASTIC PAVEMENT MARKING - LINE 6" WHITE @ 45° BOTH WAYS
⑨	THERMOPLASTIC PAVEMENT MARKING - LINE 12" YELLOW @ 50' C-C

SCOPE OF WORK:
 PAVEMENT PATCHING, CURB AND GUTTER, DRIVEWAY PAVEMENT AND SIDEWALK REMOVAL AND REPLACEMENT, PORTLAND CEMENT CONCRETE SURFACE REMOVAL (VARIABLE DEPTH) POLYMERIZED HOT-MIX ASPHALT BINDER COURSE, IL-4.75, N50, 1" POLYMERIZED HOT-MIX ASPHALT SURFACE COURSE, IL-9.5, MIX "E", N70, 1 3/4" TOPSOIL FURNISH AND PLACE, 4" AND SODDING, SALT TOLERANT



LEGEND
 DETECTABLE WARNING

NOTE: CURB & GUTTER, DRIVEWAY AND PAVEMENT PATCHING TO BE DETERMINED IN THE FIELD BY THE ENGINEER

NOTE:
 ANY SOILS GENERATED FROM CURB AND SIDEWALK REPAIRS SHALL REMAIN ON SITE IN THE RIGHT-OF-WAY. ANY SUCH SOILS SHALL BE PLACED IN THE LANDSCAPED PARKWAYS AS DIRECTED BY THE ENGINEER AND RESTORED.

Drawing file: \\V:\Projects_by_Village\Schiller Park\80018287 - 25TH AVE\STATE\25TH AVE_Updated.dwg Feb 07, 2024 - 1:34pm

HANCOCK ENGINEERING
 100+ Years of Experience
 • Civil Engineers
 • Municipal Consultants
 • Established 1911

9938 Roosevelt Road
 Westchester, IL 60164-9780
 Phone: 708-665-0300
 www.hancock.com

DESIGNED - -	REVISED:
DRAWN - ECW, DMM	REVISED:
CHECKED - -	REVISED:
DATE - 12-29-23	REVISED:

STATE OF ILLINOIS
DEPARTMENT OF TRANSPORTATION

25TH AVENUE
RESURFACING / PAVEMENT MARKING PLAN

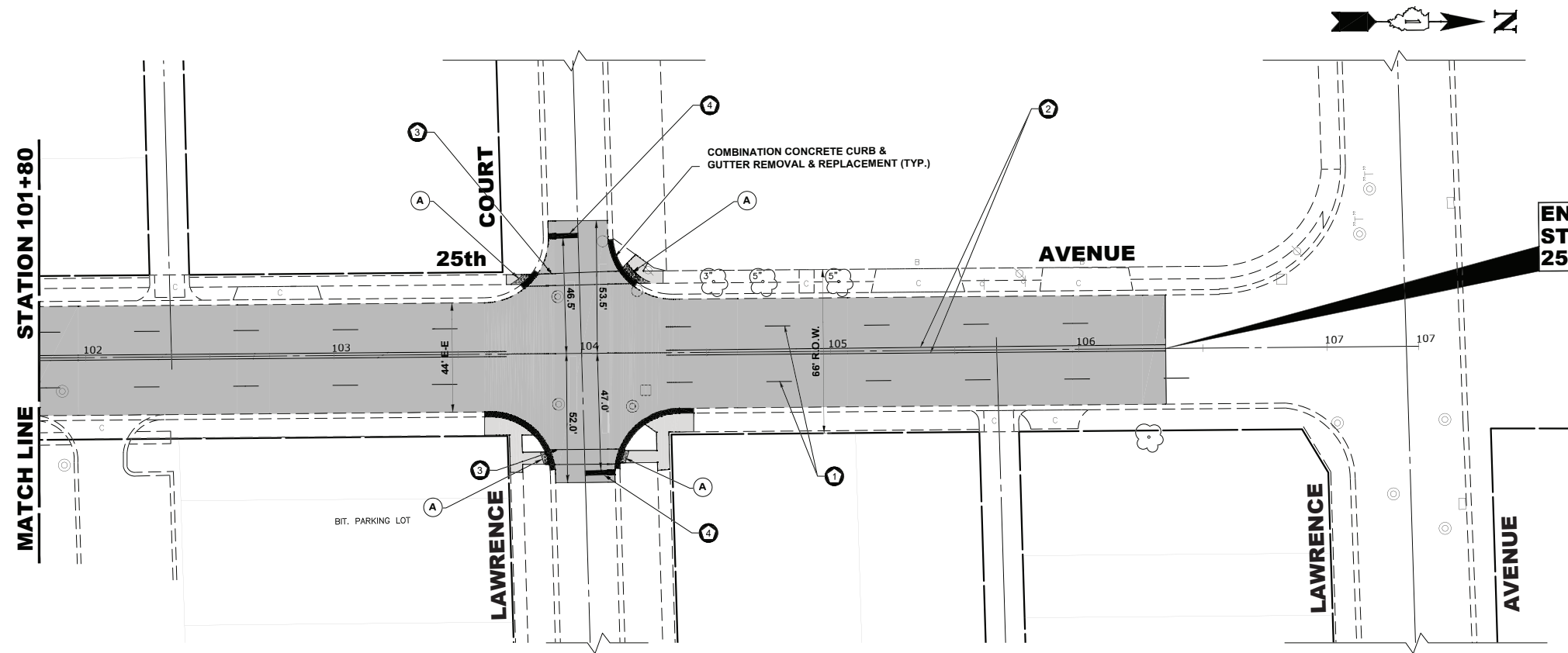
SCALE: 1" = 20' SHEET NO. 5 OF 6 SHEETS STA. 86+30 TO STA. 101+80

F.A.U. RTE.	SECTION	COUNTY	TOTAL SHEETS	SHEET NO.
2714	23-00089-00-RS	COOK	23	13
FED. ROAD DIST. NO. 1 ILLINOIS			CONTRACT NO. 61K29	
FED. AID PROJECT			E.H.E. PROJECT NO. 800-18-28701	

NOTE: CURB & GUTTER,
DRIVEWAY AND PAVEMENT
PATCHING TO BE DETERMINED IN
THE FIELD BY THE ENGINEER

TRI-STATE TOLLWAY
(INTERSTATE ROUTE 294)

END IMPROVEMENT
STATION 106+35
25th AVENUE



LEGEND
A DETECTABLE WARNING

SCOPE OF WORK:
PAVEMENT PATCHING, CURB AND GUTTER, DRIVEWAY PAVEMENT AND
SIDEWALK REMOVAL AND REPLACEMENT,
PORTLAND CEMENT CONCRETE SURFACE REMOVAL (VARIABLE DEPTH)
POLYMERIZED HOT-MIX ASPHALT BINDER COURSE, IL-4.75, N50, 1"
POLYMERIZED HOT-MIX ASPHALT SURFACE COURSE, IL-9.5, MIX "E", N70, 1 3/4"
TOPSOIL FURNISH AND PLACE, 4" AND SODDING, SALT TOLERANT

PAVEMENT MARKING LEGEND

SYMBOL	ITEM DESCRIPTION
①	THERMOPLASTIC PAVEMENT MARKING - LINE 4" WHITE 10' LINE 30' SPACE
②	THERMOPLASTIC PAVEMENT MARKING - LINE 4" DOUBLE YELLOW
③	THERMOPLASTIC PAVEMENT MARKING - LINE 6" WHITE
④	THERMOPLASTIC PAVEMENT MARKING - LINE 24" WHITE
⑤	THERMOPLASTIC PAVEMENT MARKING - LINE 12" WHITE
⑥	THERMOPLASTIC PAVEMENT MARKING - LINE 6" WHITE 2' LINE - 6' SKIP
⑦	THERMOPLASTIC PAVEMENT MARKING - LETTERS AND SYMBOLS
⑧	THERMOPLASTIC PAVEMENT MARKING - LINE 6" WHITE @ 45° BOTH WAYS
⑨	THERMOPLASTIC PAVEMENT MARKING - LINE 12" YELLOW @ 50' C-C

NOTE:
ANY SOILS GENERATED FROM CURB AND SIDEWALK
REPAIRS SHALL REMAIN ON SITE IN THE RIGHT-OF-WAY.
ANY SUCH SOILS SHALL BE PLACED IN THE LANDSCAPED
PARKWAYS AS DIRECTED BY THE ENGINEER AND
RESTORED.

Drawing file: \\V:\Projects_by_Village\Schiller Park\80018287 - 25TH AVE\SITE\25TH AVE_Updated.dwg Feb 07, 2024 - 1:34pm



100+ Years of
Experience
♦ Civil Engineers
♦ Municipal Consultants
♦ Established 1911

9938 Roosevelt Road
Waukegan, IL 60154-9780
Phone: 708-865-0300
www.hancock.com

DESIGNED - -
DRAWN - ECW, DMM
CHECKED - -
DATE - 12-29-23

REVISED:
REVISED:
REVISED:
REVISED:

**STATE OF ILLINOIS
DEPARTMENT OF TRANSPORTATION**

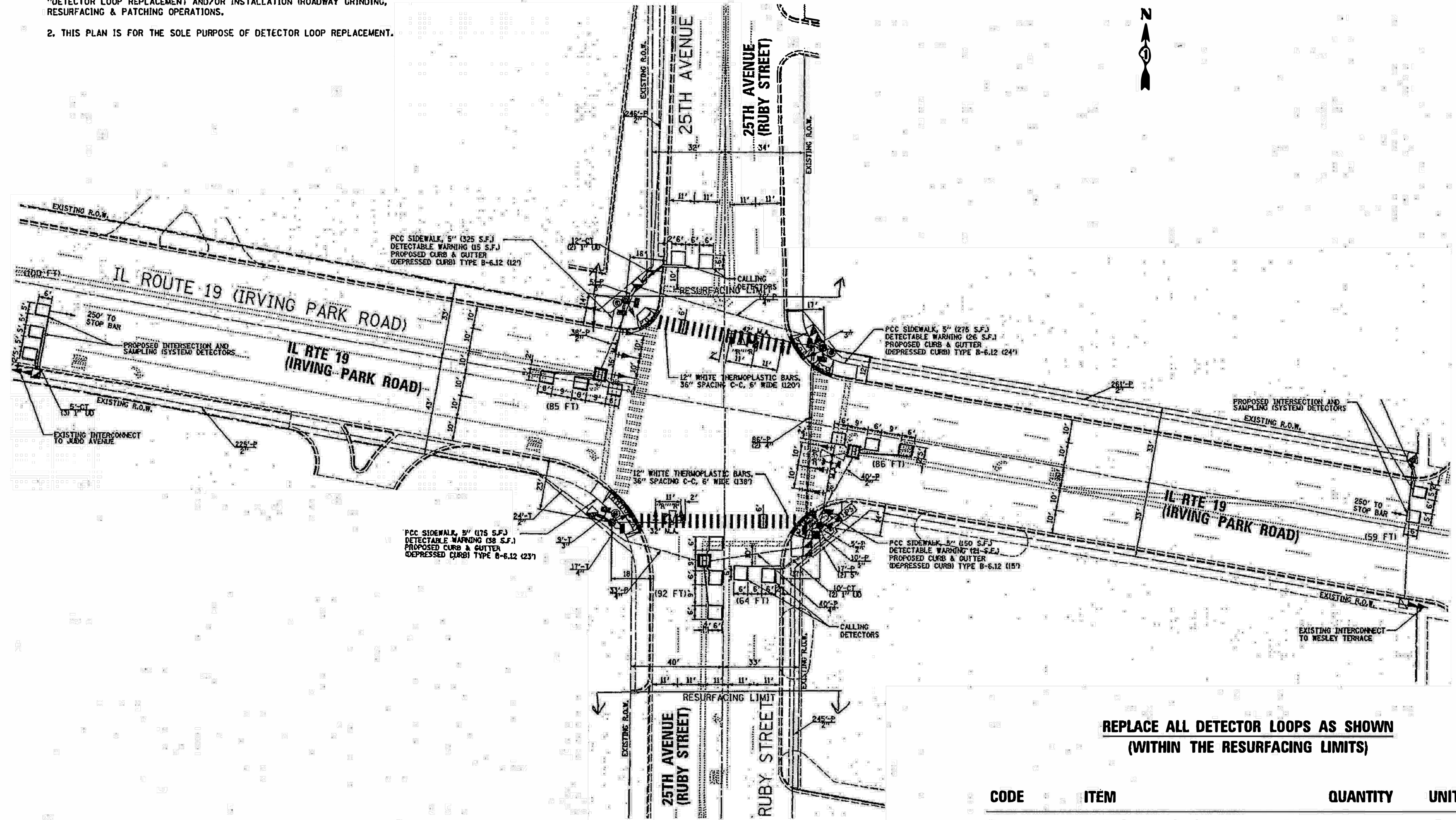
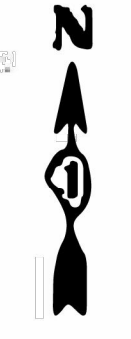
**25TH AVENUE
RESURFACING / PAVEMENT MARKING PLAN**

SCALE: 1" = 20" SHEET NO. 6 OF 6 SHEETS STA. 101+80 TO STA. 106+00

F.A.U. RTE.	SECTION	COUNTY	TOTAL SHEETS	SHEET NO.
2714	23-00089-00-RS	COOK	23	14
FED. ROAD DIST. NO. 1 ILLINOIS			CONTRACT NO. 61K29	
FED. AID PROJECT			E.H.E. PROJECT NO. 800-18-28701	

NOTES:

1. WORK SHALL MEET THE REQUIREMENTS OF THE SPECIAL PROVISION, "DETECTOR LOOP REPLACEMENT AND/OR INSTALLATION (ROADWAY GRINDING, RESURFACING & PATCHING OPERATIONS).
2. THIS PLAN IS FOR THE SOLE PURPOSE OF DETECTOR LOOP REPLACEMENT.



**REPLACE ALL DETECTOR LOOPS AS SHOWN
(WITHIN THE RESURFACING LIMITS)**

CODE	ITEM	QUANTITY	UNIT
88600600	DETECTOR LOOP REPLACEMENT	197	FOOT

HANCOCK ENGINEERING
 100+ Years of Excellence
 Civil Engineers
 Municipal Consultants
 Established 1911
 9933 Roosevelt Road
 Westchester, IL 60154-2780
 Phone: 708-845-0300
 www.hancock.com

DESIGNED	-	REVISED:	
DRAWN	ECW, DMM	REVISED:	
CHECKED	-	REVISED:	
DATE	12-29-23	REVISED:	

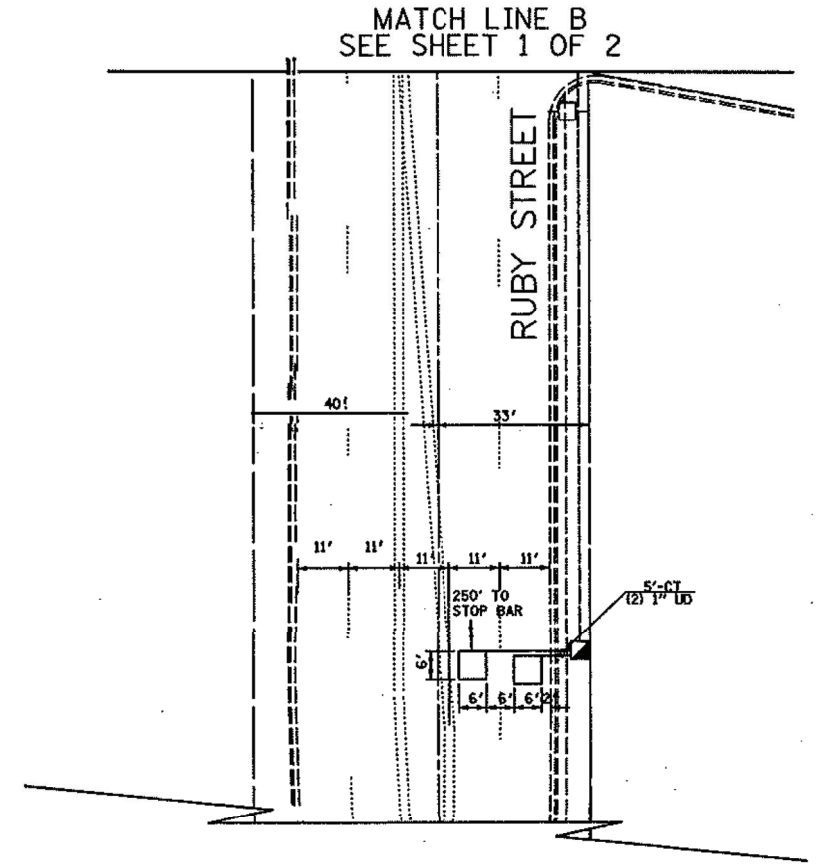
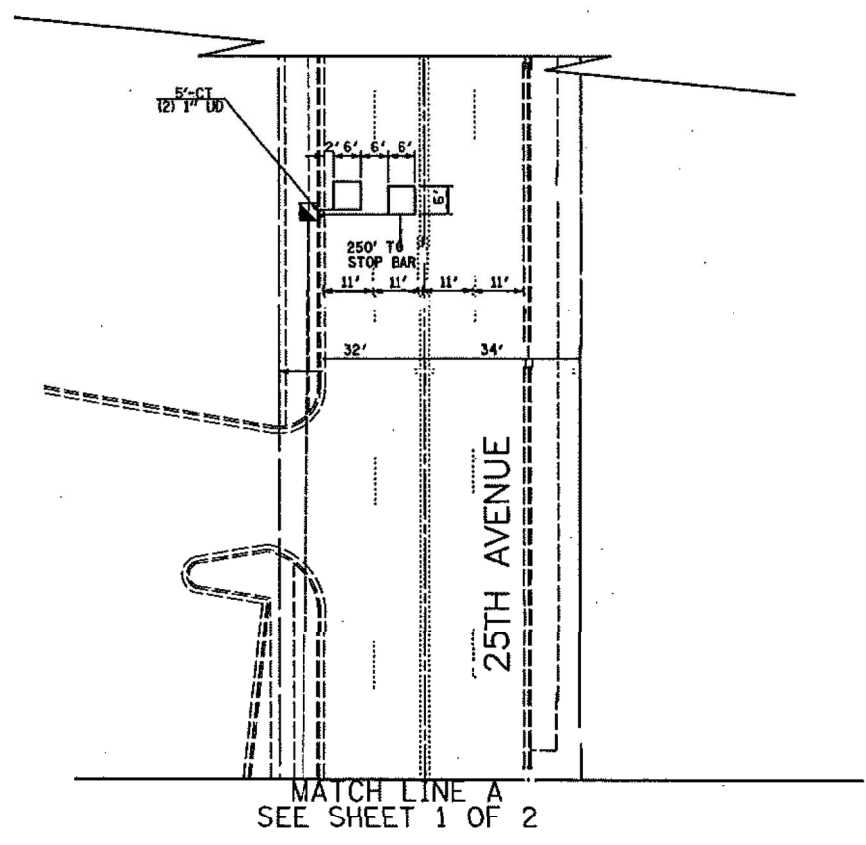
**STATE OF ILLINOIS
DEPARTMENT OF TRANSPORTATION**

**DETECTOR LOOP REPLACEMENT PLAN
25TH AVENUE AT IRVING PARK ROAD**

SCALE: SHEET NO. 1 OF 2 SHEETS STA. TO STA.

F.A.U. RTE.	SECTION	COUNTY	TOTAL SHEETS	SHEET NO.
2714	23-00089-00-RS	COOK	23	15
FED. ROAD DIST. NO. 1 ILLINOIS			CONTRACT NO. 61K29	
FED. AID PROJECT			E.H.E. PROJECT NO. 800-18-28701	

Drawing file: W:\Projects_by_Village\Schiller Park\80102827 - 25th Ave\25th Detector Loop Plans.dwg Feb 16, 2024 - 2:13pm



NOTES:

1. WORK SHALL MEET THE REQUIREMENTS OF THE SPECIAL PROVISION, "DETECTOR LOOP REPLACEMENT AND/OR INSTALLATION (ROADWAY GRINDING, RESURFACING & PATCHING OPERATIONS).
2. THIS PLAN IS FOR THE SOLE PURPOSE OF DETECTOR LOOP REPLACEMENT.

**REPLACE ALL DETECTOR LOOPS AS SHOWN
(WITHIN THE RESURFACING LIMITS)**

Drawing file: W:\Projects_by_Village\Schiller_Park\8018287 - 25TH AVE\25th Detector Loop Plans.dwg Jan 15, 2024 - 11:26am

HANCOCK ENGINEERING
 444 West of Independence
 9900 Roosevelt Road
 Woodstock, IL 60154-2782
 Phone: 708-868-0800
 www.hancock.com

◆ CMI Engineers
 ◆ Municipal Consultants
 ◆ Established 1911

DESIGNED	- -	REVISED:	
DRAWN	ECW, DMM	REVISED:	
CHECKED	- -	REVISED:	
DATE	12-29-23	REVISED:	

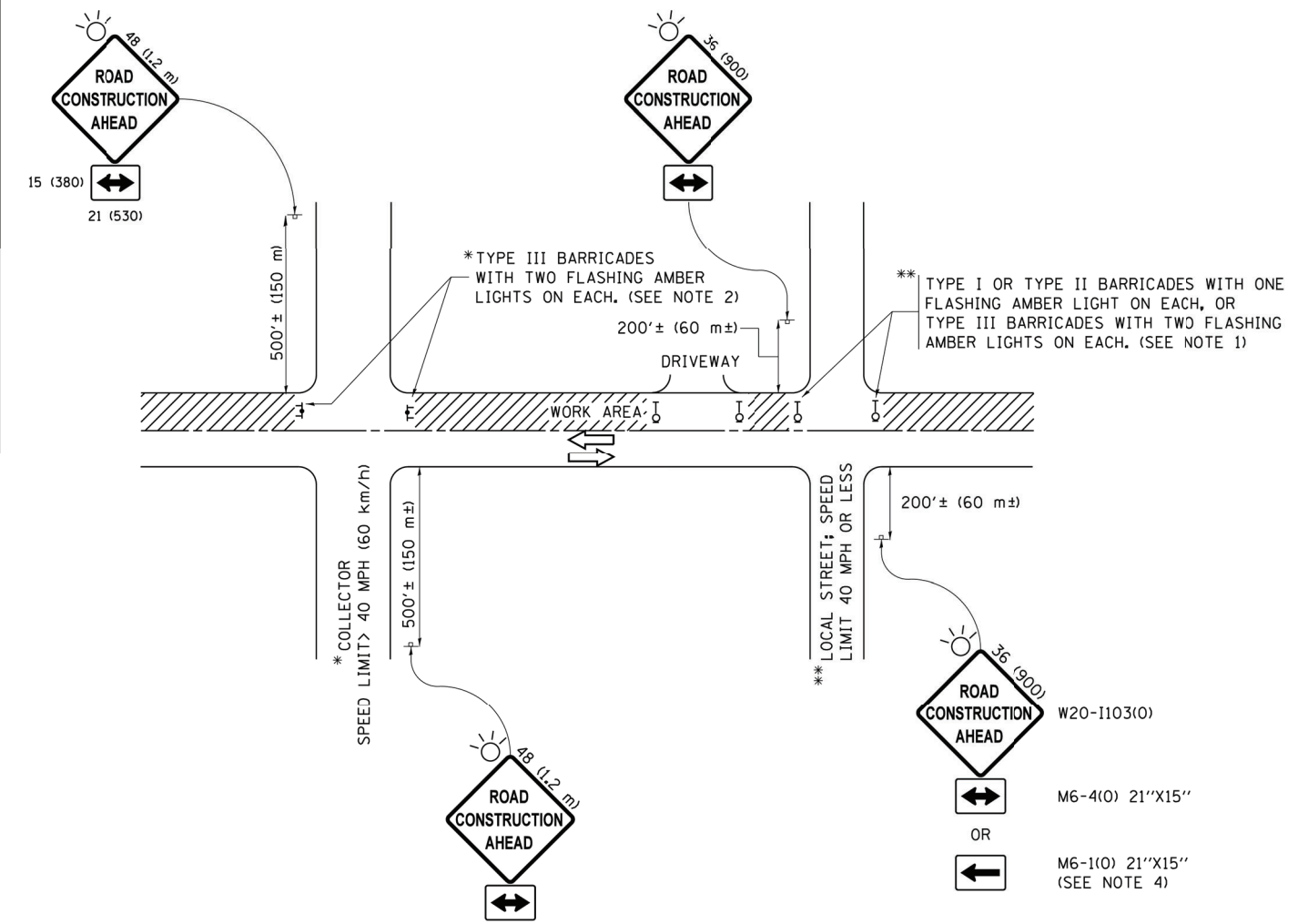
**STATE OF ILLINOIS
DEPARTMENT OF TRANSPORTATION**

**DETECTOR LOOP REPLACEMENT PLAN
25TH AVENUE AT IRVING PARK ROAD**

SCALE: SHEET NO. 2 OF 2 SHEETS STA. TO STA.

F.A.U. RTE.	SECTION	COUNTY	TOTAL SHEETS	SHEET NO.
2714	23-00089-00-RS	COOK	23	16
FED. ROAD DIST. NO. 1 ILLINOIS			CONTRACT NO. 61K29	
			FED. AID PROJECT	

Drawing file: W:\Projects_by_Village\Schiller Park\80018287 - 25TH AVE\DOT Standard.dwg Jan 15, 2024 - 11:28am



NOTES:

1. SIDE ROAD WITH A SPEED LIMIT OF 40 MPH (60 km/h) OR LESS AS SHOWN ON THE DRAWING AND AS DIRECTED BY THE ENGINEER:
 - a) ONE "ROAD CONSTRUCTION AHEAD" SIGN 36 x 36 (900x900) WITH A FLASHER MOUNTED ON IT APPROXIMATELY 200' (60 m) IN ADVANCE OF THE MAIN ROUTE.
 - b) THE CLOSED PORTION OF THE MAIN ROUTE SHALL BE PROTECTED BY BLOCKING WITH TYPE I, TYPE II OR TYPE III BARRICADES, 1/3 OF THE CROSS SECTION OF THE CLOSED PORTION.
2. SIDE ROAD WITH A SPEED LIMIT GREATER THAN 40 MPH (60 km/h) AS SHOWN ON THE DRAWING AND AS DIRECTED BY THE ENGINEER:
 - a) ONE "ROAD CONSTRUCTION AHEAD" SIGN 48 x 48 (1.2 m x 1.2 m) WITH A FLASHER MOUNTED ON IT APPROXIMATELY 500' (150 m) IN ADVANCE OF THE MAIN ROUTE.
 - b) THE CLOSED PORTION OF THE MAIN ROUTE SHALL BE PROTECTED BY BLOCKING WITH TYPE III BARRICADES, 1/2 OF THE CROSS SECTION OF THE CLOSED PORTION.
3. CONES MAY BE SUBSTITUTED FOR BARRICADES OR DRUMS AT HALF THE SPACING DURING DAY OPERATIONS. CONES SHALL BE A MINIMUM OF 28 (710) IN HEIGHT.
4. WHEN THE SIDE ROAD LIES BETWEEN THE BEGINNING OF THE MAINLINE SIGNING AND THE WORK ZONE, A SINGLE HEADED ARROW (M6-1) SHALL BE USED IN LIEU OF THE DOUBLE HEADED ARROW (M6-4).
5. WHEN WORK IS BEING PERFORMED ON A SIDE ROAD OR DRIVEWAY, FOLLOW THE APPLICABLE STANDARD(S). THE DIRECTIONAL ARROW (M6-1 OR M6-4) SHALL BE COVERED OR REMOVED WHEN NO LONGER CONSISTENT WITH THE TRAFFIC CONTROL SET-UP.
6. ADVANCE WARNING SIGNS ARE TO BE OMITTED ON DRIVEWAYS UNLESS OTHERWISE SPECIFIED IN THE PLANS OR BY THE ENGINEER.
7. THE TRAFFIC CONTROL AND PROTECTION FOR SIDE ROADS, INTERSECTIONS, AND DRIVEWAYS SHALL BE INCLUDED IN THE COST OF SPECIFIED TRAFFIC CONTROL STANDARDS OR ITEMS.

All dimensions are in inches (millimeters) unless otherwise shown.

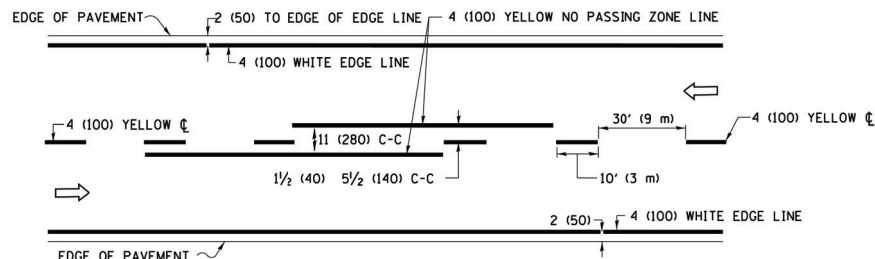
FILE NAME =	USER NAME = foatemj	DESIGNED - L.H.A.	REVISED - A. HOUSEH 10-15-96
p:\IL084EBID\INTEG\illinois.gov\PIDOT\Documents\DOT Offices\District 1\Projects\Dist		DRAWN - CADData\CADsheets\tcl0.dgn	REVISED - T. RAMMACHER 01-06-00
Default	PLOT SCALE = 50.0000 ' / in.	CHECKED -	REVISED - A. SCHUETZE 07-01-13
	PLOT DATE = 9/15/2016	DATE - 06-89	REVISED - A. SCHUETZE 09-15-16

**STATE OF ILLINOIS
DEPARTMENT OF TRANSPORTATION**

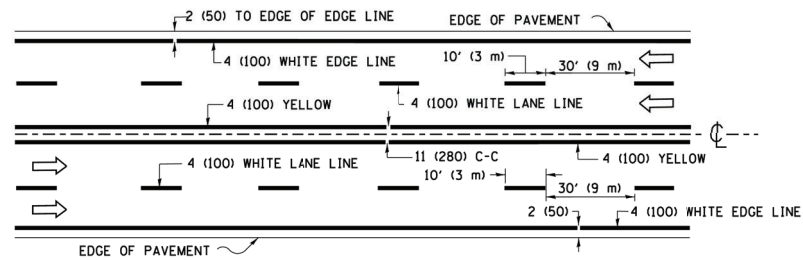
**TRAFFIC CONTROL AND PROTECTION FOR
SIDE ROADS, INTERSECTIONS, AND DRIVEWAYS**

SCALE: NONE SHEET 1 OF 1 SHEETS STA. TO STA.

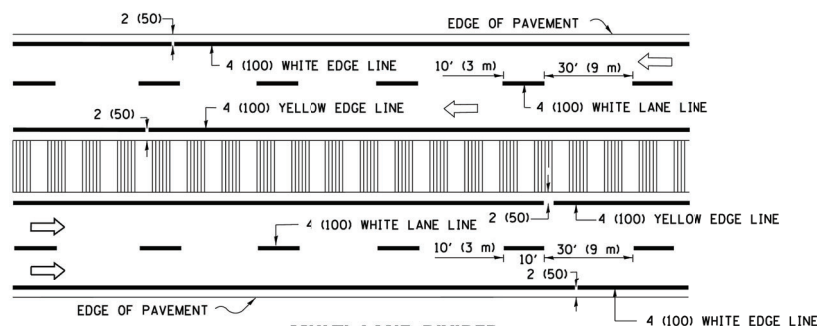
F.A.U. RTE.	SECTION	COUNTY	TOTAL SHEETS	SHEET NO.
2714	23-00089-00-RS	COOK	23	17
TC-10		CONTRACT NO. 61K29		
FED. ROAD DIST. NO. 1		ILLINOIS FED. AID PROJECT		



2-LANE ROADWAY

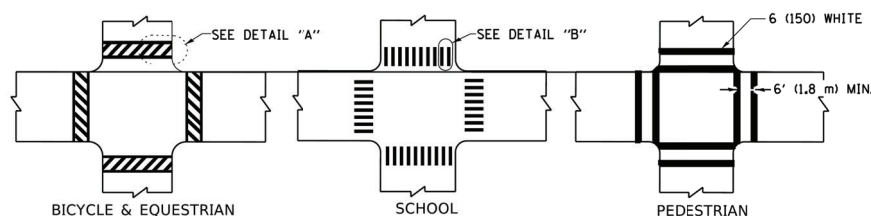


MULTI-LANE UNDIVIDED



MULTI-LANE DIVIDED WITH MEDIAN

TYPICAL LANE AND EDGE LINE MARKING

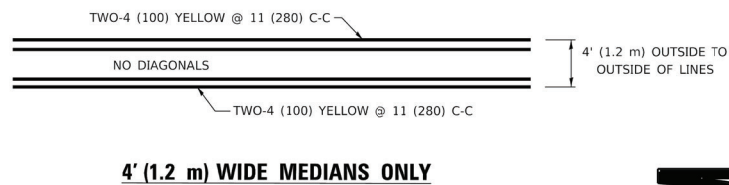


DETAIL "A"

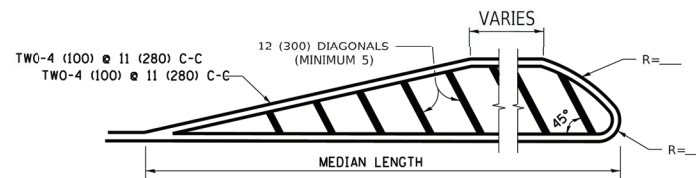
DETAIL "B"

TYPICAL CROSSWALK MARKING

* MARKINGS SHALL BE INSTALLED PARALLEL TO THE CENTERLINE OF THE ROAD WHICH IT CROSSES

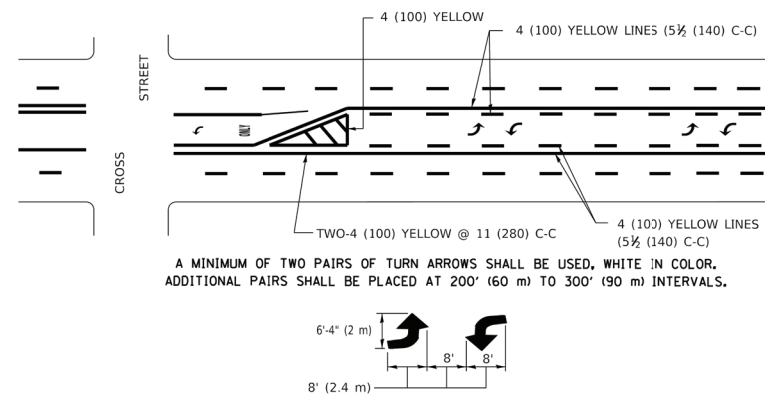


4' (1.2 m) WIDE MEDIANS ONLY



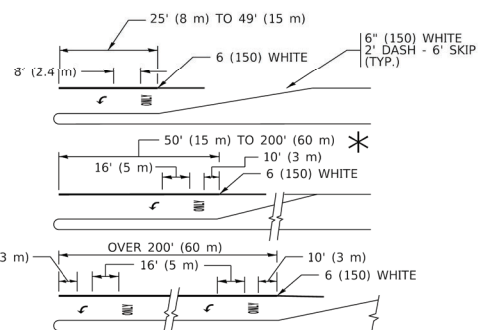
MEDIANS OVER 4' (1.2 m) WIDE

DIAGONAL LINE SPACING: 50' (15 m) C-C (LESS THAN 30MPH (50 km/h))
75' (25 m) C-C 30MPH (50 km/h) TO 45MPH (70 km/h)
150' (45 m) C-C (MORE THAN 45MPH (70 km/h))



MEDIAN WITH TWO-WAY LEFT TURN LANE

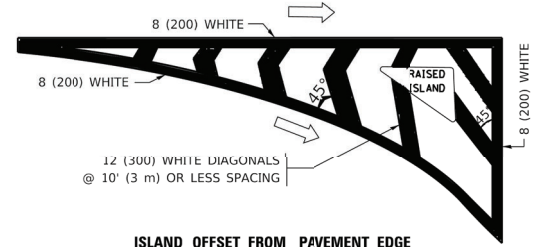
TYPICAL PAINTED MEDIAN MARKING



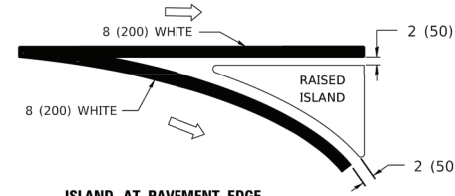
TYPICAL LEFT (OR RIGHT) TURN LANE

TYPICAL TURN LANE MARKING

FULL SIZE LETTERS 8' (2.4 m) AND ARROWS SHALL BE USED.
AREA = 15.6 SQ. FT. (1.5 m²) ONLY AREA = 20.8 SQ. FT. (1.9 m²)
* TURN LANES IN EXCESS OF 400' (120 m) IN LENGTH MAY HAVE AN ADDITIONAL SET OF ARROW - "ONLY" INSTALLED MIDWAY BETWEEN THE OTHER TWO SETS OF ARROW - "ONLY".

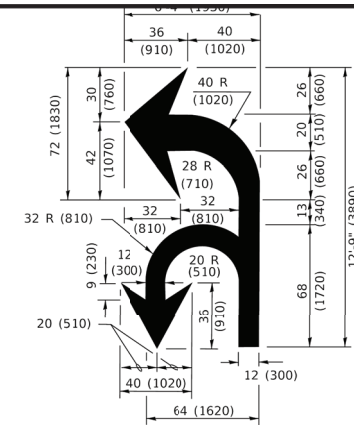


ISLAND OFFSET FROM PAVEMENT EDGE

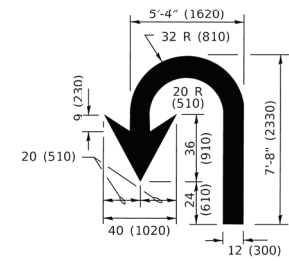


ISLAND AT PAVEMENT EDGE

TYPICAL ISLAND MARKING



COMBINATION LEFT AND U-TURN



U-TURN

LANE REDUCTION TRANSITION

* LANE REDUCTION ARROWS REQUIRED AT SPEEDS OF 45 MPH OR GREATER OR WHEN SPECIFIED IN PLANS.

D(FT)	SPEED LIMIT
345	30
425	35
500	40
580	45
665	50
750	55

TYPE OF MARKING	WIDTH OF LINE	PATTERN	COLOR	SPACING / REMARKS
CENTERLINE ON 2 LANE PAVEMENT	4 (100)	SKIP-DASH	YELLOW	10' (3 m) LINE WITH 30' (9 m) SPACE
CENTERLINE ON MULTI-LANE UNDIVIDED PAVEMENT	2 @ 4 (100)	SOLID	YELLOW	11 (280) C-C
NO PASSING ZONE LINES: FOR ONE DIRECTION FOR BOTH DIRECTIONS	4 (100) 2 @ 4 (100)	SOLID SOLID	YELLOW YELLOW	5 1/2 (140) C-C FROM SKIP-DASH CENTERLINE 11 (280) C-C OMIT SKIP-DASH CENTERLINE BETWEEN
LANE LINES	4 (100) 5 (125) ON FREEWAYS	SKIP-DASH SKIP-DASH	WHITE WHITE	10' (3 m) LINE WITH 30' (9 m) SPACE
DOTTED LINES (EXTENSIONS OF CENTER, LANE OR TURN LANE MARKINGS)	SAME AS LINE BEING EXTENDED	SKIP-DASH	SAME AS LINE BEING EXTENDED	2' (600) LINE WITH 6' (1.8 m) SPACE
EDGE LINES	4 (100)	SOLID	YELLOW-LEFT WHITE-RIGHT	OUTLINE MEDIANS IN YELLOW
TURN LANE MARKINGS	6 (150) LINE; FULL SIZE LETTERS & SYMBOLS (8' (2.4m))	SOLID	WHITE	SEE TYPICAL TURN LANE MARKING DETAIL
TWO WAY LEFT TURN MARKING	2 @ 4 (100) EACH DIRECTION 8' (2.4m) LEFT ARROW	SKIP-DASH AND SOLID IN PAIRS	YELLOW WHITE	10' (3 m) LINE WITH 30' (9 m) SPACE FOR SKIP-DASH; 5 1/2 (140) C-C BETWEEN SOLID LINE AND SKIP-DASH LINE SEE TYPICAL TWO-WAY LEFT TURN MARKING DETAIL
CROSSWALK LINES (PEDESTRIAN) A. DIAGONALS (BIKE & EQUESTRIAN) B. LONGITUDINAL BARS (SCHOOL)	2 @ 6 (150) 12 (300) @ 45° 12 (300) @ 90°	SOLID SOLID SOLID	WHITE WHITE WHITE	NOT LESS THAN 6' (1.8 m) APART 2' (600) APART 2' (600) APART SEE TYPICAL CROSSWALK MARKING DETAILS.
STOP LINES	24 (600)	SOLID	WHITE	PLACE 4' (1.2 m) IN ADVANCE OF AND PARALLEL TO CROSSWALK, IF PRESENT. OTHERWISE, PLACE AT DESIRED STOPPING POINT, PARALLEL TO CROSSROAD CENTERLINE, WHERE POSSIBLE
PAINTED MEDIANS	2 @ 4 (100) WITH 12 (300) DIAGONALS @ 45° NO DIAGONALS USED FOR 4' (1.2 m) WIDE MEDIANS	SOLID	YELLOW: TWO WAY TRAFFIC WHITE: ONE WAY TRAFFIC	11 (280) C-C FOR THE DOUBLE LINE SEE TYPICAL PAINTED MEDIAN MARKING.
GORE MARKING AND CHANNELIZING LINES	8 (200) WITH 12 (300) DIAGONALS @ 45°	SOLID	WHITE	DIAGONALS: 15' (4.5 m) C-C (LESS THAN 30MPH (50 km/h)) 20' (6 m) C-C 30MPH (50 km/h) TO 45MPH (70 km/h) 30' (9 m) C-C (OVER 45MPH (70 km/h))
RAILROAD CROSSING	24 (600) TRANSVERSE LINES; "RR" IS 6' (1.8 m) LETTERS; 16 (400) LINE FOR "X"	SOLID	WHITE	SEE STATE STANDARD 780001 AREA OF: "R"=3.6 SQ. FT. (0.33 m ²) EACH "X"=54.0 SQ. FT. (5.0 m ²)
SHOULDER DIAGONALS (REQUIRED FOR SHOULDERS ≥ 8')	12 (300) @ 45°	SOLID	WHITE - RIGHT YELLOW - LEFT	50' (15 m) C-C (LESS THAN 30MPH (50 km/h)) 75' (25 m) C-C (30 MPH (50 km/h) TO 45MPH (70 km/h)) 150' (45 m) C-C (OVER 45MPH (70 km/h))
U TURN ARROW	SEE DETAIL	SOLID	WHITE	16.3 SF
2 ARROW COMBINATION LEFT AND U TURN	SEE DETAIL	SOLID	WHITE	30.4 SF

FOR FURTHER DETAILS ON PAVEMENT MARKING REFER TO STANDARD SPECIFICATIONS FOR ROAD AND BRIDGE CONSTRUCTION AND STATE STANDARD 780001.

All dimensions are in inches (millimeters) unless otherwise shown.

Drawing file: W:\Projects_by_Village\Schiller Park\80018287 - 25TH AVE\DOT Standard.dwg Jan 15, 2024 - 11:29am

USER NAME = footemj	DESIGNED - EVERS	REVISED - C. JUCIUS 09-09-09
PLOT SCALE = 50.0000' / in.	CHECKED -	REVISED - C. JUCIUS 07-01-13
PLOT DATE = 3/4/2019	DATE - 03-19-90	REVISED - C. JUCIUS 12-21-15
		REVISED - C. JUCIUS 04-12-16

STATE OF ILLINOIS DEPARTMENT OF TRANSPORTATION

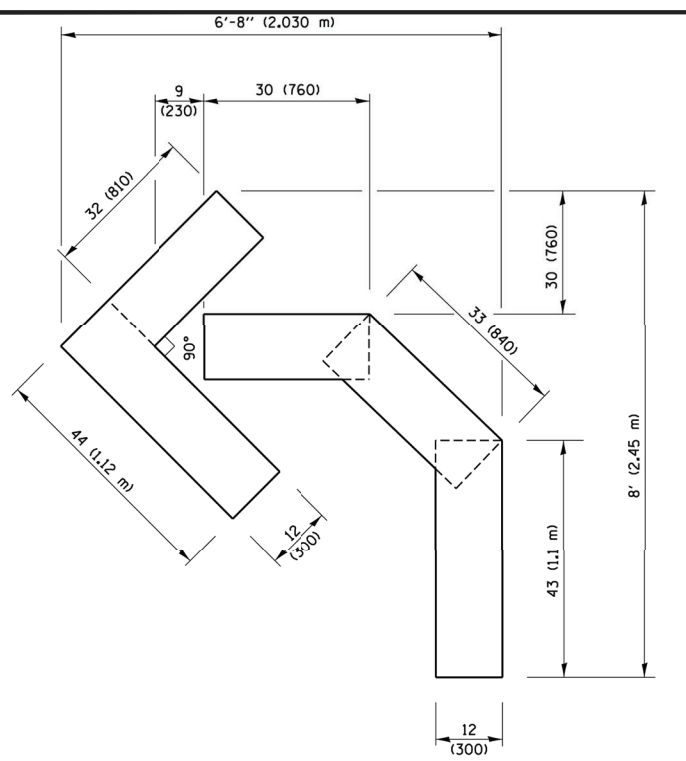
DISTRICT ONE TYPICAL PAVEMENT MARKINGS

SCALE: NONE SHEET 1 OF 2 SHEETS STA. TO STA.

F.A.U. RTE.	SECTION	COUNTY	TOTAL SHEETS	SHEET NO.
2714	23-00089-00-RS	COOK	23	18
TG-13		CONTRACT NO. 61K29		
FED. ROAD DIST. NO. 1 ILLINOIS		FED. AID PROJECT		

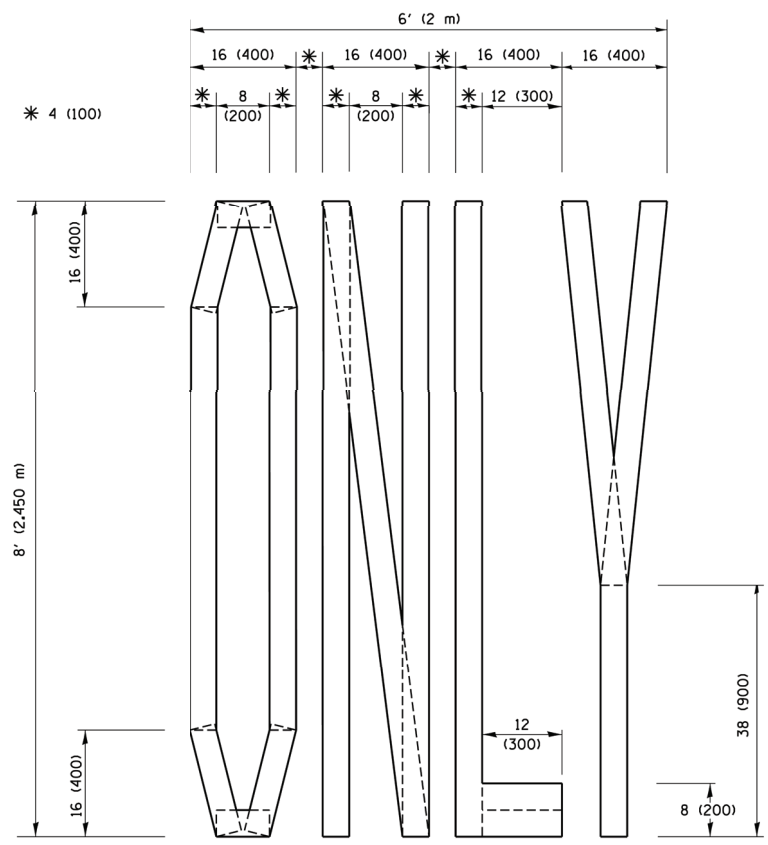
E.H.E. PROJECT NO. 800-18-28701

Drawing file: W:\Projects_by_Village\Schiller Park\80018287 - 25TH AVE\DOT Standard.dwg Jun 15, 2024 - 11:29am



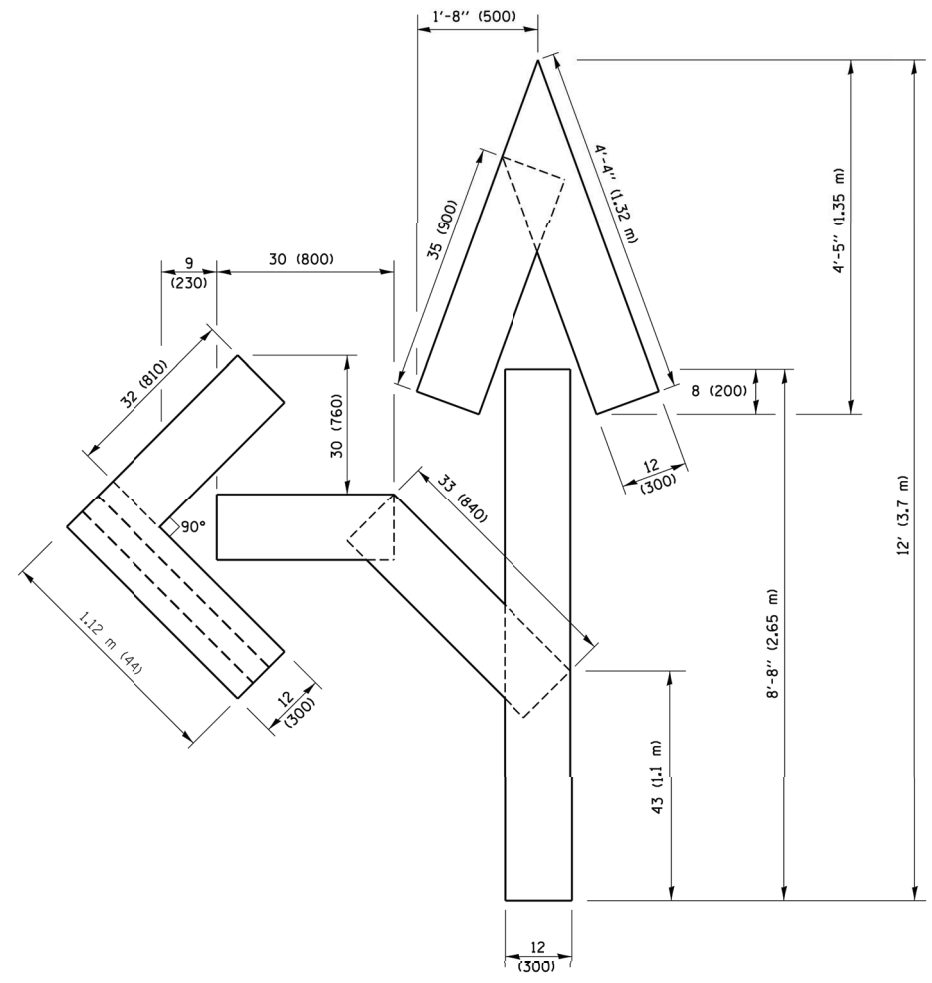
QUANTITY

4 (100) LINE = 45.5 ft. (13.9 m)
15.2 sq. ft. (1.41 sq. m)



QUANTITY

4 (100) LINE = 64.1 ft. (19.5 m)
21.4 sq. ft. (1.99 sq. m)

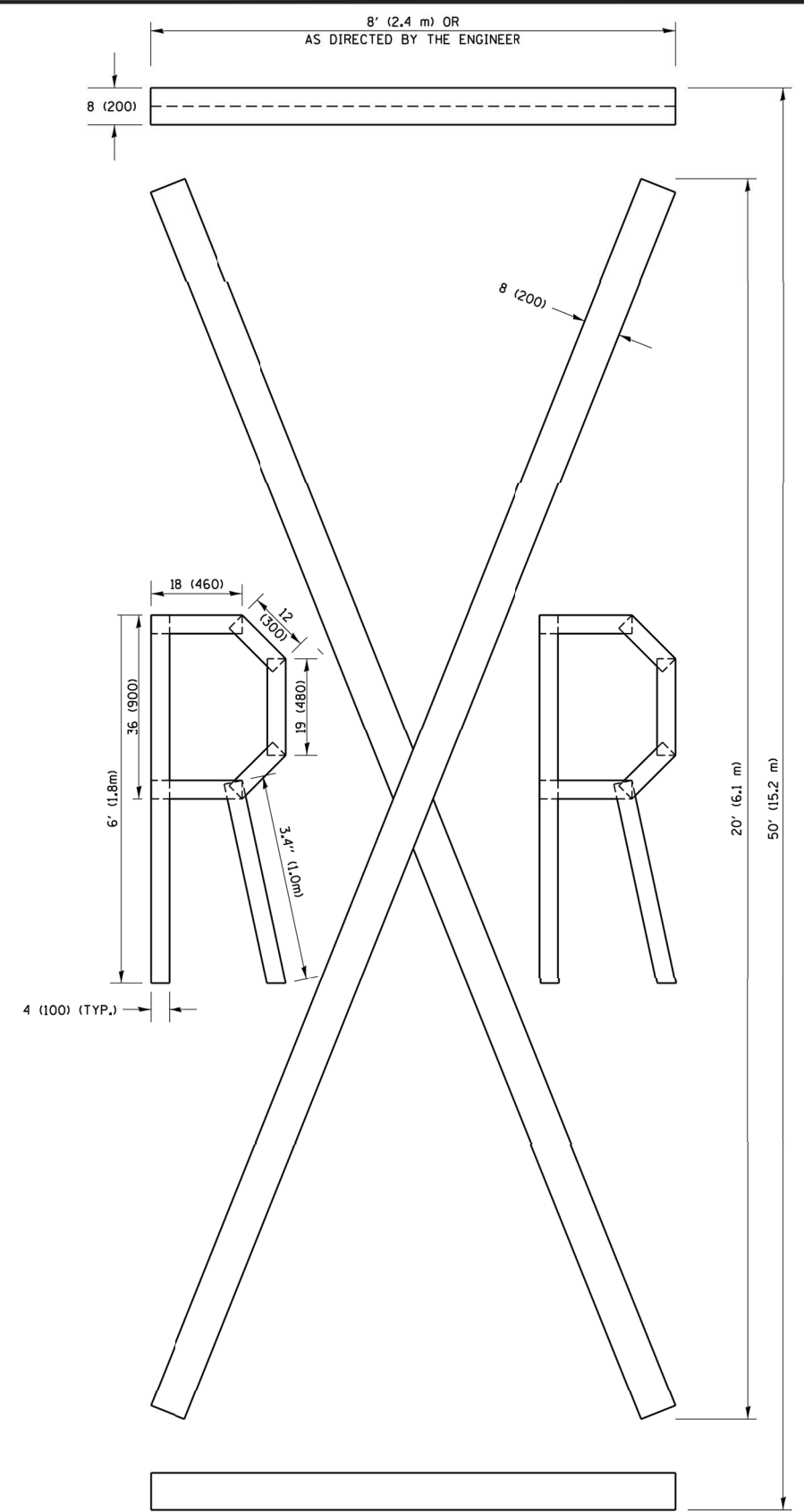


QUANTITY

4 (100) LINE = 82.5 ft. (25.1 m)
27.5 sq. ft. (2.53 sq. m)

NOTE:

ALL QUANTITIES OF PLACEMENT ARE REPRESENTED IN LINEAR FEET OF 4" LINES TO MATCH THE 4" TEMPORARY TAPE PAY ITEM AND REPRESENTS THE TOTAL QUANTITY OF 4" TAPE REQUIRED.



QUANTITY

4 (100) LINE = 225.9 ft. (68.9 m)
75.3 sq. ft. (6.99 sq. m)

All dimensions are in inches (millimeters) unless otherwise shown.

FILE NAME =	USER NAME = Footemj	DESIGNED -	REVISED -T. RAMMACHER 03-02-98
pw:\IL084EBID\INTEG\Illinois.gov\PIWIDOT\Documents\IDOT Offices\District 1\Projects\Dist		DRAWN\CADDData\CADsheets\tcl6.dgn	REVISED -E. GOMEZ 08-28-00
PLOT SCALE = 50.0000' / in.		CHECKED -	REVISED -E. GOMEZ 08-28-00
PLOT DATE = 9/15/2016		DATE - 09-18-94	REVISED -A. SCHUETZE 09-15-16

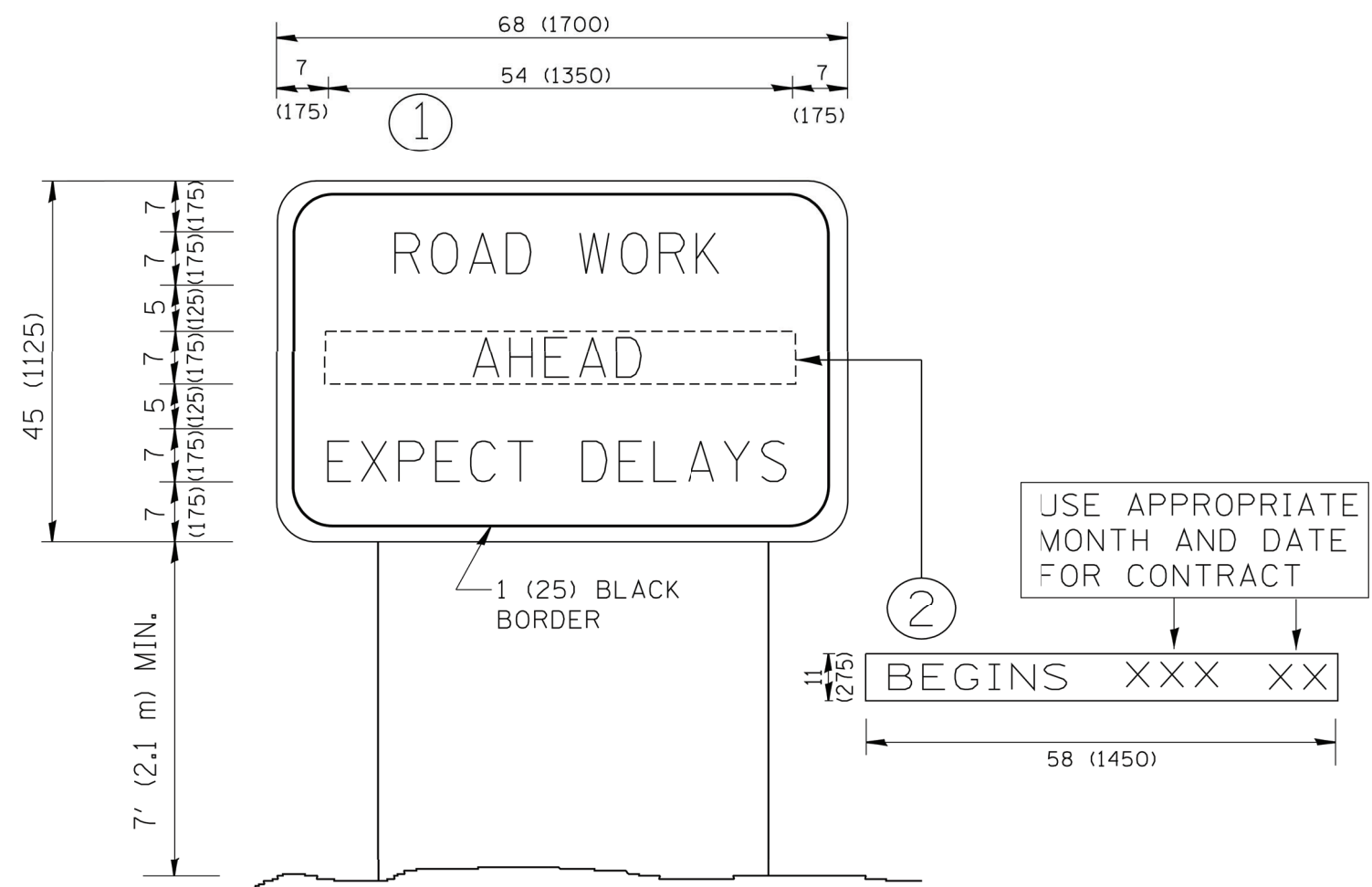
**STATE OF ILLINOIS
DEPARTMENT OF TRANSPORTATION**

SHORT TERM PAVEMENT MARKING LETTERS AND SYMBOLS

SCALE: NONE SHEET NO. 1 OF 1 SHEETS STA. TO STA.

F.A.U. RTE.	SECTION	COUNTY	TOTAL SHEETS	SHEET NO.
2714	23-00089-00-RS	COOK	23	19
TC-16		CONTRACT NO.		61K29
FED. ROAD DIST. NO. 1 ILLINOIS		FED. AID PROJECT		

Drawing file: W:\Projects_by_Village\Schiller Park\80018287 - 25TH AVE\DOT Standard.dwg Jan 15, 2024 - 11:30am



NOTES:

1. USE BLACK LETTERING ON ORANGE BACKGROUND.
2. ERECT SIGNS IN ADVANCE OF THE LOCATION FOR THE "ROAD CONSTRUCTION AHEAD" SIGN AT LOCATIONS AS DIRECTED BY THE ENGINEER.
3. ERECT SIGN ① WITH INSTALLED PANEL ② ONE WEEK PRIOR TO THE START OF CONSTRUCTION.
4. REMOVE PANEL ② SOON AFTER THE START OF CONSTRUCTION.
5. SEE SPECIAL PROVISION FOR "TEMPORARY INFORMATION SIGNING" FOR ADDITIONAL INFORMATION.
6. ONE SIGN ASSEMBLY EQUALS 25.70 SQ. FT. (2.3 SQ. M.)
7. SHALL BE PAID FOR AS TEMPORARY INFORMATION SIGNING.

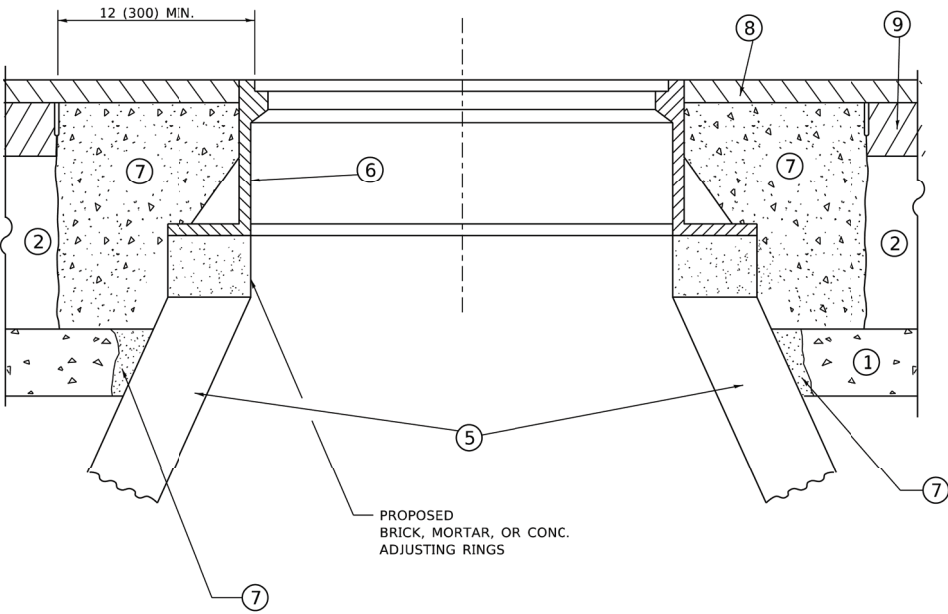
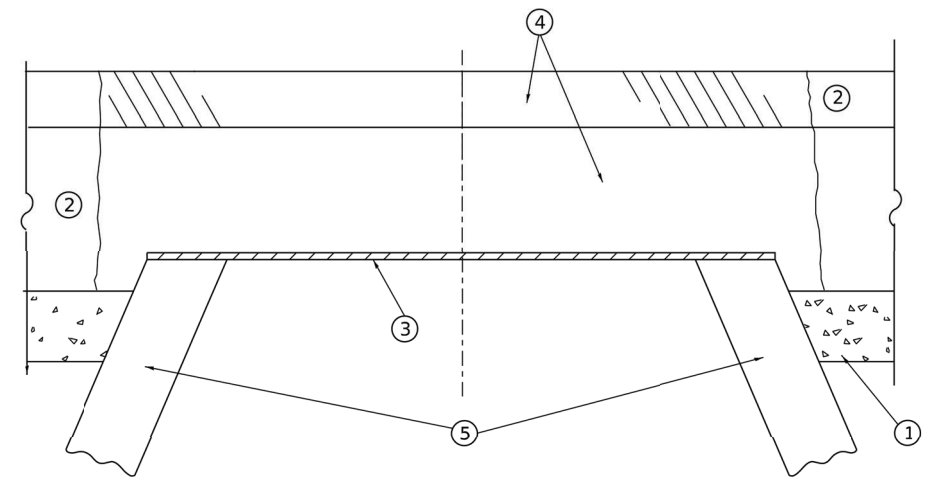
ALL DIMENSIONS ARE IN INCHES (MILLIMETERS) UNLESS OTHERWISE SHOWN.

FILE NAME = W:\diststd\22x34\tc22.dgn	USER NAME = gaglionobt	DESIGNED - DRAWN -	REVISED - REVISED -
PLOT SCALE = 50.000' / IN.	CHECKED -	REVISED - T. RAMMACHER 02-02-99	REVISED - R. MIRS 09-15-97
PLOT DATE = 1/4/2008	DATE -	REVISED - C. JUCIUS 01-31-07	REVISED - R. MIRS 12-11-97

**STATE OF ILLINOIS
DEPARTMENT OF TRANSPORTATION**

ARTERIAL ROAD INFORMATION SIGN	
SCALE: NONE	SHEET NO. 1 OF 1 SHEETS
STA.	TO STA.

F.A.U. RTE. 2714	SECTION 23-00089-00-RS	COUNTY COOK	TOTAL SHEETS 23	SHEET NO. 20
TC-22		CONTRACT NO. 61K29		
FED. ROAD DIST. NO. 1 ILLINOIS		FED. AID PROJECT		



DETAILS FOR FRAMES AND LIDS ADJUSTMENT WITH MILLING

NOTES

1. EXISTING BROKEN FRAMES AND LIDS SHALL BE REMOVED AND DISPOSED OF BY THE CONTRACTOR AND SHALL BE REPLACED AS DIRECTED BY THE ENGINEER. REPLACEMENT FRAMES AND LIDS WILL BE PAID FOR IN ACCORDANCE WITH ARTICLE 109.04 OF THE STANDARD SPECIFICATIONS UNLESS A SEPARATE PAY ITEM HAS BEEN PROVIDED.
2. IF THE EXISTING LIDS ARE OPEN, THE FRAME WILL BE ADJUSTED TO THE ELEVATION OF THE MILLED PAVEMENT SURFACE PRIOR TO THE MILLING OPERATION. THE FRAME WILL NOT BE REMOVED AND COVERED BY THE METAL PLATE.
3. CITY OF CHICAGO CASTINGS ARE THE PROPERTY OF THE CITY AND THE CONTRACTOR SHALL NOTIFY THE CITY FOR REMOVAL AND DISPOSITION OF THE CASTINGS.
4. THE METAL PLATE USED TO COVER THE STRUCTURE SHALL REMAIN THE PROPERTY OF THE CONTRACTOR.
5. THE CONTRACTOR SHALL REMOVE ALL TRAFFIC CONTROL DEVICES BY THE END OF EACH WORK SHIFT.

CONSTRUCTION PROCEDURES

- STAGE 1 (BEFORE PAVEMENT MILLING)**
- A) REMOVE A MINIMUM OF 12 (300) OF THE PAVEMENT FROM AROUND THE STRUCTURE.
 - B) REMOVE THE EXISTING FRAME AND LID FROM THE STRUCTURE.
 - C) COVER THE STRUCTURE OPENING WITH A 36 (900) DIAMETER METAL PLATE.
 - D) BACKFILL WITH CRUSHED STONE AND HMA SURFACE MIX APPROVED BY THE ENGINEER. (MIN. 3 (80) HMA TO REMAIN AFTER MILLING).
- STAGE 2 (AFTER PAVEMENT MILLING)**
- A) REMOVE THE HMA SURFACE MIX AND CRUSHED STONE.
 - B) INSTALL THE FRAME AND LID; ADJUST THE FRAME TO ITS FINAL SURFACE ELEVATION.
 - C) THE SURROUNDING SPACE SHALL BE FILLED WITH CLASS PP-2* CONCRETE TO THE ELEVATION OF THE SURFACE OF THE EXISTING BASE COURSE OR THE BINDER COURSE.
- * UNLESS OTHERWISE SPECIFIED IN THE PLANS.

THE PROCEDURE EXPLAINED ABOVE SHALL CONFORM TO THE APPLICABLE PORTIONS OF SECTIONS 353, 406, 602, AND 603 OF THE STANDARD SPECIFICATIONS EXCEPT THAT "THE CONTRACTOR SHALL ADJUST THE STRUCTURES TO THE FINISHED PAVEMENT ELEVATION NO MORE THAN 5 CALENDAR DAYS PRIOR TO PLACEMENT OF THE FINAL LIFT OF SURFACE UNLESS APPROVED BY THE ENGINEER."

LEGEND

- | | |
|--|-------------------------------|
| ① SUB-BASE GRANULAR MATERIAL | ⑥ FRAME AND LID (SEE NOTES) |
| ② EXISTING PAVEMENT | ⑦ CLASS PP-2* CONCRETE |
| ③ 36 (900) DIAMETER METAL PLATE | ⑧ PROPOSED HMA SURFACE COURSE |
| ④ PROPOSED CRUSHED STONE AND HMA SURFACE MIX | ⑨ PROPOSED HMA BINDER COURSE |
| ⑤ EXISTING STRUCTURE | |

LOCATION OF STRUCTURES

THE CONTRACTOR WILL BE REQUIRED TO KEEP A RECORD OF THE LOCATIONS OF THE BURIED STRUCTURES ACCORDING TO THE STATION AND DISTANCE LEFT OR RIGHT OF THE CENTERLINE OF PAVEMENT. UPON COMPLETION OF THE WORK, THE CONTRACTOR WILL DELIVER THE RECORD TO THE ENGINEER.

BASIS OF PAYMENT

1. REMOVING FRAMES AND LIDS ON DRAINAGE AND UTILITY STRUCTURES IN THE PAVEMENT PRIOR TO MILLING, AND ADJUSTING TO FINAL GRADE PRIOR TO PLACING THE SURFACE COURSE, WILL BE PAID FOR AT THE CONTRACT UNIT PRICE EACH FOR *FRAMES AND LIDS TO BE ADJUSTED (SPECIAL)."
2. THIS WORK WILL NOT BE PAID FOR WHEN DRAINAGE AND UTILITY STRUCTURES ARE SPECIFIED FOR PAYMENT AS STRUCTURE RECONSTRUCTION.
3. NEW FRAMES AND LIDS, WHEN SPECIFIED, WILL BE PAID FOR SEPARATELY.
4. WHEN STRUCTURES ARE TO BE ADJUSTED OR RECONSTRUCTED, THE LOWERING AND RAISING OF THE FRAMES AND LIDS WILL NOT BE PAID FOR SEPARATELY BUT WILL BE INCLUDED IN THE COST OF THE CORRESPONDING PAY ITEM.

ALL DIMENSIONS ARE IN INCHES (MILLIMETERS) UNLESS OTHERWISE SHOWN

Drawing file: W:\Projects_by_Village\Schiller Park\80018287 - 25TH AVE\DOT Standard.dwg Jan 15, 2024 - 11:30am

USER NAME = Lawrence.DeManche	DESIGNED - R. SHAH	REVISED - R. BORC 03-09-11
	DRAWN -	REVISED - R. BORC 12-06-11
PLOT SCALE = 100.0000 ' / in.	CHECKED -	REVISED - K. SMITH 11-18-22
PLOT DATE = 9/15/2023	DATE - 10-25-94	REVISED - K. SMITH 09-15-23

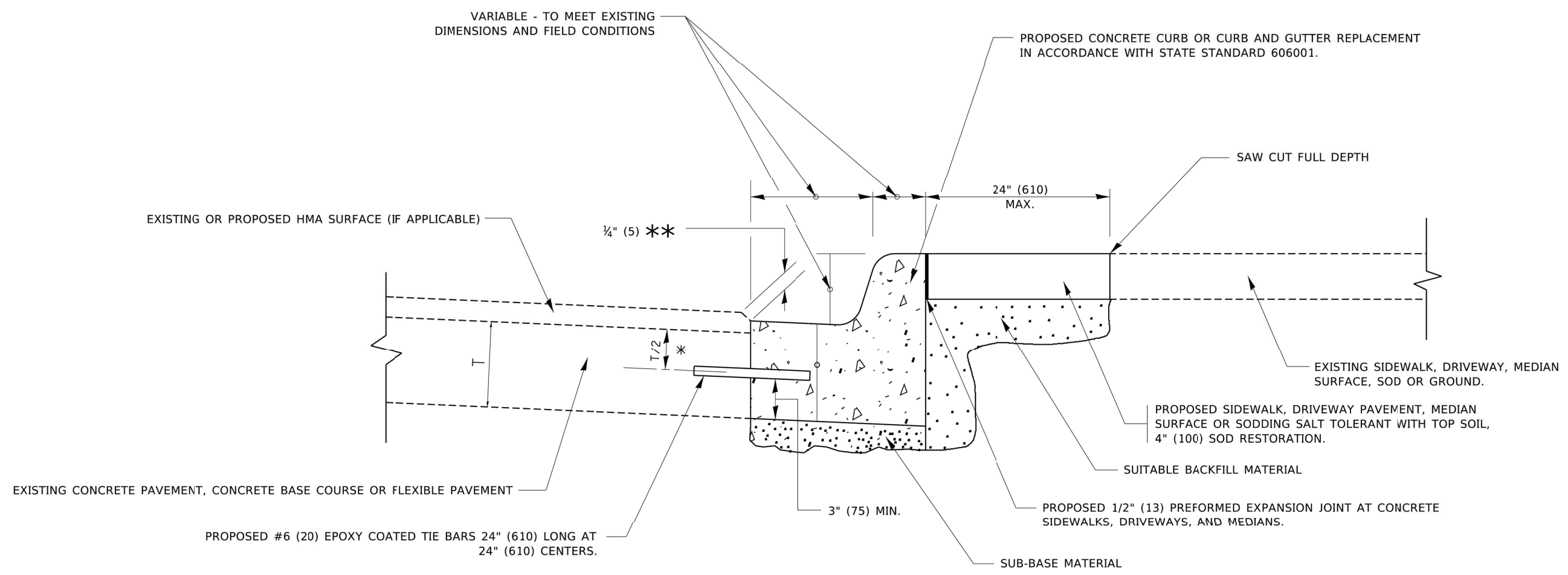
**STATE OF ILLINOIS
DEPARTMENT OF TRANSPORTATION**

**DETAILS FOR
FRAMES AND LIDS ADJUSTMENT WITH MILLING**

SCALE: NONE SHEET 1 OF 1 SHEETS STA. TO STA.

F.A.U. RTE.	SECTION	COUNTY	TOTAL SHEETS	SHEET NO.
2714	23-00089-00-RS	COOK	23	21
BD600-03 (BD-24)		CONTRACT NO.	61K29	
FED. ROAD DIST. NO. 1 ILLINOIS		FED. AID PROJECT		

Drawing file: W:\Projects_by_Village\Schiller Park\80018287 - 25TH AVE\DOT Standard.dwg Jan 15, 2024 - 11:31am



- * 3" (75) MINIMUM FROM TOP AND BOTTOM OF THE CONCRETE PAVEMENT OR BASE COURSE.
- ** IF THE FINAL SURFACE OF THE PAVEMENT IS CONCRETE, THE GUTTER IS TO BE FLUSH WITH THE PAVEMENT.

CURB OR CURB AND GUTTER REMOVAL AND REPLACEMENT

ALL DIMENSIONS ARE IN INCHES (MILLIMETERS) UNLESS OTHERWISE SHOWN.

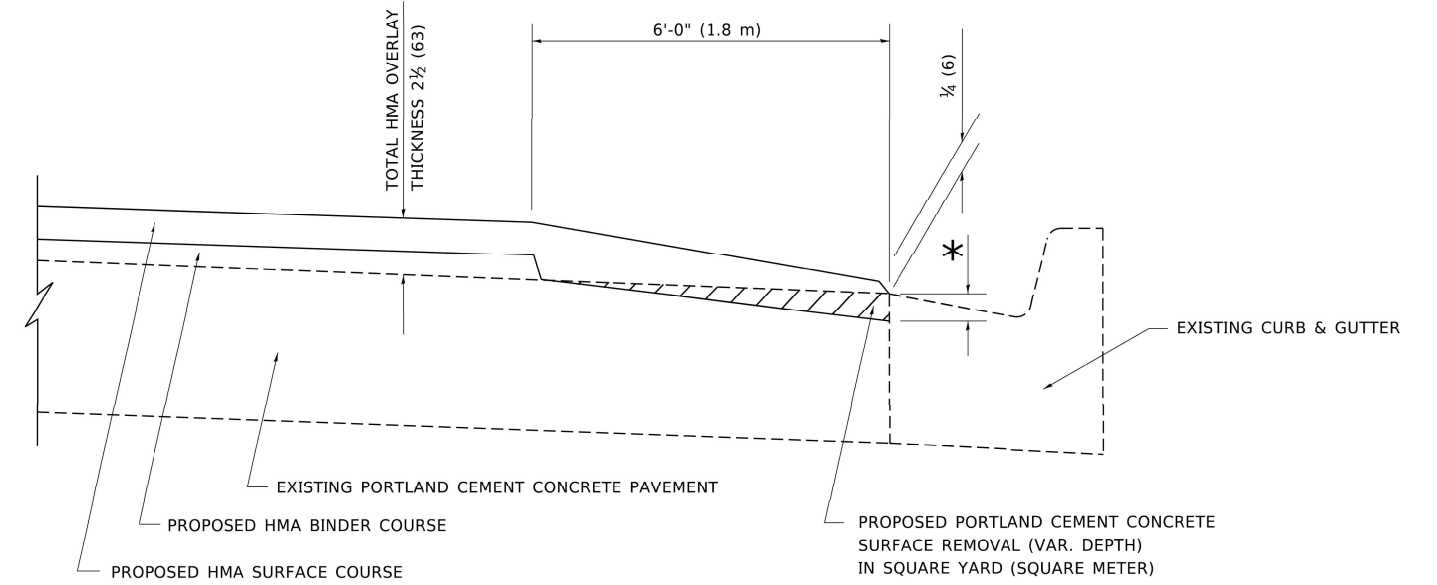
USER NAME = footemj	DESIGNED - A. HOUSEH	REVISED - A. ABBAS 03-21-97
	DRAWN -	REVISED - M. GOMEZ 01-22-01
PLOT SCALE = 50.0000' / in.	CHECKED -	REVISED - R. BORO 12-15-09
PLOT DATE = 7/11/2019	DATE - 03-11-94	REVISED - K. SMITH 07-11-19

**STATE OF ILLINOIS
DEPARTMENT OF TRANSPORTATION**

CURB OR CURB AND GUTTER REMOVAL AND REPLACEMENT			
SCALE: NONE	SHEET 1	OF 1 SHEETS	STA. TO STA.

F.A.U. RTE.	SECTION	COUNTY	TOTAL SHEETS	SHEET NO.
2714	23-00089-00-RS	COOK	23	22
BD600-03 (BD-24)		CONTRACT NO. 61K29		
FED. ROAD DIST. NO. 1		ILLINOIS		FED. AID PROJECT

Drawing file: W:\Projects_by_Village\Schiller Park\80015287 - 25TH AVE\DOT_Standards.dwg Feb 09, 2024 - 8:02am



**HMA TAPER AT
EDGE OF P.C.C. PAVEMENT**

HMA SURFACE COURSE		HMA BINDER COURSE		* MILLING AT GUTTER FLAG
MIX	THICKNESS	THICKNESS		
D	1 1/2 (38)	1 (25)	1 1/4 (33)	
E OR SMA 9.5	1 3/4 (44)	3/4 (19)	1 1/2 (38)	

ALL DIMENSIONS ARE IN INCHES (MILLIMETERS) UNLESS OTHERWISE SHOWN.

USER NAME = Shawn.Ley	DESIGNED - R. SHAH	REVISED - E. GOMEZ 12-21-00
	DRAWN - JIS	REVISED - R. BORO 01-01-07
PLOT SCALE = 50.0000' / in.	CHECKED - A. ABBAS	REVISED - JP CHANG 07-08-16
PLOT DATE = 1/23/2023	DATE - 09-10-94	REVISED - K. SMITH 11-18-22

**STATE OF ILLINOIS
DEPARTMENT OF TRANSPORTATION**

HMA TAPER AT EDGE OF P.C.C. PAVEMENT			
SCALE: NONE	SHEET 1	OF 1 SHEETS	STA. TO STA.

F.A.U. RTE.	SECTION	COUNTY	TOTAL SHEETS	SHEET NO.
2714	23-00089-00-RS	COOK	23	23
BD600-03 (BD-33)		CONTRACT NO. 61K29		
FED. ROAD DIST. NO. 1		ILLINOIS FED. AID PROJECT		

E.H.E. PROJECT NO. 800-18-28701