

CODE NO.	ITEM	UNIT	TOTAL QUANTITY	CONSTRUCTION CODE	
				NHPP	STP
				80% FEDERAL 20% STATE ROADWAY 0021 URBAN	80% FEDERAL 20% STATE ROADWAY 0021 URBAN
* 87900200	DRILL EXISTING HANDHOLE	EACH	5	5	
* 88102810	PEDESTRIAN SIGNAL HEAD, POLYCARBONATE, LED, 1-FACE, BRACKET MOUNTED	EACH	3	3	
* 88102850	PEDESTRIAN SIGNAL HEAD, POLYCARBONATE, LED, 3-FACE, BRACKET MOUNTED	EACH	1	1	
* 88800100	PEDESTRIAN PUSH-BUTTON	EACH	5	5	
* 89500100	RELOCATE EXISTING SIGNAL HEAD	EACH	2	2	
* 89500400	RELOCATE EXISTING PEDESTRIAN PUSH-BUTTON	EACH	2	2	
* 89502200	MODIFY EXISTING CONTROLLER	EACH	2	2	
* 89502210	MODIFY EXISTING CONTROLLER CABINET	EACH	2	2	
* 89502350	REMOVE AND REINSTALL ELECTRIC CABLE FROM CONDUIT	FOOT	4184	4184	
* 89502376	REBUILD EXISTING HANDHOLE	EACH	3	3	
89502385	REMOVE EXISTING CONCRETE FOUNDATION	EACH	1	1	
X0327979	PAVEMENT MARKING REMOVAL - GRINDING	SQ FT	2093	1920	173
X0327980	PAVEMENT MARKING REMOVAL - WATER BLASTING	SQ FT	2093	1920	173
* X1400031	REMOVE PEDESTRIAN PUSH-BUTTON	EACH	1	1	
X6660445	RIGHT OF WAY AND PROPERTY CORNERS	EACH	12	12	



* SPECIALTY ITEM

REV. 4-9-2019

MODEL: Default
FILE NAME: P:\IL08A\EBID\NTEG Illinois.gov\PIWIDOT\Documents\DOT Offices\District 8\Projects\0876\86\CAD\Drawn\CD\Sheets\0876\86-ah-500.dgn

USER NAME = humphreysb	DESIGNED -	REVISED -	STATE OF ILLINOIS DEPARTMENT OF TRANSPORTATION	SUMMARY OF QUANTITIES			F.A.P. RTE. 500/594	SECTION 34-1, 127-15W-1, 65-15W-1	COUNTY MADISON	TOTAL SHEETS 38	SHEET NO. 5A
PLOT SCALE = 100.0000' / in.	CHECKED -	REVISED -					SCALE:	SHEET 4	OF 5	SHEETS	STA.
PLOT DATE = 2/22/2019	DATE -	REVISED -		ILLINOIS FED. AID PROJECT							



PAVEMENT MARKING SCHEDULE													PATCHING SCHEDULE						
LOCATION	QUADRANT	TEMPORARY PAVEMENT MARKING		THERMOPLASTIC PAVEMENT MARKING					RAISED REFLECTIVE PAVEMENT MARKER	RAISED REFLECTIVE PAVEMENT MARKER	PAINT PAVEMENT MARKING RAISED MEDIAN	PAVEMENT MARKING REMOVAL GRINDING	TEMPORARY PAVEMENT MARKING REMOVAL	LOCATION	QUADRANT	CLASS B PATCHING 13"	WELDED WIRE REINFORCEMENT	SAW CUTS	
		LINE 12"	LINE 24"	LINE 4"	LINE 8"	LINE 12"	LINE 24"	LETTERS & SYMBOLS								TYPE I	SQ YD	SQ YD	FOOT
IL 159 @ W. PARK ST.	NWQ	97				97						97	97	IL 157 @ MERIDIAN RD.	SWQ				
	NEQ	80				80					80	80	SWQ						
	SWQ	100				100					100	100	SW-ISLAND			4	4	30	
	SEQ					73					73	73	NWQ						
IL 159 @ LINDEN DR.	SWQ	73				100						100	73	TOTAL					
	SEQ	100											100						
IL 159 @ JUNCTION DR.	SWQ	160				160						160	160						
	SEQ																		
IL 159 @ GLEN CARBON	SWQ	153				153						153	153						
	SEQ																		
IL 159 @ GLEN CROSSING RD.	SWQ	36				36						36	36						
	SW-ISLAND		12	140	214	26	12	42.1	2	2	53	282	24						
	SEQ	153				153						153	153						
IL 157 @ W. SCHWARZ ST.	WQ	173				173						173	173						
IL 157 @ CENTER	NWQ	173				173						173	173						
IL 157 @ MERIDIAN RD.	SWQ	53				53						53	53						
	SW-ISLAND				155	186					33	290							
	NWQ	170				170						170	170						
TOTAL		1521	12	140	369	1733	12	43	2	2	86	2093	1545						

SIDEWALK AND MEDIAN SCHEDULE													
LOCATION	QUADRANT	PCC SIDEWALK 4 INCH	DETECTABLE WARNING	PAVEMENT REMOVAL	COMBINATION CURB & GUTTER REMOVAL	SIDEWALK REMOVAL	MEDIAN REMOVAL	DOWEL BARS 1-1/2 INCH	COMBINATION CURB & GUTTER		CONCRETE MEDIAN SURFACE, 4"	CURB REFLECTORS	WATER VALVES TO BE ADJUSTED
									TYPE B-6.06	TYPE B-6.24			
		SQ FT	SQ FT	SQ YD	FOOT	SQ FT	SQ FT	EACH	FOOT	FOOT	SQ FT	EACH	EACH
IL 159 @ W. PARK ST.	NWQ	84	27		37	84		2		37			1
	NEQ	85	25		28	85		2		28			
	SWQ	65	24		32	65		2		32			
	SEQ	72	26		38	72		2		38			
IL 159 @ LINDEN DR.	SWQ	73	14		35	73		2		35			
	SEQ	54	14		24	54		2		24			
IL 159 @ JUNCTION DR.	SWQ	71	18		8	71		2		8			
	SEQ	44	14		6	44		2		6			
IL 159 @ GLEN CARBON RD.	SWQ	53	33		23	53		2		23			
	SEQ	84	26		34	84		2		34			
IL 159 @ GLEN CROSSING RD.	SWQ	65	14		29	65		2		29			
	SW-ISLAND	55	28		56	55	50		50	70	120	18	
	SEQ	62	14		18	62		2		18			
IL 157 @ W. SCHWARZ ST.	WQ	137	10		16	137		2		16			
IL 157 @ CENTER GROVE	NWQ	28	17		7	28		2		7			
IL 157 @ MERIDIAN RD.	SWQ	52	14		21	52		2		21			
	SW-ISLAND	49	45	5	72	49	90	18	31	57	70	17	
	NWQ	30	20		30	30		2		30			
TOTAL		1163	383	5	514	1163	140	50	81	513	190	35	1

REV. 4-9-2019

MODEL: #MODELNAME
FILE: NAME: p:\11\08\EBID\NTEG\Illinois.gov\PWD\DOT\Documents\DOT_Offices\District_B\Projects\0876\86\CADD\Drawings\Sheets\0876\86-sht-schedule.dgn

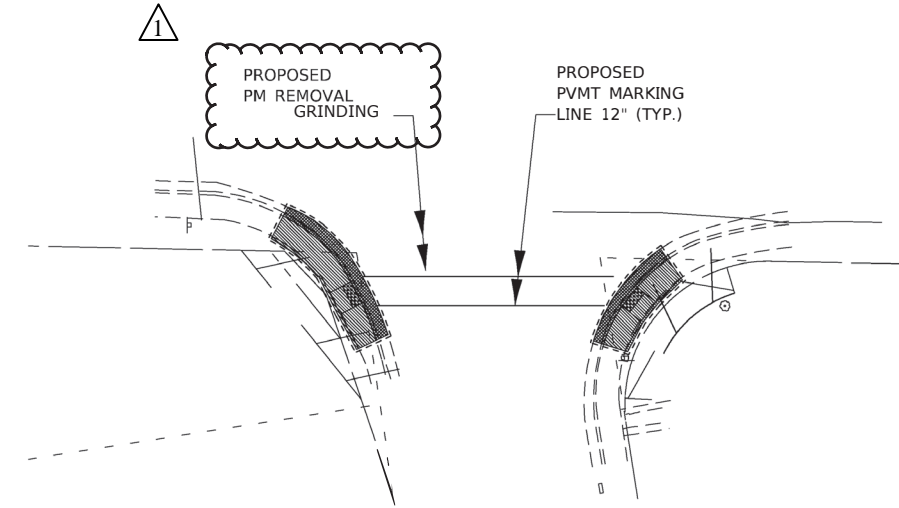
USER NAME = Default	DESIGNED -	REVISED -
	DRAWN -	REVISED -
PLOT SCALE = 100.0000' / in.	CHECKED -	REVISED -
PLOT DATE = 2/1/2019	DATE -	REVISED -

**STATE OF ILLINOIS
DEPARTMENT OF TRANSPORTATION**




SCHEDULES			
SCALE:	SHEET 1	OF 1 SHEETS	STA. TO STA.

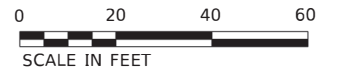
F.A.P. RTE.	SECTION	COUNTY	TOTAL SHEETS	SHEET NO.
600/594	34-1, 127-15W-1, 65-15W-1	MADISON	38	6
				CONTRACT NO. 76J86
ILLINOIS FED. AID PROJECT				

REV. 4-9-2019

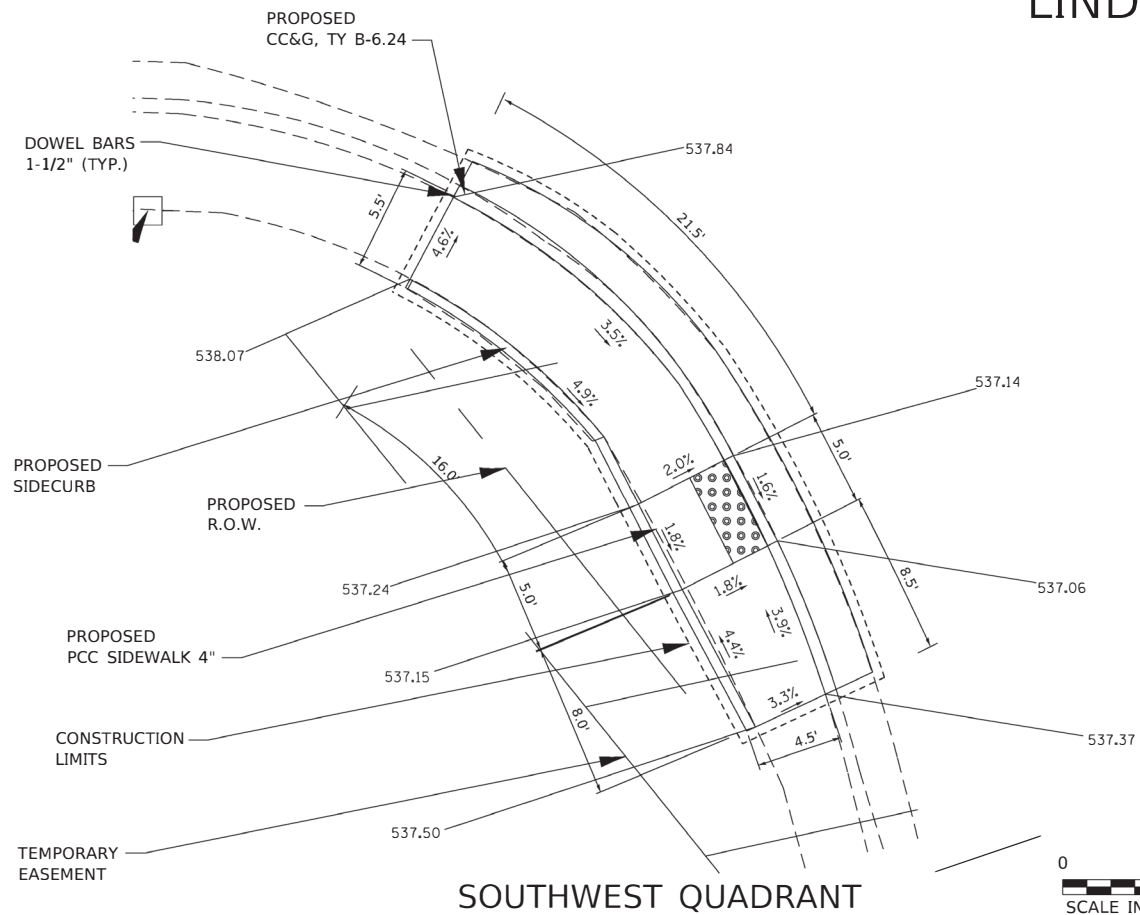


LEGEND

-  DETECTABLE WARNINGS
-  SIDEWALK REMOVAL
-  COMBINATION CONCRETE CURB & GUTTER REMOVAL

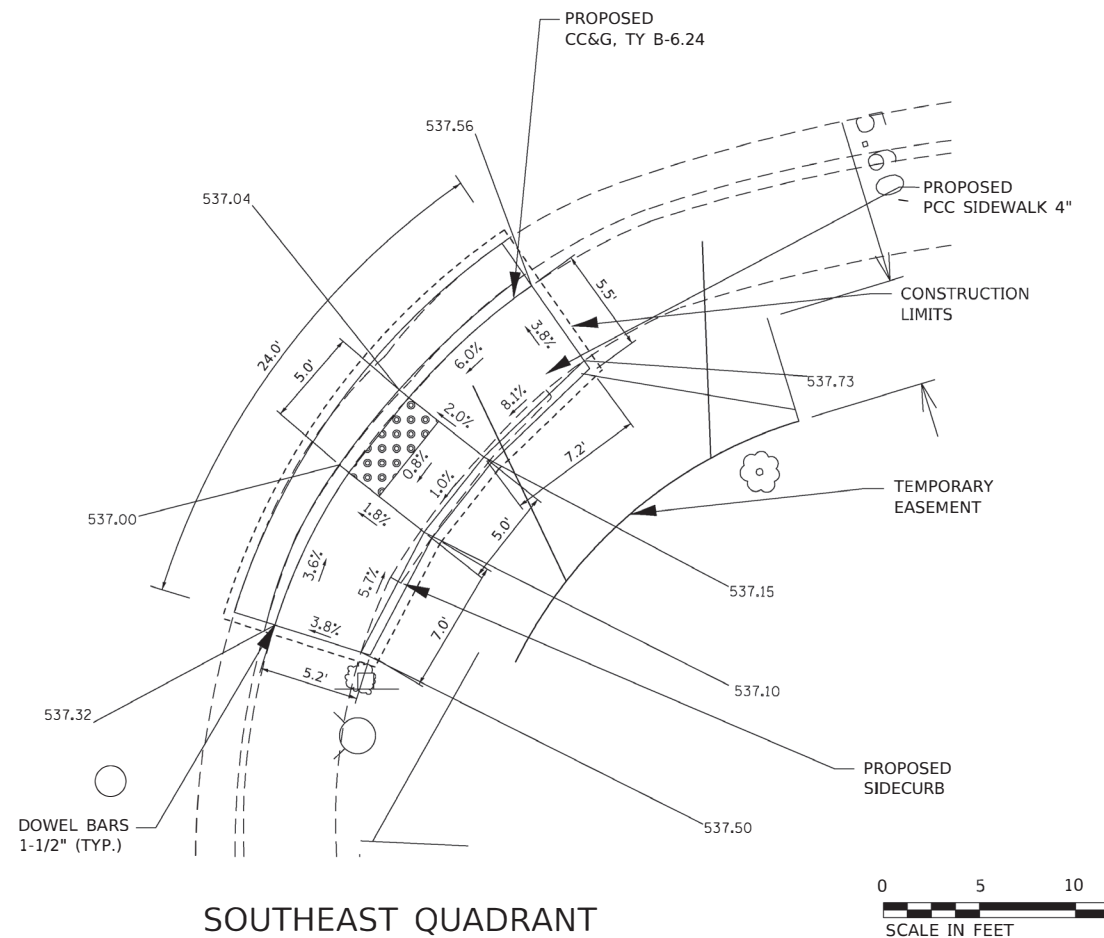


LINDEN DRIVE



SOUTHWEST QUADRANT

IL RTE 159



SOUTHEAST QUADRANT

MODEL: \\MODELNAME; FILE NAME: \\...; PROJECTS: \\...; OFFICE: \\...; DATE: 2/1/2019

USER NAME = Default	DESIGNED -	REVISED -
DRAWN -	REVISIONS -	
PLOT SCALE = 40.0000' / in.	CHECKED -	REVISED -
PLOT DATE = 2/1/2019	DATE -	REVISED -

STATE OF ILLINOIS
DEPARTMENT OF TRANSPORTATION

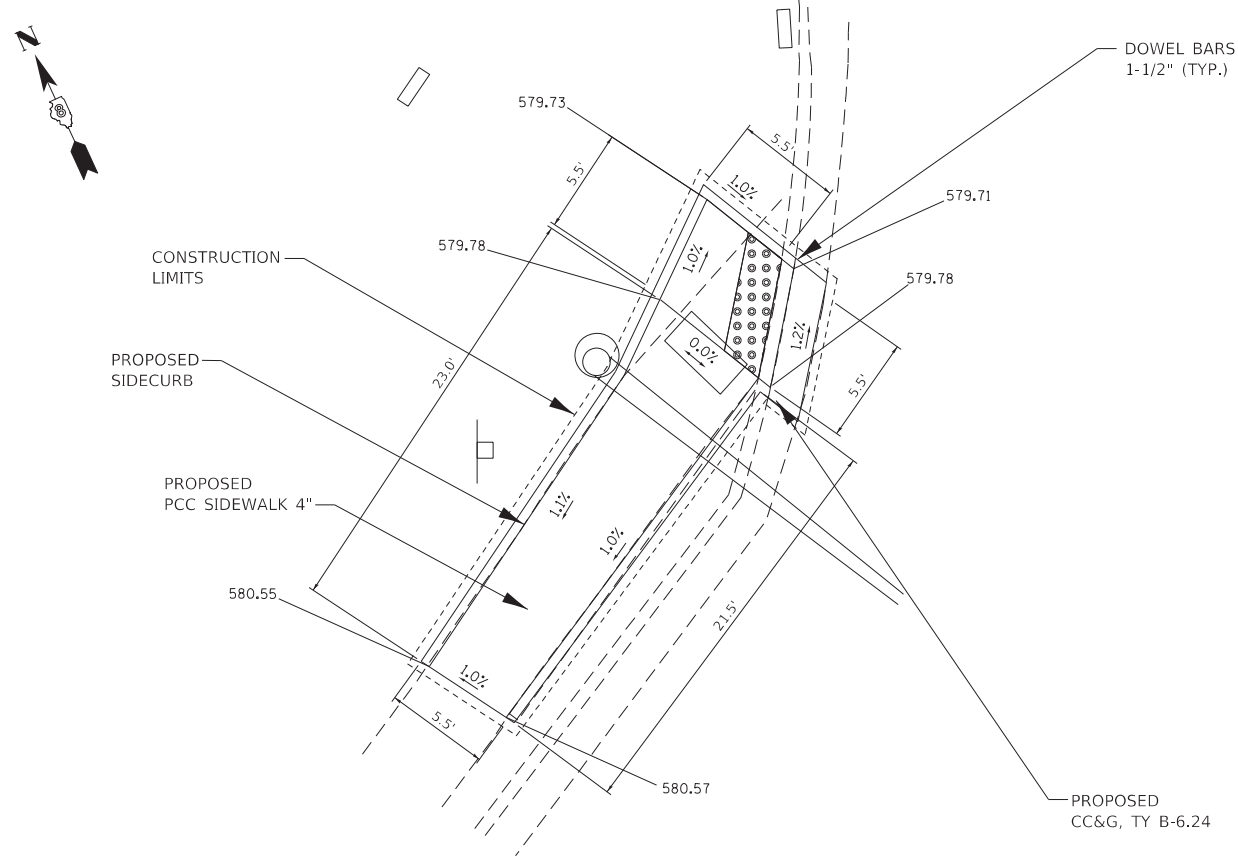
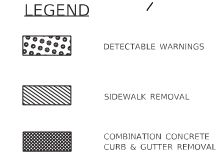
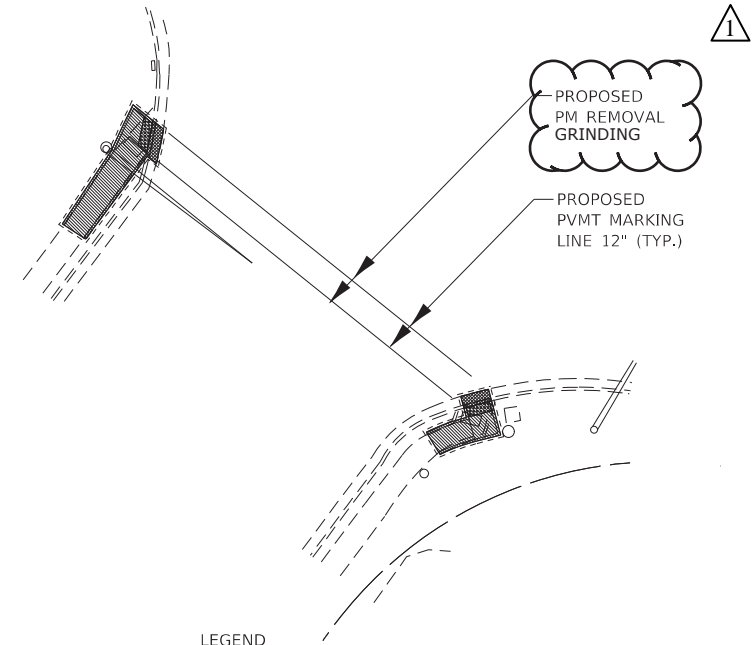
PROPOSED ADA IMPROVEMENTS IL 159 AND LINDEN DR.

SCALE: SHEET 2 OF 8 SHEETS STA. TO STA.

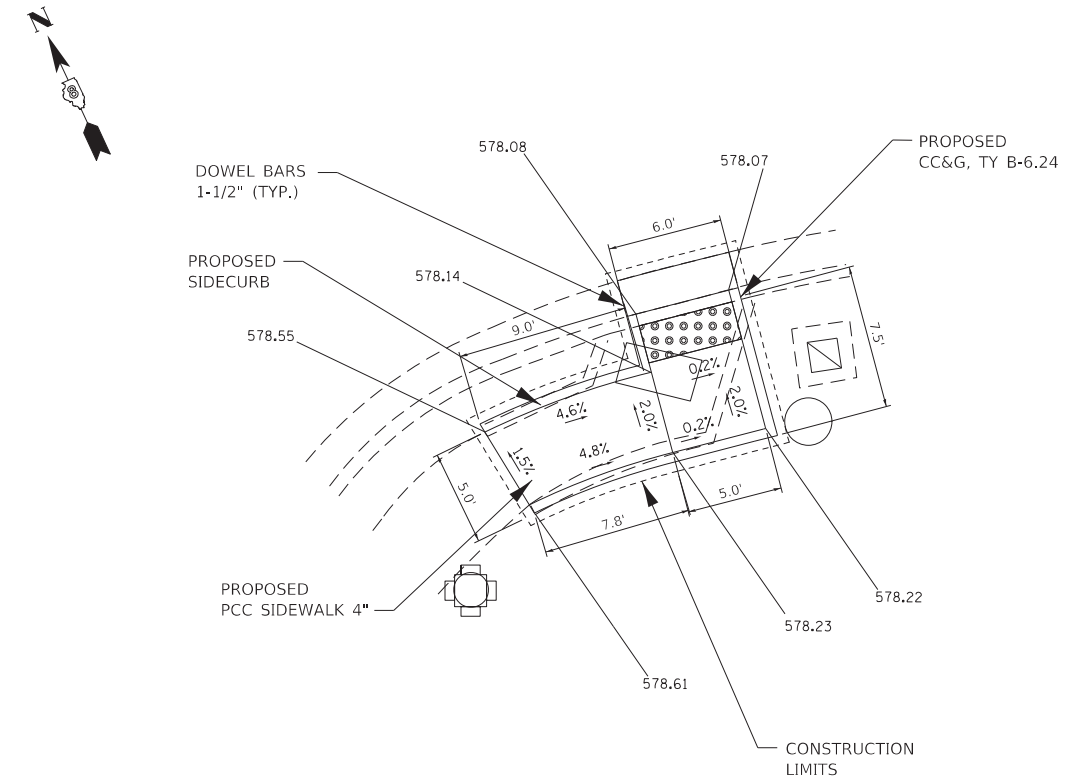
F.A.P. RTE.	SECTION	COUNTY	TOTAL SHEETS	SHEET NO.
600/592	34-1, 127-15W-1, 65-15W-1	MADISON	38	13
ILLINOIS FED. AID PROJECT			CONTRACT NO. 76J86	

IL RTE 159

JUNCTION DRIVE



SOUTHWEST QUADRANT



SOUTHEAST QUADRANT

REV. 4-9-2019

MODEL: \\MODELNAME
 FILE NAME: P:\PROJECTS\076886\CADD\DATA\CADD\HEETS\076886-sht-pln.dgn

USER NAME = Default	DESIGNED -	REVISED -
DRAWN -	REVISIONS -	
PLOT SCALE = 40,0000 ' / in.	CHECKED -	REVISED -
PLOT DATE = 2/1/2019	DATE -	REVISED -

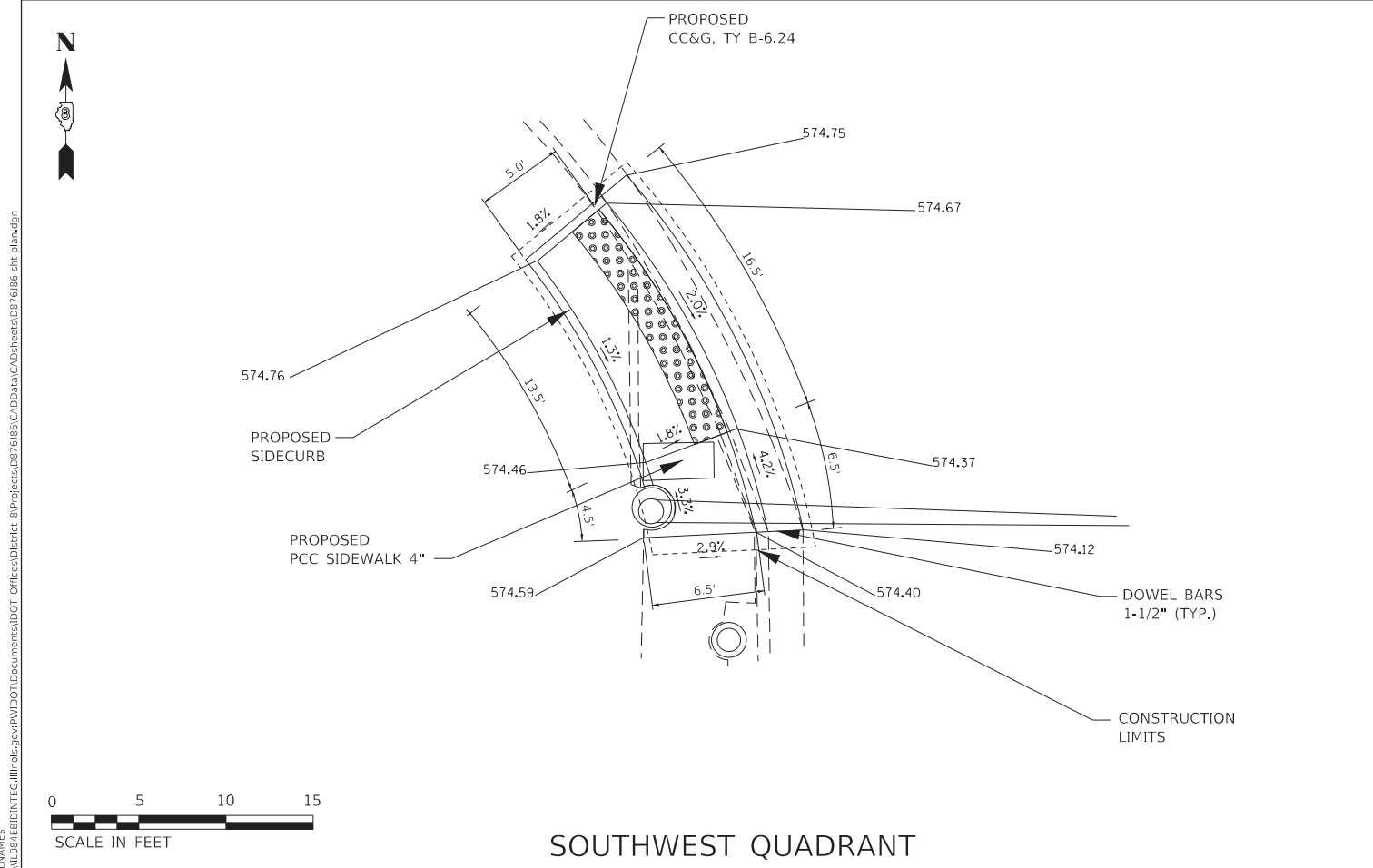
**STATE OF ILLINOIS
DEPARTMENT OF TRANSPORTATION**

PROPOSED ADA IMPROVEMENTS IL 159 AND JUNCTION DR.

SCALE: SHEET 3 OF 8 SHEETS STA. TO STA.

F.A.P. RTE.	SECTION	COUNTY	TOTAL SHEETS	SHEET NO.
600/594	34-1, 127-15W-1, 65-15W-1	MADISON	38	14
CONTRACT NO. 76J86				
ILLINOIS FED. AID PROJECT				

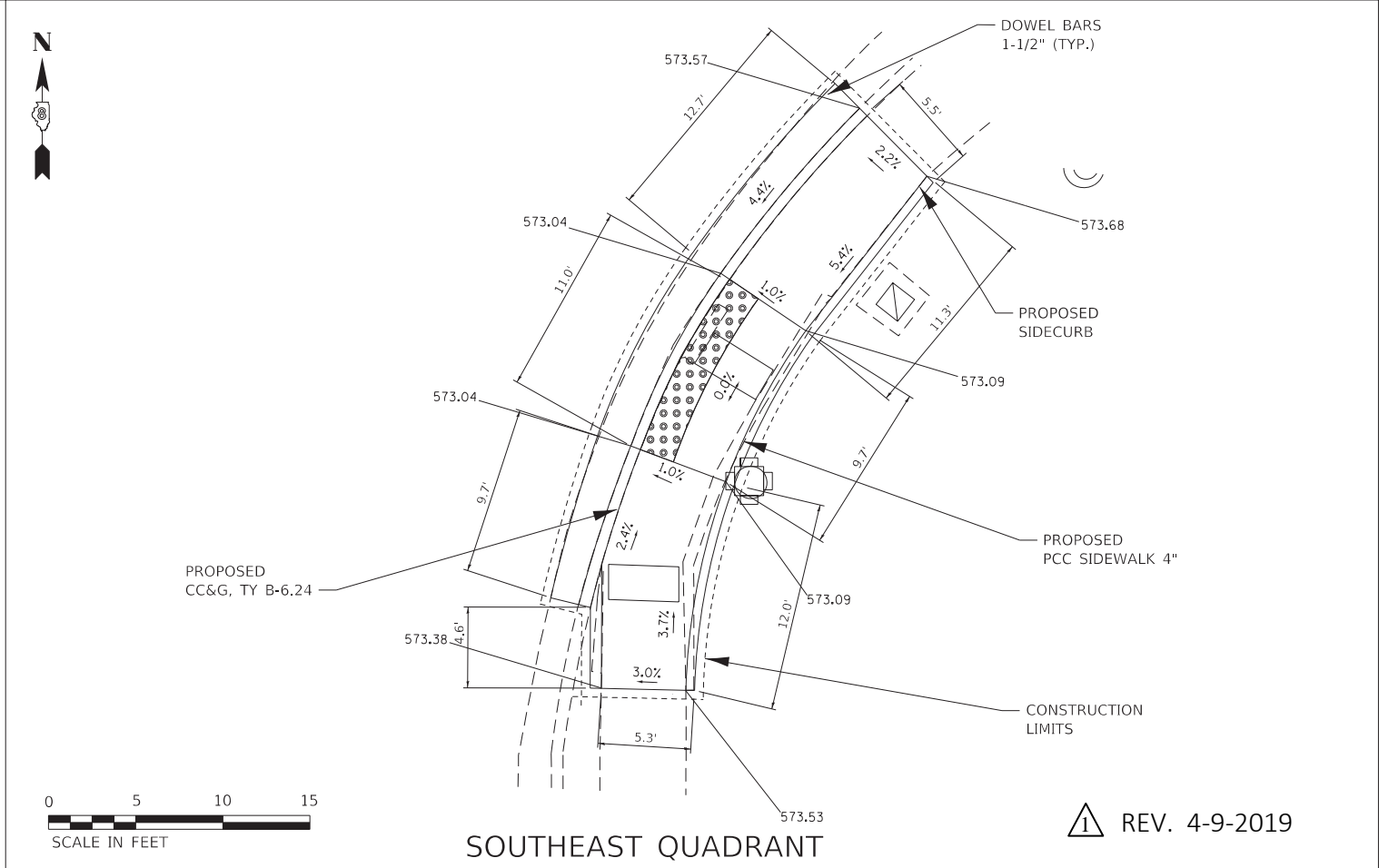
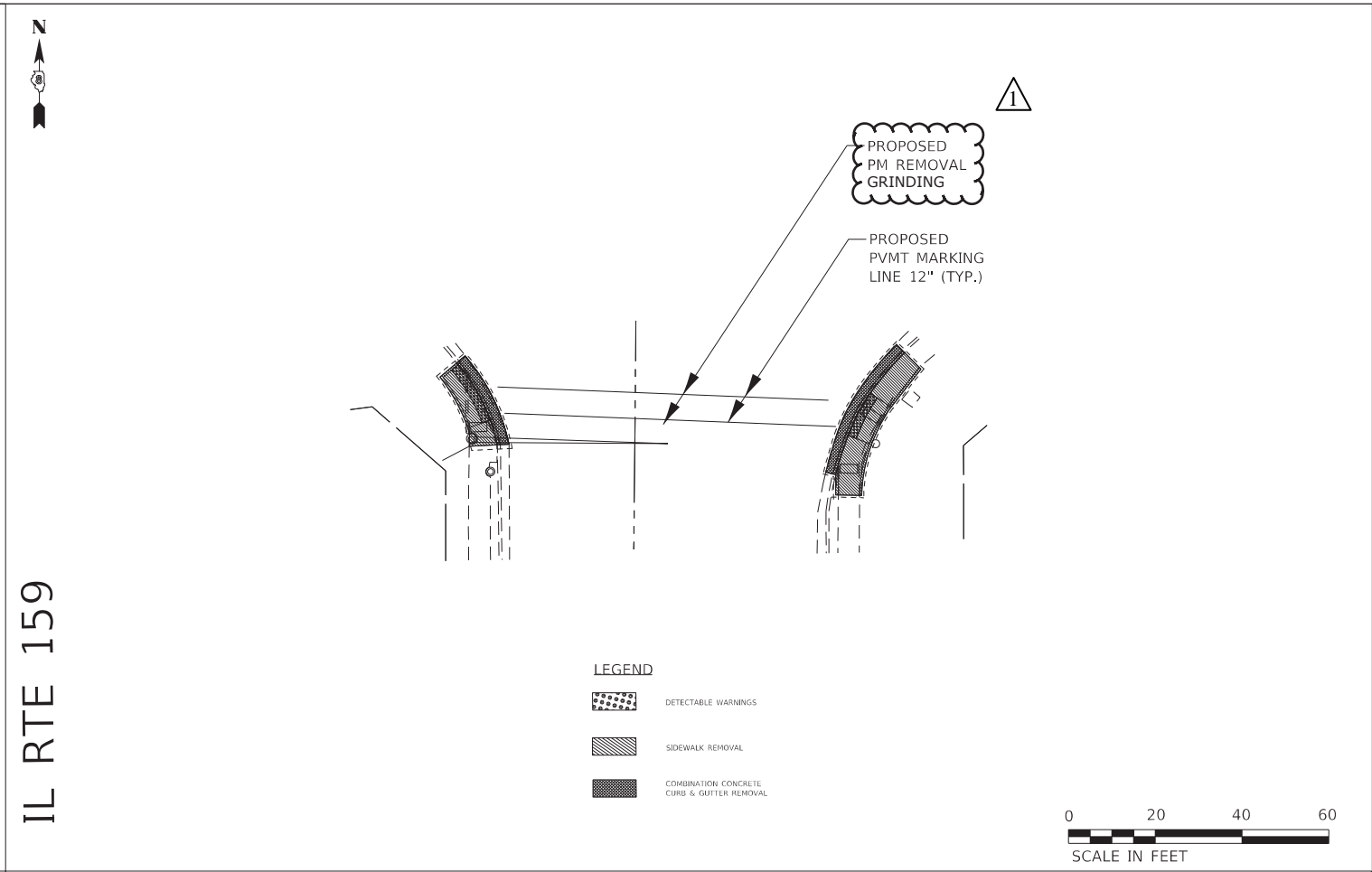
MODEL: \\MODELNAME
 FILE NAME: P:\ILLINOIS\BIDDING\TEC\Illinois.gov\FWIDOT\Documents\DOT Office\BIDirect\B\Projects\076866\CADD\Drawn\CAD\Sheet\076866-shr-plan.dgn



SOUTHWEST QUADRANT

USER NAME = Default	DESIGNED -	REVISED -
DRAWN -	REVISOR -	
PLOT SCALE = 40.0000 ' / in.	CHECKED -	REVISED -
PLOT DATE = 2/1/2019	DATE -	REVISED -

**STATE OF ILLINOIS
DEPARTMENT OF TRANSPORTATION**

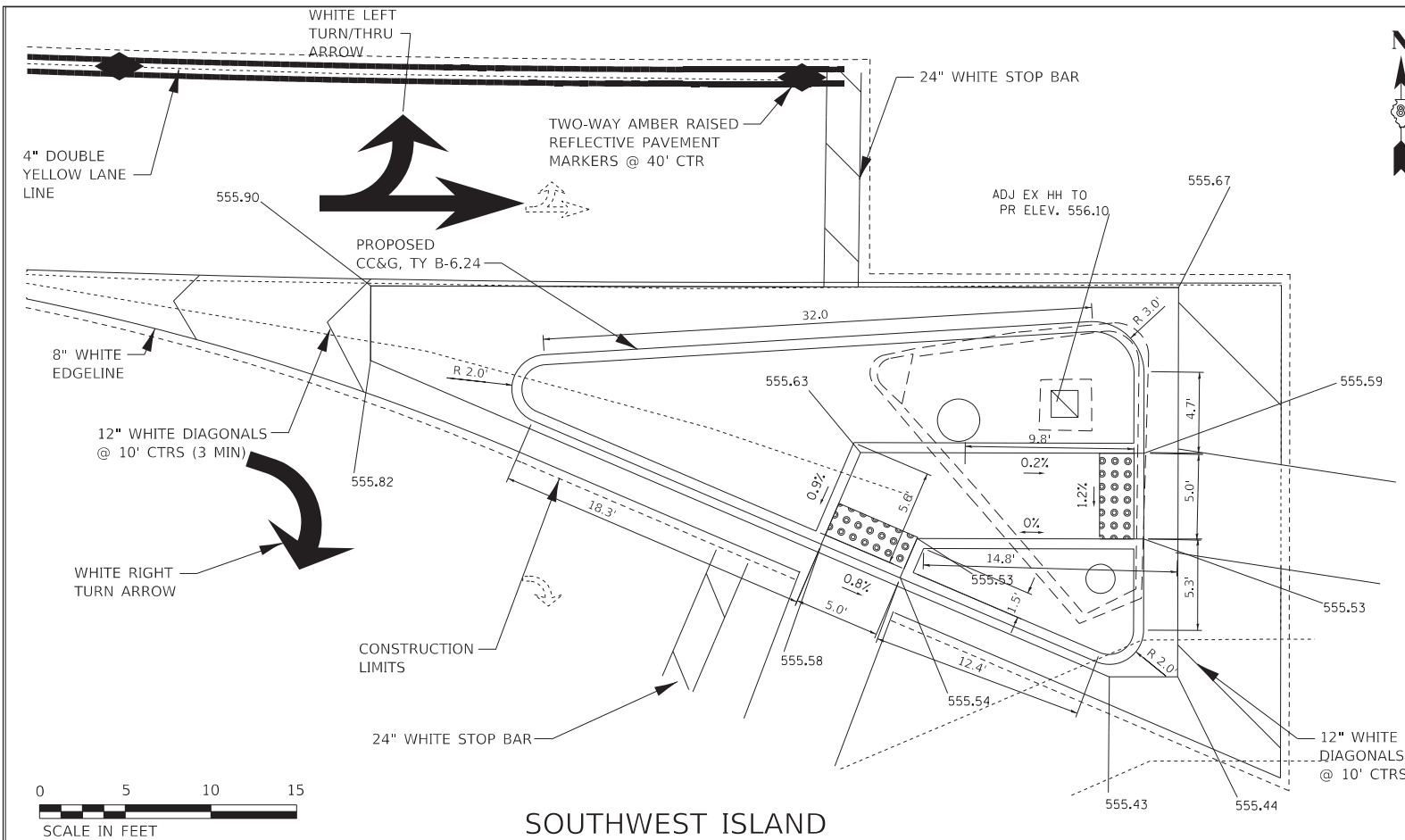


SOUTHEAST QUADRANT

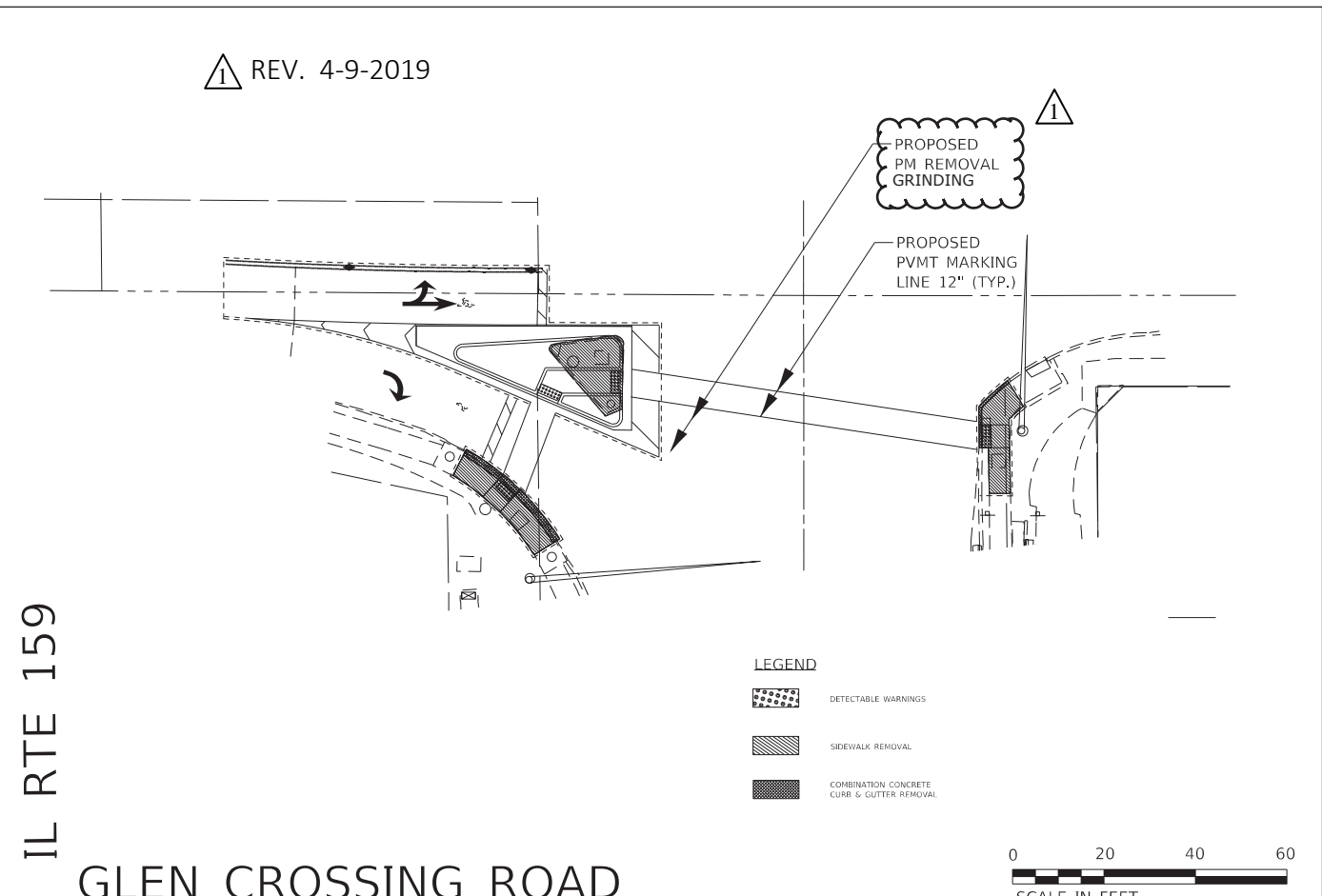
PROPOSED ADA IMPROVEMENTS IL 159 AND GLEN CARBON RD.	
SCALE:	SHEET 4 OF 8 SHEETS STA. TO STA.

F.A.P. RTE.	SECTION	COUNTY	TOTAL SHEETS	SHEET NO.
600/592	34-1, 127-15W-1, 65-15W-1	MADISON	38	15
CONTRACT NO. 76J86				
ILLINOIS FED. AID PROJECT				

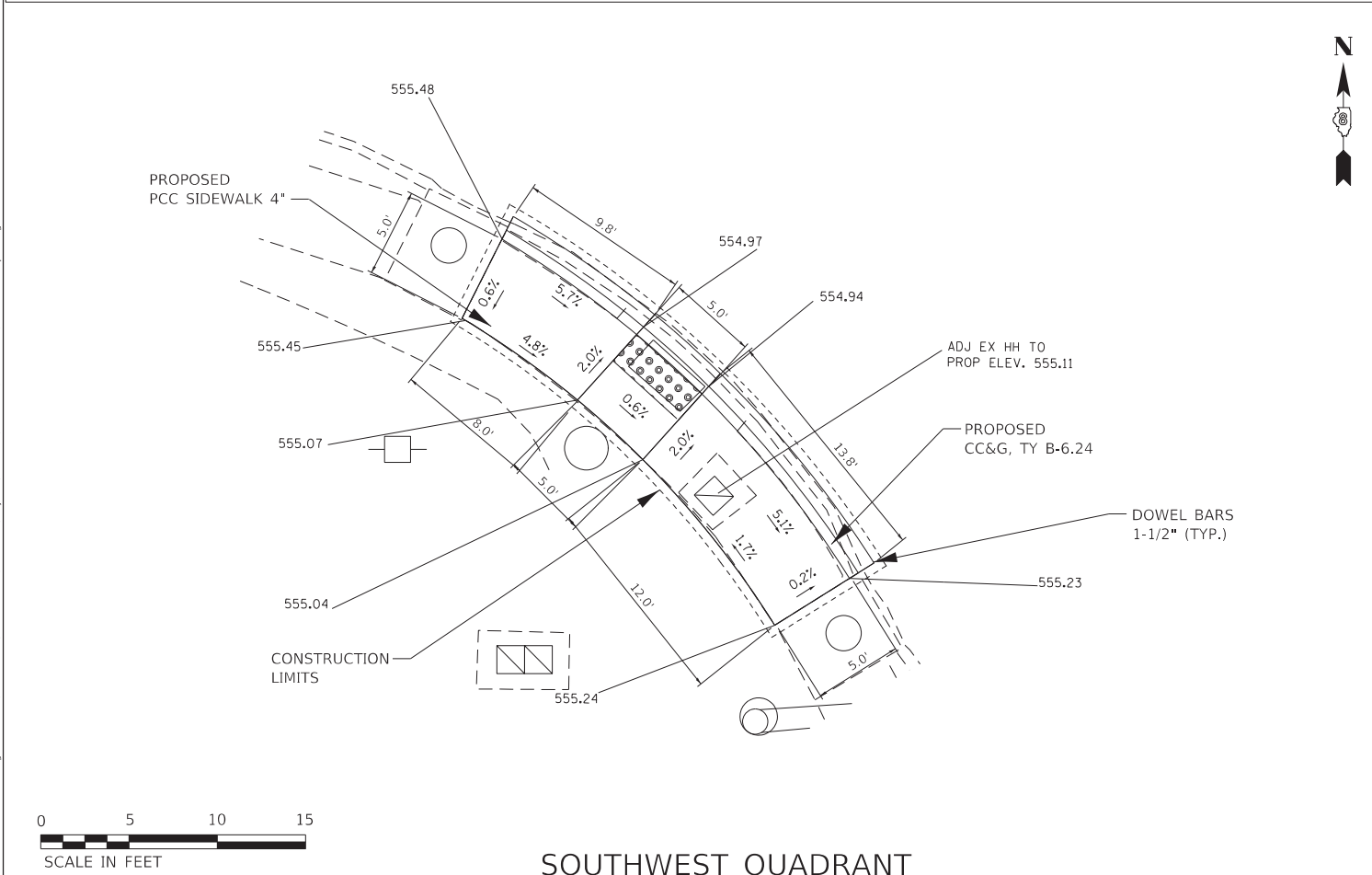
REV. 4-9-2019



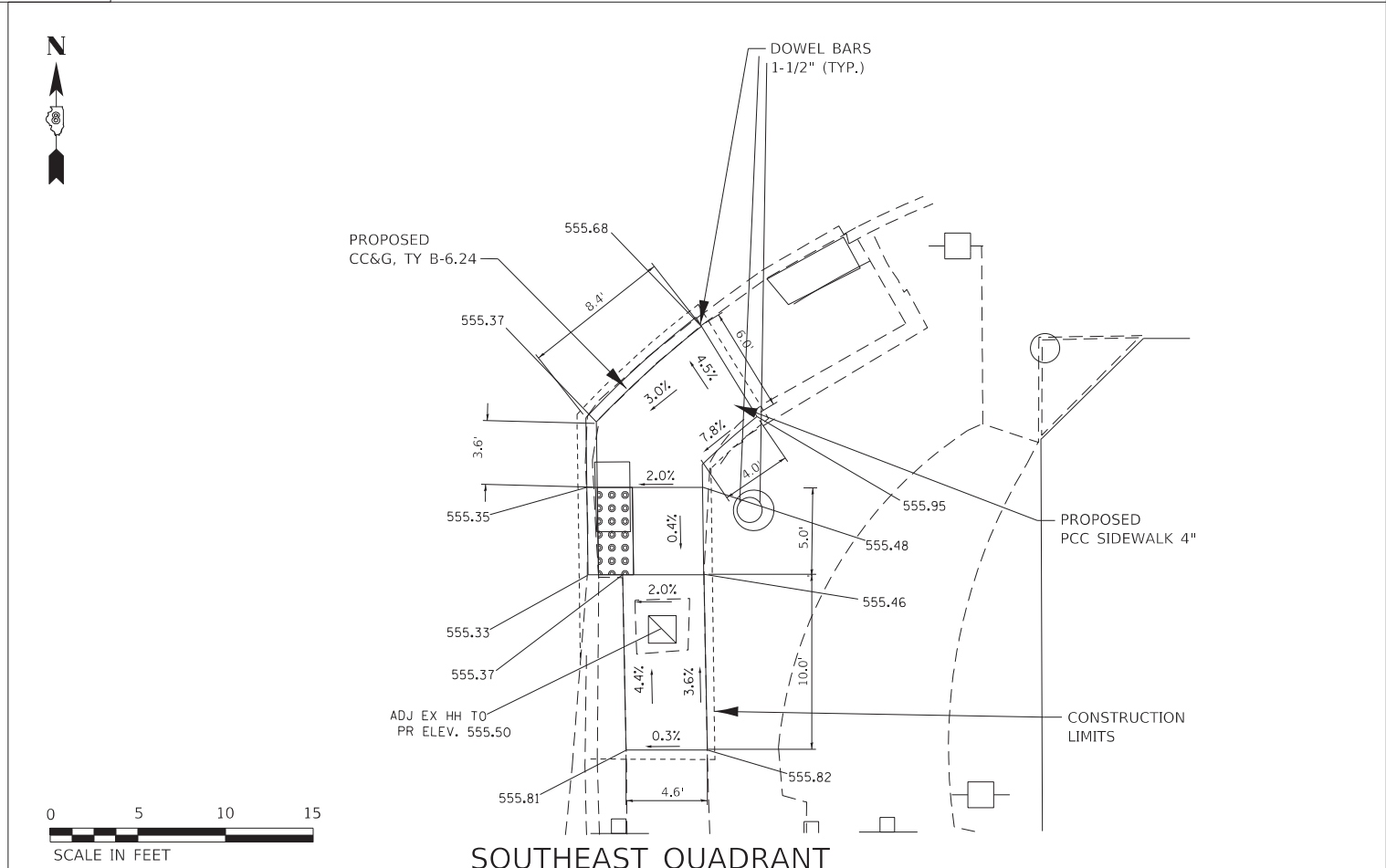
SOUTHWEST ISLAND



GLEN CROSSING ROAD



SOUTHWEST QUADRANT



SOUTHEAST QUADRANT

MODEL: \\MODELNAME
 FILE: \\FILENAME
 PROJECT: \\PROJECTNAME
 OFFICE: \\OFFICE
 DATE: \\DATE
 DRAWN BY: \\DRAWNBY
 CHECKED BY: \\CHECKEDBY
 DATE PLOTTED: \\DATEPLOT
 PLOT SCALE: \\PLOTSCALE
 PLOT DATE: \\PLOTDATE

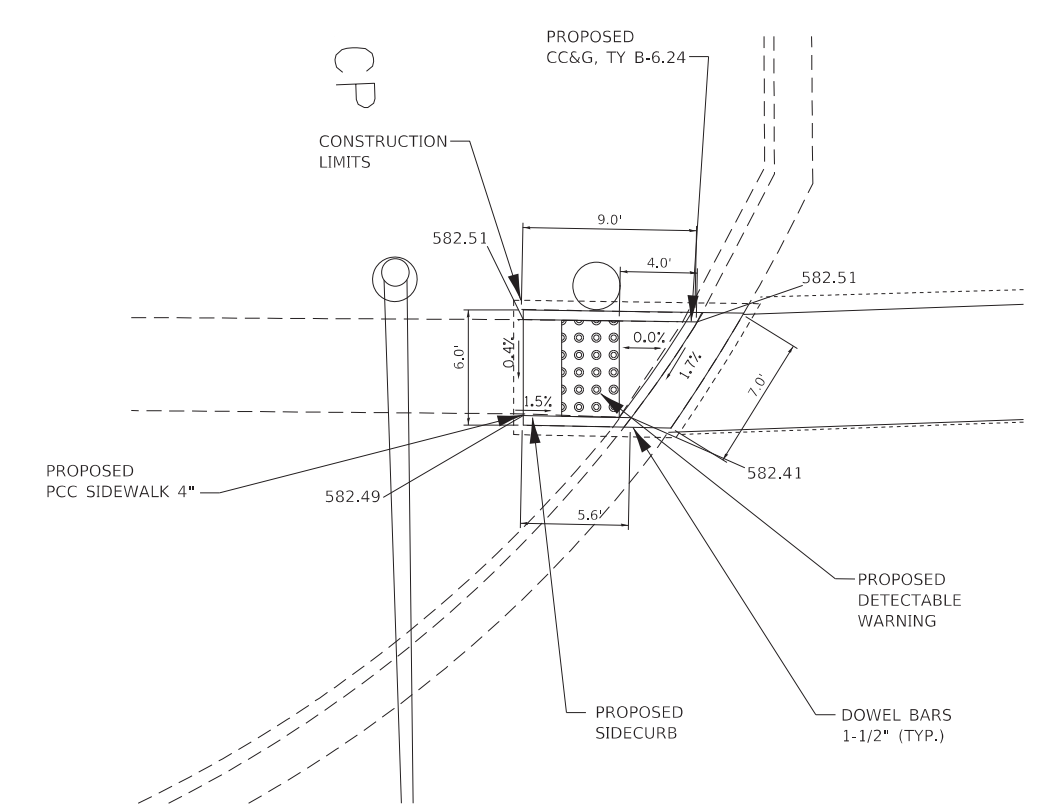
USER NAME = Default	DESIGNED -	REVISED -
DRAWN -	REVISOR -	REVISED -
PLOT SCALE = 40.0000 "/td> <td>CHECKED -</td> <td>REVISED -</td>	CHECKED -	REVISED -
PLOT DATE = 2/1/2019	DATE -	REVISED -

STATE OF ILLINOIS
DEPARTMENT OF TRANSPORTATION

PROPOSED ADA IMPROVEMENTS IL 159 AND GLEN CROSSING RD.

SCALE: SHEET 5 OF 8 SHEETS STA. TO STA.

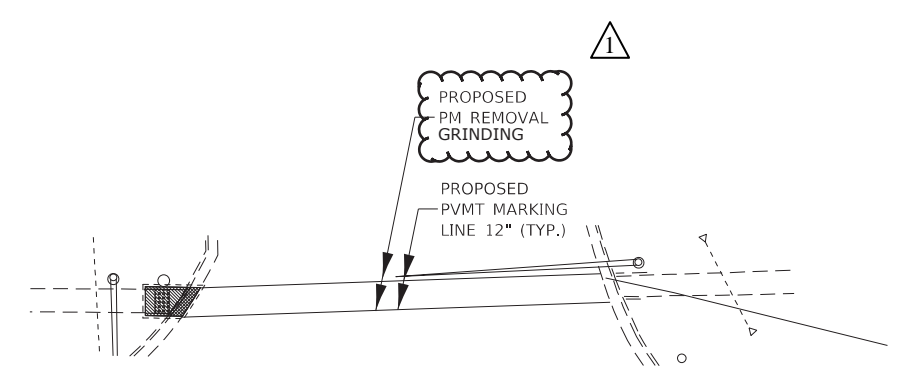
F.A.P. RTE.	SECTION	COUNTY	TOTAL SHEETS	SHEET NO.
600/592	34-1, 127-15W-1, 65-15W-1	MADISON	38	16
CONTRACT NO. 76J86				
ILLINOIS FED. AID PROJECT				



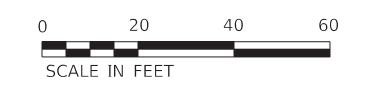
NORTHWEST QUADRANT

CENTER GROVE ROAD

IL RTE 157



- LEGEND**
- DETECTABLE WARNINGS
 - SIDEWALK REMOVAL
 - COMBINATION CONCRETE CURB & GUTTER REMOVAL



REV. 4-9-2019

MODEL: \\MODELNAME
FILE: \\NAME.Plot\\IL157@EID\\DOT\\Illinois.gov\\PWIDOT\\Documents\\DOT Office\\Dierfct 8\\Projects\\076866\\CAD\\Data\\CADsheets\\076866-8ht-pln.dgn

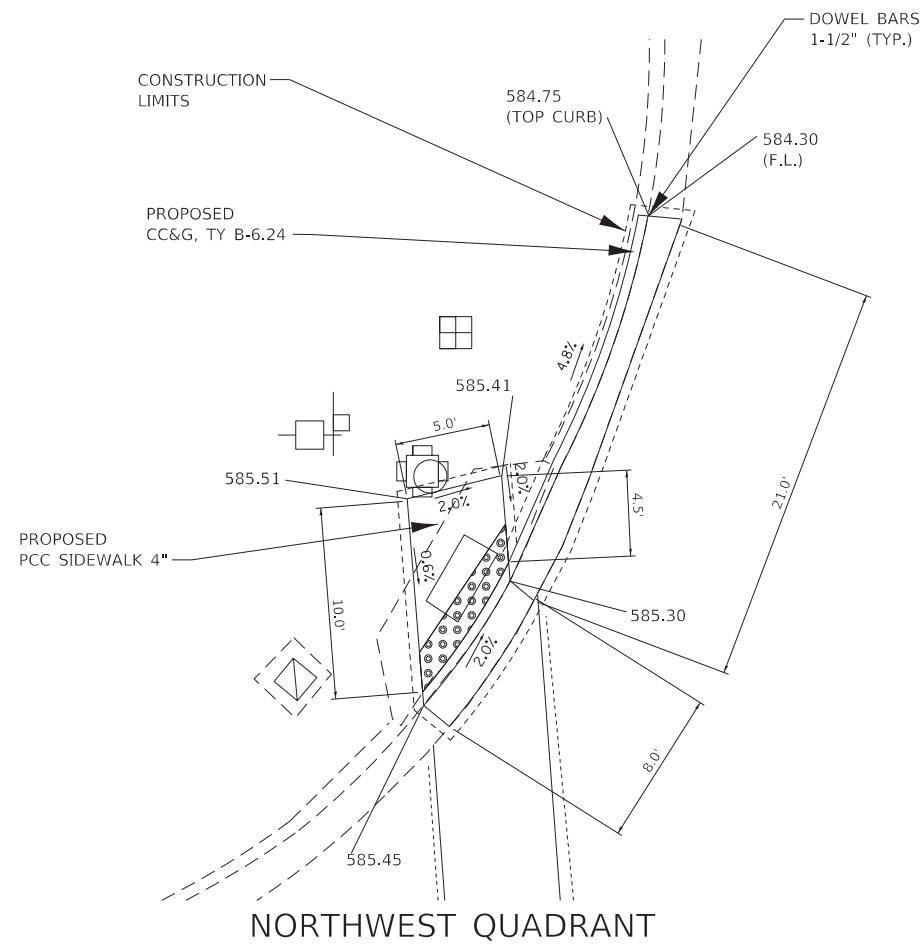
USER NAME = Default	DESIGNED -	REVISED -
	DRAWN -	REVISED -
PLOT SCALE = 40.0000 ' / in.	CHECKED -	REVISED -
PLOT DATE = 2/1/2019	DATE -	REVISED -

**STATE OF ILLINOIS
DEPARTMENT OF TRANSPORTATION**

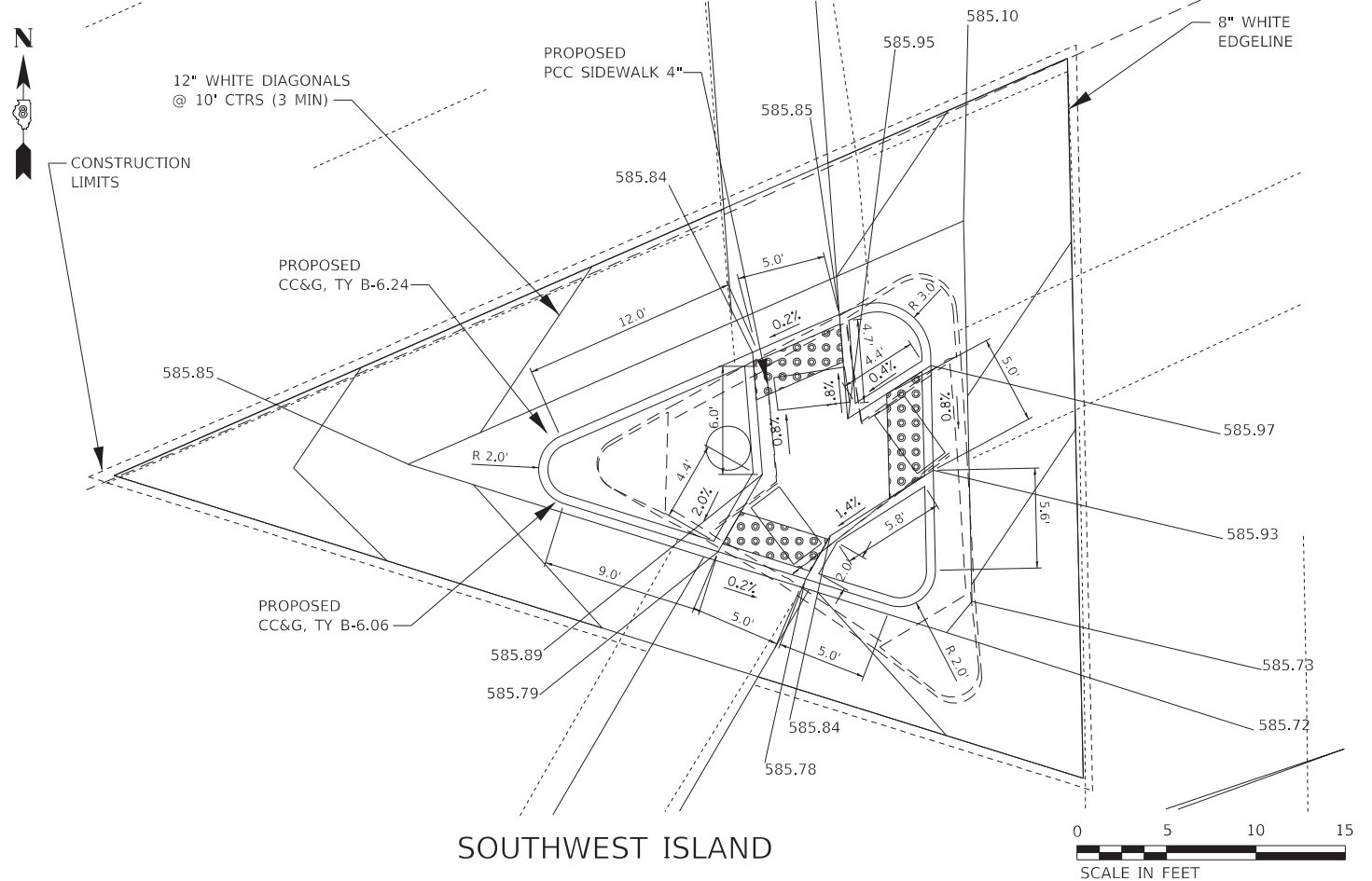
PROPOSED ADA IMPROVEMENTS IL 157 AND CENTER GROVE RD.

SCALE: SHEET 7 OF 8 SHEETS STA. TO STA.

F.A.P. RTE.	SECTION	COUNTY	TOTAL SHEETS	SHEET NO.
600/594	34-1, 127-15W-1, 65-15W-1	MADISON	38	18
CONTRACT NO. 76J86				
		ILLINOIS	FED. AID PROJECT	



NORTHWEST QUADRANT

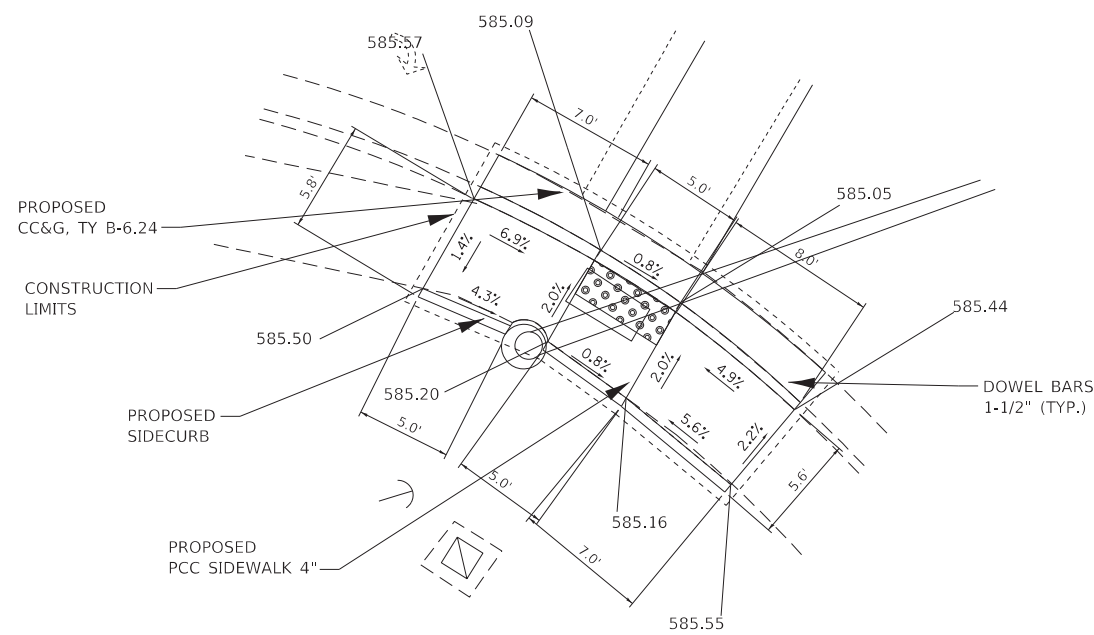


SOUTHWEST ISLAND

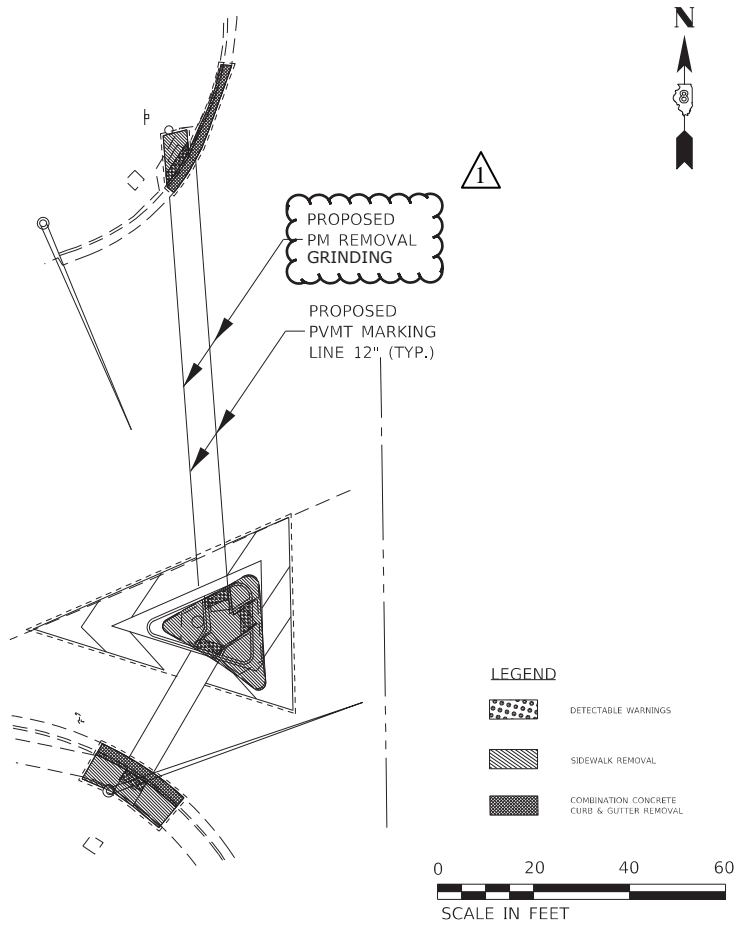


MERIDIAN ROAD

IL ROUTE 157



SOUTHWEST QUADRANT



SOUTHWEST QUADRANT



REV. 4-9-2019

MODEL: \\MODELNAME; FILE: \\NAME; PROJECT: \\PROJECT; OFFICE: \\OFFICE; DRAWING: \\DRAWING; DATE: \\DATE; USER: \\USER



USER NAME = Default	DESIGNED -	REVISED -
DRAWN -	REVISIONS -	
PLOT SCALE = 40.0000' / in.	CHECKED -	REVISED -
PLOT DATE = 2/1/2019	DATE -	REVISED -

STATE OF ILLINOIS
DEPARTMENT OF TRANSPORTATION

PROPOSED ADA IMPROVEMENTS IL 157 AND MERIDIAN RD.

SCALE: SHEET 8 OF 8 SHEETS STA. TO STA.

F.A.P. RTE.	SECTION	COUNTY	TOTAL SHEETS	SHEET NO.
600/594	34-1, 127-15W-1, 65-15W-1	MADISON	38	19
CONTRACT NO. 76J86				
ILLINOIS		FED. AID PROJECT		