

STATE OF ILLINOIS  
DEPARTMENT OF TRANSPORTATION

| F.A.P. RTE. | SECTION       | COUNTY    | TOTAL SHEETS       | SHEET NO. |
|-------------|---------------|-----------|--------------------|-----------|
| 312         | 82-3HVB-2BP-2 | ST. CLAIR | 4                  | 1         |
|             |               | ILLINOIS  | CONTRACT NO. 76M24 |           |

FOR INDEX OF SHEETS, SEE SHEET NO. 2

FUNCTIONAL CLASSIFICATION: INTERSTATE

SN 082-0143  
2017 ADT (ACTUAL): 1400  
2039 ADT (ESTIMATED): 1550  
SU = 2.9% MU = 2.1%

SN 082-0205  
2017 ADT (ACTUAL): 3300  
2039 ADT (ESTIMATED): 3700  
SU = 2.7% MU = 1.8%

# PROPOSED HIGHWAY PLANS

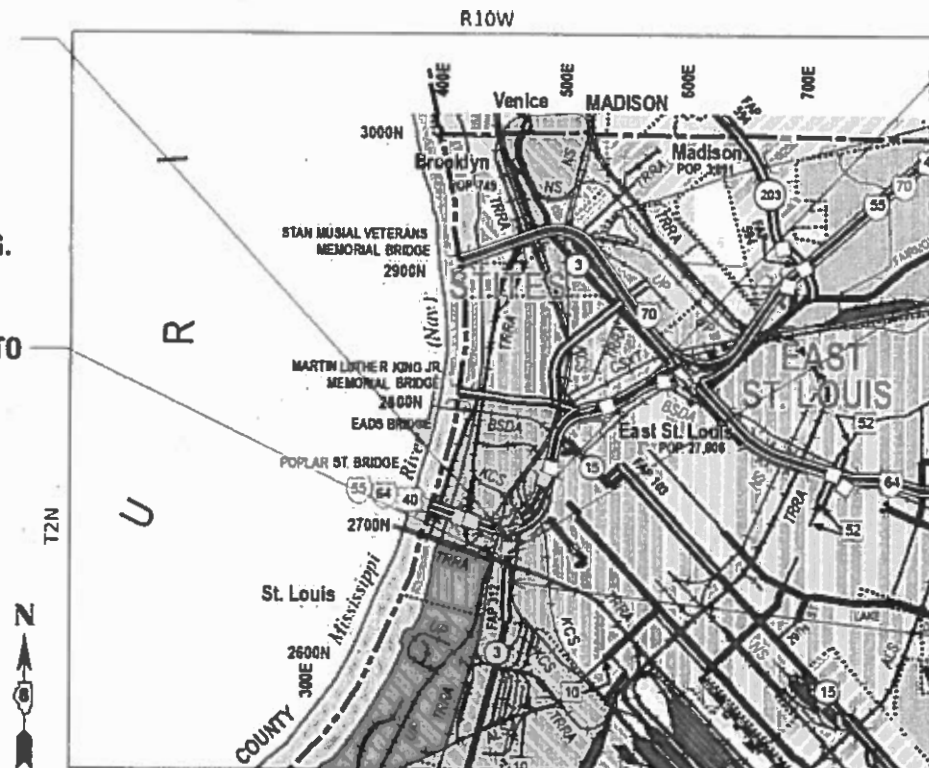
FAP ROUTE 312 (IL 003)  
SECTION 82-3HVB-2BP-2  
PROJECT NHPP-QWQH(054)  
POPLAR STREET COMPLEX BRIDGE PAINTING  
ST. CLAIR COUNTY

C-98-047-19



SN 082-0143  
TWO 3 SPAN CONTINUOUS  
UNITS WITH TWO GIRDER  
SYSTEM  
STA. 24 + 85  
618.33 FT  $\varnothing$  BRG. TO  $\varnothing$  BRG.

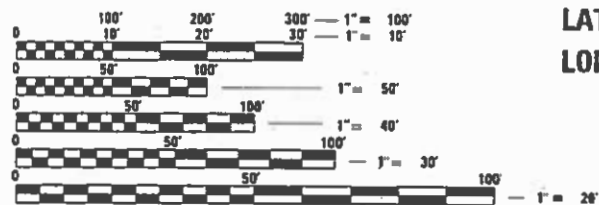
RAILROAD APPROACH TO  
MAC ARTHUR BRIDGE  
LATITUDE: 38.611480  
LONGITUDE: -90.171655



BEGIN IMPROVEMENT  
STA. 21 + 77  
LATITUDE: 38.615227  
LONGITUDE: -90.171474

SN 082-0205  
ONE SIMPLE SPAN &  
THREE - 3 SPAN CONTINUOUS  
UNITS WITH TWO GIRDER  
SYSTEM  
STA. 31 + 51  
847.30 FT  $\varnothing$  BRG. TO  $\varnothing$  BRG.

END IMPROVEMENT  
STA: 36 + 38  
LATITUDE: 38.611214  
LONGITUDE: -90.171669



FULL SIZE PLANS HAVE BEEN PREPARED USING STANDARD ENGINEERING SCALES. REDUCED SIZED PLANS WILL NOT CONFORM TO STANDARD SCALES. IN MAKING MEASUREMENTS ON REDUCED PLANS, THE ABOVE SCALES MAY BE USED.

J.U.L.I.E.  
JOINT UTILITY LOCATION INFORMATION FOR EXCAVATION  
1-800-892-0123  
OR 811

PROJECT ENGINEER: TIM PADGETT (618) 346-3325  
PROJECT MANAGER: PHILLIP FREIMUTH (618) 346-3194

CONTRACT NO. 76M24



GROSS LENGTH = 1460.97 FT. = 0.277 MILES  
NET LENGTH = 1460.97 FT. = 0.277 MILES

STATE OF ILLINOIS  
DEPARTMENT OF TRANSPORTATION

SUBMITTED Jan 17 20 19  
Kaith Roberts  
REGIONAL ENGINEER

March 22 20 19  
[Signature]  
ENGINEER OF DESIGN AND ENVIRONMENT

March 22 20 19  
[Signature]  
DIRECTOR OF HIGHWAYS PROJECT IMPLEMENTATION

PRINTED BY THE AUTHORITY  
OF THE STATE OF ILLINOIS



URBAN  
80% FED  
20% STATE

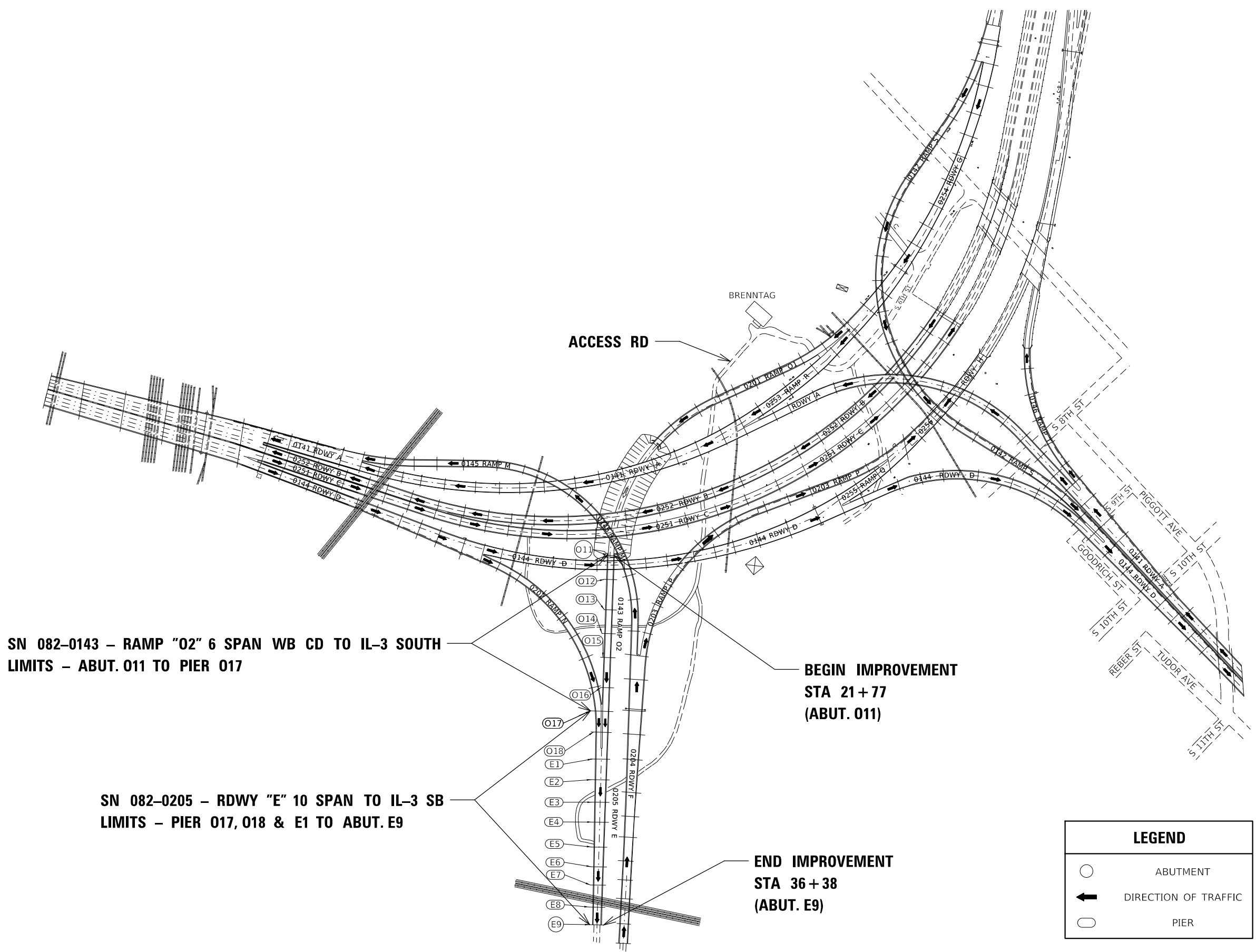
CONSTRUCTION CODE

| CODE NO. | ITEM                                                          | UNIT  | TOTAL QUANTITY | CONSTRUCTION CODE |  |
|----------|---------------------------------------------------------------|-------|----------------|-------------------|--|
|          |                                                               |       |                | BRIDGE 0047       |  |
| 67100100 | MOBILIZATION                                                  | L SUM | 1              | 1                 |  |
| Z0007101 | CONTAINMENT AND DISPOSAL OF LEAD PAINT CLEANING RESIDUESNO. 1 | L SUM | 1              | 1                 |  |
| Z0007102 | CONTAINMENT AND DISPOSAL OF LEAD PAINT CLEANING RESIDUESNO. 2 | L SUM | 1              | 1                 |  |
| Z0010501 | CLEANING AND PAINTING STEEL BRIDGE NO. 1                      | L SUM | 1              | 1                 |  |
| Z0010502 | CLEANING AND PAINTING STEEL BRIDGE NO. 2                      | L SUM | 1              | 1                 |  |
| Z0048665 | RAILROAD PROTECTIVE LIABILITY INSURANCE                       | L SUM | 1              | 1                 |  |

MODEL: Default  
FILE NAME: P:\11108\EBID\NTEG Illinois.gov\PWIDOT\Documents\DOT Offices\District 8\Projects\0876M24\CADD\baCAD\sheet\0876M24-sh-500.dgn

REV. - MS

|                              |            |           |                                                           |                                         |  |  |                    |               |                           |              |           |
|------------------------------|------------|-----------|-----------------------------------------------------------|-----------------------------------------|--|--|--------------------|---------------|---------------------------|--------------|-----------|
| USER NAME = heppjd           | DESIGNED - | REVISED - | <b>STATE OF ILLINOIS<br/>DEPARTMENT OF TRANSPORTATION</b> | <b>SUMMARY OF QUANTITIES</b>            |  |  | F.A.P. RTE.        | SECTION       | COUNTY                    | TOTAL SHEETS | SHEET NO. |
| PLOT SCALE = 100.0000' / in. | DRAWN -    | REVISED - |                                                           |                                         |  |  | 312                | 82-3HVB-2BP-2 | ST. CLAIR                 | 4            | 3         |
| PLOT DATE = 1/18/2019        | CHECKED -  | REVISED - |                                                           | SCALE: SHEET 1 OF 1 SHEETS STA. TO STA. |  |  | CONTRACT NO. 76M24 |               | ILLINOIS FED. AID PROJECT |              |           |
|                              | DATE -     | REVISED - |                                                           |                                         |  |  |                    |               |                           |              |           |



**SN 082-0143 – RAMP "O2" 6 SPAN WB CD TO IL-3 SOUTH LIMITS – ABUT. 011 TO PIER 017**

**SN 082-0205 – RDWY "E" 10 SPAN TO IL-3 SB LIMITS – PIER 017, 018 & E1 TO ABUT. E9**

**BEGIN IMPROVEMENT  
STA 21+77  
(ABUT. 011)**

**END IMPROVEMENT  
STA 36+38  
(ABUT. E9)**

| LEGEND |                      |
|--------|----------------------|
|        | ABUTMENT             |
|        | DIRECTION OF TRAFFIC |
|        | PIER                 |

MODEL: Default  
 FILE: Name: C:\p\1108\B&E\ID\NTEC\Illinois\gov\PIWDOT\Documents\110DOT\_Offices\Director\B\Projects\0876M24\CADD\BstaCAD\chere\0876M24-shc-detaile.dgn

|                              |            |           |
|------------------------------|------------|-----------|
| USER NAME = heppjd           | DESIGNED - | REVISED - |
|                              | DRAWN -    | REVISED - |
| PLOT SCALE = 100,0000' / in. | CHECKED -  | REVISED - |
| PLOT DATE = 1/18/2019        | DATE -     | REVISED - |

**STATE OF ILLINOIS  
DEPARTMENT OF TRANSPORTATION**

| LOCATION MAP |         |             |              |
|--------------|---------|-------------|--------------|
| SCALE: NTS   | SHEET 1 | OF 1 SHEETS | STA. TO STA. |

| F.A.P. RTE. | SECTION       | COUNTY    | TOTAL SHEETS     | SHEET NO.          |
|-------------|---------------|-----------|------------------|--------------------|
| 312         | 82-3HVB-28P-2 | ST. CLAIR | 4                | 4                  |
|             |               |           |                  | CONTRACT NO. 76M24 |
|             |               | ILLINOIS  | FED. AID PROJECT |                    |