

STATE OF ILLINOIS  
DEPARTMENT OF TRANSPORTATION

FAU RTE	SECTION	COUNTY	TOTAL SHEETS
3545	2018-142-BR-1	DUPAGE	15
CONTRACT NO. 62H80			

D-91-115-19

FOR INDEX OF SHEETS, SEE SHEET NO. 2

**IMPROVEMENT LOCATIONS**  
 1) VILLAGES OF LOMBARD AND DOWNERS GROVE  
 2) CITY OF OAK BROOK TER.

**TRAFFIC DATA**

1) SN: 022-0154  
 HIGHLAND AVE ADT 12,700 (2016)  
 IL 56 ( BUTTERFIELD), ADT 43,600 (2017)

2) SN: 022-0117  
 IL 83 (KINGERY HWY), ADT 59,300 (2017)  
 IL 56 ( BUTTERFIELD), ADT 24,900 (2017)

**POSTED SPEED LIMIT**

1) SN: 022-0154  
 HIGHLAND AVE, 45 MPH  
 IL 56 ( BUTTERFIELD), 45 MPH

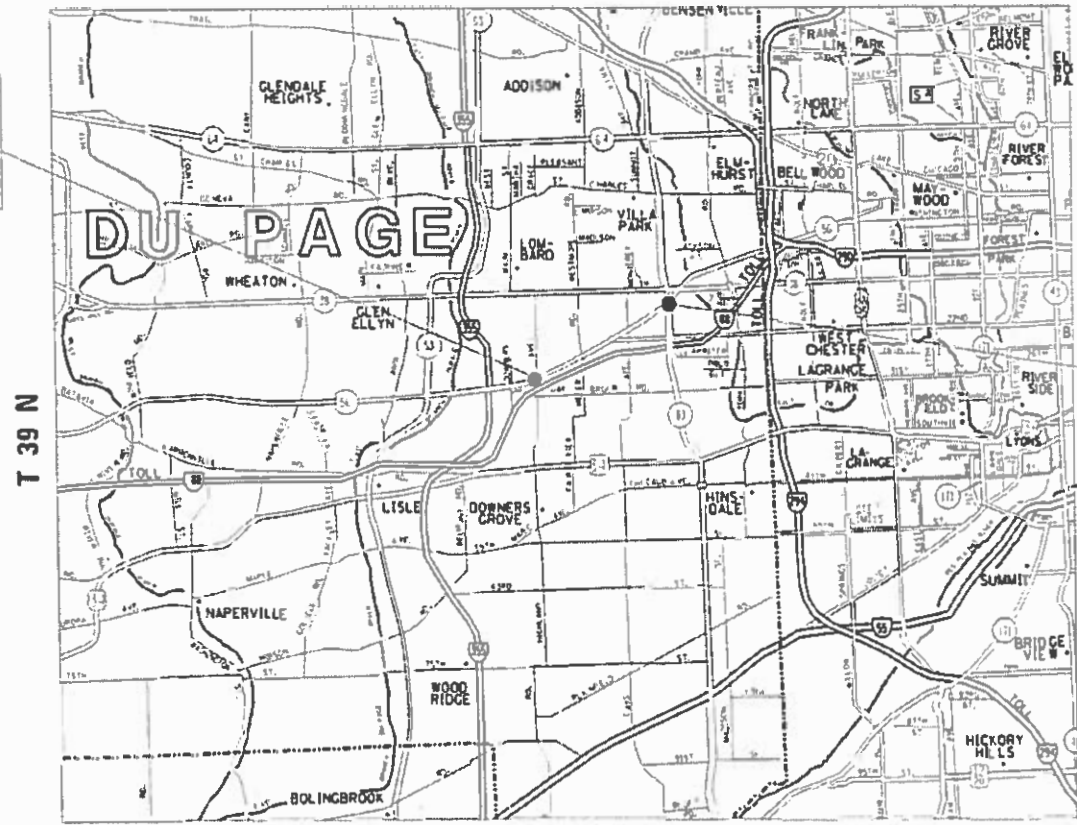
2) SN: 022-0117  
 IL 83 (KINGERY HWY), 50 MPH  
 IL 56 ( BUTTERFIELD), 45 MPH

# PROPOSED HIGHWAY PLANS

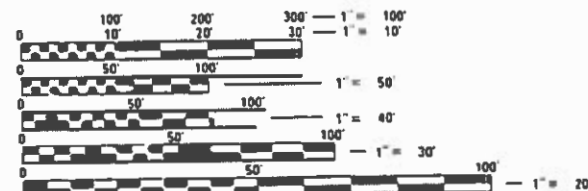
FAU ROUTE 3545: IL 56 (BUTTERFIELD RD)  
 1) AT HIGHLAND AVE 2) AT IL 83 (KINGERY HWY)  
 SECTION: 2018-142-BR-1  
 PROJECT NHPP-4M9Q (463)  
 BRIDGE REPAIR (SUBSTRUCTURE REPAIRS)  
 DUPAGE COUNTY  
 C-91-320-19



1) LOCATION OF IMPROVEMENT  
 IL 56 (BUTTERFIELD RD AT  
 HIGHLAND AVE.  
 SN 022-0154



2) LOCATION OF IMPROVEMENT  
 IL 56 (BUTTERFIELD RD AT  
 IL 83 (KINGERY HWY)  
 SN 022-0117 & SN 022-0118



FULL SIZE PLANS HAVE BEEN PREPARED USING STANDARD ENGINEERING SCALES. REDUCED SIZED PLANS WILL NOT CONFORM TO STANDARD SCALES. IN MAKING MEASUREMENTS ON REDUCED PLANS, THE ABOVE SCALES MAY BE USED.

J.U.I.E.  
 JOINT UTILITY LOCATION INFORMATION FOR EXCAVATORS  
 1-800-892-0123  
 OR 811

PROJECT ENGINEER: ALAIN MIDY (847) 221-3056  
 PROJECT MANAGER: FAWAD AQUEEL (847) 705-4247

GROSS LENGTH = 306.417 FT. = 0.058 MILE  
 NET LENGTH = 306.417 FT. = 0.058 MILE

STATE OF ILLINOIS  
 DEPARTMENT OF TRANSPORTATION

SUBMITTED: January 28, 2019

*Anthony J. [Signature]* REGIONAL ENGINEER  
March 22, 2019

*[Signature]* ENGINEER OF DESIGN AND ENVIRONMENT  
March 22, 2019

*[Signature]* DIRECTOR OF HIGHWAYS PROJECT IMPLEMENTATION

PRINTED BY THE AUTHORITY  
 OF THE STATE OF ILLINOIS

CONTRACT NO. 62H80

INDEX OF SHEETS

SHEET NO.	DESCRIPTION
1	COVER SHEET
2	INDEX OF SHEETS, STANDARDS, AND GENERAL NOTES
3	SUMMARY OF QUANTITIES
4	TYPICAL SECTIONS
5	TRAFFIC CONTROL SHEETS
6-8	SUBSTRUCTURE REPAIR SHEETS (SN 022-0154)
9-11	SUBSTRUCTURE REPAIR SHEETS (SN 022-0117 & SN 022-0118)
12	TRAFFIC CONTROL AND PROTECTION FOR SIDE ROADS INTERSECTIONS, AND DRIVEWAYS (TC-10)
13	TRAFFIC CONTROL AND PROTECTION AT TURN BAYS (TO REMAIN) OPEN TO TRAFFIC (TC-14)
14	SHOULDER CLOSURES AND PARTIAL RAMP CLOSURES (TC-17)
15	ARTERIAL ROAD INFORMATION SIGN (TC-22)

STANDARD NO.	DESCRIPTION
643001-02	SAND MODULE IMPACT ATTENUATORS
701011-04	OFF-RD MOVING OPERATIONS, 2L, 2W, DAY ONLY
701101-05	OFF-RD OPERATIONS, MULTILANE, 15' (4.5M) TO 24" (600MM) FROM PAVEMENT EDGE
701421-08	LANE CLOSURE, MULTILANE, DAY OPERATIONS ONLY, FOR SPEED EQUAL OR GREATER TO 45 TO 55
701426-09	LANE CLOSURE, MULTILANE, INTERMITTENT OR MOVING OPER., FOR SPEEDS GREATER OR EQUAL TO 45 MPH
701601-09	URBAN LANE CLOSURE, MULTILANE, 1W OR 2W WITH NONTRAVERSABLE MEDIAN
701901-08	TRAFFIC CONTROL DEVICES
704001-08	TEMPORARY CONCRETE BARRIER
782006	GUARDRAIL AND BARRIER WALL REFLECTOR MOUNTING DETAILS

GENERAL NOTES

BEFORE STARTING ANY EXCAVATION, THE CONTRACTOR SHALL CALL "JULIE" AT 800-892-0123 OR 811 FOR FIELD LOCATIONS OF BURIED ELECTRIC, TELEPHONE AND GAS FACILITIES. (48 HOUR NOTIFICATION IS REQUIRED).

THE CONTRACTOR SHALL COORDINATE CONSTRUCTION ACTIVITIES WITH UTILITY COMPANIES AND THE VILLAGE OF LOMBARD, DOWNERS GROVE AND CITY OF OAK BROOK TERRACE.

THE CONTRACTOR WILL NOT BE ALLOWED TO SET UP A YARD OR FIELD OFFICE ON STATE PROPERTY WITHOUT WRITTEN PERMISSION FROM THE DEPARTMENT.

IT SHALL BE THE CONTRACTOR'S RESPONSIBILITY TO VERIFY ALL DIMENSIONS AND CONDITIONS EXISTING IN THE FIELD PRIOR TO CONSTRUCTION AND ORDERING OF MATERIALS.

THE CONTRACTOR SHALL BE REQUIRED TO PROVIDE ACCESS TO ABUTTING PROPERTY AT ALL TIMES DURING THE CONSTRUCTION OF THIS PROJECT.

THE CONTRACTOR SHALL CONTACT THE DISTRICT ONE TRAFFIC CONTROL SUPERVISOR AT KALPANA.KANNAN-HOSADURGA@ILLINOIS.GOV (72 HOURS IN ADVANCE OF BEGINNING WORK).

THESE PLANS HAVE BEEN PREPARED FROM NOTES RECEIVED FROM THE BUREAU OF MAINTENANCE BRIDGE INSPECTORS.

DO NOT SCALE PLANS FOR CONSTRUCTION DIMENSIONS.

PLAN DIMENSIONS AND DETAILS RELATIVE TO EXISTING PLANS ARE SUBJECT TO NOMINAL CONSTRUCTION VARIATIONS. THE CONTRACTOR SHALL FIELD VERIFY EXISTING DIMENSIONS AND DETAILS AFFECTING NEW CONSTRUCTION AND MAKE NECESSARY APPROVED ADJUSTMENTS PRIOR TO CONSTRUCTION OR ORDERING OF MATERIALS. SUCH VARIATIONS SHALL NOT BE CAUSE FOR ADDITIONAL COMPENSATION FOR A CHANGE IN SCOPE OF THE WORK, HOWEVER THE CONTRACTOR WILL BE PAID FOR THE QUANTITY ACTUALLY FURNISHED BASED AT THE UNIT PRICE BID FOR THE WORK.

FILE NAME =	USER NAME = midyja	DESIGNED -	REVISED -	<b>STATE OF ILLINOIS DEPARTMENT OF TRANSPORTATION</b>	<b>INDEX OF SHEETS, STANDARDS, &amp; GENERAL NOTES</b>	F.A.U. RTÉ.	SECTION	COUNTY	TOTAL SHEETS	SHEET NO.	
pw:\IL\084EBIDINTEG\illinois.gov\PWIDOT\Documents\DOT Offices\District 1\Projects\DI1151\DRAMA\Design\DI11519-sht-gennote.dgn		CHECKED -	REVISED -			3545	2018-142-BR-1	DUPAGE	15	2	
Default	PLOT SCALE = 100.0000' / 1in.	DATE -	REVISED -			SCALE: SHEET OF SHEETS STA. TO STA.		CONTRACT NO. 62H80			
	PLOT DATE = 2/5/2019					ILLINOIS FED. AID PROJECT					

SUMMARY OF QUANTITIES			URBAN TOTAL QUANTITIES	CONSTRUCTION TYPE CODE				
CODE NO	ITEM	UNIT		NHPP 80% FED 20% STATE 0013				
67000400	ENGINEER'S FIELD OFFICE, TYPE A	CAL MO	6	6				
67100100	MOBILIZATION	L SUM	1	1				
70100310	TRAFFIC CONTROL AND PROTECTION, STANDARD 701421	L SUM	1	1				
70102630	TRAFFIC CONTROL AND PROTECTION, STANDARD 701601	L SUM	1	1				
70300904	PAVEMENT MARKING TAPE, TYPE IV 4"	FOOT	150	150				
70400100	TEMPORARY CONCRETE BARRIER	FOOT	37.5	37.5				
70400200	RELOCATE TEMPORARY CONCRETE BARRIER	FOOT	37.5	37.5				
70600260	IMPACT ATTENUATORS, TEMPORARY (NON- REDIRECTIVE NARROW), TEST LEVEL 3	EACH	1	1				
70600352	IMPACT ATTENUATORS, RELOCATE (NON- REDIRECTIVE NARROW), TEST LEVEL 3	EACH	1	1				
78200011	BARRIER WALL REFLECTORS, TYPE C	EACH	3	3				
X7010216	TRAFFIC CONTROL AND PROTECTION, (SPECIAL)	L SUM	1	1				
X7030005	TEMPORARY PAVEMENT MARKING REMOVAL	SO FT	50	50				
Z0012754	STRUCTURAL REPAIR OF CONCRETE (DEPTH EQUAL TO OR LESS THAN 5 INCHES)	SO FT	4779	4779				

SUMMARY OF QUANTITIES			URBAN TOTAL QUANTITIES	CONSTRUCTION TYPE CODE				
CODE NO	ITEM	UNIT		NHPP 80% FED 20% STATE 0013				
Z0012755	STRUCTURAL REPAIR OF CONCRETE (DEPTH GREATER THAN 5 INCHES)	SO FT	187	187				
Z0030850	TEMPORARY INFORMATION SIGNING	SO FT	102.8	102.8				
Z0073200	TEMPORARY SHORING AND CRIBBING	EACH	5	5				

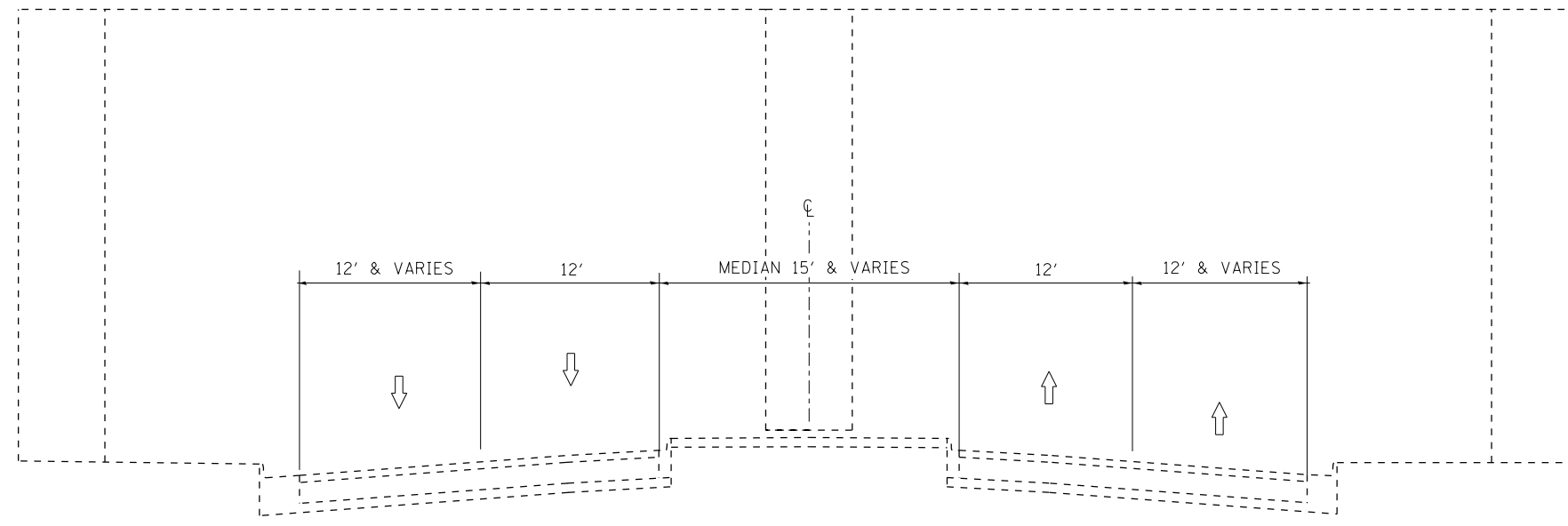
FILE NAME =	USER NAME = allababdz	DESIGNED -	REVISED -
pw:\NLOB\EBID\INTEG\Illinois.gov\FWIDOT\Documents\DOT	Offices\District N\Projects\DI11519\CAD\Drawn\Design\DI11519-1	DRAWN -	REVISED -
	PLOT SCALE = 100,0000' / 1in	CHECKED -	REVISED -
	PLOT DATE = 2/4/2019	DATE -	REVISED -

**STATE OF ILLINOIS  
DEPARTMENT OF TRANSPORTATION**

<b>SUMMARY OF QUANTITIES</b>			
SCALE:	SHEET NO.	OF SHEETS	STA. TO STA.

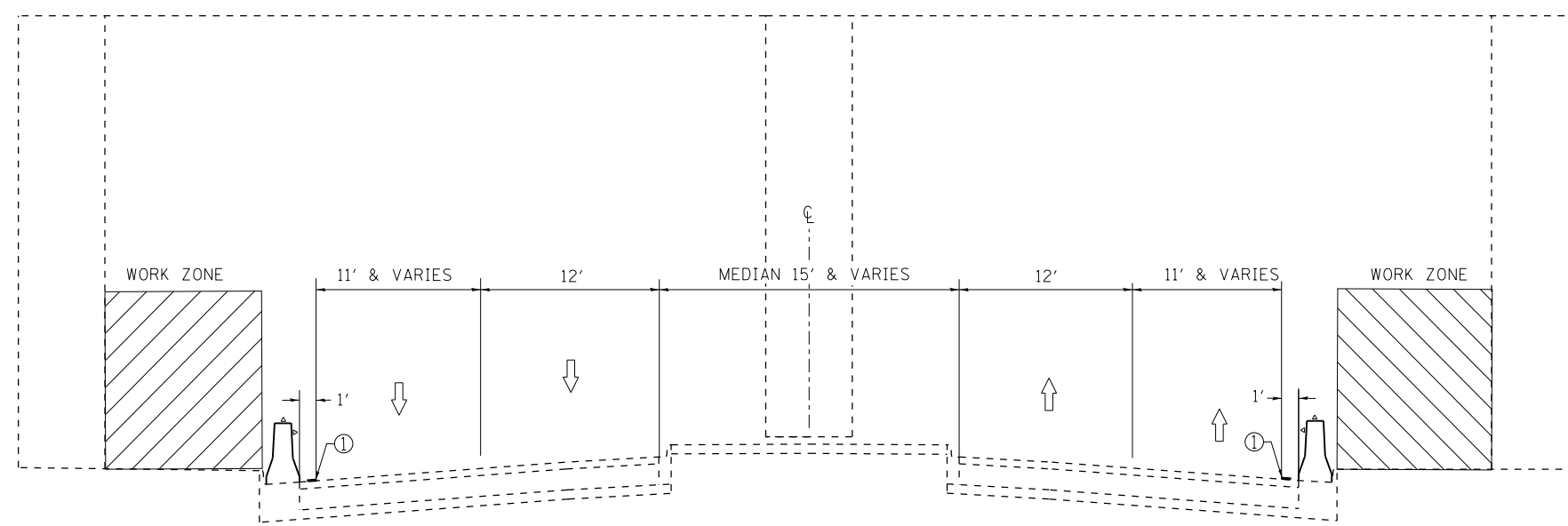
F.A.U. RTE. 3545	SECTION 2018-142-BR-1	COUNTY DUPAGE	TOTAL SHEETS 15	SHEET NO. 3
FED. ROAD DIST. NO. 1   ILLINOIS FED. AID PROJECT			CONTRACT NO. 62H80	

REV. - MS



TYPICAL SECTION

IL 56 (BUTTERFIELD RD)  
(FACING EAST)



STAGE CONSTRUCTION

IL 56 (BUTTERFIELD RD)  
(FACING EAST)

LEGEND

- ① PAVEMENT MARKING TAPE, TYPE IV, 4 INCH (WHITE)

MODEL: Default  
FILE NAME: J:\0844\BID\INTEG\Illinois\proj\FWIDOT\Documents\DOT Offices\District 1\Projects\01111519\CD\Drawings\Design\111519\st-typical.dgn

USER NAME = allababidiz	DESIGNED -	REVISED -
	DRAWN -	REVISED -
PLOT SCALE = 100.4722' / in.	CHECKED -	REVISED -
PLOT DATE = 2/4/2019	DATE -	REVISED -

**STATE OF ILLINOIS**  
**DEPARTMENT OF TRANSPORTATION**

**IL 56 (BUTTERFIELD) AT HIGHLAND SN:022-0154**  
**STAGING TYPICAL SECTIONS**

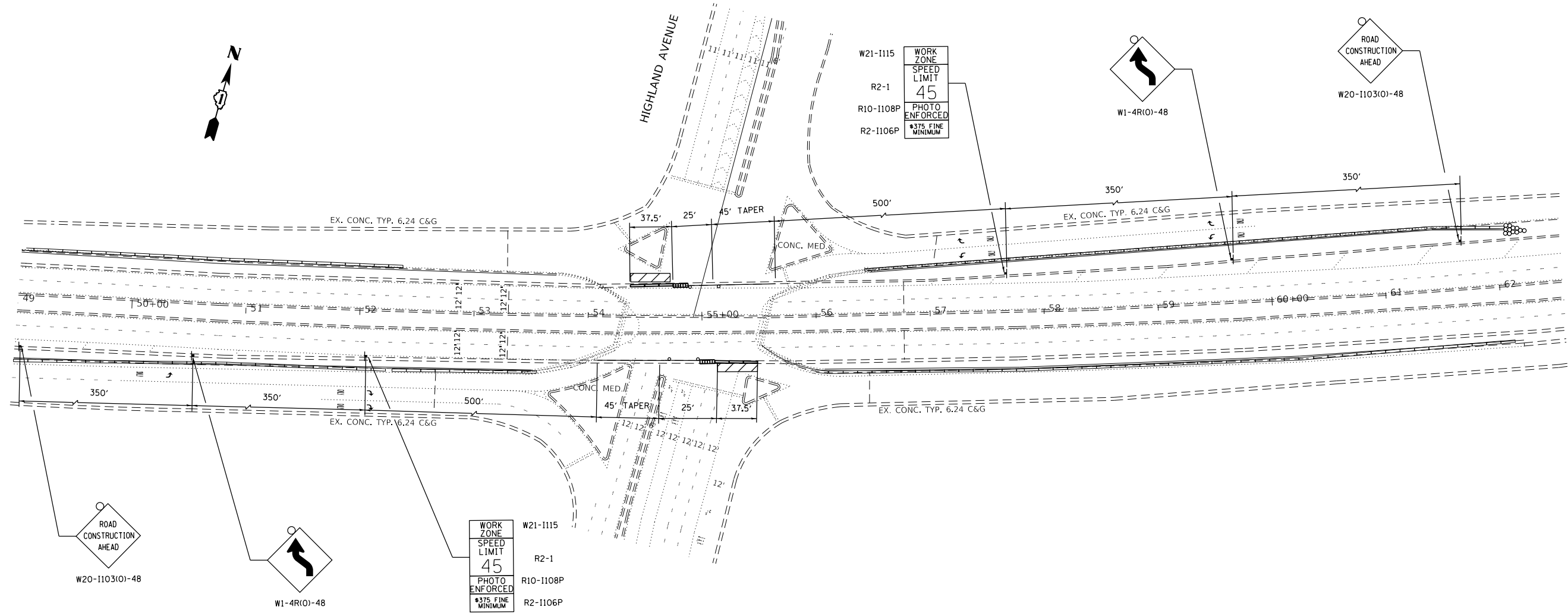
SCALE: SHEET OF SHEETS STA. TO STA.

F.A.U. RTE.	SECTION	COUNTY	TOTAL SHEETS	SHEET NO.
3545	2018-142-BR-1	DUPAGE	15	4
CONTRACT NO. 62H80				
ILLINOIS FED. AID PROJECT				

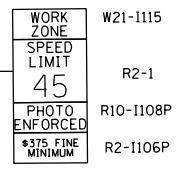
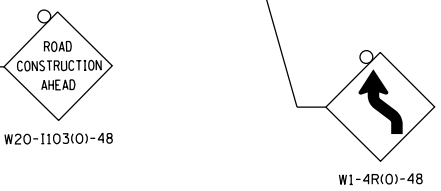
**LEGEND**

- ⊥ SIGN
- TYPE II BARRICADE, DRUM, OR VERTICAL BARRICADE  
TO BE PLACED AT 50' CENTERS IN TANGENTS,  
20' CENTERS IN TAPER, AND 10' CENTERS IN RADII/CURVES
- ▬ TEMPORARY CONCRETE BARRIER
- ▬ IMPACT ATTENUATORS, TEMPORARY (FULLY REDIRECTIVE,  
NARROW), TEST LEVEL 3
- ▨ WORK AREA

IL. ROUTE 56  
(BUTTERFIELD ROAD)



MODEL: Default  
 FILE: \\nas0101\pub\B&E\BID\NTEC\Illinois\gov\PIWDOT\Documents\DOT\_Offices\District 1\Projects\1115\9\CAD\Drawings\Drawings\111519-ahr-tpc\cal.dgn



USER NAME = allababidiz	DESIGNED -	REVISED -
PLOT SCALE = 100.0000' / in.	DRAWN -	REVISED -
PLOT DATE = 2/4/2019	CHECKED -	REVISED -
	DATE -	REVISED -

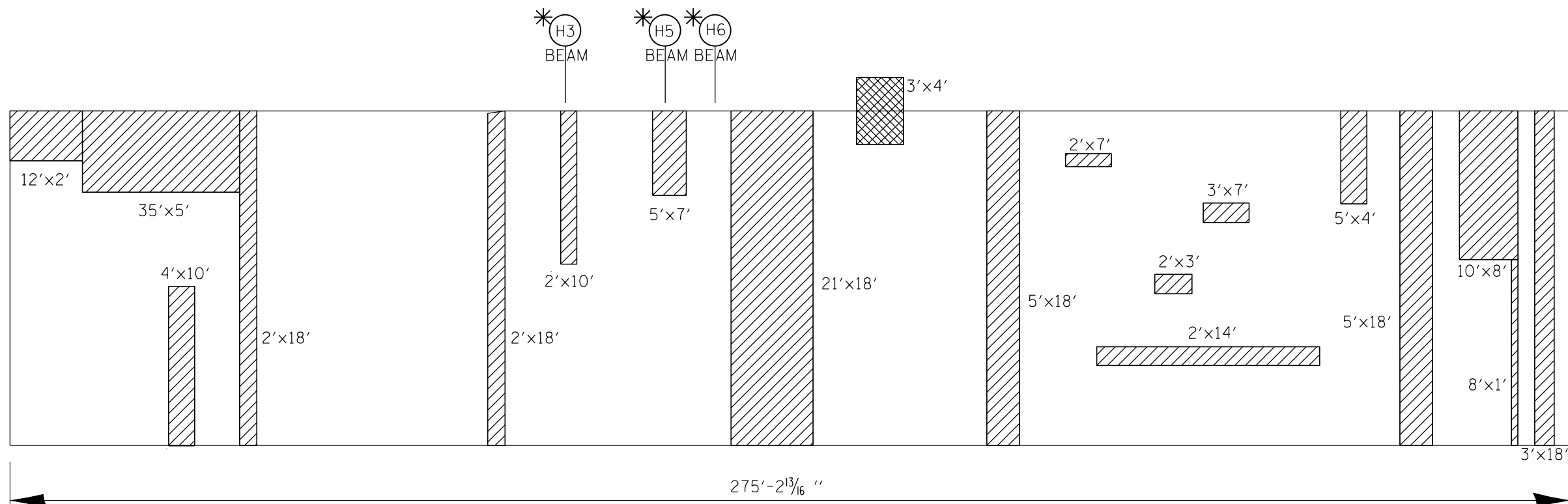
**STATE OF ILLINOIS  
DEPARTMENT OF TRANSPORTATION**

**IL 56 (BUTTERFIELD) AT HIGHLAND SN:022-0154  
TRAFFIC CONTROL PLAN**

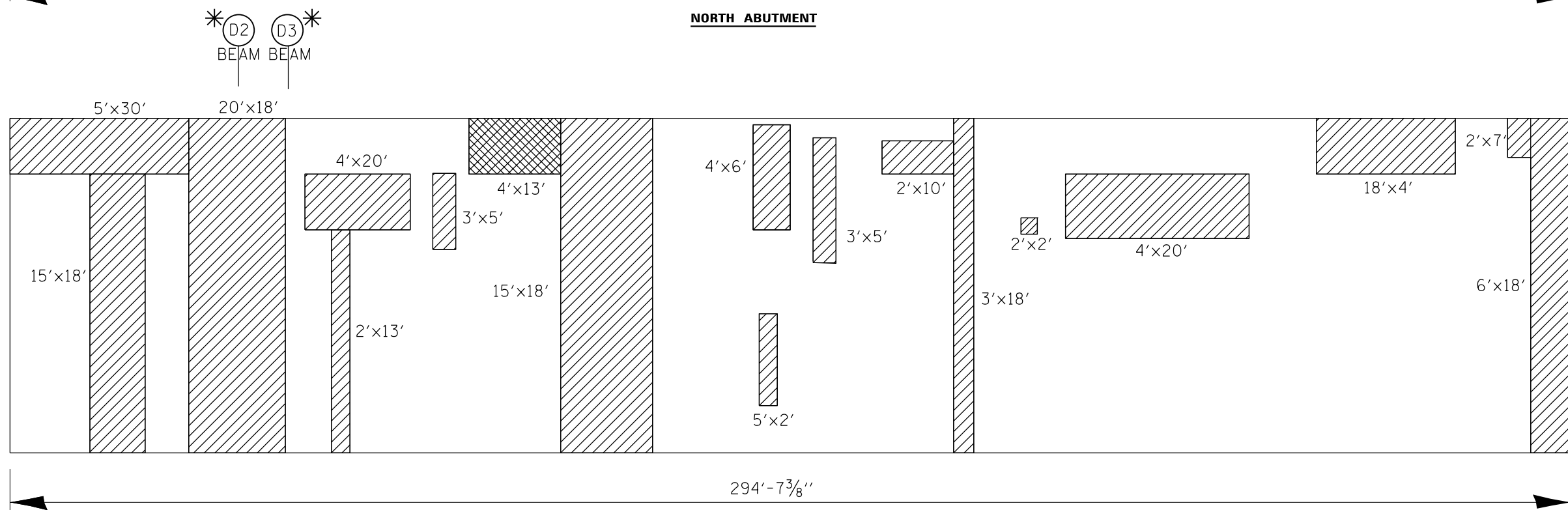
SCALE: SHEET OF SHEETS STA. TO STA.

F.A.U. RTE.	SECTION	COUNTY	TOTAL SHEETS	SHEET NO.
3545	2018-142-BR-1	DUPAGE	15	5
CONTRACT NO. 62H80			ILLINOIS FED. AID PROJECT	





**NORTH ABUTMENT**



**SOUTH ABUTMENT**

**BEAM REACTION TABLE**

	D2 - D3		H1 - H14	
	ABUTMENT	ABUTMENT	ABUTMENT	ABUTMENT
R <sub>Q</sub> (K)	37.3		20.4	
R <sub>L</sub> (K)	25.4		47.0	
R <sub>Imp.</sub> (K)	7.6		14.1	
R Total (K)	70.3		81.5	

**NOTE:**

\* TEMPORARY SHORING AND CRIBBING

- STRUCTURAL REPAIR OF CONCRETE ≤ 5"
- STRUCTURAL REPAIR OF CONCRETE > 5"

**TOTAL BILL OF MATERIALS (S.N.022-0154)**

ITEM	UNIT	QUANTITY
STRUCTURAL REPAIR OF CONCRETE DEPTH ≤ 5"	SO. FT.	3437
STRUCTURAL REPAIR OF CONCRETE > 5"	SO. FT.	102
TEMPORARY SHORING AND CRIBBING	EACH	5

**BILL OF MATERIALS (N & S ABUTMENT)**

ITEM	UNIT	QUANTITY
STRUCTURAL REPAIR OF CONCRETE DEPTH ≤ 5"	SO. FT.	2623
STRUCTURAL REPAIR OF CONCRETE > 5"	SO. FT.	78
TEMPORARY SHORING AND CRIBBING	EACH	5

MODEL: Default  
 FILE: \\nas01\proj\1108\B&E\BID\TEC\Illinois\proj\RID\DOT\Documents\BID\DOT\Office\BID\refct\_1\proj\cts\struct\1\CAD\data\Design\022-0154.dgn

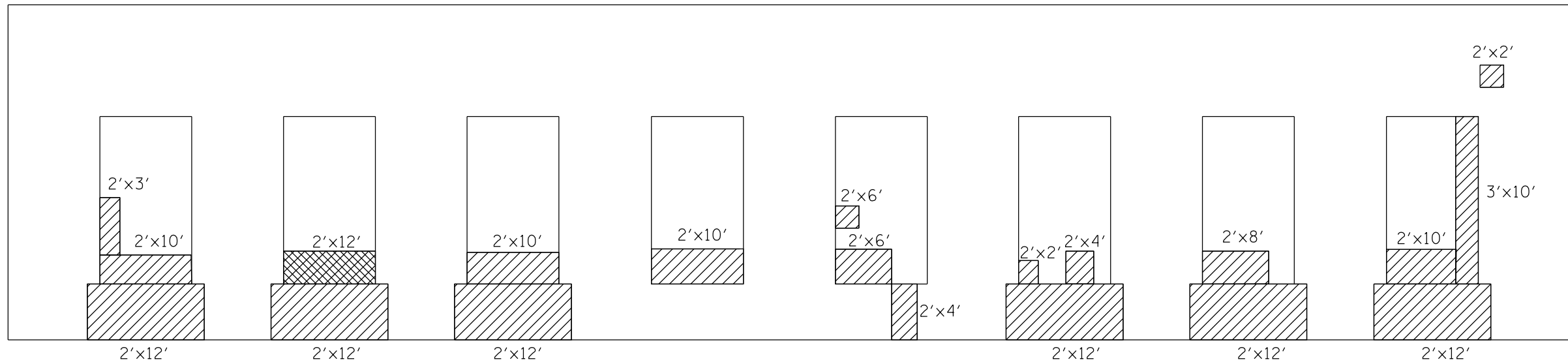
USER NAME = midyja	DESIGNED - MVT	REVISED -
	DRAWN - MVT	REVISED -
PLOT SCALE = 100.0000' / in.	CHECKED - AJM	REVISED -
PLOT DATE = 2/5/2019	DATE -	REVISED -

**STATE OF ILLINOIS  
DEPARTMENT OF TRANSPORTATION**

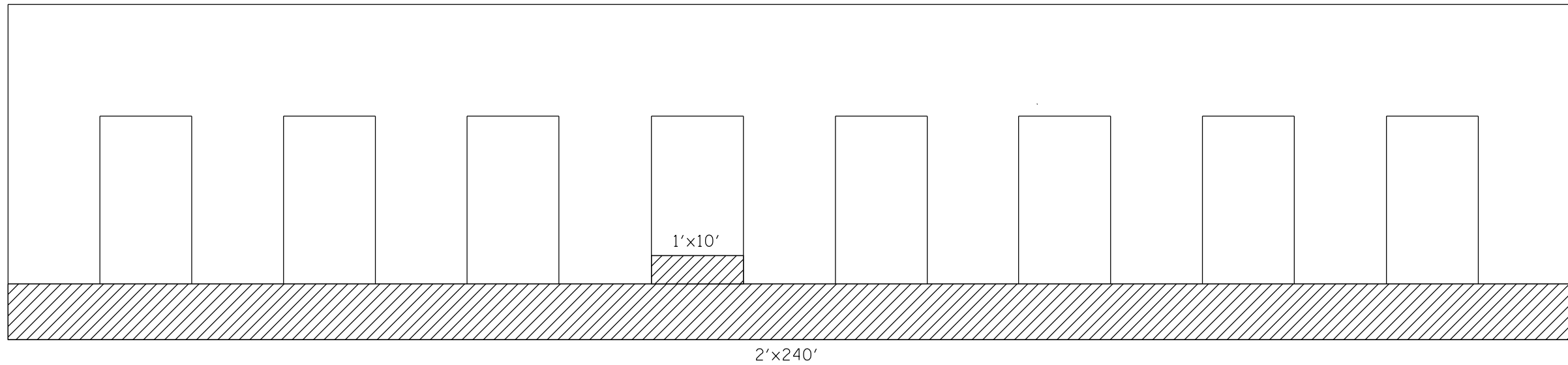
**IL 56 (BUTTERFIELD RD.) AT HIGHLAND AVE  
CONCRETE REPAIRS NORTH AND SOUTH ABUTMENTS  
S.N. 022-0154**

SCALE: SHEET 2 OF 3 SHEETS STA. TO STA.

F.A.U. RTE.	SECTION	COUNTY	TOTAL SHEETS	SHEET NO.
3545	2018-142-BR-1	DUPAGE	15	7
CONTRACT NO. 62H80			ILLINOIS FED. AID PROJECT	



**PIER NORTH FACE**



**PIER SOUTH FACE**

- STRUCTURAL REPAIR OF CONCRETE ≤ 5"
- STRUCTURAL REPAIR OF CONCRETE > 5"

**BILL OF MATERIALS (PIER)**

ITEM	UNIT	QUANTITY
STRUCTURAL REPAIR OF CONCRETE DEPTH ≤ 5"	SO. FT.	814
STRUCTURAL REPAIR OF CONCRETE > 5"	SO. FT.	24

MODEL: Default  
 FILE: \\nas0101\BIBID\NTEC\Illinois\pwr\PIW\DOT\Documents\DOT\_Offices\DI\ierfct\_1\Projects\Struct\1\CAD\Bata\Design\022-0154.dgn

USER NAME = midyja	DESIGNED - MVT	REVISED -
	DRAWN - MVT	REVISED -
PLOT SCALE = 100.0000' / in.	CHECKED - AJM	REVISED -
PLOT DATE = 2/5/2019	DATE -	REVISED -

**STATE OF ILLINOIS  
DEPARTMENT OF TRANSPORTATION**

**IL 56 (BUTTERFIELD RD) AT HIGHLAND AVE  
CONCRETE REPAIRS - PIER  
S.N. 022-0154**

SCALE: SHEET 3 OF 3 SHEETS STA. TO STA.

F.A.U. RTE.	SECTION	COUNTY	TOTAL SHEETS	SHEET NO.
3545	2018-142-BR-1	DUPAGE	15	8
CONTRACT NO. 62H80			ILLINOIS FED. AID PROJECT	



EXISTING STRUCTURE DATA  
 SOUTHBOUND BRIDGE NO. 022-0117  
 NORTHBOUND BRIDGE NO. 022-0018  
 EACH BRIDGE IS A THREE SPAN PRECAST  
 CONCRETE I-BEAM STRUCTURE WITH REINFORCED CONCRETE  
 DECK AND REINFORCED CONCRETE PIERS ON CONCRETE PILES  
 AND REINFORCED CONCRETE BENT ABUTMENTS.  
 TOTAL STRUCTURE LENGTH 206.30 FEET WITH  
 A SKEW ANGLE AT LOCAL TANGENT OF 36°-39'-33".

BENCHMARK - T.B.M.R. - ELEVATION 695.90  
 DESCRIPTION - CHISELED SQUARE CUT ON WINGWALL  
 N.E. CORNER OF BUTTERFIELD ROAD BRIDGE.

PROPOSED 6" x 6" SILLAR  
 DRAIN (TYPICAL)  
 BACK OF DECK. STA. 571+55.25  
 12.25%  
 2'-0" Edge of New  
 Structure (TYPICAL)

SHOULDER  
 FRONT BANKWAY  
 SHOULDER  
 FRONT BANKWAY  
 SHOULDER  
 FRONT BANKWAY  
 BACK OF DECK  
 FRONT BANKWAY

PROPOSED APPROACH BANKWAY  
 FOR OF BENT ABUTMENT  
 STA. 571+55.25  
 12.25%  
 P.C. STA. 571+10.15

LOCAL TANGENT  
 @ STA. 572+30.36  
 NORTHBOUND

LOCAL TANGENT  
 @ STA. 572+30.36  
 SOUTHBOUND

TRAFFIC BARRIER  
 BRICKLITE TYPE 7

EDGE APPROACH  
 SHOULDER REPAIRS  
 SEE PROPOSED PLANS (APP)

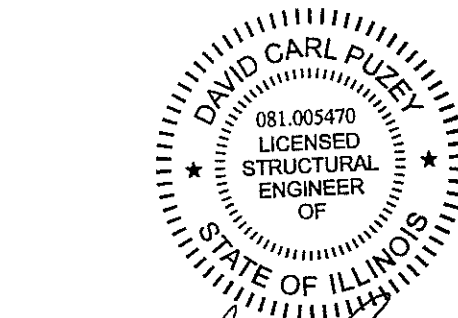
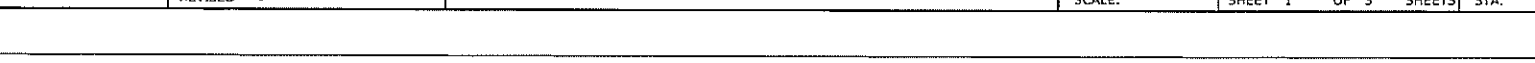
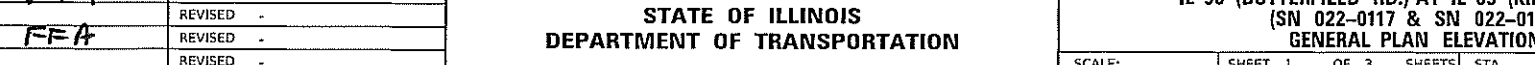
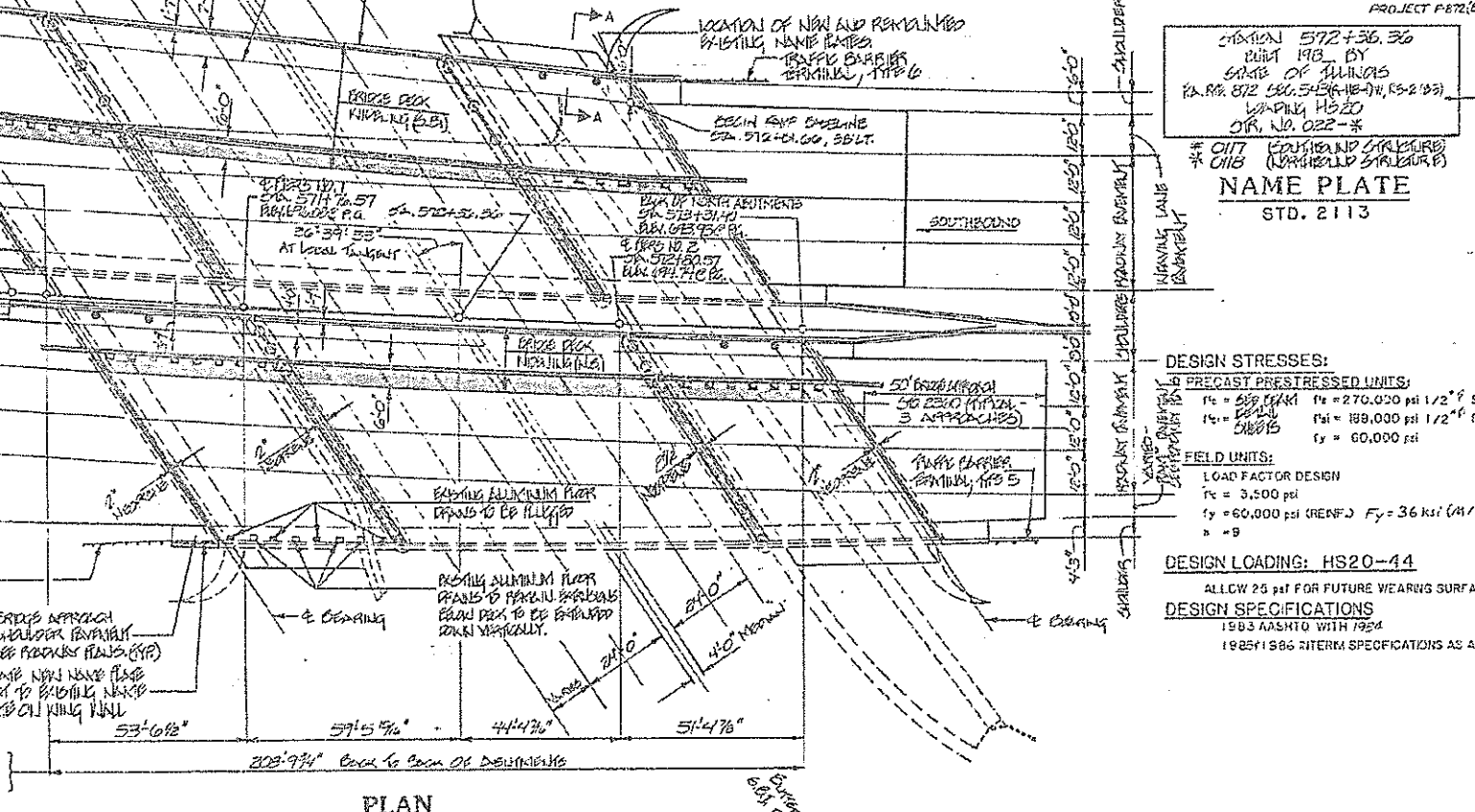
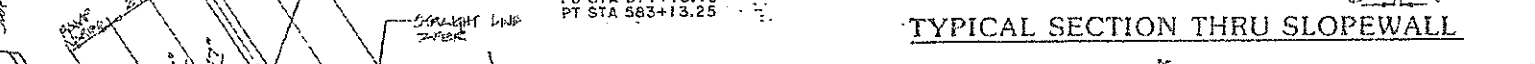
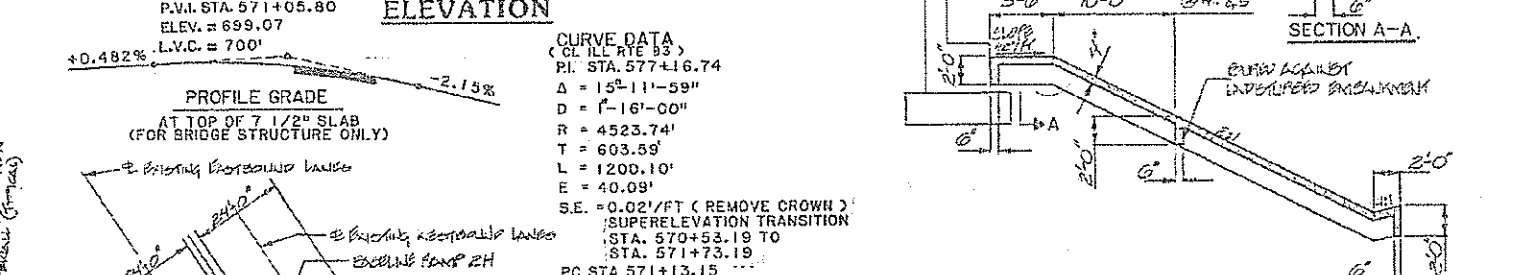
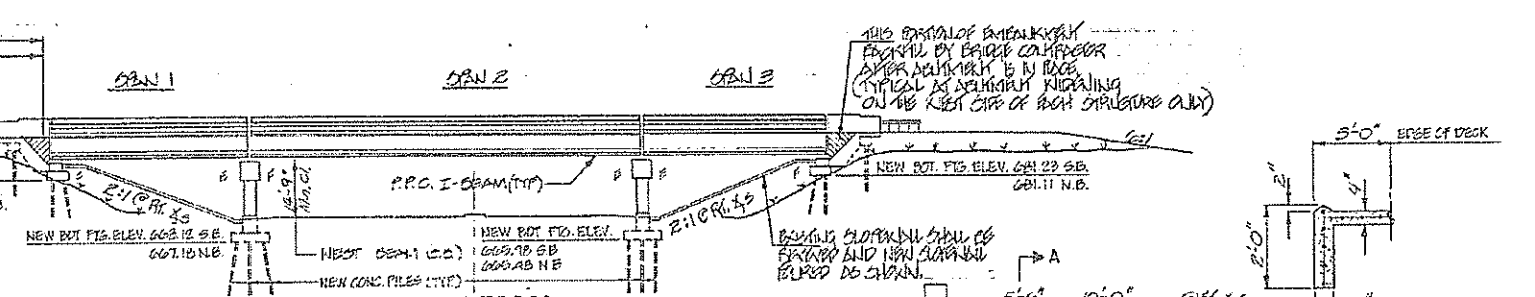
LOCATE NEW NAME PLATE  
 NEXT TO BRICKLITE MARKER  
 BACK OF KING WALL

ALONG LOCAL  
 TANGENT LINE  
 @ STA. 572+30.36

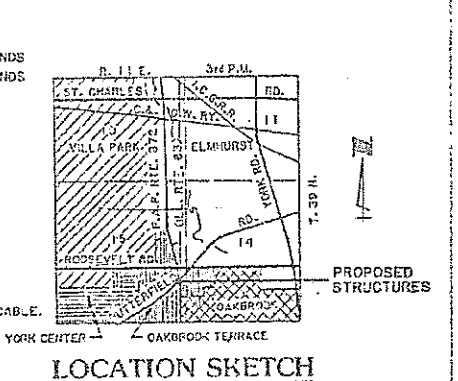
PROPOSED APPROACH  
 SHOULDER REPAIRS  
 SEE PROPOSED PLANS (APP)

LOCATE NEW NAME PLATE  
 NEXT TO BRICKLITE MARKER  
 BACK OF KING WALL

ALONG LOCAL  
 TANGENT LINE  
 @ STA. 572+30.36

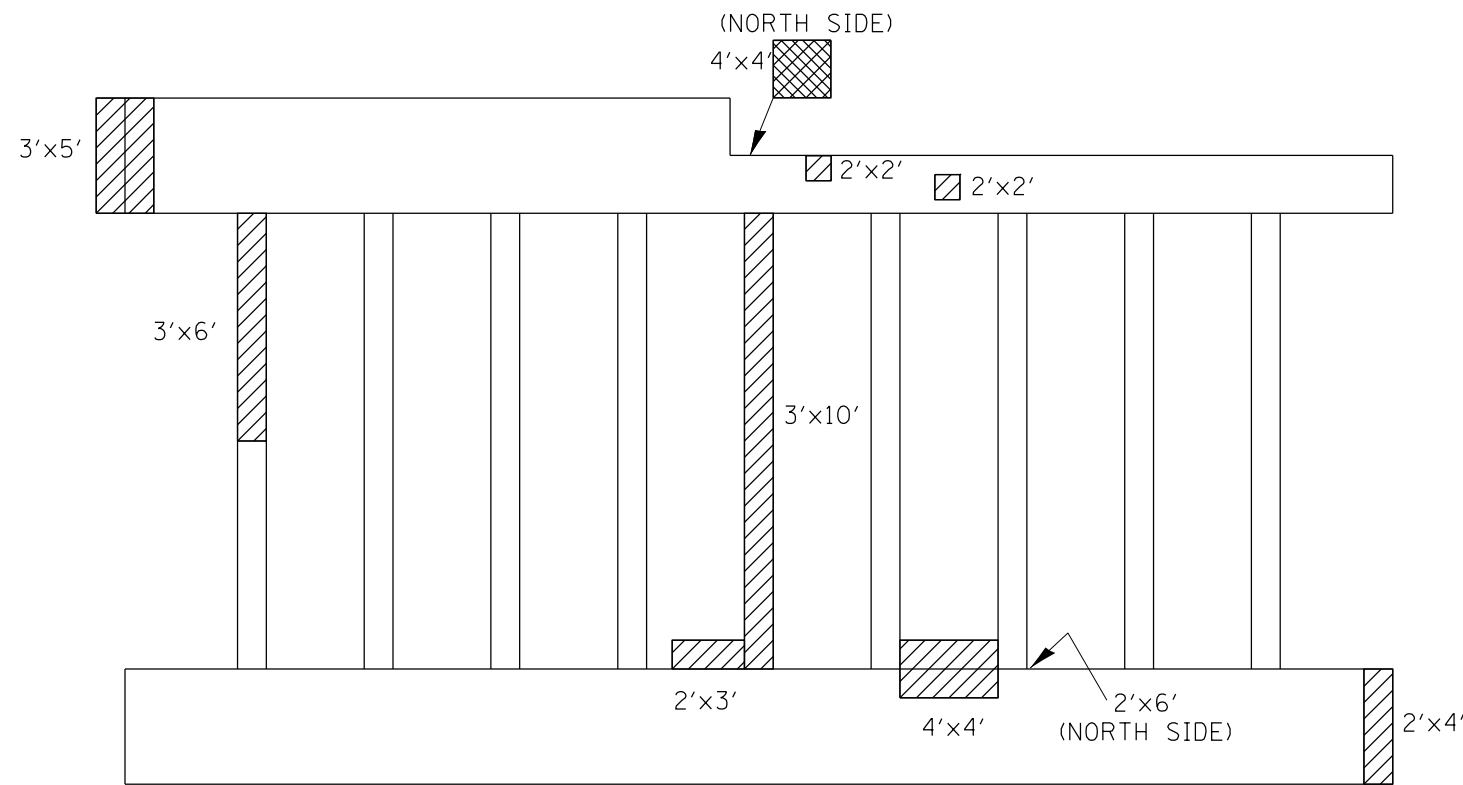


Dr. Carl Puzey 3/18/19  
 Expires 1/30/20

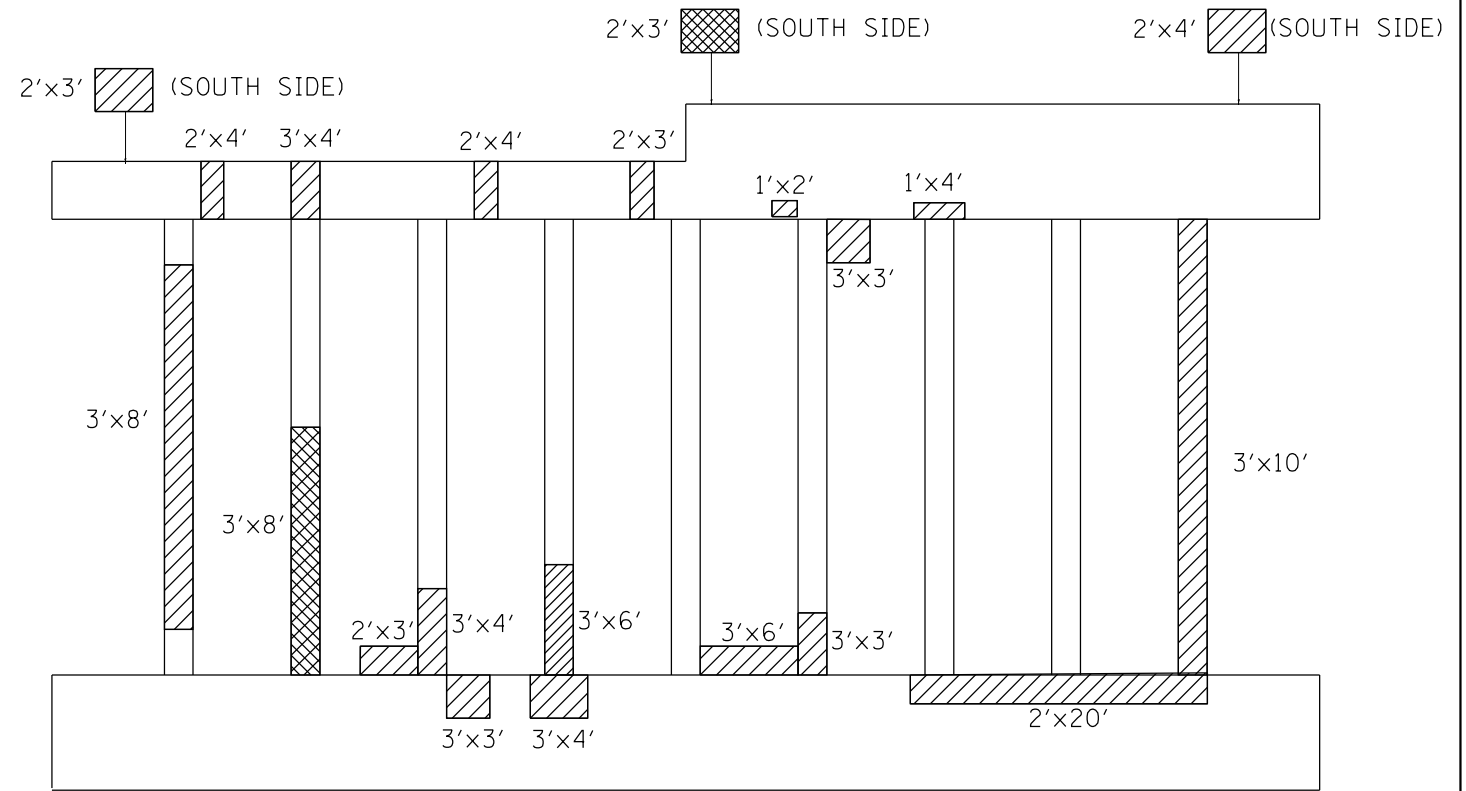


MODEL D:\dwg\...  
 FILE NAME: p:\148mcom\del\ilhoth\user\N1001\Documents\101...  
 PROJECT: 111519C\PC\DDA\del\m111519-sh\typical.dwg

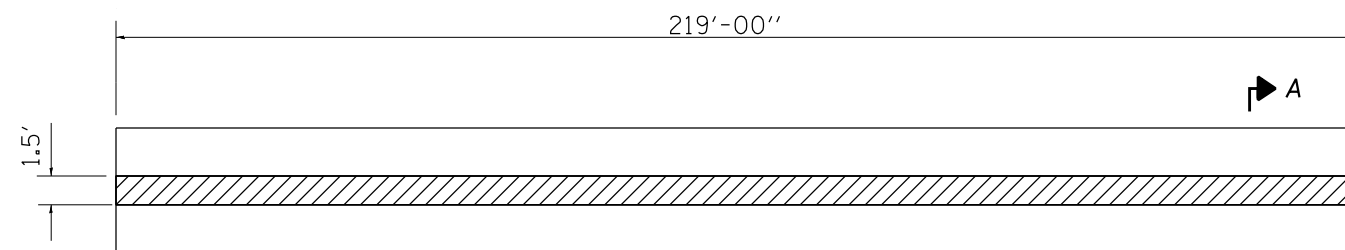
USER NAME = m11yjs	DESIGNED - JAM	REVISED -	STATE OF ILLINOIS DEPARTMENT OF TRANSPORTATION	IL 56 (BUTTERFIELD RD.) AT IL 83 (KINGERY HWY) (SN 022-0117 & SN 022-0118) GENERAL PLAN ELEVATION	F.A.U. RTE. 3545	SECTION 2018-142-BR-1	COUNTY	TOTAL SHEETS 15	SHEET NO. 9
PLOT SCALE = 100.4722' / in.	CHECKED - FFA	REVISED -			SCALE: SHEET 1 OF 3 SHEETS STA. TO STA.	DUPAGE	CONTRACT NO. 62H80		ILLINOIS FED. AID PROJECT
PLOT DATE = 3/11/2019	DATE -	REVISED -							



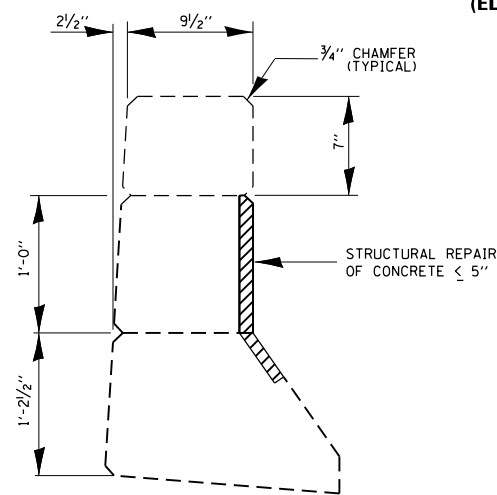
**NORTH PIER  
LOOKING NORTH**



**SOUTH PIER  
LOOKING SOUTH**



**EAST PARAPET  
(ELEVATION)**



**SECTION A-A**

**BILL OF MATERIALS (PARAPET)**

ITEM	UNIT	QUANTITY
STRUCTURAL REPAIR OF CONCRETE DEPTH ≤ 5"	SO.FT.	328.5

**TOTAL BILL OF MATERIALS (S.N. 022-0117)**

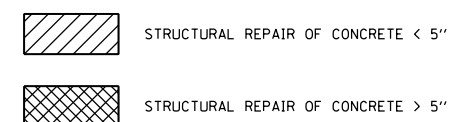
ITEM	UNIT	QUANTITY
STRUCTURAL REPAIR OF CONCRETE DEPTH ≤ 5"	SO. FT.	682.5
STRUCTURAL REPAIR OF CONCRETE > 5"	SO. FT.	46

**BILL OF MATERIALS (SOUTH PIER)**

ITEM	UNIT	QUANTITY
STRUCTURAL REPAIR OF CONCRETE DEPTH ≤ 5"	SO. FT.	241
STRUCTURAL REPAIR OF CONCRETE > 5"	SO. FT.	30

**BILL OF MATERIALS (NORTH PIER)**

ITEM	UNIT	QUANTITY
STRUCTURAL REPAIR OF CONCRETE DEPTH ≤ 5"	SO. FT.	113
STRUCTURAL REPAIR OF CONCRETE > 5"	SO. FT.	16

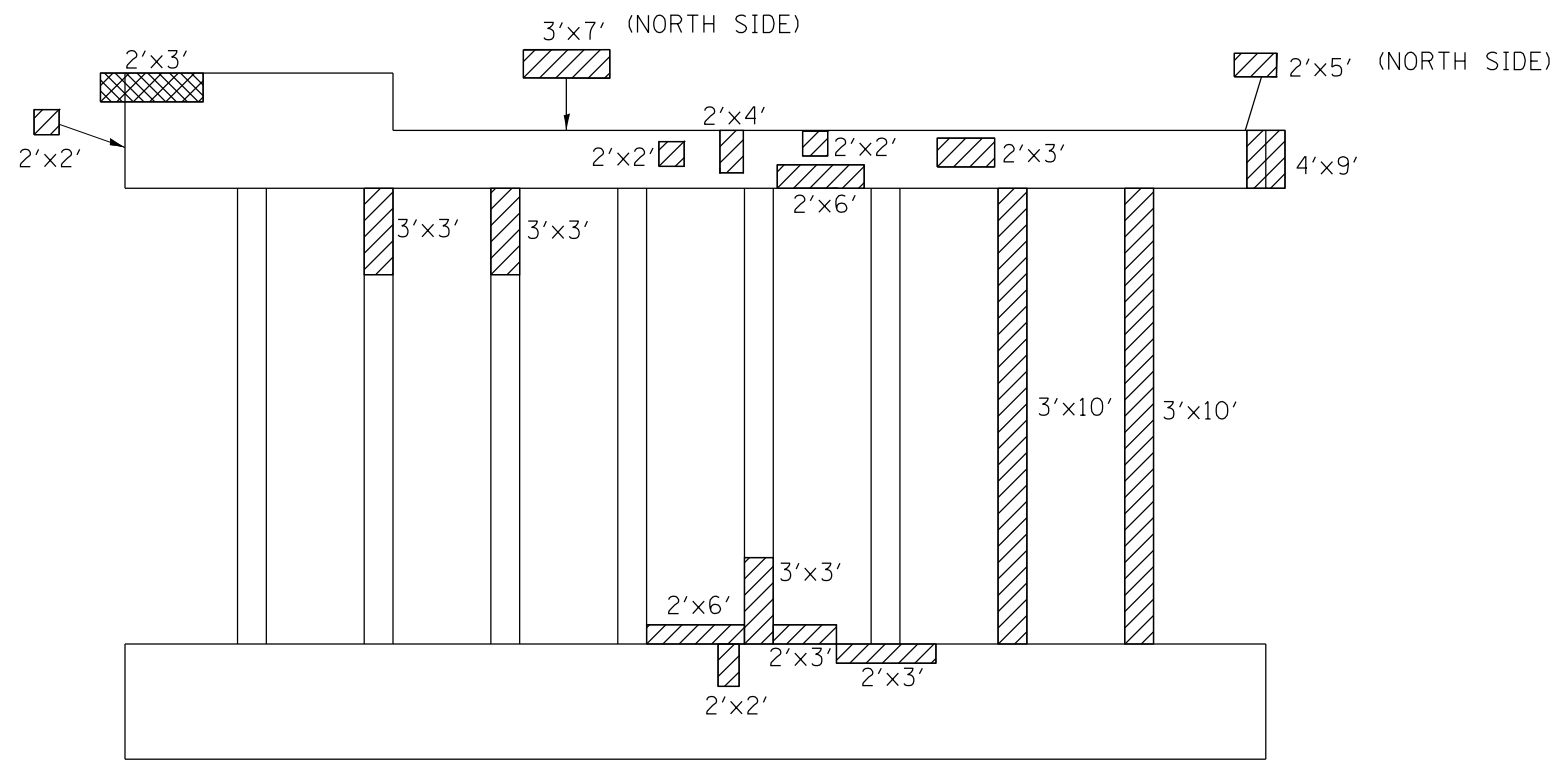


**STATE OF ILLINOIS  
DEPARTMENT OF TRANSPORTATION**

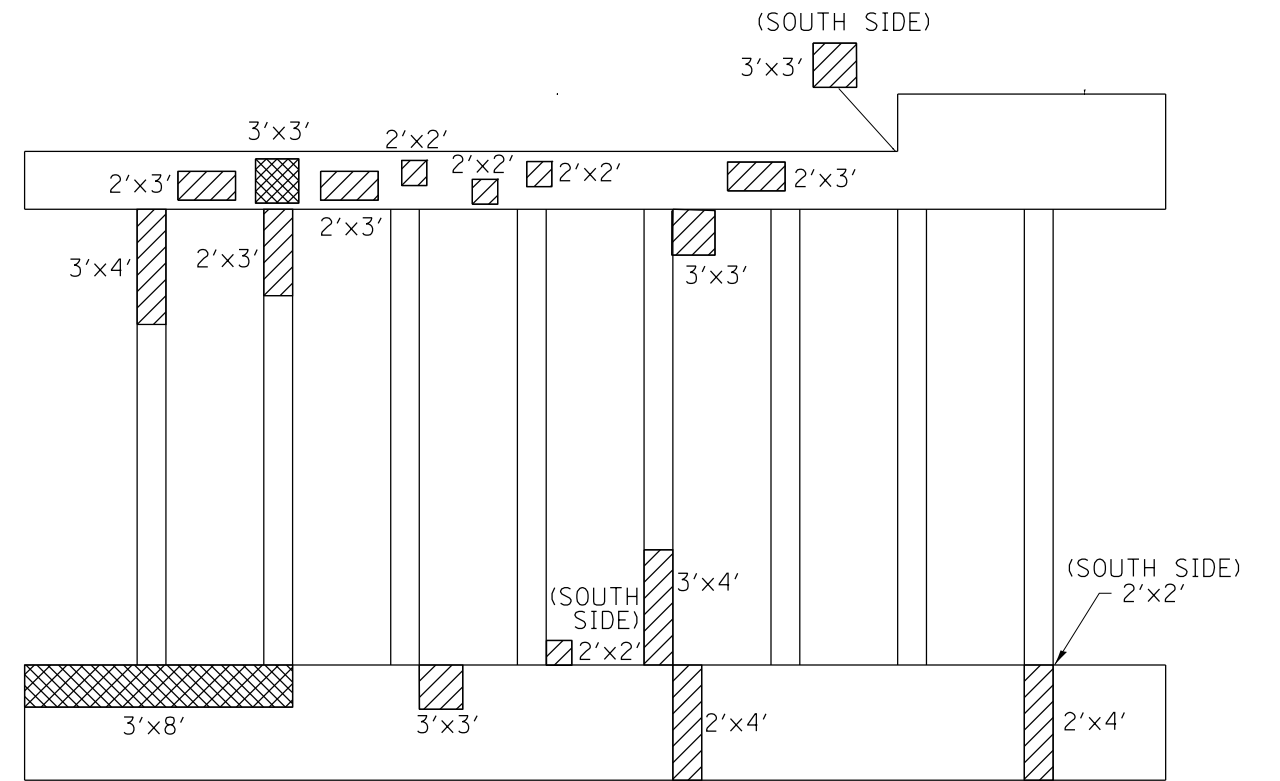
**IL. 56 (BUTTERFIELD RD) AT IL. 83 SB (KINGERY HWY)  
CONCRETE REPAIRS  
S.N. 022-0117**

F.A.U. RTE.	SECTION	COUNTY	TOTAL SHEETS	SHEET NO.
3545	2018-142-BR-1	DUPAGE	15	10
CONTRACT NO. 62H80				
ILLINOIS FED. AID PROJECT				

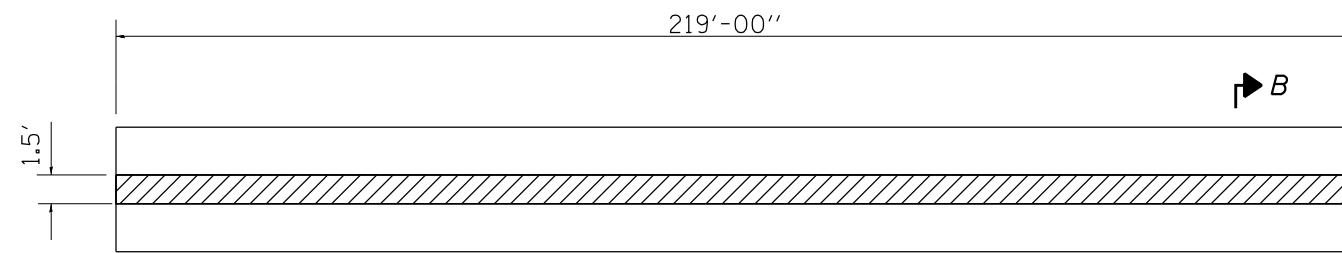
SCALE: SHEET 2 OF 3 SHEETS STA. TO STA.



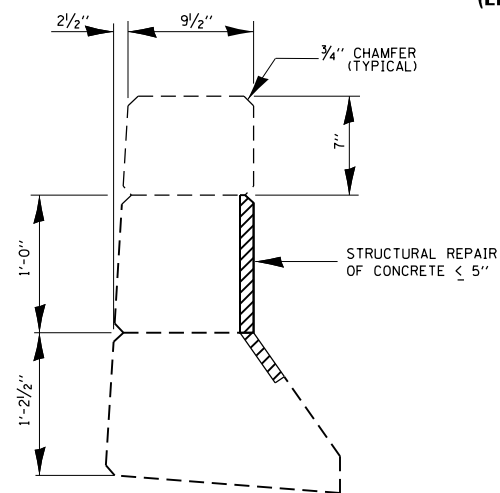
**NORTH PIER  
LOOKING NORTH**



**SOUTH PIER  
LOOKING SOUTH**



**EAST PARAPET  
(ELEVATION)**



**SECTION B-B**

**BILL OF MATERIALS (PARAPET)**

ITEM	UNIT	QUANTITY
STRUCTURAL REPAIR OF CONCRETE DEPTH < 5"	SO.FT.	328.5

**TOTAL BILL OF MATERIALS (S.N. 022-0118)**

ITEM	UNIT	QUANTITY
STRUCTURAL REPAIR OF CONCRETE DEPTH < 5"	SO. FT.	659.5
STRUCTURAL REPAIR OF CONCRETE > 5"	SO. FT.	39

**BILL OF MATERIALS (SOUTH PIER)**

ITEM	UNIT	QUANTITY
STRUCTURAL REPAIR OF CONCRETE DEPTH < 5"	SO. FT.	111
STRUCTURAL REPAIR OF CONCRETE > 5"	SO. FT.	33

**BILL OF MATERIALS (NORTH PIER)**

ITEM	UNIT	QUANTITY
STRUCTURAL REPAIR OF CONCRETE DEPTH < 5"	SO. FT.	220
STRUCTURAL REPAIR OF CONCRETE > 5"	SO. FT.	6

- STRUCTURAL REPAIR OF CONCRETE < 5"
- STRUCTURAL REPAIR OF CONCRETE > 5"

MODEL: Default  
 FILE NAME: p:\ul\B&E\BID\NTEC\Illinois\poc\p\WIDOT\Documents\DOT\_Offices\BID\etf\_1\Projects\Structure\1\CAD\B&E\Drawings\022-0117.dgn

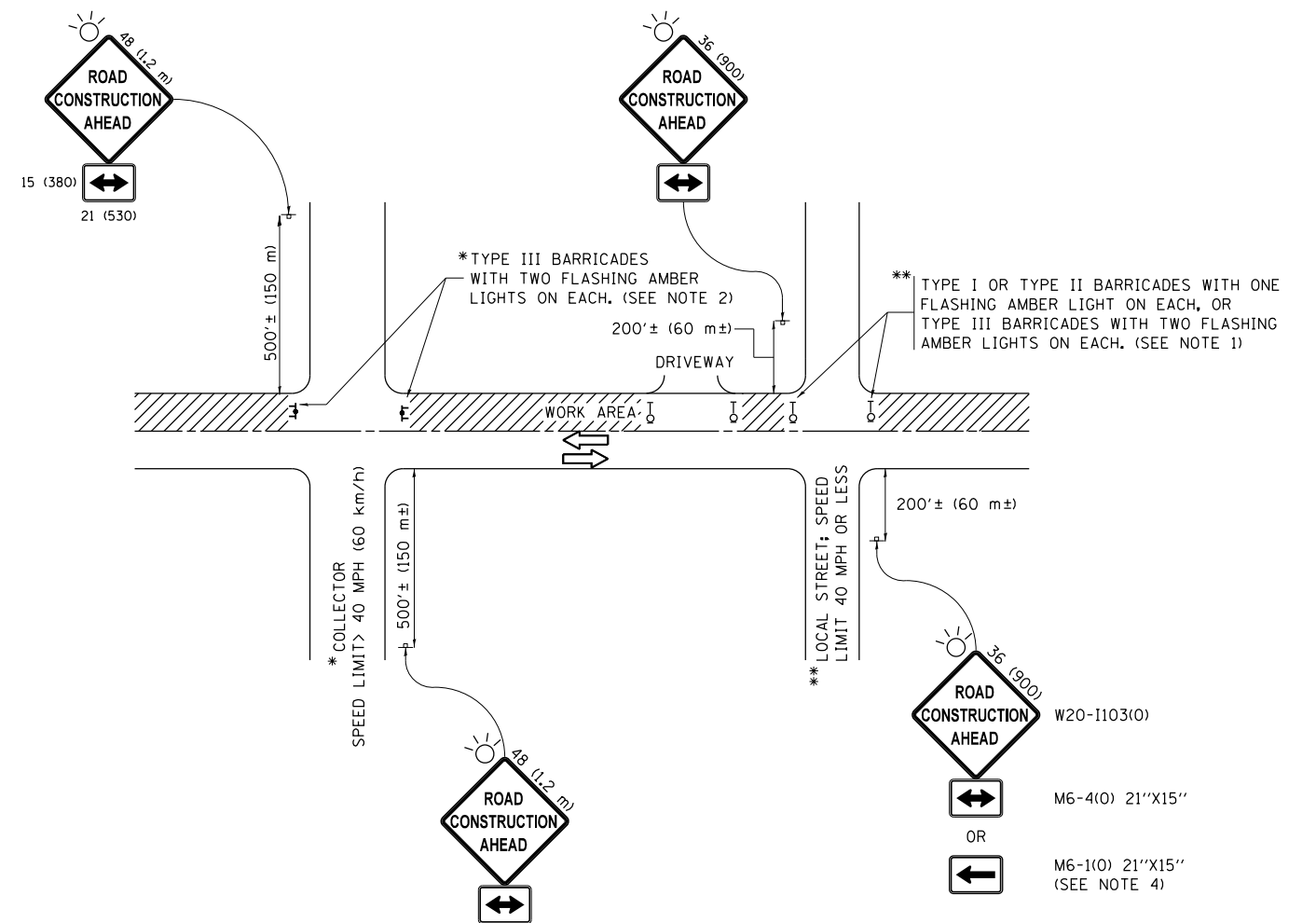
USER NAME = midyja	DESIGNED - MVT	REVISED -
	DRAWN - MVT	REVISED -
PLOT SCALE = 100.0000' / in.	CHECKED - AJM	REVISED -
PLOT DATE = 2/5/2019	DATE -	REVISED -

**STATE OF ILLINOIS  
DEPARTMENT OF TRANSPORTATION**

**IL. 56 (BUTTERFIELD ROAD) AT IL. 83 NB (KINGERY HWY)  
CONCRETE REPAIRS  
S.N. 022-0118**

SCALE: SHEET 3 OF 3 SHEETS STA. TO STA.

F.A.U. RTE.	SECTION	COUNTY	TOTAL SHEETS	SHEET NO.
3545	2018-142-BR-1	DUPAGE	15	11
CONTRACT NO. 62H80				
ILLINOIS FED. AID PROJECT				



**NOTES:**

1. SIDE ROAD WITH A SPEED LIMIT OF 40 MPH (60 km/h) OR LESS AS SHOWN ON THE DRAWING AND AS DIRECTED BY THE ENGINEER:
  - a) ONE "ROAD CONSTRUCTION AHEAD" SIGN 36 x 36 (900x900) WITH A FLASHER MOUNTED ON IT APPROXIMATELY 200' (60 m) IN ADVANCE OF THE MAIN ROUTE.
  - b) THE CLOSED PORTION OF THE MAIN ROUTE SHALL BE PROTECTED BY BLOCKING WITH TYPE I, TYPE II OR TYPE III BARRICADES, 1/3 OF THE CROSS SECTION OF THE CLOSED PORTION.
2. SIDE ROAD WITH A SPEED LIMIT GREATER THAN 40 MPH (60 km/h) AS SHOWN ON THE DRAWING AND AS DIRECTED BY THE ENGINEER:
  - a) ONE "ROAD CONSTRUCTION AHEAD" SIGN 48 x 48 (1.2 m x 1.2 m) WITH A FLASHER MOUNTED ON IT APPROXIMATELY 500' (150 m) IN ADVANCE OF THE MAIN ROUTE.
  - b) THE CLOSED PORTION OF THE MAIN ROUTE SHALL BE PROTECTED BY BLOCKING WITH TYPE III BARRICADES, 1/2 OF THE CROSS SECTION OF THE CLOSED PORTION.
3. CONES MAY BE SUBSTITUTED FOR BARRICADES OR DRUMS AT HALF THE SPACING DURING DAY OPERATIONS. CONES SHALL BE A MINIMUM OF 28 (710) IN HEIGHT.
4. WHEN THE SIDE ROAD LIES BETWEEN THE BEGINNING OF THE MAINLINE SIGNING AND THE WORK ZONE, A SINGLE HEADED ARROW (M6-1) SHALL BE USED IN LIEU OF THE DOUBLE HEADED ARROW (M6-4).
5. WHEN WORK IS BEING PERFORMED ON A SIDE ROAD OR DRIVEWAY, FOLLOW THE APPLICABLE STANDARD(S). THE DIRECTIONAL ARROW (M6-1 OR M6-4) SHALL BE COVERED OR REMOVED WHEN NO LONGER CONSISTENT WITH THE TRAFFIC CONTROL SET-UP.
6. ADVANCE WARNING SIGNS ARE TO BE OMITTED ON DRIVEWAYS UNLESS OTHERWISE SPECIFIED IN THE PLANS OR BY THE ENGINEER.
7. THE TRAFFIC CONTROL AND PROTECTION FOR SIDE ROADS, INTERSECTIONS, AND DRIVEWAYS SHALL BE INCLUDED IN THE COST OF SPECIFIED TRAFFIC CONTROL STANDARDS OR ITEMS.

All dimensions are in inches (millimeters) unless otherwise shown.

FILE NAME =	USER NAME = allababdz	DESIGNED - L.H.A.	REVISED - A. HOUSEH 10-15-96
pw\11084EBIDINTEG\illinois.gov\PIWIDOT\Documents\IDOT Offices\District 1\Projects\DI1151\DRAMA\Design\DistStd.dgn			REVISED - T. RAMMACHER 01-06-00
Default	PLOT SCALE = 100.0000' / in.	CHECKED -	REVISED - A. SCHUETZE 07-01-13
	PLOT DATE = 2/4/2019	DATE - 06-89	REVISED - A. SCHUETZE 09-15-16

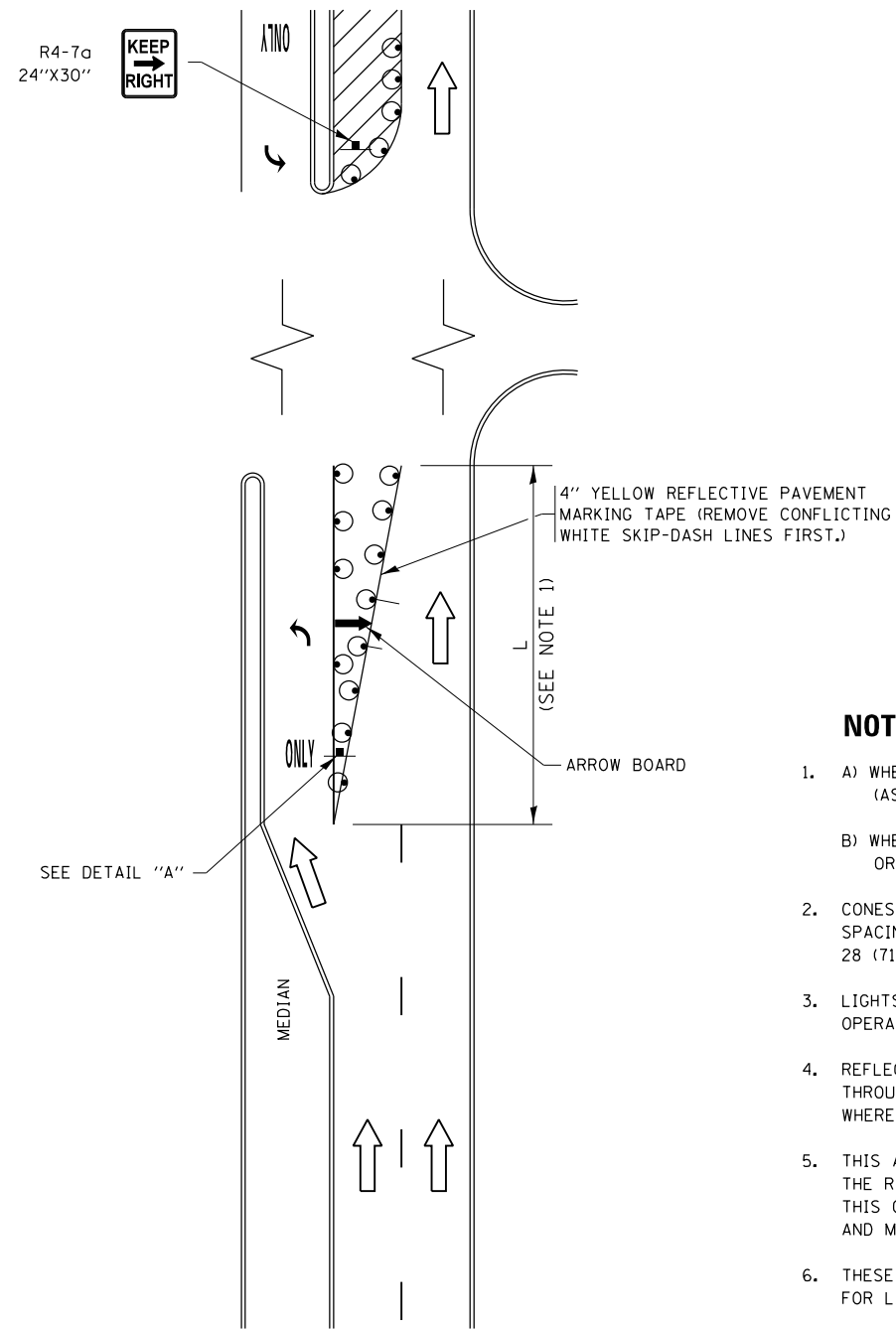
**STATE OF ILLINOIS  
DEPARTMENT OF TRANSPORTATION**

**TRAFFIC CONTROL AND PROTECTION FOR  
SIDE ROADS, INTERSECTIONS, AND DRIVEWAYS**

SCALE: NONE SHEET 1 OF 1 SHEETS STA. TO STA.

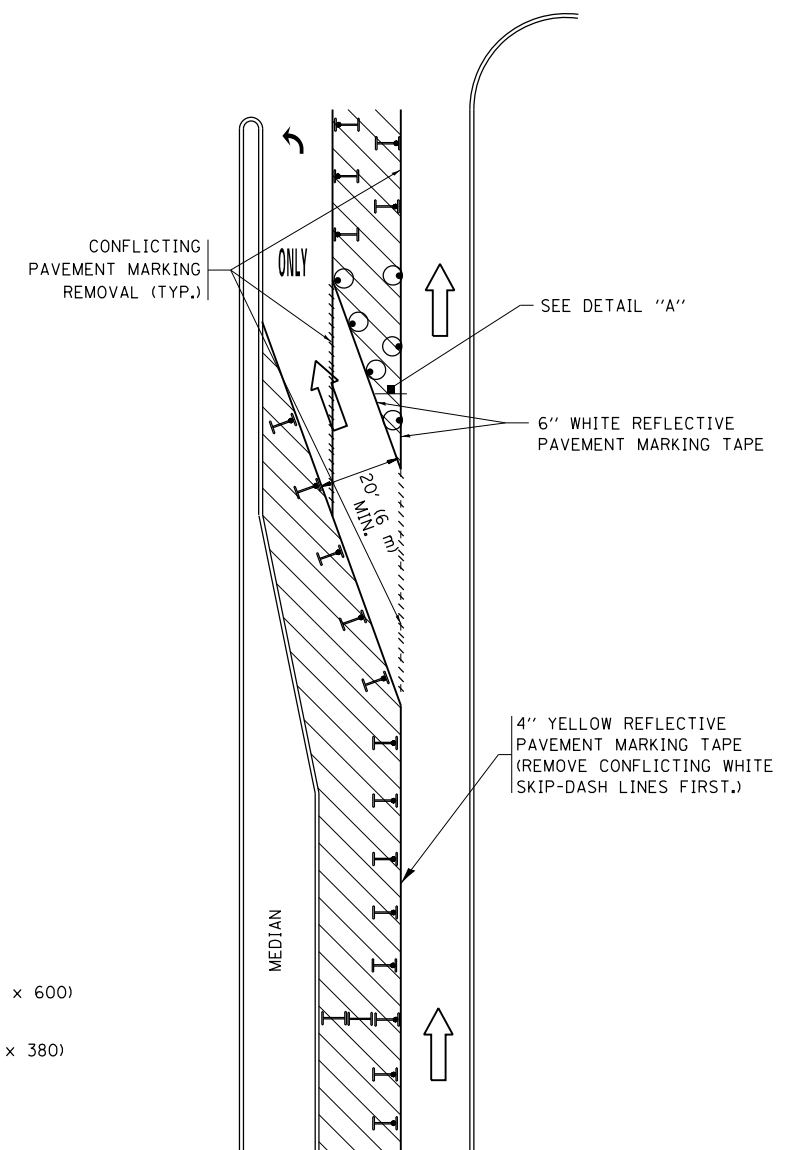
F.A.U. RTE.	SECTION	COUNTY	TOTAL SHEETS	SHEET NO.
3545	2018-142-BR-1	DUPAGE	15	12
<b>TC-10</b>			<b>CONTRACT NO. 62H80</b>	
ILLINOIS FED. AID PROJECT				

# TURN BAY ENTRANCE AT START OF LANE CLOSURE TAPER

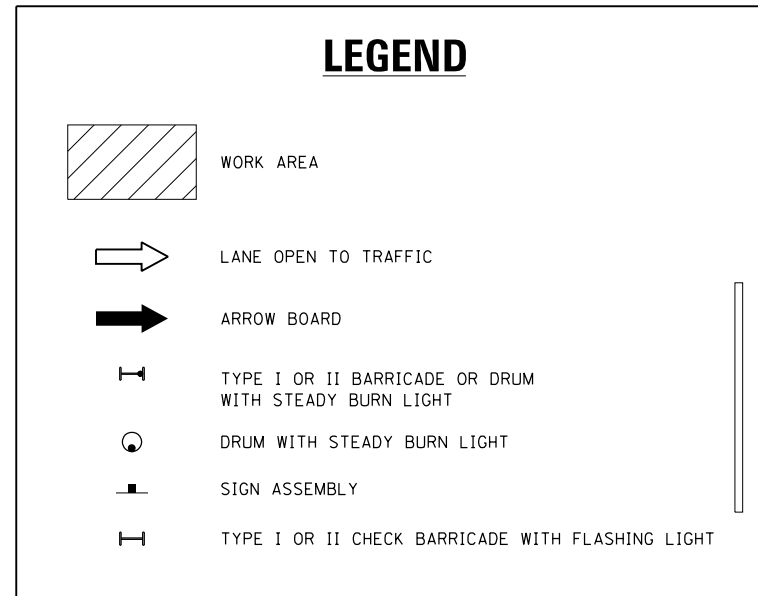


**FIGURE 1**

# TURN BAY ENTRANCE WITHIN A LANE CLOSURE

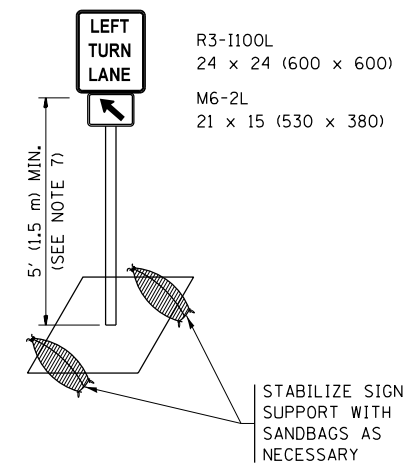


**FIGURE 2**



**NOTES:**

1. A) WHEN "L" IS  $\leq$  THE STORAGE LENGTH OF THE TURN LANE (AS SHOWN IN FIG. 1), USE FIGURE 1.  
 B) WHEN "L" IS  $>$  THE STORAGE LENGTH OF THE TURN LANE OR THE TURN LANE IS WITHIN THE LANE CLOSURE, USE FIGURE 2.
2. CONES MAY BE SUBSTITUTED FOR BARRICADES OR DRUMS AT HALF THE SPACING DURING DAY OPERATIONS. CONES SHALL BE A MINIMUM OF 28 (710) IN HEIGHT.
3. LIGHTS WILL NOT BE REQUIRED ON BARRICADES OR DRUMS FOR DAY OPERATIONS. ALL LIGHTS SHALL BE MONODIRECTIONAL.
4. REFLECTIVE TEMPORARY PAVEMENT MARKINGS SHALL BE PLACED THROUGHOUT THE BARRICADED AREAS OF EACH TURN BAY AS SHOWN WHERE THE CLOSURE TIME IS GREATER THAN FOURTEEN (14) DAYS.
5. THIS APPLICATION ALSO APPLIES WHEN WORK IS BEING PERFORMED IN THE RIGHT LANE(S) AND THE RIGHT TURN BAY IS TO REMAIN OPEN. UNDER THIS CONDITION, "RIGHT TURN LANE" R3-1100R 24 x 24 (600 x 600) AND M6-2R 21 x 15 (530 x 380) SHALL BE USED.
6. THESE CONTROLS SHALL SUPPLEMENT MAINLINE TRAFFIC CONTROL FOR LANE CLOSURES.
7. THE SIGNS SHALL BE MOUNTED ABOVE THE BARRICADES/DRUMS ON SEPARATE SIGN SUPPORTS THAT MEET NCHRP 350 OR MASH PREQUIREMENTS.
8. TRAFFIC CONTROL AND PROTECTION AT TURN BAYS (TO REMAIN OPEN TO TRAFFIC) SHALL BE INCLUDED IN THE COST OF SPECIFIED TRAFFIC CONTROL STANDARDS OR ITEMS.

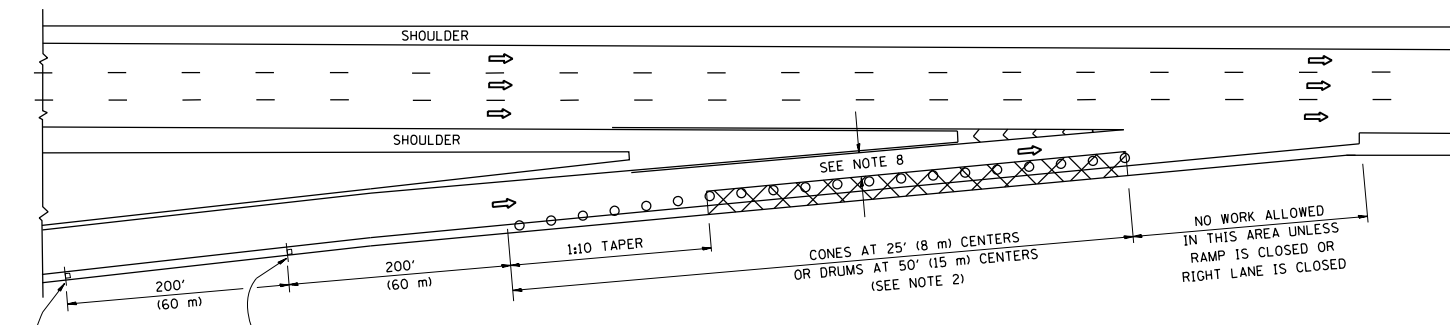


**DETAIL A**

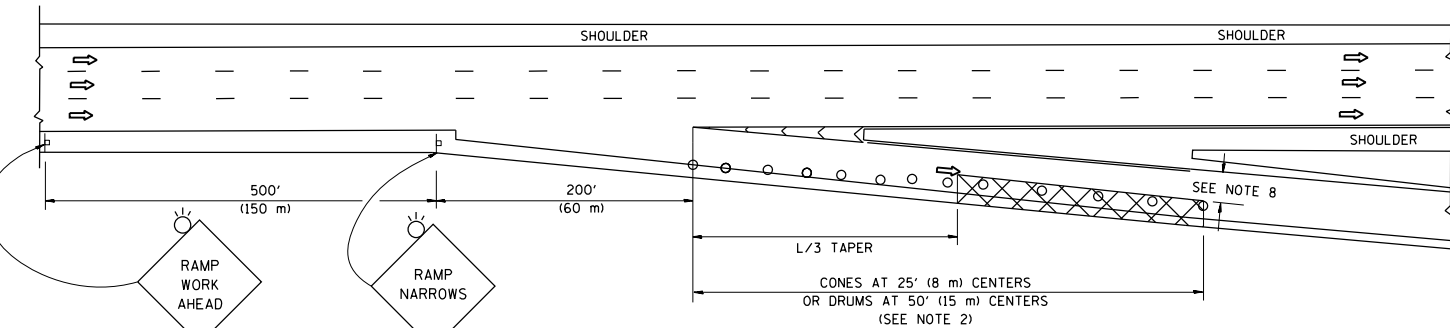
All dimensions are in inches (millimeters) unless otherwise shown.

FILE NAME =	USER NAME = allababdz	REVISED - T. RAMMACHER 09-08-94	REVISED - R. BORO 09-14-09	<b>STATE OF ILLINOIS DEPARTMENT OF TRANSPORTATION</b>	<b>TRAFFIC CONTROL AND PROTECTION AT TURN BAYS (TO REMAIN OPEN TO TRAFFIC)</b>			F.A.U. R.T.E.	SECTION	COUNTY	TOTAL SHEETS	SHEET NO.
pw\1\084EBIDINTEG.illinois.gov\PIWIDOT\Documents\IDOT Offices\District 1\Projects\DI1131\REVISED\Design\A HOUSEH 11-07-95	REVISED - A. HOUSEH 11-07-95	REVISED - A. SCHUETZE 07-01-13	REVISED - A. SCHUETZE 07-01-13		3545	2018-142-BR-1	DUPAGE	15	13			
Default	PLOT SCALE = 100.0000' / in.	REVISED - A. HOUSEH 10-12-96	REVISED - A. SCHUETZE 09-15-16		<b>TC-14</b>			<b>CONTRACT NO. 62H80</b>				
	PLOT DATE = 2/4/2019	REVISED - T. RAMMACHER 01-06-00	REVISED -		ILLINOIS FED. AID PROJECT							
				SCALE: NONE	SHEET 1	OF 1 SHEETS	STA.	TO STA.				

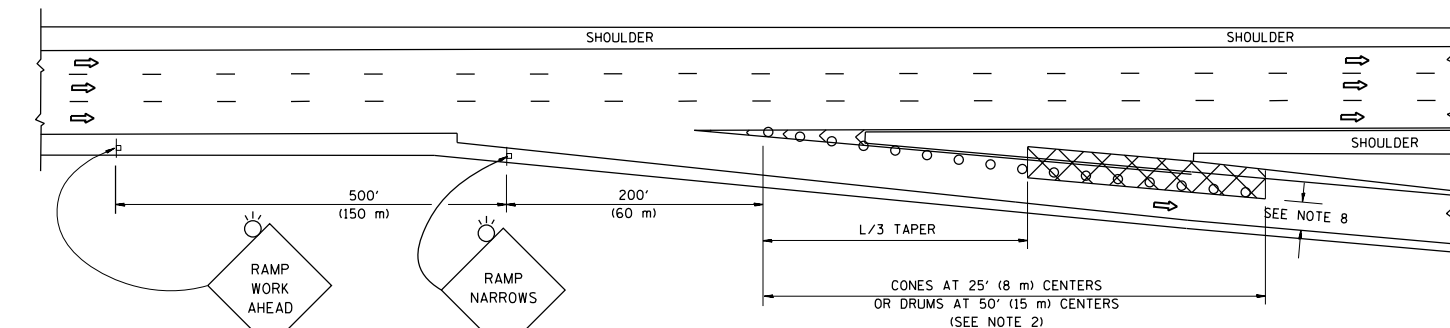
PARTIAL RAMP CLOSURE DETAILS



TYPICAL ENTRANCE RAMP



TYPICAL EXIT RAMP



TYPICAL EXIT RAMP

SYMBOLS

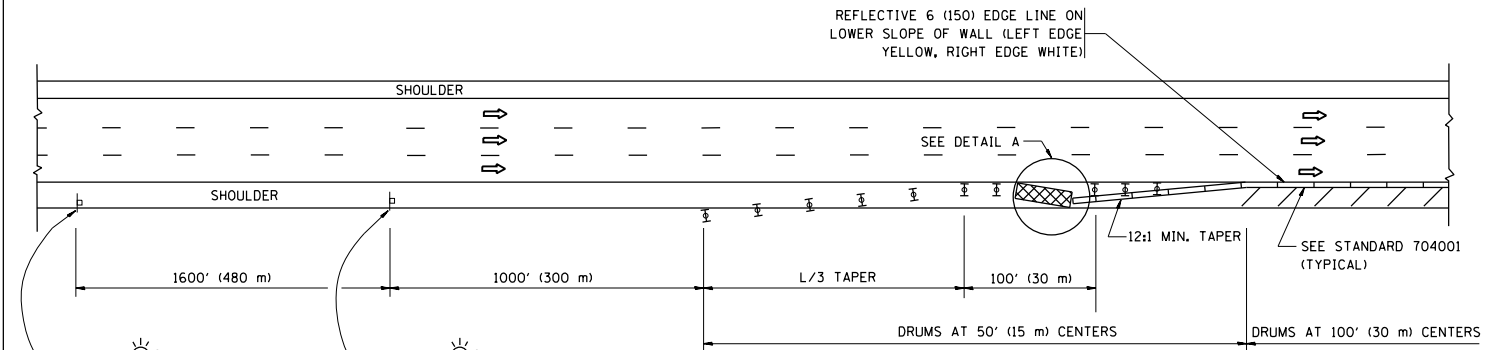
- ACTIVE WORK AREA
- SIGN ON PORTABLE OR PERMANENT SUPPORT
- FLAGGER WITH CONTROL SIGN
- TYPE II BARRICADE OR DRUM
- CONE, DRUM OR BARRICADE
- IMPACT ATTENUATOR OF TYPE AND TEST LEVEL SPECIFIED

GENERAL NOTES

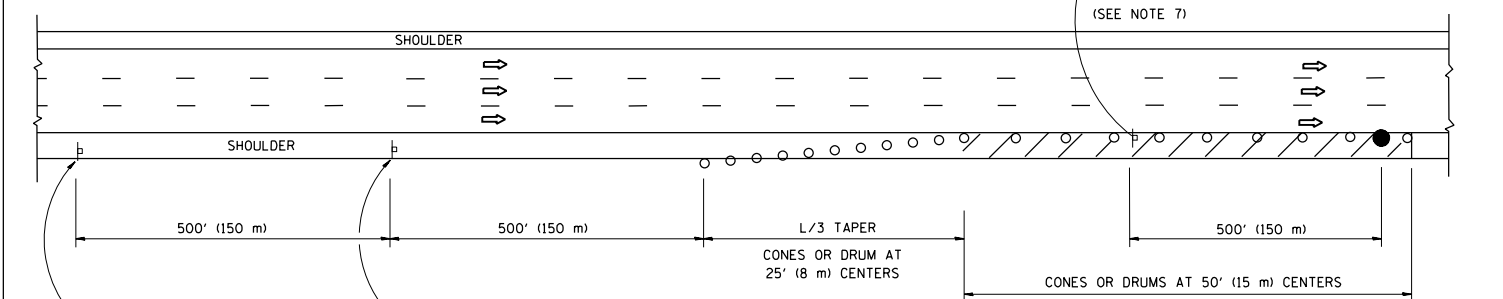
1. THE "L" DISTANCE EQUALS:  

SPEED LIMIT	FORMULAS
45 mph (80 km/h) OR GREATER:	METRIC ENGLISH L=0.65(W)(S) L=(W)(S)
W = WIDTH OF OFFSET IN FEET (METERS)	
S = NORMAL POSTED SPEED MPH (KM/H)	
2. TYPE II BARRICADES OR DRUMS ARE REQUIRED FOR ALL NIGHTTIME CLOSURES. TYPE II BARRICADES OR DRUMS WITH MONODIRECTIONAL STEADY BURN LIGHTS ARE REQUIRED FOR DELINEATING OBSTACLES, EXCAVATIONS, OR HAZARDS EXCEEDING 100 FT (30m) IN LENGTH AT NIGHT.
3. ALL SIGNS SHALL BE POST MOUNTED IF THE CLOSURE TIME EXCEEDS FOUR DAYS.
4. FLASHING LIGHTS SHALL BE USED DURING THE HOURS OF DARKNESS AND SHALL BE INSTALLED ABOVE THE FIRST TWO SETS OF SIGNS.

SHOULDER CLOSURE DETAILS

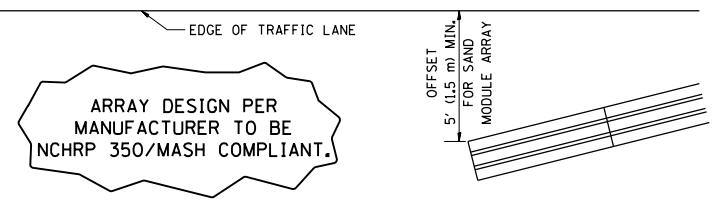


PERMANENT SHOULDER CLOSURE



DAYTIME SHOULDER CLOSURE

THIS DETAIL IS USED WHERE:  
 1. VEHICLES, EQUIPMENT, WORKERS OR THEIR ACTIVITIES ENCRUCH IN AN AREA CLOSER THAN 15' (4.5 m) TO THE EDGE OF PAVEMENT FOR A PERIOD IN EXCESS OF 15 MINUTES.

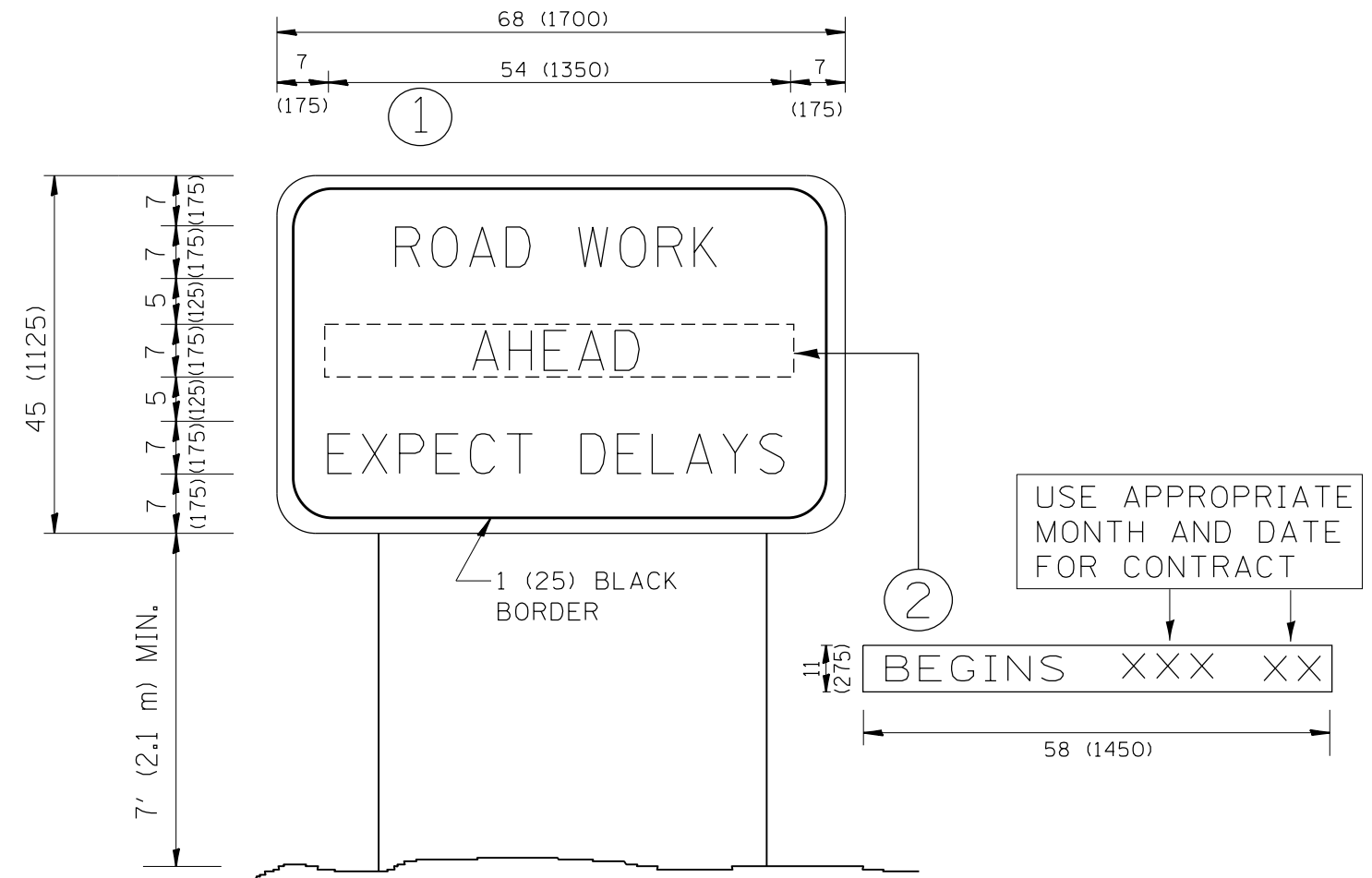


DETAIL "A"  
 IMPACT ATTENUATOR, TEMPORARY  
 (SEE NOTE 5)

5. THE IMPACT ATTENUATOR, TEMPORARY IS NOT REQUIRED WHEN THE TEMPORARY CONCRETE BARRIER WALL IS PROTECTED BY OR IS TIED INTO THE EXISTING GUARDRAIL. IF OFFSET IS LESS THAN 5 FEET USE NARROW USE TYPE DEVICE TO MEET NCHRP350/MASH.
6. AUTHORIZATION FROM THE DISTRICT'S BUREAU OF TRAFFIC IS REQUIRED FOR ALL FREEWAY CLOSURES.
7. THE FLAGGER AND FLAGGER SIGN ARE REQUIRED AT THE ABOVE WORK SITES WHEN:
  - a. FOUR OR MORE WORK VEHICLES ENTER THE TRAFFIC LANES IN A ONE HOUR PERIOD.
  - b. THE WORK AVTIVITY REQUIRES FREQUENT ENCRUCHMENT INTO THE LANE OPEN TO TRAFFIC.
 THE FLAGGER SHALL BE STATIONED APPROXIMATELY 100' (30 m) TO 200' (60 m) IN ADVANCE OF THE WORKERS.
8. 12' MIN. WIDTH TANGENT SECTION  
 16' MIN. WIDTH CURVE SECTION.

ALL DIMENSIONS ARE IN INCHES (MILLIMETERS) UNLESS OTHERWISE SHOWN.

FILE NAME =	USER NAME = allababdz	DESIGNED -	REVISED - S.P.B. 01-07	<b>STATE OF ILLINOIS DEPARTMENT OF TRANSPORTATION</b>	<b>TRAFFIC CONTROL DETAILS FOR FREEWAY SHOULDER CLOSURES AND PARTIAL RAMP CLOSURES</b>	F.A.U. RTE.	SECTION	COUNTY	TOTAL SHEETS	SHEET NO.
pw:\IL\084EBIDINTEG\Illinois.gov\PI\DOT\Documents\DOT Offices\District 1\Projects\DI1151\DRAMA\Design\04\WSS\dgn	PLLOT SCALE = 100.0000' / 1in.	CHECKED -	REVISED - S.P.B. 12-09			3545	2018-142-BR-1	DUPAGE	15	14
Default	PLLOT DATE = 2/4/2019	DATE - 11-96	REVISED - M.D. 06-13			<b>TC-17</b>		<b>CONTRACT NO. 62H80</b>		
			REVISED - M.D. 01-18			SCALE: NONE	SHEET 1 OF 1 SHEETS	STA. TO STA.	ILLINOIS FED. AID PROJECT	



**NOTES:**

1. USE BLACK LETTERING ON ORANGE BACKGROUND.
2. ERECT SIGNS IN ADVANCE OF THE LOCATION FOR THE "ROAD CONSTRUCTION AHEAD" SIGN AT LOCATIONS AS DIRECTED BY THE ENGINEER.
3. ERECT SIGN ① WITH INSTALLED PANEL ② ONE WEEK PRIOR TO THE START OF CONSTRUCTION.
4. REMOVE PANEL ② SOON AFTER THE START OF CONSTRUCTION.
5. SEE SPECIAL PROVISION FOR "TEMPORARY INFORMATION SIGNING" FOR ADDITIONAL INFORMATION.
6. ONE SIGN ASSEMBLY EQUALS 25.70 SQ. FT. (2.3 SQ. M.)
7. SHALL BE PAID FOR AS TEMPORARY INFORMATION SIGNING.

ALL DIMENSIONS ARE IN INCHES (MILLIMETERS) UNLESS OTHERWISE SHOWN.

FILE NAME =	USER NAME = allababdz	DESIGNED -	REVISED - R. MIRS 09-15-97	<b>STATE OF ILLINOIS DEPARTMENT OF TRANSPORTATION</b>	<b>ARTERIAL ROAD INFORMATION SIGN</b>		F.A.U. RTE.	SECTION	COUNTY	TOTAL SHEETS	SHEET NO.
p:\11\084EBIDINTEG.illinois.gov\PIWIDOT\Documents\DOT Offices\District 1\Projects\DI1151\DRAMA\Design\DistStd.dgn		CHECKED -	REVISED - R. MIRS 12-11-97		3545	2018-142-BR-1	DUPAGE	15	15		
PLOT SCALE = 100.0000' / 1in.		DATE -	REVISED - T. RAMMACHER 02-02-99		TC-22		CONTRACT NO. 62H80				
PLOT DATE = 2/4/2019		REVISED - C. JUCIUS 01-31-07	SCALE: NONE		SHEET NO. 1 OF 1 SHEETS	STA.	TO STA.	FED. ROAD DIST. NO. 1   ILLINOIS   FED. AID PROJECT			