

INDEX OF SHEETS

SHEET NO.	DESCRIPTION
1	COVER SHEET
2	INDEX OF SHEETS, STATE STANDARDS, AND GENERAL NOTES
3-4	SUMMARY OF QUANTITIES
5-7	TYPICAL SECTIONS
8-14	ROADWAY AND PAVEMENT MARKING PLAN
15	ADA RAMP DETAILS
16-17	DETECTOR LOOP REPLACEMENT PLAN
18	CULVERT REPAIR: ALIGNMENT, TIES AND BENCHMARK
19	CULVERT REPAIR: REMOVAL AND PROPOSED ROADWAY PLAN
20	CULVERT REPAIR TRAFFIC CONTROL, GENERAL NOTES AND TYPICAL SECTION
21-21A	CULVERT REPAIR: TRAFFIC CONTROL PLAN
22	CULVERT REPAIR: EROSION CONTROL AND LANDSCAPING PLAN
23	CULVERT REPAIR: PAVEMENT MARKING PLAN
24	CULVERT REPAIR: GENERAL PLAN AND DETAILS
25	CULVERT REPAIRS: BOX CULVERT STRUCTURE REMOVAL AND EXCAVATION
26	CULVERT REPAIR: BOX CULVERT REPAIR DETAILS
27	BD-08: DETAILS FOR FRAMES AND LIDS ADJUSTMENT WITH MILLING
28	BD-22: PAVEMENT PATCHING FOR HMA SURFACED PAVEMENT
29	BD-24: CURB OR CURB AND GUTTER REMOVAL AND REPLACEMENT
30	BD-32: BUTT JOINT AND HMA TAPER DETAILS
31	BD-33: HMA TAPER AT EDGE OF P.C.C. PAVEMENT
32	TC-8: ENTRANCE AND EXIT RAMP CLOSURE DETAILS
32A	TC-9: SINGLE AND MULTI-LANE WEAVE
33	TC-10: TRAFFIC CONTROL AND PROTECTION FOR SIDE ROADS, INTERSECTIONS, AND DRIVEWAYS
34	TC-11: TYPICAL APPLICATIONS RAISED REFLECTIVE PAVEMENT MARKERS (SNOW PLOW RESISTANT)
35-36	TC-12: MULTI-LANE FREEWAY PAVEMENT MARKINGS
37	TC-13: DISTRICT ONE TYPICAL PAVEMENT MARKINGS
38	TC-14: TRAFFIC CONTROL AND PROTECTION AT TURN BAYS (TO REMAIN OPEN TO TRAFFIC)
39	TC-16: SHORT TERM PAVEMENT MARKING LETTERS AND SYMBOLS
40	TC-17: TRAFFIC ONTROL FOR FREEWAY SHOULDER CLOSURES AND PARTIAL RAMP CLOSURES
41	TC-22: ARTERIAL ROAD INFORMATION SIGN
42	TS-07: DISTRICT 1 - DETECTOR LOOP INSTALLATION DETAILS FOR ROADWAY RESURFACING

HIGHWAY STANDARDS

STANDARD NO.	DESCRIPTION
000001-07	STANDARD SYMBOLS, ABBREVIATIONS AND PATTERNS
424001-11	PERPENDICULAR CURB RAMPS FOR SIDEWALKS
424006-04	DIAGONAL CURB RAMPS FOR SIDEWALKS
424011-04	CORNER PARALLEL CURB RAMPS FOR SIDEWALKS
424021-05	DEPRESSED CORNER FOR SIDEWALKS
424031-02	MEDIAN PEDESTRIAN CROSSINGS
442201-03	CLASS C AND D PATCHES
602011-02	CATCH BASIN TYPE C
604001-04	FRAME AND LIDS TYPE 1
604091-03	FRAME AND GRATE TYPE 24
606001-07	CONCRETE CURB TYPE B AND COMBINATION CONCRETE CURB AND GUTTER
635001-02	DELINEATORS
642001-02	SHOULDER RUMBLE STRIPS, 16"
701101-05	OFF-ROAD OPERATIONS, MULTILANE, 15' (4.5 m) TO 24" (600 MM) FROM PAVEMENT EDGE
701106-02	OFF-ROAD OPERATIONS, MULTILANE, MORE THAN 15' (4.5 m) AWAY
701400-09	APPROACH TO LANE CLOSURE, FREEWAY/EXPRESSWAY
701401-12	LANE CLOSURE, FREEWAY/EXPRESSWAY
701411-09	LANE CLOSURE, MULTI LANE ENTRANCE OR EXIT RAMP, 45 MPH OR MORE
701421-08	LANE CLOSURE, MULTILANE, DAY OPERATIONS ONLY, FOR SPEEDS ≥ 45 MPH TO 55 MPH
701428-01	TRAFFIC CONTROL SETUP AND REMOVAL FREEWAY/EXPRESSWAY
701446-09	TWO LANE CLOSURE, FREEWAY/EXPRESSWAY
701601-09	URBAN LANE CLOSURE, MULTILANE, 1W OR 2W WITH NONTRAVERSABLE MEDIAN
701701-10	URBAN LANE CLOSURE, MULTILANE INTERSECTION
701801-06	SIDEWALK CORNER OR CROSSWALK CLOSURE
701901-08	TRAFFIC CONTROL DEVICES
704001-08	TEMPORARY CONCRETE BARRIER
725001-01	OBJECT AND TERMINAL MARKERS
780001-05	TYPICAL PAVEMENT MARKINGS

782006	GUARDRAIL AND BARRIER WALL REFLECTOR MOUNTING DETAILS
720011-01	METAL POSTS FOR SIGNS, MARKERS & DELINEATORS

GENERAL NOTES

- BEFORE STARTING ANY EXCAVATION, THE CONTRACTOR SHALL CALL "J.U.L.I.E." AT (800) 892-0123 OR 811 FOR FIELD LOCATIONS OF BURIED ELECTRIC, TELEPHONE AND GAS UTILITIES. (48 HOUR NOTIFICATION IS REQUIRED)
- THE CONTRACTOR SHALL COORDINATE CONSTRUCTION ACTIVITIES WITH UTILITY COMPANIES, AND THE CITY OF HIGHLAND PARK.
- THE CONTRACTOR WILL NOT BE ALLOWED TO SET UP A YARD OR FIELD OFFICE ON STATE PROPERTY WITHOUT WRITTEN PERMISSION FROM THE DEPARTMENT.
- ANY PAVEMENT MARKINGS AND RAISED REFLECTIVE PAVEMENT MARKERS OBLITERATED BY MILLING AND RESURFACING OPERATIONS ON SIDE STREETS AND ENTRANCES SHALL BE REPLACED AND PAID FOR IN KIND.
- ALL DAMAGE TO EXISTING PAVEMENT MARKINGS OR RAISED REFLECTIVE PAVEMENT MARKERS OUTSIDE THE REMOVAL LINE SHOWN ON THE PLANS SHALL BE REPLACED AT NO ADDITIONAL COST TO THE DEPARTMENT.
- BEFORE BEGINNING ANY WORK, THE CONTRACTOR SHALL RETAIN AND RECORD FOR FUTURE REFERENCE, ALL EXISTING PAVEMENT MARKING LINES (AND RAISED REFLECTIVE PAVEMENT MARKERS) IN ORDER THAT THESE LOCATIONS CAN BE RE-ESTABLISHED FOR STRIPING. EXACT LOCATIONS OF ALL PAVEMENT MARKINGS SHALL BE AS DIRECTED BY THE RESIDENT ENGINEER.
- ALL PAVEMENT PATCHING LOCATIONS WILL BE DETERMINED IN THE FIELD BY THE RESIDENT ENGINEER/TECHNICIAN.
- DRAINAGE ADJUSTMENT OR RECONSTRUCTION LOCATIONS WILL BE DETERMINED IN THE FIELD BY THE RESIDENT ENGINEER/TECHNICIAN.
- IT SHALL BE THE CONTRACTOR'S RESPONSIBILITY TO VERIFY ALL DIMENSIONS AND CONDITIONS EXISTING IN THE FIELD PRIOR TO CONSTRUCTION AND ORDERING OF MATERIALS.
- FRAMES AND GRATES ADJUSTMENT OF PRIVATE UTILITIES WITHIN THE LIMITS OF THE IMPROVEMENTS SHALL BE DONE BY THEIR RESPECTIVE OWNERS AND ARE NOT PART OF THIS CONTRACT.
- FOR FRAMES AND LIDS ADJUSTMENT WITHOUT MILLING, REUSE EXISTING FRAME AND LID UNLESS OTHERWISE SPECIFIED IN THE PLANS.
- THE CONTRACTOR SHALL CONTACT DISTRICT ONE ARTERIAL TRAFFIC CONTROL SUPERVISOR, AT KALPANA.KANNAN-HOSADURGA@ILLINOIS.GOV, AND EXPRESSWAYS TRAFFIC CONTROL SUPERVISOR AT (847)705-4157, A MINIMUM OF 72 HOURS IN ADVANCE OF BEGINNING WORK.
- THE RESIDENT ENGINEER SHALL CONTACT WALTER CZARNY, ARTERIAL TRAFFIC FIELD ENGINEER, AT WALTER.CZARNY@ILLINOIS.GOV A MINIMUM OF TWO (2) WEEKS PRIOR TO THE PLACEMENT OF PERMANENT PAVEMENT MARKINGS.
- DO NOT SCALE PLANS FOR CONSTRUCTION DIMENSIONS.
- DOUBLE LANE MARKERS ARE TO BE USED AS SHOWN ON THE DISTRICT ONE DETAIL "TYPICAL APPLICATIONS - RAISED REFLECTIVE PAVEMENT MARKERS (SNOW-PLOW RESISTANT).
- WHEN THE MILLED PAVEMENT IS OPEN TO TRAFFIC THE MAXIMUM GRADE DIFFERENTIAL BETWEEN PASSES OF THE MILLING MACHINE SHALL NOT EXCEED 1/2 INCHES (40 mm) WHERE THE SPEED LIMIT IS 45 MPH (80 km/h) OR LESS AND 1 INCH (25 mm) WHERE THE SPEED LIMIT IS GREATER THAN 45 MPH (80 km/h). WITH WRITTEN APPROVAL OF THE ENGINEER, A MAXIMUM GRADE DIFFERENTIAL OF 3 INCHES (75 mm) MAY BE ALLOWED IF THE EDGE OF THE MILLING IS SLOPED A MINIMUM 1:3 .
- BUTT JOINTS WILL BE INSTALLED AT THE ENDS OF ALL RESURFACING (WHERE RESURFACING MEETS EXISTING PAVEMENT) ACCORDING TO THE "BUTT JOINT AND HOT-MIX ASPHALT TAPER DETAILS" SHEET INCLUDED IN THE PLANS, UNLESS OTHERWISE SPECIFIED.
- PAVEMENT MARKING TAPE, TYPE III SHALL BE USED FOR SHORT TERM PAVEMENT MARKINGS ON ALL FINAL SURFACES.
- LOCATION OF COMBINATION CONCRETE CURB AND GUTTER REMOVAL AND REPLACEMENT (OR COMBINATION CURB AND GUTTER (THE TYPE SPECIFIED ON THE PLANS)), WILL BE DETERMINED IN THE FIELD BY THE RESIDENT ENGINEER/TECHNICIAN.
- THE CONTRACTOR SHALL USE CARE IN GRADING OR EXCAVATING NEAR ANY AND ALL EXISTING ITEMS THAT WILL NOT BE REMOVED INCLUDING PREVIOUSLY SEEDED AREAS. ANY DAMAGE DONE TO EXISTING ITEMS BY THE CONTRACTOR SHALL BE REPAIRED AT THE CONTRACTOR'S OWN EXPENSE TO THE SATISFACTION OF THE ENGINEER.
- THE CONTRACTOR SHALL MAINTAIN PEDESTRIAN ACCESS AT ALL TIMES DURING CONSTRUCTION.
- THE CONTRACTOR SHALL BE RESPONSIBLE FOR THE REPLACEMENT OF ANY DETECTOR LOOPS DAMAGED DURING CONSTRUCTION.



△ REV. 4-15-2019

MODEL: Default
 FILE: M:\MSR_PlanRoom\1911\19110000\Documents\DOT_Offices\District 1\Projects\104119\CADD\Design\104119_sht-genernote.dgn

USER NAME = aquinoma	DESIGNED -	REVISED -	<p style="text-align: center;">STATE OF ILLINOIS DEPARTMENT OF TRANSPORTATION</p>	<p style="text-align: center;">US 41 (PARK AVENUE WEST TO CHANTILLY BLVD.) INDEX OF SHEETS STATE STANDARDS AND GENERAL NOTES</p>	F.A.P. RTE.	SECTION	COUNTY	TOTAL SHEETS	SHEET NO.	
	DRAWN -	REVISED -			346	2018-111-R5&SW	LAKE	42	2	
PLOT SCALE = 100.0000' / in.	CHECKED -	REVISED -			CONTRACT NO. 62h36					
PLOT DATE = 3/19/2019	DATE -	REVISED -			SCALE:	SHEET	OF	SHEETS	STA.	TO
					ILLINOIS FED. AID PROJECT					

URBAN

URBAN

SUMMARY OF QUANTITIES			CONSTRUCTION TYPE CODE				
CODE NO	ITEM	UNIT	TOTAL QUANTITIES	005 80% FED 20% STATE ROADWAY			
20200100	EARTH EXCAVATION	CU YD	29.5	29.5			
20201200	REMOVAL AND DISPOSAL OF UNSUITABLE MATERIAL	CU YD	16	16			
20700220	POROUS GRANULAR EMBANKMENT	CU YD	13	13			
21101615	TOPSOIL FURNISH AND PLACE, 4"	SO YD	79	79			
25000210	SEEDING, CLASS 2A	ACRE	0.2	0.2			
25000400	NITROGEN FERTILIZER NUTRIENT	POUND	1.5	1.5			
25000500	PHOSPHORUS FERTILIZER NUTRIENT	POUND	1.5	1.5			
25000600	POTASSIUM FERTILIZER NUTRIENT	POUND	1.5	1.5			
25100630	EROSION CONTROL BLANKET	SO YD	24	24			
25200110	SODDING, SALT TOLERANT	SO YD	55	55			
28000250	TEMPORARY EROSION CONTROL SEEDING	POUND	2	2			
28000400	PERIMETER EROSION BARRIER	FOOT	66	66			
30300112	AGGREGATE SUBGRADE IMPROVEMENT 12"	SQ YD	21	21			
40600290	BITUMINOUS MATERIALS (TACK COAT)	POUND	90615	90615			
40600400	MIXTURE FOR CRACKS, JOINTS, AND FLANGEWAYS	TON	201	201			
40600827	POLYMERIZED LEVELING BINDER (MACHINE METHOD), IL-4, 75, N50	TON	5517	5517			
40600982	HOT-MIX ASPHALT SURFACE REMOVAL - BUTT JOINT	SO YD	489	489			

SUMMARY OF QUANTITIES			CONSTRUCTION TYPE CODE				
CODE NO	ITEM	UNIT	TOTAL QUANTITIES	005 80% FED 20% STATE ROADWAY			
40603340	HOT-MIX ASPHALT SURFACE COURSE, MIX "D", N70	TON	5861	5861			
42400200	PORTLAND CEMENT CONCRETE SIDEWALK 5 INCH	SO FT	120	120			
44000159	HOT-MIX ASPHALT SURFACE REMOVAL, 2 1/2"	SO YD	133741	133741			
44000600	SIDEWALK REMOVAL	SO FT	90	90			
44003100	MEDIAN REMOVAL	SO FT	32	32			
44004250	PAVED SHOULDER REMOVAL	SO YD	21	21			
44200976	CLASS B PATCHES, TYPE IV, 10 INCH	SO YD	832	832			
44201863	CLASS D PATCHES, TYPE II, 18 INCH	SO YD	1000	1000			
44201867	CLASS D PATCHES, TYPE III, 18 INCH	SO YD	1400	1400			
44201869	CLASS D PATCHES, TYPE IV, 18 INCH	SO YD	400	400			
44213000	PATCHING REINFORCEMENT	SO YD	832	832			
48102100	AGGREGATE WEDGE SHOULDER, TYPE B	TON	174	174			
44213200	SAW CUTS	FOOT	1632	1632			
48203037	HOT-MIX ASPHALT SHOULDERS, 10"	SO YD	21	21			
44213208	TIE BARS 1 1/4"	EACH	244	244			
50102400	CONCRETE REMOVAL	CU YD	2.7	2.7			
50200100	STRUCTURE EXCAVATION	CU YD	27	27			
50800205	REINFORCEMENT BARS, EPOXY COATED	POUND	980	980			
52200020	TEMPORARY SOIL RETENTION SYSTEM	SO FT	241	241			

REV. 4-15-2019

REV. - MS

FILE NAME =	USER NAME =	DESIGNED -	REVISED -
pw:\NLOB\EBID\INTEG\Illinois.gov\FWIDOT\Documents\DOO\Offices\District\NProjects\DI0419\CADD\Design\DI0419\	aguirom		
PLOT SCALE = 100,000' / 1"	CHECKED -	REVISED -	
PLOT DATE = 2/5/2019	DATE -	REVISED -	

STATE OF ILLINOIS
DEPARTMENT OF TRANSPORTATION

U.S. ROUTE 41 (PARK AVE. WEST TO CHANTILLY BLVD)
SUMMARY OF QUANTITIES

F.A.P. RTE.	SECTION	COUNTY	TOTAL SHEETS	SHEET NO.
346	2018-111-R5&SW	LAKE	42	3
CONTRACT NO. 62H36				

SCALE: SHEET NO. OF SHEETS STA. TO STA.

FED. ROAD DIST. NO. 1 ILLINOIS FED. AID PROJECT

URBAN

URBAN

SUMMARY OF QUANTITIES			TOTAL QUANTITIES	CONSTRUCTION TYPE CODE				
CODE NO	ITEM	UNIT		005 80% FED 20% STATE ROADWAY				
54002020	EXPANSION BOLTS 3/4 INCH	EACH	15	15				
54003000	CONCRETE BOX CULVERTS	CU YD	3.9	3.9				
59100100	GEOCOMPOSITE WALL DRAIN	CU YD	3.0	3.0				
60300105	FRAMES AND GRATES TO BE ADJUSTED	EACH	20	20				
63000053	WEAK POST GUARDRAIL ATTACHED TO CULVERT CASE IV	FOOT	31.25	31.25				
63100045	TRAFFIC BARRIER TERMINAL, TYPE 2	EACH	1	1				
63200310	GUARDRAIL REMOVAL	FOOT	37.5	37.5				
63500105	DELINEATORS	EACH	135	135				
64200116	SHOULDER RUMBLE STRIPS, 16 INCH	FOOT	21459	21459				
64300260	IMPACT ATTENUATORS (FULLY REDIRECTIVE, NARROW), TEST LEVEL 3	EACH	1	1				
* 66900200	NON-SPECIAL WASTE DISPOSAL	CU YD	29.5	29.5				
* 66900530	SOIL DISPOSAL ANALYSIS	EACH	1	1				
* 66901001	REGULATED SUBSTANCES PRE-CONSTRUCTION PLAN	LSUM	1	1				
* 66901002	ON-SITE MONITORING OF REGULATED SUBSTANCES	CAL DA	1	1				

SUMMARY OF QUANTITIES			TOTAL QUANTITIES	CONSTRUCTION TYPE CODE				
CODE NO	ITEM	UNIT		005 80% FED 20% STATE ROADWAY				
* 66901003	REGULATED SUBSTANCES FINAL CONSTRUCTION REPORT	LSUM	1	1				
67000400	ENGINEER'S FIELD OFFICE, TYPE A	CAL MO	12	12				
67100100	MOBILIZATION	L SUM	1	1				
70200100	NIGHTTIME WORK ZONE LIGHTING	L SUM	1	1				
70300100	SHORT TERM PAVEMENT MARKING	FOOT	22728	22728				
70300150	SHORT TERM PAVEMENT MARKING REMOVAL	SO FT	5682	5682				
70300210	TEMPORARY PAVEMENT MARKING LETTERS AND SYMBOLS	SO FT	233	233				
70300220	TEMPORARY PAVEMENT MARKING - LINE 4"	FOOT	65072	65072				
70300240	TEMPORARY PAVEMENT MARKING - LINE 6"	FOOT	1726	1726				
70300250	TEMPORARY PAVEMENT MARKING - LINE 8"	FOOT	4202	4202				
70300260	TEMPORARY PAVEMENT MARKING - LINE 12"	FOOT	864	864				
70300280	TEMPORARY PAVEMENT MARKING - LINE 24"	FOOT	175	175				
70300520	PAVEMENT MARKING TAPE, TYPE III 4"	FOOT	1908	1908				
70300904	PAVEMENT MARKING TAPE, TYPE IV 4"	FOOT	2238	2238				
70400100	TEMPORARY CONCRETE BARRIER	FOOT	150	150				
70300530	PAVEMENT MARKING TAPE, TYPE III 5"	FOOT	20460	20460				
	* SPECIALTY ITEMS							



REV. 4-15-2019

REV. - MS

FILE NAME =	USER NAME = <i>aguthoma</i>	DESIGNED -	REVISED -
<i>p:\N\LOB\EBID\EG\Illinois.gov\FWIDOT\Documents\DOC\</i>	<i>Offices\District\N\Projects\DI0419\CADD\td\Design\DI0419</i>	-	REVISED -
	PLOT SCALE = 100,000' / 1" =	CHECKED -	REVISED -
	PLOT DATE = 2/5/2019	DATE -	REVISED -

STATE OF ILLINOIS
DEPARTMENT OF TRANSPORTATION

U.S. ROUTE 41 (PARK AVE. WEST TO CHANTILLY BLVD)
SUMMARY OF QUANTITIES

SCALE: SHEET NO. OF SHEETS STA. TO STA.

F.A.P. RTE.	SECTION	COUNTY	TOTAL SHEETS	SHEET NO.
346	2018-111-R5&SW	LAKE	42	4
			CONTRACT NO. 62H36	
FED. ROAD DIST. NO. 1 ILLINOIS FED. AID PROJECT				

URBAN

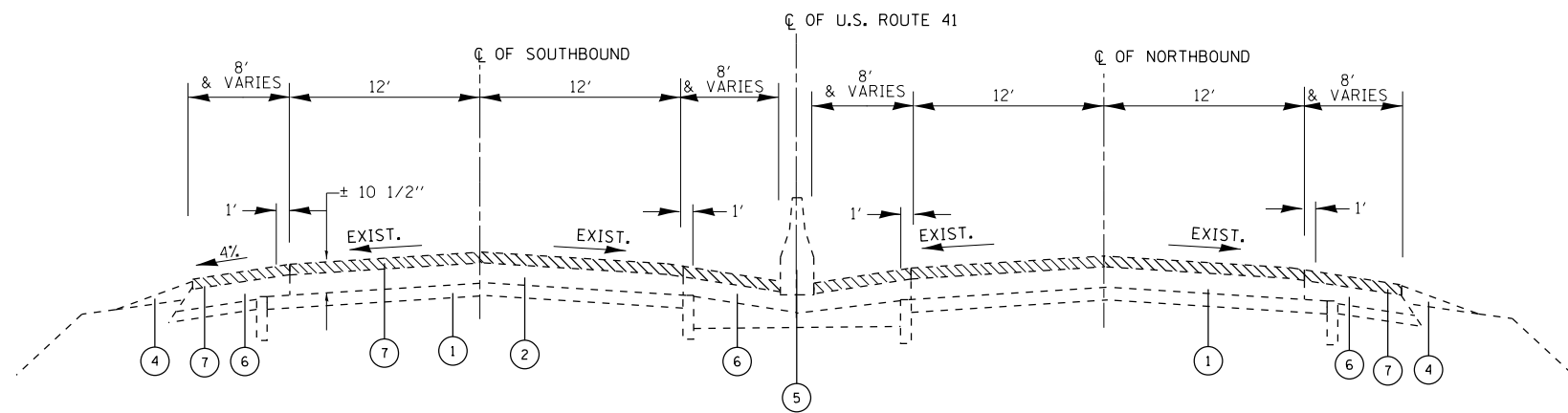
URBAN

SUMMARY OF QUANTITIES			TOTAL QUANTITIES	CONSTRUCTION TYPE CODE				
CODE NO	ITEM	UNIT		005 80% FED 20% STATE ROADWAY				
* 78000100	THERMOPLASTIC PAVEMENT MARKING - LETTERS AND SYMBOLS	SO FT	233	233				
* 78004354	PREFORMED PLASTIC PAVEMENT MARKING TYPE D, INLAID 4"	FOOT	3624	3624				
* 78000200	THERMOPLASTIC PAVEMENT MARKING - LINE 4"	FOOT	43600	43600				
* 78004355	PREFORMED PLASTIC PAVEMENT MARKING TYPE D, INLAID 5"	FOOT	20710	20710				
* 78000400	THERMOPLASTIC PAVEMENT MARKING - LINE 6"	FOOT	1726	1726				
* 78004358	PREFORMED PLASTIC PAVEMENT MARKING TYPE D, INLAID 8"	FOOT	1097	1097				
* 78000500	THERMOPLASTIC PAVEMENT MARKING - LINE 8"	FOOT	4202	4202				
* 78004356	PREFORMED PLASTIC PAVEMENT MARKING TYPE D, INLAID 6"	FOOT	600	600				
* 78000600	THERMOPLASTIC PAVEMENT MARKING - LINE 12"	FOOT	864	864				
* 78000650	THERMOPLASTIC PAVEMENT MARKING - LINE 24"	FOOT	175	175				
* 78100100	RAISED REFLECTIVE PAVEMENT MARKER	EACH	550	550				
78100300	REPLACEMENT REFLECTOR	EACH	14	14				
78200005	GUARDRAIL REFLECTORS, TYPE A	EACH	4	4				
78300200	RAISED REFLECTIVE PAVEMENT MARKER REMOVAL	EACH	564	564				
78200011	BARRIER WALL REFLECTORS, TYPE C	EACH	8	8				
* 88600600	DETECTOR LOOP REPLACEMENT	FOOT	493	493				
X0320050	CONSTRUCTION LAYOUT (SPECIAL)	L SUM	1	1				
X0327980	PAVEMENT MARKING REMOVAL - WATER BLASTING	SQ FT	450	450				
* X0900064	MEMBRANE WATERPROOFING SYSTEM FOR BURIED STRUCTURES	SO YD	3	3				

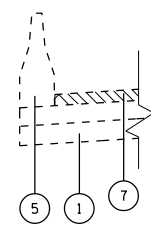
SUMMARY OF QUANTITIES			TOTAL QUANTITIES	CONSTRUCTION TYPE CODE				
CODE NO	ITEM	UNIT		005 80% FED 20% STATE ROADWAY				
X2020110	GRADING AND SHAPING SHOULDERS	UNIT	215	215				
X4060004	POLYMERIZED HOT-MIX ASPHALT SURFACE COURSE, STONE MATRIX ASPHALT, 9.5, N80	TON	7246	7246				
X6030205	FRAMES AND GRATES TO BE ADJUSTED (SPECIAL)	EACH	15	15				
X7010216	TRAFFIC CONTROL AND PROTECTION, (SPECIAL)	L SUM	1	1				
X7011015	TRAFFIC CONTROL AND PROTECTION (EXPRESSWAYS)	L SUM	1	1				
X7030005	TEMPORARY PAVEMENT MARKING REMOVAL	SO FT	27820	27820				
Z0004562	COMBINATION CONCRETE CURB AND GUTTER REMOVAL AND REPLACEMENT	FOOT	300	300				
Z0013798	CONSTRUCTION LAYOUT	L SUM	1	1				
Z0018500	DRAINAGE STRUCTURES TO BE CLEANED	EACH	5	5				
Z0018600	DRAINAGE STRUCTURES TO BE RECONSTRUCTED	EACH	3	3				
Z0030850	TEMPORARY INFORMATION SIGNING	SQ FT	52	52				
Z0033700	LONGITUDINAL JOINT SEALANT	FOOT	31067	31067				
Z0055500	RUMBLE STRIP	SQ FT	7488	7488				
<input type="checkbox"/> NON-PART. 100% STATE <input checked="" type="checkbox"/> SPECIALTY ITEMS								

REV. 4-15-2019

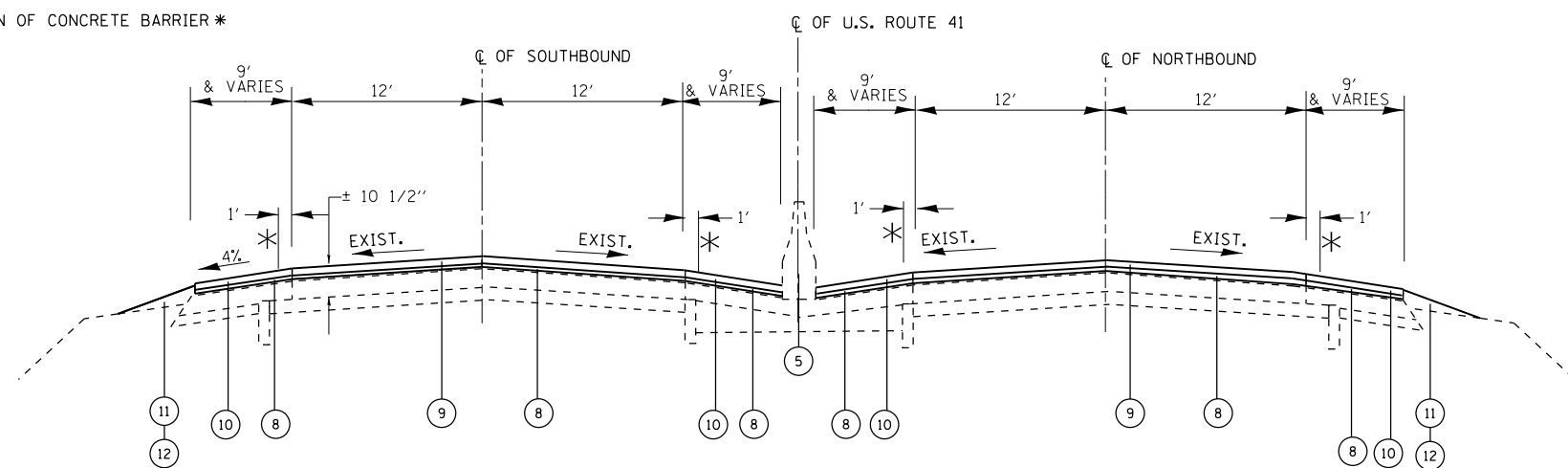
REV. - MS



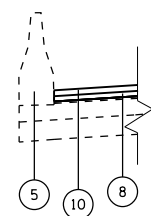
EXISTING TYPICAL SECTION
STA. 10+45.83 TO STA. 42+67.47



SEE PLANS FOR EXACT LOCATION OF CONCRETE BARRIER *



PROPOSED TYPICAL SECTION
STA. 10+45.83 TO STA. 42+67.47



SEE PLANS FOR EXACT LOCATION OF CONCRETE BARRIER *

LEGEND

- ① EXISTING P.C. CONCRETE PAVEMENT, 10"
- ② EXISTING HMA CONCRETE SURFACE, ± 10 1/2"
- ③ EXISTING COMBINATION CONCRETE CURB AND GUTTER
- ④ EXISTING GRAVEL OR CRUSHED STONE SHOULDER
- ⑤ EXISTING CONCRETE BARRIER AND CONCRETE BARRIER, SPECIAL
- ⑥ EXISTING HMA SHOULDER, 10"
- ⑦ PROPOSED HMA SURFACE REMOVAL, 2 1/2"
- ⑧ PROPOSED POLYMERIZED LEVELING BINDER, (MM), IL 4.75, N50, 3/4"
- ⑨ PROPOSED POLYMERIZED HMA SURFACE COURSE STONE MATRIX ASPHALT, 9.5, N80, 1 3/4"
- ⑩ PROPOSED HMA SURFACE COURSE, MIX "D" N70, 1 3/4"
- ⑪ PROPOSED AGGREGATE WEDGE SHOULDERS, TYPE B
- ⑫ PROPOSED GRADING AND SHAPING SHOULDERS
- ⑬ PROPOSED DELINEATORS

- NOTE 1: THE UNIT WEIGHT USED TO CALCULATE ALL HMA SURFACE MIXTURE QUANTITIES IS 112 LBS/SQYD/IN
- NOTE 2: THE "AC TYPE" FOR POLYMERIZED HMA MIXES SHALL BE "SBS/SBR PG 76-22" AND FOR NON-POLYMERIZED HMA THE "AC TYPE" SHALL BE "PG 64-22" UNLESS MODIFIED BY DISTRICT ONE SPECIAL PROVISIONS.
- NOTE 3: FOR USE OF RECYCLED MATERIALS SEE SPECIAL PROVISIONS.
- NOTE 4: QUALITY MANAGEMENT PROGRAM (QMP) IDENTIFIES THE PARTICULAR QUALITY CONTROL SPECIFICATION THAT APPLIES TO THE HMA MIXTURE.
- NOTE 4: THE CONSTRUCTOR SHALL MILL THE ROADWAY FIRST, THEN DO PAVEMENT PATCHING PER BD-22 DETAIL.
- NOTE 5: THE LONGITUDINAL JOINT SEALANT SHALL BE PLACED OVER THE POLYMERIZED LEVELING BINDER WHERE THE SURFACE JOINT WILL BE LOCATED.

* RUMBLE STRIPS (16") WIDE
PER STANDARD 642001

REV. 4-15-2019

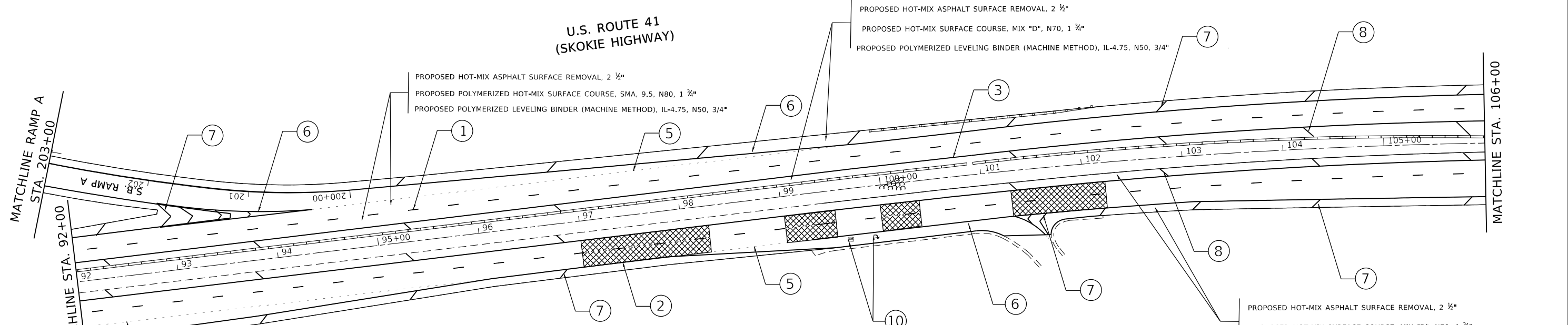
MIXTURE REQUIREMENTS		QUALITY MANAGEMENT PROGRAM (QMP)
MIXTURE USES	VOIDS @ Ndes	
PAVEMENT & SHOULDER RESURFACING		
HOT-MIX ASPHALT SURFACE COURSE, MIX "D", N70 (IL 9.5 mm)	4% AT 70 GYR.	QC/QA
POLYMERIZED HMA SURFACE COURSE, SMA, 9.5, N80	3.5% AT 80 GYR.	QCP
POLYMERIZED LEVELING BINDER (MACHINE METHOD), IL-4.75, N50	3.5% AT 50 GYR.	QCP
HMA SHOULDER 10"		
HOT-MIX ASPHALT SURFACE COURSE, MIX "D", N70 (IL 9.5 mm), 2"	4% AT 70 GYR.	QC/QA
HMA BINDER COURSE, IL-19.0, N70, 8"	4.0% AT 70 GYR.	QC/QA
PATCHING		
CLASS D PATCHES (HMA BINDER, IL-19.0 mm)	4% AT 70 GYR.	
QMP Designation: Quality Control/Quality Assurance (QC/QA); Quality Control for Performance (QCP); PAY FOR PERFORMANCE (PFP)		

MODEL: Default
FILE: hma10c_pavement.dwg
PROJECT: 104119_CADDData\Design\104119_sht-ty-sec.dgn

USER NAME = aquinoma	DESIGNED -	REVISED - 4/12/2019 MAA
PLOT SCALE = 100,0000' / in.	DRAWN -	REVISED -
PLOT DATE = 4/12/2019	CHECKED -	REVISED -
	DATE -	REVISED -

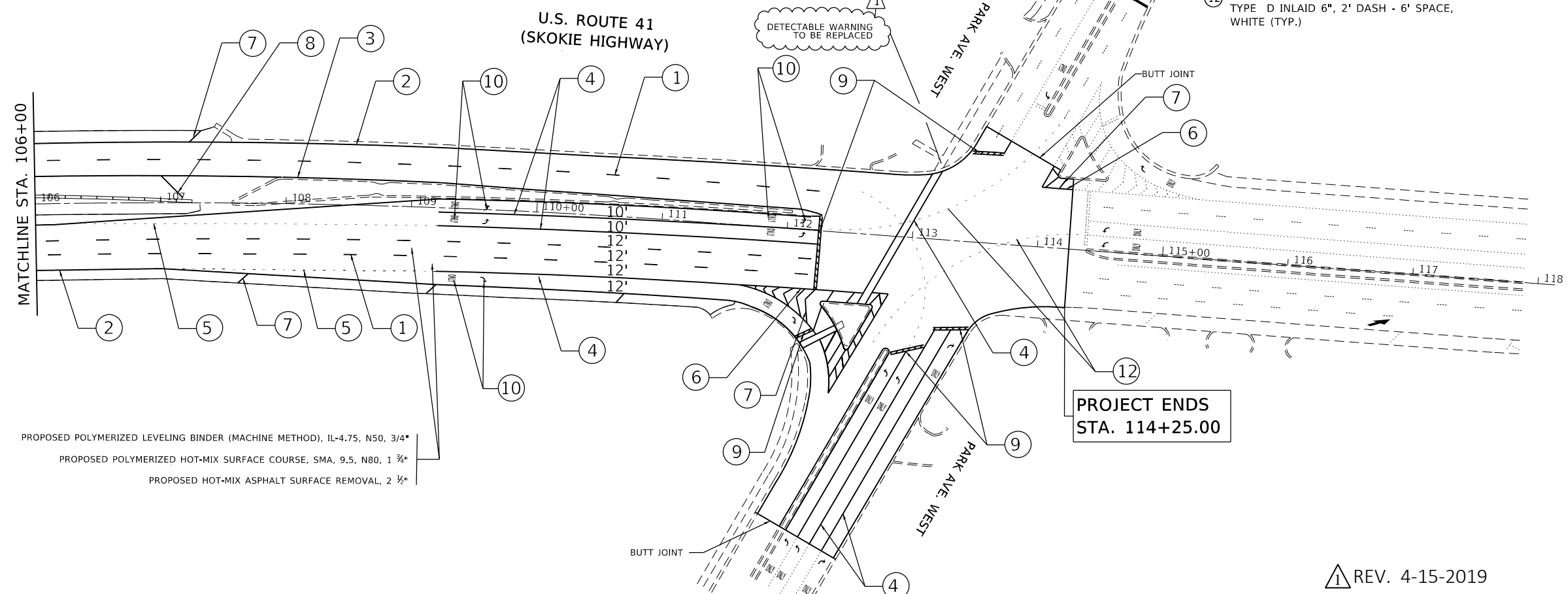
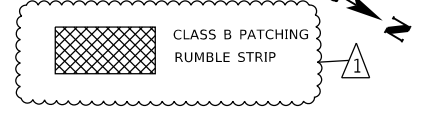
STATE OF ILLINOIS
DEPARTMENT OF TRANSPORTATION

TYPICAL SECTIONS		F.A.P. RTE.	SECTION	COUNTY	TOTAL SHEETS	SHEET NO.
US 41 (PARK AVE. WEST TO CHANTILLY BLVD.)		346	2018-111-R5&SW	LAKE	42	6
SCALE: SHEET OF SHEETS STA. TO STA.		CONTRACT NO. 62H36				
		ILLINOIS FED. AID PROJECT				



PROPOSED PAVEMENT MARKINGS LEGEND

- ① PREFORMED PLASTIC PAVEMENT MARKING
TYPE D INLAID 5", 10' DASH - 30' SPACE,
WHITE (TYP.)
- ② THERMOPLASTIC PVMT. MARKING 4", SOLID EDGE LINE, WHITE (TYP.)
- ③ THERMOPLASTIC PVMT. MARKING 4", SOLID EDGE LINE, YELLOW (TYP.)
- ④ THERMOPLASTIC PVMT. MARKING 6", LINE, WHITE (TYP.)
- ⑤ PREFORMED PLASTIC PAVEMENT MARKING
TYPE D, INLAID 4", 2' DASH - 6' SPACE,
WHITE (TYP.)
- ⑥ THERMOPLASTIC PVMT. MARKING 8", LINE, WHITE (TYP.)
- ⑦ THERMOPLASTIC PVMT. MARKING 12", CHEVRONS, WHITE (TYP.)
- SEE DETAIL TC-12 FOR SPACING
- ⑧ THERMOPLASTIC PVMT. MARKING 12", DIAGONALS, YELLOW
(TYP.) - SEE DETAIL TC-24 FOR SPACING
- ⑨ THERMOPLASTIC PVMT. MARKING 24", STOP BAR, WHITE (TYP.)
- ⑩ THERMOPLASTIC PVMT. MARKING LETTERS AND SYMBOLS
- ⑪ PREFORMED PLASTIC PAVEMENT MARKING
TYPE D, INLAID 8", 3' DASH - 9' SPACE,
WHITE (TYP.)
- ⑫ PREFORMED PLASTIC PAVEMENT MARKING
TYPE D INLAID 6", 2' DASH - 6' SPACE,
WHITE (TYP.)



**PROJECT ENDS
STA. 114+25.00**

- NOTES:
- LIMIT OF RESURFACING ON THE SIDE-STREETS THROUGHOUT THE PROJECT SHALL BE TO THE RADIUS RETURN, UNLESS OTHERWISE SHOWN ON THE PLANS, OR AS DIRECTED BY THE RESIDENT ENGINEER / TECHNICIAN.
 - ALL FINAL PAVEMENT MARKINGS SHALL BE THERMOPLASTIC PAVEMENT MARKINGS (OF THE EXTRUDED TYPE).
 - ALL PAVEMENT MARKINGS SHALL BE PLACED IN ACCORDANCE WITH TC-13 "DISTRICT ONE TYPICAL PAVEMENT MARKINGS" STANDARD DETAIL.
 - ALL RAISED REFLECTIVE PAVEMENT MARKERS SHALL BE PLACED IN ACCORDANCE WITH TC-11 "TYPICAL APPLICATIONS RAISED REFLECTIVE PAVEMENT MARKERS (SNOW-PLOW RESISTANT)" STANDARD DETAIL.
 - FOR PROPOSED CURB RAMP IMPROVEMENTS, SEE "ADA RAMP DETAILS".

REV. 4-15-2019

MODEL: Default
 FILE: \\nrcs\pub\baroom\da\illinois\gov\RUIDOT\Documents\DOT-Office\Office\Drawings\1\Projects\1104119\CADDData\Design\1104119-sh-c-bar.dgn

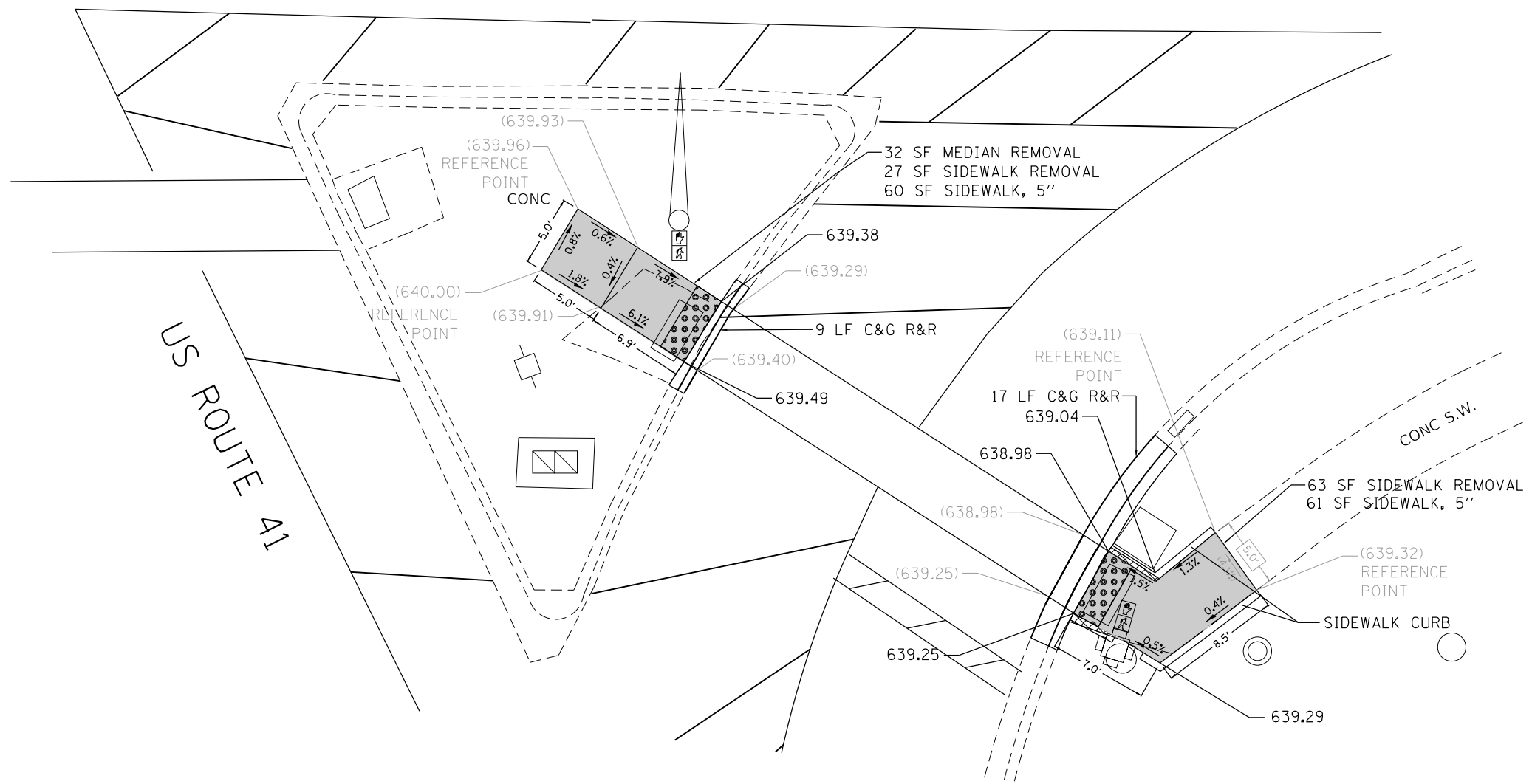
USER NAME = aquinoma	DESIGNED -	REVISED - 04/12/2019 MAA
	DRAWN -	REVISED -
PLOT SCALE = 100,0000 ' / in.	CHECKED -	REVISED -
PLOT DATE = 4/12/2019	DATE -	REVISED -

**STATE OF ILLINOIS
DEPARTMENT OF TRANSPORTATION**

ROADWAY PLAN			
U.S. ROUTE 41 (SKOKIE HWY.) (W. PARK AVE. - CHANTILLY BLVD.)			
SCALE: 1" = 50'	SHEET OF SHEETS	STA. 92+00 TO STA. 114+25.00	

F.A.P. RTE.	SECTION	COUNTY	TOTAL SHEETS	SHEET NO.
346	2018-111-R5&SW	LAKE	42	14
CONTRACT NO. 62H36				
ILLINOIS FED. AID PROJECT				

WEST PARK AVENUE



US ROUTE 41

LEGEND

- xx.xx' EXISTING LENGTH
- ===== PROPOSED SIDE CURB
- () EXISTING ELEVATION/SLOPE
- PROPOSED SIDEWALK
- ▣ DETECTABLE WARNINGS
- ▨ SIDEWALK REMOVAL REPLACE W/TOPSOIL & SOD

REFERENCE BENCHMARK ELEV 638.726
 BENCHMARK : "□" CUT ON TOP OF TRAFFIC CONTROL BOX
 LOCATION : ON SOUTH EAST CORNER OF US 41 AND WEST PARK AVE.

REV. 4-15-2019

MODEL: Default
 FILE: \\nrcs-prod\share\omaha\at\illinois\pww\DOT\Documents\DOT_Offices\Detailer_1\Projects\104119\CADD\Drawings\104119_sht-detailed.dgn

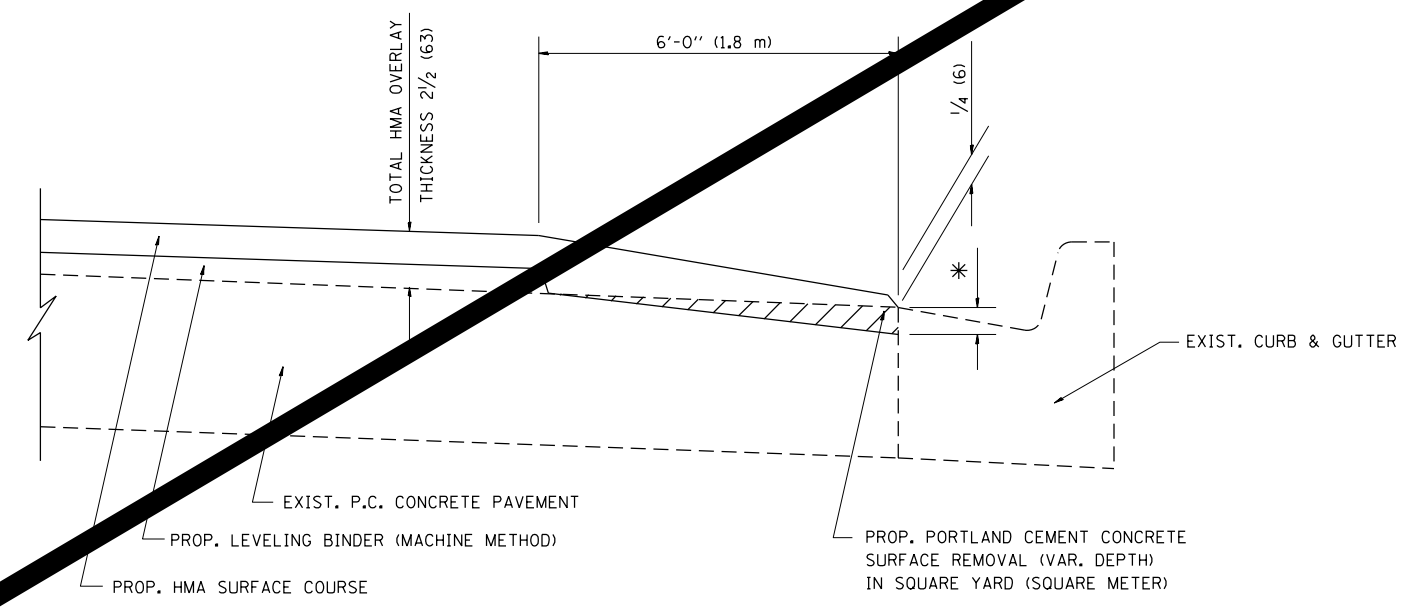
USER NAME = aquinoma	DESIGNED -	REVISED - 04/12/2019 MAA
PLOT SCALE = 10.0000 ' / in.	DRAWN -	REVISED -
PLOT DATE = 4/12/2019	CHECKED -	REVISED -
	DATE -	REVISED -

STATE OF ILLINOIS
 DEPARTMENT OF TRANSPORTATION

SIDEWALK DETAIL PLAN
US 41/SKOKIE HIGHWAY - W PARK AVE TO CHANTILLY BLVD

F.A.P. RTE.	SECTION	COUNTY	TOTAL SHEETS	SHEET NO.
346	2018-111-R5&SW	LAKE	42	15
CONTRACT NO. 62H36				
ILLINOIS FED. AID PROJECT				

SCALE: SHEET OF SHEETS STA. TO STA.



HMA TAPER AT
EDGE OF P.C.C. PAVEMENT

HMA SURFACE	THICKNESS	LEVELING BINDER THICKNESS	* MILLING AT GUTTER FLAG
C OR D	1 1/2 (38)	1/2 (13)	1/4 (33)
E	1 3/4 (44)	3/4 (19)	1/2 (38)

ALL DIMENSIONS ARE IN INCHES (MILLIMETERS) UNLESS OTHERWISE SHOWN.

1 REV. 4-15-2019

FILE NAME =	USER NAME = equinoma	DESIGNED - R. SHAH	REVISED - A. ABBAS 05-05-9
p:\1\084EBIDINTEG.illinois.gov\PIWIDOT\Documents\IDOT Offices\District 1\Projects\DI04\BRAW\Brow\Design\DISStd.dgn		CHECKED - A. ABBAS	REVISED - E. GOMEZ 12-21-00
Default	PLOT SCALE = 100.0000' / in.	DATE - 09-10-94	REVISED - R. BORO 01-01-07
	PLOT DATE = 2/5/2019		REVISED - JP CHANG 07-08-16

STATE OF ILLINOIS
DEPARTMENT OF TRANSPORTATION

HMA TAPER AT EDGE OF P.C.C. PAVEMENT			
SCALE: NONE	SHEET 1	OF 1 SHEETS	STA. TO STA.

F.A.P. RTE.	SECTION	COUNTY	TOTAL SHEETS	SHEET NO.
346	2018-111-RS&SW	LAKE	42	31
BD400-06 (BD33)		CONTRACT NO. 62H36		
ILLINOIS FED. AID PROJECT				