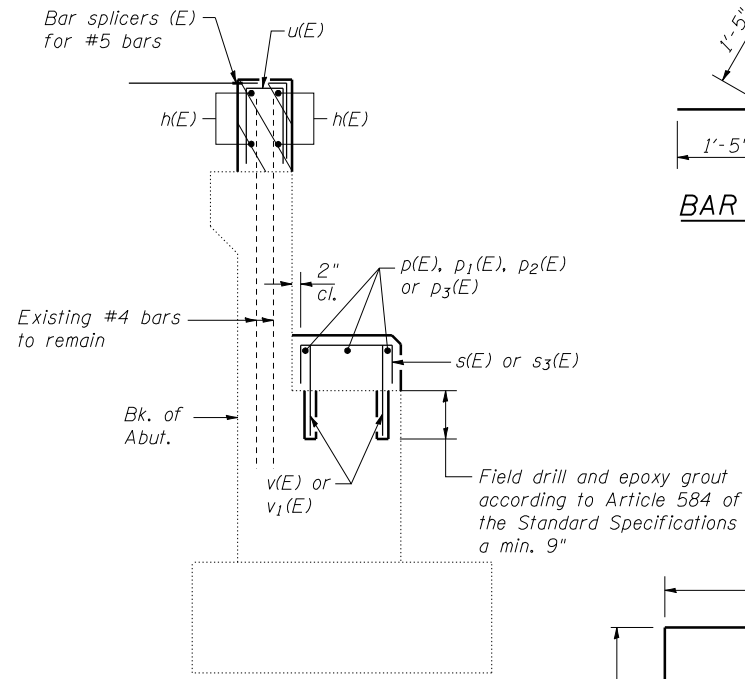
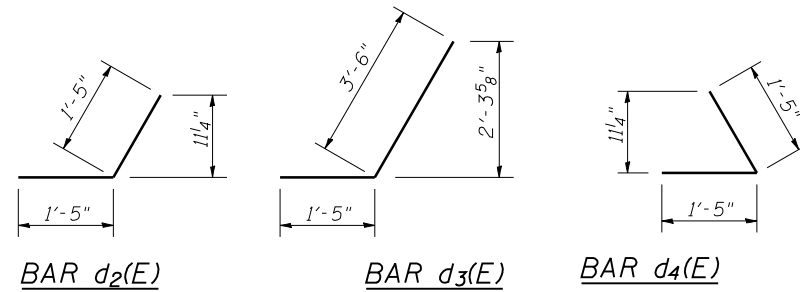


Dimensions at Rt. L

**SECTION A-A THRU ABUTMENT
SHOWING OUTLINE**



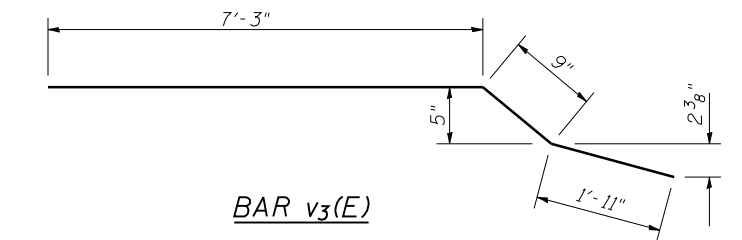
**SECTION A-A THRU ABUTMENT
SHOWING REINFORCEMENT**



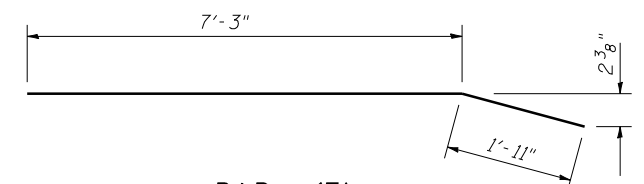
BAR d₂(E)

BAR d₃(E)

BAR d₄(E)



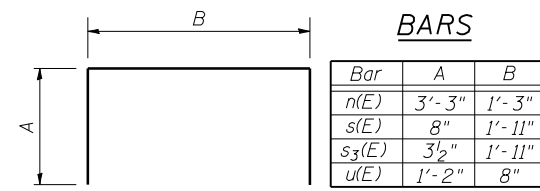
BAR v₃(E)



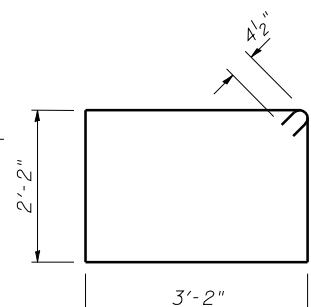
BAR v₄(E)

**BILL OF MATERIAL
TWO ABUTMENTS**

| Bar | No. | Size | Length | Shape |
|----------------------------------|-----|---------|---------|-------|
| d ₂ (E) | 16 | #5 | 2'-10" | —/— |
| d ₃ (E) | 16 | #5 | 4'-11" | —/— |
| d ₄ (E) | 16 | #5 | 2'-10" | —/— |
| d ₅ (E) | 16 | #5 | 4'-9" | —/— |
| h(E) | 8 | #6 | 48'-3" | — |
| h ₁ (E) | 24 | #5 | 12'-11" | — |
| h ₂ (E) | 24 | #5 | 13'-4" | — |
| h ₃ (E) | 24 | #5 | 16'-2" | — |
| h ₄ (E) | 24 | #5 | 13'-9" | — |
| n(E) | 28 | #5 | 7'-9" | — |
| p(E) | 3 | #5 | 12'-11" | — |
| p ₁ (E) | 3 | #5 | 38'-2" | — |
| p ₂ (E) | 3 | #5 | 12'-1" | — |
| p ₃ (E) | 3 | #5 | 39'-0" | — |
| s(E) | 52 | #5 | 3'-3" | — |
| s ₁ (E) | 3 | #5 | 3'-7" | — |
| s ₂ (E) | 32 | #4 | 11'-5" | — |
| s ₃ (E) | 53 | #5 | 2'-6" | — |
| s ₄ (E) | 3 | #5 | 3'-2" | — |
| u(E) | 98 | #5 | 3'-0" | — |
| v(E) | 107 | #5 | 1'-5" | — |
| v ₁ (E) | 109 | #5 | 1'-2" | — |
| v ₂ (E) | 62 | #5 | 9'-10" | — |
| v ₃ (E) | 46 | #5 | 9'-11" | — |
| v ₄ (E) | 12 | #5 | 9'-2" | — |
| w ₁ (E) | 20 | #5 | 7'-4" | — |
| w ₂ (E) | 20 | #5 | 7'-1" | — |
| Concrete Sealer | | Sq. Ft. | 550.6 | |
| Structure Excavation | | Cu. Yd. | 482 | |
| Concrete Structures | | Cu. Yd. | 46.4 | |
| Reinforcement Bars, Epoxy Coated | | Pound | 5500 | |
| Bar Splicers | | Each | 66 | |



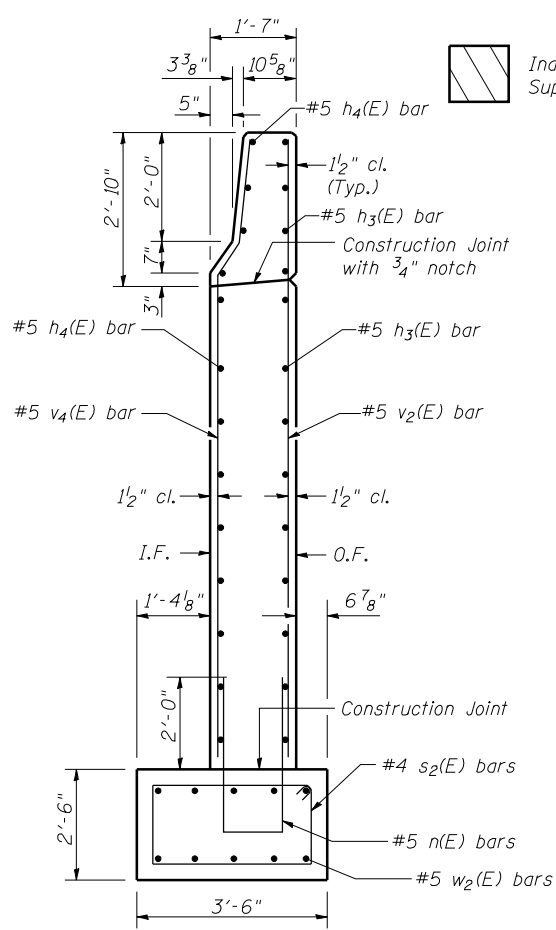
BARS s₁(E) & s₄(E)



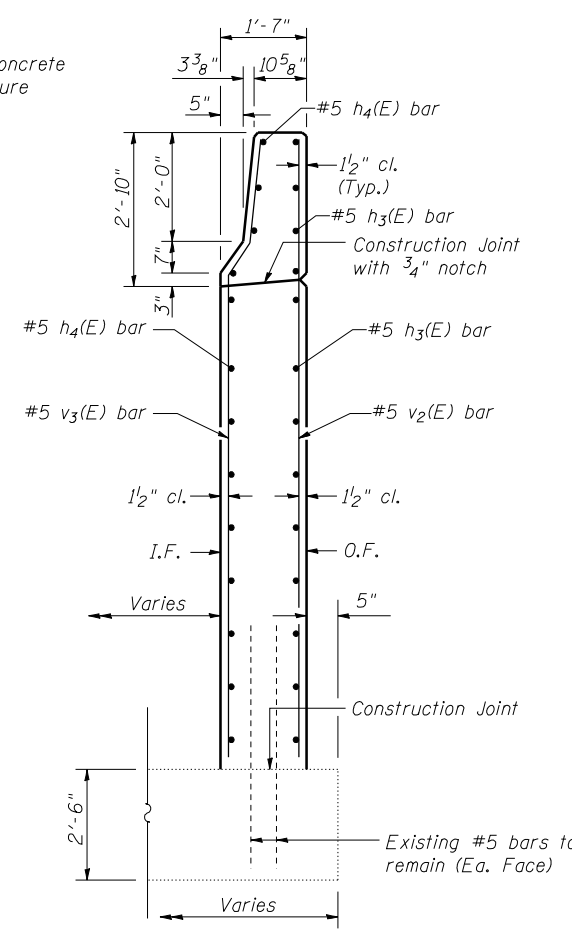
BAR s₂(E)

BARS

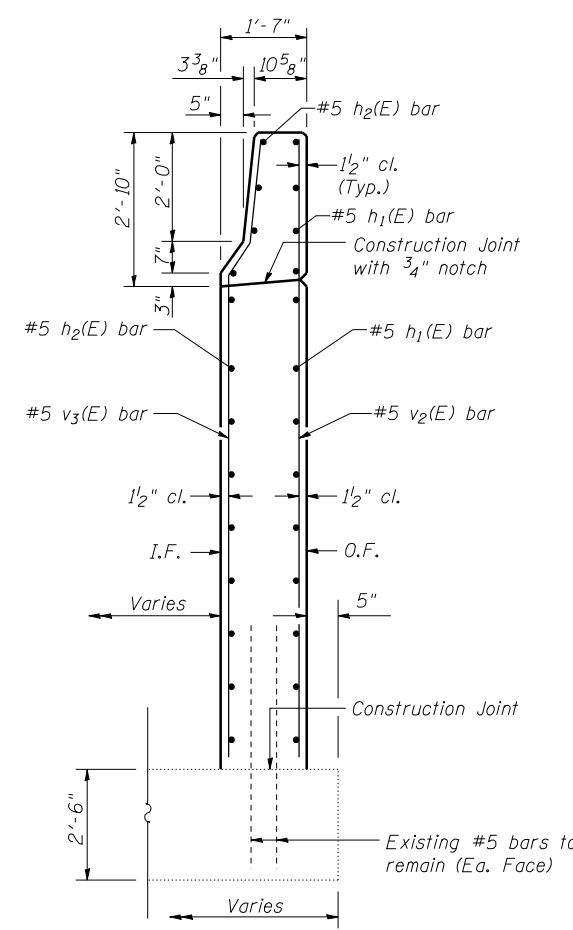
| Bar | A | B |
|--------------------|--------|--------|
| n(E) | 3'-3" | 1'-3" |
| s(E) | 8" | 1'-11" |
| s ₃ (E) | 3 1/2" | 1'-11" |
| u(E) | 1'-2" | 8" |



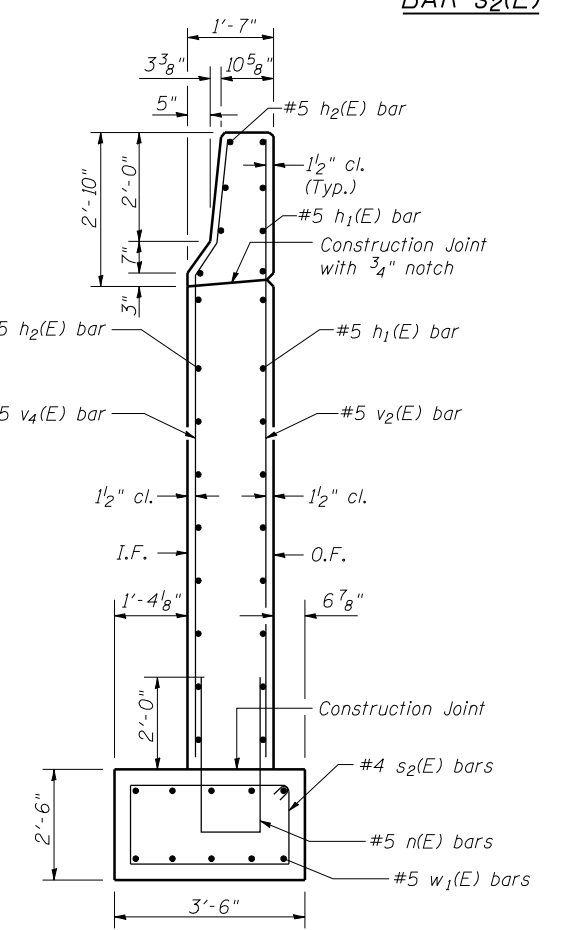
SECTION C-C



SECTION D-D



SECTION E-E



SECTION F-F

For details of Bar Splicers, see sheet 26 of 26. Order v₂(E), v₃(E) & v₄(E) bars full length and cut to fit in field. Quantity of concrete in end post included with Concrete Superstructure on sheet 9 of 26. Hatched area to be poured after superstructure falsework has been removed. Quantity of concrete included with Concrete Superstructure.