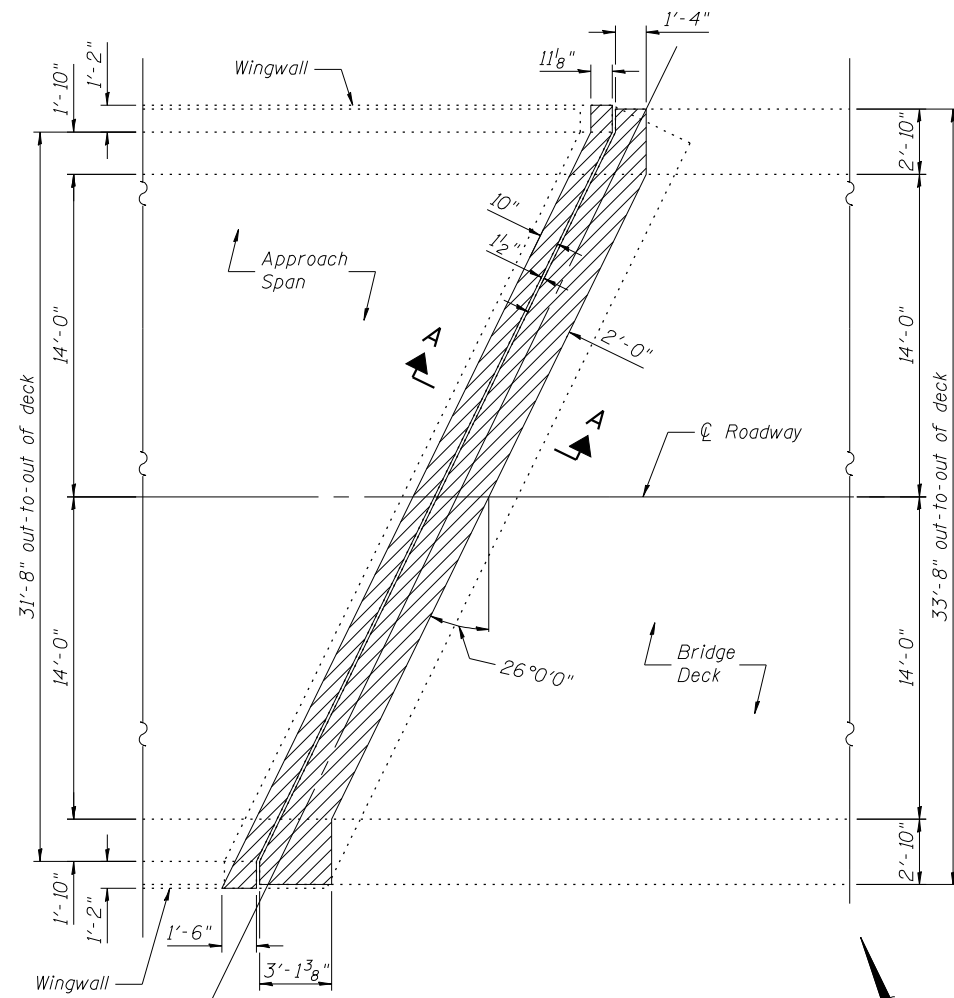
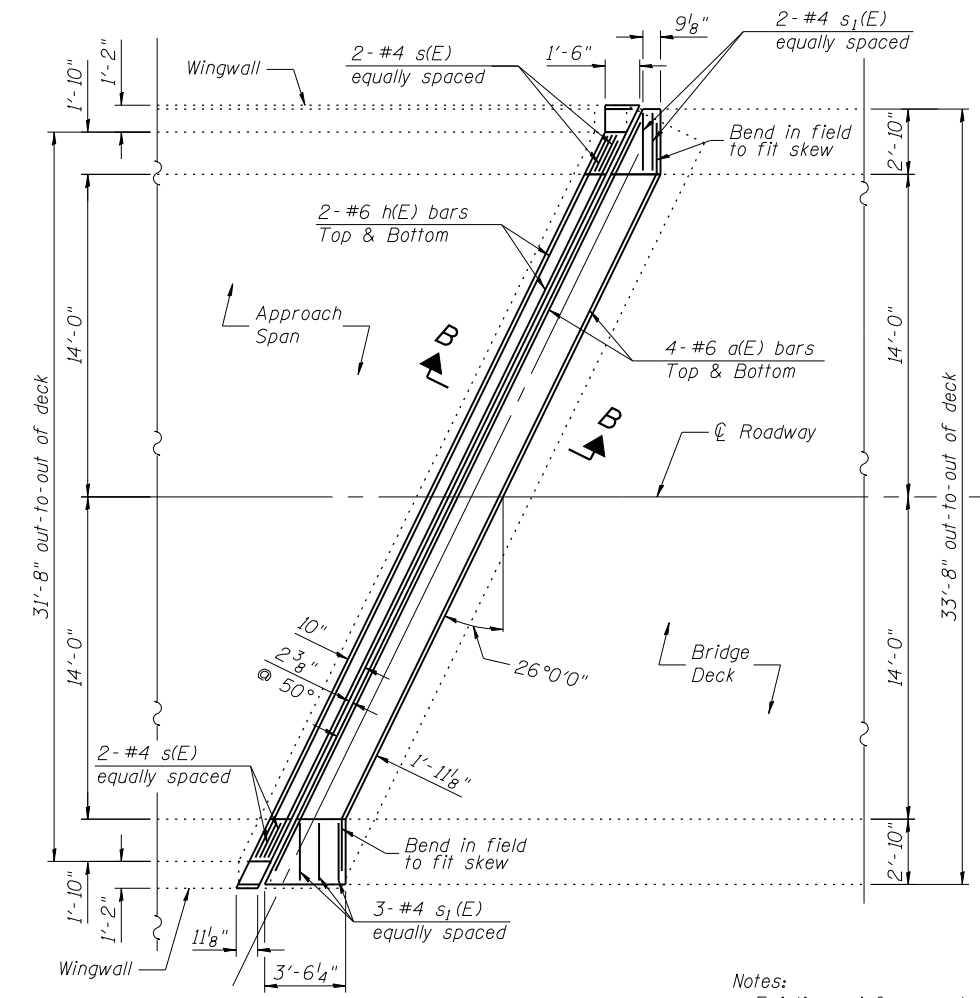


BILL OF MATERIAL

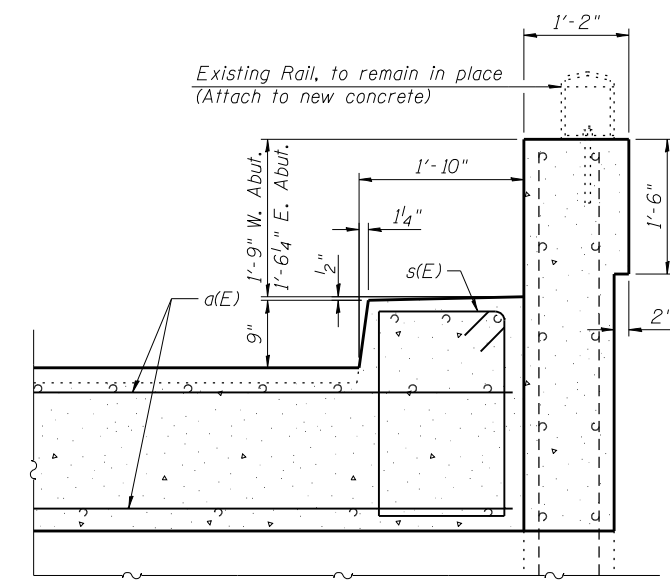
Bar	No.	Size	Length	Shape
a(E)	16	#6	34'-2"	—
h(E)	8	#6	34'-10"	—
s(E)	8	#4	7'-3"	∩
s ₁ (E)	10	#4	6'-6"	∩
Concrete Removal			Cu. Yd.	9.0
Reinforcement Bars, Epoxy Coated			Pound	1,320
Concrete Superstructure			Cu. Yd.	9.6



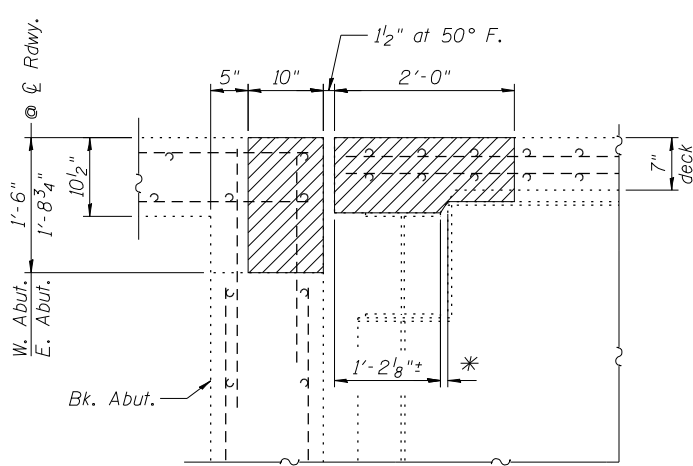
CONCRETE REMOVAL
(W. Abut shown, E. Abut similar)



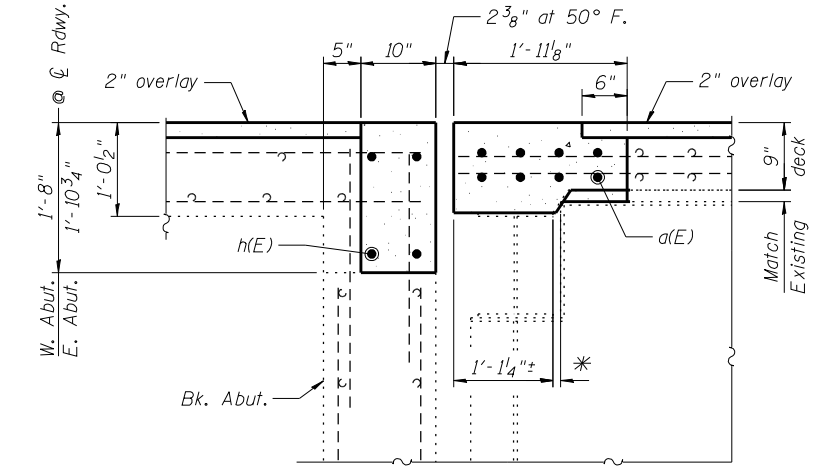
CONCRETE REPLACEMENT
(W. Abut shown, E. Abut similar)



SECTION THRU WING AT ABUTMENT



SECTION A-A
*Varies



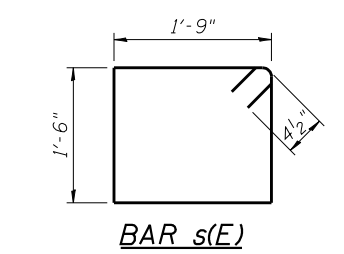
SECTION B-B
*Varies



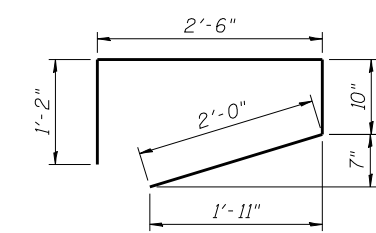
Notes:
Existing reinforcement shall be cleaned and incorporated into the new construction. Cost included with Concrete Removal.

New Steel Railing, Type 2399 not shown for clarity.

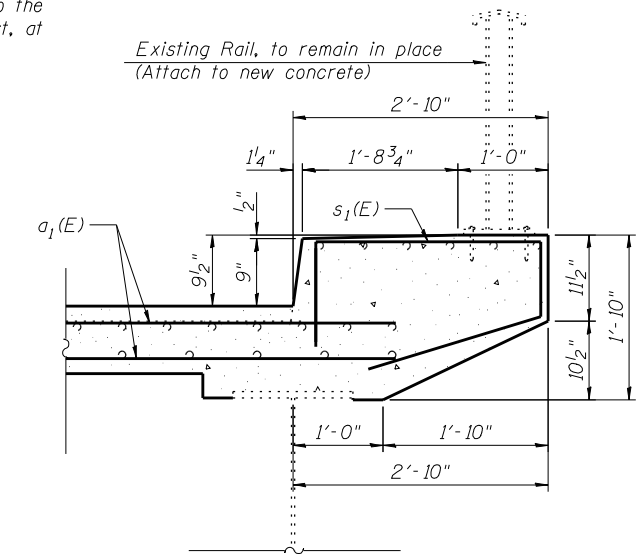
Existing rail post anchors shall be cleaned and cast into the reconstructed curb at expansion joint locations (2 rail post, at each corner). Cost included with concrete superstructure.



BAR s(E)



BAR s₁(E)



SECTION THRU CURB ON BRIDGE

PRINT DATE: 9/27/2011 12:29:31 PM z:\11015 file idot_cmts_roads\p1\shdgs\final\plotsheets\0790019-003-abutments.dgn

EFK Moen, LLC
Civil Engineering Design
331 Salem Place, Suite 225
Fairview Heights, IL 62208
Phone 618-206-4250

USER NAME = jo	DESIGNED - CTW	REVISED -
PLOT SCALE = 0:1' = 1/4" IN.	CHECKED - CDL	REVISED -
PLOT DATE = 9/27/2011	DRAWN - DP	REVISED -
	DATE - 9/27/2011	REVISED -

STATE OF ILLINOIS
DEPARTMENT OF TRANSPORTATION

JOINT DETAILS AT ABUTMENTS
STRUCTURE NO. 079-0019

SHEET NO. 3 OF 13 SHEETS

F.A.S. RTE.	SECTION	COUNTY	TOTAL SHEETS	SHEET NO.
858	12VB-11	RANDOLPH	72	36
CONTRACT NO. 76409				

ILLINOIS FED. AID PROJECT