

CORNER DETAIL
At Long Wing

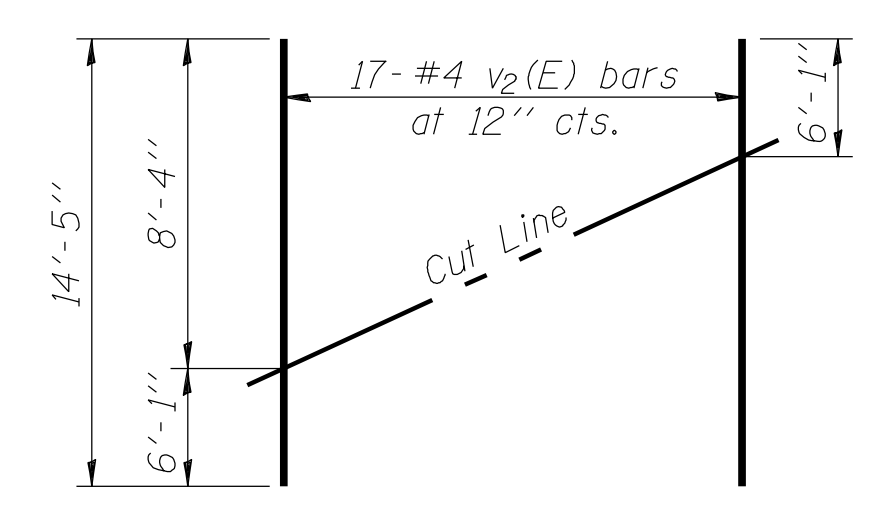
BAR LAPS
#4 - 2'-5"
#5 - 3'-0"

LONG WING

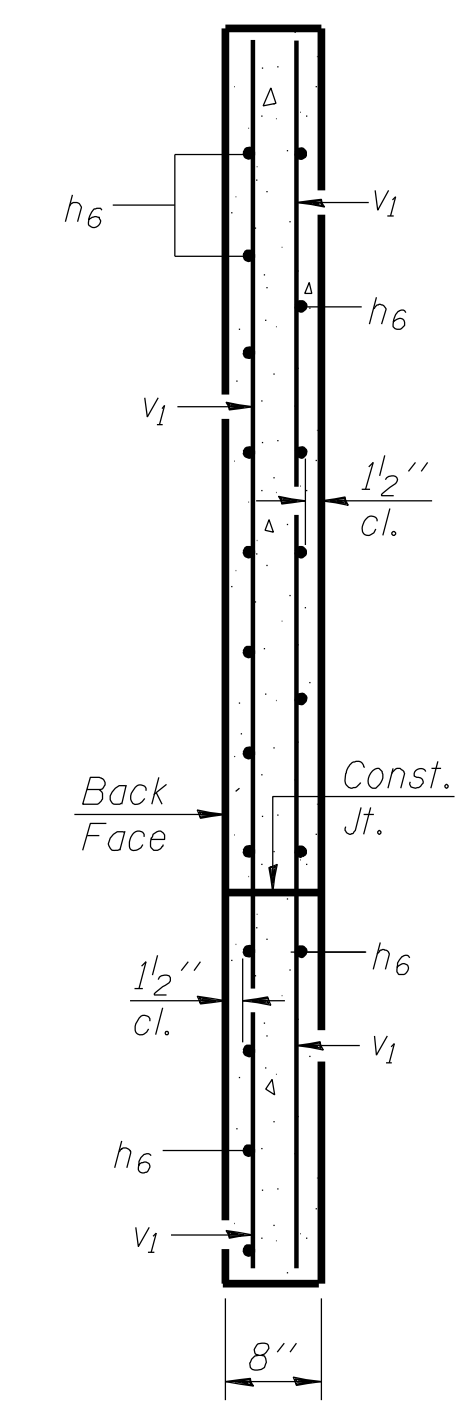
HALF LONG SECTION
Showing bars in Center Wall
Dimensions are at Right Angles to ϕ Roadway

HALF ELEVATION
Showing bars in Outside Wall
Dimensions are at Right Angles to ϕ Roadway

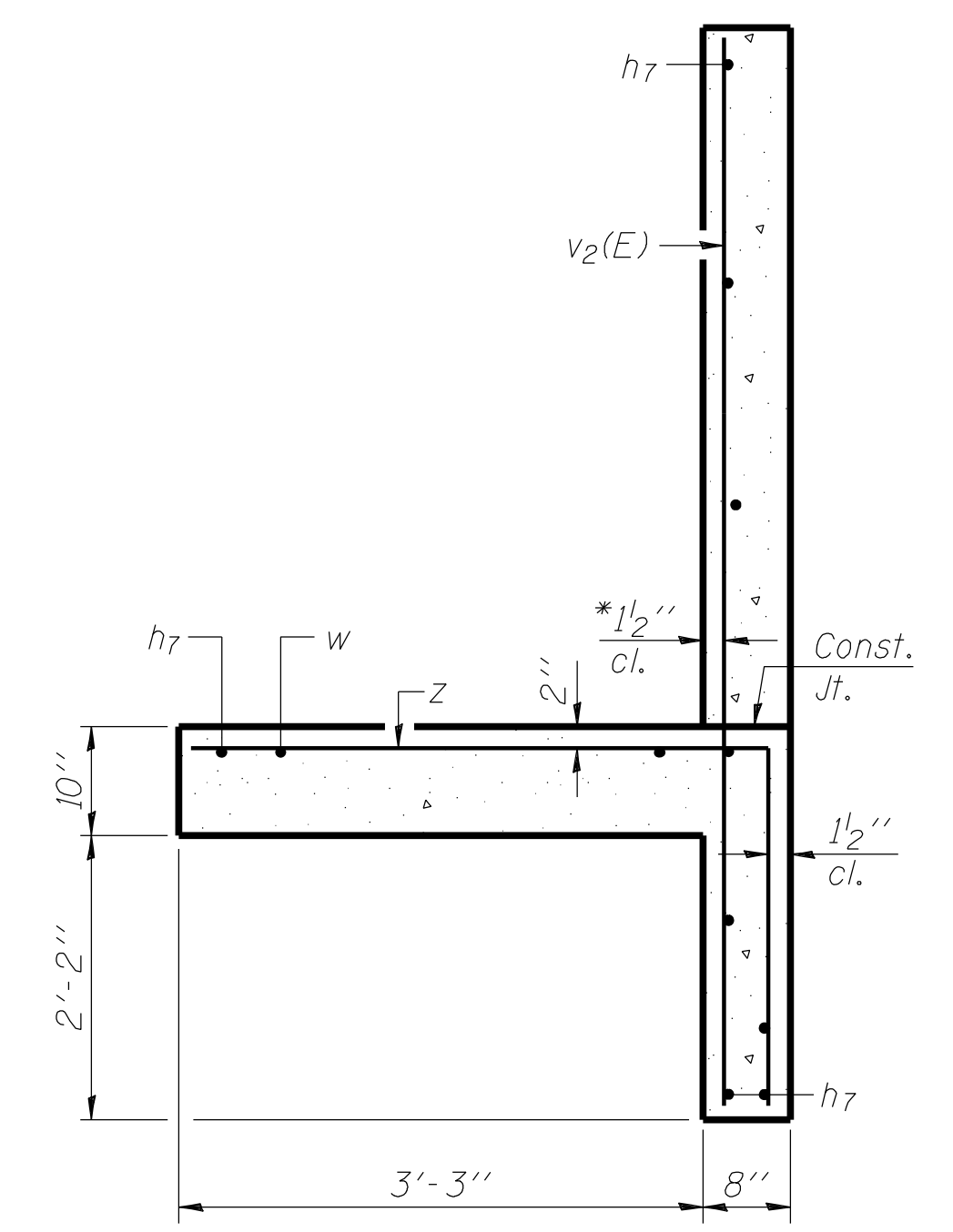
SHORT WING



FIELD CUTTING DIAGRAM
Order v2(E) full length. Cut as shown and use remainder of bars in opposite wall.



SECTION A-A



SECTION B-B
* v2(E) bars shall not be placed more than 1/2" cl. from back face of wingwalls. Max. Soil Pressure under footing = 2091 psf.

Notes:
Bars indicated thus 5x2-#5 etc. indicates 5 lines of bars with 2 lengths per line.

PRINTED DATE: 10/30/2012
FILE NAME: N:\PROJECTS\1001\PTB 148\Item 25 - 07 Various Design\Work Order 09\CADD\Drawings\Sheets\236\03_06_CulvDet.dgn



USER NAME = \$USER\$	DESIGNED - DF	REVISD -
PLOT SCALE = 0:1.0000 '1' / 1N.	CHECKED - JA	REVISD -
PLOT DATE = 10/30/2012	DRAWN - ADG	REVISD -
	CHECKED - JA	REVISD -

STATE OF ILLINOIS
DEPARTMENT OF TRANSPORTATION

CULVERT DETAILS
STRUCTURE NO. 058-2012
SHEET NO. 6 OF 8 SHEETS

F.A.U. RTE. 7464	SECTION (126BR1B)	COUNTY MACON	TOTAL SHEETS 44	SHEET NO. 35
CONTRACT NO. 74156				
ILLINOIS FED. AID PROJECT				