

STATE OF ILLINOIS
DEPARTMENT OF TRANSPORTATION
DIVISION OF HIGHWAYS

**PROPOSED
HIGHWAY PLANS**

FAS 1536 & FAU 7464 (IL 48)
SECTION (125,126,126R)RS-2&(126BR)B
PROJECT ACRS-ACM-005(911)
**BOX CULVERT REPLACEMENT AND RESURFACING (3P)
MACON AND PIATT COUNTY**

FOR INDEX OF SHEETS, SEE SHEET NO. 2

STRUCTURE OMISSION
STA. 614+89 TO STA. 617+34

RAILROAD OMISSION
STA. 804+69.9 TO STA. 804+78.6

ADT = 3000

F.A. RTE.	SECTION	COUNTY	TOTAL SHEETS	SHEET NO.
**		MACON, PIATT	44	1
		ILLINOIS	CONTRACT NO. 74156	

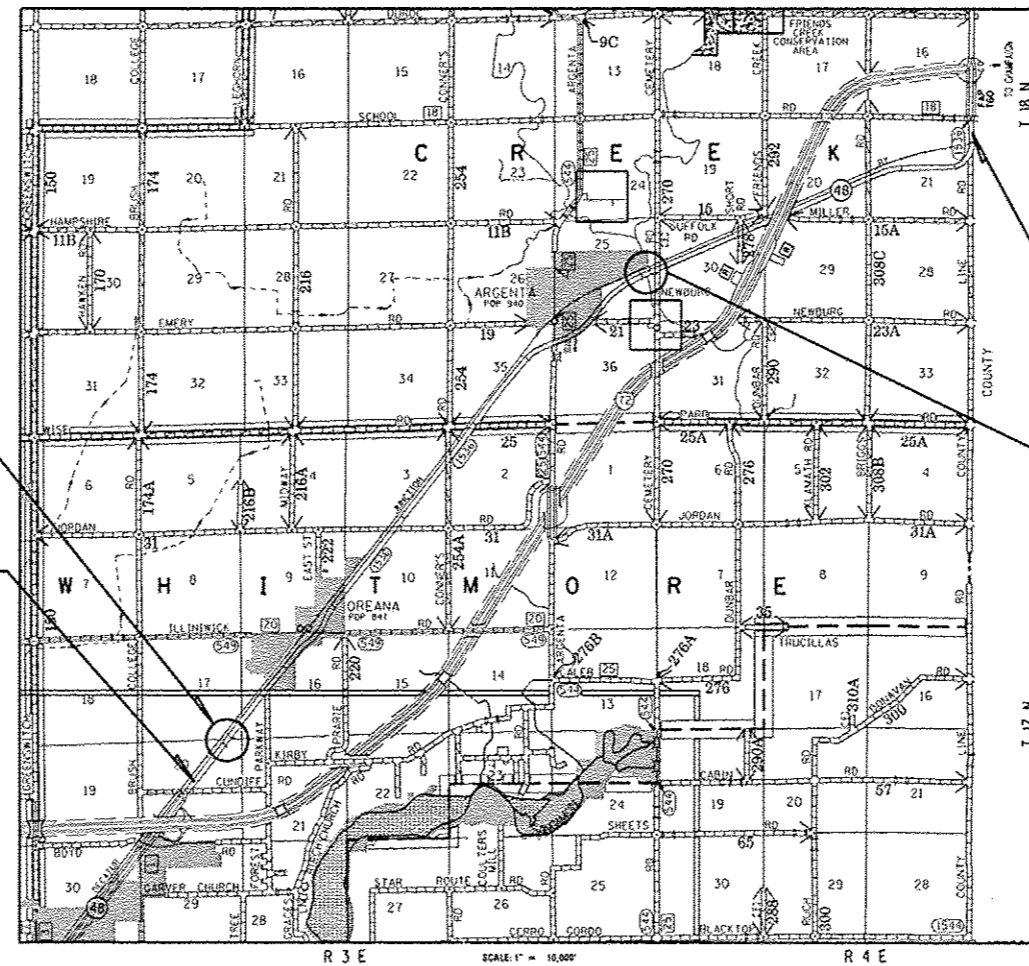
*(125,126,126R)RS-2&(126BR)B
**FAS 1536 & FAU 7464

D-97-027-06



LOCATION OF SECTION INDICATED THUS: —

C-97-058-06

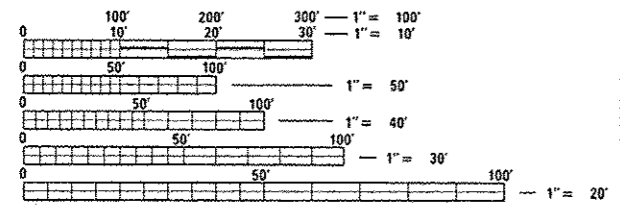


STA 290+06
SN 058-2012
DOUBLE 10'x4'x88.25'
CAST IN PLACE
CONCRETE BOX CULVERT

PROJECT ENDS
STA. 816+92

STRUCTURE OMISSION
STA 614+89 TO STA 617+34

PROJECT BEGINS
STA. 258+22



FULL SIZE PLANS HAVE BEEN PREPARED USING STANDARD ENGINEERING SCALES. REDUCED SIZED PLANS WILL NOT CONFORM TO STANDARD SCALES. IN MAKING MEASUREMENTS ON REDUCED PLANS, THE ABOVE SCALES MAY BE USED.

J.U.L.I.E.
JOINT UTILITY LOCATION INFORMATION FOR EXCAVATION
1-800-892-0123
OR 811

PROJECT ENGINEER: MARK DAUGHERTY
PROJECT MANAGER: JOYCE HEMMEN
PHONE: (217)-342-8329
CONTRACT NO. 74156

GROSS LENGTH = 55870.0 FT. = 10.581 MILE
NET LENGTH = 55587.0 FT. = 10.528 MILE

STATE OF ILLINOIS
DEPARTMENT OF TRANSPORTATION
DIVISION OF HIGHWAYS

SUBMITTED Oct 19 20 12
Roy L. DiStasio
DEPUTY DIRECTOR OF HIGHWAYS, REGION ENGINEER

March 22 20 13
John D. Baranzocchi P.E. Ia
acting ENGINEER OF DESIGN AND ENVIRONMENT

March 22 20 13
Omer Osman P.E. Ia
DIRECTOR OF HIGHWAYS, CHIEF ENGINEER

**PRINTED BY THE AUTHORITY
OF THE STATE OF ILLINOIS**