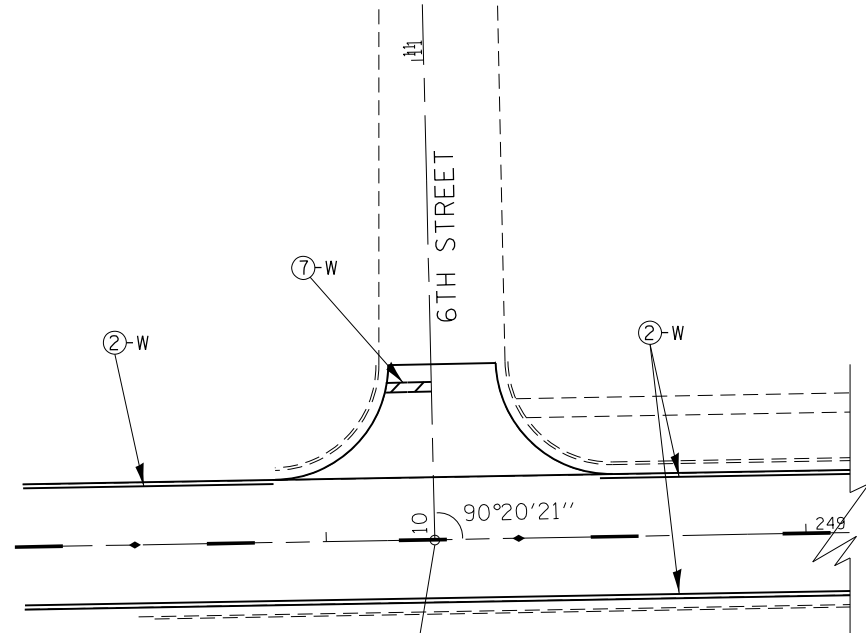
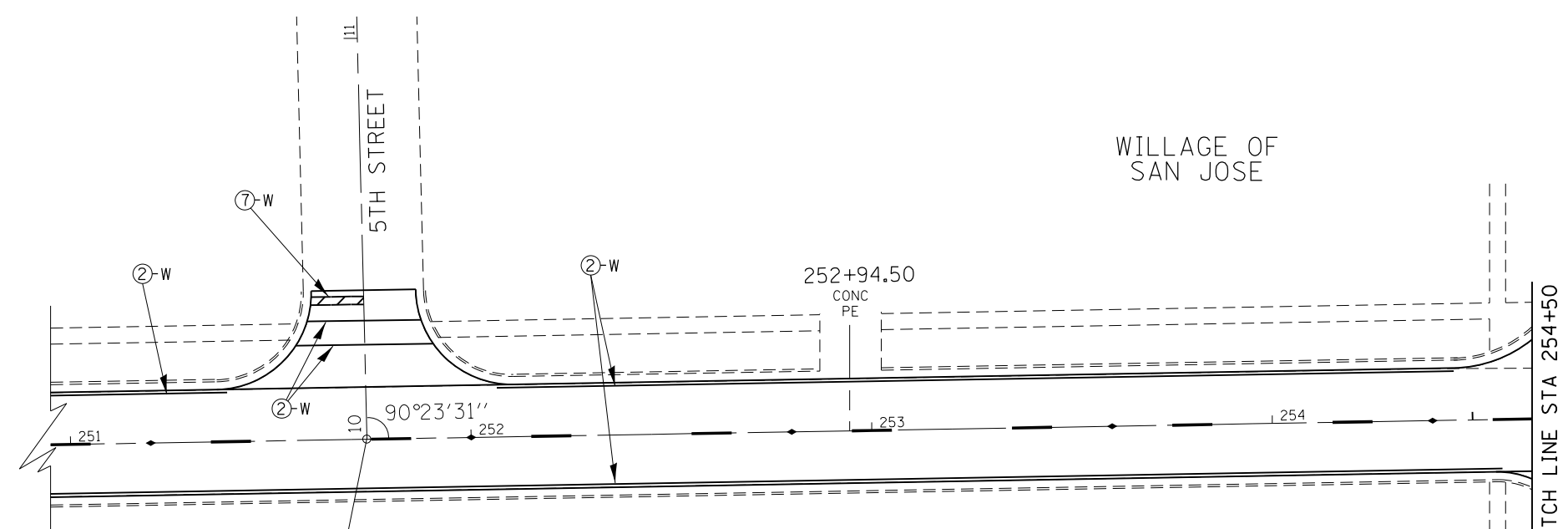


WILLAGE OF
SAN JOSE



POT 10+00.00 (6TH STREET)
POT 248+22.64 (US 136)
#70



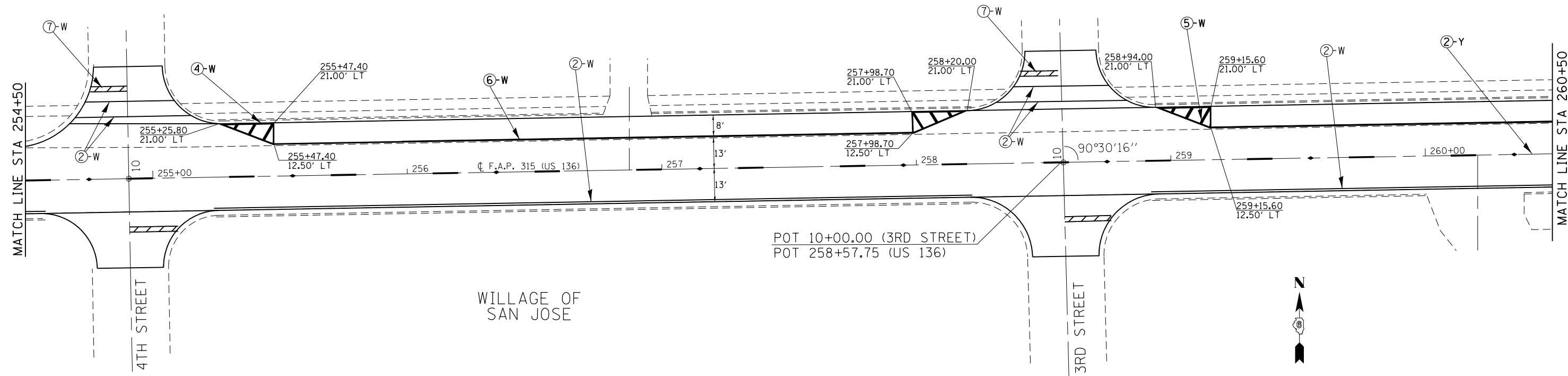
POT 10+00.00 (5TH STREET)
POT 251+74.00 (US 136)
#126

PAVEMENT MARKING LEGEND

- ① PAINT PAVEMENT MARKING - LINE 5"
- ② MODIFIED URETHANE PAVEMENT MARKING - LINE 5"
- ③ MODIFIED URETHANE PAVEMENT MARKING - LINE 5" (DOUBLE YELLOW LINES @ 13" CENTERS)
- ④ MODIFIED URETHANE PAVEMENT MARKING - LINE 8"
- ⑤ MODIFIED URETHANE PAVEMENT MARKING - LINE 12"
- ⑥ MODIFIED URETHANE PAVEMENT MARKING - LINE 6"
- ⑦ PREFORMED PLASTIC PAVEMENT MARKING, TYPE B, INLAID - LINE 24"
- ⑧ PREFORMED PLASTIC PAVEMENT MARKING, TYPE B, INLAID LETTERS & SYMBOLS

- ▷ RAISED REFLECTIVE PAVEMENT MARKER (ONE-WAY CRYSTAL)
- ◆ RAISED REFLECTIVE PAVEMENT MARKER (TWO -WAY AMBER)

ⓧ-W PAVEMENT MARKING, WHITE
ⓧ-Y PAVEMENT MARKING, YELLOW



POT 10+00.00 (3RD STREET)
POT 258+57.75 (US 136)

WILLAGE OF
SAN JOSE



FILE NAME = c:\pwwork\pwwid\sparksgw\10239760\0672E03-sht-pmk.dgn	USER NAME = sparksgw	DESIGNED - ML	REVISED - RTS	STATE OF ILLINOIS DEPARTMENT OF TRANSPORTATION	PAVEMENT MARKING DETAILS		F.A.P. RTE. = 315	SECTION	COUNTY = MASON	TOTAL SHEETS = 62	SHEET NO. = 54
	PLOT SCALE = 40.0000' / in.	CHECKED - RTS	REVISED -				CONTRACT NO. 72E03				
Default	PLOT DATE = Dec-14-2012 12:01:02PM	DATE -	REVISED -	SCALE: SHEET 6 OF 7 SHEETS STA. TO STA.		ILLINOIS FED. AID PROJECT					