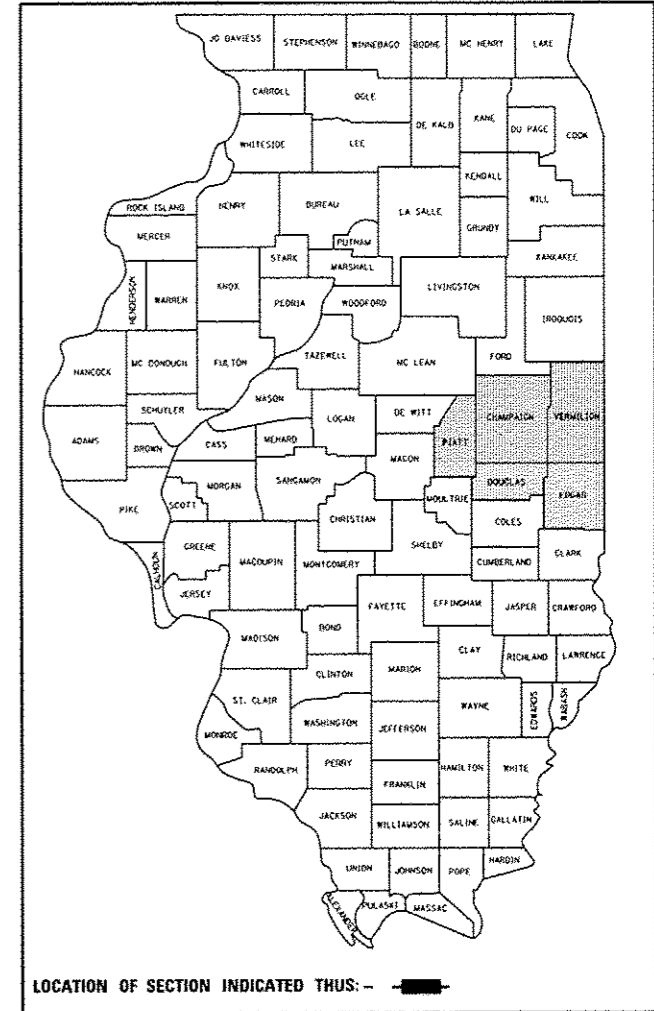


F.A. RTE.	SECTION	COUNTY	TOTAL SHEETS	SHEET NO.
VAR.	*	ILLINOIS	36	1
CONTRACT NO. 70982				

* D5 CRACK & JOINT SEAL 2013-2

D-95-028-12



FOR INDEX OF SHEETS, SEE SHEET NO. 2
FOR SUMMARY OF QUANTITIES, SEE SHEET NO. 14

STATE OF ILLINOIS
DEPARTMENT OF TRANSPORTATION
DIVISION OF HIGHWAYS

**PROPOSED
HIGHWAY PLANS**

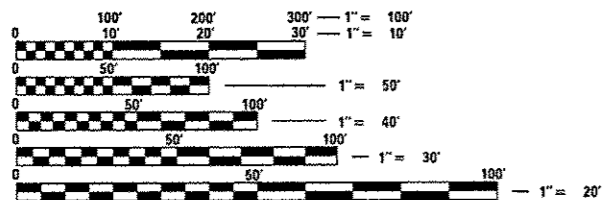
**VARIOUS ROUTES
SECTION D5 CRACK & JOINT SEAL 2013-2
ROUT & SEAL
VARIOUS COUNTIES**

C-95-028-12

SEE PAGES 3-12 FOR LOCATION MAPS, GROSS & NET LENGTHS OF PROJECT BY LOCATION

CURRENT TRAFFIC DATA

- LOCATION #1: F.A.P. RTE. 323 / (U.S. 36)
FROM IL 49 TO C.H. 11 (SHILOH RD.)
AVERAGE ADT = 1,550
- LOCATION #2: F.A.P. RTE. 836 / (IL 49)
FROM U.S. 150 AT OGDEN TO SCL OF HOMER
AVERAGE ADT = 3,200
- LOCATION #3: F.A.P. RTE. 697 / (IL 9)
FROM FORD COUNTY LINE TO ECL TO HOOPESTOON
AVERAGE ADT = 2,450
- LOCATION #4: F.A.P. RTE. 697 / (IL 9)
FROM ECL OF HOOPESTOON TO INDIANA STATE LINE
AVERAGE ADT = 1,400
- LOCATION #5: F.A.P. RTE. 711 / (IL 119)
FROM IL. 1 TO INDIANA STATE LINE
AVERAGE ADT = 1,850
- LOCATION #6: F.A.P. RTE. 323 / (U.S. 36)
FROM MOULTRIE COUNTY LINE TO U.S. 45 OVERPASS
AVERAGE ADT = 5,100
- LOCATION #7: F.A.P. RTE. 816 / (ATWOOD-ARTHUR ROAD)
FROM NCL OF ARTHUR TO U.S. 36
AVERAGE ADT = 3,850
- LOCATION #8: F.A.P. RTE. 808 / (U.S. 150 / U.S. 45)
FROM WRIGHT ST. TO EAST OF RACE ST. IN URBANA
AVERAGE ADT = 20,100
- LOCATION #9: F.A.P. RTE. 725 / (IL 10)
FROM MATTIS AVE. TO PROSPECT AVE. IN CHAMPAIGN
AVERAGE ADT = 13,700
- LOCATION #10: F.A.P. RTE. 808 / (IL 130)
FROM MADISON ST. IN PHILO TO NCL OF VILLA GROVE
AVERAGE ADT = 3,450

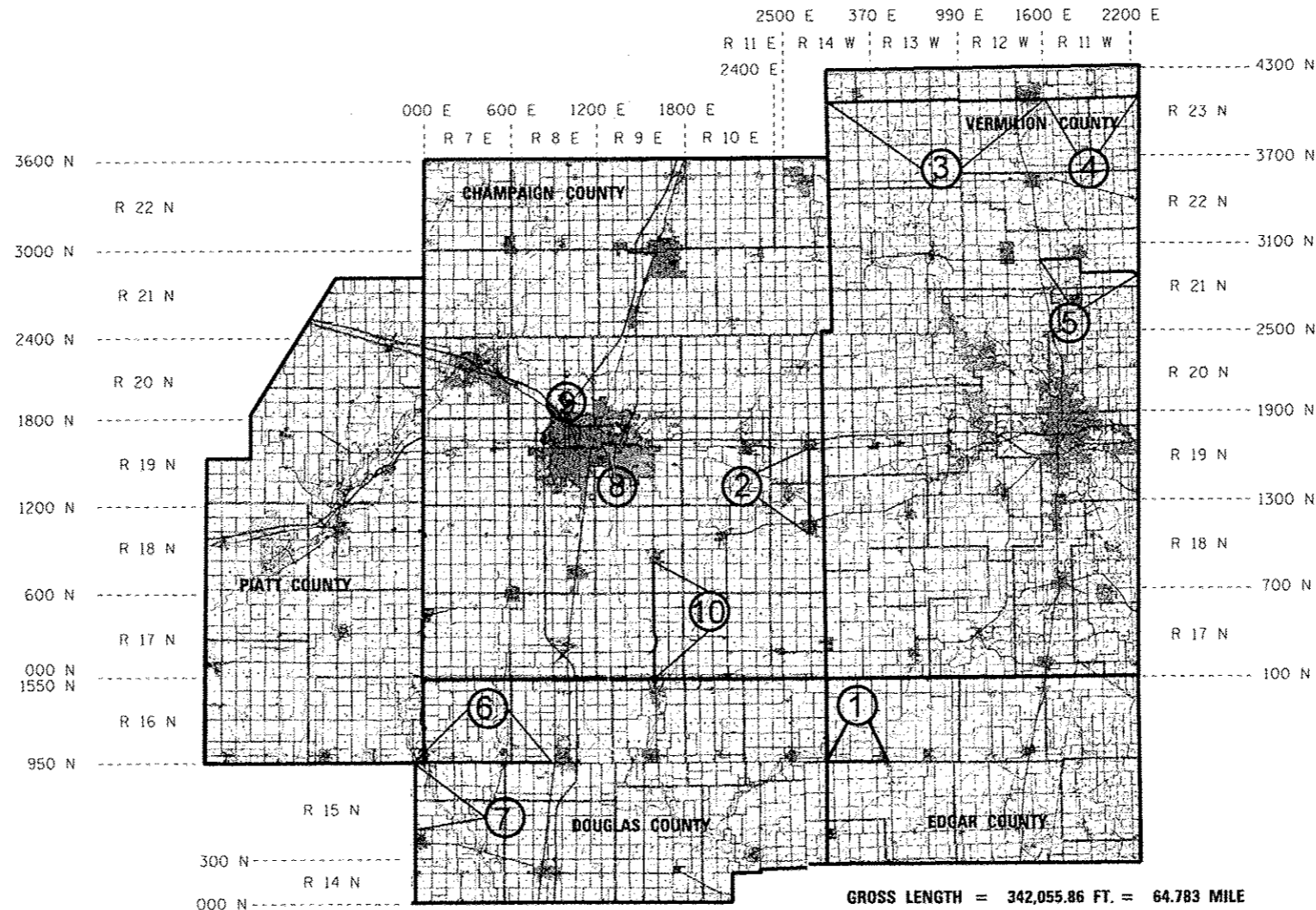


FULL SIZE PLANS HAVE BEEN PREPARED USING STANDARD ENGINEERING SCALES. REDUCED SIZED PLANS WILL NOT CONFORM TO STANDARD SCALES. IN MAKING MEASUREMENTS ON REDUCED PLANS, THE ABOVE SCALES MAY BE USED.

J.U.L.I.E.
JOINT UTILITY LOCATION INFORMATION FOR EXCAVATION
1-800-892-0123
OR 811

PROJECT ENGINEER: JASON STULTS
SQUAD LEADER: GREG EAGLIN
DESIGNER: CARL BAKER
PHONE NUMBER: (217)-465-4181

CONTRACT NO. 70982



GROSS LENGTH = 342,055.86 FT. = 64.783 MILE
NET LENGTH = 337,804.94 FT. = 63.978 MILE



STATE OF ILLINOIS
DEPARTMENT OF TRANSPORTATION
DIVISION OF HIGHWAYS

SUBMITTED 1/29 2013
Joseph E. Crowe
DEPUTY DIRECTOR OF HIGHWAYS, REGION ENGINEER

March 22 2013
John D. Baranzelli, PE, PE
ENGINEER OF DESIGN AND ENVIRONMENT

March 22 2013
Omer Osman, PE, PE
DIRECTOR OF HIGHWAYS, CHIEF ENGINEER

**PRINTED BY THE AUTHORITY
OF THE STATE OF ILLINOIS**